

PlowWings

Designed to withstand the harshest winter conditions



Wing | Junior



Wing | Patrol



Wing | Benching



municipal.monroetruck.com

 **monroe**
a brand of aebi schmidt

Wing | Junior



Model #	Weight	Moldboard Length
MJW-6	960 lbs.	6'
MJW-7	995 lbs.	7'
MJW-8	1,030 lbs.	8'
MJW-9	1,065 lbs.	9'

Standard Features:

- 27" Intake Height and 28" Discharge Height on Moldboard
- Two Double-Acting Cylinders for Direct Lift of Toe and Heel
- Direct-Lift Front Wing Slider Post, Options available for Mid-Mount Paraglide
- Wing Requires Two 4-Way Valves with 2100 PSI Relief for Heel Raise to Operate (Not included)
- Wing Provided with Under Frame Cross Tube Mounting and Hardware
- Moldboard is Shot Blasted and Powder Coat Painted Orange
- Mounting Hardware is Powder Coat Painted Black
- 10 Gauge Moldboard
- 3/8" One Piece, Tapered, Flame Cut Ribs

Options:

- Available with Monroe Para-Glide® Wing Post
- Right, Left or Dual Mount
- Mid or Rear Mount
- Cast Iron Moldboard Shoe to Extend Cutting Edge Wear
- Wrap Around Curb Guard to Prevent Moldboard Heel End Damage
- Carbide Cutting Edge for Longer Cutting Edge Life
- Two-Piece Torsion Spring Trip Cutting Edge
- Full Moldboard Trip
- Decell Heel Cylinder to Slow the Heel Lift Cylinder Function When Activating it to Stow the Wing, Thus Helping to Prevent Damage to the Chassis or Body

Reasons for Use:

- Takes up less room on truck frame, can be mounted behind the cab or to the rear of the chassis
- Folds tightly to truck for use in tight areas
- Dump box can be raised with moldboard in stow position (in most cases)
- Paraglide mid-mount post can be used in place of slider post to prevent hang-ups and moldboard toe from "digging in"
- Slider post offers 12" of lift
- Paraglide post offers 5" of lift
- Good visibility to operator from passenger side mirror



Shown with Full Trip Option



Shown with Trip Edge Option

Wing | Mid-Mount Extendable

Model #	Weight	Moldboard Length
8-MEW	1,275 lbs.	8'



Mid-Mount Extendable Wing

Standard Features:

- 24" Height x 8' Length Moldboard
- 1/2", Tapered, One-Piece, Flamecut Ribs
- 5/8" x 8" AASHO Top Punched Cutting Edge
- Wing Provided with Under Frame Cross Tube Mounting and Hardware
- Wing Requires Two 4-Way Valves & One 3-Way Valve to Operate (Not included)
- Two Double-Acting Cylinders; One Extension Cylinder and One Heel Cylinder
- One Single Acting Cylinder for Toe
- Moldboard is Shot Blasted and Powder Coat Painted Orange
- Mounting Hardware is Powder Coat Painted Black
- Non-Trip Moldboard
- 10 Gauge Continuously Welded Moldboard

Options:

- Cast Iron Moldboard Shoe
- Wrap Around Curb Guard
- Tapered Moldboard for Additional Snow Load Capacity
- Carbide Cutting Edge
- Special Paint/Colors



Reasons for Use:

- Simple light duty design for widening the plowing swath
- Offers very light duty benching capabilities
- Small footprint on truck frame allows installation in areas other wings won't fit
- Extended hydraulically perpendicular to the truck frame with additional cylinders to operate the toe and heel
- Easily visible to the operator from the passenger side mirror
- Wing tucks up tightly to the dump body for easy maneuverability and storage

Wing | Patrol



The perfect complement to your front plow or mid-mount underbody scraper, Monroe's Patrol Wing with advanced technology Paraglide trailing link post will increase your productivity by combining two plowing operations (front and widening) into a one-pass, one-operator trouble-free task. In addition, the Paraglide post reduces the risk of the moldboard toe digging into the ground to help prevent catastrophic damage when the moldboard slams into the passenger side cab door as can happen with conventional slider posts.

Standard Features:

- 100% Welded Moldboard
- 1-Piece 1/2" Interlaced Moldboard Reinforcement Ribs
- Free Float to Follow Contour of Road to Shoulder
- Rear Push Mount Installed Above Frame for Increased Ground to Rear Mount Clearance (Other Mounts also available)
- 100% Powder Coat Finish

Options:

- Two-Piece Torsion Trip Edge
- Left Side or Dual Mount
- Moldboard Wear Shoe to Extend Cutting Edge Wear
- Power and Manual Tilt Front Hitches
- Full Trip Moldboard
- Carbide Cutting Edge for Longer Cutting Edge Life
- Special Paint
- Dual Pusharms
- Power Heel Slide for On-the-Go Swath Widening from the Cab
- Curb Guard to Prevent Moldboard Heel End Damage
- Decell Cylinder to Slow the Heel Lift Cylinder Function when Activating it to Stow the Wing, Thus Helping to Prevent Damage to the Chassis or Body
- Marker Kit

Model #	Weight	Moldboard Length
8SFWMB	1,400 lbs.	8'
8DFWMB	1,425 lbs.	8'
9SFWMB	1,450 lbs.	9'
9DFWMB	1,475 lbs.	9'
10SFWMB	1,500 lbs.	10'
10DFWMB	1,525 lbs.	10'
11SFWMB	1,545 lbs.	11'
11DFWMB	1,675 lbs.	11'
12SFWMB	1,600 lbs.	12'

Model #	Weight	Moldboard Length
8DFWMB	1,425 lbs.	8'
9DFWMB	1,475 lbs.	9'
10DFWMB	1,525 lbs.	10'
11DFWMB	1,675 lbs.	11'



Unique Interlaced Rib Design



NEW! Adjustable Float Link Design

Specifications	DFPW-8	DFPW-9	DFPW-10	DFPW-11	DFPW-12
Overall Moldboard Length	104"	116"	128"	140"	152"
Cutting Edge Length	8'	9'	10'	11'	12'
Height of Moldboard at Nose	29"	29"	29"	29"	29"
Height of Moldboard at Heel	39"	39"	39"	39"	39"
Moldboard Thickness	3/16"	3/16"	3/16"	3/16"	3/16"
Weight of Complete Wing Assembly	1,620 lbs.	1,690 lbs.	1,870 lbs.	1,985 lbs.	2,050 lbs.
Weight of Moldboard	700 lbs.	770 lbs.	840 lbs.	720 lbs.	785 lbs.
Clearing Width with 90° Pusharm Angle	58"	65"	72"	79"	87"

Para-Glide **WING POST**

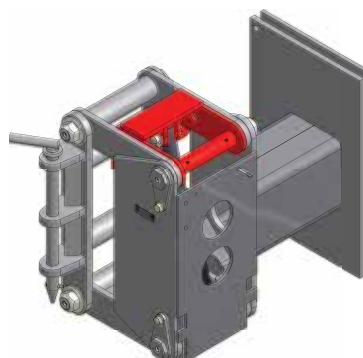
U.S. Patent No. 8,596,376



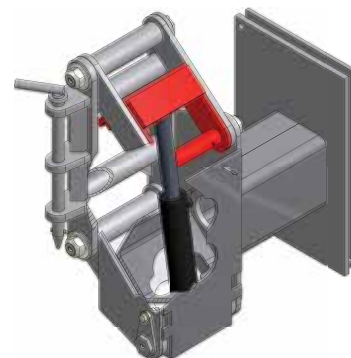
U.S. Patent No. 8,596,376

Standard Features:

- Full Floatation Reduces Road Shock and Vibration to the Vehicle
- Longer Service Life and Fewer Repairs with Increased Safety
- Faster Cycle Times
- Trailing Link Design Reduces the Risk of the Moldboard Toe End Digging into the Ground and Kicking Up into the Truck Cab
- 14" Full Float with 18" of Lift
- Front, Mid or Rear Mounts Available
- Primary Pivot Pins are Center Line Drilled from Each End and Have a Cross Hole for Greasing



Para-Glide® Wing Post in Resting Position.



Para-Glide® Wing Post in Full Float Position.

Wing | Heavy Duty Benching



Model #	Weight	Moldboard Length
9HDBW	3,350 lbs.	9'
10HDBW	3,420 lbs.	10'
11HDBW	3,460 lbs.	11'
12HDBW	3,520 lbs.	12'

Standard Features:

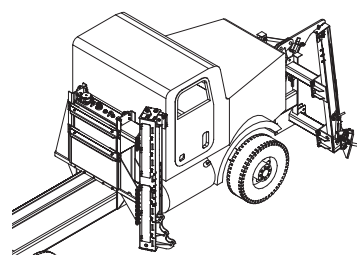
- 3/16" Formed Moldboards
- 4" x 4" x 3/4" Moldboard Bottom Angle
- 1/2" Moldboard Ribs
- Structural I-Beam, Direct-Lift Front Post with 3 1/2" x 62" Lift Cylinder
- Single Telescoping, Three-Position Adjustable, Spring Cushioned Pusharms with Shear Pins
- 100% Powder Coated Orange

Options:

- Rubber Snow Deflector
- Custom Side Plates
- Cast iron Moldboard Shoe
- Wrap-Around Curb Guard to Prevent Moldboard Heel End Damage
- Cable Lift Front Post
- Carbide Cutting Edge for Longer Cutting Edge Life
- Rear Valve Cabinet & 40 Gallon Reservoir
- Left Side Mount
- Full Trip or Torsion Trip Moldboard
- Straight Moldboard
- Optional Front & Rear Posts
- 40" Benching Height

Reasons for Use:

- Provides powerful widening and benching capabilities
- High-Lift front post allows operator to push back existing snow windrows into a "bench," getting snow out of the way of the road surface.
- The answer for deep piled or drifting snow where brush, trees, ditches, and high banks prevent typical widening operations with a standard patrol wing.



Rear Valve Cabinet & 40 Gallon Reservoir



LaCrosse
Dual Front Mount Wings



South Dakota D.O.T.
Dual Mid-Mount Wings



LaCrosse
LH Wing, Front View



Town of Dairyland
Piggyback Style Hydraulic Kit

Town of East Troy
Heavy Duty Benching Wing



Iowa County
Straight Front Mount Paraglide Wing

4 Locations to Serve You

Monroe, WI

Marshfield, WI

De Pere, WI

Joliet, IL



municipal.monroetruck.com
800-880-0109

 **monroe**
a brand of aebe schmidt