



# Accu-Place Spinners

## Service and Parts Manual



**MONROE TRUCK EQUIPMENT**  
1051 W. 7th Street  
Monroe, WI 53566  
Phone: 608-328-8127  
Fax: 608-329-8488

05052191-7  
4/28/2014

# TABLE OF CONTENTS

<b>SAFETY INSTRUCTIONS</b>	<b>Page 2</b>
<b>MAINTENANCE INSTRUCTIONS</b>	<b>Page 3</b>
<b>TORQUE CHART</b>	<b>Page 3</b>
<b>INSTALLATION INSTRUCTIONS</b>	<b>Page 4-5</b>
<b>GENERAL INFORMATION</b>	<b>Page 6</b>
<b>REPLACEMENT PARTS</b>	<b>Page 8-30</b>
<b>HOW TO ORDER PARTS</b>	<b>Page 31</b>
<b>RETURN POLICY</b>	<b>Page 31</b>
<b>WARRANTY INFORMATION</b>	<b>Page 32-33</b>

## SAFETY INSTRUCTIONS

- Read all installation, safety and maintenance instructions completely before operating this equipment
- Keep all personnel clear of moving parts while equipment is being operated.
- Do not operate equipment in need of maintenance! Repair immediately!
- While operating this equipment, use common sense, use caution, be alert and be safety-conscious.



The diagram shows a hand being struck by a hydraulic cylinder rod. The hand is shown in profile, with the fingers and palm facing the viewer. A dashed line indicates the path of the rod as it strikes the back of the hand. Arrows point to the impact area and the direction of the rod's movement.

**! DANGER**

**AVOID HIGH-PRESSURE FLUIDS**

Escaping fluid under pressure can penetrate the skin causing serious injury.

Avoid the hazard by relieving pressure before disconnecting hydraulic or other lines. Tighten all connections before applying pressure.

Search for leaks with a piece of cardboard. Protect hands and body from high pressure fluids.

If an accident occurs, see a doctor immediately. Any fluid injected into the skin must be surgically removed within a few hours or gangrene may result.

# MAINTENANCE INSTRUCTIONS




## In Season:

- Check for loose bolts and nuts daily, and re-torque before use. (Failure to inspect equipment on a daily basis may seriously affect safety and/or efficiency.)
- Lubricate all grease fittings every ten hours of normal use and more frequently under heavy use.
- A cross over relief valve (1800 PSI) MUST be plumbed into the reversing circuit.
- Check all hydraulic fittings for tightness on a regular basis.
- System pressure should NOT exceed 2000 PSI.
- Due to the nature of use and environment this equipment is operating in, damage and wear may occur at anytime. Therefore, **Monroe Truck Equipment** recommends the end user establish and follow a daily inspection routine before using this equipment.

## Off Season:

- Use care when disconnecting hydraulic lines to assure that no dirt or foreign objects enter the hydraulic system. Use caps to cover hydraulic hose fittings and insert plugs in hydraulic ports.
- Hydraulic cylinders should be fully retracted when stored during the off season to prevent damage or corrosion. The remaining exposed shaft surface should be coated with a thick grease to prevent corrosion, which must be removed before returning to regular service.
- Check mounting bolts for wear and/or damaged threads and replace before next season.

# TORQUE CHART

SIZE	 GRADE 2	 GRADE 5	 GRADE 8
1/4-20	50 IN-LBS	75 IN-LBS	9 FT-LBS
3/8-16	15 FT-LBS	23 FT-LBS	35 FT-LBS
1/2-13	35 FT-LBS	55 FT-LBS	80 FT-LBS
5/8-11	75 FT-LBS	110 FT-LBS	170 FT-LBS
3/4-10	130 FT-LBS	200 FT-LBS	280 FT-LBS
1-8	190 FT-LBS	480 FT-LBS	680 FT-LBS
1 1/4-7	380 FT-LBS	840 FT-LBS	1,360 FT-LBS

# INSTALLATION INSTRUCTIONS

1. Installed unit should have 6"-8" ground clearance with truck fully loaded, allow enough clearance for spring deflection. Check with customer for expected field service height.
2. Mount brackets 00081055 item 5 and 00081056 item 6 to frame of truck using a minimum of four ½" grade 8 bolts (not supplied) per bracket . Note the brackets may have to be modified to fit around spring mounts, etc.
3. Weld part 00081061 item 7 (qty2) to the installed brackets ½" from bottom of plate. See drawing 00084164. Optional install if truck is equipped with a pintle plate, weld 00081061 to the pintle plate. Make sure brackets are the same distance from the ground or unit will not be level.
4. Install 00081063 item 3 and 00084108 item 4 using ½" stainless steel bolts supplied. These brackets have a series of holes in them to allow for height and depth adjustment of the spinner.
5. Install cross bar 00081071 using supplied U-bolts 05017002. The u-bolts will allow for width adjustment.
6. Attach preassembled spinner unit item 1 to the cross bar item 2 using pins 1" diameter 05022076 and ½" diameter 05022153.
7. With the spinner unit now installed on the truck use a piece of string to check alignment of the discharge from spreader to the spinner hopper. Keep in mind augered material will have some trajectory. Adjust if required. Now remove ½" diameter pin 05022153 to allow unit to pivot to the bulk unload position and check for clearance. Also raise dump body with the spinner in both positions checking clearance. Note in some cases a hydraulic pull off valve may have to be installed to limit dump body angle.
8. Remove spinner side plate and check paddle to housing clearance. Recommended ¼" to ⅜" for best performance. CAUTION: When field servicing make sure truck and hydraulics are turned off. Then disconnect all hydraulic hoses to unit.
9. Install all required hydraulic valves and hoses. (See additional instructions for installation of Monroe Truck Equipment supplied hydraulic valve.) On units with ground speed control, install hydraulic flow meter in the pressure line to the spinner motor. Preferred mounting location for the flow meter would be inside the hydraulic valve enclosure. For proper installation note direction of flow indicated on flow meter.
10. Route hydraulic hoses away from exhaust components and drive shaft. Make sure hoses do not have any pinch points or catching when spinner is rotated left to right. Use protective hose wrap where needed.
11. Install controls in the cab of truck and route all electrical harnesses, using dielectric grease at all connections. Make sure all circuits are fuse protected for rated amperage draw. Route electrical harnesses away from exhaust components and drive shaft having no pinch points or catching when spinner is rotated left to right. Use protective wrap where needed.
12. The initial Accu-place installation is now complete.

## Check list:

- 1 Spinner impeller rotation
- 2 Rotation of spinner unit left to right
- 3 Raise and lower of unit
- 4 If unit is equipped with feedback cylinder check orientation

# INSTALLATION INSTRUCTIONS

## Hydraulic Valve Installation Instructions

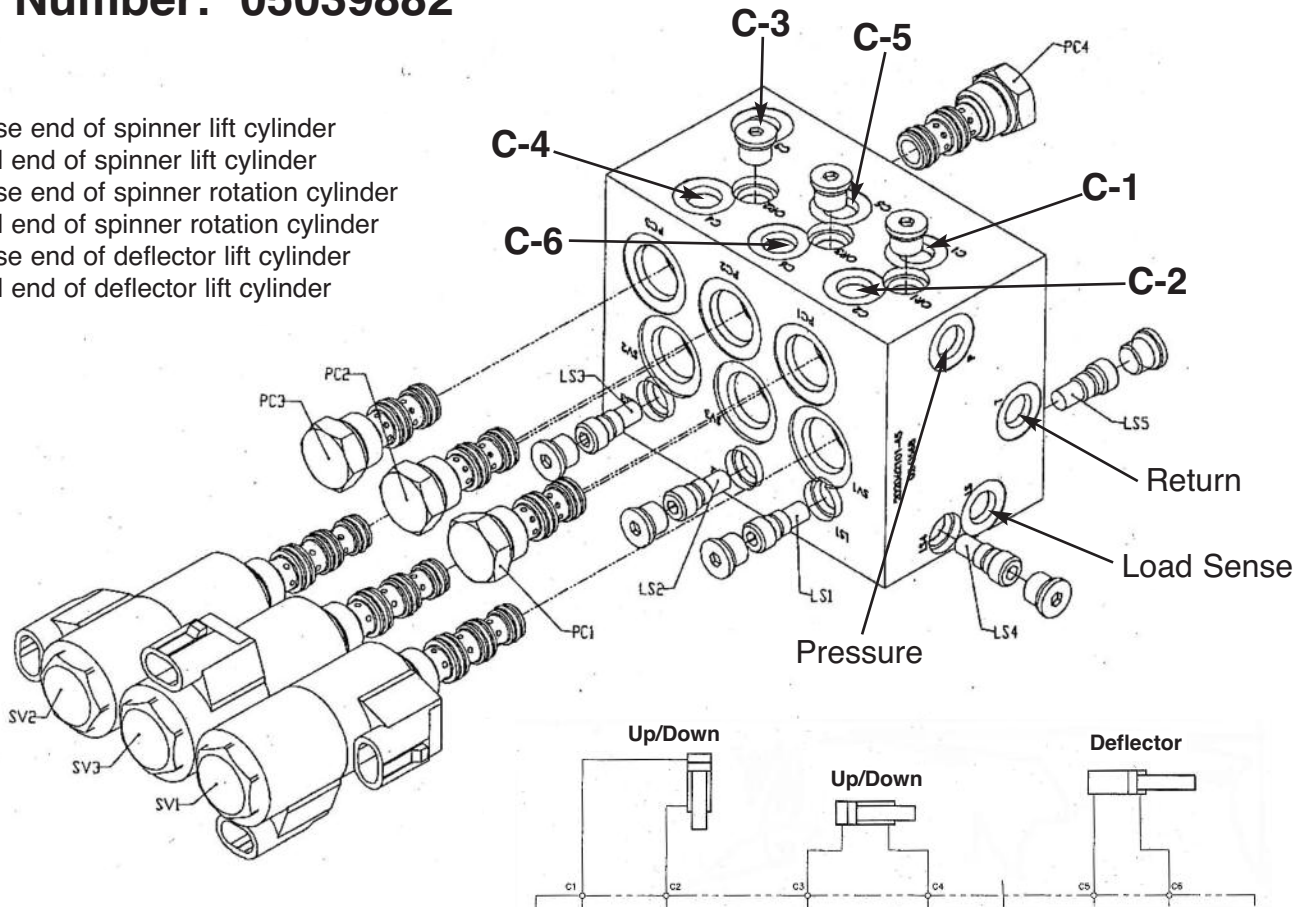
Part number: 05038618 two functions or 05039882 three functions

*Note: All ports on these valves are 7/16" ORB*

1. Install a tee in the pressure line at the truck valve bank with a 1/2" port to supply pressure to the accu-place valve. Run a 3/4" diameter hose from the tee to the "P" port on the valve.
2. Install a shuttle tee in the load sense line. Run a 3/8" diameter line from the tee to the "LS" port on the valve.
3. Run a 1/2" diameter return hose from the "T" port on the valve to the hydraulic reservoir.  
Note: 1/4" hose can be used on ports "C1-C6"
4. Install a hose from port "C1" to the base end of the spinner lift cylinder.
5. Install a hose from port "C2" to the rod end of the spinner lift cylinder.
6. Install a hose from port "C3" to the base end of the spinner left-right cylinder.
7. Install a hose from port "C4" to the rod end of the spinner left-right cylinder.
8. If your unit is equipped with the optional deflector install a hose from port "C5" to the base end of the deflector cylinder. Also from port "C6" to the rod end of the deflector cylinder.
9. Secure all hoses making sure there are no pinch points. Use hose wrap when needed.
10. Connect all electrical harnesses to the proper valve coils.

## Part Number: 05039882

- C-1 base end of spinner lift cylinder
- C-2 rod end of spinner lift cylinder
- C-3 base end of spinner rotation cylinder
- C-4 rod end of spinner rotation cylinder
- C-5 base end of deflector lift cylinder
- C-6 rod end of deflector lift cylinder



# OPERATING INSTRUCTIONS

## Accu-place Closed Loop Spinner Control Console:

The Closed loop spinner control console controls the position of the Accu-place spinner by directing oil flow through a hydraulic valve manifold to the hydraulic cylinders of the Accu-place spinner assembly. This console allows the operator to raise and/or lower the spinner, turn the spinner left and/or right and activate a deflector to dispense a wider spread pattern, all from the inside of the cab of the truck. Note: This console **does not** control the speed of the spinner impeller or the discharge rate of the granular material.

## Caution:

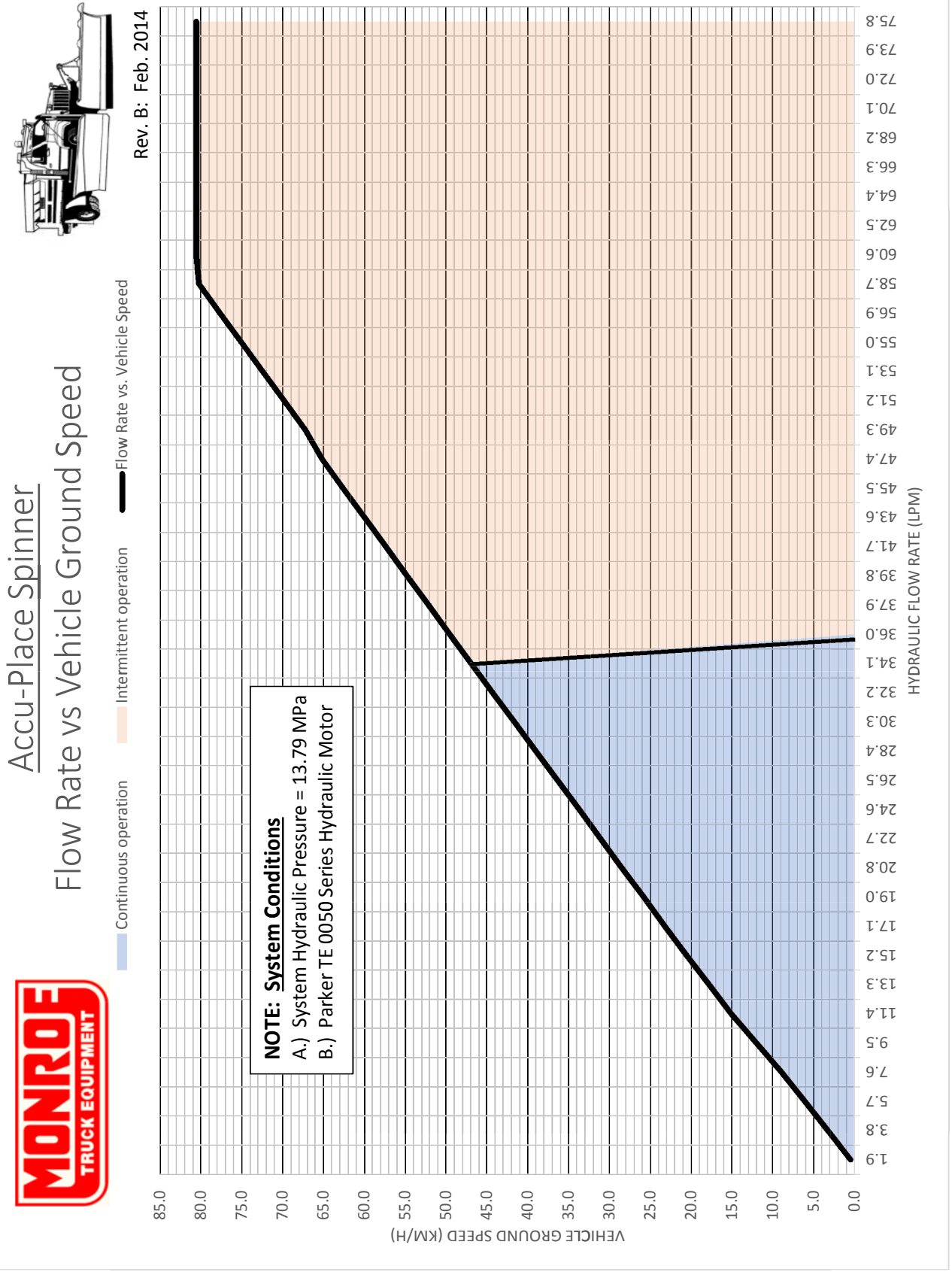
When operating any equipment, be sure everyone is standing clear. Be alert and watch for anything that may require turning the system off.

## Basic Operation:

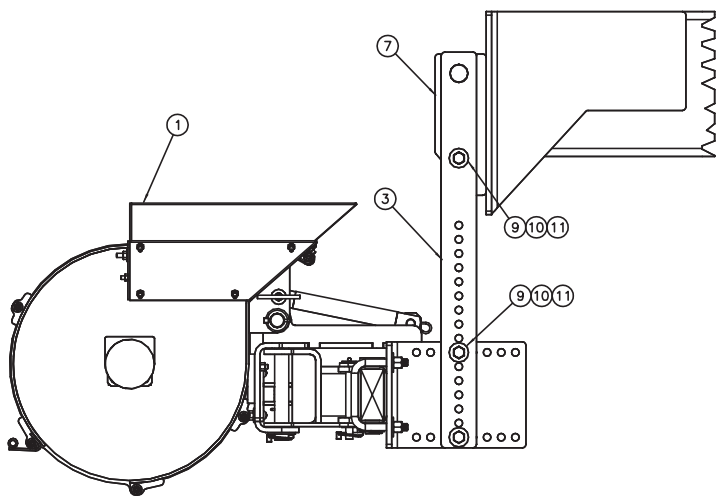
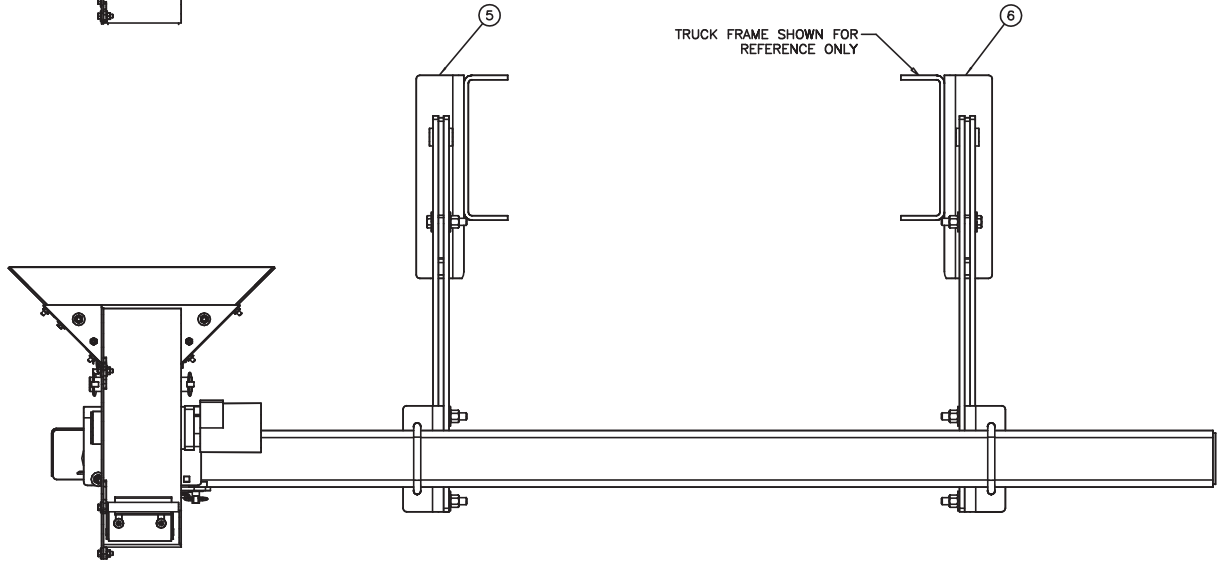
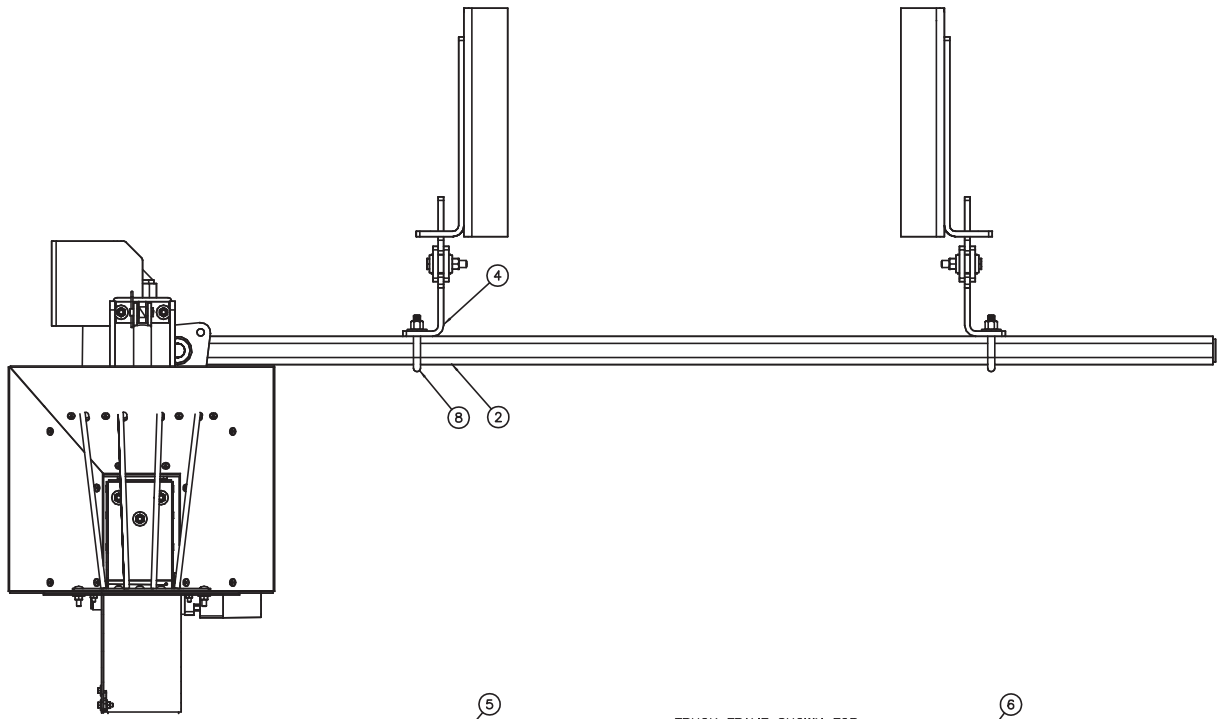
1. To turn power on in the closed loop spinner control console, push the toggle switch labeled "Power" up to the ON position. To turn the power off in the closed loop spinner control console, push this switch down to the OFF position. This control console can be turned ON or OFF at any time or with the spinner in any position without causing any damage to the control console or the Accu-place spinner assembly.
2. To raise or lower the Accu-place spinner, activate and hold the momentary toggle switch labeled "Actuator" either up or down depending on the height desired. This function of the Accu-place spinner is used to allow additional ground clearance when required. (**WARNING: DO NOT spread material with the Accu-place spinner while in the raised position. This will cause material to be thrown into the air which could cause human injury and/or property damage**).
3. To raise or lower the deflector, activate and hold the momentary toggle switch labeled "Deflector" either up or down depending on the application required. This function of the Accu-place spinner is used to position a deflector plate in the discharge stream of the granular material to widen the spread pattern. (A typical application for this function would be to widen your spread pattern as you pass through an intersection while spreading in zero velocity mode).
4. To change the placement of the discharging granular material on the road's surface, activate and hold the momentary toggle switch labeled "Rotate" either to the left or to the right depending on the granular placement required. (Applications where this function may be required include: spreading during a cross wind, spreading on banked curves, operator wanting to position material on a particular area of the road's surface, etc.).

Note: The "seven indicator lights" on the control panel will inform the operator of the approximate direction that the spinner is discharging granular material.

# ACCU-PLACE FLOW CHART

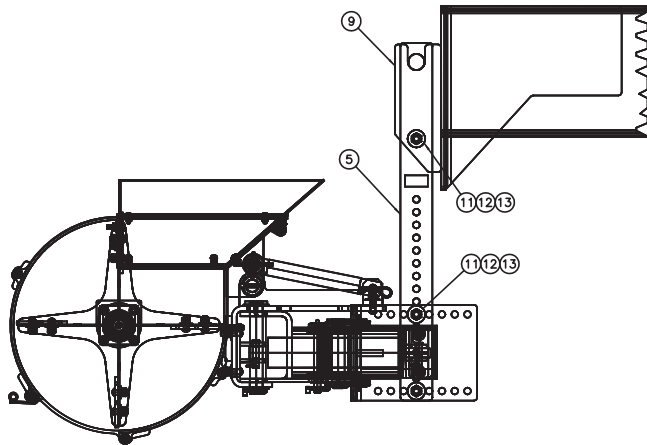
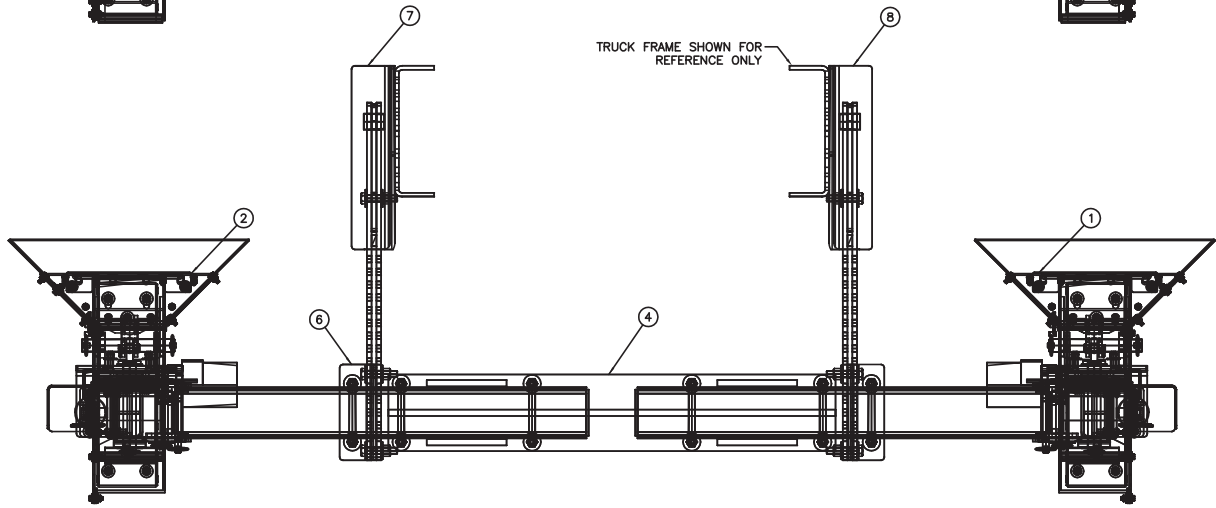
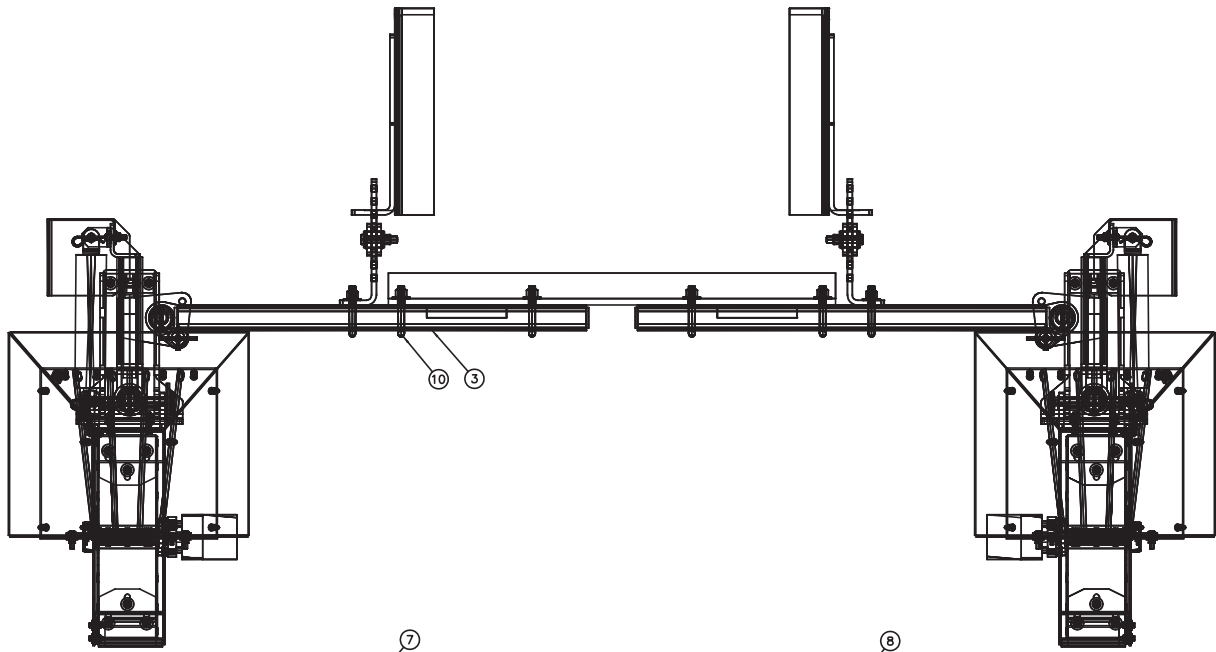






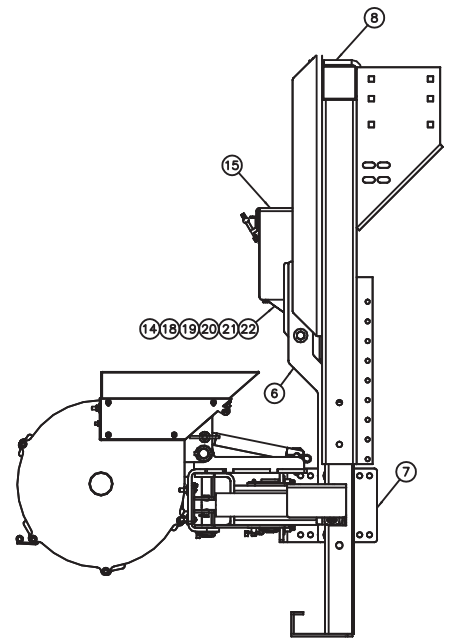
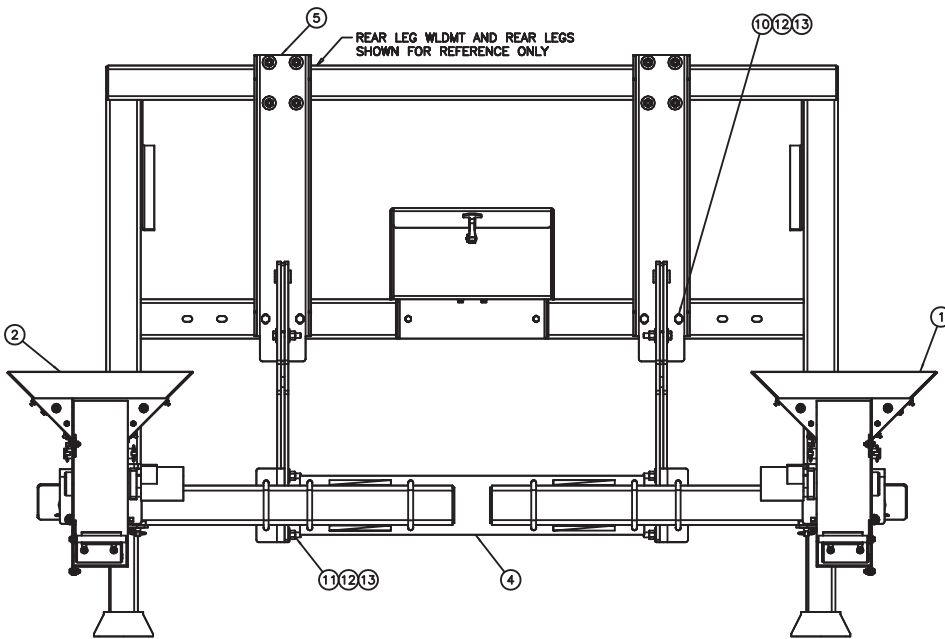
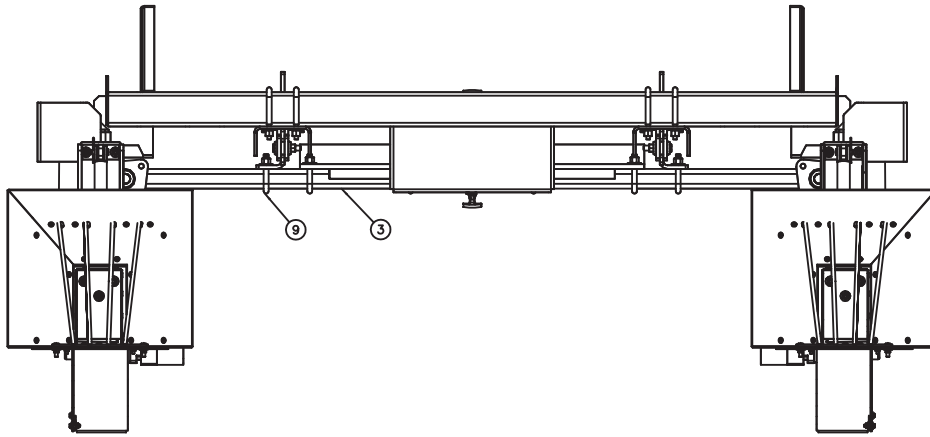
**00084164 MOUNTING KIT, ACCU-PLACE, TRK MNT, LH SPINNER 304**

ITEM	QTY	PART NUMBER	DESCRIPTION
1	1	00081073	SPINNER ASSY,ACCU-PLACE,LH,304 <i>See Page 20</i>
2	1	00081071	MOUNT WLDMT,ACCU-PLACE,304SST
3	2	00081063	HANGER WLDMT,TRUCK FRAME,304SS
4	2	00084108	MOUNT PL,HANGER,U-BOLT,304SST
5	1	00081055	MOUNT PL,TRUCK FRAME,LH,304SST
6	1	00081056	MOUNT PL,TRUCK FRAME,RH,304SST
7	2	00081061	BRACKET,MOUNT,HANGER,304SST
8	2	05017002	U-BOLT,SQ, .500-13,4.063x3.500
9	6	05016207	BOLT .500-13 x 2.50 HHCS SST
10	6	05020908	NUT .500-13 NYLON LOCK 316 SST
11	12	05021391	WASHER .500 FLAT SST



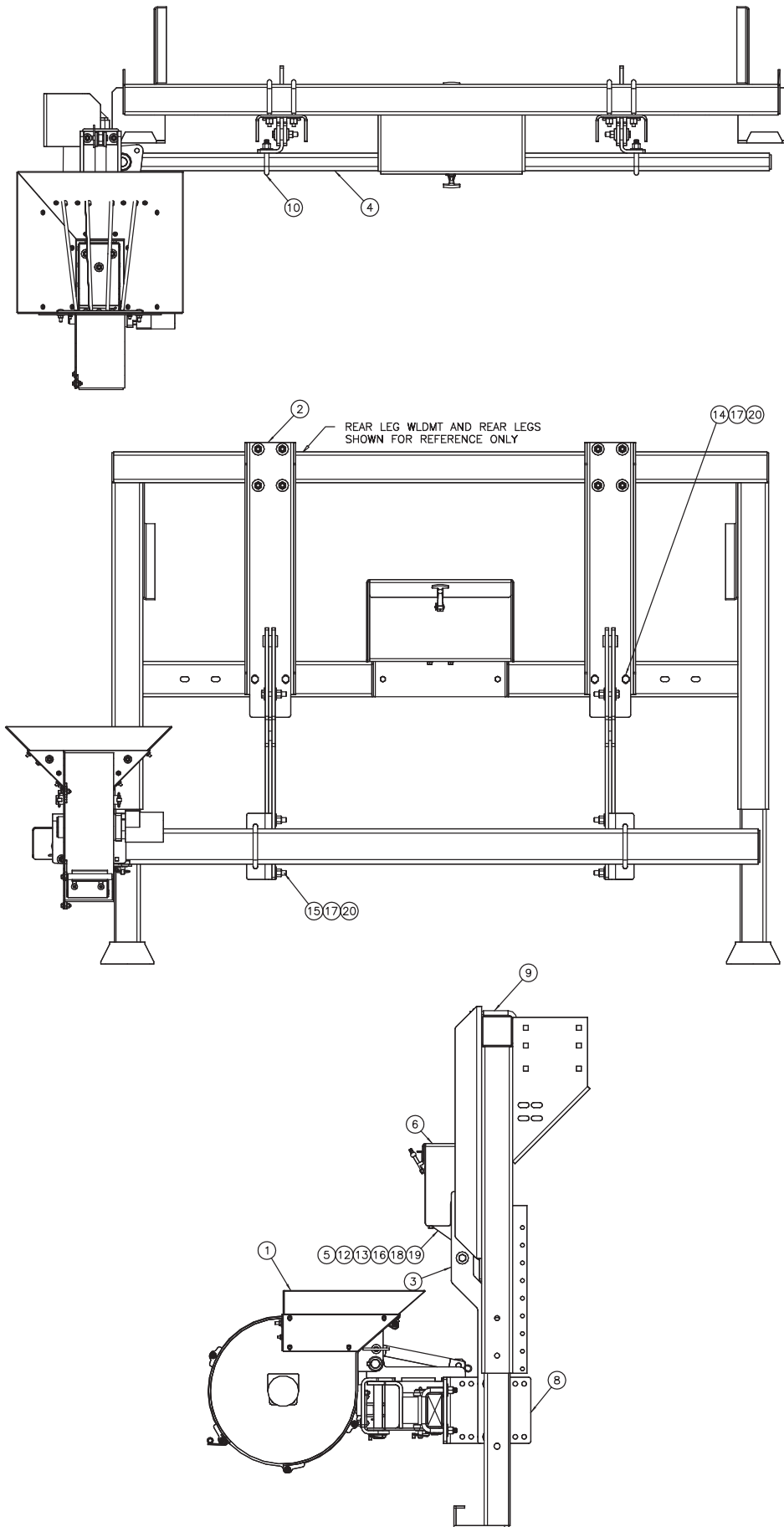
**00084165 MOUNTING KIT, ACCU-PLACE, TRCK MNT, DUAL SPINNER**

ITEM	QTY	PART NUMBER	DESCRIPTION
1	1	00081072	SPINNER ASSY,ACCU-PLACE,RH,304 <i>See Page 16</i>
2	1	00081073	SPINNER ASSY,ACCU-PLACE,LH,304 <i>See Page 20</i>
3	2	00084159	MOUNT WLDMT,ACCU-PLACE,DUAL SPINNER,304
4	1	00084161	BRACE WLDMT,ACCU-PLACE,DUAL SPINNER,304
5	2	00081063	HANGER WLDMT,TRUCK FRAME SPINNER,304
6	2	00084108	MOUNT PL,HANGER,SPINNER,304
7	1	00081055	MOUNT PL,TRUCK FRAME,SPINNER,LH,304
8	1	00081056	MOUNT PL,TRUCK FRAME,SPINNER,RH,304
9	2	00081061	BRACKET,MOUNT,HANGER,SPINNER,304
10	6	05017002	U-BOLT,SQ, .500-13,4.063x3.500,304
11	6	05016207	BOLT .500-13 x 2.50 HHCS SS
12	6	05020908	NUT .500-13 NYLON LOCK 316 SS
13	12	05021391	WASHER .500 FLAT SS



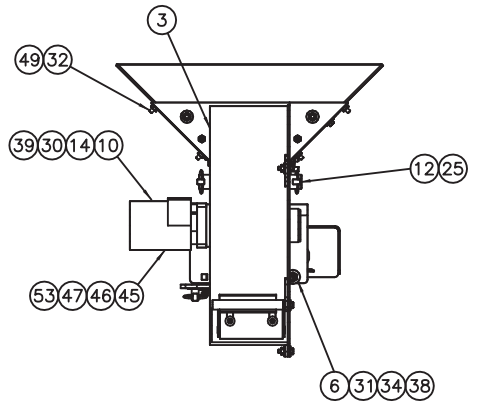
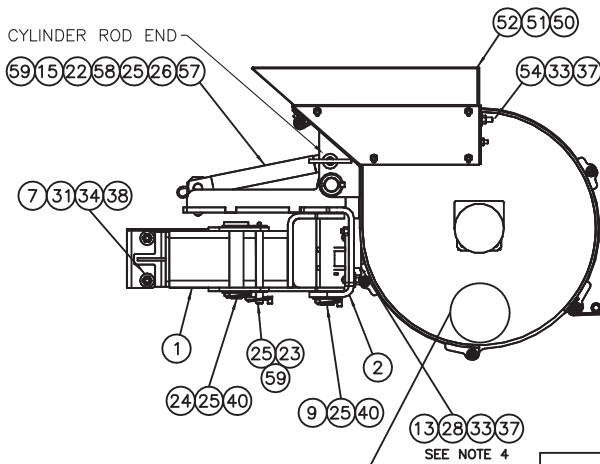
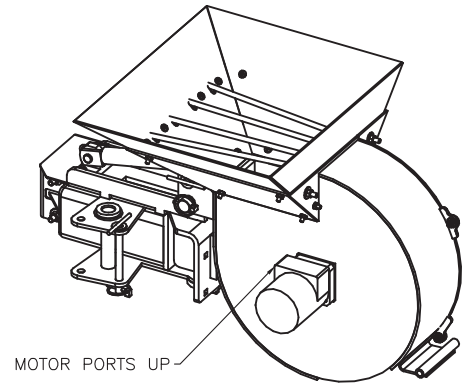
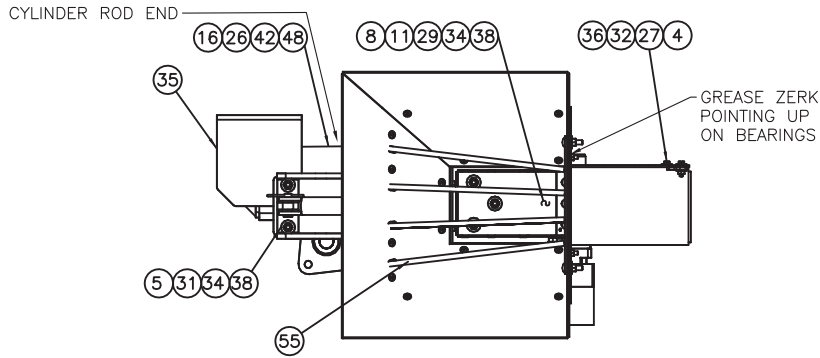
**00084166 MOUNTING KIT, ACCU-PLACE, SKD MNT, DUAL SPINNER**

ITEM	QTY	PART NUMBER	DESCRIPTION
1	1	00081072	SPINNER ASSY,ACCU-PLACE,RH,304 <i>See Page 16</i>
2	1	00081073	SPINNER ASSY,ACCU-PLACE,LH,304 <i>See Page 20</i>
3	2	00084159	MOUNT WLDMT,ACCU-PLACE,DUAL SPNR,304
4	1	00084161	BRACE WLDMT,ACCU-PLACE,DUAL SPNR,304
5	2	00084122	MOUNT WLDMT,LEG/SKID,SPINNER,304
6	2	00084124	HANGER WLDMT,LEG/SKID,SPINNER,304
7	2	00084108	MOUNT PL,HANGER,SPINNER,304
8	4	00037725	U-BOLT,SQ,.500-13,3.625x4.798,304
9	6	05017002	U-BOLT,SQ,.500-13,4.063x3.500,304
10	4	05016096	BOLT .500-13 x 1.50 HHCS SS
11	6	05016207	BOLT .500-13 x 2.50 HHCS SS
12	10	05020908	NUT .500-13 NYLON LOCK 316 SS
13	16	05021391	WASHER .500 FLAT SS
14	1	00086385	BASE WLDMT,HOUSING,VALVE
15	1	00086387	COVER WLDMT,HOUSING,VALVE
16	2	00086524	HOSE KIT,ACCU-PLACE,SKID MOUNT
17	7'	05051396	TRIM,BULB,.375x.125,FINE
18	3	05016136	BOLT .313-18 x .750 HHCS SST
19	4	05016034	BOLT .375-16 x 1.00 HHCS SS
20	4	05020891	NUT .375-16 NYLON LOCK 316 SS
21	3	05021407	WASHER .313 LOCK SS
22	4	05021390	WASHER .375 FLAT,SAE SS
23	1	05041472	CABLE ASSY,9 PIN EXTENSIONx10'

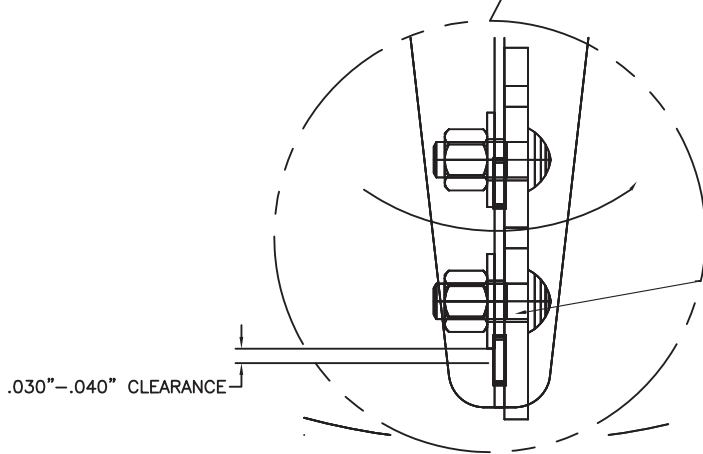


00017188 MOUNTING KIT, ACCU-PLACE, SKD MNT, LH SPINNER, 304			
ITEM	QTY	PART NUMBER	DESCRIPTION
1	1	00081073	SPINNER ASSY,ACCU-PLACE,LH,304 <i>See Page 20</i>
2	2	00084122	MOUNT WLDMT,LEG/SKID,304SST
3	2	00084124	HANGER WLDMT,LEG/SKID,304SST
4	1	00081071	MOUNT WLDMT,ACCU-PLACE,304SST
5	1	00086385	BASE WLDMT,HOUSING,VALVE,
6	1	00086387	COVER WLDMT,HOUSING,VALVE
7	1	00086524	HOSE KIT,ACCU-PLACE,SKID MOUNT
8	2	00084108	MOUNT PL,HANGER,U-BOLT,304SST
9	4	00037725	U-BOLT, SQ, .500-13,3.625x4.798
10	2	05017002	U-BOLT,SQ,.500-13,4.063x3.500
11	7'	05051396	TRIM,BULB,.375x.125,FINE
12	3	05016136	BOLT .313-18 x .750 HHCS SST
13	4	05016034	BOLT .375-16 x 1.00 HHCS SST
14	4	05016096	BOLT .500-13 x 1.50 HHCS SST
15	6	05016207	BOLT .500-13 x 2.50 HHCS SST
16	4	05020891	NUT .375-16 NYLON LOCK 316 SST
17	10	05020908	NUT .500-13 NYLON LOCK 316 SST
18	3	05021407	WASHER .313 LOCK SST
19	4	05021390	WASHER .375 FLAT SST
20	16	05021391	WASHER .500 FLAT SST
21	1	05041472	CABLE ASSY,9 PIN EXTENSIONx10'





Notes:	
1.	Determine direction of impeller rotation
2.	Install impeller pads on the forward (leading) side of each impeller blade.
3.	Install fastener heads at the impeller pad as shown.
4.	Adjust the pads for 0.030–0.040" clearance between the edge of the pad and the housing.
5.	Rotate the impeller and check for contact between the pads and the housing.
6.	Increase the pad-to-housing clearance until there is no contact as the impeller rotates.
7.	Tighten the fasteners to 15–20 ft/lbs.
8.	Bearing grease zerk must face UP
9.	All cylinder ports must face TOWARD the motor



ITEM 11 MOUNTS ON LEADING SIDE OF IMPELLER (4x)  
(IMPELLER ROTATES COUNTER-CLOCKWISE)

- NOTES: 1. ITEMS 17 & 60 NOT SHOWN. THESE TWO ITEMS NEED TO BE ASSEMBLED FINGER TIGHT AND THE CAVITY AROUND THE SENSOR MUST BE "POTTED" WITH SILICONE TYPE SEALER.  
2. ITEMS 18, 19, 20, 21, 41, AND 43 NOT SHOWN.  
3. HIDDEN LINES OMITTED FOR CLARITY.  
4. ITEM# 44(SHIM,14GA,304SST) NOT SHOWN AND WILL BE REQUIRED AS NEEDED WHEN ITEM# 13(FLAP,RUBBER) WEARS DOWN.

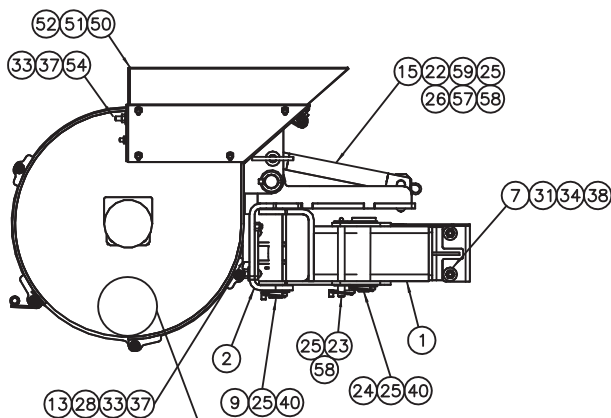
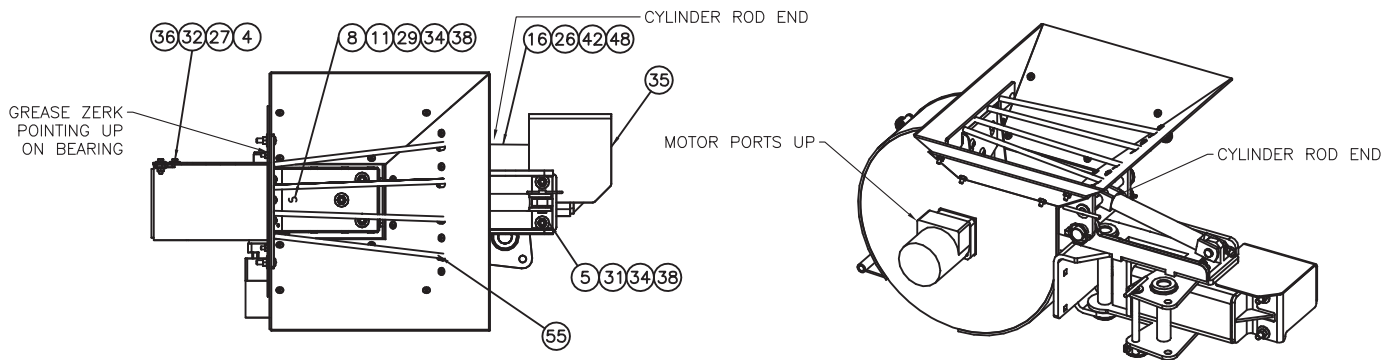
**00081072 SPINNER ASSEMBLY, ACCU-PLACE, RH, 304**

ITEM	QTY	PART NUMBER	DESCRIPTION
1	1	00084155-A	MOUNT WLDMT,SPINNER,RH,304
2	1	00059965	MOUNT WLDMT,HOUSING,ACCU-PLACE
3	1	00054898-A	HOUSING WLDMT,ACCU-PLACE,RH,
4	1	00084157-A	HOUSING WLDMT,RH,ACCU-PLACE,
5	1	00072525	BRACKET WLDMT,CYLINDER,304
6	1	00075597-A	BRACKET WLDMT,ROT CYLINDER,304
7	1	00075598-A	BRACKET WLDMT,ROT CYLINDER,304
8	1	00075592-A	IMPELLER WLDMT,ACCU-PLACE
9	1	00081082-A	PIN WLDMT,1.000 DIA x 6.625 GL
10	1	00059960-A	SPACER PL,MOTOR,SPINNER,304
11	4	00075593	PAD,IMPELLER,ACCU-PLACE,
12	1	00066528	PIN 1.00 DIAx 7.250,2-HOLE,SSR
13	1	00066542	FLAP,RUBBER,SPINNER,ACCU-PLACE
14	1	05006408	MOTOR,HYD,PRKR,3CI,4B,1"SHAFT, <i>See Page 27</i>
15	1	05002614	CYLINDER,1.5x1.5,NITRO-BAR ROD <i>See Page 28</i>
16	1	05002761	CYLINDER,2x4,DA,FEEDBACK <i>See Page 29</i>
17	1	05040458	METER,FLOW .5"X5NPT,75-7.5GPM <i>See Page 30</i>
18	1	05044206	VALVE,HYD,3-4 WAYS,LD SENSE,PT
19	1	05041629	CONSOLE ASSY,LIFT,TURN/DEFLECT
20	1	05040356	CABLE ASSY,LIFT & TURN
21	1	05040357	CABLE ASSY,LIFT & TURN
22	1	05022191	PIN .5 x 1.50 CLEVIS SS,
23	1	00111519	PIN WLDMT,T-HDL,.500 DIAx5.500
24	1	00111517-A	PIN WLDMT,1.000 DIA x 4.774 GL,SS
25	6	05022106	PIN .188 LYNCH
26	3	05022035	PIN #11 HAIR ZC
27	5	05016114	BOLT .250-20 x .875 HHCS SST
28	2	05016141	BOLT .313-18 x 1.75 HHCS SST
29	12	05016003	BOLT .375-16 x 1.00 CRG SST
30	4	05016034	BOLT .375-16 x 1.00 HHCS SST
31	6	05016747	BOLT .375 x 1.50 SST CARRIAGE
32	21	05020906	NUT .250-20 NYLON LOCK 316 SST
33	4	05020907	NUT .313-18 NYLON LOCK 316 SST
34	18	05020891	NUT .375-16 NYLON LOCK 316 SST
35	1	00098577-A	SHIELD WLDMT,RH,CYLINDER,SST
36	10	05021403	WASHER .250 FLAT SST
37	4	05021404	WASHER .313 FLAT SST
38	18	05021390	WASHER .375 FLAT SST
39	4	05021392	WASHER .375 LOCK SST
40	4	05021449	WASHER 1.00 FLAT SST
41	1	05041557	CABLE ASSY,LIFT & TURN,VALVE

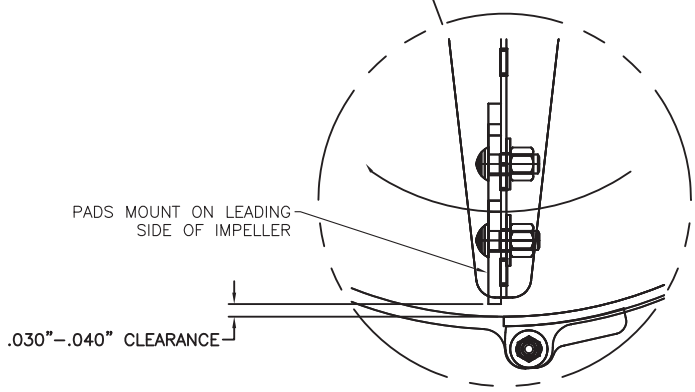
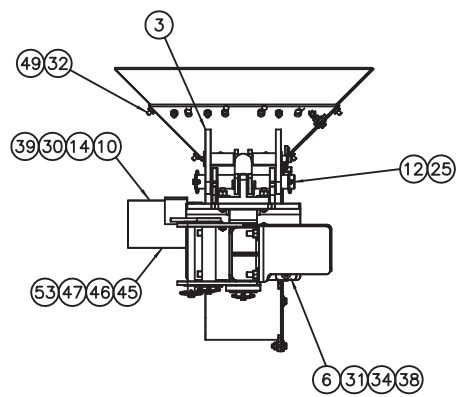
**00081072 SPINNER ASSEMBLY, ACCU-PLACE, RH, 304**

ITEM	QTY	PART NUMBER	DESCRIPTION
42	1	05022192	PIN .5 x 1.75 CLEVIS SS
43	1	00097980-A	BRACKET,AMP HARNESS,16 PIN
44	5	00098537	SHIM,ACCU-PLACE,14GA,304SST
45	1	05017038	BOLT .250-20 x 4.50 HHCS SS
46	1	05021412	WASHER .313 x 1.50 FENDER SS
47	1	05021393	WASHER .250 LOCK SST
48	1	05022207	PIN .500 x 2.000 CLEVIS SS
49	16	05016967	SCREW .25-20 x .75 PH TRS HD
50	2	00098529	DEFLECTOR,CHUTE,SIDE,
51	1	00098530	DEFLECTOR,CHUTE,FRONT,
52	1	00098531	DEFLECTOR,CHUTE,REAR,
53	1	00098534	SHAFT,SPACER,ACCU-PLACE,304SS
54	2	05016721	BOLT .313-18 x 1.25 CRG SST
55	1	00098527-A	GRATE WLDMT,ACCU-PLACE,
56	1	05051435	CARDBOARD,BOX,18.5"x18.5"x10.5
57	1	05038678	FITTING,ADAPTER,.4375"JICx.4375 ORB
58	1	00111522	PIN WLDMT,T-HDL,.500 DIAx6.375
59	4	05021450	WASHER .500 FLAT SAE SS 18-8
60	1	05040457	SENSOR,FLOW METER F/05040458

LEFT INTENTIONALLY BLANK



SEE NOTE 4



Notes:	
1.	Determine direction of impeller rotation
2.	Install impeller pads on the forward (leading) side of each impeller blade.
3.	Install fastener heads at the impeller pad as shown.
4.	Adjust the pads for 0.030–0.040" clearance between the edge of the pad and the housing.
5.	Rotate the impeller and check for contact between the pads and the housing.
6.	Increase the pad-to-housing clearance until there is no contact as the impeller rotates.
7.	Tighten the fasteners to 15–20 ft/lbs.
8.	Bearing grease zerk must face UP
9.	All cylinder ports must face TOWARD the motor

ITEM 11 MOUNTS ON LEADING SIDE OF IMPELLER (4x)  
(IMPELLER ROTATES CLOCKWISE)

NOTES: 1. ITEMS 17 & 60 NOT SHOWN. THESE TWO ITEMS NEED TO BE ASSEMBLED FINGER TIGHT AND THE CAVITY AROUND THE SENSOR MUST BE "POTTED" WITH SILICONE TYPE SEALER  
2. ITEMS 18, 19, 20, 21, 41, AND 43 NOT SHOWN.  
3. HIDDEN LINES OMITTED FOR CLARITY.  
4. ITEM# 44(SHM,14GA,304SST) NOT SHOWN AND WILL BE REQUIRED AS NEEDED WHEN ITEM# 13(FLAP,RUBBER) WEARS DOWN.

**00081073 SPINNER ASSEMBLY, ACCU-PLACE, LH, 304**

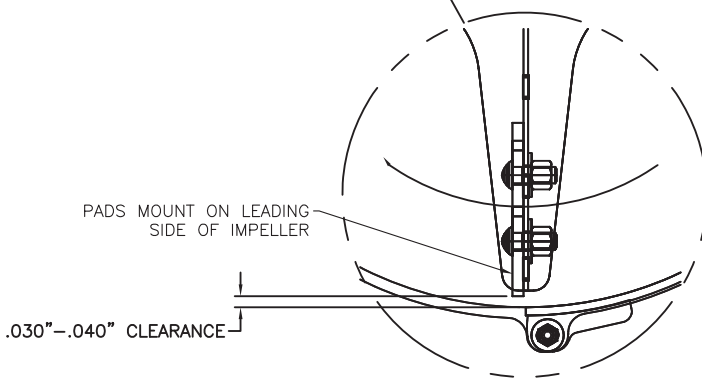
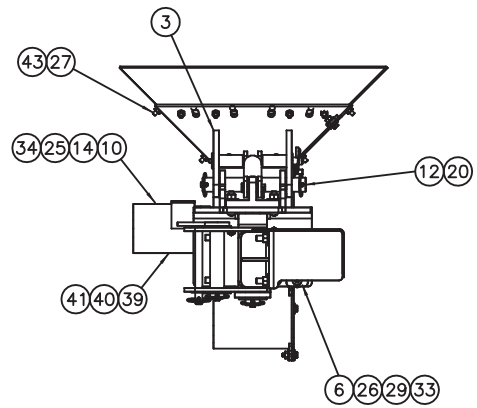
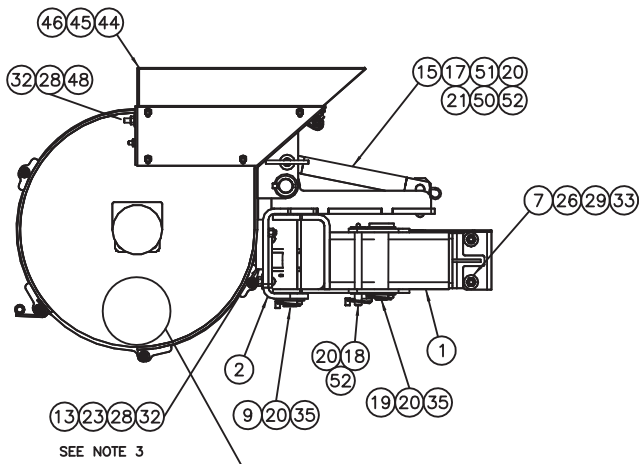
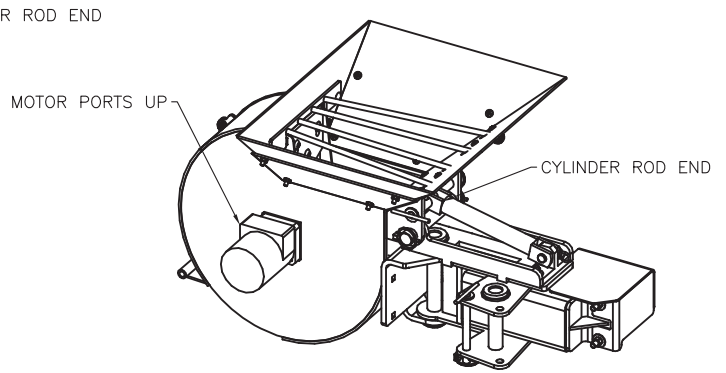
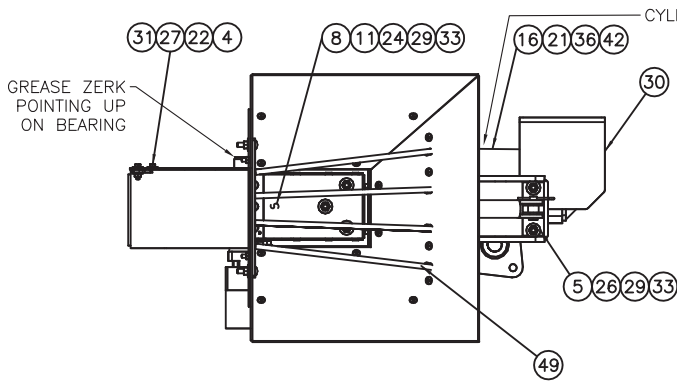
ITEM	QTY	PART NUMBER	DESCRIPTION
1	1	00072514-A	MOUNT WLDMT,SPINNER,LH,304
2	1	00059965	MOUNT WLDMT,HOUSING,ACCU-PLACE
3	1	00098538-A	HOUSING WLDMT,ACCU-PLACE,LH,
4	1	00059968-A	HOUSING WLDMT,LH,ACCU-PLACE,
5	1	00072525	BRACKET WLDMT,CYLINDER,304
6	1	00075597-A	BRACKET WLDMT,ROT CYLINDER,304
7	1	00075598-A	BRACKET WLDMT,ROT CYLINDER,304
8	1	00075592-A	IMPELLER WLDMT,ACCU-PLACE
9	1	00081082-A	PIN WLDMT,1.000 DIA x 6.625 GL,SS
10	1	00059960-A	SPACER PL,MOTOR,SPINNER,304
11	4	00075593	PAD,IMPELLER,ACCU-PLACE,
12	1	00066528	PIN 1.00 DIAx 7.250,2-HOLE,SSR
13	1	00066542	FLAP,RUBBER,SPINNER,ACCU-PLACE
14	1	05006408	MOTOR,HYD,PRKR,3CI,4B,1"SHAFT, <i>See Page 27</i>
15	1	05002614	CYLINDER,1.5x1.5,NITRO-BAR ROD <i>See Page 28</i>
16	1	05002761	CYLINDER,2x4,DA,FEEDBACK <i>See Page 29</i>
17	1	05040458	METER,FLOW .5"X5NPT, .75-7.5GPM <i>See Page 30</i>
18	1	05044206	VALVE,HYD,3-4 WAYS,LD SENSE,PT
19	1	05041629	CONSOLE ASSY,LIFT,TURN/DEFLEC
20	1	05040356	CABLE ASSY,LIFT & TURN
21	1	05040357	CABLE ASSY,LIFT & TURN
22	1	05022191	PIN .5 x 1.50 CLEVIS SS,
23	1	00111519	PIN WLDMT,T-HDL,.500 DIAx5.500
24	1	00111517-A	PIN WLDMT,1.000 DIA x 4.774 GL,SS
25	6	05022106	PIN .188 LYNCH
26	3	05022035	PIN #11 HAIR ZC
27	5	05016114	BOLT .250-20 x .875 HHCS SST
28	2	05016141	BOLT .313-18 x 1.75 HHCS SST
29	12	05016003	BOLT .375-16 x 1.00 CRG SST
30	4	05016034	BOLT .375-16 x 1.00 HHCS SST
31	6	05016747	BOLT .375 x 1.50 SST CARRIAGE
32	21	05020906	NUT .250-20 NYLON LOCK 316 SST
33	4	05020907	NUT .313-18 NYLON LOCK 316 SST
34	18	05020891	NUT .375-16 NYLON LOCK 316 SST
35	1	00098576-A	SHIELD WLDMT,LH,CYLINDER
36	10	05021403	WASHER .250 FLAT SST
37	4	05021404	WASHER .313 FLAT SST
38	18	05021390	WASHER .375 FLAT SST
39	4	05021392	WASHER .375 LOCK SST
40	4	05021449	WASHER 1.00 FLAT SST
41	1	05041557	CABLE ASSY,LIFT & TURN,VALVE

**00081073 SPINNER ASSEMBLY, ACCU-PLACE, LH, 304**

ITEM	QTY	PART NUMBER	DESCRIPTION
42	1	05022192	PIN .5 x 1.75 CLEVIS SS
43	1	00097980-A	BRACKET,AMP HARNESS,16 PIN
44	5	00098537	SHIM,ACCU-PLACE,14GA,304SST
45	1	05017038	BOLT .250-20 x 4.50 HHCS SS
46	1	05021412	WASHER .313 x 1.50 FENDER SS
47	1	05021393	WASHER .250 LOCK SST
48	1	05022207	PIN .500 x 2.000 CLEVIS SS
49	16	05016967	SCREW .25-20 x .75 PH TRS HD
50	2	00098529	DEFLECTOR,CHUTE,SIDE,
51	1	00098530	DEFLECTOR,CHUTE,FRONT,
52	1	00098531	DEFLECTOR,CHUTE,REAR,
53	1	00098534	SHAFT,SPACER,ACCU-PLACE,304SS
54	2	05016721	BOLT .313-18 x 1.25 CRG SST
55	1	00098527-A	GRATE WLDMT,ACCU-PLACE,
56	1	05051435	CARDBOARD,BOX,18.5"x18.5"x10.5
57	1	05038678	FITTING,ADAPTER,.4375"JICx.4375ORB
58	4	05021450	WASHER .500 FLAT SAE SS 18-8
59	1	00111522	PIN WLDMT,T-HDL,.500 DIAx6.375
60	1	05040457	SENSOR,FLOW METER F/05040458

LEFT INTENTIONALLY BLANK





Notes:	
1.	Determine direction of impeller rotation
2.	Install impeller pads on the forward (leading) side of each impeller blade.
3.	Install fastener heads at the impeller pad as shown.
4.	Adjust the pads for 0.030–0.040" clearance between the edge of the pad and the housing.
5.	Rotate the impeller and check for contact between the pads and the housing.
6.	Increase the pad-to-housing clearance until there is no contact as the impeller rotates.
7.	Tighten the fasteners to 15–20 ft/lbs.
8.	Bearing grease zerks must face UP
9.	All cylinder ports must face TOWARD the motor

ITEM 11 MOUNTS ON LEADING SIDE OF IMPELLER (4x)  
(IMPELLER ROTATES CLOCKWISE)

NOTES: 1. ITEM 37 NOT SHOWN.  
2. HIDDEN LINES OMITTED FOR CLARITY.  
3. ITEM# 38(SHIM,14GA,304SST) NOT SHOWN AND WILL BE REQUIRED AS NEEDED WHEN ITEM# 13(FLAP,RUBBER) WEARS DOWN.

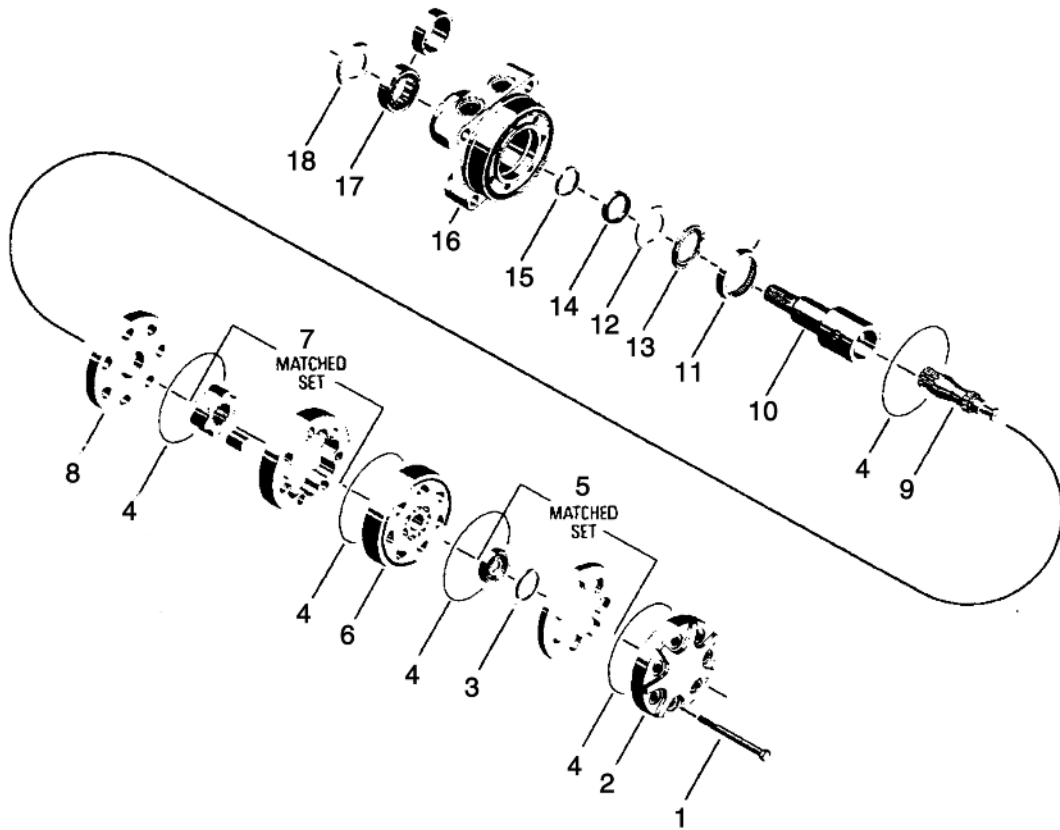
**00040072 SPINNER ASSEMBLY, ACCU-PLACE, LH, 304 W/ FLOW MTR**

ITEM	QTY	PART NUMBER	DESCRIPTION
1	1	00072514-A	MOUNT WLDMT,SPINNER,LH,304
2	1	00059965	MOUNT WLDMT,HOUSING,ACCU-PLACE
3	1	00098538-A	HOUSING WLDMT,ACCU-PLACE,LH,
4	1	00059968-A	HOUSING WLDMT,LH,ACCU-PLACE,
5	1	00072525	BRACKET WLDMT,CYLINDER,304
6	1	00075597-A	BRACKET WLDMT,ROT CYLINDER,304
7	1	00075598-A	BRACKET WLDMT,ROT CYLINDER,304
8	1	00075592-A	IMPELLER WLDMT,ACCU-PLACE
9	1	00081082-A	PIN WLDMT,1.000 DIA x 6.625 GL
10	1	00059960-A	SPACER PL,MOTOR,SPINNER
11	4	00075593	PAD,IMPELLER,ACCU-PLACE,
12	1	00066528	PIN 1.00 DIAx 7.250,2-HOLE,SSR
13	1	00066542	FLAP,RUBBER,SPINNER,ACCU-PLACE
14	1	05006408	MOTOR,HYD,PRKR,3CI,4B,1"SHAFT, <i>See Page 27</i>
15	1	05002614	CYLINDER,1.5x1.5,NITRO-BAR ROD <i>See Page 28</i>
16	1	05002761	CYLINDER,2x4,DA,FEEDBACK <i>See Page 29</i>
17	1	05022191	PIN .5 x 1.50 CLEVIS SS,
18	1	00111519	PIN WLDMT,T-HDL,.500 DIAx5.500
19	1	00111517-A	PIN WLDMT,1.000 DIA x 4.774 GL,SS
20	6	05022106	PIN .188 LYNCH
21	3	05022035	PIN #11 HAIR ZC
22	5	05016114	BOLT .250-20 x .875 HHCS SST
23	2	05016141	BOLT .313-18 x 1.75 HHCS SST
24	12	05016003	BOLT .375-16 x 1.00 CRG SST
25	4	05016034	BOLT .375-16 x 1.00 HHCS SST
26	6	05016747	BOLT .375 x 1.50 SST CARRIAGE
27	21	05020906	NUT .250-20 NYLON LOCK 316 SST
28	4	05020907	NUT .313-18 NYLON LOCK 316 SST
29	18	05020891	NUT .375-16 NYLON LOCK 316 SST
30	1	00098576-A	SHIELD WLDMT,LH,CYLINDER
31	10	05021403	WASHER .250 FLAT SST
32	4	05021404	WASHER .313 FLAT SST
33	18	05021390	WASHER .375 FLAT SST
34	4	05021392	WASHER .375 LOCK SST
35	4	05021449	WASHER 1.00 FLAT SST
36	1	05022192	PIN .5 x 1.75 CLEVIS SS
37	1	00097980-A	BRACKET,AMP HARNESS,16 PIN
38	5	00098537	SHIM,ACCU-PLACE,14GA,304SST
39	1	05017038	BOLT .250-20 x 4.50 HHCS SS
40	1	05021412	WASHER .313 x 1.50 FENDER SS
41	1	05021393	WASHER .250 LOCK SST

**00040072 SPINNER ASSEMBLY, ACCU-PLACE, LH, 304 W/ FLOW MTR**

ITEM	QTY	PART NUMBER	DESCRIPTION
42	1	05022207	PIN .500 x 2.000 CLEVIS SS
43	16	05016967	SCREW .25-20 x .75 PH TRS HD
44	2	00098529	DEFLECTOR,CHUTE,SIDE,
45	1	00098530	DEFLECTOR,CHUTE,FRONT,
46	1	00098531	DEFLECTOR,CHUTE,REAR,
47	1	00098534	SHAFT,SPACER,ACCU-PLACE,304SS
48	2	05016721	BOLT .313-18 x 1.25 CRG SST
49	0=1	00098527-A	GRATE WLDMT,ACCU-PLACE,
50	1	05038678	FITTING,ADAPTER,.4375"JICx.4375 ORB
51	1	00111522	PIN WLDMT,T-HDL,.500 DIAx6.375
52	4	05021450	WASHER .500 FLAT SAE SS 18-8

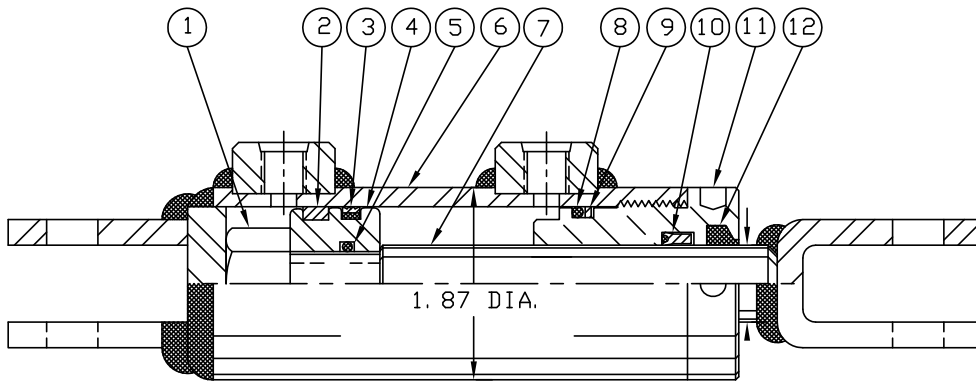
## 05006408 MOTOR, HYDRAULIC, 3 CID



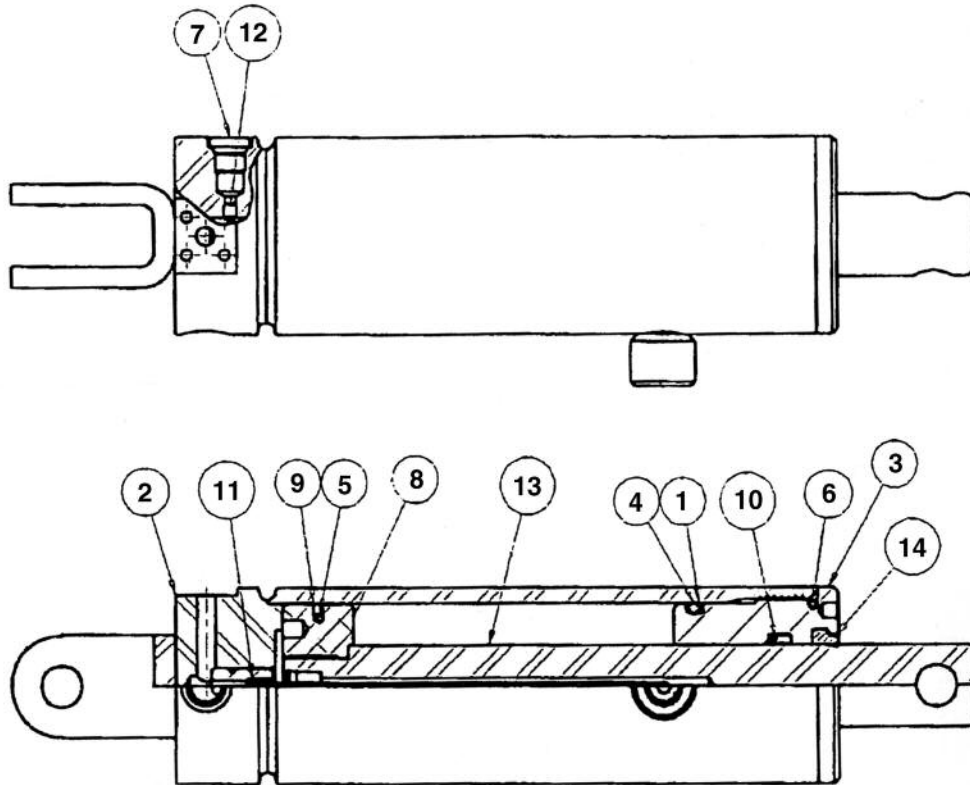
ITEM	QTY	PART #	DESCRIPTION
1	6	05006491	Special Bolt
2	1	05006464	End Cover
3	1	05006471	Commutator Seal
4	5	05006459	Seal Ring
5	1	05006470	Commutator Assembly
6	1	05006463	Manifold
7	1	05006490	Rotor Set
8	1	05006460	Wear Plate
9	1	05006492	Drive Link
10	1	05006457	Coupling Shaft
11	1	05006481	Inner Bearing
12	1	05006455	Thrust Washer
13	1	05006456	Thrust Bearing
14	1	05006454	Seal
15	1	05006453	Backup Washer
16	1	05006493	Housing Assembly
17	1	05006489	Outer Bearing
18	1	05006458	Seal

## 05002614 CYLINDER, 1.5 X 1.5, NITRO-BAR ROD

<i>BEST METAL</i>	ITEM	QTY	PART #	DESCRIPTION
	1	1	05003238	LOCK NUT
	2	1	---	WEAR RING
	3	1	05003239	PISTON STEEL
	4	1	---	PSP SEAL
	5	1	---	O-RING
	6	1	05003233	JACKET ASSEMBLY
	7	1	05003234	PISTON ROD
	8	1	---	O-RING
	9	1	---	BACKUP WASHER
	10	1	---	POLY PAK
	11	1	05003237	GLAND NUT
	12	1	---	ROD WIPER
	13	1	05003224	SEAL KIT



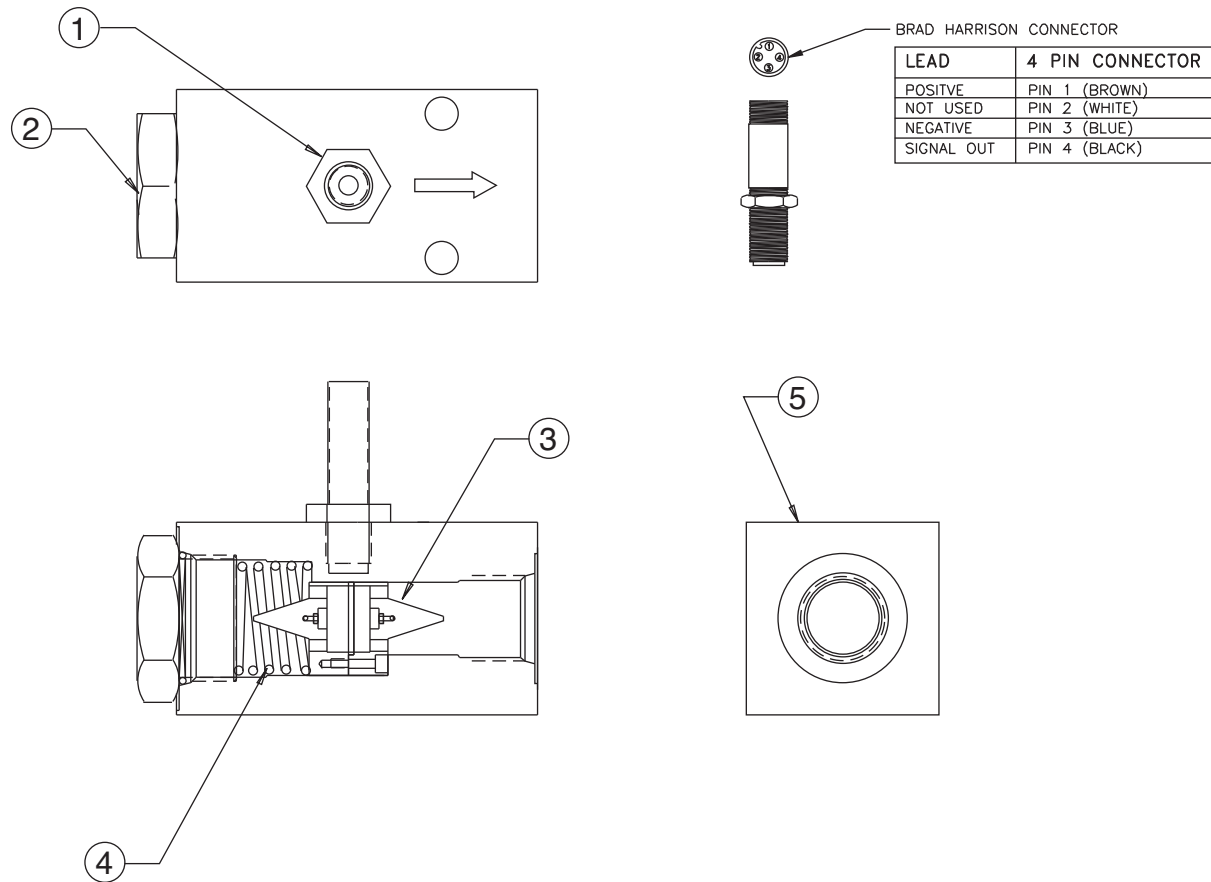
**05002761 CYLINDER, 2" BORE X 4" STROKE, DOUBLE ACTING, FEEDBACK**



ITEM	QTY	PART #	DESCRIPTION
1	1	---	Backup Ring*
2	1	---	Case Assembly
3	1	05002823	Head Gland
4	1	---	O-Ring*
5	1	---	O-Ring*
6	1	---	O-Ring*
7	1	---	O-Ring, Plug #3*
8	1	05002824	Piston
9	1	---	Piston Seal*
10	1	---	Rod Seal*
11	1	05002825	Sensor Assembly
12	1	---	Set Screw*
13	1	05002826	Shaft
14	1	---	Wiper, Snap-In*

\* Sold as a Seal Kit PN: 05002827

## 05040365 Meter, Flow, Hydraulic (Used Prior to May 2010)



ITEM	QTY	PART #	DESCRIPTION
1	1	05040412	Pulse Pick Up
2	1	05040413	Reducer Fitting
3	1	05040414	Turbine Module
4	1	05040415	Spring
5	1	05040416	Body

## 05040458 & 05040457 Meter, Flow, .75-7.5GPM (Used after May 2010) with Sensor



## HOW TO ORDER PARTS

To order or inquire about replacement parts, please contact the **distributor** or **store** that the product was purchased through. To speed the information flow, please have the following information ready:

- Model Number
- Serial Number
- Part Number and/or description as per the parts manual
- Quantity needed

For further information about **Monroe Truck Equipment** replacement parts, please call 800-880-0109 and ask for **Snow & Ice Parts Sales**.

## RETURN POLICY

Merchandise returned to **Monroe Truck Equipment** must have a Returned Goods Authorization (RGA) form filled out completely and signed by authorized personnel. To get your RGA form, call 800-880-0109. For whole goods, ask for **Snow & Ice Sales**. For replacement parts, ask for **Snow & Ice Parts Sales**. All returned items are subject to a 15% restocking fee and must be sent freight prepaid!



## MONROE TRUCK EQUIPMENT, INC. WARRANTY SNOW & ICE CONTROL PRODUCTS

**Monroe Truck Equipment, Inc.** warrants to the original purchaser, that if any part of the product proves to be defective in workmanship or material within **ONE YEAR** of the original installation, and is returned to us within 30 days of the discovered defect, we will (at our option) repair or replace the defective part. This warranty does not apply to damage resulting from misuse, neglect, accident, improper installation, normal wear items or lack of maintenance. This warranty is exclusive and supersedes all other warranties, whether expressed or implied. **Monroe Truck Equipment, Inc.** neither assumes, nor authorizes anyone to assume for it, any other obligation or liability in connection with this warranty and will not be liable for consequential damages.

All engines, pumps, motors, cylinders and valves are warranted by their manufacturer and not by **Monroe Truck Equipment, Inc.**. The manufacturer's warranty will apply to these parts. Electrical and hydraulic components are not to be disassembled without the express written permission of Monroe Truck Equipment. Use of replacement parts other than original equipment voids this warranty.

All defective parts returned must be accompanied by the model number, serial number, date installed, date of defect, description of defect, and the name of the distributor from whom it was purchased. All warranty claims must have prior written approval from **Monroe Truck Equipment, Inc.**

***Please return the warranty registration card that accompanies this manual to confirm receipt of this parts catalog and acknowledge the information contained within. Failure to return the attached card may result in a voided warranty.***





