



BERM MASTER SPREADER

Service and Parts Manual



Monroe Snow & Ice Control

A Division of Monroe Truck Equipment

1051 W. 7th Street

Monroe, WI 53566

Phone: 608-328-8127

Fax: 608-329-8488

Website: www.monroetruck.com

Email: snowandicecontrol@monroetruck.com

05090245-3
11/13/13



TABLE OF CONTENTS

Safety Instructions	2
Maintenance Instructions	3
Replacement Parts	4-7
How to Order Parts	8
Return Policy	8
Warranty Registration	9-10

SAFETY INSTRUCTIONS

- Read all installation, safety and maintenance instructions completely before operating this equipment
- Keep all personnel clear of moving parts while equipment is being operated.
- Do not operate equipment in need of maintenance! Repair immediately!
- While operating this equipment, use common sense, use caution, be alert and be safety-conscious.



! DANGER

AVOID HIGH-PRESSURE FLUIDS

Escaping fluid under pressure can penetrate the skin causing serious injury.

Avoid the hazard by relieving pressure before disconnecting hydraulic or other lines. Tighten all connections before applying pressure.

Search for leaks with a piece of cardboard. Protect hands and body from high pressure fluids.

If an accident occurs, see a doctor immediately. Any fluid injected into the skin must be surgically removed within a few hours or gangrene may result.

MAINTENANCE INSTRUCTIONS

In Season:

- Check for loose bolts and nuts daily, and re-torque before use. (Failure to inspect equipment on a daily basis may seriously affect safety and/or efficiency.)
- Lubricate all grease fittings every ten hours of normal use and more frequently under heavy use. Locations are shown in parts breakdowns of specific models.
- Check all hydraulic fittings for tightness on a regular basis.
- Due to the nature of use and environment this equipment is operating in, damage and wear may occur at anytime. Therefore, **Monroe Truck Equipment** recommends the end user establish and follow a daily inspection routine before using this hitch.

Off Season: *(If Applicable)*

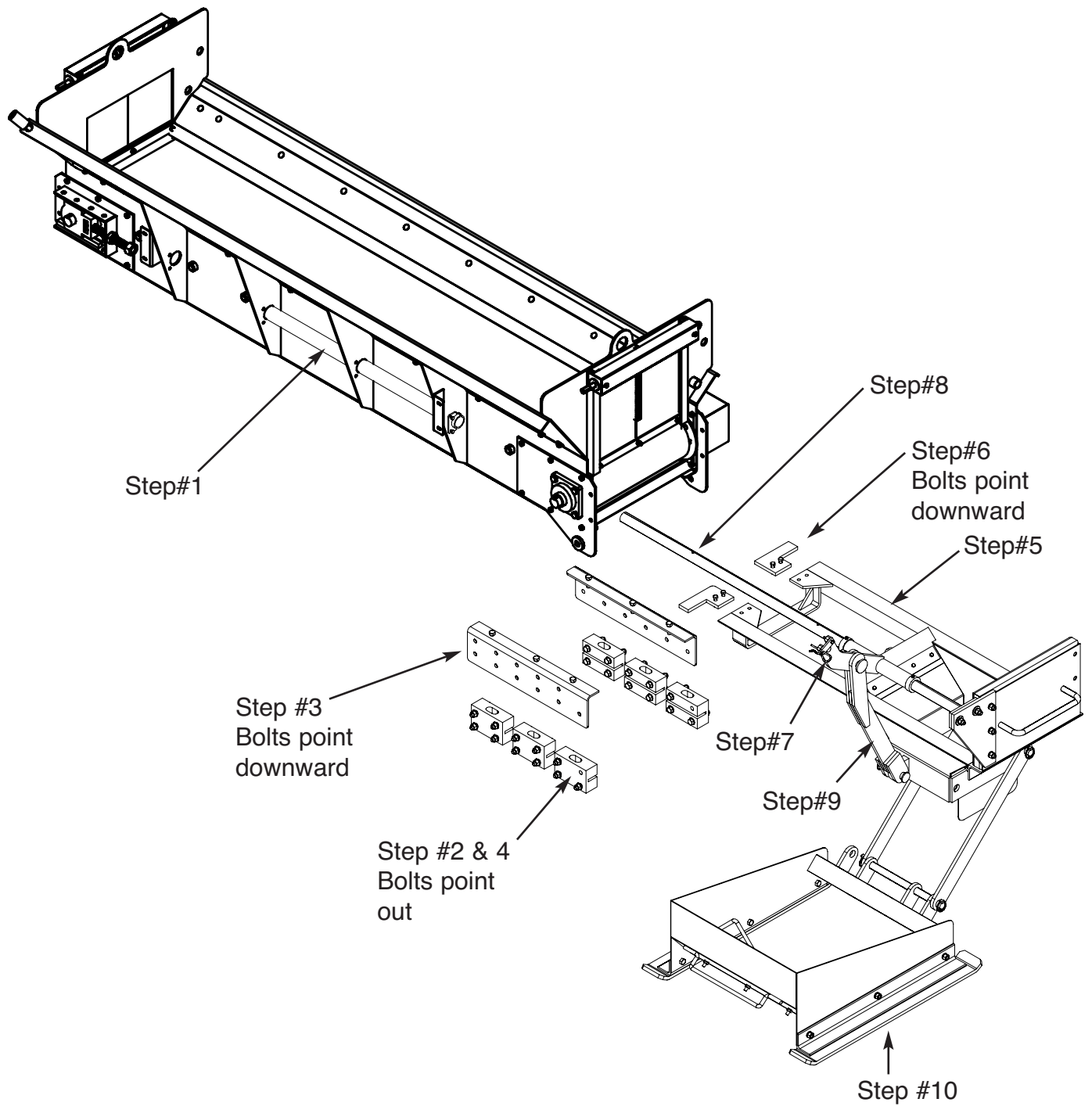
- Use care when disconnecting hydraulic lines to assure that no dirt or foreign objects enter the hydraulic system. Use caps to cover hydraulic hose fittings and insert plugs into hydraulic ports.
- Hydraulic cylinders should be fully retracted when stored during the off season to prevent damage or corrosion. The remaining exposed shaft surface should be coated with a thick grease to prevent corrosion, which must be removed before returning to regular service.
- Check mounting bolts for wear and/or damaged threads and replace before re-mounting.
- Lubricate all grease fittings and pivot points prior to storage.

INSTALLATION INSTRUCTIONS

MANUALLY OPERATED BERM MASTER

1. Install Item #29 (Tube Weldment, Slide) between cross conveyor ribs as shown in Figure 1.
2. Remove the Items #18 (Poly Blocks) from the hanger weldments.
3. Install Items #28 (Hanger Weldment, RH), #16 (Hanger Weldment, LH) under conveyor long members respectable. See Figure 1. (HINT: Make sure all bolts point downward)
4. Re-install Items #18 (Poly Blocks) on the hanger weldments.
(HINT: Make sure all bolts point out.)
5. Slide Item #1 (Berm Box Weldment) in to Items #18 (Poly Block).
6. Secure using Items #12, 40, 41 and 42 (Hardware).
(HINT: Make sure all bolts point downward)
7. Install Item #6 (Hanger Weldment) and Item #45 (Collar) on Item #5 (Slider Weldment).
8. Install sub-assembly from step 7 onto Item #1 using hardware Item #23,24,43.
9. Install Item #4 (Hanger Weldment) between Item #1 (Berm Box Weldment) and Item #6 (Hanger Weldment) using hardware Item #31,32,33.
10. Install Item #10 (Attachment Bar) using hardware Item #33 between Item #1 (Berm Box Weldment) and Item #2 (Box Weldment).

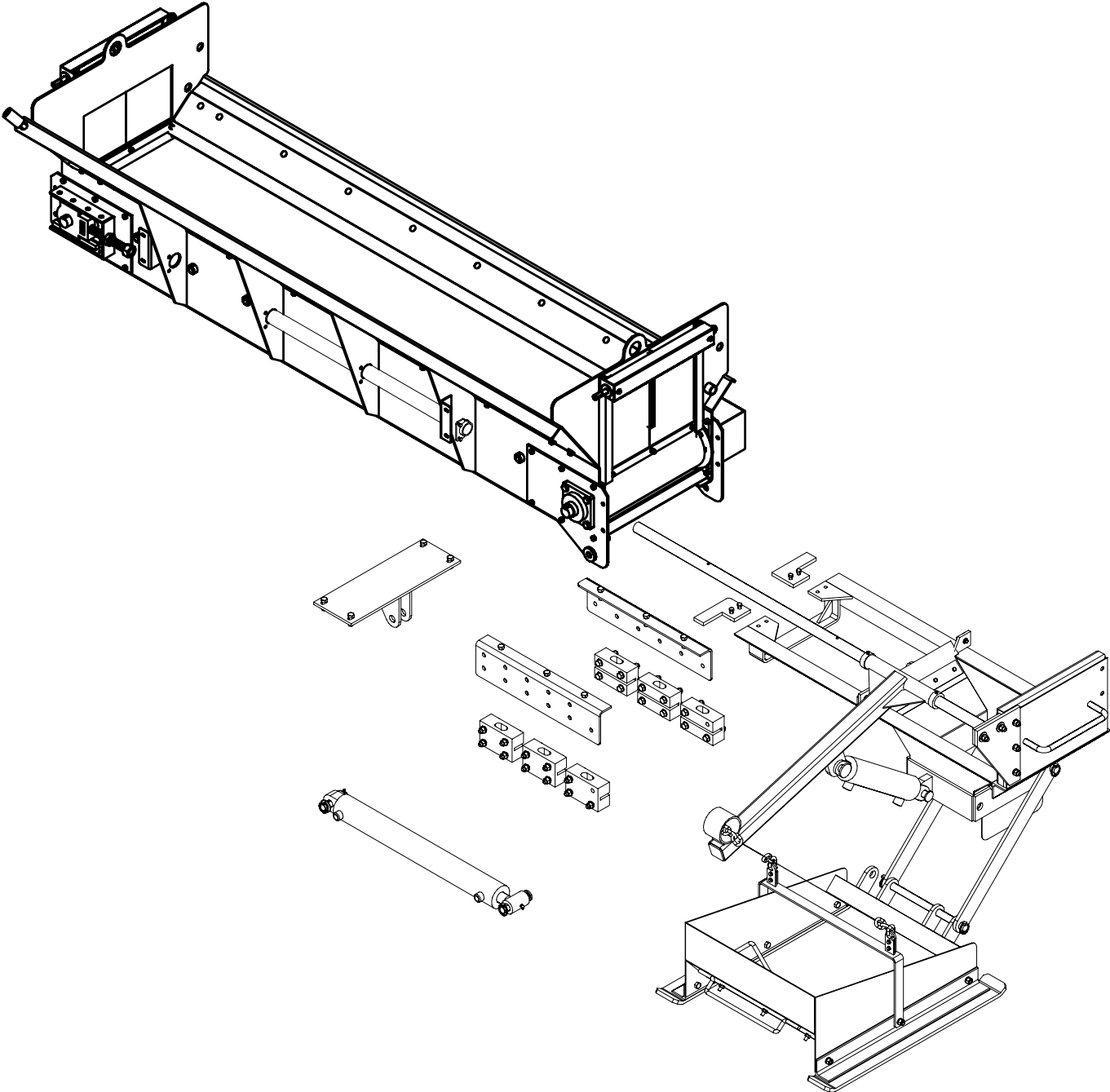
FIGURE 1. MANUAL OPERATED BERM MASTER



INSTALLATION INSTRUCTIONS

HYDRAULIC OPERATED BERM MASTER

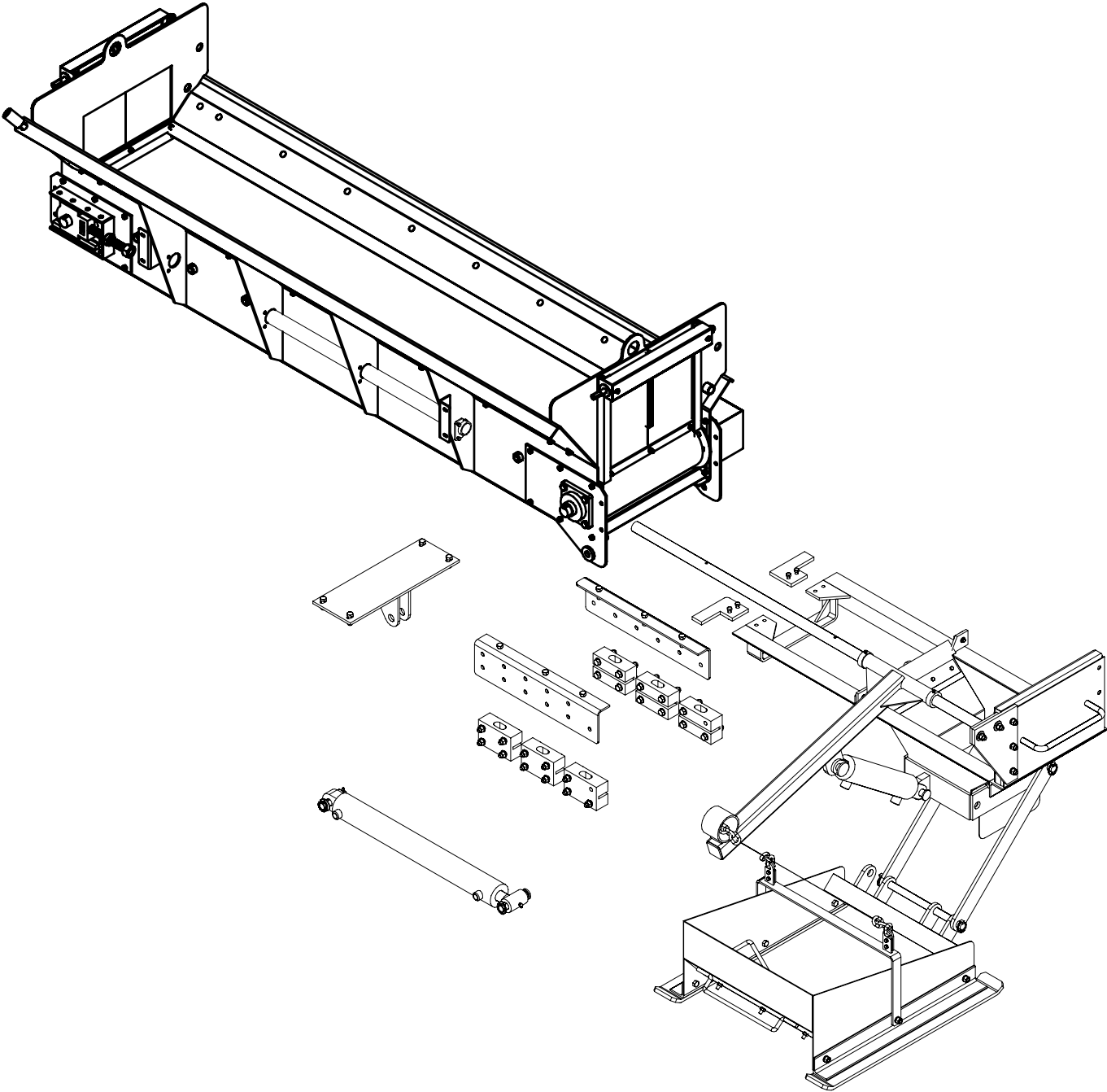
1. Install Item #29 (Tube Weldment, Slide) between cross conveyor ribs as shown in Figure 1.
2. Remove the Items #18 (Poly Blocks) from the hanger weldments.
3. Install Items #28 (Hanger Weldment, RH), #16 (Hanger Weldment, LH) under conveyor long members respectable. See Figure 1.
4. Re-install Items #18 (Poly Blocks) on the hanger weldments.
5. Slide Item #1 (Berm Box Weldment) in to Items #18 (Poly Block).
6. Secure using Items #12, 40, 41 and 42 (Hardware).
7. Install Item #6 (Hanger Weldment) and Item #45 (Collar) on Item #5 (Slider Weldment).
8. Install sub-assembly from step 7 onto Item #1 using hardware Item #23,24,43.
9. Install Item #4 (Hanger Weldment) between Item #1 (Berm Box Weldment) and Item #6 (Hanger Weldment) using hardware Item #31,32,33.
10. Install Item #10 (Attachment Bar) using hardware Item #33 between Item #1 (Berm Box Weldment) and Item #2 (Box Weldment).



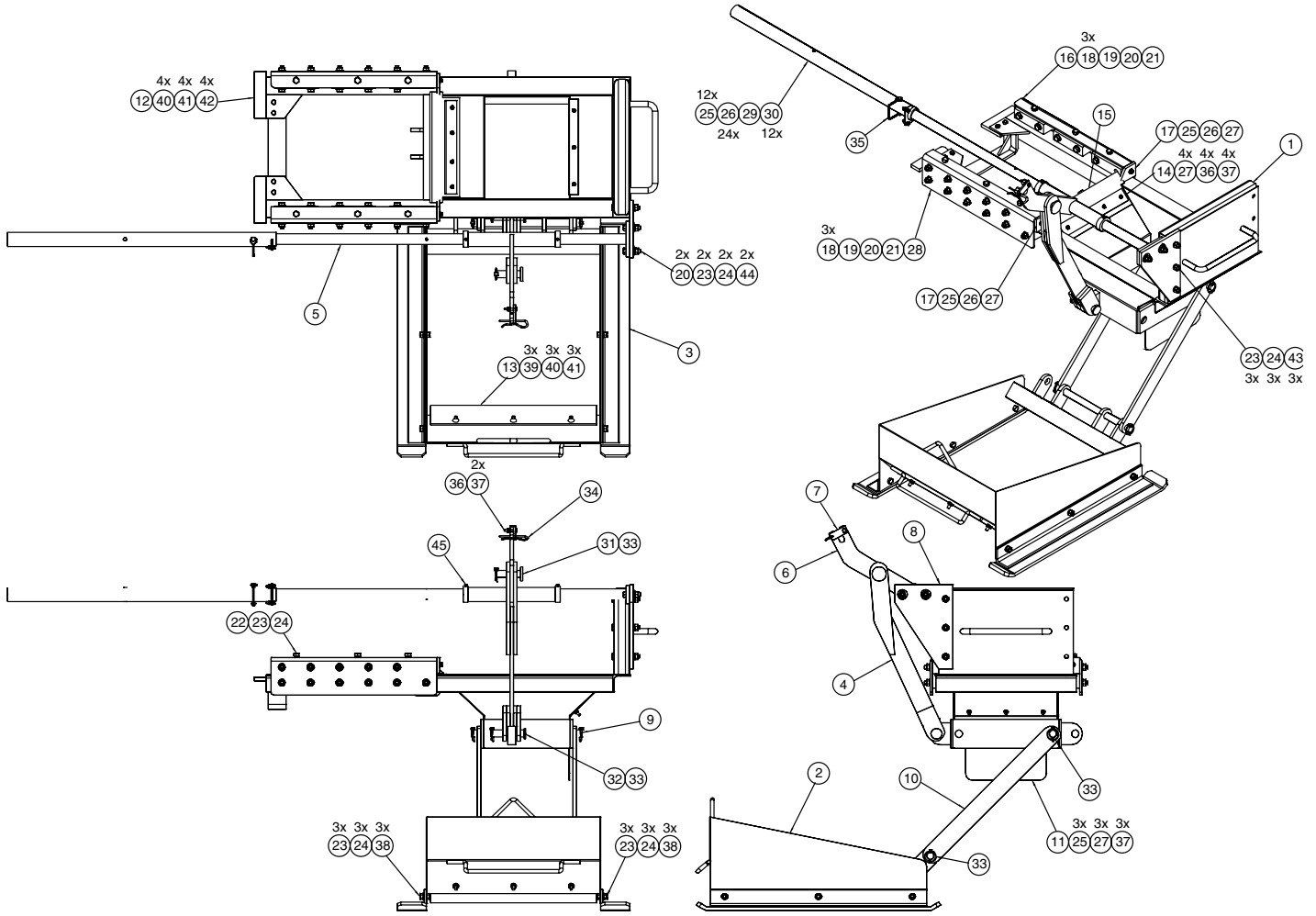
INSTALLATION INSTRUCTIONS

RDS MOUNTED BERM MASTER

1. Install Item #29 (Tube Weldment, Slide) between cross conveyor ribs as shown in Figure 1.
2. Remove the Items #18 (Poly Blocks) from the hanger weldments.
3. Install Items #28 (Hanger Weldment, RH), #16 (Hanger Weldment, LH) under conveyor long members respectable. See Figure 1.
4. Re-install Items #18 (Poly Blocks) on the hanger weldments.
5. Slide Item #1 (Berm Box Weldment) in to Items #18 (Poly Block).
6. Secure using Items #12, 40, 41 and 42 (Hardware).
7. Install Item #6 (Hanger Weldment) and Item #45 (Collar) on Item #5 (Slider Weldment).
8. Install sub-assembly from step 7 onto Item #1 using hardware Item #23,24,43.
9. Install Item #4 (Hanger Weldment) between Item #1 (Berm Box Weldment) and Item #6 (Hanger Weldment) using hardware Item #31,32,33.
10. Install Item #10 (Attachment Bar) using hardware Item #33 between Item #1 (Berm Box Weldment) and Item #2 (Box Weldment).



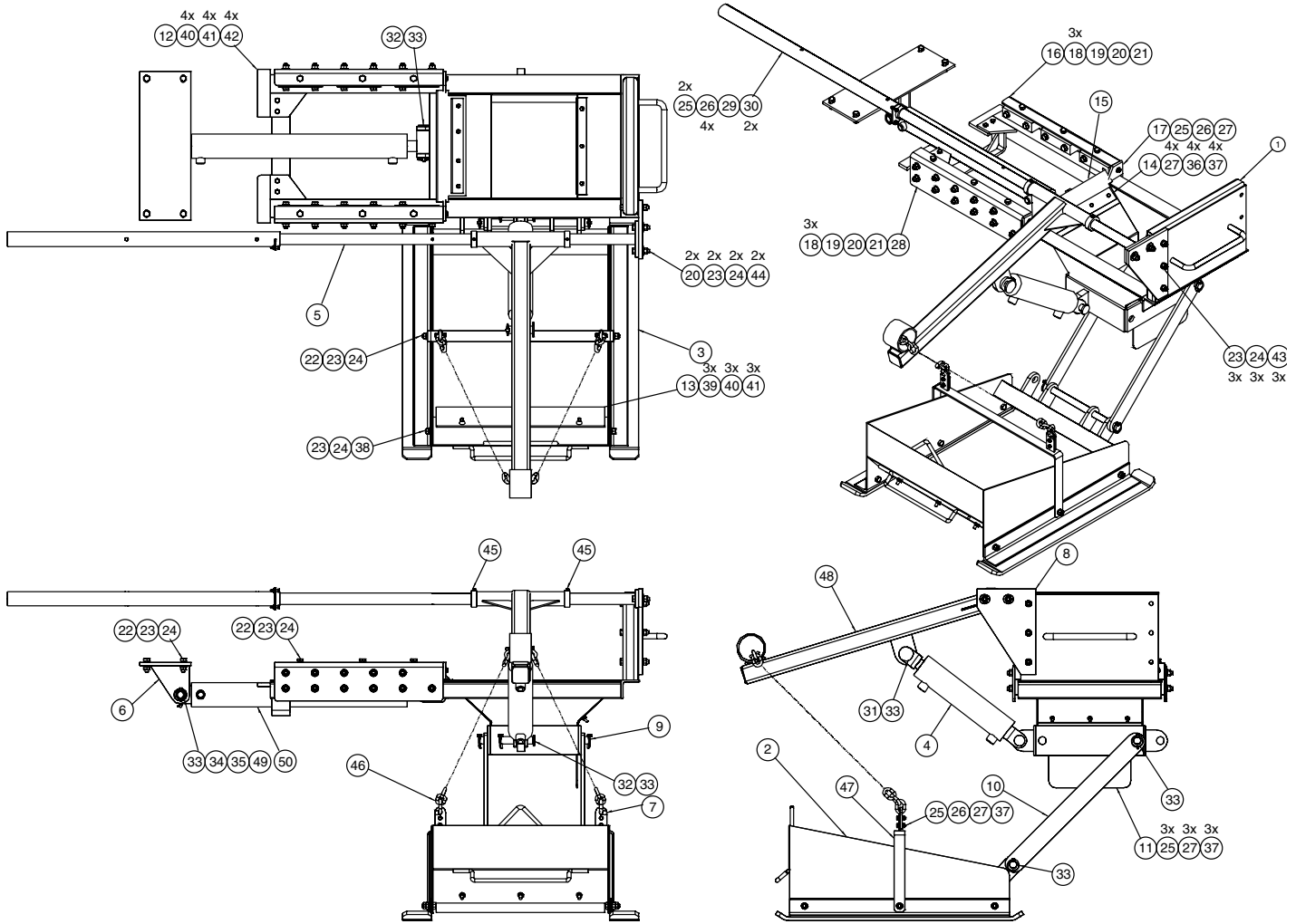
00095752 BERM MASTER, CC, MS10318 MANUAL



00095752 BERM MASTER, CC, MS10318, MANUAL

ITEM	QTY	PART NUMBER	DESCRIPTION
1	1	00095782	BERM BOX WLDMT,BERM MASTER
2	1	00095779	BOX WLDMT,LEVELING
3	2	00095772	SKID SHOE WLDMT,LEVELING ASSY
4	1	00095799	HANGER WLDMT,LEVELING BOX
5	1	00096223	SLIDER WLDMT,LEVELING ASSY
6	1	00096206	HANGER WLDMT,LEVELING BOX
7	1	00096219	TAB,LOCKING,HANGER
8	1	00096220	ATTACHMENT PL,SLIDER,HANGER
9	2	00095781	ATTACHMENT ROD,LEVELING BOX
10	2	00095780	ATTACHMENT BAR,LEVELING BOX
11	1	00095797	EXTENSION PANEL,DIVERTER
12	2	00095798	STOP PL,SLIDE
13	1	00096226	CUTTING EDGE,LEVELING ASSY
14	1	00096225	RETAINER STRIP,FLAP,RUBBER
15	1	00096224	DIVERTER FLAP,RUBBER,LEVELING
16	1	00095761	HANGER WLDMT,LH,LEVELING ASSY
17	2	00095760	WIPER,RUBBER,LEVELING ASSY
18	6	00095756	SLIDER BLOCK,LEVELING ASSY
19	22	05010698	BOLT .500-13 x 3.25 G8 HHCS ZC
20	58	05021005	WASHER .500 FLAT MIL-CARB SAE
21	22	05020847	NUT .500-13 GC TOPLOCK C&W
22	6	05010691	BOLT .500-13 x 1.50 G8 HHCS ZC
23	17	05021381	WASHER .500 LOCK HVY ZC
24	17	05020268	NUT .500-13 G8 HEX ZC
25	3	05010593	BOLT .250-20 x 1.00 G8 HHCS ZC
26	6	05021305	WASHER .250 FLAT ZC
27	12	05021363	WASHER .250 LOCK ZC
28	1	00095762	HANGER WLDMT,RH,LEVELING ASSY
29	1	00021130	TUBE WLDMT,SLIDE,LEVELING ASSY
30	2	05020899	NUT .250-20 GC TOPLOCK C&W
31	1	00018379	PIN 1.00 x 3.50,2.00 HEAD,
32	1	05022239	PIN 1.000 DIA x 4.266 GL
33	6	05022106	PIN .188 LYNCH
34	1	05022002	PIN #8 HAIR ZC
35	1	05022140	PIN, DOUBLE WIRE LYNCH .375
36	5	05010595	BOLT .250-20 x 1.50 G8 HHCS ZC
37	9	05020264	NUT .250-20 G8 HEX ZC
38	6	05010689	BOLT .500-13 x 1.00 G8 HHCS ZC
39	3	05013987	BOLT .375-16 x 1.25 G5 CRG ZC
40	7	05021365	WASHER .375 LOCK ZC
41	7	05020266	NUT .375-16 G8 HEX ZC
42	4	05010645	BOLT .375-16 x 1.50 G8 HHCS ZC
43	3	05010699	BOLT .500-13 x 3.50 G8 HHCS ZC
44	2	05010693	BOLT .500-13 x 2.00 G8 HHCS ZC
45	2	05052364	COLLAR,SHAFT,1.5"IDx2.25"ODx.75"W
46	1	05050095	TAG,SERIAL NUMBER,STANDARD
47	1	05090245	MANUAL,BERM MASTER
48	1	05050003	GREASE FITTING .125 NPT STR

00096227 BERM MASTER, CC, MS10318, HYDRAULIC

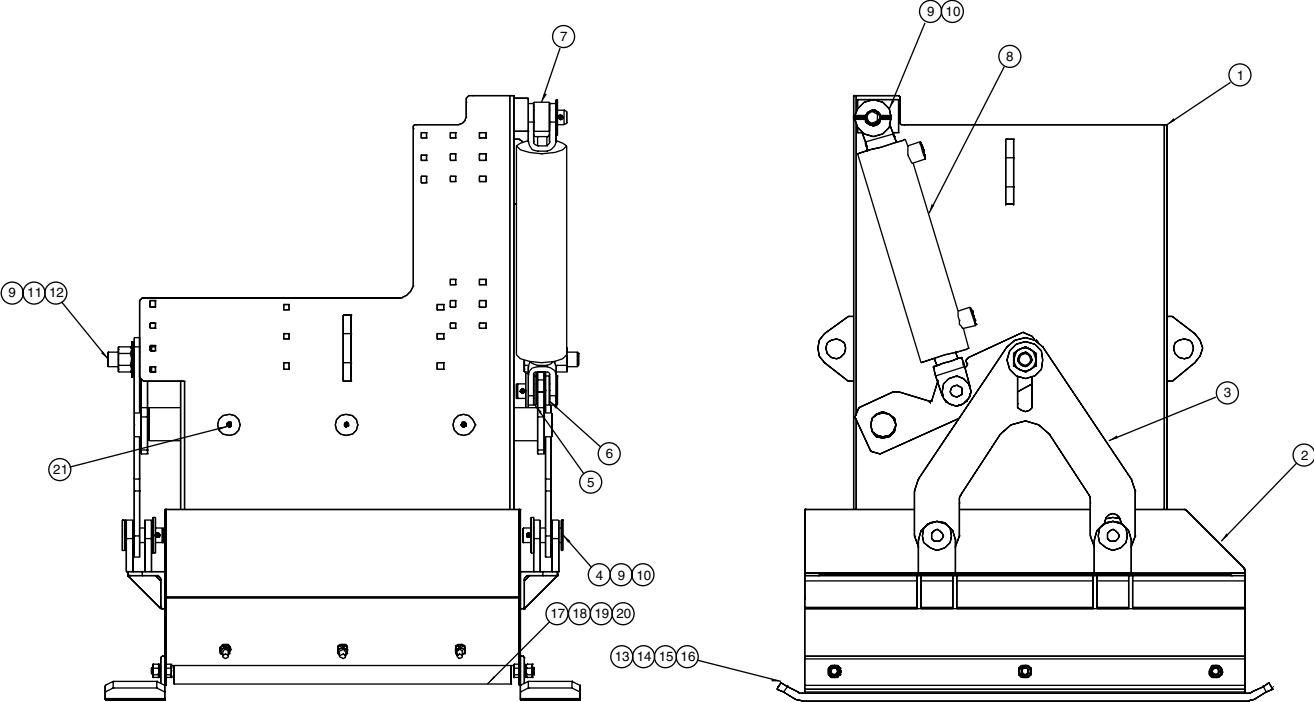


Item	Qty	Part Number	Description
1	1	00095782	BERM BOX WELDMENT
2	1	00095779	BOX WELDMENT
3	2	00095772	SKID SHOE WELDMENT
4	1	05002502	CYLINDER, 3 X 10, DA, JR WING HEEL <i>See Page xx</i>
5	1	00096223	SLIDER WELDMENT
6	1	00096238	MOUNTING BRACKET WELDMENT
7	1	00096229	ANCHOR COVER, CHAIN, LEFT
8	1	00096220	ATTACHMENT PLATE, SLIDER
9	2	00095781	ATTACHMENT ROD
10	2	00095780	ATTACHMENT BAR
11	1	00095797	EXTENSION PANEL, DIVERTER

00095752 BERM MASTER, CC, MS10318, MANUAL

Item	Qty	Part Number	Description
12	2	00095798	STOP PLATE, SLIDE
13	1	00096226	CUTTING EDGE
14	1	00096225	RETAINER STRIP, FLAP
15	1	00096224	DIVERTER FLAP, RUBBER
16	1	00095761	HANGER WELDMENT, LH
17	2	00095760	WIPER, RUBBER
18	6	00095756	SLIDER BLOCK
19	22	05010698	BOLT, .5-13 X 3.250, G8, HHCS, ZINC
20	58	05021005	WASHER, .5, MIL-CARB, ZINC
21	22	05020847	NUT, .5, TOP LOCK, C&W
22	6	05010691	BOLT, .5-13 X 1.5, G8, HHCS ZINC
23	17	05021381	WASHER, .250, FLAT, ZINC
24	17	05020268	NUT, .5-13, HEX, ZINC
25	3	05010593	BOLT, .250-20 X 1, G8, HHCS, ZINC
26	6	05021305	WASHER, .250, LOCK, ZINC
27	12	05021363	WASHER, .250, LOCK, ZINC
28	1	00095762	HANGER WLDMENT, RH
29	1	00021130	TUBE WELDMENT, SLIDE
30	2	05020899	NUT, .250-20, GC, TOP LOCK, C&W
31	1	00018379	PIN, 1 X 3.5, 2 HEAD, ZINC
32	1	05022001	PIN, 1 DAI X 4.266 GL
33	6	05022106	PIN, .188 LYNCH
34	1	05022040	PIN, 1 X 4.250 NO HEAD
35	1	05021314	WASHER, 1, FLAT, ZINC
36	5	05010595	BOLT, .250-20 X 1.50, G8, HHCS, ZINC
37	9	05020264	NUT, .250-20, HEX, ZINC
38	6	05010689	BOLT, .5-13 X 1, G8, HHCS, ZINC
39	3	05013987	BOLT, .375-16 X 1.250, G5, CARRIAGE, ZINC
40	7	05021365	WASHER, .375, LOCK, ZINC
41	7	05020266	NUT, .375-16, G8, HEX, ZINC
42	4	05010645	BOLT, .375-16 X 1.5, G8, HHCS, ZINC
43	3	05010699	BOLT, .5-13 X 3.5, G8, HHCS, ZINC
44	2	05010693	BOLT, .5-13 X 2.0, G8, HHCS, ZINC
45	2	05052364	COLLAR, 1.50 ID X 2.250 OD X .750 WIDE
46	1	00068952	CHAIN, .375 X 120
47	1	00096231	LIFT BAR WELDMENT
48	1	00096234	LIFT ARM WELDMENT
49	1	05022026	PIN, .250 X 2, ROLL, ZINC
50	1	05002755	CYLINDER, 3 X 24 DA, 2 ROD <i>See Page xx</i>
51	1	05090245	MANUAL, BERM MASTER
52	1	05050095	TAG, SERIAL NUMBER

00096241 BERM MASTER, CC, RDS, HYDRAULIC



00096241 BERM MASTER, CC, RDS, HYD

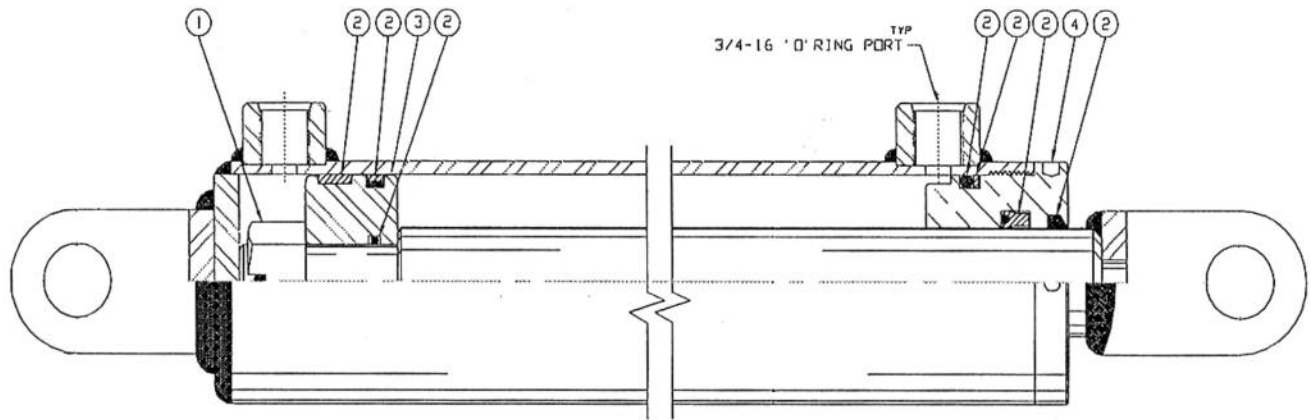
Item	Qty	Part Number	Description
1	1	00096252	CHUTE WELDMENT
2	1	00096254	BOX WELDMENT
3	2	00096253	LIFT PLATE
4	5	00060805	PIN, 1 DIA X 2.125 GRIP
5	1	00096261	SPACER TUBE, CYLINDER, LOWER
6	1	050096260	SPACER TUBE, CYLINDER, LOWER
7	1	00096259	SPACER TUBE, CYLINDER, TOP
8	1	00096257	CYLINDER, 3 X 5 DA, BERM MASTER
9	10	05021314	WASHER, 1, FLAT, ZINC
10	6	05022188	PIN, .250 X 2.56 ROLL, ZINC
11	2	05010814	BOLT, 1-8, G8, HHCS, ZINC
12	2	05020834	NUT, 1-8, GC, TOP LOCK, C&W
13	2	00095772	SKID SHOE WELDMENT
14	6	05021381	WASHER, .5, LOCK, ZINC
15	6	05020268	NUT, .5-13, HEX, ZINC
16	6	05010689	BOLT, .5-13 X 1, G8, HHCS, ZINC
17	1	00096226	CUTTING EDGE
18	3	05013987	BOLT, .375-16 X 1.250, G5, CARRIAGE, ZINC
19	3	05021365	WASHER, .375, LOCK, ZINC
20	3	05020266	NUT, .375-16, G8, HEX, ZINC
21	3	05050288	GREASE ZERK, .250-28, STRAIGHT THREADED
22	1	05090245	MANUAL, BERM MASTER
23	1	05050095	TAG, SERIAL NUMBER, STD

OPTIONAL: 00096364 VALVE KIT, HYD, BERM MASTER, REVERSE AND STOP

Item	Qty	Part Number	Description
1	1	05043008	VALVE, HYD, 2-4 WAYS, LS
2	1	05038235	HOSE KIT, REAR CROSS CONVEYOR
3	1	05041733	CONTROL/HARNESS KIT
4	2	05016136	BOLT, .313-18 X .750, HHCS, SST
5	2	05021404	WASHER, .313, FLAT, SST
6	2	05021407	WASHER, .313, LOCK, SST

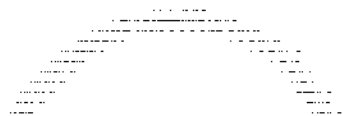
Cylinder, 3 X 10, D.A. (¾ - 16 O-Ring Ports)
Part Number 05002502 (New Style)

ITEM	QTY	PART NUMBER	DESCRIPTION
1	1	05002854	SLOTTED NUT
2	1	05002851	SEAL KIT (Includes: Wear Ring, PSP Seal, O-Rings, Wiper Ring)
3	1	05002852	PISTON
4	1	05002873	GLAND NUT



Part Number 00096257

ITEM	QTY	PART NUMBER	DESCRIPTION
1	1	05002502	CYLINDER, 3 X 5, DA (SEE ABOVE)
2	1	00096258	SPACER TUBE, CYLINDER



05002755 CYLINDER, 3 X 24, DA, WING TOE, TRIM-LINE POST

Item	Qty	Part Number	Description
1	1	05002778	Case Weldment
2	1	05002695	Head
3	1	05002672	Piston
4	1	05001001	Lock Nut
5	1	05002779	Rod Weldment
6	2	05002559	Plug, Plastic
7	1	05002780	Seal Kit

HOW TO ORDER PARTS

To order or inquire about replacement parts, please contact the distributor or store that the product was purchased through. To speed the information flow, please have the follow information ready:

- Model Number
- Serial Number
- Part Number and/or description as per the parts manual
- Quantity needed

For further information about **Monroe Truck Equipment** replacement parts, please call 800-880-0109 and ask for **Snow & Ice Parts Sales**.

RETURN POLICY

Merchandise returned to **Monroe Truck Equipment** must have a Warranty Service Request (WSR) form filled out completely and signed by authorized personnel. To get your WSR form, call 800-880-0109. For whole goods, ask for **Snow & Ice Sales**. For replacement parts, ask for **Snow & Ice Parts Sales**. All returned items are subject to a 15% restocking fee and must be sent freight prepaid!

MONROE TRUCK EQUIPMENT, INC. WARRANTY SNOW & ICE CONTROL PRODUCTS

Monroe Truck Equipment, Inc. warrants to the original purchaser, that if any part of the product proves to be defective in workmanship or material within **ONE YEAR** of the original installation, and is returned to us within 30 days of the discovered defect, we will (at our option) repair or replace the defective part. This warranty does not apply to damage resulting from misuse, neglect, accident, improper installation, normal wear items or lack of maintenance. This warranty is exclusive and supersedes all other warranties, whether expressed or implied. **Monroe Truck Equipment, Inc.** neither assumes, nor authorizes anyone to assume for it, any other obligation or liability in connection with this warranty and will not be liable for consequential damages.

All engines, pumps, motors, cylinders and valves are warranted by their manufacturer and not by **Monroe Truck Equipment, Inc.**. The manufacturer's warranty will apply to these parts. Electrical and hydraulic components are not to be disassembled without the express written permission of Monroe Truck Equipment. Use of replacement parts other than original equipment voids this warranty.

All defective parts returned must be accompanied by the model number, serial number, date installed, date of defect, description of defect, and the name of the distributor from whom it was purchased. All warranty claims must have prior written approval from **Monroe Truck Equipment, Inc.**

Please return the warranty registration card that accompanies this manual to confirm receipt of this parts catalog and acknowledge the information contained within. Failure to return the attached card may result in a voided warranty.



1051 West 7th Street
 Monroe, WI 53566
 608-328-8127 ~ Fax: 608-328-4278

Warranty Policy

Uninstalled Parts and Equipment Provided by Monroe Truck Equipment

Monroe Truck Equipment will provide the following limited warranty for a period of one year to the original purchaser of all uninstalled goods provided by Monroe Truck Equipment:

LIMITED WARRANTY: All goods provided by Monroe Truck Equipment (MTE) will be free from defects in material and workmanship for a period of one year from the date of purchase by the original purchaser. This limited warranty shall be the sole and exclusive remedy for any such product found to be defective. This limited warranty supercedes all previous warranties and is exclusive and in lieu of all other warranties, whether expressed or implied.

This limited warranty applies only to parts or accessories manufactured by MTE and/or provided by same. Except with respect to title, this limited warranty does not pertain to parts or accessories not manufactured and/or provided by MTE, regardless of whether such parts or accessories were selected and/or recommended by MTE. MTE will, as a service to the buyer, pass on any warranties received from the original manufacturer of MTE provided parts and/or accessories.

MTE will not under any circumstances be liable for any incidental or consequential damages whether in tort, contract, or otherwise, for any bodily injury, death, property damage, loss of use, or loss of income resulting from or in any way arising out of any goods provided by MTE, or their sale, use, or manufacture.

Any warranty claim deemed to be arising from the result of misuse, abuse, neglect, accident, improper installation, lack of maintenance, act of war (whether declared or otherwise), or act of God will be denied. Any repair or modification by the buyer or any third party, without the prior written consent of MTE, will void any possible warranty compensation. Any damage deemed to be the result of abnormal operation will not be compensated by this warranty.

Normal or special maintenance items such as fuels, fluids, tires, belts, hoses, filters, air cleaners, light bulbs, and any other items subject to normal wear and tear that are supplied in connection with goods provided by MTE are not allowed under this warranty.

All engines, pumps, cylinders, valves, and motors are warranted by their manufacturer and not by Monroe Truck Equipment. The manufacturer's warranty will apply to these parts. Electrical and hydraulic components are not to be disassembled without the express written consent of MTE. Any disassembly of MTE provided components without prior authorization will void the applicable warranty.

Monroe Truck Equipment shall be the sole and final determining authority as it applies to the administration of this warranty policy. Purchaser acknowledges receipt of Monroe Truck Equipment Warranty Policy and agrees to be bound by same.



GLOBAL SOLUTIONS
 ARMORED VEHICLES ~ SPORT TRUCK CONVERSIONS
 MUNICIPAL SNOW & ICE CONTROL ~ FIRE APPARATUS
 PICKUP TRUCK ACCESSORIES ~ TRUCK EQUIPMENT/MODIFICATIONS





1051 West 7th Street
Monroe, WI 53566
608-328-8127 ~ Fax: 608-328-4278

Any and all warranty claims must be forwarded to MTE within 10 days of defect discovery. A copy of the original Monroe Truck Equipment invoice as well as the manufacturer's model number, serial number, and date of installation must accompany all correspondence regarding said claims. MTE will, at their option, choose whether to repair or replace the defective part unless otherwise specified by the original manufacturer of said part.

Procedures for Warranty Claims Notification

For submission of any warranty claim please contact Monroe Truck Equipment – Warranty Department at 800-356-8134

The following documentation will be needed when you call for initial warranty authorization:

1. A copy of the original MTE invoice.
2. Make, Model, and VIN or Serial Number of the equipment involved.
3. Part number and serial number of the part in question.
4. A complete description of the problem.

The following must accompany any claim submitted to Monroe Truck Equipment:

1. Documented photographs of any physical damage.
2. Inspection notes by MTE personnel or MTE authorized 3rd party.
3. Authorization number issued by Monroe Truck Equipment – Warranty Department.

Defective parts must be returned to Monroe Truck Equipment (freight prepaid) within 30 days of issuance of Authorization Number.

Monroe Truck Equipment reserves the right to void any warranty for failure to comply with Monroe Truck Equipment Warranty Policy.

This policy is effective October 11, 2012

