



Extendible Junior Wing

PN: 00056784
Service and Parts Manual



MONROE TRUCK EQUIPMENT
1051 W. 7th Street
Monroe, WI 53566
Phone: 608-328-8127
Fax: 608-329-8488
Website: www.monroetruck.com

TABLE OF CONTENTS

SAFETY INSTRUCTIONS	Page 2
MAINTENANCE INSTRUCTIONS	Page 3
TORQUE CHART	Page 3
GENERAL INFORMATION	Page 4
REPLACEMENT PARTS	Page 6-19
HOW TO ORDER PARTS	Page 5
RETURN POLICY	Page 5
WARRANTY INFORMATION	Page 20

SAFETY INSTRUCTIONS

- Read all installation, safety and maintenance instructions completely before operating this equipment.
- Keep all personnel clear of moving parts while equipment is being operated.
- Do not operate a equipment in need of maintenance! Repair immediately!
- While operating this equipment, use common sense, use caution, be alert and be safety-conscious
- **Before installation of wing or maintenance to wing or truck, be sure to apply parking brake, chock the rear wheels and remove the key from the ignition switch.**
- **Always use wing restraint chain when wing is in stored position.**



! DANGER

AVOID HIGH-PRESSURE FLUIDS

Escaping fluid under pressure can penetrate the skin causing serious injury.

Avoid the hazard by relieving pressure before disconnecting hydraulic or other lines. Tighten all connections before applying pressure.

Search for leaks with a piece of cardboard. Protect hands and body from high pressure fluids.

If an accident occurs, see a doctor immediately. Any fluid injected into the skin must be surgically removed within a few hours or gangrene may result.

GENERAL INFORMATION

- Location descriptions are noted in direction of travel. (i.e. front, rear, left and right.)
- Delivery of replacement parts is subject to our sales delivery terms.
- Use only **Monroe Truck Equipment** O.E.M. replacement parts. Failure to do so will void warranty.
- **Monroe Truck Equipment** reserves the right to make revisions or alterations to this parts manual.
- Replacement parts listed in this manual reflect our most common wing items. If you do not find the parts you require, please call your distributor.
- Suspension spring modification and/or airbag may be required to carry additional weight.

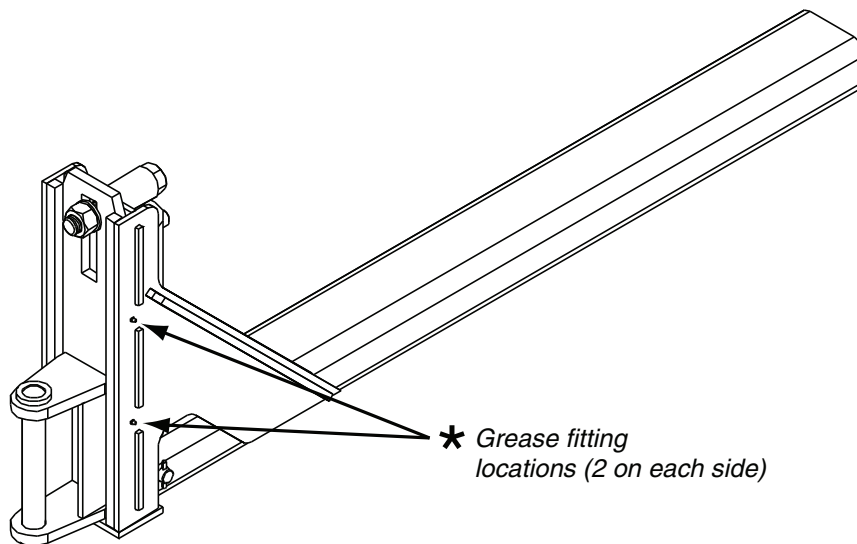
MAINTENANCE INSTRUCTIONS

In Season:

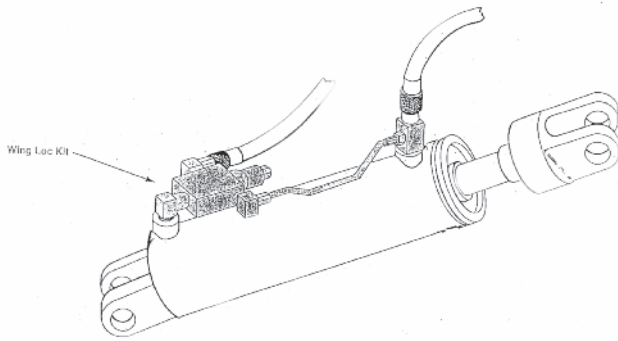
- Check for loose bolts and nuts daily, and re-torque before use. (Failure to inspect equipment on a daily basis may seriously affect safety and/or efficiency.)
- Lubricate all grease fittings (See below for locations) every ten hours of normal use and more frequently under heavy use.
- Check all hydraulic fittings for tightness on a regular basis.
- System pressure should NOT exceed 2000 PSI.
- Check cutting edge for wear. Do not let cutting edge wear closer than $\frac{1}{2}$ " to $\frac{3}{8}$ " from the bottom angle of the moldboard.
- Due to the nature of use and environment this equipment is operating in, damage and wear may occur at any time. Therefore, **Monroe Truck Equipment** recommends the end user establish and follow a daily inspection routine before using this equipment.

Off Season:

- Use care when disconnecting hydraulic lines to assure that no dirt or foreign objects enter the hydraulic system. Use caps to cover hydraulic hose fittings and insert plugs in hydraulic ports.
- Hydraulic cylinders should be fully retracted when stored during the off season to prevent damage or corrosion. The remaining exposed shaft surface should be coated with a thick grease to prevent corrosion, which must be removed before returning to regular service.
- Check mounting bolts for wear and/or damaged threads and replace before next season.
- Lubricate all pivot points and grease fittings (See below). Re-paint if necessary.

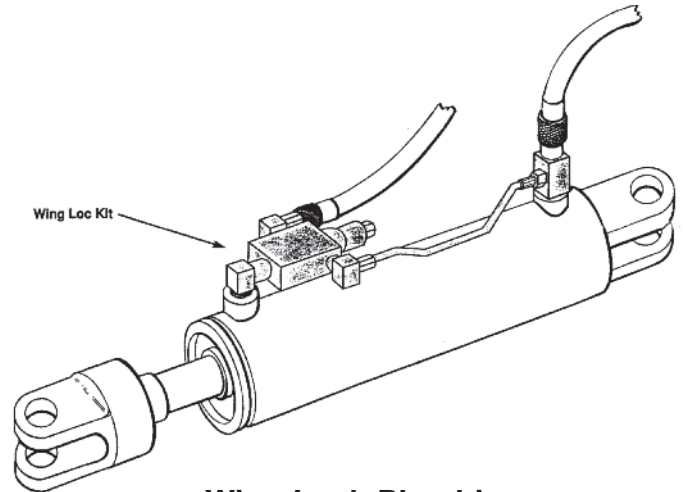


WING LOC



Wing Lock Plumbing

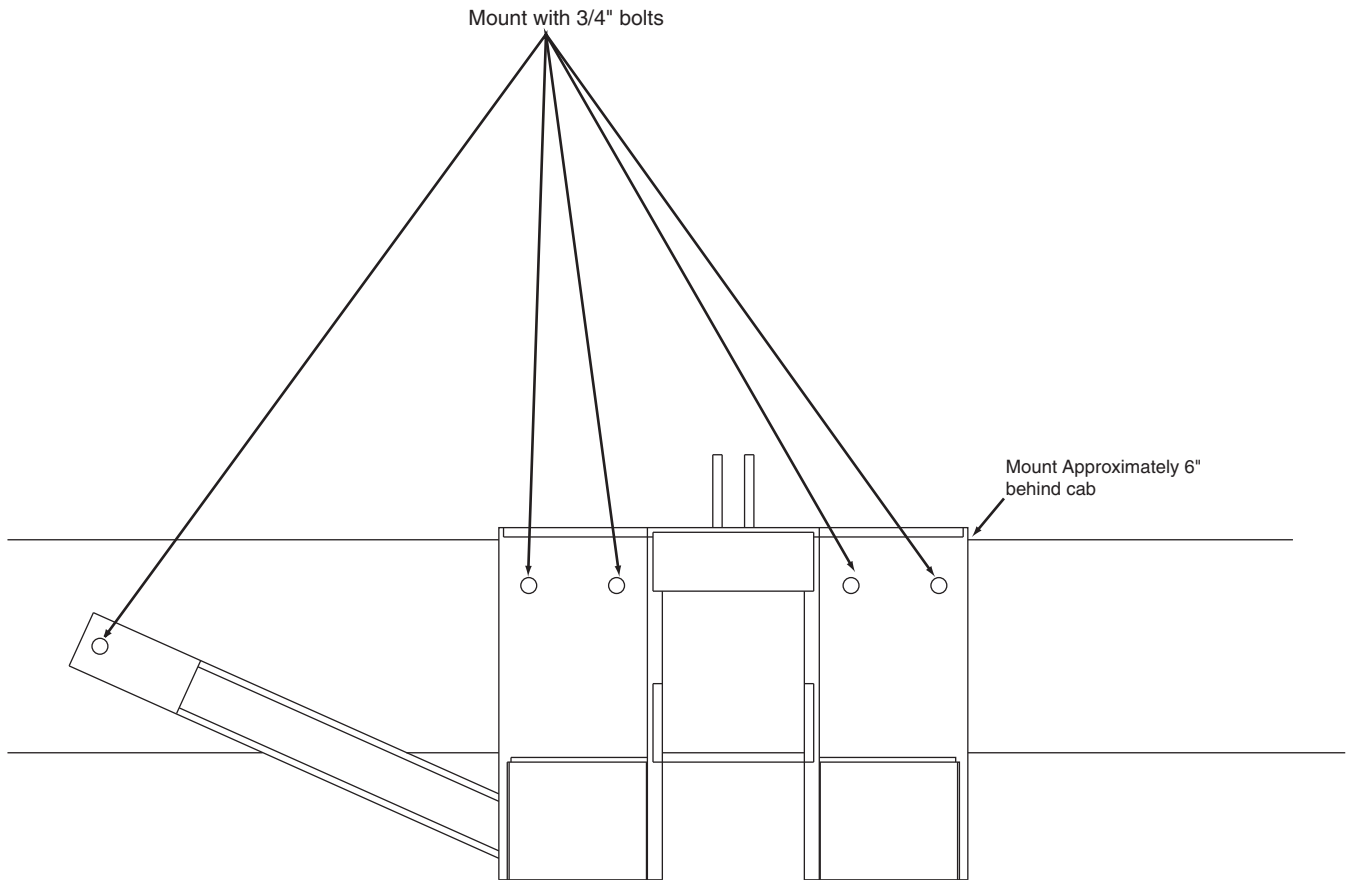
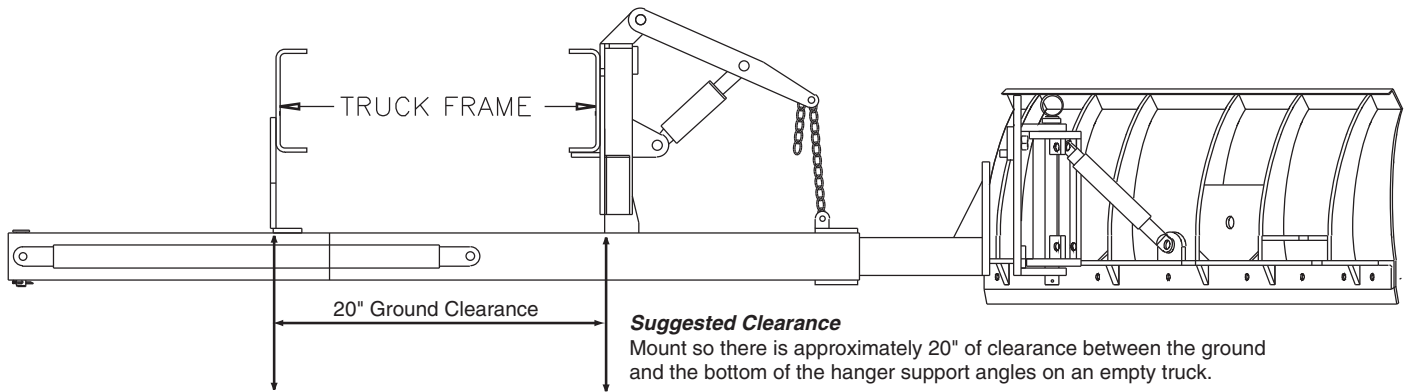
Install the lock valve at the base of the cylinder when you want the rod locked in the extended position.



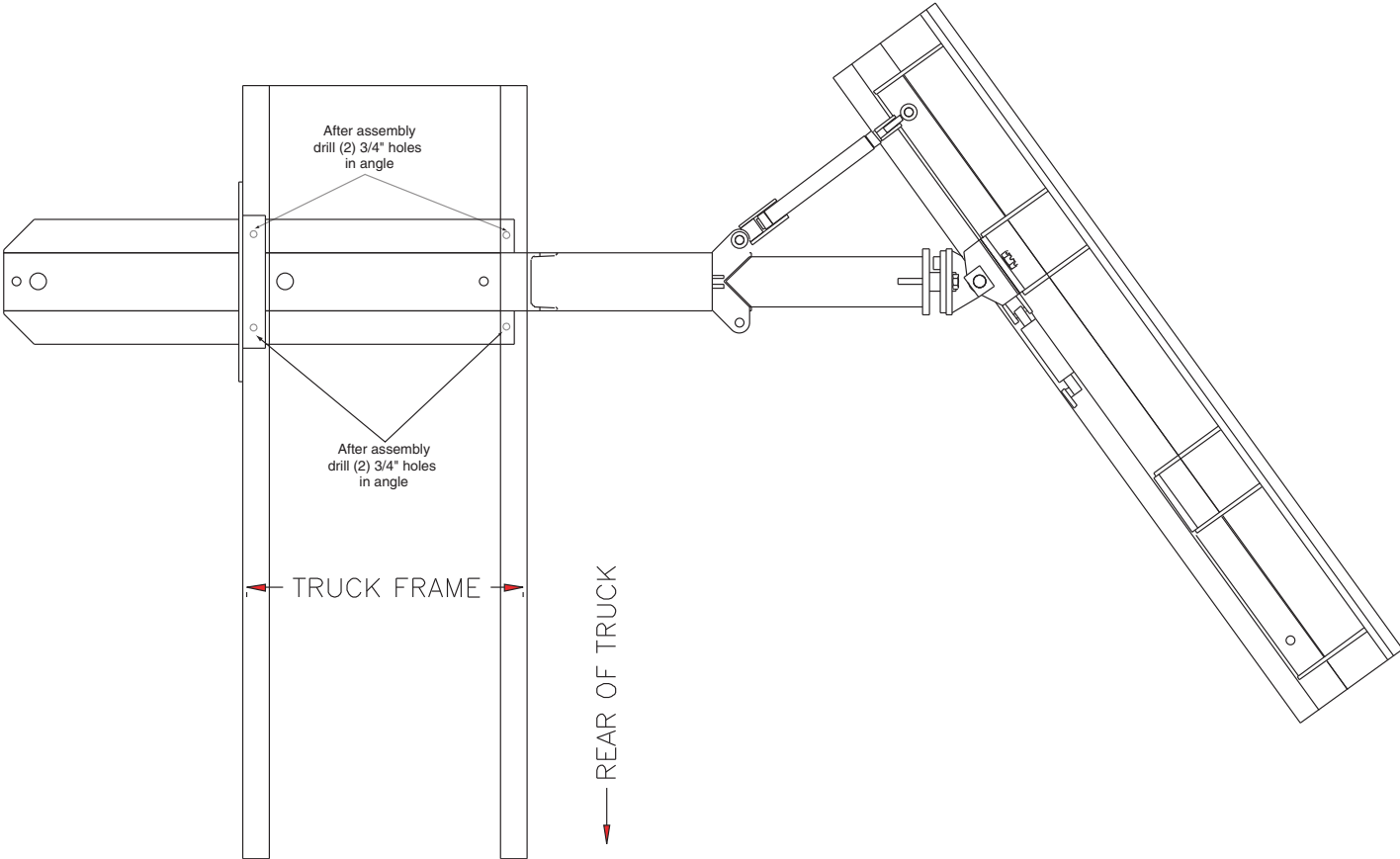
Wing Lock Plumbing

Install the lock valve on the rod side of the cylinder when you want the rod locked in the collapsed position.

INSTALLATION INSTRUCTIONS



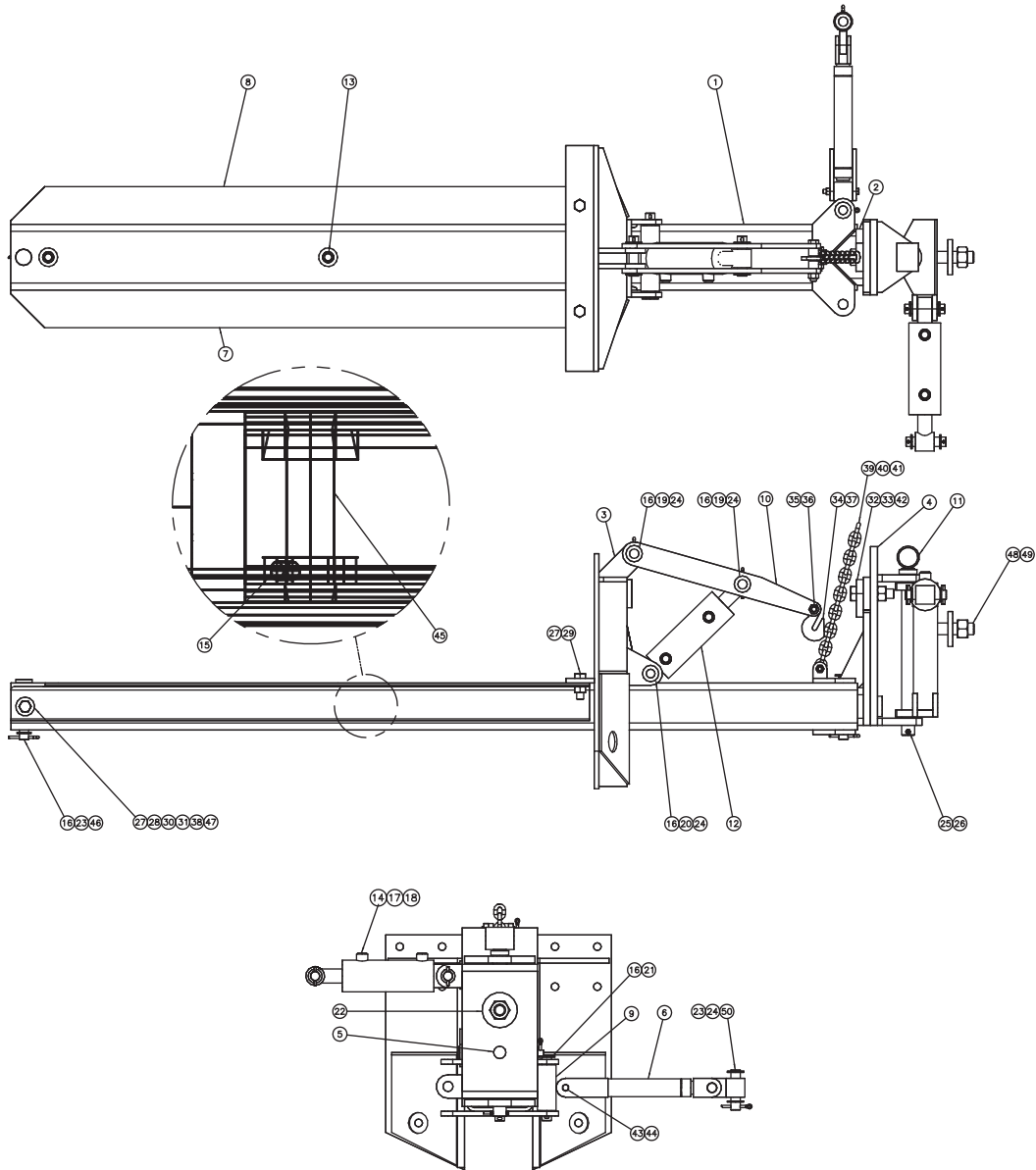
INSTALLATION INSTRUCTIONS



NOTES

00056784 WING, 8EXWMB, 10GA, STRAIGHT

Item	Qty	Part Number	Description
1	1	00040400	Wing Post Assembly, RHMM, Ext Jr <i>(See page 10)</i>
2	1	00038825	Moldboard Assembly <i>(See page 12)</i>
3	1	00040449	Support Mounting, Frame
4	1	00040446	Bracket Weldment, Mounting
5	1	00049750	Cutting Edge Kit, 8', 5/8 x 8, TPCS <i>(See page 13)</i>
7	1	00059600	Mounting Hardware Kit <i>(See page 14)</i>

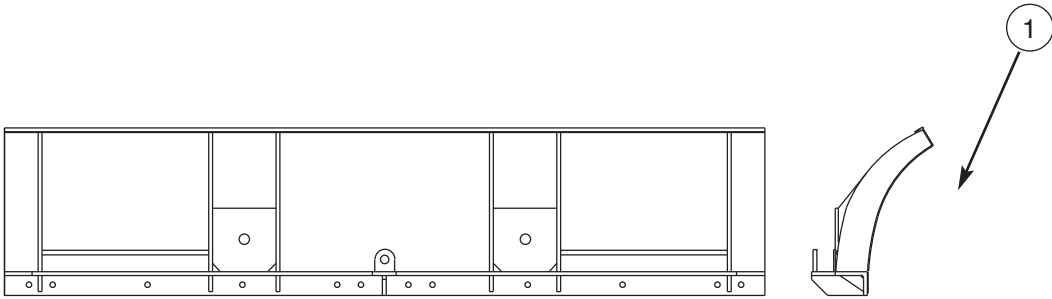


00040400 WING POST ASSEMBLY

Item	Qty	Part Number	Description
1	1	00040419	Outer Post Weldment
2	1	00040423	Inner Post Weldment
3	1	00040432	Frame Mounting Bracket, Inner
4	1	00040412	Moldboard Mounting Bracket, Inner
5	1	00040408	Moldboard Mounting Bracket, Outer
6	1	00040452	Pusharm Weldment
7	1	00040444	Frame Support, RH
8	1	00040445	Frame Support, LH
9	1	00040456	Pusharm Connector
10	2	00040438	Lift Arm

(continued from previous page)

Item	Qty	Part Number	Description
11	1	00040415	Pin Weldment
12	1	05002630	Cylinder, 3x5, DA, Toe Cap T (See page 15)
13	1	05002633	Cylinder, 3x27, DA, Slide Cap T (See page 16)
14	1	05002631	Cylinder, 3x5 (See page 17)
15	1	05015609	Set Screw, 3/8-16 UNC x 1/2, SSS
16	5	05022006	Pin, 1/4 x 2, Cotter, Zinc
17	6	05022026	Pin, 1/4 x 2, Roll, Zinc
18	2	05022040	Cylinder Mounting Pin
19	2	00040463	Pin Weldment
20	1	00040466	Pin Weldment
21	1	00040465	Pin Weldment
22	2	00040503	Ring
23	6	05021202	Bushing, 1x10
24	4	05021314	Washer, 1, Flat, Zinc
25	1	05010599	Bolt, 1/4-20 x 2 1/2, G8, HHCS, Zinc
26	1	05020536	Nut, 1/4-20, G8, Hex, Zinc
27	4	05010765	Bolt, 3/4-10 x 2 1/4, G8, HHCS, Zinc
28	2	05020271	Nut, 3/4-10, G8, Hex, Zinc
29	2	05020849	Nut, 3/4-10, GC, Top Lock, C&W
30	2	05021384	Washer, 3/4, Lock, Zinc
31	2	05021312	Washer, 3/4, Flat, Zinc
32	1	05010818	Bolt, 1-8 x 4, G8, HHCS, Zinc
33	1	05020834	Nut, 1-8, GC, Top Lock, C&W
34	1	05050094	Eye Grab Hook
35	1	05010747	Bolt, 5/8-11 x 4, G8, HHCS, Zinc
36	1	05020837	Nut, 5/8-11, GC, Top Lock, C&W
37	2	00030118	Pipe, 3/4 SCHED 80 x .8125
38	2	00030119	Pivot Bushing
39	1	05010694	Bolt, 1/2-13 x 2 1/4, G8, HHCS, Zinc
40	1	05020847	Nut, 1/2-13, GC, Top Lock, C&W
41	1	00030114	Chain, 3/8 x 16 Links
42	1	00387703	Radius Attachment Ear
43	1	05010653	Bolt, 3/8-16 x 3 1/2, G8, HHCS, Zinc
44	1	05020898	Nut, 3/8-16, GC, Top Lock, C&W
45	1	00030120	Round, 1 DIA x 3 1/4
46	1	05022076	Pin, 1x6, Zinc
48	1	05010853	Bolt, 1 1/4-7 x 4 1/2, G8, HHCS, Zinc
49	1	05020835	Nut, 1 1/4-7, GC, Top Lock, C&W
50	1	00040461	Pin Weldment



00038525 MOLDBOARD ASSEMBLY, WING, 8EXWMB, 10GA, STRAIGHT

Item	Qty	Part Number	Description
1	1	00040401	Moldboard Weldment
2	1	00055962	Decal Kit <i>(See page 14)</i>

00049750 CUTTING EDGE KIT, 8', 5/8 X 8, TPCS

Item	Qty	Part Number	Description
1	1	05031075	Cutting Edge, 5/8 x 8" x 8', TPCS
2	10	05014551	Bolt, 5/8-11 x 2 1/2, G8, DHCS, Plain
3	10	05021383	Washer, 5/8, Lock, Zinc
4	10	05020270	Nut, 5/8-11, G8, Hex, Zinc

00059600 MOUNTING HARDWARE KIT

Item	Qty	Part Number	Description
1	10	05010766	Bolt, 3/4-10 x 2 1/2, G8, HHCS, Zinc
2	10	05020849	Nut, 3/4-10, GC, Top Lock, C&W

00055962 DECAL KIT



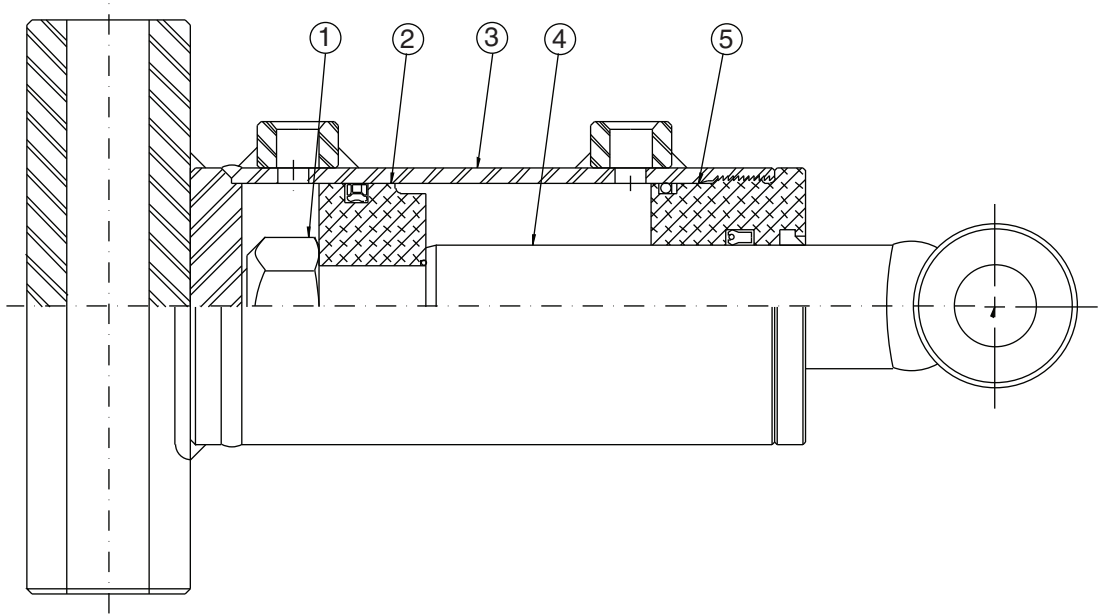
05051507 (Qty. 1)



05050681 (Qty. 1)

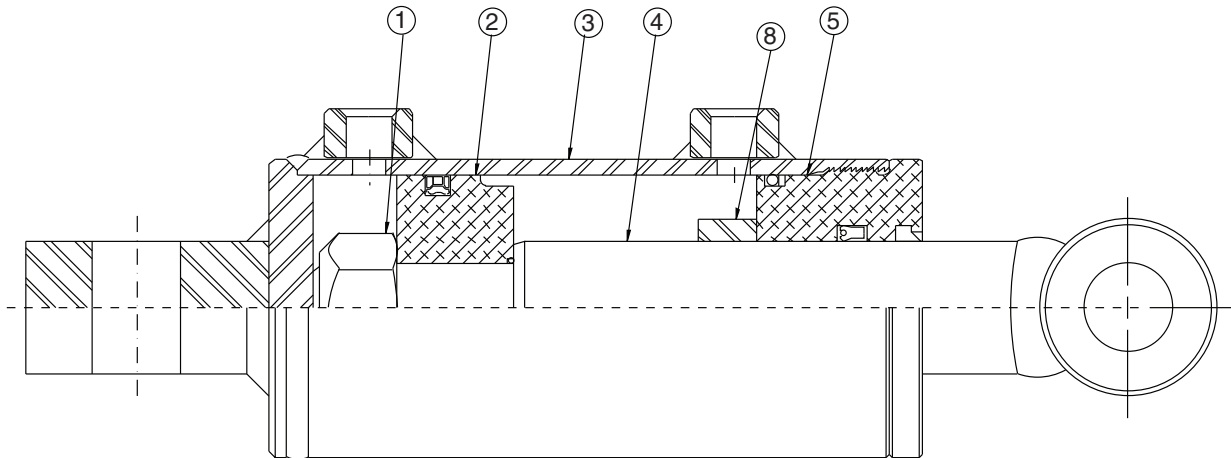
05002630 CYLINDER, 3 X 5, DA, CAP "T" SEAL

BOBALEE	ITEM	QTY	PART #	DESCRIPTION
	1	1	05001001	LOCK NUT
	2	1	05002672	PISTON CAP SEAL
	3	1	05002752	CASE WELDMENT
	4	1	05002062	ROD WELDMENT
	5	1	05002753	HEAD
	6	2	05002659	PLUG (Not Shown)
	7	1	05002677	SEAL KIT (Not Shown)



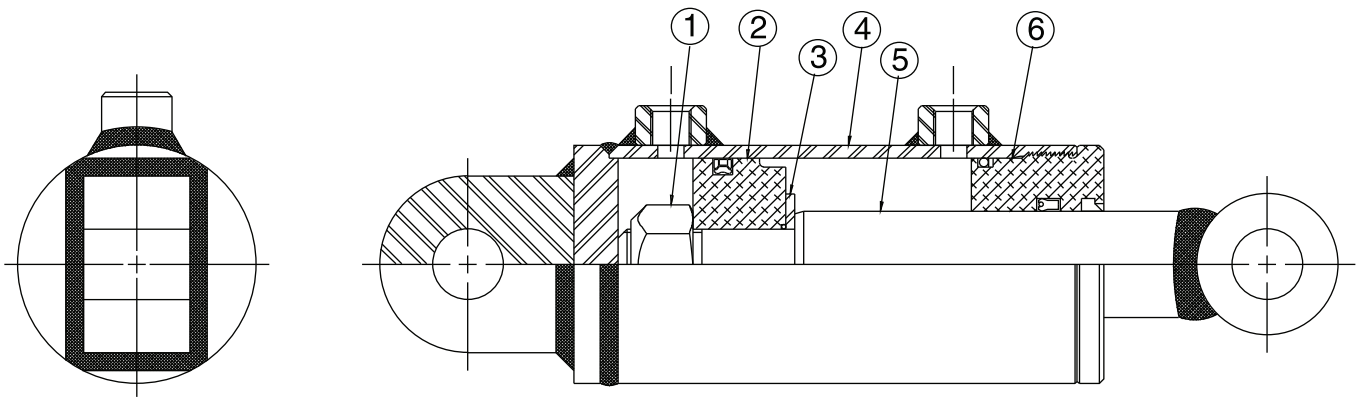
05002633 CYLINDER, 3 X 27, DA, CAP "T" SEAL

<u>BOBALEE</u>	<u>ITEM</u>	<u>QTY</u>	<u>PART #</u>	<u>DESCRIPTION</u>
	1	1	05001001	LOCK NUT
	2	1	05002672	PISTON CAP SEAL
	3	1	05002751	CASE WELDMENT
	4	1	05002072	ROD WELDMENT
	5	1	05002753	HEAD
	6	2	05002659	PLUG (Not Shown)
	7	1	05002677	SEAL KIT (Not Shown)
	8	1	05002073	SPACER



05002631 CYLINDER, 3X5

ITEM	QTY	PART NUMBER	DESCRIPTION
1	1	05001001	LOCK NUT
2	1	05002672	PISTON CAP SEAL
3	1	05002022	PISTON WASHER
4	1	05002890	CASE WELDMENT
5	1	05002891	ROD WELDMENT
6	1	05002892	HEAD THREAD
7	2	05002893	SAE PLUG
9	1	05002677	SEAL KIT



HOW TO ORDER PARTS

To order or inquire about replacement parts, please contact the **distributor** or **store** that the product was purchased through. To speed the information flow, please have the following information ready:

- Model Number
- Serial Number
- Part Number and/or description as per the parts manual
- Quantity needed

For further information about **Monroe Truck Equipment** replacement parts, please call 800-880-0109 and ask for **Snow & Ice Parts Sales**.

RETURN POLICY

Merchandise returned to **Monroe Truck Equipment** must have a Returned Goods Authorization (RGA) form filled out completely and signed by authorized personnel. To get your RGA form, call 800-880-0109. For whole goods, ask for **Snow & Ice Sales**. For replacement parts, ask for **Snow & Ice Parts Sales**. All returned items are subject to a 15% restocking fee and must be sent freight prepaid!

MONROE WARRANTY
SPREADER-SCRAPERS-SNOWPLOWS-HITCHES-WINGS

Monroe Truck Equipment, Inc. warrants to the original purchaser, that if any part of the product proves to be defective in workmanship or material within ONE YEAR of the original installation, and is returned to us within 30 days of the discovered defect, we will (at our option) repair or replace the defective part. This warranty does not apply to damage resulting from misuse, neglect, accident, improper installation, normal wear items or lack of maintenance. This warranty is exclusive and supersedes all other warranties, whether expressed or implied. **Monroe Truck Equipment** neither assumes, nor authorizes anyone to assume for it, any other obligation or liability in connection with this warranty and will not be liable for consequential damages.

All engines, pumps, motors, cylinders and valves are warranted by their manufacturer and not by **Monroe Truck Equipment**. The manufacturer's warranty will apply to these parts. Electrical and hydraulic components are not to be disassembled without the express written permission of **Monroe Truck Equipment**. Use of replacement parts other than original equipment voids this warranty.

All defective parts returned must be accompanied by the model number, serial number, date installed, date of defect, description of defect, and the name of the distributor from whom it was purchased. All warranty claims must have prior written approval from **Monroe Truck Equipment**.

WARRANTY REGISTRATION

MODEL # _____ DATE OF PURCHASE _____

SERIAL # _____ FROM _____

NAME: _____

ADDRESS: _____

CITY/STATE: _____ ZIP: _____

IMPORTANT!

Return of this warranty registration information confirms receipt of this parts catalog and acknowledges the information contained within. Please fill in the blanks, photocopy, and either fax or mail entire page to:

*Monroe Truck Equipment
1051 W. 7th Street
Monroe, WI 53566
Fax # 608-328-4278*

AUTHORIZED SIGNATURE _____