



Parts Manual
for
Heavy Duty Patrol Wing
Single Function



Monroe Snow & Ice Control
A Division of Monroe Truck Equipment
1051 W. 7th Street
Monroe, WI 53566
Phone: 608-328-8127
Fax: 608-329-8488

05050757
2/20/2004

TABLE OF CONTENTS

SAFETY INSTRUCTIONS	Page 2
MAINTENANCE INSTRUCTIONS	Page 3
INSTALLATION INSTRUCTIONS	Page 4-13
TORQUE CHART	Page 15
GENERAL INFORMATION	Page 15
REPLACEMENT PARTS	Page 16-53
HOW TO ORDER PARTS	Page 54
RETURN POLICY	Page 54
WARRANTY INFORMATION	Page 55

SAFETY INSTRUCTIONS

- Read all installation, safety and maintenance instructions completely before operating this equipment
- Keep all personnel clear of moving parts while equipment is being operated.
- Do not operate equipment in need of maintenance! Repair immediately!
- While operating this equipment, use common sense, use caution, be alert and be safety-conscious.
- Always use wing restraint chain when wing is in stored position.
- **Before installation of wing, or maintenance to wing or truck, be sure to apply the parking brake, chock the rear wheels and remove the key from the ignition switch.**

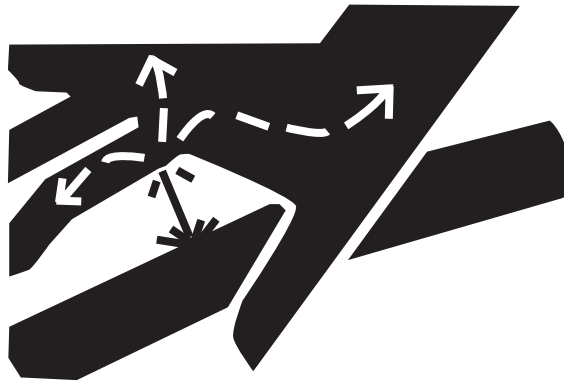
AVOID HIGH-PRESSURE FLUIDS

Escaping fluid under pressure can penetrate the skin causing serious injury.

Avoid the hazard by relieving pressure before disconnecting hydraulic or other lines. Tighten all connections before applying pressure.

Search for leaks with a piece of cardboard. Protect hands and body from high pressure fluids.

If an accident occurs, see a doctor immediately. Any fluid injected into the skin must be surgically removed within a few hours or gangrene may result.



MAINTENANCE INSTRUCTIONS

In Season:

- Check for loose bolts and nuts daily, and re-torque before use. (Failure to inspect equipment on a daily basis may seriously affect safety and/or efficiency.)
- Lubricate all grease fittings every ten hours of normal use and more frequently under heavy use.
- A cross over relief valve (1800 PSI) **MUST** be plumbed into the reversing circuit.
- Check all hydraulic fittings for tightness on a regular basis.
- System pressure should **NOT** exceed 2000 PSI.
- Check cutting edge for wear. Do not let cutting edge wear closer than ½" to ⅜" from the bottom angle of the moldboard.
- Due to the nature of use and environment this plow is operating in, damage and wear may occur at any time. Therefore, **Monroe Truck Equipment** recommends the end user establish and follow a daily inspection routine before using this plow.
- Check for frayed/worn cables on a daily basis and replace as necessary.

Off Season:

- Use care when disconnecting hydraulic lines to assure that no dirt or foreign objects enter the hydraulic system. Use caps to cover hydraulic hose fittings and insert plugs in hydraulic ports.
- Hydraulic cylinders should be fully retracted when stored during the off season to prevent damage or corrosion. The remaining exposed shaft surface should be coated with a thick grease to prevent corrosion, which must be removed before returning to regular service.
- Check mounting bolts for wear and/or damaged threads and replace before next season.

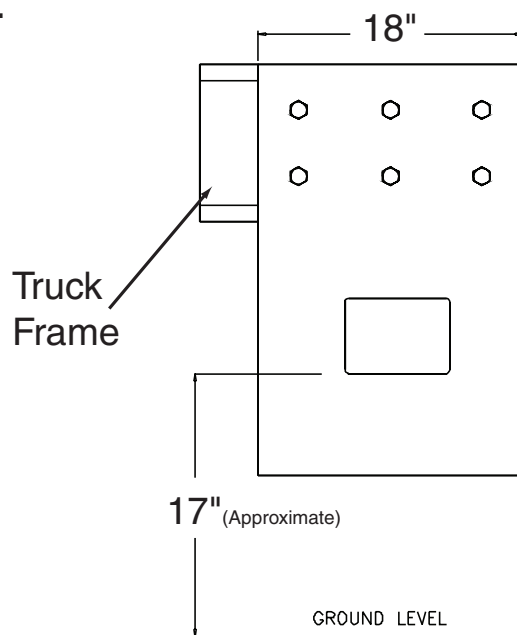
INSTALLATION INSTRUCTIONS

These mounting instructions are intended as a guide to aid you in the installation of your **Monroe Heavy Duty Patrol Wing**. All dimensions noted in the instructions are approximate and may vary due to: make and model of chassis, tire size, type of suspension, spring deflection, customer preference, and interference caused by immovable attachments. Ideally, the wing should be mounted to get full usage of the cutting edge without wearing into the moldboard. **Monroe Truck Equipment** assumes no responsibility for improper installation, unless installed at a **Monroe Truck Equipment** location. Mounting location should be discussed by the end-user and the installer prior to installation in order to achieve the best possible installation.

SIDE PLATE INSTALLATION

1. Clamp side plates to the truck frame as shown. Keep the plates square and level to the truck frame not the ground.
2. Drill (6) $2\frac{1}{32}$ " diameter holes through each side plate and the truck frame. Apply paint or rust inhibitor to drilled holes.
3. Fasten each side plate with $\frac{5}{8}$ " bolts/nuts and hardened washers. Tighten bolts to specifications. If there is any excess length in the truck frame, it can be trimmed with a cutting torch, if needed.

Figure A.



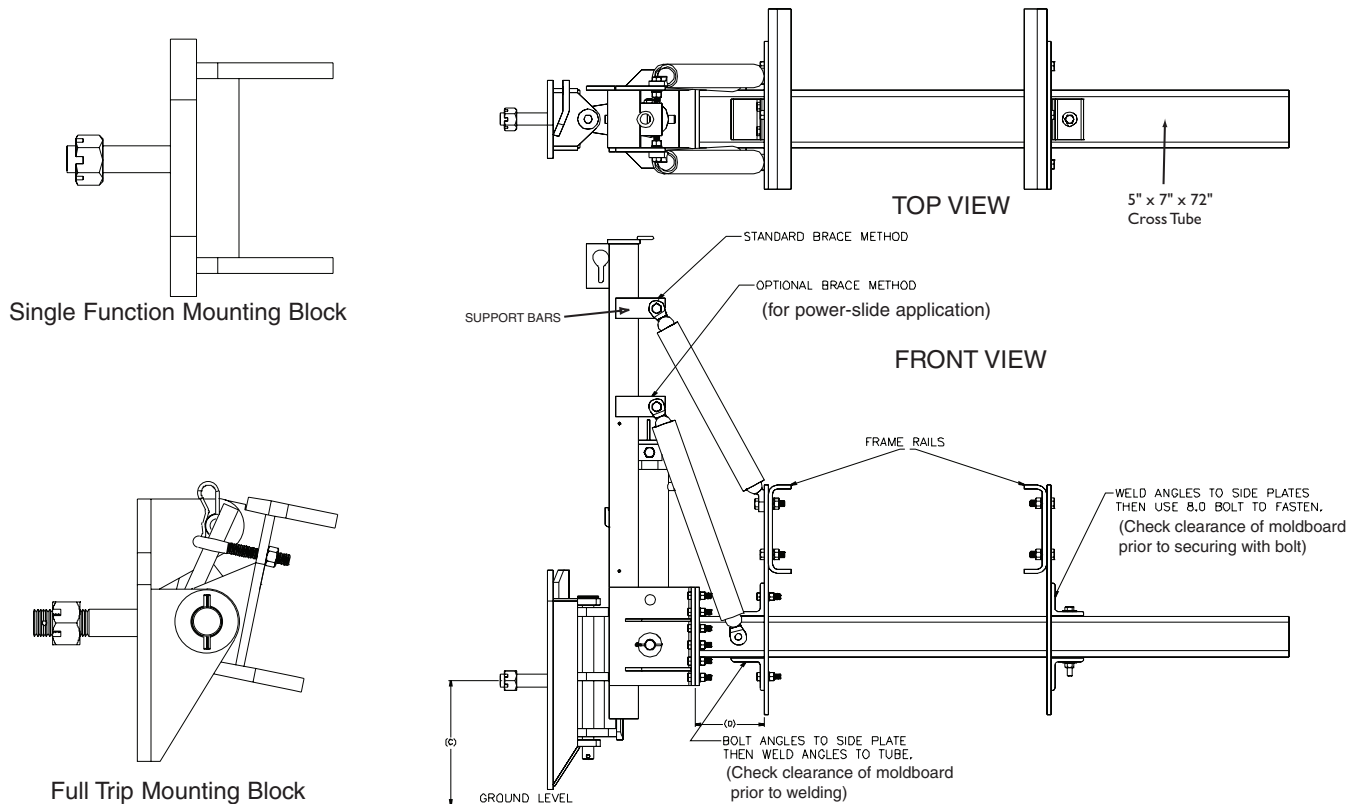
INSTALLATION INSTRUCTIONS

WING POST INSTALLATION

Note: Clamp equipment in place to insure proper fit before permanent insulation.

1. The lift cylinder on the wing post should be fully collapsed and installed in the lower hole location. Apply anti-seize lubricant to the pin that holds the cylinder in place.
2. Insert the wing mounting bolt ($1\frac{1}{2}$ " x $6\frac{1}{2}$ ") into the lower hole of the mounting block. Apply anti-seize lubricant to the mounting bolt.
3. Connect the mounting block assembly to the wing post slider using the $1\frac{1}{2}$ " x $19\frac{1}{2}$ " pin provided with the post assembly. Tighten the $\frac{1}{4}$ " bolt/lock nut to hold the pin in place.
4. Using an electric grinder, chamfer the edges on one end of the 5"x7"x72" cross tube. This chamfered end will be on the post side of the truck and will help to obtain a good weld to the mounting plate on the wing post assembly.
5. Measure the wing moldboard assembly from the bottom edge of the cutting edge mounting angle to the center of the pivot hole. This amount will be the distance from the ground to the center of the $1\frac{1}{2}$ " mounting bolt on the mounting block assembly. (Measurement C, below). This would be grade level. *Note: Check with user if wing moldboard should be installed, below grade, at grade or above grade. (Caution: Suspension Spring deflection may occur.)*
6. Lift the wing post to the correct height with a proper lifting device. Keep the wing post square and level to the truck, not the ground.
7. Tack weld the mounting plate to the cross tube. Double-check the measurement before welding. Gussets may be added to strengthen this connection. Remove the assembly and weld completely. *NOTE- Be sure the surfaces being welded are cleaned of paint, grease or dirt.*

Figure B. IMPORTANT - DO NOT ATTACH PIPE BRACES AT THIS POINT.



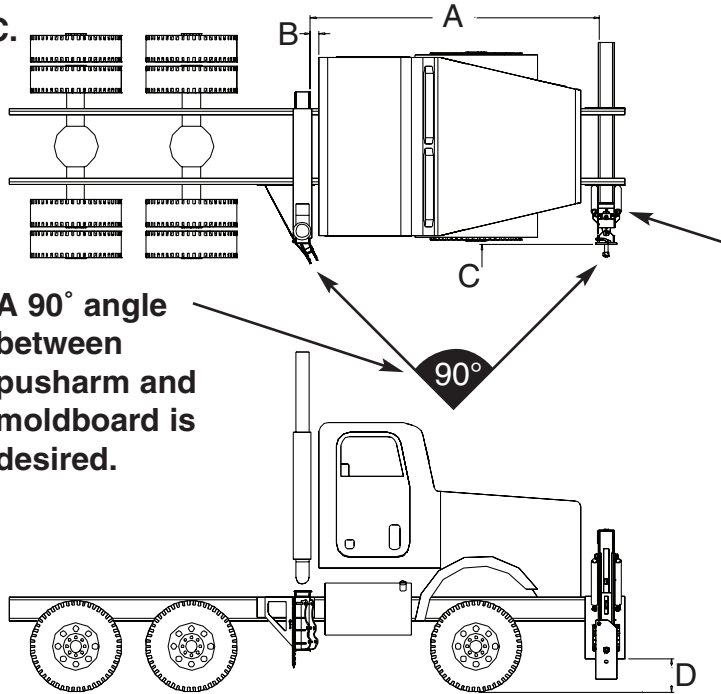
INSTALLATION INSTRUCTIONS

Note: Clamp equipment in place to insure proper fit before permanent installation.

REAR MOUNT INSTALLATION

1. Refer to the diagram and determine where the rear mount will be installed. Placement may vary due to the location of the exhaust pipe or other components already on the truck. Some of the components may need to be moved to create space for the rear mount.
2. Set the rear mount on the truck frame and clamp it in place. If bolts or rivets were removed from the frame, transfer the hole locations to the rear mount and drill so the bolts can be returned to the same holes. If no bolts were removed, drill where best suited.
3. With the rear mount in the correct position, attach a $\frac{1}{2}$ " x 4" x 4" x 8" angle (not included) as shown in the diagram. Drill (3) $\frac{1}{16}$ " holes through the mounting angle and the truck frame. Fasten with $\frac{5}{8}$ " bolts/top lock nuts and hardened washers. Weld the other side of the angle to the rear mount.

Figure C.



NOTE: A 90° angle between pusharm and moldboard is desired.

WARNING: When Clamping post and plow hitch to front frame - plow must not hit wing and wing must pick up snow from discharge of plow.

NOTE: Hood may not tilt and headlight may be covered. You may need power slide or tilt plus auxiliary lights.

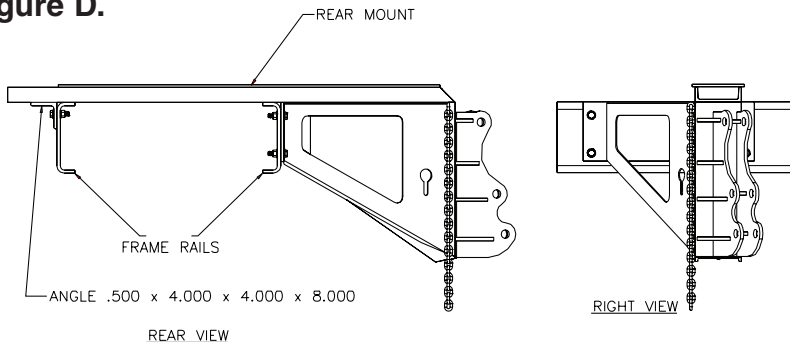
A = Will Vary*

B = Will Vary*

C = 2" Minimum (Allow 2" minimum clearance between widest point of truck cab or tire and moldboard mounting block. With wing in up position **turn wheels hard right to check clearance**)

D = 11" Average - (depending on desired float of above or below grade of road.)

Figure D.



*** Measurements are approximate and will vary depending upon moldboard length and desired clear path.**

INSTALLATION INSTRUCTIONS

MOLDBOARD INSTALLATION **Note: Clamp equipment in place to insure proper fit before permanent insulation.**

1. Connect the moldboard to the mounting block on the front post. The 1½” mounting bolt should already be in the mounting block. Lift the moldboard with a proper lifting device and line up the pivot hole with the mounting bolt. Secure the moldboard with a 1½” washer and slotted nut. Tighten the nut just until snug to allow the moldboard to pivot. Secure the nut with a ⅜” x 2” cotter pin. A lubricant is recommended between moldboard and mounting block.
2. Connect the lower pusharm bracket (and upper bracket if upper pusharm is being installed) to the moldboard with (3) ⅝” x 2½ bolts and top lock nuts. Placement of the pusharm mount will vary. **A 90° angle between pusharm and moldboard is desired.**
3. Connect the push arm to the rear mount and the wing moldboard using the pins provided with the push arm assembly.
4. When connecting wire rope cable to wing moldboard care must be taken when adjusting the length of the wire rope so the “toe” of moldboard lifts slightly “before” the heel of the moldboard lifts for correct operation this is done to prevent toe from digging in to pavement. **NOTE: Toe of cutting edge should be rounded off.**
5. Plumb the system according to the diagram.
6. Start the truck engine and raise the moldboard to the stored position. Lift slowly to avoid hitting cab or mirrors. Turn the truck wheels all the way to the right and check the clearance between the tire and the moldboard. There must be approximately 2” of clearance. **NOTE- This is a critical step and must be performed prior to securing the front cross tube to the side plates.**

PIPE BRACE INSTALLATION

1. Secure the cross tube to the guide angles/side plates as shown in Fig. B, Page 6.
2. Weld the (2) support bars to the post assembly as shown. Attach the (4) pipe ball ends to the support bars and the side plate for standard application (for powerslide application attach to the cross tube). Keep the ends in as straight a line as possible.
3. Measure the distance between the ball ends from center to center and cut the 2” x 42” pipes to that length. **NOTE-** Before measuring, be sure the wing post is in the operating (retracted) position. Tack weld the pipes to the ball ends. Remove and weld completely (See page xx for Welding Guidelines). Re-install and tighten the bolts.
Note: If power slide is required see page 12.

INSTALLATION INSTRUCTIONS

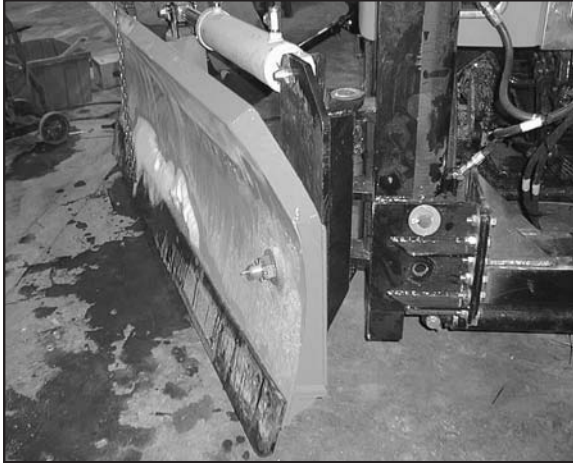
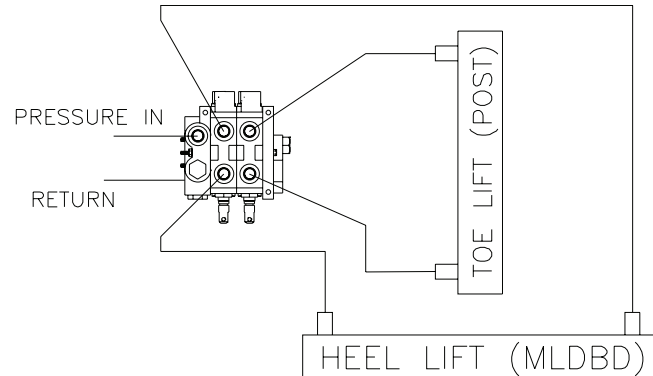


Figure E.



WING STOP AND SAFETY RESTRAINT CHAIN

1. With the wing in the raised position, weld the provided chain hook to the push arm. Find the correct position for the hook by extending the safety restraint chain that is welded to the rear mount to the push arm. Tack weld first and check for a good fit.
2. Build a stop block (not included) on the rear mount. $\frac{1}{2}$ " thick material is suggested. See below for reference.

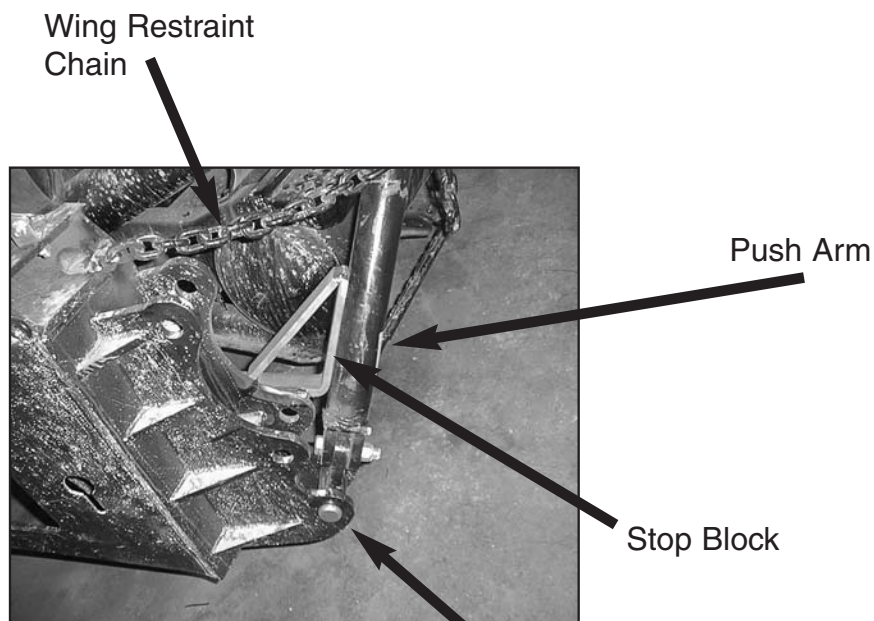


Figure F.

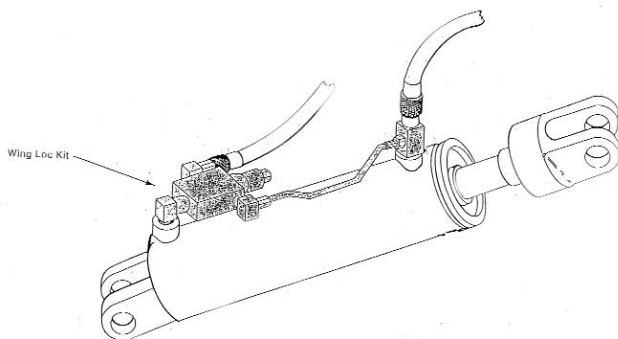
OPTIONAL REAR MOUNT INSTALLATION INSTRUCTIONS

Installation of Side Plates

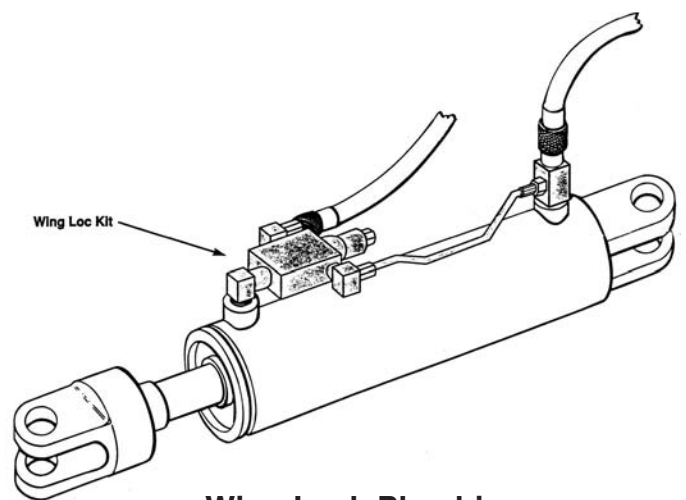
1. It may be necessary to relocate vehicle accessories for proper wing installation.
2. Mount side plates according to the diagrams on page 11.
4. Drill (4-6) $\frac{2}{32}$ " holes through side plates and frame. Fasten side plates with $\frac{5}{8}$ " bolts, washers & nuts included in the mounting hardware kit.
5. Weld support angles (*Not Furnished*), $\frac{3}{8}$ " x 3" x 3" x 11", behind side plates where they meet the frame. See page 11.

Installation of Optional Rear Tube

1. Slide tube into slots of side plates.
2. Locate rear tube 26" from face of rear right side plate to outside edge of tube end plate. Figure G, Page 11.
3. Install (4) $\frac{1}{2}$ " x 3" x 4" x 7" angles, included, that secure tubes in place. Right side angles will be bolted to side plate with $\frac{5}{8}$ " x 2 $\frac{1}{2}$ " bolts, top lock nuts & hardened washers and welded to the top and bottom of the tube. Left side angles will be welded to side plate and bolted through the tube with $\frac{5}{8}$ " x 7" bolts, top lock nuts & hardened washers. *This allows the tubes to be removable and easily re-installed.*
4. Optional Rear Mount may require additional bracing (not included).



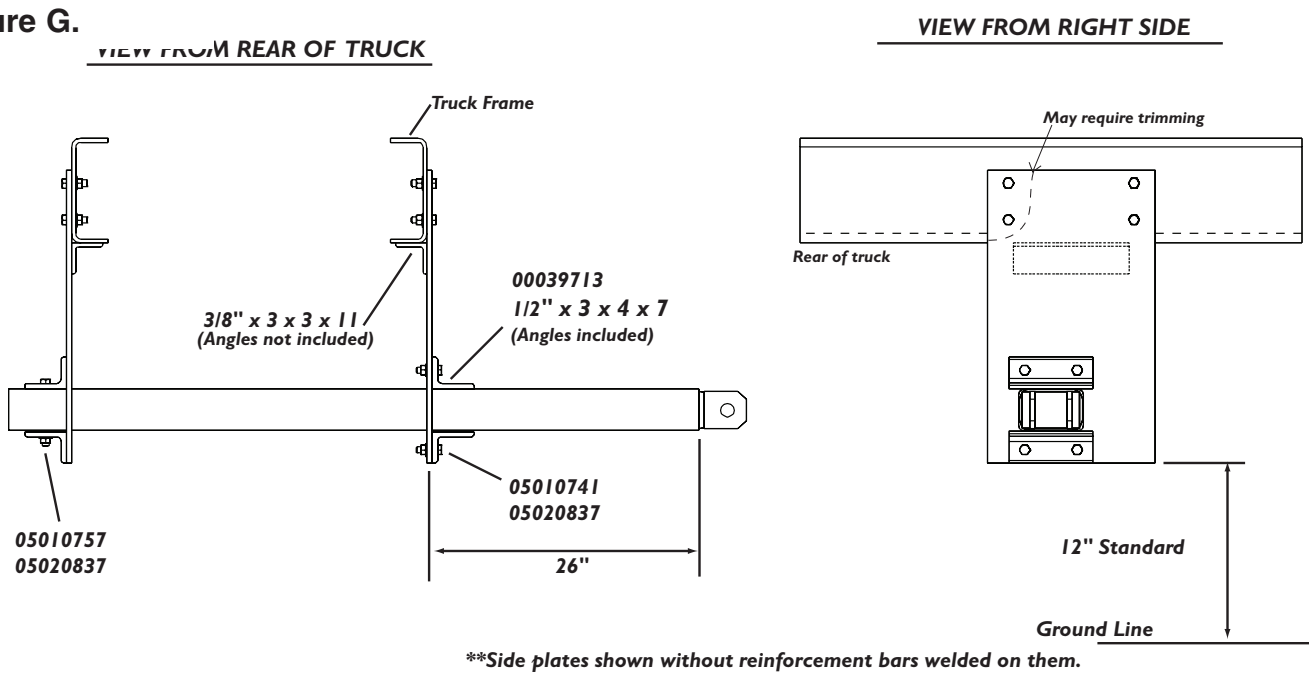
Wing Lock Plumbing
Install the lock valve at the base of the cylinder when you want the rod locked in the extended position.



Wing Lock Plumbing
Install the lock valve on the rod side of the cylinder when you want the rod locked in the collapsed position.

OPTIONAL REAR MOUNTS INSTALLATION INSTRUCTIONS

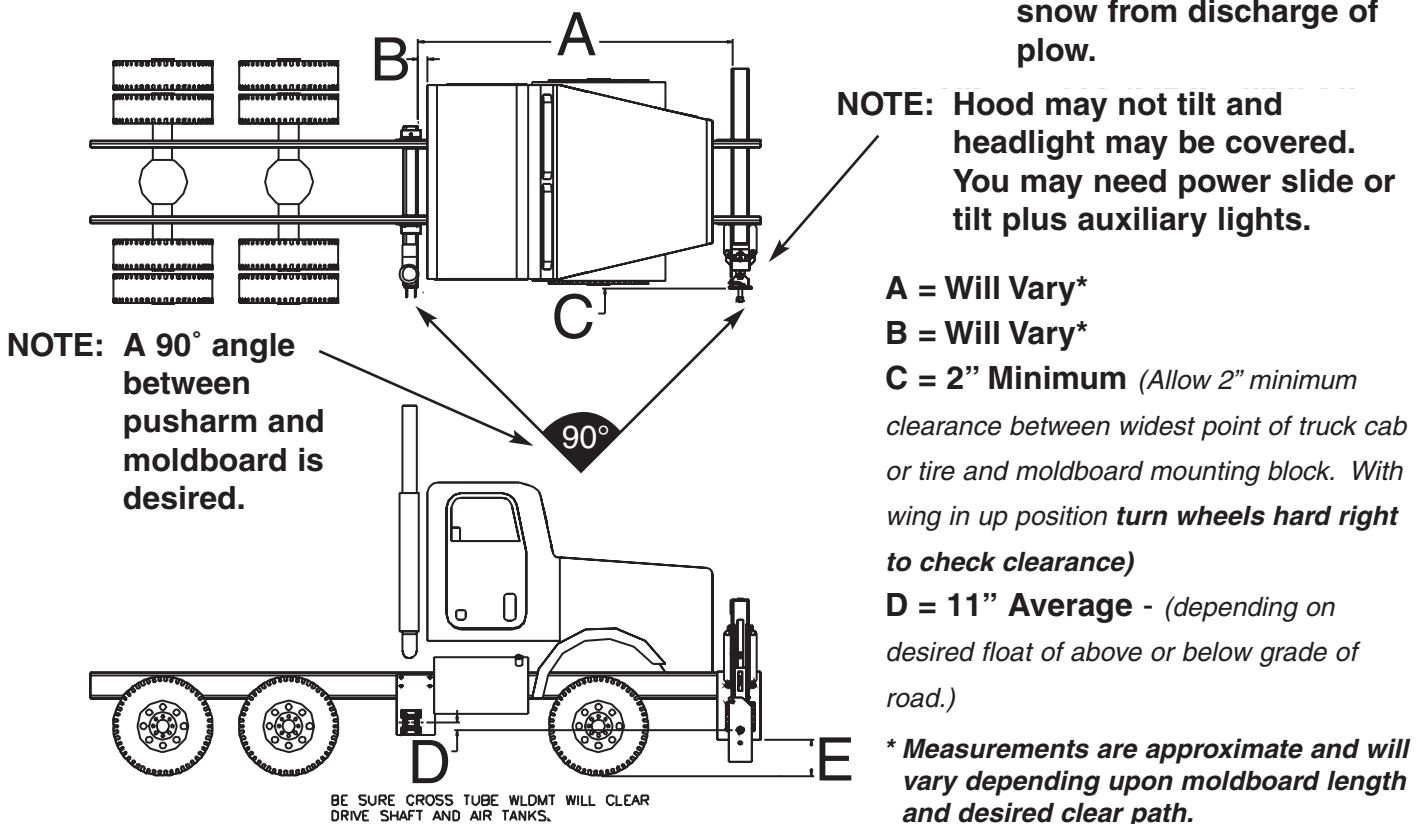
Figure G.



Note: Clamp equipment in place to insure proper fit before permanent installation.

WARNING: When Clamping post and plow hitch to front frame - plow must not hit wing and wing must pick up snow from discharge of plow.

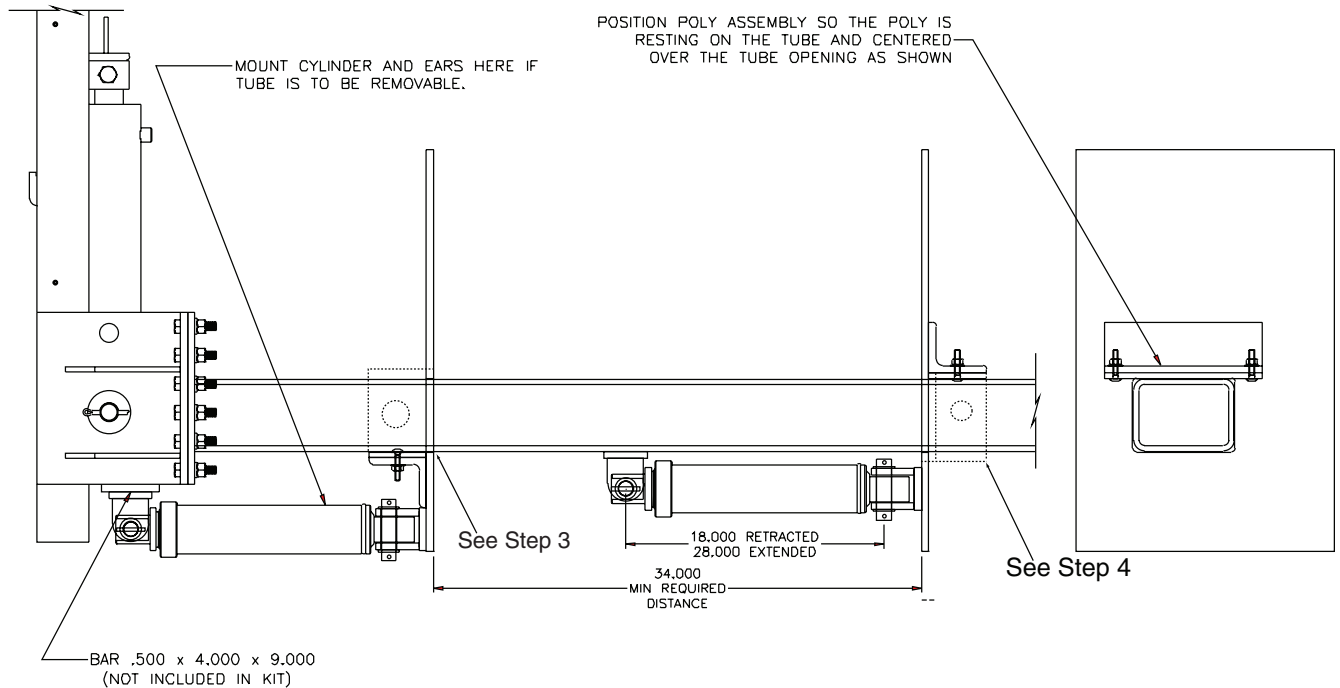
Figure H.



POWER SLIDE CYLINDER INSTALLATION INSTRUCTIONS

1. Follow the installation instructions for a standard mount. See pages 5-8. Perform these steps prior to attaching pipe braces.
2. Weld the (2) slide angles with poly surfaces to the side plates, keeping the angles located as shown below. Weld the clevis ends on the cylinder to the side plate and post or cross tube, depending on application
3. Lift the post side of the cross tube $\frac{1}{16}$ " so the weight of the tube rests on the poly surface and not the cutout in the side plate.
4. To secure the cross tube, attach (4) $\frac{1}{2}$ "x4"x4"x5" brackets (not included) that will serve as tube guides (pictured with hidden lines). Drill $1\frac{1}{16}$ " holes through the brackets and cross tube. Note- The cross tube **must** be in the operating position before drilling.
5. Secure the assembly with 1"x9" pins (not included).
6. Plumb the cylinder to the system. The power slide cylinder is plumbed similarly to the diagram on page 8-9.
7. Attach pipe braces to the cross tube, not the side plates.
8. Continue with standard installation.

Figure I.



POWER PUSH ARM INSTALLATION

1. Complete the entire installation including hydraulic system and controls. Unit must be operational. Attach push arms to rear support (or slide) and mount the wing. Connect cylinder as shown in Fig.J.

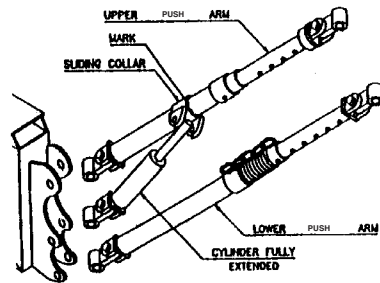


Fig. J

2. Using a chain falls or other suitable (and safe) lifting apparatus, raise the rear of the wing to its folded position. Raise the front to a carrying position. Note- If the front of the wing is raised high for this set-up, the rear may fold too close after the set-up and strike the mirror or cab. A suitable height for set-up purposes would be to raise the front of the wing just above the bottom of the front mast.
3. Operate the arm cylinder to extend it to its maximum length. With a welders pencil or paint, mark the upper arm at the outer end of the sliding collar. Fig. K

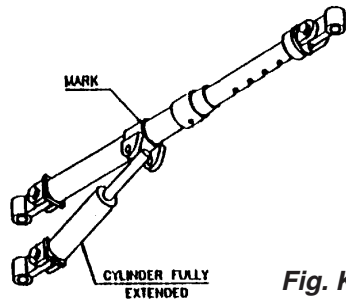


Fig. K

4. Lower the wing (front and rear) to the floor. Retract the arm cylinder completely. The outer split collar (for lifting) should be positioned one-half to three quarters of an inch inside (towards truck) the mark made in step 3. Weld the collar all around only on the side away from the sliding collar. Position other split collar against the back of the sliding collar and weld in the same manner. Weld seams also. Fig. L

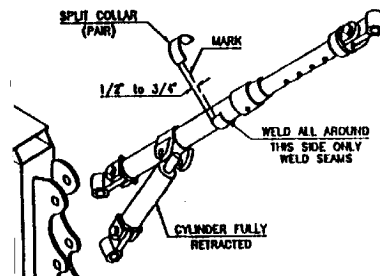


Fig. L

DISMOUNT INSTRUCTIONS

1. Lower the moldboard to the ground and disconnect the hydraulic hoses at the quick connect fittings.
2. Disconnect the heel cylinder from the mounting block. See Maintenance Instructions for off season care of cylinders.
3. Remove the push arm assembly from the rear mount and the moldboard. Return pins to push arm assembly.
4. Disconnect the moldboard from the mounting block. Return nut and washer to the mounting block.
5. Remove front post by disconnecting at cross tube or remove cross tube with post assembly.
6. Remove pipe braces and cross tube and return the bolts, nuts and pins to their proper locations.
7. Lubricating pivot points and repainting components will prolong life of wing kit.
8. Check condition of hydraulic hoses before returning to use. Replace if necessary

WELDING GUIDELINES

When installing any cast product that is to be attached via welding, these procedures should be followed.




- The individual performing the welds must be structurally certified.
- Components being welded should be cleaned prior to welding and free from corrosion or contamination that would compromise the weld. Some products are painted prior to shipping and all paint should be removed from the weld area as well.
- Moisture should be removed from the product. To ensure dryness, slight warming of the product with a torch is recommended. Warm the part to approximately 100 - 150 degrees Fahrenheit prior to welding.
- Use only low hydrogen welding rods, such as 7018 rods. Proper storage of welding rods should be practiced to avoid moisture absorption.
- Wire feed welding should be performed with AWS A5.18, ER70S-6, F6, wire in .035 - .045 diameter.
- All welding should have adequate penetration to obtain maximum strength on the item that is being welded. 3/8" fillet welds when possible or the largest fillet that can be accomplished on the particular assembly are a must. No under cutting on the finish passes is acceptable.
- Welding on products for reasons other than attachment is strictly prohibited and will void warranty.
- This information is solely for products that are to be welded on for means of attachment and is not to be interpreted as an alternative method of attachment for products designed to be fastened with bolts.

GENERAL INFORMATION

- Location descriptions are noted in direction of travel. (i.e. front, rear, left and right.)
- Delivery of replacement parts is subject to our sales delivery terms.
- Use only **Monroe Truck Equipment** O.E.M. replacement parts. Failure to do so will void warranty.
- Replacement parts listed in this manual reflect our most common plow items. If you do not find the part you require, please call your distributor.
- **Monroe Truck Equipment** reserves the right to make revisions or alterations to this parts manual.
- Spring modification and/or airbag may be required to carry additional weight of wing.

<i>Size of Moldboard</i>	<i>Approximate weight</i>
8' Moldboard	1400 lbs
9' Moldboard	1450 lbs
10' Moldboard	1500 lbs
11' Moldboard	1550 lbs
12' Moldboard	1600 lbs

TORQUE CHART

SIZE	 GRADE 2	 GRADE 5	 GRADE 8
1/4-20	50 IN-LBS	75 IN-LBS	9 FT-LBS
3/8-16	15 FT-LBS	23 FT-LBS	35 FT-LBS
1/2-13	35 FT-LBS	55 FT-LBS	80 FT-LBS
5/8-11	75 FT-LBS	110 FT-LBS	170 FT-LBS
3/4-10	130 FT-LBS	200 FT-LBS	280 FT-LBS
1-8	190 FT-LBS	480 FT-LBS	680 FT-LBS
1 1/4-7	380 FT-LBS	840 FT-LBS	1360 FT-LBS

SINGLE FUNCTION PATROL WING ASSEMBLIES

WING, 8'-12', 316

ITEM	QTY	PART #	DESCRIPTION
1	1	00037128	Rectangular Tube, 7 x 5 x $\frac{3}{8}$ x 72
2	1	00016214	Post Assembly (See page 28-29)
3	1	01130616	Mounting Block Weldment, Standard
4	1	01130460	Mounting Box, Single Function, w/ Bolts, Nuts (See page 50)
5	1	01130620	Bolt, 1½ - 6 x 6½, G8, HHCS, Zinc
6	1	00031792	Wing, Moldboard Weldment, 8', 316
	1	00031793	Wing, Moldboard Weldment, 9', 316
	1	00031794	Wing, Moldboard Weldment, 10', 316
	1	00031795	Wing, Moldboard Weldment, 11', 316
	1	00031796	Wing, Moldboard Weldment, 12', 316
	7	1	00039725
8	1	01131100	Bracket, Weldment, Mounting, RWM - R (See page 37)
9	1	---	Cutting Edge Kit, 8', $\frac{5}{8}$ x 8 (See page 40)
	1	---	Cutting Edge Kit, 9', $\frac{5}{8}$ x 8 (See page 40)
	1	---	Cutting Edge Kit, 10', $\frac{5}{8}$ x 8 (See page 40)
	1	---	Cutting Edge Kit, 11', $\frac{5}{8}$ x 8 (See page 40)
	1	---	Cutting Edge Kit, 12', $\frac{5}{8}$ x 8 (See page 40)
10	2	00038868	Pipe, 2 SCH 80 x 42

WING, 8'-12', 316, CARBIDE

ITEM	QTY	PART #	DESCRIPTION
1	1	00037128	Rectangular Tube, 7 x 5 x $\frac{3}{8}$ x 72
2	1	00016214	Post Assembly (See page 28-29)
3	1	01130616	Mounting Block, Standard
4	1	01130460	Mounting Box, Single Function, w/ Bolts, Nuts (See page 50)
5	1	01130620	Bolt, 1½ - 6 x 6½, G8, HHCS, Zinc
6	1	00031792	Wing, Moldboard Weldment, 8', 316
	1	00031793	Wing, Moldboard Weldment, 9', 316
	1	00031794	Wing, Moldboard Weldment, 10', 316
	1	00031795	Wing, Moldboard Weldment, 11', 316
	1	00031796	Wing, Moldboard Weldment, 12', 316
	7	1	00039725
8	1	01131100	Bracket, Weldment, Mounting, RWM - R (See page 37)
9	1	---	Cutting Edge Kit, 8', $\frac{3}{4}$ x 6, Carbide (See page 41)
	1	---	Cutting Edge Kit, 9', $\frac{3}{4}$ x 6, Carbide (See page 41)
	1	---	Cutting Edge Kit, 10', $\frac{3}{4}$ x 6, Carbide (See page 41)
	1	---	Cutting Edge Kit, 11', $\frac{3}{4}$ x 6, Carbide (See page 41)
	1	---	Cutting Edge Kit, 12', $\frac{3}{4}$ x 6, Carbide (See page 41)
10	2	00038868	Pipe, 2 SCH 80 x 42

WING, 8'-12', 316, LEFT

ITEM	QTY	PART #	DESCRIPTION
1	1	00037128	Rectangular Tube, 7 x 5 x $\frac{3}{8}$ x 72
2	1	00016262	Front Wing Post Assembly (See page 30-31)
3	1	01130616	Mounting Block, Standard
4	1	01130460	Mounting Box, Single Function, w/ Bolts, Nuts (See page 50)
5	1	01130620	Bolt, 1½ - 6 x 6½, G8,HHCS, Zinc
6	1	00049760	Wing, Moldboard Weldment, 8', 316, L
	1	00049761	Wing, Moldboard Weldment, 9', 316, L
	1	00049762	Wing, Moldboard Weldment, 10', 316, L
	1	00049763	Wing, Moldboard Weldment, 11', 316, L
	1	00049764	Wing, Moldboard Weldment, 12', 316, L
7	1	00039725	Bracket, LPA, Wing Mount (See page 44)
8	1	01320940	Wing Mount, Left Rear (See page 36)
9	1	---	Cutting Edge Kit, 8', $\frac{5}{8}$ x 8 (See page 40)
	1	---	Cutting Edge Kit, 9', $\frac{5}{8}$ x 8 (See page 40)
	1	---	Cutting Edge Kit, 10', $\frac{5}{8}$ x 8 (See page 40)
	1	---	Cutting Edge Kit, 11', $\frac{5}{8}$ x 8 (See page 40)
	1	---	Cutting Edge Kit, 12', $\frac{5}{8}$ x 8 (See page 40)
10	2	00038868	Pipe, 2 SCH 80 x 42

WING, 8'-12', 316, CARBIDE, LEFT

ITEM	QTY	PART #	DESCRIPTION
1	1	00037128	Rectangular Tube, 7 x 5 x $\frac{3}{8}$ x 72
2	1	00016262	Front Wing Post Assembly (See page 30-31)
3	1	01130616	Mounting Block, Standard
4	1	01130460	Mounting Box, Single Function, w/ Bolts, Nuts (See page 50)
5	1	01130620	Bolt, 1½ - 6 x 6½, G8,HHCS, Zinc
6	1	00049760	Wing, Moldboard Weldment, 8', 316, L
	1	00049761	Wing, Moldboard Weldment, 9', 316, L
	1	00049762	Wing, Moldboard Weldment, 10', 316, L
	1	00049763	Wing, Moldboard Weldment, 11', 316, L
	1	00049764	Wing, Moldboard Weldment, 12', 316, L
7	1	00039725	Bracket, LPA, Wing Mount (See page 44)
8	1	01320940	Wing Mount, Left Rear (See page 36)
9	1	---	Cutting Edge Kit, 8', $\frac{3}{4}$ x 6, Carbide (See page 41)
	1	---	Cutting Edge Kit, 9', $\frac{3}{4}$ x 6, Carbide (See page 41)
	1	---	Cutting Edge Kit, 10', $\frac{3}{4}$ x 6, Carbide (See page 41)
	1	---	Cutting Edge Kit, 11', $\frac{3}{4}$ x 6, Carbide (See page 41)
	1	---	Cutting Edge Kit, 12', $\frac{3}{4}$ x 6, Carbide (See page 41)
10	2	---	Pipe, 2 SCH 80 x 42

SINGLE FUNCTION FULL TRIP PATROL WING ASSEMBLIES

WING, 8'-12', 316, FULL TRIP

ITEM	QTY	PART #	DESCRIPTION
1	1	00037128	Rectangular Tube, 7 x 5 x $\frac{3}{8}$ x 72
2	1	00016214	Post Assembly (See page 28-29)
3	1	00030175	Mounting Block, Full Trip (See page 50)
4	1	01130460	Mounting Box, Single Function, w/ Bolts, Nuts (See page 50)
5	1	00031792	Wing, Moldboard Weldment, 8', 316
	1	00031793	Wing, Moldboard Weldment, 9', 316
	1	00031794	Wing, Moldboard Weldment, 10', 316
	1	00031795	Wing, Moldboard Weldment, 11', 316
	1	00031796	Wing, Moldboard Weldment, 12', 316
6	1	00039725	Bracket, LPA, Wing Mount (See page 44)
7	1	01131100	Bracket, Weldment, Mounting, RWM - R (See page 36)
8	1	---	Cutting Edge Kit, 8', $\frac{5}{8}$ x 8 (See page 41)
	1	---	Cutting Edge Kit, 9', $\frac{5}{8}$ x 8 (See page 41)
	1	---	Cutting Edge Kit, 10', $\frac{5}{8}$ x 8 (See page 41)
	1	---	Cutting Edge Kit, 11', $\frac{5}{8}$ x 8 (See page 41)
	1	---	Cutting Edge Kit, 12', $\frac{5}{8}$ x 8 (See page 41)
9	2	00038868	Pipe, 2 SCH 80 x 42
10	1	05035025	Spring, Extension, Full Trip

WING, 8'-12', 316, FULL TRIP, CARBIDE

ITEM	QTY	PART #	DESCRIPTION
1	1	00037128	Rectangular Tube, 7 x 5 x $\frac{3}{8}$ x 72
2	1	00016214	Post Assembly (See page 28-29)
3	1	00030175	Mounting Block, Full Trip (See page 50)
4	1	01130460	Mounting Box, Single Function, w/ Bolts, Nuts (See page 50)
5	1	00031792	Wing, Moldboard Weldment, 8', 316
	1	00031793	Wing, Moldboard Weldment, 9', 316
	1	00031794	Wing, Moldboard Weldment, 10', 316
	1	00031795	Wing, Moldboard Weldment, 11', 316
	1	00031796	Wing, Moldboard Weldment, 12', 316
6	1	00039725	Bracket, LPA, Wing Mount (See page 44)
7	1	01131100	Bracket, Weldment, Mounting, RWM - R (See page 37)
8	1	---	Cutting Edge Kit, 8', $\frac{3}{4}$ x 6, Carbide (See page 41)
	1	---	Cutting Edge Kit, 9', $\frac{3}{4}$ x 6, Carbide (See page 41)
	1	---	Cutting Edge Kit, 10', $\frac{3}{4}$ x 6, Carbide (See page 41)
	1	---	Cutting Edge Kit, 11', $\frac{3}{4}$ x 6, Carbide (See page 41)
	1	---	Cutting Edge Kit, 12', $\frac{3}{4}$ x 6, Carbide (See page 41)
9	2	00038868	Pipe, 2 SCH 80 x 42
10	1	05035025	Spring, Extension, Full Trip

WING, 8'-12', 316, FULL TRIP, LEFT

ITEM	QTY	PART #	DESCRIPTION
1	1	00037128	Rectangular Tube, 7 x 5 x $\frac{3}{8}$ x 72
2	1	00016262	Front Wing Post Assembly (See page 28-29)
3	1	00030175	Mounting Block, Full Trip (See page 50)
4	1	01130460	Mounting Box, Single Function, w/ Bolts, Nuts (See page 50)
5	1	00049760	Wing, Moldboard Weldment, 8', 316, L
	1	00049761	Wing, Moldboard Weldment, 9', 316, L
	1	00049762	Wing, Moldboard Weldment, 10', 316, L
	1	00049763	Wing, Moldboard Weldment, 11', 316, L
	1	00049764	Wing, Moldboard Weldment, 12', 316, L
6	1	00039725	Bracket, LPA, Wing Mount (See page 42)
7	1	01320940	Wing Mount, Left Rear (See page 34)
8	1	---	Cutting Edge Kit, 8', $\frac{5}{8}$ x 8 (See page 40)
	1	---	Cutting Edge Kit, 9', $\frac{5}{8}$ x 8 (See page 40)
	1	---	Cutting Edge Kit, 10', $\frac{5}{8}$ x 8 (See page 40)
	1	---	Cutting Edge Kit, 11', $\frac{5}{8}$ x 8 (See page 40)
	1	---	Cutting Edge Kit, 12', $\frac{5}{8}$ x 8 (See page 40)
9	2	00038868	Pipe, 2 SCH 80 x 42
10	1	05035025	Spring, Extension, Full Trip

WING, 8'-12', 316, FULL TRIP, LEFT, CARBIDE

ITEM	QTY	PART #	DESCRIPTION
1	1	00037128	Rectangular Tube, 7 x 5 x $\frac{3}{8}$ x 72
2	1	00016262	Front Wing Post Assembly (See page 28-29)
3	1	00030175	Mounting Block, Full Trip (See page 50)
4	1	01130460	Mounting Box, Single Function, w/ Bolts, Nuts (See page 50)
5	1	00049760	Wing, Moldboard Weldment, 8', 316, L
	1	00049761	Wing, Moldboard Weldment, 9', 316, L
	1	00049762	Wing, Moldboard Weldment, 10', 316, L
	1	00049763	Wing, Moldboard Weldment, 11', 316, L
	1	00049764	Wing, Moldboard Weldment, 12', 316, L
6	1	00039725	Bracket, LPA, Wing Mount (See page 44)
7	1	01320940	Wing Mount, Left Rear (See page 36)
8	1	---	Cutting Edge Kit, 8', $\frac{3}{4}$ x 6, Carbide (See page 41)
	1	---	Cutting Edge Kit, 9', $\frac{3}{4}$ x 6, Carbide (See page 41)
	1	---	Cutting Edge Kit, 10', $\frac{3}{4}$ x 6, Carbide (See page 41)
	1	---	Cutting Edge Kit, 11', $\frac{3}{4}$ x 6, Carbide (See page 41)
	1	---	Cutting Edge Kit, 12', $\frac{3}{4}$ x 6, Carbide (See page 41)
9	2	00038868	Pipe, 2 SCH 80 x 42
10	1	05035025	Spring, Extension, Full Trip

SINGLE FUNCTION TRIP EDGE PATROL WING ASSEMBLIES

WING, 8'-12', 316, TRIP EDGE

ITEM	QTY	PART #	DESCRIPTION
1	1	00037128	Rectangular Tube, 7 x 5 x $\frac{3}{8}$ x 72
2	1	00016214	Post Assembly (See page 28-29)
3	1	01130616	Mounting Block, Standard
4	1	01130460	Mounting Box, Single Function, w/ Bolts, Nuts (See page 50)
5	1	01130620	Bolt, 1½ - 6 x 6½, G8, HHCS, Zinc
6	1	00038177	Wing, Moldboard Assembly, 8', Trip Edge, 316 (See page 38)
	1	00038178	Wing, Moldboard Assembly, 9', Trip Edge, 316 (See page 38)
	1	00038179	Wing, Moldboard Assembly, 10', Trip Edge, 316 (See page 38)
	1	00038180	Wing, Moldboard Assembly, 11', Trip Edge, 316 (See page 38)
	1	00038181	Wing, Moldboard Assembly, 12', Trip Edge, 316 (See page 38)
7	1	00039725	Bracket, LPA, Wing Mount (See page 44)
8	1	01131100	Bracket, Weldment, Mounting, RWM - R (See page 37)
9	1	---	Cutting Edge Kit, 8', $\frac{5}{8}$ x 8, Trip Edge (See page 40)
	1	---	Cutting Edge Kit, 9', $\frac{5}{8}$ x 8, Trip Edge (See page 40)
	1	---	Cutting Edge Kit, 10', $\frac{5}{8}$ x 8, Trip Edge (See page 40)
	1	---	Cutting Edge Kit, 11', $\frac{5}{8}$ x 8, Trip Edge (See page 40)
	1	---	Cutting Edge Kit, 12', $\frac{5}{8}$ x 8, Trip Edge (See page 40)
10	2	00038868	Pipe, 2 SCH 80 x 42

WING, 8'-12', 316, TRIP EDGE, CARBIDE

ITEM	QTY	PART #	DESCRIPTION
1	1	00037128	Rectangular Tube, 7 x 5 x $\frac{3}{8}$ x 72
2	1	00016214	Post Assembly (See page 28-29)
3	1	01130616	Mounting Block, Standard
4	1	01130460	Mounting Box, Single Function, w/ Bolts, Nuts (See page 50)
5	1	01130620	Bolt, 1½ - 6 x 6½, G8, HHCS, Zinc
6	1	00038177	Wing, Moldboard Assembly, 8', Trip Edge, 316 (See page 40)
	1	00038178	Wing, Moldboard Assembly, 9', Trip Edge, 316 (See page 40)
	1	00038179	Wing, Moldboard Assembly, 10', Trip Edge, 316 (See page 40)
	1	00038180	Wing, Moldboard Assembly, 11', Trip Edge, 316 (See page 40)
	1	00038181	Wing, Moldboard Assembly, 12', Trip Edge, 316 (See page 40)
7	1	00039725	Bracket, LPA, Wing Mount (See page 44)
8	1	01131100	Bracket, Weldment, Mounting, RWM - R (See page 37)
9	1	---	Cutting Edge Kit, 8', $\frac{3}{4}$ x 6, Carbide (See page 41)
	1	---	Cutting Edge Kit, 9', $\frac{3}{4}$ x 6, Carbide (See page 41)
	1	---	Cutting Edge Kit, 10', $\frac{3}{4}$ x 6, Carbide (See page 41)
	1	---	Cutting Edge Kit, 11', $\frac{3}{4}$ x 6, Carbide (See page 41)
	1	---	Cutting Edge Kit, 12', $\frac{3}{4}$ x 6, Carbide (See page 41)
10	2	00038868	Pipe, 2 SCH 80 x 42

WING, 8'-12', 316, TRIP EDGE, LEFT

ITEM	QTY	PART #	DESCRIPTION
1	1	00037128	Rectangular Tube, 7 x 5 x $\frac{3}{8}$ x 72
2	1	00016262	Front Wing Post Assembly (See page 30-31)
3	1	01130616	Mounting Block, Standard
4	1	01130460	Mounting Box, Single Function, w/ Bolts, Nuts (See page 50)
5	1	01130620	Bolt, 1½ - 6 x 6½, G8, HHCS, Zinc
6	1	00049787	Wing, Moldboard Assembly, 8', Trip Edge, L, 316 (See page 39)
	1	00049788	Wing, Moldboard Assembly, 9', Trip Edge, L, 316 (See page 39)
	1	00049789	Wing, Moldboard Assembly, 10', Trip Edge, L, 316 (See page 39)
	1	00049790	Wing, Moldboard Assembly, 11', Trip Edge, L, 316 (See page 39)
	1	00049791	Wing, Moldboard Assembly, 12', Trip Edge, L, 316 (See page 39)
7	1	00039725	Bracket, LPA, Wing Mount (See page 44)
8	1	01230940	Wing Mount, Left Rear (See page 36)
9	1	--	Cutting Edge Kit, 8', $\frac{5}{8}$ x 8, Trip Edge (See page 40)
	1	---	Cutting Edge Kit, 9', $\frac{5}{8}$ x 8, Trip Edge (See page 40)
	1	---	Cutting Edge Kit, 10', $\frac{5}{8}$ x 8, Trip Edge (See page 40)
	1	---	Cutting Edge Kit, 11', $\frac{5}{8}$ x 8, Trip Edge (See page 40)
	1	---	Cutting Edge Kit, 12', $\frac{5}{8}$ x 8, Trip Edge (See page 40)
10	2	00038868	Pipe, 2 SCH 80 x 42

WING, 8'-12', 316, TRIP EDGE, LEFT, CARBIDE

ITEM	QTY	PART #	DESCRIPTION
1	1	00037128	Rectangular Tube, 7 x 5 x $\frac{3}{8}$ x 72
2	1	00016262	Front Wing Post Assembly (See page 28-29)
3	1	01130616	Mounting Block, Standard
4	1	01130460	Mounting Box, Single Function, w/ Bolts, Nuts (See page 50)
5	1	01130620	Bolt, 1½ - 6 x 6½, G8, HHCS, Zinc
6	1	00049787	Wing, Moldboard Assembly, 8', Trip Edge, L, 316 (See page 39)
	1	00049788	Wing, Moldboard Assembly, 9', Trip Edge, L, 316 (See page 39)
	1	00049789	Wing, Moldboard Assembly, 10', Trip Edge, L, 316 (See page 39)
	1	00049790	Wing, Moldboard Assembly, 11', Trip Edge, L, 316 (See page 39)
	1	00049791	Wing, Moldboard Assembly, 12', Trip Edge, L, 316 (See page 39)
7	1	00039725	Bracket, LPA, Wing Mount (See page 44)
8	1	01230940	Wing Mount, Left Rear (See page 36)
9	1	---	Cutting Edge Kit, 8', $\frac{3}{4}$ x 6, Carbide (See page 41)
	1	---	Cutting Edge Kit, 9', $\frac{3}{4}$ x 6, Carbide (See page 41)
	1	---	Cutting Edge Kit, 10', $\frac{3}{4}$ x 6, Carbide (See page 41)
	1	---	Cutting Edge Kit, 11', $\frac{3}{4}$ x 6, Carbide (See page 41)
	1	---	Cutting Edge Kit, 12', $\frac{3}{4}$ x 6, Carbide (See page 41)
10	2	00038868	Pipe, 2 SCH 80 x 42

SINGLE FUNCTION PATROL WING ASSEMBLIES, STRAIGHT

WING, 8'-12', 316, STRAIGHT

ITEM	QTY	PART #	DESCRIPTION
1	1	00037128	Rectangular Tube, 7 x 5 x $\frac{3}{8}$ x 72
2	1	00016214	Post Assembly (See page 28-29)
3	1	01130616	Mounting Block, Standard
4	1	01130460	Mounting Box, Single Function, w/ Bolts, Nuts (See page 50)
5	1	01130620	Bolt, 1 $\frac{1}{2}$ - 6 x 6 $\frac{1}{2}$, G8, HHCS, Zinc
6	1	00033102	Wing, Moldboard Weldment, 8', 316, Straight
	1	00033103	Wing, Moldboard Weldment, 9', 316, Straight
	1	00033104	Wing, Moldboard Weldment, 10', 316, Straight
	1	00033105	Wing, Moldboard Weldment, 11', 316, Straight
	1	00033106	Wing, Moldboard Weldment, 12', 316, Straight
	7	1	00039725
8	1	01131100	Bracket, Weldment, Mounting, RWM - R (See page 37)
9	1	---	Cutting Edge Kit, 8', $\frac{5}{8}$ x 8 (See page 40)
	1	---	Cutting Edge Kit, 9', $\frac{5}{8}$ x 8 (See page 40)
	1	---	Cutting Edge Kit, 10', $\frac{5}{8}$ x 8 (See page 40)
	1	---	Cutting Edge Kit, 11', $\frac{5}{8}$ x 8 (See page 40)
	1	---	Cutting Edge Kit, 12', $\frac{5}{8}$ x 8 (See page 40)
	10	2	00038868

WING, 8'-12', 316, CARBIDE, STRAIGHT

ITEM	QTY	PART #	DESCRIPTION
1	1	00037128	Rectangular Tube, 7 x 5 x $\frac{3}{8}$ x 72
2	1	00016214	Post Assembly (See page 28-29)
3	1	01130616	Mounting Block, Standard
4	1	01130460	Mounting Box, Single Function, w/ Bolts, Nuts (See page 50)
5	1	01130620	Bolt, 1 $\frac{1}{2}$ - 6 x 6 $\frac{1}{2}$, G8, HHCS, Zinc
6	1	00033102	Wing, Moldboard Weldment, 8', 316, Straight
	1	00033103	Wing, Moldboard Weldment, 9', 316, Straight
	1	00033104	Wing, Moldboard Weldment, 10', 316, Straight
	1	00033105	Wing, Moldboard Weldment, 11', 316, Straight
	1	00033106	Wing, Moldboard Weldment, 12', 316, Straight
	7	1	00039725
8	1	01131100	Bracket, Weldment, Mounting, RWM - R (See page 37)
9	1	---	Cutting Edge Kit, 8', $\frac{3}{4}$ x 6, Carbide (See page 41)
	1	---	Cutting Edge Kit, 9', $\frac{3}{4}$ x 6, Carbide (See page 41)
	1	---	Cutting Edge Kit, 10', $\frac{3}{4}$ x 6, Carbide (See page 41)
	1	---	Cutting Edge Kit, 11', $\frac{3}{4}$ x 6, Carbide (See page 41)
	1	---	Cutting Edge Kit, 12', $\frac{3}{4}$ x 6, Carbide (See page 41)
	10	2	00038868

WING, 8'-12', 316, LEFT, STRAIGHT

ITEM	QTY	PART #	DESCRIPTION
1	1	00037128	Rectangular Tube, 7 x 5 x $\frac{3}{8}$ x 72
2	1	00016262	Front Wing Post Assembly (See page 30-31)
3	1	01130616	Mounting Block, Standard
4	1	01130460	Mounting Box, Single Function, w/ Bolts, Nuts (See page 50)
5	1	01130620	Bolt, 1½ - 6 x 6½, G8,HHCS, Zinc
6	1	00049755	Wing, Moldboard Weldment, 8', 316, L
	1	00049756	Wing, Moldboard Weldment, 9', 316, L
	1	00049757	Wing, Moldboard Weldment, 10', 316, L
	1	00049758	Wing, Moldboard Weldment, 11', 316, L
	1	00049759	Wing, Moldboard Weldment, 12', 316, L
7	1	00039725	Bracket, LPA, Wing Mount (See page 44)
8	1	01320940	Wing Mount, Left Rear (See page 36)
9	1	---	Cutting Edge Kit, 8', $\frac{5}{8}$ x 8 (See page 40)
	1	---	Cutting Edge Kit, 9', $\frac{5}{8}$ x 8 (See page 40)
	1	---	Cutting Edge Kit, 10', $\frac{5}{8}$ x 8 (See page 40)
	1	---	Cutting Edge Kit, 11', $\frac{5}{8}$ x 8 (See page 40)
	1	---	Cutting Edge Kit, 12', $\frac{5}{8}$ x 8 (See page 40)
10	2	00038868	Pipe, 2 SCH 80 x 42

WING, 8'-12', 316, CARBIDE, LEFT, STRAIGHT

ITEM	QTY	PART #	DESCRIPTION
1	1	00037128	Rectangular Tube, 7 x 5 x $\frac{3}{8}$ x 72
2	1	00016262	Front Wing Post Assembly (See page 30-31)
3	1	01130616	Mounting Block, Standard
4	1	01130460	Mounting Box, Single Function, w/ Bolts, Nuts (See page 50)
5	1	01130620	Bolt, 1½ - 6 x 6½, G8,HHCS, Zinc
6	1	00049755	Wing, Moldboard Weldment, 8', 316, L
	1	00049756	Wing, Moldboard Weldment, 9', 316, L
	1	00049757	Wing, Moldboard Weldment, 10', 316, L
	1	00049758	Wing, Moldboard Weldment, 11', 316, L
	1	00049759	Wing, Moldboard Weldment, 12', 316, L
7	1	00039725	Bracket, LPA, Wing Mount (See page 44)
8	1	01320940	Wing Mount, Left Rear (See page 36)
9	1	---	Cutting Edge Kit, 8', $\frac{3}{4}$ x 6, Carbide (See page 41)
	1	---	Cutting Edge Kit, 9', $\frac{3}{4}$ x 6, Carbide (See page 41)
	1	---	Cutting Edge Kit, 10', $\frac{3}{4}$ x 6, Carbide (See page 41)
	1	---	Cutting Edge Kit, 11', $\frac{3}{4}$ x 6, Carbide (See page 41)
	1	---	Cutting Edge Kit, 12', $\frac{3}{4}$ x 6, Carbide (See page 41)
10	2	00038868	Pipe, 2 SCH 80 x 42

SINGLE FUNCTION FULL TRIP PATROL WING ASSEMBLIES, STRAIGHT

WING, 8'-12', 316, FULL TRIP, STRAIGHT

ITEM	QTY	PART #	DESCRIPTION
1	1	00037128	Rectangular Tube, 7 x 5 x $\frac{3}{8}$ x 72
2	1	00016214	Post Assembly (See page 28-29)
3	1	00030175	Mounting Block, Full Trip, RH (See page 48)
4	1	01130460	Mounting Box, Single Function, w/ Bolts, Nuts (See page 50)
5	1	00033102	Wing, Moldboard Weldment, 8', 316
	1	00033103	Wing, Moldboard Weldment, 9', 316
	1	00033104	Wing, Moldboard Weldment, 10', 316
	1	00033105	Wing, Moldboard Weldment, 11', 316
	1	00033106	Wing, Moldboard Weldment, 12', 316
6	1	00039725	Bracket, LPA, Wing Mount (See page 44)
7	1	01131100	Bracket, Weldment, Mounting, RWM - R (See page 37)
8	1	---	Cutting Edge Kit, 8', $\frac{5}{8}$ x 8 (See page 40)
	1	---	Cutting Edge Kit, 9', $\frac{5}{8}$ x 8 (See page 40)
	1	---	Cutting Edge Kit, 10', $\frac{5}{8}$ x 8 (See page 40)
	1	---	Cutting Edge Kit, 11', $\frac{5}{8}$ x 8 (See page 40)
	1	---	Cutting Edge Kit, 12', $\frac{5}{8}$ x 8 (See page 40)
9	2	00038868	Pipe, 2 SCH 80 x 42
10	1	05035025	Spring, Extension, Full Trip

WING, 8'-12', 316, FULL TRIP, CARBIDE, STRAIGHT

ITEM	QTY	PART #	DESCRIPTION
1	1	00031728	Rectangular Tube, 7 x 5 x $\frac{3}{8}$ x 72
2	1	00016214	Post Assembly (See page 28-29)
3	1	00030175	Mounting Block, Full Trip, RH (See page 50)
4	1	01130460	Mounting Box, Single Function, w/ Bolts, Nuts (See page 50)
5	1	00033102	Wing, Moldboard Weldment, 8', 316
	1	00033103	Wing, Moldboard Weldment, 9', 316
	1	00033104	Wing, Moldboard Weldment, 10', 316
	1	00033105	Wing, Moldboard Weldment, 11', 316
	1	00033106	Wing, Moldboard Weldment, 12', 316
6	1	00039725	Bracket, LPA, Wing Mount (See page 44)
7	1	01131100	Bracket, Weldment, Mounting, RWM - R (See page 37)
8	1	---	Cutting Edge Kit, 8', $\frac{3}{4}$ x 6, Carbide (See page 41)
	1	---	Cutting Edge Kit, 9', $\frac{3}{4}$ x 6, Carbide (See page 41)
	1	---	Cutting Edge Kit, 10', $\frac{3}{4}$ x 6, Carbide (See page 41)
	1	---	Cutting Edge Kit, 11', $\frac{3}{4}$ x 6, Carbide (See page 41)
	1	---	Cutting Edge Kit, 12', $\frac{3}{4}$ x 6, Carbide (See page 41)
9	2	00038868	Pipe, 2 SCH 80 x 42
10	1	05035025	Spring, Extension, Full Trip

WING, 8'-12', 316, FULL TRIP, LEFT, STRAIGHT

ITEM	QTY	PART #	DESCRIPTION
1	1	00037128	Rectangular Tube, 7 x 5 x $\frac{3}{8}$ x 72
2	1	00016262	Front Wing Post Assembly (See page 30-31)
3	1	00030175	Mounting Block, Full Trip, RH (See page 50)
4	1	01130460	Mounting Box, Single Function, w/ Bolts, Nuts (See page 50)
5	1	00049755	Wing, Moldboard Weldment, 8', 316, L
	1	00049756	Wing, Moldboard Weldment, 9', 316, L
	1	00049757	Wing, Moldboard Weldment, 10', 316, L
	1	00049758	Wing, Moldboard Weldment, 11', 316, L
	1	00049759	Wing, Moldboard Weldment, 12', 316, L
6	1	00039725	Bracket, LPA, Wing Mount (See page 44)
7	1	01320940	Wing Mount, Left Rear (See page 36)
8	1	---	Cutting Edge Kit, 8', $\frac{5}{8}$ x 8 (See page 40)
	1	---	Cutting Edge Kit, 9', $\frac{5}{8}$ x 8 (See page 40)
	1	---	Cutting Edge Kit, 10', $\frac{5}{8}$ x 8 (See page 40)
	1	---	Cutting Edge Kit, 11', $\frac{5}{8}$ x 8 (See page 40)
	1	---	Cutting Edge Kit, 12', $\frac{5}{8}$ x 8 (See page 40)
9	2	00038868	Pipe, 2 SCH 80 x 42
10	1	05035025	Spring, Extension, Full Trip

WING, 8'-12', 316, FULL TRIP, LEFT, CARBIDE, STRAIGHT

ITEM	QTY	PART #	DESCRIPTION
1	1	00037128	Rectangular Tube, 7 x 5 x $\frac{3}{8}$ x 72
2	1	00016262	Front Wing Post Assembly (See page 30-31)
3	1	00030175	Mounting Block, Full Trip, RH (See page 50)
4	1	01130460	Mounting Box, Single Function, w/ Bolts, Nuts (See page 50)
5	1	00049755	Wing, Moldboard Weldment, 8', 316, L
	1	00049756	Wing, Moldboard Weldment, 9', 316, L
	1	00049757	Wing, Moldboard Weldment, 10', 316, L
	1	00049758	Wing, Moldboard Weldment, 11', 316, L
	1	00049759	Wing, Moldboard Weldment, 12', 316, L
6	1	00039725	Bracket, LPA, Wing Mount (See page 44)
7	1	01320940	Wing Mount, Left Rear (See page 36)
8	1	---	Cutting Edge Kit, 8', $\frac{3}{4}$ x 6, Carbide (See page 41)
	1	---	Cutting Edge Kit, 9', $\frac{3}{4}$ x 6, Carbide (See page 41)
	1	---	Cutting Edge Kit, 10', $\frac{3}{4}$ x 6, Carbide (See page 41)
	1	---	Cutting Edge Kit, 11', $\frac{3}{4}$ x 6, Carbide (See page 41)
	1	---	Cutting Edge Kit, 12', $\frac{3}{4}$ x 6, Carbide (See page 41)
9	2	00038868	Pipe, 2 SCH 80 x 42
10	1	05035025	Spring, Extension, Full Trip

SINGLE FUNCTION TRIP EDGE PATROL WING ASSEMBLIES, STRAIGHT

WING, 8'-12', 316, TRIP EDGE, STRAIGHT

ITEM	QTY	PART #	DESCRIPTION
1	1	00037128	Rectangular Tube, 7 x 5 x $\frac{3}{8}$ x 72
2	1	00016214	Post Assembly (See page 28-29)
3	1	01130616	Mounting Block, Standard
4	1	01130460	Mounting Box, Single Function, w/ Bolts, Nuts (See page 50)
5	1	01130620	Bolt, 1½ - 6 x 6½, G8, HHCS, Zinc
6	1	00030194	Wing, Moldboard Assembly, 8', Trip Edge, 316
	1	00030195	Wing, Moldboard Assembly, 9', Trip Edge, 316
	1	00030196	Wing, Moldboard Assembly, 10', Trip Edge, 316
	1	00030197	Wing, Moldboard Assembly, 11', Trip Edge, 316
	1	00030198	Wing, Moldboard Assembly, 12', Trip Edge, 316
7	1	00039725	Bracket, LPA, Wing Mount (See page 44)
8	1	01131100	Bracket, Weldment, Mounting, RWM - R (See page 37)
9	1	---	Cutting Edge Kit, 8', $\frac{5}{8}$ x 8, Trip Edge (See page 40)
	1	---	Cutting Edge Kit, 9', $\frac{5}{8}$ x 8, Trip Edge (See page 40)
	1	---	Cutting Edge Kit, 10', $\frac{5}{8}$ x 8, Trip Edge (See page 40)
	1	---	Cutting Edge Kit, 11', $\frac{5}{8}$ x 8, Trip Edge (See page 40)
	1	---	Cutting Edge Kit, 12', $\frac{5}{8}$ x 8, Trip Edge (See page 40)
10	2	00038868	Pipe, 2 SCH 80 x 42

WING, 8'-12', 316, TRIP EDGE, CARBIDE, STRAIGHT

ITEM	QTY	PART #	DESCRIPTION
1	1	00037128	Rectangular Tube, 7 x 5 x $\frac{3}{8}$ x 72
2	1	00016214	Post Assembly (See page 28-29)
3	1	01130616	Mounting Block, Standard
4	1	01130460	Mounting Box, Single Function, w/ Bolts, Nuts (See page 50)
5	1	01130620	Bolt, 1½ - 6 x 6½, G8, HHCS, Zinc
6	1	00030194	Wing, Moldboard Assembly, 8', Trip Edge, 316
	1	00030195	Wing, Moldboard Assembly, 9', Trip Edge, 316
	1	00030196	Wing, Moldboard Assembly, 10', Trip Edge, 316
	1	00030197	Wing, Moldboard Assembly, 11', Trip Edge, 316
	1	00030198	Wing, Moldboard Assembly, 12', Trip Edge, 316
7	1	00039725	Bracket, LPA, Wing Mount (See page 44)
8	1	01131100	Bracket, Weldment, Mounting, RWM - R (See page 37)
9	1	---	Cutting Edge Kit, 8', $\frac{3}{4}$ x 6, Carbide (See page 41)
	1	---	Cutting Edge Kit, 9', $\frac{3}{4}$ x 6, Carbide (See page 41)
	1	---	Cutting Edge Kit, 10', $\frac{3}{4}$ x 6, Carbide (See page 41)
	1	---	Cutting Edge Kit, 11', $\frac{3}{4}$ x 6, Carbide (See page 41)
	1	---	Cutting Edge Kit, 12', $\frac{3}{4}$ x 6, Carbide (See page 41)
10	2	00038868	Pipe, 2 SCH 80 x 42

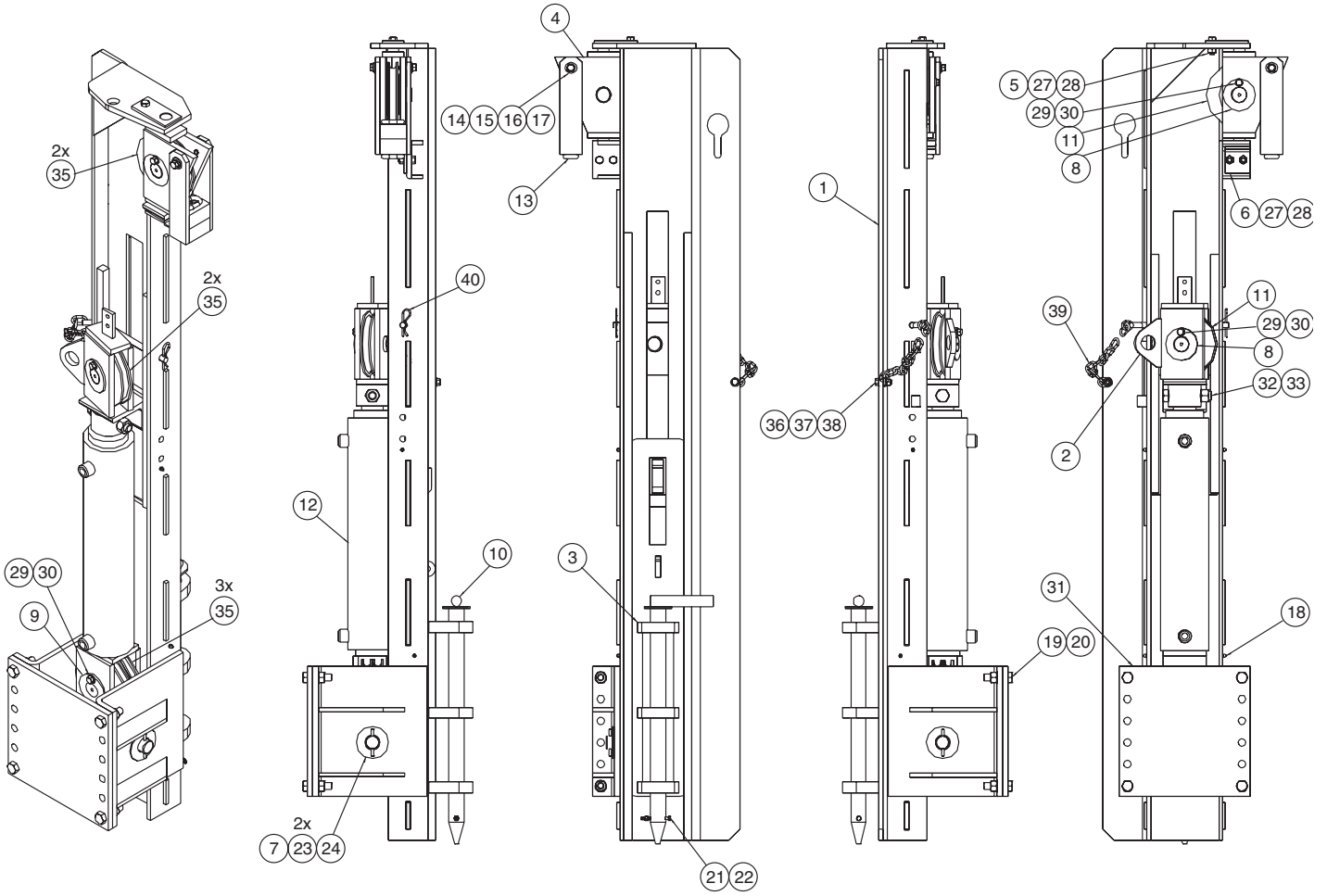
WING, 8'-12', 316, TRIP EDGE, LEFT, STRAIGHT

ITEM	QTY	PART #	DESCRIPTION
1	1	00037128	Rectangular Tube, 7 x 5 x 3/8 x 72
2	1	00016262	Front Wing Post Assembly (See page 30-31)
3	1	01130616	Mounting Block, Standard
4	1	01130460	Mounting Box, Single Function, w/ Bolts, Nuts (See page 50)
5	1	01130620	Bolt, 1 1/2 - 6 x 6 1/2, G8, HHCS, Zinc
6	1	00049777	Wing, Moldboard Assembly, 8', Trip Edge, (See page 39)
	1	00049778	Wing, Moldboard Assembly, 9', Trip Edge, (See page 39)
	1	00049779	Wing, Moldboard Assembly, 10', Trip Edge, (See page 39)
	1	00049780	Wing, Moldboard Assembly, 11', Trip Edge, (See page 39)
	1	00049781	Wing, Moldboard Assembly, 12', Trip Edge, (See page 39)
7	1	00039725	Bracket, LPA, Wing Mount (See page 46)
8	1	01230940	Wing Mount, Left Rear (See page 48)
9	1	---	Cutting Edge Kit, 8', 5/8 x 8, Trip Edge (See page 40)
	1	---	Cutting Edge Kit, 9', 5/8 x 8, Trip Edge (See page 40)
	1	---	Cutting Edge Kit, 10', 5/8 x 8, Trip Edge (See page 40)
	1	---	Cutting Edge Kit, 11', 5/8 x 8, Trip Edge (See page 40)
	1	---	Cutting Edge Kit, 12', 5/8 x 8, Trip Edge (See page 40)
10	2	00038868	Pipe, 2 SCH 80 x 42

WING, 8'-12', 316, TRIP EDGE, LEFT, CARBIDE, STRAIGHT

ITEM	QTY	PART #	DESCRIPTION
1	1	00037128	Rectangular Tube, 7 x 5 x 3/8 x 72
2	1	00016262	Front Wing Post Assembly (See page 30-31)
3	1	01130616	Mounting Block, Standard
4	1	01130460	Mounting Box, Single Function, w/ Bolts, Nuts (See page 50)
5	1	01130620	Bolt, 1 1/2 - 6 x 6 1/2, G8, HHCS, Zinc
6	1	00049777	Wing, Moldboard Assembly, 8', Trip Edge, L, 316 (See page 39)
	1	00049778	Wing, Moldboard Assembly, 9', Trip Edge, L, 316 (See page 39)
	1	00049779	Wing, Moldboard Assembly, 10', Trip Edge, L, 316 (See page 39)
	1	00049780	Wing, Moldboard Assembly, 11', Trip Edge, L, 316 (See page 39)
	1	00049781	Wing, Moldboard Assembly, 12', Trip Edge, L, 316 (See page 39)
7	1	00039725	Bracket, LPA, Wing Mount (See page 46)
8	1	01230940	Wing Mount, Left Rear (See page 38)
9	1	---	Cutting Edge Kit, 8', 3/4 x 6, Carbide (See page 41)
	1	---	Cutting Edge Kit, 9', 3/4 x 6, Carbide (See page 41)
	1	---	Cutting Edge Kit, 10', 3/4 x 6, Carbide (See page 41)
	1	---	Cutting Edge Kit, 11', 3/4 x 6, Carbide (See page 41)
	1	---	Cutting Edge Kit, 12', 3/4 x 6, Carbide (See page 41)
10	2	00038868	Pipe, 2 SCH 80 x 42

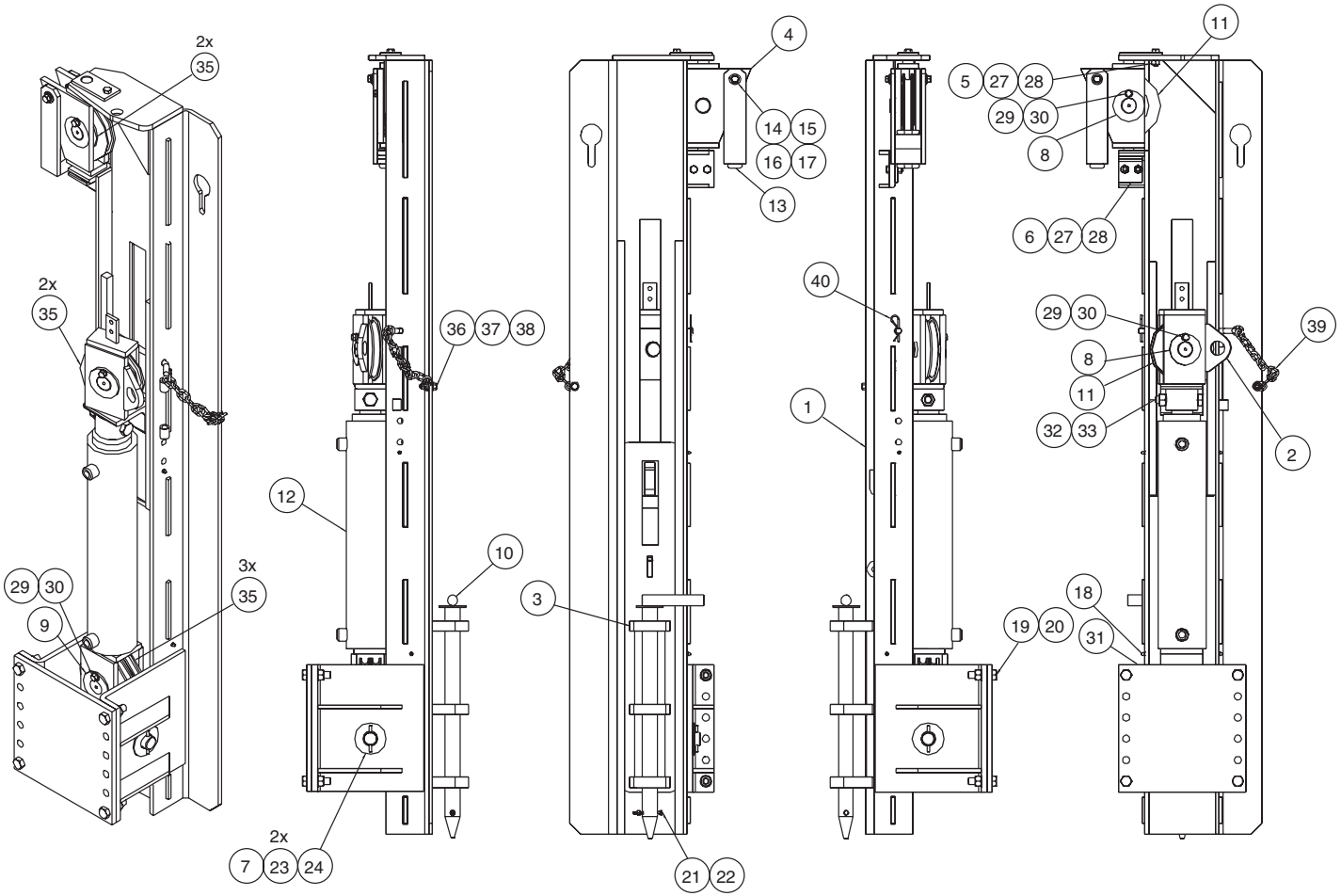
00016214 WING POST ASSEMBLY



00016214 WING POST ASSEMBLY, RHFR, CABLE

ITEM	QTY	PART #	DESCRIPTION
1	1	00071941	Post Weldment, RHFR, Cable
2	1	01130449	Slide Weldment, Cylinder
3	1	00010637	Slide, Front Master
4	1	01130445	Swivel Pully Weldment
5	1	01130420	Swivel Pully Top Pin
6	1	01130430	Swivel Pully Lower Pin
7	1	01130705	Cylinder Pin
8	2	01130396	Swivel Pully Pin Weldment
9	1	01130453	Cylinder Pin
10	1	01130613	Block Attachment Pin
11	4	05034009	Pully, 6" x 1 3/8" w/Brass
12	1	05002135	Cylinder, 4 x 16.81, DA (See page 52)
13	1	01130440	Cable Guide Weldment
14	2	00030181	Pipe, 1/2 SCH 40 x 1/2
15	2	05021309	Washer, 1/2, Flat, Zinc
16	2	05021366	Washer, 7/16, Lock Zinc
17	2	05010667	Bolt, 7/16 - 14 x 1 1/4, G8, HHCS, Zinc
18	5	05050288	Grease Zerk, 1/4 - 28
19	12	05010740	Bolt, 5/8 - 11 x 2 1/4, G8, HHCS, Zinc
20	12	05020837	Nut, 5/8 - 11, GC, Top Lock, C&W
21	1	05010597	Bolt, 1/4 - 20 x 2, G8, HHCS, Zinc
22	1	05020899	Nut, 1/4-20, Top Lock, Zinc
23	2	05021316	Washer, 1 1/4, Flat, Zinc
24	2	05022007	Pin, 1/4-2 1/2, Cotter
25	4	05051000	Clamp, Cable, 1/2" Maleable Iron
26	2	05050097	Thimble, Cable, For 1/2" Cable
27	3	05010667	Bolt, 7/16 - 14 x 1 1/4, G8, HHCS, Zinc
28	3	05020985	Nut, 7/16 - 14, Top Lock, Zinc
29	3	05010641	Bolt, 3/8 - 16 x 1, G8, HHCS, Zinc
30	3	05021365	Washer, 3/8, Lock, Zinc
31	1	01130703-B	Mounting Plate
32	1	05010772	Bolt, 3/4 -10 x4, G8, HHCS, Zinc
33	1	05020849	Nut, 3/4 -10, GC, Top Lock ,C&W
34	1	00031718	Cable, 1/2 Fiber Core x 28' (Not Shown)
35	7	05021318	Washer, 1 1/2, Flat, Zinc
36	1	05010644	Bolt, 3/8-16 x 1 1/4, G8, HHCS, Zinc
37	2	05021307	Washer, 3/8, Flat, Zinc
38	1	05020898	Nut, 3/8-16, GC, Top Lock, C&W
39	1	00085245	Pin Weldment, Safety
40	1	05022035	Pin, #11, Hair, Zinc

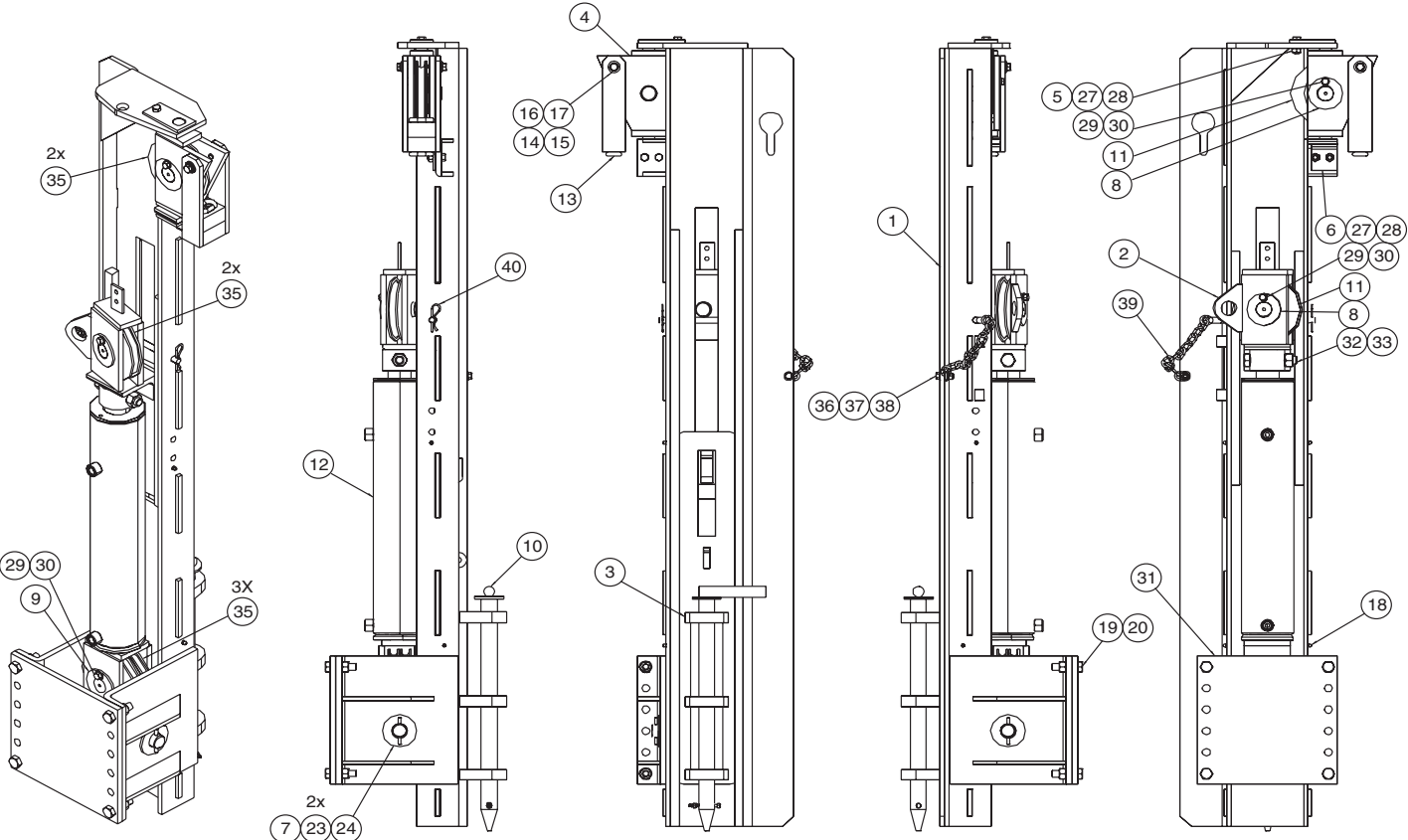
00016262 WING POST ASSEMBLY, LHFR, CABLE



00016262 WING POST ASSEMBLY, LHFR, CABLE

ITEM	QTY	PART #	DESCRIPTION
1	1	00071953	Post Weldment,
2	1	00056798	Slide Weldment, Cylinder
3	1	00010637	Slide, Front Master
4	1	01130445	Swivel Pully Weldment
5	1	01130420	Swivel Pully Top Pin
6	1	00073499	Swivel Pully Lower Pin
7	1	01130705	Cylinder Pin
8	2	01130396	Swivel Pully Pin Weldment
9	1	01130453	Cylinder Pin
10	1	01130613	Block Attachment Pin
11	4	05034009	Pully, 6" x 1 $\frac{3}{8}$ " w/Brass
12	1	05002135	Cylinder, 4 x 16.81, DA (See page 52)
13	1	01130440	Cable Guide Weldment
14	2	00030181	Pipe, $\frac{1}{2}$ SCH 40 x $\frac{1}{2}$
15	2	05021309	Washer, $\frac{1}{2}$, Flat, Zinc
16	2	05021366	Washer, $\frac{7}{16}$, Lock Zinc
17	2	05010667	Bolt, $\frac{7}{16}$ - 14 x 1 $\frac{1}{4}$, G8, HHCS, Zinc
18	5	05050288	Grease Zerk, $\frac{1}{4}$ - 28
19	12	05010740	Bolt, $\frac{5}{8}$ - 11 x 2 $\frac{1}{4}$, G8, HHCS, Zinc
20	12	05020837	Nut, $\frac{5}{8}$ - 11, GC, Top Lock, C&W
21	1	05010597	Bolt, $\frac{1}{4}$ - 20 x 2, G8, HHCS, Zinc
22	1	05020899	Nut, $\frac{1}{4}$ -20, Top Lock, Zinc
23	2	05021316	Washer, 1 $\frac{1}{4}$, Flat, Zinc
24	2	05022007	Pin, $\frac{1}{4}$ -2 $\frac{1}{2}$, Cotter
25	4	05051000	Clamp, Cable, $\frac{1}{2}$ " Maleable Iron
26	2	05050097	Thimble, Cable, For $\frac{1}{2}$ " Cable
27	3	05010667	Bolt, $\frac{7}{16}$ - 14 x 1 $\frac{1}{4}$, G8, HHCS, Zinc
28	3	05020985	Nut, $\frac{7}{16}$ - 14, Top Lock, Zinc
29	3	05010641	Bolt, $\frac{3}{8}$ - 16 x 1, G8, HHCS, Zinc
30	3	05021365	Washer, $\frac{3}{8}$, Lock, Zinc
31	1	01130703-B	Mounting Plate
32	1	05010772	Bolt, $\frac{3}{4}$ -10 x4, G8, HHCS, Zinc
33	1	05020849	Nut, $\frac{3}{4}$ -10, GC, Top Lock ,C&W
34	1	00031718	Cable, $\frac{1}{2}$ Fiber Core x 28' (Not Shown)
35	7	05021318	Washer, 1 $\frac{1}{2}$, Flat, Zinc
36	1	05010644	Bolt, $\frac{3}{8}$ -16 x 1 $\frac{1}{4}$, G8, HHCS, Zinc
37	2	05021307	Washer, $\frac{3}{8}$, Flat, Zinc
38	1	05020898	Nut, $\frac{3}{8}$ -16, Flat, Zinc
39	1	00085245	Pin Weldment, Safety, Wing Post
40	1	05022035	Pin, #11, Hair, Zinc

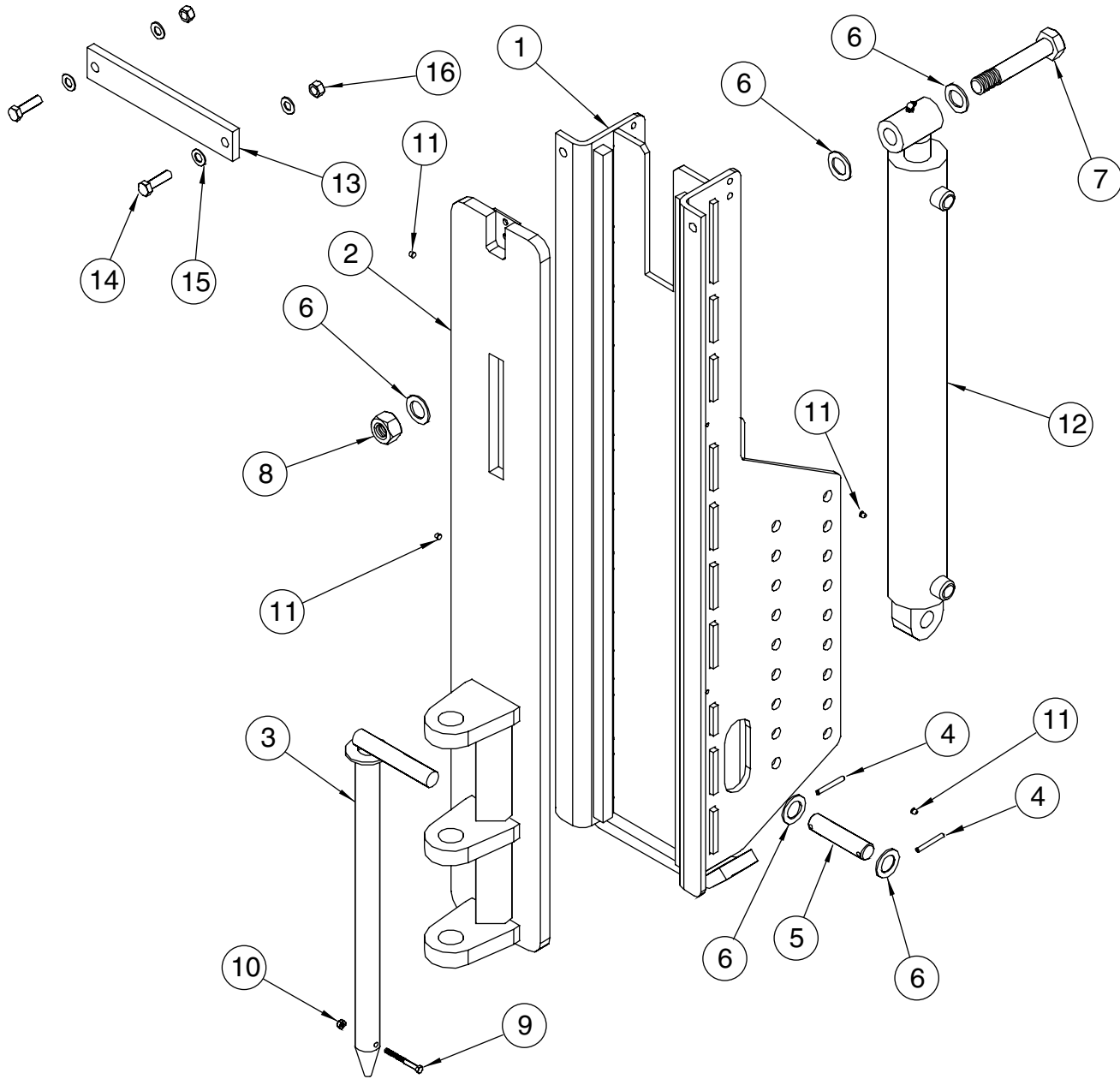
00014699 WING POST ASSEMBLY, RHFR, PATROL 15.813 DECELL



00014699 WING POST ASSEMBLY, RHFR, PATROL 15.813, DECELL

ITEM	QTY	PART #	DESCRIPTION
1	1	00071941	Post Weldment,
2	1	00099017	Slide Weldment, Cylinder
3	1	00010637	Slide, Front Master
4	1	01130445	Swivel Pully Weldment
5	1	01130420	Swivel Pully Top Pin
6	1	01130430	Swivel Pully Lower Pin
7	1	01130705	Cylinder Pin
8	2	01130396	Swivel Pully Pin Weldment
9	1	01130453	Cylinder Pin
10	1	01130613	Block Attachment Pin
11	4	05034009	Pully, 6" x 1 $\frac{3}{8}$ " w/Brass
12	1	05002806	Cylinder, 4 x 15.813, DA, Decell <i>(See page 53)</i>
13	1	01130440	Cable Guide Weldment
14	2	00030181	Pipe, $\frac{1}{2}$ SCH 40 x $\frac{1}{2}$
15	2	05021309	Washer, $\frac{1}{2}$, Flat, Zinc
16	2	05021366	Washer, $\frac{7}{16}$, Lock Zinc
17	2	05010667	Bolt, $\frac{7}{16}$ - 14 x 1 $\frac{1}{4}$, G8, HHCS, Zinc
18	5	05050288	Grease Zerk, $\frac{1}{4}$ - 28
19	12	05010740	Bolt, $\frac{5}{8}$ - 11 x 2 $\frac{1}{4}$, G8, HHCS, Zinc
20	12	05020837	Nut, $\frac{5}{8}$ - 11, GC, Top Lock, C&W
21	1	05010597	Bolt, $\frac{1}{4}$ - 20 x 2, G8, HHCS, Zinc
22	1	05020899	Nut, $\frac{1}{4}$ -20, Top Lock, Zinc
23	2	05021316	Washer, 1 $\frac{1}{4}$, Flat, Zinc
24	2	05022007	Pin, $\frac{1}{4}$ -2 $\frac{1}{2}$, Cotter
25	4	05051000	Clamp, Cable, $\frac{1}{2}$ " Maleable Iron
26	2	05050097	Thimble, Cable, For $\frac{1}{2}$ " Cable
27	3	05010667	Bolt, $\frac{7}{16}$ - 14 x 1 $\frac{1}{4}$, G8, HHCS, Zinc
28	3	05020985	Nut, $\frac{7}{16}$ - 14, Top Lock, Zinc
29	3	05010641	Bolt, $\frac{3}{8}$ - 16 x 1, G8, HHCS, Zinc
30	3	05021365	Washer, $\frac{3}{8}$, Lock, Zinc
31	1	01130703-B	Mounting Plate
32	1	05010772	Bolt, $\frac{3}{4}$ -10 x4, G8, HHCS, Zinc
33	1	05020849	Nut, $\frac{3}{4}$ -10, GC, Top Lock ,C&W
34	1	00031718	Cable, $\frac{1}{2}$ Fiber Core x 28' (Not Shown)
35	7	05021318	Washer, 1 $\frac{1}{2}$, Flat, Zinc
36	1	05010644	Bolt, $\frac{3}{8}$ -16 x 1 $\frac{1}{4}$, G8, HHCS, Zinc
37	2	05021307	Washer, $\frac{3}{8}$, Flat, Zinc
38	1	05020898	Nut, $\frac{3}{8}$ -16, Flat, Zinc
39	1	00085245	Pin Weldment, Safety, Wing Post
40	1	05022035	Pin, #11, Hair, Zinc

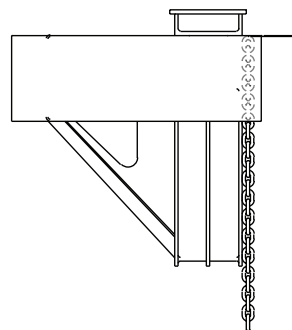
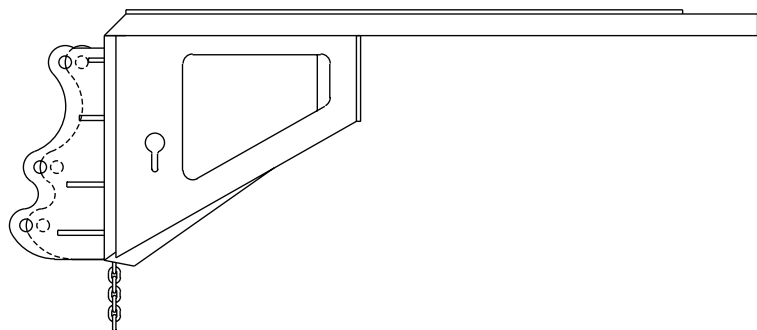
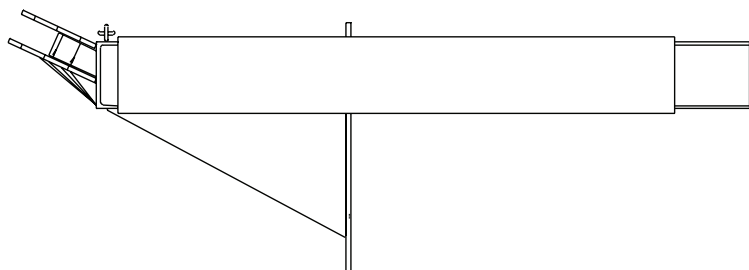
00016331 WING POST ASSEMBLY, TRIM-LINE



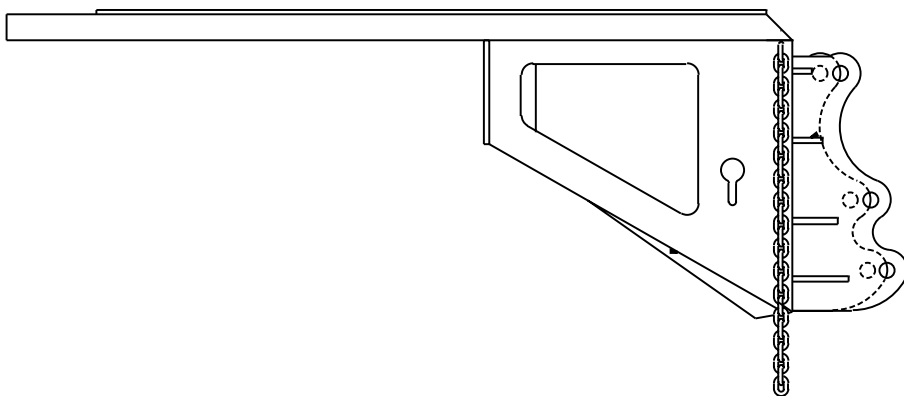
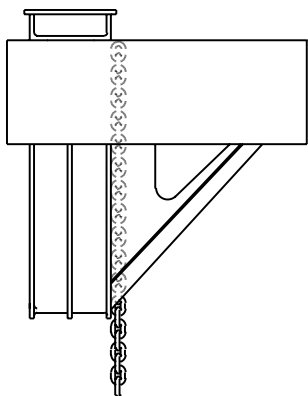
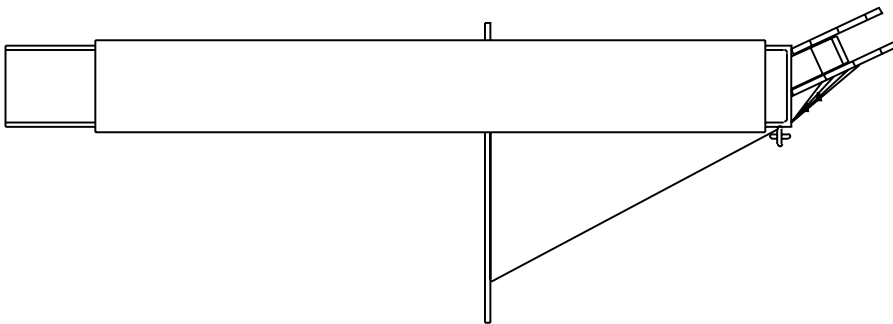
00016331 WING POST ASSEMBLY, TRIM-LINE

ITEM	QTY	PART #	DESCRIPTION
1	1	00073306	Wing Post Weldment, RHFR, Patrol, DF, Trim-Line
2	1	00073313	Slider Weldment, Post, Trim-Line
3	1	01130613	Pin Weldment
4	2	05022026	Pin, ¼ x 20A, Roll
5	1	05022040	Pin, 1 x 4¼, No Head
6	5	05021314	Washer, 1, Flat, Zinc
7	1	05010821	Bolt, 1-8 x 5½, G8, HHCS, Zinc
8	1	05020834	Nut, 1-8, GC, Top Lock, C&W
9	1	05010599	Bolt, ¼-20 x 2½, G8, HHCS, Zinc
10	1	05020899	Nut, ¼-20, Gc, Top Lock, C&W
11	4	05050288	Grease Zerk, ¼-28, Straight Threaded
12	1	05002755	Cylinder, 3 x 24, DA, Wing Toe, Trim-Line Post <i>(See page 52)</i>
13	1	00014625	Stiffener Bar, Bolt-On
14	2	05010692	Bolt, ½-13 x 1¾, G8, HHCS, Zinc
15	4	05021005	Washer, ½, Mil-Carb, Zinc
16	2	05020847	Nut, ½-13, Toplock, C&W

01320940 WING MOUNT, LEFT REAR



**01131100 WING MOUNT, RIGHT REAR
BRACKET, WELDMENT, MOUNTING, RWM-R**



WING, MOLDBOARD ASSEMBLY, TRIP EDGE

8' MOLDBOARD ASSEMBLY

ITEM	QTY	PART #	DESCRIPTION
1	1	00038167	Wing, Moldboard Weldment
	1	00030185	Wing, Moldboard Weldment, Straight
2	2	00035232	Trip Edge Section, 4'
3	2	00035230	Pivot Rod Weldment, 46%

9' MOLDBOARD ASSEMBLY

ITEM	QTY	PART #	DESCRIPTION
1	1	00038168	Wing, Moldboard Weldment
	1	00030186	Wing, Moldboard Weldment, Straight
2	1	00035232	Trip Edge Section, 4'
3	1	00037115	Trip Edge Section, 5'
4	1	00035230	Pivot Rod Weldment, 46%
5	1	00037116	Pivot Rod Weldment, 58%

10' MOLDBOARD ASSEMBLY

ITEM	QTY	PART #	DESCRIPTION
1	1	00038169	Wing, Moldboard Weldment
	1	00030187	Wing, Moldboard Weldment, Straight
2	2	00037115	Trip Edge Section, 5'
3	2	00037116	Pivot Rod Weldment, 58%
4	2	05022039	Pin, $\frac{5}{16}$ x 2, Roll

11' MOLDBOARD ASSEMBLY

ITEM	QTY	PART #	DESCRIPTION
1	1	00038170	Wing, Moldboard Weldment
	1	00030188	Wing, Moldboard Weldment, Straight
2	1	00037115	Trip Edge Section, 5'
3	1	00038163	Trip Edge Section, 6'
4	1	00037116	Pivot Rod Weldment, 58%
5	1	00038164	Pivot Rod Weldment, 70%
6	2	05022039	Pin, $\frac{5}{16}$ x 2, Roll

12' MOLDBOARD ASSEMBLY

ITEM	QTY	PART #	DESCRIPTION
1	1	00038171	Wing, Moldboard Weldment
	1	00030189	Wing, Moldboard Weldment, Straight
2	1	00038163	Trip Edge Section, 6'
3	1	00038166	Trip Edge Section, 6', LH
4	2	00038164	Pivot Rod Weldment, 70%
5	2	05022039	Pin, $\frac{5}{16}$ x 2, Roll

WING, MOLDBOARD ASSEMBLY, TRIP EDGE, LEFT

8' MOLDBOARD ASSEMBLY

ITEM	QTY	PART #	DESCRIPTION
1	1	00049739	Wing, Moldboard Weldment
	1	00049729	Wing, Moldboard Weldment, Straight
2	2	00035232	Trip Edge Section, 4'
3	2	00035230	Pivot Rod Weldment, 46 $\frac{5}{8}$
4	2	05022039	Pin, $\frac{5}{16}$ x 2, Roll

9' MOLDBOARD ASSEMBLY

ITEM	QTY	PART #	DESCRIPTION
1	1	00049740	Wing, Moldboard Weldment
	1	00049730	Wing, Moldboard Weldment, Straight
2	1	00035232	Trip Edge Section, 4'
3	1	00037115	Trip Edge Section, 5'
4	1	00035230	Pivot Rod Weldment, 46 $\frac{5}{8}$
5	1	00037116	Pivot Rod Weldment, 58 $\frac{5}{8}$
6	2	05022039	Pin, $\frac{5}{16}$ x 2, Roll

10' MOLDBOARD ASSEMBLY

ITEM	QTY	PART #	DESCRIPTION
1	1	00049741	Wing, Moldboard Weldment
	1	00049731	Wing, Moldboard Weldment, Straight
2	2	00037115	Trip Edge Section, 5'
3	2	00037116	Pivot Rod Weldment, 58 $\frac{5}{8}$
4	2	05022039	Pin, $\frac{5}{16}$ x 2, Roll

11' MOLDBOARD ASSEMBLY

ITEM	QTY	PART #	DESCRIPTION
1	1	00049742	Wing, Moldboard Weldment
	1	00049732	Wing, Moldboard Weldment, Straight
2	1	00037115	Trip Edge Section, 5'
3	1	00038163	Trip Edge Section, 6'
4	1	00037116	Pivot Rod Weldment, 58 $\frac{5}{8}$
5	1	00038164	Pivot Rod Weldment, 70 $\frac{5}{8}$
6	2	05022039	Pin, $\frac{5}{16}$ x 2, Roll

12' MOLDBOARD ASSEMBLY

ITEM	QTY	PART #	DESCRIPTION
1	1	00049743	Wing, Moldboard Weldment
	1	00049733	Wing Moldboard Weldment, Straight
2	1	00038163	Trip Edge Section, 6'
3	1	00038166	Trip Edge Section, 6', LH
4	2	00038164	Pivot Rod Weldment, 70 $\frac{5}{8}$
5	2	05022039	Pin, $\frac{5}{16}$ x 2, Roll

CUTTING EDGE KITS, 5/8"

CUTTING EDGE KIT, 8', 5/8" X 8

ITEM	QTY	PART #	DESCRIPTION
1	1	05031075	Cutting Edge, 5/8" x 8 x 8
2	10	05014551	Bolt, 5/8" - 11 x 2 1/2", G8, Dome Head, Plain
3	10	05021383	Washer, 5/8", Lock, Heavy, Zinc
4	10	05020270	Nut, 5/8" - 11, G8, Hex, Zinc

CUTTING EDGE KIT, 9', 5/8" X 8

ITEM	QTY	PART #	DESCRIPTION
1	1	05031076	Cutting Edge, 5/8" x 8 x 9
2	11	05014551	Bolt, 5/8" - 11 x 2 1/2", G8, Dome Head, Plain
3	11	05021383	Washer, 5/8", Lock, Heavy, Zinc
4	11	05020270	Nut, 5/8" - 11, G8, Hex, Zinc

CUTTING EDGE KIT, 10', 5/8" X 8

ITEM	QTY	PART #	DESCRIPTION
1	1	05031012	Cutting Edge, 5/8" x 8 x 10
2	12	05014551	Bolt, 5/8" - 11 x 2 1/2", G8, Dome Head, Plain
3	12	05021383	Washer, 5/8", Lock, Heavy, Zinc
4	12	05020270	Nut, 5/8" - 11, G8, Hex, Zinc

CUTTING EDGE KIT, 11', 5/8" X 8

ITEM	QTY	PART #	DESCRIPTION
1	1	05031013	Cutting Edge, 5/8" x 8 x 11
2	13	05014551	Bolt, 5/8" - 11 x 2 1/2", G8, Dome Head, Plain
3	13	05021383	Washer, 5/8", Lock, Heavy, Zinc
4	13	05020270	Nut, 5/8" - 11, G8, Hex, Zinc

CUTTING EDGE KIT, 12', 5/8" X 8

ITEM	QTY	PART #	DESCRIPTION
1	1	05031014	Cutting Edge, 5/8" x 8 x 12
2	14	05014551	Bolt, 5/8" - 11 x 2 1/2", G8, Dome Head, Plain
3	14	05021383	Washer, 5/8", Lock, Heavy, Zinc
4	14	05020270	Nut, 5/8" - 11, G8, Hex, Zinc

CUTTING EDGE KITS, ¾ CARBIDE

CUTTING EDGE KIT, 8', ¾" X 6, CARBIDE

ITEM	QTY	PART #	DESCRIPTION
1	2	05031083	Cutting Edge, ¾ x 6 x 4, Carbide
2	12	05014555	Bolt, ⅝ - 11 x 3 ½, G8, Dome Head, Plain
3	12	05021383	Washer, ⅝, Lock, Heavy, Zinc
4	12	05020270	Nut, ⅝ - 11, G8, Hex, Zinc
5	1	05031099	Cutting Edge, ½" x 6 x 8

CUTTING EDGE KIT, 9', ¾" X 6, CARBIDE

ITEM	QTY	PART #	DESCRIPTION
1	3	05031082	Cutting Edge, ¾ x 6 x 3, Carbide
2	15	05014555	Bolt, ⅝ - 11 x 3 ½, G8, Dome Head, Plain
3	15	05021383	Washer, ⅝, Lock, Heavy, Zinc
4	15	05020270	Nut, ⅝ - 11, G8, Hex, Zinc
5	1	05031033	Cutting Edge, ½" x 6 x 9

CUTTING EDGE KIT, 10', ¾" X 6, CARBIDE

ITEM	QTY	PART #	DESCRIPTION
1	1	05031083	Cutting Edge, ¾ x 6 x 4, Carbide
2	2	05031082	Cutting Edge, ¾ x 6 x 3, Carbide
3	16	05014555	Bolt, ⅝ - 11 x 3 ½, G8, Dome Head, Plain
4	16	05021383	Washer, ⅝, Lock, Heavy, Zinc
5	16	05020270	Nut, ⅝ - 11, G8, Hex, Zinc
6	1	05031030	Cutting Edge, ½" x 6 x 10

CUTTING EDGE KIT, 11', ¾" X 6, CARBIDE

ITEM	QTY	PART #	DESCRIPTION
1	2	05031083	Cutting Edge, ¾ x 6 x 4, Carbide
2	1	05031082	Cutting Edge, ¾ x 6 x 3, Carbide
3	17	05014555	Bolt, ⅝ - 11 x 3 ½, G8, Dome Head, Plain
4	17	05021383	Washer, ⅝, Lock, Heavy, Zinc
5	17	05020270	Nut, ⅝ - 11, G8, Hex, Zinc
6	1	05031031	Cutting Edge, ½" x 6 x 11

CUTTING EDGE KIT, 12', ¾" X 6, CARBIDE

ITEM	QTY	PART #	DESCRIPTION
1	3	05031083	Cutting Edge, ¾ x 6 x 4, Carbide
2	18	05014555	Bolt, ⅝ - 11 x 3 ½, G8, Dome Head, Plain
3	18	05021383	Washer, ⅝, Lock, Heavy, Zinc
4	18	05020270	Nut, ⅝ - 11, G8, Hex, Zinc
5	1	05031032	Cutting Edge, ½" x 6 x 12

CUTTING EDGE KITS, TRIP EDGE, 5/8"

CUTTING EDGE KIT, 8', 5/8" X 8, TRIP EDGE

ITEM	QTY	PART #	DESCRIPTION
1	2	05031070	Cutting Edge, 5/8" x 8 x 4
2	12	05014551	Bolt, 5/8" - 11 x 2 1/2, G8, Dome Head, Plain
3	12	05021383	Washer, 5/8", Lock, Heavy, Zinc
4	12	05020270	Nut, 5/8" - 11, G8, Hex, Zinc

CUTTING EDGE KIT, 9', 5/8" X 8, TRIP EDGE

ITEM	QTY	PART #	DESCRIPTION
1	1	05031071	Cutting Edge, 5/8" x 8 x 5
2	1	05031070	Cutting Edge, 5/8" x 8 x 4
3	13	05014551	Bolt, 5/8" - 11 x 2 1/2, G8, Dome Head, Plain
4	13	05021383	Washer, 5/8", Lock, Heavy, Zinc
5	13	05020270	Nut, 5/8" - 11, G8, Hex, Zinc

CUTTING EDGE KIT, 10', 5/8" X 8, TRIP EDGE

ITEM	QTY	PART #	DESCRIPTION
1	2	05031071	Cutting Edge, 5/8" x 8 x 5
2	14	05014551	Bolt, 5/8" - 11 x 2 1/2, G8, Dome Head, Plain
3	14	05021383	Washer, 5/8", Lock, Heavy, Zinc
4	14	05020270	Nut, 5/8" - 11, G8, Hex, Zinc

CUTTING EDGE KIT, 11', 5/8" X 8, TRIP EDGE

ITEM	QTY	PART #	DESCRIPTION
1	1	05031072	Cutting Edge, 5/8" x 8 x 6
2	1	05031071	Cutting Edge, 5/8" x 8 x 5
3	15	05014551	Bolt, 5/8" - 11 x 2 1/2, G8, Dome Head, Plain
4	15	05021383	Washer, 5/8", Lock, Heavy, Zinc
5	15	05020270	Nut, 5/8" - 11, G8, Hex, Zinc

CUTTING EDGE KIT, 12', 5/8" X 8, TRIP EDGE

ITEM	QTY	PART #	DESCRIPTION
1	2	05031072	Cutting Edge, 5/8" x 8 x 6
2	16	05014551	Bolt, 5/8" - 11 x 2 1/2, G8, Dome Head, Plain
3	16	05021383	Washer, 5/8", Lock, Heavy, Zinc
4	16	05020270	Nut, 5/8" - 11, G8, Hex, Zinc

CUTTING EDGE KITS, CARBIDE, TRIP EDGE, ¾

CUTTING EDGE KIT, 8', ¾" X 6, CARBIDE, TRIP EDGE

ITEM	QTY	PART #	DESCRIPTION
1	2	05031083	Cutting Edge, ¾ x 6 x 4, Carbide
2	12	05014555	Bolt, ⅝ - 11 x 3 ½, G8, Dome Head, Plain
3	12	05021383	Washer, ⅝, Lock, Heavy, Zinc
4	12	05020270	Nut, ⅝ - 11, G8, Hex, Zinc
5	2	05031009	Cutting Edge, ½" x 6 x 4

CUTTING EDGE KIT, 9', ¾" X 6, CARBIDE, TRIP EDGE

ITEM	QTY	PART #	DESCRIPTION
1	1	05031083	Cutting Edge, ¾ x 6 x 4, Carbide
2	1	05031084	Cutting Edge, ¾ x 6 x 5, Carbide
3	13	05014555	Bolt, ⅝ - 11 x 3 ½, G8, Dome Head, Plain
4	13	05021383	Washer, ⅝, Lock, Heavy, Zinc
5	13	05020270	Nut, ⅝ - 11, G8, Hex, Zinc
6	1	05031091	Cutting Edge, ½" x 6 x 5
7	1	05031009	Cutting Edge, ½"x 6 x 4

CUTTING EDGE KIT, 10', ¾" X 6, CARBIDE, TRIP EDGE

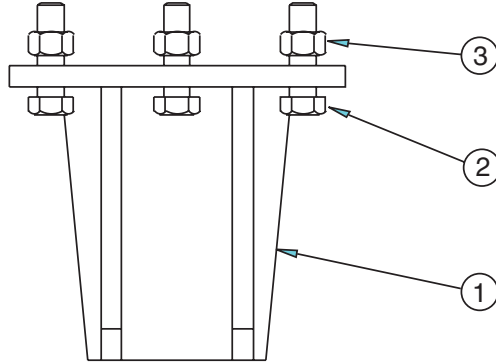
ITEM	QTY	PART #	DESCRIPTION
1	2	05031084	Cutting Edge, ¾ x 6 x 5, Carbide
2	14	05014555	Bolt, ⅝ - 11 x 3 ½, G8, Dome Head, Plain
3	14	05021383	Washer, ⅝, Lock, Heavy, Zinc
4	14	05020270	Nut, ⅝ - 11, G8, Hex, Zinc
5	2	05031091	Cutting Edge, ½" x 6 x 5

CUTTING EDGE KIT, 11', ¾" X 6, CARBIDE, TRIP EDGE

ITEM	QTY	PART #	DESCRIPTION
1	1	05031084	Cutting Edge, ¾ x 6 x 5, Carbide
2	2	05031082	Cutting Edge, ¾ x 6 x 3, Carbide
3	17	05014555	Bolt, ⅝ - 11 x 3 ½, G8, Dome Head, Plain
4	17	05021383	Washer, ⅝, Lock, Heavy, Zinc
5	17	05020270	Nut, ⅝ - 11, G8, Hex, Zinc
6	1	05031091	Cutting Edge, ½" x 6 x 5
7	2	05031008	Cutting Edge, ½" x 6 x 3

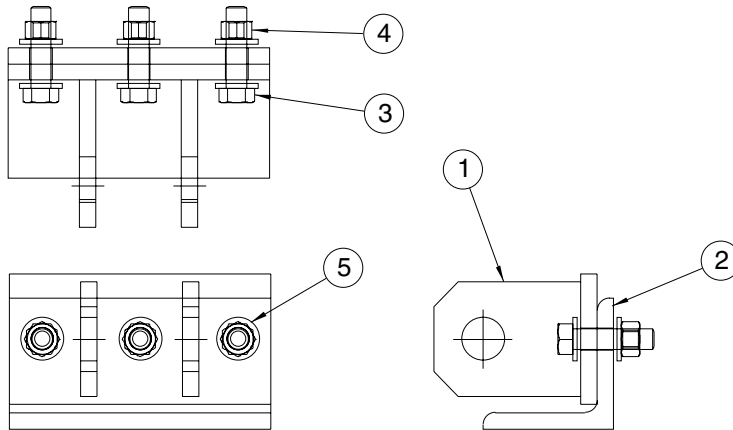
CUTTING EDGE KIT, 12', ¾" X 6, CARBIDE, TRIP EDGE

ITEM	QTY	PART #	DESCRIPTION
1	4	05031082	Cutting Edge, ¾ x 6 x 3, Carbide
2	20	05014555	Bolt, ⅝ - 11 x 3 ½, G8, Dome Head, Plain
3	20	05021383	Washer, ⅝, Lock, Heavy, Zinc
4	20	05020270	Nut, ⅝ - 11, G8, Hex, Zinc
5	4	05031008	Cutting Edge, ½" x 6 x 3



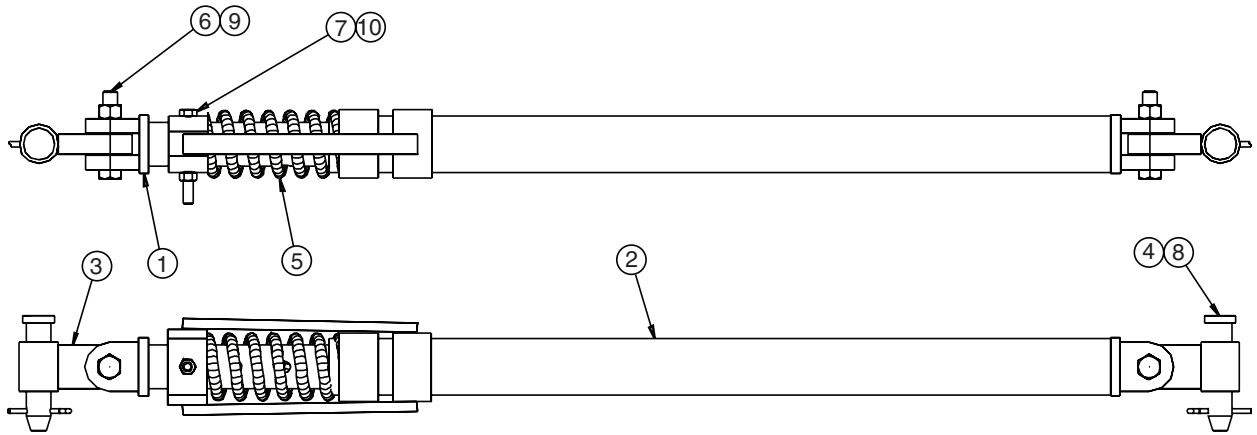
00039724 BRACKET PUSH ARM, WING MOUNT

ITEM	QTY	PART #	DESCRIPTION
1	1	01130962	Bracket Weldment, Upper Push Arm
2	3	05010741	Bolt, $\frac{5}{8}$ - 11 x 2 $\frac{1}{2}$, G8,HHCS, Zinc
3	3	05020837	Nut, $\frac{5}{8}$ - 11, GC, Top Lock, C&W
4	6	05021017	Washer, $\frac{5}{8}$, Flat, Mil-Carb, SAE



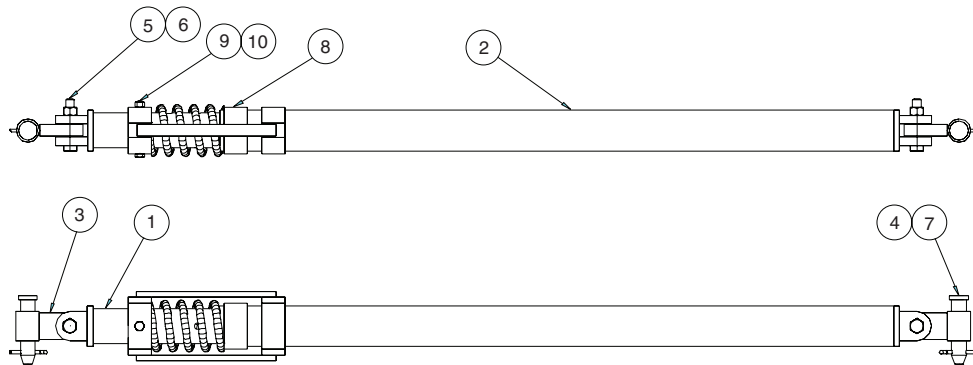
00039725 BRACKET, UPPER PUSH ARM, WING MOUNT

ITEM	QTY	PART #	DESCRIPTION
1	1	01130958	Bracket Weldment, Lower Push Arm
2	1	01130961	Angle Detail, Lower Push Arm
3	3	05010741	Bolt, $\frac{5}{8}$ - 11 x 2 $\frac{1}{2}$, G8,HHCS, Zinc
4	3	05020837	Nut, $\frac{5}{8}$ - 11, GC, Top Lock, C&W
5	6	05021017	Washer, $\frac{5}{8}$, Flat, Mil-Carb, SAE



01130974 PUSHARM ASSEMBLY, LPA - UPA, 2½ SCH 80, 53¼

ITEM	QTY	PART #	DESCRIPTION
1	1	01130942	Rod Weldment, Inner,
2	1	01130944	Pipe Assembly, Outer
3	2	01130925	Swivel Connector Weldment
4	1	05035040	Spring, Compression, LPA - UPA - STD
5	2	05022089	Pin, 1¼ x 5½, Flat, Head
6	2	05010772	Bolt, ¾ - 10 x 4, G8, HHCS, Zinc
7	1	05010701	Bolt, ½ - 13 x 4, G8, HHCS, Zinc
8	2	05022006	Pin, ¼ x 2, Cotter
9	2	05020849	Nut, ¾ - 10, GCI, Top Lock, C&W
10	1	05020847	Nut, ½ - 13, GC, Top Lock, C&W



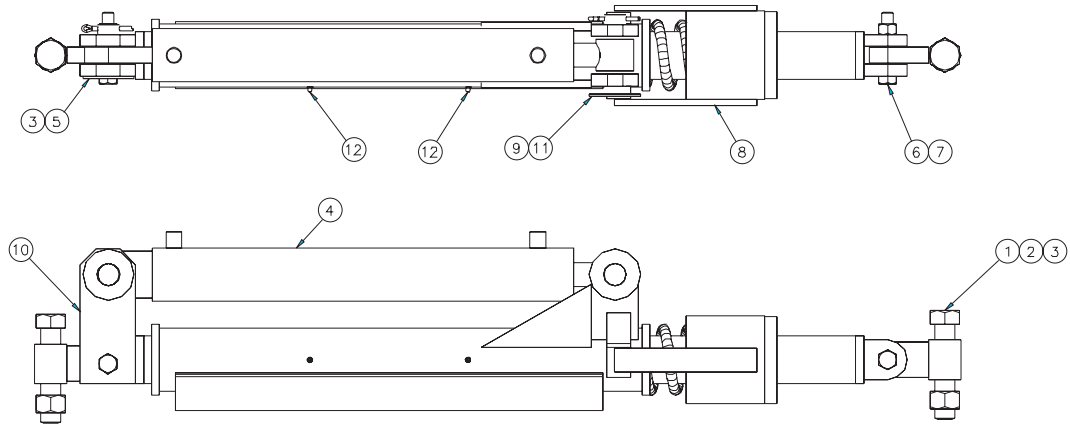
00011715 PUSHARM ASSEMBLY, LPA, 3 SCH 40 X 72⅝

ITEM	QTY	PART #	DESCRIPTION
1	1	00031737	Inner Push Arm Weldment
2	1	00031744	Outer Push Arm Weldment
3	2	01130925	Swivel Connector Weldment
4	2	05022089	Pin, 1¼ x 5½, Flat, Head
5	2	05010772	Bolt, ¾ - 10 x 4, G8, HHCS, Zinc
6	2	05020849	Nut, ¾ - 10, GCI, Top Lock, C&W
7	2	05022006	Pin, ¼ x 2, Cotter
8	1	05035039	Spring, Compression, 4 x 4
9	1	05020847	Nut, ½ - 13, GC, Top Lock, C&W
10	1	05010702	Bolt, ½ - 13 x 4½, G8, HHCS, Zinc



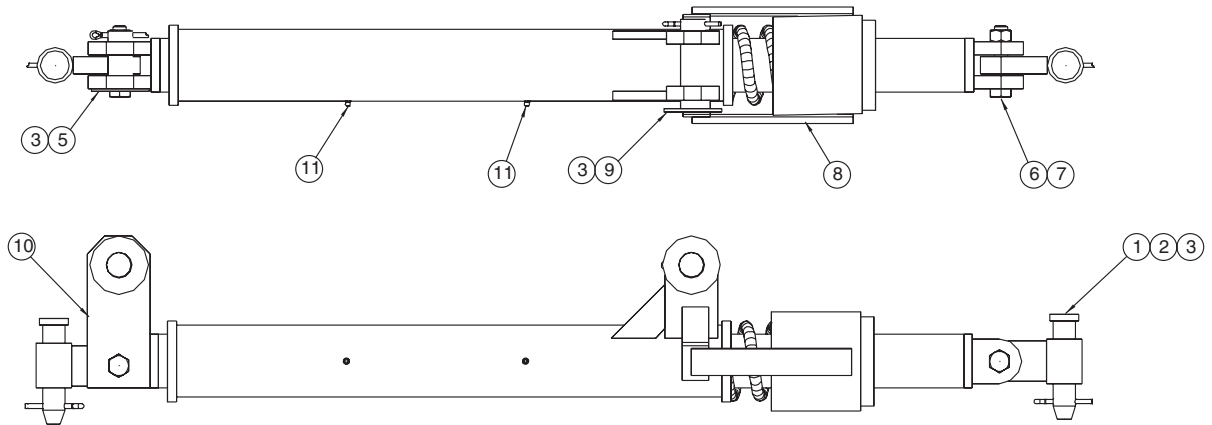
01130973 PUSHARM ASSEMBLY, UPA - FT, 2½ SCH 80, 58¼

ITEM	QTY	PART #	DESCRIPTION
1	1	01130921	Inner Rod Assembly
2	1	01130920	Pipe Assembly, Outer
3	1	01130926	Spring Mount Collar
4	2	01130925	Swivel Connector Weldment
5	2	05022089	Pin, 1¼ x 5½, Flat, Head
6	2	05010772	Bolt, ¾ - 10 x 4, G8, HHCS, Zinc
7	1	05010702	Bolt, ½ - 13 x 4½, G8, HHCS, Zinc
8	2	05020849	Nut, ¾ - 10, GCI, Top Lock, C&W
9	2	05022006	Pin, ¼ x 2, Cotter
10	1	05020847	Nut, ½ - 13, GC, Top Lock, C&W
11	1	05022136	Pin, ½ x 4½, 4" Grip Bent, Zinc
12	1	05050003	Grease Zerk, ½, NPT Straight
13	1	05022035	Pin, #11, Hair, Zinc



00012677 PUSHARM, LPA, HYD., W/ G8 BOLTS

ITEM	QTY	PART #	DESCRIPTION
1	2	01130925	Swivel Connector
2	2	05010856	Bolt, 1¼-7 x 6, G8, HHCS, Zinc
3	2	05020835	Nut, 1¼-7, GC, Top Lock, C&W
4	1	00036951	Cylinder Modification
5	1	00045327	Pin Weldment
6	2	05010770	Bolt, ¾-10 x 3½, G8, HHCS, Zinc
7	2	05020849	Nut, ¾-10, GC, Top Lock, C&W
8	1	00036952	Outer Pusharm Weldment
9	1	00045328	Pin Weldment
10	1	00036949	Inner Pusharm Weldment
11	2	0502006	Pin, ¼-2, Cotter, Zinc
12	2	05050003	Grease Zerk, ⅛-27 NPT, Straight

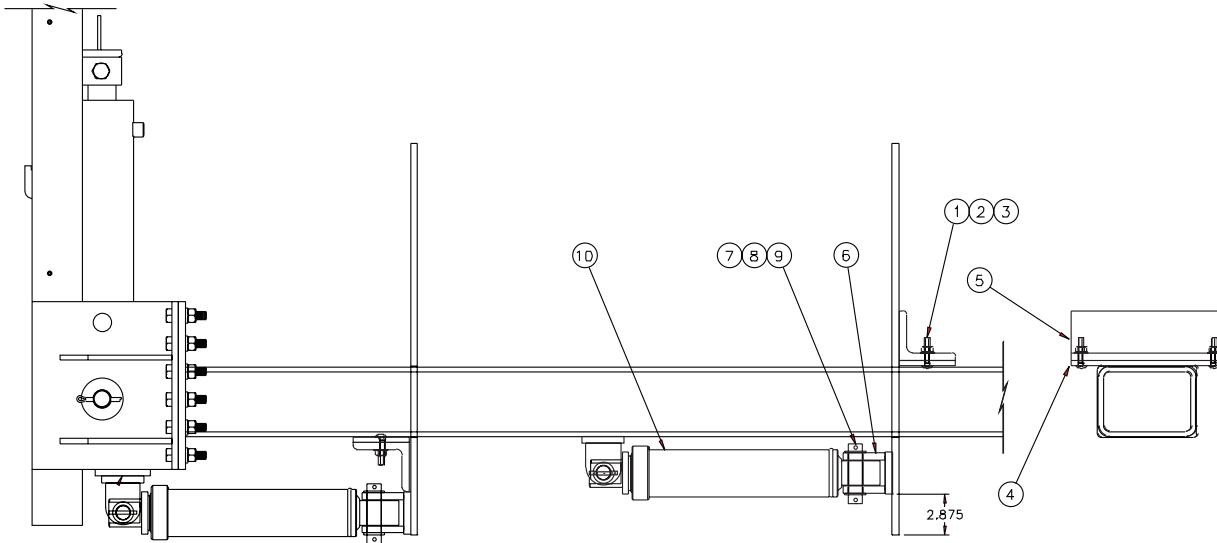


00036946 PUSHARM ASSEMBLY, OPA, 2 1/2 SCHED 80

ITEM	QTY	PART #	DESCRIPTION
1	2	01130925	Swivel Connector
2	2	05022089	Pin, Flat Head, 1¼ DIA x 5½
3	4	05022006	Pin, ¼ x 2, Cotter, Zinc
5	1	00045327	Pin Weldment
6	2	05010770	Bolt, ¾-10 x 3½, G8, HHCS, Zinc
7	2	05020849	Nut, ¾-10, GC, Top Lock, C&W
8	1	00036952	Outer Pusharm Weldment
9	1	00045328	Pin Weldment
10	1	00036949	Inner Pusharm Weldment
11	2	05050003	Grease Zerk, ⅛-27 NPT, Straight

(2) 00061742 SIDE PLATE KIT, STANDARD PATROL WING, PAIR

(2) 00000169 SIDE PLATE, WING, STANDARD, 28" X 18" W/CUTOUT



00030357 POWER SIDE KIT, WING POST

ITEM	QTY	PART #	DESCRIPTION
1	4	05013582	Bolt, $\frac{3}{8}$ - 16 x 2, G2, Carriage, Zinc
2	4	05021365	Washer, $\frac{3}{8}$, Lock, Zinc
3	4	05020266	Nut, $\frac{3}{8}$ - 16, G8, Hex, Zinc
4	2	00030360	Poly Bearing Surface
5	2	00030359	Power Slide Side Plate Angle
6	2	00030362	Cylinder Ear Weldment
7	2	05022040	Pin, No Head, 1 DIA x $4\frac{1}{4}$
8	4	05021202	Bushing, Machine, 1, 10 Gauge
9	4	05022026	Pin, $\frac{1}{4}$ x 2, Roll
10	1	05000000	Cylinder, 3 x 10, DA (See page 51)

SHOE KIT, SKID, WING, 5, 10°, MOLDBOARD, PAIR

ITEM	QTY	PART #	DESCRIPTION
1	2	05050220	Shoe, Moldboard Cast, 5" & 6"
2	4	05014558	Bolt, 5/8 - 11 x 4½, G8, Dome Head Plain
3	4	05021383	Washer, 5/8, Lock Heavy, Zinc
4	4	05020284	Nut, 5/8 - 11, G8, Hex, Plain

SHOE KIT, SKID, WING, 8 CE, 10°

ITEM	QTY	PART #	DESCRIPTION
1	1	05050221	Shoe, Moldboard Cast, 8"
2	2	05014558	Bolt, 5/8 - 11 x 4½, G8, Dome Head Plain
3	2	05021383	Washer, 5/8, Lock Heavy, Zinc
4	2	05020284	Nut, 5/8 - 11, G8, Hex, Plain

SHOE KIT, SKID, MOLDBOARD, 8 CE, 10°, WING & PLOW, PAIR

ITEM	QTY	PART #	DESCRIPTION
1	2	05050221	Shoe, Moldboard Cast, 8"
2	4	05014558	Bolt, 5/8 - 11 x 4½, G8, Dome Head Plain
3	4	05021383	Washer, 5/8, Lock Heavy, Zinc
4	4	05020284	Nut, 5/8 - 11, G8, Hex, Plain

GUARD KIT, CURB WRAP AROUND, 5/8 X 6

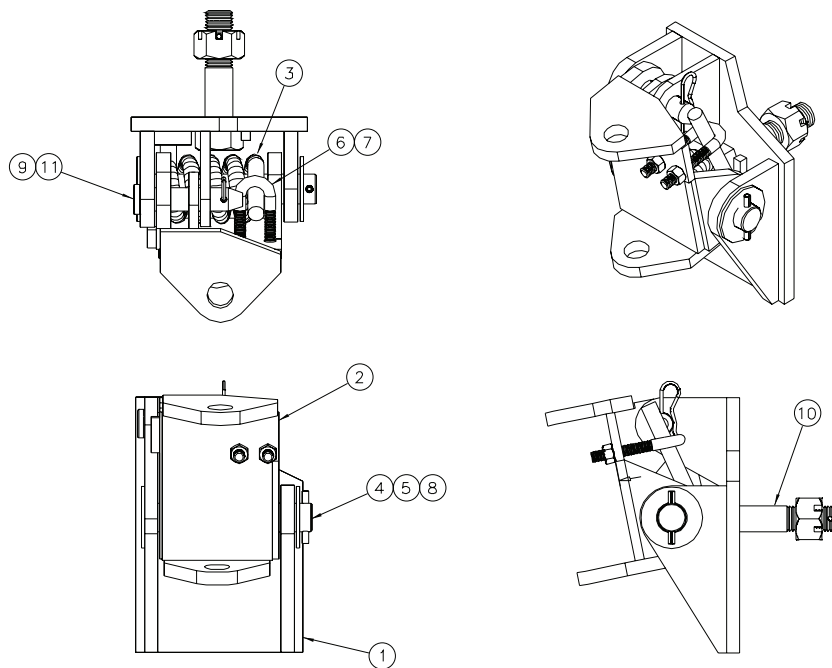
ITEM	QTY	PART #	DESCRIPTION
1	1	05050000	Guard, Curb, Wrap Around, 5/8 x 6
2	2	05014553	Bolt, 5/8 - 11 x 3, G8, Dome Head Plain
3	2	05021383	Washer, 5/8, Lock, Heavy, Zinc
4	2	05020284	Nut, 5/8 - 11, G8, Hex, Plain

STOP KIT, TOE

ITEM	QTY	PART #	DESCRIPTION
1	1	00030183	Chain, High Test
2	1	05050592	Clevis, Double

01130460 MOUNTING BOX

ITEM	QTY	PART #	DESCRIPTION
1	1	05050126	Shackle, 5/8, Screw Pin, Galvanized
2	4	05051418	Pipe Ball End, Weld in Ball
3	4	00039713	Angle, 4 x 3 x 1/2 x 7
4	2	01130706	Support Bar
5	4	05010755	Bolt, 5/8 - 11 x 8, G8, HHCS, Zinc
6	20	05010740	Bolt, 5/8 - 11 x 2 1/4, G8, HHCS, Zinc
7	24	05020837	Nut, 5/8 - 11, GC, Top Lock, C&W
8	1	05050094	Eye Grab Hook, 5/8
9	1	05022050	Pin, 1/4 x 2 1/4, Cotter
10	4	05010766	Bolt, 3/4 - 10 x 2 1/2, G8, HHCS, Zinc
11	4	05020849	Nut, 3/4 - 10, GC, Top Lock, C&W

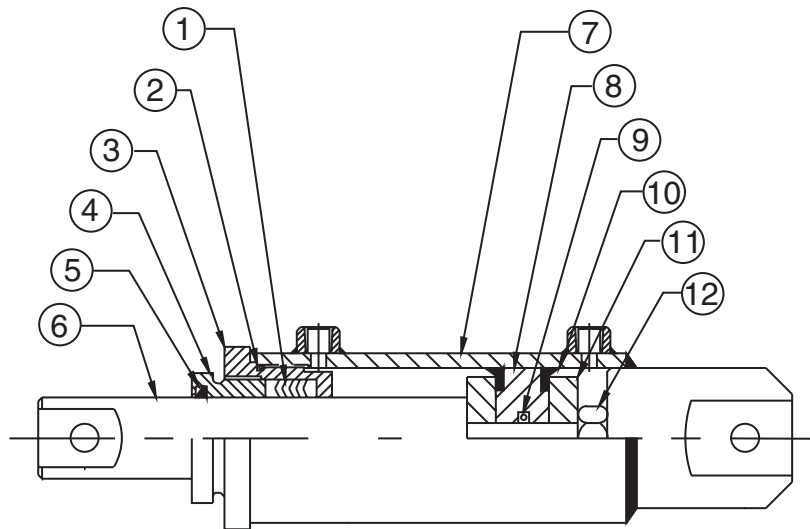


00030175 MOUNTING BLOCK, FULL TRIP

ITEM	QTY	PART #	DESCRIPTION
1	1	01130680	Mounting Block Weldment, Plow Portion
2	1	01130681	Mounting Block Weldment, Post Portion
3	1	05035034	Spring, Torsion, 3 3/4 x 5 1/4
4	1	05021319	Washer, 1 5/8, Flat, Zinc
5	1	01130685	Pivot Pin Weldment
6	1	01130692	Bolt, U, Full Trip Spring, Zinc
7	2	05020837	Nut, 5/8 x 11, GC, Top Lock, C&W
8	1	05022044	Pin, 5/16 x 3, Roll
9	1	05022035	Pin, #11, Hair, Zinc
10	1	01130620	Bolt, 1 1/2 - 6 x 6 1/2, G8, HHCS, Zinc
11	1	05022089	Pin, 1 1/4 x 5 1/2, Flat Head

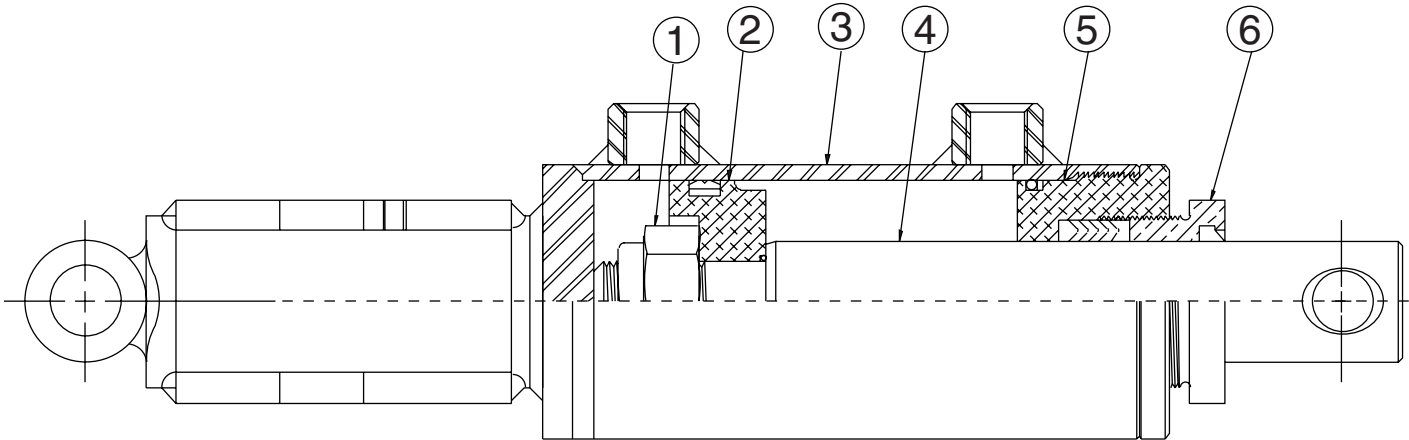
05000000 CYLINDER, 3" BORE X 10 STROKE

ITEM	QTY	PART NUMBER	DESCRIPTION
1	1	05000001	PACKING SET
2	1	05000002	O-RING
3	1	05000006	BOX
4	1	05000007	NUT
5	1	05000003	WIPER
6	1	05002170	ROD
7	1	05000014	TUBE
8	1	05000010	PISTON
9	1	05000004	O-RING
10	2	05000005	CUP
11	2	05000011	FOLLOWER
12	1	05000012	NUT
	1	05000013	SEAL KIT



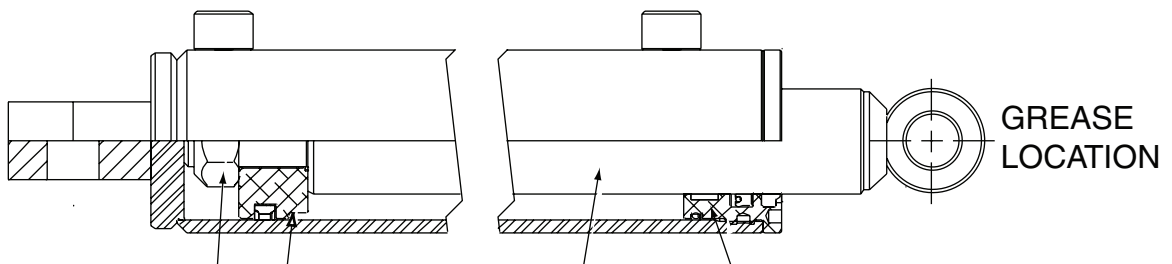
05002135 CYLINDER, 4 X 16.81, DA NEW STYLE

ITEM	PARTS #	DESCRIPTION
1	05000022	Lock Nut
2	05002724	Piston Uniring
3	05002725	Case Weldment
4	05002726	Rod
5	05000064	Head V-Stack
6	05000063	Pack Nut
7	05002559	Plug
8	05000065	Seal Kit



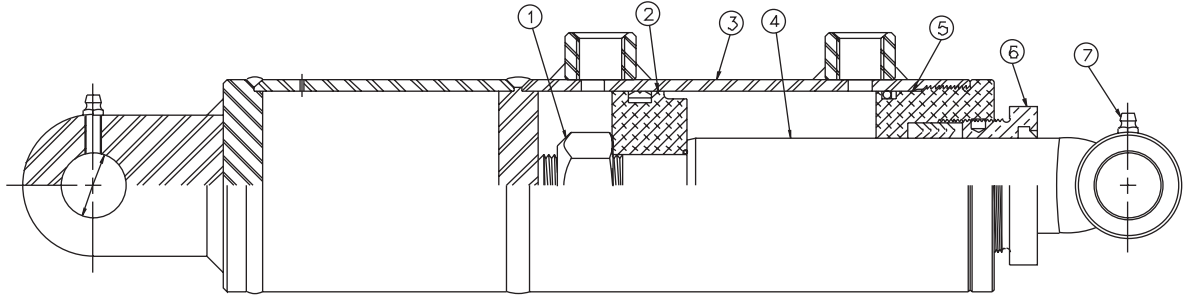
05002755 CYLINDER, 3 X 24, DA, WING TOE, TRIM LINE POST

ITEM	QTY.	PART NUMBER	DESCRIPTION
1	1	05002778	CASE WELDMENT
2	1	05002695	HEAD
3	1	05002672	PISTON
4	1	05001001	LOCK NUT
5	1	05002779	ROD WELDMENT
6	2	05002559	PLUG, PLASTIC
7	1	05002780	SEAL KIT



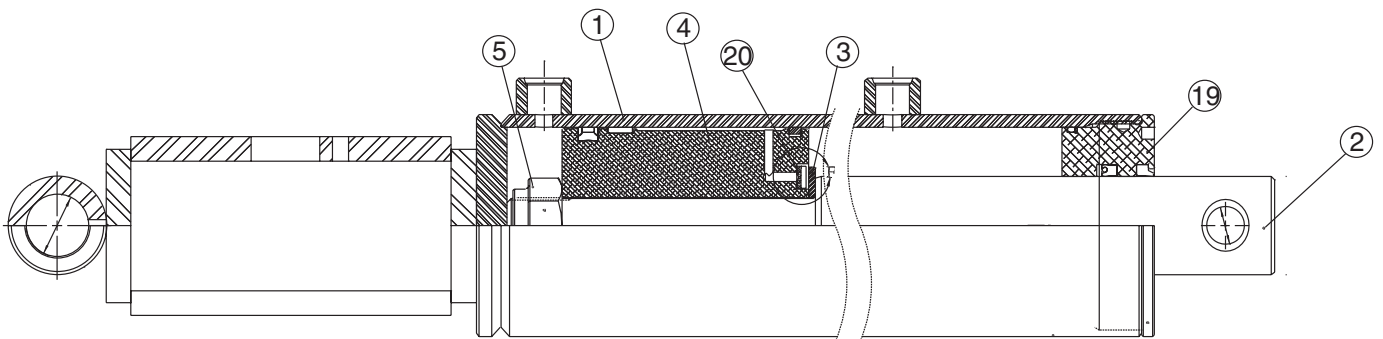
05002135 CYLINDER, 4 X 16.81, DA OLD STYLE

ITEM	PARTS #	DESCRIPTION
1	05000022	Lock Nut
2	05002724	Piston Uniring
3	05002725	Case Weldment
4	05002726	Rod
5	05000064	Head V-Stack
6	05000063	Pack Nut
7	05002559	Plug
8	05000065	Seal Kit



05002806 CYLINDER, 4 X 16.81

ITEM	QTY	PART NUMBER	DESCRIPTION
1	1	05002882	CASE WELDMENT
2	1	05002883	ROD
3	1	05002832	PISTON WASHER
4	1	05002884	PISTON
5	1	05002044	LOCK NUT
15	2	05002559	SAE PLUG
18	1	05002881	SEAL KIT
19	1	05002702	HEAD
20	1	05002834	ORIFICE



HOW TO ORDER PARTS

To order or inquire about replacement parts, please contact the distributor or store that the product was purchased through. To speed the information flow, please have the follow information ready:

- Model Number
- Serial Number
- Part Number and/or description as per the parts manual
- Quantity needed

For further information about **Monroe Truck Equipment** replacement parts, please call 800-880-0109 and ask for **Snow & Ice Parts Sales**.

RETURN POLICY

Merchandise returned to **Monroe Truck Equipment** must have a Warranty Service Request (WSR) form filled out completely and signed by authorized personnel. To get your WSR form, call 800-880-0109. For whole goods, ask for **Snow & Ice Sales**. For replacement parts, ask for **Snow & Ice Parts Sales**. All returned items are subject to a 15% restocking fee and must be sent freight prepaid!

MONROE TRUCK EQUIPMENT, INC. WARRANTY SNOW & ICE CONTROL PRODUCTS

Monroe Truck Equipment, Inc. warrants to the original purchaser, that if any part of the product proves to be defective in workmanship or material within **ONE YEAR** of the original installation, and is returned to us within 30 days of the discovered defect, we will (at our option) repair or replace the defective part. This warranty does not apply to damage resulting from misuse, neglect, accident, improper installation, normal wear items or lack of maintenance. This warranty is exclusive and supersedes all other warranties, whether expressed or implied. **Monroe Truck Equipment, Inc.** neither assumes, nor authorizes anyone to assume for it, any other obligation or liability in connection with this warranty and will not be liable for consequential damages.

All engines, pumps, motors, cylinders and valves are warranted by their manufacturer and not by **Monroe Truck Equipment, Inc.**. The manufacturer's warranty will apply to these parts. Electrical and hydraulic components are not to be disassembled without the express written permission of Monroe Truck Equipment. Use of replacement parts other than original equipment voids this warranty.

All defective parts returned must be accompanied by the model number, serial number, date installed, date of defect, description of defect, and the name of the distributor from whom it was purchased. All warranty claims must have prior written approval from **Monroe Truck Equipment, Inc.**

Please return the warranty registration card that accompanies this manual to confirm receipt of this parts catalog and acknowledge the information contained within. Failure to return the attached card may result in a voided warranty.



1051 West 7th Street
Monroe, WI 53566
608-328-8127 ~ Fax: 608-328-4278

Warranty Policy

Uninstalled Parts and Equipment Provided by Monroe Truck Equipment

Monroe Truck Equipment will provide the following limited warranty for a period of one year to the original purchaser of all uninstalled goods provided by Monroe Truck Equipment:

LIMITED WARRANTY: All goods provided by Monroe Truck Equipment (MTE) will be free from defects in material and workmanship for a period of one year from the date of purchase by the original purchaser. This limited warranty shall be the sole and exclusive remedy for any such product found to be defective. This limited warranty supercedes all previous warranties and is exclusive and in lieu of all other warranties, whether expressed or implied.

This limited warranty applies only to parts or accessories manufactured by MTE and/or provided by same. Except with respect to title, this limited warranty does not pertain to parts or accessories not manufactured and/or provided by MTE, regardless of whether such parts or accessories were selected and/or recommended by MTE. MTE will, as a service to the buyer, pass on any warranties received from the original manufacturer of MTE provided parts and/or accessories.

MTE will not under any circumstances be liable for any incidental or consequential damages whether in tort, contract, or otherwise, for any bodily injury, death, property damage, loss of use, or loss of income resulting from or in any way arising out of any goods provided by MTE, or their sale, use, or manufacture.

Any warranty claim deemed to be arising from the result of misuse, abuse, neglect, accident, improper installation, lack of maintenance, act of war (whether declared or otherwise), or act of God will be denied. Any repair or modification by the buyer or any third party, without the prior written consent of MTE, will void any possible warranty compensation. Any damage deemed to be the result of abnormal operation will not be compensated by this warranty.

Normal or special maintenance items such as fuels, fluids, tires, belts, hoses, filters, air cleaners, light bulbs, and any other items subject to normal wear and tear that are supplied in connection with goods provided by MTE are not allowed under this warranty.

All engines, pumps, cylinders, valves, and motors are warranted by their manufacturer and not by Monroe Truck Equipment. The manufacturer's warranty will apply to these parts. Electrical and hydraulic components are not to be disassembled without the express written consent of MTE. Any disassembly of MTE provided components without prior authorization will void the applicable warranty.

Monroe Truck Equipment shall be the sole and final determining authority as it applies to the administration of this warranty policy. Purchaser acknowledges receipt of Monroe Truck Equipment Warranty Policy and agrees to be bound by same.



GLOBAL SOLUTIONS
ARMORED VEHICLES ~ SPORT TRUCK CONVERSIONS
MUNICIPAL SNOW & ICE CONTROL ~ FIRE APPARATUS
PICKUP TRUCK ACCESSORIES ~ TRUCK EQUIPMENT/MODIFICATIONS





1051 West 7th Street
Monroe, WI 53566
608-328-8127 ~ Fax: 608-328-4278

Any and all warranty claims must be forwarded to MTE within 10 days of defect discovery. A copy of the original Monroe Truck Equipment invoice as well as the manufacturer's model number, serial number, and date of installation must accompany all correspondence regarding said claims. MTE will, at their option, choose whether to repair or replace the defective part unless otherwise specified by the original manufacturer of said part.

Procedures for Warranty Claims Notification

For submission of any warranty claim please contact Monroe Truck Equipment – Warranty Department at 800-356-8134

The following documentation will be needed when you call for initial warranty authorization:

1. A copy of the original MTE invoice.
2. Make, Model, and VIN or Serial Number of the equipment involved.
3. Part number and serial number of the part in question.
4. A complete description of the problem.

The following must accompany any claim submitted to Monroe Truck Equipment:

1. Documented photographs of any physical damage.
2. Inspection notes by MTE personnel or MTE authorized 3rd party.
3. Authorization number issued by Monroe Truck Equipment – Warranty Department.

Defective parts must be returned to Monroe Truck Equipment (freight prepaid) within 30 days of issuance of Authorization Number.

Monroe Truck Equipment reserves the right to void any warranty for failure to comply with Monroe Truck Equipment Warranty Policy.

This policy is effective October 11, 2012

