



---

# Parts & Service Manual for Monroe Junior Wing



**Monroe Snow & Ice Control**  
1051 W. 7th Street • Monroe, WI 53566  
USA: 877-834-9049 • Fax: 608-329-8488  
[www.monroetruck.com](http://www.monroetruck.com)

05050541-14  
1/2/2015

# Table of Contents

---

General Information	2
How to Order Parts	2
Return Policy	2
Safety Instructions	3
Maintenance Instructions	6
Replacement Parts	10
Warranty	56

## General Information

---

- Use only Monroe Truck Equipment O.E.M. replacement parts. Failure to do so will void the warranty.
- Location descriptions are noted in direction of travel (i.e. front, rear, left and right).
- Delivery of replacement parts is subject to our sales delivery terms.
- Replacement parts listed in this manual reflect the most common items for this product. If you do not find the part you require, please call your distributor.
- Monroe Truck Equipment reserves the right to make revisions or alterations to the parts manual at any time.

## How to Order Parts

---

To order or inquire about replacement parts, please contact the distributor or store that the product was purchased through. To speed the information flow, please have the following information available:

- Model Number
- Serial Number
- Part Number and/or Description of the Part
- Quantity Needed

For further information about Monroe Truck Equipment replacement parts, please call 877-834-9049.

## Return Policy

---

Merchandise returned to Monroe Truck Equipment must have a Warranty Service Request (WSR) form filled out completely and signed by authorized personnel.

To get your WSR form for whole goods, call Snow & Ice Sales at 800-880-0109.

To get your WSR form for replacement parts, call Warranty at 877-834-9049..

All returned items are subject to a 15% restocking fee and ***must be sent freight pre-paid.***

# Safety Instructions

---

**Warning:** Before working under the vehicle or around the wing, lower the moldboard to the ground, shut off the truck engine and remove the key from the ignition. Prevent accidental startup and operation of the wing to avoid personal injury.

**Warning:** Accidental lowering of the wing when driving or when working around the vehicle may cause death, severe injury, and property damage. When the wing is not being used actively for clearing snow, raise it all the way and connect the safety restraint chain(s) that prevent lowering. Never transport the wing at highway speeds unless the wing is raised and chained up.

- Locate and read all safety decals on the unit before operating the equipment. Familiarize yourself with all potential hazards in operating this equipment.
- Read all installation, operation, and maintenance instructions before operating the equipment.
- Keep all provided shields, covers, and guards in place during operation of the unit.
- Stay away from the wing when it is moving. Stay away from pinch points created by the moving wing components.
- Never work on or around the wing unless the vehicle is turned off and the ignition key is removed. Follow lock-out/tag procedures for working on hazardous equipment.
- Lower the wing to the ground before working on any of its components.
- When the wing is raised and not in use, always attach the safety restraint chains to prevent accidental and unexpected lowering of the wing.
- Be aware of the extra vehicle width created by the wing installation. Allow for the extra width when driving in traffic, passing parked vehicles, and entering buildings through overhead doors.
- When installing a new cutting edge, always “clip” the lower in-board corner of the edge to prevent the corner from catching on the pavement if the wing toe is set too low. If the square corner of a cutting edge catches the pavement, the wing can be thrown up and into the side of the vehicle cab, causing serious damage.
- Watch for hydraulic fluid leaks at fittings and hoses. High-pressure fluid leaks can penetrate skin and cause severe injury.

## Safety Instructions *(Continued)*

---

- Do not climb or walk on the wing or its mounting components, especially when the unit is wet or icy.
- If the wing needs repair or the controls are not functioning properly, repair the unit immediately. Do not continue to operate a malfunctioning unit—further and more serious damage may occur.
- Do not disassemble spring-loaded components such as trip edges and push arms unless you have the correct tools and are trained in these tasks. Pre-loaded springs are under extreme compression and can cause severe injury if the spring force is released suddenly and unexpectedly.
- If the wing accidentally impacts an object during use, stop immediately and inspect all components. Look for bent and broken components. Do not continue to operate with a severely damaged wing.
- When removing and storing a wing for summer, locate it away from high traffic areas and block it securely so it cannot fall or be pushed over.

## Welding Guidelines

---

- Structural welds may be defined by a Weld Procedure Specification (WPS) document. Where applicable, this document will be included in the installation instructions for Snow & Ice products. Where a WPS is provided, welds are to be performed following the specifications and instructions on the WPS.
- Where a WPS applies, the person performing the welding should be qualified (tested) to the procedure on the WPS. This is to verify that the person can successfully perform the required weld.
- If a WPS is not provided, follow the general guidelines given below.
- For stick (rod) welding (SMAW) use low-hydrogen rods such as AWS A5.1, E7018. Welding rods must be stored in accordance with AWS D1.1, Section 5.3.2.1 to prevent absorption of moisture and other contaminants.
- For wire (gas shield) welding (GMAW) use AWS A5.18, ER70S-6, F6 wire. Wire diameter must be 0.035" or 0.045 as dictated by the size of the weld or as indicated on the applicable WPS.

## Welding Guidelines *(Continued)*

---

- All welds must have adequate penetration and fillet size to obtain maximum strength of the weld. Cold lap welds and undercutting are not acceptable. Unacceptable welds must be ground out and re-welded. Typically, 3/8" weld fillets are required, unless a WPS states differently.
- Verify that the welding machine being used is working properly and that the volt/amp gauges are accurate when making settings based on a WPS.
- Components to be welded must be clean and dry at the weld area, with paint, rust, and oil removed.
- Unless otherwise directed on a WPS, all parts to be welded must be at least 50° F before welding is performed.
- When welding cast parts such as pipe brace balls, the parts must be heated to 150° F for several minutes to drive out any moisture.
- When welding to large parts that will act as a heat sink, pre-heating of the weld area may be required to insure equal penetration on both parts. Refer to the applicable WPS or to AWS guidelines if available. Before heating parts, check for wiring, hoses, and other components that could be damaged by the heat. Remove or move these components before applying heat to the area.
- Disconnect all battery cables (both positive and ground) before welding to help prevent damage to electronic components on the chassis.
- Always be sure the welder has a good ground contact as close to the weld point as possible. Remove dirt, paint, and grease from the area where the ground will be connected. This will help prevent damage to electronic components on the chassis.
- Never "quench" hot welds or otherwise accelerate cooling. Allow all welds to cool in still air.
- Welding on MTE products for any reason other than instructed installation procedures is prohibited and may void the warranty on the product.
- Never cut, weld, or grind directly on a chassis frame. Do not drill additional holes through a chassis frame unless directed to do so in the installation instructions.
- This information applies only to products and installation instructions where welding is instructed and allowed. Use of welding where threaded fasteners are indicated in the installation instructions may void the warranty on the product and/or the OEM chassis components.

# Maintenance Instructions

---

## ***In Season:***

**Warning:** Before working under the vehicle or around the wing, lower the moldboard to the ground, shut off the truck engine, and remove the keys from the ignition. Prevent accidental startup and operation of the wing to avoid personal injury.

**Warning:** Accidental lowering of the wing when driving or when working around the vehicle may cause death, severe injury, and property damage. When the wing is not being used actively for clearing snow, raise it all the way and connect the safety restraint chain(s) that prevent lowering. Never transport the wing at highway speeds unless the wing is raised and chained up.

- Re-torque all fasteners after the first 8 hours of use.
- Check for loose, damaged, and missing fasteners before each use.
- Inspect and re-torque all fasteners at the beginning of each plowing season.
- Lubricate grease fittings every 10 hours during normal use and more often during heavy use.
- For open slides on wing posts, apply a coating of grease as required.
- Tighten all hydraulic fittings after the first 8 hours of use.
- Inspect hydraulic fittings for leaks every week and tighten as required. If a hydraulic fitting continues to leak after being tightened, replace the fitting as soon as possible.
- Check the cutting edge for wear after each use. Replace the cutting edge when it wears to within ½" of the moldboard.
- When installing a new cutting edge, "clip" the lower in-board corner as directed in this instruction manual to prevent catching on pavement.
- Check the operation of the wing before each use.
  - Verify that the wing has full up and down travel. Check all functions: heel, toe, raise/lower, and benching function (if applicable).
  - Investigate the cause of any binding or sticking in the wing travel or the failure of the wing to raise or lower fully.
  - If the hydraulic valves are operated by cables, verify that the lever(s) and cables operate smoothly and easily, and that the levers snap back to center when released.
- Inspect the hydraulic hoses and any electrical wiring for wear or damage every month. Check hoses and wiring attached to moving components closely.
- At the end of each storm event, pressure-wash the wing and its components, especially any horizontal surfaces that can hold road salt and other corrosive chemicals. Removing salt and other chemicals regularly will prolong the life of all components.

# Maintenance Instructions *(Continued)*

---

## ***In Season (Continued):***

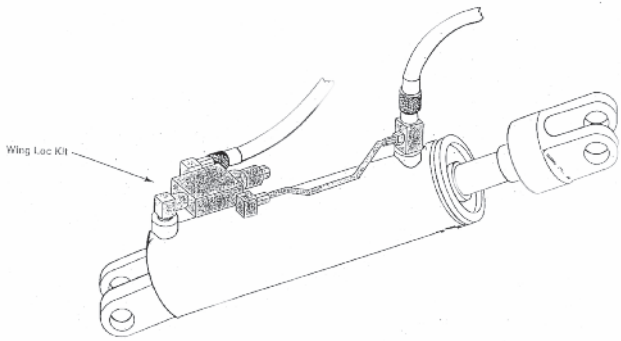
- Due to the harsh operating conditions of a wing, regular inspection and maintenance is critical to safe operation and durability of the wing. The owner or end user of the wing must create and enforce the use of an inspection and maintenance schedule.
- If the wing is subjected to serious impact against another object, inspect it closely for bent or broken parts.

## ***Off Season:***

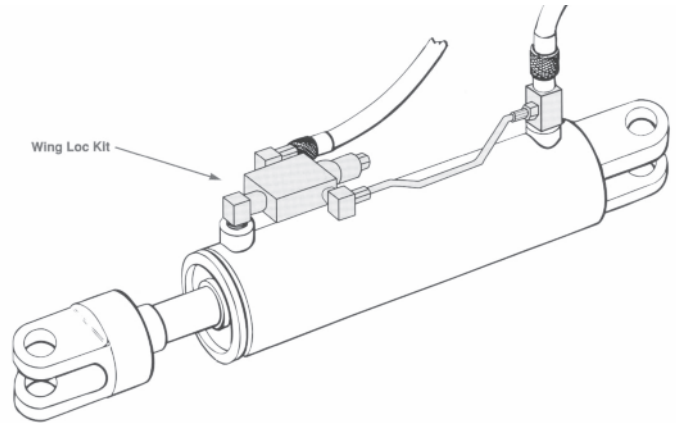
- At the end of the plowing season, the wing moldboard should be removed. For some installations, the mounting brackets and cross tube(s) may also be removed.
- Inspect the moldboard and the mounting components on the truck before removal. Make any required repairs immediately so that the wing is ready to be reinstalled and used at the start of the next winter season.
- Before disconnecting any hydraulic hoses, lower the wing to the ground. If the wing lowers unexpectedly, it can cause severe injury to feet and hands.
- When quick-disconnects are separated, cover and cap the ends to prevent the entry of contaminants into the hydraulic system and possible impact damage to the ends.
- If there are no quick disconnects and hoses are removed from fittings, cap or plug all open hydraulic fittings.
- The exposed areas on hydraulic cylinder rams should be covered with grease during the storage period. Remove the grease before returning the wing to service.
- If possible, store the wing and components indoors to reduce rusting and UV damage to hoses.
- Keep all loose parts with the wing so they are readily available for re-installation.
- When reinstalling the wing, replace any damaged fasteners and follow the fastener torquing guidelines for in-season use.



# WING LOC

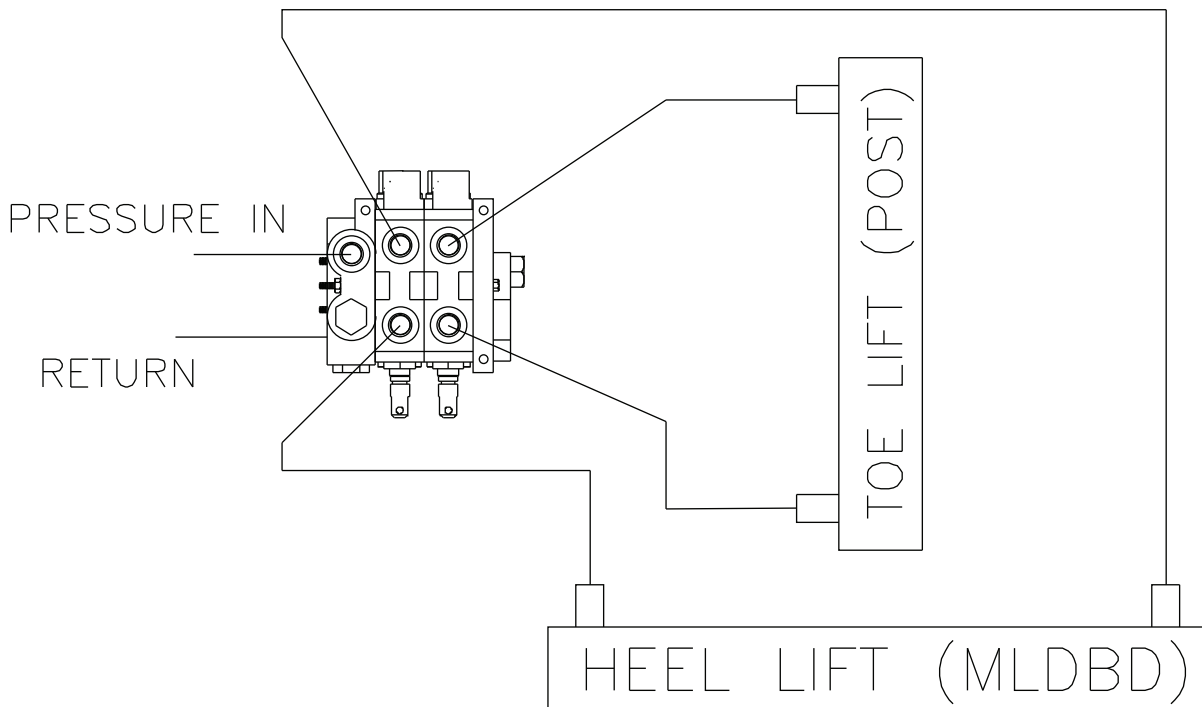


**Wing Lock Plumbing**  
*Install the lock valve at the base of the cylinder when you want the rod locked in the extended position.*



**Wing Lock Plumbing**  
*Install the lock valve on the rod side of the cylinder when you want the rod locked in the collapsed position.*

# HYDRAULIC PLUMBING KIT



# INSTALLATION INSTRUCTIONS

These mounting instructions are intended as a guide to aid you in the installation of your **Monroe Junior Wing**. All dimensions noted in the instructions are approximate and may vary due to make and model of chassis, tire size, type of suspension, spring deflection, customer preference and interference caused by immovable objects such as a transfer case. **Monroe Truck Equipment** assumes no responsibility for improper installation unless installed at a **Monroe Truck Equipment** location. Mounting location should be discussed by the end-user and the installer prior to installation in order to achieve the best possible installation.

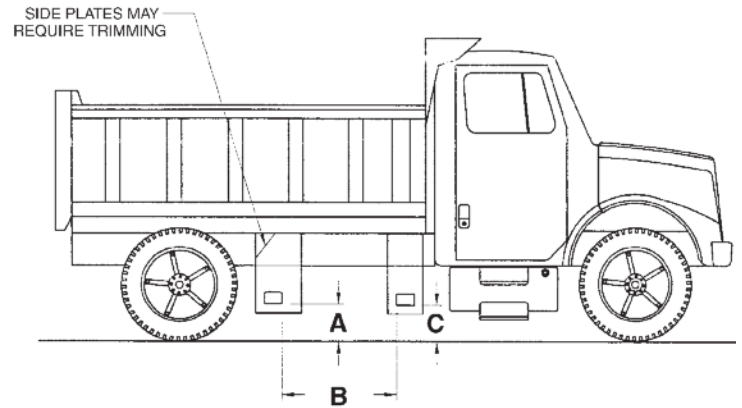
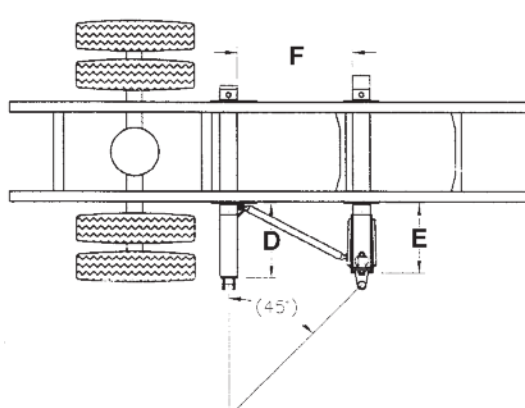
## 1. Trimming Side Plates to Fit

- Layout tube locations to determine how much to trim  $\frac{1}{2}$ " side plates (if necessary). For 6' and 7' wings the side plates are to be fitted to achieve a dimension of at least  $36\frac{1}{4}$ " (40" is ideal) between inside of tubes. 8', 9', and 10' wings need wider spacing if possible. (See Diagram Below)
  - Punch (4) holes ( $\frac{11}{16}$ " diameter) in right side plates only, for angles that fasten tubes to side plate.
  - Weld  $\frac{1}{2}$ " x  $1\frac{1}{4}$ " reinforcement bars on all side plates. (Not Furnished) The location of the bars will depend upon the shape of the side plates.
- Note - The rear side plates must be made to a right and a left.

## 2. Installation of Side Plates

- It may be necessary to relocate vehicle accessories for proper wing installation.
- Mount side plates according to the diagrams below.
- A minimum dimension of Measurement B between inside of tubes must be held.
- Drill (4-6)  $2\frac{1}{32}$ " holes through side plates and frame. Fasten side plates with  $\frac{5}{8}$ " bolts, washers & nuts included in the mounting hardware kit.
- Weld support angles (Not Furnished),  $\frac{3}{8}$ " x 3" x 3" x 12", behind side plates where they meet the frame. See page 7.

**The measurements in the charts below are approximate and are based on a truck with a body previously installed. Raise measurements A and C by approximately 1" if installing a Jr. Wing on a bare truck frame.**



**ParaGlide Post with Standard Moldboard**

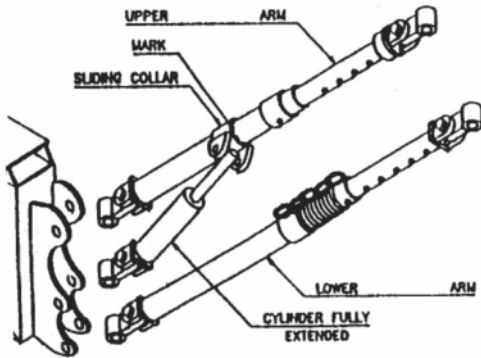
	6'/7'	8'/9'	10'/11'
<b>A</b>	17"	17"	17"
<b>B</b>	49"	59"	64"
<b>C</b>	16"	16"	16"
<b>D</b>	26"	26"	26"
<b>E</b>	28"	28"	28"
<b>F</b>	$49\frac{1}{8}$ "	$59\frac{1}{8}$ "	$64\frac{1}{8}$ "

**NOTE: When installing ParaGlide Post add 9.188" to B Dimension. C=16"**

# Installation Instructions - OPTIONAL Power Pusharm

## POWER PUSHARM INSTALLATION

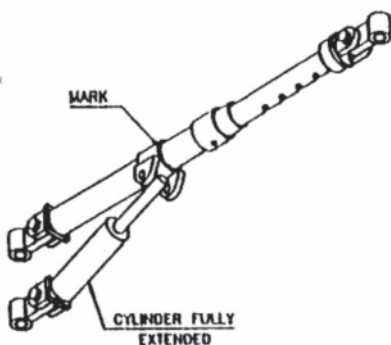
1. Complete the entire installation, including hydraulic system & controls. Unit must be operational. Attach push arms to rear support (or slide) and mount the wing.
2. Connect cylinder as shown below.



3. Using a chain falls or other suitable and safe lifting apparatus, raise the rear of the wing to it's folded position. Raise the front to a carrying position.

**CAUTION!** If the front of the wing is raised high for this setup, the rear may fold too close and strike the mirror or cab. A suitable height for setup purposes would be to raise the front of the wing just above the bottom of the front mast.

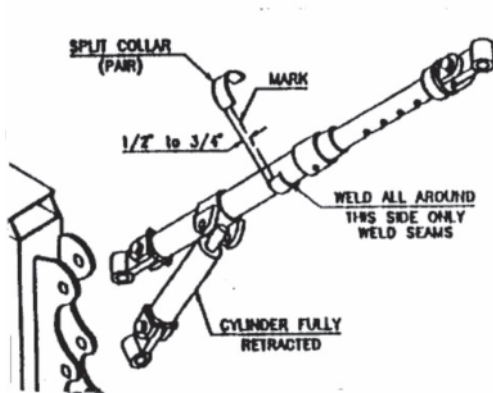
4. Operate the arm cylinder to extend it to it's maximum length. With a welders pencil or paint, mark the upper arm at the outer end of the sliding collar.



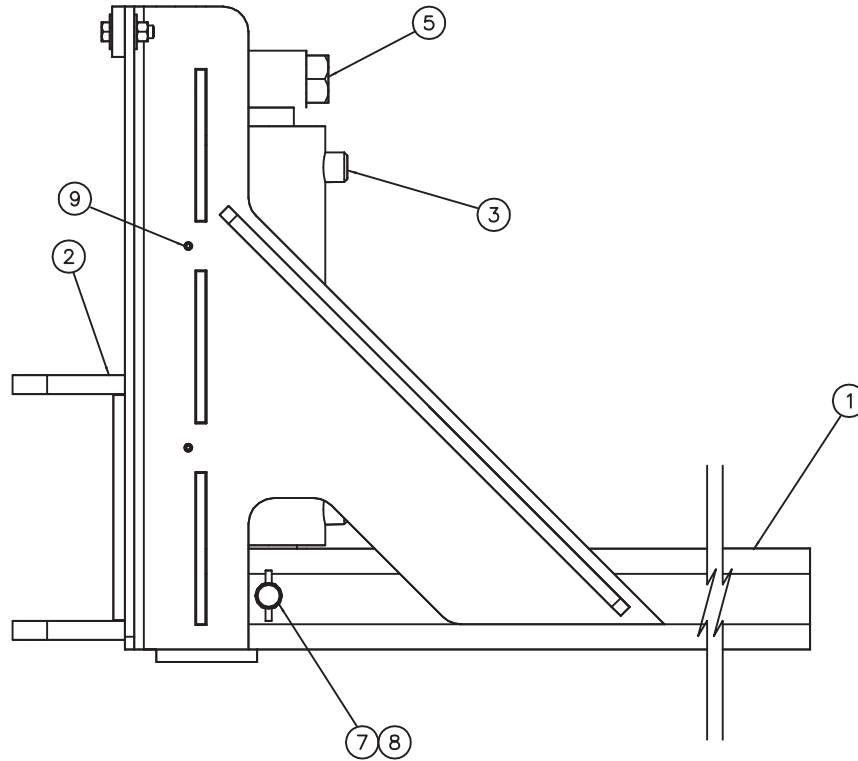
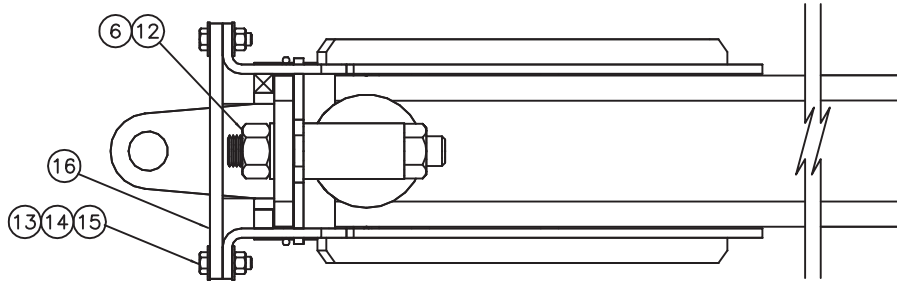
# Installation Instructions - OPTIONAL Power Pusharm

---

5. Lower the wing (front & rear) to the floor. **Retract the arm cylinder completely.** The outer split collar (for lifting) should be positioned  $\frac{1}{2}$ " to  $\frac{3}{4}$ " inside (towards truck) the mark made in step 4. Weld the collar all around, but only on the side away from the sliding collar. Position other split collar 2" behind the back sliding collar and weld in the same manner. Weld seams also. Locate (2)  $\frac{1}{2}$ " x 1" x 14" bars on the split collars to limit rotation of slide collar.



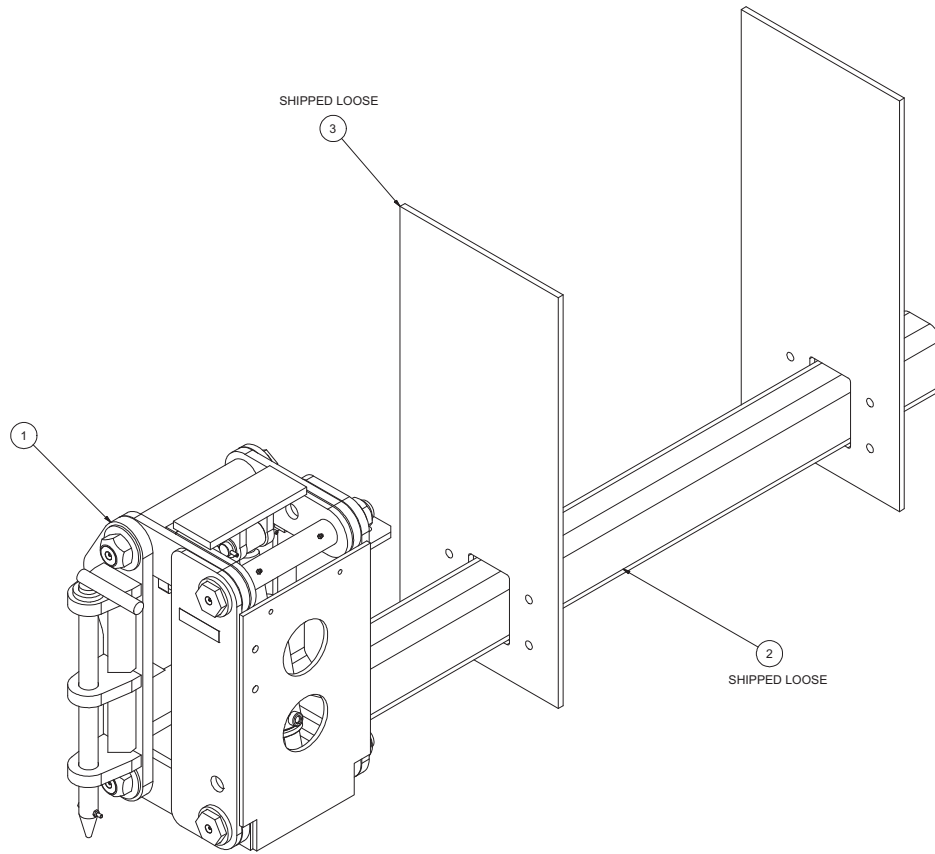
# Wing Post Assemblies



## 00063000 WING POST ASSEMBLY, RH, JR, 12.00, DF, DIRECT

Item	Qty	Part Number	Description
1	1	00063001	Wing Post Weldment
2	1	00063006	Slide Weldment
3	1	05002979	Cylinder, 4 x 12 DA, Jr Wing Toe See page 49
5	1	05010858	Bolt, 1¼-7 x 7, G8, HHCS, Zinc
6	1	05020835	Nut, 1¼-7, GC, Top Lock, C&W
7	1	00027135	Pin, Attachment
8	2	05022026	Pin, ¼x 2, Roll Zinc
9	4	05050288	Grease Zerk, ¼-28, Straight, Threaded
12	1	05021316	Washer, 1¼, Flat, Zinc
13	2	05010692	Bolt, ½-13 x 1¾, G8, HHCS, Zinc
14	4	05021005	Washer, ½, Mil-Carb, Zinc
15	2	05020847	Nut, ½-13, Top Lock, C&W
16	1	00014603	Stiffener Bar, Bolt-On, Wing Post Jr.

# Wing Post Assemblies



## 00135810 WING POST KIT, RHMM, DF, PARA

Item	Qty.	Part Number	Description
1	1	00116562	WING POST ASSY,RHMM,DF,PARA <b>See page 13</b>
2	1	00014619	TUBE,RECT,MS,6.00x4.00x.500x58.500
3	2	00140009	SIDE PL,WING,PARAGLIDE,MM,ID

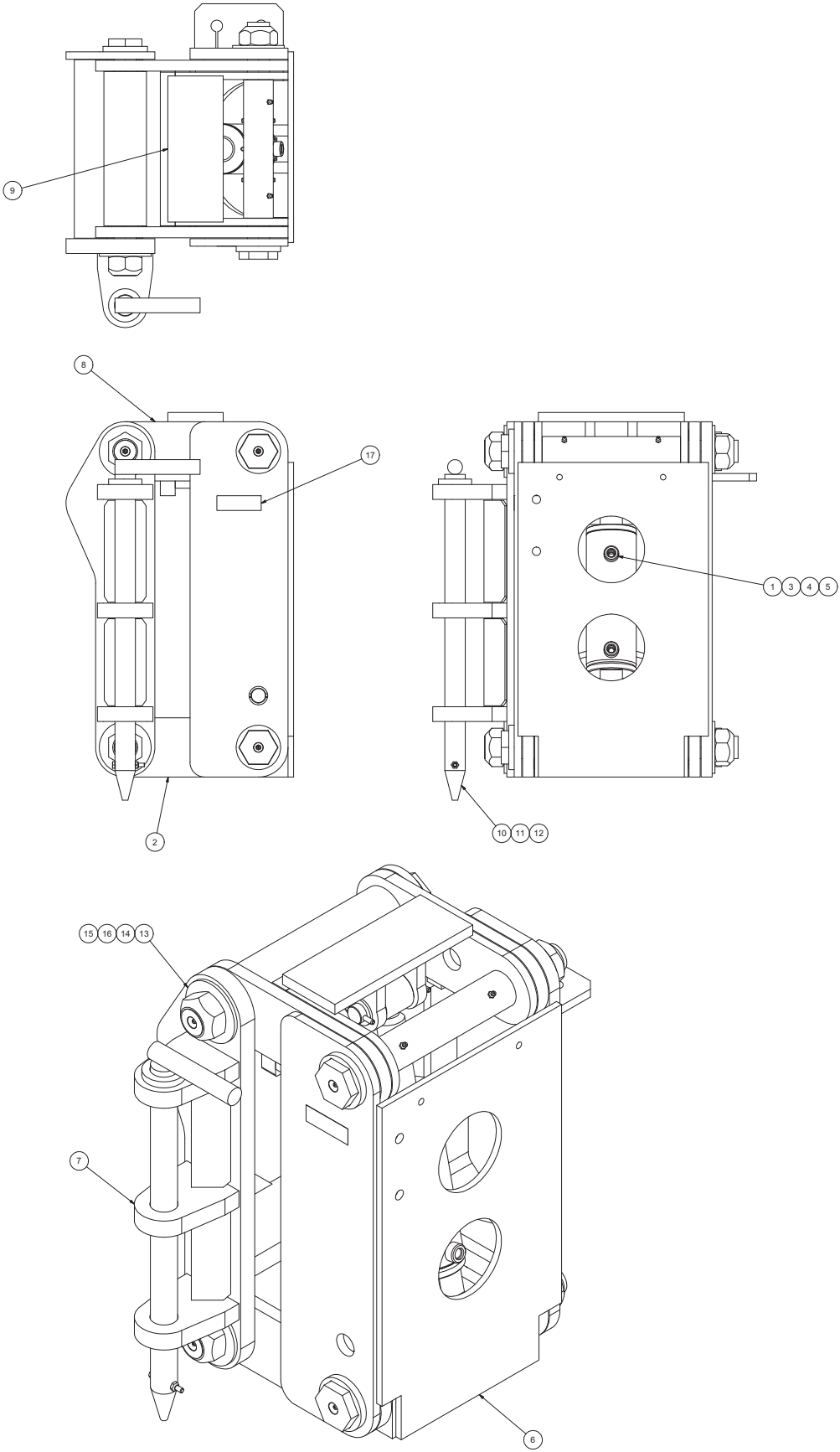
## 00156193 WING POST KIT, RHMM, DF, PARA

Item	Qty	Part Number	Description
1	1	00156192	WING POST ASSEMBLY, RHMM, DF, PARA <b>See page 15</b>
2	1	00014619	TUBE, RECT, MS, 6 X 4 X .5 X 58.5
3	2	00140009	SIDE PLATE, WING, PARAGLIDE, MM, ID

## 00137875 WING POST KIT, LHMM, DF, PARA

Item	Qty	Part Number	Description
1	1	00116563	WING POST ASSEMBLY, LHMM, DF, PARA <b>See page 17</b>
2	1	00014619	TUBE, RECT, MS, 6 X 4 X .5 X 58.5
3	2	00140009	SIDE PLATE, WING, PARAGLIDE, MM, ID

# Wing Post Assemblies

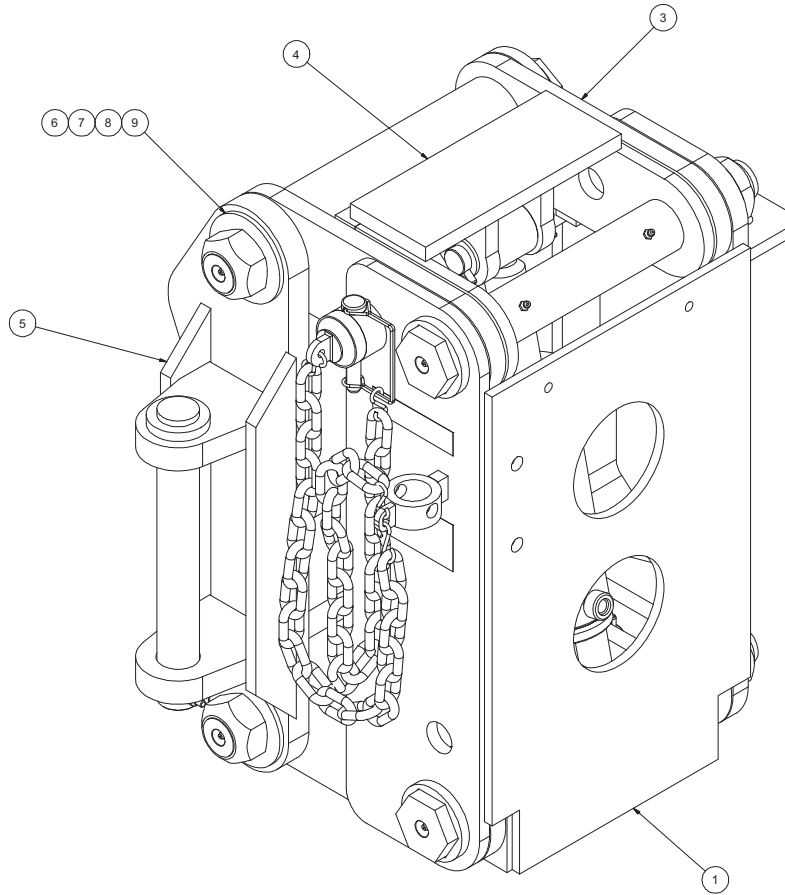


# Wing Post Assemblies

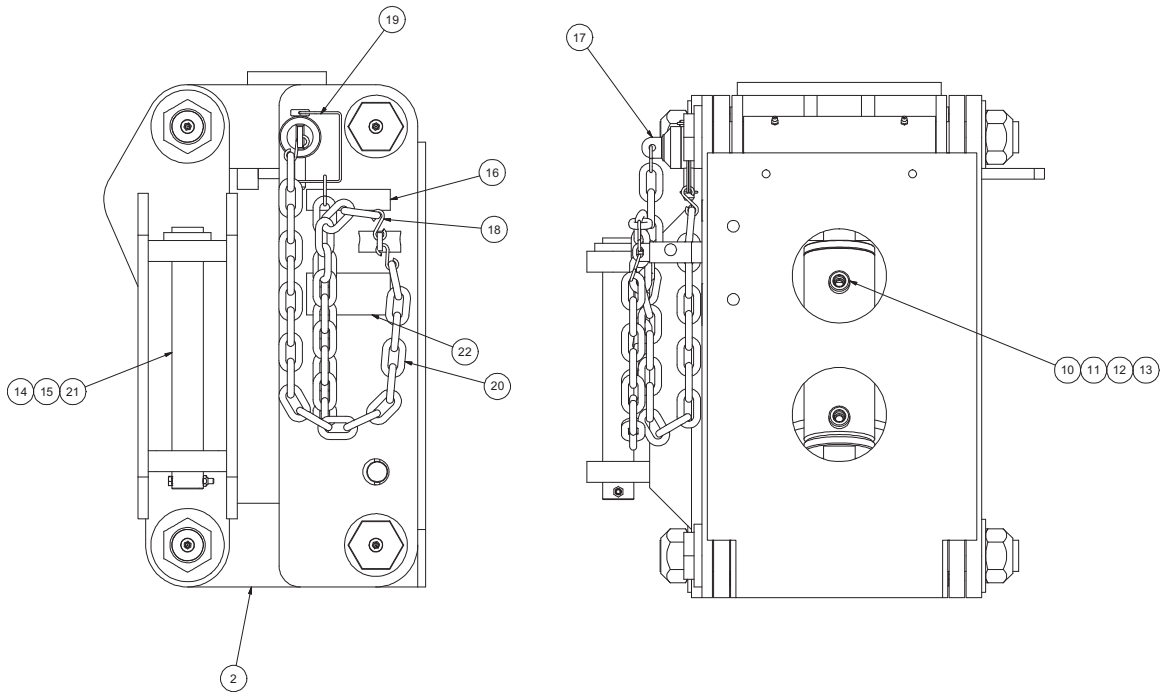
00116562 WING POST ASSEMBLY, RHMM, DF PARA				
Item	Qty.	Part Number	Description	
1	1	05003214	CYLINDER,3x5,DA,EXT WING HEEL	<i>See This Page 53</i>
2	1	00135804	ARM WLDMT,LOWER,POST,WING	
3	4	05022004	PIN .250 x 2.25 ROLL ZC	
4	4	05021202	BUSHING 1.50x1.00x10GA ZC	
5	2	00018157	PIN 1.000 x 4.500,NO HEAD,ZC	
6	1	00135800	WING POST WLDMT,RHMM,.750	
7	1	00135802	ARM WLDMT,LIFT,POST,WING	
8	1	00135812	ARM WLDMT,UPPER,POST,WING	
9	1	00137850	LINK WLDMT,FLOAT,POST,WING	
10	1	01130613	ATTACHMENT PIN WLDMT,BLOCK	
11	1	05010597	BOLT .250-20 x 2.00 G8 HHCS ZC	
12	1	05020899	NUT .250-20 GC TOPLOCK C&W	
13	4	05021318	WASHER 1.500 FLAT ZC	
14	4	05020806	NUT 1.50-6 GC TOPLOCK C&W	
15	8	05050288	GREASE ZERK,.250-28 STRAIGHT	
16	4	00136886	BOLT,PARAGLIDE,15.125	
17	1	05053301	DECAL,1"X4", WHITE/BLACK, PARA	



# Wing Post Assemblies



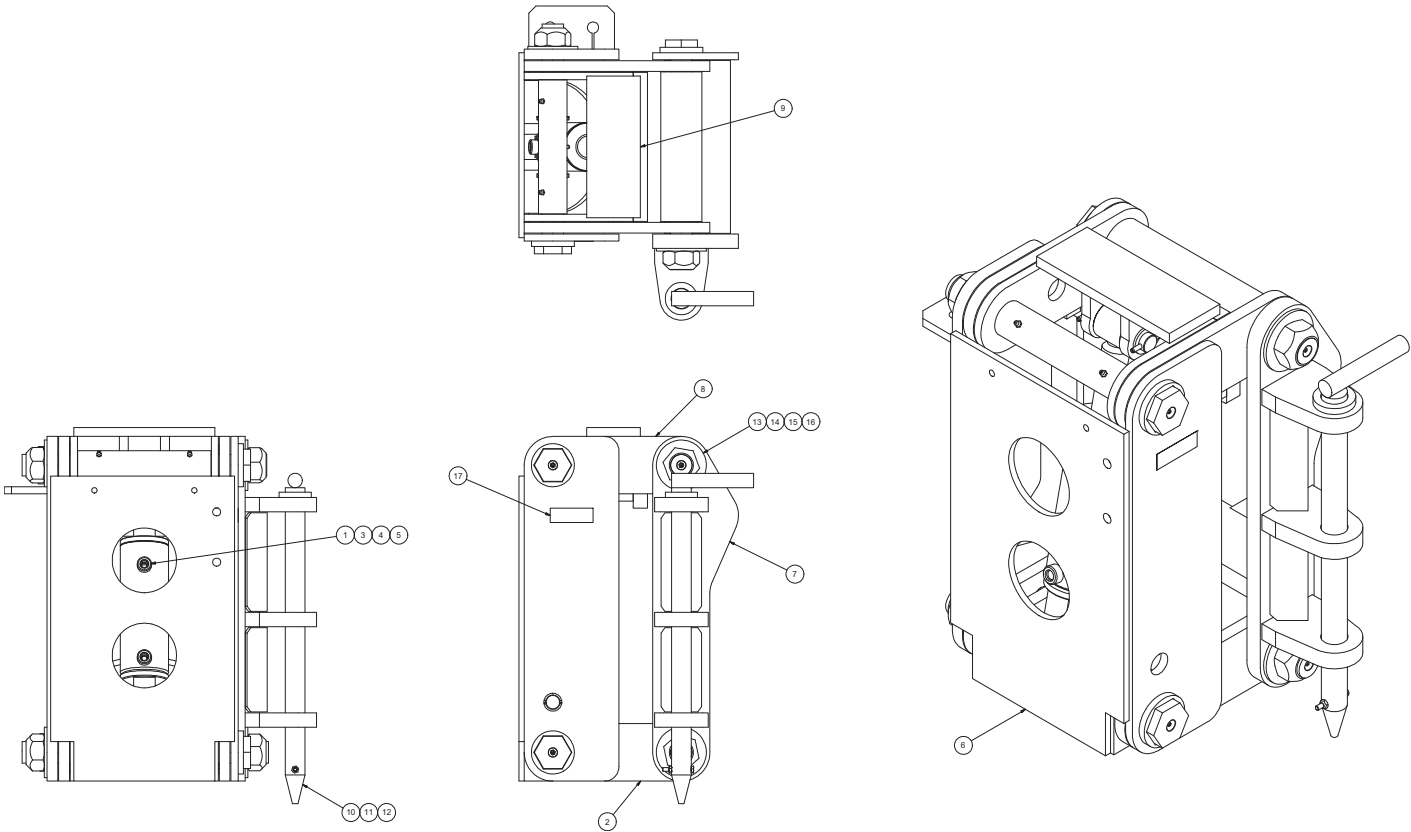
NOTE: COMPLETELY REMOVE PLUGS FROM CYLINDER BEFORE INSTALLING. REINSTALL PLUGS AFTER ASSEMBLY IS COMPLETE.



# Wing Post Assemblies

00156192 WING POST ASSEMBLY, RHMM, DF, PARA			
ITEM	QTY	PART NUMBER	DESCRIPTION
1	1	00156191	WING POST WLDMT,RHMM,.750,PARA
2	1	00135804	ARM WLDMT,LOWER,POST,WING
3	1	00135812	ARM WLDMT,UPPER,POST,WING
4	1	00137850	LINK WLDMT,FLOAT,POST,WING
5	1	00144421	ARM WLDMT,LIFT,POST,WING,KS
6	4	00136886	BOLT,PARAGLIDE,15.125
7	8	05050288	GREASE ZERK,.250-28 STRAIGHT
8	4	05021318	WASHER 1.500 FLAT ZC
9	4	05020806	NUT 1.50-6 GC TOPLOCK C&W
10	2	00018157	PIN 1.000 x 4.500,NO HEAD,ZC
11	4	05021202	BUSHING 1.50x1.00x10GA ZC
12	4	05022004	PIN .250 x 2.25 ROLL ZC
13	1	05003214	CYLINDER,3x5,DA,EXT WING HEEL <i>See This Page 53</i>
14	1	05010597	BOLT .250-20 x 2.00 G8 HHCS ZC
15	1	05020899	NUT .250-20 GC TOPLOCK C&W
16	1	05053301	DECAL,1"X4" WHITE/BLACK,PARA
17	1	00141202	PIN WLDMT,1.250 DIA X 3.875
18	4	05050583	HOOK,S,1/8" WIRE DIAMETER
19	1	98416A562	SQUARED RETAINER PIN,.500 DIA
20	2	00135655	CHAIN,PRF COIL,.313x21.744
21	1	00063009	PIN WLDMT,1.5x12.500,JR WING
22	1	05090728	DECAL,WARNING,STAY CLEAR OF

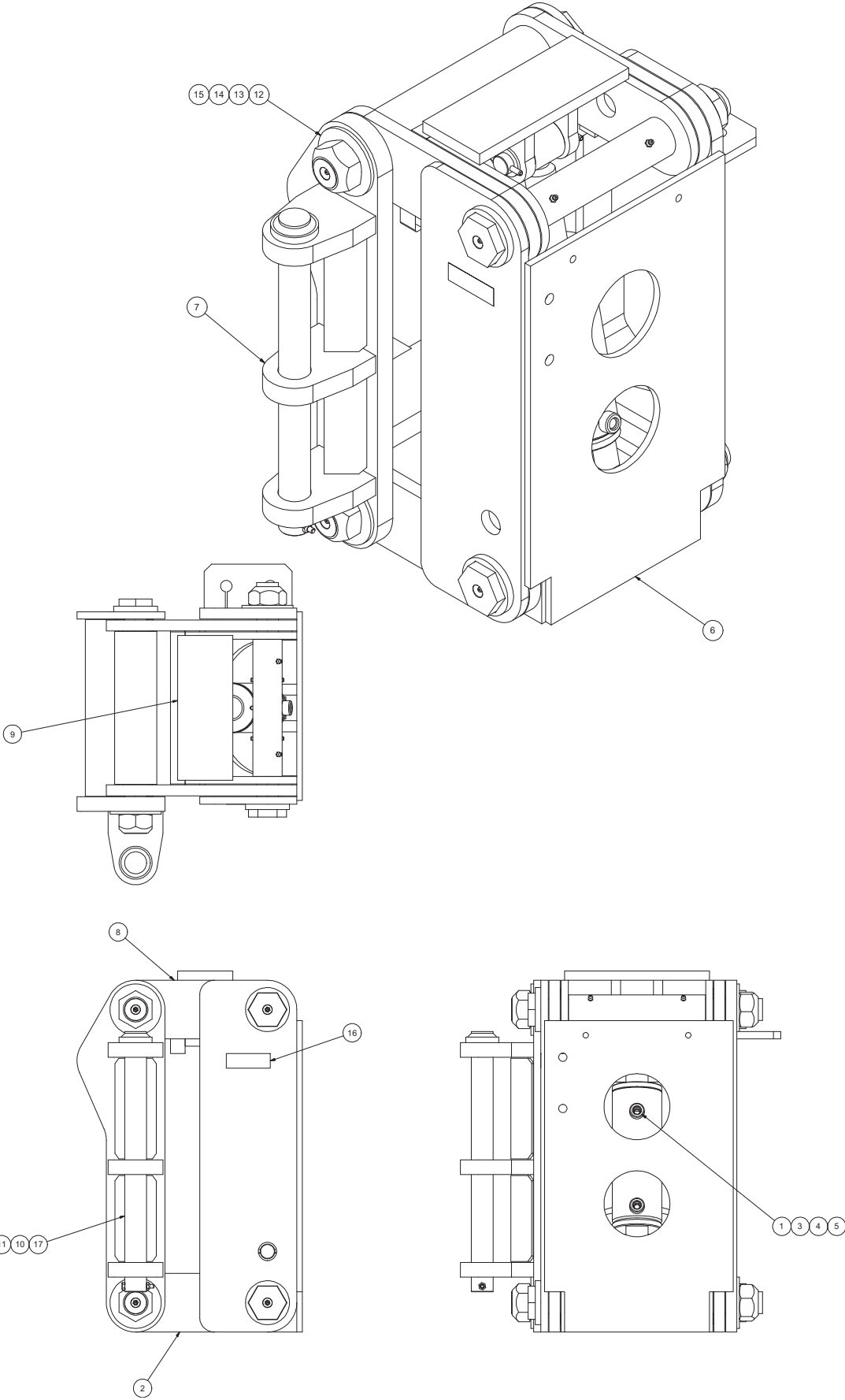
# Wing Post Assemblies



# Wing Post Assemblies

00116563 WING POST ASSEMBLY, LHMM, DF PARA				
Item	Qty.	Part Number	Description	
1	1	05003214	CYLINDER,3x5,DA,EXT WING HEEL	<i>See This Page 53</i>
2	1	00135804	ARM WLDMT,LOWER,POST,WING	
3	4	05022004	PIN .250 x 2.25 ROLL ZC	
4	4	05021202	BUSHING 1.50x1.00x10GA ZC	
5	2	00018157	PIN 1.000 x 4.500,NO HEAD,ZC	
6	1	00137864	WING POST WLDMT,LHMM,.750	
7	1	00137865	ARM WLDMT,LIFT,POST,WING,LH	
8	1	00135812	ARM WLDMT,UPPER,POST,WING	
9	1	00137850	LINK WLDMT,FLOAT,POST,WING	
10	1	01130613	ATTACHMENT PIN WLDMT,BLOCK	
11	1	05010597	BOLT .250-20 x 2.00 G8 HHCS ZC	
12	1	05020899	NUT .250-20 GC TOPLOCK C&W	
13	4	05021318	WASHER 1.500 FLAT ZC	
14	4	05020806	NUT 1.50-6 GC TOPLOCK C&W	
15	8	05050288	GREASE ZERK,.250-28 STRAIGHT	
16	4	00136886	BOLT,PARAGLIDE,15.125	
17	1	05053301	DECAL,1"X4", BLACK/WHITE, PARA	

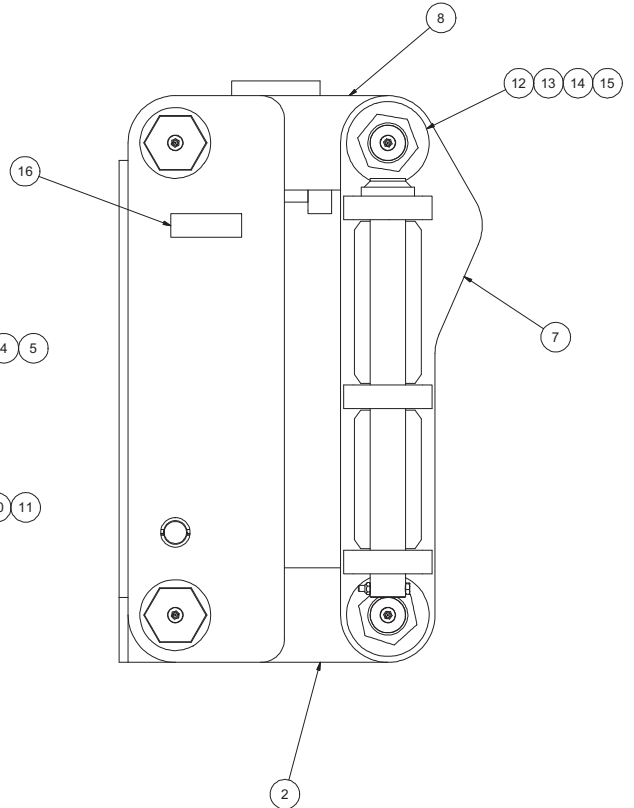
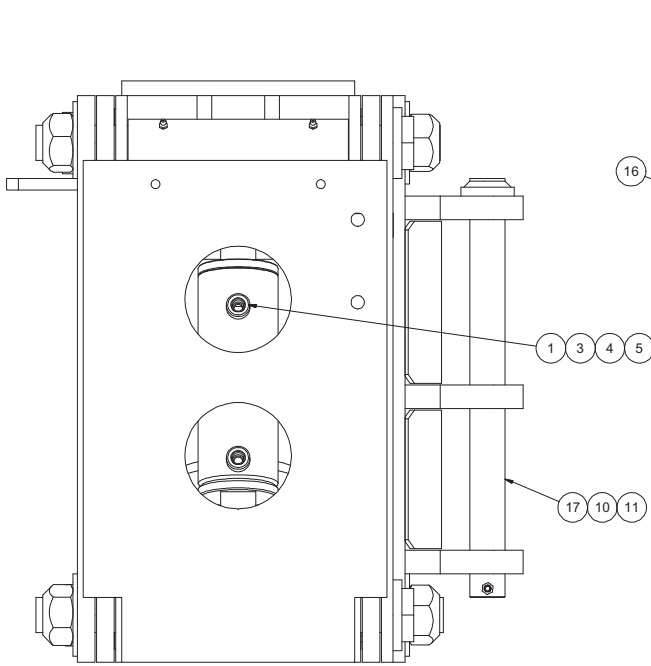
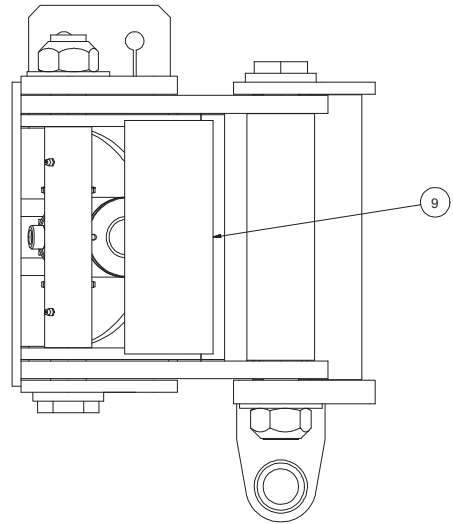
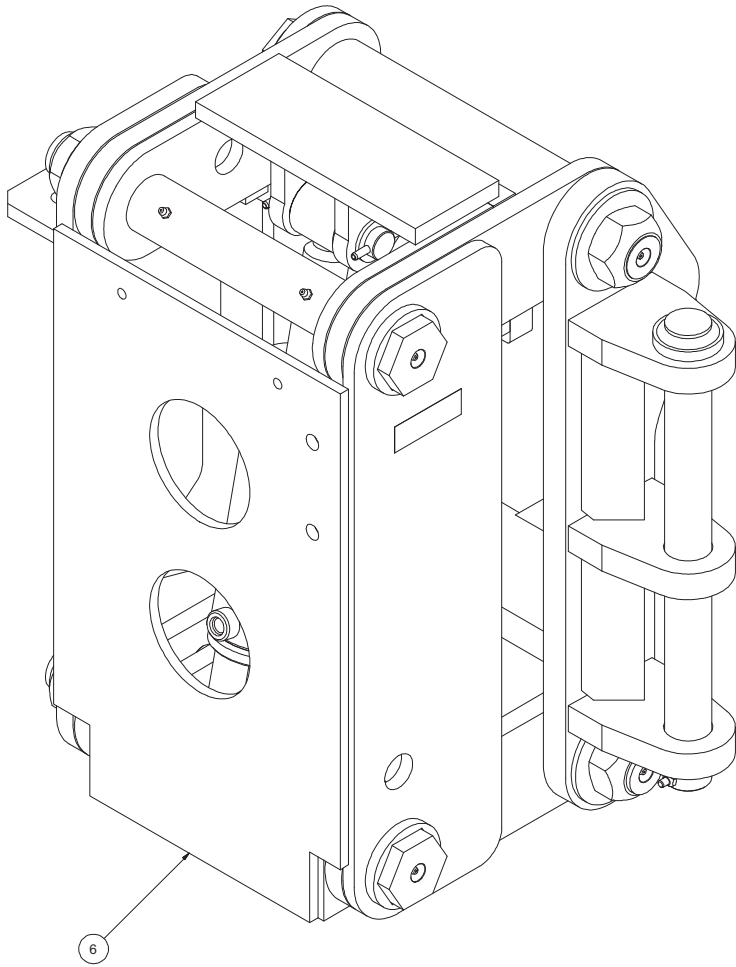
# Wing Post Assemblies



# Wing Post Assemblies

00142280 WING POST ASSEMBLY, RHMM, DF 1.563				
Item	Qty.	Part Number	Description	
1	1	05003214	CYLINDER,3x5,DA,EXT WING HEEL	<i>See This Page 53</i>
2	1	00135804	ARM WLDMT,LOWER,POST,WING	
3	4	05022004	PIN .250 x 2.25 ROLL ZC	
4	4	05021202	BUSHING 1.50x1.00x10GA ZC	
5	2	00018157	PIN 1.000 x 4.500,NO HEAD,ZC	
6	1	00135800	WING POST WLDMT,RHMM,.750	
7	1	00142283	ARM WLDMT,LIFT,1.563 HOLE,RH	
8	1	00135812	ARM WLDMT,UPPER,POST,WING	
9	1	00137850	LINK WLDMT,FLOAT,POST,WING	
10	1	05010597	BOLT .250-20 x 2.00 G8 HHCS ZC	
11	1	05020899	NUT .250-20 GC TOPLOCK C&W	
12	4	05021318	WASHER 1.500 FLAT ZC	
13	4	05020806	NUT 1.50-6 GC TOPLOCK C&W	
14	8	05050288	GREASE ZERK,.250-28 STRAIGHT	
15	4	00136886	BOLT,PARAGLIDE,15.125	
16	1	05053301	DECAL,1"X4",WHITE/BLACK, PARA	
17	1	00095076	PIN WLDMT,MTG BLOCK,JR WING	

# Wing Post Assemblies



# Wing Post Assemblies

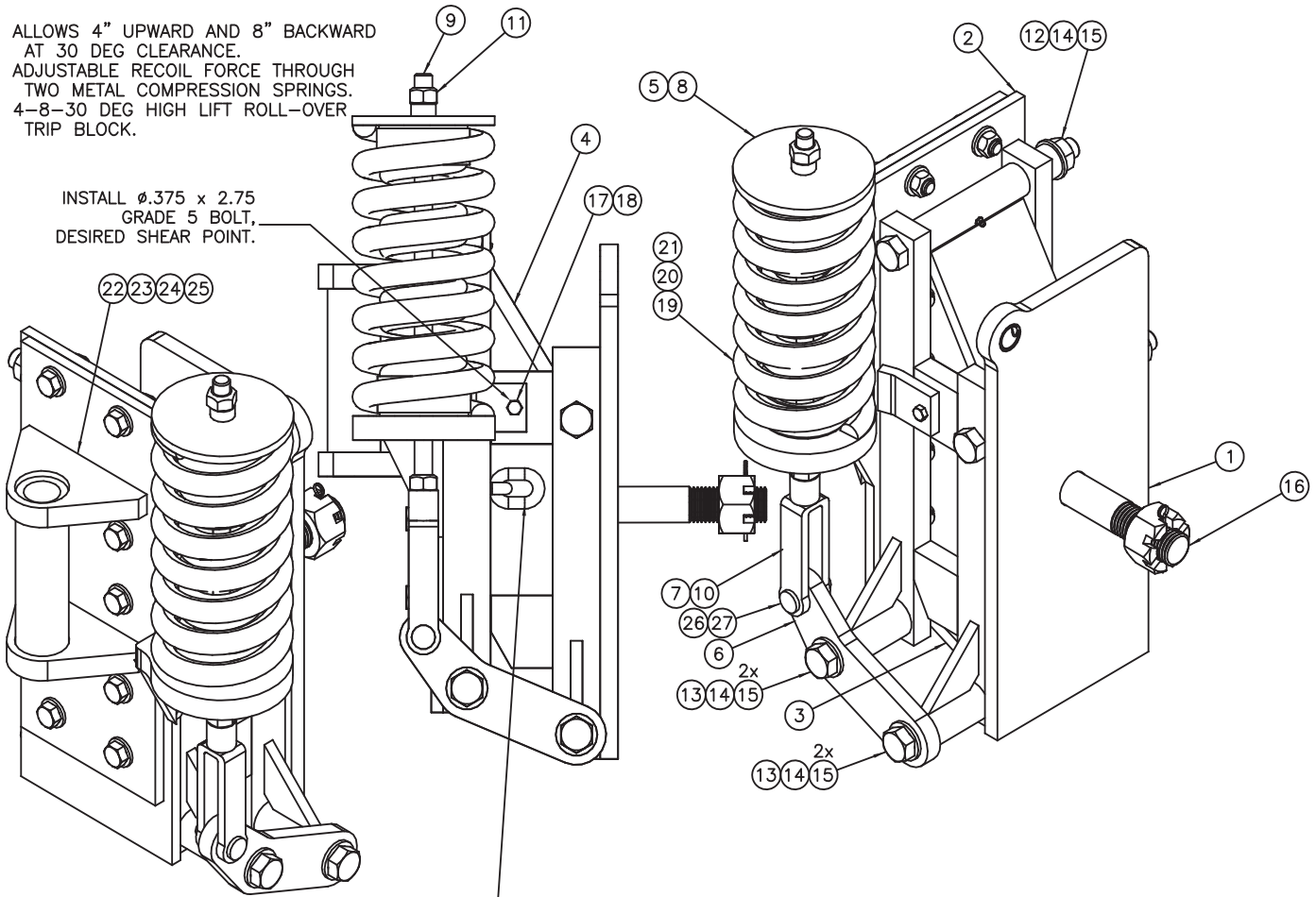
00142281 WING POST ASSEMBLY, LHMM, DF, 1.563				
Item	Qty.	Part Number	Description	
1	1	05003214	CYLINDER,3x5,DA,EXT WING HEEL	<i>See This Page 53</i>
2	1	00135804	ARM WLDMT,LOWER,POST,WING	
3	4	05022004	PIN .250 x 2.25 ROLL ZC	
4	4	05021202	BUSHING 1.50x1.00x10GA ZC	
5	2	00018157	PIN 1.000 x 4.500,NO HEAD,ZC	
6	1	00137864	WING POST WLDMT,LHMM,.750	
7	1	00142282	ARM WLDMT,LIFT,1.563 HOLE,LH	
8	1	00135812	ARM WLDMT,UPPER,POST,WING	
9	1	00137850	LINK WLDMT,FLOAT,POST,WING	
10	1	05010597	BOLT .250-20 x 2.00 G8 HHCS ZC	
11	1	05020899	NUT .250-20 GC TOPLOCK C&W	
12	4	05021318	WASHER 1.500 FLAT ZC	
13	4	05020806	NUT 1.50-6 GC TOPLOCK C&W	
14	8	05050288	GREASE ZERK,.250-28 STRAIGHT	
15	4	00136886	BOLT,PARAGLIDE,15.125	
16	1	05053301	DECAL,1"X4", BLACK/WHITE, PARA	
17	1	00095076	PIN WLDMT,MTG BLOCK,JR WING	



# Mounting Block Assemblies

ALLOWS 4" UPWARD AND 8" BACKWARD  
AT 30 DEG CLEARANCE.  
ADJUSTABLE RECOIL FORCE THROUGH  
TWO METAL COMPRESSION SPRINGS.  
4-8-30 DEG HIGH LIFT ROLL-OVER  
TRIP BLOCK.

INSTALL  $\phi.375 \times 2.75$   
GRADE 5 BOLT,  
DESIRED SHEAR POINT.



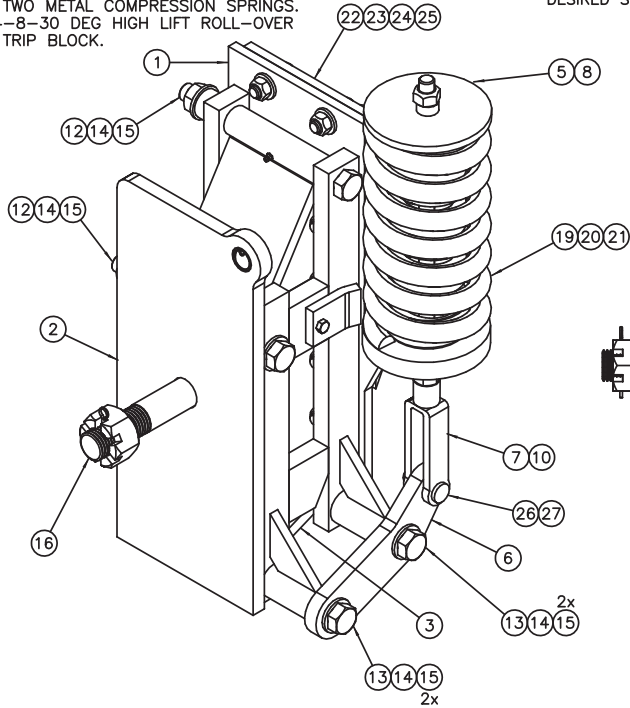
WITH BLOCK IN FULL TRIP POSITION,  
WELD LAST LINK OF CHAIN TO PLOW PORTION.  
DESIRED LIMITING STRAP/SAFETY DEVICE.

# Mounting Block Assemblies

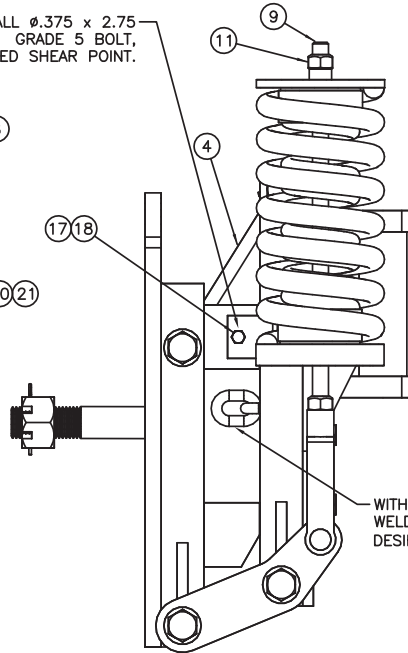
00120170 MTG BLOCK ASSY, JR WING, FULL TRIP, RH			
Item	Qty.	Part Number	Description
1	1	00120160	BLOCK WLDMT, MTG, FULL TRIP, JR
2	1	00125189	BLOCK WLDMT, MTG, FULL TRIP, JR
3	1	00021590	LINKAGE ASSY, WING, 5.0, MTG BRKT
4	1	00021591	LINKAGE ASSY, WING, 8.750, MTG BRKT
5	1	00021588	CAP ASSY MTG BRKT WING
6	1	00125186	LEVER, BLOCK, MTG, TRIP, FULL, JR
7	1	05050180	CLEVIS, .750-16x6
8	1	00122517	SPACER WLDMT, UPPER, WING, JR
9	1	00120163	ROD, .750-16x18.25, 2.5&4.25 THREADED END
10	1	05020327	NUT .750-16 G8 HEX ZC
11	1	05020987	NUT .750-16 GC TOPLOCK C&W
12	2	05017144	BOLT .875-9 x 10.500 G8 HHCS ZC
13	2	05017145	BOLT .875-9 x 14.000 G8 HHCS ZC
14	6	05020969	NUT .875-9 GC TOPLOCK C&W
15	6	05021019	WASHER .875 MIL-CARB SAE ZINC
16	1	05016987	BOLT 1.50-6 x 7.50 G8 ZC W/CASTLE NUT
17	2	05010356	BOLT .375-16 x 2.750 G5 HHCS ZC
18	2	05020898	NUT .375-16 GC TOPLOCK C&W
19	1	05035105	SPRING, COMP, 3.687 OD, 12.0 OAL, .656 WIRE
20	1	05035106	SPRING, COMP, 6.0 OD, 12.0 OAL, 1.0 WIRE
21	1	00122519	SPACER WLDMT, LOWER, WING, JR
22	1	00125190	BLOCK WLDMT, MTG, FULL TRIP, JR
23	10	05010740	BOLT .625-11 x 2.250 G8 HHCS ZC
24	20	05021007	WASHER .625 FLAT MIL-CARB ZC
25	10	05020837	NUT .625-11 GC TOPLOCK C&W
26	1	05022107	PIN .75 x 2.313 CLEVIS
27	1	05022199	PIN .1563 x 1 COTTER ZC

# Mounting Block Assemblies

ALLOWS 4" UPWARD AND 8" BACKWARD  
AT 30 DEG CLEARANCE.  
ADJUSTABLE RECOIL FORCE THROUGH  
TWO METAL COMPRESSION SPRINGS.  
4-8-30 DEG HIGH LIFT ROLL-OVER  
TRIP BLOCK.



INSTALL  $\phi.375 \times 2.75$   
GRADE 5 BOLT,  
DESIRED SHEAR POINT.



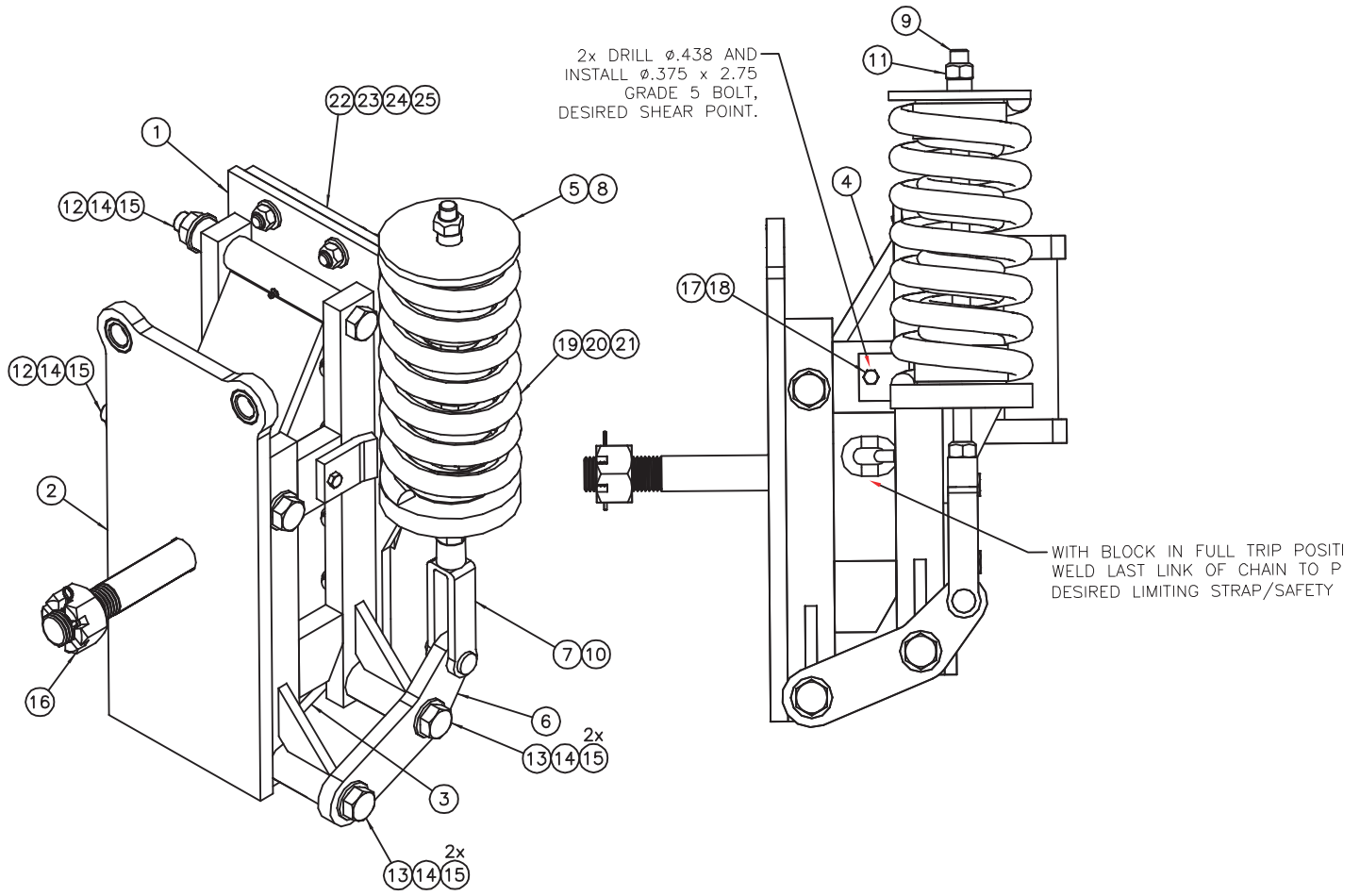
WITH BLOCK IN FULL TRIP POSITION,  
WELD LAST LINK OF CHAIN TO PLOW PORTION.  
DESIRED LIMITING STRAP/SAFETY DEVICE.

# Mounting Block Assemblies

00122520 MTG BLOCK ASSY, JR WING, FULL TRIP, LH			
Item	Qty.	Part Number	Description
1	1	00125192	BLOCK WLDMT, MTG, FULL TRIP, LH, JR
2	1	00122521	BLOCK WLDMT, MTG, FULL TRIP, LH, JR
3	1	00021590	LINKAGE ASSY, WING, 5.0, MTG BRKT
4	1	00021591	LINKAGE ASSY, WING, 8.750, MTG BRKT
5	1	00021588	CAP ASSY MTG BRKT WING
6	1	00125186	LEVER, BLOCK, MTG, TRIP, FULL, JR
7	1	05050180	CLEVIS, .750-16x6
8	1	00122517	SPACER WLDMT, UPPER, WING, JR
9	1	00120163	ROD, .750-16x18.25, 2.5&4.25 THREADED END
10	1	05020327	NUT .750-16 G8 HEX ZC
11	1	05020987	NUT .750-16 GC TOPLOCK C&W
12	2	05017144	BOLT .875-9 x 10.500 G8 HHCS ZC
13	2	05017145	BOLT .875-9 x 14.000 G8 HHCS ZC
14	6	05020969	NUT .875-9 GC TOPLOCK C&W
15	6	05021019	WASHER .875 MIL-CARB SAE ZINC
16	1	05016987	BOLT 1.50-6 x 7.50 G8 ZC W/CASTLE NUT
17	2	05010356	BOLT .375-16 x 2.750 G5 HHCS ZC
18	2	05020898	NUT .375-16 GC TOPLOCK C&W
19	1	05035105	SPRING, COMP, 3.687 OD, 12.0 OAL, .656 WIRE
20	1	05035106	SPRING, COMP, 6.0 OD, 12.0 OAL, 1.0 WIRE
21	1	00122519	SPACER WLDMT, LOWER, WING, JR
22	1	00125190	BLOCK WLDMT, MTG, FULL TRIP, JR
23	10	05010740	BOLT .625-11 x 2.250 G8 HHCS ZC
24	20	05021007	WASHER .625 FLAT MIL-CARB ZC
25	10	05020837	NUT .625-11 GC TOPLOCK C&W
26	1	05022107	PIN .75 x 2.313 CLEVIS
27	1	05022199	PIN .1563 x 1 COTTER ZC

# Mounting Block Assemblies

## OLD STYLE MOUNTING BLOCK ASSEMBLY



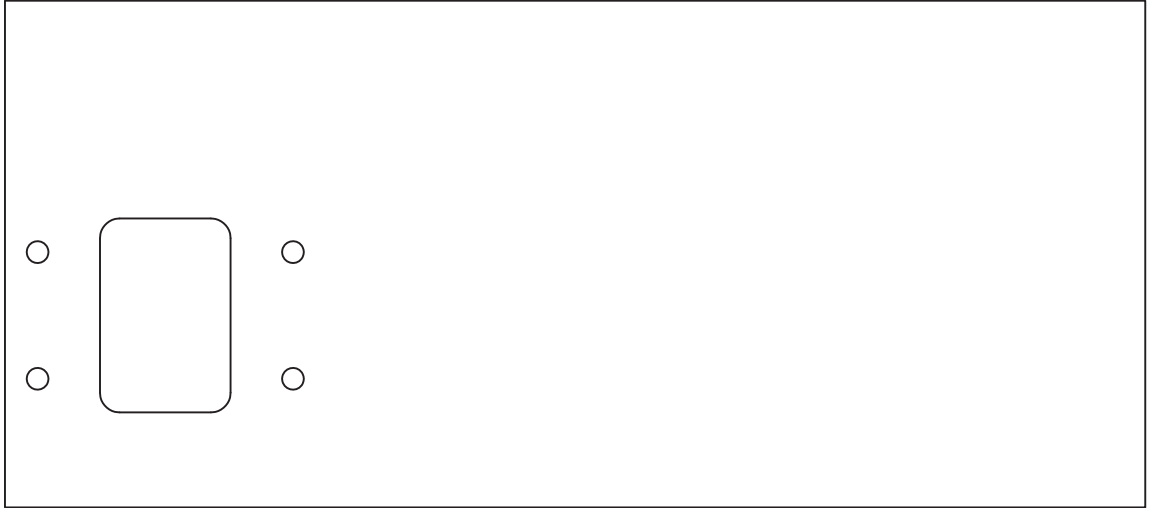
# Mounting Block Assemblies

00125193 MOUNTING BLOCK ASSEMBLY, JR WING FULL TRIP, RH, TAPERED			
00125194 MOUNTING BLOCK ASSEMBLY, JR WING FULL TRIP, LH TAPERED			
Item	Qty	Part Number	Description
1	1	00120160 00125192	BLOCK WELDMENT, MTG, FULL TRIP, RH BLOCK WELDMENT, MTG, FULL TRIP, LH
2	1	00125189 00122521	BLOCK WELDMENT, MTG, FULL TRIP, RH BLOCK WELDMENT, MTG, FULL TRIP, LH
3	1	00021590	LINKAGE ASSEMBLY, 5.0
4	1	00021591	LINKAGE ASSEMBLY, 8.750
5	1	00021588	CAP ASSEMBLY, MTG BRACKET
6	1	00125186	LEVER MOUNTING BRACKET
7	1	05050180	CLEVIS, .750-16 X 6
8	1	00122517	SPACER WELDMENT, UPPER
9	1	00120163	ROD, .750-16 X 18.25, 2.5 & 4.25 THREADED END
10	1	05020327	NUT, .750-16, G8, HEX, ZINC
11	1	05020987	NUT, .750-16, GC, TOPLOCK, C&W
12	2	05017144	BOLT, .875-9 X 10.5, G8, HHCS, ZINC
13	2	00120162	BOLT, .875-9 X 14, G8, HHCS, ZINC
14	8	05020969	NUT, .875-9, GC, TOP LOCK, C&W
15	8	05021019	WASHER, .875, MIL-CARB, SAE, ZINC
16	1	00040260	BOLT, 1.5-6 X 9, G8, ZINC
17	2	05010356	BOLT, .375-16 X 2.750, G5, HHCS, ZINC
18	2	05020898	NUT, .375-16, GC, TOP LOCK, C&W
19	1	05035105	SPRING, COMPRESSION, 3.687 OD, 12
20	1	05035106	SPRING COMPRESSION, 6.0 OD
21	1	00122519	SPACER WELDMENT, LOWER
22	1	00125190	BLOCK WELDMENT, MTG, FULL TRIP, JR
23	10	05010739	BOLT, .625-11 X 2, G8, HHCS, ZINC
24	20	05021007	WASHER, .625, FLAT, MIL-CARB, ZINC
25	10	05020837	NUT, .625-11, GC, TOP LOCK, C&W

# Side Plates

---

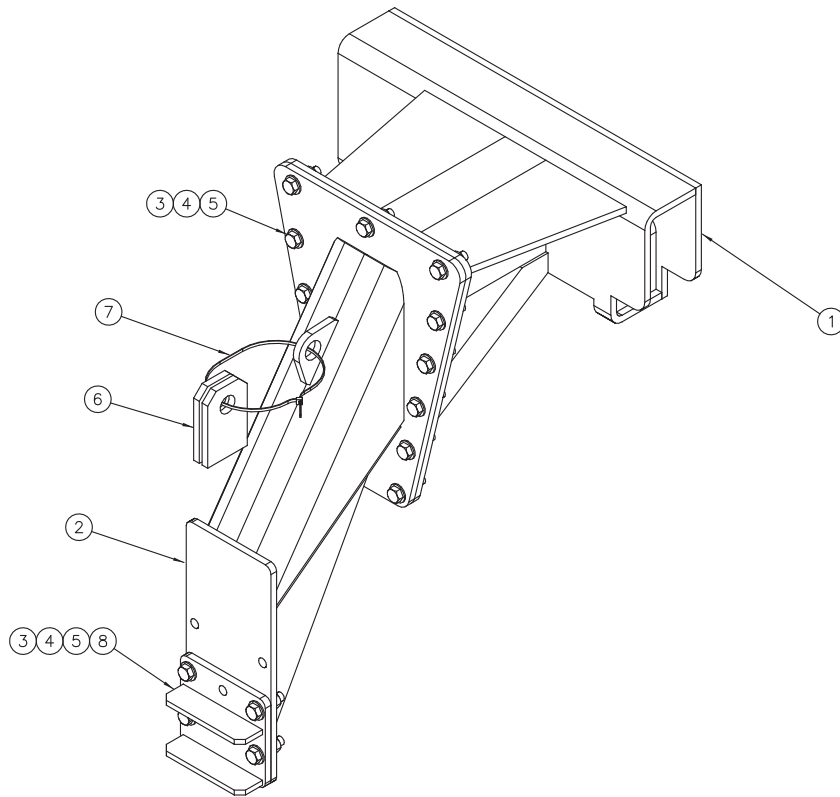
**00063035 SIDE PLATE, REAR, 16 X 36**



**00000193 SIDE PLATE, FRONT, 12 X 36**



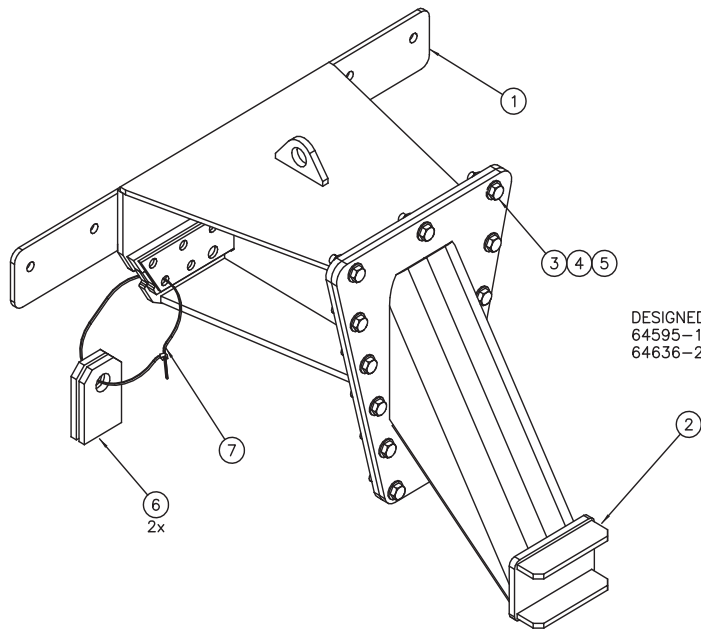
# Side Plates



00158165 SIDE PLATE ASSEMBLY, BOLT-ON, RHRR			
ITEM	QTY	PART NUMBER	DESCRIPTION
1	1	00158161	SIDE PLATE WLDMT,BOLT-ON,FRAME
2	1	00156163	SIDE PL WLDMT,BOLT-ON,REAR
3	17	05010740	BOLT .625-11 x 2.25 G8 HHCS ZC
4	17	05020837	NUT .625-11 GC TOPLOCK C&W
5	34	05021017	WASHER .625 FLAT MIL-CARB SAE
6	2	00073123-B	EAR,MTG,1.313DIA,.500,MS,PNT,
7	1	05050608	CABLE TIE,HD,14Lx.3W,BLACK,120
8	1	00156167	MOUNT WLDMT,PUSHARM,WING



# Side Plates

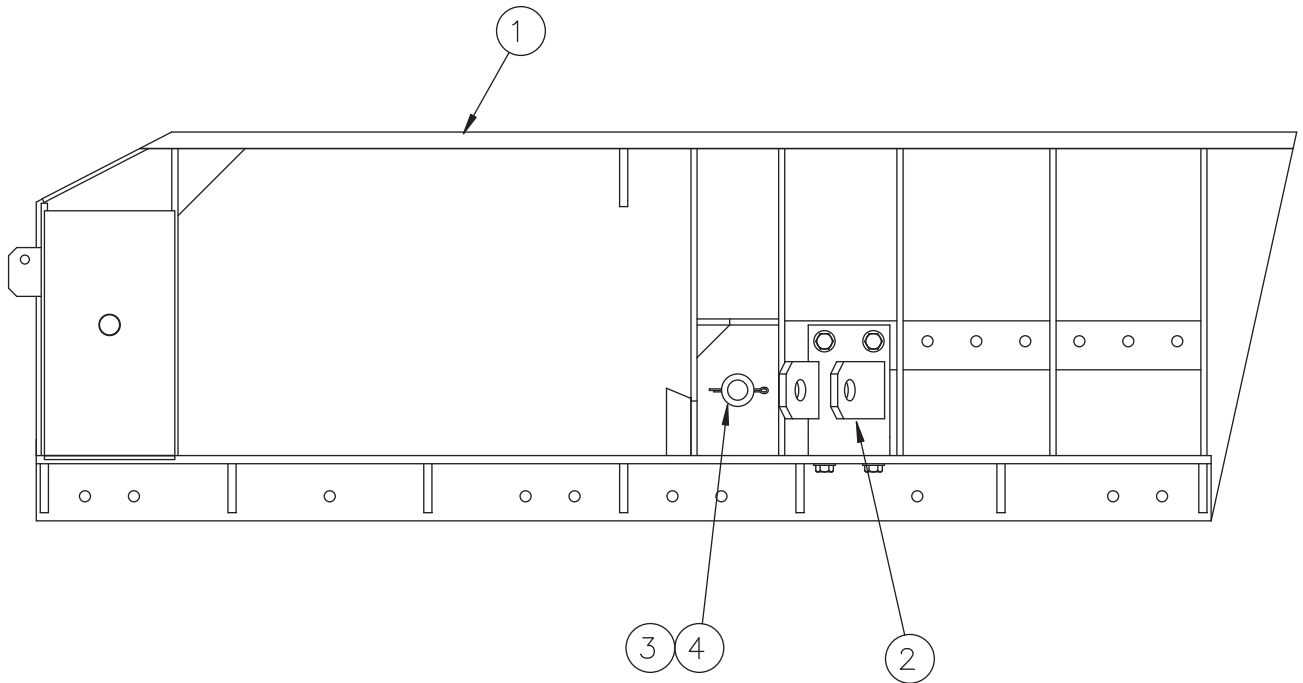


DESIGNED TO FIT HENDRICKSON HAULMAXX BRACKETS:  
64595-101F WHICH FITS INTERNATIONAL  
64636-2 WHICH FITS FREIGHTLINER

## 00129530 SIDE PLATE ASSEMBLY, BOLT-ON, RH/LH, SD

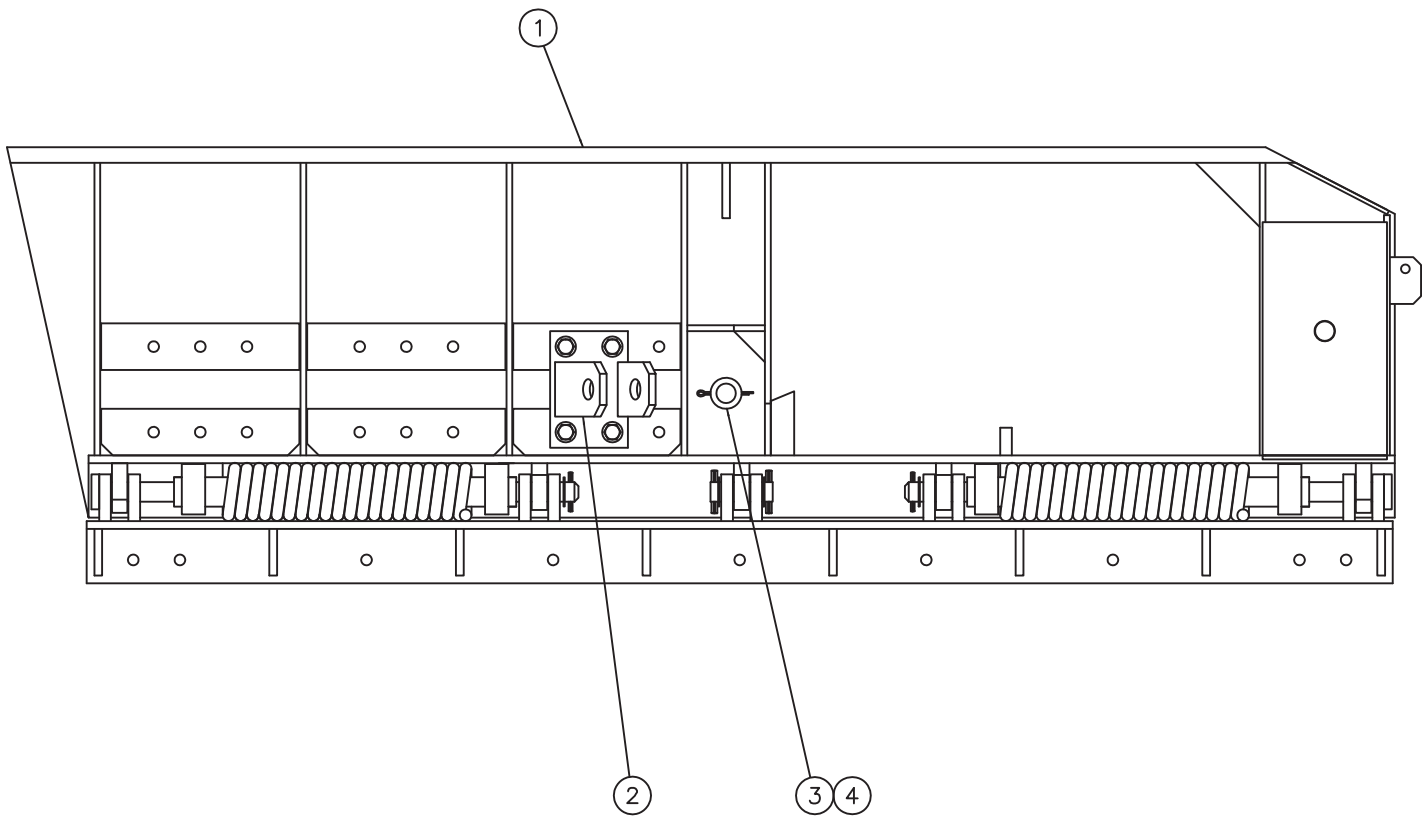
ITEM	QTY	PART NUMBER	DESCRIPTION
1	1	00132262	MOUNT WLDMT,REAR,HAULMAXX
2	1	00101677	SIDE PL WLDMT,BOLT-ON,REAR,RH,
3	13	05010740	BOLT .625-11 x 2.25 G8 HHCS ZC
4	26	05021017	WASHER .625 FLAT MIL-CARB SAE
5	13	05020837	NUT .625-11 GC TOPLOCK C&W
6	2	00073123-B	EAR,MTG,1.313DIA, .500,MS,PNT,
7	1	05050608	CABLE TIE,HD,14Lx.3W,BLACK,120

# Moldboard Assemblies



MOLDBOARD ASSEMBLIES			
Item	Qty	Part Number	Description
1	1	00027185	Moldboard Weldment, 6', RH
		00027186	Moldboard Weldment, 7', RH
		00063036	Moldboard Weldment, 8', RH
		00027198	Moldboard Weldment, 9', RH
		00027199	Moldboard Weldment, 10', RH
		00045379	Moldboard Weldment, 6', LH
		00050108	Moldboard Weldment, 7', LH
		00050109	Moldboard Weldment, 8', LH
		00107336	Moldboard WEldment, 8', LH, 10ga, Straight, .75
		00050110	Moldboard Weldment, 9', LH
		00050111	Moldboard Weldment, 10', LH
2	1	00082726	Bracket, Pusharm, Wing Mount, RH Mount
		00082727	Bracket, Pusharm, Wing Mount, LH Mount
3	1	00063059	Pin Assembly
4	1	05022005	Pin, ¼ x 3, Cotter, Zinc
5	1	00055962	Decal Kit, Plow See page 48

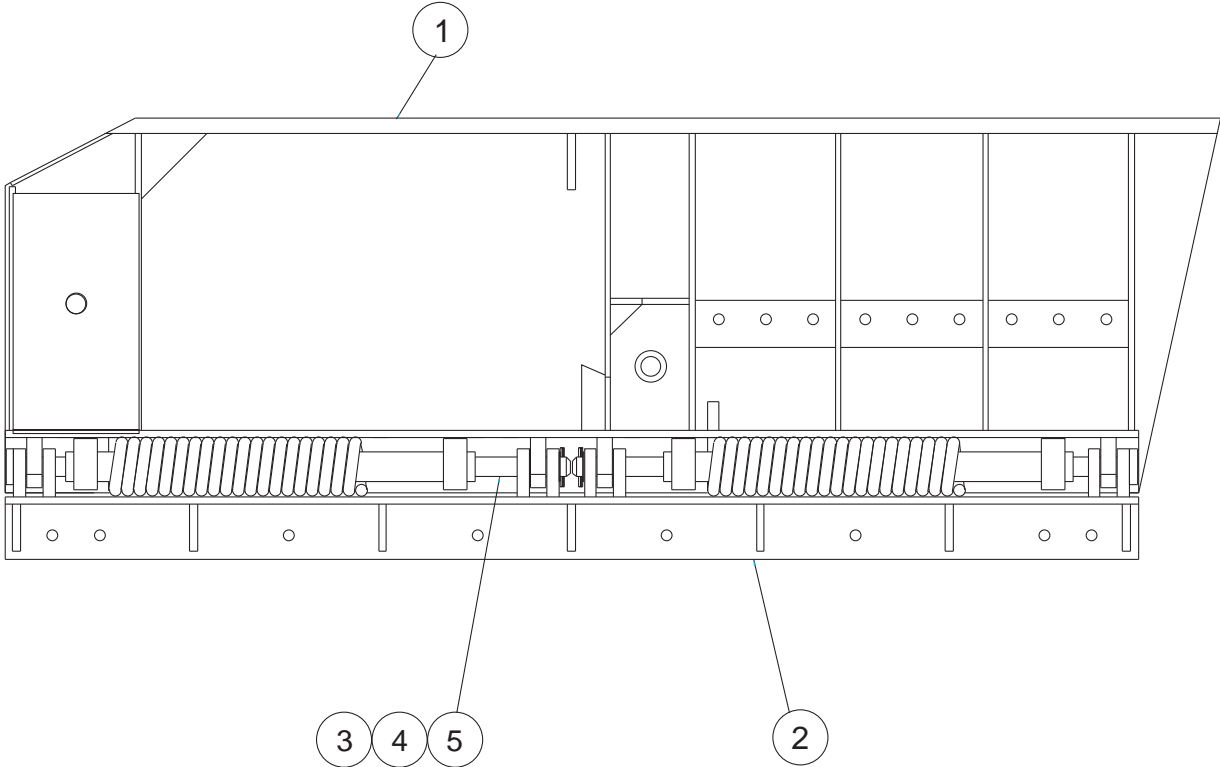
# Moldboard Assemblies



## MOLBOARD ASSEMBLY, 6' JUNIOR WING, RH& LH MOUNT MOLDBOARD ASSEMBLY, 7' JUNIOR WING, LH MOUNT

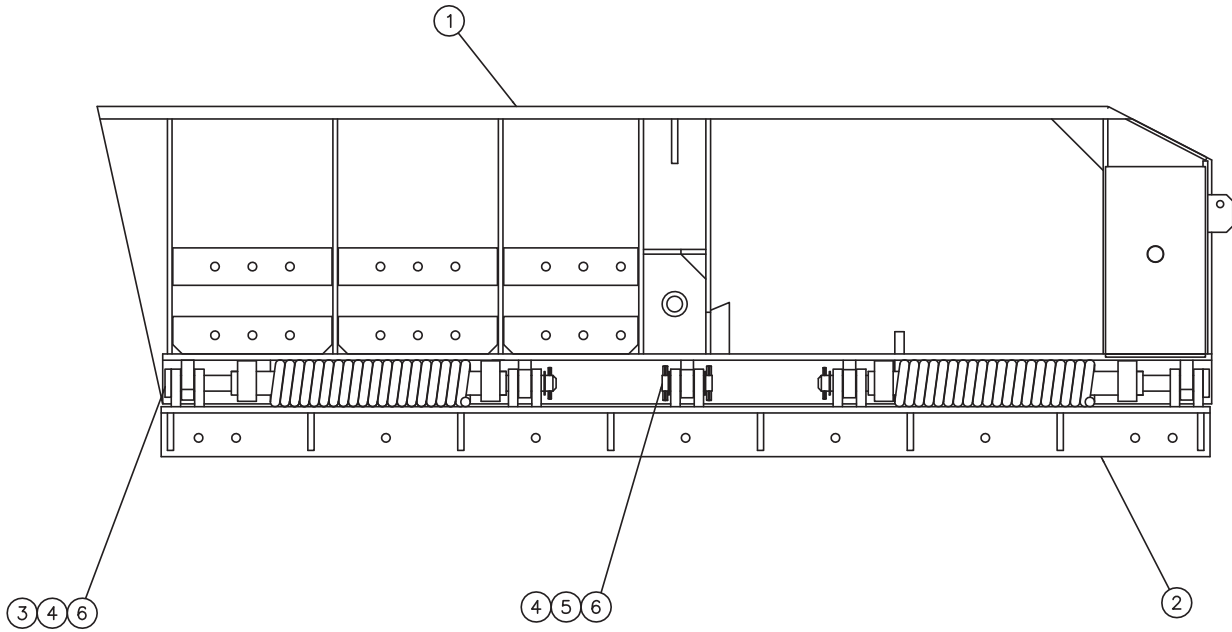
Item	Qty	Part Number	Description
1	1	00077911	Moldboard Sub Assembly, Wing, 6', Trip Edge, RH See page 33
		00077916	Moldboard Sub Assembly, Wing, 6', Trip Edge, LH See page 33
		00077910	Moldboard Sub Assembly, Wing, 7', Trip Edge, LH See page 34
2	1	00102297	Bracket, Pusharm, Wing Mount, Jr.
3	1	00063059	Pin Assembly
4	1	05022005	Pin, ¼ x 3, Cotter, Zinc
5	1	00055962	Decal Kit, Plow See page 48

# Moldboard Assemblies



<b>00077911 MOLDBOARD SUB ASSEMBLY, 6JRWMB-TRIP EDGE</b> <b>00077916 MOLDBOARD SUB ASSEMBLY, 6JRWMB-TRIP EDGE-LEFT</b>			
Item	Qty	Part Number	Description
1	1	00038826	Moldboard Weldment, 6'
	1	00050120	Moldboard Weldment, 6', Left
2	1	00038832	Trip Section Weldment, 6'
3	2	00038833	Pivot Rod Weldment
4	2	05022039	Pin, 5/16 x 2, Roll, Zinc
5	2	05021191	Washer, 1 1/4, Machine, Zinc

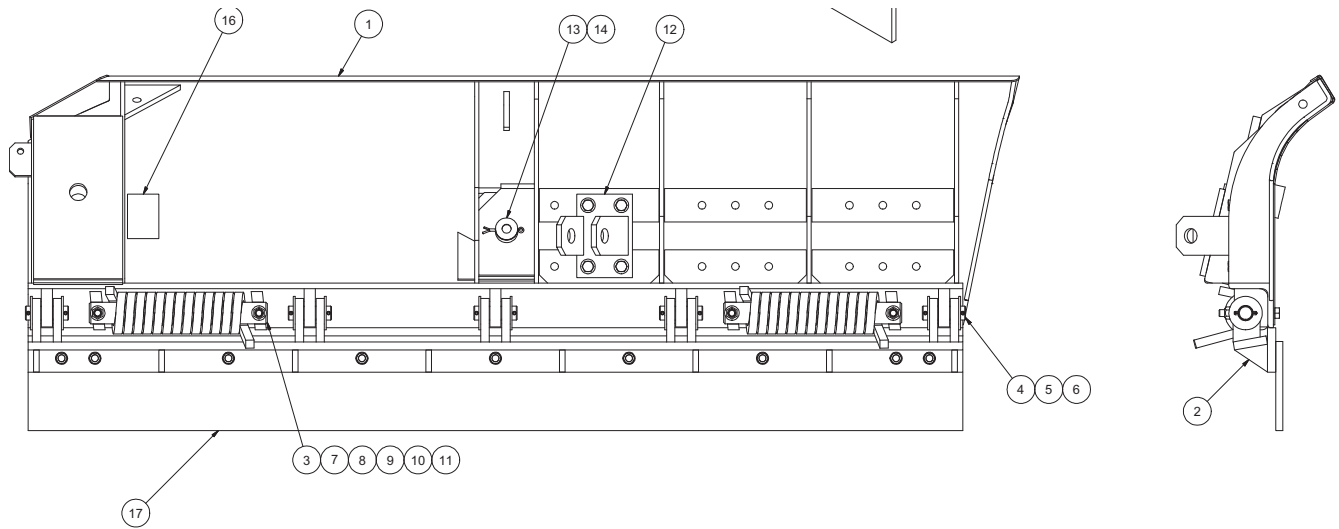
# Moldboard Assemblies



## 00077910 MOLDBOARD SUB ASSEMBLY, 7JRWMB-TRIP EDGE-LEFT

Item	Qty	Part Number	Description
1	1	00043599	Moldboard Weldment, 7', Left
2	1	00038836	Trip Section Weldment, 7'
3	2	00038838	Pivot Rod Weldment
4	4	05022039	Pin, $\frac{5}{16}$ x 2, Roll, Zinc
5	1	00033117	Pin, $1\frac{1}{4}$ x 4
6	4	05021191	Washer, $1\frac{1}{4}$ , Machine, Zinc

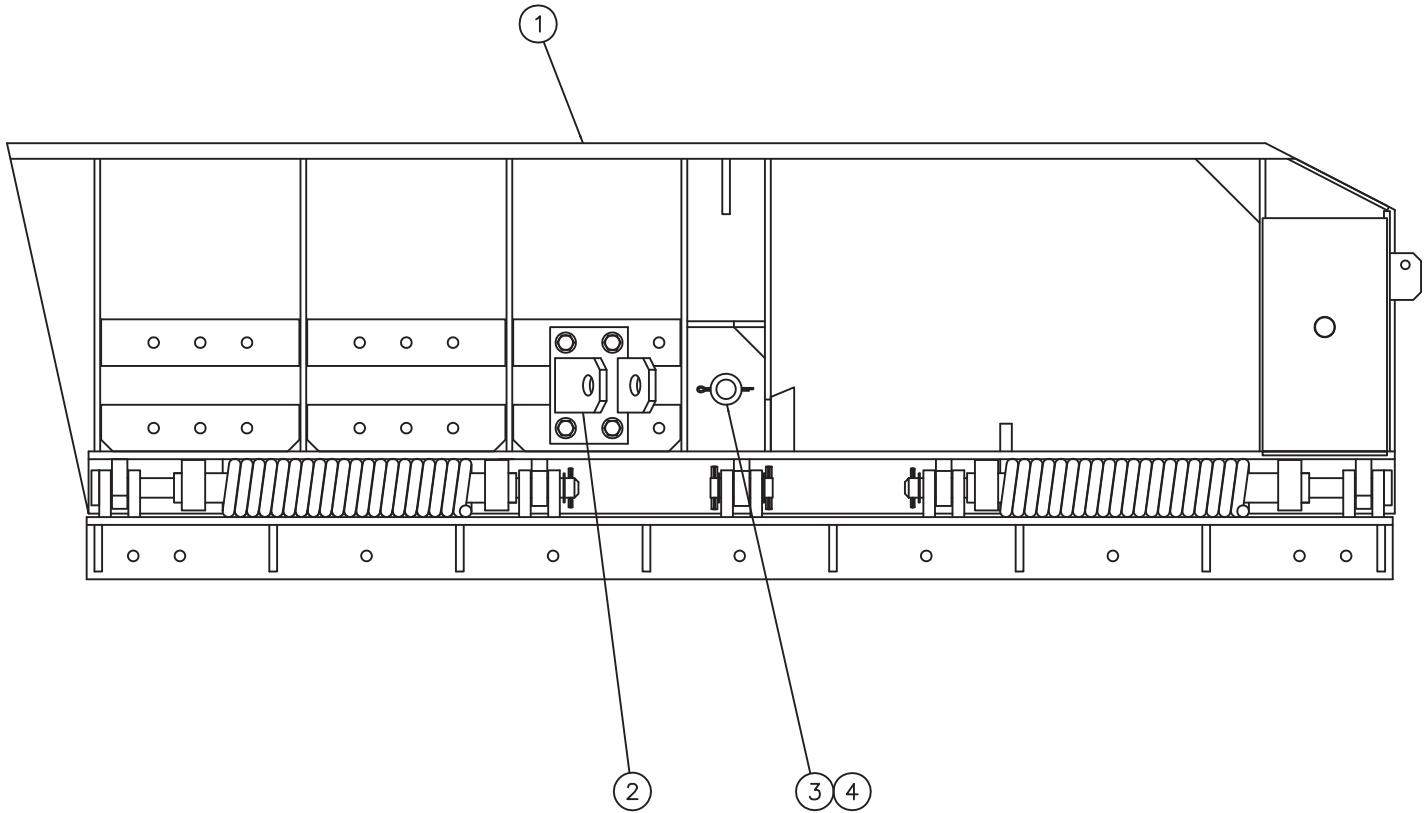
# Moldboard Assemblies



## 00138207 MOLDBOARD ASSEMBLY,7JRWMB-TE, 10GA, SQ SPG

Item	Qty.	Part Number	Description
1	1	00138206	MLDBD WLDMT,WING,7JRWMB-TE
2	1	00136899	TRIP EDGE WLDMT,WING,7'
3	2	00130531	PIN,1.938DIAx16.00,NO HEAD
4	5	00054787	PIN,1.25 x 3.875,NO HEAD
5	10	05021316	WASHER 1.25 FLAT ZC
6	10	05022039	PIN .313 x 2.000 ROLL ZC
7	4	00128582	SADDLE WASHER,OLET
8	4	05010749	BOLT .625-11 x 5.00 G8 HHCS ZC
9	4	05021017	WASHER .625 FLAT MIL-CARB SAE
10	4	05020837	NUT .625-11 GC TOPLOCK C&W
11	2	05035110	SPRING,TORSION,.750 SQ WIRE
12	1	00102297	BRACKET,PUSHARM,WING MNT,JR
13	1	00063059	PIN WELDMENT
14	1	05022005	PIN .250 x 3.000 COTTER
15	1	05050095	TAG,SERIAL NUMBER, STANDARD
16	1	00055962	DECAL KIT,PLOW/WING <i>See page 48</i>
17	1	00049786	CE KIT,7',.625 x 8.000,TPCS

# Moldboard Assemblies



## MOLBOARD ASSEMBLY, 8', 9' & 10', RH & LH MOUNT

Item	Qty	Part Number	Description
1	1	00077913	Moldboard Sub Assembly, Wing, 8', Trip Edge, RH See page 37
		00077917	Moldboard Sub Assembly, Wing, 8', Trip Edge, LH See page 37
		00077914	Moldboard Sub Assembly, Wing, 9', Trip Edge, RH See page 37
		00077918	Moldboard Sub Assembly, Wing, 9', Trip Edge, LH See page 37
		00077915	Moldboard Sub Assembly, Wing, 10', Trip Edge, RH See page 37
		00077919	Moldboard Sub Assembly, Wing, 10', Trip Edge, LH See page 37
2	1	00082726	Bracket, Pusharm, Wing Mount, RH
		00082727	Bracket, Pusharm, Wing Mount, LH
3	1	00063059	Pin Assembly
4	1	05022005	Pin, ¼ x 3, Cotter, Zinc
5	1	00055962	Decal Kit, Plow See page 48

# Moldboard Assemblies

## 00077913 MOLDBOARD SUB ASSEMBLY, 8JRWMB-TRIP EDGE 00077917 MOLDBOARD SUB ASSEMBLY, 8JRWMB-TRIP EDGE-LEFT

Item	Qty	Part Number	Description
1	1	00038827	Moldboard Weldment, 8'
	1	00050121	Moldboard Weldment, 8', Left
2	1	00038845	Trip Section Weldment, 8'
3	2	00038847	Pivot Rod Weldment
4	4	05022039	Pin, 5/16 x 2, Roll, Zinc
5	1	00033117	Pin, 1 1/4 x 4
6	4	05021191	Washer, 1 1/4, Machine, Zinc

## 00077914 MOLDBOARD SUB ASSEMBLY, 9JRWMB-TRIP EDGE 00077918 MOLDBOARD SUB ASSEMBLY, 9JRWMB-TRIP EDGE-LEFT

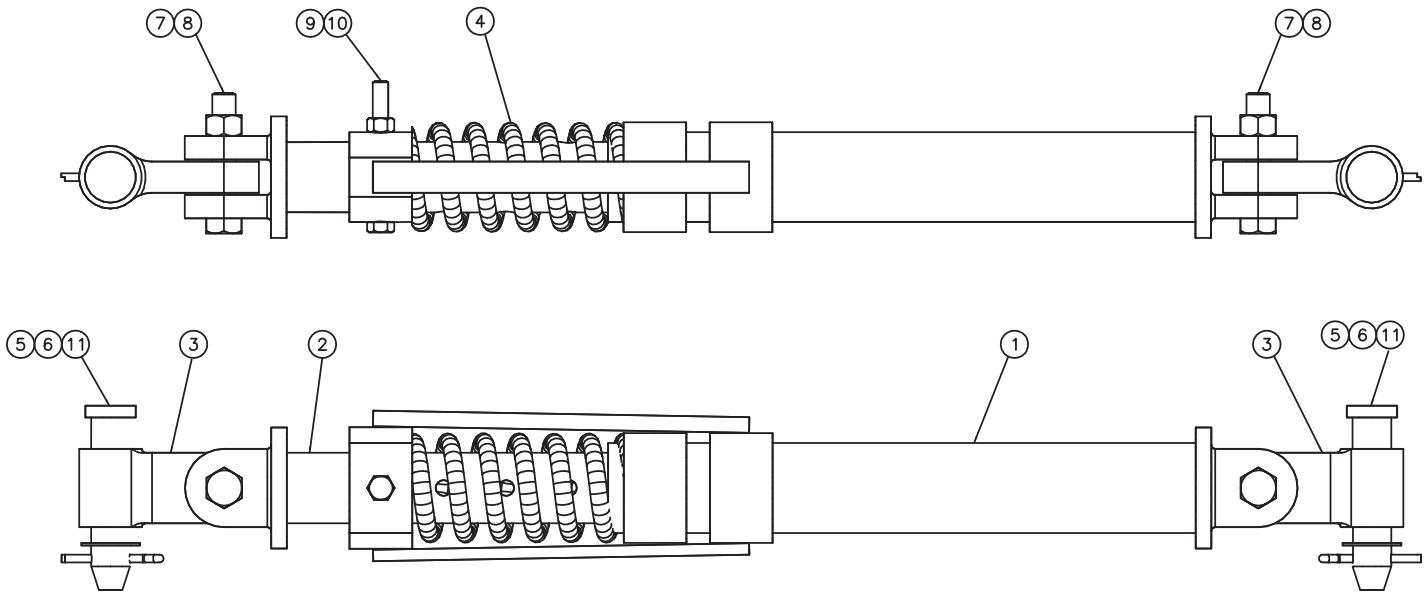
Item	Qty	Part Number	Description
1	1	00038828	Moldboard Weldment, 9'
	1	00050122	Moldboard Weldment, 9', Left
2	1	00038850	Trip Section Weldment, 4'
3	1	00038853	Trip Section Weldment, 5'
4	1	00037116	Pivot Rod Weldment, 58.625
5	1	00035230	Pivot Rod Weldment, 46.625
6	2	05022039	Pin, 5/16 x 2, Roll, Zinc
7	2	05021191	Washer, 1 1/4, Machine, Zinc

## 00077915 MOLDBOARD SUB ASSEMBLY, 10JRWMB-TRIP EDGE 00077919 MOLDBOARD SUB ASSEMBLY, 10JRWMB-TRIP EDGE-LEFT

Item	Qty	Part Number	Description
1	1	00038829	Moldboard Weldment, 10'
	1	00050123	Moldboard Weldment, 10', Left
2	2	00038853	Trip Section Weldment, 5'
4	2	00037116	Pivot Rod Weldment, 58.625
6	2	05022039	Pin, 5/16 x 2, Roll, Zinc
7	2	05021191	Washer, 1 1/4, Machine, Zinc



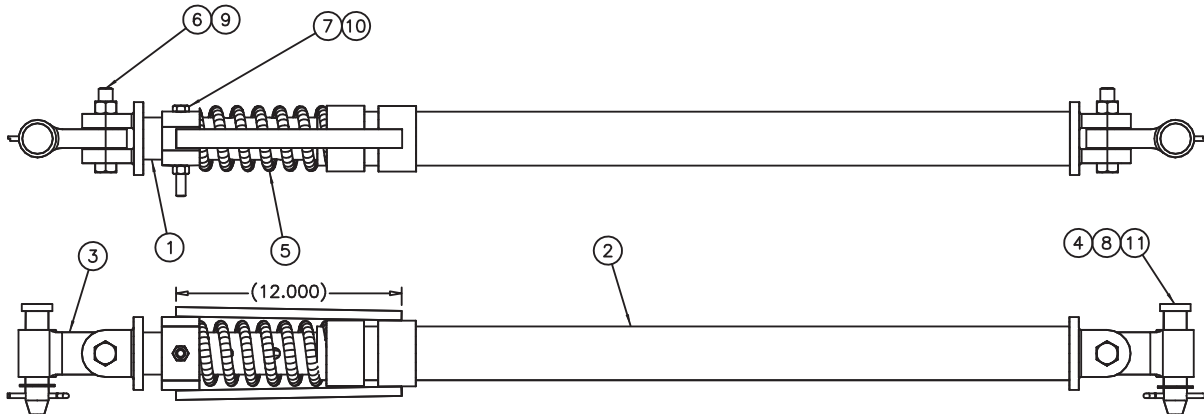
# Pusharm Assemblies



## 00063013 PUSHARM ASSEMBLY, 2.5 SCHED 80, 33.0

Item	Qty	Part Number	Description
1	1	00028822	Push Arm Weldment
2	1	00063018	Inner Rod Weldment
3	2	01130925	Swivel Connector, Cast
4	1	05035040	Compression Spring
5	2	05022089	Flat Head Pin
6	2	05022007	Pin, 1/4" x 2 1/2", Cotter, Zinc
7	2	05010772	Bolt, 3/4-10 x 4, G8, HHCS, Zinc
8	2	05020849	Nut, 3/4-10, GC, Top Lock, C&W
9	1	05010699	Bolt, 1/2-13 UNC x 3 1/2"
10	1	05020847	Nut, 1/2-13, GC, Top Lock, C&W
11	2	05021191	Bushing, Machine, 1.88 x 1.25 x 14 ga., Zinc

# Pusharm Assemblies



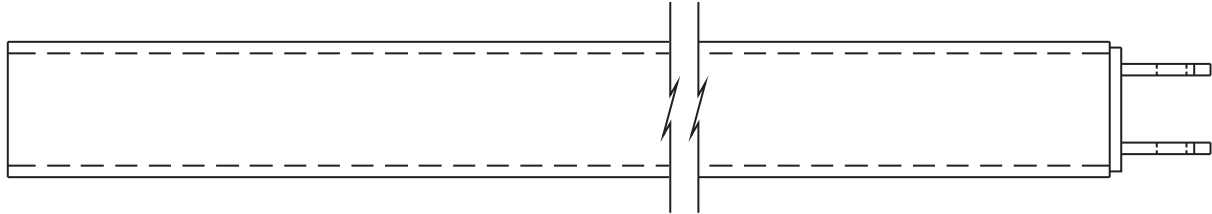
## 01130974 PUSHARM ASSEMBLY, LPA-UPA, 2.5 SCHED 80

Item	Qty	Part Number	Description
1	1	01130942	Inner Rod Weldment
2	1	01130944	Outer Pipe Weldment
3	2	01130925	Swivel Connector
4	2	05022089	Flat Head Pin
5	1	05035040	Compression Spring
6	2	05010772	Bolt, 3/4-10 x 4, G8, HHCS, Zinc
7	1	05010701	Bolt, 1/2-13 x 4, G8, HHCS, Zinc
8	2	05022006	Pin, 1/4 x 2, Cotter, Zinc
9	2	05020849	Nut, 3/4-10, GC, Top Lock, C&W
10	1	05020847	Nut, 1/2-13, GC, Top Lock, C&W

# Mounting

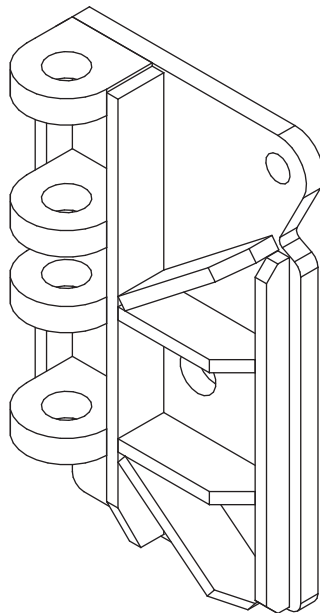
---

## 00063034 REAR MOUNTING BRACKET WELDMENT

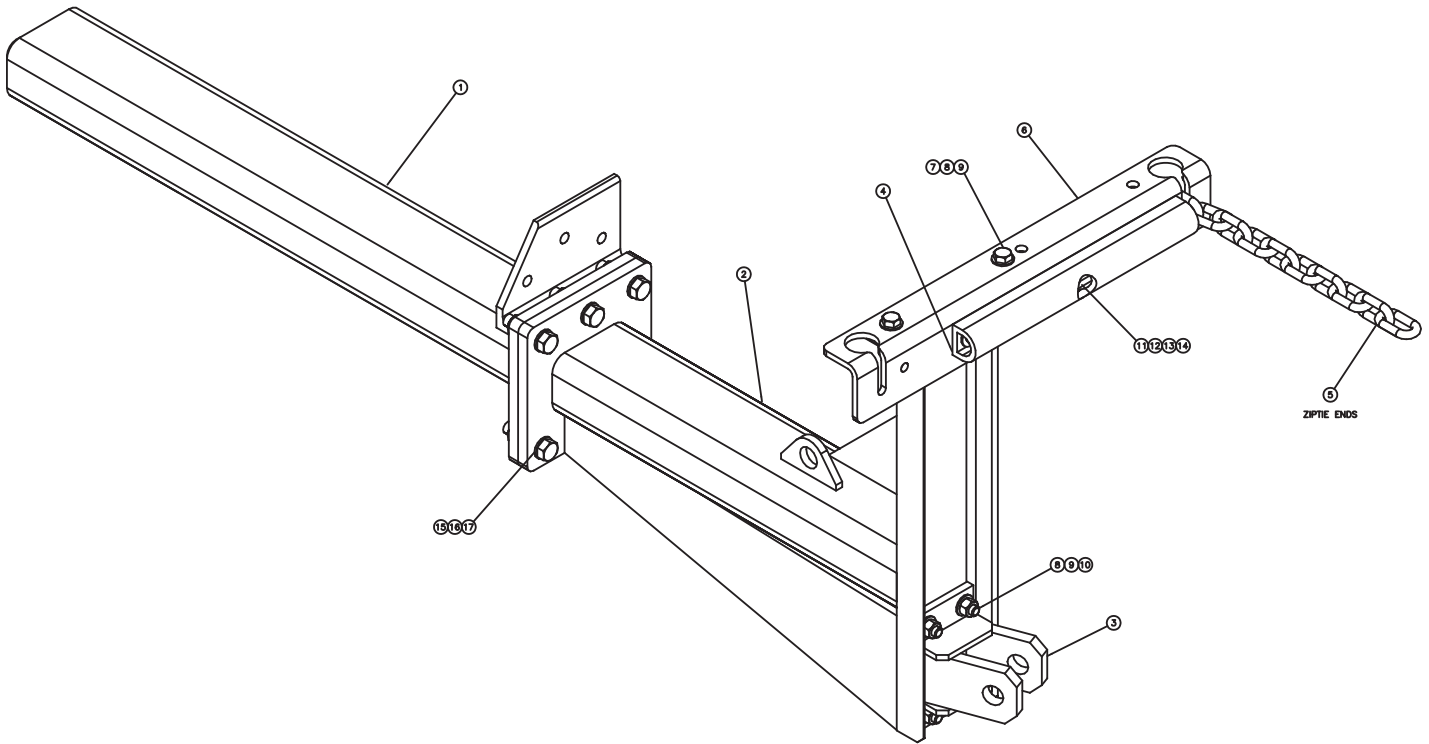


## 00018437 BRACKET WELDMENT, MOUNTING, RH

## 00018438 BRACKET WELDMENT, MOUNTING, LH



# Mounting



## 00106468 MOUNT ASSEMBLY, REAR, RH, PUSHARM

ITEM	QTY	PART NUMBER	DESCRIPTION
1	1	00106474	MOUNT WLDMT,REAR,RH
2	1	00106480	MOUNT WLDMT,REAR,ND,06
3	1	00054587	MOUNT WLDMT,PUSHARM,REAR,ND,04
4	1	00088986	RUBBER BUMPER,REAR MOUNT,ND
5	1	00030184	CHAIN GR43 .375 x 38 LINKS
6	1	00088982	KEYHOLE PL,REAR MOUNT,ND
7	2	05010738	BOLT .625-11 x 1.750 G8 HHCS ZC
8	12	05021017	WASHER .625 FLAT MIL-CARB SAE
9	6	05020837	NUT .625-11 GC TOPLOCK C&W
10	4	05010739	BOLT .625-11 x 2.000 G8 HHCS ZC
11	2	05010691	BOLT .500-13 x 1.500 G8 HHCS ZC
12	6	05021005	WASHER .500 FLAT MIL-CARB SAE
13	3	05020847	NUT .500-13 GC TOPLOCK C&W
14	1	05010693	BOLT .500-13 x 2.000 G8 HHCS ZC
15	6	05010768	BOLT .750-10 x 3.000 G8 HHCS ZC
16	12	05021018	WASHER .750 FLAT MIL-CARB SAE
17	6	05020849	NUT .750-10 GC TOPLOCK C&W

# Mounting Hardware Kit

## 00043524 MOUNTING HARDWARE KIT

Item	Qty	Part Number	Description
1	2	05051418	Pipe Ball End
2	1	05051395	Cardboard Box
3	8	00156141	Support, Wing, Jr.
4	1	05052746	Hook, Eye, Grab, 3/8", Forged
5	24	05010741	Bolt, 5/8-11 x 2 1/2, G8, HHCS, Zinc
6	2	05010753	Bolt, 5/8-11 x 7, G8, HHCS, Zinc
7	1	05021318	Washer, 1 1/2, Flat, Zinc
8	26	05020837	Nut, 5/8-11, Top Lock, C&W
9	1	05022007	Pin, 1/4 x 2 1/2, Cotter, Zinc
10	1	00030114	Chain, 3/8 x 16 Links
11	2	00067926	Mounting Angle, Pipe Brace
12	52	05021007	Washer, .625 Flat Mil-Carb, Zinc

## 00116347 MOUNTING BOX, DF, W/ PARAGLIDE

Item	Qty	Part Number	Description
1	1	05051395	CARDBOARD BOX
2	20	05010740	BOLT, .625-11 X 2.25, G8, HHCS, ZINC
3	28	05020837	NUT, .625-11, GC, TOP LOCK, C&W
4	1	05052746	GRAB HOOK, .375" FORGED
5	1	05021318	WASHER, 1.5, FLAT, ZINC
6	1	05022050	PIN, .250 X 2.250, COTTER
7	8	05010741	BOLT, .625-11 X 2.5, G8, HHCS, ZINC
8	2	05053142	GREASE ZERK, .125 NPT, 90 DEG
9	2	05051481	FITTING GREASE LINE, STRAIGHT
10	8	00156141	SUPPORT WING JUNIOR

**00149515 MOUNTING BOX, W/ PARAGLIDE, MM REAR MT**

Item	Qty	Part Number	Description
1	1	05051395	CARDBOARD BOX
2	20	05010740	BOLT, .625-11 X 2.25, G8, HHCS, ZINC
3	8	05010741	BOLT, .625-11 X 2.5, G8,HHCS, ZINC
4	28	05020837	NUT, .625-11, GC, TOP LOCK, C&W
5	1	05052746	GRAB HOOK, .375" FORGED
6	1	05021318	WASHER, 1.5, FLAT, ZINC
7	1	05022050	PIN, .250 X 2.250, COTTER
8	2	05053142	GREASE ZERK, .125 NPT, 90 DEG
9	2	05051481	FITTING GREASE LINE, STRAIGHT
10	4	00039713	ANGLE, MS, 4.0 X 3 X .5 X 7
11	4	05051418	PIPE BALL END
12	4	05010766	BOLT, .750-10 X 2.50, G8, HHCS, ZINC
13	4	05020849	NUT, .750-10, GC, TOP LOCK, C&W
14	8	05021018	WASHER, .750 FLAT, MIL-CARB, SAE

**00106453 MOUNTING HARDWARE KIT, DF, WING ND 204 W/ FRAME**

Item	Qty	Part Number	Description
1	1	05051395	CARDBOARD BOX
2	6	05051418	PIPE, SCHED 80, 2' BALL END
3	4	00156141	SUPPORT WING JUNIOR
4	2	01130706	SUPPORT BAR/BOLT BOX
5	4	05010755	BOLT, .625-11 X 8, G8, HHCS, ZINC
6	22	05017071	BOLT, .625-11 X 2.250, G8, J-429
7	34	05021090	NUT, .625-11, GG FLANGE
8	1	05052746	EYE GRAB HOOK
9	1	05021318	WASHER, 1.5 FLAT, ZINC
10	1	05022050	PIN, .250 X 2.5, COTTER ZINC
11	6	05017068	BOLT, .750-10 X 2.5, G8
12	6	05021089	NUT, .750-10 GG FLANGE
13	8	05017070	BOLT, .625-11 X 2.5, G8
14	2	05053142	GREASE ZERK, .125 NPT, 90 DEG
15	2	05051481	FITTING GREASE LINE, STRAIGHT

# Stop Kit, Toe

## 00055429 STOP KIT, TOE, WING POST

Item	Qty	Part Number	Description
1	1	00030183	Chain, High Test, GR43, .375, 63.0, 48 Links
2	1	05050592	Clevis, Double, .375, 5400 Cap.
3	1	00055428	Keyhole Plate, Post, Wing
4	1	05010694	Bolt, ½-13 x 2¼", G8, HHCS, Zinc
5	2	05021005	Washer, ½", Mil-Carb, Zinc
6	1	05020847	Nut, ½-13, GC, Top Lock, C&W
7	1	05050272	Cardboard Box

## 00100958 STOP KIT, TOE, POST, PARA, WING

Item	Qty.	Part Number	Description
1	1	00015932	CHAIN,HIGH TEST,.375x30.875
2	1	05050592	CLEVIS,DOUBLE,.375,5400 CAP
3	1	00055428	KEYHOLE PL,POST,WING
4	1	05010694	BOLT .500-13 x 2.25 G8 HHCS ZC
5	2	05021005	WASHER .500 FLAT MIL-CARB SAE
6	1	05020847	NUT .500-13 GC TOPLOCK C&W

# Cutting Edges

## 00049785 CUTTING EDGE KIT, 6', 5/8" X 8, TPCS

Item	Qty	Part Number	Description
1	1	05031072	Cutting Edge, 5/8" x 8 x 6', TPCS
2	8	05014551	Bolt, 5/8" -11 x 2 1/2, G8, DHCS, Plain
3	8	05021383	Washer, 5/8", Lock, Zinc
4	8	05020270	Nut, 5/8" -11, G8, Hex, Zinc

## 00049786 CUTTING EDGE KIT, 7', 5/8" X 8, TPCS

Item	Qty	Part Number	Description
1	1	05031074	Cutting Edge, 5/8" x 8 x 7', TPCS
2	9	05014551	Bolt, 5/8" -11 x 2 1/2, G8, DHCS, Plain
3	9	05021383	Washer, 5/8", Lock, Zinc
4	9	05020270	Nut, 5/8" -11, G8, Hex, Zinc

## 00049750 CUTTING EDGE KIT, 8', 5/8" X 8, TPCS

Item	Qty	Part Number	Description
1	1	05031075	Cutting Edge, 5/8" x 8 x 8', TPCS
2	10	05014551	Bolt, 5/8" -11 x 2 1/2, G8, DHCS, Plain
3	10	05021383	Washer, 5/8", Lock, Zinc
4	10	05020270	Nut, 5/8" -11, G8, Hex, Zinc

## 00049751 CUTTING EDGE KIT, 9', 5/8" X 8, TPCS

Item	Qty	Part Number	Description
1	1	05031076	Cutting Edge, 5/8" x 8 x 9', TPCS
2	11	05014551	Bolt, 5/8" -11 x 2 1/2, G8, DHCS, Plain
3	11	05021383	Washer, 5/8", Lock, Zinc
4	11	05020270	Nut, 5/8" -11, G8, Hex, Zinc



# Cutting Edges

## 00049752 CUTTING EDGE KIT, 10', 5/8 X 8, TPCS

Item	Qty	Part Number	Description
1	1	05031012	Cutting Edge, 5/8 x 8 x 12', TPCS
2	12	05014551	Bolt, 5/8 -11 x 2 1/2, G8, DHCS, Plain
3	12	05021383	Washer, 5/8, Lock, Zinc
4	12	05020270	Nut, 5/8 -11, G8, Hex, Zinc

## 00156178 CUTTING EDGE KIT, 7', 1.5 X 10, RUBBER, CE

Item	Qty	Part Number	Description
1	1	00156179	Cutting Edge, 1.5 x 10 x 7', Rubber
2	1	05031109	Cutting Edge, .5 x 6 x 7", TPCS
3	9	05014560	Bolt, .625-11 x 5, DH Plain
4	9	05021383	Washer, .625, Lock, Heavy, Zinc
5	9	05020270	Nut, .625-11, G8, Hex, Zinc

## 00061146 CUTTING EDGE KIT, 6', 3/4 X 6, CARBIDE

Item	Qty	Part Number	Description
1	2	05031082	Cutting Edge, Carbide, 3/4" x 6" x 3', TPCS
2	10	05014555	Bolt, 5/8-11 x 3 1/2, G8, DHCS, Plain
3	10	05021383	Washer, 5/8, Lock, Zinc
4	10	05020270	Nut, 5/8-11, G8, Hex, Zinc
5	2	05031008	Cutting Edge, 1/2 x 6 x 3', TPCS

## 00061147 CUTTING EDGE KIT, 7', 3/4 X 6, CARBIDE

Item	Qty	Part Number	Description
1	1	05031083	Cutting Edge, Carbide, 3/4" x 6" x 4', TPCS
2	11	05014555	Bolt, 5/8-11 x 3 1/2, G8, DHCS, Plain
3	11	05021383	Washer, 5/8, Lock, Zinc
4	11	05020270	Nut, 5/8-11, G8, Hex, Zinc
5	1	05031009	Cutting Edge, 1/2 x 6 x 4', TPCS
6	1	05031082	Cutting Edge, Carbide, 3/4" x 6" x 3', TPCS
7	1	05031008	Cutting Edge, 1/2 x 6 x 3', TPCS

**00057618 CUTTING EDGE KIT, 8', 3/4 X 6, CARBIDE**

Item	Qty	Part Number	Description
1	2	05031083	Cutting Edge, Carbide, 3/4" x 6" x 3', TPCS
2	10	05014555	Bolt, 5/8-11 x 3 1/2, G8, DHCS, Plain
3	10	05021383	Washer, 5/8, Lock, Zinc
4	10	05020270	Nut, 5/8-11, G8, Hex, Zinc
5	1	05031099	Cutting Edge, 1/2 x 6 x 8', TPCS

**00057619 CUTTING EDGE KIT, 9', 3/4 X 6, CARBIDE**

Item	Qty	Part Number	Description
1	3	05031082	Cutting Edge, Carbide, 3/4" x 6" x 3', TPCS
2	11	05014555	Bolt, 5/8-11 x 3 1/2, G8, DHCS, Plain
3	11	05021383	Washer, 5/8, Lock, Zinc
4	11	05020270	Nut, 5/8-11, G8, Hex, Zinc
5	1	05031033	Cutting Edge, 1/2 x 6 x 9', TPCS

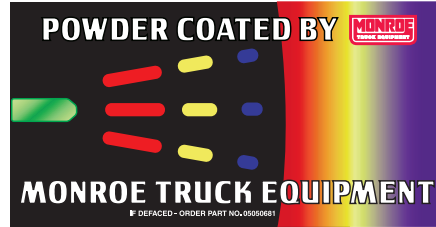
**00057620 CUTTING EDGE KIT, 10', 3/4 X 6, CARBIDE**

Item	Qty	Part Number	Description
1	1	05031083	Cutting Edge, Carbide, 3/4" x 6" x 4', TPCS
2	2	05031082	Cutting Edge, Carbide, 3/4" x 6" x 3', TPCS
3	12	05014555	Bolt, 5/8-11 x 3 1/2, G8, DHCS, Plain
4	12	05021383	Washer, 5/8, Lock, Zinc
6	12	05020270	Nut, 5/8-11, G8, Hex, Zinc
7	1	05031030	Cutting Edge, 1/2 x 6 x 10', TPCS

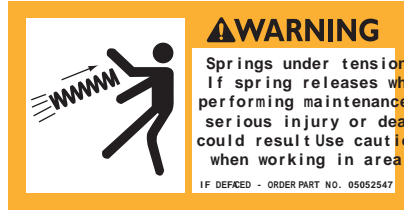
# Decal Kit



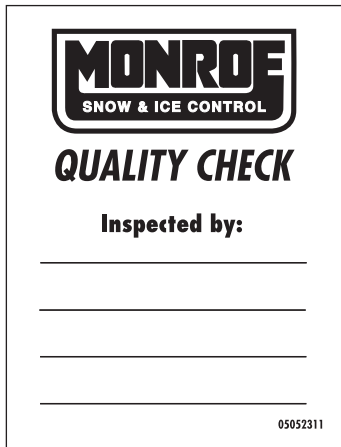
05051507



05050681



05052547



05052311



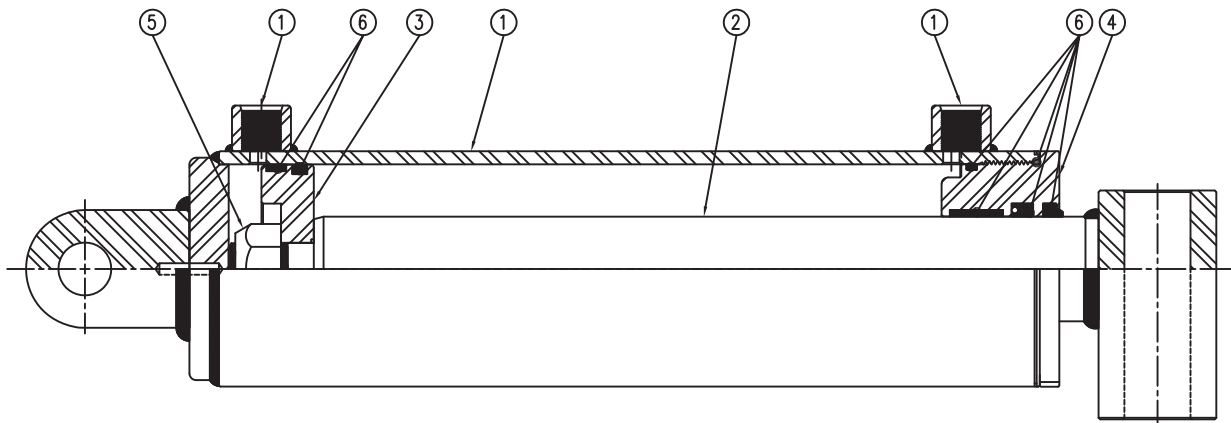
05052628

00055962 DECAL KIT, PLOW/WING			
Item	Qty	Part Number	Description
1	1	05051507	Decal, Monroe Snowplow
2	1	05050681	Decal, Bonded Powder Coat
3	1	05052311	Decal, Quality Check
4	1	05052547	Decal, Warning: Springs Under Tension
5	1	05052628	Decal, Warning: Tighten Fastener

# Cylinders

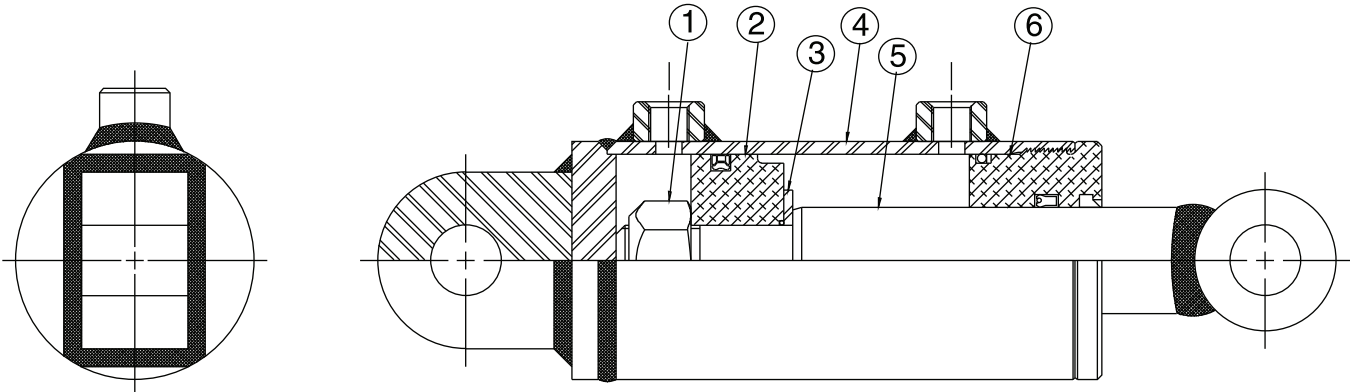
## 05002979 CYLINDER, 4 x 2 x 12 STROKE, DA

<i>DIREKT FORCE</i>	ITEM	QTY	PART #	DESCRIPTION
	1	1	---	BODY SUB-ASSEMBLY
	2	1	---	ROD ASSEMBLY
	3	1	05003349	PISTON
	4	1	05003240	GLAND
	5	1	---	HARDWARE KIT
	6	1	05003262	SEAL KIT



# Cylinders

## 05002631 CYLINDER, 3X5, DA

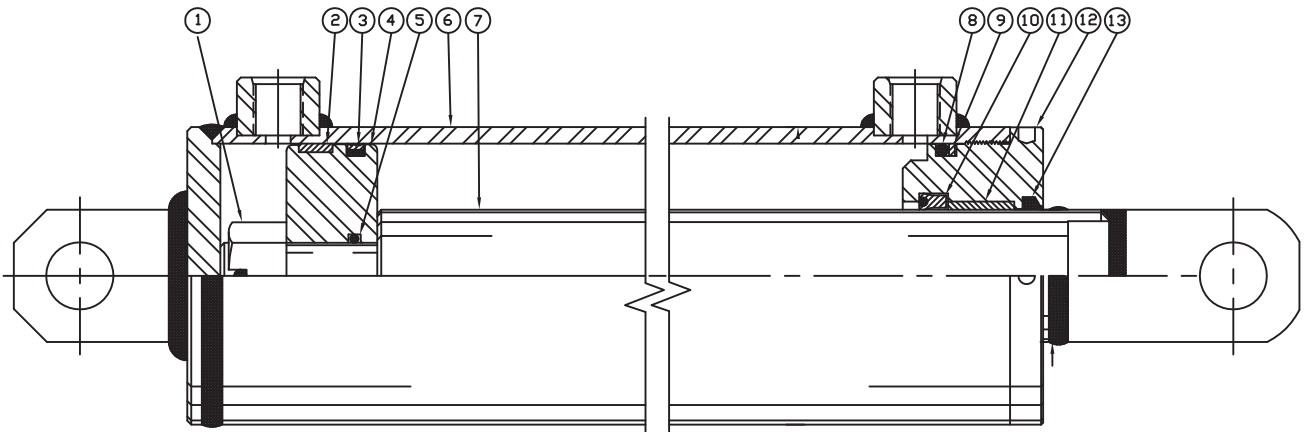


ITEM	QTY	PART NUMBER	DESCRIPTION
1	1	05001001	LOCK NUT
2	1	05002672	PISTON CAP SEAL
3	1	05002022	PISTON WASHER
4	1	05002890	CASE WELDMENT
5	1	05002891	ROD WELDMENT
6	1	05002892	HEAD THREAD
7	2	05002893	SAE PLUG
9	1	05002677	SEAL KIT

# Cylinders

## 05002952 CYLINDER, 4x10, DA, NITRIDED

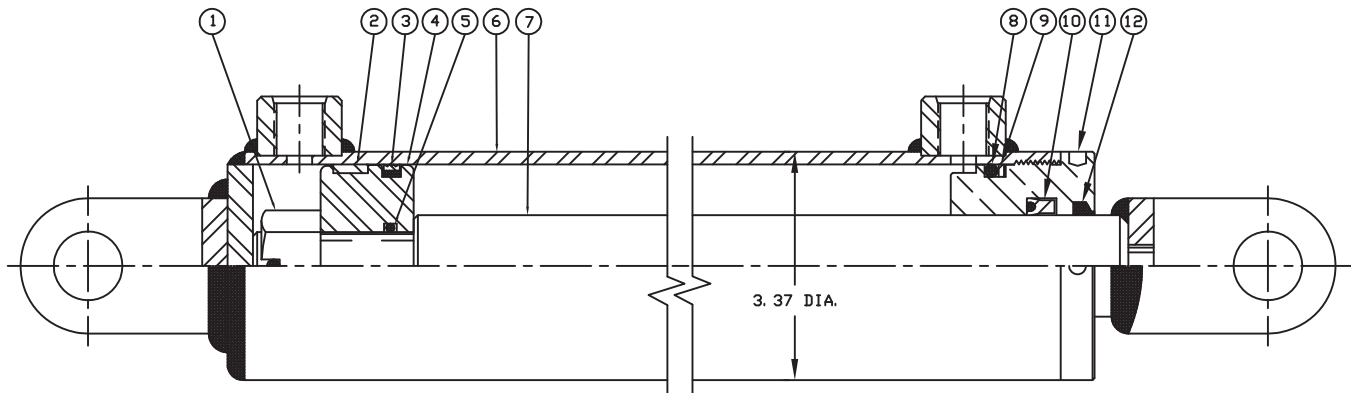
<i>BEST METAL</i>	ITEM	QTY	PART #	DESCRIPTION
	1	1	05002854	SLOTTED NUT
	2	1	05002955	WEAR RING
	3	1	05002956	PSP SEAL
	4	1	05002856	PISTON
	5	1	05002957	O-RING
	6	1	---	JACKET ASSEMBLY
	7	1	---	PISTON ROD
	8	1	05002958	O-RING
	9	1	05002959	BACKUP WASHER
	10	1	05002525	POLY PAK
	11	1	---	BRONZE LINER
	12	1	05002930	HEADSTOCK
	13	1	05002527	ROD WIPER
		1	05002855	SEAL KIT



# Cylinders

## 05002502 CYLINDER, 3X10 DA

<i>BEST METAL</i>	ITEM	QTY	PART #	DESCRIPTION
	1	1	05002854	SLOTTED NUT
	2	1	---	WEAR RING
	3	1	---	PISTON ALUM
	4	1	05002852	PISTON STEEL
	5	1	---	O-RING
	6	1	---	JACKET ASSEMBLY
	7	1	---	PISTON ROD
	8	1	---	O-RING
	9	1	---	BACKUP WASHER
	10	1	---	POLY PAK
	11	1	05002899	GLAND NUT
	12	1	---	ROD WIPER
			05003188	SEAL KIT
			05002873	GLAND NUT W/ SEAL
			05003323	PIN
				COTTER PIN



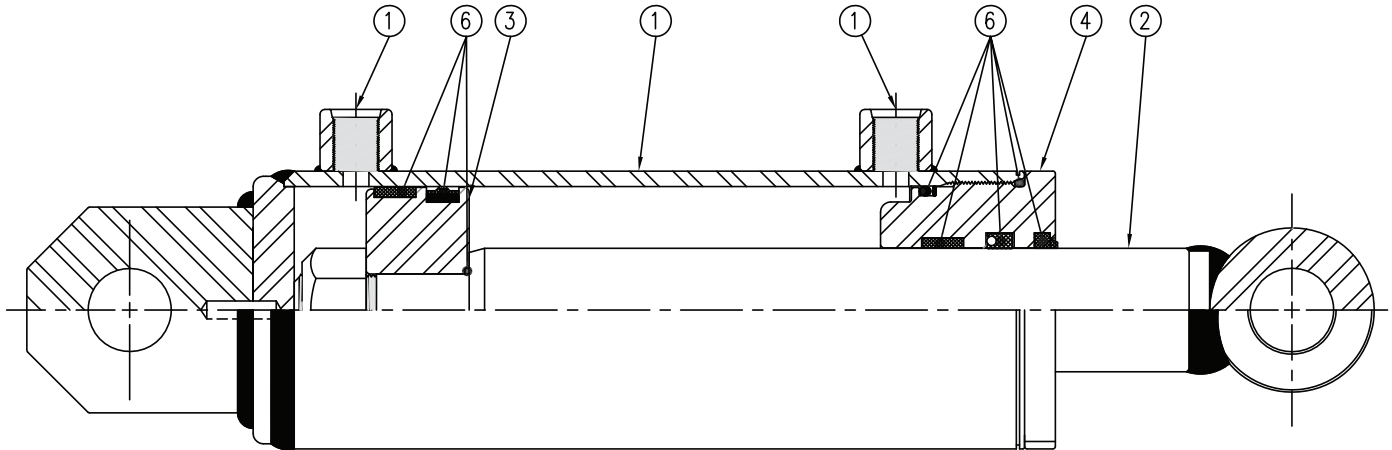
# Cylinders

## 05003214 3" x 5", DA CYLINDER

### DIREKT FORCE

VENDOR #73115  
(Stamped On Cylinder)

ITEM	QTY	MTE PN#	DESCRIPTION
1	1	05003298	BODY SUB ASSY
2	1	05003299	ROD ASSY
3	1	05003300	PISTON
4	1	05003301	GLAND
5	AR	05003302	HARDWARE KIT
6	AR	05003303	SEAL KIT

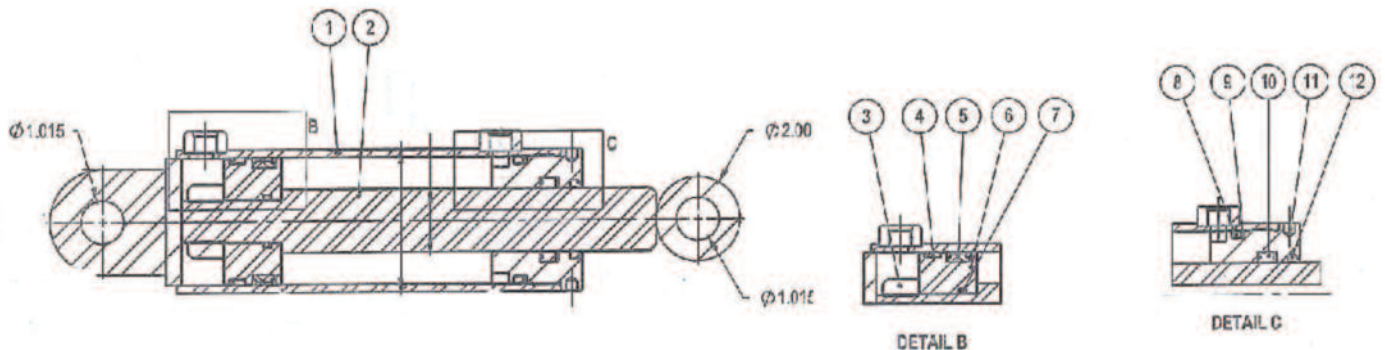


### BEST METAL

VENDOR #33285  
(Stamped On Cylinder)

ITEM	QTY	MTE PN#	DESCRIPTION
1	1	05003304	JACKET ASSEMBLY
2	1	05003305	ROD ASSEMBLY
3	1	05003306	FASTENER, CONICAL TOP LOCK
4	1		WEAR RING
5	1		DYNAMIC SEAL
6	1	05003307	PISTON, WEAR RING
7	1		STATIC SEAL, O-RING
8	1		STATIC SEAL O-RING
9	1		BACK-UP RING, 90D NITRILE
10	1		DYNAMIC SEAL, POLY PAK
11	1		GLAND NUT, INTERNAL
12	1		ROD WIPER

ITEMS #4,5,7,8,9,10,11,12 INCLUDED IN  
SEAL KIT PN# 05003308

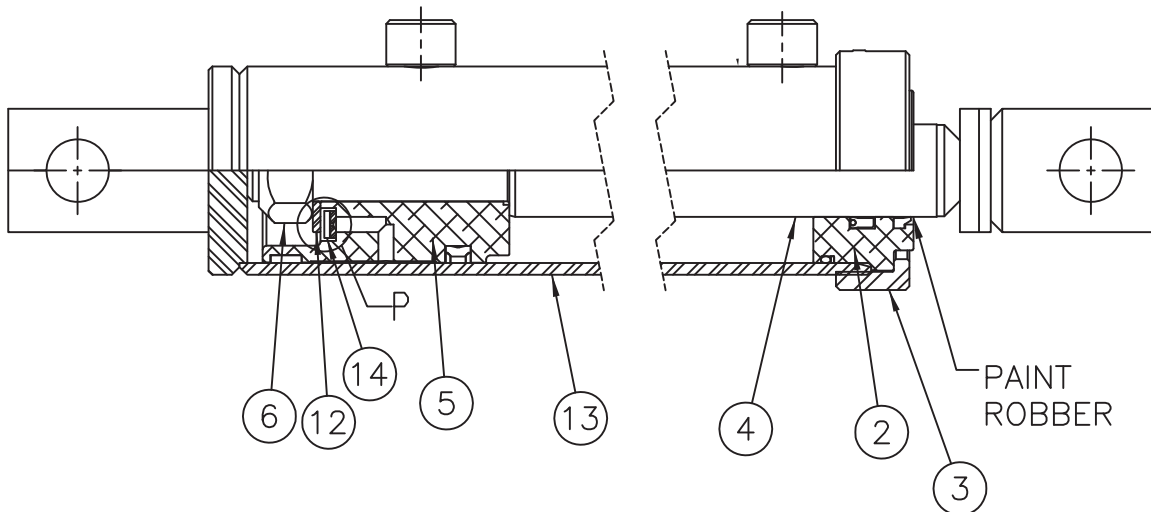




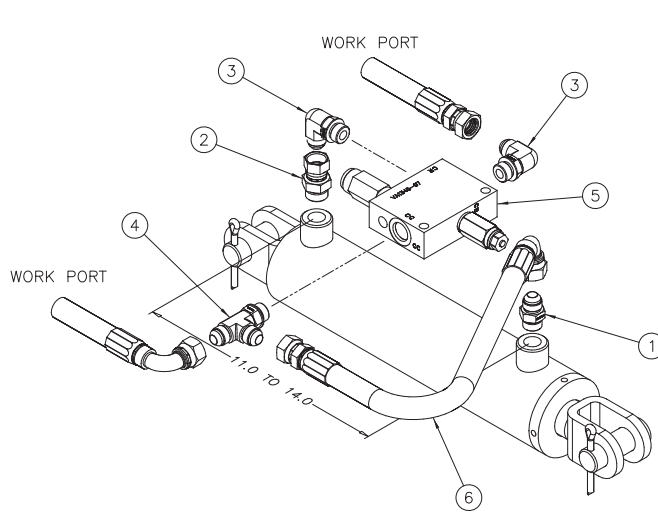
# Cylinders

## 05002897 CYLINDER, 3x10, DA DECEL

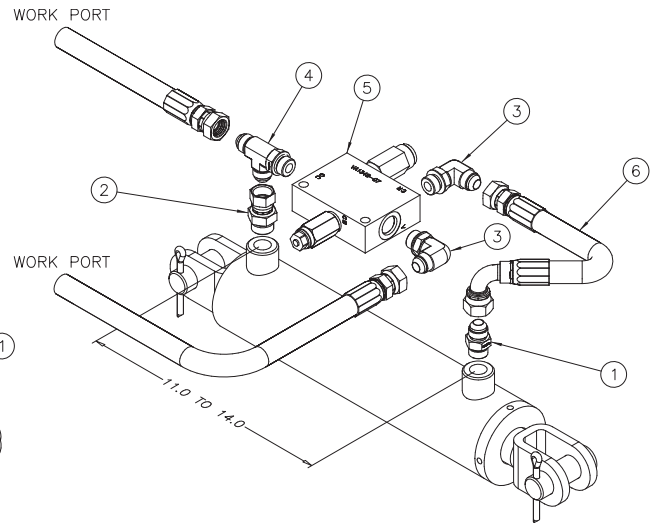
BOBALEE	ITEM	QTY	PART #	DESCRIPTION
	1	1	---	HEAD
	2	1	---	THREAD CAP
	3	1	---	SET SCREW
	4	1	05002915	ROD WELDMENT
	5	1	---	PISTON
	6	1	---	LOCK NUT
	7	2	---	CLEVIS PIN
	8	4	---	PIN CLIP
	9	2	---	#8 SAE PLUG
	10		---	WHITE PRIMER
	11		---	BLACK PRIMER
	12	1	---	PISTON WASHER
	13	1	05002917	CASE WELDMENT
	14	1	---	ORIFICE
	15	1	---	PAINT ROBBER
	16	1	05002916	SEAL KIT



## OPTIONS



- \*AS SHOWN WILL LOCK CYLINDER IN THE EXTENDED DIRECTION.
- \*CROSS OVER RELIEF SET @ 2000 PSI
- \*CYLINDER IS REFERENCE ONLY
- \*FOR ALTERNATE METHOD USED BY MTE TRUCK EQUIPMENT SEE 00156181.



- \*AS SHOWN WILL LOCK CYLINDER IN THE RETRACTED DIRECTION.
- \*CROSS OVER RELIEF SET @ 2000 PSI
- \*CYLINDER IS REFERENCE ONLY

KIT FOR USE WITH CYLINDERS	
PART NUMBER	DESCRIPTION
05002502	CYLINDER,3x10,DA,R WING HEEL
05002897	CYLINDER,3x10,DA,DECELL,R WING
05002405	CYLINDER,3x10,DA,R WING HEEL
05002952	CYLINDER,4x10,DA,R WING HEEL

### 05050770 VALVE KIT, WING CHECK, 3/4 ORB, 11"-14" BETWEEN 3/4 ORB PORTS

Item	Qty	Part Number	Description
1	1	05037343	Fitting, Striaght, 3/4-16 MJIC x 3/4-16MORB
2	1	05043058	Fitting, Straight, 3/4-16 MORB x 3/4-16FJIC
3	2	05037930	Fitting, 90°, Elbow, 3/4-16ORB x 3/4-16JIC
4	1	05037812	Fitting, Tee, 3/4-16JMJC x 3/4-16MJIC x 3/4-16ORB
5	1	05044081	Valve, Lock, 1800PSI, JD Wing
6	1	05043060	Hose Assembly, 3/8" ID, 9 3/4" OAL, 2 Wire

# Snow & Ice Control Product Warranty

---



1051 W. 7<sup>th</sup> Street Monroe, WI 53566  
800-880-0109 608-329-8105 FAX 608-328-8390  
E-mail: snowandicecontrol@monroetruck.com Website: www.monroetruck.com

## MONROE TRUCK EQUIPMENT, INC. WARRANTY & ICE CONTROL PRODUCTS

**Monroe Truck Equipment, Inc.** warrants to the original purchaser, that if any part of the product proves to be defective in workmanship or material with **1 YEAR** of the original installation, and is returned to us with 30 days of the discovered defect, we will (at our option) repair or replace the defective part. This warranty does not apply to damage resulting from misuse, neglect, accident, improper installation, normal wear items or lack of maintenance. This warranty is exclusive and supersedes all other warranties, whether expressed or implied. **Monroe Truck Equipment, Inc.** neither assumes, nor authorizes anyone to assume for it, any other obligation or liability in connection with this warranty and will not be liable for consequential damages.

All engines, pumps, motors, cylinders and valves are warranted by their manufacturer and not by **Monroe Truck Equipment, Inc.** The manufacturer's warranty will apply to these parts. Electrical and hydraulic components are not to be disassembled without the express written permission of **Monroe Truck Equipment, Inc.** Use of replacement parts other than original equipment voids this warranty.

All defective parts returned must be accompanied by the model number, serial number, date installed, date of defect, description of defect, and the name of the distributor from whom it was purchased. All warranty claims must have prior written approval from **Monroe Truck Equipment, Inc.**

**Please return the warranty registration card that accompanies this manual to confirm receipt of this parts catalog and acknowledge the information contained within. Failure to return the attached card may result in a voided warranty.**

# Uninstalled Parts & Equipment Warranty

---



## Warranty Policy Uninstalled Parts and Equipment Provided by Monroe Truck Equipment

Monroe Truck Equipment will provide the following limited warranty for a period of one year to the original purchaser of all uninstalled goods provided by Monroe Truck Equipment:

**LIMITED WARRANTY:** All goods provided by Monroe Truck Equipment (MTE) will be free from defects in material and workmanship for a period of one year from the date of purchase by the original purchaser. This limited warranty shall be the sole and exclusive remedy for any such product found to be defective. This limited warranty supercedes all previous warranties and is exclusive and in lieu of all other warranties, whether expressed or implied.

This limited warranty applies only to parts or accessories manufactured by MTE and/or provided by same. Except with respect to title, this limited warranty does not pertain to parts or accessories not manufactured and/or provided by MTE, regardless of whether such parts or accessories were selected and/or recommended by MTE. MTE will, as a service to the buyer, pass on any warranties received from the original manufacturer of MTE provided parts and/or accessories.

MTE will not under any circumstances be liable for any incidental or consequential damages whether in tort, contract, or otherwise, for any bodily injury, death, property damage, loss of use, or loss of income resulting from or in any way arising out of any goods provided by MTE, or their sale, use, or manufacture.

Any warranty claim deemed to be arising from the result of misuse, abuse, neglect, accident, improper installation, lack of maintenance, act of war (whether declared or otherwise), or act of God will be denied. Any repair or modification by the buyer or any third party, without the prior written consent of MTE, will void any possible warranty compensation. Any damage deemed to be the result of abnormal operation will not be compensated by this warranty.

Normal or special maintenance items such as fuels, fluids, tires, belts, hoses, filters, air cleaners, light bulbs, and any other items subject to normal wear and tear that are supplied in connection with goods provided by MTE are not allowed under this warranty.

All engines, pumps, cylinders, valves, and motors are warranted by their manufacturer and not by Monroe Truck Equipment. The manufacturer's warranty will apply to these parts. Electrical and hydraulic components are not to be disassembled without the express written consent of MTE. Any disassembly of MTE provided components without prior authorization will void the applicable warranty.

Monroe Truck Equipment shall be the sole and final determining authority as it applies to the administration of this warranty policy. Purchaser acknowledges receipt of Monroe Truck Equipment Warranty Policy and agrees to be bound by same.



1051 West 7<sup>th</sup> Street  
 Monroe, WI 53566  
 608-328-8127 ~ Fax: 608-328-4278

## Warranty Policy Uninstalled Parts and Equipment Provided by Monroe Truck Equipment

Monroe Truck Equipment will provide the following limited warranty of one year to the original purchaser of all uninstalled goods provided by Monroe Truck Equipment:

**LIMITED WARRANTY:** All goods provided by Monroe Truck Equipment (MTE) be free from defects in material and workmanship for a period of one year from the date of the original purchase. This limited warranty shall be the sole and exclusive remedy for any such goods defective. This limited warranty supersedes all previous warranties and is exclusive and the entire warranty, whether expressed or implied.

This limited warranty applies only to parts manufactured by MTE and/or provided by same. Except with respect to title, this limited warranty does not cover accessories not manufactured and/or provided by MTE, regardless of whether such accessories were created and/or recommended by MTE. MTE will, as a service to the buyer, pass on any warranties that are original from manufacturer of MTE provided parts and accessories.

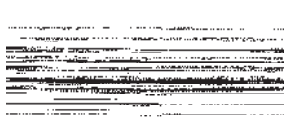
MTE will not under any circumstances be liable for any consequential damages whether in tort, contract, or otherwise, for any bodily injury, property damage, loss of use, or loss of income resulting from or in any way arising out of any goods provided by their sale, use, or manufacture.

Any warranty claim deemed to be arising from misuse, abuse of neglect, accident, improper installation, lack of maintenance, act of war (whether declared or not), or act of God will be denied. Any repair or modification by the buyer or any third party without the prior written consent of MTE will void any possible warranty compensation. Any damage deemed to be the result of abnormal operation will not be compensated under this warranty.

Normal or special maintenance items such as tires, belts, hoses, fluids, filters, light bulbs, and other items subject to normal wear and tear are not covered. MTE provided goods are not covered under this warranty.

All engines, pumps, cylinders, valves, and other mechanical and hydraulic components are not covered by the manufacturer's warranty. The manufacturer's warranty will apply to these components if they are not disassembled without the express written consent of MTE. Any disassembly of MTE provided components without prior authorization will void the applicable warranty.

Monroe Truck Equipment shall be the sole determining authority as it applies to the administration of this warranty policy. Purchaser acknowledges receipt of Monroe Truck Equipment Warranty Policy and agrees to be bound by same.



GLOBAL SOLUTIONS  
 ARMORED VEHICLES ~ SPORT TRUCK CONVERSIONS  
 MUNICIPAL SNOW & ICE CONTROL ~ FIRE APPARATUS  
 PICKUP TRUCK ACCESSORIES ~ TRUCK EQUIPMENT/MODIFICATIONS



