



Monroe Junior Wing Installed with Western Style Dump Body

PN: 00091889, 00091888

Service and Parts Manual



Monroe Snow & Ice Control

A Division of Monroe Truck Equipment

1051 W. 7th Street

Monroe, WI 53566

Phone: 608-328-8127

Fax: 608-329-8488

05052410

11192003

TABLE OF CONTENTS

| | |
|--|-------------------|
| SAFETY INSTRUCTIONS | Page 2 |
| GENERAL INFORMATION | Page 3 |
| REQUIRED TOOLS | Page 3 |
| MAINTENANCE INSTRUCTIONS | Page 4 |
| INSTALLATION INSTRUCTIONS | Page 7-10 |
| DISMOUNT PROCEDURE INSTRUCTIONS | Page 11 |
| TORQUE CHART | Page 11 |
| REPLACEMENT PARTS | Page 12-30 |
| HOW TO ORDER PARTS | Page 31 |
| RETURN POLICY | Page 31 |
| WARRANTY REGISTRATION | Page 33 |

SAFETY INSTRUCTIONS

- Read all installation, safety and maintenance instructions completely before operating this equipment.
- Keep all personnel clear of moving parts while equipment is being operated.
- Do not operate a equipment in need of maintenance! Repair immediately!
- While operating this equipment, use common sense, use caution, be alert and be safety-conscious
- **Before installation of wing or maintenance to wing or truck, be sure to apply parking brake, chock the rear wheels and remove the key from the ignition switch.**
- **Always use wing restraint chain when wing is in stored position.**

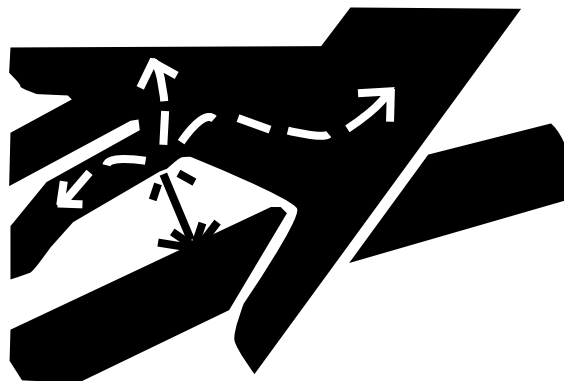
AVOID HIGH-PRESSURE FLUIDS

Escaping fluid under pressure can penetrate the skin causing serious injury.

Avoid the hazard by relieving pressure before disconnecting hydraulic or other lines. Tighten all connections before applying pressure.

Search for leaks with a piece of cardboard. Protect hands and body from high pressure fluids.

If an accident occurs, see a doctor immediately. Any fluid injected into the skin must be surgically removed within a few hours or gangrene may result.



GENERAL INFORMATION

- Location descriptions are noted in direction of travel. (i.e. front, rear, left and right.)
- Delivery of replacement parts is subject to our sales delivery terms.
- Use only **Monroe Truck Equipment** O.E.M. replacement parts. Failure to do so will void warranty.
- **Monroe Truck Equipment** reserves the right to make revisions or alterations to this parts manual.
- Replacement parts listed in this manual reflect our most common wing items. If you do not find the parts you require, please call your distributor.
- Suspension spring modification and/or airbag may be required to carry additional weight.

REQUIRED TOOLS

- ½" drive impact wrench
- ½" drive impact socket set
- Combination wrench set
- Torque wrench
- Frame drill or ½" drill
- Welder (AC Arc or Wire Feed)

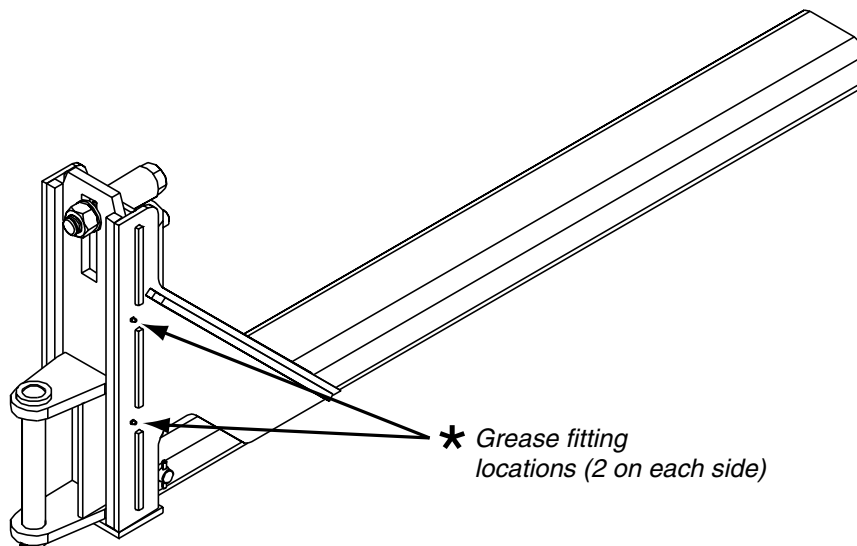
MAINTENANCE INSTRUCTIONS

In Season:

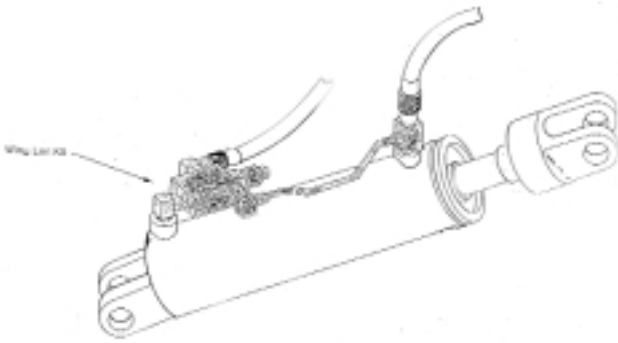
- Check for loose bolts and nuts daily, and re-torque before use. (Failure to inspect equipment on a daily basis may seriously affect safety and/or efficiency.)
- Lubricate all grease fittings (See below for locations) every ten hours of normal use and more frequently under heavy use.
- Check all hydraulic fittings for tightness on a regular basis.
- System pressure should NOT exceed 2000 PSI.
- Check cutting edge for wear. Do not let cutting edge wear closer than $\frac{1}{2}$ " to $\frac{3}{8}$ " from the bottom angle of the moldboard.
- Due to the nature of use and environment this equipment is operating in, damage and wear may occur at any time. Therefore, **Monroe Truck Equipment** recommends the end user establish and follow a daily inspection routine before using this equipment.

Off Season:

- Use care when disconnecting hydraulic lines to assure that no dirt or foreign objects enter the hydraulic system. Use caps to cover hydraulic hose fittings and insert plugs in hydraulic ports.
- Hydraulic cylinders should be fully retracted when stored during the off season to prevent damage or corrosion. The remaining exposed shaft surface should be coated with a thick grease to prevent corrosion, which must be removed before returning to regular service.
- Check mounting bolts for wear and/or damaged threads and replace before next season.
- Lubricate all pivot points and grease fittings (See below). Re-paint if necessary.

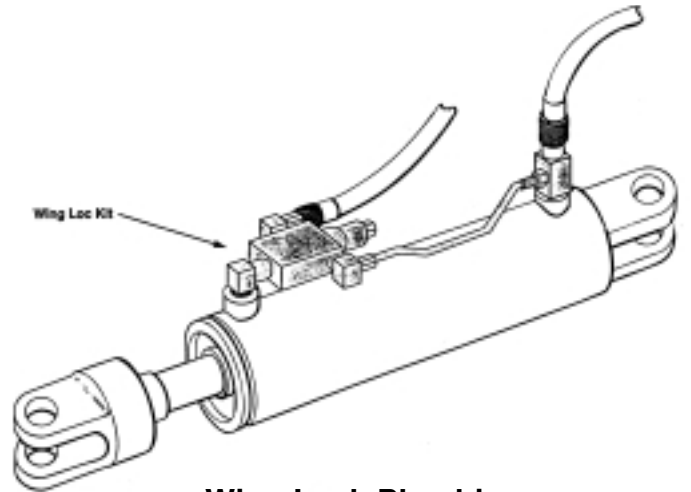


WING LOC



Wing Lock Plumbing

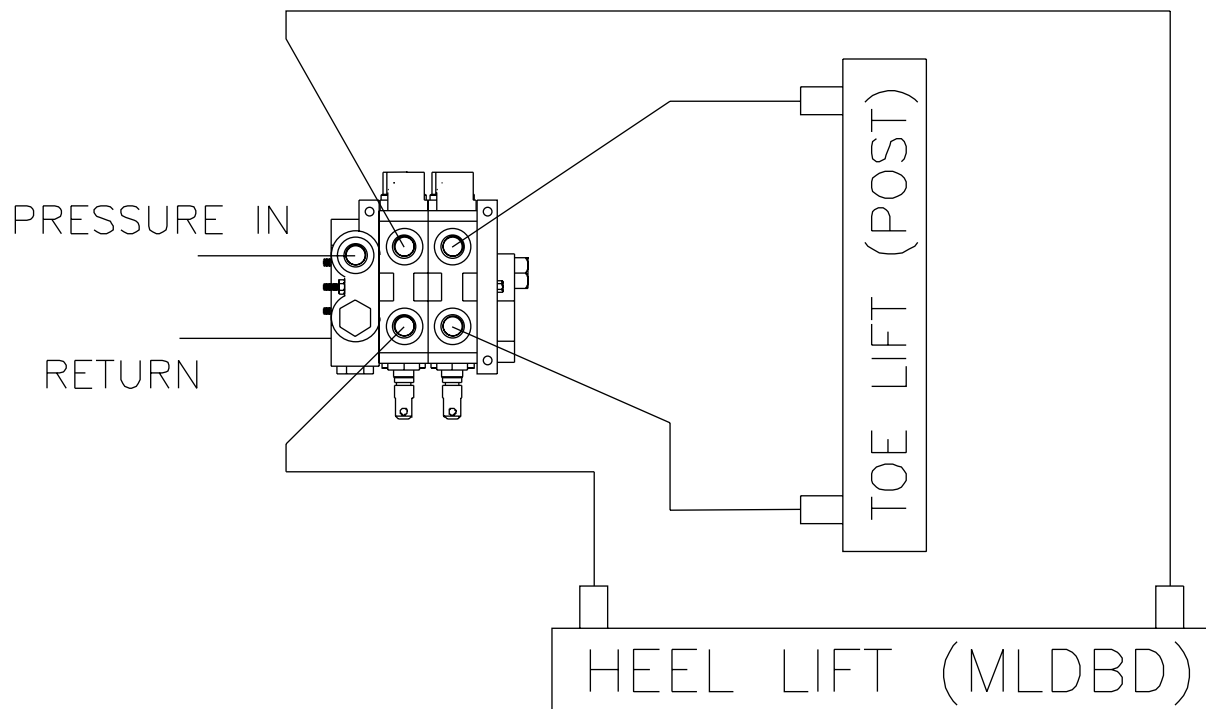
Install the lock valve at the base of the cylinder when you want the rod locked in the extended position.



Wing Lock Plumbing

Install the lock valve on the rod side of the cylinder when you want the rod locked in the collapsed position.

HYDRAULIC PLUMBING KIT



INSTALLATION INSTRUCTIONS

*These mounting instructions are intended as a guide to aid you in the installation of your **Monroe Junior Wing**. All dimensions noted in the instructions are approximate and may vary due to make and model of chassis, tire size, type of suspension, spring deflection, customer preference and interference caused by immovable objects such as a transfer case. **Monroe Truck Equipment** assumes no responsibility for improper installation unless installed at a **Monroe Truck Equipment** location. Mounting location should be discussed by the end-user and the installer prior to installation in order to achieve the best possible installation.*

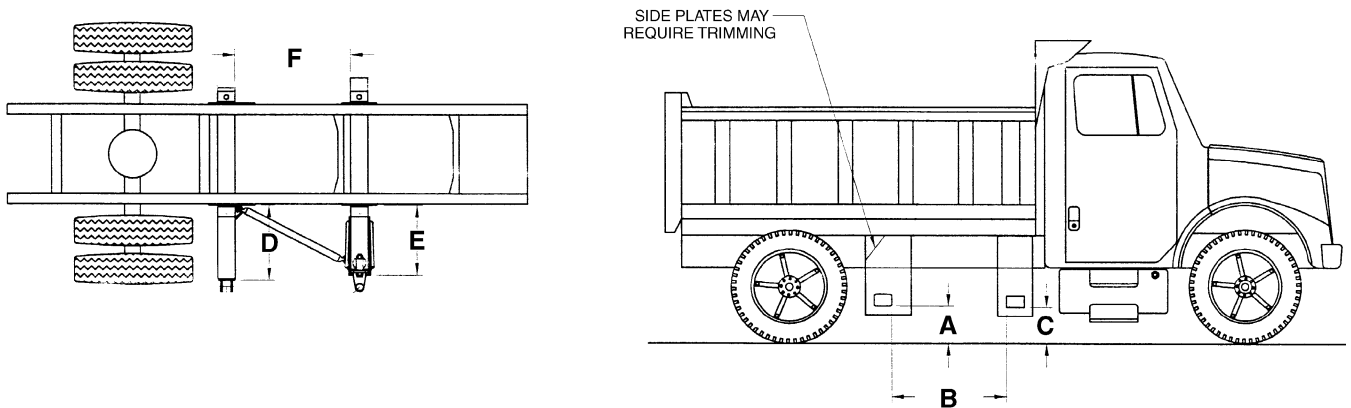
1. Trimming Side Plates to Fit

- Layout tube locations to determine how much to trim $\frac{1}{2}$ " side plates (if necessary). For 6' and 7' wings the side plates are to be fitted to achieve a dimension of at least $36\frac{1}{4}$ " (40" is ideal) between inside of tubes. 8', 9', and 10' wings need wider spacing if possible. (See Diagram Below)
 - Punch (4) holes ($\frac{1}{16}$ " diameter) in right side plates only, for angles that fasten tubes to side plate.
 - Weld $\frac{1}{2}$ " x $1\frac{1}{4}$ " reinforcement bars on all side plates. (Not Furnished) The location of the bars will depend upon the shape of the side plates.
- Note - The rear side plates must be made to a right and a left.

2. Installation of Side Plates

- It may be necessary to relocate vehicle accessories for proper wing installation.
- Mount side plates according to the diagrams below.
- A minimum dimension of *Measurement B* between inside of tubes must be held.
- Drill (4-6) $\frac{21}{32}$ " holes through side plates and frame. Fasten side plates with $\frac{5}{8}$ " bolts, washers & nuts included in the mounting hardware kit.
- Weld support angles (Not Furnished), $\frac{3}{8}$ " x 3" x 3" x 12", behind side plates where they meet the frame. See page 7.

The measurements in the charts below are approximate and are based on a truck with a body previously installed. Raise measurements A and C by approximately 1" if installing a Jr. Wing on a bare truck frame.



Junior Wing with Standard Moldboard

| | 6'/7' | 8'/9' | 10'/11' | FT |
|----------|--------------------|--------------------|--------------------|--------------------|
| A | 12" | 12" | 12" | |
| B | 40" | 50" | 55" | |
| C | 11 $\frac{1}{2}$ " | 11 $\frac{1}{2}$ " | 11 $\frac{1}{2}$ " | 11 $\frac{1}{2}$ " |
| D | 26" | 26" | 26" | |
| E | 24 $\frac{1}{4}$ " | 24 $\frac{1}{4}$ " | 24 $\frac{1}{4}$ " | |
| F | 40 $\frac{1}{8}$ " | 50 $\frac{1}{8}$ " | 55 $\frac{1}{8}$ " | |

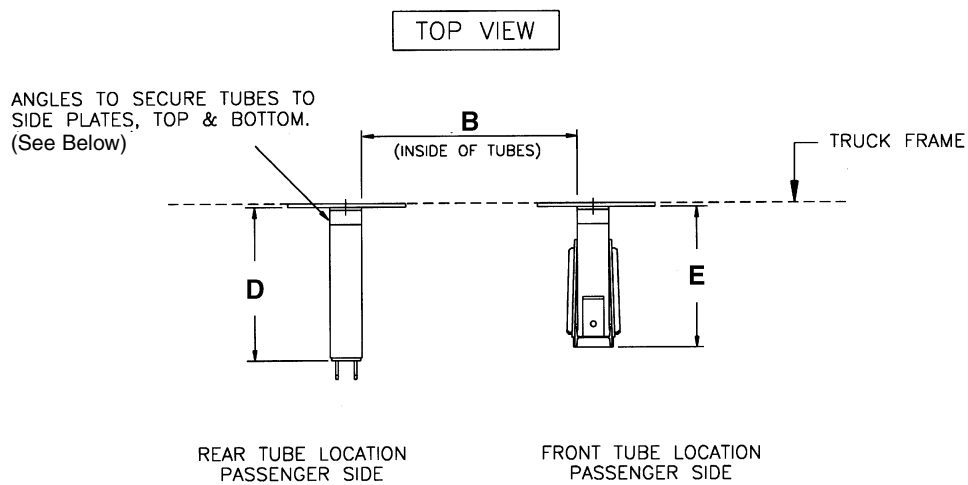
Junior Wing with Trip Edge Moldboard

| | 6'/7' | 8'/9' | 10'/11' |
|----------|--------------------|--------------------|--------------------|
| A | 14 $\frac{1}{2}$ " | 14 $\frac{1}{2}$ " | 14 $\frac{1}{2}$ " |
| B | 40" | 50" | 55" |
| C | 14" | 14" | 14" |
| D | 26" | 26" | 26" |
| E | 24 $\frac{1}{4}$ " | 24 $\frac{1}{4}$ " | 24 $\frac{1}{4}$ " |
| F | 40 $\frac{1}{8}$ " | 50 $\frac{1}{8}$ " | 55 $\frac{1}{8}$ " |

INSTALLATION INSTRUCTIONS

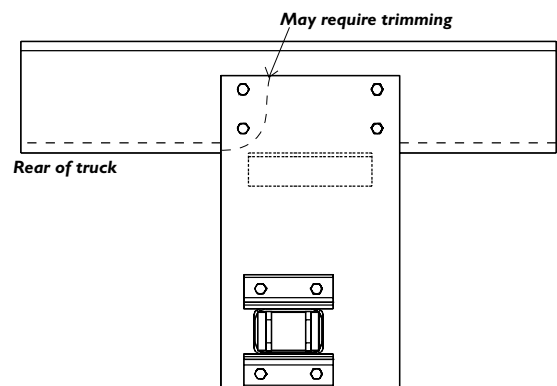
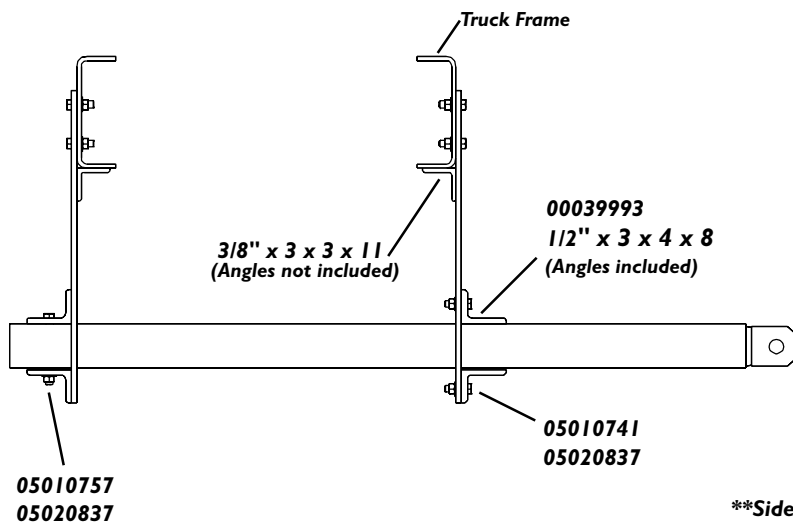
3. Installation of Front and Rear Tubes

- Slide tubes into slots of side plates.
- Locate rear tube 26" (*Measurement D*) from face of rear right side plate to outside edge of tube end plate.
- Locate front tube 24¼" (*Measurement E*) from face of front right side plate to outer edge of vertical.
- Install eight ½" x 3" x 4" x 8" angles, included, that secure tubes in place. Right side angles will be bolted to side plate with ⅝" x 2½" bolts, top lock nuts & hardened washers and welded to the top and bottom of the tube. Left side angles will be welded to side plate and bolted through the tube with ⅝" x 7" bolts, top lock nuts & hardened washers. *This allows the tubes to be removable and easily re-installed.*



VIEW FROM REAR OF TRUCK

VIEW FROM RIGHT SIDE

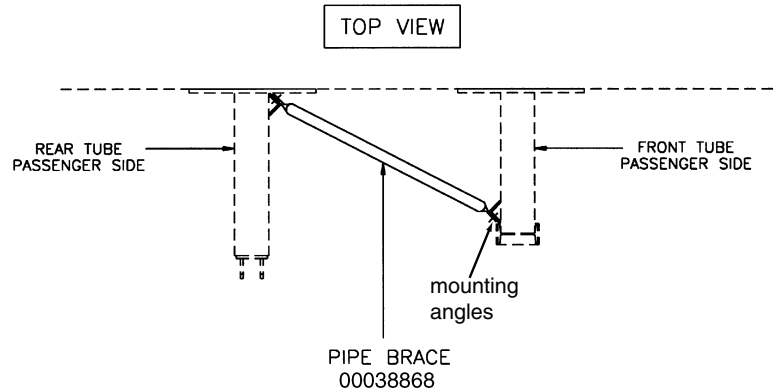


****Side plates shown without reinforcement bars welded on them.**

INSTALLATION INSTRUCTIONS

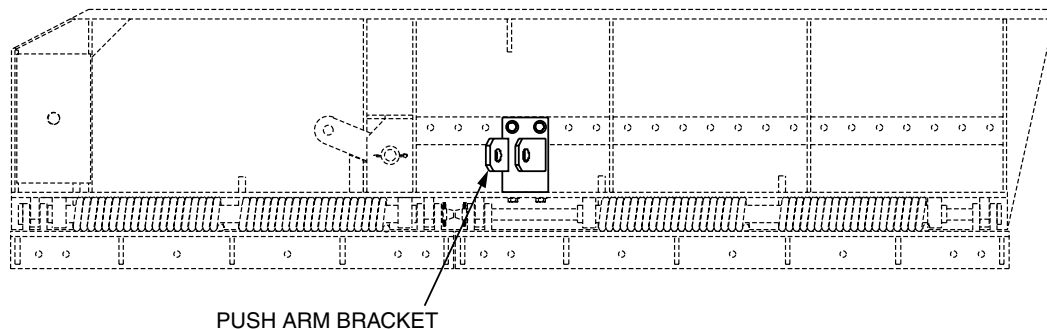
4. Pipe Brace Installation

- Weld $\frac{1}{2}$ x 3 x 4 angles with a $\frac{1}{16}$ " diameter hole, included, to inside of tubes on right side. (Located as shown).
- Attach pipe ball ends to angles with $\frac{3}{4}$ " x $2\frac{1}{2}$ " bolts, $\frac{3}{4}$ " top locks nuts & $\frac{3}{4}$ " hardened washers. Keep the pipe ball ends in as straight a line as possible. Measure from center to center of the pipe balls and cut the 2" pipe included to that length. Tack weld the pipe to the ends. Remove, weld completely then re-install. The pipe brace can be welded with standard welding wire.



5. Push Arm Installation

- Attach push arm to the rear tube and to the push arm bracket using the $1\frac{1}{4}$ " x $5\frac{1}{2}$ " pins provided with the push arm assembly. Secure with cotter pins.
6. • Attach front wing post mounting block to post with attachment pin on post slider.
• Install moldboard assembly onto front wing post mounting block using $1\frac{1}{2}$ " X $6\frac{1}{2}$ " bolt supplied. Secure with a $1\frac{1}{2}$ " washer, castle nut and $\frac{1}{4}$ " x $2\frac{1}{2}$ " cotter pin.
7. • Bolt the push arm bracket onto the moldboard and try to obtain a 90° angle between the push arm and the wing moldboard.



INSTALLATION INSTRUCTIONS

8. Install heel lift cylinder from front post mounting block to cylinder link in center of moldboard using pins provided.
9. **Final Installation**
 - Plumb the cylinders and check for leaks with a piece of cardboard.
 - Install manifold with quick connect couplers (Not included) for wing heel hoses so blade can be removed quickly. See Fig. 1
 - Operate wing and build wing stop block on rear tube so wing will not hit body in up position. Build the block out of at least ½" material (Not included). See Fig. 2
 - Install safety chain around push arm. Weld one end of the chain to the stop block and wrap it around the push arm to place the chain hook. Weld the hook to the stop block. See Fig. 2 for reference.



Fig. 1






Fig. 2 Suggests how a stop block, not included, and safety chain can be installed.

Fig. 2

DISMOUNT PROCEDURE FOR JR. WING

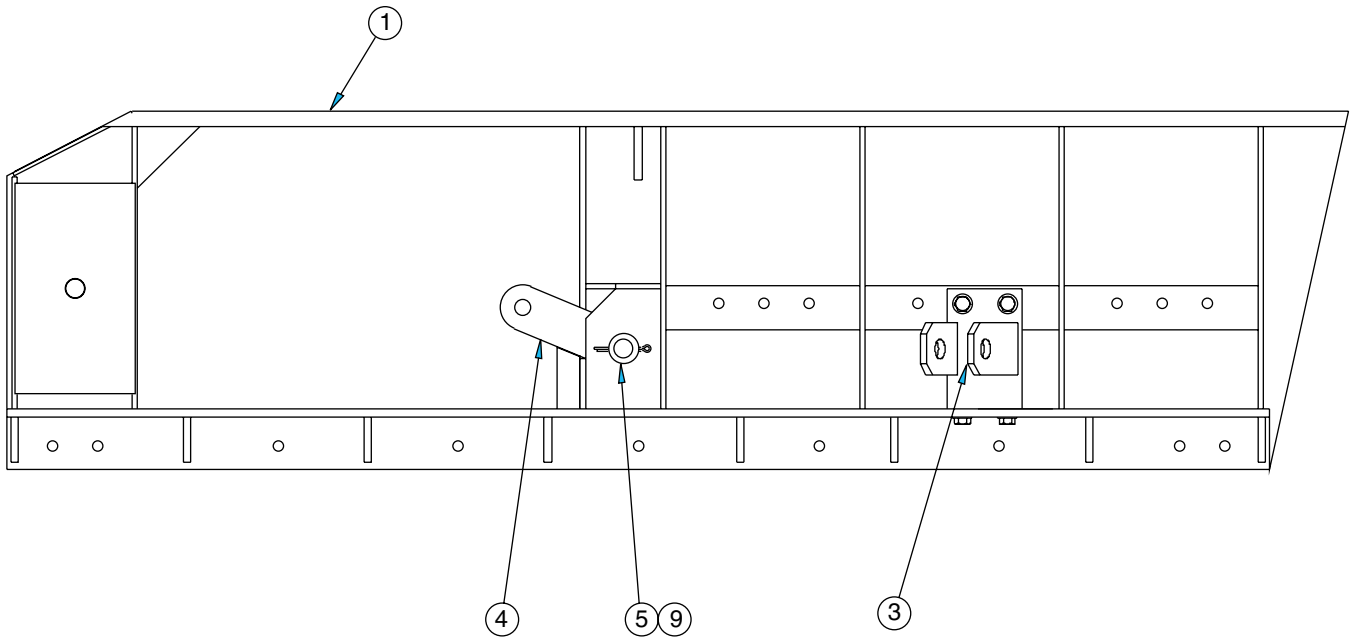
1. Lower the moldboard to the ground and disconnect the hydraulic hoses at the quick connect fittings.
2. Disconnect the lift cylinder from the mounting block. See maintenance instructions for off-season care of cylinder.
3. Remove push arm assembly from rear cross tube and moldboard. Return pins to push arm assembly.
4. Disconnect moldboard from mounting block and return nut and washer to mounting block.
5. Remove cross tube retaining bolts and cross tubes. Save bolts removed or replace before next season if needed.
6. Lubricating pivot points and repainting components will prolong life of wing kit.
7. Check condition of hydraulic hoses before returning to use.

TORQUE CHART

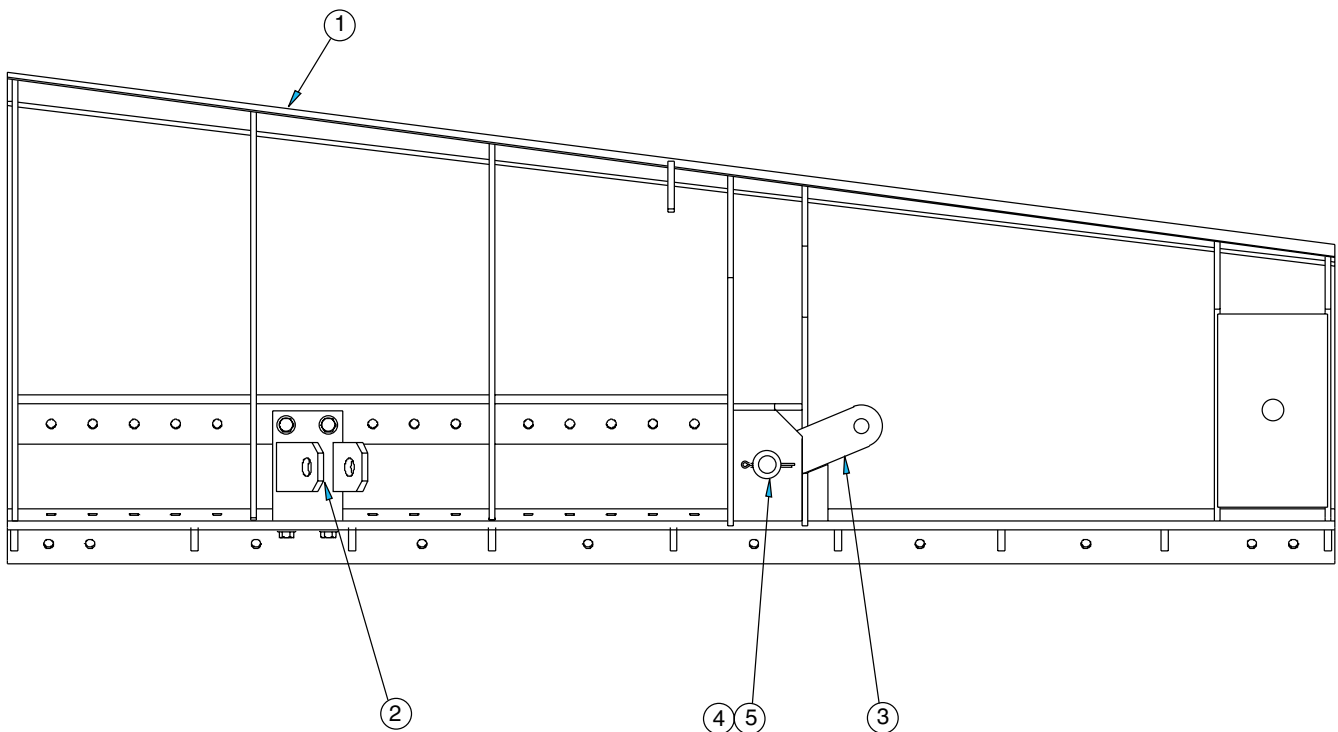
| SIZE |  GRADE 2 |  GRADE 5 |  GRADE 8 |
|---------|--|--|--|
| 1/4-20 | 50 IN-LBS | 75 IN-LBS | 9 FT-LBS |
| 3/8-16 | 15 FT-LBS | 23 FT-LBS | 35 FT-LBS |
| 1/2-13 | 35 FT-LBS | 55 FT-LBS | 80 FT-LBS |
| 5/8-11 | 75 FT-LBS | 110 FT-LBS | 170 FT-LBS |
| 3/4-10 | 130 FT-LBS | 200 FT-LBS | 280 FT-LBS |
| 1-8 | 190 FT-LBS | 480 FT-LBS | 680 FT-LBS |
| 1 1/4-7 | 380 FT-LBS | 840 FT-LBS | 1360 FT-LBS |

JUNIOR WING MOLDBOARD ASSEMBLY

8' Assembly Shown



JUNIOR WING TAPERED MOLDBOARD ASSEMBLY



JUNIOR WING MOLDBOARD ASSEMBLY PARTS LIST

| ITEM | QTY | PART # | DESCRIPTION |
|------|-----|----------|--|
| 1 | 1 | 00027185 | Moldboard Weldment, 6' |
| | 1 | 00027186 | Moldboard Weldment, 7' |
| | 1 | 00063036 | Moldboard Weldment, 8' |
| | 1 | 00027198 | Moldboard Weldment, 9' |
| | 1 | 00027199 | Moldboard Weldment, 10' |
| | 1 | 00045379 | Moldboard Weldment, 6', LH |
| | 1 | 00050108 | Moldboard Weldment, 7', LH |
| | 1 | 00050109 | Moldboard Weldment, 8', LH |
| | 1 | 00050110 | Moldboard Weldment, 9', LH |
| | 1 | 00050111 | Moldboard Weldment, 10', LH |
| | 2 | 1 | 05031072 |
| 1 | | 05031074 | Cutting Edge, $\frac{5}{8}$ " x 8" x 7' |
| 1 | | 05031075 | Cutting Edge, $\frac{5}{8}$ " x 8" x 8' |
| 1 | | 05031076 | Cutting Edge, $\frac{5}{8}$ " x 8" x 9' |
| 1 | | 05031012 | Cutting Edge, $\frac{5}{8}$ " x 8" x 10' |
| 3 | 1 | 00063052 | Bracket, Push Arm Attachment |
| | 1 | 00045313 | Bracket, Push Arm Attachment, LH |
| 4 | 1 | 00000183 | Link, Cylinder |
| 5 | 1 | 00063059 | Pin Weldment |
| 6 | 8 | 05014551 | Bolt, $\frac{5}{8}$ -11 x 2 $\frac{1}{2}$ ", GR8, Dome Head, Plain, 6' Wing |
| | 9 | 05014551 | Bolt, $\frac{5}{8}$ -11 x 2 $\frac{1}{2}$ ", GR8, Dome Head, Plain, 7' Wing |
| | 10 | 05014551 | Bolt, $\frac{5}{8}$ -11 x 2 $\frac{1}{2}$ ", GR8, Dome Head, Plain, 8' Wing |
| | 11 | 05014551 | Bolt, $\frac{5}{8}$ -11 x 2 $\frac{1}{2}$ ", GR8, Dome Head, Plain, 9' Wing |
| | 12 | 05014551 | Bolt, $\frac{5}{8}$ -11 x 2 $\frac{1}{2}$ ", GR8, Dome Head, Plain, 10' Wing |
| 7 | 8 | 05021383 | Washer, $\frac{5}{8}$ ", Lock, Zinc, 6' Wing |
| | 9 | 05021383 | Washer, $\frac{5}{8}$ ", Lock, Zinc, 7' Wing |
| | 10 | 05021383 | Washer, $\frac{5}{8}$ ", Lock, Zinc, 8' Wing |
| | 11 | 05021383 | Washer, $\frac{5}{8}$ ", Lock, Zinc, 9' Wing |
| | 12 | 05021383 | Washer, $\frac{5}{8}$ ", Lock, Zinc, 10' Wing |
| 8 | 8 | 05020270 | Nut, $\frac{5}{8}$ -11, GR8, Hex, Zinc, 6' Wing |
| | 9 | 05020270 | Nut, $\frac{5}{8}$ -11, GR8, Hex, Zinc, 7' Wing |
| | 10 | 05020270 | Nut, $\frac{5}{8}$ -11, GR8, Hex, Zinc, 8' Wing |
| | 11 | 05020270 | Nut, $\frac{5}{8}$ -11, GR8, Hex, Zinc, 9' Wing |
| | 12 | 05020270 | Nut, $\frac{5}{8}$ -11, GR8, Hex, Zinc, 10' Wing |
| 9 | 1 | 05022005 | Pin, $\frac{1}{4}$ " x 3", Cotter |
| 10 | 1 | 05002502 | Cylinder, 3 x 10, DA (See page 30 for parts breakdown) (Not Shown) |
| 11 | 1 | 01130620 | 1 $\frac{1}{2}$ x 6 $\frac{1}{2}$ Mounting Bolt/Castle Nut |

JUNIOR WING TAPERED MOLDBOARD ASSEMBLY PARTS LIST

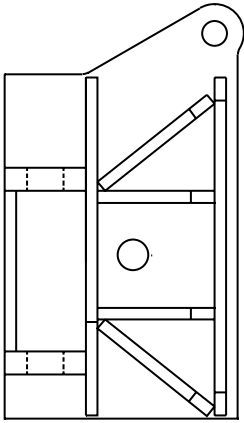
| ITEM | QTY | PART # | DESCRIPTION |
|------|-----|----------|--|
| 1 | 1 | 00070790 | Moldboard Weldment, Wing, 8JRWMB-L, 316, TRP, $\frac{3}{4}$ BA |
| 2 | 1 | 00082727 | Bracket, Pusharm, LH |
| 3 | 1 | 00000183 | Cylinder Link |
| 4 | 1 | 00063059 | Pin Assembly |
| 5 | 1 | 05022005 | Pin, $\frac{1}{4}$ x 3, Cotter, ZC |
| 6 | 1 | 05016987 | Bolt, 1 $\frac{1}{2}$ -6 x 7 $\frac{1}{2}$, G8, ZC |
| 7 | 1 | 05031075 | Cutting Edge, $\frac{5}{8}$ " x 8" x 8' |
| 8 | 1 | 05002717 | Cylinder, 4 x 10, DA (See page 29) (Not Shown) |

17367

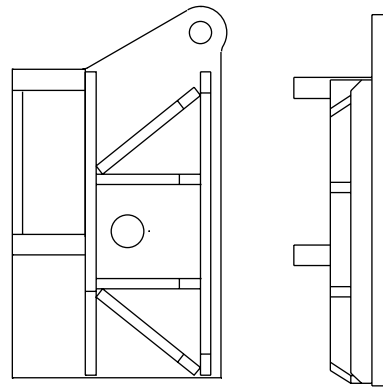
MOUNTING BLOCK WELDMENT

Qty. 1 00031766, RH
Qty. 1 00012506, LH
Mounting Block Weldment
Trip Edge Moldboard

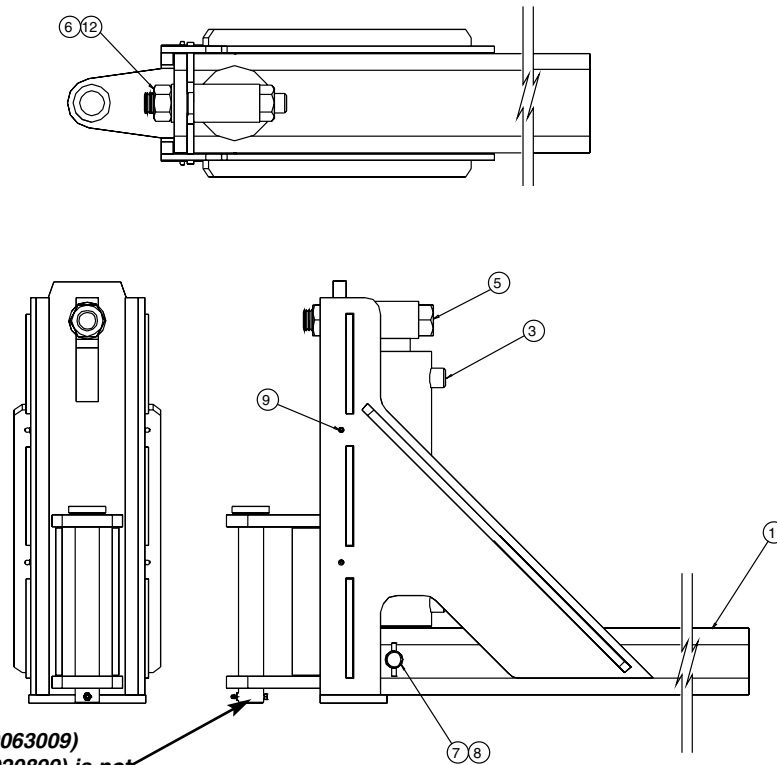
Qty. 1 00063054, RH
Qty. 1 00057606, LH
Mounting Block Weldment
Standard Moldboard



RH Shown
LH Opposite



00063000 JUNIOR WING POST ASSEMBLY



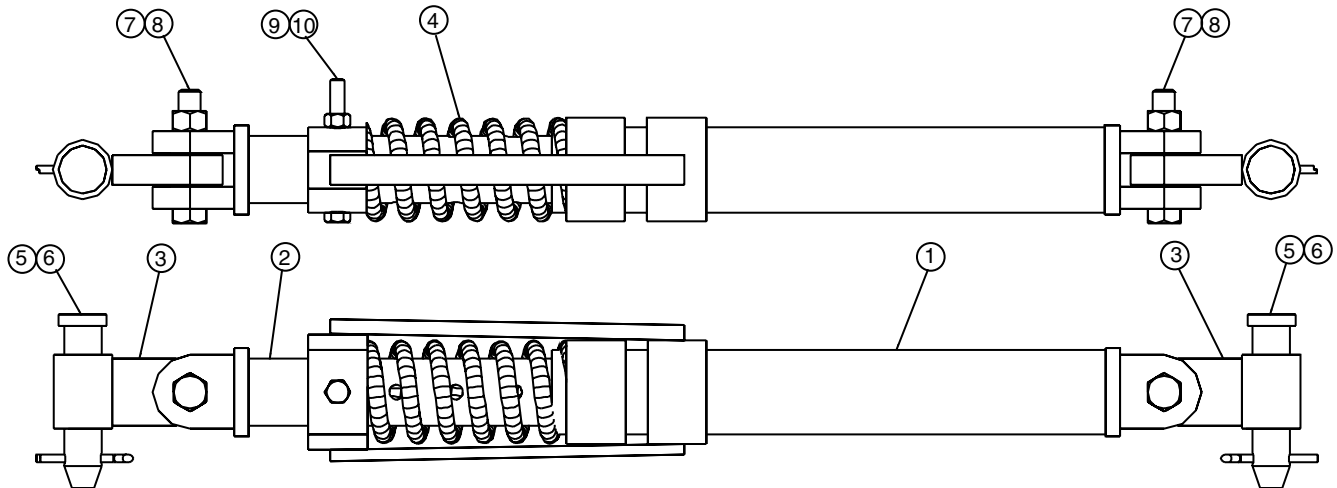
*Note: This Pin Weldment (00063009)
Bolt (05010597) and Nut (05020899) is not
included in this assembly.*

JUNIOR WING POST ASSEMBLY PARTS LIST

| ITEM | QTY | PART # | DESCRIPTION |
|------|-----|----------|---|
| 1 | 1 | 00063001 | Wing Post Weldment |
| 2 | 1 | 00063006 | Slide Weldment |
| 3 | 1 | 05002501 | Cylinder, 4 x 12, DA (See page 28 for parts breakdown) |
| 4 | 1 | 00063009 | Pin Weldment |
| 5 | 1 | 05010858 | Bolt, 1¼-7 x 7, GR8, HHCS, Zinc |
| 6 | 1 | 05020835 | Nut, 1¼-7, GRC, Top Lock, Cad & Wax |
| 7 | 1 | 00027135 | Pin, 1" x 7", Attachment |
| 8 | 2 | 05022026 | Pin, ¼" x 2", Roll, Zinc |
| 9 | 4 | 05050288 | Grease Zerk, ¼" - 28, Straight, Threaded |
| 10 | 1 | 05010597 | Bolt, ¼-20 x 2", GR8, HHCS Zinc |
| 11 | 1 | 05020899 | Nut, ¼-20, Top Lock, C&W |
| 12 | 1 | 05021316 | Washer, 1¼, Flat, Zinc |

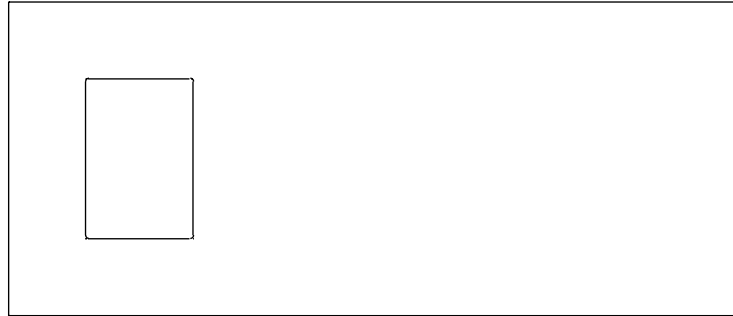
STANDARD ITEMS INCLUDED IN THIS ASSEMBLY ARE NOTE IN BOLD TYPE

00063013 JUNIOR WING PUSH ARM ASSEMBLY



| ITEM | QTY | PART # | DESCRIPTION |
|------|-----|----------|------------------------------------|
| 1 | 1 | 00028822 | Push Arm Weldment |
| 2 | 1 | 00063018 | Rod Weldment, Inner |
| 3 | 2 | 01130925 | Swivel Connector Weldment |
| 4 | 1 | 05035040 | Spring, Compression |
| 5 | 2 | 05022089 | Pin, 1¼" x 5½", Flat Head |
| 6 | 2 | 05022007 | Pin, ¼" x 2½", Cotter |
| 7 | 2 | 05010772 | Bolt, ¾"-10 x 4", GR8, HHCS, Zinc |
| 8 | 2 | 05020849 | Nut, ¾"-10, Top Lock, C&W |
| 9 | 1 | 05010699 | Bolt, ½"-13 x 3½", GR8, HHCS, Zinc |
| 10 | 1 | 05020847 | Nut, ½"-13, Top Lock, C&W |

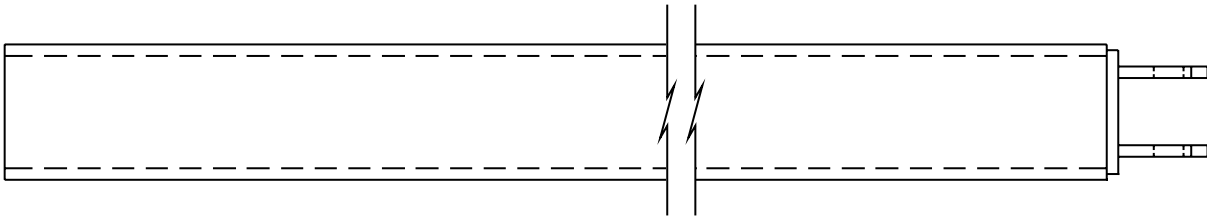
**(2 REQUIRED) 00000193
JUNIOR WING FRONT SIDE PLATE, 12 x 28**



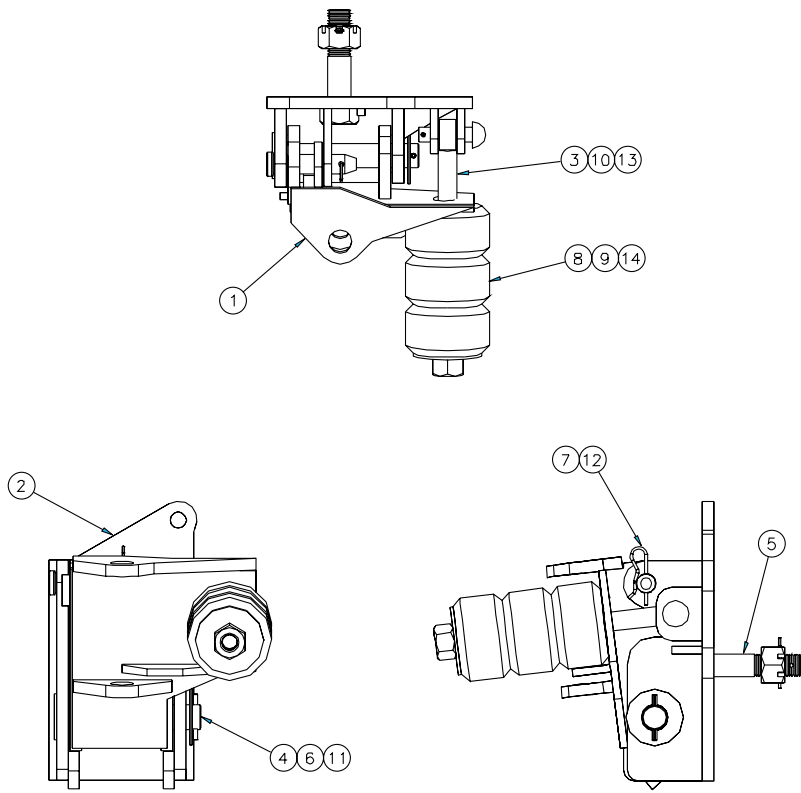
**(2 REQUIRED) 00063035
JUNIOR WING REAR SIDE PLATE, 16 X 28**



00063034
JUNIOR WING REAR CROSS TUBE, 70½" LONG



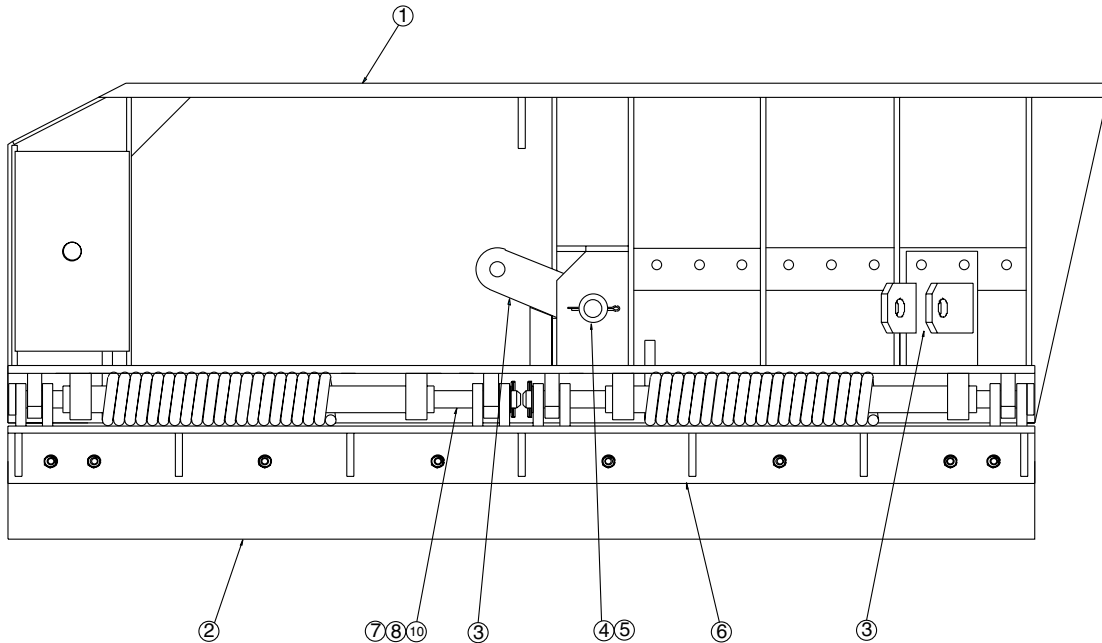
00039701 MOUNTING BLOCK ASSEMBLY, RH
00046305 MOUNTING BLOCK ASSEMBLY, LH



| ITEM | QTY | PART # | DESCRIPTION |
|------|-----|----------|---|
| 1 | 1 | 00038895 | Post Portion Weldment, RH |
| | 1 | 00046306 | Post Portion Weldment, LH |
| 2 | 1 | 00038891 | Plow Portion Weldment, RH |
| | 1 | 00046307 | Plow Portion Weldment, LH |
| 3 | 1 | 00038898 | Shock Rod Weldment |
| 4 | 1 | 01130685 | Pivot Pin |
| 5 | 1 | 05016987 | Mounting Bolt/Nut, Junior Tapered |
| 6 | 1 | 05022044 | Pin, $\frac{5}{16}$ x 3, Roll, Zinc |
| 7 | 1 | 05022002 | Pin, No. 8, Hair, Zinc |
| 8 | 1 | 05035068 | Spring, Rubber, Type 760/75 |
| 9 | 1 | 05020835 | Nut, $1\frac{1}{4}$ - 7 UNC, GC, Toplock, C&W |
| 10 | 1 | 05022000 | Pin, Button Head, 1 DIA x $3\frac{1}{2}$ |
| 11 | 1 | 05021318 | Washer, $1\frac{1}{2}$, Flat, Zinc |
| 12 | 1 | 05022089 | Pin, Flat Head |
| 13 | 1 | 05022019 | Pin, $\frac{3}{16}$ x 2, Cotter, Zinc |
| 14 | 1 | 00039714 | Washer |

OPTIONAL 6' TRIP EDGE JUNIOR WING MOLDBOARD ASSEMBLY

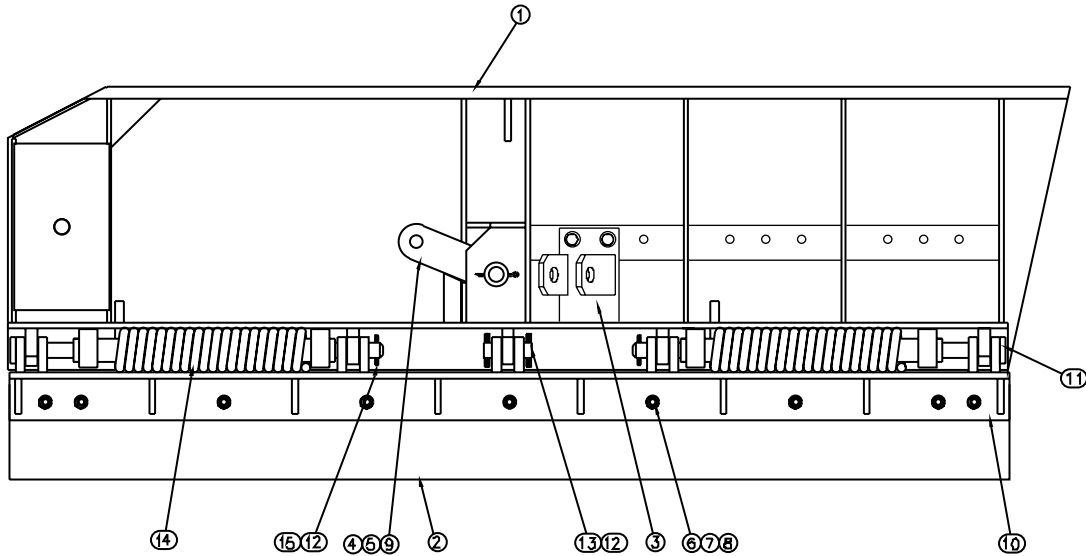
**Right Shown/Left Opposite*



| ITEM | QTY | PART # | DESCRIPTION |
|------|-----|----------|--|
| 1 | 1 | 00038826 | Wing Weldment, 6', Trip Edge |
| | 1 | 00050120 | Wing Weldment, 6', Trip Edge, LH |
| 2 | 1 | 05031072 | Cutting Edge, $\frac{5}{8}$ " x 8" x 6' |
| 3 | 1 | 00082726 | Bracket, Push Arm Attachment (See page 27) |
| | 1 | 00082727 | Bracket, Push Arm Attachment, LH (See page 27) |
| 4 | 1 | 00000183 | Link, Cylinder |
| 5 | 1 | 00063059 | Pin Weldment |
| 6 | 8 | 05014551 | Bolt, $\frac{5}{8}$ -11 x 2 $\frac{1}{2}$ ", GR8, Dome Head, Plain |
| 7 | 8 | 05021383 | Washer, $\frac{5}{8}$ ", Lock, Zinc |
| 8 | 8 | 05020270 | Nut, $\frac{5}{8}$ -11, GR8, Hex, Zinc |
| 9 | 1 | 05022005 | Pin, $\frac{1}{4}$ " x 3", Cotter |
| 10 | 1 | 00038832 | Trip Section Weldment, 6' |
| 11 | 2 | 00038833 | Pivot Rod Weldment |
| 12 | 2 | 05022039 | Pin, $\frac{5}{16}$ " x 2", Roll, Zinc |
| 13 | 2 | 05035036 | Spring, Torsion, 3 $\frac{5}{8}$ " x 16" |
| 14 | 2 | 05021191 | Bushing, 1 $\frac{7}{8}$ " x 1 $\frac{1}{4}$ ", Zinc |
| 15 | 1 | 01130620 | 1 $\frac{1}{2}$ x 6 $\frac{1}{2}$ Mounting Bolt/Castle Nut (Not Shown) |

OPTIONAL 7' TRIP EDGE JUNIOR WING MOLDBOARD ASSEMBLY

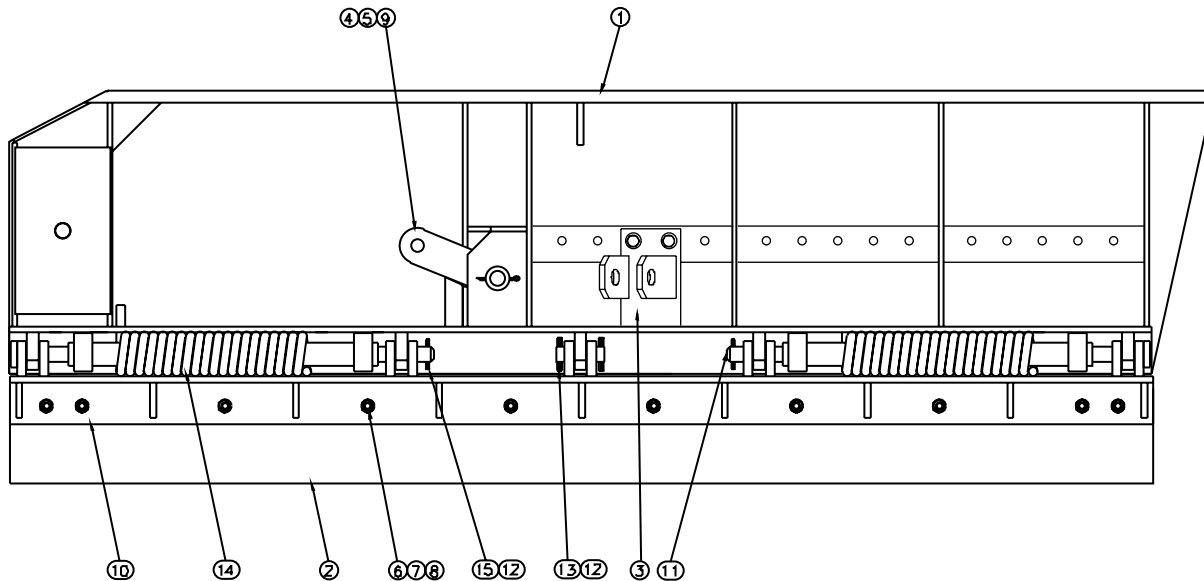
**Right Shown/Left Opposite*



| ITEM | QTY | PART # | DESCRIPTION |
|------|-----|----------|---|
| 1 | 1 | 00033116 | Wing Weldment, 7', Trip Edge |
| | 1 | 00043599 | Wing Weldment, 7', Trip Edge, LH |
| 2 | 1 | 05031074 | Cutting Edge, 5/8" x 8" x 7' |
| 3 | 1 | 00082726 | Bracket, Push Arm Attachment <i>(See page 27)</i> |
| | 1 | 00082727 | Bracket, Push Arm Attachment, LH <i>(See page 27)</i> |
| 4 | 1 | 00000183 | Link, Cylinder |
| 5 | 1 | 00063059 | Pin Weldment |
| 6 | 9 | 05014551 | Bolt, 5/8"-11 x 2 1/2", GR8, Dome Head, Plain |
| 7 | 9 | 05021383 | Washer, 5/8", Lock, Zinc |
| 8 | 9 | 05020270 | Nut, 5/8"-11, GR8, Hex, Zinc |
| 9 | 1 | 05022005 | Pin, 1/4" x 3", Cotter |
| 10 | 1 | 00038836 | Trip Section Weldment, 7' |
| 11 | 2 | 00038838 | Pivot Rod Weldment |
| 12 | 4 | 05022039 | Pin, 5/16" x 2", Roll, Zinc |
| 13 | 1 | 00033117 | Pin, 1 1/4" x 4" |
| 14 | 2 | 05035036 | Spring, Torsion, 3 3/8" x 16" |
| 15 | 4 | 05021191 | Bushing, 1 1/8" x 1 1/4", Zinc |
| 16 | 1 | 01130620 | 1 1/2 x 6 1/2 Mounting Bolt/Castle Nut (Not Shown) |

OPTIONAL 8' TRIP EDGE JUNIOR WING MOLDBOARD ASSEMBLY

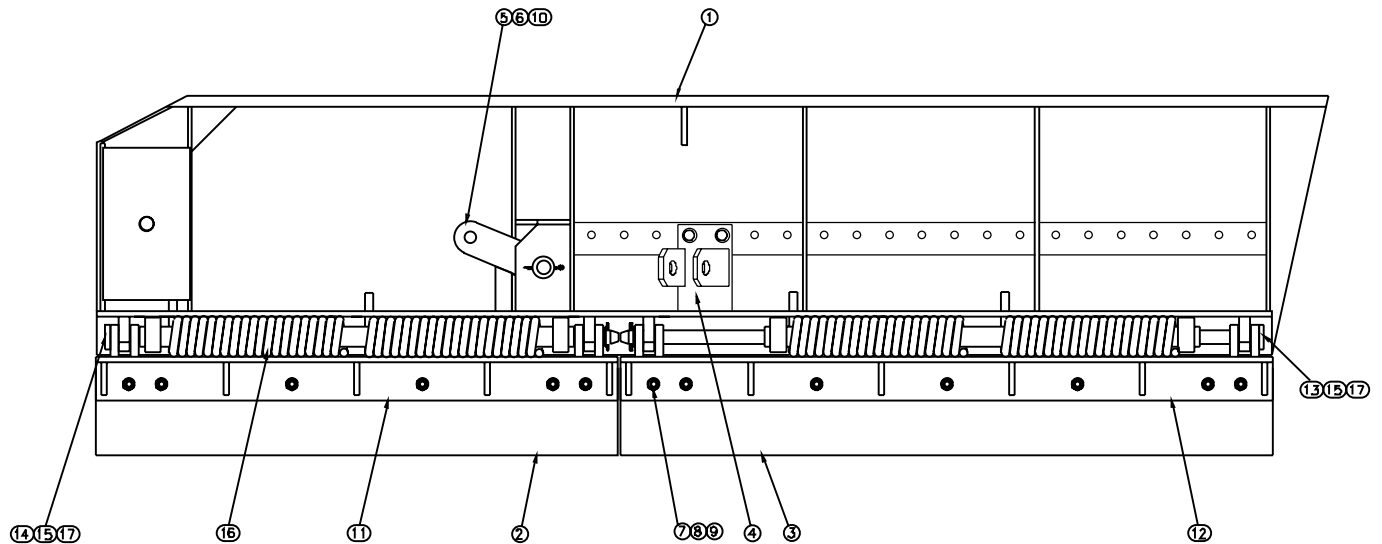
**Right Shown/Left Opposite*



| ITEM | QTY | PART # | DESCRIPTION |
|------|-----|----------|--|
| 1 | 1 | 00038827 | Wing Weldment, 8', Trip Edge |
| | 1 | 00050121 | Wing Weldment, 8', Trip Edge, LH |
| 2 | 1 | 05031075 | Cutting Edge, 5/8" x 8" x 8' |
| 3 | 1 | 00082726 | Bracket, Push Arm Attachment (See page 27) |
| | 1 | 00082727 | Bracket, Push Arm Attachment, LH (See page 27) |
| 4 | 1 | 00000183 | Link, Cylinder |
| 5 | 1 | 00063059 | Pin Weldment |
| 6 | 10 | 05014551 | Bolt, 5/8"-11 x 2 1/2", GR8, Dome Head, Plain |
| 7 | 10 | 05021383 | Washer, 5/8", Lock, Zinc |
| 8 | 10 | 05020270 | Nut, 5/8"-11, GR8, Hex, Zinc |
| 9 | 1 | 05022005 | Pin, 1/4" x 3", Cotter |
| 10 | 1 | 00038845 | Trip Section Weldment, 8' |
| 11 | 2 | 00038847 | Pivot Rod Weldment |
| 12 | 4 | 05022039 | Pin, 5/16" x 2", Roll, Zinc |
| 13 | 1 | 00033117 | Pin, 1 1/4" x 4" |
| 14 | 2 | 05035036 | Spring, Torsion, 3 5/8" x 16" |
| 15 | 4 | 05021191 | Bushing, 1 1/8" x 1 1/4", Zinc |
| 16 | 1 | 01130620 | 1 1/2 x 6 1/2 Mounting Bolt/Castle Nut (Not Shown) |

OPTIONAL 9' TRIP EDGE JUNIOR WING MOLDBOARD ASSEMBLY

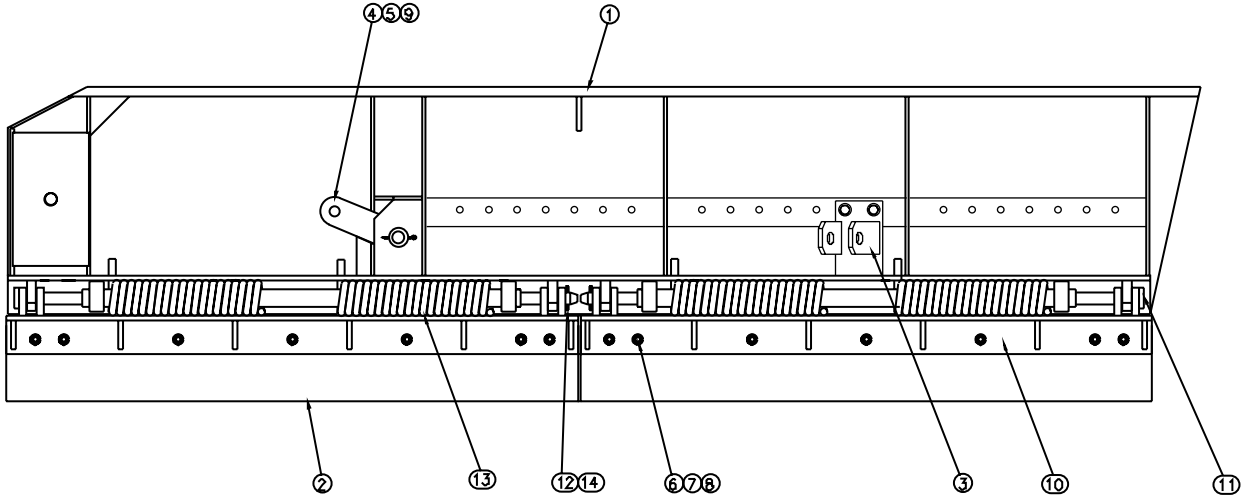
*Right Shown/Left Opposite



| ITEM | QTY | PART # | DESCRIPTION |
|------|-----|----------|---|
| 1 | 1 | 00038828 | Wing Weldment, 9', Trip Edge |
| | 1 | 00050122 | Wing Weldment, 9', Trip Edge, LH |
| 2 | 1 | 05031070 | Cutting Edge, $\frac{5}{8}$ " x 8" x 4' |
| 3 | 1 | 05031071 | Cutting Edge, $\frac{5}{8}$ " x 8" x 5' |
| 4 | 1 | 00082726 | Bracket, Push Arm Attachment <i>(See page 27)</i> |
| | 1 | 00082727 | Bracket, Push Arm Attachment, LH <i>(See page 27)</i> |
| 5 | 1 | 00000183 | Link, Cylinder |
| 6 | 1 | 00063059 | Pin Weldment |
| 7 | 13 | 05014551 | Bolt, $\frac{5}{8}$ -11 x 2 $\frac{1}{2}$ ", GR8, Dome Head, Plain |
| 8 | 13 | 05021383 | Washer, $\frac{5}{8}$ ", Lock, Zinc |
| 9 | 13 | 05020270 | Nut, $\frac{5}{8}$ -11, GR8, Hex, Zinc |
| 10 | 1 | 05022005 | Pin, $\frac{1}{4}$ " x 3", Cotter |
| 11 | 1 | 00038850 | Trip Section Weldment, 4' |
| 12 | 1 | 00038853 | Trip Section Weldment, 5' |
| 13 | 1 | 00037116 | Pivot Rod Weldment |
| 14 | 1 | 00035230 | Pivot Rod Weldment |
| 15 | 2 | 05022039 | Pin, $\frac{5}{16}$ " x 2", Roll, Zinc |
| 16 | 4 | 05035036 | Spring, Torsion, 3 $\frac{3}{8}$ " x 16" |
| 17 | 2 | 05021191 | Bushing, 1 $\frac{7}{8}$ " x 1 $\frac{1}{4}$ ", Zinc |
| 18 | 1 | 01130620 | 1 $\frac{1}{2}$ x 6 $\frac{1}{2}$ Mounting Bolt/Castle Nut <i>(Not Shown)</i> |

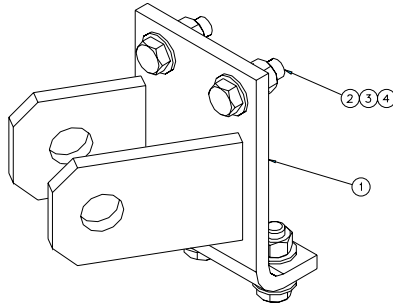
OPTIONAL 10' TRIP EDGE JUNIOR WING MOLDBOARD ASSEMBLY

**Right Shown/Left Opposite*



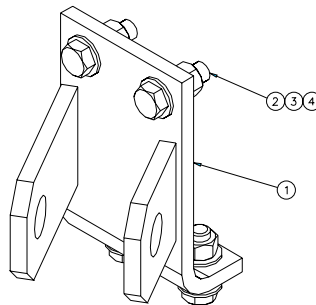
BEARING ADJUSTER ASSEMBLY PARTS LIST

| ITEM | QTY | PART # | DESCRIPTION |
|------|-----|----------|---|
| 1 | 1 | 00038829 | Wing Weldment, 10', Trip Edge |
| | 1 | 00050123 | Wing Weldment, 10', Trip Edge, LH |
| 2 | 2 | 05031071 | Cutting Edge, 5/8" x 8" x 5' |
| 3 | 1 | 00082726 | Bracket, Push Arm Attachment <i>(See page 27)</i> |
| | 1 | 00082727 | Bracket, Push Arm Attachment, LH <i>(See page 27)</i> |
| 4 | 1 | 00000183 | Link, Cylinder |
| 5 | 1 | 00063059 | Pin Weldment |
| 6 | 14 | 05014551 | Bolt, 5/8"-11 x 2 1/2", GR8, Dome Head, Plain |
| 7 | 14 | 05021383 | Washer, 5/8", Lock, Zinc |
| 8 | 14 | 05020270 | Nut, 5/8"-11, GR8, Hex, Zinc |
| 9 | 1 | 05022005 | Pin, 1/4" x 3", Cotter |
| 10 | 2 | 00038853 | Trip Section Weldment, 5' |
| 11 | 2 | 00037116 | Pivot Rod Weldment |
| 12 | 2 | 05022039 | Pin, 5/16" x 2", Roll, Zinc |
| 13 | 4 | 05035036 | Spring, Torsion, 3 5/8" x 16" |
| 14 | 2 | 05021191 | Bushing, 1 1/8" x 1 1/4", Zinc |
| 15 | 1 | 01130620 | 1 1/2 x 6 1/2 Mounting Bolt/Castle Nut <i>(Not Shown)</i> |



00082726 BRACKET, PUSHARM

| ITEM | QTY | PART # | DESCRIPTION |
|------|-----|----------|---|
| 1 | 1 | 00063052 | Bracket Weldment, Pusharm Attachment |
| 2 | 4 | 05010739 | Bolt, $\frac{5}{8}$ -11 x 2, G8, HHCS, ZC |
| 3 | 8 | 05021017 | Washer, $\frac{5}{8}$, Flat, ZC |
| 4 | 4 | 05020837 | Nut, $\frac{5}{8}$ -11, GC, Toplock, C&W |



00082727 BRACKET, PUSHARM, LH

| ITEM | QTY | PART # | DESCRIPTION |
|------|-----|----------|---|
| 1 | 1 | 00045313 | Bracket Weldment, Pusharm Attachment, LH |
| 2 | 4 | 05010739 | Bolt, $\frac{5}{8}$ -11 x 2, G8, HHCS, ZC |
| 3 | 8 | 05021017 | Washer, $\frac{5}{8}$, Flat, ZC |
| 4 | 4 | 05020837 | Nut, $\frac{5}{8}$ -11, GC, Toplock, C&W |

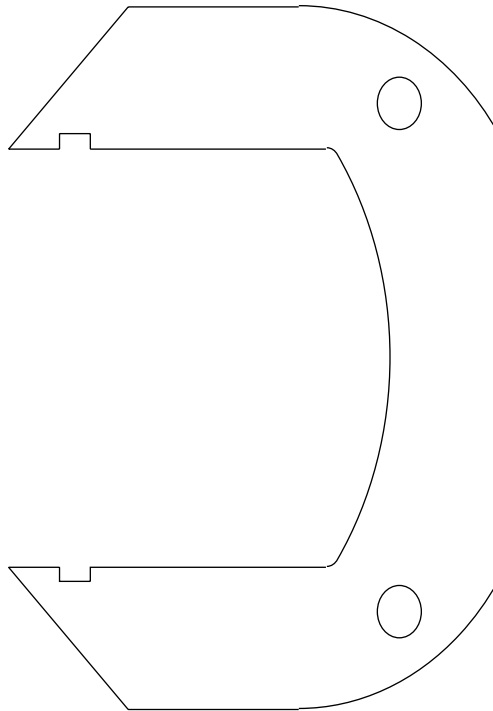
MOUNTING HARDWARE KIT, JR WING

| ITEM | QTY | PART # | DESCRIPTION |
|------|-----|----------|-----------------------------------|
| 1 | 2 | 05051418 | Pipe Ball End |
| 2 | 8 | 00039993 | Angle, 4 x 3 x ½ x 8 |
| 3 | 1 | 05050094 | Hook, Eye Grab, ¾ |
| 4 | 24 | 05010741 | Bolt, ⅝ - 11 x 2½, G8, HHCS, Zinc |
| 5 | 4 | 05010753 | Bolt, ⅝ - 11 x 7, G8, HHCS, Zinc |
| 6 | 1 | 05021318 | Washer, 1½, Flat, Zinc |
| 7 | 28 | 05020837 | Nut, ⅝ - 11, Top Lock, C&W |
| 8 | 1 | 05022007 | Pin, ¼ x 2½, Cotter, Zinc |
| 9 | 1 | 00030114 | Chain, ¾ x 16 Links |
| 10 | 1 | 00038868 | Pipe, 2", Sch 80 x 42" |
| 11 | 56 | 05021017 | Washer, ⅝, Hardened |
| 12 | 2 | 00067926 | Mounting Angle, Pipe Brace |

SHOE KIT, SKID

| ITEM | QTY | PART # | DESCRIPTION |
|------|-----|----------|--|
| 1 | 1 | 05050221 | Moldboard Shoe |
| 2 | 2 | 05014560 | Bolt, $\frac{5}{8}$ -11 x 5, G8, DHCS, Plain |
| 3 | 2 | 05021383 | Washer, $\frac{5}{8}$, Lock, Zinc |
| 4 | 2 | 05020270 | Nut, $\frac{5}{8}$ -11, G8, Hex, Zinc |

00082701 SUPPORT PLATE, POST

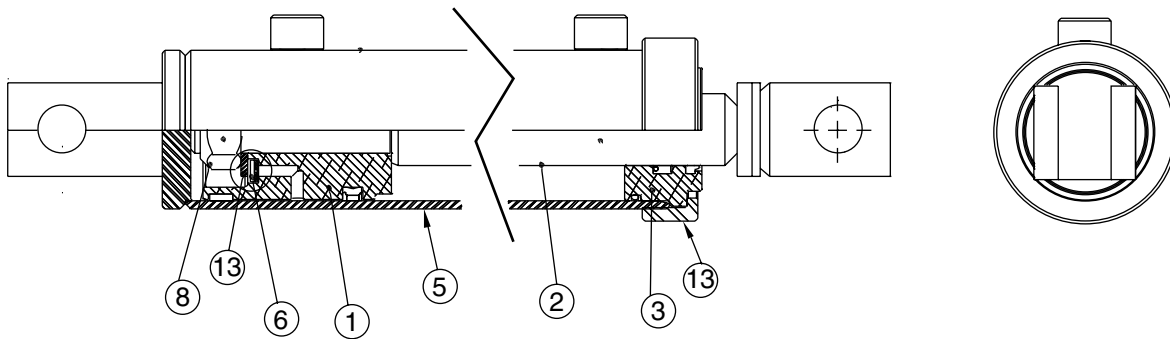


CYLINDERS

Cylinder, 3 X 10, D.A. ($\frac{1}{16}$ - 16 O-Ring Boss Ports)

Part Number 05002818

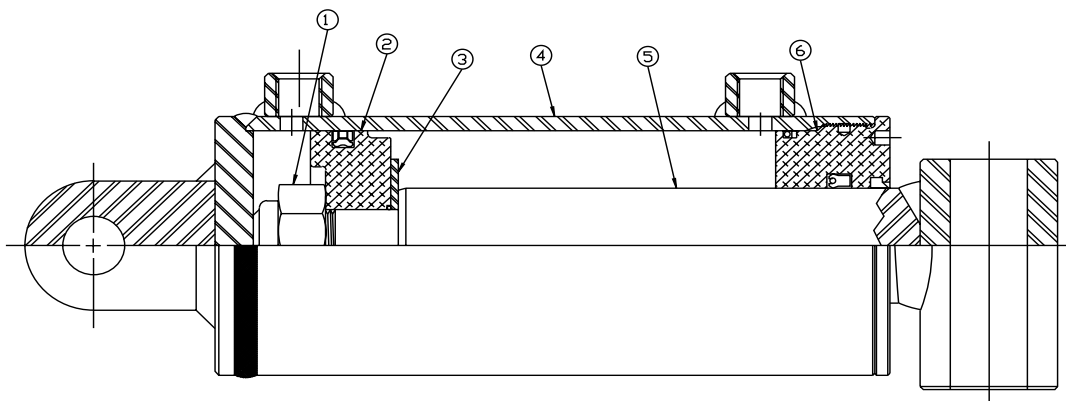
| ITEM | QTY | PART NUMBER | DESCRIPTION |
|------|-----|-------------|---------------|
| 1 | 1 | 05002885 | CASE WELDMENT |
| 2 | 1 | 05002676 | HEAD |
| 3 | 1 | 05002555 | THREAD CAP |
| 10 | 1 | 05002648 | SET SCREW |
| 11 | 1 | 05002886 | ROD WELDMENT |
| 12 | 1 | 05002887 | PISTON |
| 13 | 1 | 05001001 | LOCK NUT |
| 14 | 1 | 05002869 | ORIFICE |
| 16 | 1 | 05002888 | SEAL KIT |
| 17 | 2 | 05001081 | CLEVIS PIN |
| 18 | 4 | 05002504 | PIN CLIP |
| 19 | 2 | 05002559 | PLUG, #8 SAE |
| 22 | 1 | 05002022 | PISTON WASHER |



Cylinder, 4 X 12, D.A. ($\frac{3}{8}$ - 16 UNF2-B O-Ring Ports)

Part Number 05002501

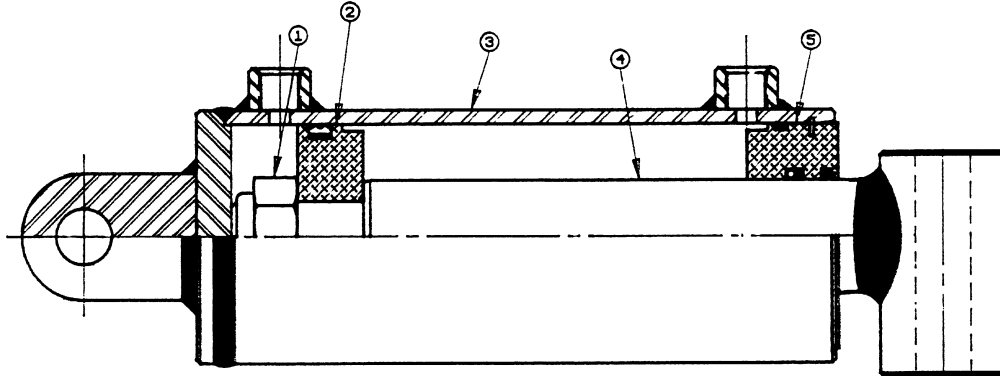
| ITEM | QTY | PART NUMBER | DESCRIPTION |
|------|-----|-------------|--------------------|
| 1 | 1 | 05000022 | NUT, 1.25-12, LOCK |
| 2 | 1 | 05002687 | PISTON |
| 3 | 1 | 05002222 | WASHER, PISTON |
| 4 | 1 | 05002700 | CASE WELDMENT |
| 5 | 1 | 05002701 | ROD WELDMENT |
| 6 | 1 | 05002702 | HEAD |
| 7 | 1 | 05002559 | #8 SAE PLUG |
| | 1 | 05002703 | SEAL KIT |



CYLINDERS

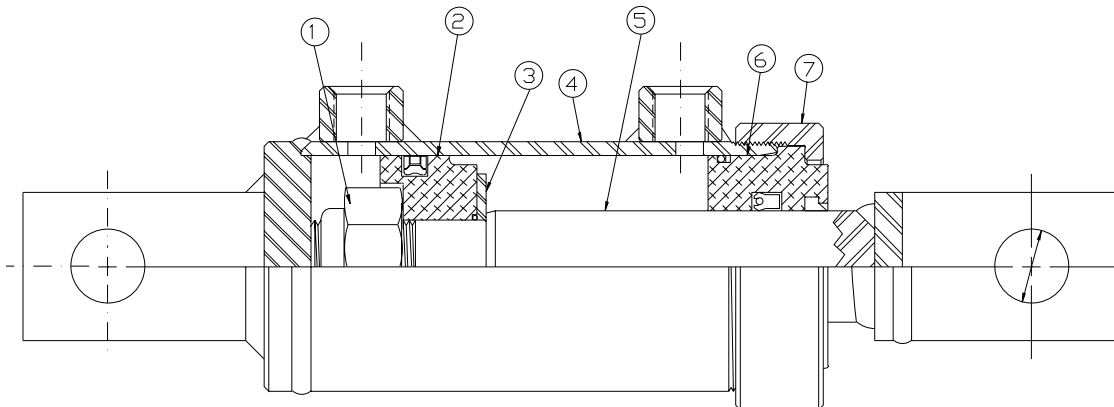
Cylinder, 4 X 12, D.A. (3/4 - 16 O-Ring Boss Ports)
Part Number 05002305

| ITEM | QTY | PART NUMBER | DESCRIPTION |
|------|-----|-------------|------------------|
| 1 | 1 | 05000022 | LOCK NUT, 1-1/4" |
| 2 | 1 | 05000023 | PISTON |
| 3 | 1 | 05002306 | CASE |
| 4 | 1 | 05002307 | ROD |
| 5 | 1 | 05000026 | HEAD |
| | 1 | 05002244 | SEAL KIT |



Cylinder, 4 X 10, D.A. (3/4 - 16 O-Ring Boss Ports)
Part Number 05002717

| ITEM | QTY | PART NUMBER | DESCRIPTION |
|------|-----|-------------|---------------------|
| 1 | 1 | 05000022 | LOCK NUT |
| 2 | 1 | 05002702 | PISTON |
| 3 | 1 | 05002222 | PISTON WASHER |
| 4 | 1 | 05002718 | CASE WELDMENT |
| 5 | 1 | 05002719 | ROD WELDMENT |
| 6 | 1 | 05002628 | HEAD GLAND |
| 7 | 1 | 05002196 | THREAD CAP |
| 8 | 1 | 05002559 | #8 SAE PLUG |
| 9 | 1 | 05002648 | SET SCREW, 1/4 - 20 |
| 10 | 1 | 05002508 | SEAL KIT |
| 11 | 1 | 05001081 | CLEVIS PIN |
| 12 | 1 | 05002728 | CLEVIS PIN CLIP |

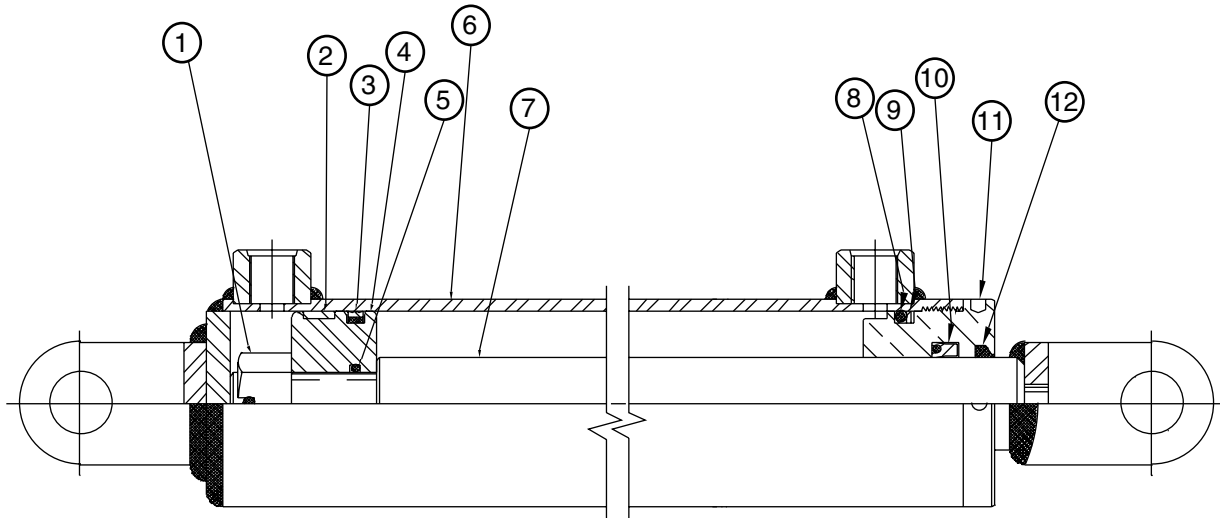


CYLINDERS

Cylinder, 3 X 10, D.A. ($\frac{9}{16}$ - 16 O-Ring Boss Ports)
Part Number 05002502

| ITEM | QTY | PART NUMBER | DESCRIPTION |
|------|-----|-------------|-----------------|
| 1 | 1 | 05002854 | SLOTTED NUT |
| 2 | 1 | --- | WEAR RING |
| 3 | 1 | --- | PISTON ALUMINUM |
| 4 | 1 | 05002852 | PISTON STEEL |
| 5 | 1 | --- | O-RING |
| 6 | 1 | --- | JACKET ASSEMBLY |
| 7 | 1 | --- | PISTON ROD |
| 8 | 1 | --- | O-RING |
| 9 | 1 | --- | BACKUP WASHER |
| 10 | 1 | --- | POLY PAK |
| 11 | 1 | 05002899 | GLAND NUT |
| 12 | 1 | --- | ROD WIPER |

Items 2,3,5,8,9,10, and 12 are ordered as a kit. Kit part number 05002851.



HOW TO ORDER PARTS

To order or inquire about replacement parts, please contact the **distributor** or **store** that the product was purchased through. To speed the information flow, please have the following information ready:

- Model Number
- Serial Number
- Part Number and/or description as per the parts manual
- Quantity needed

For further information about **Monroe Truck Equipment** replacement parts, please call 800-880-0109 and ask for **Snow & Ice Parts Sales**.

RETURN POLICY

Merchandise returned to **Monroe Truck Equipment** must have a Warranty Service Request (WSR) form filled out completely and signed by authorized personnel. To get your WSR form, call 800-880-0109. For whole goods ask for **Snow & Ice Sales**. For replacement parts, ask for **Snow & Ice Parts Sales**. All returned items are subject to a 15% restocking fee and must be sent freight prepaid!

MONROE TRUCK EQUIPMENT, INC. WARRANTY SNOW & ICE CONTROL PRODUCTS

Monroe Truck Equipment, Inc. warrants to the original purchaser, that if any part of the product proves to be defective in workmanship or material within **ONE YEAR** of the original installation, and is returned to us within 30 days of the discovered defect, we will (at our option) repair or replace the defective part. This warranty does not apply to damage resulting from misuse, neglect, accident, improper installation, normal wear items or lack of maintenance. This warranty is exclusive and supersedes all other warranties, whether expressed or implied. **Monroe Truck Equipment, Inc.** neither assumes, nor authorizes anyone to assume for it, any other obligation or liability in connection with this warranty and will not be liable for consequential damages.

All engines, pumps, motors, cylinders and valves are warranted by their manufacturer and not by **Monroe Truck Equipment, Inc.**. The manufacturer's warranty will apply to these parts. Electrical and hydraulic components are not to be disassembled without the express written permission of Monroe Truck Equipment. Use of replacement parts other than original equipment voids this warranty.

All defective parts returned must be accompanied by the model number, serial number, date installed, date of defect, description of defect, and the name of the distributor from whom it was purchased. All warranty claims must have prior written approval from **Monroe Truck Equipment, Inc.**

Please return the warranty registration card that accompanies this manual to confirm receipt of this parts catalog and acknowledge the information contained within. Failure to return the attached card may result in a voided warranty.



1051 West 7th Street
Monroe, WI 53566
608-328-8127 ~ Fax: 608-328-4278

Warranty Policy

Uninstalled Parts and Equipment Provided by Monroe Truck Equipment

Monroe Truck Equipment will provide the following limited warranty for a period of one year to the original purchaser of all uninstalled goods provided by Monroe Truck Equipment:

LIMITED WARRANTY: All goods provided by Monroe Truck Equipment (MTE) will be free from defects in material and workmanship for a period of one year from the date of purchase by the original purchaser. This limited warranty shall be the sole and exclusive remedy for any such product found to be defective. This limited warranty supercedes all previous warranties and is exclusive and in lieu of all other warranties, whether expressed or implied.

This limited warranty applies only to parts or accessories manufactured by MTE and/or provided by same. Except with respect to title, this limited warranty does not pertain to parts or accessories not manufactured and/or provided by MTE, regardless of whether such parts or accessories were selected and/or recommended by MTE. MTE will, as a service to the buyer, pass on any warranties received from the original manufacturer of MTE provided parts and/or accessories.

MTE will not under any circumstances be liable for any incidental or consequential damages whether in tort, contract, or otherwise, for any bodily injury, death, property damage, loss of use, or loss of income resulting from or in any way arising out of any goods provided by MTE, or their sale, use, or manufacture.

Any warranty claim deemed to be arising from the result of misuse, abuse, neglect, accident, improper installation, lack of maintenance, act of war (whether declared or otherwise), or act of God will be denied. Any repair or modification by the buyer or any third party, without the prior written consent of MTE, will void any possible warranty compensation. Any damage deemed to be the result of abnormal operation will not be compensated by this warranty.

Normal or special maintenance items such as fuels, fluids, tires, belts, hoses, filters, air cleaners, light bulbs, and any other items subject to normal wear and tear that are supplied in connection with goods provided by MTE are not allowed under this warranty.

All engines, pumps, cylinders, valves, and motors are warranted by their manufacturer and not by Monroe Truck Equipment. The manufacturer's warranty will apply to these parts. Electrical and hydraulic components are not to be disassembled without the express written consent of MTE. Any disassembly of MTE provided components without prior authorization will void the applicable warranty.

Monroe Truck Equipment shall be the sole and final determining authority as it applies to the administration of this warranty policy. Purchaser acknowledges receipt of Monroe Truck Equipment Warranty Policy and agrees to be bound by same.



GLOBAL SOLUTIONS
ARMORED VEHICLES ~ SPORT TRUCK CONVERSIONS
MUNICIPAL SNOW & ICE CONTROL ~ FIRE APPARATUS
PICKUP TRUCK ACCESSORIES ~ TRUCK EQUIPMENT/MODIFICATIONS





1051 West 7th Street
Monroe, WI 53566
608-328-8127 ~ Fax: 608-328-4278

Any and all warranty claims must be forwarded to MTE within 10 days of defect discovery. A copy of the original Monroe Truck Equipment invoice as well as the manufacturer's model number, serial number, and date of installation must accompany all correspondence regarding said claims. MTE will, at their option, choose whether to repair or replace the defective part unless otherwise specified by the original manufacturer of said part.

Procedures for Warranty Claims Notification

For submission of any warranty claim please contact Monroe Truck Equipment – Warranty Department at 800-356-8134

The following documentation will be needed when you call for initial warranty authorization:

1. A copy of the original MTE invoice.
2. Make, Model, and VIN or Serial Number of the equipment involved.
3. Part number and serial number of the part in question.
4. A complete description of the problem.

The following must accompany any claim submitted to Monroe Truck Equipment:

1. Documented photographs of any physical damage.
2. Inspection notes by MTE personnel or MTE authorized 3rd party.
3. Authorization number issued by Monroe Truck Equipment – Warranty Department.

Defective parts must be returned to Monroe Truck Equipment (freight prepaid) within 30 days of issuance of Authorization Number.

Monroe Truck Equipment reserves the right to void any warranty for failure to comply with Monroe Truck Equipment Warranty Policy.

This policy is effective October 11, 2012

