



MF5 SCRAPER

Service and Parts Manual



MONROE SNOW & ICE CONTROL
A Division of Monroe Truck Equipment
1051 W. 7th Street
Monroe, WI 53566
Phone: 608-328-8127
Fax: 608-329-8488

05050501-12
6/10/2014

TABLE OF CONTENTS

SAFETY INSTRUCTIONS	Page 2
MAINTENANCE INSTRUCTIONS	Page 3
GENERAL INFORMATION	Page 4
HYDRAULIC DIAGRAMS	Page 5
INSTALLATION INSTRUCTIONS & DIAGRAMS	Page 6-10
REPLACEMENT PARTS	Page 12-19
HOW TO ORDER PARTS	Page 20
RETURN POLICY	Page 20
WARRANTY REGISTRATION	Page 21-22

SAFETY INSTRUCTIONS

- Read all installation, safety and maintenance instructions completely before operating this equipment.
- Keep all personnel clear of moving parts while scraper is being operated.
- Lower the scraper blade to full down position, apply emergency brake and stop engine before leaving the vehicle to inspect scraper.
- Do not operate truck in reverse with scraper blade in down position!
- Do not operate a scraper in need of maintenance! Repair immediately!
- While operating this equipment use common sense, use caution, be alert and be safety-conscious.
- **Before installation of this scraper, or maintenance to scraper or truck, apply the parking brake, chock the rear wheels and remove the key from the ignition switch.**

CYLINDER OPERATING SAFETY PROCEDURES

- ✓ Operating pressure on the **down side** of the curl or raise/lower cylinder(s) should not exceed 400 psi. The relief valve we furnish is factory preset. It must be installed on the down side of all scrapers. **Changing the pressure may cause damage to the cylinder, possible injury, and will void the warranty.**
- ✓ System pressure should not exceed 1850 psi for the upside of the curl cylinder(s). High pressure systems require additional relief valves (not furnished). **Exceeding this pressure may cause damage to the cylinder(s), possible injury, and will void the warranty.**



DANGER

AVOID HIGH-PRESSURE FLUIDS

Escaping fluid under pressure can penetrate the skin causing serious injury.

Avoid the hazard by relieving pressure before disconnecting hydraulic or other lines. Tighten all connections before applying pressure.

Search for leaks with a piece of cardboard. Protect hands and body from high pressure fluids.

If an accident occurs, see a doctor immediately. Any fluid injected into the skin must be surgically removed within a few hours or gangrene may result.

MAINTENANCE INSTRUCTIONS

In Season:

- Check for loose bolts and nuts daily, and re-torque before use. (Failure to inspect equipment on a daily basis may seriously affect safety and/or efficiency.)
- Check all hydraulic fittings for tightness on a regular basis.
- Check cutting edge for wear. Do not let cutting edge wear closer than $\frac{1}{2}$ " to $\frac{3}{8}$ " from moldboard.
- Due to the nature of use and environment this scraper is operating in, damage and wear may occur at anytime. Therefore, **Monroe Truck Equipment** recommends the end user establish and follow a daily inspection routine before using this scraper.

Off Season: *(If Applicable)*

- Use care when disconnecting hydraulic lines to assure that no dirt or foreign objects enter the hydraulic system. Use caps to cover hydraulic hose fittings and insert plugs into hydraulic ports.
- Hydraulic cylinder(s) should be fully retracted when stored during the off season to prevent damage or corrosion. The remaining exposed shaft surface should be coated with a thick grease to prevent corrosion, which must be removed before returning to regular service.
- Check mounting bolts for wear and/or damaged threads and replace before re-mounting.

Warning - Canister/cylinder assembly contains a spring under pressure and can only be serviced by qualified personnel. Improper disassembly or assembly could result in serious injury or death.

GENERAL INFORMATION

- Location descriptions are noted in direction of travel. (i.e. front, rear, left and right.)




- Delivery of replacement parts is subject to our sales delivery terms.

- Use only **Monroe Truck Equipment** O.E.M. replacement parts. Failure to do so will void warranty.

- Replacement parts listed in this manual reflect our most common MF5 Scraper items. If you do not find the part you require, please call your distributor.

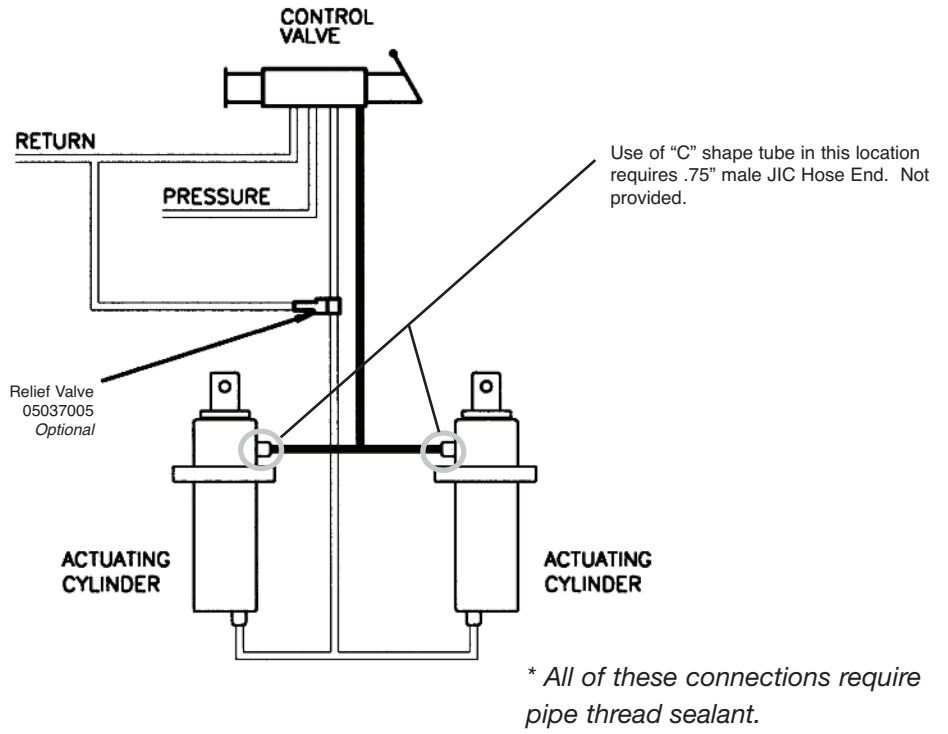
- **Monroe Truck Equipment** reserves the right to make revisions or alterations to this parts manual.

TORQUE CHART

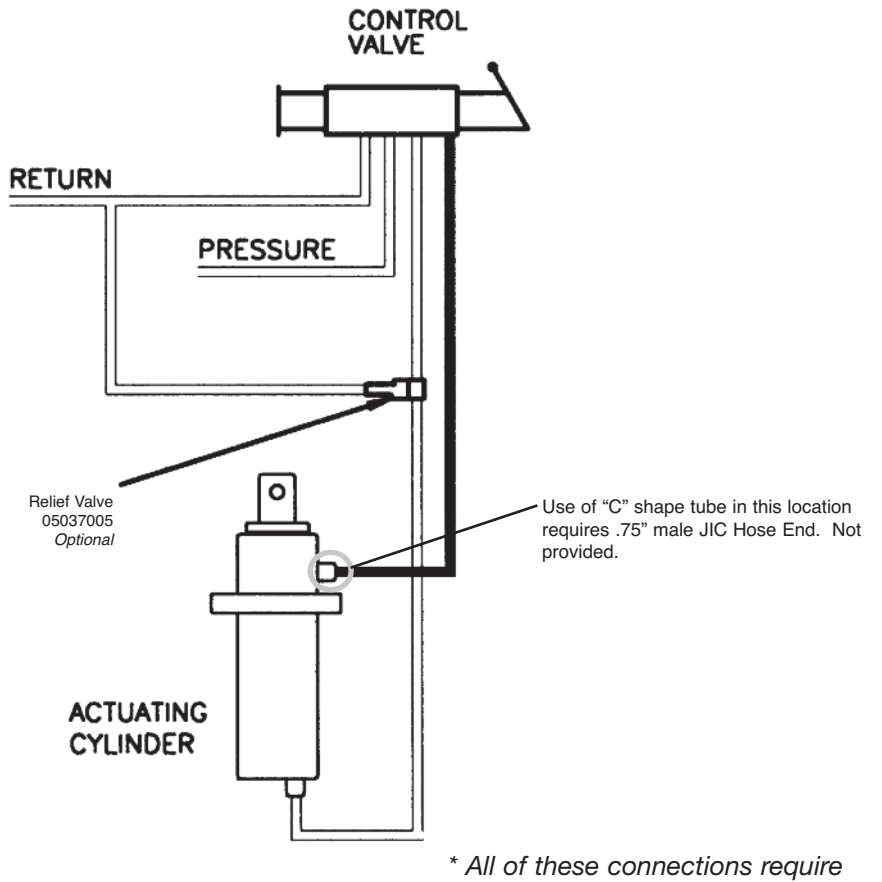
SIZE	 GRADE 2	 GRADE 5	 GRADE 8
1/4-20	50 IN-LBS	75 IN-LBS	9 FT-LBS
3/8-16	15 FT-LBS	23 FT-LBS	35 FT-LBS
1/2-13	35 FT-LBS	55 FT-LBS	80 FT-LBS
5/8-11	75 FT-LBS	110 FT-LBS	170 FT-LBS
3/4-10	130 FT-LBS	200 FT-LBS	280 FT-LBS
1-8	190 FT-LBS	480 FT-LBS	680 FT-LBS
1 1/4-7	380 FT-LBS	840 FT-LBS	1360 FT-LBS

HYDRAULIC DIAGRAM

Dual MF5



Single MF5



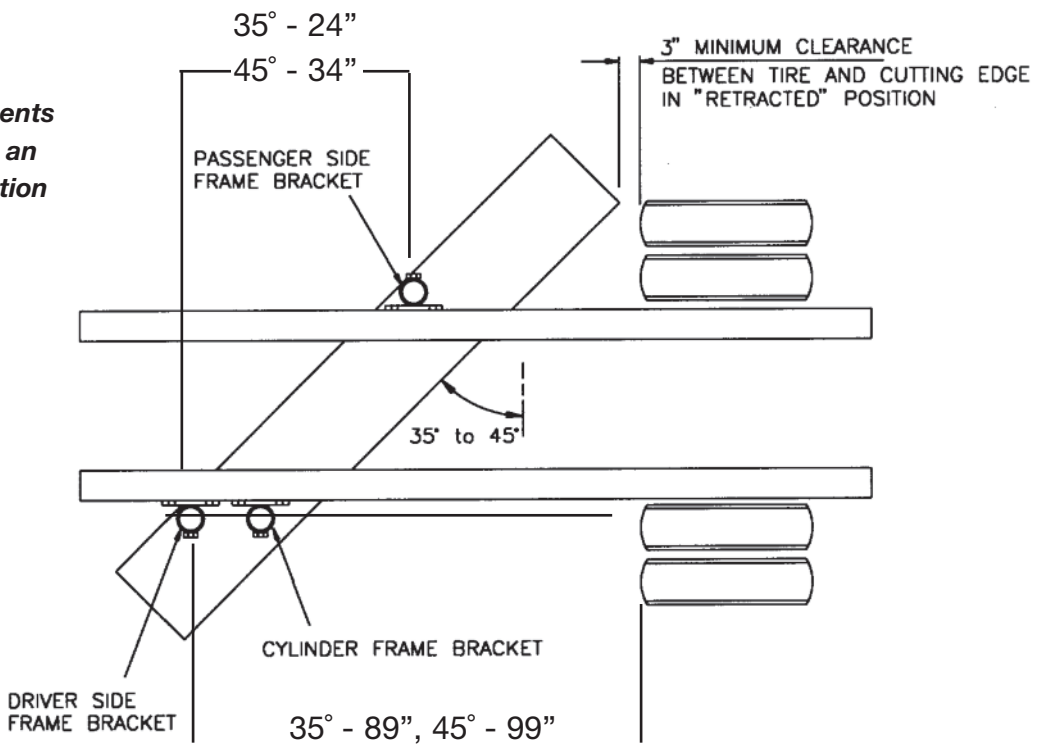
INSTALLATION INSTRUCTIONS FOR SINGLE CYLINDER

NOTICE: This "Safety Check" ✓ symbol is a reminder to follow all safety messages and precautions involved when installing or operating the MF5 Scraper. It means to be **CAREFUL, ALERT** and **SAFETY CONSCIOUS!!!**

1. Slide hanger legs and the main bracket assembly onto moldboard's hinge shaft with collars, as shown in photo on front cover. Do not torque.
2. Position moldboard under vehicle at desired discharge (right or left), at an angle between 35 and 45 degrees, perpendicular to the direction of travel. The end of the cutting edge must discharge bladed material beyond rear tire.
3. Position and clamp driver's side frame bracket to truck frame and drill (6) holes through frame. Secure frame bracket with (6) bolts, lock nuts, and washers. (5/8"-11 x 2 1/2", grade 8) Apply rust inhibitor or paint to any drilled holes.
4. Hoist moldboard, in "retracted" position, into desired location making sure that minimum clearance to rear tire is 3". Position and clamp passenger side frame bracket and drill (6) holes through frame. Secure with (6) bolts, lock nuts and washers. (5/8"-11 x 2 1/2", grade 8) ✓ **Stay clear of area beneath moldboard while hoisting it to underside of truck frame!**
5. Position and clamp the cylinder frame bracket to the truck frame and drill (6) holes through the frame. Secure the frame bracket with (6) bolts, lock nuts and washers (5/8"-11 x 2-1/2", grade 8). **NOTE:** The cylinder frame bracket must be mounted to the outside of the truck frame on the leading side of the scraper. If the cylinder frame bracket is not mounted on the leading side of the scraper the moldboard will not be properly supported. The results of a poorly supported moldboard could be, but not limited to vibration, wear and failure of the scraper. If the scraper is not mounted in this manner Monroe Truck Equipment, Inc. reserves the right to void the warranty.

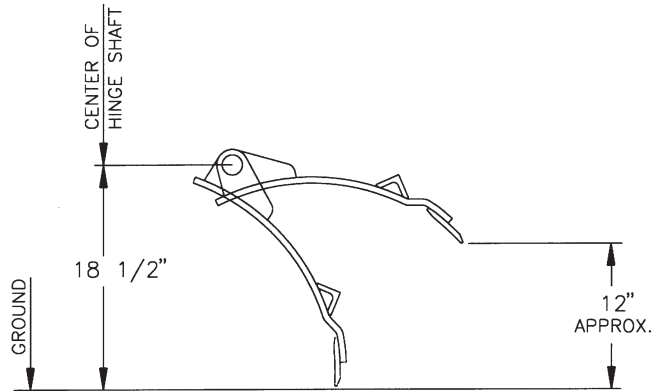
Example: If the desired installation of the scraper is to discharge material to the right then the cylinder frame bracket must be mounted on the left side of the truck frame. If the desired installation of the scraper is to discharge material to the left then the cylinder frame bracket must be mounted on the outside right side of the truck frame.

***The measurements shown are an approximation for a 12' scraper.



INSTALLATION INSTRUCTIONS FOR SINGLE CYLINDER

- Secure the cylinder hanger leg to the main bracket assembly by inserting attachment pin (00113085) through hanger weldment (00113084). **Note:** The 1" washer must be welded to the bottom of the main bracket assembly when it is lined up to prevent the washer from slipping.
- Hoist moldboard, in "retracted" position, and slide hanger legs into tubes of mounted frame brackets and cylinder bracket. Locate moldboard so that the center of hinge shaft is 18½" off ground and the cutting edge is approximately 12" from ground. Double-check tire clearance to cutting edge, it must be a minimum of 3". **✓ Stay clear of area beneath moldboard while hoisting it to underside of truck frame!**



MOLDBOARD IN "RETRACTED" POSITION
AND IN FULL DOWN POSITION

- Finalize positions of all collars and brackets and tighten all bolts and set screws. Remove center set screws from frame brackets (3), counter-sink ½" hole in hanger legs, then replace. Anchor canister/cylinder to moldboard.
- Connect hose lines to the cylinder from power source (hydraulic or compressed air).
- In case of hydraulic electric system, locate the hydraulic unit in suitable location for easy handling of control by the operator.

Operate all functions of the scraper, check for oil leaks. **✓ Stay clear of area beneath and near moldboard assembly while performing these operating tests. Use caution!**

Caution: After some usage, check all set screws and bolts to be sure they are tight. When blade is used with other hydraulic systems, be sure retract operating pressure does not exceed 1850 PSI. A 400 PSI bypass valve is furnished for the down side.

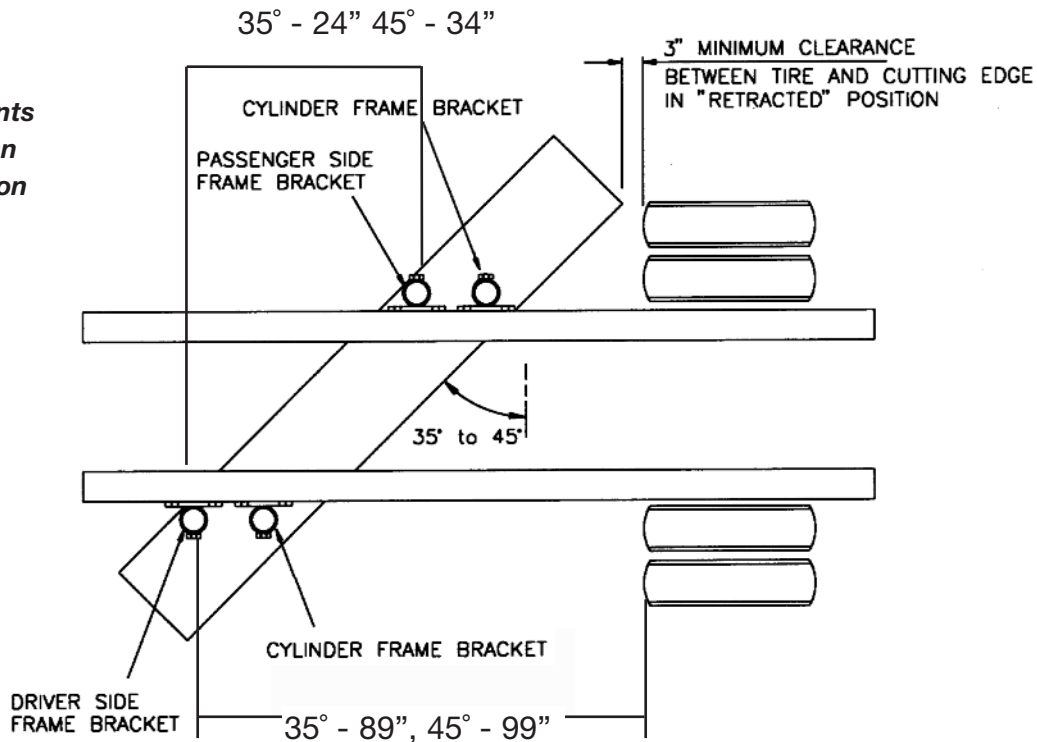
These mounting instructions are intended as a guide to aid you in the installation of your **Monroe Scraper**. All dimensions noted in the instructions are approximate and may vary due to: make and model of chassis, tire size, type of suspension, spring deflection, customer preference, and interference caused by immovable attachments such as a transfer case. Ideally, the scraper should be mounted to get full usage of the cutting edge without wearing into the moldboard. **Monroe Truck Equipment** assumes no responsibility for improper installation, unless installed at a **Monroe Truck Equipment** location. Mounting location should be discussed by the end-user and the installer prior to installation in order to achieve the best possible installation.

OPTIONAL INSTALLATION INSTRUCTIONS FOR DUAL CYLINDER

NOTICE: This "Safety Check" ✓ symbol is a reminder to follow all safety messages and precautions involved when installing or operating the MF5 Scraper. It means to be **CAREFUL, ALERT** and **SAFETY CONSCIOUS!!!**

1. Slide hanger legs and the main bracket assemblies onto moldboard's hinge shaft with collars. Do not torque. Dual cylinder assemblies are not shown.
2. Position moldboard under vehicle at desired discharge (right or left), at an angle between 35 and 45 degrees, perpendicular to the direction of travel. The end of the cutting edge must discharge bladed material beyond rear tire.
3. Position and clamp driver's side frame bracket to truck frame and drill (6) holes through frame. Secure frame bracket with (6) bolts, lock nuts, and washers. (5/8"-11 x 2 1/2", grade 8)
Apply rust inhibitor or paint to any drilled holes.
4. Hoist moldboard, in "retracted" position, into desired location making sure that minimum clearance to rear tire is 3". Position and clamp passenger side frame bracket and drill (6) holes through frame. Secure with (6) bolts, lock nuts and washers. (5/8"-11 x 2 1/2", grade 8) ✓ **Stay clear of area beneath moldboard while hoisting it to underside of truck frame!**
5. Position and clamp cylinder frame brackets to truck frame and drill (12) holes through frame. Secure frame brackets with (12) bolts, lock nuts and washers. (5/8"-11 x 2 1/2", grade 8)

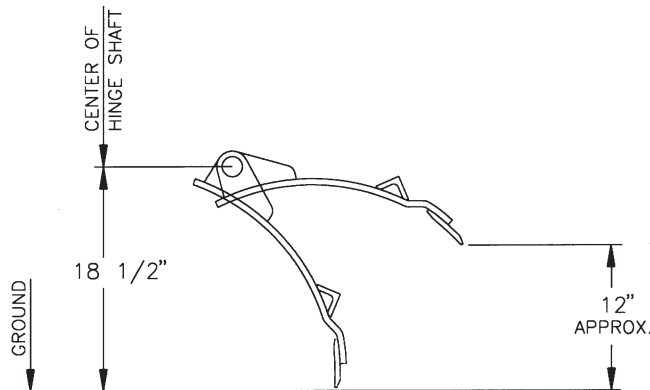
*****The measurements shown are an approximation for a 12' scraper.**



6. Secure the cylinder hanger legs to the main bracket assemblies by inserting attachment pin (00113085) through hanger weldment (00113084). **Note:** The 1" washer must be welded to the bottom of each main bracket assembly when it is lined up to prevent the washer from slipping.

OPTIONAL INSTALLATION INSTRUCTIONS FOR DUAL CYLINDER

7. Hoist moldboard, in "retracted" position, and slide hanger legs into tubes of mounted frame brackets and cylinder brackets. Locate moldboard so that the center of hinge shaft is 18½" off ground and the cutting edge is approximately 12" from ground. Double-check tire clearance to cutting edge, it must be a minimum of 3". ✓ **Stay clear of area beneath moldboard while hoisting it to underside of truck frame!**



MOLDBOARD IN "RETRACTED" POSITION
AND IN FULL DOWN POSITION

8. Finalize positions of all collars and brackets and tighten all bolts and set screws. Remove center set screws from frame brackets (3), counter-sink ½" hole in hanger legs, then replace. Anchor canister/cylinders to moldboard.
9. Connect hose lines to the cylinders from power source (hydraulic or compressed air).
10. In case of hydraulic electric system, locate the hydraulic unit in suitable location for easy handling of control by the operator.

Operate all functions of the scraper, check for oil leaks. ✓ **Stay clear of area beneath and near moldboard assembly while performing these operating tests. Use caution!**

Caution: After some usage, check all set screws and bolts to be sure they are tight. When blade is used with other hydraulic systems, be sure retract operating pressure does not exceed 1850 PSI. A 400 PSI bypass valve is furnished for the down side.

These mounting instructions are intended as a guide to aid you in the installation of your **Monroe Scraper**. All dimensions noted in the instructions are approximate and may vary due to: make and model of chassis, tire size, type of suspension, spring deflection, customer preference, and interference caused by immovable attachments such as a transfer case. Ideally, the scraper should be mounted to get full usage of the cutting edge without wearing into the moldboard. **Monroe Truck Equipment** assumes no responsibility for improper installation, unless installed at a **Monroe Truck Equipment** location. Mounting location should be discussed by the end-user and the installer prior to installation in order to achieve the best possible installation.

INSTALLATION INSTRUCTIONS

CYLINDER OPERATING SAFETY PROCEDURES

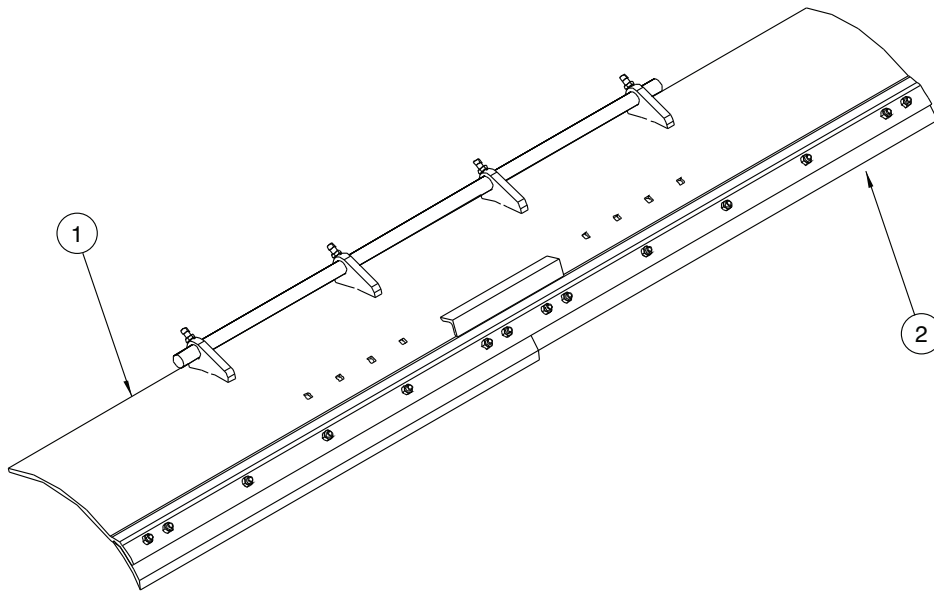
- ✓ Operating pressure on the **down side** of the curl or raise/lower cylinder(s) should not exceed 400 psi. The relief valve we furnish is factory preset. It must be installed on the down side of all scrapers. **Changing the pressure may cause damage to the cylinder, possible injury, and will void the warranty.**

- ✓ System pressure should not exceed 1850 psi for the upside of the curl cylinder(s). High pressure systems require additional relief valves (not furnished). **Exceeding this pressure may cause damage to the cylinder(s), possible injury, and will void the warranty.**

TOOLS REQUIRED

- (2) Floor jacks
- Torque wrench
- ½" Drive impact wrench
- ½" Drive impact socket set
- Combination wrench set
- Hex wrench set
- (2) C-clamps
- Frame drill
- AC Arc or Wire Feed Welder

NOTES



00060385 MLDBD CE ASSY, SCPR, MF510, .625 X 20, .5 X 6 DBC

Item	Qty.	Part Number	Description
1	1	00049800	SCPR,MLDBD ASSY,MF510,.5x20 <i>See page 13</i>
2	1	00041822	SCPR,CE KIT,10',.5x6DBC <i>See page 14</i>
3	1	05050095	TAG,SERIAL NUMBER,1.25x3.5SS

00158166 MLDBD CE ASSY, SCPR, MF510, 1 X 20, .5 X 6 DBC

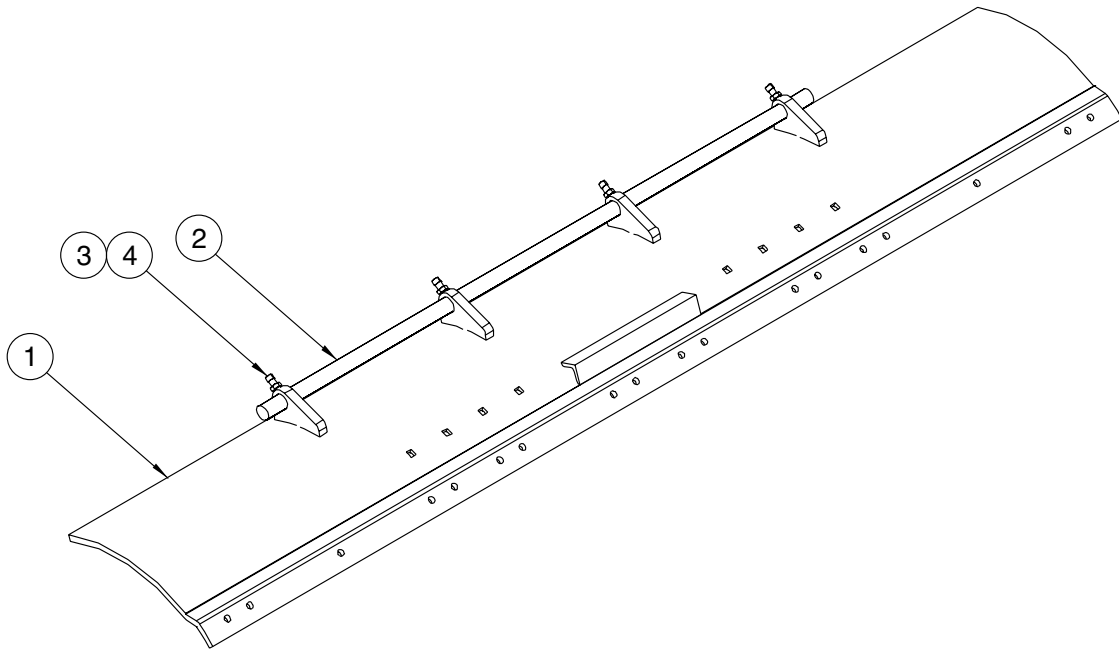
Item	Qty.	Part Number	Description
1	1	00049801	SCPR,MLDBD ASSY,MF510,1x20 <i>See page 13</i>
2	1	00041823	SCPR,CE KIT,11',.5x6DBC <i>See page 14</i>
3	1	00050727	EXTENSION KIT, SCRAPER MOLDBOARD, 1 X 20
4	1	05050095	TAG,SERIAL NUMBER,1.25x3.5SS

00060386 MLDBD CE ASSY, SCPR, MF511

Item	Qty.	Part Number	Description
1	1	00049804	MLDBD ASSY,SCPR,MF511,.5x20 <i>See page 13</i>
2	1	00041823	CE KIT,11',.5x6DBC <i>See page 14</i>
3	1	05050095	TAG,SERIAL NUMBER,1.25x3.5SS

00060387 MLDBD CE ASSY, SCPR, MF512

Item	Qty.	Part Number	Description
1	1	00049808	MLDBD ASSY,SCPR,MF512,.5x20 <i>See page 13</i>
2	1	00041824	CE KIT,12',.5x6DBC <i>See page 14</i>
3	1	05050095	TAG,SERIAL NUMBER,1.25x3.5SS



00049800 MLDBD ASSY, SCPR, MF510, .625 X 20

Item	Qty.	Part Number	Description
1	1	00060215	SCPR,MLDBD WLDMT,MF510,.625x20
2	1	00060252	CRR, 1.563 DIA x 72.000
3	4	05015197	SCREW .625-11 x 1.50 SET SQNUT
4	4	05020122	NUT .625-11 G2 JAM ZC

00049801 MLDBD ASSY, SCPR, MF510, 1X 20

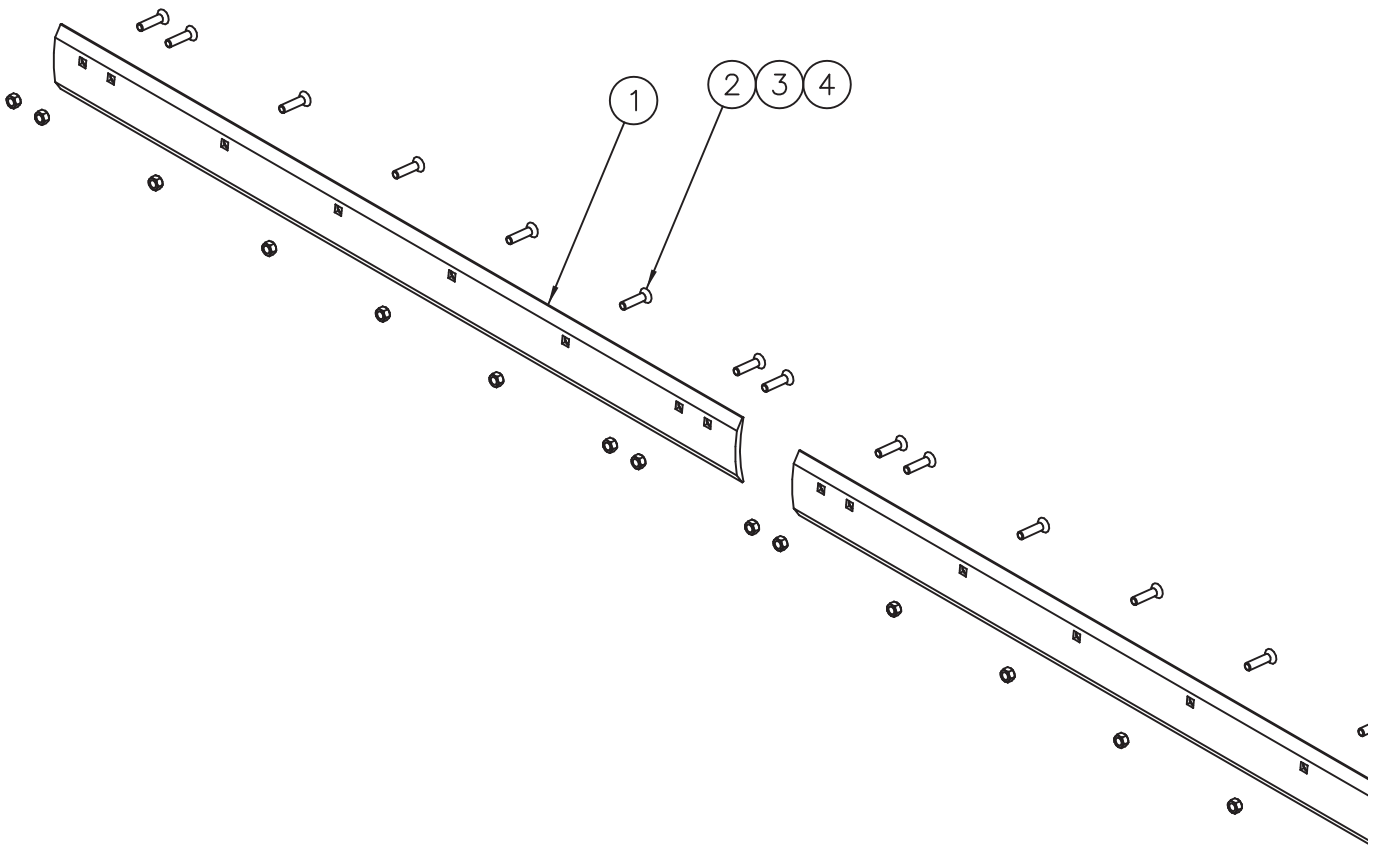
Item	Qty.	Part Number	Description
1	1	00039672	SCPR,MLDBD WLDMT,MF510,1x20
2	1	00060252	CRR, 1.563 DIA x 72.000
3	4	05015197	SCREW .625-11 x 1.50 SET SQNUT
4	4	05020122	NUT .625-11 G2 JAM ZC

00049804 MLDBD ASSY, SCPR, MF511, .625 X 20

Item	Qty.	Part Number	Description
1	1	00060218	MLDBD WLDMT,SCPR,MF511,.5x20
2	1	00060252	CRR, 1.563 DIA x 72.000
3	4	05015197	SCREW .625-11 x 1.50 SQHSS
4	4	05020122	NUT .625-11 G2 JAM ZC

00049808 MLDBD ASSY, SCPR, MF512, .625 X 20

Item	Qty.	Part Number	Description
1	1	00060219	MLDBD WLDMT,SCPR,MF512,.5x20
2	1	00060252	CRR, 1.563 DIA x 72.000
3	4	05015197	SCREW .625-11 x 1.50 SQHSS
4	4	05020122	NUT .625-11 G2 JAM ZC



00041822 CUTTING EDGE KIT, 10', .5 X 6DBC

Item	Qty.	Part Number	Description
1	2	05031113	CUTTING EDGE,.5x6x5' DBC
2	14	05014551	BOLT .625-11x2.5 G8 DOMEHD PLN
3	14	05020270	NUT .625-11 G8 HEX ZC
4	14	05021383	WASHER .625 HVY SPRING LOCK ZC

00041823 CUTTING EDGE KIT, 11', .5 X 6, DBC

Item	Qty.	Part Number	Description
1	1	05031113	CUTTING EDGE,.5x6x5' DBC
2	1	05031114	CUTTING EDGE,.5x6x6' DBC
3	15	05014551	BOLT .625-11x2.5 G8 DH PLN
4	15	05020270	NUT .625-11 G8 HEX ZC
5	15	05021383	WASHER .625 LOCK HVY ZC

00041824 CUTTING EDGE KIT, 12', .5 X 6, DBC

Item	Qty.	Part Number	Description
1	2	05031114	CUTTING EDGE,.5x6x6' DBC
2	16	05014551	BOLT .625-11x2.50 G8 DH PLN
3	16	05020270	NUT .625-11 G8 HEX ZC
4	16	05021383	WASHER .625 LOCK HVY ZC

00011807 CUTTING EDGE KIT, 10', .875 X 5, CARBIDE

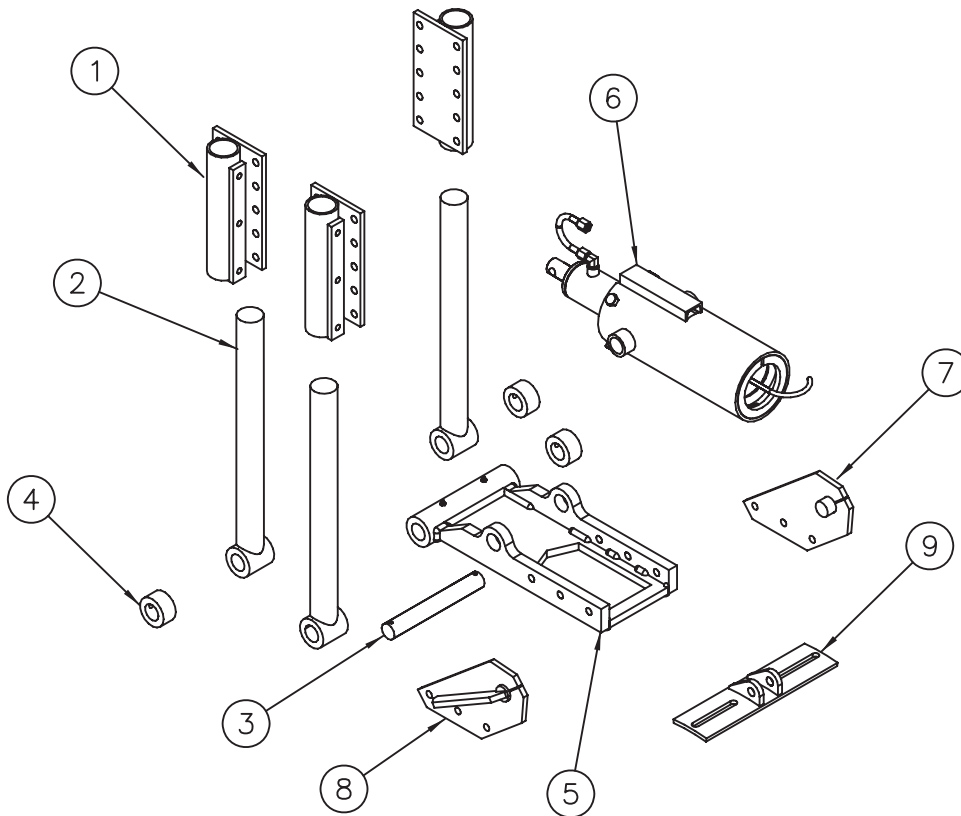
Item	Qty	Part Number	Description
1	14	05014551	BOLT, .625 X 11 X 2.50, G8, DH PLAIN
2	14	05020270	NUT, .625 -11, G8, HEX, ZINC
3	14	05021383	WASHER, .625, LOCK, HEAVY ZINC
4	2	05031005	CUTTING EDGE, CBD, .875 X 5.0 X 5'

00086252 CUTTING EDGE KIT, 11', .875 X 5, CARBIDE

Item	Qty	Part Number	Description
1	1	05031107	CUTTING EDGE, CARBIDE, .875 X 5 X 3', SINGLE CARBIDE
2	2	05031007	CUTTING EDGE, .875 X 5 X 4', SINGLE CARBIDE
3	17	05014551	BOLT, .625 X 11 X 2.50, G8, DH PLAIN
4	17	05020270	NUT, .625 -11, G8, HEX, ZINC
5	17	05021383	WASHER, .625, LOCK, HEAVY ZINC

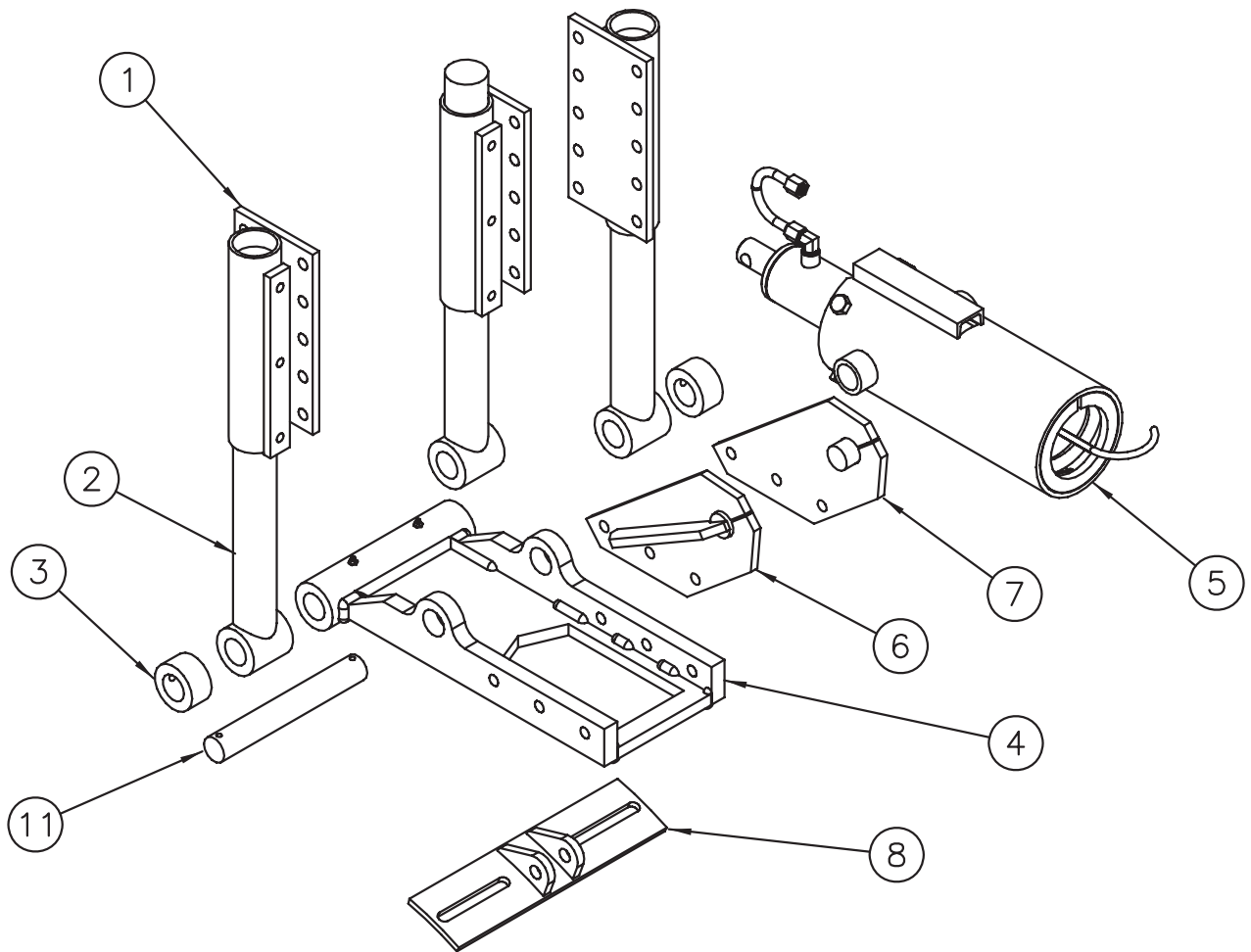
00039629 CUTTING EDGE KIT, 12', .875 X 5, CARBIDE

Item	Qty	Part Number	Description
1	3	05031007	CUTTING EDGE, .875 X 5 X 4', DUAL CARBIDE
2	18	05014551	BOLT, .625 X 11 X 2.50, G8, DH PLAIN
3	18	05020270	NUT, .625 -11, G8, HEX, ZINC
4	18	05021383	WASHER, .625, LOCK, HEAVY ZINC



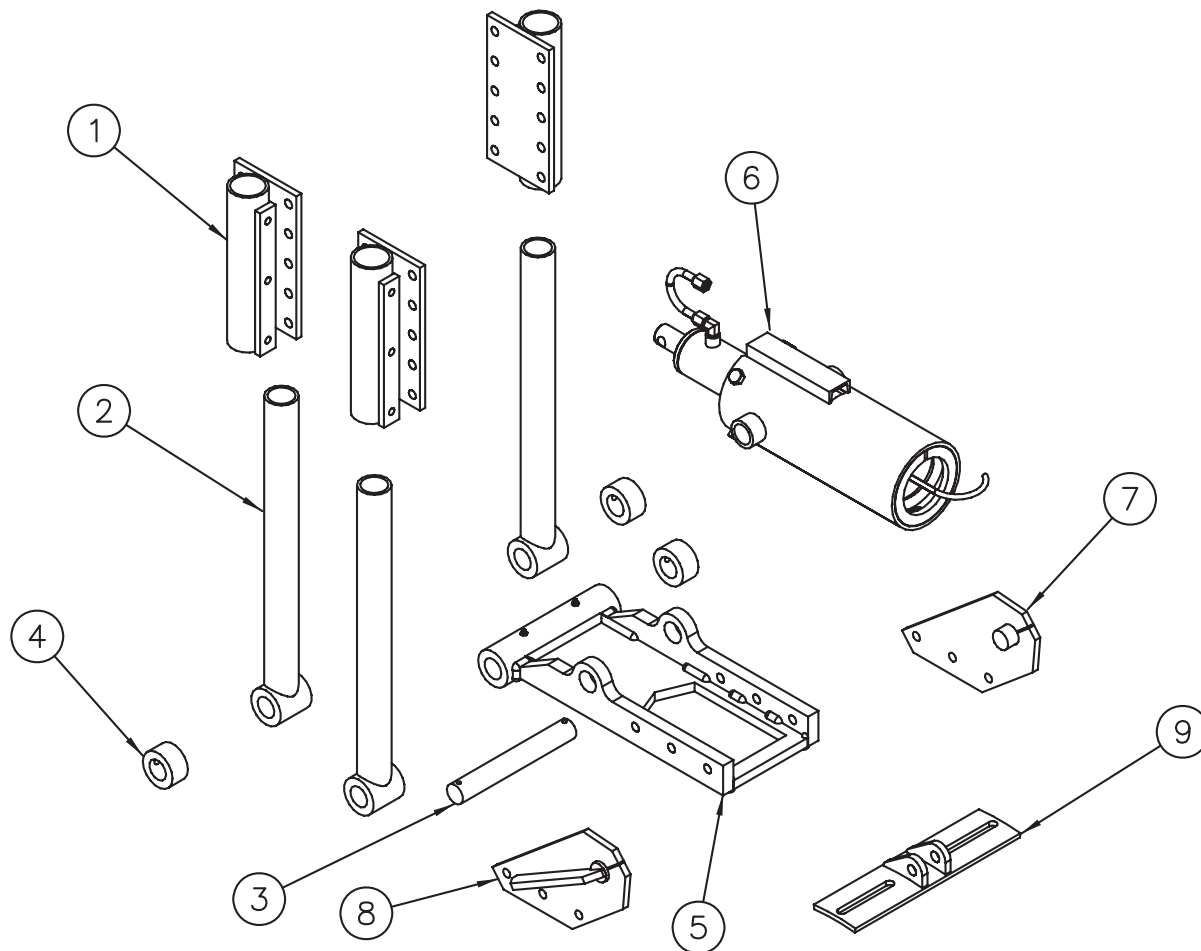
00045863 MOUNTING KIT, SCRAPER, MF5, SINGLE

Item	Qty.	Part Number	Description
1	3	00130493	BRACKET WLDMT,MTG,FRAME,SCPR,MF5
2	3	00060226	BRACKET WLDMT,HANGER,SCPR,MF5
3	1	00113085	PIN,ATTACHMENT,BRKT,HANGER,SCPR,MF5
4	3	00060232	COLLAR ATTACHMENT,MF5
5	1	00113084	HANGER WLDMT,CANISTER,SCPR,MF5
6	1	00041809	CANISTER ASSY,SCPR,MF5,3x11.5 <i>See page 19</i>
7	1	00106495	BRACKET WLDMT,CANISTER MTG,RH
8	1	00106496	BRACKET WLDMT,CANISTER MTG,LH
9	1	00060248	BRACKET,CYLINDER ATCH,MF5
10	1	00060220	MTG BOX,SCPR,MF5
11	1	05051321	WOOD BOX F/MF5 MOUNTING HRDWR
12	1	00053218	DECAL KIT,SCPR



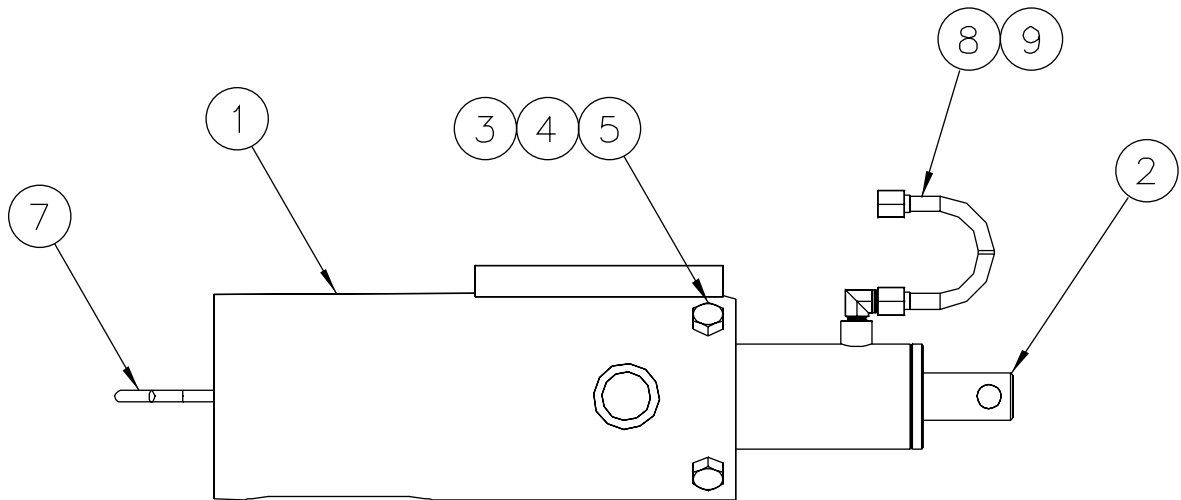
00071003 MOUNTING KIT, SCRAPER, MF5, DOUBLE

Item	Qty.	Part Number	Description
1	4	00130493	BRACKET WLDMT,MTG,FRAME,SCPR,MF5
2	4	00060226	BRACKET WLDMT,HANGER,SCPR,MF5
3	4	00060232	COLLAR ATTACHMENT,MF5
4	2	00113084	HANGER WLDMT,CANISTER,SCPR,MF5
5	2	00041809	CANISTER ASSY,SCPR,MF5,3x11.5 <i>See page 19</i>
6	2	00106496	BRACKET WLDMT,CANISTER MTG,LH
7	2	00106495	BRACKET WLDMT,CANISTER MTG,RH
8	2	00060248	BRACKET,CYLINDER ATCH,MF5
9	1	00039656	MTG BOX,SCPR,MF5 x 2,STANDARD
10	2	05051321	WOOD BOX F/MF5 MOUNTING HRDWR
11	2	00113085	PIN,ATTACHMENT,BRKT,HANGER,SCPR,MF5
12	1	00053218	DECAL KIT,SCPR



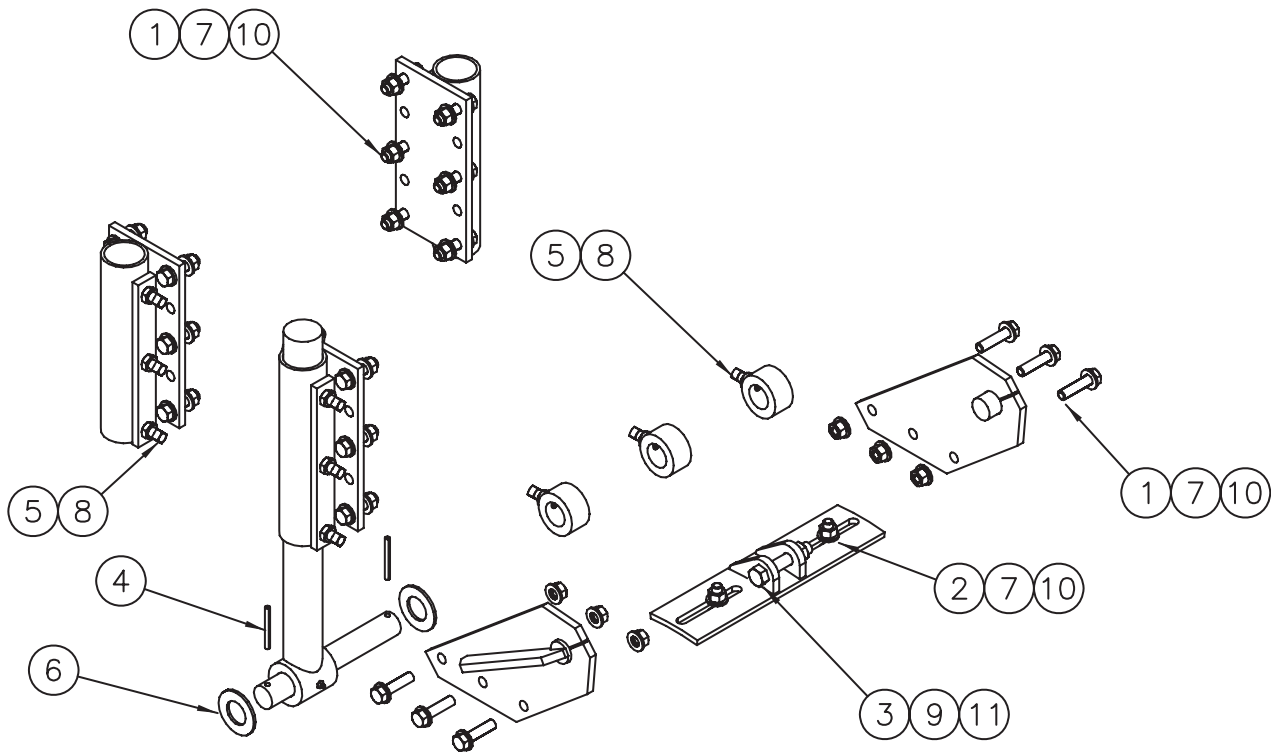
00027027 MOUNTING KIT, SCRAPER, MF5, 2 NIT CYL

Item	Qty.	Part Number	Description
1	3	00130493	BRACKET WLDMT,MTG,FRAME,SCPR,MF5
2	3	00027023	HANGER PIPE WLDMT,MF5,SCRAPER
3	1	00113085	PIN,ATTACHMENT,BRKT,HANGER,SCPR,MF5
4	3	00060232	COLLAR ATTACHMENT,MF5
5	1	00113084	HANGER WLDMT,CANISTER,SCPR,MF5
6	2	00041809	CANISTER ASSY,SCPR,MF5,3x11.5 <i>See page 19</i>
7	1	00106495	BRACKET WLDMT,CANISTER MTG,RH
8	1	00106496	BRACKET WLDMT,CANISTER MTG,LH
9	1	00060248	BRACKET,CYLINDER ATCH,MF5
10	1	00060220	MTG BOX,SCPR,MF5
11	1	05051321	WOOD BOX F/MF5 MOUNTING HRDWR



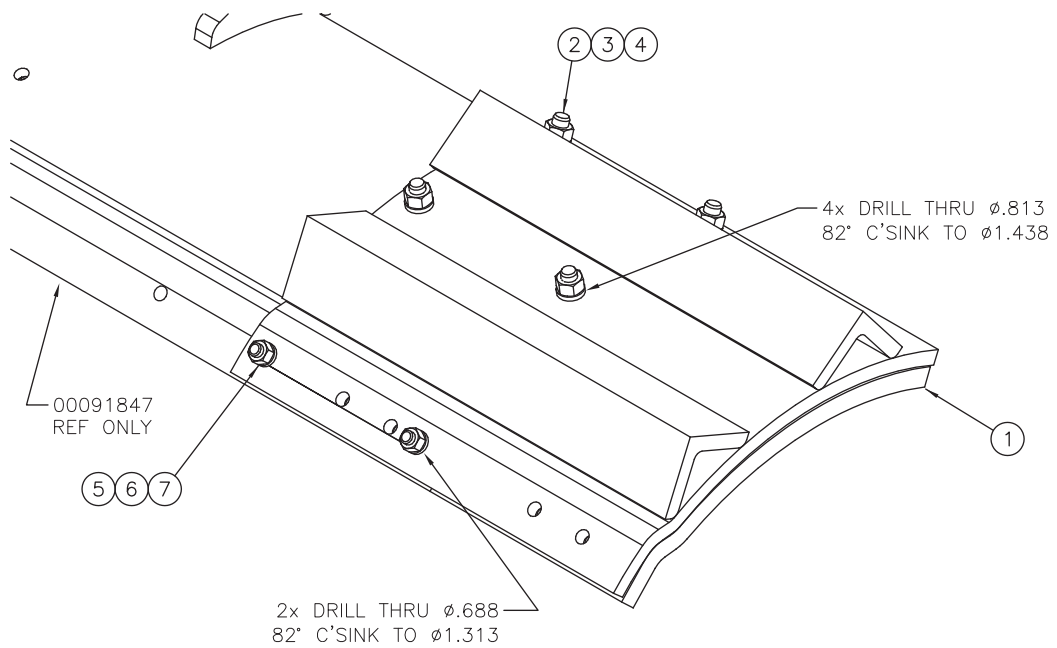
00041809 CANISTER ASSEMBLY, SCRAPER, MF5, 3 X 11.5

Item	Qty.	Part Number	Description
1	1	00060239	CANISTER WLDMT,SCPR,MF5
2	1	05002894	CYLINDER,3.00x11.50,DA,NIT <i>See page 22</i>
3	4	05010736	BOLT .625-11 x 1.25 G8 HHCS ZC
4	4	05020270	NUT .625-11 G8 HEX ZC
5	4	05021383	WASHER .625 LOCK HEAVY ZC
6	1	05035065	SPRING,COMP .8125x5.75x18.5 LG
7	1	05037148	HOSE ASSY, .375 x 18' MF-5
8	1	2501-8-6	HYD FITNG,MALE ELBOW,3/4 JIC x 38 PIPE
9	1	05037348	TUBE,HYD,SS,.5","C" SHAPE,W/(2).75-8FJIC



00060220 MOUNTING BOX, SCPR, MF5

Item	Qty.	Part Number	Description
1	24	05010741	BOLT .625-11 x 2.50 G8 HHCS ZC
2	2	05014702	BOLT .625-11 x 2.25 FSHCS
3	1	05010772	BOLT .750-10 x 4.00 G8 HHCS ZC
4	2	05022044	PIN .313 x 3.000 ROLL ZC
5	12	05015197	SCREW .625-11 x 1.50 SET SQHSS
6	2	05021343	WASHER 1.500 FLAT SAE ZC
7	26	05020837	NUT .625-11 GC TOPLOCK C&W
8	12	05020122	NUT .625-11 G2 JAM ZC
9	1	05020849	NUT .750-10 GC TOPLOCK C&W
10	50	05021017	WASHER .625 FLAT MIL-CARB SAE
11	2	05021018	WASHER .750 FLAT MIL-CARB SAE
12	1	05050501	MANUAL,SCPR,MF5,PARTS & INSTALL
13	1	05051395	CARDBOARD,BOX 12x8x7 WAXED

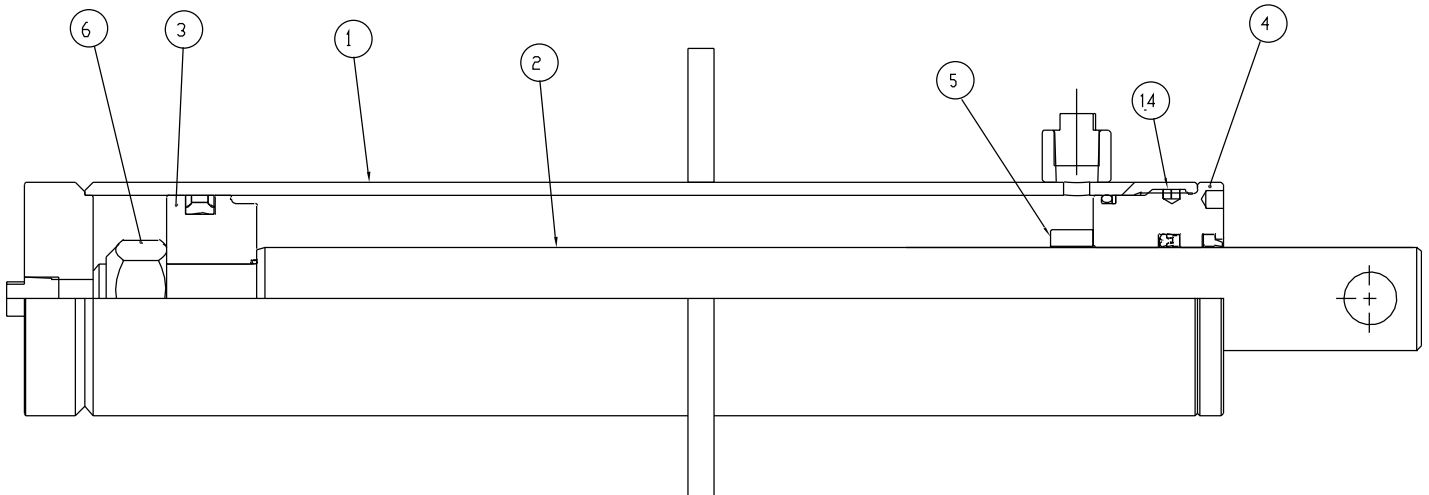


00050727 EXTENSION KIT, SCRAPER, MOLDBOARD

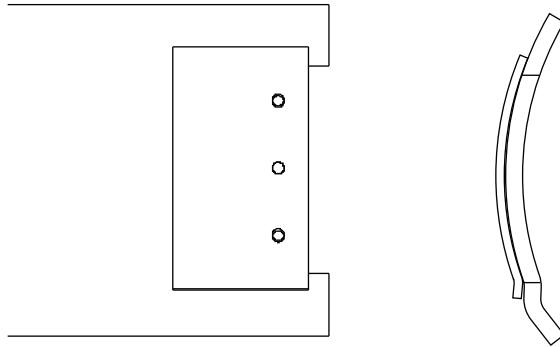
Item	Qty.	Part Number	Description
1	1	00124513	EXTENSION WELDMENT, 1FT, RH, SCRAPER
2	4	05014710	BOLT, .750-10 X 2.50 FSHCS
3	4	05021384	WASHER .750 LOCK HVY ZINC
4	4	05020271	NUT .750-10 G8 HEX ZINC
5	2	05014703	BOLT, .625-11 X 2.50 FSHCS
6	2	05021383	WASHER .625 LOCK HEAVY ZINC
7	2	05020270	NUT .625-11 G8 HEX ZINC

05002894 CYLINDER, 3.00 X 11.50, DA, NIT

ITEM	QTY.	PART NUMBER	DESCRIPTION
1	1	05003093	CASE WELDMENT
2	1	05002935	ROD
3	1	05002409	PISTON
4	1	05003094	HEAD
5	1	05002004	SPACER
6	1	05001001	LOCK NUT
9	2	05003095	PORT PLUG
14	2	05003096	THREAD LOCK
17	1	05002936	SEAL KIT



OPTIONS



00039631 MOLDBOARD END BIT ASSEMBLY, RH
00039632 MOLDBOARD END BIT ASSEMBLY, LH

ITEM	QTY	PART #	DESCRIPTION
1	1	00039633	Scraper, Moldboard Weldment, End Bit, RH
	1	00039634	Scraper, Moldboard Weldment, End Bit, LH
2	1	05051265	End Bit, Carbon, Pacal
3	3	05014549	Bolt, 5/8 - 11 x 2, G8, DH, Plain
4	3	05020270	Nut, 5/8 - 11, G8, Hex, Zinc
5	3	05021383	Washer, 5/8, Lock, Heavy, Zinc

00039621 CURB GUARD ASSEMBLY

ITEM	QTY	PART #	DESCRIPTION
1	1	05050000	Guard, 5/8 x 6
2	2	05014555	Bolt, 5/8 - 11 x 3 1/2, Dome Head Plain
3	2	05021383	Washer, 5/8, Lock, Zinc
4	2	05020284	Nut, 5/8 - 11, G8, Hex, Plain

05037005 CUSHION VALVE



Down pressure relief is required on all Monroe underbody scrapers. A 500PSI relief can be incorporated into the truck hydraulic system or a down pressure relief valve can be purchased with the underbody scraper. The relief valve must be installed to prevent premature failure of the actuating cylinders and/or the underbody scraper.

HOW TO ORDER PARTS

To order or inquire about replacement parts, please contact the **distributor** or **store** that the product was purchased through. To speed the information flow, please have the following information ready:

- Model Number
- Serial Number
- Part Number and/or description as per the parts manual
- Quantity needed

For further information about **Monroe Truck Equipment** replacement parts, please call 800-880-0109 and ask for **Snow & Ice Parts Sales**.

RETURN POLICY

Merchandise returned to **Monroe Truck Equipment** must have a Warranty Service Request (WSR) form filled out completely and signed by authorized personnel. To get your WSR form, call 800-880-0109. For whole goods ask for **Snow & Ice Sales**. For replacement parts, ask for **Snow & Ice Parts Sales**. All returned items are subject to a 15% restocking fee and must be sent freight prepaid!

MONROE TRUCK EQUIPMENT, INC. WARRANTY SNOW & ICE CONTROL PRODUCTS

Monroe Truck Equipment, Inc. warrants to the original purchaser, that if any part of the product proves to be defective in workmanship or material within **ONE YEAR** of the original installation, and is returned to us within 30 days of the discovered defect, we will (at our option) repair or replace the defective part. This warranty does not apply to damage resulting from misuse, neglect, accident, improper installation, normal wear items or lack of maintenance. This warranty is exclusive and supersedes all other warranties, whether expressed or implied. **Monroe Truck Equipment, Inc.** neither assumes, nor authorizes anyone to assume for it, any other obligation or liability in connection with this warranty and will not be liable for consequential damages.

All engines, pumps, motors, cylinders and valves are warranted by their manufacturer and not by **Monroe Truck Equipment, Inc.**. The manufacturer's warranty will apply to these parts. Electrical and hydraulic components are not to be disassembled without the express written permission of Monroe Truck Equipment. Use of replacement parts other than original equipment voids this warranty.

All defective parts returned must be accompanied by the model number, serial number, date installed, date of defect, description of defect, and the name of the distributor from whom it was purchased. All warranty claims must have prior written approval from **Monroe Truck Equipment, Inc.**

Please return the warranty registration card that accompanies this manual to confirm receipt of this parts catalog and acknowledge the information contained within. Failure to return the attached card may result in a voided warranty.



1051 West 7th Street
Monroe, WI 53566
608-328-8127 ~ Fax: 608-328-4278

Warranty Policy

Uninstalled Parts and Equipment Provided by Monroe Truck Equipment

Monroe Truck Equipment will provide the following limited warranty for a period of one year to the original purchaser of all uninstalled goods provided by Monroe Truck Equipment:

LIMITED WARRANTY: All goods provided by Monroe Truck Equipment (MTE) will be free from defects in material and workmanship for a period of one year from the date of purchase by the original purchaser. This limited warranty shall be the sole and exclusive remedy for any such product found to be defective. This limited warranty supercedes all previous warranties and is exclusive and in lieu of all other warranties, whether expressed or implied.

This limited warranty applies only to parts or accessories manufactured by MTE and/or provided by same. Except with respect to title, this limited warranty does not pertain to parts or accessories not manufactured and/or provided by MTE, regardless of whether such parts or accessories were selected and/or recommended by MTE. MTE will, as a service to the buyer, pass on any warranties received from the original manufacturer of MTE provided parts and/or accessories.

MTE will not under any circumstances be liable for any incidental or consequential damages whether in tort, contract, or otherwise, for any bodily injury, death, property damage, loss of use, or loss of income resulting from or in any way arising out of any goods provided by MTE, or their sale, use, or manufacture.

Any warranty claim deemed to be arising from the result of misuse, abuse, neglect, accident, improper installation, lack of maintenance, act of war (whether declared or otherwise), or act of God will be denied. Any repair or modification by the buyer or any third party, without the prior written consent of MTE, will void any possible warranty compensation. Any damage deemed to be the result of abnormal operation will not be compensated by this warranty.

Normal or special maintenance items such as fuels, fluids, tires, belts, hoses, filters, air cleaners, light bulbs, and any other items subject to normal wear and tear that are supplied in connection with goods provided by MTE are not allowed under this warranty.

All engines, pumps, cylinders, valves, and motors are warranted by their manufacturer and not by Monroe Truck Equipment. The manufacturer's warranty will apply to these parts. Electrical and hydraulic components are not to be disassembled without the express written consent of MTE. Any disassembly of MTE provided components without prior authorization will void the applicable warranty.

Monroe Truck Equipment shall be the sole and final determining authority as it applies to the administration of this warranty policy. Purchaser acknowledges receipt of Monroe Truck Equipment Warranty Policy and agrees to be bound by same.



GLOBAL SOLUTIONS
ARMORED VEHICLES ~ SPORT TRUCK CONVERSIONS
MUNICIPAL SNOW & ICE CONTROL ~ FIRE APPARATUS
PICKUP TRUCK ACCESSORIES ~ TRUCK EQUIPMENT/MODIFICATIONS





1051 West 7th Street
Monroe, WI 53566
608-328-8127 ~ Fax: 608-328-4278

Any and all warranty claims must be forwarded to MTE within 10 days of defect discovery. A copy of the original Monroe Truck Equipment invoice as well as the manufacturer's model number, serial number, and date of installation must accompany all correspondence regarding said claims. MTE will, at their option, choose whether to repair or replace the defective part unless otherwise specified by the original manufacturer of said part.

Procedures for Warranty Claims Notification

For submission of any warranty claim please contact Monroe Truck Equipment – Warranty Department at 800-356-8134

The following documentation will be needed when you call for initial warranty authorization:

1. A copy of the original MTE invoice.
2. Make, Model, and VIN or Serial Number of the equipment involved.
3. Part number and serial number of the part in question.
4. A complete description of the problem.

The following must accompany any claim submitted to Monroe Truck Equipment:

1. Documented photographs of any physical damage.
2. Inspection notes by MTE personnel or MTE authorized 3rd party.
3. Authorization number issued by Monroe Truck Equipment – Warranty Department.

Defective parts must be returned to Monroe Truck Equipment (freight prepaid) within 30 days of issuance of Authorization Number.

Monroe Truck Equipment reserves the right to void any warranty for failure to comply with Monroe Truck Equipment Warranty Policy.

This policy is effective October 11, 2012

