



One-Way Plow

MP311 & MP312

Maintenance and Parts Manual



Monroe Snow & Ice Division
1051 W. 7th Street
Monroe, WI 53566
Phone: 800-880-0109
email: snowandicecontrol@monroetruck.com

05051936-8
2/5/2016

TABLE OF CONTENTS

SAFETY INSTRUCTIONS	Page 2
MAINTENANCE INSTRUCTIONS	Page 3
TORQUE CHART	Page 3
GENERAL INFORMATION	Page 4
REPLACEMENT PARTS	Page 6-29
HOW TO ORDER PARTS	Page 31
RETURN POLICY	Page 31
WARRANTY INFORMATION	Page 33-35

SAFETY INSTRUCTIONS

- Read all installation, safety and maintenance instructions completely before operating this equipment
- Keep all personnel clear of moving parts while equipment is being operated.
- Do not operate equipment in need of maintenance! Repair immediately!
- While operating this equipment, use common sense, use caution, be alert and be safety-conscious.



! DANGER

AVOID HIGH-PRESSURE FLUIDS

Escaping fluid under pressure can penetrate the skin causing serious injury.

Avoid the hazard by relieving pressure before disconnecting hydraulic or other lines. Tighten all connections before applying pressure.

Search for leaks with a piece of cardboard. Protect hands and body from high pressure fluids.

If an accident occurs, see a doctor immediately. Any fluid injected into the skin must be surgically removed within a few hours or gangrene may result.



CAUTION: “Stacking” (piling) of snow with a push plow is not recommended.

Raising the plow too high while stacking can damage the plow and mount by causing the lift arm to fold up and contact the moldboard.

Do not lift the plow more than 18” off the ground with piling and stacking snow.

Where possible, start the snow season by pushing snow as far back as possible from the area being plowed to avoid having to move or stack it later.

MAINTENANCE INSTRUCTIONS

In Season:

- Check for loose bolts and nuts daily, and re-torque before use. (Failure to inspect equipment on a daily basis may seriously affect safety and/or efficiency.)
- Lubricate all grease fittings every ten hours of normal use and more frequently under heavy use.
- A cross over relief valve (1800 PSI) MUST be plumbed into the reversing circuit.
- Check all hydraulic fittings for tightness on a regular basis.
- System pressure should NOT exceed 2000 PSI.
- Check cutting edge for wear. Do not let cutting edge wear closer than ½" to ⅜" from the bottom angle of the moldboard.
- Due to the nature of use and environment this plow is operating in, damage and wear may occur at any time. Therefore, **Monroe Truck Equipment** recommends the end user establish and follow a daily inspection routine before using this plow.

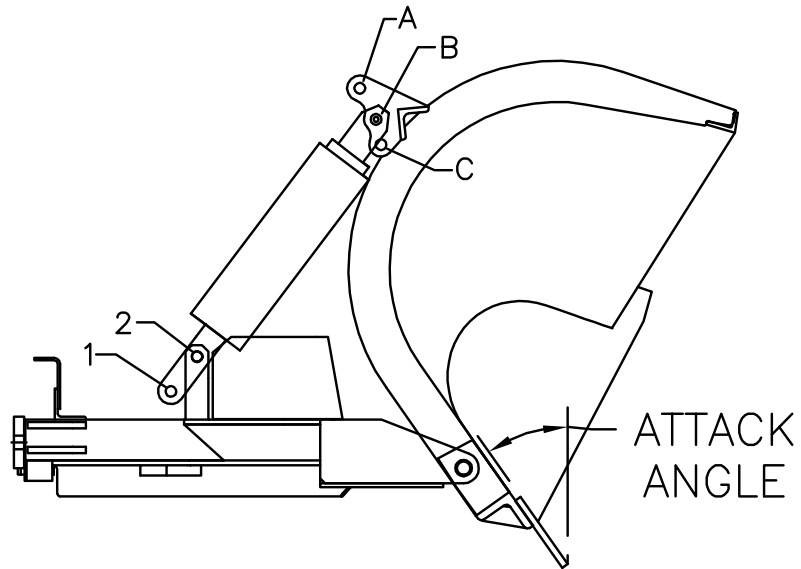
Off Season:

- Use care when disconnecting hydraulic lines to assure that no dirt or foreign objects enter the hydraulic system. Use caps to cover hydraulic hose fittings and insert plugs in hydraulic ports.
- Hydraulic cylinders should be fully retracted when stored during the off season to prevent damage or corrosion. The remaining exposed shaft surface should be coated with a thick grease to prevent corrosion, which must be removed before returning to regular service.
- Check mounting bolts for wear and/or damaged threads and replace before next season.

GENERAL INFORMATION

- Location descriptions are noted in direction of travel. (i.e. front, rear, left and right.)
- Delivery of replacement parts is subject to our sales delivery terms.
- Use only **Monroe Truck Equipment** O.E.M. replacement parts. Failure to do so will void warranty.
- Replacement parts listed in this manual reflect our most common plow items. If you do not find the part you require, please call your distributor.
- **Monroe Truck Equipment** reserves the right to make revisions or alterations to this parts manual.

ATTACK ANGLE

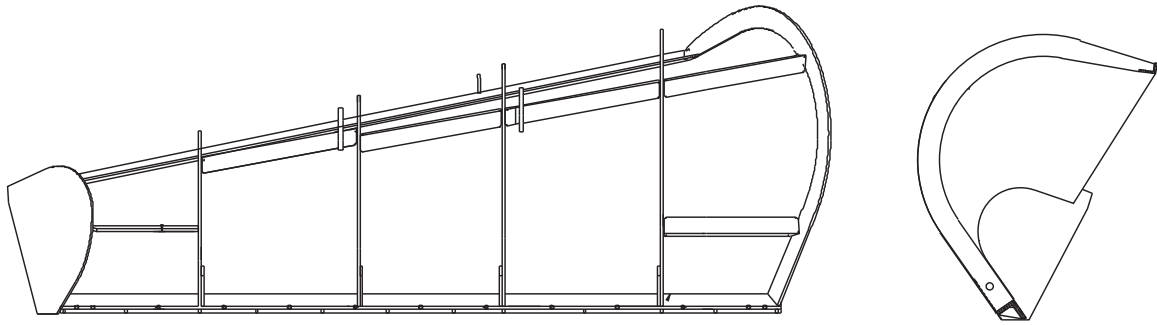


TO DETERMINE ATTACK ANGLE

MOLDBOARD PIN POSITION

	A	B	C
PUSHFRAME PIN POSITION	1 29 DEG	25 DEG	22 DEG
	2 38 DEG	35 DEG	32 DEG

FOR TOP MOUNTED CYLINDER
APPLICATION ONLY



* Shown MP311, 10 Gauge

MOLDBOARD WELDMENTS

Item	Qty.	Part Number	Description
1	1	00025586 00044317	MOLDBOARD WELDMENT, PLOW, MP311 MOLDBOARD WELDMENT, PLOW, MP312
2	1 1	00073182 00073186 00157340	MOLDBOARD WELDMENT, PLOW, MP311, 316 MOLDBOARD WELDMENT, PLOW, MP312, 316 MOLDBOARD WELDMENT, PLOW, MP312, 316
3		00151908	MOLDBOARD WELDMENT, PLOW, MP312, 10GA, HD TUBE, P-F

00049753 CUTTING EDGE, KIT, 5/8 X 8", 11'
00049754 CUTTING EDGE, KIT, 5/8 X 8", 12'

Item	Qty.	Part Number	Description
1	1	05031013 05031014	CUTTING EDGE, 5/8" X 8" 11', TPCS CUTTING EDGE, 5/8" X 8" 12', TPCS
2	13	05014551	BOLT, .625-11 X 2.50, G8, DH PLAIN
3	13	05021383	WASHER, .625, LOCK, HEAVY, ZINC
4	13	05020270	NUT, .625-11, G8, HEX, ZINC

00057621 CUTTING EDGE KIT, 11', .75 X 6, CARBIDE

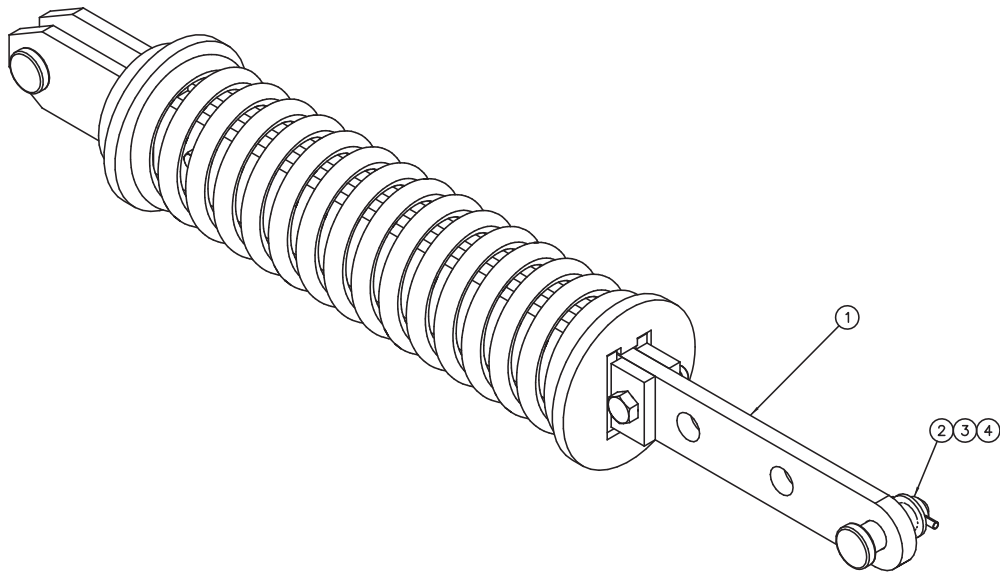
Item	Qty.	Part Number	Description
1	2	05031083	CUTTING EDGE, .75 X 6 X 4', 1020, CBD
2	1	05031082	CUTTING EDGE, .75 X 6 X 3', 1020, CBD
3	13	05014555	BOLT, .625-11 X 3.5, DH, PLAIN
4	13	05021383	WASHER, .625, LOCK, HEAVY, ZINC
5	13	05020270	NUT, .625-11, G8, HEX, ZINC
6	1	05031031	CUTTING EDGE, .5 X 6 X 11', 1084

00057622 CUTTING EDGE KIT, 12', .75 X 6, CARBIDE

Item	Qty.	Part Number	Description
1	2	05031083	CUTTING EDGE, .75 X 6 X 4', 1020, CBD
2	14	05014555	BOLT, .625-11 X 3.5, DH, PLAIN
3	18	05021383	WASHER, .625, LOCK, HEAVY, ZINC
4	18	05020270	NUT, .625-11, G8, HEX, ZINC
5	1	05031032	CUTTING EDGE, .5 X 6 X 12', 1084
6	4	05014553	BOLT, .625-11X3, DH PLAIN

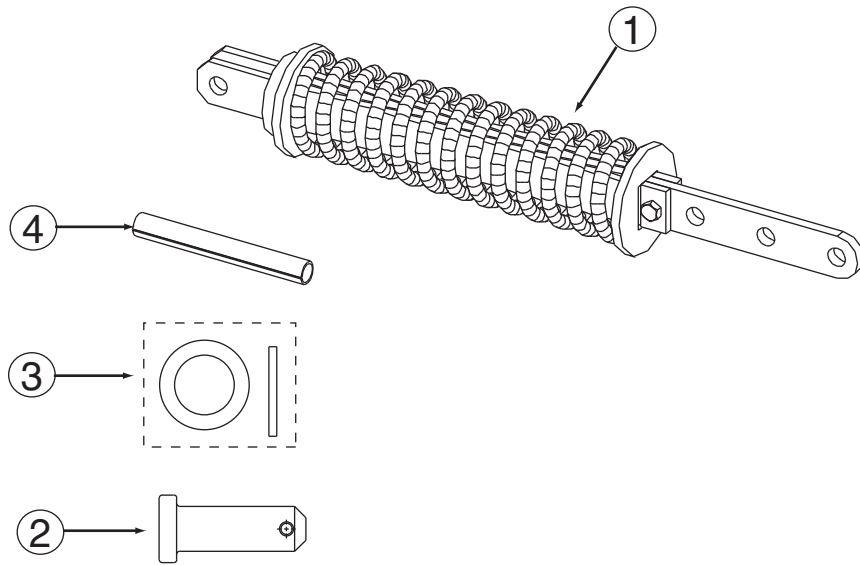
00055926 CUTTING EDGE KIT, 11', .5 X 10 RUBBER
00055927 CUTTING EDGE KIT, 12', .5 X 10 RUBBER

Item	Qty.	Part Number	Description
1	1	05031023 05031024	CUTTING EDGE, 11', 1.5 X 1, RUBBER, CP SLTD CUTTING EDGE, 12', 1.5 X 1 RUBBER
2	1	05031031 05031032	CUTTING EDGE, 11', .5 X 6, TPCS CUTTING EDGE, 12', .5 X 6, 1084
3	13 - 11' 14 - 12'	05014557	BOLT, .625-11 X 4, G8, DH PLAIN
4	13 - 11' 14 - 12'	05021383	WASHER, .625, LOCK, HEAVY, ZINC
5	13 - 11' 14 - 12'	05020270	NUT, .625-11, G8, HEX, ZINC



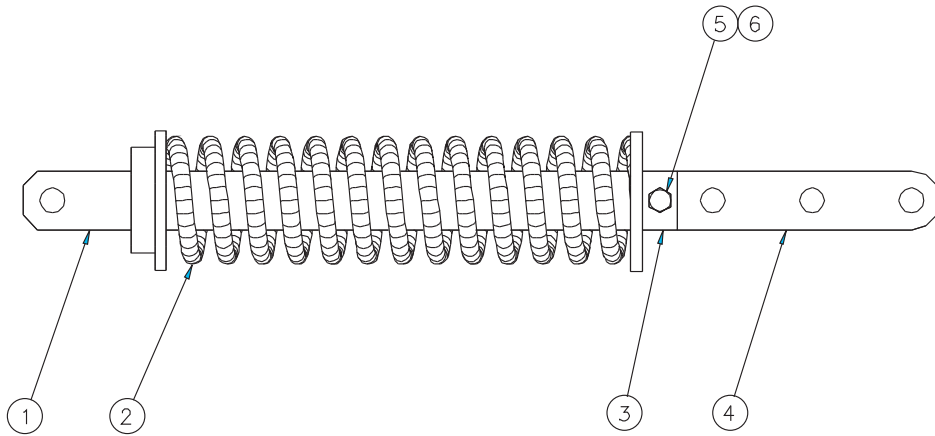
**00149868 TRIP KIT, PLOW, CT, MP311/312, HD SPR,
EXT BRACKET, SHEAR BOLT**

Item	Qty.	Part Number	Description
1	2	00149869	TRIP ASSEMBLY, CT, MP311/312
2	4	05022051	COMPRESSION TRIP PIN
3	4	05021202	BUSHING, 1.5 X 1 X 10GA, ZINC
4	4	05022026	PIN, .25 X 2 OA, ROLL



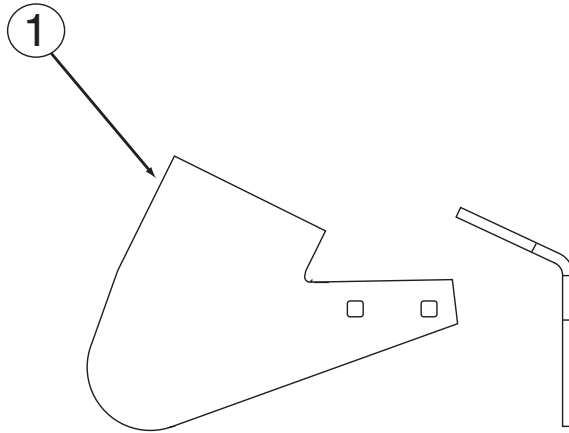
00059905 TRIP KIT, PLOW, CT FALLS, HD

Item	Qty.	Part Number	Description
1	2	00045823	SPRING, COMP SPRING, EXT BRACKET
2	4	05022051	PIN, 1 DIA X 3.25, FLAT, HD
3	4	05021202	BUSHING, 1.50 X 1 X 10GA, ZINC
4	4	05022026	PIN, .25 X 2, ROLL, ZINC



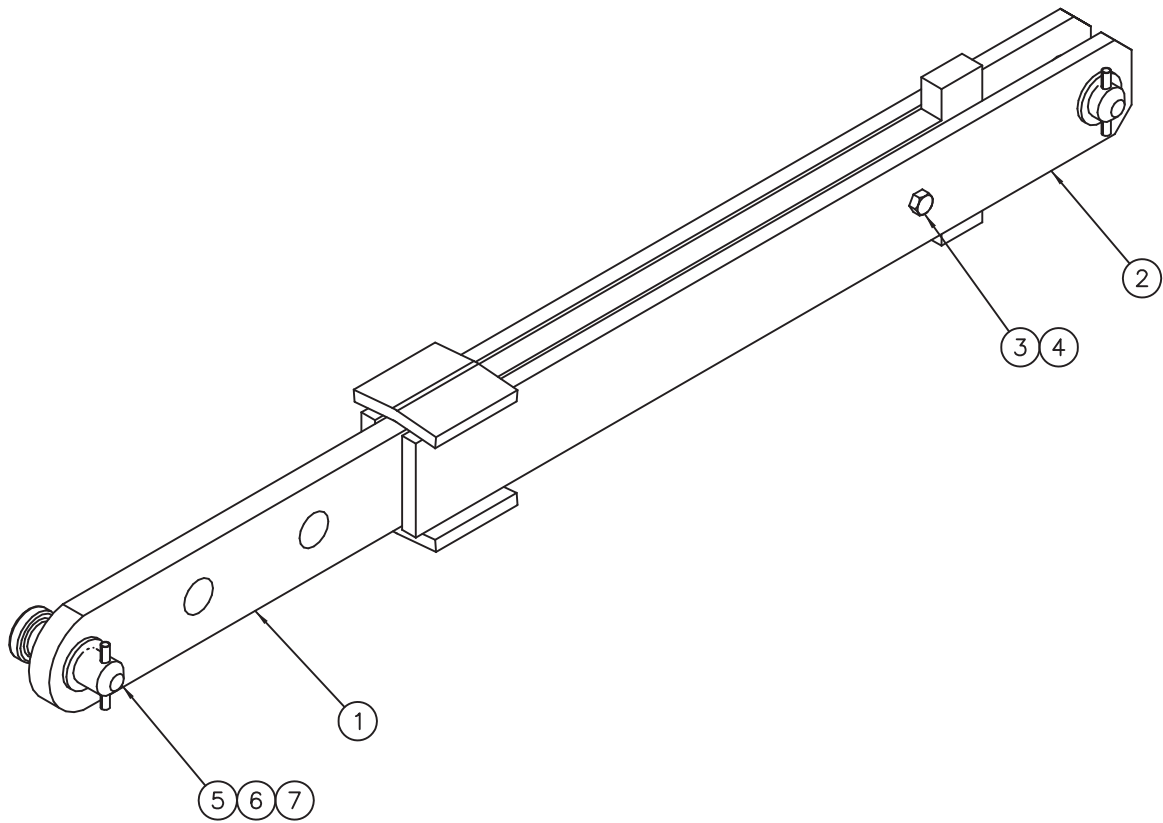
00045823 TRIP ASSEMBLY, PLOW, MP311/312, HD

Item	Qty.	Part Number	Description
1	1	00040165	TRIP ARM WELDMENT, PLOW, CT, OUTER
2	1	05035037	SPRING COMP, TRIP, 5.313 OD
3	2	00040167	RETAINER
4	1	00045824	TRIP ARM WELDMENT, PLOW, CT, INNER
5	1	05010741	BOLT, .625-11 X 2.50, G8, HHCS, ZINC
6	1	05020837	NUT, .625-11, GC, TOP LOCK, C&W



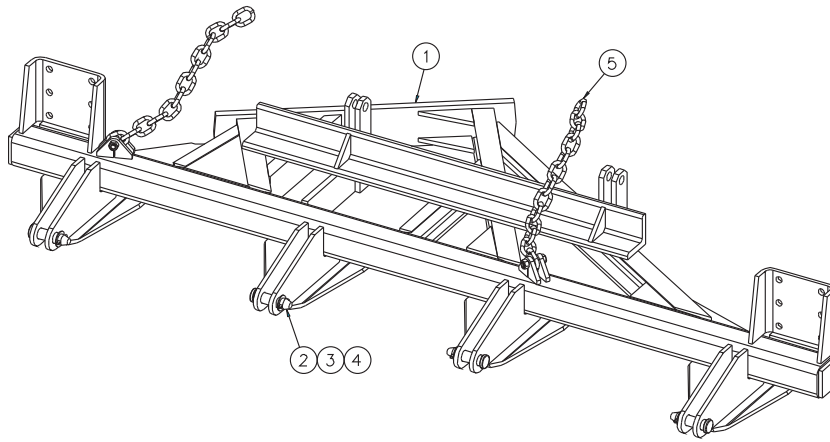
00059906 NOSE GUARD KIT, MP311/312, 8" CE
00101839 NOSE GUARD KIT, MP311/312, 6" CE

Item	Qty.	Part Number	Description
1	1	00037981 00068098	NOSE GUARD, MP311/312, 8" CE NOSE GUARD, MP311/312, 6" CE
2	2	05014549	BOLT, .625-11 X 2, G8, DH, PLAIN
3	2	05020270	NUT, .625-11, G8, HEX, ZINC
4	2	05021383	WASHER, .625 LOCK HEAVY, ZINC



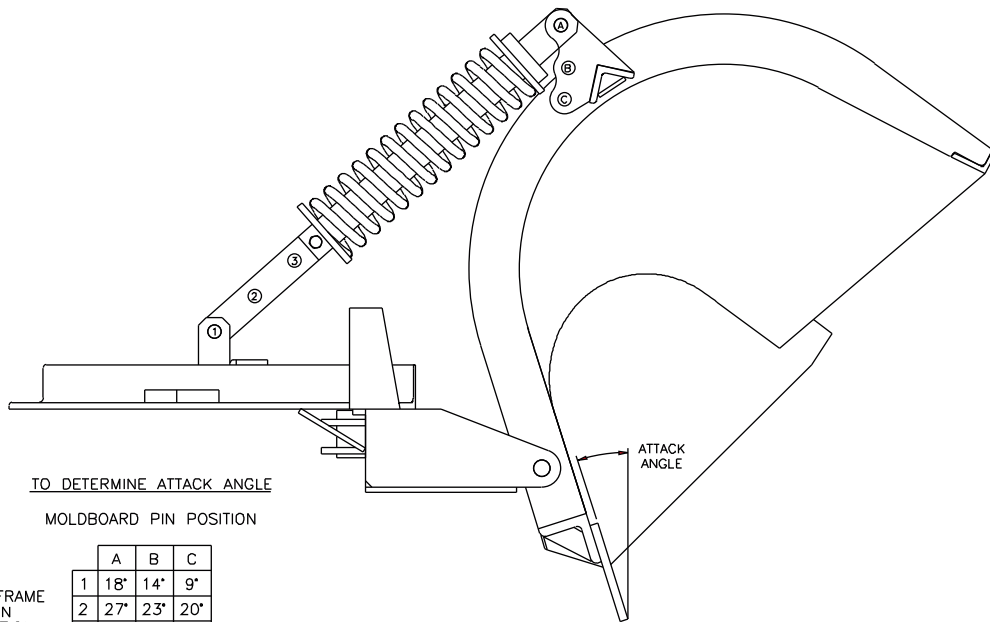
00051237 TRIP KIT, PLOW, MP311/312, SHEAR BOLT

Item	Qty.	Part Number	Description
1	2	00051238	TRIP ARM, PLOW, MP311/312, INNER
2	2	00066014	OUTER ARM WELDMENT, TRIP, SHEAR BAR
3	2	05020266	NUT, .375-16, G8, HEX, ZINC
4	2	05010355	BOLT, .375-16 X 3.5, G5, HHCS, ZINC
5	4	05022051	PIN, 1 DIA X 3.25 FLAT, HD
6	4	05021202	BUSHING, 1.50 X 1 X 10GA, ZINC
7	4	05022026	PIN, .25 X 2 ROLL, ZINC

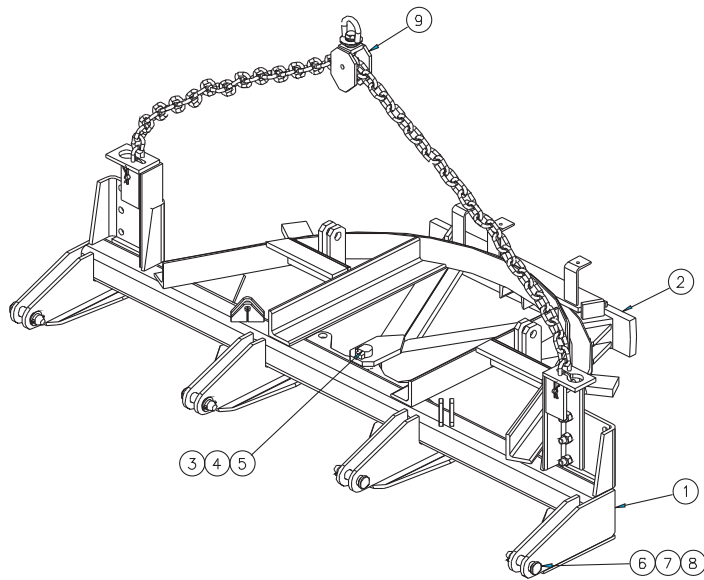


00073176 PUSHFRAME KIT, FA, CT, 11 & 12'

Item	Qty.	Part Number	Description
1	1	00036930	PUSHFRAME WELDMENT, FA, CT, 11' & 12', 4 ATCH PTS
2	4	05022067	PIN, 1.25 DIA X 4.5 OA, FLAT, HD
3	4	05022039	PIN, .313 X 2, ROLL
4	4	05021191	BUSHING 1.88 X 1.25 X 14GA, ZINC
5	1	00055943	LIFT KIT, 2 CHAIN <i>See Page 15</i>

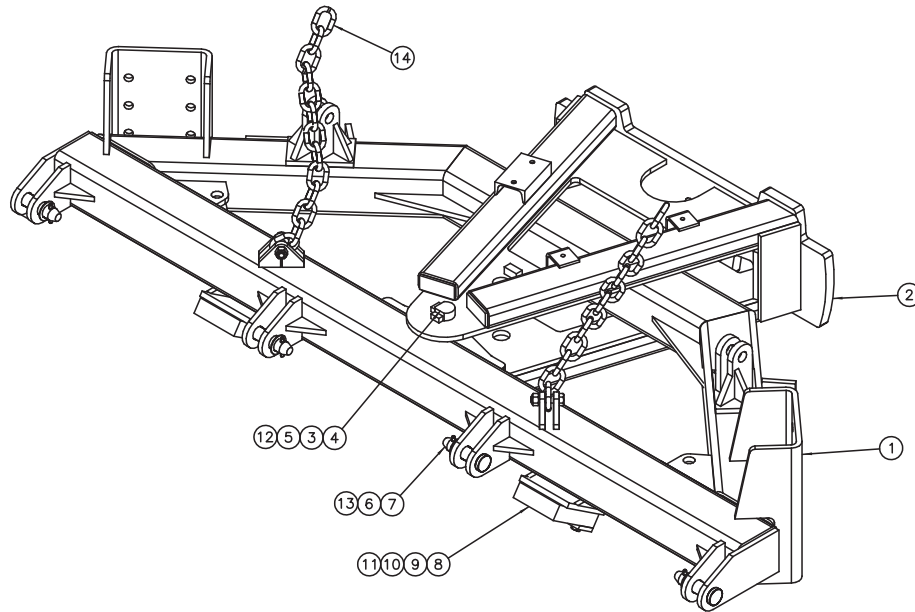


End of spring may have to be trimmed to get most back position.



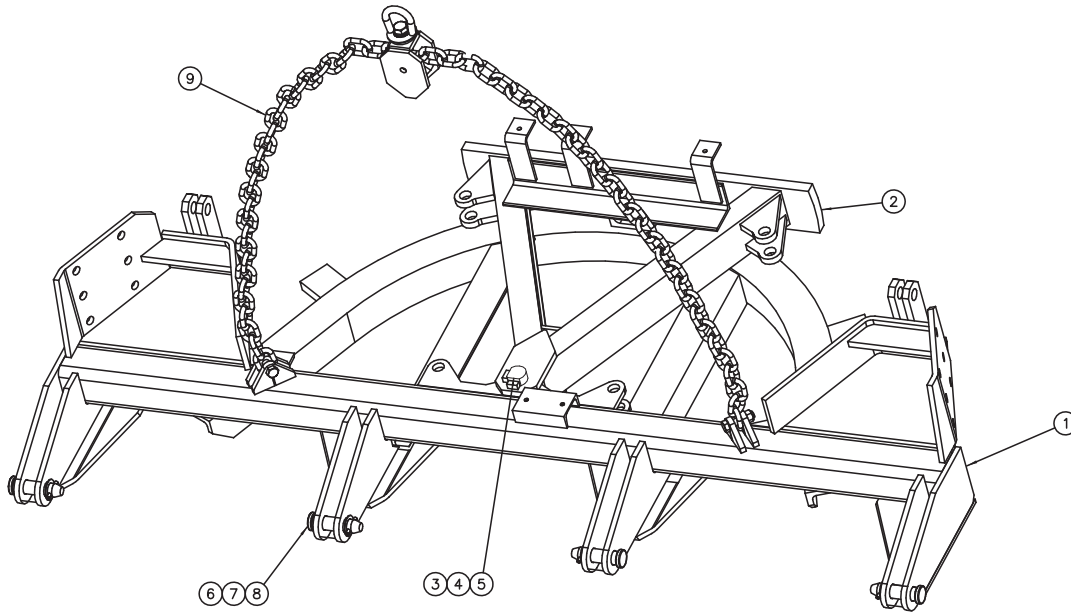
00059907 PUSHFRAME KIT, RVS, 11' & 12', 4 ATCH PTS

Item	Qty.	Part Number	Description
1	1	00027833	PUSHFRAME WELDMENT, REV, 11' & 12', 4 ATCH PTS
2	1	00027881	STD A-FRAME WELDMENT
3	1	05022047	PIN, 1.250 X 7.25, FLAT, HD
4	1	05022044	PIN, .313 X 3 ROLL
5	1	05021316	WASHER, .25 G5, FLAT, ZINC
6	4	05022067	PIN FLAT HD, 1.25 DIA X 4.50
7	4	05022039	PIN, 313 X 2 ROLL
8	4	05021191	BUSHING, 1.25 MACHINE ZINC
9	1	00031154	CONT CHAIN LIFT KIT, SWVL LOOP <i>See Page 15</i>



00151909 PUSHFRAME KIT, RVS, CT, 10'-12', 4 ATCH HD 5" TUBE

Item	Qty.	Part Number	Description
1	1	00112361	PUSHFRAME WLDMT,RVS,CT,10'-12'
2	1	00110863	A-FRAME WLDMT,HD,TUBE STYLE
3	2	00110868	BUSHING 2.250 ODx1.313 IDx.688
4	1	00066021	PIN 1.25 x 8.250 FLAT HD
5	1	05021316	WASHER 1.25 FLAT ZC
6	4	05021191	BUSHING,MACH,1.88x1.25x14GA,ZC
7	4	05022067	PIN 1.242 4.835 FLAT HD ZC
8	2	05051480	BUMPER,PLOW,1.5x5.0x6.0
9	2	00020722	BUMPER RETAINER
10	4	05010697	BOLT .500-13 x 3.00 G8 HHCS ZC
11	4	05020847	NUT .500-13 GC TOPLOCK C&W
12	1	05022044	PIN .313 x 3.000 ROLL
13	4	05022039	PIN, ROLL .313 x 2.000 OA
14	1	00055943	LIFT KIT,2 CHAIN <i>See Page 15</i>



00157338 PUSHFRAME KIT, RVS, CT, 10'-12'

ITEM	QTY	PART NUMBER	DESCRIPTION
1	1	00157339	PUSHFRAME WLDMT,RVS,CT,10'-12'
2	1	00097486	A-FRAME WLDMT,STD,TOP MTD CYL
3	1	05022047	PIN 1.25 x 6.438 FLAT HD ZC
4	1	05022044	PIN .313 x 3.000 ROLL
5	1	05021316	WASHER 1.25 FLAT ZC
6	4	05022067	PIN 1.242 x 3.370GL x 4.835,ZC
7	4	05022039	PIN, ROLL .313 x 2.000 OA
8	4	05021191	BUSHING,MACH,1.88x1.25x14GA,ZC
9	1	00015591	LIFT KIT,PLOW,CONT CHAIN, <i>See Page 16</i>

0005943 LIFT KIT, 2 CHAIN, NON LEVEL LIFT

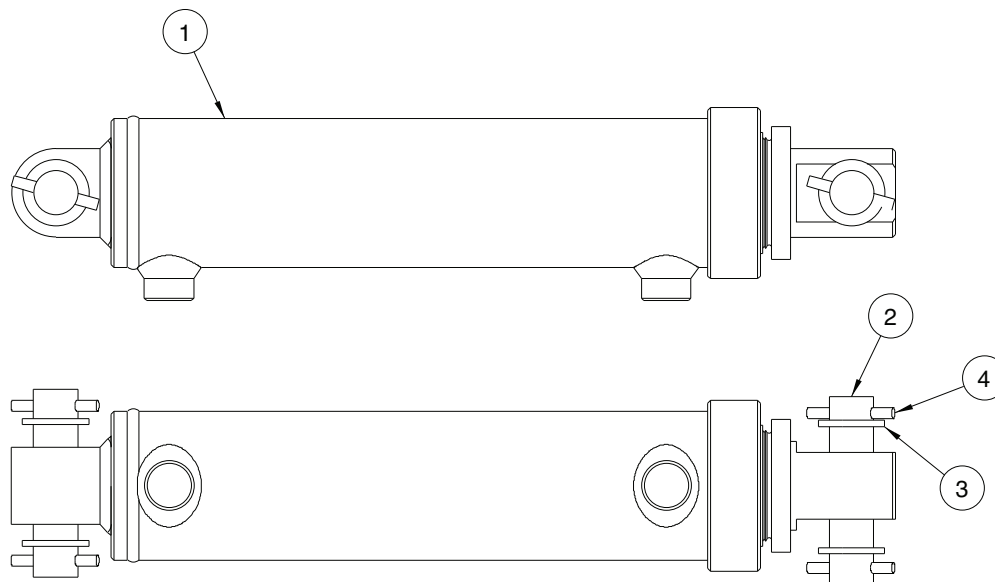
Item	Qty.	Part Number	Description
1	2	00027691	CHAIN, .5 X 60, PROOF COIL
2	2	05010741	BOLT, .625-11 X 2.5, G8, HHCS, ZINC
3	2	05020837	NUT, .625-11, GC, TOP LOCK, C&W

00031154 LIFT KIT, 1 CHAIN, SWVL LOOP

Item	Qty.	Part Number	Description
1	1	00043173	SWIVEL LOOP, CHAIN
2	1	00036995	BRACKET WELDMENT, LH, CHAIN ATACH
3	1	00036996	BRACKET WELDMENT, RH, CHAIN ATACH
4	1	00043175	CHAIN, .5 X 120
5	3	05022136	PIN, .5 X 4.50, 4" GRIP BENT
6	6	05010765	BOLT, .750-10 X 2.250, G8, HHCS, ZINC
7	6	05020271	NUT, .750-10, G8, HEX, ZINC
8	1	05022040	PIN, 1 X 4.25 NO HEAD
9	2	05021202	BUSHING, 1.50 X 1 X 10GA, ZINC
10	1	05022002	PIN, #8, HAIR
11	1	05022026	PIN, .250 X 2, ROLL, ZINC

00015591 LIFT KIT, PLOW, CON CHAIN SWIVEL LOOP

Item	Qty.	Part Number	Description
1	1	00043173	SWIVEL LOOP, CHAIN LEVEL LIFT
2	1	05022136	PIN, .5 X 4.5 4" GRIP BENT
3	1	00043175	CHAIN HIGH TEST, .5 X 120
4	2	05010741	BOLT, .625-11 X 2.50, G8, HHCS, ZINC
5	2	05020837	NUT, .625-11, GC, TOP LOCK, C&W
6	1	05022040	PIN, 1 X 4.25 NO HEAD
7	2	05022106	PIN, .188 LYNCH

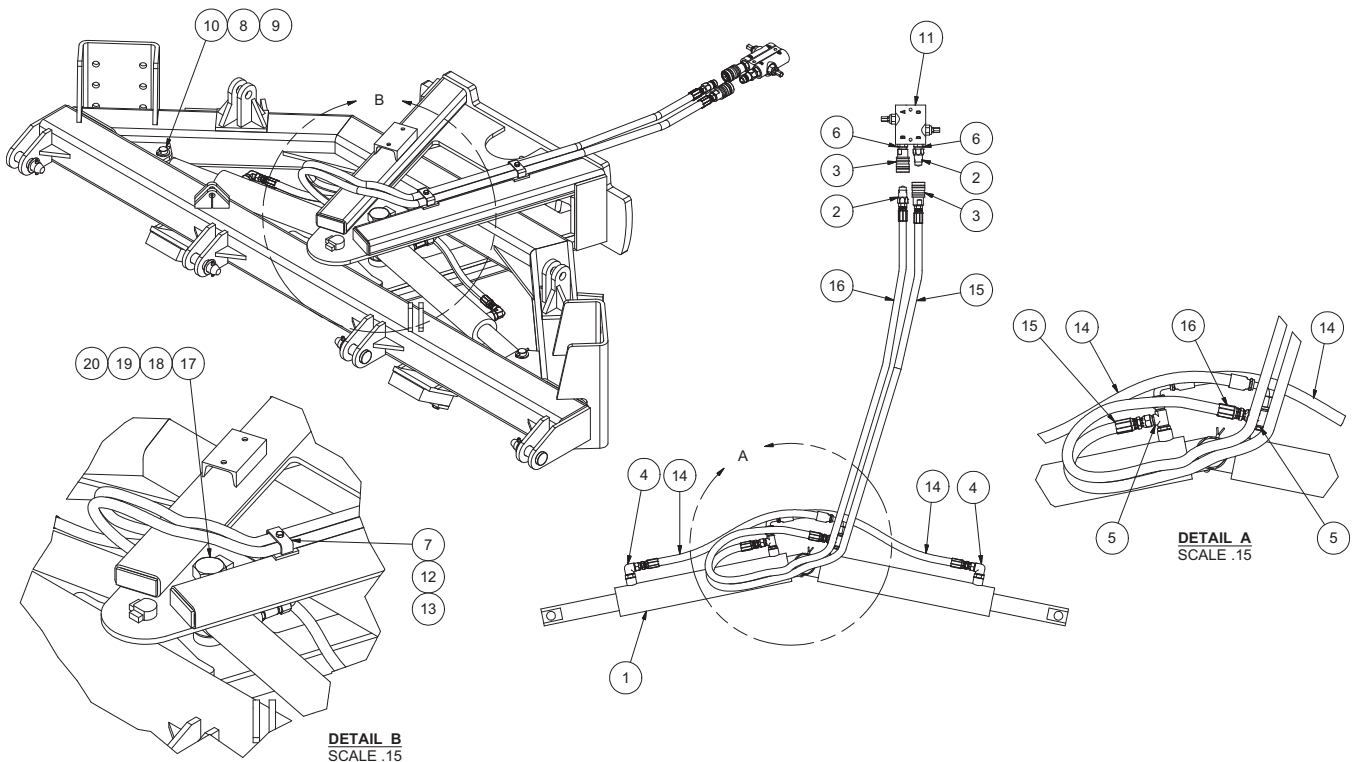


00050926 REVERSING KIT, PLOW, 3X10, CYL

Item	Qty.	Part Number	Description
1	2	05000000	CYLINDER, 3X10 DA, LIFT PA, ORB PORTS <i>See Page 27</i>
2	4	05022040	PIN, 1 X 4.250 NO HEAD
3	8	05021202	BUSHING, 1.50 X 1 X 10GA, ZINC, NARROW
4	8	05022026	PIN, .250 X 2 ROLL, ZINC
5	1	05043067	HOSE KIT, CUSHION BLOCK, .875 ORB
6	1	05037080	HOSE ASSEMBLY, PLOW, MTE W/ R608
7	3	00055000	CLIP HOSE HOLD DOWN, REVERSIBLE PLOW, MTE
8	3	05010620	BOLT, .313-18 X 1.50, G8, HHCS, ZINC
9	3	05020909	NUT, .313-18, GC, TOP LOCK, C&W
10	6	05050608	CABLE, TIE, HD, 14"L X .3"W, BLACK-

00107581 REVERSING KIT, PLOW, 4 X 10 CYL

Item	Qty.	Part Number	Description
1	2	05002953	CYLINDER, 4X10, DA, NITRIDED
2	4	05022040	PIN, 1 X 4.250 NO HEAD
3	8	05021202	BUSHING, 1.50 X 1 X 10GA, ZINC, NARROW
4	8	05022026	PIN, .250 X 2 ROLL, ZINC
5	1	05044230	HOSE KIT, CUSHION BLOCK
6	1	05037080	HOSE ASSEMBLY, PLOW, MTE W/ R608
7	3	00055000	CLIP HOSE HOLD DOWN, REVERSIBLE PLOW, MTE
8	3	05010620	BOLT, .313-18 X 1.50, G8, HHCS, ZINC
9	3	05020909	NUT, .313-18, GC, TOP LOCK, C&W
10	6	05050608	CABLE, TIE, HD, 14"L X .3"W, BLACK-

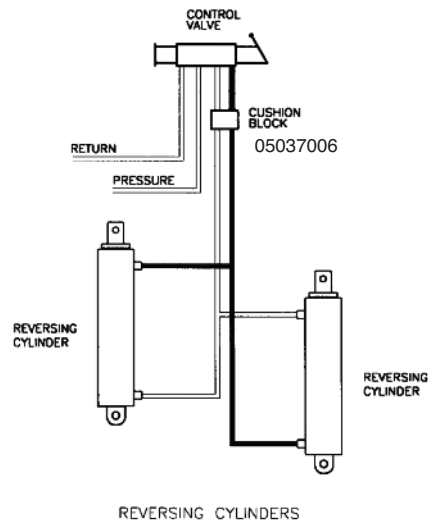


00110870 REVERSING KIT, PLOW, 3 X 15 CYL, NIT, HD 5" PUSHFRAME

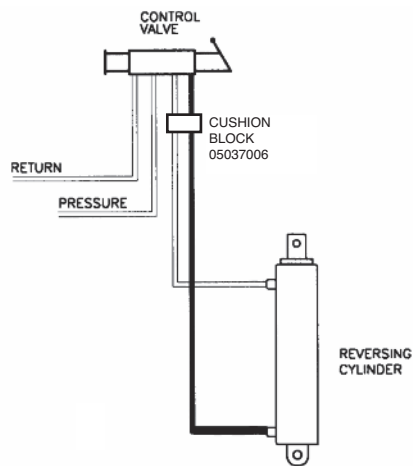
Item	Qty.	Part Number	Description	
1	2	00121641	CYLINDER,3x15,DA,FOR UPA-FULL	<i>See Page 29</i>
2	2	05037297	FITTING,COUPLING,HYD,.5"MNPT	
3	2	05037298	FITTING,COUPLING,HYD,.5"FNPT	
4	2	6801-8-10	HYD FITNG,ADAPTER 90	
5	2	6804-8-10-8	HYD FITNG,TEE	
6	2	6401-10-8	HYD FITTING,7/8 ORB x 1/2	
7	2	00055000	CLIP,HOSE HOLD DOWN,REVERSIBLE	
8	4	05022026	PIN .250 x 2.000 OA,ROLL	
9	4	05021202	BUSHING 1.50x1.00x10GA ZC	
10	2	05022040	PIN 1.000 x 4.250 NO HEAD	
11	1	05043066	VALVE,CUSHION,.875-14ORB,30GPM	
12	2	05010620	BOLT .313-18 x 1.50 G8 HHCS ZC	
13	2	05020909	NUT .313-18 GC TOPLOCK C&W	
14	2	05044067	HOSE ASSY,.5"ID,26"OAL,2WIRE	
15	1	05044068	HOSE ASSY,.5"ID,91"OAL,2WIRE,	
16	1	05044069	HOSE ASSY,.5"ID,99"OAL,2WIRE,	
17	1	00121642	BOLT MOD,1.50-6x8.00,.250 HOLE	
18	1	05020401	NUT 1.50-6 G2 SLHEX ZC	
19	1	05022005	PIN .250 x 3.000 COTTER	
20	2	00110867	BUSHING 2.500 ODx1.563 IDx.812	

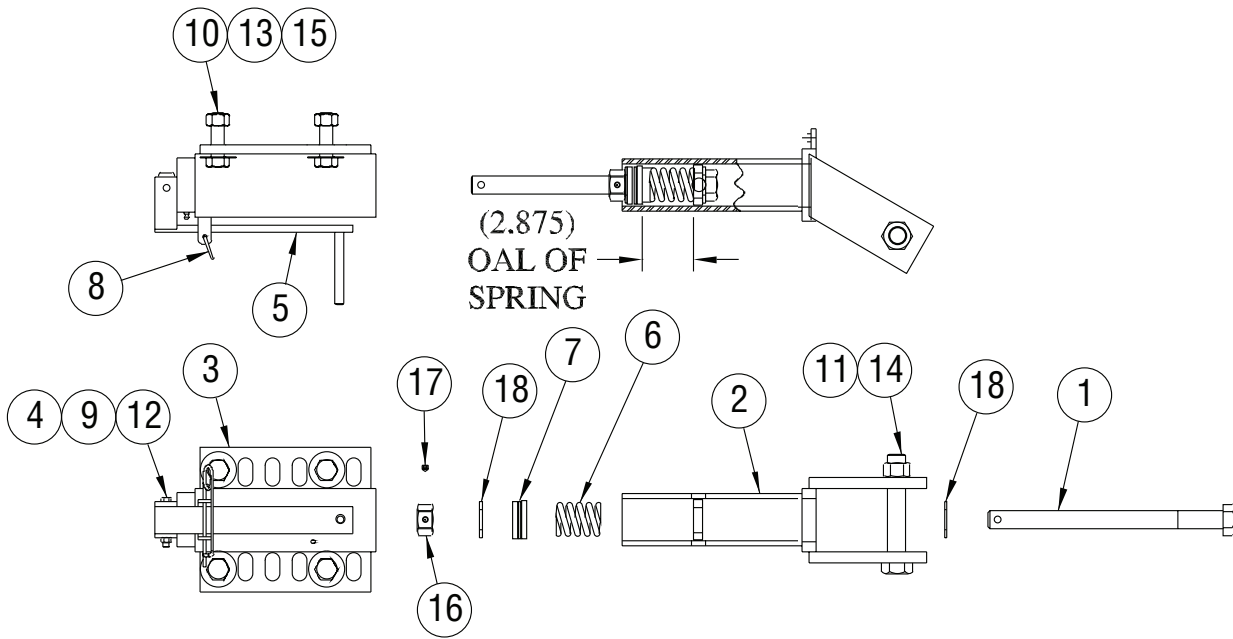
HYDRAULIC DIAGRAMS

Hydraulic Diagram for the Reversing Cylinders



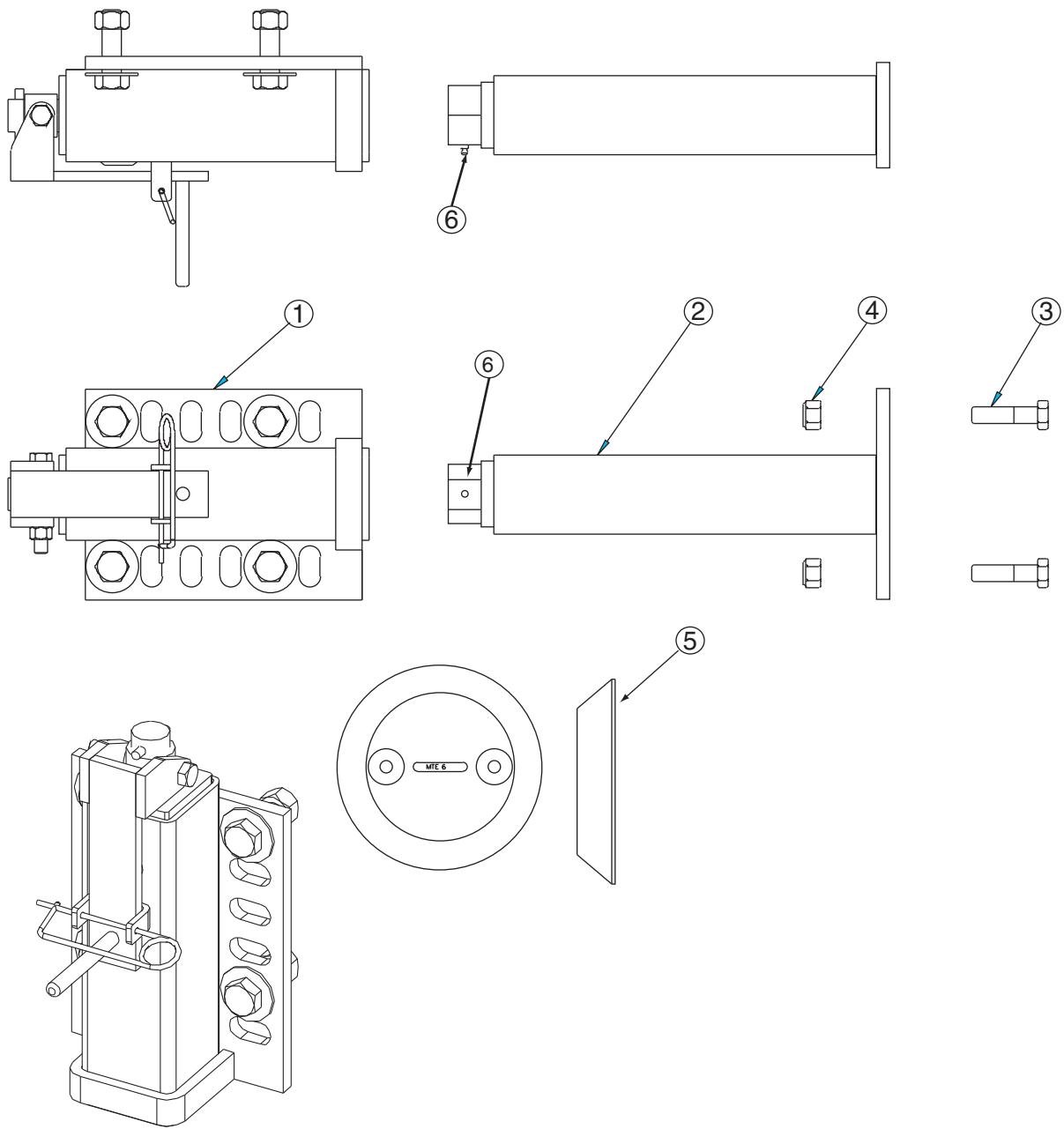
Single Reversing Cylinder





00051200 JACK ASSEMBLY, SCREW, ROUND

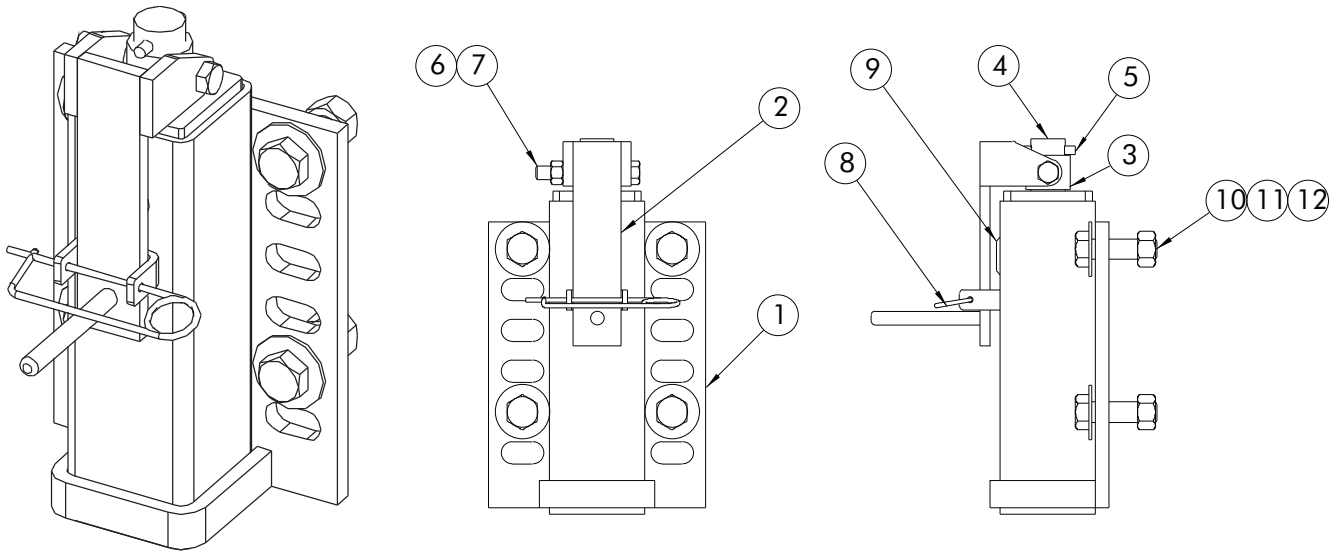
Item	Qty.	Part Number	Description
1	1	00051204	ADJUSTMENT SCREW
2	1	00051202	INNER TUBE WELDMENT
3	1	00051201	OUTER TUBE WELDMENT
4	1	00010000	NUT, ADJUSTMENT SCREW
5	1	00051203	ADJUSTMENT HANDLE WELDMENT
6	1	05035000	SPRING, COMPRESSION
7	1	05030000	BEARING THRUST
8	1	05022074	PIN, SAFETY, .120 DIA X 4.375 LG
9	1	05010624	BOLT, .3125-18 X 2.5, G8, HHCS, ZINC
10	4	05010766	BOLT, .75-10 X 2.5, G8, HHCS, ZINC
11	1	05010822	BOLT, 1-8 X 6, G8, HHCS, ZINC
12	1	05020909	NUT, .3125 -18, GC, TOP LOCK, C&W
13	4	05020849	NUT, .75-10, GC, TOP LOCK, C&W
14	1	05020834	NUT, 1-8, GC, TOP LOCK, C&W
15	8	05021063	WASHER, .75, STRUCTURAL, FLAT, ZINC
16	1	00121661	NUT, RETAINER, ADJ, SCREW
17	1	05017137	SCREW, .313-18 X .375", SSS, CP, ZC
18	2	05021020	WASHER, 1" FLAT, MIL-CARB, SAE ZC



MUSHROOM SHOES PARTS LIST

Item	Qty.	Part Number	Description
1	1	00041967	JACK ASSEMBLY, OUTER TUBE, SQUARE
2	1	00051036	ASSEMBLY, INNER TUBE
3	2	05010741	BOLT, .625 - 11" X 2.5" G8, ZINC
4	2	05020837	NUT, .625-11, GC, TOP LOCK, C&W
5	2	05051009 05050120	SHOE, MUSHROOM, TAPERED, 11.5 X 8 SHOE, MUSHROOM, 10.25" CARBIDE
6	1	05050288	GREASE ZERK, .25" -28" STRAIGHT

Items 1-4 are included in the Jack Assembly, Mushroom Shoe Jack and can be ordered using the part number 00051035.

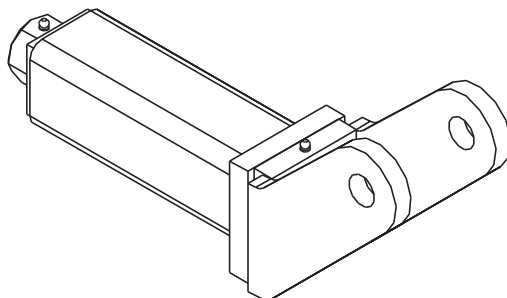


JACK ASSEMBLY, OUTER TUBE SQUARE

Item	Qty.	Part Number	Description
1	1	00051027	ASSEMBLY, OUTER TUBE
2	1	00051020	ASSEMBLY, HANDLE CRANK
3	1	00051022	PIPE, COLLAR, CRANK
4	1	00051021	ASSEMBLY, ROD, ACME THREADED, CRANK
5	1	05022039	PIN, ROLL, .3125 X 2
6	1	05010699	BOLT, .5-13 X 3.5, G8, HHCS, ZINC
7	1	05020847	NUT, GC, TOP LOCK, C&W
8	1	05022074	PIN SAFETY, .120 DIA X 4.375, LG
9	1	05050023	CAP GREASE, PLASTIC, 1.3125 DIA
10	4	05010766	BOLT, .75-10 X 2.5, G8, HHCS, ZINC
11	8	05021063	WASHER, .75 FLAT, STRUCTURAL, ZINC
12	4	05020849	NUT, .75-10, GC, TOP LOCK, C&W

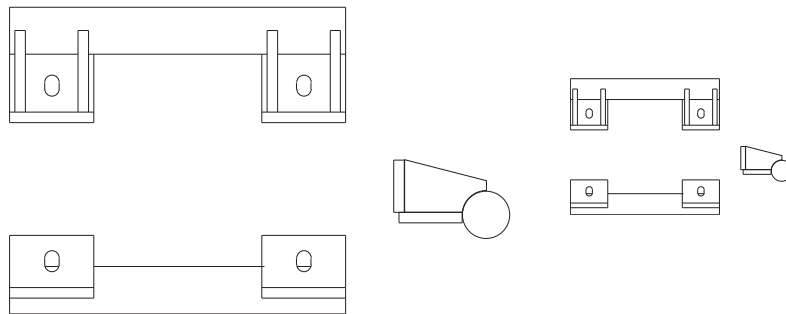
Items 1-12 can be ordered as an assembly: Jack Assembly, Outer Tube, Square 00041967.

00058146 INNER TUBE WELDMENT, CASTER/SKID OLD STYLE SQUARE



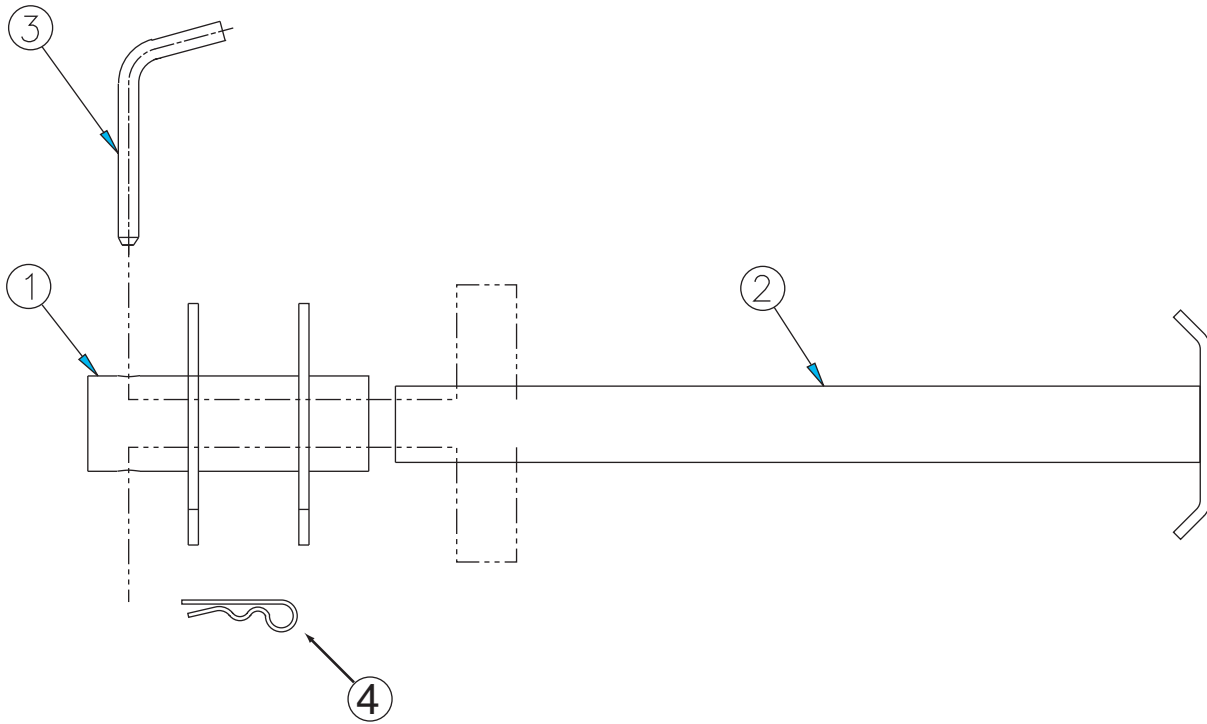
SHOE KIT, SKID MOLDBOARD

Item	Qty.	Part Number	Description
1	2	05050221 05050220 05051036 05051037	SHOE, MOLDBOARD, CAST, 8", 10 DEG SHOE, MOLDBOARD, CAST, 5" & 6", 10 DEG SHOE, MOLDBOARD, CASTING, 5", 30 DEG SHOE, MOLDBOARD, CASTING, 8", 35 DEG
2	4	05014560	BOLT, .625 -11 X 5, G8, DH PLN
3	4	05021383	WASHER, .625, LOCK, HEAVY, ZINC
4	4	05020270	NUT, .625-11, G8, HEX, ZINC



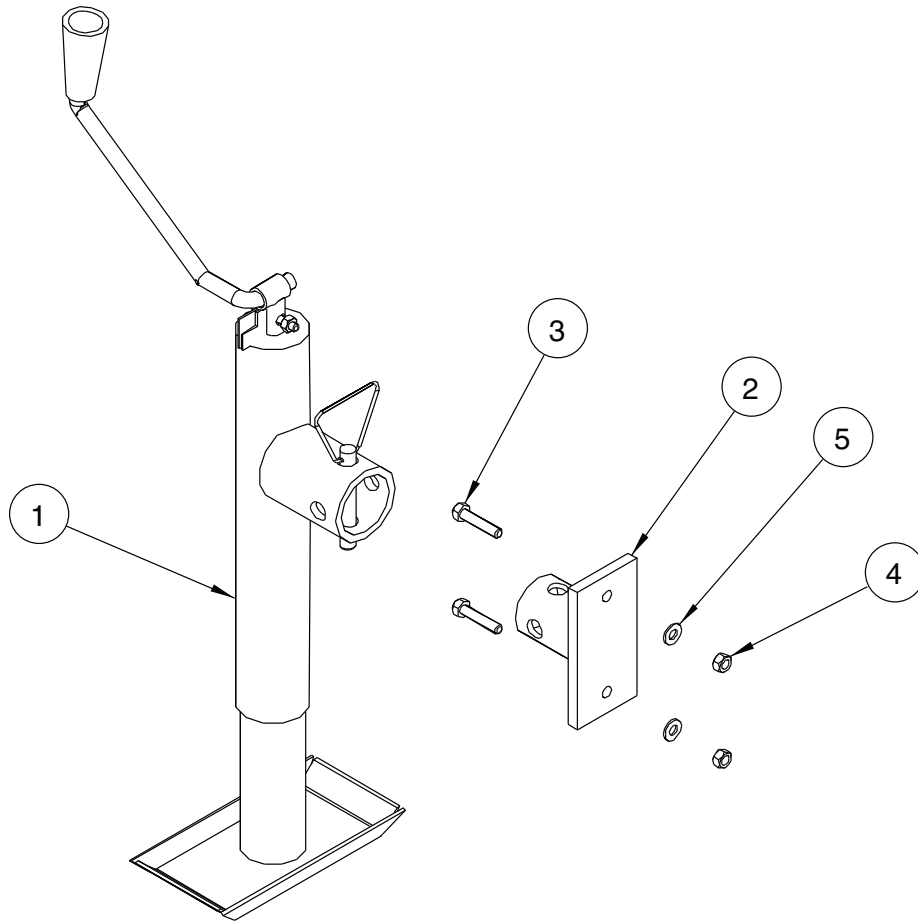
00059115 SHOE KIT, SKI, PLOW, MOLDBOARD

Item	Qty.	Part Number	Description
1	2	00010271	SHOE ASSEMBLY, MOLDBOARD
2	4	05014553	BOLT, .625-11 X 3, G8, DH, PLAIN
3	4	05010739	BOLT, .625-11 X 2, G8, HHCS, ZINC
4	8	05021383	WASHER, .625, LOCK, ZINC
5	8	05020270	NUT, .625-11, G8, HEX, ZINC



00010264 JACK KIT, PARKING JACK, A-FRAME PARKING JACK

Item	Qty.	Part Number	Description
1	1	00010265	TUBE JACK WELDMENT, OUTER PARKING
2	1	00010267	INNER TUBE ASSEMBLY
3	1	05022136	PIN, .5 X 4.5" 4" GRIP BENT, ZINC
4	1	05022035	PIN, #11, HAIR, ZINC



00061212 JACK KIT, PARKING, TOP WIND, TUBE MOUNT, REMOVABLE

Item	Qty.	Part Number	Description
1	1	05050227	JACK ASSEMBLY, TOP WIND, TUBE MOUNT
2	2	00084491	MOUNT WELDMENT, JACK, PLOW, TOP WIND
3	4	05010645	BOLT, .375-16 X 1.50, G8, HHCS, ZINC
4	4	05020898	NUT, .375-16, GC, TOP LOCK, C&W
5	4	05021307	WASHER, .375, FLAT, ZINC

00039621 CURB GUARD KIT, WRAP AROUND

Item	Qty.	Part Number	Description
1	1	05050000	GUARD, CURB, .625 X 6
2	2	05014555	BOLT, .625-11 X 3.5, DH PLAIN

00073985 DEFLECTOR KIT, RUBBER, MP311
00073986 DEFLECTOR KIT, RUBBER, MP312

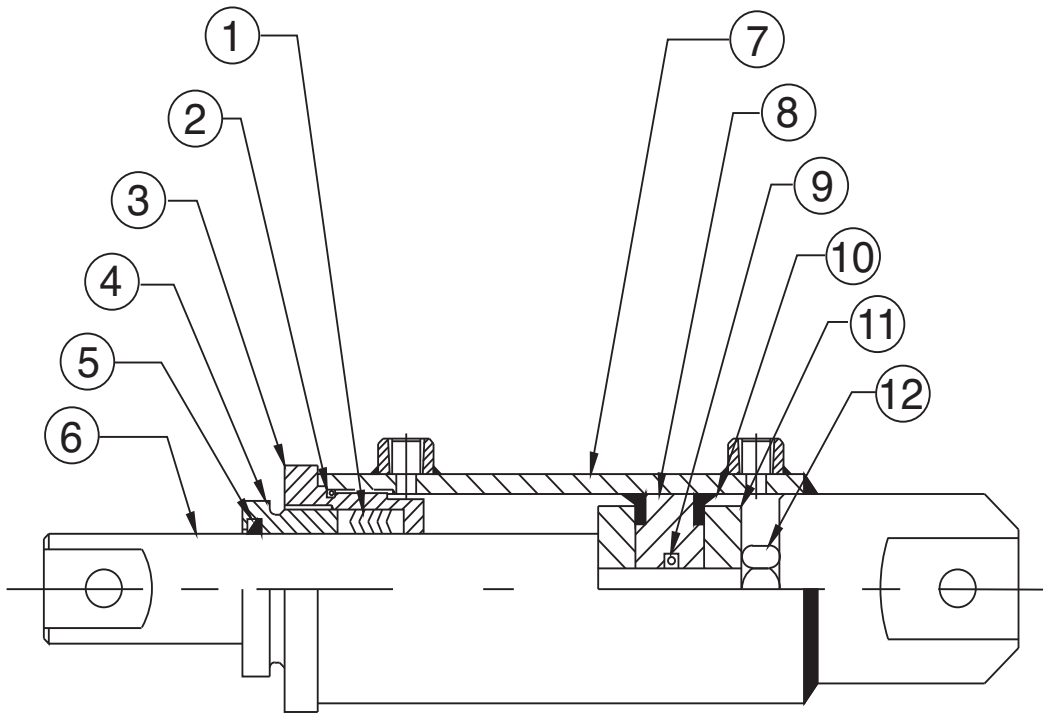
Item	Qty.	Part Number	Description
1	11' - 10.6 FT 12' - 11.5 FT	05051426	BELTING, RUBBER, 12" WIDE
2	1	00073987 00057851	STRIP, 11' STRIP 12'
3	11 FT -13 12FT - 15	05010620	BOLT, .3125 - 18 X 1.5, G8, HHCS, ZINC
4	11 FT -13 12FT - 15	05020606	NUT, .3125 - 18, G2, SPIN LOCK, ZINC

MARKERS

Item	Qty.	Part Number	Description
1	(PAIR)	05051432 05051181	MARKERS, 36" FLUORESCENT ORANGE FLEXIBLE MARKER MARKERS, CABLE, 42" L, STRAIGHT, YELLOW W/ RED DAY GLO TIP

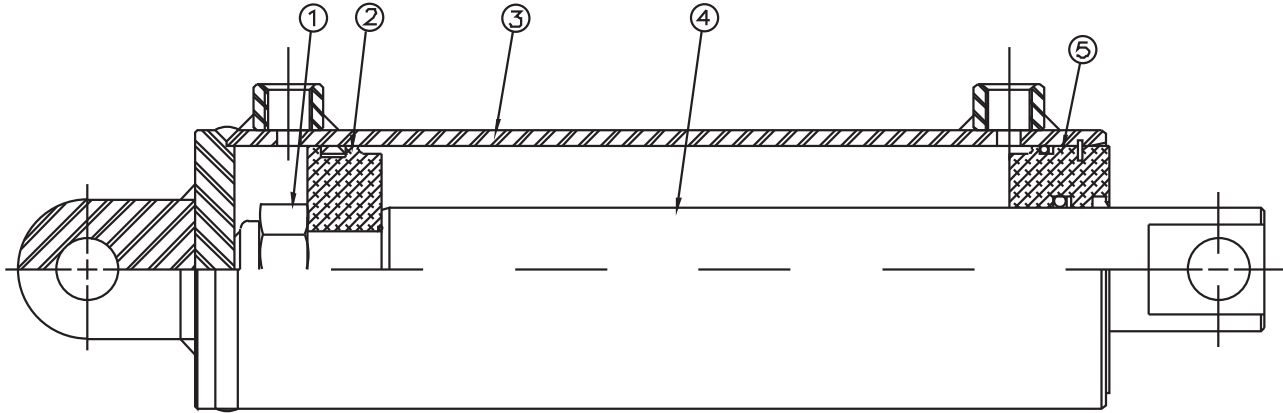
05000000 CYLINDER, 3 X 10, DA, NITRIDED ROD & POLY PAK

BEST METAL	ITEM	QTY	PART #	DESCRIPTION
	1	1	05000001	PACKING SET
	2	1	05000002	O-RING
	3	1	05000006	BOX
	4	1	05000007	NUT
	5	1	05000003	WIPER
	6	1	05000008	ROD
	7	1	05000014	TUBE
	8	1	05000010	PISTON
	9	1	05000004	O-RING
	10	2	05000005	CUP
	11	2	05000011	FOLLOWER
	12	1	05000012	NUT
	13	1	05000013	SEAL KIT



05000020 CYLINDER, 4 X10 DA

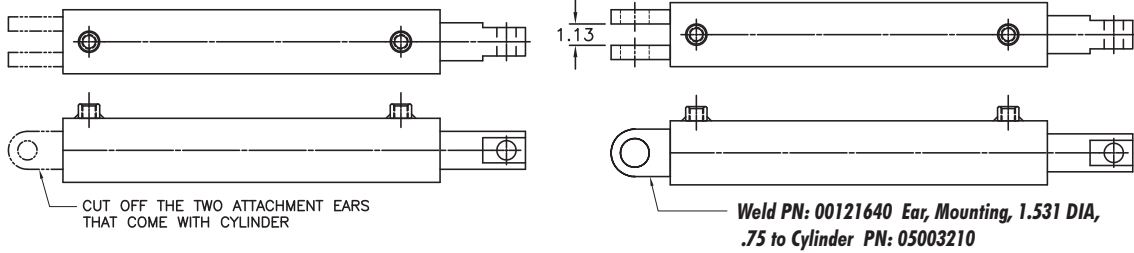
ITEM	QTY	PART NUMBER	DESCRIPTION
1	1	05000022	LOCK NUT, 1-1/4"
2	1	05000023	PISTON
3	1	05000024	CASE
4	1	05000025	ROD
5	1	05000026	HEAD
	1	05000021	SEAL KIT



00121641 CYLINDER, 3x15, DA, for UPA Full

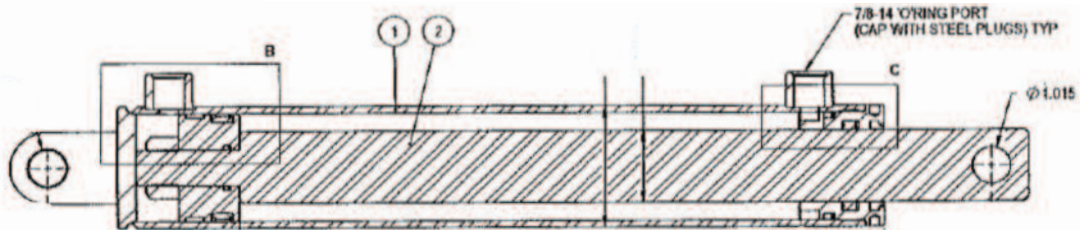
STFP #1

STEP #2

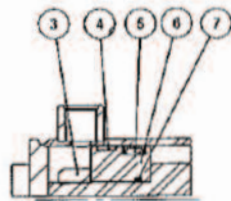


BEST METAL

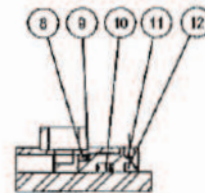
ITEM	QTY	PART #	DESCRIPTION
1	1	N/A	JACKET ASSEMBLY
2	1	N/A	ROD ASSEMBLY
3	1	N/A	TOP LOCK NUT
4	1	*	WEAR RING
5	1	*	DYNAMIC SEAL, CAPPED T-SEAL
6	1	05003356	PISTON, WEAR RING, CAPPED T-SEAL
7	1	*	STATIC SEAL, O-RING
8	1	*	STATIC SEAL, O-RING
9	1	*	STATIC SEAL, BACKUP RING
10	1	*	DYNAMIC SEAL, POLYPAK
11	1	05003355	GLAND NUT
12	1	*	ROD WIPER
		05003225	SEAL KIT (Includes all parts marked with an *)



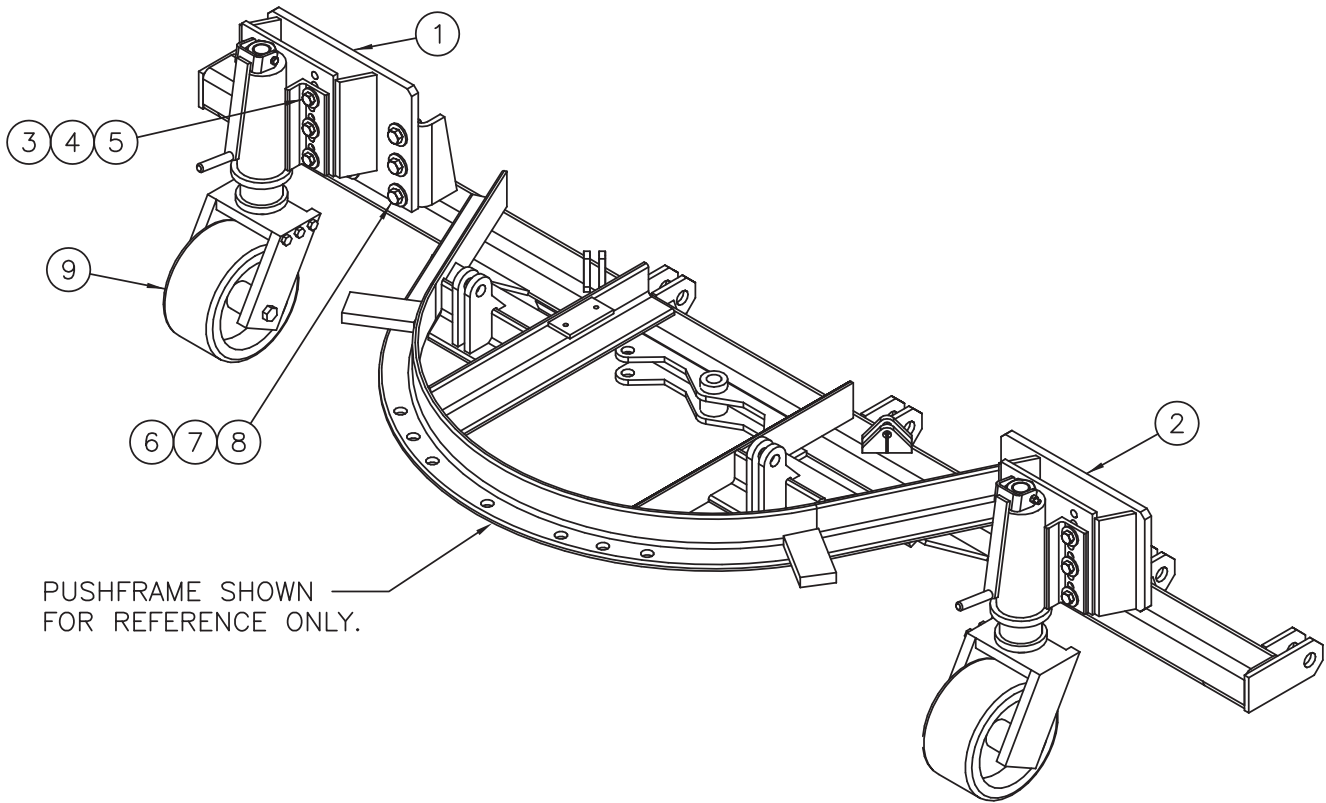
SECTION A-A



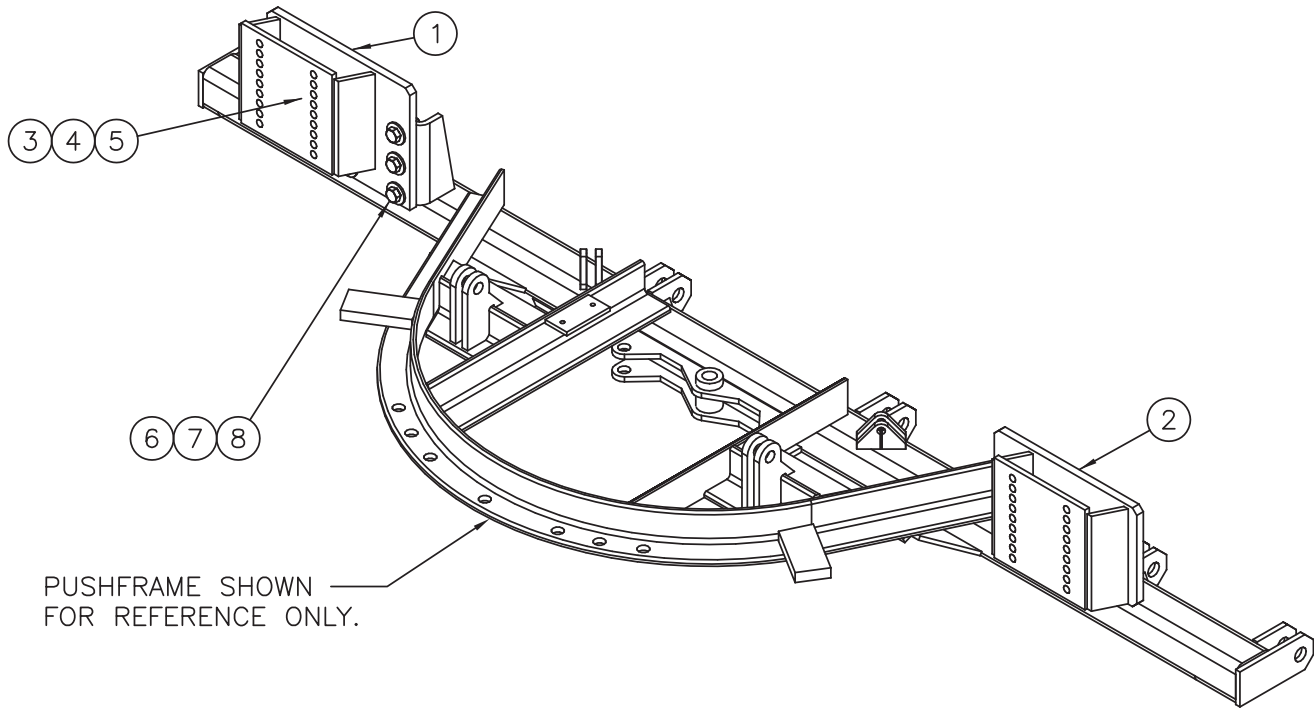
DETAIL B



DETAIL C



00149801 SNOW WHEEL KIT, RVS,4, 5, 6 ATCH 10'-12', W/ SNOW WHEEL			
ITEM	QTY	PART NUMBER	DESCRIPTION
1	1	00148093	EXT PL WLDMT,LH,SNOW WHEEL,
2	1	00148094	EXT PL WLDMT,RH,SNOW WHEEL,
3	12	05010739	BOLT .625-11 x 2.00 G8 HHCS ZC
4	12	05020837	NUT .625-11 GC TOPLOCK C&W
5	24	05021311	WASHER .625 FLAT ZC
6	12	05010766	BOLT .750-10 x 2.50 G8 HHCS ZC
7	12	05020849	NUT .750-10 GC TOPLOCK C&W
8	24	05021312	WASHER .750 FLAT ZC
9	2	05050762	WHEEL,SWIVEL W/ADJUSTER,6509



00148092 SNOW WHEEL KIT, RVS, 4, 5, 6 ATCH, 10'-12', W/O SNOW WHEELS

ITEM	QTY	PART NUMBER	DESCRIPTION
1	1	00148093	EXT PL WLDMT,LH,SNOW WHEEL,
2	1	00148094	EXT PL WLDMT,RH,SNOW WHEEL,
3	12	05010739	BOLT .625-11 x 2.00 G8 HHCS ZC
4	12	05020837	NUT .625-11 GC TOPLOCK C&W
5	24	05021311	WASHER .625 FLAT ZC
6	12	05010766	BOLT .750-10 x 2.50 G8 HHCS ZC
7	12	05020849	NUT .750-10 GC TOPLOCK C&W
8	24	05021312	WASHER .750 FLAT ZC

HOW TO ORDER PARTS

To order or inquire about replacement parts, please contact the **distributor** or **store** that the product was purchased through. To speed the information flow, please have the following information ready:

- Model Number
- Serial Number
- Part Number and/or description as per the parts manual
- Quantity needed

For further information about **Monroe Truck Equipment** replacement parts, please call your local distributor.

RETURN POLICY

Merchandise returned to **Monroe Truck Equipment** must have a Returned Goods Authorization (RGA) form filled out completely and signed by authorized personnel. To get your RGA form, call 800-880-0109. For whole goods, ask for **Snow & Ice Sales**. For replacement parts, ask for **Snow & Ice Parts Sales**. All returned items are subject to a 15% restocking fee and must be sent freight prepaid!

MONROE TRUCK EQUIPMENT, INC. WARRANTY SNOW & ICE CONTROL PRODUCTS

Monroe Truck Equipment, Inc. warrants to the original purchaser, that if any part of the product proves to be defective in workmanship or material within **ONE YEAR** of the original installation, and is returned to us within 30 days of the discovered defect, we will (at our option) repair or replace the defective part. This warranty does not apply to damage resulting from misuse, neglect, accident, improper installation, normal wear items or lack of maintenance. This warranty is exclusive and supersedes all other warranties, whether expressed or implied. **Monroe Truck Equipment, Inc.** neither assumes, nor authorizes anyone to assume for it, any other obligation or liability in connection with this warranty and will not be liable for consequential damages.

All engines, pumps, motors, cylinders and valves are warranted by their manufacturer and not by **Monroe Truck Equipment, Inc.**. The manufacturer's warranty will apply to these parts. Electrical and hydraulic components are not to be disassembled without the express written permission of Monroe Truck Equipment. Use of replacement parts other than original equipment voids this warranty.

All defective parts returned must be accompanied by the model number, serial number, date installed, date of defect, description of defect, and the name of the distributor from whom it was purchased. All warranty claims must have prior written approval from **Monroe Truck Equipment, Inc.**

Please return the warranty registration card that accompanies this manual to confirm receipt of this parts catalog and acknowledge the information contained within. Failure to return the attached card may result in a voided warranty.



**1051 West 7th Street
 Monroe, WI 53566
 608-328-8127 ~ Fax: 608-328-4278**

**Warranty Policy
 Uninstalled Parts and Equipment Provided by Monroe Truck Equipment**

Monroe Truck Equipment will provide the following limited warranty for a period of one year to the original purchaser of all uninstalled goods provided by Monroe Truck Equipment:

LIMITED WARRANTY: All goods provided by Monroe Truck Equipment (MTE) will be free from defects in material and workmanship for a period of one year from the date of purchase by the original purchaser. This limited warranty shall be the sole and exclusive remedy for any such product found to be defective. This limited warranty supercedes all previous warranties and is exclusive and in lieu of all other warranties, whether expressed or implied.

This limited warranty applies only to parts or accessories manufactured by MTE and/or provided by same. Except with respect to title, this limited warranty does not pertain to parts or accessories not manufactured and/or provided by MTE, regardless of whether such parts or accessories were selected and/or recommended by MTE. MTE will, as a service to the buyer, pass on any warranties received from the original manufacturer of MTE provided parts and/or accessories.

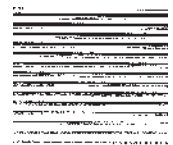
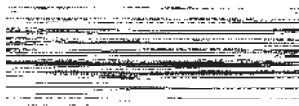
MTE will not under any circumstances be liable for any incidental or consequential damages whether in tort, contract, or otherwise, for any bodily injury, death, property damage, loss of use, or loss of income resulting from or in any way arising out of any goods provided by MTE, or their sale, use, or manufacture.

Any warranty claim deemed to be arising from the result of misuse, abuse, neglect, accident, improper installation, lack of maintenance, act of war (whether declared or otherwise), or act of God will be denied. Any repair or modification by the buyer or any third party, without the prior written consent of MTE, will void any possible warranty compensation. Any damage deemed to be the result of abnormal operation will not be compensated by this warranty.

Normal or special maintenance items such as fuels, fluids, tires, belts, hoses, filters, air cleaners, light bulbs, and any other items subject to normal wear and tear that are supplied in connection with goods provided by MTE are not allowed under this warranty.

All engines, pumps, cylinders, valves, and motors are warranted by their manufacturer and not by Monroe Truck Equipment. The manufacturer's warranty will apply to these parts. Electrical and hydraulic components are not to be disassembled without the express written consent of MTE. Any disassembly of MTE provided components without prior authorization will void the applicable warranty.

Monroe Truck Equipment shall be the sole and final determining authority as it applies to the administration of this warranty policy. Purchaser acknowledges receipt of Monroe Truck Equipment Warranty Policy and agrees to be bound by same.



GLOBAL SOLUTIONS
 ARMORED VEHICLES ~ SPORT TRUCK CONVERSIONS
 MUNICIPAL SNOW & ICE CONTROL ~ FIRE APPARATUS
 PICKUP TRUCK ACCESSORIES ~ TRUCK EQUIPMENT/MODIFICATIONS



**1051 West 7th Street
Monroe, WI 53566
608-328-8127 ~ Fax: 608-328-4278**

Any and all warranty claims must be forwarded to MTE within 10 days of defect discovery. A copy of the original Monroe Truck Equipment invoice as well as the manufacturer's model number, serial number, and date of installation must accompany all correspondence regarding said claims. MTE will, at their option, choose whether to repair or replace the defective part unless otherwise specified by the original manufacturer of said part.

Procedures for Warranty Claims Notification

For submission of any warranty claim please contact Monroe Truck Equipment – Warranty Department at 800-356-8134

The following documentation will be needed when you call for initial warranty authorization:

1. A copy of the original MTE invoice.
2. Make, Model, and VIN or Serial Number of the equipment involved.
3. Part number and serial number of the part in question.
4. A complete description of the problem.

The following must accompany any claim submitted to Monroe Truck Equipment:

1. Documented photographs of any physical damage.
2. Inspection notes by MTE personnel or MTE authorized 3rd party.
3. Authorization number issued by Monroe Truck Equipment – Warranty Department.

Defective parts must be returned to Monroe Truck Equipment (freight prepaid) within 30 days of issuance of Authorization Number.

Monroe Truck Equipment reserves the right to void any warranty for failure to comply with Monroe Truck Equipment Warranty Policy.

This policy is effective October 11, 2012

