



Parts & Service Manual for PARA-GLIDE, JR WING



Monroe Snow & Ice Control
1051 W. 7th Street • Monroe, WI 53566
USA: 877-834-9049 • Fax: 608-329-8488
www.monroetruck.com

05090615-3
4/2/2014

Table of Contents

| | |
|--------------------------|----|
| General Information | 4 |
| How to Order Parts | 4 |
| Return Policy | 4 |
| Safety Instructions | 5 |
| Maintenance Instructions | 8 |
| Replacement Parts | 10 |
| Warranty | 33 |

General Information

- Use only Monroe Truck Equipment O.E.M. replacement parts. Failure to do so will void the warranty.
- Location descriptions are noted in direction of travel (i.e. front, rear, left and right).
- Delivery of replacement parts is subject to our sales delivery terms.
- Replacement parts listed in this manual reflect the most common items for this product. If you do not find the part you require, please call your distributor.
- Monroe Truck Equipment reserves the right to make revisions or alterations to the parts manual at any time.

How to Order Parts

To order or inquire about replacement parts, please contact the distributor or store that the product was purchased through. To speed the information flow, please have the following information available:

- Model Number
- Serial Number
- Part Number and/or Description of the Part
- Quantity Needed

For further information about Monroe Truck Equipment replacement parts, please call 877-834-9049.

Return Policy

Merchandise returned to Monroe Truck Equipment must have a Warranty Service Request (WSR) form filled out completely and signed by authorized personnel.

To get your WSR form for whole goods, call Snow & Ice Sales at 800-880-0109.

To get your WSR form for replacement parts, call Warranty at 877-834-9049..

All returned items are subject to a 15% restocking fee and ***must be sent freight pre-paid.***

Safety Instructions

Warning: Before working under the vehicle or around the wing, lower the moldboard to the ground, shut off the truck engine and remove the key from the ignition. Prevent accidental startup and operation of the wing to avoid personal injury.

Warning: Accidental lowering of the wing when driving or when working around the vehicle may cause death, severe injury, and property damage. When the wing is not being used actively for clearing snow, raise it all the way and connect the safety restraint chain(s) that prevent lowering. Never transport the wing at highway speeds unless the wing is raised and chained up.

- Locate and read all safety decals on the unit before operating the equipment. Familiarize yourself with all potential hazards in operating this equipment.
- Read all installation, operation, and maintenance instructions before operating the equipment.
- Keep all provided shields, covers, and guards in place during operation of the unit.
- Stay away from the wing when it is moving. Stay away from pinch points created by the moving wing components.
- Never work on or around the wing unless the vehicle is turned off and the ignition key is removed. Follow lock-out/tag procedures for working on hazardous equipment.
- Lower the wing to the ground before working on any of its components.
- When the wing is raised and not in use, always attach the safety restraint chains to prevent accidental and unexpected lowering of the wing.
- Be aware of the extra vehicle width created by the wing installation. Allow for the extra width when driving in traffic, passing parked vehicles, and entering buildings through overhead doors.
- When installing a new cutting edge, always “clip” the lower in-board corner of the edge to prevent the corner from catching on the pavement if the wing toe is set too low. If the square corner of a cutting edge catches the pavement, the wing can be thrown up and into the side of the vehicle cab, causing serious damage.
- Watch for hydraulic fluid leaks at fittings and hoses. High-pressure fluid leaks can penetrate skin and cause severe injury.

Safety Instructions *(Continued)*

- Do not climb or walk on the wing or its mounting components, especially when the unit is wet or icy.
- If the wing needs repair or the controls are not functioning properly, repair the unit immediately. Do not continue to operate a malfunctioning unit—further and more serious damage may occur.
- Do not disassemble spring-loaded components such as trip edges and push arms unless you have the correct tools and are trained in these tasks. Pre-loaded springs are under extreme compression and can cause severe injury if the spring force is released suddenly and unexpectedly.
- If the wing accidentally impacts an object during use, stop immediately and inspect all components. Look for bent and broken components. Do not continue to operate with a severely damaged wing.
- When removing and storing a wing for summer, locate it away from high traffic areas and block it securely so it cannot fall or be pushed over.

Welding Guidelines

- Structural welds may be defined by a Weld Procedure Specification (WPS) document. Where applicable, this document will be included in the installation instructions for Snow & Ice products. Where a WPS is provided, welds are to be performed following the specifications and instructions on the WPS.
- Where a WPS applies, the person performing the welding should be qualified (tested) to the procedure on the WPS. This is to verify that the person can successfully perform the required weld.
- If a WPS is not provided, follow the general guidelines given below.
- For stick (rod) welding (SMAW) use low-hydrogen rods such as AWS A5.1, E7018. Welding rods must be stored in accordance with AWS D1.1, Section 5.3.2.1 to prevent absorption of moisture and other contaminants.
- For wire (gas shield) welding (GMAW) use AWS A5.18, ER70S-6, F6 wire. Wire diameter must be 0.035" or 0.045 as dictated by the size of the weld or as indicated on the applicable WPS.

Welding Guidelines *(Continued)*

- All welds must have adequate penetration and fillet size to obtain maximum strength of the weld. Cold lap welds and undercutting are not acceptable. Unacceptable welds must be ground out and re-welded. Typically, 3/8" weld fillets are required, unless a WPS states differently.
- Verify that the welding machine being used is working properly and that the volt/amp gauges are accurate when making settings based on a WPS.
- Components to be welded must be clean and dry at the weld area, with paint, rust, and oil removed.
- Unless otherwise directed on a WPS, all parts to be welded must be at least 50° F before welding is performed.
- When welding cast parts such as pipe brace balls, the parts must be heated to 150° F for several minutes to drive out any moisture.
- When welding to large parts that will act as a heat sink, pre-heating of the weld area may be required to insure equal penetration on both parts. Refer to the applicable WPS or to AWS guidelines if available. Before heating parts, check for wiring, hoses, and other components that could be damaged by the heat. Remove or move these components before applying heat to the area.
- Disconnect all battery cables (both positive and ground) before welding to help prevent damage to electronic components on the chassis.
- Always be sure the welder has a good ground contact as close to the weld point as possible. Remove dirt, paint, and grease from the area where the ground will be connected. This will help prevent damage to electronic components on the chassis.
- Never "quench" hot welds or otherwise accelerate cooling. Allow all welds to cool in still air.
- Welding on MTE products for any reason other than instructed installation procedures is prohibited and may void the warranty on the product.
- Never cut, weld, or grind directly on a chassis frame. Do not drill additional holes through a chassis frame unless directed to do so in the installation instructions.
- This information applies only to products and installation instructions where welding is instructed and allowed. Use of welding where threaded fasteners are indicated in the installation instructions may void the warranty on the product and/or the OEM chassis components.

Maintenance Instructions

In Season:

Warning: Before working under the vehicle or around the wing, lower the moldboard to the ground, shut off the truck engine, and remove the keys from the ignition. Prevent accidental startup and operation of the wing to avoid personal injury.

Warning: Accidental lowering of the wing when driving or when working around the vehicle may cause death, severe injury, and property damage. When the wing is not being used actively for clearing snow, raise it all the way and connect the safety restraint chain(s) that prevent lowering. Never transport the wing at highway speeds unless the wing is raised and chained up.

- Re-torque all fasteners after the first 8 hours of use.
- Check for loose, damaged, and missing fasteners before each use.
- Inspect and re-torque all fasteners at the beginning of each plowing season.
- Lubricate grease fittings every 10 hours during normal use and more often during heavy use.
- For open slides on wing posts, apply a coating of grease as required.
- Tighten all hydraulic fittings after the first 8 hours of use.
- Inspect hydraulic fittings for leaks every week and tighten as required. If a hydraulic fitting continues to leak after being tightened, replace the fitting as soon as possible.
- Check the cutting edge for wear after each use. Replace the cutting edge when it wears to within ½" of the moldboard.
- When installing a new cutting edge, "clip" the lower in-board corner as directed in this instruction manual to prevent catching on pavement.
- Check the operation of the wing before each use.
 - Verify that the wing has full up and down travel. Check all functions: heel, toe, raise/lower, and benching function (if applicable).
 - Investigate the cause of any binding or sticking in the wing travel or the failure of the wing to raise or lower fully.
 - If the hydraulic valves are operated by cables, verify that the lever(s) and cables operate smoothly and easily, and that the levers snap back to center when released.
- Inspect the hydraulic hoses and any electrical wiring for wear or damage every month. Check hoses and wiring attached to moving components closely.
- At the end of each storm event, pressure-wash the wing and its components, especially any horizontal surfaces that can hold road salt and other corrosive chemicals. Removing salt and other chemicals regularly will prolong the life of all components.

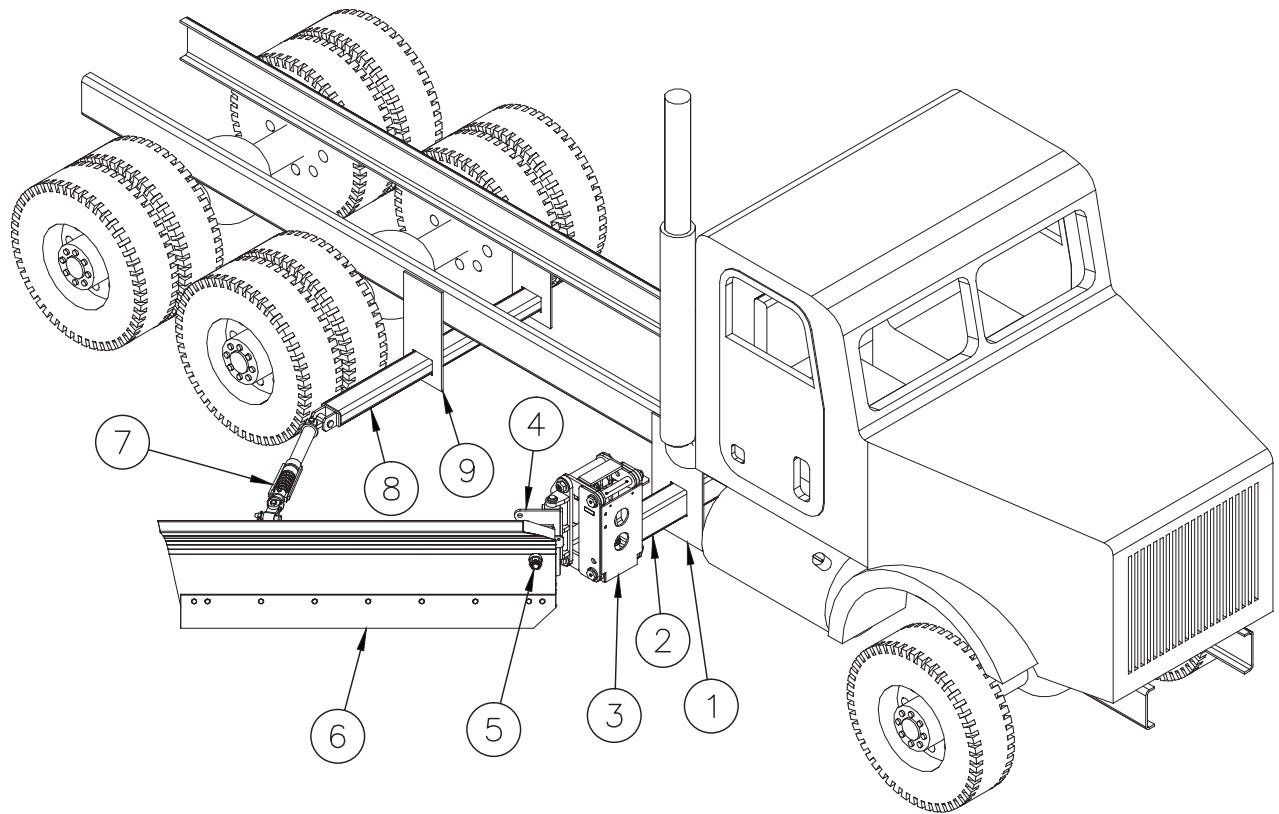
Maintenance Instructions *(Continued)*

In Season (Continued):

- Due to the harsh operating conditions of a wing, regular inspection and maintenance is critical to safe operation and durability of the wing. The owner or end user of the wing must create and enforce the use of an inspection and maintenance schedule.
- If the wing is subjected to serious impact against another object, inspect it closely for bent or broken parts.

Off Season:

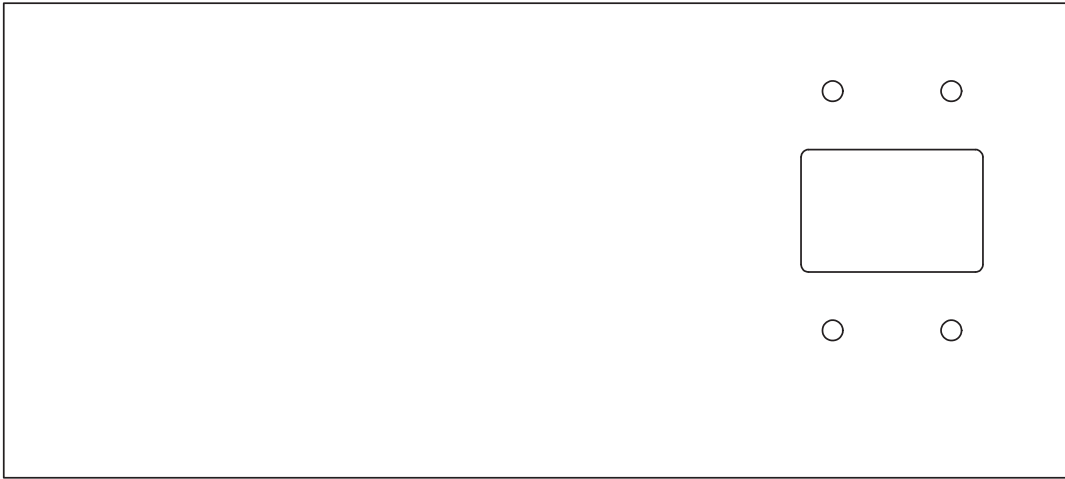
- At the end of the plowing season, the wing moldboard should be removed. For some installations, the mounting brackets and cross tube(s) may also be removed.
- Inspect the moldboard and the mounting components on the truck before removal. Make any required repairs immediately so that the wing is ready to be reinstalled and used at the start of the next winter season.
- Before disconnecting any hydraulic hoses, lower the wing to the ground. If the wing lowers unexpectedly, it can cause severe injury to feet and hands.
- When quick-disconnects are separated, cover and cap the ends to prevent the entry of contaminants into the hydraulic system and possible impact damage to the ends.
- If there are no quick disconnects and hoses are removed from fittings, cap or plug all open hydraulic fittings.
- The exposed areas on hydraulic cylinder rams should be covered with grease during the storage period. Remove the grease before returning the wing to service.
- If possible, store the wing and components indoors to reduce rusting and UV damage to hoses.
- Keep all loose parts with the wing so they are readily available for re-installation.
- When reinstalling the wing, replace any damaged fasteners and follow the fastener torquing guidelines for in-season use.



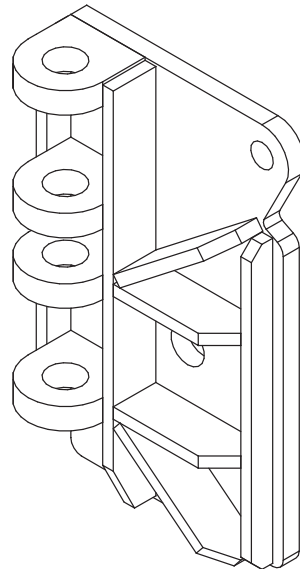
PARA-GLIDE JUNIOR WING

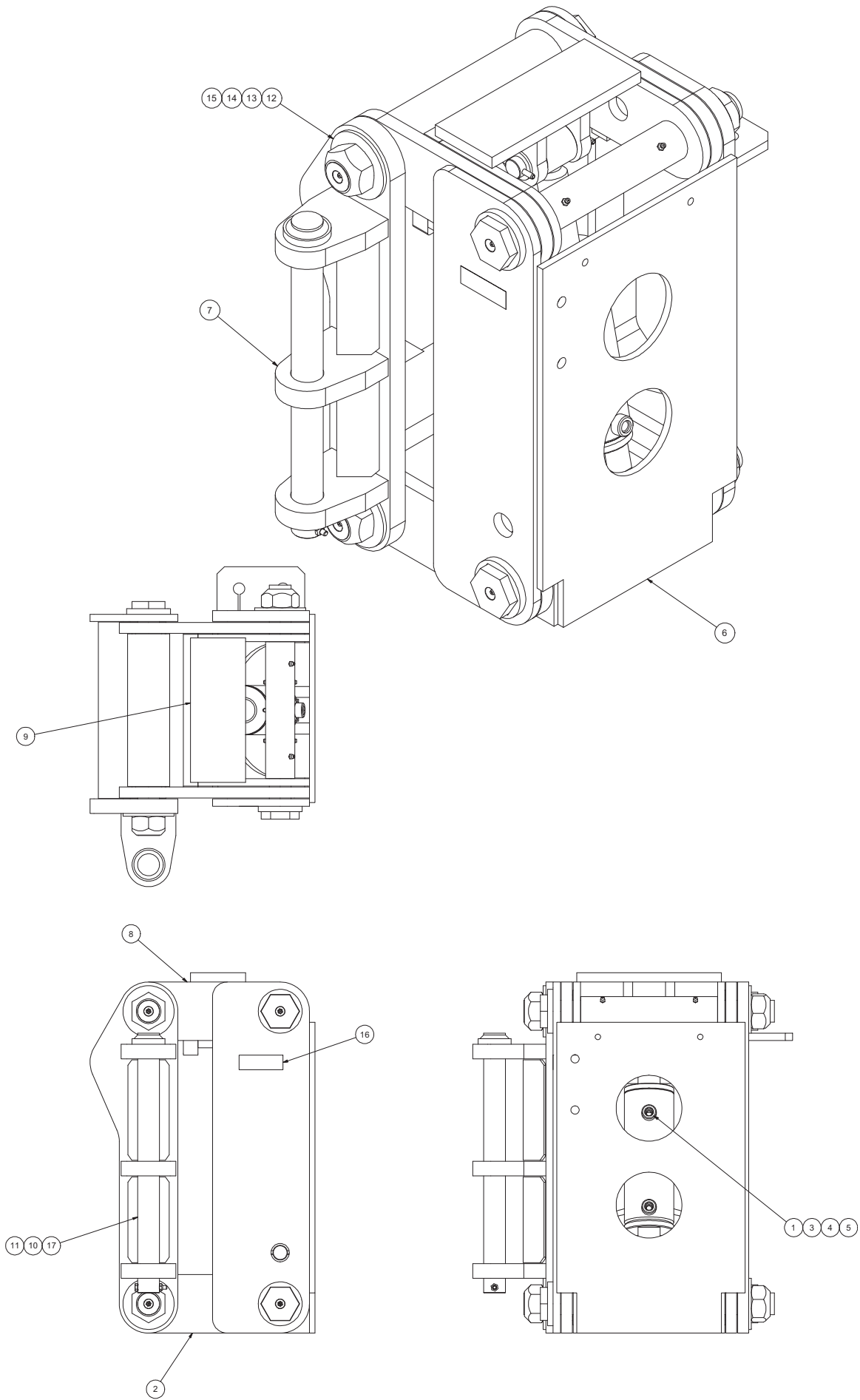
| Item | Qty. | Part Number | Description | |
|------|------|--|---|--|
| 1 | 2 | 00140009 | SIDE PLATE, WING, PARAGLIDE, MM | <i>See Page 11</i> |
| 2 | 1 | 00014619 | TUBE, RECT, MS, 6 X 4 X .5 X 58 | |
| 3 | 1 | 00142280 00142281 | WING POST ASSEMBLY, RHMM, DF, 1.563 WING POST ASSEMBLY, LHMM, DF, 1.563 | <i>See Page 13</i> <i>See Page 15</i> |
| 4 | 1 | 00018437 00018438 00120170 00122520 | BRACKET WELDMENT, MOUNTING, RH BRACKET WELDMENT, MOUNTING, LH (Used on Non-Trip and Trip Edge Moldboards) MOUNTING BLOCK ASSEMBLY, FULL TRIP, RH MOUNTING BLOCK ASSEMBLY, FULL TRIP, LH (Used on Full Trip Moldboards) | <i>See Page 11</i> <i>See Page 17</i> <i>See Page 19</i> |
| 5 | 1 | 05017028 | BOLT, 1.50-6 X 7, G8, HHCS, ZINC | |
| 6 | 1 | ---- | MOLDBOARD ASSEMBLY, WING, JUNIOR | |
| 7 | 1 | 00063013 | PUSHARM ASSEMBLY, 2.5 SCHED 80, 33.0 | <i>See Page 25</i> |
| 8 | 1 | 00063034 | CROSS TUBE, RR, JR WING | <i>See Page 26</i> |
| 9 | 2 | 00000193 | SIDE PLATE, FRONT | <i>See Page 26</i> |
| 10 | 1 | 00043524 | MOUNTING HARDWARE KIT, JR WING | <i>See Page 27</i> |
| 11 | 1 | 00038868 | PIPE, MS, 2 X SCHE80 X 41.813 | |
| 12 | 1 | 05002502 05002897 05002952 05003062 | CYLINDER, 3X10, DA, NITRIDED CYLINDER, 3X10, DECEL CYLINDER, 4X10, DA, NITRIDED CYLINDER, 4X10, DECEL | <i>See Page 28</i> <i>See Page 29</i> <i>See Page 30</i> <i>See Page 31</i> |
| 13 | 1 | 00103049 00000183 | CYLINDER LINK, JR WING MOLDBOARD CYLINDER LINK, DECEL, JR WING MOLDBOARD | |

00140009 SIDE PLATE, WING, PARAGLIDE, MM



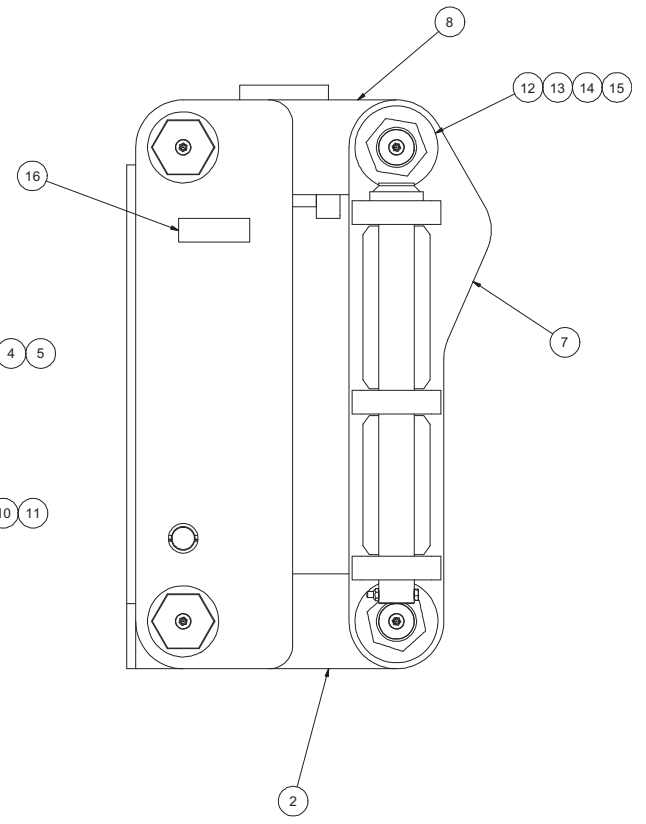
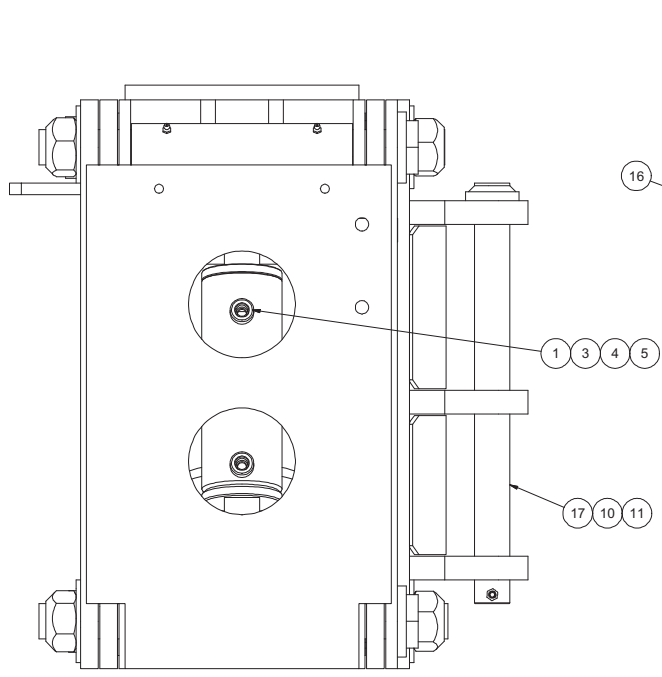
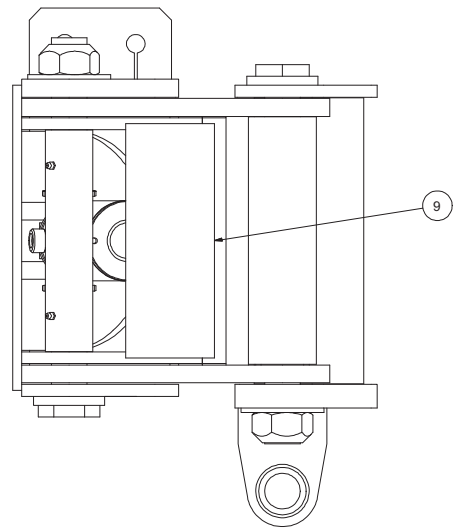
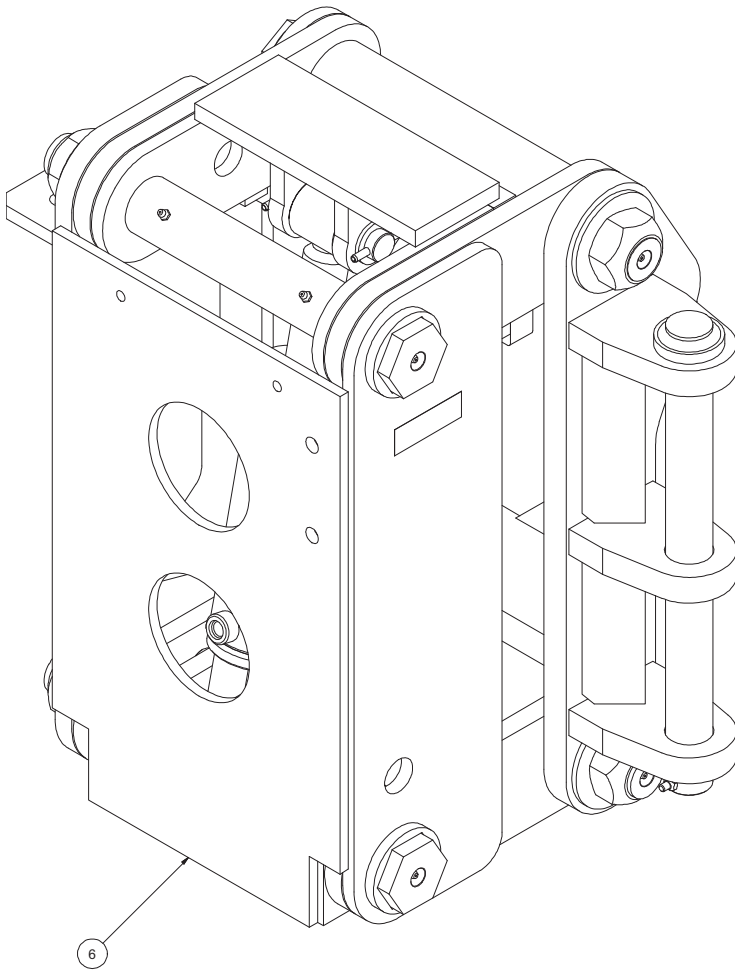
00018437 BRACKET WELDMENT, MOUNTING, RH
00018438 BRACKET WELDMENT, MOUNTING, LH





00142280 WING POST ASSEMBLY, RHMM, DF 1.563

| Item | Qty. | Part Number | Description | |
|-------------|-------------|--------------------|--------------------------------|-------------------------|
| 1 | 1 | 05003214 | CYLINDER,3x5,DA,EXT WING HEEL | <i>See This Page 32</i> |
| 2 | 1 | 00135804 | ARM WLDMT,LOWER,POST,WING | |
| 3 | 4 | 05022004 | PIN .250 x 2.25 ROLL ZC | |
| 4 | 4 | 05021202 | BUSHING 1.50x1.00x10GA ZC | |
| 5 | 2 | 00018157 | PIN 1.000 x 4.500,NO HEAD,ZC | |
| 6 | 1 | 00135800 | WING POST WLDMT,RHMM,.750 | |
| 7 | 1 | 00142283 | ARM WLDMT,LIFT,1.563 HOLE,RH | |
| 8 | 1 | 00135812 | ARM WLDMT,UPPER,POST,WING | |
| 9 | 1 | 00137850 | LINK WLDMT,FLOAT,POST,WING | |
| 10 | 1 | 05010597 | BOLT .250-20 x 2.00 G8 HHCS ZC | |
| 11 | 1 | 05020899 | NUT .250-20 GC TOPLOCK C&W | |
| 12 | 4 | 05021318 | WASHER 1.500 FLAT ZC | |
| 13 | 4 | 05020806 | NUT 1.50-6 GC TOPLOCK C&W | |
| 14 | 8 | 05050288 | GREASE ZERK,.250-28 STRAIGHT | |
| 15 | 4 | 00136886 | BOLT,PARAGLIDE,15.125 | |
| 16 | 1 | 05053301 | DECAL,1"X4",WHITE/BLACK, PARA | |
| 17 | 1 | 00095076 | PIN WLDMT,MTG BLOCK,JR WING | |

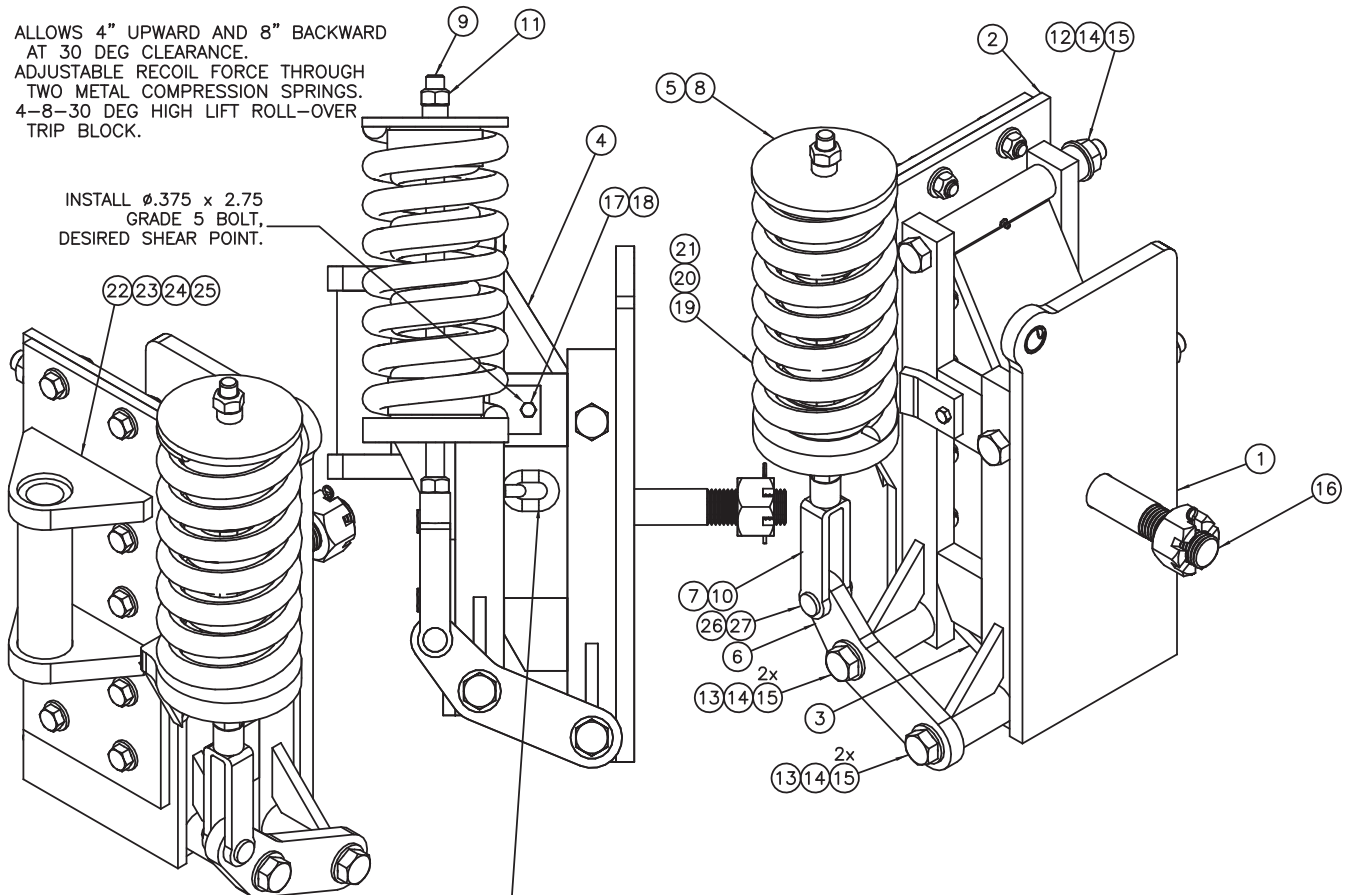


00142281 WING POST ASSEMBLY, LHMM, DF, 1.563

| Item | Qty. | Part Number | Description | |
|-------------|-------------|--------------------|--------------------------------|-------------------------|
| 1 | 1 | 05003214 | CYLINDER,3x5,DA,EXT WING HEEL | <i>See This Page 32</i> |
| 2 | 1 | 00135804 | ARM WLDMT,LOWER,POST,WING | |
| 3 | 4 | 05022004 | PIN .250 x 2.25 ROLL ZC | |
| 4 | 4 | 05021202 | BUSHING 1.50x1.00x10GA ZC | |
| 5 | 2 | 00018157 | PIN 1.000 x 4.500,NO HEAD,ZC | |
| 6 | 1 | 00137864 | WING POST WLDMT,LHMM,.750 | |
| 7 | 1 | 00142282 | ARM WLDMT,LIFT,1.563 HOLE,LH | |
| 8 | 1 | 00135812 | ARM WLDMT,UPPER,POST,WING | |
| 9 | 1 | 00137850 | LINK WLDMT,FLOAT,POST,WING | |
| 10 | 1 | 05010597 | BOLT .250-20 x 2.00 G8 HHCS ZC | |
| 11 | 1 | 05020899 | NUT .250-20 GC TOPLOCK C&W | |
| 12 | 4 | 05021318 | WASHER 1.500 FLAT ZC | |
| 13 | 4 | 05020806 | NUT 1.50-6 GC TOPLOCK C&W | |
| 14 | 8 | 05050288 | GREASE ZERK,.250-28 STRAIGHT | |
| 15 | 4 | 00136886 | BOLT,PARAGLIDE,15.125 | |
| 16 | 1 | 05053301 | DECAL,1"X4", BLACK/WHITE, PARA | |
| 17 | 1 | 00095076 | PIN WLDMT,MTG BLOCK,JR WING | |

ALLOWS 4" UPWARD AND 8" BACKWARD
AT 30 DEG CLEARANCE.
ADJUSTABLE RECOIL FORCE THROUGH
TWO METAL COMPRESSION SPRINGS.
4-8-30 DEG HIGH LIFT ROLL-OVER
TRIP BLOCK.

INSTALL $\phi.375 \times 2.75$
GRADE 5 BOLT,
DESIRED SHEAR POINT.



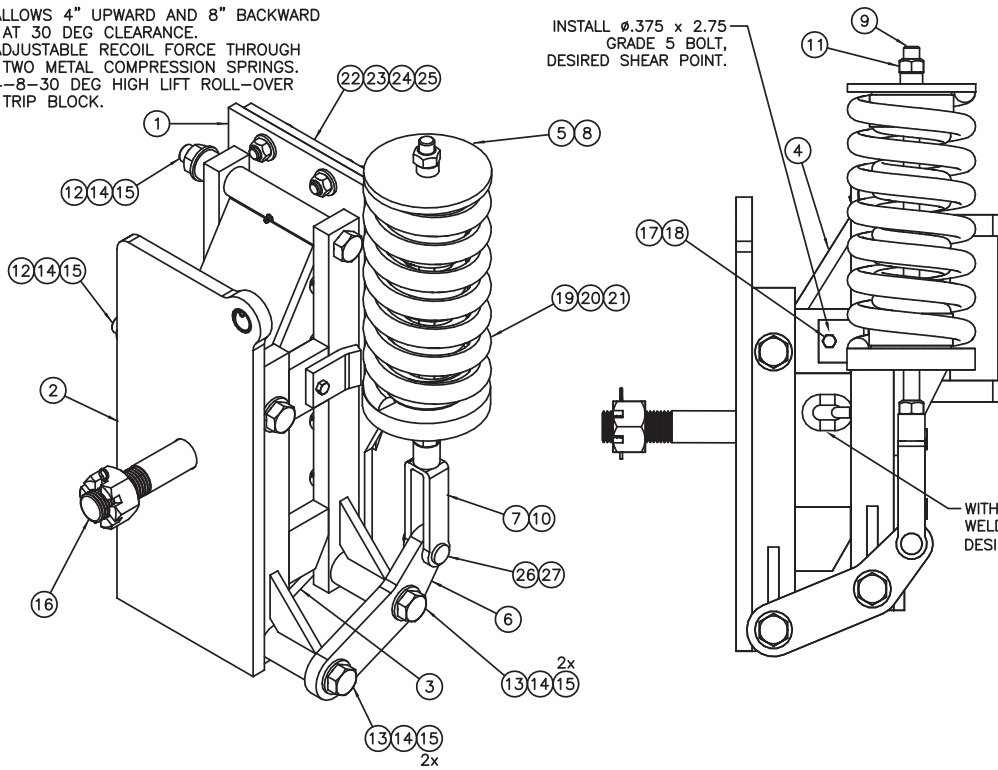
WITH BLOCK IN FULL TRIP POSITION,
WELD LAST LINK OF CHAIN TO PLOW PORTION.
DESIRED LIMITING STRAP/SAFETY DEVICE.

00120170 MTG BLOCK ASSY, JR WING, FULL TRIP, RH

| Item | Qty. | Part Number | Description |
|-------------|-------------|--------------------|---|
| 1 | 1 | 00120160 | BLOCK WLDMT, MTG, FULL TRIP, JR |
| 2 | 1 | 00125189 | BLOCK WLDMT, MTG, FULL TRIP, JR |
| 3 | 1 | 00021590 | LINKAGE ASSY, WING, 5.0, MTG BRKT |
| 4 | 1 | 00021591 | LINKAGE ASSY, WING, 8.750, MTG BRKT |
| 5 | 1 | 00021588 | CAP ASSY MTG BRKT WING |
| 6 | 1 | 00125186 | LEVER, BLOCK, MTG, TRIP, FULL, JR |
| 7 | 1 | 05050180 | CLEVIS, .750-16x6 |
| 8 | 1 | 00122517 | SPACER WLDMT, UPPER, WING, JR |
| 9 | 1 | 00120163 | ROD, .750-16x18.25, 2.5&4.25 THREADED END |
| 10 | 1 | 05020327 | NUT .750-16 G8 HEX ZC |
| 11 | 1 | 05020987 | NUT .750-16 GC TOPLOCK C&W |
| 12 | 2 | 05017144 | BOLT .875-9 x 10.500 G8 HHCS ZC |
| 13 | 2 | 05017145 | BOLT .875-9 x 14.000 G8 HHCS ZC |
| 14 | 6 | 05020969 | NUT .875-9 GC TOPLOCK C&W |
| 15 | 6 | 05021019 | WASHER .875 MIL-CARB SAE ZINC |
| 16 | 1 | 05016987 | BOLT 1.50-6 x 7.50 G8 ZC W/CASTLE NUT |
| 17 | 2 | 05010356 | BOLT .375-16 x 2.750 G5 HHCS ZC |
| 18 | 2 | 05020898 | NUT .375-16 GC TOPLOCK C&W |
| 19 | 1 | 05035105 | SPRING, COMP, 3.687 OD, 12.0 OAL, .656 WIRE |
| 20 | 1 | 05035106 | SPRING, COMP, 6.0 OD, 12.0 OAL, 1.0 WIRE |
| 21 | 1 | 00122519 | SPACER WLDMT, LOWER, WING, JR |
| 22 | 1 | 00125190 | BLOCK WLDMT, MTG, FULL TRIP, JR |
| 23 | 10 | 05010740 | BOLT .625-11 x 2.250 G8 HHCS ZC |
| 24 | 20 | 05021007 | WASHER .625 FLAT MIL-CARB ZC |
| 25 | 10 | 05020837 | NUT .625-11 GC TOPLOCK C&W |
| 26 | 1 | 05022107 | PIN .75 x 2.313 CLEVIS |
| 27 | 1 | 05022199 | PIN .1563 x 1 COTTER ZC |

ALLOWS 4" UPWARD AND 8" BACKWARD
 AT 30 DEG CLEARANCE.
 ADJUSTABLE RECOIL FORCE THROUGH
 TWO METAL COMPRESSION SPRINGS.
 4-8-30 DEG HIGH LIFT ROLL-OVER
 TRIP BLOCK.

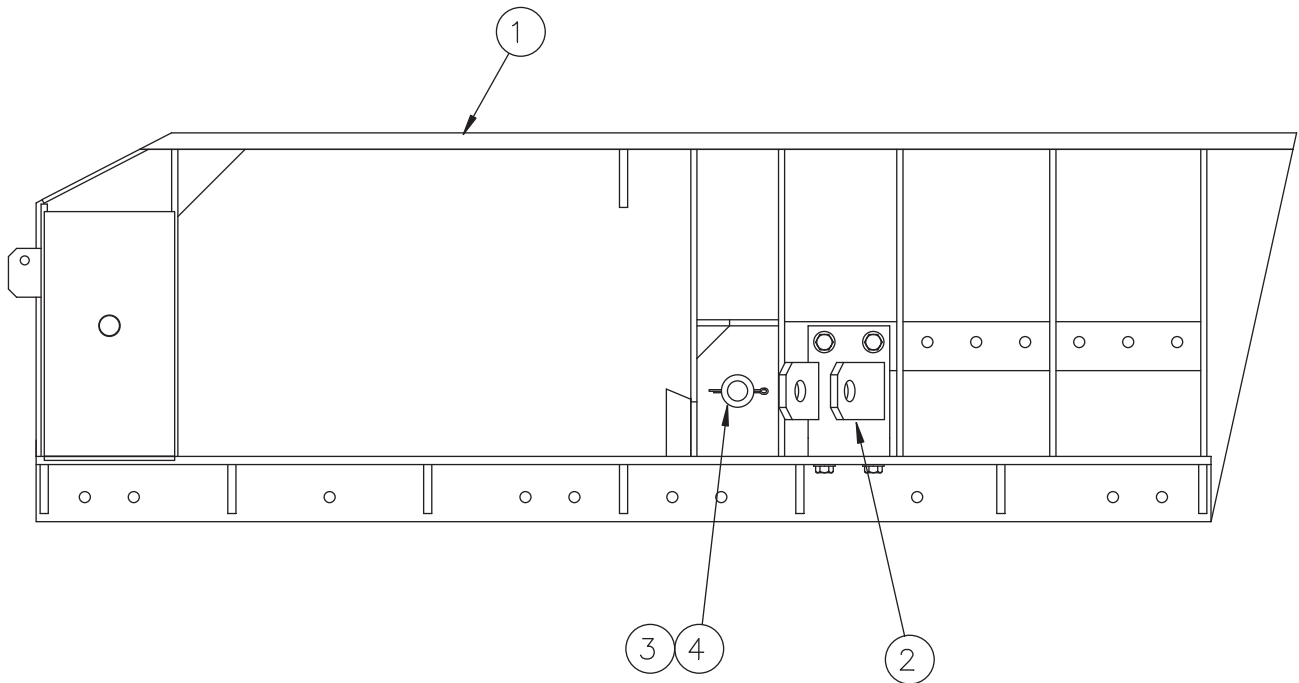
INSTALL $\phi.375 \times 2.75$
 GRADE 5 BOLT,
 DESIRED SHEAR POINT.



WITH BLOCK IN FULL TRIP POSITION,
 WELD LAST LINK OF CHAIN TO FLOW PORTION.
 DESIRED LIMITING STRAP/SAFETY DEVICE.

00122520 MTG BLOCK ASSY, JR WING, FULL TRIP, LH

| Item | Qty. | Part Number | Description |
|-------------|-------------|--------------------|---|
| 1 | 1 | 00125192 | BLOCK WLDMT,MTG,FULL TRIP,LH,JR |
| 2 | 1 | 00122521 | BLOCK WLDMT,MTG,FULL TRIP,LH,JR |
| 3 | 1 | 00021590 | LINKAGE ASSY,WING,5.0,MTG BRKT |
| 4 | 1 | 00021591 | LINKAGE ASSY,WING,8.750,MTG BRKT |
| 5 | 1 | 00021588 | CAP ASSY MTG BRKT WING |
| 6 | 1 | 00125186 | LEVER,BLOCK,MTG,TRIP,FULL,JR |
| 7 | 1 | 05050180 | CLEVIS,.750-16x6 |
| 8 | 1 | 00122517 | SPACER WLDMT,UPPER,WING,JR |
| 9 | 1 | 00120163 | ROD,.750-16x18.25,2.5&4.25 THREADED END |
| 10 | 1 | 05020327 | NUT .750-16 G8 HEX ZC |
| 11 | 1 | 05020987 | NUT .750-16 GC TOPLOCK C&W |
| 12 | 2 | 05017144 | BOLT .875-9 x 10.500 G8 HHCS ZC |
| 13 | 2 | 05017145 | BOLT .875-9 x 14.000 G8 HHCS ZC |
| 14 | 6 | 05020969 | NUT .875-9 GC TOPLOCK C&W |
| 15 | 6 | 05021019 | WASHER .875 MIL-CARB SAE ZINC |
| 16 | 1 | 05016987 | BOLT 1.50-6 x 7.50 G8 ZC W/CASTLE NUT |
| 17 | 2 | 05010356 | BOLT .375-16 x 2.750 G5 HHCS ZC |
| 18 | 2 | 05020898 | NUT .375-16 GC TOPLOCK C&W |
| 19 | 1 | 05035105 | SPRING,COMP,3.687 OD,12.0 OAL,.656 WIRE |
| 20 | 1 | 05035106 | SPRING,COMP,6.0 OD,12.0 OAL,1.0 WIRE |
| 21 | 1 | 00122519 | SPACER WLDMT,LOWER,WING,JR |
| 22 | 1 | 00125190 | BLOCK WLDMT,MTG,FULL TRIP,JR |
| 23 | 10 | 05010740 | BOLT .625-11 x 2.250 G8 HHCS ZC |
| 24 | 20 | 05021007 | WASHER .625 FLAT MIL-CARB ZC |
| 25 | 10 | 05020837 | NUT .625-11 GC TOPLOCK C&W |
| 26 | 1 | 05022107 | PIN .75 x 2.313 CLEVIS |
| 27 | 1 | 05022199 | PIN .1563 x 1 COTTER ZC |

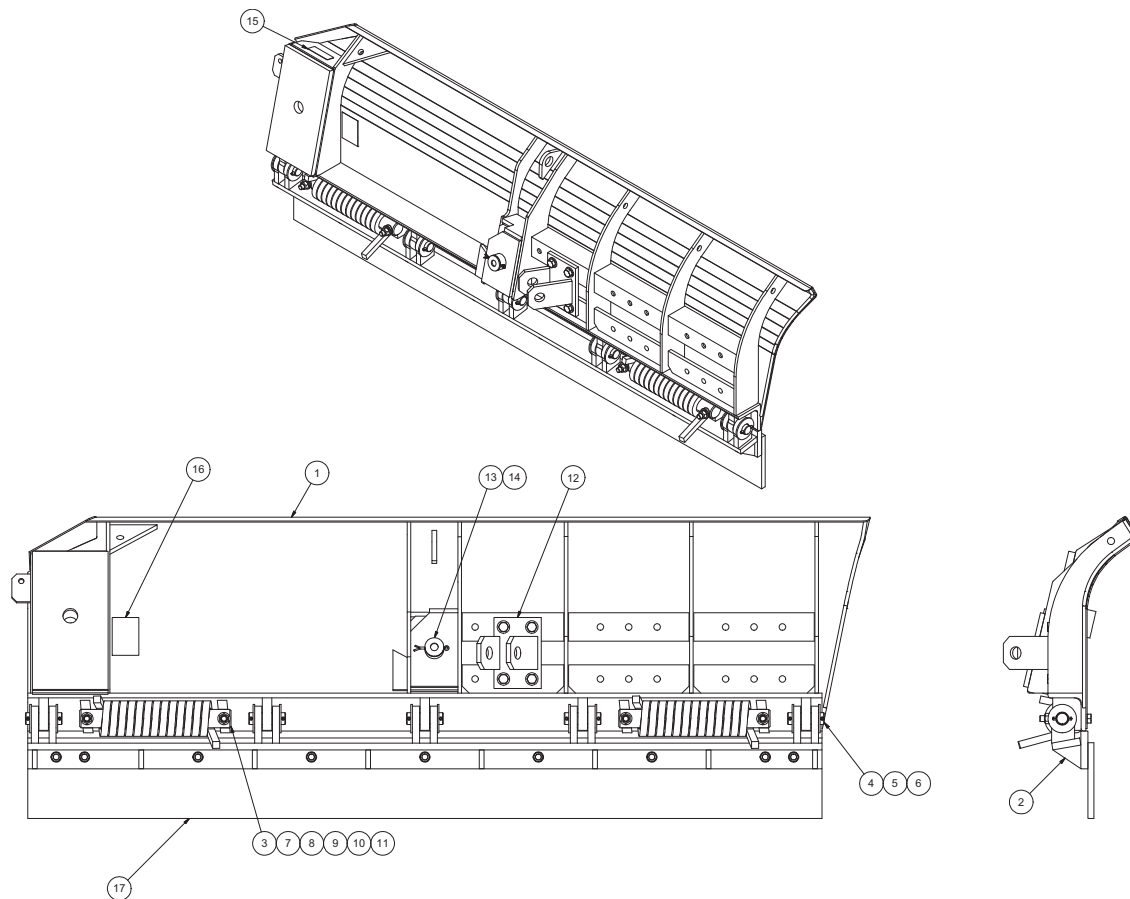


MOLDBOARD ASSEMBLY, JRWMB, 10GA, STRAIGHT

| Item | Qty. | Part Number | Description |
|------|------|-------------|--|
| 1 | 1 | 00027185 | MOLDBOARD WELDMENT, WING, 6JRWMB, 10GA, STRAIGHT |
| | | 00027186 | MOLDBOARD WELDMENT, WING, 7JRWMB, 10GA, STRAIGHT |
| | | 00063036 | MOLDBOARD WELDMENT, WING, 8JRWMB, 10GA, STRAIGHT |
| | | 00027198 | MOLDBOARD WELDMENT, WING, 9JRWMB, 10GA, STRAIGHT |
| | | 00045379 | MOLDBOARD WELDMENT, WING, 6JRWMB-L, 10GA, STRAIGHT |
| | | 00050108 | MOLDBOARD WELDMENT, WING, 7JRWMB-L, 10GA, STRAIGHT |
| | | 00050109 | MOLDBOARD WELDMENT, WING, 8JRWMB-L, 10GA, STRAIGHT |
| | | 00050110 | MOLDBOARD WELDMENT, WING, 9JRWMB-L, 10GA, STRAIGHT |
| 2 | 1 | 00082726 | BRACKET, PUSHARM, WING MOUNT, RH, JR |
| | | 00082727 | BRACKET, PUSHARM, WING MOUNT, LH, JR |
| 3 | 1 | 00063059 | PIN ASSEMBLY |
| 4 | 1 | 05022005 | PIN, .250 X 3, COTTER, ZINC |
| 5 | 1 | 05050095 | SERIAL TAG |
| 6 | 1 | 00055962 | DECAL KIT, WING <i>See This Page 22</i> |
| 7 | 1 | 00049785 | CUTTING EDGE KIT, 6', .625 X 8 |
| | | 00049786 | CUTTING EDGE KIT, 7', .625 X 8 |
| | | 00049750 | CUTTING EDGE KIT, 8', .625 X 8 |
| | | 00049751 | CUTTING EDGE KIT, 9', .625 X 8 |
| | | 00061146 | CUTTING EDGE KIT, 6', .750 X 6, CARBIDE, 1.5 GL |
| | | 00061147 | CUTTING EDGE KIT, 7', .750 X 7, CARBIDE, 1.5 GL |
| | | 00057618 | CUTTING EDGE KIT, 8', .750 X 8, CARBIDE, 1.5 GL |
| | | 00057619 | CUTTING EDGE KIT, 9', .750 X 9, CARBIDE, 1.5 GL |

See This Page 23

See This Page 24



00138207 MOLDBOARD ASSEMBLY,7JRWMB-TE, 10GA, SQ SPG

| Item | Qty. | Part Number | Description |
|------|------|-------------|---|
| 1 | 1 | 00138206 | MLDBD WLDMT,WING,7JRWMB-TE |
| 2 | 1 | 00136899 | TRIP EDGE WLDMT,WING,7' |
| 3 | 2 | 00130531 | PIN,1.938DIAx16.00,NO HEAD |
| 4 | 5 | 00054787 | PIN,1.25 x 3.875,NO HEAD |
| 5 | 10 | 05021316 | WASHER 1.25 FLAT ZC |
| 6 | 10 | 05022039 | PIN .313 x 2.000 ROLL ZC |
| 7 | 4 | 00128582 | SADDLE WASHER,OLET |
| 8 | 4 | 05010749 | BOLT .625-11 x 5.00 G8 HHCS ZC |
| 9 | 4 | 05021017 | WASHER .625 FLAT MIL-CARB SAE |
| 10 | 4 | 05020837 | NUT .625-11 GC TOPLOCK C&W |
| 11 | 2 | 05035110 | SPRING,TORSION,.750 SQ WIRE |
| 12 | 1 | 00102297 | BRACKET,PUSHARM,WING MNT,JR |
| 13 | 1 | 00063059 | PIN WELDMENT |
| 14 | 1 | 05022005 | PIN .250 x 3.000 COTTER |
| 15 | 1 | 05050095 | TAG,SERIAL NUMBER, STANDARD |
| 16 | 1 | 00055962 | DECAL KIT,PLOW/WING <i>See This Page 22</i> |
| 17 | 1 | 00049786 | CE KIT,7',.625 x 8.000,TPCS <i>See This Page 23</i> |



WARNING

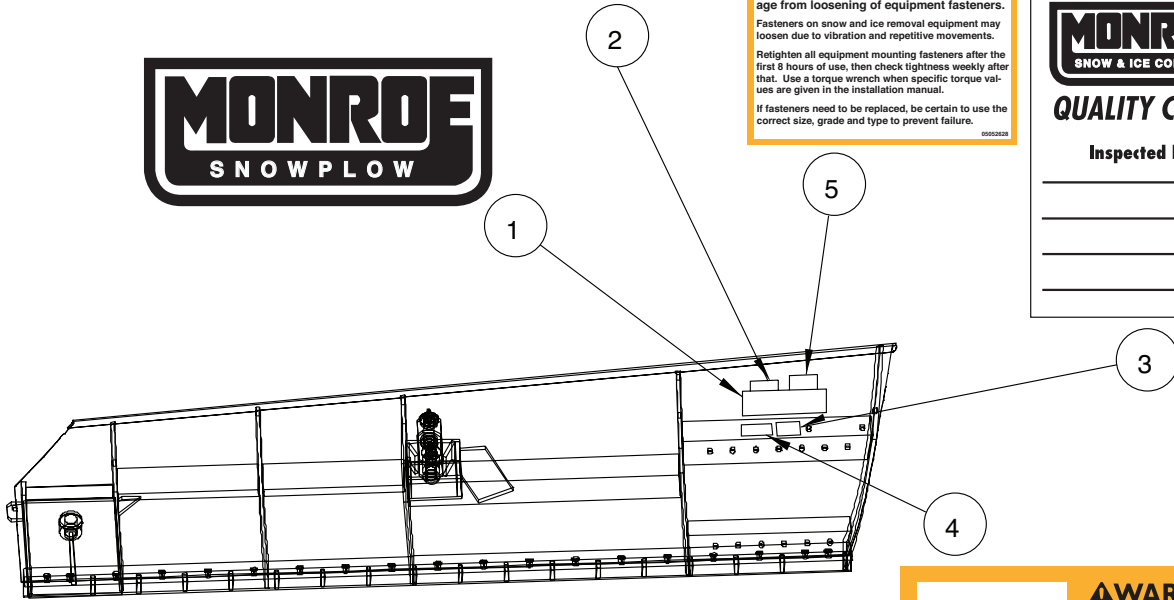
Possible serious injury and equipment damage from loosening of equipment fasteners. Fasteners on snow and ice removal equipment may loosen due to vibration and repetitive movements. Retighten all equipment mounting fasteners after the first 8 hours of use, then check tightness weekly after that. Use a torque wrench when specific torque values are given in the installation manual. If fasteners need to be replaced, be certain to use the correct size, grade and type to prevent failure.

MONROE
SNOW & ICE CONTROL

QUALITY CHECK

Inspected by: _____

1 0505231



WARNING

Springs under tension! If spring releases while performing maintenance, serious injury or death could result. Use caution when working in area.

IF DEFACED - ORDER PART NO. 05052547

| 00055962 DECAL KIT, PLOW | | | |
|--------------------------|------|-------------|-------------------------------------|
| Item | Qty. | Part Number | Description |
| 1 | 1 | 05051507 | DECAL,MONROE SNOWPLOW, 12x5 |
| 2 | 1 | 05050681 | DECAL,4" x2",BONDED POWDER |
| 3 | 1 | 05052311 | DECAL,4" X 3" QUALITY CHECK |
| 4 | 1 | 05052547 | DECAL,WARNING SPRINGS UNDER TENSION |
| 5 | 1 | 05052628 | DECAL,WARNING,TIGHTEN FASTENERS |

00049785 CUTTING EDGE KIT, 6', .625 X 8, TPCS

| Item | Qty. | Part Number | Description |
|------|------|-------------|--------------------------------------|
| 1 | 1 | 05031072 | CUTTING EDGE, .625 X 8" X 6', TPCS |
| 2 | 8 | 05014551 | BOLT, .625-11 X 2.5, G8, DHCS, PLAIN |
| 3 | 8 | 05021383 | WASHER, .625, LOCK, ZINC |
| 4 | 8 | 05020270 | NUT, .625-11, G8, HEX, ZINC |

00049786 CUTTING EDGE KIT, 7', .625 X 8, TPCS

| Item | Qty. | Part Number | Description |
|------|------|-------------|--------------------------------------|
| 1 | 1 | 05031074 | CUTTING EDGE, .625 X 8" X 7', TPCS |
| 2 | 9 | 05014551 | BOLT, .625-11 X 2.5, G8, DHCS, PLAIN |
| 3 | 9 | 05021383 | WASHER, .625, LOCK, ZINC |
| 4 | 9 | 05020270 | NUT, .625-11, G8, HEX, ZINC |

00049750 CUTTING EDGE KIT, 8', .625 X 8, TPCS

| Item | Qty. | Part Number | Description |
|------|------|-------------|--------------------------------------|
| 1 | 1 | 05031075 | CUTTING EDGE, .625 X 8" X 8', TPCS |
| 2 | 10 | 05014551 | BOLT, .625-11 X 2.5, G8, DHCS, PLAIN |
| 3 | 10 | 05021383 | WASHER, .625, LOCK, ZINC |
| 4 | 10 | 05020270 | NUT, .625-11, G8, HEX, ZINC |

00049751 CUTTING EDGE KIT, 9', .625 X 8, TPCS

| Item | Qty. | Part Number | Description |
|------|------|-------------|--------------------------------------|
| 1 | 1 | 05031076 | CUTTING EDGE, .625 X 8" X 9', TPCS |
| 2 | 11 | 05014551 | BOLT, .625-11 X 2.5, G8, DHCS, PLAIN |
| 3 | 11 | 05021383 | WASHER, .625, LOCK, ZINC |
| 4 | 11 | 05020270 | NUT, .625-11, G8, HEX, ZINC |

00061146 CUTTING EDGE, 6', .750 X 6, CARBIDE, TE 1.5 GL

| Item | Qty. | Part Number | Description |
|------|------|-------------|---|
| 1 | 2 | 05031082 | CUTTING EDGE, CARBIDE, .75" X 6" X 3', TPCS |
| 2 | 10 | 05014555 | BOLT, .625-11 X 3.5, G8, DHCS PLAIN |
| 3 | 10 | 05021383 | WASHER, .625, LOCK, ZINC |
| 4 | 10 | 05020270 | NUT, .625-11, G8, HEX, ZINC |
| 5 | 2 | 05031008 | CUTTING EDGE, .5 X 6 X 3', TPCS |

00061147 CUTTING EDGE, 7', .750 X 6, CARBIDE, TE 1.5 GL

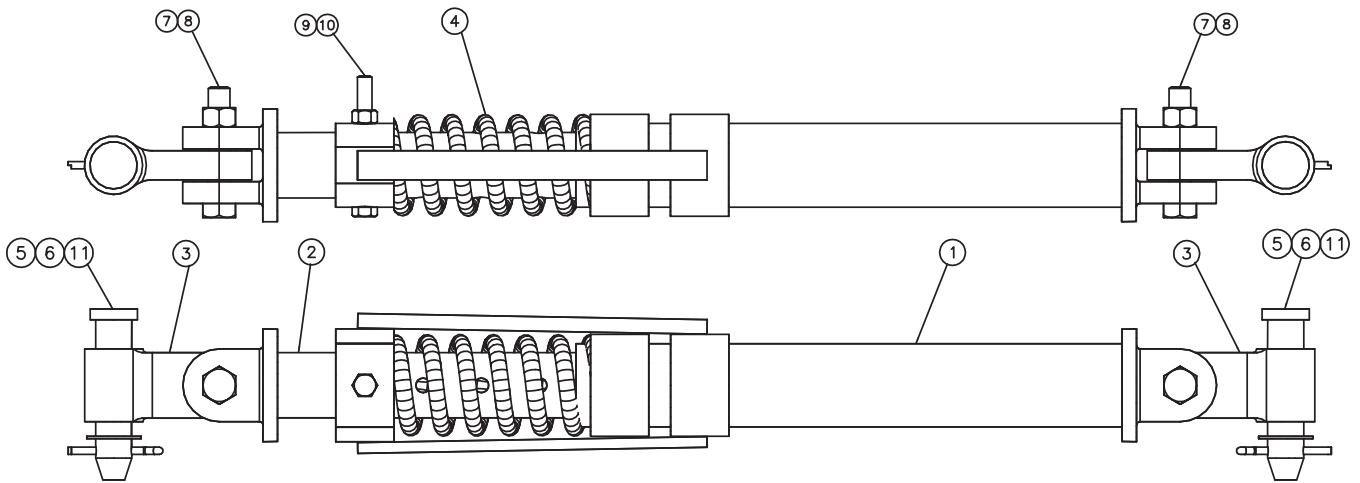
| Item | Qty. | Part Number | Description |
|------|------|-------------|---|
| 1 | 1 | 05031083 | CUTTING EDGE, CARBIDE, .75" X 6" X 4', TPCS |
| 2 | 11 | 05014555 | BOLT, .625-11 X 3.5, G8, DHCS PLAIN |
| 3 | 11 | 05021383 | WASHER, .625, LOCK, ZINC |
| 4 | 11 | 05020270 | NUT, .625-11, G8, HEX, ZINC |
| 5 | 1 | 05031009 | CUTTING EDGE, .5 X 6 X 4', TPCS |
| 6 | 1 | 05031082 | CUTTING EDGE, CARBIDE, .75" X 6" X 3', TPCS |
| 7 | 1 | 05031008 | CUTTING EDGE, .5 X 6 X 3', TPCS |

00057618 CUTTING EDGE, 8', .750 X 6, CARBIDE, 1.5 GL

| Item | Qty. | Part Number | Description |
|------|------|-------------|---|
| 1 | 2 | 05031083 | CUTTING EDGE, CARBIDE, .75" X 6" X 4', TPCS |
| 2 | 10 | 05014555 | BOLT, .625-11 X 3.5, G8, DHCS PLAIN |
| 3 | 10 | 05021383 | WASHER, .625, LOCK, ZINC |
| 4 | 10 | 05020270 | NUT, .625-11, G8, HEX, ZINC |
| 5 | 1 | 05031099 | CUTTING EDGE, .5 X 6 X 8', TPCS |

00057619 CUTTING EDGE, 9', .750 X 6, CARBIDE, 1.5 GL

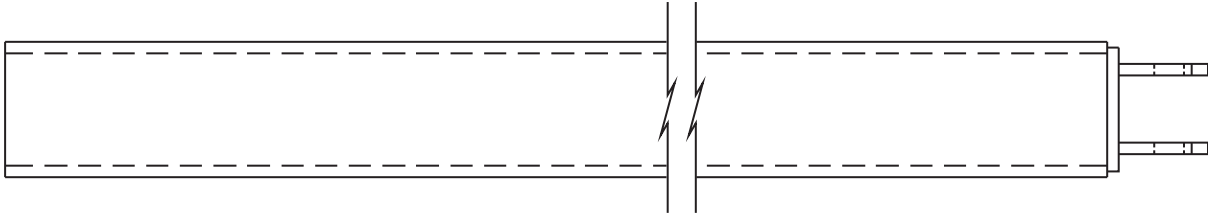
| Item | Qty. | Part Number | Description |
|------|------|-------------|---|
| 1 | 3 | 05031082 | CUTTING EDGE, CARBIDE, .75" X 6" X 3', TPCS |
| 2 | 11 | 05014555 | BOLT, .625-11 X 3.5, G8, DHCS PLAIN |
| 3 | 11 | 05021383 | WASHER, .625, LOCK, ZINC |
| 4 | 11 | 05020270 | NUT, .625-11, G8, HEX, ZINC |
| 5 | 1 | 05031033 | CUTTING EDGE, .5 X 6 X 9', TPCS |



00063013 PUSHARM ASSEMBLY, 2.5 SCHED 80, 33.0

| Item | Qty. | Part Number | Description |
|------|------|-------------|---|
| 1 | 1 | 00028822 | PUSH ARM WELDMENT |
| 2 | 1 | 00063018 | INNER ROD WELDMENT |
| 3 | 2 | 01130925 | SWIVEL CONNECTOR, CAST |
| 4 | 1 | 05035040 | SPRING COMPRESSION |
| 5 | 2 | 05022089 | FLAT HEAD PIN |
| 6 | 2 | 05022007 | PIN .25 X 2.5, COTTER, ZINC |
| 7 | 2 | 05010772 | BOLT, .750-10 X 4, G8, HHCS, ZINC |
| 8 | 2 | 05020849 | NUT, .75-10, GC, TOP LOCK, C&W |
| 9 | 1 | 05010702 | BOLT, .5-13 UNC X 4.5 |
| 10 | 1 | 05020847 | NUT, .5-10, GC, TOPLOCK, C&W |
| 11 | 2 | 05021191 | BUSHING, MACH, 1.88 X 1.25 X 14GA, ZINC |

**00063034 CROSS TUBE, RR, JR WING
4.0" X 6.0" X 66.00"**



**00000193 SIDE PLATE, 4X6 OPENING
12" X 36"**

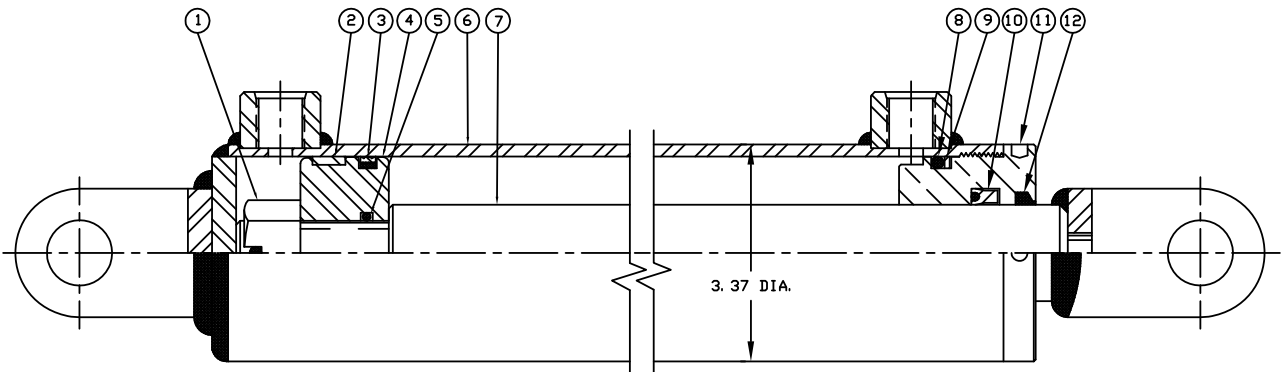


00043524 MTG HDW KIT, JR WING

| Item | Qty. | Part Number | Description |
|-------------|-------------|--------------------|--------------------------------|
| 1 | 2 | 05051418 | PIPE BALL END |
| 2 | 1 | 05051395 | CARDBOARD,BOX,12"x8"x7" FOL |
| 3 | 8 | 00156141 | SUPPORT, WING, JR |
| 4 | 1 | 05052746 | GRAB HOOK,.375",FORGED |
| 5 | 24 | 05010741 | BOLT .625-11 x 2.50 G8 HHCS ZC |
| 6 | 2 | 05010753 | BOLT .625-11 x 7.00 G8 HHCS ZC |
| 7 | 1 | 05021318 | WASHER 1.500 FLAT ZC |
| 8 | 26 | 05020837 | NUT .625-11 GC TOPLOCK C&W |
| 9 | 1 | 05022007 | COTTER PIN, .250x2.500 |
| 10 | 1 | 00030114 | CHAIN,HIGH TEST,.375x16.750 |
| 11 | 2 | 00067926 | MTG ANGLE,PIPE BRACE |
| 12 | 52 | 05021007 | WASHER .625 FLAT MIL-CARB ZINC |

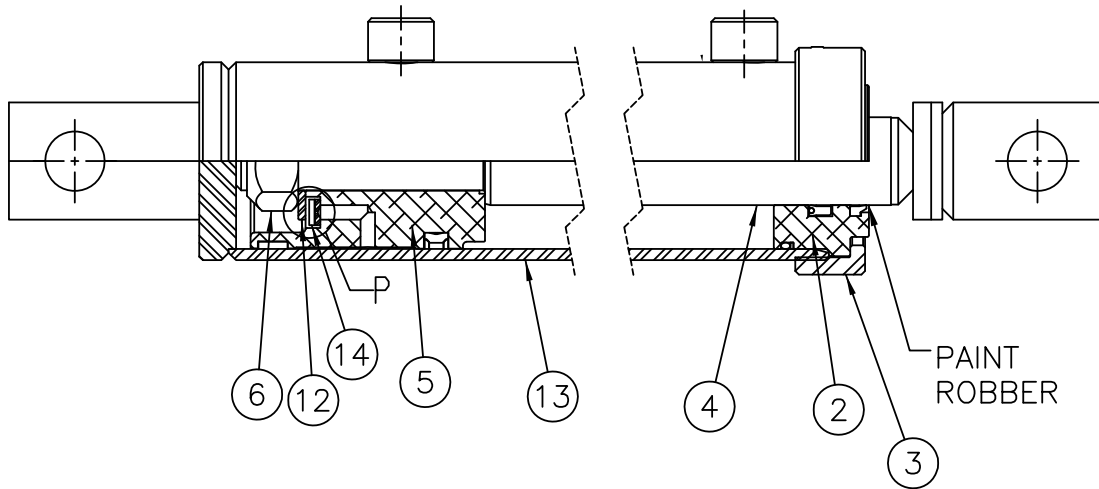
05002502 CYLINDER, 3X10 DA

| <i>BEST METAL</i> | ITEM | QTY | PART # | DESCRIPTION |
|-------------------|------|-----|----------|-------------------|
| | 1 | 1 | 05002854 | SLOTTED NUT |
| | 2 | 1 | --- | WEAR RING |
| | 3 | 1 | --- | PISTON ALUM |
| | 4 | 1 | 05002852 | PISTON STEEL |
| | 5 | 1 | --- | O-RING |
| | 6 | 1 | --- | JACKET ASSEMBLY |
| | 7 | 1 | --- | PISTON ROD |
| | 8 | 1 | --- | O-RING |
| | 9 | 1 | --- | BACKUP WASHER |
| | 10 | 1 | --- | POLY PAK |
| | 11 | 1 | 05002899 | GLAND NUT |
| | 12 | 1 | --- | ROD WIPER |
| | | | 05003188 | SEAL KIT |
| | | | 05002873 | GLAND NUT W/ SEAL |
| | | | 05003323 | PIN COTTER PIN |



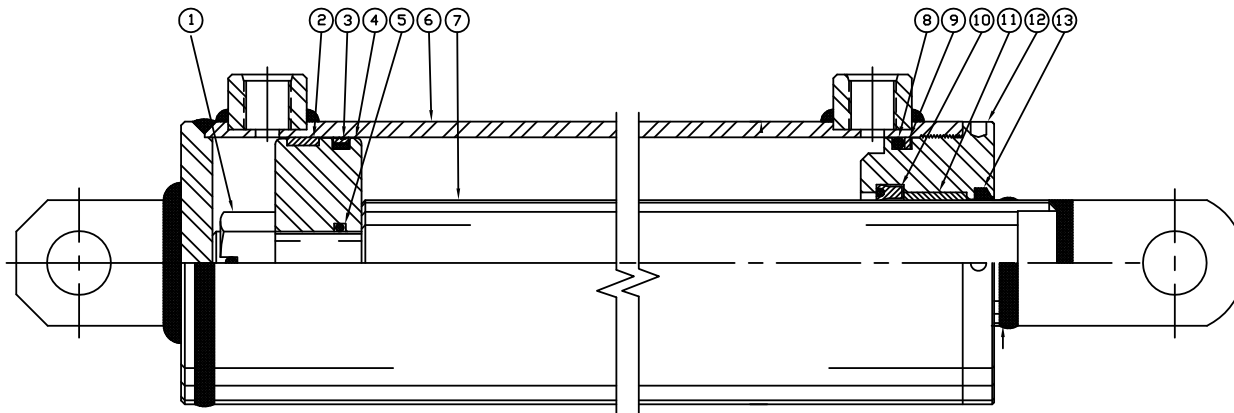
05002897 CYLINDER, 3x10, DA DECEL

| BOBALEE | ITEM | QTY | PART # | DESCRIPTION |
|---------|------|-----|----------|---------------|
| | 1 | 1 | --- | HEAD |
| | 2 | 1 | --- | THREAD CAP |
| | 3 | 1 | --- | SET SCREW |
| | 4 | 1 | 05002915 | ROD WELDMENT |
| | 5 | 1 | --- | PISTON |
| | 6 | 1 | --- | LOCK NUT |
| | 7 | 2 | --- | CLEVIS PIN |
| | 8 | 4 | --- | PIN CLIP |
| | 9 | 2 | --- | #8 SAE PLUG |
| | 10 | | --- | WHITE PRIMER |
| | 11 | | --- | BLACK PRIMER |
| | 12 | 1 | --- | PISTON WASHER |
| | 13 | 1 | 05002917 | CASE WELDMENT |
| | 14 | 1 | --- | ORIFICE |
| | 15 | 1 | --- | PAINT ROBBER |
| | 16 | 1 | 05002916 | SEAL KIT |



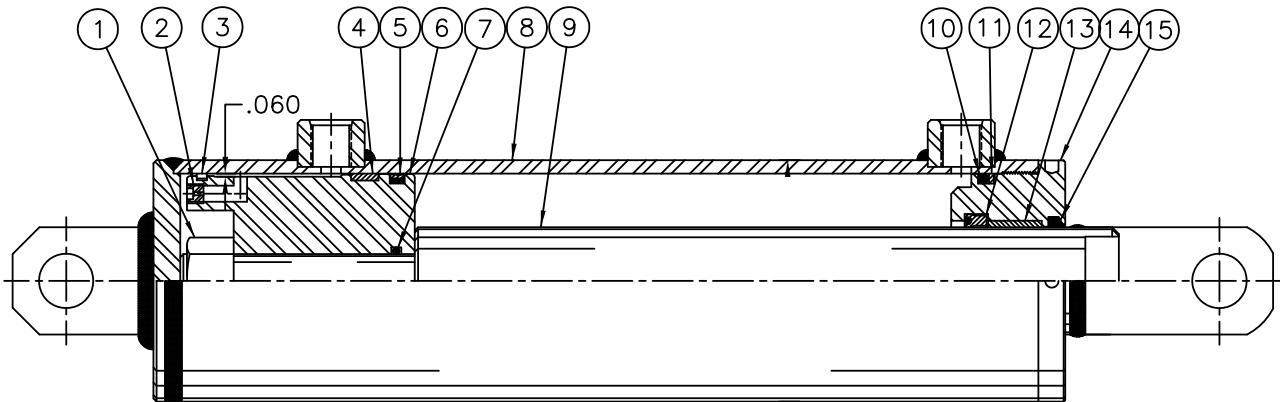
05002952 CYLINDER, 4x10, DA, NITRIDED

| <i>BEST METAL</i> | ITEM | QTY | PART # | DESCRIPTION |
|-------------------|------|-----|----------|-----------------|
| | 1 | 1 | 05002854 | SLOTTED NUT |
| | 2 | 1 | 05002955 | WEAR RING |
| | 3 | 1 | 05002956 | PSP SEAL |
| | 4 | 1 | 05002856 | PISTON |
| | 5 | 1 | 05002957 | O-RING |
| | 6 | 1 | --- | JACKET ASSEMBLY |
| | 7 | 1 | --- | PISTON ROD |
| | 8 | 1 | 05002958 | O-RING |
| | 9 | 1 | 05002959 | BACKUP WASHER |
| | 10 | 1 | 05002525 | POLY PAK |
| | 11 | 1 | --- | BRONZE LINER |
| | 12 | 1 | 05002930 | HEADSTOCK |
| | 13 | 1 | 05002527 | ROD WIPER |
| | | 1 | 05002855 | SEAL KIT |



05003062 CYLINDER, 4x10, DA, DECEL

| <i>BEST METAL</i> | ITEM | QTY | PART # | DESCRIPTION |
|-------------------|------|-----|----------|---------------------------|
| | 1 | 1 | --- | LOCK NUT |
| | 2 | 1 | --- | .125 NPT BRASS LEVEL SEAL |
| | 3 | 1 | --- | CAST IRON RING |
| | 4 | 1 | 05002955 | WEAR RING |
| | 5 | 1 | 05002956 | PSP SEAL |
| | 6 | 1 | --- | PISTON (STEEL) |
| | 7 | 1 | 05002520 | O-RING |
| | 8 | 1 | --- | JACKET ASSEMBLY |
| | 9 | 1 | --- | PISTON ROD |
| | 10 | 1 | 05002958 | O-RING |
| | 11 | 1 | 05002959 | BACKUP WASHER |
| | 12 | 1 | 05002525 | POLY PAK |
| | 13 | 1 | --- | BRONZE LINER |
| | 14 | 1 | 05002930 | HEAD STOCK |
| | 15 | 1 | 05002527 | ROD WIPER |
| | 16 | | 05002855 | SEAL KIT |

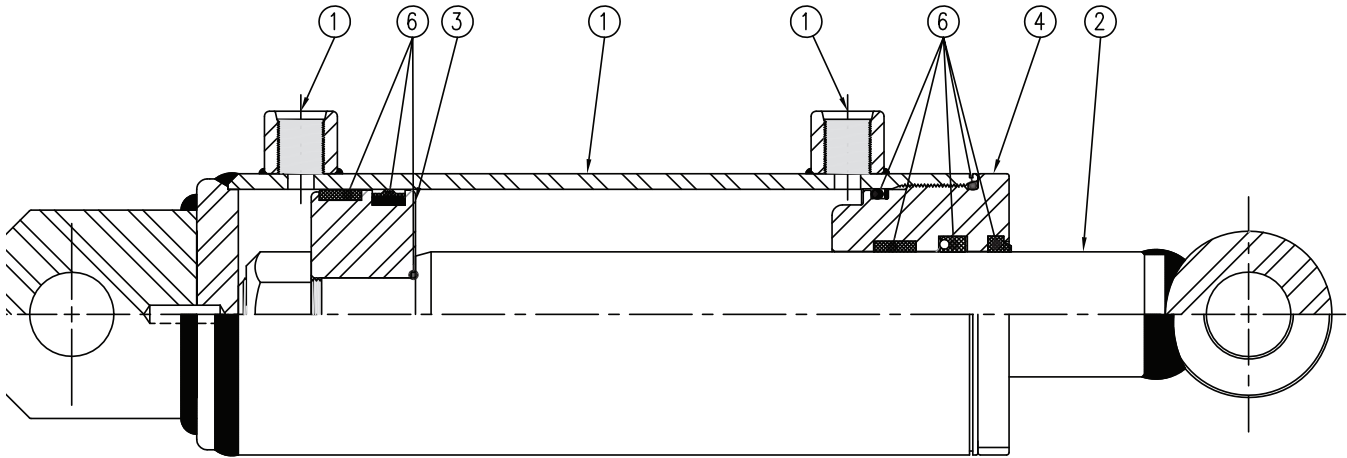


05003214 3" x 5", DA CYLINDER

DIREKT FORCE

VENDOR #73115
(Stamped On Cylinder)

| ITEM | QTY | MTE PN# | DESCRIPTION |
|------|-----|----------|---------------|
| 1 | 1 | 05003298 | BODY SUB ASSY |
| 2 | 1 | 05003299 | ROD ASSY |
| 3 | 1 | 05003300 | PISTON |
| 4 | 1 | 05003301 | GLAND |
| 5 | AR | 05003302 | HARDWARE KIT |
| 6 | AR | 05003303 | SEAL KIT |

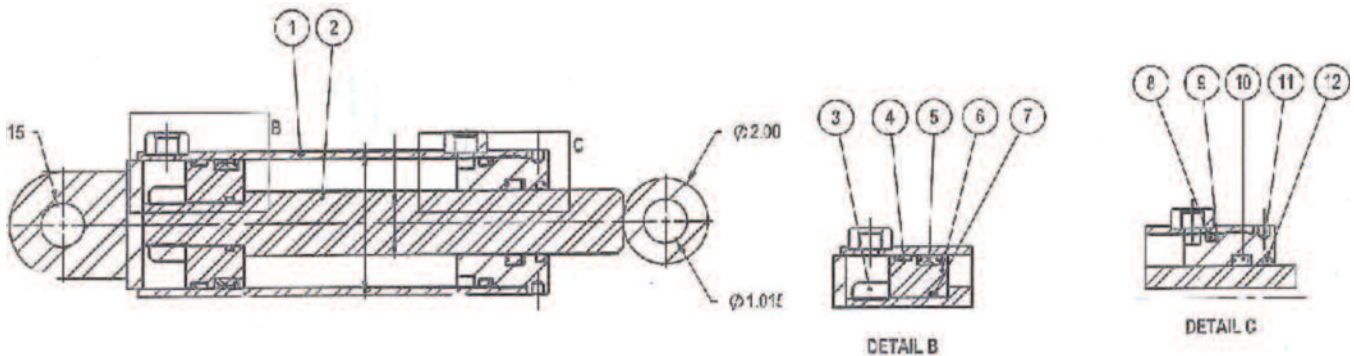


BEST METAL

VENDOR #33285
(Stamped On Cylinder)

| ITEM | QTY | MTE PN# | DESCRIPTION |
|------|-----|----------|----------------------------|
| 1 | 1 | 05003304 | JACKET ASSEMBLY |
| 2 | 1 | 05003305 | ROD ASSEMBLY |
| 3 | 1 | 05003306 | FASTENER, CONICAL TOP LOCK |
| 4 | 1 | | WEAR RING |
| 5 | 1 | | DYNAMIC SEAL |
| 6 | 1 | 05003307 | PISTON, WEAR RING |
| 7 | 1 | | STATIC SEAL, O-RING |
| 8 | 1 | | STATIC SEAL O-RING |
| 9 | 1 | | BACK-UP RING, 90D NITRILE |
| 10 | 1 | | DYNAMIC SEAL, POLY PAK |
| 11 | 1 | | GLAND NUT, INTERNAL |
| 12 | 1 | | ROD WIPER |

ITEMS #4,5,7,8,9,10,11,12 INCLUDED IN
SEAL KIT PN# 05003308





**1051 West 7th Street
 Monroe, WI 53566
 608-328-8127 ~ Fax: 608-328-4278**

Warranty Policy Uninstalled Parts and Equipment Provided by Monroe Truck Equipment

Monroe Truck Equipment will provide the following limited warranty for a period of one year to the original purchaser of all uninstalled goods provided by Monroe Truck Equipment:

LIMITED WARRANTY: All goods provided by Monroe Truck Equipment (MTE) will be free from defects in material and workmanship for a period of one year from the date of purchase by the original purchaser. This limited warranty shall be the sole and exclusive remedy for any such product found to be defective. This limited warranty supercedes all previous warranties and is exclusive and in lieu of all other warranties, whether expressed or implied.

This limited warranty applies only to parts or accessories manufactured by MTE and/or provided by same. Except with respect to title, this limited warranty does not pertain to parts or accessories not manufactured and/or provided by MTE, regardless of whether such parts or accessories were selected and/or recommended by MTE. MTE will, as a service to the buyer, pass on any warranties received from the original manufacturer of MTE provided parts and/or accessories.

MTE will not under any circumstances be liable for any incidental or consequential damages whether in tort, contract, or otherwise, for any bodily injury, death, property damage, loss of use, or loss of income resulting from or in any way arising out of any goods provided by MTE, or their sale, use, or manufacture.

Any warranty claim deemed to be arising from the result of misuse, abuse, neglect, accident, improper installation, lack of maintenance, act of war (whether declared or otherwise), or act of God will be denied. Any repair or modification by the buyer or any third party, without the prior written consent of MTE, will void any possible warranty compensation. Any damage deemed to be the result of abnormal operation will not be compensated by this warranty.

Normal or special maintenance items such as fuels, fluids, tires/belts, hoses, filters, air cleaners, light bulbs, and any other items subject to normal wear and tear that are supplied in connection with goods provided by MTE are not allowed under this warranty.

All engines, pumps, cylinders, valves, and motors are warranted by their manufacturer and not by Monroe Truck Equipment. The manufacturer's warranty will apply to these parts. Electrical and hydraulic components are not to be disassembled without the express written consent of MTE. Any disassembly of MTE provided components without prior authorization will void the applicable warranty.

Monroe Truck Equipment shall be the sole and final determining authority as it applies to the administration of this warranty policy. Purchaser acknowledges receipt of Monroe Truck Equipment Warranty Policy and agrees to be bound by same.



GLOBAL SOLUTIONS
 ARMORED VEHICLES ~ SPORT TRUCK CONVERSIONS
 MUNICIPAL SNOW & ICE CONTROL ~ FIRE APPARATUS
 PICKUP TRUCK ACCESSORIES ~ TRUCK EQUIPMENT/MODIFICATIONS





**1051 West 7th Street
 Monroe, WI 53566
 608-328-8127 ~ Fax: 608-328-4278**

Any and all warranty claims must be forwarded to MTE within 10 days of defect discovery. A copy of the original Monroe Truck Equipment invoice as well as the manufacturer's model number, serial number, and date of installation must accompany all correspondence regarding said claims. MTE will, at their option, choose whether to repair or replace the defective part unless otherwise specified by the original manufacturer of said part.

Procedures for Warranty Claims Notification

For submission of any warranty claim please contact Monroe Truck Equipment – Warranty Department at 800-356-8134

The following documentation will be needed when you call for initial warranty authorization:

1. A copy of the original MTE invoice.
2. Make, Model, and VIN or Serial Number of the equipment involved.
3. Part number and serial number of the part in question.
4. A complete description of the problem.

The following must accompany any claims submitted to Monroe Truck Equipment:

1. Documented photographs of any physical damage.
2. Inspection notes by MTE personnel or MTE authorized 3rd party.
3. Authorization number issued by Monroe Truck Equipment – Warranty Department.

Defective parts must be returned to Monroe Truck Equipment (freight prepaid) within 30 days of issuance of Authorization Number.

Monroe Truck Equipment reserves the right to void any warranty for failure to comply with Monroe Truck Equipment Warranty Policy.

This policy is effective October 11, 2012 _____