



---

# Parts & Service Manual for MONROE PIN HITCHES



Monroe Snow & Ice Control  
1051 W. 7th Street • Monroe, WI 53566  
USA: 877-834-9049 • Fax: 608-329-8488  
[www.monroetruck.com](http://www.monroetruck.com)

05090293-4  
12/2/2013



# Table of Contents

---

General Information	4
How to Order Parts	4
Return Policy	4
Safety Instructions	5
Maintenance Instructions	6
Hydraulic Schematics	7
Installation Instructions	???
Replacement Parts	15
Warranty	45

## General Information

---

- Use only Monroe Truck Equipment O.E.M. replacement parts. Failure to do so will void the warranty.
- Location descriptions are noted in direction of travel (i.e. front, rear, left and right).
- Delivery of replacement parts is subject to our sales delivery terms.
- Replacement parts listed in this manual reflect the most common items for this product. If you do not find the part you require, please call your distributor.
- Monroe Truck Equipment reserves the right to make revisions or alterations to the parts manual at any time.

## How to Order Parts

---

To order or inquire about replacement parts, please contact the distributor or store that the product was purchased through. To speed the information flow, please have the following information available:

- Model Number
- Serial Number
- Part Number and/or Description of the Part
- Quantity Needed

For further information about Monroe Truck Equipment replacement parts, please call 877-834-9049.

## Return Policy

---

Merchandise returned to Monroe Truck Equipment must have a Warranty Service Request (WSR) form filled out completely and signed by authorized personnel.

To get your WSR form for whole goods, call Snow & Ice Sales at 800-880-0109.

To get your WSR form for replacement parts, call Warranty at 877-834-9049..

All returned items are subject to a 15% restocking fee and ***must be sent freight pre-paid.***

# Safety Instructions

---

## **WARNING**

**Before working under the vehicle or around the spreader, shut off the truck engine and remove the key from the ignition. Prevent accidental startup and operation to avoid personal injury!**

- Read all installation, safety and maintenance instructions completely before operating this equipment
- Keep all personnel clear of moving parts while equipment is being operated.
- Do not operate equipment in need of maintenance! Repair immediately!
- While operating this equipment, use common sense, use caution, be alert and be safety-conscious.

**NOTE: Before installation of any hitch, or maintenance to hitch or truck, be sure to apply parking brake, chock the rear wheels and remove the key from the ignition switch.**



## Safety Decal Signal Words

---

 **DANGER**

**DANGER (Red)** indicates an imminently hazardous situation which, if not avoided, will result in death or serious injury.

 **WARNING**

**WARNING (Orange)** indicates a potentially hazardous situation which, if not avoided, could result in death or serious injury.

 **CAUTION**

**CAUTION (Yellow)** indicates a potentially hazardous situation which, if not avoided, may result in minor or moderate injury.

**CAUTION**

**CAUTION (Yellow)** used without the safety risk alert symbol indicates a potentially hazardous situation which, if not avoided, may result in property damage.

# Maintenance Instructions

---

## **WARNING**

***Before working under the vehicle or around the spreader, shut off the truck engine and remove the key from the ignition. Prevent accidental startup and operation to avoid personal injury!***

### **In Season:**

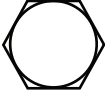


- Check for loose bolts and nuts daily, and re-torque before use. (Failure to inspect equipment on a daily basis may seriously affect safety and/or efficiency.)
- Lubricate all grease fittings every ten hours of normal use and more frequently under heavy use. Locations are shown in parts breakdowns of specific models.
- Check all hydraulic fittings for tightness on a regular basis.
- Due to the nature of use and environment this equipment is operating in, damage and wear may occur at anytime. Therefore, Monroe Truck Equipment recommends the end user establish and follow a daily inspection routine before using this hitch.

### **Off Season: (If Applicable)**

- Use care when disconnecting hydraulic lines to assure that no dirt or foreign objects enter the hydraulic system. Use caps to cover hydraulic hose fittings and insert plugs into hydraulic ports.
- Hydraulic cylinders should be fully retracted when stored during the off season to prevent damage or corrosion. The remaining exposed shaft surface should be coated with a thick grease to prevent corrosion, which must be removed before returning to regular service.
- Check mounting bolts for wear and/or damaged threads and replace before re-mounting.
- Lubricate all grease fittings and pivot points prior to storage.

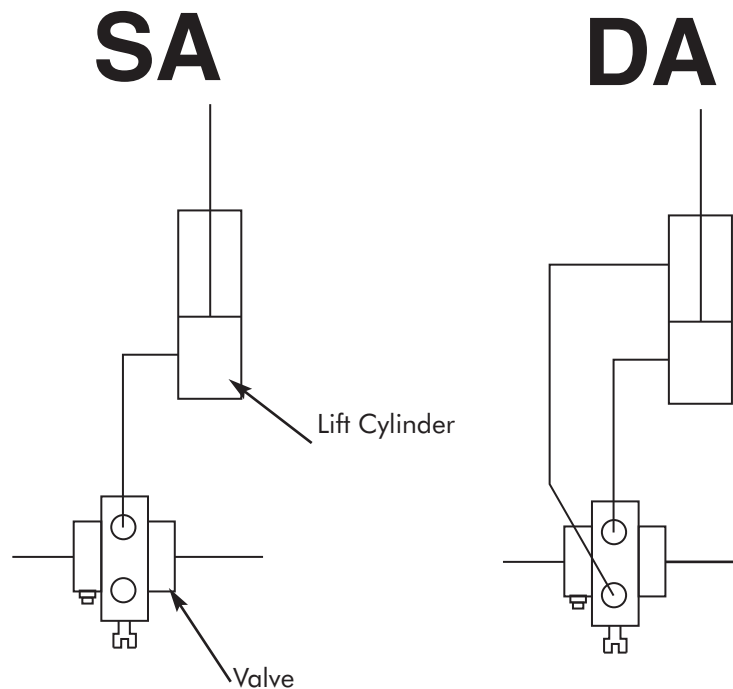
## **Torque Chart**

---

SIZE	 GRADE 2	 GRADE 5	 GRADE 8
1/4-20	50 IN-LBS	75 IN-LBS	9 FT-LBS
3/8-16	15 FT-LBS	23 FT-LBS	35 FT-LBS
1/2-13	35 FT-LBS	55 FT-LBS	80 FT-LBS
5/8-11	75 FT-LBS	110 FT-LBS	170 FT-LBS
3/4-10	130 FT-LBS	200 FT-LBS	280 FT-LBS
1-8	190 FT-LBS	480 FT-LBS	680 FT-LBS
1 1/4-7	380 FT-LBS	840 FT-LBS	1,360 FT-LBS

# Hydraulic Schematic

---



***Installation of a manifold and quick connect fittings is recommended for easy removal of hitch.***

## Truck Requirements

---

- The truck intended for use with this Monroe Hitch must have an extended frame to allow space for front mounted hydraulic pump (if required), hitch mounting plates etc. Frame extensions should be as thick as the truck frame and welded in place. They should extend approximately 18" - 22" from the front of the truck and can be trimmed if there is any excess.
- Spring modification and/or airbags may be required to carry additional weight (not included). Options should be considered and any parts needed should be purchased prior to installation of hitch.
- GVW and application must be considered prior to hitch installation.

# Installation Instructions

These mounting instructions are intended as a guide to aid you in the installation of your **Monroe Hitch**. All dimensions noted in the instructions are approximate and may vary due to: make and model of chassis, tire size, type of suspension, customer preference, and interference caused by immovable attachments.

**Monroe Truck Equipment** assumes no responsibility for improper installation, unless installed at a **Monroe Truck Equipment** location. Mounting location should be discussed by the end-user and the installer prior to installation in order to achieve the best possible installation.

**\*\*NOTE: Hitch mounting height is determined by plow push height.**

1. Remove Front Bumper from truck.
2. Cover the cab with a fire resistant tarp to protect it from sparks. If needed, trim the front of the truck frame to keep the hitch close to the truck and/or hydraulic pump. Use a cutting torch and keep the cut as square as possible. Clean all rough edges with a grinder.
3. If a Monroe brace kit is used: Clamp the mounting angle  $\frac{3}{8}$ " x 4" x 6" x 37" provided to the truck frame and measure to check for squareness.
4. Clamp mounting plates to each side of the frame so that they match up to the mounting angle. Tack weld the mounting plates to the mounting angle. **(Fig. 1)** Mounting plates are not included with hitch or brace kit.  $\frac{1}{2}$ " plate is suggested.
5. Drill (4) $1\frac{1}{2}$ " holes or (3) $2\frac{1}{2}$ " holes through tow hooks (if required), mounting plates and truck frame. **(Fig. 1) NOTE** ---Apply rust inhibitor or paint to drilled holes.
6. Using a proper lifting device, lift the hitch to the correct height determined by push height of plow and clamp it to the mounting angle. Recheck the height on both sides of the hitch. **NOTE** ---Be sure to center and level the hitch to the truck frame and not to the ground.



Fig. 1



Fig. 2



# Installation Instructions

---

7. If a tilting hitch is being installed, wedge a screwdriver on one side between the fixed portion of the hitch and the tilting portion. This will ensure clearance between the two portions and allow proper function of the hitch. **(Fig. 2)** Maintain a  $\frac{1}{8}$ " gap between portions.
8. Tack weld the hitch to the mounting angle and recheck all measurements before welding. **NOTE**---*Be sure surfaces being welded are cleaned of paint, grease and dirt.*
9. Remove the hitch and mounting assembly and weld. Mounting plates are not welded on the inside.
10. Re-install hitch assembly and tow hooks. Tighten all bolts to specifications. **(Fig. 3)**  
**NOTE** ---*Always use grade 8 bolts and nuts and hardened washers when fastening to a truck frame.*
11. If installing a tilting hitch (sometimes the hood has to be tied back some so hitch is not so heavy to tilt), tilt engine hood forward and determine the amount of clearance needed between the hood and the hitch. Weld a short piece of heavy duty  $\frac{3}{8}$ " chain (6-10 links) (Not Furnished) to the fixed portion of the hitch and a  $\frac{1}{2}$ " bolt to the tilting section. Fasten the chain with a washer and nut. **(Fig. 4)**
12. Coat the tilting pins with thin layer of anti-seize lubricant.
13. Cut the center section out of the front bumper. The amount removed should be equal to the width of the hitch mounting plates. Attach the two bumpers to the hitch and tack weld them in place, or fabricate mounting brackets. Check measurements and appearance. The bumper should be level to the truck frame, not the ground. When satisfied with fit weld or bolt the bumper sections in place. **(Fig. 5 & 6)**
- 14 . Touch up with paint.

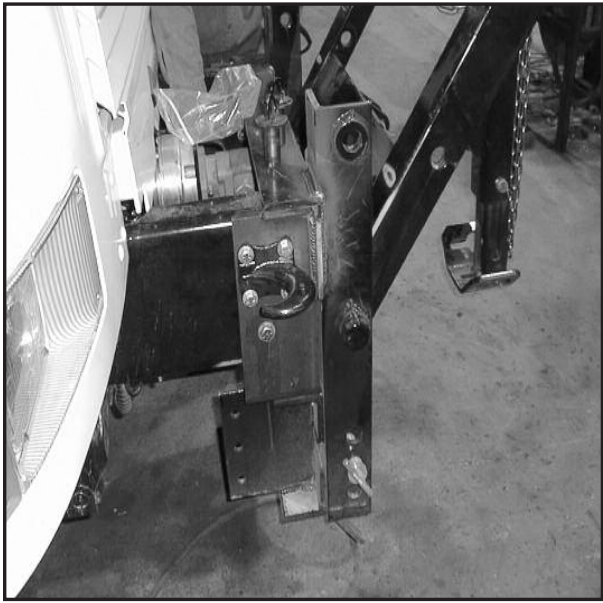


Fig. 3



Fig. 4



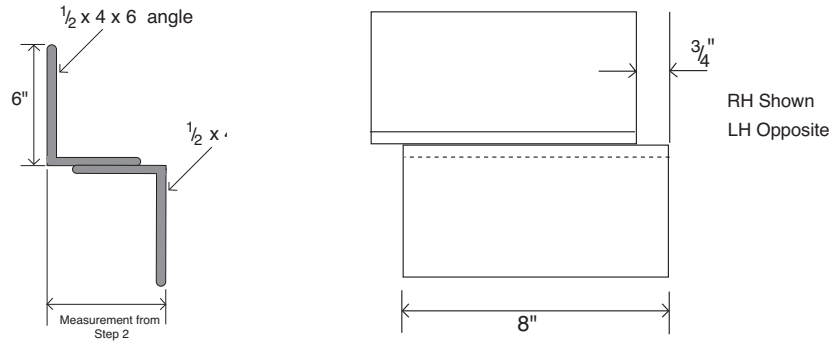
Fig. 5



Fig. 6

# Installation Instructions for MC50 Kit

1. Chock the rear wheels and lift the front wheels with a floor jack. Place two heavy duty jack stands under the front axle and remove the front wheels.
2. To ensure proper placement of the frame mounting angles, measure from the outside of the truck frame to the inside of the suspension U-bolts. Add  $1\frac{1}{2}$ " to that measurement. This allows clearance between the U-bolts and the frame mounts. Fit provided mounting angles together as shown in the following diagram and weld completely.

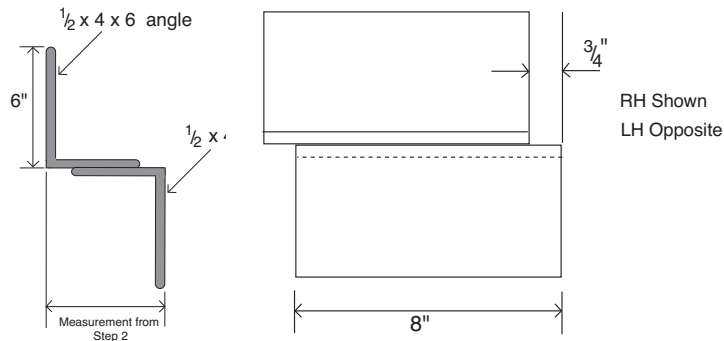


3. Clamp the frame mounting angles to the frame above the front axle. Angles must be located equal on both sides. Drill (3)  $2\frac{1}{32}$ " holes through each frame mounting angles and the truck frame. Some notching of the mounting angles may be needed to allow air or brake lines to pass through the frame. Hole location may depend on the shape of the mounting angles after notching.  
**NOTE** --When drilling use caution to avoid any hydraulic, air or brake lines on the inside of the truck frame. Apply rust inhibitor or paint to drilled holes.
4. Attach each frame mounting angle to the truck frame using a minimum of (3)  $\frac{5}{8}$ " bolts, (6)  $\frac{5}{8}$ " hardened washers and (3)  $\frac{5}{8}$ " toplock nuts, not provided. Tighten bolts just until snug.  
**NOTE**--The length of the bolts will depend upon the thickness of the frame and components.
5. Cut a radius and drill a  $\frac{13}{16}$ " hole at one end of the thrust arm bar. Clamp the other end to the frame mounting angles above front axle. Fasten rounded end of the thrust arm to plates to be welded onto hitch (not included). Tack weld thrust arm bars to mounting angles and connector plates to hitch. If a Husting Hitch is being installed a pusher angle (this angle should be used on most hitches with pusharms),  $\frac{1}{2}$ " x 3" x 4" x 37" L (not included, may vary) must be welded on to the hitch.
6. Disassemble and weld complete. **NOTE** -- Cross bracing and/or bar reinforcement may be required for service (not included) only with side plates.
7. Touch up pusharm assembly with paint and re-install on the truck. Tighten all bolts to specifications.
8. Put the wheels back on the truck and remove the jack stands and the rear wheel chocks. Torque wheels to spec.

**\*See page 62 for reference\***

# Installation Instructions for Universal Side Plates

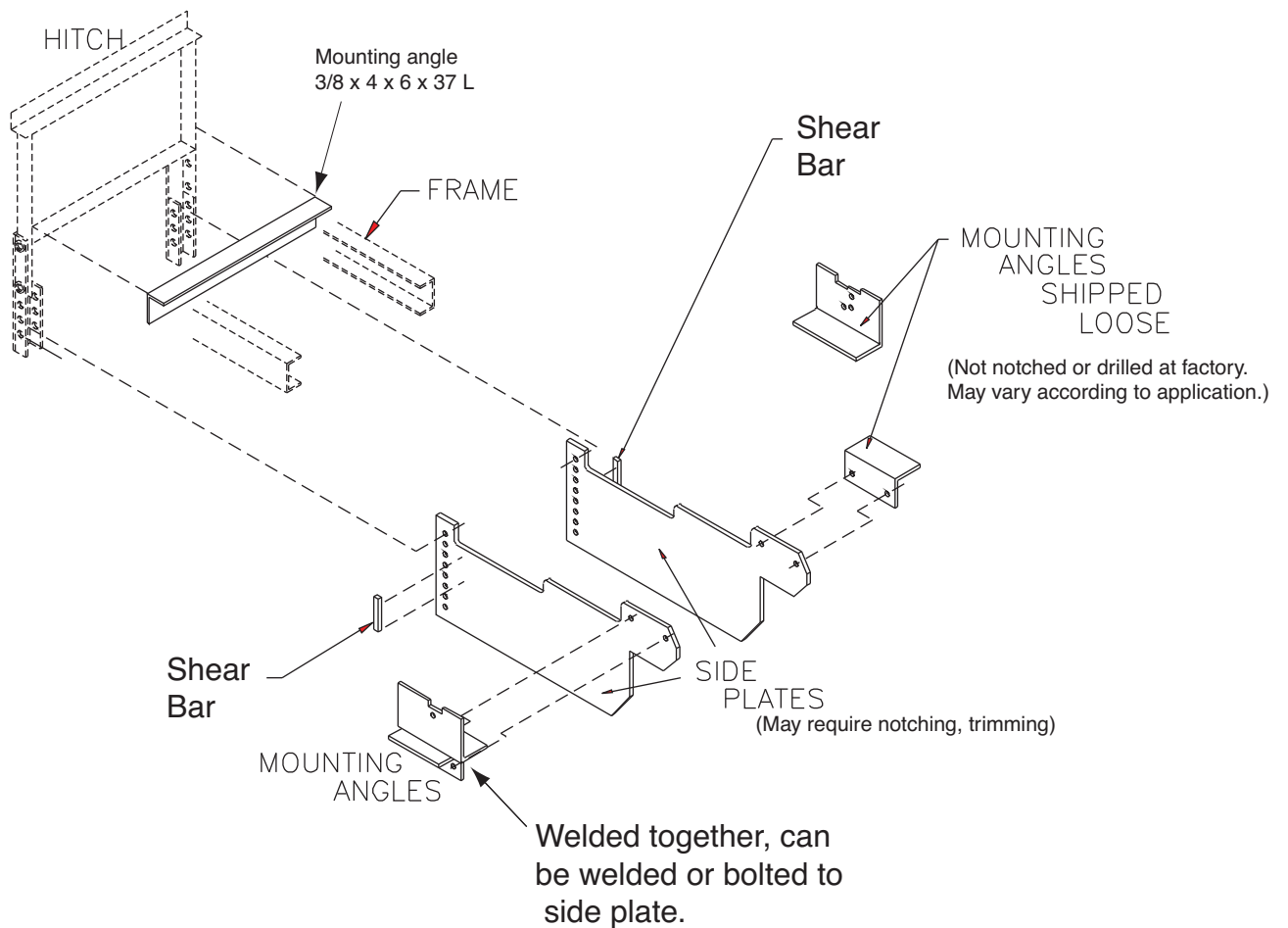
1. Remove the key from the ignition switch, chock the rear wheels and lift the front wheels with a floor jack. Place two heavy duty jack stands under the front axle and remove the front wheels.
2. To ensure proper placement of the frame mounting angles, measure from the outside of the truck frame to the inside of the suspension U-bolts. Add  $1\frac{1}{2}$ " to that measurement. This allows clearance between the U-bolts and the frame mounts. Fit provided mounting angles together as shown in the following diagram and weld completely.



3. Clamp the frame mounting angles to the frame above the front axle. Angles must be located equal on both sides. Drill (3)  $2\frac{1}{32}$ " holes through the frame mounting angles and the truck frame. Some notching of the mounting angles may be needed to allow air or brake lines to pass through the frame. Hole location may depend on the shape of the mounting angles after notching. **NOTE** -- When drilling use caution to avoid any hydraulic, air or brake lines on the inside of the truck frame. Apply rust inhibitor or paint to drilled holes.
4. Attach frame mounting angles to the truck frame using (3)  $\frac{5}{8}$ " bolts, (6)  $\frac{5}{8}$ " hardened washers and (3)  $\frac{5}{8}$ " toplock nuts (not included). Tighten bolts just until snug. **NOTE**--The length of the bolts will depend upon the thickness of the frame and components.
5. Measure from the rear of the frame mounting angles to the side plate mounting holes located at the bottom of the hitch. Some trimming of the side plates may be necessary to obtain a proper fit. Allow the side plate to extend past the mounting holes 2" --3". **NOTE** -- Always trim the side plate from the square end and re-drill any holes needed. -- The side plates can be welded or bolted to the frame mounting angles.
6. Position each side plate as it will be installed on the truck and clamp in place. Some trimming of the side plates may be needed to ensure clearance of the suspension, cross member, etc. Re-install side plates and recheck clearance.
7. Fasten the side plate to the hitch and tack weld, or bolt, the side plate to the mounting angles once they are in the proper position. Tack weld a shear bar ( $\frac{1}{2}$ " x 1" x 6" Bar) to each side plate directly behind the hitch mount plate. Remove the side plate and weld completely, omitting the front side of the reinforcing bar. **NOTE** -- Cross bracing and/or reinforcing bars may be needed for sever service (not included).

# Installation Instructions for Universal Side Plates

8. Touch up the side plate with paint and re-install on the truck. Tighten all bolts to specifications.
9. Side plates that are designed to attach to the outside of the truck frame are bolted directly to the hitch and truck frame. Some notching of the plates may be necessary to avoid the truck suspension or any components already attached to the truck frame. NOTE -- Cross bracing and/or reinforcing bars may be needed for severe service (not included).
10. Clamp side plates in place and drill holes as needed.  
Note - Apply rust inhibitor or paint to drilled holes.
11. Tighten all bolts to specifications.
12. Put the wheels back on the truck, remove the jack stands and the rear wheel chocks.  
Torque to spec.



# Installation Instructions for UBA Hitch

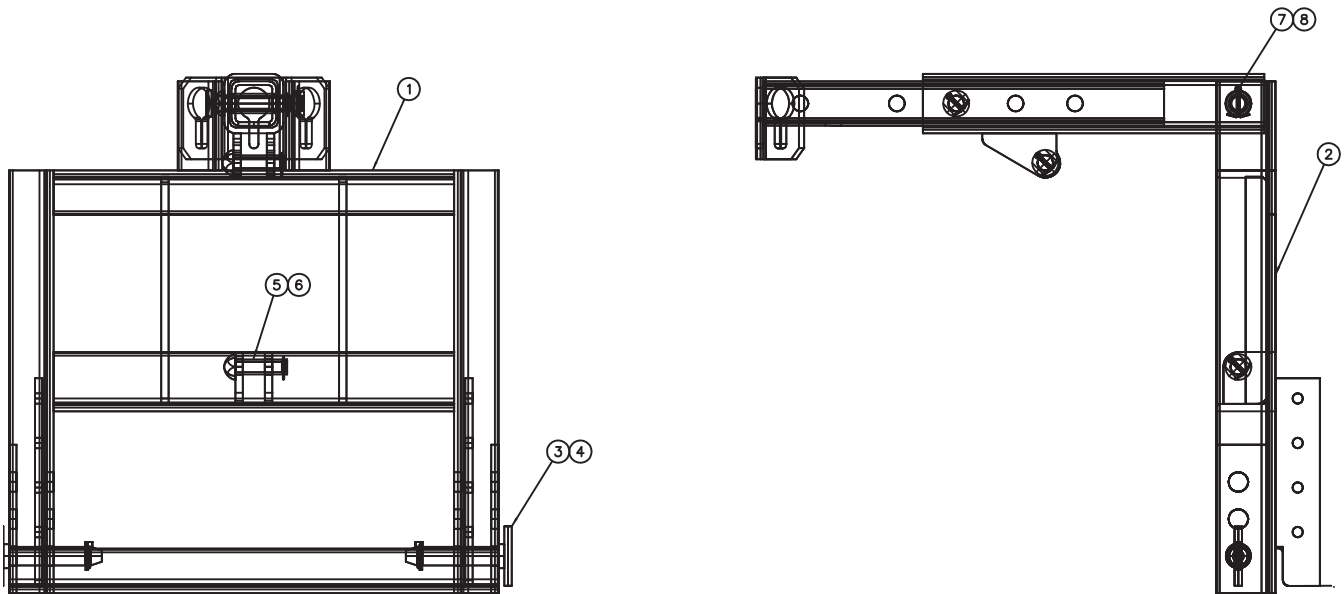
---

A UBA hitch assembly attaches directly to the vehicle frame and the front axle. The lower assembly takes place of side plates or pusharms.

To install a UBA hitch:

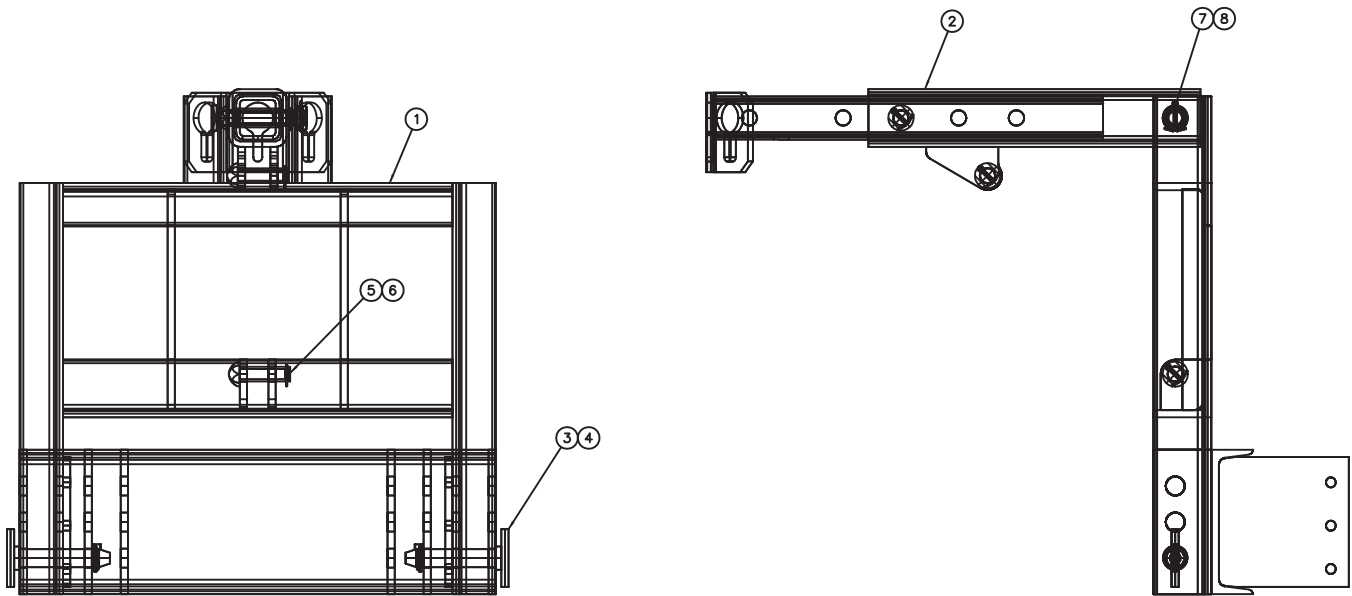
1. Remove front bumper from truck.
2. Cover the cab with a fire resistant tarp to protect it from sparks. If needed, trim the front of the truck frame to keep the hitch close to the truck and/or hydraulic pump. Use a cutting torch and keep the cut as square as possible. Clean all rough edges with a grinder.
3. If a Monroe brace kit is used; clamp the mounting angle  $\frac{3}{8} \times 4 \times 6 \times 37''$  provided to the truck frame and measure to check for squareness.
4. Clamp mounting plates to each side of the frame so that they match up to the mounting angle. Tack weld the mounting plates to the mounting angle. **(Fig. 1) Page 8** Mounting plates are not included with hitch.  $\frac{1}{2}''$  plate is suggested.
5. Drill (4)  $1\frac{1}{32}''$  holes or (3)  $2\frac{1}{32}''$  holes through tow hooks (if required), mounting plates and truck frame. **(Fig. 1) Page 8 NOTE** ---Apply rust inhibitor or paint to drilled holes
6. Assemble the entire hitch assembly and attach it to the hitch mounting bracket and the front axle.
7. If a UBA hitch with axle bracket assembly (00025299, Page 53) is being installed be sure the axle bracket is installed correctly and tack weld the bracket together. Remove the bracket assembly from the front axle and weld. Touch up with paint and re-install.
8. If a UBA hitch with axle bracket assembly (00049015, Page 52) is being installed tighten the nuts on the assembly.
9. Tighten all bolts to specifications.
10. Cut the center section out of the front bumper. The amount removed should be equal to the width of the hitch mounting plates. Attach the two bumpers to the hitch and tack weld them in place. Check measurements and appearance. The bumper should be level to the truck frame, not the ground. When satisfied with fit, weld or bolt the bumper section in place. **(Fig. 5 & 6, Page 10)**
11. Touch up with paint.

**NOTE** -- Cross bracing and/or reinforcing bars may be needed for severe service (not included).



**00038278 HITCH, TP, PIN, 30.5, MC5000 LIFT ARM, LOW PROFILE**

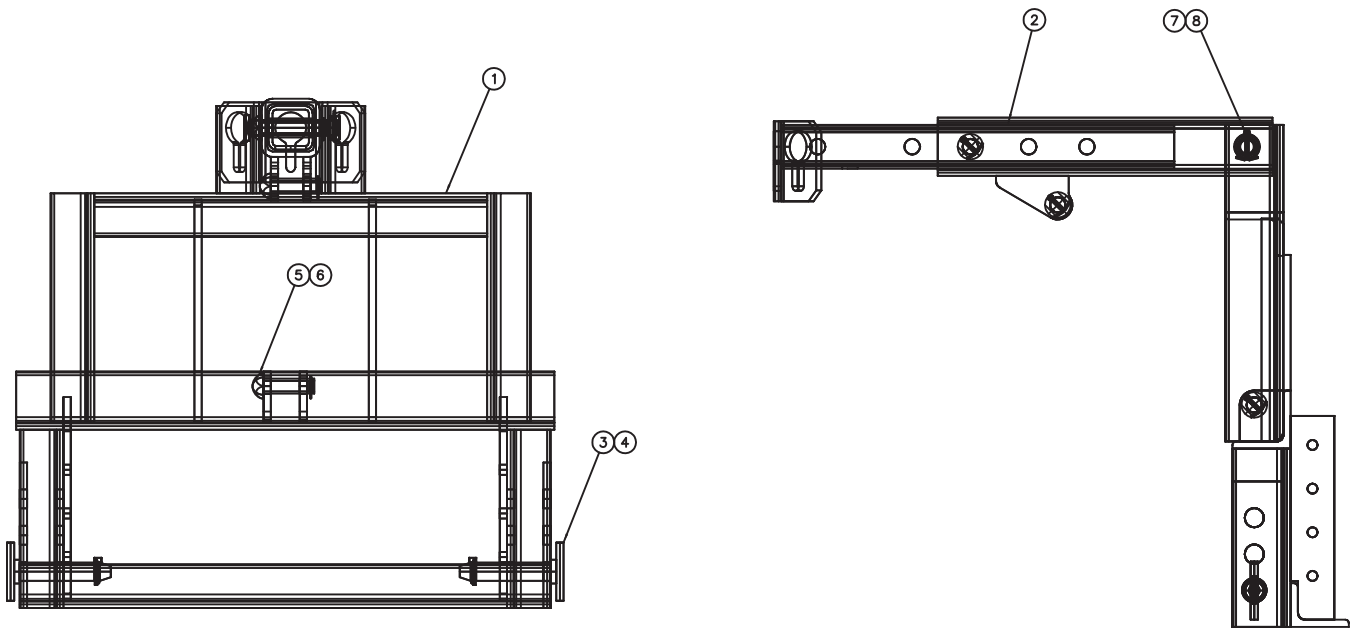
Item	Qty.	Part Number	Description
1	1	00023411	HITCH WELDMENT, TP, PIN, 30.5
2	1	00021373	LIFT ARM ASSEMBLY, MC7101 <i>See Page 31</i>
3	2	00080246	PIN, 1.25 X 6.25, T-BAR, HITCH
4	2	05022106	PIN, .188, LYNCH
5	1	05022000	HITCH PIN, 1" X 3.5"
6	1	05022019	PIN, .188 X 2, COTTER
7	1	05022031	PIN, .188 X 2.5, COTTER
8	1	050022076	PIN, 1 DIA X 6.0 RD HD, ZINC
9	1	05090293	MANUAL, HITCH, PIN HITCHES



**00038289 HITCH, TP, PIN, 21, MC5021 LIFT ARM, LOW PROFILE**

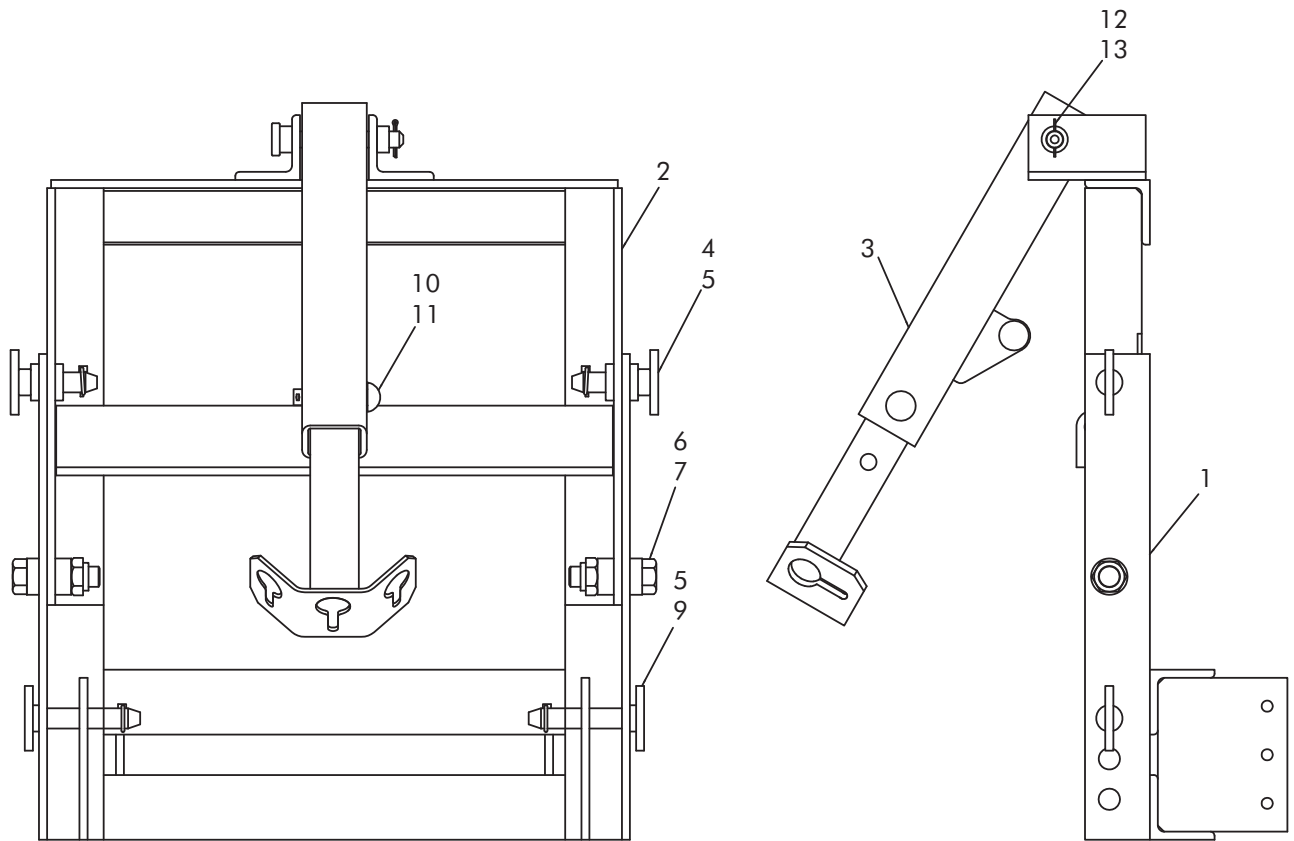
Item	Qty.	Part Number	Description
1	1	00038290	HITCH WELDMENT, TP, 5021
2	1	00021373	LIFT ARM ASSEMBLY, MC7101 <i>See Page 31</i>
3	2	00080246	PIN, 1.25 X 6.25 T-BAR
4	2	05022106	PIN, .188 LYNCH
5	1	050022000	PIN, 1 X 3.5, BUTTON HEAD, ZINC
6	1	05022019	PIN, .188 X 2, COTTER
7	1	05022031	PIN, .188 X 2.5, COTTER
8	1	05022076	PIN, 1 DIA X 6, RD HD ZINC
9	1	05090293	MANUAL, HITCH, PIN HITCHES





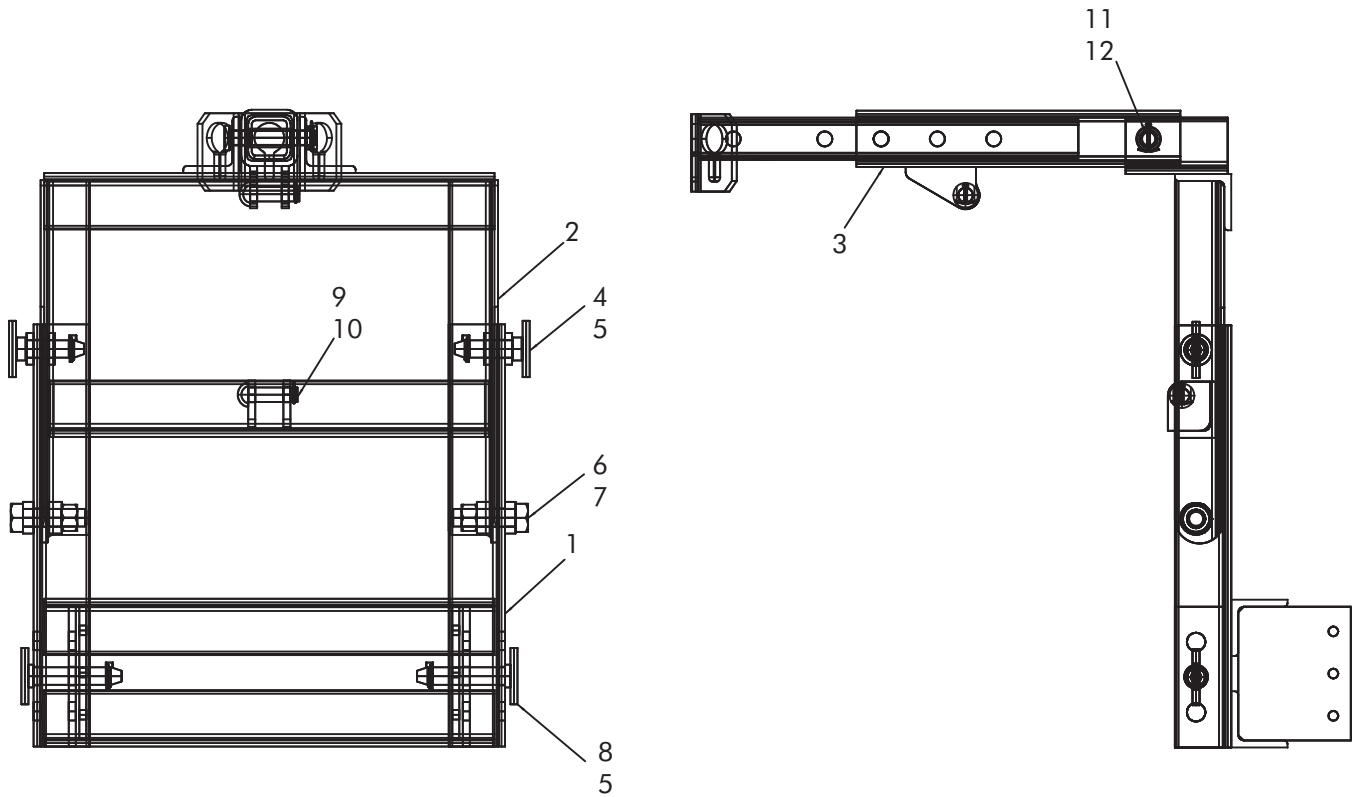
**00038292 HITCH, TP, PIN, 33.5, MC5033**

Item	Qty.	Part Number	Description
1	1	00038293	HITCH WELDMENT, TP, MC5021
2	1	00021373	LIFT ARM ASSEMBLY, MC7101 <i>See Page 31</i>
3	2	00080246	PIN, 1.25 X 6.25, T-BAR
4	2	05022106	PIN, .188 LYNCH
5	1	05022000	HITCH PIN, 1" X 3.5"
6	1	05022019	PIN, .188 X 2, COTTER
7	1	05022031	PIN, .188 X 2.50, COTTER
8	1	05022076	PIN, 1 DIA X 6, RD HD ZINC
9	1	05090293	MANUAL, HITCH, PIN HITCHES



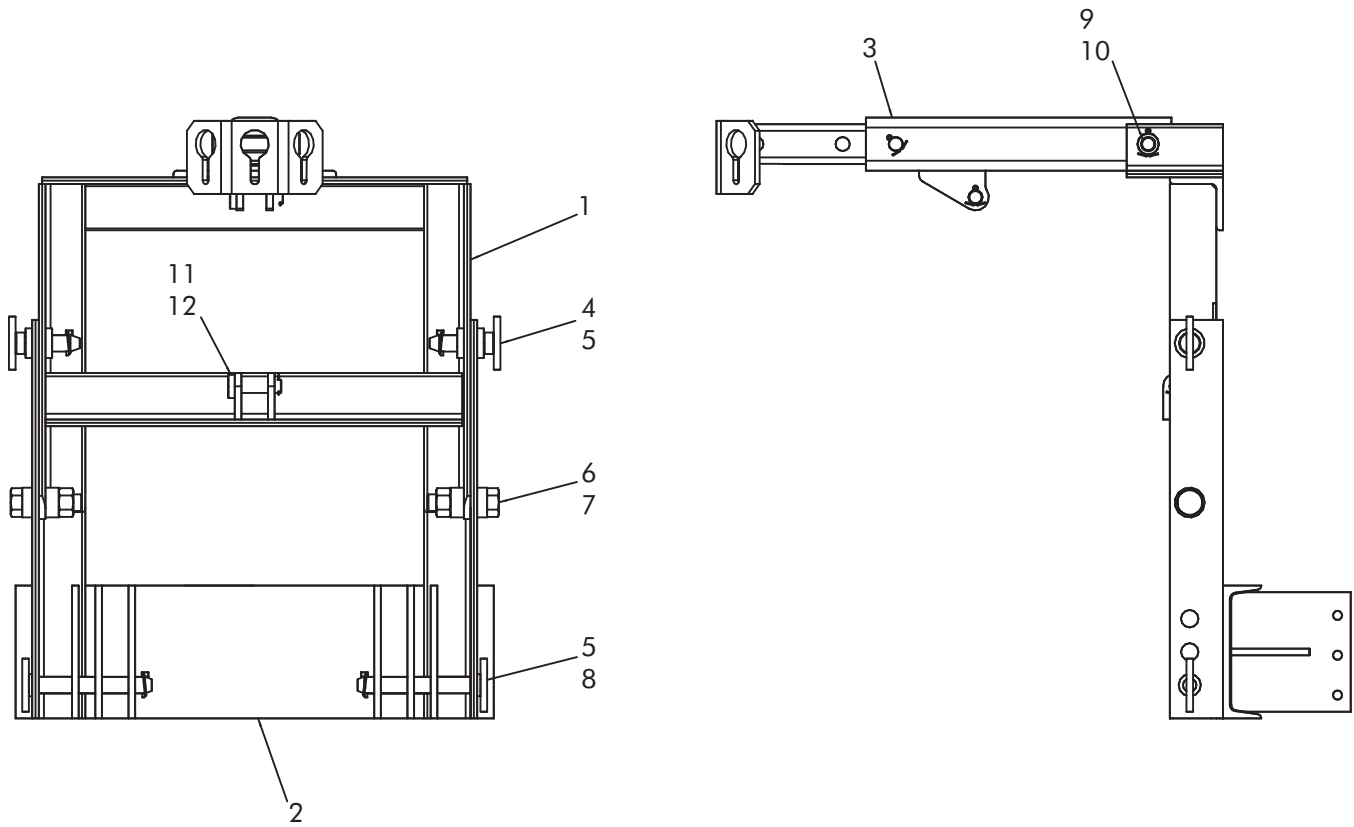
**00037497 HITCH, TP, PIN, 33.5, MC8001, TILT**

Item	Qty.	Part Number	Description
1	1	00010732	ASSEMBLY LOWER BODY, MC8001
2	1	00010735	ASSEMBLY UPPER BODY, MC8001
3	1	00021373	LIFT ARM ASSEMBLY, MC7101 <i>See Page 31</i>
4	2	00141752	PIN
5	4	05022106	PIN, .188 LYNCH
6	2	05010853	BOLT, 1.250-7 X 4.5, G8, HHCS, ZINC
7	2	05020835	NUT, 1.250-7, GC, TOP LOCK C&W
9	2	00080246	PIN, 1.25 X 6.25, T-BAR, HITCH
10	1	05022000	HITCH PIN, 1' X 3.5"
11	1	05022019	PIN, .188 X 2, COTTER
12	1	05022031	PIN, .188 X 2.5, COTTER
13	1	05022073	PIN, 1 DIA X 6 RD HD ZINC
14	1	05090293	MANUAL, HITCH, PIN HITCHES



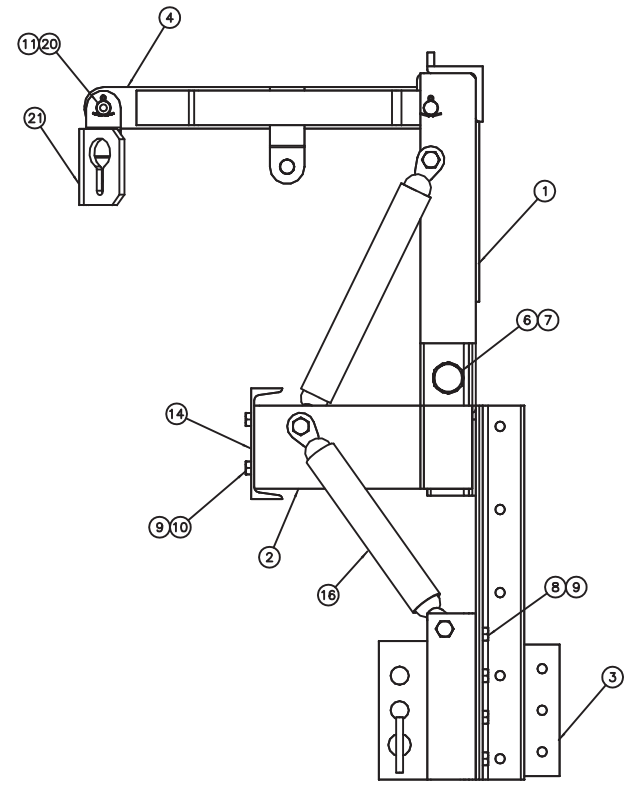
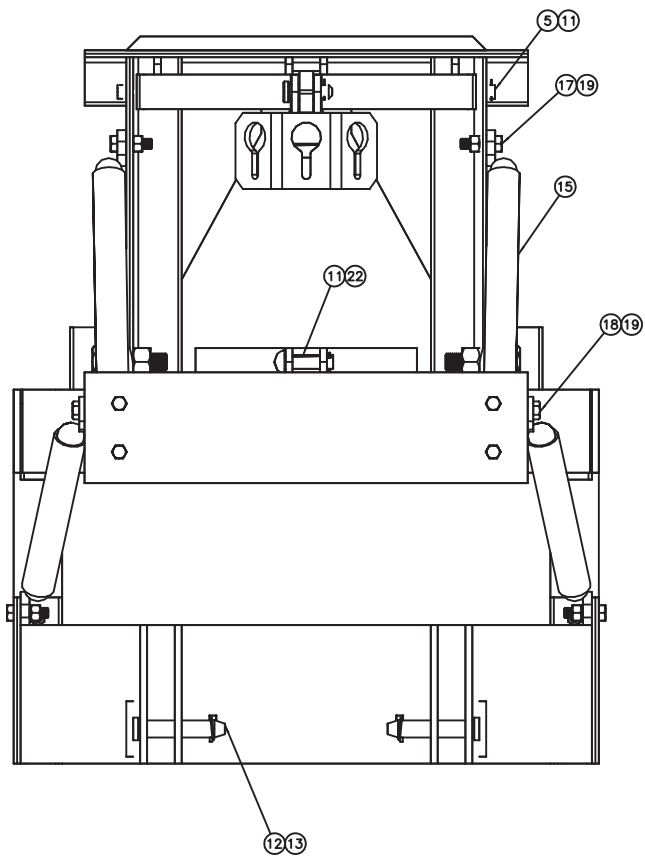
### 00010747 HITCH, TP, PIN 30.5, MC8002, TILT, LIFT ARM

Item	Qty.	Part Number	Description
1	1	00010748	HITCH, MC8002 LOWER BODY ASSEMBLY
2	1	00010749	BODY WELDMENT, UPPER, HITCH, MC8002
3	1	00021373	LIFT ARM ASSEMBLY, MC7101 <i>See Page 31</i>
4	2	00141752	PIN
5	4	05022106	PIN, .188 LYNCH
6	2	05010853	BOLT, 1.250-7 X 4.50, G8, HHCS, ZINC
7	2	05020835	NUT, 1.250-7, GC, TOP LOCK, C&W
8	2	00080246	PIN, 1.25 X 6.25 T-BAR HITCH
9	1	05022019	PIN, .188 X 2, COTTER
10	1	05022000	HITCH PIN, 1" X 3.5"
11	1	05022076	PIN, 1 DIA X 6 RD HD ZINC
12	1	05022031	PIN, .188 X 2.50, COTTER
13	1	05090293	MANUAL, HITCH, PIN HITCHES



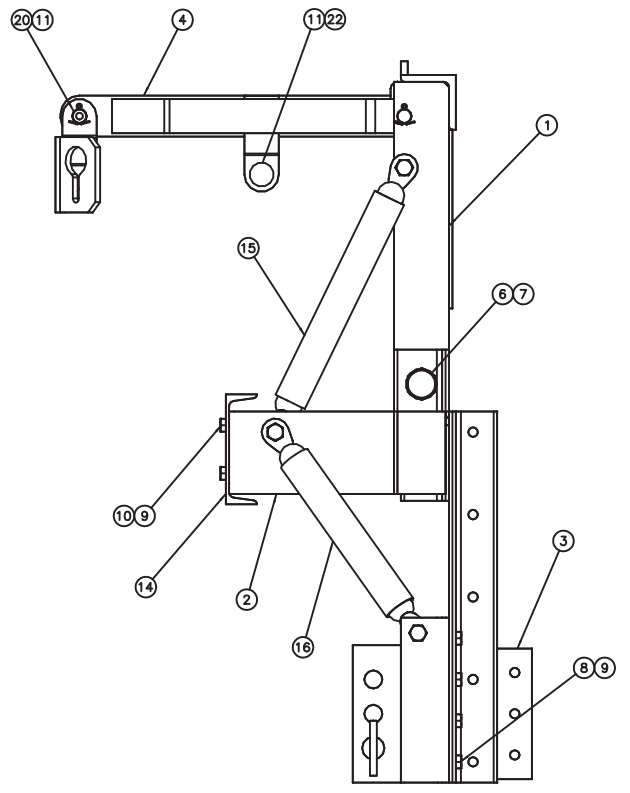
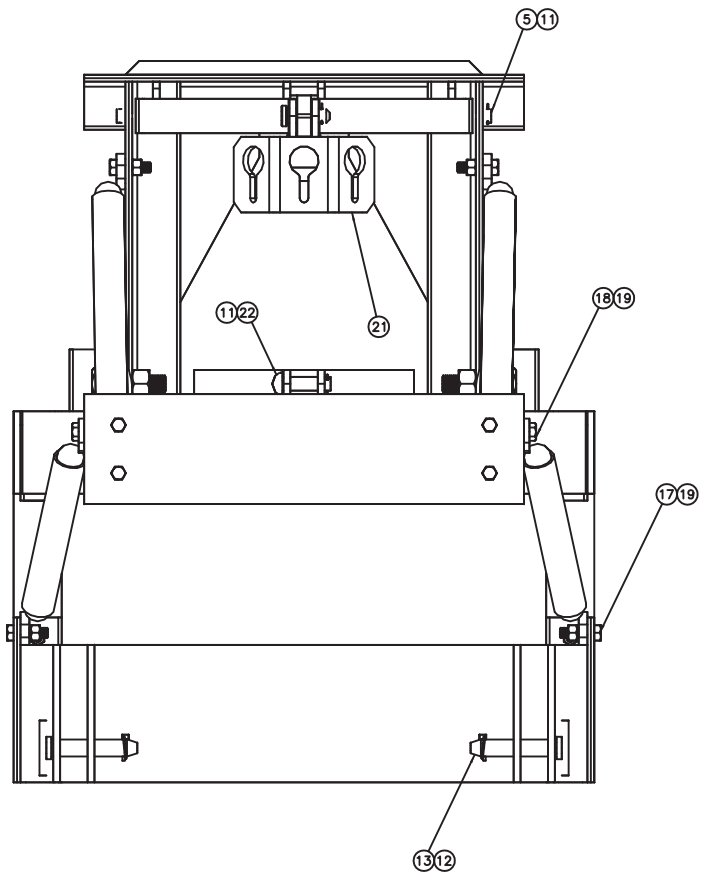
**00037476 HITCH, TP, PIN, 21, MC8003, TILT**

Item	Qty.	Part Number	Description
1	1	00010749	BODY WELDMENT, UPPER, HITCH, MC8002
2	1	00029183	BODY WELDMENT, LOWER, HITCH, MC8003
3	1	00021373	LIFT ARM ASSEMBLY, MC7101 <i>See Page 31</i>
4	2	00141752	PIN
5	4	05022106	PIN, .188 LYNCH
6	2	05010853	BOLT, 1.250-7 X 4.50, G8, HHCS, ZINC
7	2	05020835	NUT, 1.250-7, GC, TOP LOCK, C&W
8	2	00047565	PIN, 1.25 DIA X 9 T-BAR
9	1	05022076	PIN, 1 DIA X 6 RD HD ZINC
10	1	05022031	PIN, .188 X 2.5, COTTER ZINC
11	1	05022000	PIN, 1 DIA X 3.5 ROUND HEAD ZINC
12	1	05022019	PIN, .188 X 2, COTTER, ZINC



**00061335 HITCH, TP, PIN, 21, MC7821 LIFT ARM**

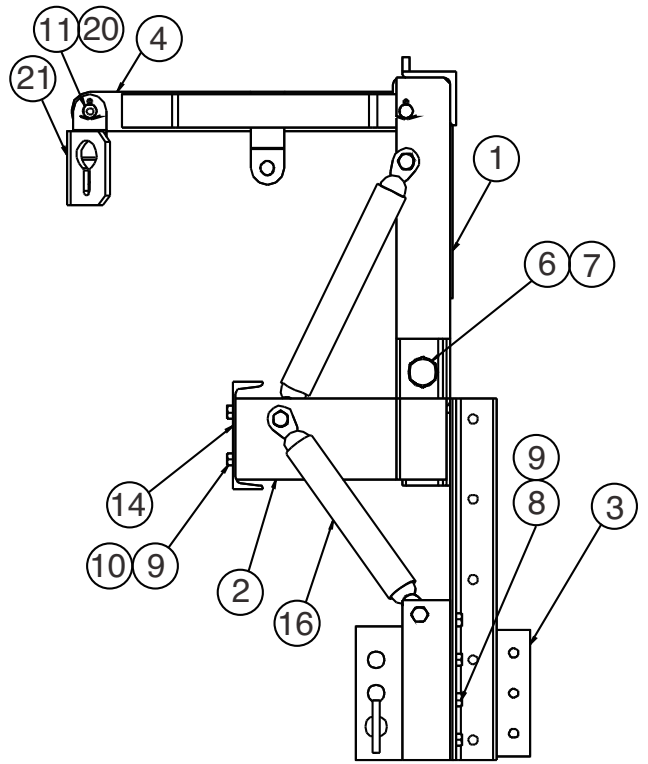
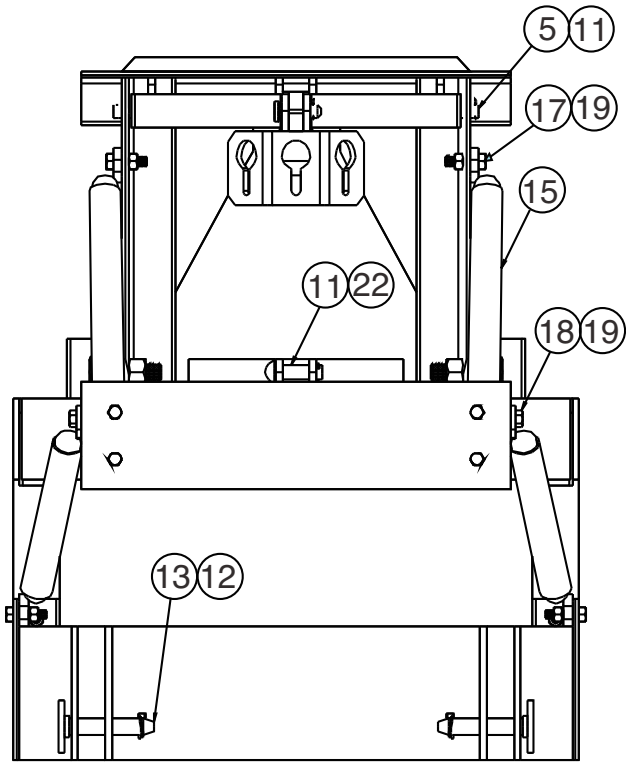
Item	Qty.	Part Number	Description
1	1	00010552	UPPER BODY WELDMENT
2	1	00010539	MIDDLE WELDMENT
3	1	00061336	BODY WELDMENT, LOWER
4	1	00010548	LIFT ARM WELDMENT
5	1	00010547	PIVOT ROD, LIFT ARM
6	2	05010853	BOLT, 1.250-7 X 4.5, G8, HHCS, ZINC
7	2	05020835	NUT, 1.25-7, GC, TOP LOCK, C&W
8	8	05010738	BOLT, .625-11 X 1.750, G8, HHCS, ZINC
9	12	05020270	NUT, .625-11, G8, HEX, ZINC
10	4	05010737	BOLT, .625-11 X 1.50, G8, HHCS, ZINC
11	5	05022019	PIN, .188 X 2, COTTER
12	2	05022106	PIN, .188 LYNCH
13	2	00080246	PIN, 1.25 X 6.25 T-BAR HITCH
14	1	00010546	BUMPER CHANNEL
15	2	00037499	SUPPORT ARM, UPPER
16	2	00038200	SUPPORT ARM, LOWER
17	4	05010766	BOLT, .750-10 X 2.5, G8, HHCS, ZINC
18	2	05010768	BOLT, .750-10 X 3, G8, HHCS, ZINC
19	6	05020849	NUT, .750-10, GC, TOP LOCK, C&W
20	1	05022051	PIN, 1 X 3.25, FLAT, HD
21	1	00011514	CHAIN BLOCK ASSEMBLY, TRIPLE KEY
22	2	05022000	PIN, 1 X 3.5 BUTTON HEAD, ZINC
23	1	05090293	MANUAL, HITCH, PIN HITCHES



**00030387 HITCH, TP, PIN, 33.5, MC7803 LIFT ARM**

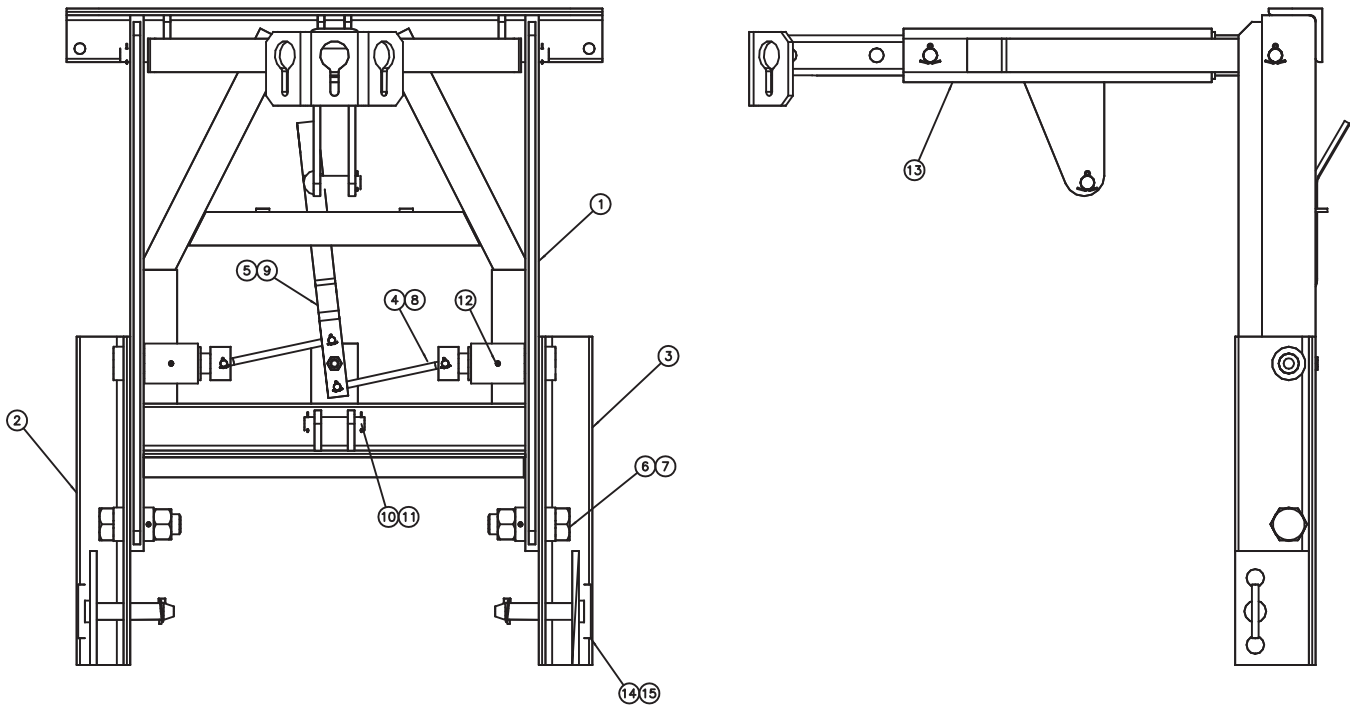
Item	Qty.	Part Number	Description
1	1	00010552	UPPER BODY WELDMENT
2	1	00010539	MIDDLE WELDMENT
3	1	00036900	LOWER BODY WELDMENT, 33.5 MC7803
4	1	00010548	LIFT ARM WELDMENT
5	1	00010547	PIVOT ROD, LIFT ARM
6	2	05010853	BOLT, 1.250-7 X 4.5, G8, HHCS, ZINC
7	2	05020835	NUT, 1.25-7, GC, TOP LOCK, C&W
8	8	05010738	BOLT, .625-11 X 1.750, G8, HHCS, ZINC
9	12	05020837	NUT, .625-11,GC TOP LOCK C&W
10	4	05010737	BOLT, .625-11 X 1.50, G8, HHCS, ZINC
11	5	05022019	PIN, .188 X 2, COTTER
12	2	05022106	PIN, .188 LYNCH
13	2	00080246	PIN, 1.25 X 6.25 T-BAR HITCH
14	1	00010546	BUMPER CHANNEL
15	2	00037499	SUPPORT ARM, UPPER
16	2	00038200	SUPPORT ARM, LOWER
17	4	05010766	BOLT, .750-10 X 2.5, G8, HHCS, ZINC
18	2	05010768	BOLT, .750-10 X 3, G8, HHCS, ZINC
19	6	05020849	NUT, .750-10, GC, TOP LOCK, C&W
20	1	05022051	PIN, 1 X 3.25, FLAT, HD
21	1	00011514	CHAIN BLOCK ASSEMBLY, TRIPLE KEY
22	2	05022000	PIN, 1 X 3.5 BUTTON HEAD, ZINC
23	1	05090293	MANUAL, HITCH, PIN HITCHES





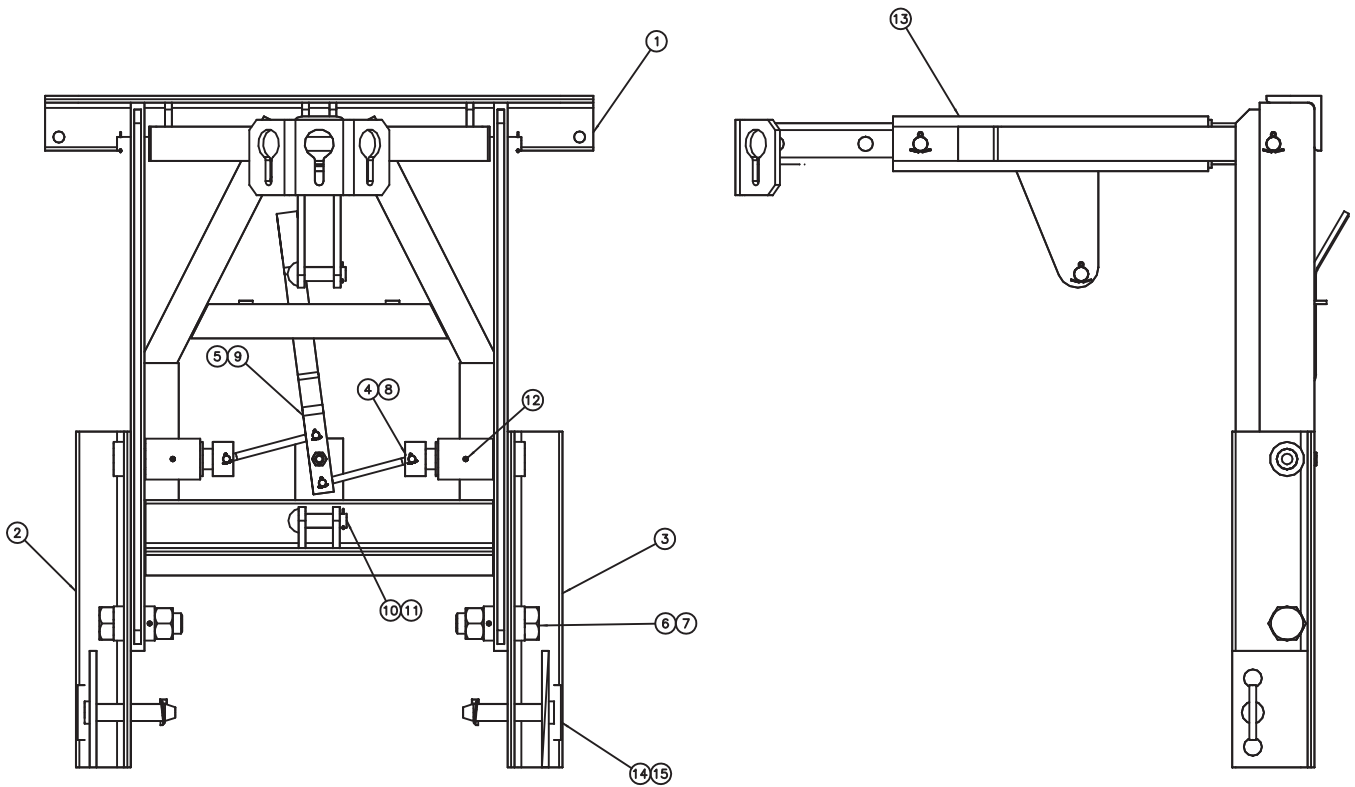
## 00030386 HITCH, TP, PIN, 30.5, MC7801 LIFT ARM

Item	Qty.	Part Number	Description
1	1	00010552	UPPER BODY WELDMENT
2	1	00010539	MIDDLE WELDMENT
3	1	00010540	BODY WELDMENT, LOWER, 30.5, MC7801
4	1	00010548	LIFT ARM WELDMENT
5	1	00010547	PIVOT ROD, LIFT ARM
6	2	05010853	BOLT, 1.250-7 X 4.5, G8, HHCS, ZINC
7	2	05020835	NUT, 1.25-7, GC, TOP LOCK, C&W
8	8	05010738	BOLT, .625-11 X 1.750, G8, HHCS, ZINC
9	12	05020837	NUT, .625-11,GC TOP LOCK C&W
10	4	05010737	BOLT, .625-11 X 1.50, G8, HHCS, ZINC
11	5	05022019	PIN, .188 X 2, COTTER
12	2	05022106	PIN, .188 LYNCH
13	2	00080246	PIN, 1.25 X 6.25 T-BAR HITCH
14	1	00010546	BUMPER CHANNEL
15	2	00037499	SUPPORT ARM, UPPER
16	2	00038200	SUPPORT ARM, LOWER
17	4	05010766	BOLT, .750-10 X 2.5, G8, HHCS, ZINC
18	2	05010768	BOLT, .750-10 X 3, G8, HHCS, ZINC
19	6	05020849	NUT, .750-10, GC, TOP LOCK, C&W
20	1	05022051	PIN, 1 X 3.25, FLAT, HD
21	1	00011514	CHAIN BLOCK ASSEMBLY, TRIPLE KEY
22	2	05022000	PIN, 1 X 3.5 BUTTON HEAD, ZINC
23	1	05090293	MANUAL, HITCH, PIN HITCHES



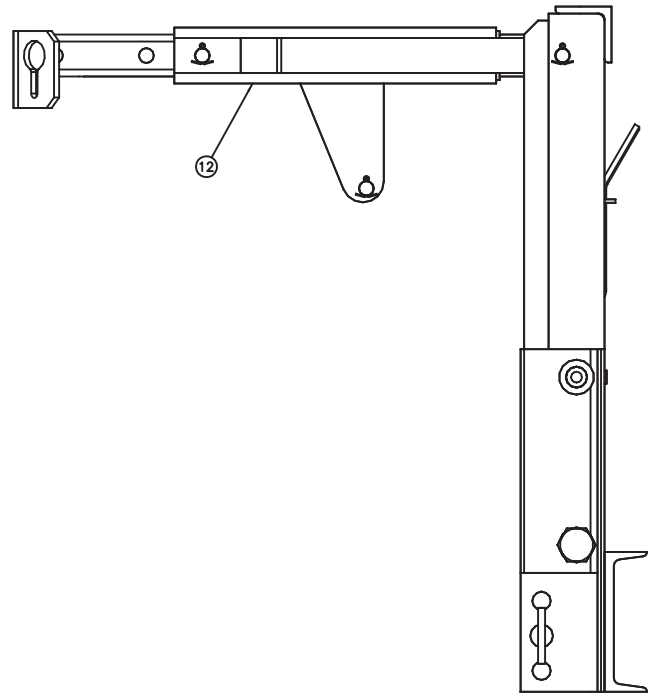
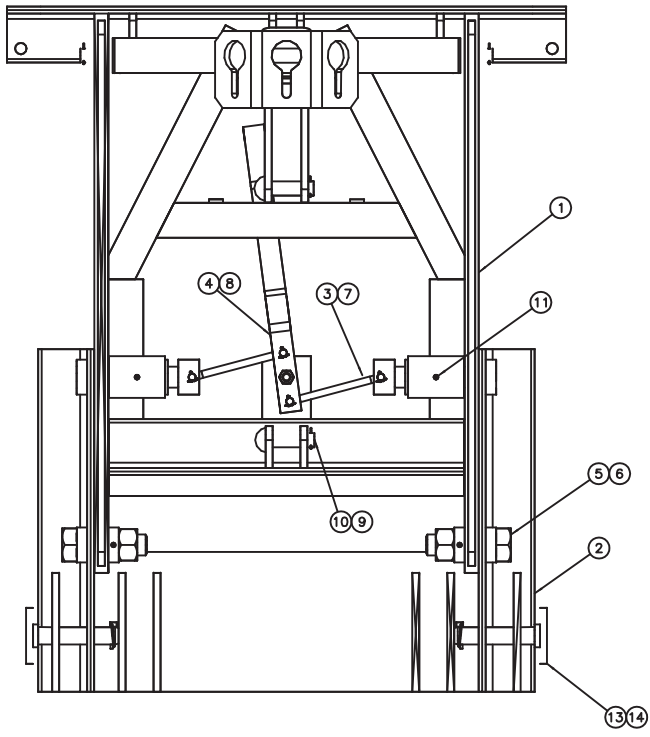
**00010816 HITCH, TP, PIN, 33.5, MC202, TILT, LIFT ARM**

Item	Qty.	Part Number	Description
1	1	00010817	HITCH WLDMT,UPPER,MC202
2	1	00010806	LEG WLDMT,HITCH,MC201,RH
3	1	00010807	LEG WLDMT,HITCH,MC201,LH
4	2	00038222	LINKAGE ARM WLDMT,HITCH,MC202
5	1	00038208	HANDLE BAR WLDMT,HITCH,MC201
6	2	05010871	BOLT 1.50-6 x 5.00 G8 HHCS ZC
7	2	05020806	NUT 1.50-6 GC TOPLOCK C&W
8	4	05022021	PIN .125 x 1.00 COTTER
9	1	05020270	NUT .625-11 G8 HEX ZC
10	2	05022019	PIN .188 x 2.00 COTTER
11	1	01132020	PIN,FANTAIL CYLINDER,JD SNOW RANGER
12	2	05050288	GREASE ZERK,.250-28 STRAIGHT THREADED
13	1	00038224	LIFT ARM ASSY,HITCH,MC202
14	2	00080246	PIN 1.25 x 5.156 GL,T-BAR,6.25 OAL,HITCH
15	2	05022106	PIN .188 LYNCH
16	1	05090293	MANUAL,HITCH,PIN HITCHES



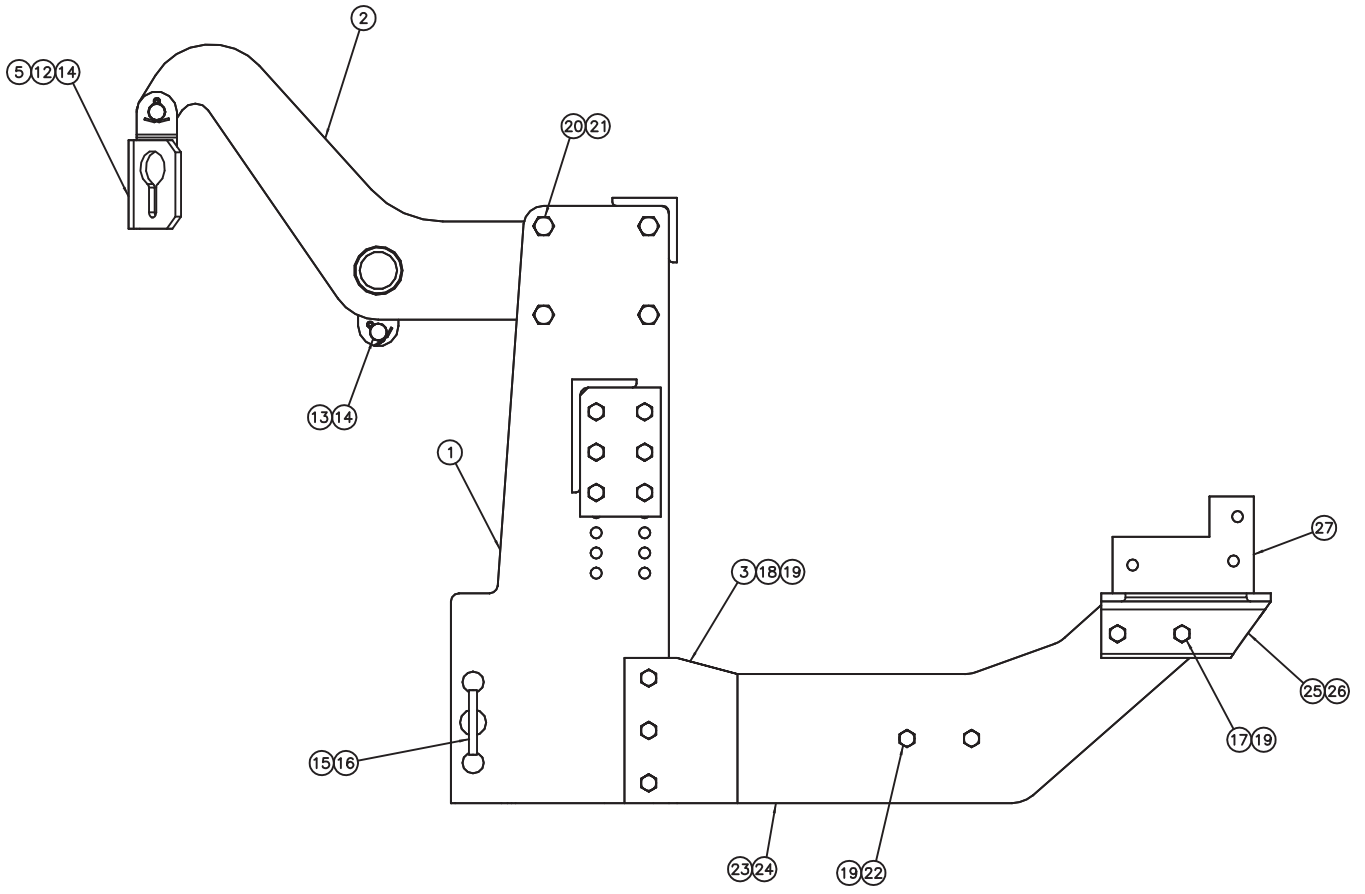
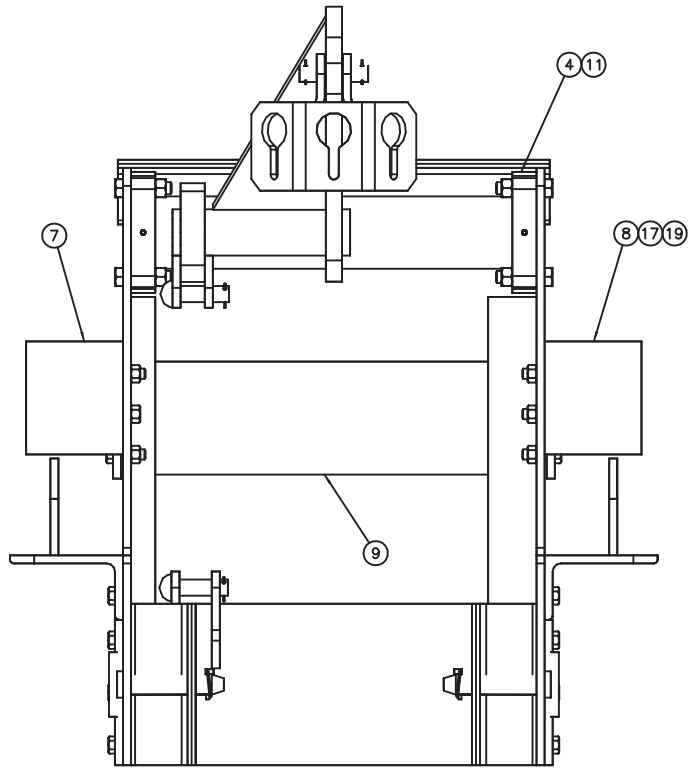
**00010787 HITCH, TP, PIN, 30.5, MC201, TILT LIFT ARM**

Item	Qty.	Part Number	Description
1	1	00010788	HITCH WLDMT,UPPER,MC201
2	1	00010806	LEG WLDMT,HITCH,MC201,RH
3	1	00010807	LEG WLDMT,HITCH,MC201,LH
4	2	00038207	LINKAGE ARM WELDMENT,HITCH MC201
5	1	00038208	HANDLE BAR WLDMT,HITCH,MC201
6	2	05010871	BOLT 1.50-6 x 5.00 G8 HHCS ZC
7	2	05020806	NUT 1.50-6 GC TOPLOCK C&W
8	4	05022021	PIN .125 x 1.00 COTTER
9	1	05020837	NUT .625-11 GC TOPLOCK C&W
10	1	05022019	PIN .188 x 2.00 COTTER
11	1	05022000	PIN 1.00 x 3.50 ROUND HEAD ZC
12	4	05050288	GREASE ZERK,.250-28 STRAIGHT THREADED
13	1	00038210	LIFT ARM ASSY,HITCH,MC201
14	2	00080246	PIN 1.25 x 5.156 GL,T-BAR,6.25 OAL,HITCH
15	2	05022106	PIN .188 LYNCH
16	1	05090293	MANUAL,HITCH,PIN HITCHES



**00010819 HITCH, TP, PIN, 21, 30.5, MC200 TILT, LIFT ARM**

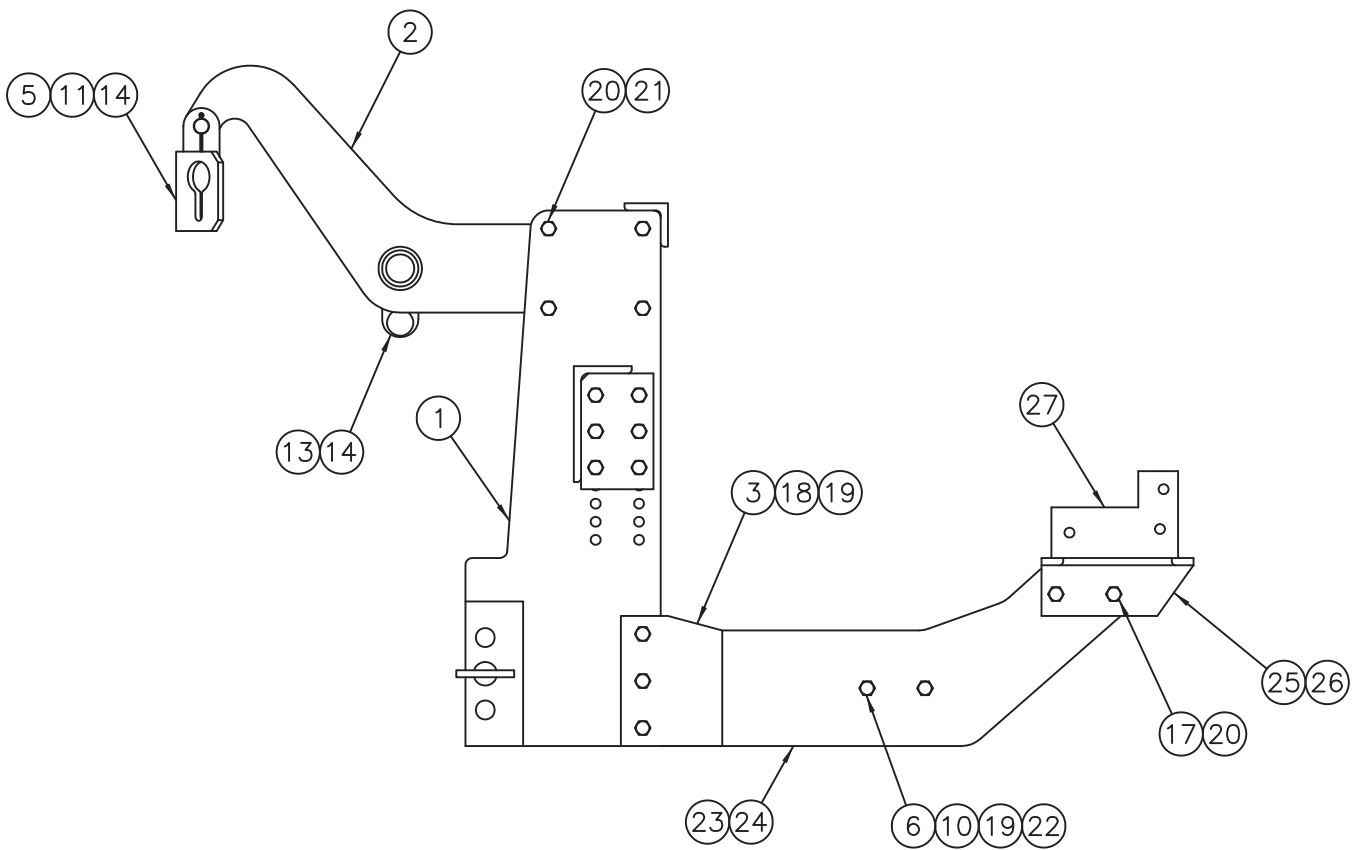
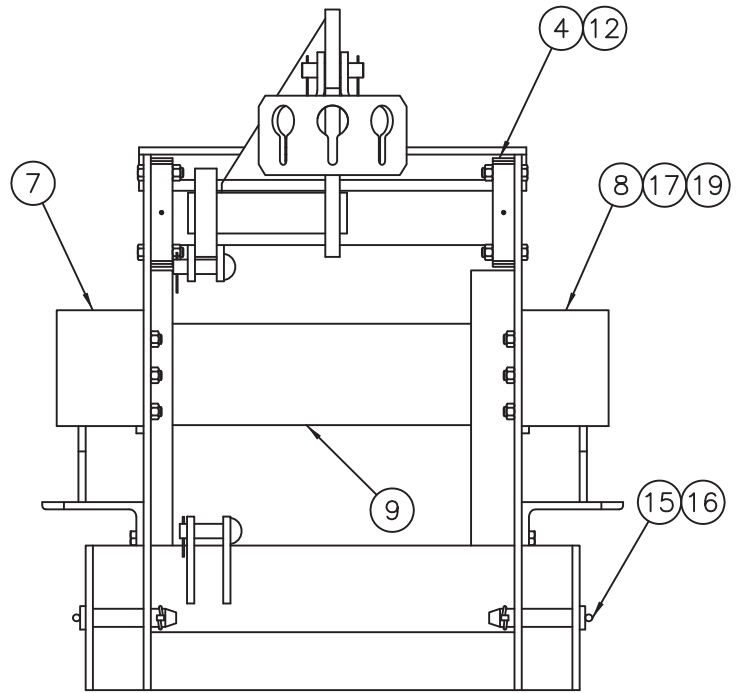
<b>Item</b>	<b>Qty.</b>	<b>Part Number</b>	<b>Description</b>
1	1	00010788	HITCH WLDMT,UPPER,MC201
2	1	00038217	FRAME WLDMT,LWR,HITCH,MC200
3	2	00038207	LINKAGE ARM WELDMENT,HITCH MC201
4	1	00038208	HANDLE BAR WLDMT,HITCH,MC201
5	2	05010871	BOLT 1.50-6 x 5.00 G8 HHCS ZC
6	2	05020806	NUT 1.50-6 GC TOPLOCK C&W
7	4	05022021	PIN .125 x 1.00 COTTER
8	1	05020837	NUT .625-11 GC TOPLOCK C&W
9	1	05022019	PIN .188 x 2.00 COTTER
10	1	05022000	PIN 1.00 x 3.50 ROUND HEAD ZC
11	4	05050288	GREASE ZERK,.250-28 STRAIGHT,THREADED
12	1	00038210	LIFT ARM ASSY,HITCH,MC201
13	2	00080246	PIN 1.25 x 5.156 GL,T-BAR,6.25 OAL,HITCH
14	2	05022106	PIN .188 LYNCH
15	1	05090293	MANUAL,HITCH,PIN HITCHES



**00048223 HITCH, TP, PIN, 21, MTA8021**

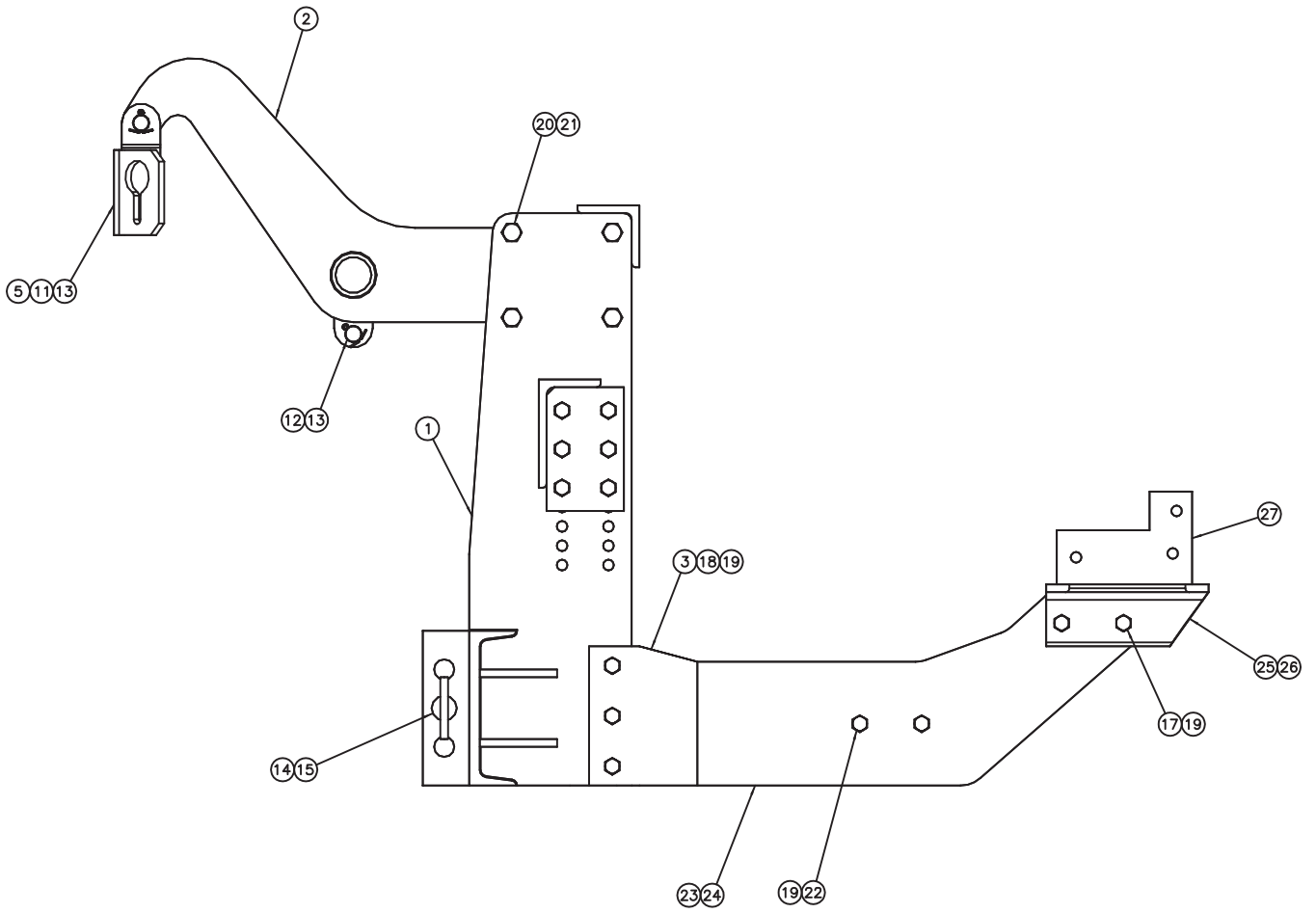
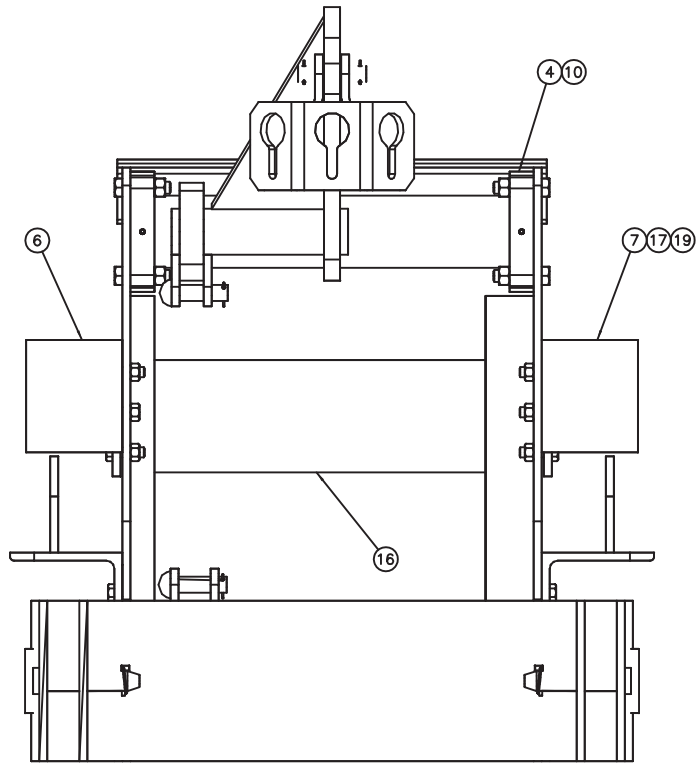
Item	Qty.	Part Number	Description
1	1	00048323	HITCH WELDMENT, MTA 8021
2	1	01311612	LIFT ARM WELDMENT
3	2	01311604	BRACKET, SIDE PLATE
4	2	01311600	LIFT ARM BLOCK
5	1	00011514	CHAIN BLOCK ASSEMBLY, TRIPLE KEY
6	1	01311605	CROSS TUBE WELDMENT
7	1	00039026	MOUNTING BRACKET WELDMENT, RH
8	1	00039021	MOUNTING BRACKET WELDMENT, LH
9	1	00039023	CHAN 7 X 12.25# X 24.625
10	1	00039001-B	MOUNT, CROSS TUBE, HITCH, MC9001, MTA, MS PAINTED
11	2	05050288	GREASE ZERK, .250-28 STRAIGHT THREADED
12	1	02211610	CYLINDER MOUNT PIN
13	2	05022000	PIN, 1 X 3.5, BUTTON HEAD, ZINC
14	4	05022019	PIN, .188 X 2, COTTER
15	2	00080246	PIN, 1.25 X 6.25 T-BAR HITCH
16	2	05022106	PIN, .188 LYNCH
17	16	05010739	BOLT, .625-11 X 2, G8, HHCS, ZINC
18	6	05010742	BOLT, .625-11 X 2.750, G8, HHCS, ZINC
19	26	05020837	NUT, .625-11, GC, TOP LOCK, C & W
20	8	05010768	BOLT, .750-10 X 3, G8, HHCS, ZINC
21	8	05020849	NUT, .750-10, GC, TOP LOCK, C & W
22	4	05010738	BOLT, .625-11 X 1.750, G8, HHCS, ZINC
23	1	00039012	SIDE PLATE WELDMENT, HITCH, RH
24	1	00039013	SIDE PLATE WELDMENT, HITCH, LH
25	1	00039016	MOUNTING ANGLE, HITCH, RH
26	1	01311609	MOUNTING ANGLE, HITCH, LH
27	2	011311608	FRAME CLIP, HITCH
28	1	05090293	MANUAL, HITCH, PIN HITCHES





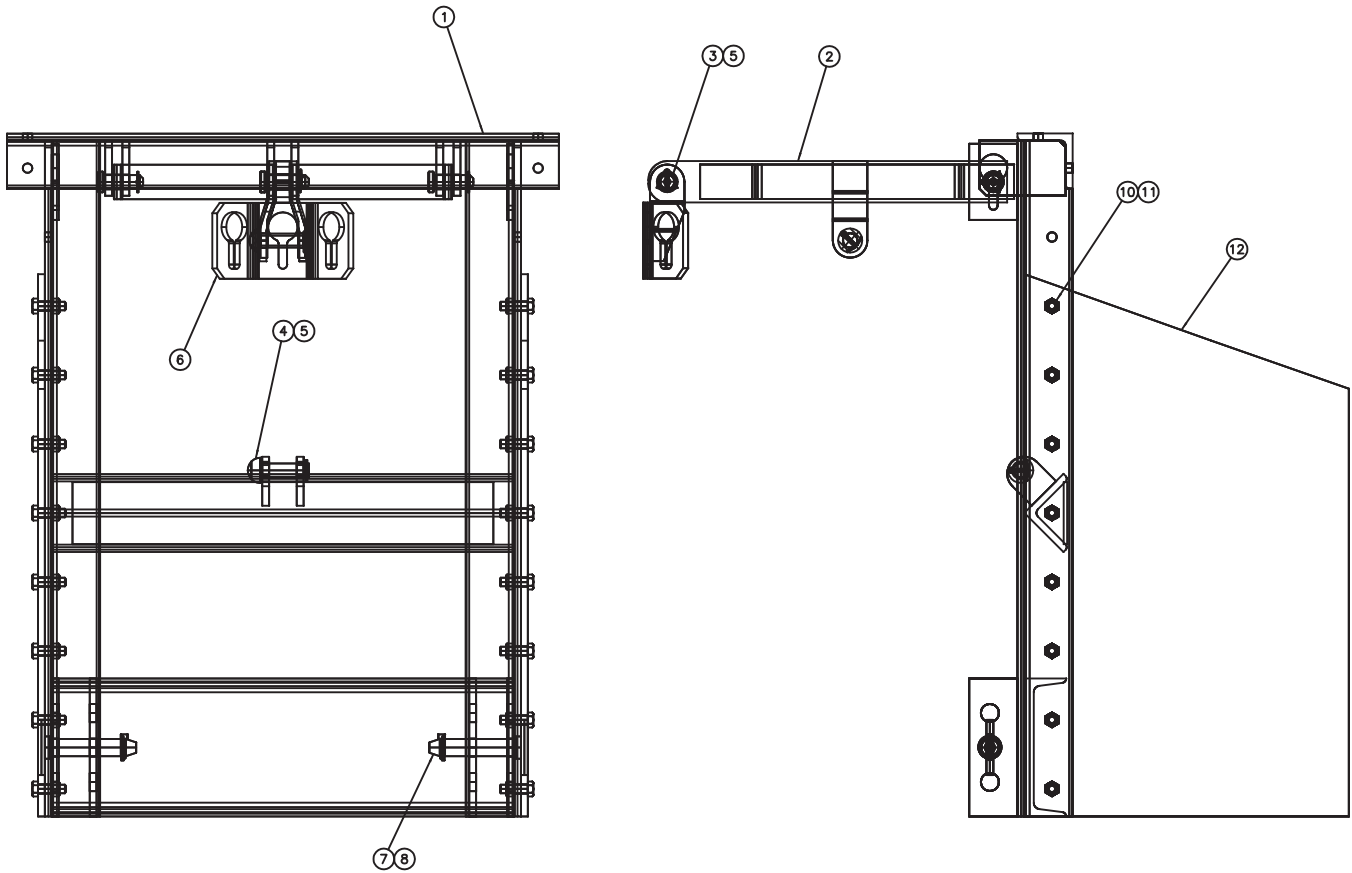
**00039018 HITCH, TP, PIN, 30.5 MTA 8030**

Item	Qty.	Part Number	Description
1	1	00039019	HITCH WELDMENT, MTA 8030
2	1	01311612	LIFT ARM WELDMENT
3	2	01311604	BRACKET, SIDE PLATE
4	2	01311600	LIFT ARM BLOCK
5	1	00011514	CHAIN BLOCK ASSEMBLY, TRIPLE KEY
6	1	01311605	CROSS TUBE WELDMENT
7	1	00039026	MOUNTING BRACKET WELDMENT, RH
8	1	00039021	MOUNTING BRACKET WELDMENT, LH
9	1	00039023	CHAN 7 X 12.25# X 24.625
10	1	00039001-B	MOUNT, CROSS TUBE, HITCH, MC9001, MTA, MS PAINTED
11	2	05050288	GREASE ZERK, .250-28 STRAIGHT THREADED
12	1	02211610	CYLINDER MOUNT PIN
13	2	05022000	PIN, 1 X 3.5, BUTTON HEAD, ZINC
14	4	05022019	PIN, .188 X 2, COTTER
15	2	00080246	PIN, 1.25 X 6.25 T-BAR HITCH
16	2	05022106	PIN, .188 LYNCH
17	16	05010739	BOLT, .625-11 X 2, G8, HHCS, ZINC
18	6	05010742	BOLT, .625-11 X 2.750, G8, HHCS, ZINC
19	26	05020837	NUT, .625-11, GC, TOP LOCK, C & W
20	8	05010768	BOLT, .750-10 X 3, G8, HHCS, ZINC
21	8	05020849	NUT, .750-10, GC, TOP LOCK, C&W
22	4	05010738	BOLT, .625-11 X 1.750, G8, HHCS, ZINC
23	1	00039012	SIDE PLATE WELDMENT, HITCH, RH
24	1	00039013	SIDE PLATE WELDMENT, HITCH, LH
25	1	00039016	MOUNTING ANGLE, HITCH, RH
26	1	01311609	MOUNTING ANGLE, HITCH, LH
27	2	011311608	FRAME CLIP, HITCH
28	1	05090293	MANUAL, HITCH, PIN HITCHES



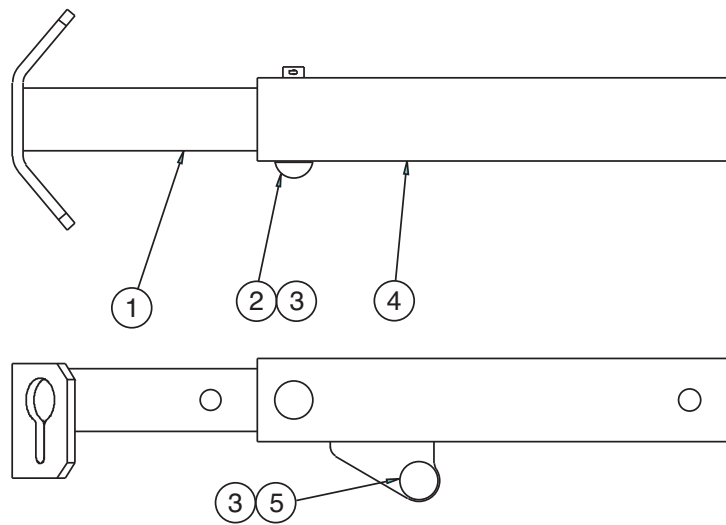
**00061330 HITCH, TP, PIN, 33.5 MTA 8033**

Item	Qty.	Part Number	Description
1	1	00061331	HITCH WELDMENT, MTA 8033
2	1	01311612	LIFT ARM WELDMENT
3	2	01311604	BRACKET, SIDE PLATE
4	2	01311600	LIFT ARM BLOCK
5	1	00011514	CHAIN BLOCK ASSEMBLY, TRIPLE KEY
6	1	00039026	MOUNTING BRACKET WELDMENT, RH
7	1	00039021	MOUNTING BRACKET WELDMENT, LH
8	1	01311605	CROSS TUBE WELDMENT
9	1	00039001-B	MOUNT, CROSS TUBE, HITCH, MC9001, MTA, MS PAINTED
10	2	05050288	GREASE ZERK, .250-28 STRAIGHT THREADED
11	1	02211610	CYLINDER MOUNT PIN
12	2	05022000	PIN, 1 X 3.5, BUTTON HEAD, ZINC
13	4	05022019	PIN, .188 X 2, COTTER
14	2	00080246	PIN, 1.25 X 6.25 T-BAR HITCH
15	2	05022106	PIN, .188 LYNCH
16	1	00039023	CHAN 7 X 12.25# X 24.625
17	16	05010739	BOLT, .625-11 X 2, G8, HHCS, ZINC
18	6	05010742	BOLT, .625-11 X 2.750, G8, HHCS, ZINC
19	26	05020837	NUT, .625-11, GC, TOP LOCK, C & W
20	8	05010768	BOLT, .750-10 X 3, G8, HHCS, ZINC
21	8	05020849	NUT, .750-10, GC, TOP LOCK, C&W
22	4	05010738	BOLT, .625-11 X 1.750, G8, HHCS, ZINC
23	1	00039012	SIDE PLATE WELDMENT, HITCH, RH
24	1	00039013	SIDE PLATE WELDMENT, HITCH, LH
25	1	00039016	MOUNTING ANGLE, HITCH, RH
26	1	01311609	MOUNTING ANGLE, HITCH, LH
27	2	011311608	FRAME CLIP, HITCH
28	1	05090293	MANUAL, HITCH, PIN HITCHES



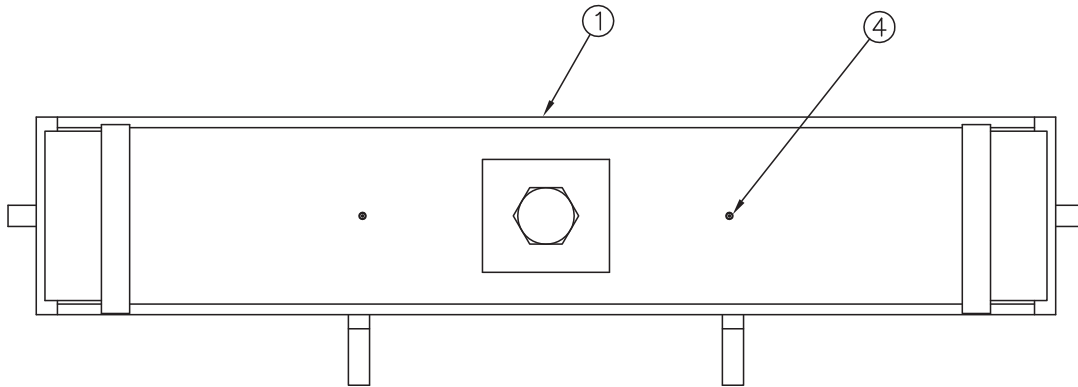
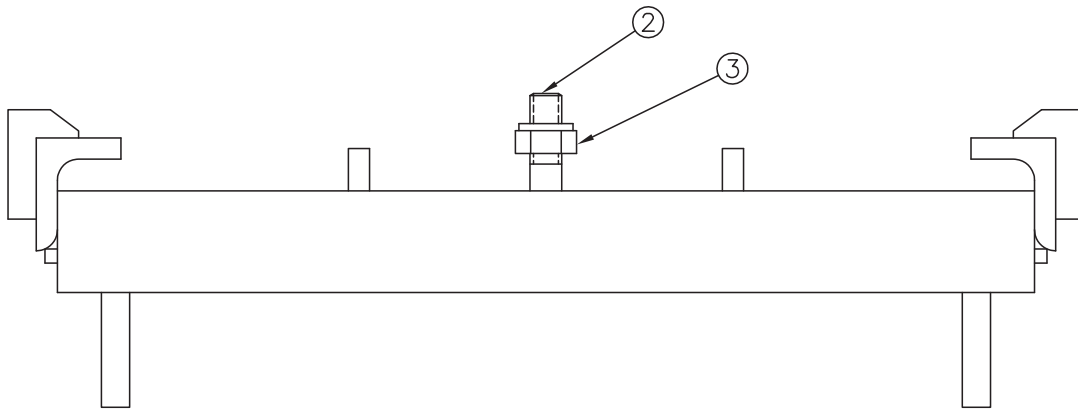
**02140401 HITCH, TP, PIN, 30.5, MC7802**

Item	Qty.	Part Number	Description
1	1	01141910	HITCH WLDMT,TP,MC7802
2	1	00010548	LIFT ARM WLDMT,HITCH,MC7801
3	4	05022051	COMPRESSION TRIP PIN
4	2	05022000	PIN 1.00 x 3.50 ROUND HEAD ZC
5	6	05022019	PIN .188 x 2.000 COTTER
6	1	00011514	KEYHOLE CHAIN PLATE WLDMT,
7	2	00080246	PIN,1.25 DIA x 5.156 GL,T-BAR
8	2	05022106	PIN .188 LYNCH
9	1		HYDRAULIC CYLINDER (NOT SHOWN)
10	16	05010739	BOLT .625-11 x 2.00 G8 HHCS ZC
11	16	05020837	NUT .625-11 GC TOPLOCK C&W
12	2	00027294	SIDE PLATE,HITCH,MC7802
13	1	05090293	MANUAL,HITCH,PIN HITCHES



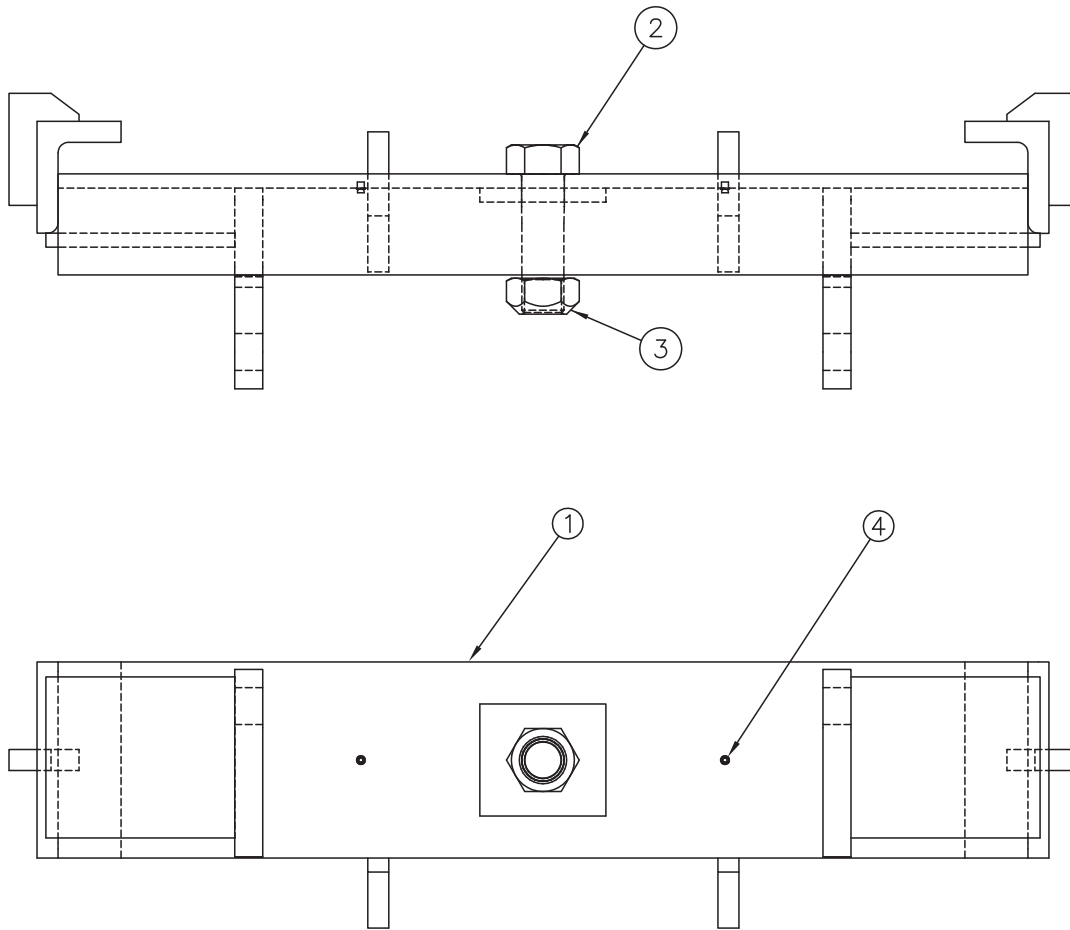
### 00021373 LIFT ARM ASSEMBLY, HITCH, MC7101

Item	Qty.	Part Number	Description
1	1	00021324	LIFT ARM WELDMENT, HITCH, MC7101
2	1	05022077	PIN, 1 X 4.5, BUTTON HEAD, ZINC
3	2	05022019	PIN, .188 X 2, COTTER
4	1	00021371	LIFT ARM TUBE, OUTER, MC7101
5	1	05022000	HITCH PIN, 1" X 3.5"



**00060822 HITCH PP, PIN, 30.5, SP 30.5, 1.25**  
**00060836 HITCH, PP, PIN, 33.5, SP33.5, 1.25**  
**00060837 HITCH, PP, PIN, 21.0, SP21, 1.25**

Item	Qty.	Part Number	Description
1	1	00060827	SWIVEL PLATE WELDMENT, 1.281
1	1	00060825	SWIVEL PLATE WELDMENT, 1.281
1	1	00060823	HITCH WLDMT,PP,PIN,30.5,SP30.5
2	1	05010853	BOLT 1.25-7 x 4.50 G8 HHCS ZC
2	1	05010853	BOLT 1.25-7 x 4.50 G8 HHCS ZC
2	1	05010853	BOLT 1.25-7 x 4.50 G8 HHCS ZC
3	1	05020835	NUT 1.25-7 GC TOPLOCK C&W
3	1	05020835	NUT 1.25-7 GC TOPLOCK C&W
3	1	05020835	NUT 1.25-7 GC TOPLOCK C&W
4	2	05050288	GREASE FITTING, .250-28 UNF ST
4	2	05050288	GREASE FITTING, .250-28 UNF ST
4	2	05050288	GREASE FITTING, .250-28 UNF ST



**00039903 SWIVEL PLATE ASSEMBLY, 1.531 SWIVEL PLATE, 21  
00039903 HITCH, PP, PIN, 30.5, SP30.5, 1.5 BOLT-ON**

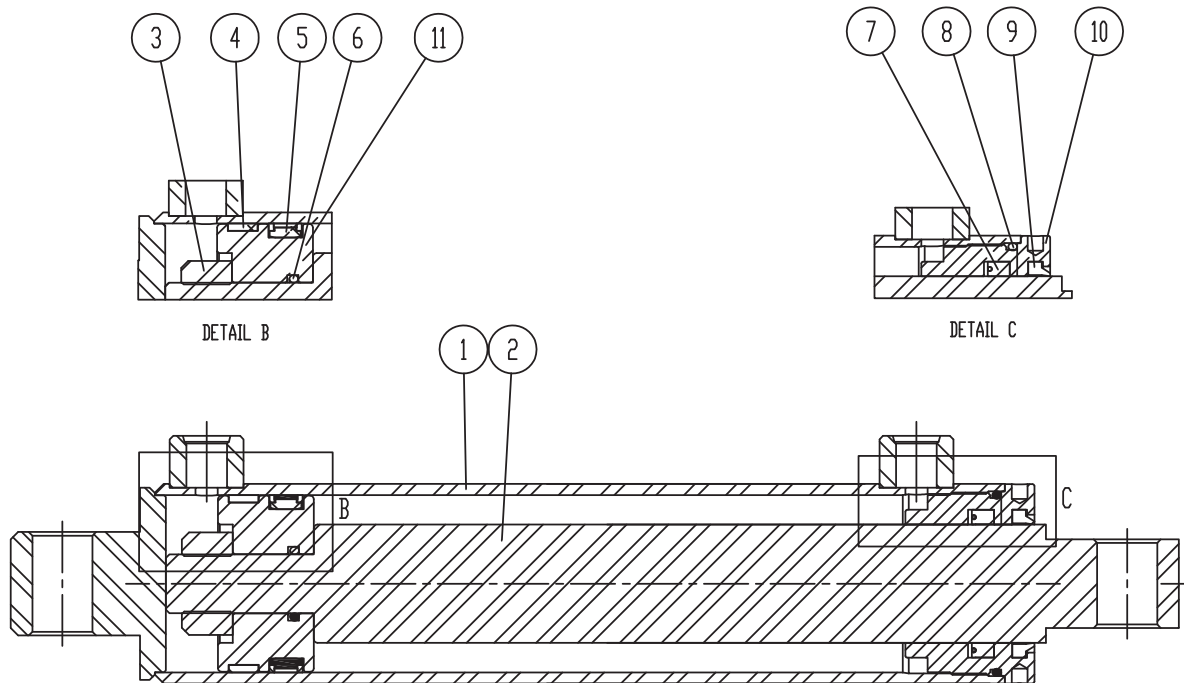
Item	Qty.	Part Number	Description
1	1	00060828 00060824	SWIVEL PLATE WELDMENT, 21 SWIVEL PLATE WELDMENT, 30.5
2	1	05010871	BOLT, 1.50-6 X 5, G8, HHCS, ZINC
3	1	05020806	NUT, 1.50-6, GC, TOP LOCK,C&W
4	2	05050288	GREASE ZERK, .250-28 STRAIGHT THREADED



# Cylinders

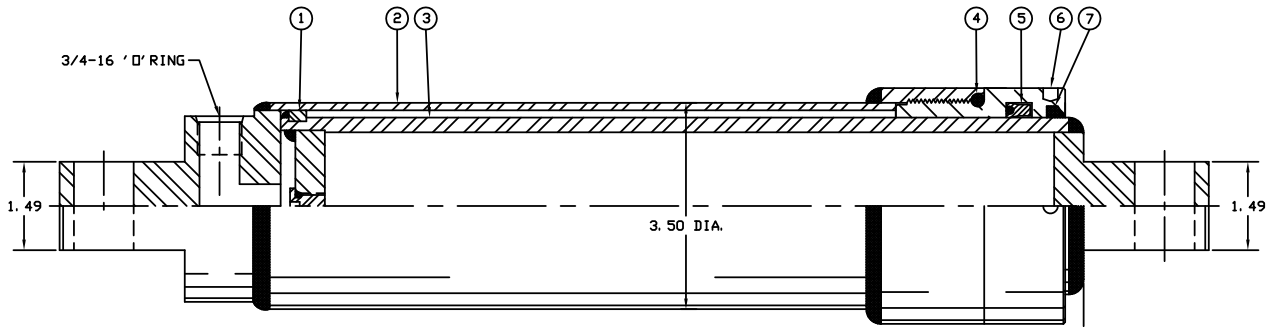
## 05002714 CYLINDER, 3 X 10, DA, LIFT, IN-LINE WITH MOUNT

BEST METAL	ITEM	QTY	PART #	DESCRIPTION
	1	1	N/A	JACKET ASSEMBLY
	2	1	N/A	ROD ASSEMBLY, NITROBAR
	3	1	N/A	LOCK NUT
	4	1	*	WEAR RING
	5	1	*	DYNAMIC SEAL
	6	1	*	O-RING
	7	1	*	POLY PAK
	8	1	*	O-RING
	9	1	*	ROD WIPER
	10	1	05003339	GLAND NUT
	11	1	05003340	PISTON, WEAR RING
			05003225	SEAL KIT (Includes all parts marked with an *)



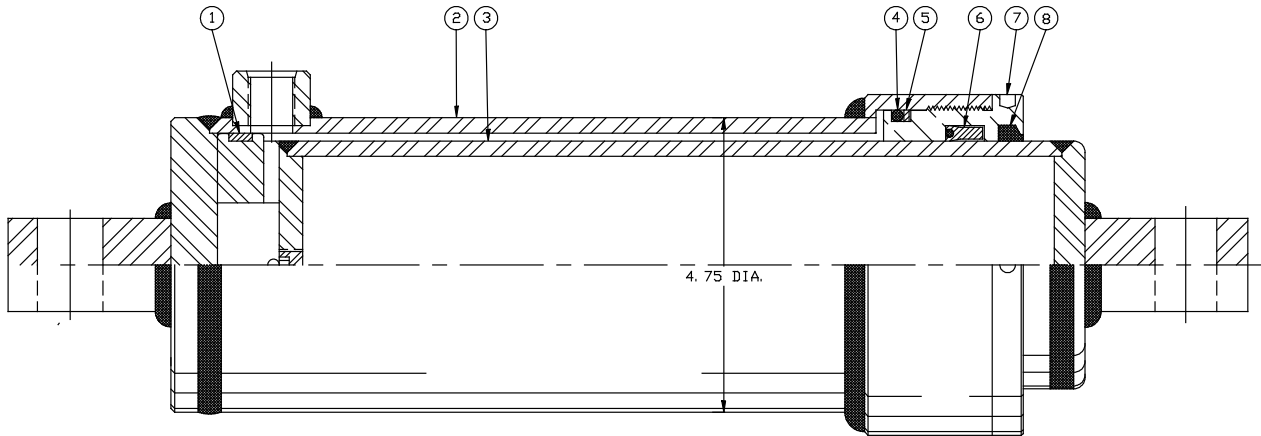
# 05000017 CYLINDER, 3x10, SA, .75-16 ORB 18 PIN CENTERS

<i>BEST METAL</i>	ITEM	QTY	PART #	DESCRIPTION
	1	1	---	PISTON LOCK RING
	2	1	---	JACKET ASSEMBLY
	3	1	---	PISTON ROD ASSEMBLY
	4	1	---	O-RING
	5	1	---	POLY PAK
	6	1	05002938	GLAND NUT
	7	1	---	ROD WIPER
			05002920	SEAL KIT (Items 4-5 & 7)



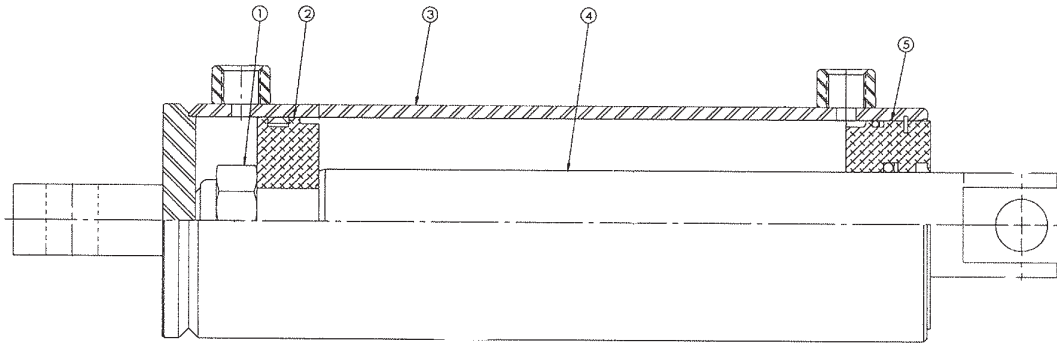
# 05002615 CYLINDER, 4x10, SA, .75-16ORB 19 PIN CENTERS

<i>BEST METAL</i>	ITEM	PART #	DESCRIPTION
	1	05002396	WEAR RING
	2	---	JACKET ASSEMBLY
	3	---	PISTON ROD ASSEMBLY
	4	---	O-RING
	5	---	BACKUP WASHER
	6	05002397	POLY PAK
	7	05003354	GLAND NUT
	8	05002389	ROD WIPER
		05002950	SEAL KIT



# 05002762 CYLINDER, 4x10, DA, NIT, .75 ORB, LIFT IN-LINE w/ PIN

BOBALEE	ITEM	QTY	PART #	DESCRIPTION
	1	1	---	LOCK NUT
	2	1	05000023	PISTON UNI
	3	1	---	CASE WELDMENT
	4	1	---	ROD
	5	1	05000026	HEAD
	6	2	---	PORT PLUG
	7	---	---	GREY PRIMER
	8	---	---	BLACK GLOSS
	9	1	05000021	SEAL KIT



## MONROE TRUCK EQUIPMENT, INC. WARRANTY SNOW & ICE CONTROL PRODUCTS

**Monroe Truck Equipment, Inc.** warrants to the original purchaser, that if any part of the product proves to be defective in workmanship or material within **ONE YEAR** of the original installation, and is returned to us within 30 days of the discovered defect, we will (at our option) repair or replace the defective part. This warranty does not apply to damage resulting from misuse, neglect, accident, improper installation, normal wear items or lack of maintenance. This warranty is exclusive and supersedes all other warranties, whether expressed or implied. **Monroe Truck Equipment, Inc.** neither assumes, nor authorizes anyone to assume for it, any other obligation or liability in connection with this warranty and will not be liable for consequential damages.

All engines, pumps, motors, cylinders and valves are warranted by their manufacturer and not by **Monroe Truck Equipment, Inc.**. The manufacturer's warranty will apply to these parts. Electrical and hydraulic components are not to be disassembled without the express written permission of Monroe Truck Equipment. Use of replacement parts other than original equipment voids this warranty.

All defective parts returned must be accompanied by the model number, serial number, date installed, date of defect, description of defect, and the name of the distributor from whom it was purchased. All warranty claims must have prior written approval from **Monroe Truck Equipment, Inc.**

***Please return the warranty registration card that accompanies this manual to confirm receipt of this parts catalog and acknowledge the information contained within. Failure to return the attached card may result in a voided warranty.***



**1051 West 7<sup>th</sup> Street  
 Monroe, WI 53566  
 608-328-8127 ~ Fax: 608-328-4278**

## Warranty Policy Uninstalled Parts and Equipment Provided by Monroe Truck Equipment

Monroe Truck Equipment will provide the following limited warranty for a period of one year to the original purchaser of all uninstalled goods provided by Monroe Truck Equipment:

**LIMITED WARRANTY:** All goods provided by Monroe Truck Equipment (MTE) will be free from defects in material and workmanship for a period of one year from the date of purchase by the original purchaser. This limited warranty shall be the sole and exclusive remedy for any such product found to be defective. This limited warranty supercedes all previous warranties and is exclusive and in lieu of all other warranties, whether expressed or implied.

This limited warranty applies only to parts or accessories manufactured by MTE and/or provided by same. Except with respect to title, this limited warranty does not pertain to parts or accessories not manufactured and/or provided by MTE, regardless of whether such parts or accessories were selected and/or recommended by MTE. MTE will, as a service to the buyer, pass on any warranties received from the original manufacturer of MTE provided parts and/or accessories.

MTE will not under any circumstances be liable for any incidental or consequential damages whether in tort, contract, or otherwise, for any bodily injury, death, property damage, loss of use, or loss of income resulting from or in any way arising out of any goods provided by MTE, or their sale, use, or manufacture.

Any warranty claim deemed to be arising from the result of misuse, abuse, neglect, accident, improper installation, lack of maintenance, act of war (whether declared or otherwise), or act of God will be denied. Any repair or modification by the buyer or any third party, without the prior written consent of MTE, will void any possible warranty compensation. Any damage deemed to be the result of abnormal operation will not be compensated by this warranty.

Normal or special maintenance items such as fuels, fluids, tires, belts, hoses, filters, air cleaners, light bulbs, and any other items subject to normal wear and tear that are supplied in connection with goods provided by MTE are not allowed under this warranty.

All engines, pumps, cylinders, valves, and motors are warranted by their manufacturer and not by Monroe Truck Equipment. The manufacturer's warranty will apply to these parts. Electrical and hydraulic components are not to be disassembled without the express written consent of MTE. Any disassembly of MTE provided components without prior authorization will void the applicable warranty.

Monroe Truck Equipment shall be the sole and final determining authority as it applies to the administration of this warranty policy. Purchaser acknowledges receipt of Monroe Truck Equipment Warranty Policy and agrees to be bound by same.



**GLOBAL SOLUTIONS**  
 ARMORED VEHICLES ~ SPORT TRUCK CONVERSIONS  
 MUNICIPAL SNOW & ICE CONTROL ~ FIRE APPARATUS  
 PICKUP TRUCK ACCESSORIES ~ TRUCK EQUIPMENT/MODIFICATIONS





**1051 West 7<sup>th</sup> Street  
 Monroe, WI 53566  
 608-328-8127 ~ Fax: 608-328-4278**

Any and all warranty claims must be forwarded to MTE within 10 days of defect discovery. A copy of the original Monroe Truck Equipment invoice as well as the manufacturer's model number, serial number, and date of installation must accompany all correspondence regarding said claims. MTE will, at their option, choose whether to repair or replace the defective part unless otherwise specified by the original manufacturer of said part.

**Procedures for Warranty Claims Notification**

For submission of any warranty claim please contact Monroe Truck Equipment – Warranty Department at 800-356-8134

The following documentation will be needed when you call for initial warranty authorization:

1. A copy of the original MTE invoice.
2. Make, Model, and VIN or Serial Number of the equipment involved.
3. Part number and serial number of the part in question.
4. A complete description of the problem.

The following must accompany any claims submitted to Monroe Truck Equipment:

1. Documented photographs of any physical damage.
2. Inspection notes by MTE personnel or MTE authorized 3<sup>rd</sup> party.
3. Authorization number issued by Monroe Truck Equipment – Warranty Department.

Defective parts must be returned to Monroe Truck Equipment (freight prepaid) within 30 days of issuance of Authorization Number.

Monroe Truck Equipment reserves the right to void any warranty for failure to comply with Monroe Truck Equipment Warranty Policy.

This policy is effective October 11, 2012