



Parts & Service Manual for MONROE QUICK HITCHES



Monroe Snow & Ice Control
1051 W. 7th Street • Monroe, WI 53566
USA: 877-834-9049 • Fax: 608-329-8488
www.monroetruck.com

05050498-9
12/2/2013

Table of Contents

General Information	4
How to Order Parts	4
Return Policy	4
Safety Instructions	5
Maintenance Instructions	6
Hydraulic Schematics	7
Installation Instructions	8
Replacement Parts	14
Warranty	31

General Information

- Use only Monroe Truck Equipment O.E.M. replacement parts. Failure to do so will void the warranty.
- Location descriptions are noted in direction of travel (i.e. front, rear, left and right).
- Delivery of replacement parts is subject to our sales delivery terms.
- Replacement parts listed in this manual reflect the most common items for this product. If you do not find the part you require, please call your distributor.
- Monroe Truck Equipment reserves the right to make revisions or alterations to the parts manual at any time.

How to Order Parts

To order or inquire about replacement parts, please contact the distributor or store that the product was purchased through. To speed the information flow, please have the following information available:

- Model Number
- Serial Number
- Part Number and/or Description of the Part
- Quantity Needed

For further information about Monroe Truck Equipment replacement parts, please call 877-834-9049.

Return Policy

Merchandise returned to Monroe Truck Equipment must have a Warranty Service Request (WSR) form filled out completely and signed by authorized personnel.

To get your WSR form for whole goods, call Snow & Ice Sales at 800-880-0109.

To get your WSR form for replacement parts, call Warranty at 877-834-9049..

All returned items are subject to a 15% restocking fee and ***must be sent freight pre-paid.***

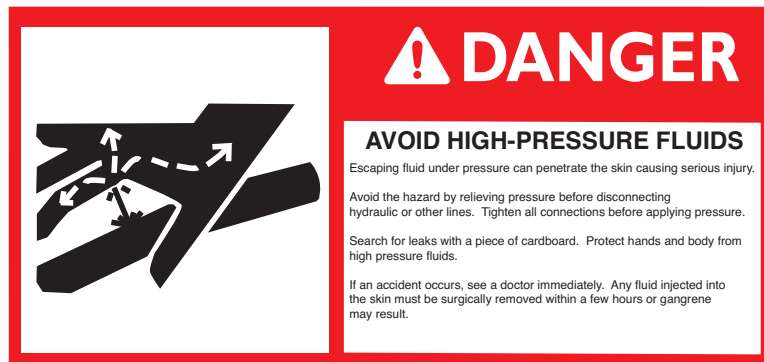
Safety Instructions

WARNING

Before working under the vehicle or around the spreader, shut off the truck engine and remove the key from the ignition. Prevent accidental startup and operation to avoid personal injury!

- Read all installation, safety and maintenance instructions completely before operating this equipment
- Keep all personnel clear of moving parts while equipment is being operated.
- Do not operate equipment in need of maintenance! Repair immediately!
- While operating this equipment, use common sense, use caution, be alert and be safety-conscious.

NOTE: Before installation of any hitch, or maintenance to hitch or truck, be sure to apply parking brake, chock the rear wheels and remove the key from the ignition switch.



Safety Decal Signal Words

 **DANGER**

DANGER (Red) indicates an imminently hazardous situation which, if not avoided, will result in death or serious injury.

 **WARNING**

WARNING (Orange) indicates a potentially hazardous situation which, if not avoided, could result in death or serious injury.

 **CAUTION**

CAUTION (Yellow) indicates a potentially hazardous situation which, if not avoided, may result in minor or moderate injury.

CAUTION

CAUTION (Yellow) used without the safety risk alert symbol indicates a potentially hazardous situation which, if not avoided, may result in property damage.

Maintenance Instructions

WARNING

Before working under the vehicle or around the spreader, shut off the truck engine and remove the key from the ignition. Prevent accidental startup and operation to avoid personal injury!

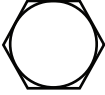


In Season:

- Check for loose bolts and nuts daily, and re-torque before use. (Failure to inspect equipment on a daily basis may seriously affect safety and/or efficiency.)
- Lubricate all grease fittings every ten hours of normal use and more frequently under heavy use. Locations are shown in parts breakdowns of specific models.
- Check all hydraulic fittings for tightness on a regular basis.
- Due to the nature of use and environment this equipment is operating in, damage and wear may occur at anytime. Therefore, Monroe Truck Equipment recommends the end user establish and follow a daily inspection routine before using this hitch.

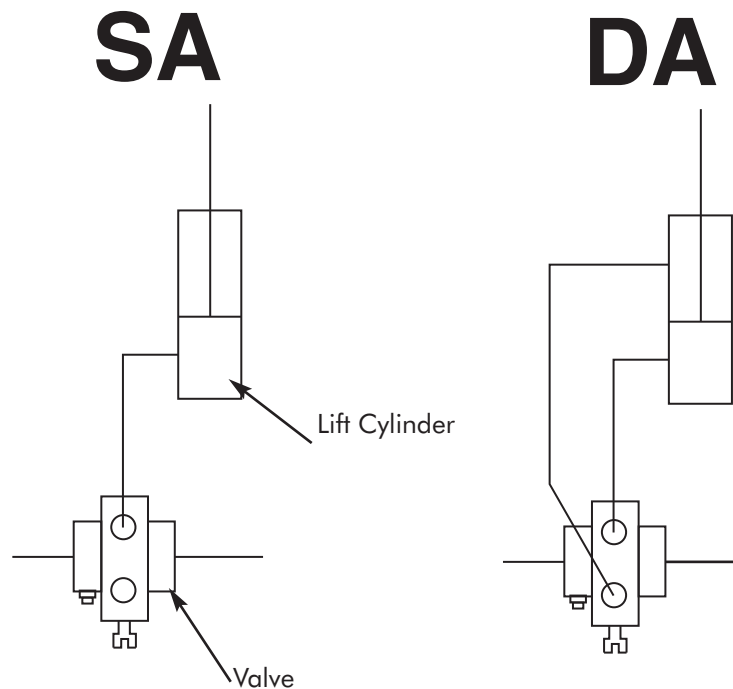
Off Season: (If Applicable)

- Use care when disconnecting hydraulic lines to assure that no dirt or foreign objects enter the hydraulic system. Use caps to cover hydraulic hose fittings and insert plugs into hydraulic ports.
- Hydraulic cylinders should be fully retracted when stored during the off season to prevent damage or corrosion. The remaining exposed shaft surface should be coated with a thick grease to prevent corrosion, which must be removed before returning to regular service.
- Check mounting bolts for wear and/or damaged threads and replace before re-mounting.
- Lubricate all grease fittings and pivot points prior to storage.

Torque Chart

SIZE	 GRADE 2	 GRADE 5	 GRADE 8
1/4-20	50 IN-LBS	75 IN-LBS	9 FT-LBS
3/8-16	15 FT-LBS	23 FT-LBS	35 FT-LBS
1/2-13	35 FT-LBS	55 FT-LBS	80 FT-LBS
5/8-11	75 FT-LBS	110 FT-LBS	170 FT-LBS
3/4-10	130 FT-LBS	200 FT-LBS	280 FT-LBS
1-8	190 FT-LBS	480 FT-LBS	680 FT-LBS
1 1/4-7	380 FT-LBS	840 FT-LBS	1,360 FT-LBS

Hydraulic Schematic



Installation of a manifold and quick connect fittings is recommended for easy removal of hitch.

Truck Requirements

- The truck intended for use with this Monroe Hitch must have an extended frame to allow space for front mounted hydraulic pump (if required), hitch mounting plates etc. Frame extensions should be as thick as the truck frame and welded in place. They should extend approximately 18" - 22" from the front of the truck and can be trimmed if there is any excess.
- Spring modification and/or airbags may be required to carry additional weight (not included). Options should be considered and any parts needed should be purchased prior to installation of hitch.
- GVW and application must be considered prior to hitch installation.

Installation Instructions

These mounting instructions are intended as a guide to aid you in the installation of your **Monroe Hitch**. All dimensions noted in the instructions are approximate and may vary due to: make and model of chassis, tire size, type of suspension, customer preference, and interference caused by immovable attachments.

Monroe Truck Equipment assumes no responsibility for improper installation, unless installed at a **Monroe Truck Equipment** location. Mounting location should be discussed by the end-user and the installer prior to installation in order to achieve the best possible installation.

****NOTE: Hitch mounting height is determined by plow push height.**

1. Remove Front Bumper from truck.
2. Cover the cab with a fire resistant tarp to protect it from sparks. If needed, trim the front of the truck frame to keep the hitch close to the truck and/or hydraulic pump. Use a cutting torch and keep the cut as square as possible. Clean all rough edges with a grinder.
3. If a Monroe brace kit is used: Clamp the mounting angle $\frac{3}{8}$ " x 4" x 6" x 37" provided to the truck frame and measure to check for squareness.
4. Clamp mounting plates to each side of the frame so that they match up to the mounting angle. Tack weld the mounting plates to the mounting angle. **(Fig. 1)** Mounting plates are not included with hitch or brace kit. $\frac{1}{2}$ " plate is suggested.
5. Drill (4) $1\frac{1}{2}$ " holes or (3) $2\frac{1}{2}$ " holes through tow hooks (if required), mounting plates and truck frame. **(Fig. 1) NOTE** ---Apply rust inhibitor or paint to drilled holes.
6. Using a proper lifting device, lift the hitch to the correct height determined by push height of plow and clamp it to the mounting angle. Recheck the height on both sides of the hitch. **NOTE** ---Be sure to center and level the hitch to the truck frame and not to the ground.



Fig. 1



Fig. 2

Installation Instructions

7. If a tilting hitch is being installed, wedge a screwdriver on one side between the fixed portion of the hitch and the tilting portion. This will ensure clearance between the two portions and allow proper function of the hitch. **(Fig. 2)** Maintain a $\frac{1}{8}$ " gap between portions.
8. Tack weld the hitch to the mounting angle and recheck all measurements before welding. **NOTE**---*Be sure surfaces being welded are cleaned of paint, grease and dirt.*
9. Remove the hitch and mounting assembly and weld. Mounting plates are not welded on the inside.
10. Re-install hitch assembly and tow hooks. Tighten all bolts to specifications. **(Fig. 3)**
NOTE ---*Always use grade 8 bolts and nuts and hardened washers when fastening to a truck frame.*
11. If installing a tilting hitch (sometimes the hood has to be tied back some so hitch is not so heavy to tilt), tilt engine hood forward and determine the amount of clearance needed between the hood and the hitch. Weld a short piece of heavy duty $\frac{3}{8}$ " chain (6-10 links) (Not Furnished) to the fixed portion of the hitch and a $\frac{1}{2}$ " bolt to the tilting section. Fasten the chain with a washer and nut. **(Fig. 4)**
12. Coat the tilting pins with thin layer of anti-seize lubricant.
13. Cut the center section out of the front bumper. The amount removed should be equal to the width of the hitch mounting plates. Attach the two bumpers to the hitch and tack weld them in place, or fabricate mounting brackets. Check measurements and appearance. The bumper should be level to the truck frame, not the ground. When satisfied with fit weld or bolt the bumper sections in place. **(Fig. 5 & 6)**
- 14 . Touch up with paint.

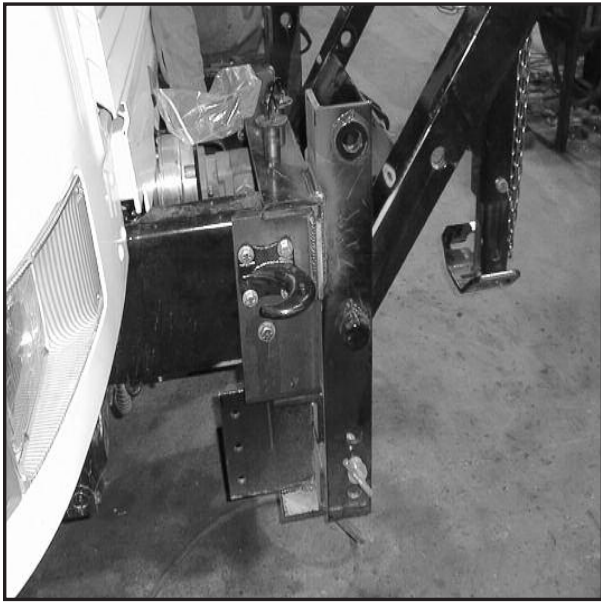


Fig. 3



Fig. 4



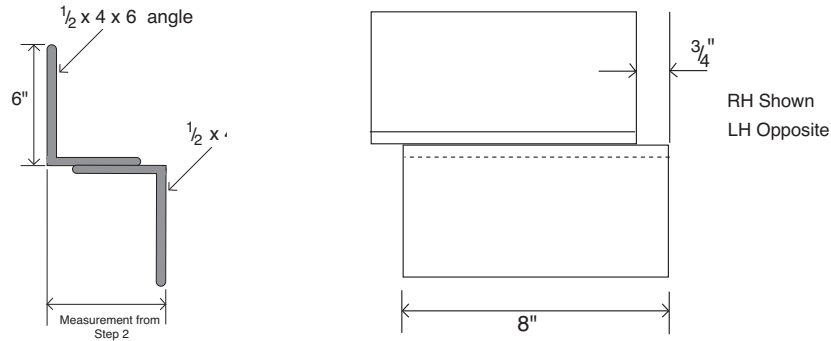
Fig. 5



Fig. 6

Installation Instructions for MC50 Kit

1. Chock the rear wheels and lift the front wheels with a floor jack. Place two heavy duty jack stands under the front axle and remove the front wheels.
2. To ensure proper placement of the frame mounting angles, measure from the outside of the truck frame to the inside of the suspension U-bolts. Add $1\frac{1}{2}$ " to that measurement. This allows clearance between the U-bolts and the frame mounts. Fit provided mounting angles together as shown in the following diagram and weld completely.

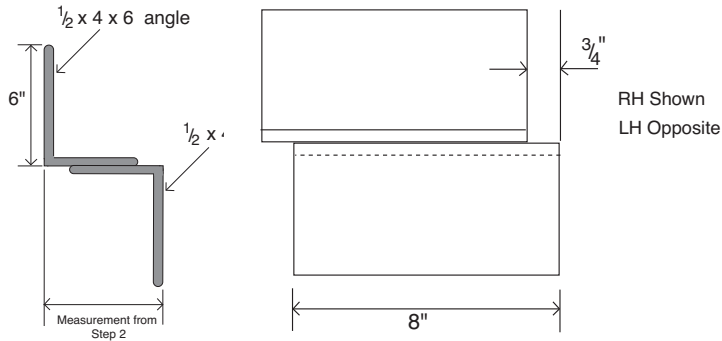


3. Clamp the frame mounting angles to the frame above the front axle. Angles must be located equal on both sides. Drill (3) $2\frac{1}{32}$ " holes through each frame mounting angles and the truck frame. Some notching of the mounting angles may be needed to allow air or brake lines to pass through the frame. Hole location may depend on the shape of the mounting angles after notching.
NOTE --When drilling use caution to avoid any hydraulic, air or brake lines on the inside of the truck frame. Apply rust inhibitor or paint to drilled holes.
4. Attach each frame mounting angle to the truck frame using a minimum of (3) $\frac{5}{8}$ " bolts, (6) $\frac{5}{8}$ " hardened washers and (3) $\frac{5}{8}$ " toplock nuts, not provided. Tighten bolts just until snug.
NOTE--The length of the bolts will depend upon the thickness of the frame and components.
5. Cut a radius and drill a $\frac{13}{16}$ " hole at one end of the thrust arm bar. Clamp the other end to the frame mounting angles above front axle. Fasten rounded end of the thrust arm to plates to be welded onto hitch (not included). Tack weld thrust arm bars to mounting angles and connector plates to hitch. If a Husting Hitch is being installed a pusher angle (this angle should be used on most hitches with pusharms), $\frac{1}{2}$ " x 3" x 4" x 37" L (not included, may vary) must be welded on to the hitch.
6. Disassemble and weld complete. **NOTE** -- Cross bracing and/or bar reinforcement may be required for service (not included) only with side plates.
7. Touch up pusharm assembly with paint and re-install on the truck. Tighten all bolts to specifications.
8. Put the wheels back on the truck and remove the jack stands and the rear wheel chocks. Torque wheels to spec.

See page 62 for reference

Installation Instructions for Universal Side Plates

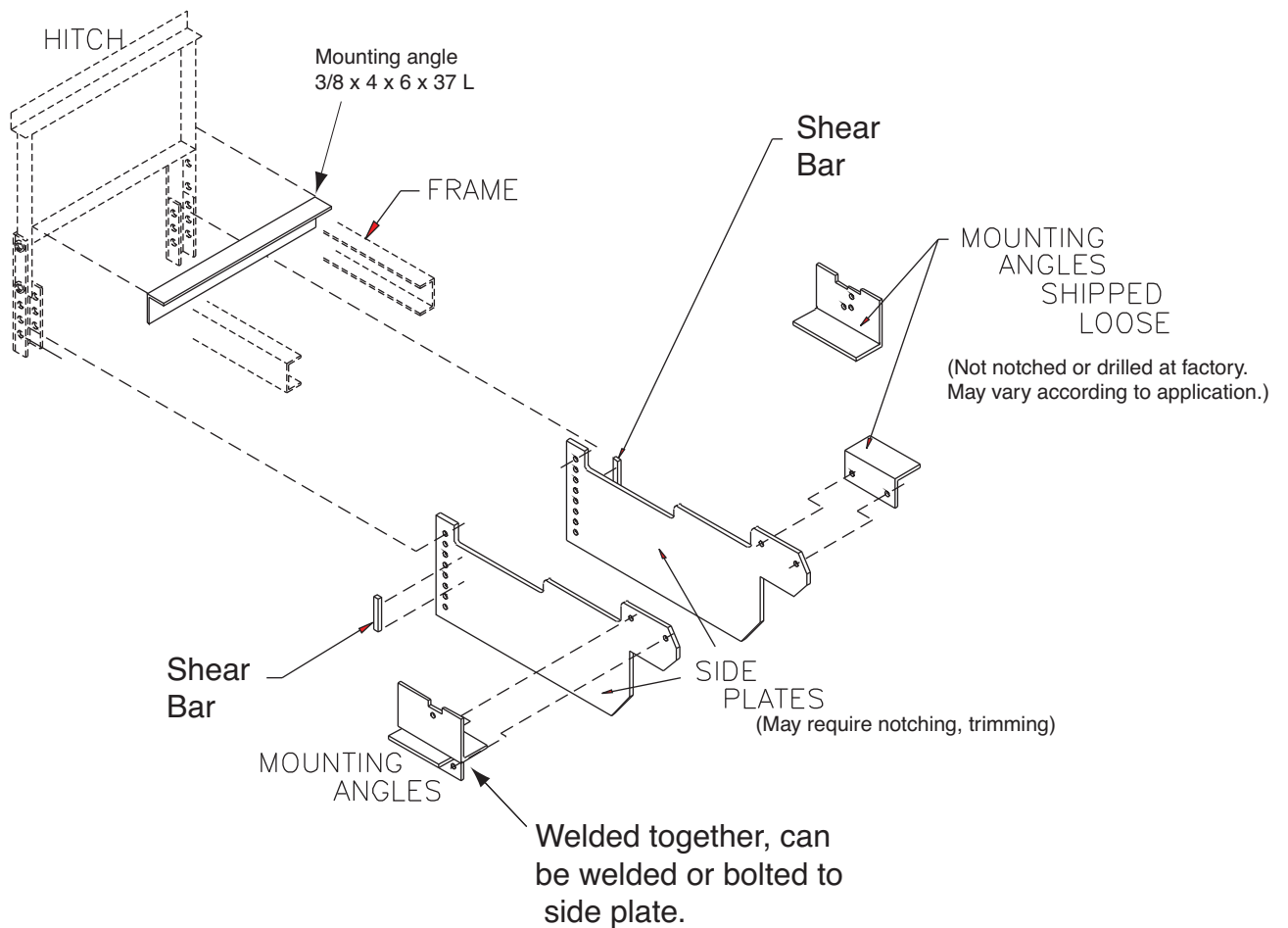
1. Remove the key from the ignition switch, chock the rear wheels and lift the front wheels with a floor jack. Place two heavy duty jack stands under the front axle and remove the front wheels.
2. To ensure proper placement of the frame mounting angles, measure from the outside of the truck frame to the inside of the suspension U-bolts. Add $1\frac{1}{2}$ " to that measurement. This allows clearance between the U-bolts and the frame mounts. Fit provided mounting angles together as shown in the following diagram and weld completely.

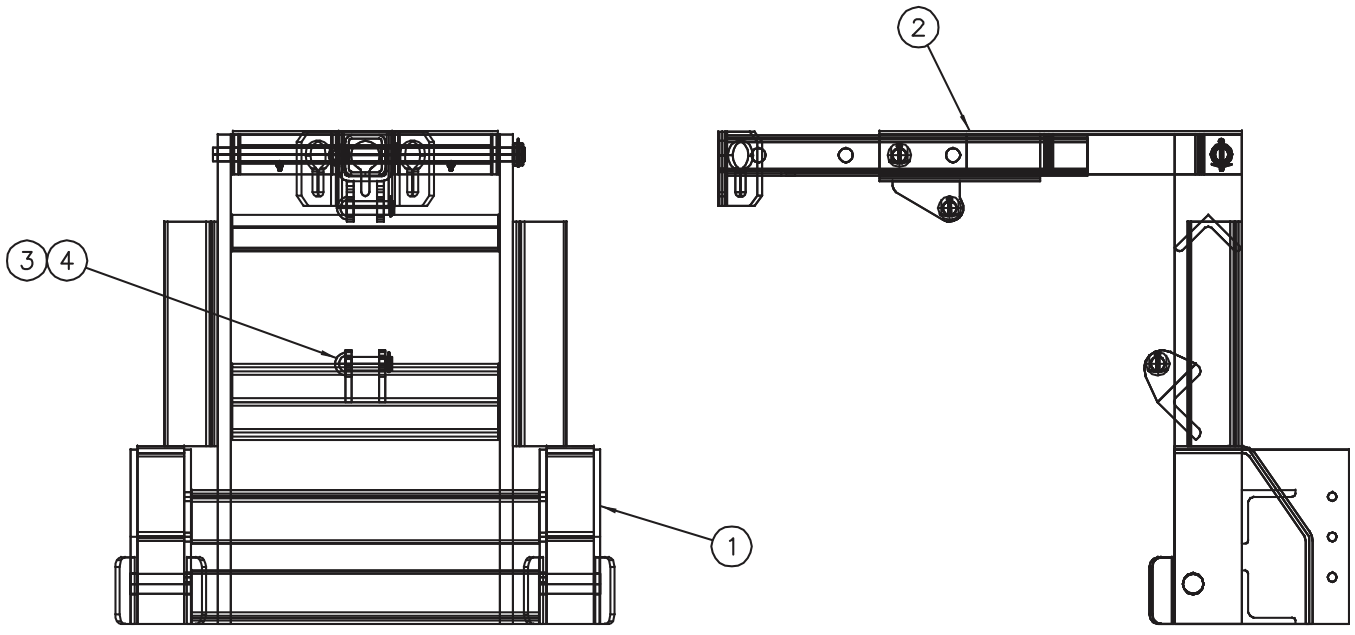


3. Clamp the frame mounting angles to the frame above the front axle. Angles must be located equal on both sides. Drill (3) $2\frac{1}{32}$ " holes through the frame mounting angles and the truck frame. Some notching of the mounting angles may be needed to allow air or brake lines to pass through the frame. Hole location may depend on the shape of the mounting angles after notching. **NOTE** -- When drilling use caution to avoid any hydraulic, air or brake lines on the inside of the truck frame. Apply rust inhibitor or paint to drilled holes.
4. Attach frame mounting angles to the truck frame using (3) $\frac{5}{8}$ " bolts, (6) $\frac{5}{8}$ " hardened washers and (3) $\frac{5}{8}$ " toplock nuts (not included). Tighten bolts just until snug. **NOTE**--The length of the bolts will depend upon the thickness of the frame and components.
5. Measure from the rear of the frame mounting angles to the side plate mounting holes located at the bottom of the hitch. Some trimming of the side plates may be necessary to obtain a proper fit. Allow the side plate to extend past the mounting holes 2" --3". **NOTE** -- Always trim the side plate from the square end and re-drill any holes needed. -- The side plates can be welded or bolted to the frame mounting angles.
6. Position each side plate as it will be installed on the truck and clamp in place. Some trimming of the side plates may be needed to ensure clearance of the suspension, cross member, etc. Re-install side plates and recheck clearance.
7. Fasten the side plate to the hitch and tack weld, or bolt, the side plate to the mounting angles once they are in the proper position. Tack weld a shear bar ($\frac{1}{2}$ " x 1" x 6" Bar) to each side plate directly behind the hitch mount plate. Remove the side plate and weld completely, omitting the front side of the reinforcing bar. **NOTE** -- Cross bracing and/or reinforcing bars may be needed for sever service (not included).

Installation Instructions for Universal Side Plates

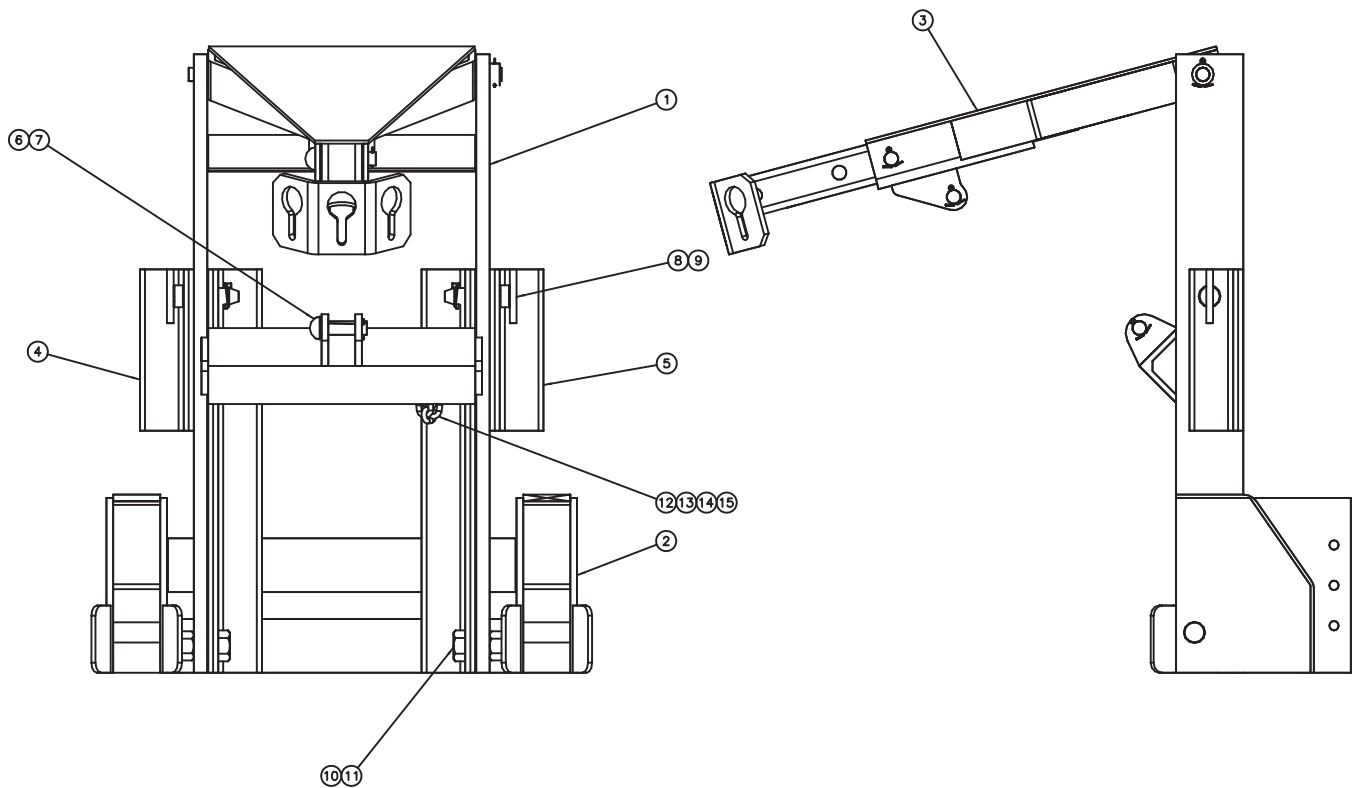
8. Touch up the side plate with paint and re-install on the truck. Tighten all bolts to specifications.
9. Side plates that are designed to attach to the outside of the truck frame are bolted directly to the hitch and truck frame. Some notching of the plates may be necessary to avoid the truck suspension or any components already attached to the truck frame. NOTE -- Cross bracing and/or reinforcing bars may be needed for severe service (not included).
10. Clamp side plates in place and drill holes as needed.
Note - Apply rust inhibitor or paint to drilled holes.
11. Tighten all bolts to specifications.
12. Put the wheels back on the truck, remove the jack stands and the rear wheel chocks.
Torque to spec.





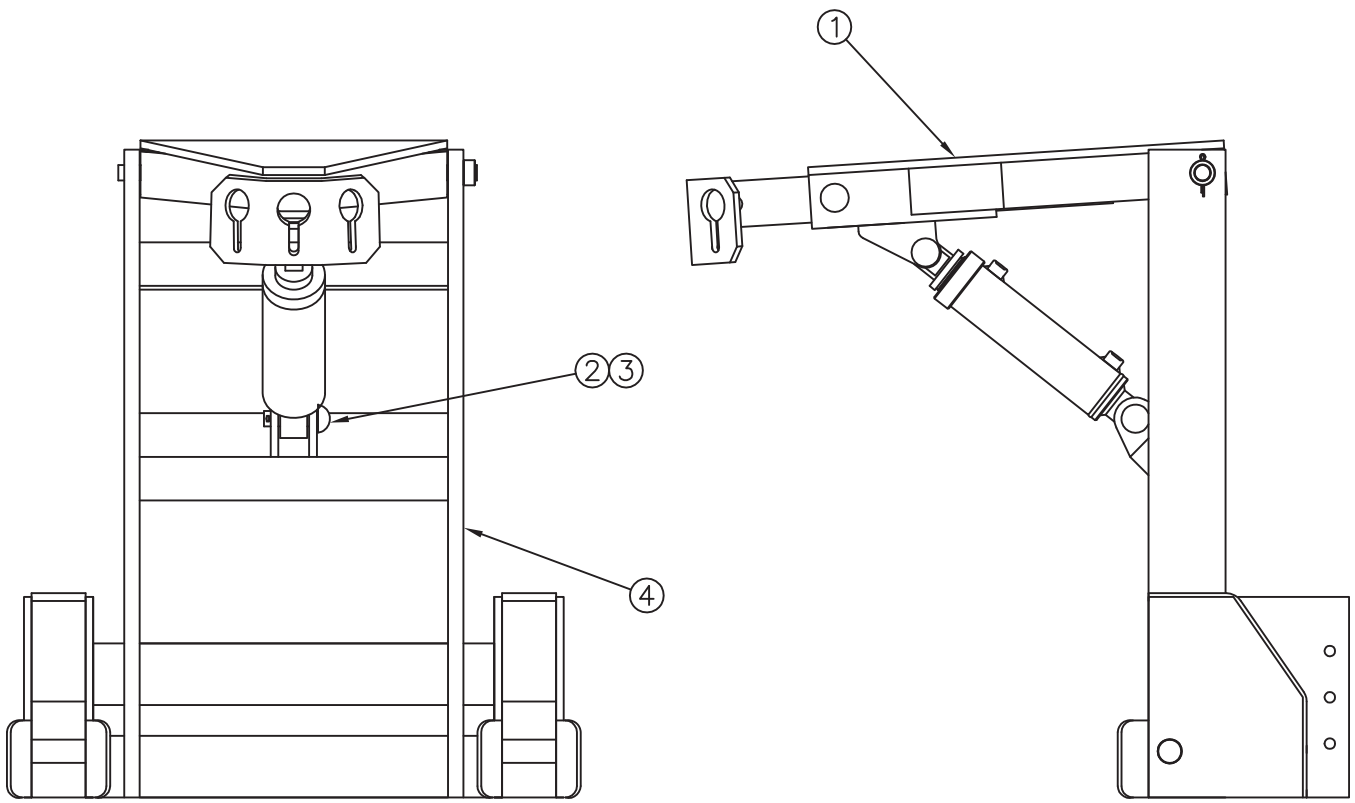
00015137 HITCH, TP, MTEQ, 1X5 BAR, LOW PROFILE

Item	Qty.	Part Number	Description
1	1	00088567	HITCH WLDMT,TP,MTEQ,1x5 BAR,
2	1	00023485	LIFT ARM ASSY,HITCH,STD <i>See This Page 20</i>
3	1	05022000	PIN 1.00 x 3.50 ROUND HEAD ZC
4	1	05022019	PIN .188 x 2.000 COTTER
5	1	05050498	MANUAL,HITCH

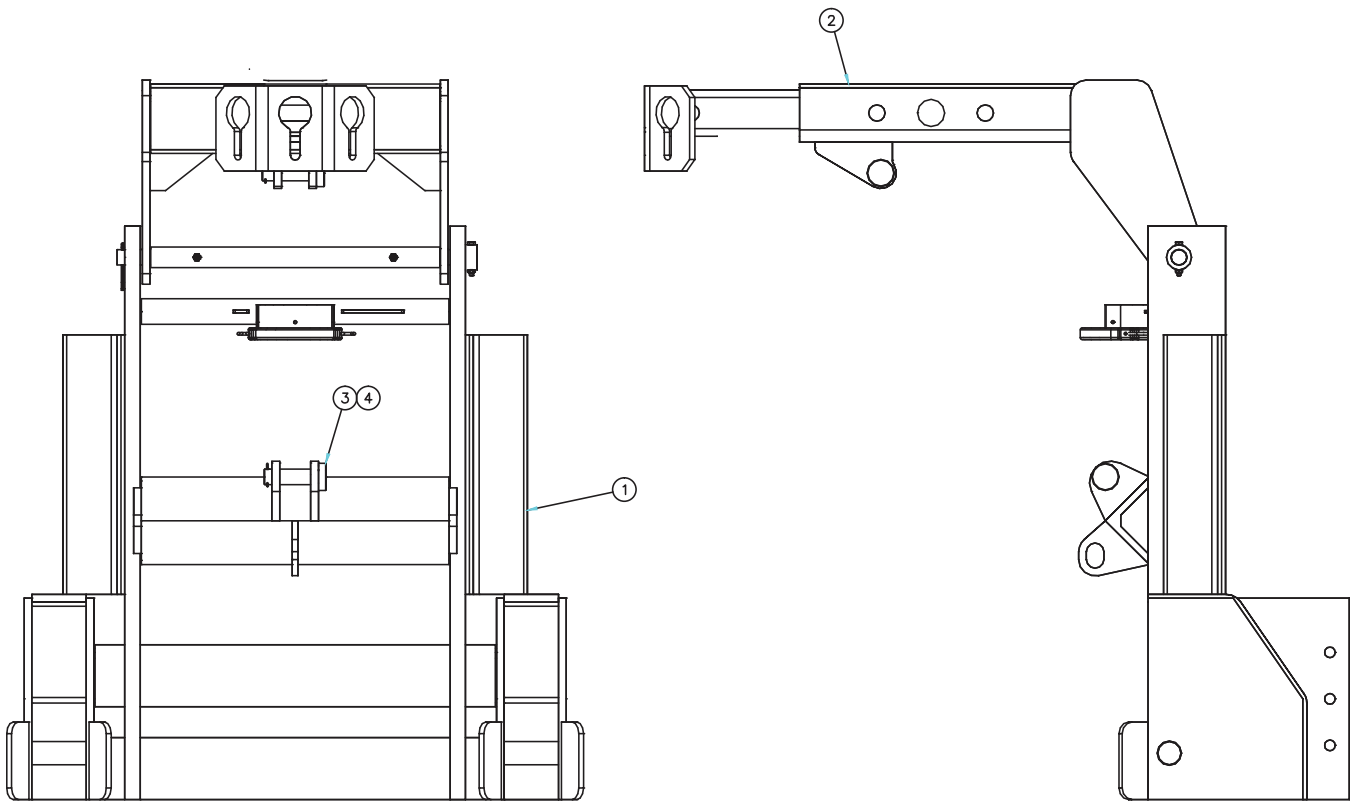


00023482 HITCH, TP, MTEQ, MC7082, TILT

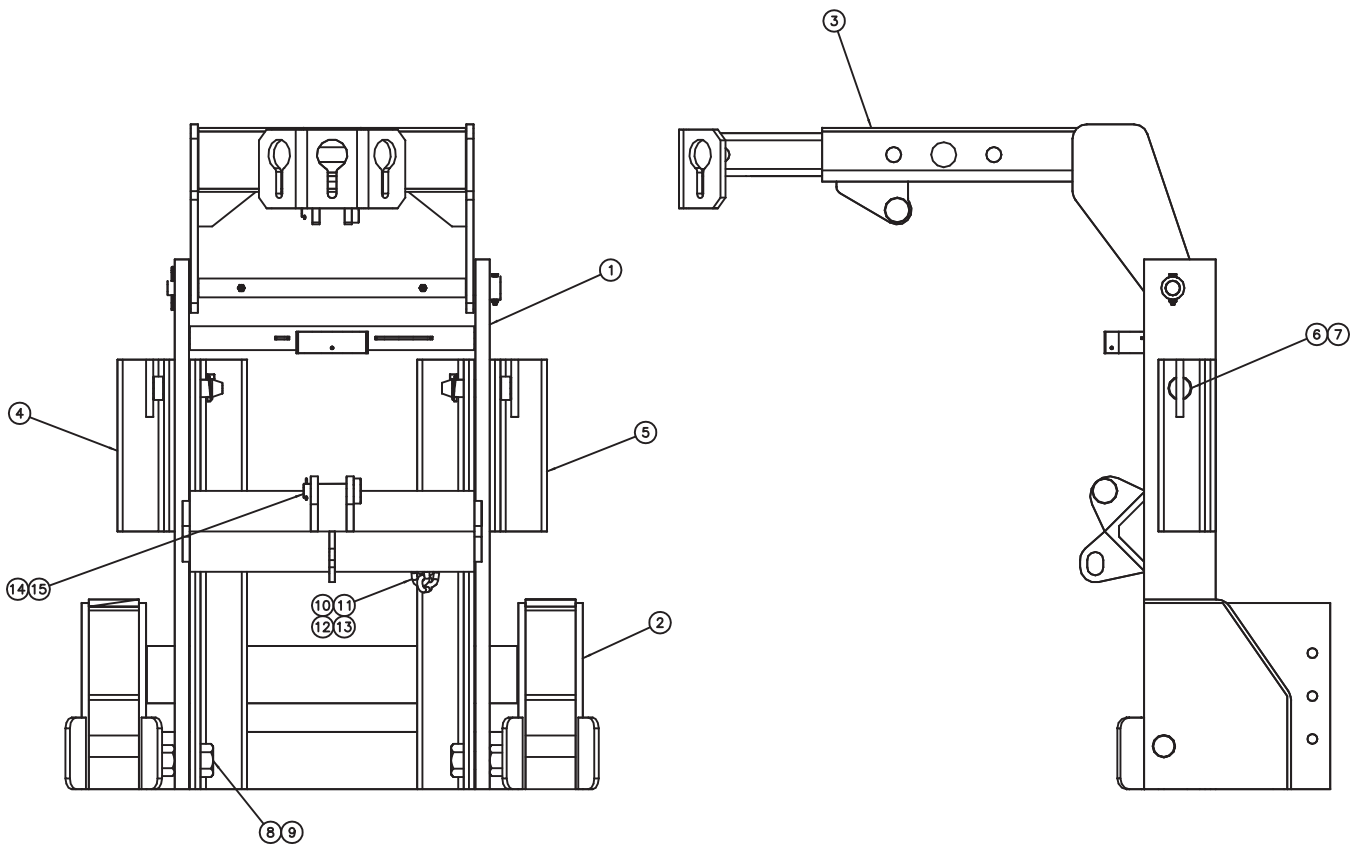
Item	Qty.	Part Number	Description
1	1	00030332	HITCH WLDMT,TP,MC7082,UPR,TILT
2	1	00025203	HITCH WLDMT,TP,MTEQ,MC7082,LWR
3	1	00023485	LIFT ARM ASSY,HITCH,STD <i>See This Page 20</i>
4	1	00087241	MTG ANGLE,HITCH,MC7082,RH
5	1	00087242	MTG ANGLE,HITCH,MC7082,LH
6	1	05022000	PIN 1.00 x 3.50 ROUND HEAD ZC
7	1	05022019	PIN .188 x 2.000 COTTER
8	2	00141752	PIN,MTG,RDS,W/T-HANDLE
9	2	05022106	PIN .188 LYNCH
10	2	05010850	BOLT 1.25-7 x 3.50 G8 HHCS ZC
11	2	05020835	NUT 1.25-7 GC TOPLOCK C&W
12	1	00087245	CHAIN,HIGH TEST, .375x12.000
13	2	05010645	BOLT .375-16 x 1.50 G8 HHCS ZC
14	2	05020898	NUT .375-16 GC TOPLOCK C&W
15	2	05021307	WASHER .375 FLAT ZC
16	1	05050498	MANUAL,HITCH



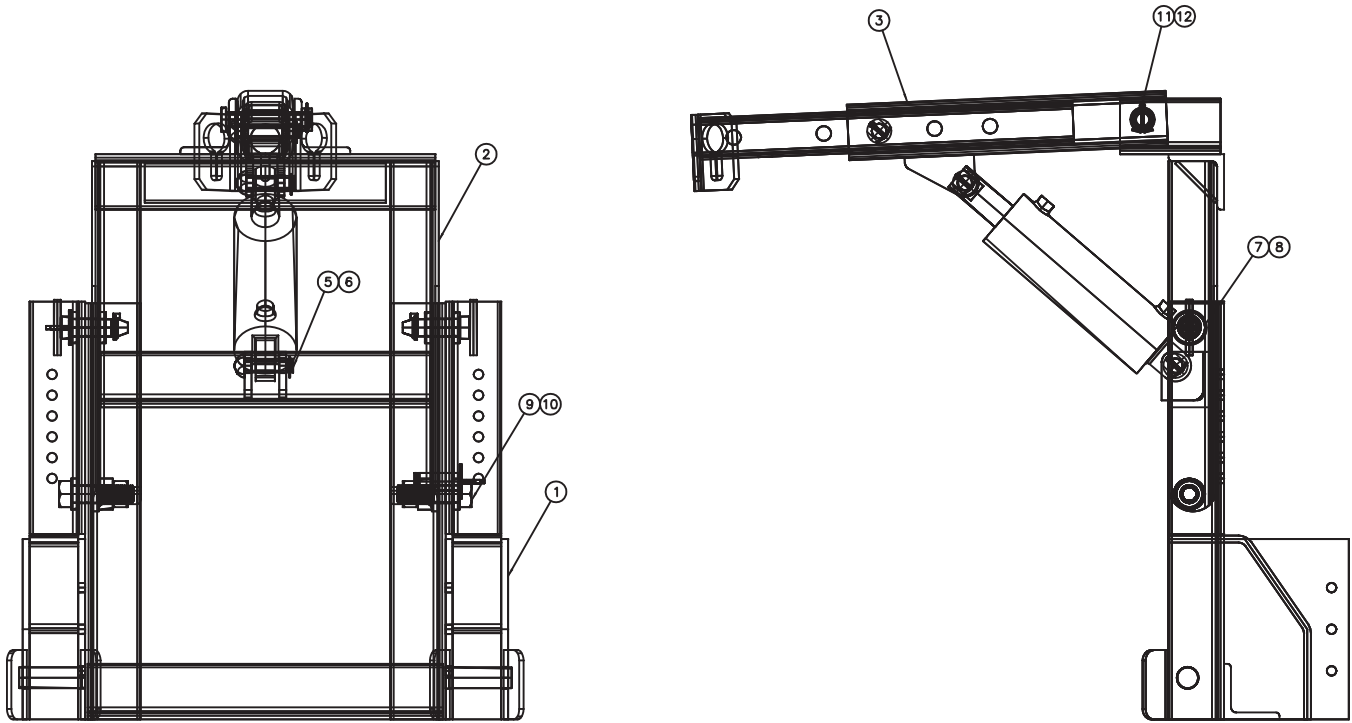
00023483 HITCH, TP, MTEQ, 1X5 BARS, LIFT ARM				
Item	Qty.	Part Number	Description	
1	1	00023485	LIFT ARM ASSY,HITCH,STD	<i>See This Page 20</i>
2	1	05022000	PIN 1.00 x 3.50 ROUND HEAD ZC	
3	1	05022019	PIN .188 x 2.000 COTTER	
4	1	00023496	NON-TILT HITCH ASSY	
5	1	05050498	MANUAL,HITCH	



00054392 HITCH, TP, MTEQ, MC7090, FFLA			
Item	Qty.	Part Number	Description
1	1	00052526	HITCH WLDMT,TP,MTEQ,MC7082,1x5 BAR
2	1	00052527	LIFT ARM ASSY,HITCH,OFFSET <i>See This Page 21</i>
3	1	05022000	PIN 1.00 x 3.50 ROUND HEAD ZC
4	1	05022019	PIN .188 x 2.00 COTTER
5	1	TS9	MISC, STRAP TARP 9"
6	1	05050498	MANUAL,HITCH,QUICK HITCH
7	2	9225	MISC, HOOK TARP

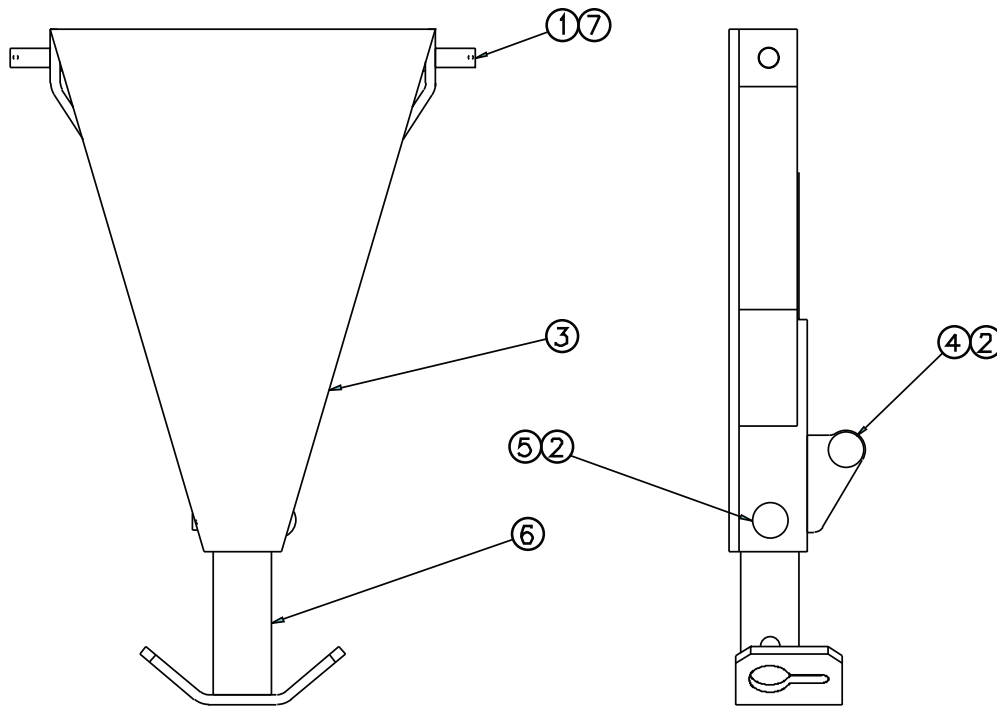


00102712 HITCH, TP, MTEQ, MC7092, FFLA, TILT			
Item	Qty.	Part Number	Description
1	1	00102713	HITCH WLDMT,TP,MC7082,TILT,UPR
2	1	00102715	HITCH WLDMT,TP,MTEQ,MC7082,TILT,LWR
3	1	00052527	LIFT ARM ASSY,HITCH,OFFSET <i>See This Page 21</i>
4	1	00087241	MOUNTING ANGLE,HITCH,MC7082,RH
5	1	00087242	MOUNTING ANGLE,HITCH,MC7082,LH
6	2	00141752	PIN,MTG,RDS,W/T-HANDLE,ZC
7	2	05022106	PIN .188 LYNCH
8	2	05010850	BOLT 1.250-7 x 3.500 G8 HHCS ZC
9	2	05020835	NUT 1.250-7 GC TOPLOCK C&W
10	1	00087245	CHAIN .375 x 12.000 (9 LINKS)
11	2	05010645	BOLT .375-16 x 1.50 G8 HHCS ZC
12	2	05020898	NUT .375-16 GC TOPLOCK C&W
13	2	05021307	WASHER .375 FLAT ZC
14	1	05022000	PIN 1.000 x 3.500 ROUND HD ZC
15	1	05022019	PIN .188 x 2.000 COTTER ZC
16	1	TS9	MISC, STRAP TARP 9"
17	1	05050498	MANUAL,HITCH,QUICK HITCH
18	2	9225	MISC, HOOK TARP



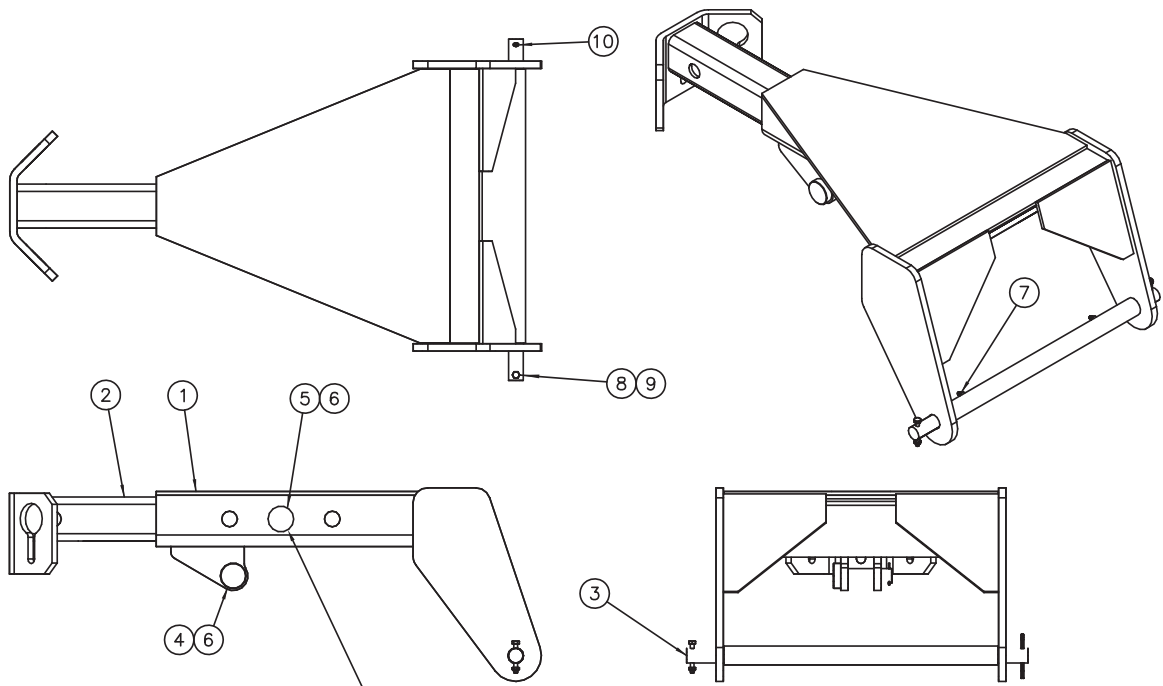
00010677 HITCH, TP, MTEQ, MC7111, TILT LIFT ARM

Item	Qty.	Part Number	Description
1	1	00012354	HITCH WLDMT,TP,MTEQ,MC7111,LWR,W/QUICK HITCH RECEIVER BOO
2	1	00010457	HITCH WLDMT,TP,MC7111,UPPER
3	1	00021373	LIFT ARM ASSY,MC7101,LIFT ARM MC7101 See This Page 22
4	1	SEE NOTE 1	HYDRAULIC CYLINDER
5	1	05022019	PIN .188 x 2.00 COTTER
6	1	05022000	PIN 1.00 x 3.50 ROUND HEAD ZC
7	2	00141752	PIN,MTG,RDS,W/T-HANDLE,ZC
8	2	05022106	PIN .188 LYNCH
9	2	05010853	BOLT 1.25-7 x 4.50 G8 HHCS ZC
10	2	05020835	NUT 1.25-7 GC TOPLOCK C&W
11	1	05022031	PIN .188 x 2.50 COTTER
12	1	05022076	PIN 1.0 x 6.0 RD HD ZINC,LIFT ARM PIVOT
13	1	05050498	MANUAL,HITCH,QUICK HITCH



00023485 LIFT ARM ASSEMBLY, HITCH, STD

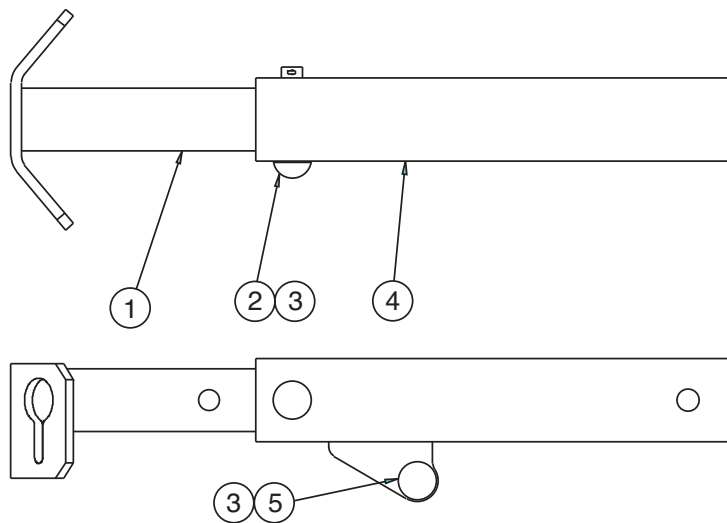
Item	Qty.	Part Number	Description
1	1	00110837	PIVOT ROD, LIFT ARM
2	2	05022019	PIN, .188 X 2, COTTER, ZINC
3	1	00023493	UPPER LIFT ARM WELDMENT
4	1	05022000	PIN, MUSHROOM HD, 1 X 3.5
5	1	05022077	PIN, MUSHROOM HD, 1 X 4.5
6	1	00097978	LIFT ARM WELDMENT, HITCH, INNER
7	2	05022031	PIN, .188 X 2.5, COTTER, ZINC
8	2	05050288	GREASE ZERK, .250-28 STR THREAD



INSERT PIN FOR LIFT ARM
IN MIDDLE HOLE.
THIS ALLOWS HITCH TO
STAND UPRIGHT WHILE
BEING STORED.

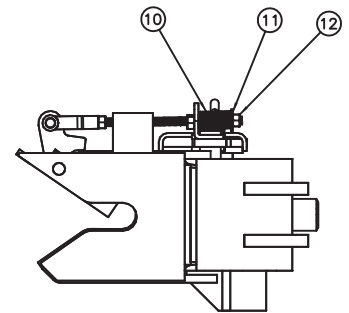
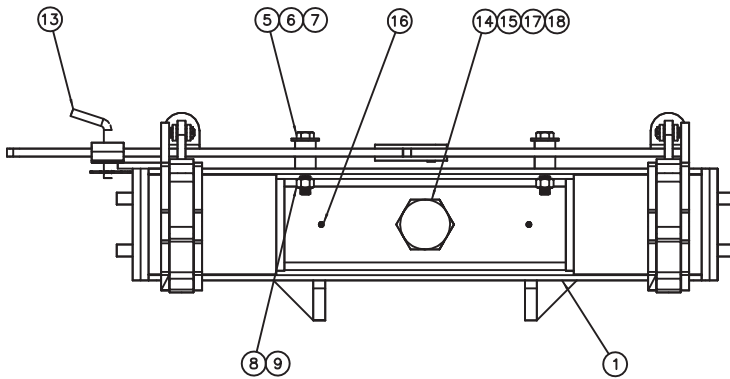
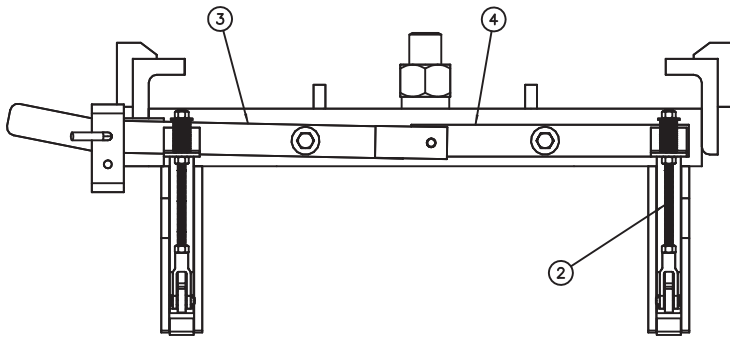
00052527 LIFT ARM ASSEMBLY, HITCH, OFFSET

Item	Qty.	Part Number	Description
1	1	00052528	LIFT ARM WLDMT,HITCH,OFFSET,
2	1	00052536	LIFT ARM WLDMT,HITCH,OFFSET,
3	1	00110837	PIVOT ROD,LIFT ARM,HITCH,STD
4	1	05022000	PIN 1.00 x 3.50 ROUND HEAD ZC
5	1	05022077	PIN,1.000 DIA x 4.144 GL,ZC PL
6	2	05022019	PIN .188 x 2.000 COTTER
7	2	05050288	GREASE FITTING, .250-28 UNF ST
8	1	05010597	BOLT .250-20 x 2.00 G8 HHCS ZC
9	1	05020899	NUT .250-20 GC TOPLOCK C&W
10	1	05022031	PIN .188 x 2.500 COTTER



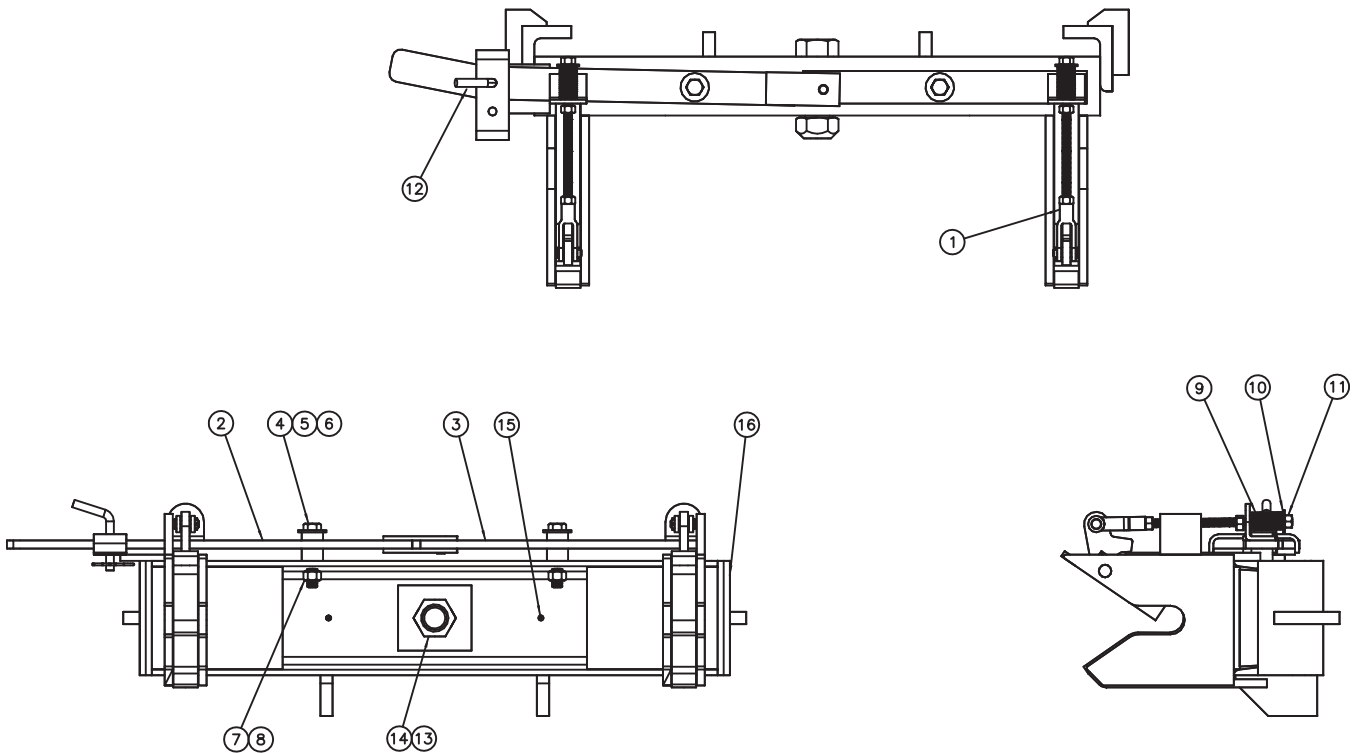
00021373 LIFT ARM ASSEMBLY, HITCH, MC7101

Item	Qty.	Part Number	Description
1	1	00021324	LIFT ARM WELDMENT, HITCH, MC7101
2	1	05022077	PIN, 1 X 4.5, BUTTON HEAD, ZINC
3	2	05022019	PIN, .188 X 2, COTTER
4	1	00021371	LIFT ARM TUBE, OUTER, MC7101
5	1	05022000	HITCH PIN, 1" X 3.5"

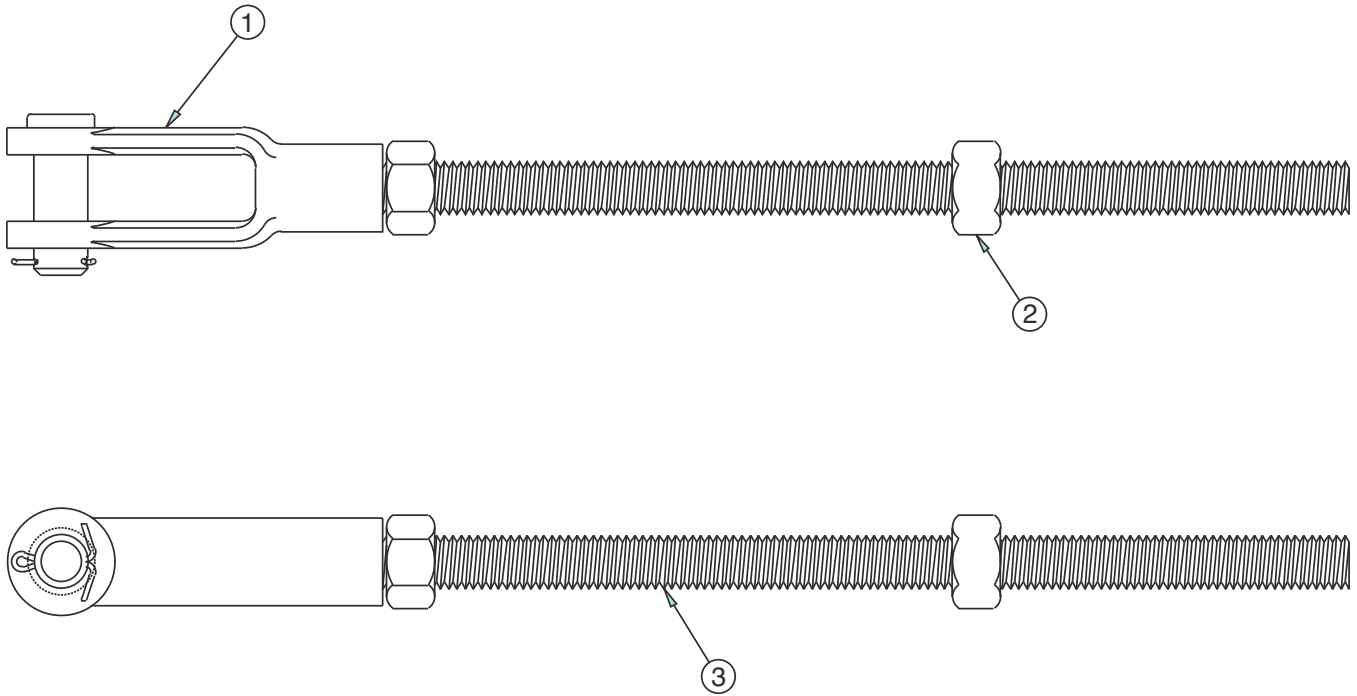


00047577 HITCH, PP, MTEQ, 30.5, MC6000, 2.0 BOLT ON, 2.0

Item	Qty.	Part Number	Description
1	1	00047578	HITCH WLDMT,PP,MTEQ,MC6000
2	2	00078020	CONTROL ROD ASSY,HITCH,MC6000 <i>See This Page 25</i>
3	1	00078015	HANDLE,LATCHING,TO JAW BLOCK
4	1	00078019	HANDLE,PIVOT,TO JAW BLOCK
5	2	00010437	PIVOT TUBE
6	2	05021311	WASHER .625 FLAT ZC
7	2	05010745	BOLT .625-11 x 3.50 G8 HHCS ZC
8	2	05021383	WASHER .625 LOCK HVY ZC
9	2	05020270	NUT .625-11 G8 HEX ZC
10	2	05035044	SPRING,COMP, .968"OD,2.5"OAL
11	2	05021309	WASHER .500 FLAT ZC
12	2	05020847	NUT .500-13 GC TOPLOCK C&W
13	1	05022142	PIN .5 x 3 BENT ZC
14	1	00030395	BOLT,MODIFIED,SWIVEL PL
15	1	05020900	NUT 2.00-4.5 CASHEX ZC
16	2	05050288	GREASE ZERK, .250-28 STRAIGHT
17	1	05022139	PIN .375 x 5.000 COTTER ZC
18	1	00130411	BUSHING,3.00 ODx2.063 IDx.750

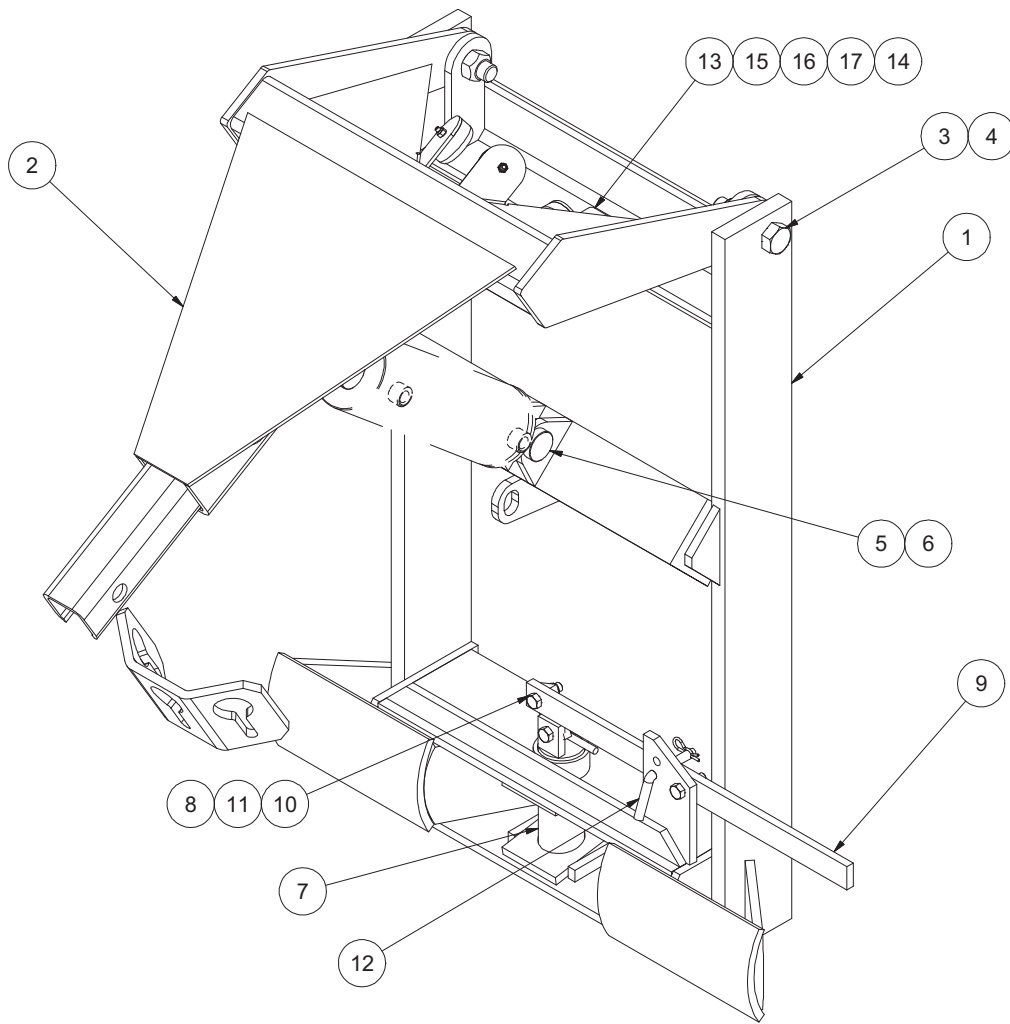


00023451 & 00023450 HITCH,PP,MTEQ,30.5,MC6000, BOLT-ON,1.0 PUSH P			
Item	Qty.	Part Number	Description
1	2	00078020	CONTROL ROD ASSY,HITCH,MC6000 <i>See This Page 25</i>
2	1	00078015	HANDLE,LATCHING,TO JAW BLOCK,MC6000
3	1	00078019	HANDLE,PIVOT,TO JAW BLOCK
4	2	00010437	PIVOT TUBE
5	2	05021311	WASHER .625 FLAT ZC
6	2	05010745	BOLT .625-11 x 3.50 G8 HHCS ZC
7	2	05021383	WASHER .625 LOCK HVY ZC
8	2	05020270	NUT .625-11 G8 HEX ZC
9	2	05035044	SPRING,COMP,.968"OD,2.5"OAL,.125WIRE,MW
10	2	05021309	WASHER .500 FLAT ZC
11	2	05020847	NUT .500-13 GC TOPLOCK C&W
12	1	05022142	PIN .5 x 3 BENT ZC,2.5"USABLE LGTH INC:BRIDGE PIN
13	1	05010853	BOLT 1.25-7 x 4.50 G8 HHCS ZC
13	1	05010871	BOLT 1.50-6 x 5.00 G8 HHCS ZC
14	1	05020835	NUT 1.25-7 GC TOPLOCK C&W
14	1	05020806	NUT 1.50-6 GC TOPLOCK C&W
15	2	05050288	GREASE ZERK,.250-28 STRAIGHT THREADED
16	1	00042529	HITCH WLDMT,PP,MTEQ,MC6000,30.5,1.50,BOLT-ON,1.0 PUSH PL
16	1	00042528	RECEIVER WLDMT,1.281 DIA,MC6000 RECEIVE



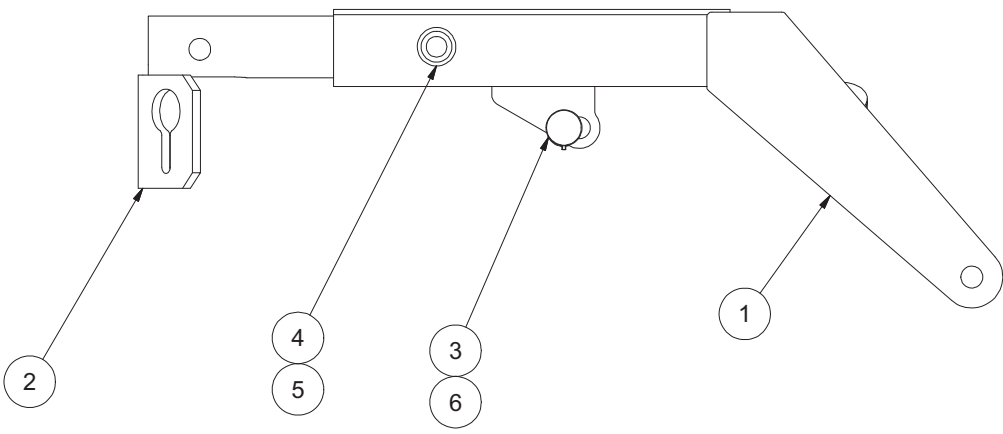
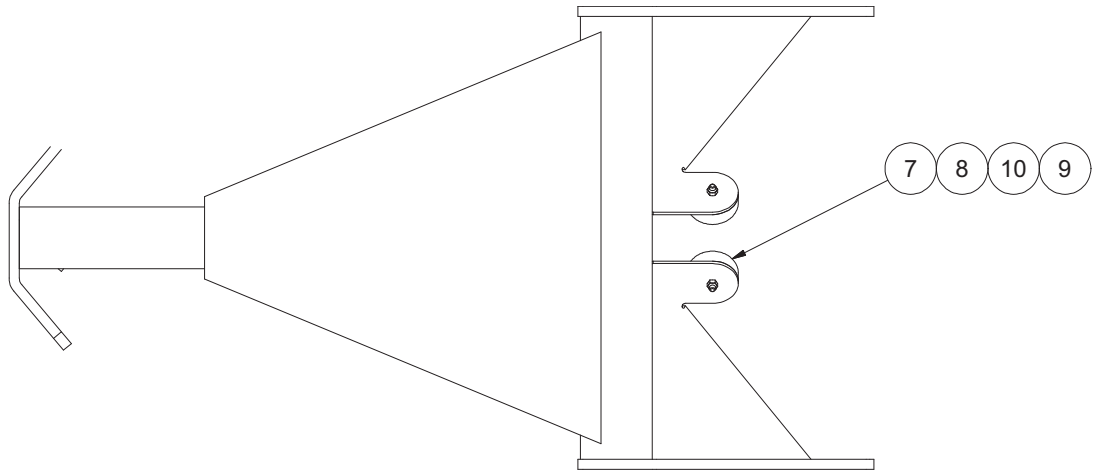
00078020 CONTROL ROD ASSEMBLY, HITCH, MC6000

Item	Qty.	Part Number	Description
1	1	05022161	CLEVIS & PIN KIT, HITCH, MC6000
2	2	05020268	NUT, .5-13, G8, HEX, ZINC
3	1	00025244	ROD, THREADED, .5-13 X 10



00023329 HITCH, TP, GLED, MC2075, FFLA

Item	Qty.	Part Number	Description
1	1	00124797	HITCH WLDMT,TP,GLED,MC2075
2	1	00126778	LIFT ARM ASSY,HITCH,TP,MC2075 <i>See This Page 27</i>
3	2	05010818	BOLT 1.00-8 x 4.00 G8 HHCS ZC
4	2	05020834	NUT 1.00-8 GC TOPLOCK C&W
5	1	05022000	PIN 1.00 x 3.50 ROUND HEAD ZC
6	1	05022019	PIN .188 x 2.000 COTTER
7	1	00021304	PIN WLDMT,LOCKING,HITCH,MC801
8	1	00021310	BRACKET,LINKAGE,HITCH,MC801
9	1	00021311	HANDLE,HITCH,MC801
10	3	05010692	BOLT .500-13 x 1.75 G8 HHCS ZC
11	3	05020847	NUT .500-13 GC TOPLOCK C&W
12	1	05022142	PIN,BENT .5"x3" SHANK LGTH
13	1	00126781	MTG BRACKET,STOP,CYLINDER
14	1	RB0037	BUMPER,RUBBER,2.500 DIA
15	3	05010594	BOLT .250-20 x 1.25 G8 HHCS ZC
16	3	05021305	WASHER .250 FLAT ZC
17	3	05020536	NUT .250-20 G2 NYLON LOCK ZC

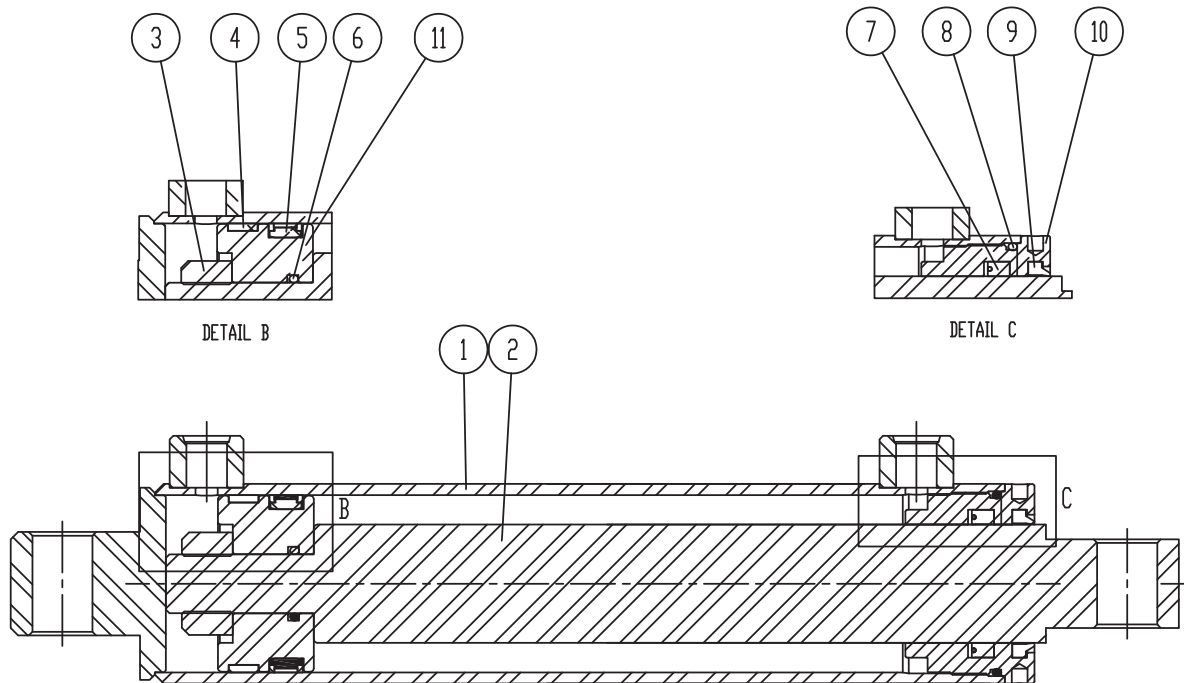


00126778 LIFT ARM ASSEMBLY, HITCH, TP, MC2075 FFLA			
Item	Qty.	Part Number	Description
1	1	00125300	LIFT ARM WLDMT, OUTER, HITCH, TP
2	1	00128040	LIFT ARM WLDMT, HITCH, INNER
3	1	05022000	PIN 1.00 x 3.50 ROUND HEAD ZC
4	1	05022077	PIN 1.00 x 4.50 ZC
5	1	05022019	PIN .188 x 2.000 COTTER
6	1	05022106	PIN .188 LYNCH
7	2	RB0037	BUMPER, RUBBER, 2.500 DIA
8	2	05010594	BOLT .250-20 x 1.25 G8 HHCS ZC
9	2	05020536	NUT .250-20 G2 NYLON LOCK ZC
10	2	05021305	WASHER .250 FLAT ZC

Cylinders

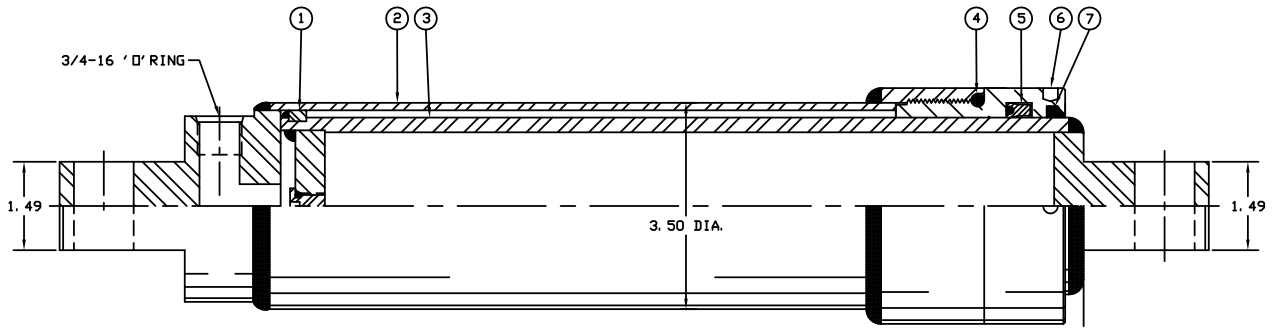
05002714 CYLINDER, 3 X 10, DA, LIFT, IN-LINE WITH MOUNT

BEST METAL	ITEM	QTY	PART #	DESCRIPTION
	1	1	N/A	JACKET ASSEMBLY
	2	1	N/A	ROD ASSEMBLY, NITROBAR
	3	1	N/A	LOCK NUT
	4	1	*	WEAR RING
	5	1	*	DYNAMIC SEAL
	6	1	*	O-RING
	7	1	*	POLY PAK
	8	1	*	O-RING
	9	1	*	ROD WIPER
	10	1	05003339	GLAND NUT
	11	1	05003340	PISTON, WEAR RING
			05003225	SEAL KIT (Includes all parts marked with an *)



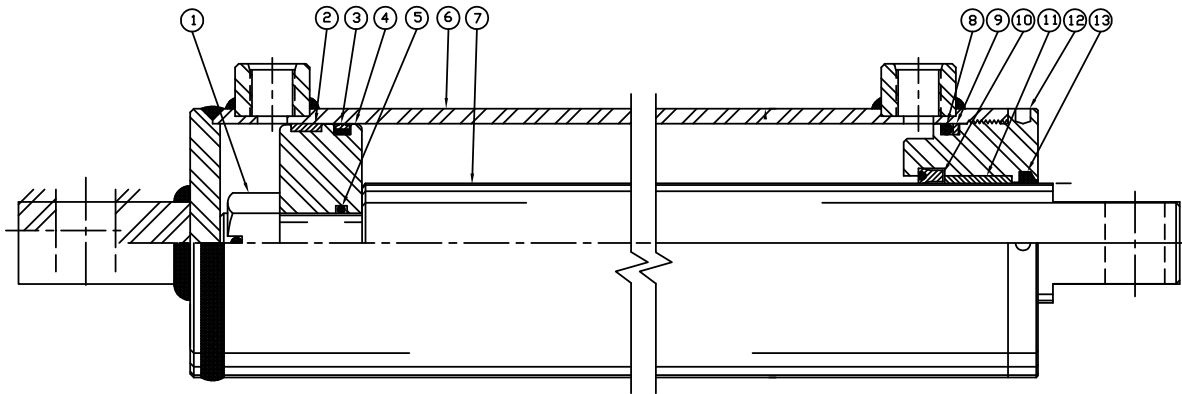
05000017 CYLINDER, 3x10, SA, .75-16 ORB 18 PIN CENTERS

<i>BEST METAL</i>	ITEM	QTY	PART #	DESCRIPTION
	1	1	---	PISTON LOCK RING
	2	1	---	JACKET ASSEMBLY
	3	1	---	PISTON ROD ASSEMBLY
	4	1	---	O-RING
	5	1	---	POLY PAK
	6	1	05002938	GLAND NUT
	7	1	---	ROD WIPER
			05002920	SEAL KIT (Items 4-5 & 7)

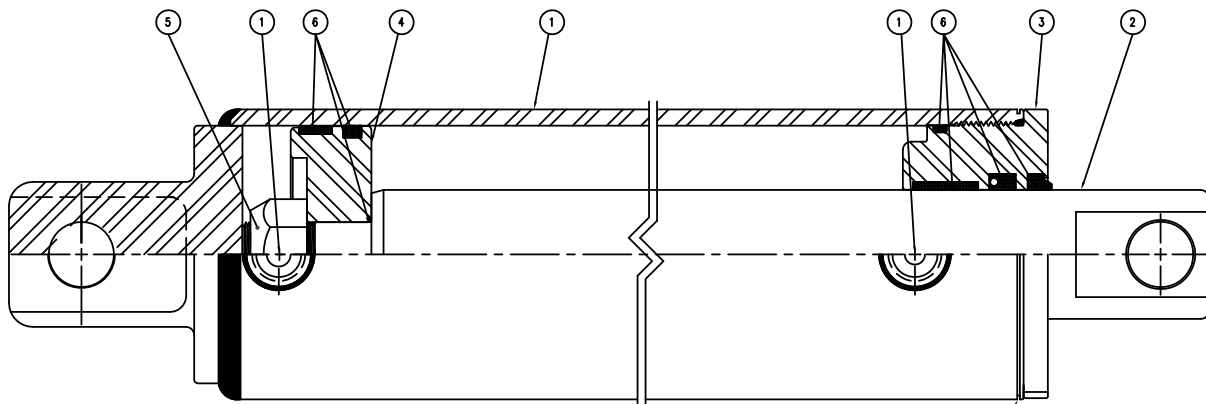


05002953 CYLINDER, 4x10 DA, NITRIDED ROD, .75 ORB

<i>BEST METAL</i>	ITEM	QTY	PART #	DESCRIPTION
	1	1	---	CONICAL TOP LOCK
	2	1	---	WEAR RING
	3	1	---	PSP SEAL
	4	2	---	PISTON
	5	2	---	O-RING
	6	1	---	JACKET ASSEMBLY
	7	1	05003157	PISTON ROD
	8	1	---	O-RING
	9	1	---	BACKUP WASHER
	10	1	---	POLY PAK
	11	1	---	BRONZE LINER
	12	1	05002960	HEADSTOCK
	13	1	---	ROD WIPER
			05002855	SEAL KIT

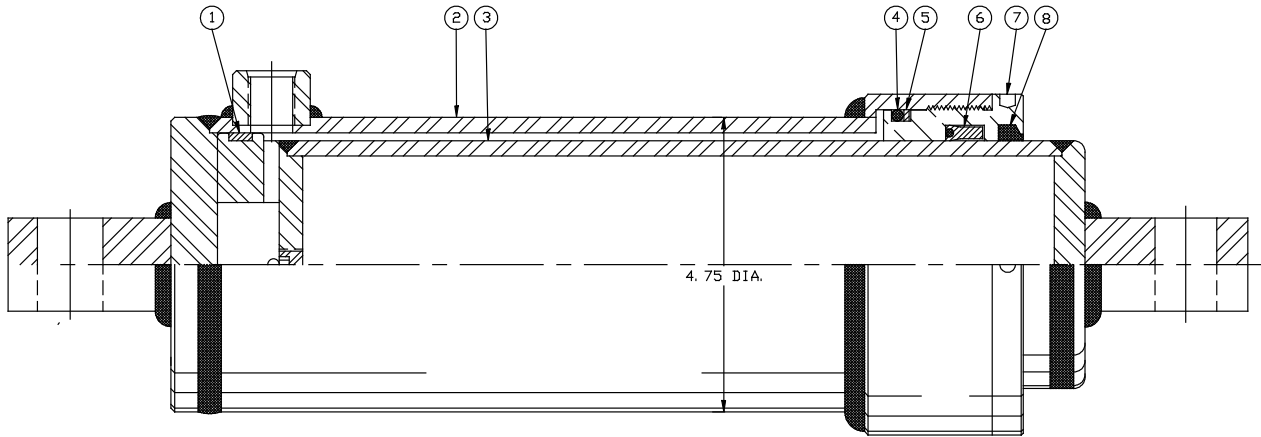


<i>DIREKT FORCE</i>	ITEM	QTY	PART #	DESCRIPTION
	1	1	---	BODY SUB ASSEMBLY
	2	1	05003243	ROD
	3	1	05003245	GLAND
	4	1	05003244	PISTON
	5	1	---	HARDWARE KIT
	6	1	05003265	SEAL KIT



05002615 CYLINDER, 4x10, SA, .75-16ORB 19 PIN CENTERS

<i>BEST METAL</i>	ITEM	PART #	DESCRIPTION
	1	05002396	WEAR RING
	2	---	JACKET ASSEMBLY
	3	---	PISTON ROD ASSEMBLY
	4	---	O-RING
	5	---	BACKUP WASHER
	6	05002397	POLY PAK
	7	05003354	GLAND NUT
	8	05002389	ROD WIPER
		05002950	SEAL KIT



MONROE TRUCK EQUIPMENT, INC. WARRANTY SNOW & ICE CONTROL PRODUCTS

Monroe Truck Equipment, Inc. warrants to the original purchaser, that if any part of the product proves to be defective in workmanship or material within **ONE YEAR** of the original installation, and is returned to us within 30 days of the discovered defect, we will (at our option) repair or replace the defective part. This warranty does not apply to damage resulting from misuse, neglect, accident, improper installation, normal wear items or lack of maintenance. This warranty is exclusive and supersedes all other warranties, whether expressed or implied. **Monroe Truck Equipment, Inc.** neither assumes, nor authorizes anyone to assume for it, any other obligation or liability in connection with this warranty and will not be liable for consequential damages.

All engines, pumps, motors, cylinders and valves are warranted by their manufacturer and not by **Monroe Truck Equipment, Inc.**. The manufacturer's warranty will apply to these parts. Electrical and hydraulic components are not to be disassembled without the express written permission of Monroe Truck Equipment. Use of replacement parts other than original equipment voids this warranty.

All defective parts returned must be accompanied by the model number, serial number, date installed, date of defect, description of defect, and the name of the distributor from whom it was purchased. All warranty claims must have prior written approval from **Monroe Truck Equipment, Inc.**

Please return the warranty registration card that accompanies this manual to confirm receipt of this parts catalog and acknowledge the information contained within. Failure to return the attached card may result in a voided warranty.



**1051 West 7th Street
 Monroe, WI 53566
 608-328-8127 ~ Fax: 608-328-4278**

Warranty Policy Uninstalled Parts and Equipment Provided by Monroe Truck Equipment

Monroe Truck Equipment will provide the following limited warranty for a period of one year to the original purchaser of all uninstalled goods provided by Monroe Truck Equipment:

LIMITED WARRANTY: All goods provided by Monroe Truck Equipment (MTE) will be free from defects in material and workmanship for a period of one year from the date of purchase by the original purchaser. This limited warranty shall be the sole and exclusive remedy for any such product found to be defective. This limited warranty supercedes all previous warranties and is exclusive and in lieu of all other warranties, whether expressed or implied.

This limited warranty applies only to parts or accessories manufactured by MTE and/or provided by same. Except with respect to title, this limited warranty does not pertain to parts or accessories not manufactured and/or provided by MTE, regardless of whether such parts or accessories were selected and/or recommended by MTE. MTE will, as a service to the buyer, pass on any warranties received from the original manufacturer of MTE provided parts and/or accessories.

MTE will not under any circumstances be liable for any incidental or consequential damages whether in tort, contract, or otherwise, for any bodily injury, death, property damage, loss of use, or loss of income resulting from or in any way arising out of any goods provided by MTE, or their sale, use, or manufacture.

Any warranty claim deemed to be arising from the result of misuse, abuse, neglect, accident, improper installation, lack of maintenance, act of war (whether declared or otherwise), or act of God will be denied. Any repair or modification by the buyer or any third party, without the prior written consent of MTE, will void any possible warranty compensation. Any damage deemed to be the result of abnormal operation will not be compensated by this warranty.

Normal or special maintenance items such as fuels, fluids, tires, belts, hoses, filters, air cleaners, light bulbs, and any other items subject to normal wear and tear that are supplied in connection with goods provided by MTE are not allowed under this warranty.

All engines, pumps, cylinders, valves, and motors are warranted by their manufacturer and not by Monroe Truck Equipment. The manufacturer's warranty will apply to these parts. Electrical and hydraulic components are not to be disassembled without the express written consent of MTE. Any disassembly of MTE provided components without prior authorization will void the applicable warranty.

Monroe Truck Equipment shall be the sole and final determining authority as it applies to the administration of this warranty policy. Purchaser acknowledges receipt of Monroe Truck Equipment Warranty Policy and agrees to be bound by same.



GLOBAL SOLUTIONS
 ARMORED VEHICLES ~ SPORT TRUCK CONVERSIONS
 MUNICIPAL SNOW & ICE CONTROL ~ FIRE APPARATUS
 PICKUP TRUCK ACCESSORIES ~ TRUCK EQUIPMENT/MODIFICATIONS





**1051 West 7th Street
Monroe, WI 53566
608-328-8127 ~ Fax: 608-328-4278**

Any and all warranty claims must be forwarded to MTE within 10 days of defect discovery. A copy of the original Monroe Truck Equipment invoice as well as the manufacturer's model number, serial number, and date of installation must accompany all correspondence regarding said claims. MTE will, at their option, choose whether to repair or replace the defective part unless otherwise specified by the original manufacturer of said part.

Procedures for Warranty Claims Notification

For submission of any warranty claim please contact Monroe Truck Equipment – Warranty Department at 800-356-8134

The following documentation will be needed when you call for initial warranty authorization:

1. A copy of the original MTE invoice.
2. Make, Model, and VIN or Serial Number of the equipment involved.
3. Part number and serial number of the part in question.
4. A complete description of the problem.

The following must accompany any claims submitted to Monroe Truck Equipment:

1. Documented photographs of any physical damage.
2. Inspection notes by MTE personnel or MTE authorized 3rd party.
3. Authorization number issued by Monroe Truck Equipment – Warranty Department.

Defective parts must be returned to Monroe Truck Equipment (freight prepaid) within 30 days of issuance of Authorization Number.

Monroe Truck Equipment reserves the right to void any warranty for failure to comply with Monroe Truck Equipment Warranty Policy.

This policy is effective October 11, 2012

