



# **Parts and Installation Manual**

**for**

## **Rear Cross Conveyor 103 Series**



**Monroe Snow & Ice Control**  
A Division of Monroe Truck Equipment  
1051 W. 7th Street  
Monroe, WI 53566  
Phone: 608-328-8127  
Fax: 608-329-8488

**05050749-8**  
**4/28/2014**




# TABLE OF CONTENTS

<b>SAFETY INSTRUCTIONS</b>	<b>Page 2</b>
<b>MAINTENANCE INSTRUCTIONS</b>	<b>Page 3</b>
<b>LUBRICATION CHART</b>	<b>Page 4</b>
<b>HYDRAULIC SCHEMATICS</b>	<b>Page 5</b>
<b>HYDRAULIC TROUBLE SHOOTING</b>	<b>Page 6</b>
<b>INSTALLATION INSTRUCTIONS</b>	<b>Page 7-9</b>
<b>REAR CROSS CONVEYOR EXTENSION</b>	<b>Page 10-11</b>
<b>CROSS CONVEYOR SPINNER INSTALLATION</b>	<b>Page 12</b>
<b>OPERATING INSTRUCTIONS</b>	<b>Page 13</b>
<b>GENERAL INFORMATION</b>	<b>Page 14</b>
<b>REPLACEMENT PARTS</b>	<b>Page 16-45</b>
<b>LEG KITS (00088888 &amp; 00049850)</b>	<b>Page 46-47</b>
<b>HOW TO ORDER PARTS</b>	<b>Page 48</b>
<b>RETURN POLICY</b>	<b>Page 48</b>
<b>WARRANTY INFORMATION</b>	<b>Page 49-51</b>

## SAFETY INSTRUCTIONS

- Read all installation, safety and maintenance instructions completely before operating this equipment.
- Keep all personnel clear of moving parts while equipment is being operated.
- Do not operate equipment in need of maintenance!  
Repair immediately!
- While operating this equipment use common sense, use caution, be alert and be safety-conscious.
- Do not work on the spreader unless it is solidly supported and the truck engine is off!
- Truck engine and hydraulic system is to be completely shut down prior to any maintenance or repairs.



**! DANGER**

**AVOID HIGH-PRESSURE FLUIDS**

Escaping fluid under pressure can penetrate the skin causing serious injury.

Avoid the hazard by relieving pressure before disconnecting hydraulic or other lines. Tighten all connections before applying pressure.

Search for leaks with a piece of cardboard. Protect hands and body from high pressure fluids.

If an accident occurs, see a doctor immediately. Any fluid injected into the skin must be surgically removed within a few hours or gangrene may result.

# MAINTENANCE INSTRUCTIONS




## In Season:

- Check chain, sprockets, bearings, all wear items, and loose bolts and nuts daily, and re-torque before use. (Failure to inspect equipment on a daily basis may seriously affect safety and/or efficiency.)
- Check all hydraulic fittings for tightness and/or damage on a regular basis.
- Lubricate all grease fittings. Refer to chart on page 4.
- Due to the nature of use and environment this equipment is operating in, damage and wear may occur at any time. Therefore, **Monroe Truck Equipment** recommends the end user establish, and follow, a daily inspection routine before using this equipment.
- To adjust belt tracking, tighten/loosen, adjuster bolts to get desired results.

## Off Season: *(If Applicable)*

- Use care when disconnecting hydraulic lines to assure that no dirt or foreign object enters the hydraulic system. Use caps to cover hydraulic hose fittings and insert plugs into hydraulic ports.
- Thoroughly clean, lubricate and repaint (if necessary) prior to storage.
- Check mounting bolts for wear and/or damaged threads and replace before remounting.

## TORQUE CHART

SIZE	 GRADE 2	 GRADE 5	 GRADE 8
1/4-20	50 IN-LBS	75 IN-LBS	9 FT-LBS
3/8-16	15 FT-LBS	23 FT-LBS	35 FT-LBS
1/2-13	35 FT-LBS	55 FT-LBS	80 FT-LBS
5/8-11	75 FT-LBS	110 FT-LBS	170 FT-LBS
3/4-10	130 FT-LBS	200 FT-LBS	280 FT-LBS
1-8	190 FT-LBS	480 FT-LBS	680 FT-LBS
1 1/4-7	380 FT-LBS	840 FT-LBS	1360 FT-LBS

# LUBE CHART AND BEARINGS

## LUBRICATION

All bearing units are factory prelubricated and, therefore, do not require supplemental grease before service life begins. Relubrication, when administered correctly, can increase the life of a bearing substantially. We recommend the following general guidelines to maximize your bearing life:

RPM	Temperature	Environmental Condition	Interval
100 500 1,000	32°F-120°F 32°F-150°F 32°F-210°F	Clean Clean Clean	6-12 months 2-6 months 2 wks to 2 months
1,500 Any	Over 210°F 32°F-150°F	Clean Dirty	Daily to weekly Weekly to monthly
Any Any	Over 150°F Any Temp.	Dirty Very Dirty	Daily to 2 wks Daily to weekly
Any	Any Temp.	Extremely Dirty	Daily to weekly

**BEARING, 1.5" 4-BOLT FLANGE**  
PN: 05030007

**BEARING, 1.5" TAKE-UP,  
ECCENTRIC LOCK COLLAR**  
PN: 05030036

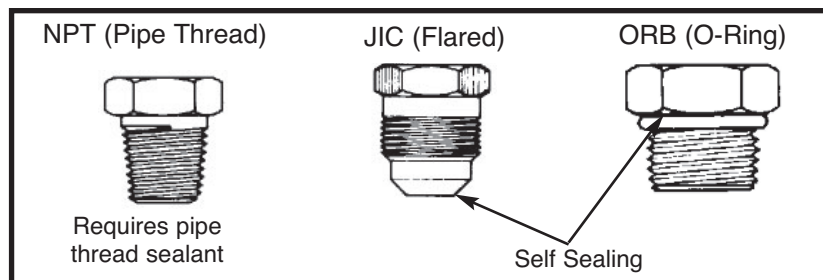
**BEARING, 1" 4-BOLT W/  
ECCENTRIC LOCK COLLAR**  
PN: 05030035

### NOTE:

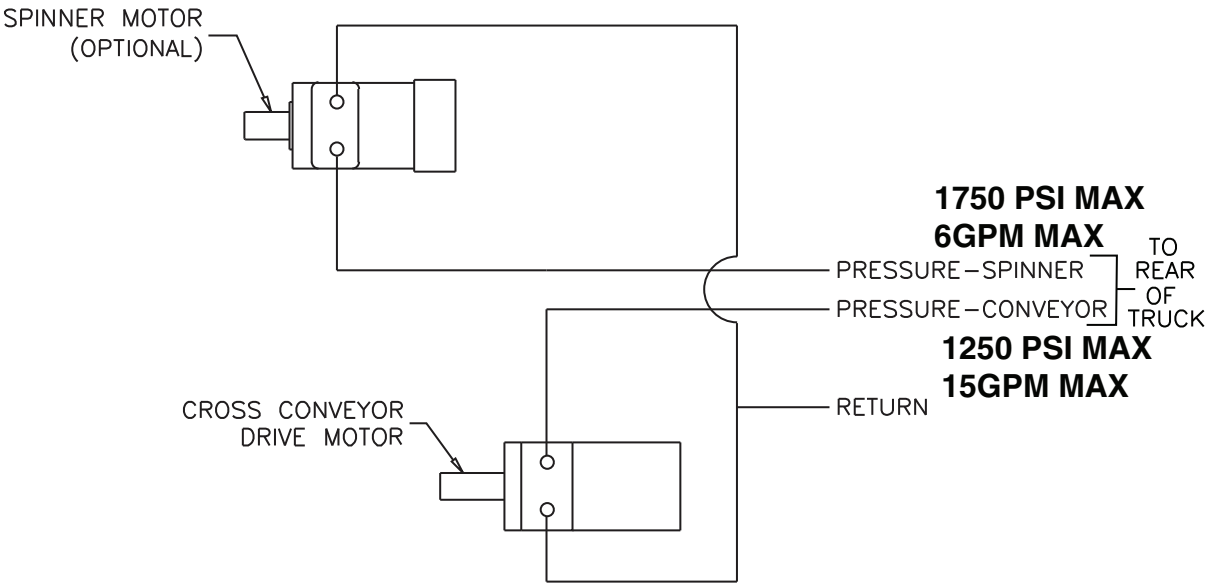
Over lubrication is a major cause of bearing failures. Please relubricate conservatively when bearing requirements.

When selecting a bearing lubricant, your dealer suggest any lithium-based NLGI #2 grease. For operating temperatures higher than 210°F, please consult your dealer.

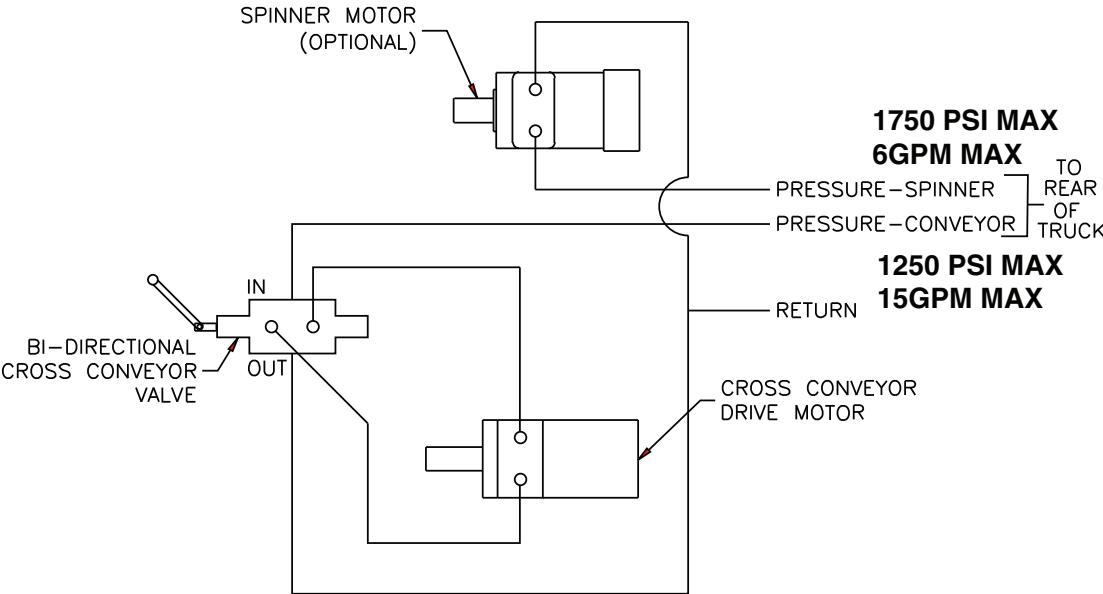
## HYDRAULIC FITTING



# HYDRAULIC SCHEMATICS



PLUMBING SCHEMATIC FOR STANDARD REAR CROSS CONVEYOR



PLUMBING SCHEMATIC FOR BI-DIRECTIONAL CONTROL VALVE FOR CROSS CONVEYOR

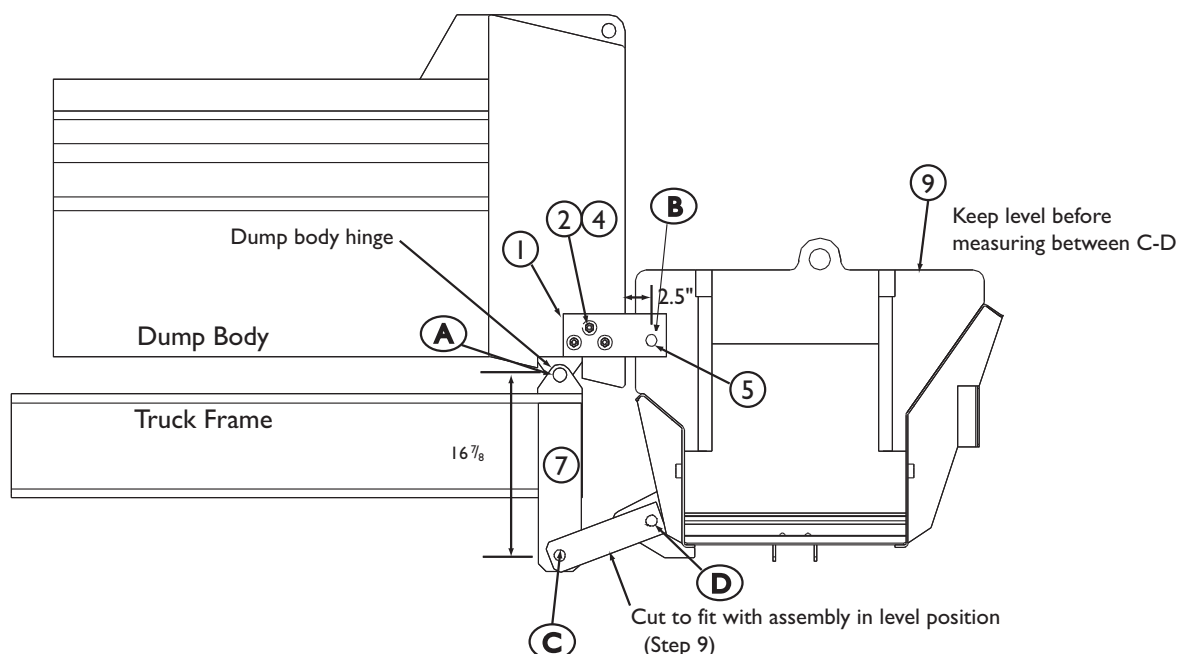
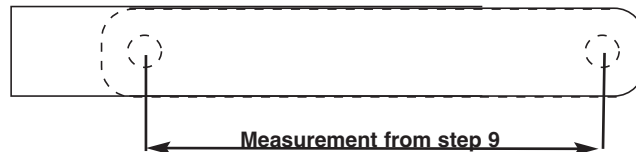
# HYDRAULIC TROUBLE SHOOTING CHART

<p><b>CONDITION 1</b> Pump cavitation recognized by excessive noise.</p> <p><b>CAUSE</b></p> <ul style="list-style-type: none"> <li>• Air entering system through suction lines.</li> <li>• Suction line kinked, twisted or too long.</li> <li>• Inadequate size suction line.</li> <li>• Oil too heavy.</li> <li>• Excessive pump speed. Normal pump speed 1200 to 1500 RPM.</li> </ul> <p><b>CORRECTION</b></p> <ul style="list-style-type: none"> <li>• Check line from reservoir for possible leaks.</li> <li>• Install suction line as short and straight as possible.</li> <li>• Increase suction line size.</li> <li>• Drain and replace with a low viscosity non-detergent oil.</li> <li>• Pump capacity is 16 GPM at 1000 RPM. Decrease PTO speed accordingly.</li> </ul>	<p><b>CONDITION 2</b> Erratic operation of conveyor and/or spinner.</p> <p><b>CAUSE</b></p> <ul style="list-style-type: none"> <li>• Low oil.</li> <li>• Worn or defective motor.</li> <li>• Dirty, worn or defective flow control valve.</li> <li>• Plugged filter.</li> <li>• Relief valve setting too low.</li> <li>• Pump cavitation.</li> <li>• Air vent on reservoir tank is blocked.</li> </ul> <p><b>CORRECTION</b></p> <ul style="list-style-type: none"> <li>• Fill reservoir to a <math>\frac{3}{4}</math> full level.</li> <li>• Repair or replace motor.*</li> <li>• Clean, repair or replace flow control.*</li> <li>• Replace filter element and clean filter.</li> <li>• Adjust relief valve for 1500 PSI.</li> <li>• Refer to pump section.</li> <li>• Clean or replace vent cap to admit atmospheric pressure to inside of the tank.</li> </ul>
<p><b>CONDITION 3</b> Slow operation of conveyor and/or spinner.</p> <p><b>CAUSE</b></p> <ul style="list-style-type: none"> <li>• Worn or defective pump.</li> <li>• Worn or defective motor.</li> <li>• Pump cavitation.</li> <li>• Insufficient pump speed.</li> </ul> <p><b>CORRECTION</b></p> <ul style="list-style-type: none"> <li>• Repair or replace pump.*</li> <li>• Repair or replace motor.*</li> <li>• Refer to pump section.</li> <li>• Pump capacity is 16 GPM at 1000 RPM. Increase PTO accordingly.</li> </ul>	<p><b>CONDITION 4</b> Conveyor and/or spinner will not operate.</p> <p><b>CAUSE</b></p> <ul style="list-style-type: none"> <li>• Quick disconnects are dirty, damaged, or improperly connected.</li> <li>• Hose connections wrong.</li> <li>• Foreign material in valve compensator.</li> </ul> <p><b>CORRECTION</b></p> <ul style="list-style-type: none"> <li>• Clean or replace and properly connect.</li> <li>• Refer to illustration.</li> <li>• Remove compensator and clean.</li> </ul>



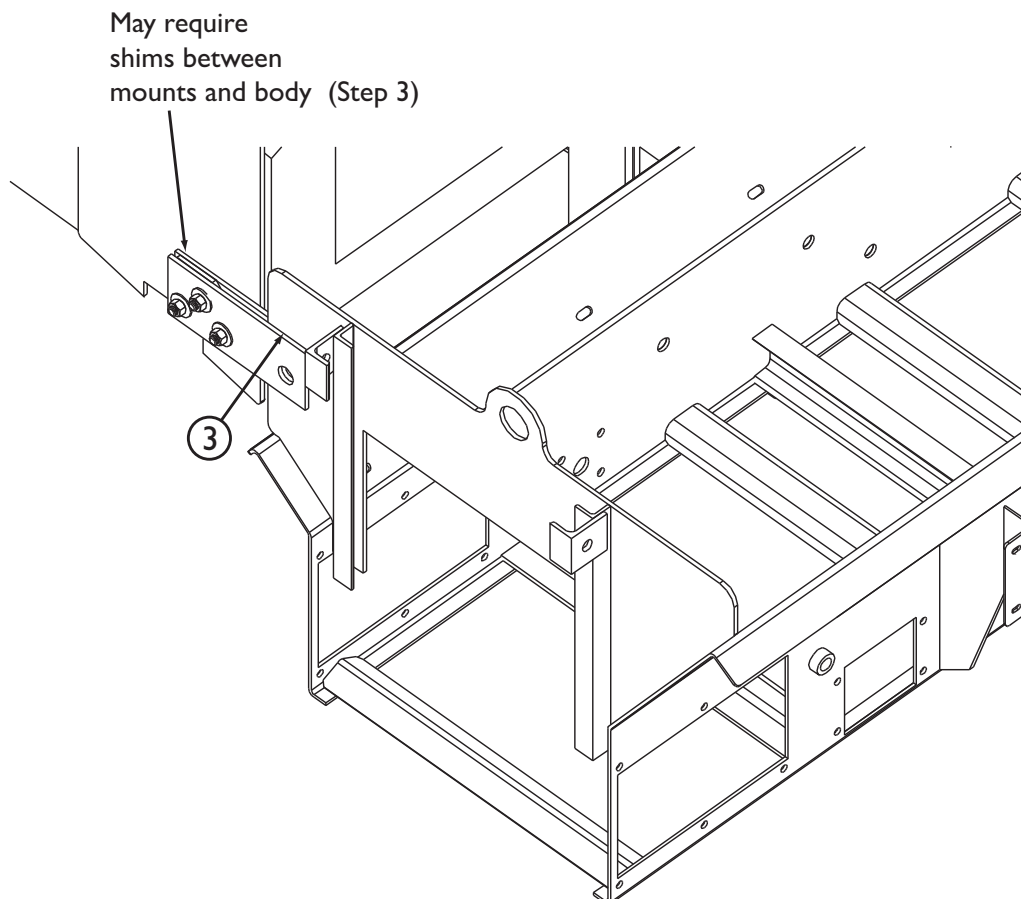
# INSTALLATION INSTRUCTIONS

1. Clamp the body mount brackets (2 per side) and spacers (1 between brackets) to the dump body using the measurements in the diagram. The bottom edge of the brackets should be even with the bottom edge of the dump body. The  $1\frac{1}{16}$ " diameter hole should extend past the rear of the body  $2\frac{1}{2}$ ".
2. Drill (3)  $\frac{1}{2}$ " diameter holes per side through the body using the brackets as a template.
3. Measure the distance between the end plates on the conveyor body. The end plates will each fit between the (2) mounting brackets on each side of the truck. The mounting brackets may require shimming to match the width of the conveyor body. Shim equally on both sides of the dump body (if needed).
4. Fasten the mounting brackets to the dump body (with shims if needed) Using  $\frac{1}{2}$ " bolts/nuts and washers. The length of the bolts may depend upon shimming. Tighten bolts to specifications.
5. Using a proper lifting device, hang the conveyor body on the mounting brackets (B) using the 1" x 2" pins provided. Secure with hairpin clips. Lift the rear of the assembly to a level position.
6. To find the location of the under body mounting bars ( $\frac{1}{2}$ " x 4" bars with a  $1\frac{1}{16}$ " hole in one end) use a plumb bob or similar device so the mounts can be located directly below the dump body hinge. (A) The center of the dump body hinge should measure about  $16\frac{7}{8}$ " to the center of the hole in the under body mounting bars. (C)
7. Attach the under body mounts to the truck frame. The mounts can be welded or bolted to the truck frame. The measurements between the dump body hinge, (A) the under body mounts and the mounting locations on the cross conveyor assembly are critical. Double-check the (A to C) measurements prior to attaching the bars.
8. Attach the lower mounting bars ( $\frac{1}{2}$ " x 3" bars with a  $1\frac{1}{16}$ " diameter hole in one end) to the lower mount location on the conveyor with the 1" pins provided.
9. With the conveyor assembly in a level position, measure center to center from the holes in the under body mounts (C) to the lower mounts on the conveyor assembly. (D) This measurement will be the length between holes in the lower mounting bars. Drill or punch a  $1\frac{1}{16}$ " diameter hole in each of the (4) bars and trim any excess length.



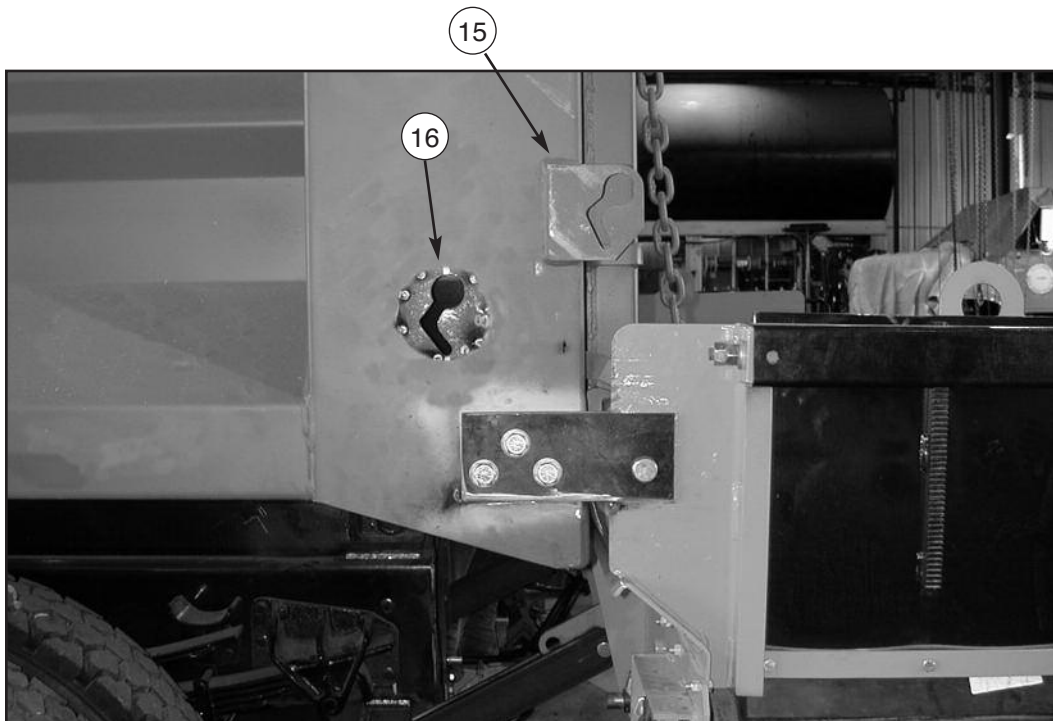
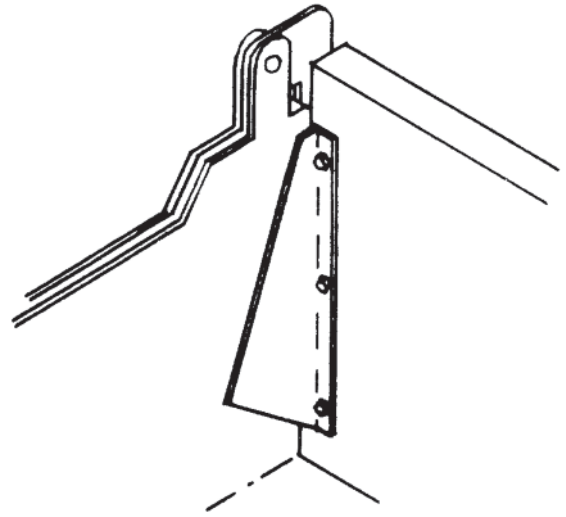
# INSTALLATION INSTRUCTIONS

10. Attach the (4) lower mounting bars to the lower mounts using the (2) 1" x 3" pins provided. Secure the pins with hairpin clips.
11. Plumb the system according to the diagram on page 5. Tie down hydraulic hoses where needed. Leave excess length in hoses to allow for movement of body.
12. Raise the dump body to check for any binding and to see if the assembly stays level.
13. To seal the gap between the dump body and the conveyor assembly, clamp the rubber belting retainer strip to the rear of the dump body. It should be centered on the body and approximately 1½" from the bottom edge of the tailgate to the center of the holes in the strip. Using the strip as a template, drill through the (10) holes into the dump body with a 7/16" diameter drill bit.
14. Remove the strip and attach the rubber belting along with the retainer strip to the dump body. Fasten the rubber belting and strip with (10) 3/8" x 1¼" bolts/nuts and washers.
15. The existing tailgate chain holders welded on the side of the dump body may need to be replaced, as the brackets may interfere with the operation of the unit. Replacement brackets are included. First, remove the existing brackets with a cutting torch and grind any welds flat.
16. Locate replacement brackets as shown (measurements are approximate). Cut a 4½" diameter hole and weld the chain holder to the inside of the hole. Clean surfaces of paint, grease or dirt prior to welding. Repaint as necessary.



# INSTALLATION INSTRUCTIONS

17. Tailgate shields: Bolt or weld the shields to the inside of the tailgate to prevent material spillage at the ends. As shown to the right.



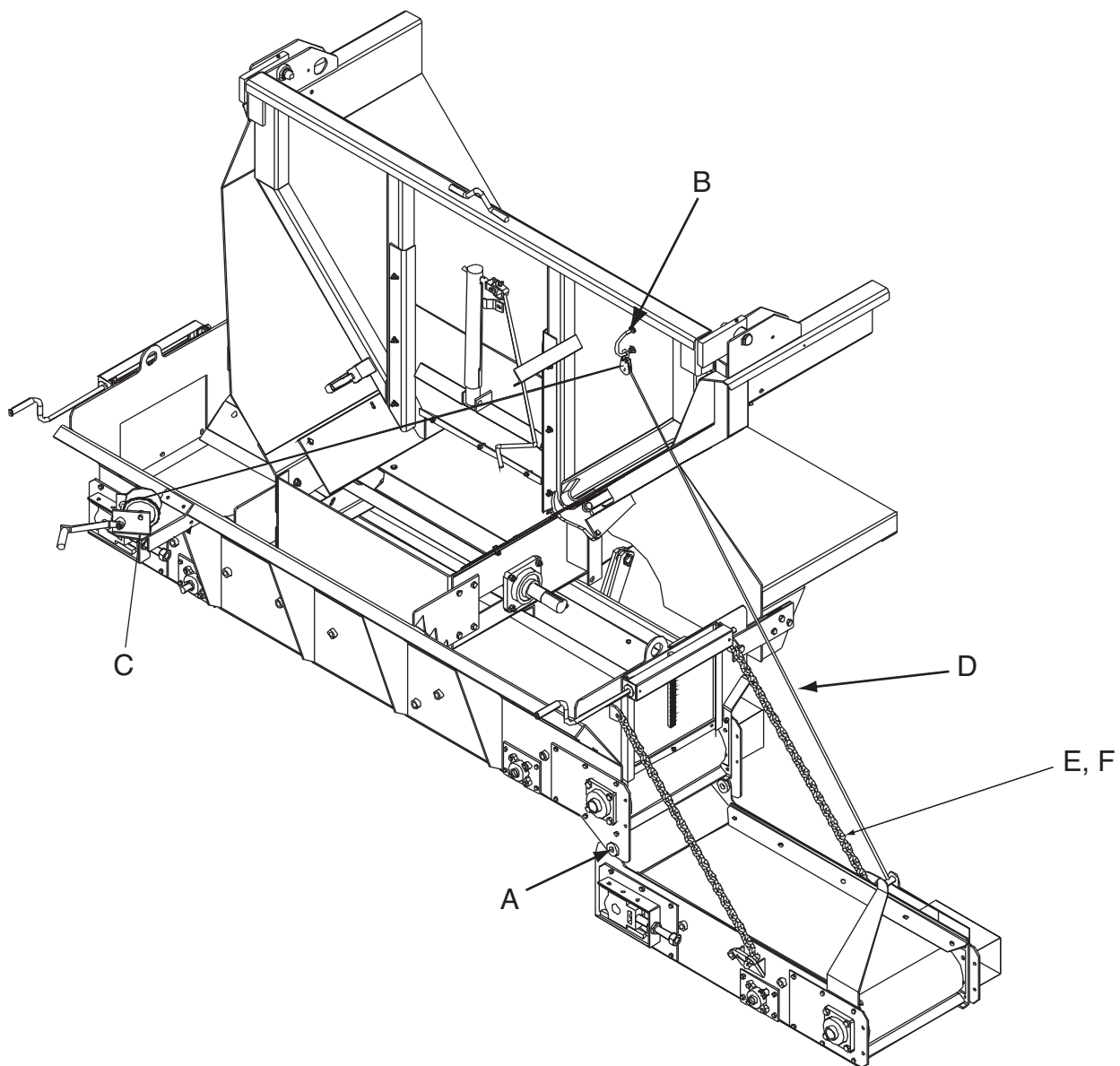
## REAR CROSS CONVEYOR EXTENSION

- A. Attach the extension to the motor/bearing plates with (2)  $\frac{3}{4}$ " bolts/lock nuts included. Do not over tighten these bolts as they will restrict the pivoting of the extension. The motor/bearing plates must be the same style as they appear in the drawing. If the plates must be replaced, see pages 29-30 for replacement part numbers.
- B. Drill (2)  $\frac{7}{16}$ " diameter holes through the tailgate to mount the pulley. Use the U-bolt to get the correct spacing of the holes. Insert the U-bolt and fasten in place with the washers and nuts provided.
- C. Place the winch mounting bracket on the cross conveyor. The bracket attaches to the top edge of the assembly and to the first rib on the left side as shown in the diagram. Clamp in place and mark out hole locations and drill or transfer the holes through the bracket with a  $\frac{7}{16}$ " drill bit. Fasten bracket and winch in place with (6)  $\frac{3}{8}$ " x 1" bolts and lock nuts.
- D. Hook the lift cable to the lift bracket on the extension with the snap hook end of the cable. Route the cable through the pulley on the tailgate and to the winch. Attach the cable to the winch according to the mounting instructions included with the winch.
- E. Attach the support chain mounting angles to the right side end plate according to the diagram.
- F. Attach the support chains to the mounting angles with  $\frac{1}{2}$ " x  $1\frac{1}{2}$ " bolts,  $\frac{1}{2}$ " washers and  $\frac{1}{2}$ " lock nuts. Attach the other end of the support chains to the keyhole plates located near the center of the extension.
- G. Plumb the system.

### OPERATING INSTRUCTIONS

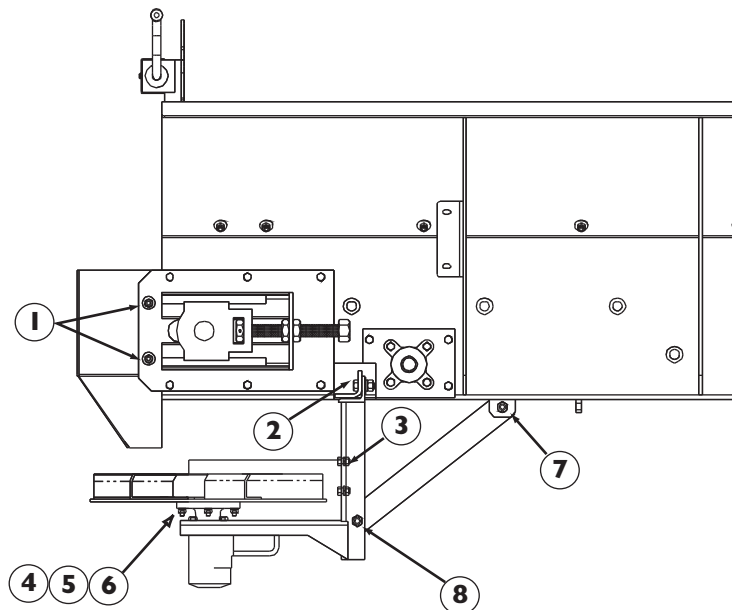
- A. As the height of the extension is adjusted the support chains should also be adjusted to carry the weight. Do not let the winch and the lift cable carry the weight.
- B. Always keep the extension in the stored/raised position when traveling or when not in use.
- C. Lubricate the bearings according to the diagram on Page 4.

## REAR CROSS CONVEYOR EXTENSION



# CROSS CONVEYOR SPINNER INSTALLATION

1. Attach the chute weldment to the mounting plates on the conveyor assembly using (4)  $\frac{3}{8}$ " x 1" bolts,  $\frac{3}{8}$ " lock nuts and (8)  $\frac{3}{8}$ " flat washers.
2. Attach the spinner frame weldment to the underside of the cross conveyor assembly as shown in diagram using (2)  $\frac{1}{2}$ " x  $1\frac{1}{4}$ " bolts,  $\frac{1}{2}$ " hex nuts,  $\frac{1}{2}$ " flat and lock washers.  
**Note:** This is a cutaway view. The frame weldment is installed under the center of the conveyor assembly.
3. Attach the spinner shield to the spinner frame using (2)  $\frac{3}{8}$ " x  $\frac{7}{8}$ " bolts, hex nuts and lock washers.
4. Attach the hydraulic motor to the spinner frame using (4)  $\frac{3}{8}$ " x  $\frac{7}{8}$ " bolts and lock washers.
5. Attach the hub to the spinner disk using (4)  $\frac{5}{16}$ " x  $1\frac{1}{2}$ " bolts, hex nuts, flat and lock washers.
6. Attach the spinner/hub assembly to the spinner motor using (1)  $\frac{1}{4}$ " x  $1\frac{1}{2}$ " bolt, flat and lock washers. Tighten the hub to the motor shaft with a  $\frac{1}{4}$ " x  $\frac{3}{8}$ " set screw.
7. Attach the hanger bar to the under side of the conveyor assembly with a  $\frac{1}{2}$ " x  $1\frac{1}{4}$ " bolt and lock nut. Hold the spinner assembly square/level to the conveyor assembly and clamp the hanger bar to it.
8. Drill through the hanger bar into the spinner frame using  $\frac{9}{16}$ " drill bit. Fasten with a  $\frac{1}{2}$ " x  $1\frac{1}{4}$ " bolt and lock nut.



# OPERATING INSTRUCTIONS

**CAUTION:** Make certain everyone is clear of machine before starting engine or operation.

## **INITIAL TEST RUN:**

1. The unit should be run without material to check operation.
2. Fill hydraulic tank to within about 2" of the top.
3. Put the "On-Off" lever on the control valve to the "Off" position.
4. Start the engine, engage the P.T.O. or turn on the hydraulic system and allow the oil to circulate through the system.
5. Move the lever to the "On" position. If the engine lugs down, shut the valve "Off" IMMEDIATELY. This indicates the system is not properly plumbed, which must be corrected.
6. Check the spinner and conveyor to make sure they are turning in the right direction.
7. Check the system for leaks. Tighten joints as required.
8. Refill reservoir. Do not fill reservoir closer than 2" from top.

## **NORMAL OPERATION:**

1. Open the dump body tailgate latch and adjust stop chains so that the tailgate stops just short of the spreader rear plate.
2. Adjust the spinner if necessary.
3. Engage P.T.O. Turn on the hydraulic system.
4. Raise the dump body until material slides back.
5. Set the control valve knobs to desired settings.
6. Engage the spreader by moving the control valve lever to the "On" position.

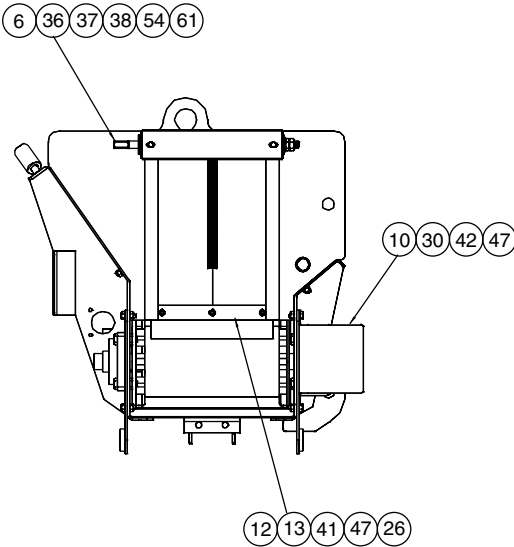
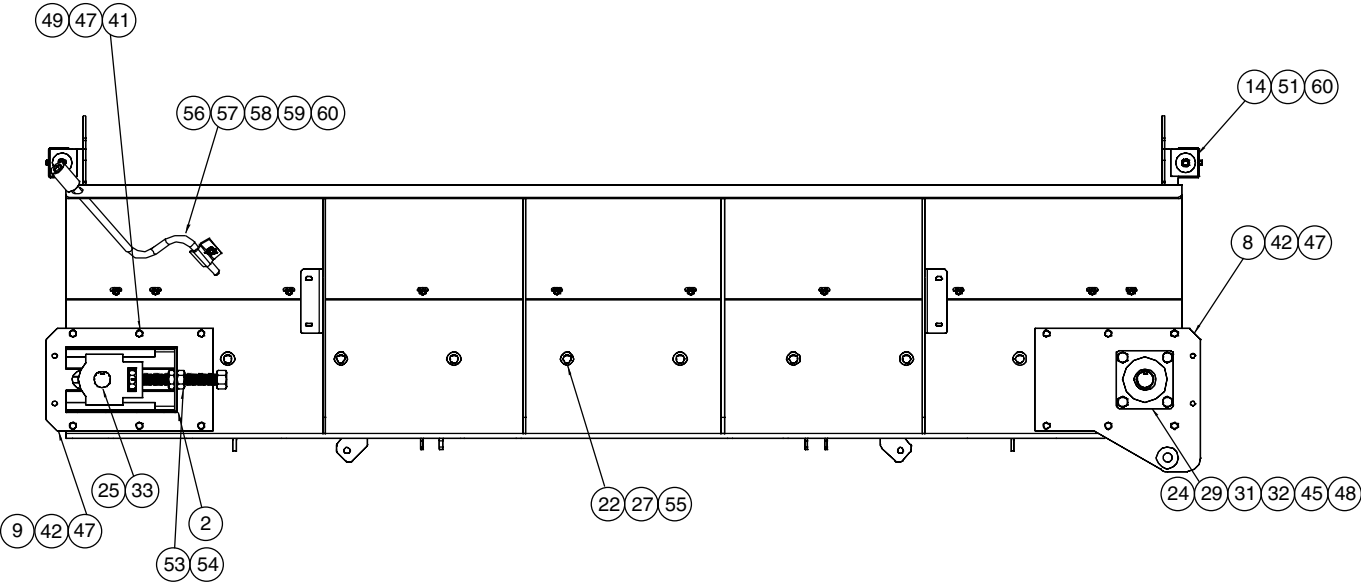
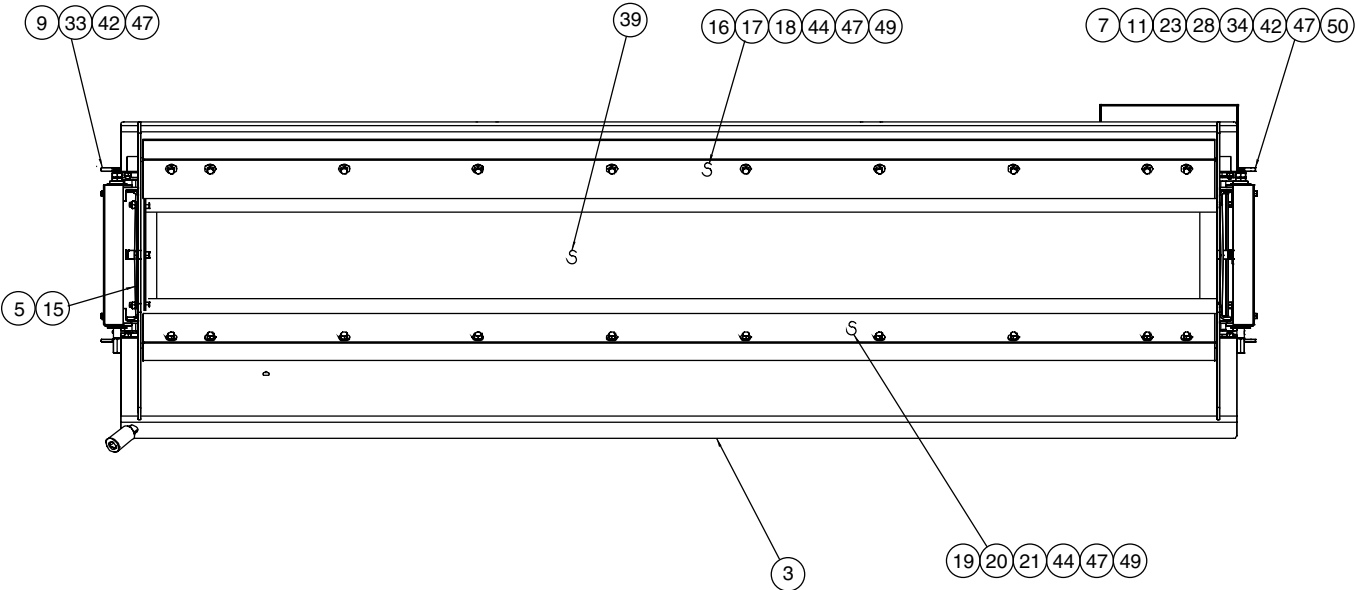
## GENERAL INFORMATION

- All references to right or left pertain to the spreader as viewed from the rear of the truck, looking in the direction of travel.
- Delivery of replacement parts is subject to our sales delivery terms.
- Use only **Monroe Truck Equipment** O.E.M. replacement parts. Failure to do so will void warranty.
- Replacement parts in this manual reflect our most common spreader items. If you do not find the part you require, please call your distributor.
- **Monroe Truck Equipment** reserves the right to make revisions or alterations to this parts manual.



## NOTES

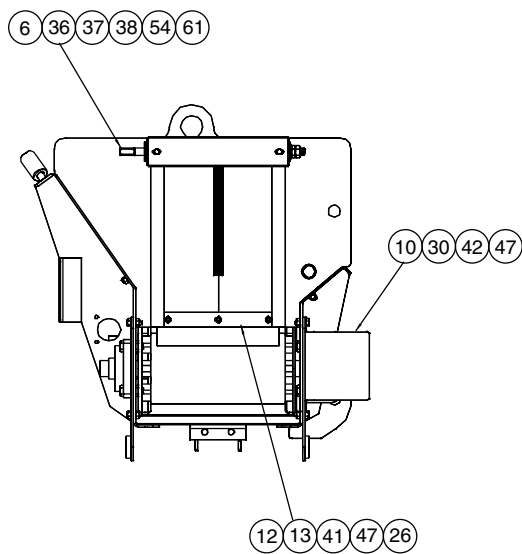
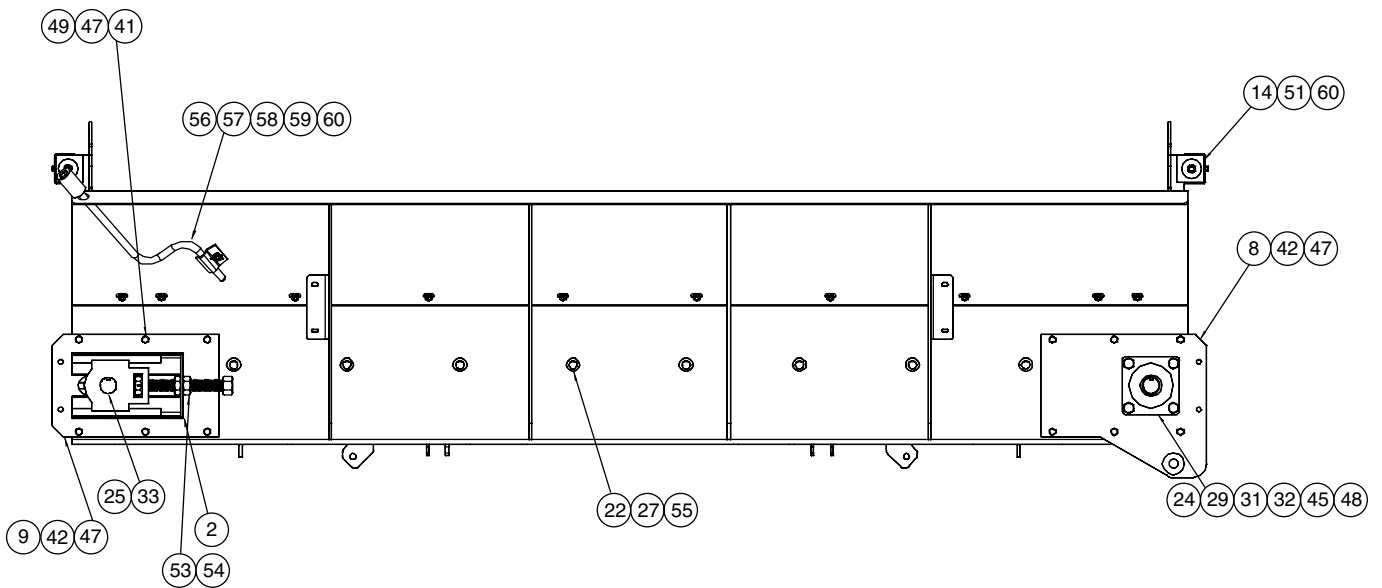
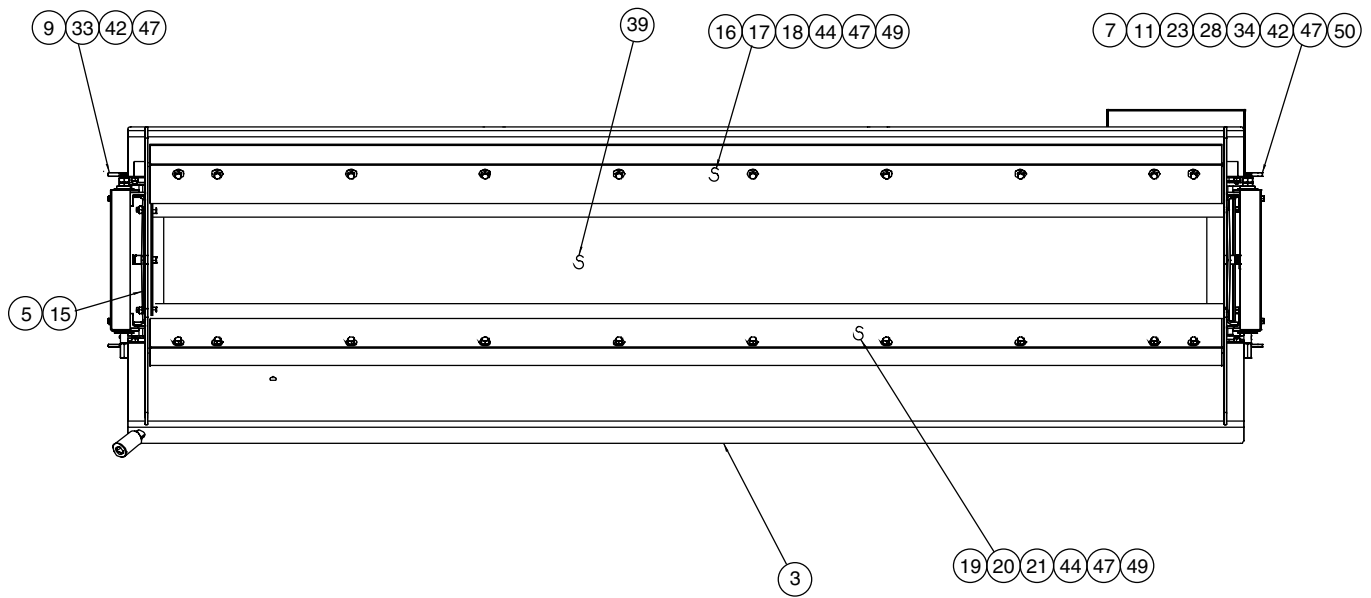
12" REAR CROSS CONVEYOR UNIT, MILD STEEL



# 00016899-A SPREADER, CC, MS10312, 12.0 REAR BELT CROSS CONVEYOR

Item	Qty	PN	Description	Item	Qty	PN	Description
1	1	00057837-A	MOUNTING KIT, CC, MS	32	2	05030007	BEARING, 1.5" ID, 4-BOLT FLANGE
2	2	00057834-A	ADJUSTER BRG WELDMENT, MS	33	2	05030036	BEARING, 1.50" TAKE UP ECCENTRIC
3	1	00035797-A	BODY WELDMENT, CC, MS	34	1	05050121	KEY, .25 X .25 X 1.5
5	2	00078963-A	DOOR WELDMENT, CC, MS, LH	36	4	05021420	WASHER, 1.25 OD, FLAT, NYLON
6	2	00094561	CRANK WELDMENT, 304 SST	37	2	05021311	WASHER, .625, FLAT, ZINC
7	1	00069656-A	MOUNTING PLATE WELDMENT, DRIVE PULLEY, CROSS CONVEYOR, MS	38	4	05020122	NUT, .625-11, G2, JAM, ZINC
8	1	00069642-A	MOUNTING PLATE WELDMENT, DR PULLEY, RR, MS	39	1	05051918	BELTING, HI-TEMP, 12" WIDE X 203" LG
9	2	00034094-A	MOUNTING PLATE WELDMENT, IDLER, MS	40	1	05050095	TAG, SERIAL NUMBER, 1.25" X 3.5" SS
10	1	00057815-A	COVER WELDMENT, CHAIN, MS	41	3	05010644	BOLT, .375-16 X 1.25, G8, HHCS, ZINC
11	1	00057853-A	SPACER PLATE, MS	42	28	05010643	BOLT, .375-16 X 1, G8, HHCS, ZINC
12	1	00057807	WIPER GATE DOOR	44	23	05013988	BOLT, .375-16 X 1.5, G5, CARRIAGE, ZINC
13	2	00057809-A	STRIP, DOOR, MS	45	8	05010692	BOLT, .5-13 X 1.750, G8, HHCS, ZINC
14	2	00057816-A	COVER, CRANK, MS	47	50	05020898	NUT, .375-16, GC, TOP LOCK, C&W
15	1	00078909-A	WIPER BRACE, MS	48	8	05020847	NUT, .5-13, GC, TOP LOCK, C&W
16	1	00035711-A	HOLDER, DFTR, MS	49	24	05021307	WASHER, .375, FLAT, ZINC
17	1	00085088-A	WEAR PLATE, MS	50	4	05021365	WASHER, .375, LOCK, ZINC
18	1	00035713	RUBBER DEFLECTOR, FRONT	51	4	05010591	BOLT, .250-20, .750, G8, HHCS, ZINC
19	1	00035712-A	HOLDER DFTR, BACK, MS	52	1	05050775	CARDBOARD BOX
20	1	00085089-A	WEAR PLATE, REAR, MS	53	4	05020125	NUT, 1-8, G2, JAM, ZINC
21	1	00035714	RUBBER DEFLECTOR, BACK	54	4	05022182	PIN, .188 X 1.50" OAL, ROLL
22	8	00057830	SHAFT, ROLLER, CC	55	16	05021302	WASHER, .75, FLAT, SST
23	1	05006745	MOTOR, HYD, WHITE, 22.6 CUI <i>See page 42-43</i>	56	1	00078025	CRANK HANDLE WELDMENT, DOOR, MS
24	1	00078959	DRIVE ROLLER WELDMENT	57	1	00103682-A	CLAMP, CRANK HANDLE, CC, 304 SS
25	1	00078960	ADJ ROLLER WELDMENT	58	1	05017058	BOLT, .250-20 X 1, CGR, SS
26	1	00081652	WIPER, DOOR, CC, CHAMFERED	59	1	05021083	NUT, .250-20 WING, 1.063 SPAN SS
27	16	05051916	ROLLER, UHMW, 2.5 DIA X 7.25 LG	60	5	05021363	WASHER, .250, LOCK, SS
28	1	05033048	SPROCKET, 60B12FX1.0-.25" KW	61	2	00082658	PINION GEAR, CC, .188 HOLE, CRANK
29	1	05033047	SPROCKET, 60B16FX1.50-.375" KW	62	1	00109593	DECAL KIT, CROSS CONVEYOR, 103 SERIES <i>See page 26-27</i>
30	1	05036062	CHAIN ASSEMBLY, W/ CONNECTOR				
31	1	05050052	KEY MACHINERY, .375" X 2.50"				

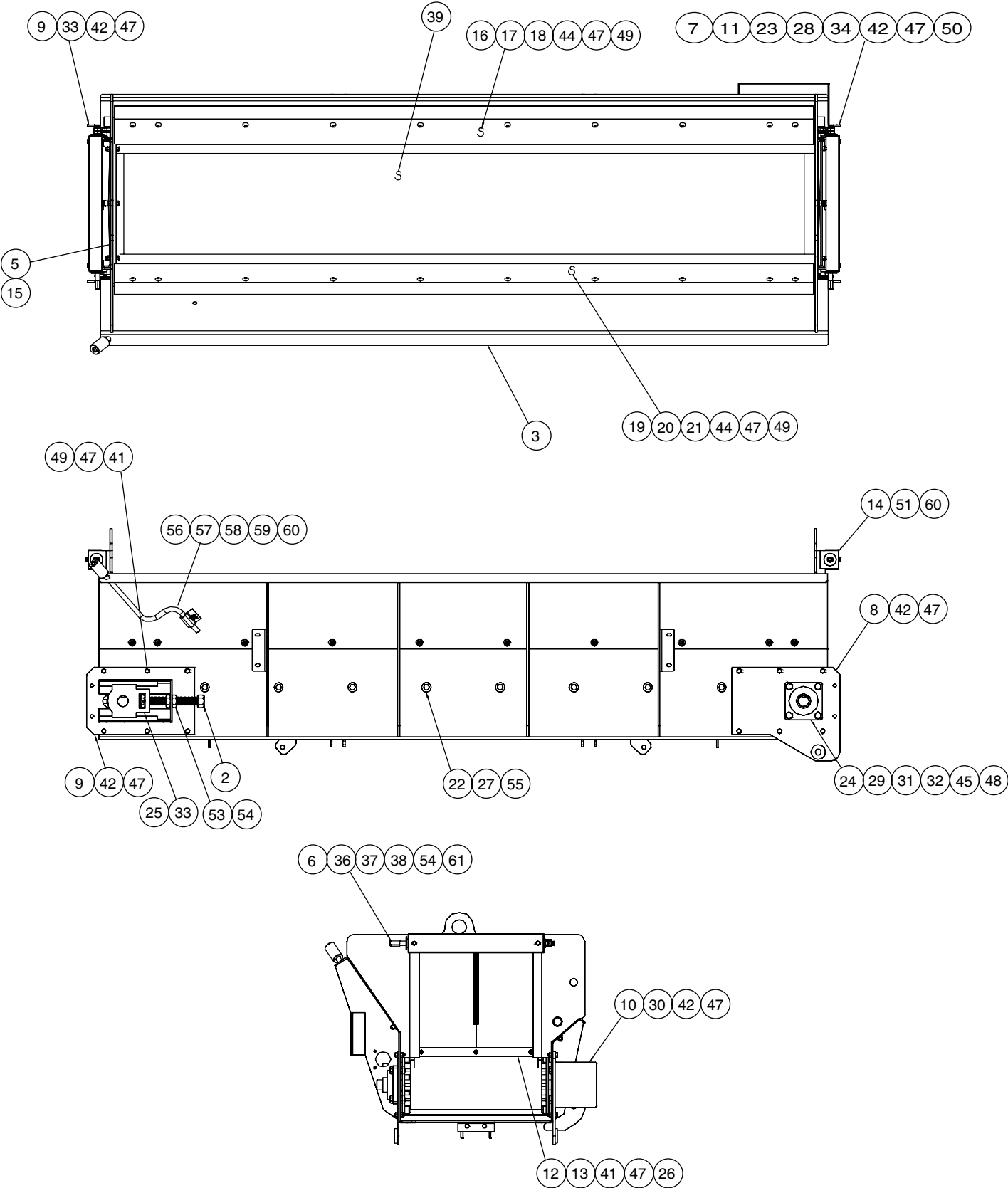
## 12" REAR CROSS CONVEYOR UNIT, STAINLESS STEEL



# 00016899-B SPREADER, CC, MS10312, 12.0 REAR BELT CROSS CONVEYOR

Item	Qty	PN	Description	Item	Qty	PN	Description
1	1	00057837-B	MOUNTING KIT, CC, SST	32	2	05030007	BEARING, 1.5" ID, 4-BOLT FLANGE
2	2	00057834-B	ADJUSTER BRG WELDMENT, SST	33	2	05030036	BEARING, 1.50" TAKE UP ECCENTRC
3	1	00035797-B	BODY WELDMENT, CC, SST	34	1	05050121	KEY, .25 X .25 X 1.5
5	2	00078963-B	DOOR WELDMENT, CC, MS, LH	36	4	05021420	WASHER, 1.25 OD, FLAT, NYLON
6	2	00094561	CRANK WELDMENT, 304 SST	37	2	05021311	WASHER, .625, FLAT, ZINC
7	1	00069656-B	MOUNTING PLATE WELDMENT, DRIVE PULLEY, CROSS CONVEYOR, SST	38	4	05020803	NUT, .625-11, JAM, SST
8	1	00069642-B	MOUNTING PLATE WELDMENT, DR PULLEY, RR, SST	39	1	05051918	BELTING, HI-TEMP, 12" WIDE X 203" LG
9	2	00034094-B	MOUNTING PLATE WELDMENT, IDLER, SST	40	1	05050095	TAG, SERIAL NUMBER, 1.25" X 3.5" SS
10	1	00057815-B	COVER WELDMENT, CHAIN, SST	41	3	05016049	BOLT, .375-16 X 1.25, HHCS, SST
11	1	00057853-B	SPACER PLATE, SST	42	28	05016034	BOLT, .375-16 X 1, HHCS, SST
12	1	00057807	WIPER GATE DOOR	44	23	05016747	BOLT, .375-16 X 1.5, G5, CARRIAGE, SST
13	2	00057809-B	STRIP, DOOR, SST	45	8	05016204	BOLT, .5-13 X 1.750, HHCS, SST
14	2	00057816-B	COVER, CRANK, SST	47	50	05020891	NUT, .375-16, NYLON LOCK, SST
15	1	00078909-B	WIPER BRACE, SST	48	8	05020908	NUT, .5-13, NYLON LOCK, SST
16	1	00035711-B	HOLDER, DFTR, SST	49	24	05021390	WASHER, .375, FLAT, SST
17	1	00085088-B	WEAR PLATE, SST	50	4	05021392	WASHER, .375, LOCK, SST
18	1	00035713	RUBBER DEFLECTOR, FRONT	51	4	05016113	BOLT, .250-20, .750, HHCS, SST
19	1	00035712-B	HOLDER DFTR, BACK, SST	52	1	05050775	CARDBOARD BOX
20	1	00085089-B	WEAR PLATE, REAR, SST	53	4	05020982	NUT, 1-8, G2, JAM, HEX, 18-8 SST
21	1	00035714	RUBBER DEFLECTOR, BACK	54	4	05022182	PIN, .188 X 1.50" OAL, ROLL
22	8	00057830	SHAFT, ROLLER, CC	55	16	05021302	WASHER, .75, FLAT, SST
23	1	05006745	MOTOR, HYD, WHITE, 22.6 CUI <i>See page 42-43</i>	56	1	00078025	CRANK HANDLE WELDMENT, DOOR, MS
24	1	00078959	DRIVE ROLLER WELDMENT	57	1	00103682-B	CLAMP, CRANK HANDLE, CC, 304 SS
25	1	00078960	ADJ ROLLER WELDMENT	58	1	05016986	BOLT, .250-20 X 1, CGR, SS
26	1	00081652	WIPER, DOOR, CC, CHAMFERED	59	1	05021084	NUT, .250-20 WING, 1.063 SPAN SS
27	16	05051916	ROLLER, UHMW, 2.5 DIA X 7.25 LG	60	5	05021393	WASHER, .250, LOCK, SS
28	1	05033048	SPROCKET, 60B12FX1.0-.25" KW	61	2	00082658	PINION GEAR, CC, .188 HOLE, CRANK
29	1	05033047	SPROCKET, 60B16FX1.50-.375" KW	62	1	00109593	DECAL KIT, CROSS CONVEYOR, 103 SERIES <i>See page 26-27</i>
30	1	05036062	CHAIN ASSEMBLY, W/ CONNECTOR				
31	1	05050052	KEY MACHINERY, .375" X 2.50"				

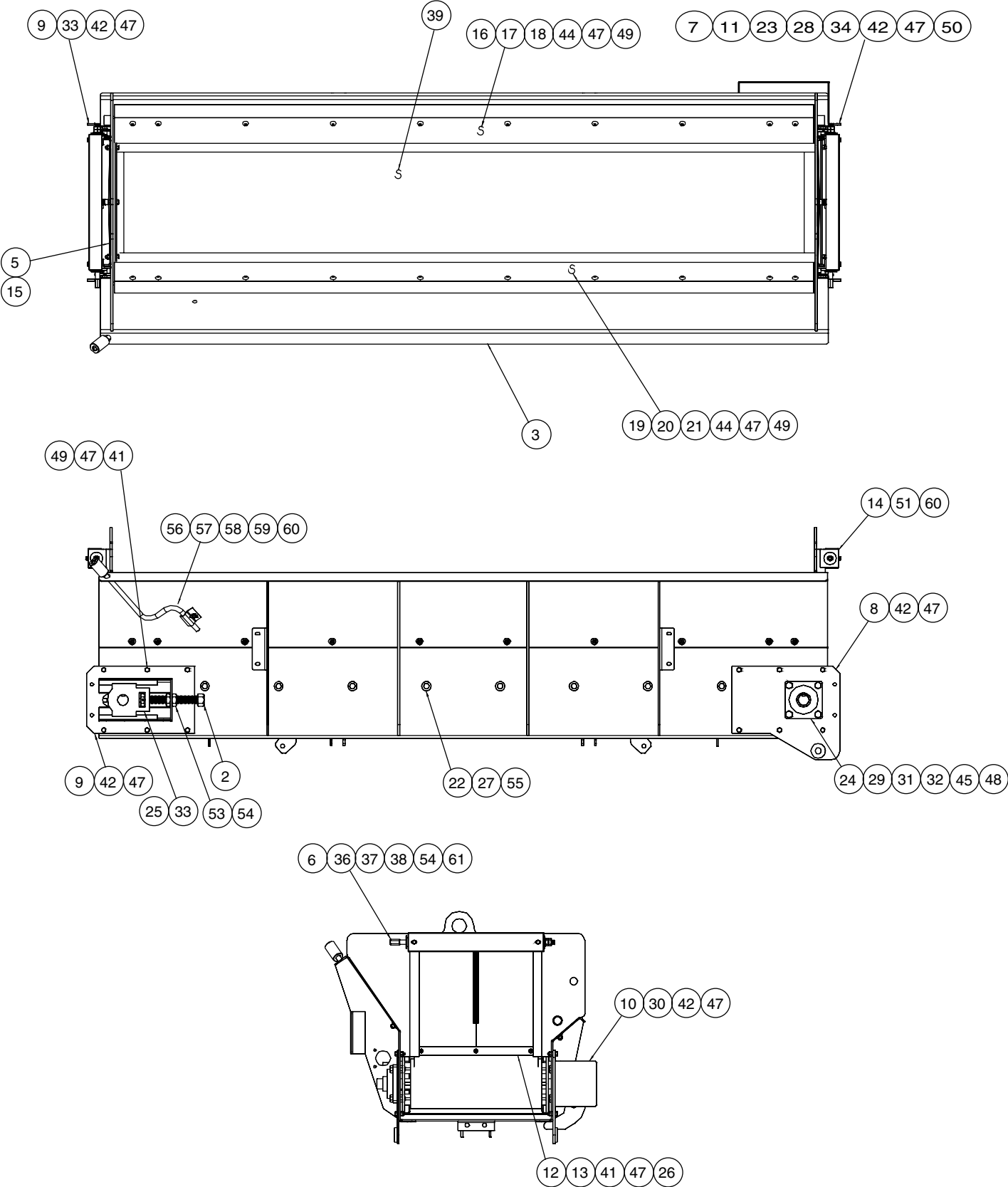
18" REAR CROSS CONVEYOR UNIT, MILD STEEL



# 00016898-A SPREADER, CC, MS10318, 18.0 REAR BELT CROSS CONVEYOR

Item	Qty	PN	Description	Item	Qty	PN	Description
1	1	00057837-A	MOUNTING KIT, CC, MS	32	2	05030007	BEARING, 1.5" ID, 4-BOLT FLANGE
2	2	00057834-A	ADJUSTER BRG WELDMENT, MS	33	2	05030036	BEARING, 1.50" TAKE UP ECCENTRC
3	1	00034086-A	BODY WELDMENT, CC, MS	34	1	05050121	KEY, .25 X .25 X 1.5
5	2	00078958-A	DOOR WELDMENT, CC, MS, LH	36	4	05021420	WASHER, 1.25 OD, FLAT, NYLON
6	2	00078024	CRANK WELDMENT, 304 SST	37	2	05021311	WASHER, .625, FLAT, ZINC
7	1	00069656-A	MOUNTING PLATE WELDMENT, DRIVE PULLEY, CROSS CONVEYOR, MS	38	4	05020122	NUT, .625-11, G2, JAM, ZINC
8	1	00069642-A	MOUNTING PLATE WELDMENT, DR PULLEY, RR, MS	39	1	05051917	BELTING, HI-TEMP, 18" WIDE X 203" LG
9	2	00034094-A	MOUNTING PLATE WELDMENT, IDLER, MS	40	1	05050095	TAG, SERIAL NUMBER, 1.25" X 3.5" SS
10	1	00057815-A	COVER WELDMENT, CHAIN, MS	41	3	05010644	BOLT, .375-16 X 1.25, G8, HHCS, ZINC
11	1	00057853-A	SPACER PLATE, MS	42	28	05010643	BOLT, .375-16 X 1, G8, HHCS, ZINC
12	1	00057808	WIPER GATE DOOR	44	23	05013988	BOLT, .375-16 X 1.5, G5, CARRIAGE, ZINC
13	2	00057810-A	STRIP, DOOR, MS	45	8	05010692	BOLT, .5-13 X 1.750, G8, HHCS, ZINC
14	2	00034078-A	COVER, CRANK, MS	47	50	05020898	NUT, .375-16, GC, TOP LOCK, C&W
15	1	00078908-A	WIPER BRACE, MS	48	8	05020847	NUT, .5-13, GC, TOP LOCK, C&W
16	1	00035711-A	HOLDER, DFTR, MS	49	24	05021307	WASHER, .375, FLAT, ZINC
17	1	00085088-A	WEAR PLATE, MS	50	4	05021365	WASHER, .375, LOCK, ZINC
18	1	00035713	RUBBER DEFLECTOR, FRONT	51	4	05010591	BOLT, .250-20, .750, G8, HHCS, ZINC
19	1	00035712-A	HOLDER DFTR, BACK, MS	52	1	05050775	CARDBOARD BOX
20	1	00085089-A	WEAR PLATE, REAR, MS	53	4	05020125	NUT, 1-8, G2, JAM, ZINC
21	1	00035714	RUBBER DEFLECTOR, BACK	54	4	05022182	PIN, .188 X 1.50" OAL, ROLL
22	8	00057831	SHAFT, ROLLER, CC	55	16	05021302	WASHER, .75, FLAT, SST
23	1	05006745	MOTOR, HYD, WHITE, 22.6 CUI <i>See page 42-43</i>	56	1	00078025	CRANK HANDLE WELDMENT, DOOR, MS
24	1	00078954	DRIVE ROLLER WELDMENT	57	1	00103682-A	CLAMP, CRANK HANDLE, CC, 304 SS
25	1	00078955	ADJ ROLLER WELDMENT	58	1	05017058	BOLT, .250-20 X 1, CGR, SS
26	1	00081651	WIPER, DOOR, CC, CHAMFERED	59	1	05021083	NUT, .250-20 WING, 1.063 SPAN SS
27	16	05051915	ROLLER, UHMW, 2.5 DIA X 7.25 LG	60	5	05021363	WASHER, .250, LOCK, SS
28	1	05033048	SPROCKET, 60B12FX1.0-.25" KW	61	2	00082658	PINION GEAR, CC, .188 HOLE, CRANK
29	1	05033047	SPROCKET, 60B16FX1.50-.375" KW	62	1	00109593	DECAL KIT, CROSS CONVEYOR, 103 SERIES <i>See page 26-27</i>
30	1	05036062	CHAIN ASSEMBLY, W/ CONNECTOR				
31	1	05050052	KEY MACHINERY, .375" X 2.50"				

18" REAR CROSS CONVEYOR UNIT, 304 STAINLESS STEEL

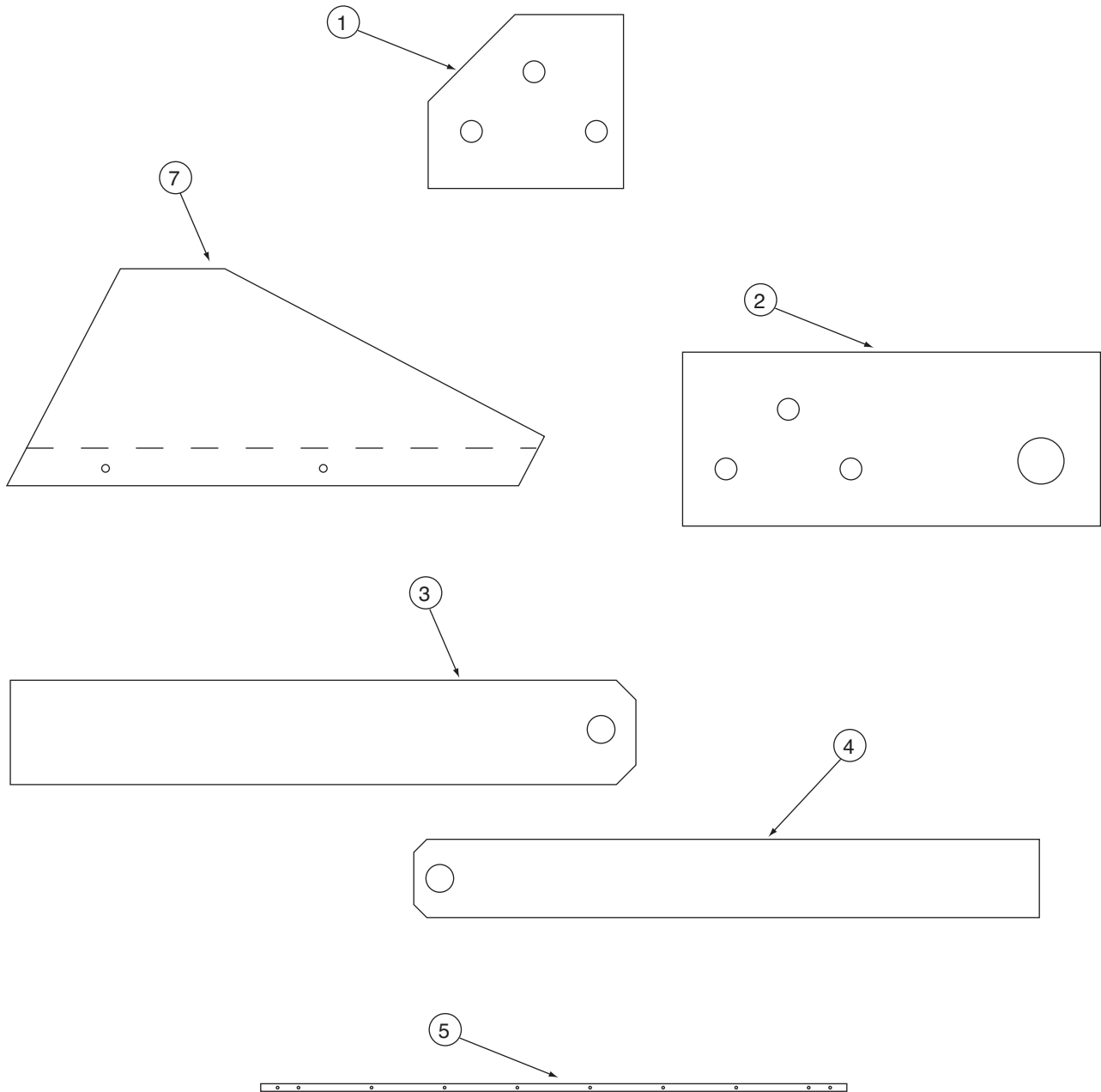




# 00016898-B SPREADER, CC, MS10318, 18.0 REAR BELT CROSS CONVEYOR

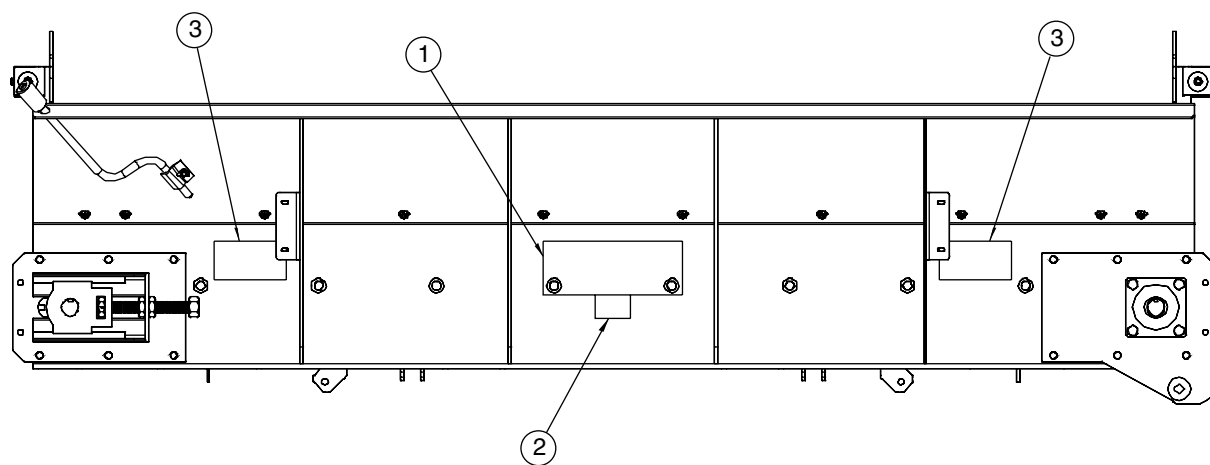
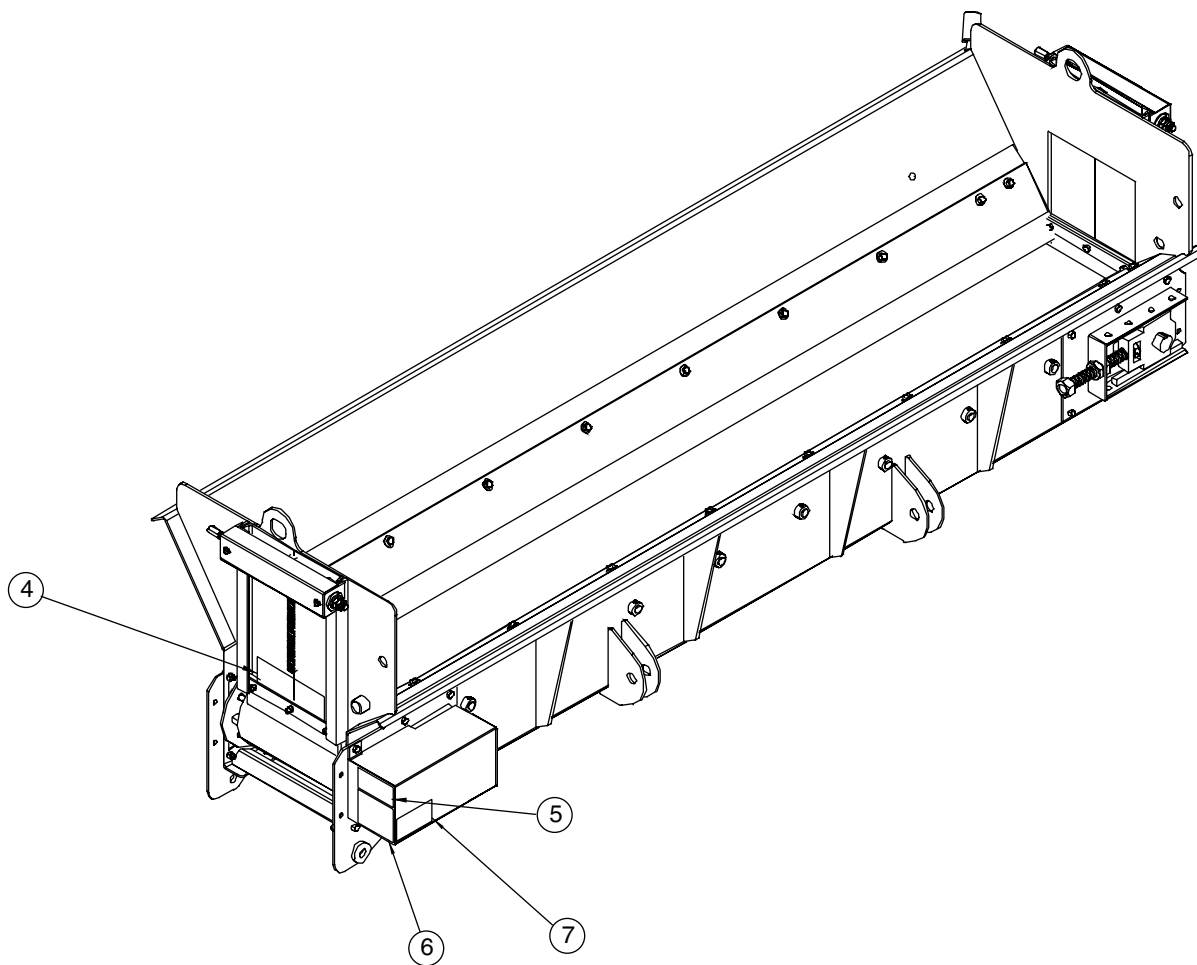
Item	Qty	PN	Description	Item	Qty	PN	Description
1	1	00057837-B	MOUNTING KIT, CC, SST	32	2	05030007	BEARING, 1.5" ID, 4-BOLT FLANGE
2	2	00057834-B	ADJUSTER BRG WELDMENT, SS	33	2	05030036	BEARING, 1.50" TAKE UP ECCENTRIC
3	1	00034086-B	BODY WELDMENT, CC, SST	34	1	05050121	KEY, .25 X .25 X 1.5
5	2	00078958-B	DOOR WELDMENT, CC, SST, LH	36	4	05021420	WASHER, 1.25 OD, FLAT, NYLON
6	2	00078024	CRANK WELDMENT, 304 SST	37	2	05021311	WASHER, .625, FLAT, ZINC
7	1	00069656-B	MOUNTING PLATE WELDMENT, DRIVE PULLEY, CROSS CONVEYOR, SST	38	4	05020803	NUT, .625-11, JAM, SST
8	1	00069642-B	MOUNTING PLATE WELDMENT, DR PULLEY, RR, SST	39	1	05051917	BELTING, HI-TEMP, 18" WIDE X 203" LG
9	2	00034094-B	MOUNTING PLATE WELDMENT, IDLER, SST	40	1	05050095	TAG, SERIAL NUMBER, 1.25" X 3.5" SS
10	1	00057815-B	COVER WELDMENT, CHAIN, SST	41	3	05016049	BOLT, .375-16 X 1.25, HHCS, SST
11	1	00057853-B	SPACER PLATE, SST	42	28	05016034	BOLT, .375-16 X 1, HHCS, SST
12	1	00057808	WIPER GATE DOOR	44	23	05016747	BOLT, .375-16 X 1.5, G5, CARRIAGE, SST
13	2	00057810-B	STRIP, DOOR, SST	45	8	05016204	BOLT, .5-13 X 1.750, HHCS, SST
14	2	00034078-B	COVER, CRANK, SST	47	50	05020891	NUT, .375-16, NYLON LOCK, SST
15	1	00078908-B	WIPER BRACE, SST	48	8	05020908	NUT, .5-13, NYLON LOCK, SST
16	1	00035711-B	HOLDER, DFTR, SST	49	24	05021390	WASHER, .375, FLAT, SST
17	1	00085088-B	WEAR PLATE, SST	50	4	05021392	WASHER, .375, LOCK, SST
18	1	00035713	RUBBER DEFLECTOR, FRONT	51	4	05016113	BOLT, .250-20, .750, HHCS, SST
19	1	00035712-B	HOLDER DFTR, BACK, SST	52	1	05050775	CARDBOARD BOX
20	1	00085089-B	WEAR PLATE, REAR, SST	53	4	05020982	NUT, 1-8, G2, JAM, HEX, 18-8 SST
21	1	00035714	RUBBER DEFLECTOR, BACK	54	4	05022182	PIN, .188 X 1.50" OAL, ROLL
22	8	00057831	SHAFT, ROLLER, CC	55	16	05021302	WASHER, .75, FLAT, SST
23	1	05006745	MOTOR, HYD, WHITE, 22.6 CUI <i>See page 42-43</i>	56	1	00078025	CRANK HANDLE WELDMENT, DOOR, MS
24	1	00078954	DRIVE ROLLER WELDMENT	57	1	00103682-B	CLAMP, CRANK HANDLE, CC, 304 SS
25	1	00078955	ADJ ROLLER WELDMENT	58	1	05016986	BOLT, .250-20 X 1, CGR, SS
26	1	00081651	WIPER, DOOR, CC, CHAMFERED	59	1	05021084	NUT, .250-20 WING, 1.063 SPAN SS
27	16	05051915	ROLLER, UHMW, 2.5 DIA X 7.25 LG	60	5	05021393	WASHER, .250, LOCK, SS
28	1	05033048	SPROCKET, 60B12FX1.0-.25" KW	61	2	00082658	PINION GEAR, CC, .188 HOLE, CRANK
29	1	05033047	SPROCKET, 60B16FX1.50-.375" KW	62	1	00109593	DECAL KIT, CROSS CONVEYOR, 103 SERIES <i>See page 26-27</i>
30	1	05036062	CHAIN ASSEMBLY, W/ CONNECTOR				
31	1	05050052	KEY MACHINERY, .375" X 2.50"				

# MOUNTING KIT, MS103



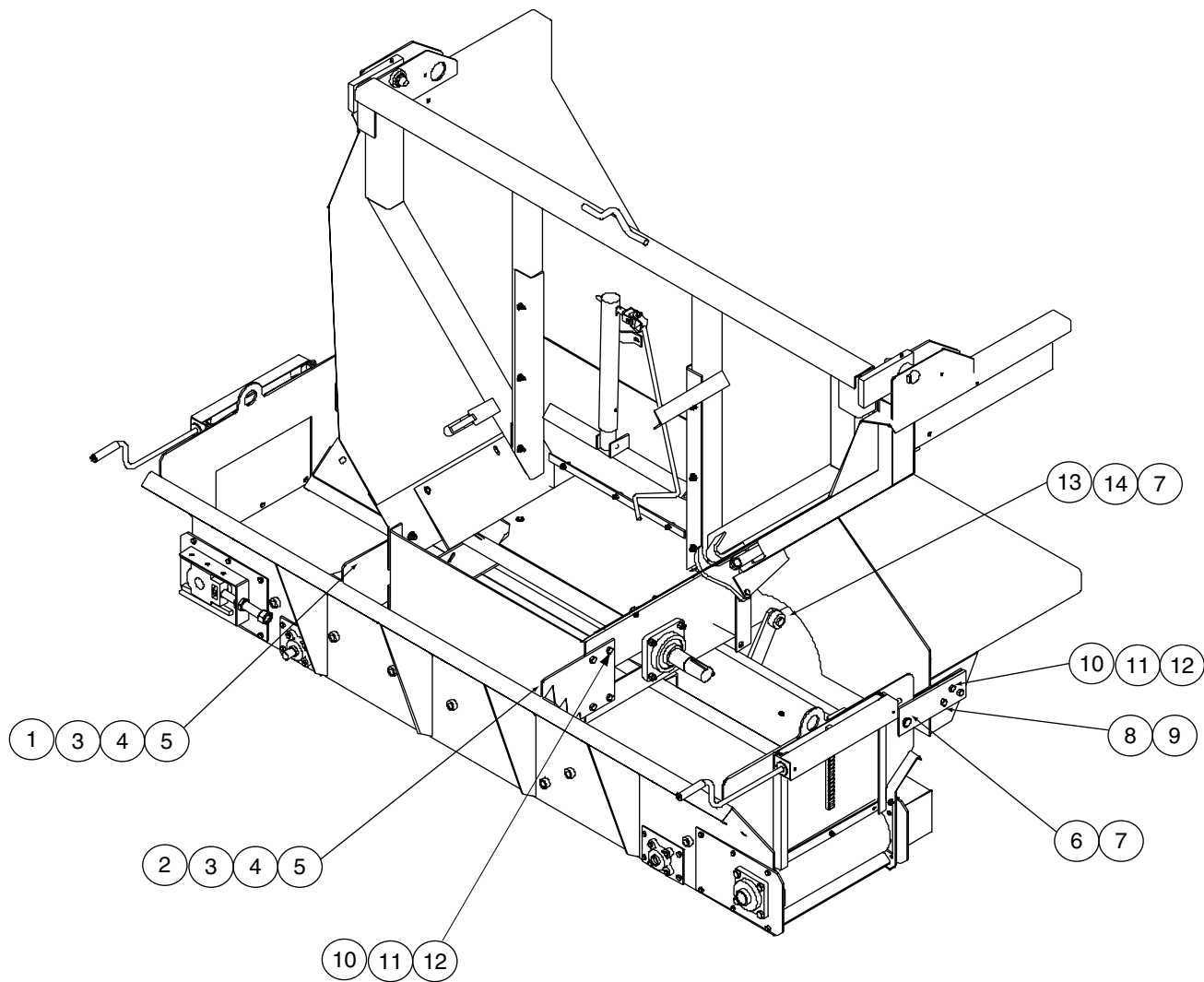
# 00057837-A/B MOUNTING KIT, CC, MS103, CROSS CONVEYOR BELT, TGT

Item	Qty	Part Number	Description
1	2	00035735-A 00035735-B	SPACER, DUMP BODY, MS SPACER, DUMP BODY, SST
2	4	00035741-A 00035741-B	MOUNT, DUMP BODY, MS MOUNT, DUMP BODY, SST
3	2	00035740-A 00035740-B	MOUNT, UNDER BODY, MS MOUNT, UNDER BODY, SST
4	4	00035736-A 00035736-B	HANGER, DUMP BODY, MS HANGER, DUMP BODY, SST
5	1	00057801-A 00057801-B	STRIP, DEFLECTOR, MS STRIP, DEFLECTOR, SST
6	1	00041988	DEFLECTOR, TRUCK PORTION
7	1	00021207-A 00021207-B	SHIELD, TAILGATE, RH, MS SHIELD, TAILGATE, RH, SST
8	1	00021208-A 00021208-B	SHIELD, TAILGATE, LH, MS SHIELD, TAILGATE, LH, SST
9	2	00020889	CHAIN HOLDER
10	2	05022168	PIN, CLEVIS, 1" DIA X 2" LONG, ZINC
11	4	05022175	PIN, CLEVIS, 1" DIA X 3" LONG ZINC
12	6	05022002	PIN, #8, HAIR
13	12	05021202	BUSHING, 1.50 X 1 X 10GA, ZINC
14	10	05010644 05016049	BOLT, .375-16 X 1.20, G8, HHCS, ZINC BOLT, .375-16 X 1.20, HHCS, SST
15	4	05010653 05016046	BOLT, .375-16 X 3.5, G8, HHCS, ZINC BOLT, .375-16 X 3.5, HHCS, SST
16	6	05010692 05016204	BOLT, .5-13 X 1.750, G8, HHCS, ZINC BOLT, .5-13 X 1.750, HHCS, SST
17	14	05020898 05020891	NUT, .375-16, GC, TOP LOCK, C&W NUT, .375-16, NYLON LOCK, SST
18	6	05020847 05020908	NUT, .5-13, GC, TOP LOCK, C&W NUT, .5-13, NYLON LOCK, SST
19	4	05021307 05021390	WASHER, .375, FLAT, ZINC WASHER, .375, FLAT, SST
20	6	05021309 05021391	WASHER, .50, FLAT, ZINC WASHER, .5, FLAT, SST



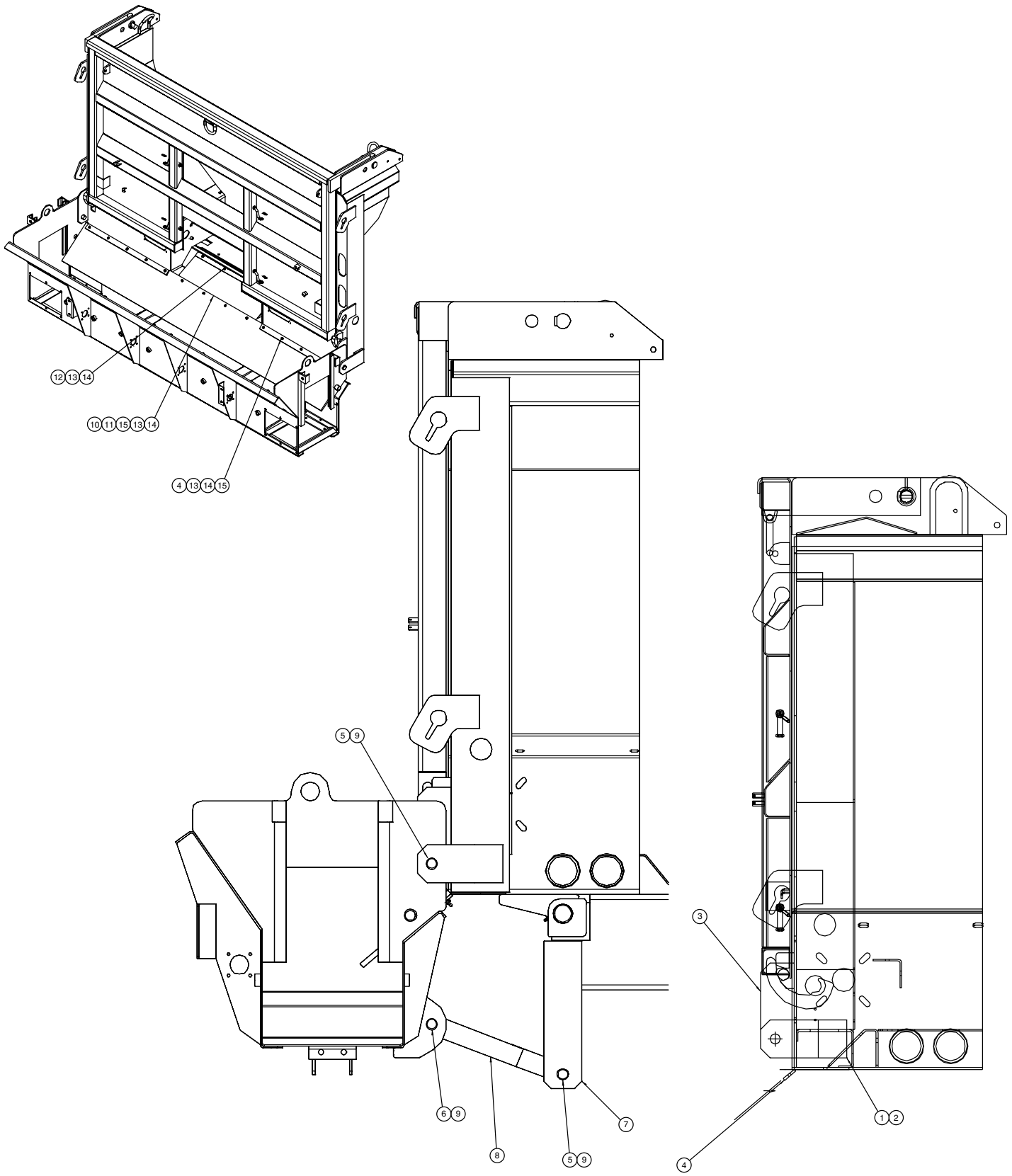
### 00109593 DECAL KIT, CROSS CONVEYOR, 103 SERIES

Item	Qty.	Part Number	Description
1	1	05051405	DECAL,21"x2.5",MONROE SPREADER
2	1	05050681	DECAL,3"x2",BONDED POWDER STRENGTH
3	2	05052309	DECAL,6.25"x3.25",DANGER,MOVING CONVEYOR
4	2	05051402	DECAL,8.25"x2.75",WARNING SPINNER
5	1	05052310	DECAL,4.25"x2.25",DANGER,KEEP GUARDS
6	1	05051404	DECAL,4.25"x3.50",CAUTION 1-6
7	1	05051403	DECAL,4.25"x2.25",SAFETY CHAIN COVER



### 00012890 MOUNTING KIT, CC, DM, REAR, MS

Item	Qty	Part Number	Description
1	1	00059598-A 00059598-B	CROSS CONVEYOR MOUNT WELDMENT, LH, MS CROSS CONVEYOR MOUNT WELDMENT, LH, SST
2	1	00059599-A 00059599-B	CROSS CONVEYOR MOUNT WELDMENT, RH, MS CROSS CONVEYOR MOUNT WELDMENT, RH, SST
3	4	05010644 05016049	BOLT, .375-16 X 1.25, G8, HHCS, ZINC BOLT, .375-16 X 1.25, HHCS, SST
4	4	05020898 05020891	NUT, .375-16, GC, TOP LOCK, C&W, GR C NUT, .375-16, NYLON LOCK, 316 SS
5	4	05021307 05021390	WASHER, .375, FLAT, ZINC WASHER, .375, FLAT, SST
6	4	05022168	PIN, CLEVIS, 1" DIA X 2" LONG ZINC
7	6	05022106	PIN, LYNCH, .188 DIA
8	4	00059508-A 00059508-B	MOUNT, DUZ-MOR, CC, MS MOUNT, DUZ-MOR, CC, SST
9	2	00035735-A 00035735-B	SPACER, DUMP BODY, CC, MS SPACER, DUMP BODY, CC, SST
10	14	05010692	BOLT, .5-13 X 1.75, G8, HHCS, ZINC
11	14	05020847 05020908	NUT, .5-13, GC, TOP LOCK, C&W NUT, .5-13, NYLON LOCK, 316 SST
12	10	05021309 05021391	WASHER, .5, FLAT, ZINC WASHER, .5, FLAT, SST
13	2	00073251-A 00073251-B	HANGER, DUMP BODY, CC, MS HANGER, DUMP BODY, CC, SST
14	4	00106595	BUSHING, 2.00D X 1.063ID X .938
15	2	05022115	PIN, 1 X 2.75, CLEVIS LATCH

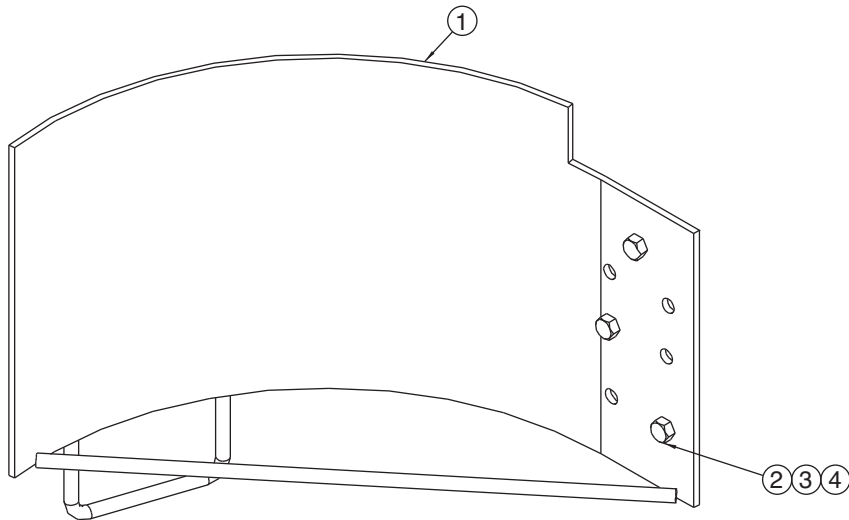
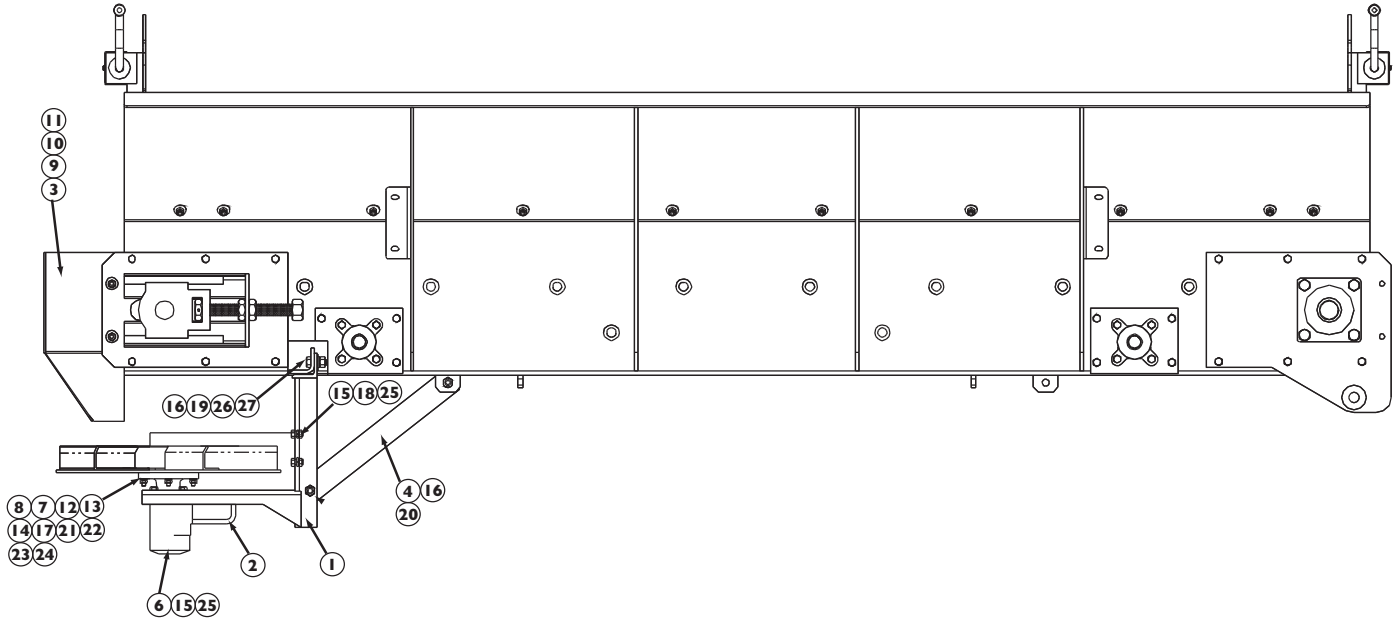




**00097560-A/B MOUNTING KIT, CC, RDS, SELF LEVELING**

<b>Item</b>	<b>Qty.</b>	<b>Part Number</b>	<b>Description</b>
1	2	00097550-A	MTG PL,CC,RDS,MS103,SIDE,MS
1	2	00097550-B	MTG PL,CC,RDS,MS103,SIDE,304
2	2	00061393	BAR .500 x 3.000 x 4.000,MS
2	2	00105662	BAR .500 x 3.000 x 4.000,304
3	2	00097551-A	MTG PL,CC,RDS,MS103,RR,MS
3	2	00097551-B	MTG PL,CC,RDS,MS103,RR,304
4	4	00097556-A	BOLT BAR,CC,RDS,MS
4	4	00097556-B	BOLT BAR,CC,RDS,304
5	4	05022168	PIN 1.00 x 2.00 CLEVIS ZC
6	2	05022175	PIN 1.00 x 3.00 CLEVIS ZC
7	2	00035740-A	MOUNT,UNDER BODY,CC,MS103,MS
8	4	00097553	BRACE,CC,RDS,MS103
9	6	05022002	PIN #8 HAIR
10	1	00097559-A	RAMP WLDMT,CC,RDS,MS
11	1	00097552	WIPER,CC,RDS,MS103,RR
12	4	05010593	BOLT .250-20 x 1.000 G8 HHCS ZC
12	4	05016040	BOLT .250-20 x 1.000 HHCS SST
13	18	05020899	NUT .250-20 GC TOPLOCK C&W
13	18	05020906	NUT .250-20 NYLON LOCK 316 SST
14	18	05021305	WASHER .250 FLAT ZC
14	18	05021403	WASHER .250 FLAT SST
15	14	05010595	BOLT .250-20 x 1.500 G8 HHCS ZC
15	14	05016038	BOLT .250-20 x 1.500 HHCS SST

## SPINNER KIT, CROSS CONVEYOR, BELT



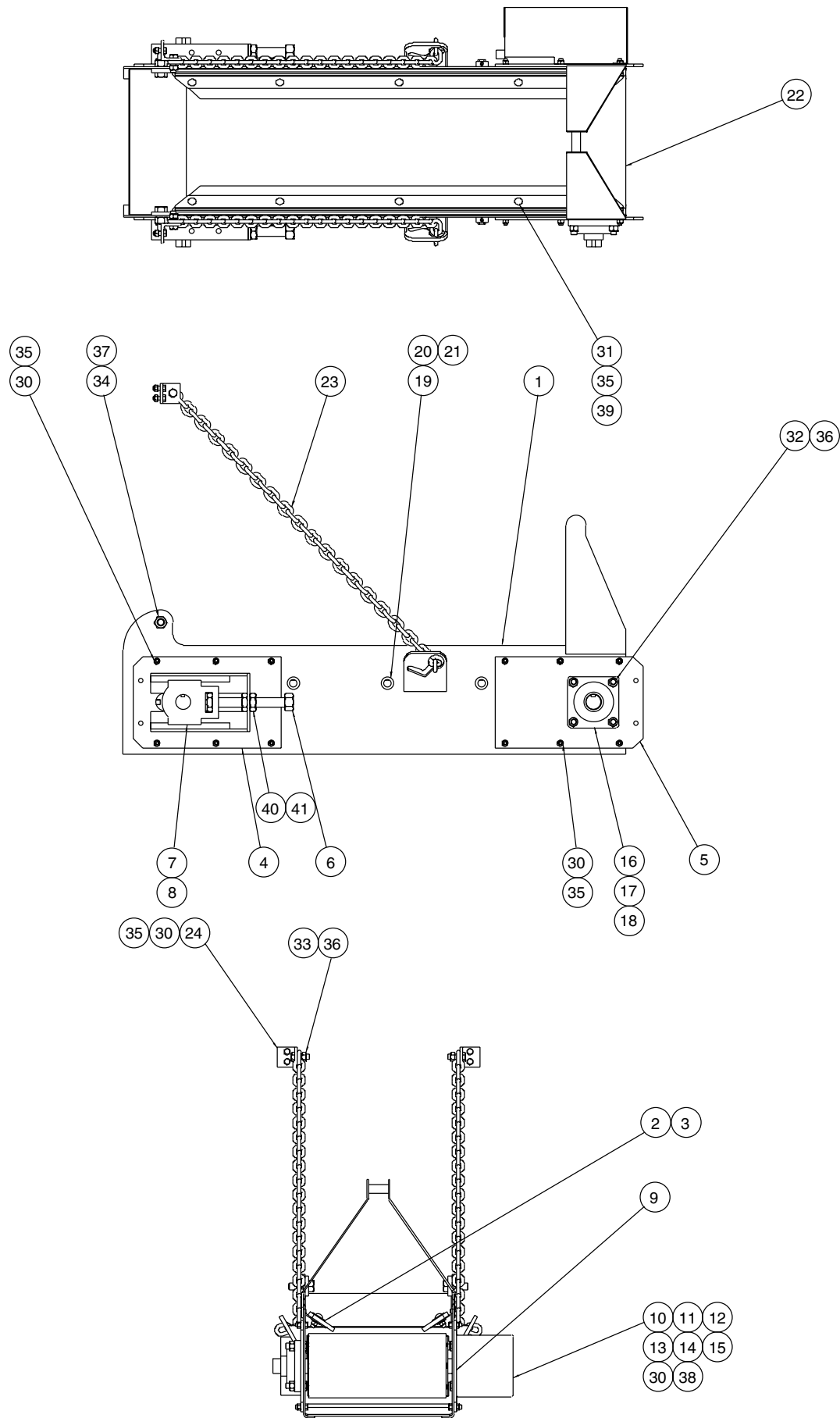
### 00019198 SHIELD KIT, CC, EXTENSION, LH

Item	Qty	Part Number	Description
1	1	00018582-A	Shield Weldment, MS
	1	00018582-B	Shield Weldment, SST
2	3	05010642	Bolt, $\frac{3}{8}$ -16 x $\frac{7}{8}$ , G8, HHCS, Zinc
	3	05016050	Bolt, $\frac{3}{8}$ -16 x $\frac{7}{8}$ , HHCS, SST
3	3	05020898	Nut, $\frac{3}{8}$ -16, GC, Top Lock, C&W
	3	05020891	Nut, $\frac{3}{8}$ -16, Nylon Lock, SST
4	3	05021365	Washer, $\frac{3}{8}$ , Lock, Zinc
	3	05021392	Washer, $\frac{3}{8}$ , Lock, SST

## SPINNER KIT, CROSS CONVEYOR, BELT

ITEM	QTY	PART #	DESCRIPTION
1	1	00026543-A	Frame Weldment, Spinner, MS
	1	00026543-B	Frame Weldment, Spinner, SST
2	1	00105117-A	Spinner Shield Weldment, LH, MS (Used on Right Side Spinner Assembly)
	1	00105117-B	Spinner Shield Weldment, LH, SST (Used on Right Side Spinner Assembly)
	1	00105118-A	Spinner Shield Weldment, RH, MS (Used on Left Side Spinner Assembly)
	1	00105118-B	Spinner Shield Weldment, RH, SST (Used on Left Side Spinner Assembly)
3	1	00057825-A	Chute Weldment, Spinner, 12, CC, MS
	1	00057825-B	Chute Weldment, Spinner, 12, CC, SST
	1	00057844-A	Chute Weldment, Spinner, 18, CC, MS
	1	00057844-B	Chute Weldment, Spinner, 18, CC, SST
4	1	00057812-A	Hanger, Spinner, CC, MS102, MS
	1	00057812-B	Hanger, Spinner, CC, MS102, SST
5	1	00059930-A	Bolt Kit, Spinner, CC, MS103, MS (Not Shown)
	1	00059930-B	Bolt Kit, Spinner, CC, MS103, SST (Not Shown)
6	1	05006673	Motor, Hydraulic, White, 3.2 CID, 1" Shaft (See pages 44-45)
7	1	05050071-B	Spinner CCW Disc
	1	05051054	Spinner CW Disc
8	1	05051380	Hub, Spinner Assembly
9	4	05010643	Bolt, $\frac{3}{8}$ - 16 x 1, G8, HHCS, Zinc
	4	05016034	Bolt, $\frac{3}{8}$ - 16 x 1, HHCS, SST
10	4	05020898	Nut, $\frac{3}{8}$ - 16, GC, Top Lock, C&W
	4	05020891	Nut, $\frac{3}{8}$ - 16, Nylon Lock, SST
11	8	05021307	Washer, $\frac{3}{8}$ , Flat, Zinc
	8	05021390	Washer, $\frac{3}{8}$ , Flat, SST
12	1	05015518	Bolt, $\frac{1}{4}$ - 20 x $\frac{3}{8}$ , Set Screw
13	1	05010593	Bolt, $\frac{1}{4}$ - 20 x 1, G8, HHCS, Zinc
	1	05016040	Bolt, $\frac{1}{4}$ - 20 x 1, HHCS, SST
14	4	05010620	Bolt, $\frac{5}{16}$ - 18 x 1 $\frac{1}{2}$ , G8, HHCS, Zinc
	4	05016140	Bolt, $\frac{5}{16}$ - 18 x 1 $\frac{1}{2}$ , HHCS, SST
15	6	05010642	Bolt, $\frac{3}{8}$ - 16 x $\frac{7}{8}$ , G8, HHCS, Zinc
	6	05016050	Bolt, $\frac{3}{8}$ - 16 x $\frac{7}{8}$ , G8, HHCS, SST
16	4	05010690	Bolt, $\frac{1}{2}$ - 13 x 1 $\frac{1}{4}$ , G8, HHCS, Zinc
	4	05016045	Bolt, $\frac{1}{2}$ - 13 x 1 $\frac{1}{4}$ , HHCS, SST
17	4	05020001	Nut, $\frac{5}{16}$ - 18, G8, Hex, Zinc
	4	05020855	Nut, $\frac{5}{16}$ - 18, Hex, SST
18	2	05020266	Nut, $\frac{3}{8}$ - 16, G8, Hex, Zinc
	2	05020842	Nut, $\frac{3}{8}$ - 16, Hex, SST
19	2	05020268	Nut, $\frac{1}{2}$ - 13, G8, Hex, Zinc
	2	05020848	Nut, $\frac{1}{2}$ - 13, Hex, SST
20	2	05020847	Nut, $\frac{1}{2}$ - 13, GC, Top Lock, C&W
	2	05020908	Nut, $\frac{1}{2}$ - 13, GC, Nylon Lock, SST
21	1	05021305	Washer, $\frac{1}{4}$ , Flat, Zinc
	1	05021403	Washer, $\frac{1}{4}$ , Flat, SST
22	1	05021363	Washer, $\frac{1}{4}$ , Lock
	1	05021393	Washer, $\frac{1}{4}$ , Lock, SST
23	4	05021306	Washer, $\frac{5}{16}$ , Flat, Zinc
	4	05021404	Washer, $\frac{5}{16}$ , Flat, SST
24	4	05021364	Washer, $\frac{5}{16}$ , Lock, Zinc
	4	05021407	Washer, $\frac{5}{16}$ , Lock, SST
25	6	05021365	Washer, $\frac{3}{8}$ , Lock, Zinc
	6	05021392	Washer, $\frac{3}{8}$ , Lock, SST
26	2	05021309	Washer, $\frac{1}{2}$ , Flat, Zinc
	2	05021391	Washer, $\frac{1}{2}$ , Flat, SST
27	2	05021367	Washer, $\frac{1}{2}$ , Lock, Zinc
	2	05021396	Washer, $\frac{1}{2}$ , Lock, SST

# CONVEYOR EXTENSION, 4', MS, 12" & 18"



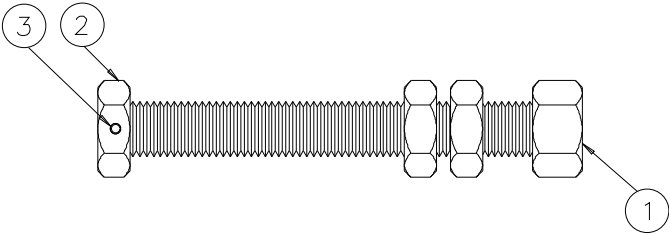
# 00089580-A SPREADER, CC, 4' X 12, EXT, MS

Item	Qty	Part Number	Description
1	1	00089574-A	LMBR WELDMENT, CC, EXT, 4' X 12, MS
2	2	00067442	DIVERTER, RUBBER, CROSS CONVEYOR, EXT
3	2	00067441-A	RETAINER BAR, DIVERTER, MS
4	2	00034094-A	MOUNTING PLATE WELDMENT, IDLER, MS
5	1	00034067-A	MOUNTING PLATE, DRIVE PULLEY, CC, MS
6	2	00057834-A	ADJUSTER BRG ASSEMBLY, MS <i>See page 37</i>
7	2	05030036	BEARING, 1.5 TAKE-UP, ECCENTRIC
8	1	00089579	ROLLER WELDMENT, CC, ADJ, BELT, 4' EXT
9	1	00034097-A	MOUNTING PLATE WELDMENT,DR, MS
10	1	00057815-A	COVER WELDMENT, CHAIN, MS
11	1	00057853-A	SPACER PLATE, MOTOR, CC, MS
12	1	05006745	MOTOR, HYD, WHITE, 22.6 CUI <i>See page 42-43</i>
13	1	05033048	SPROCKET, 60B 12FX1.0-.25" KW
14	1	05033047	SPROCKET, 60B 16FX1.50-.25" KW
15	1	05036062	CHAIN ASSEMBLY, W/ CONNECTOR, #608
16	1	00089578	ROLLER WELDMENT, CC, DRIVE, BELT, 4' EXT
17	1	05050121	KEY, .25 X .25 X 1.5
18	2	05030007	BEARING, 1.5" ID, 4-BOLT FLANGE
19	3	00057830	SHAFT, ROLLER, CC
20	6	05051916	ROLLER, UHMW 2.5 DIA X 7.25 LG
21	3	05021302	WASHER, .750, FLAT, SST
22	1	05052193	BELTING, HI-TEMP, 13.813 X 102
23	2	00058808	CHAIN, HIGH TEST, .375 X 42.750
24	2	00069641-A	BRACKET, MOUNT, CROSS CONVEYOR EXT, MS
25	1	05050112	WINCH, BRACKET, W/ BRAKE, 800#
26	1	05051162	CABLE ASSEMBLY, WINCH, .188 X 25', W/ HOOK
27	1	05051155	CABLE BLOCK/SWIVEL PULLEY ASSEMBLY
28	1	00069629-A	MOUNTING PLATE WELDMENT, WINCH, CROSS CONVEYOR
29	1	05016909	U-BOLT, ROUND, .375-16 X 1.250 X 2.5, ZINC, W/ NUTS
30	38	05010643	BOLT, .375-16 X 1, G8, HHCS, ZINC
31	10	05013987	BOLT, .375-16 X 1.25, G5, CARRIAGE, ZINC
32	8	05010692	BOLT, .5-13 X 1.750, G8, HHCS, ZINC
33	2	05010691	BOLT, .5-13 X 1.50, G8, HHCS, ZINC
34	2	05010764	BOLT, .750-10 X 2, G8, HHCS, ZINC
35	50	05020898	NUT, .375-16, GC, TOP LOCK, C&W
36	10	05020847	NUT, .5-13, GC, TOP LOCK, C&W
37	2	05020849	NUT, .750-10, GC, TOP LOCK, C&W
38	4	05021365	WASHER, .375, LOCK, ZINC
39	14	05021307	WASHER, .375, FLAT, ZINC
40	4	05020125	NUT, 1-8, G2, JAM, ZINC
41	2	05022182	PIN, .188 X 1.50" OAL, ROLL

## 00089580-B SPREADER, CC, 4' X 12, EXT, SST

Item	Qty	Part Number	Description
1	1	00089574-B	LMBR WELDMENT, CC, EXT, 4' X 12, SST
2	2	00067442	DIVERTER, RUBBER, CROSS CONVEYOR, EXT
3	2	00067441-B	RETAINER BAR, DIVERTER, SST
4	2	00034094-B	MOUNTING PLATE WELDMENT, IDLER, SST
5	1	00034067-B	MOUNTING PLATE, DRIVE PULLEY, CC, SST
6	2	00057834-B	ADJUSTER BRG ASSEMBLY, SST <i>See page 37</i>
7	2	05030036	BEARING, 1.5 TAKE-UP, ECCENTRIC
8	1	00089579	ROLLER WELDMENT, CC, ADJ, BELT, 4' EXT
9	1	00034097-B	MOUNTING PLATE WELDMENT, DR, SST
10	1	00057815-B	COVER WELDMENT, CHAIN, SST
11	1	00057853-B	SPACER PLATE, MOTOR, CC, SST
12	1	05006745	MOTOR, HYD, WHITE, 22.6 CUI <i>See page 42-43</i>
13	1	05033048	SPROCKET, 60B 12FX1.0-.25" KW
14	1	05033047	SPROCKET, 60B 16FX1.50-.25" KW
15	1	05036062	CHAIN ASSEMBLY, W/ CONNECTOR, #608
16	1	00089578	ROLLER WELDMENT, CC, DRIVE, BELT, 4' EXT
17	1	05050121	KEY, .25 X .25 X 1.5
18	2	05030007	BEARING, 1.5" ID, 4-BOLT FLANGE
19	3	00057830	SHAFT, ROLLER, CC
20	6	05051916	ROLLER, UHMW 2.5 DIA X 7.25 LG
21	3	05021302	WASHER, .750, FLAT, SST
22	1	05052193	BELTING, HI-TEMP, 13.813 X 102
23	2	00058808	CHAIN, HIGH TEST, .375 X 42.750
24	2	00069641-B	BRACKET, MOUNT, CROSS CONVEYOR EXT, SST
25	1	05050112	WINCH, BRACKET, W/ BRAKE, 800#
26	1	05051162	CABLE ASSEMBLY, WINCH, .188 X 25', W/ HOOK
27	1	05051155	CABLE BLOCK/SWIVEL PULLEY ASSEMBLY
28	1	00069629-B	MOUNTING PLATE WELDMENT, WINCH, CROSS CONVEYOR
29	1	05016909	U-BOLT, ROUND, .375-16 X 1.250 X 2.5, ZINC, W/ NUTS
30	38	05016034	BOLT, .375-16 X 1, HHCS, SST
31	10	05016746	BOLT, .375-16 X 1.25, CARRIAGE, SST
32	8	05016204	BOLT, .5-13 X 1.750, HHCS, SST
33	2	05016096	BOLT, .5-13 X 1.50, HHCS, SST
34	2	05016275	BOLT, .750-10 X 2, HHCS, SST
35	50	05020891	NUT, .375-16, NYLON LOCK, SST
36	10	05020908	NUT, .5-13, NYLON LOCK, SST
37	2	05020905	NUT, .750-10, NYLON LOCK, SST
38	4	05021392	WASHER, .375, LOCK, SST
39	14	05021390	WASHER, .375, FLAT, SST
40	4	05020982	NUT, 1-8, JAM, HEX, 18-8, SST
41	2	05022182	PIN, .188 X 1.50" OAL, ROLL

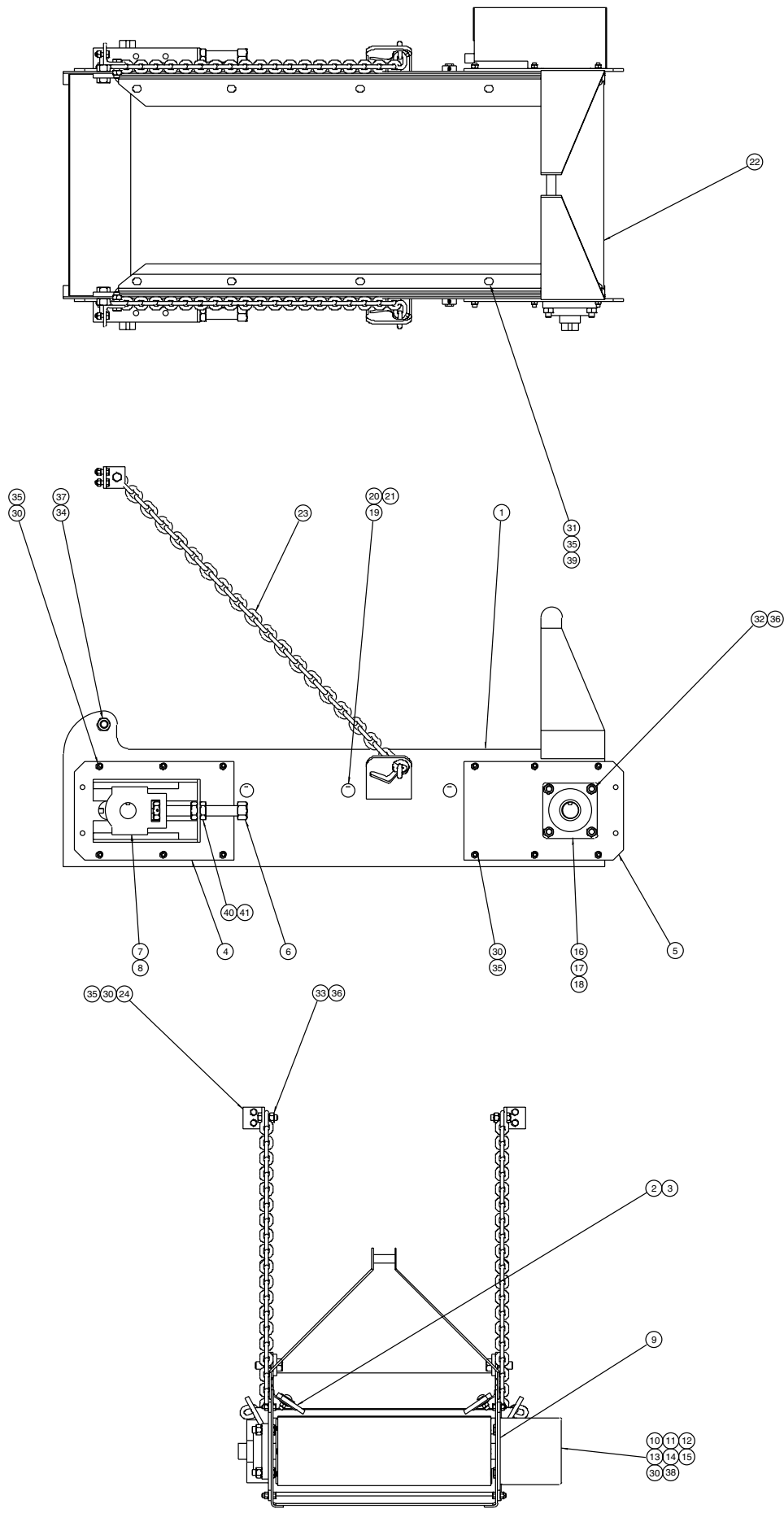
00057834-A, B ADJUSTER, BEARING ASSEMBLY, MS103



ITEM	QTY	PART #	DESCRIPTION
1	1	00057832-A	Adjuster Bearing Weldment, MS103, MS
		00057832-B	Adjuster Bearing Weldment, MS103, 304 Stainless Steel
2	3	05020125	Nut, 1-8, G2, Jam, Zinc
		05020982	Nut, 1-8, G2, Jam, Stainless Steel
3	1	05022110	Pin, 3/16 x 2, OAL Roll

57834

CONVEYOR EXTENSION, 4', 18"



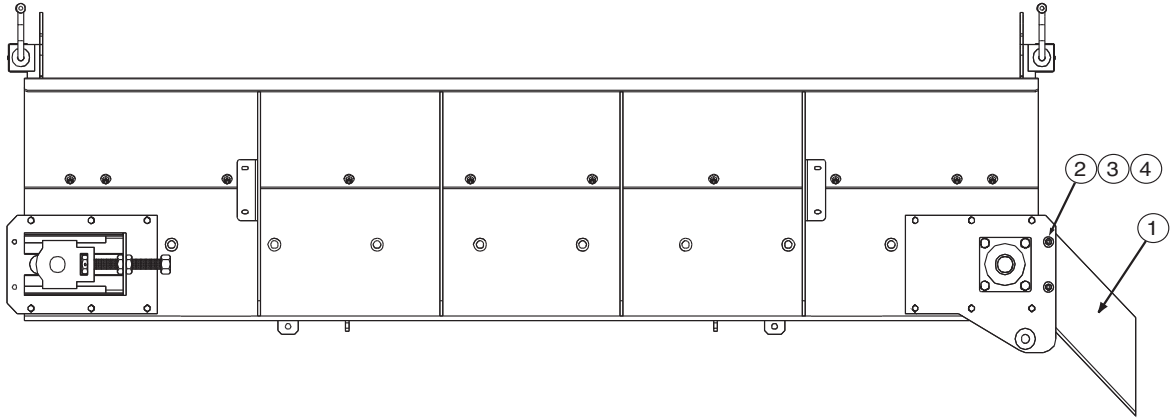


## 00089585-A SPREADER, CC, 4' X 18, EXT, REAR MS

Item	Qty	Part Number	Description
1	1	00089581-A	LMBR WELDMENT, CC, EXT, 4' X 18, MS
2	2	00067442	DIVERter, RUBBER, CROSS CONVEYOR, EXT
3	2	00067441-A	RETAINER BAR, DIVERter, MS
4	2	00034094-A	MOUNTING PLATE WELDMENT, IDLER, MS
5	1	00034067-A	MOUNTING PLATE, DRIVE PULLEY, CC, MS
6	2	00057834-A	ADJUSTER BRG ASSEMBLY, MS <i>See page 37</i>
7	2	05030036	BEARING, 1.5 TAKE-UP, ECCENTRIC
8	1	00089583	ROLLER WELDMENT, CC, ADJ, BELT, 4' EXT
9	1	00034097-A	MOUNTING PLATE WELDMENT, DR, MS
10	1	00057815-A	COVER WELDMENT, CHAIN, MS
11	1	00057853-A	SPACER PLATE, MOTOR, CC, MS
12	1	05006745	MOTOR, HYD, WHITE, 22.6 CUI <i>See page 42-43</i>
13	1	05033048	SPROCKET, 60B 12FX1.0-.25" KW
14	1	05033047	SPROCKET, 60B 16FX1.50-.25" KW
15	1	05036062	CHAIN ASSEMBLY, W/ CONNECTOR, #608
16	1	00089582	ROLLER WELDMENT, CC, DRIVE, BELT, 4' EXT
17	1	05050121	KEY, .25 X .25 X 1.5
18	2	05030007	BEARING, 1.5" ID, 4-BOLT FLANGE
19	3	00057831	SHAFT, ROLLER, CC
20	6	05051915	ROLLER, UHMW 2.5 DIA X 10.250 LG
21	3	05021302	WASHER, .750, FLAT, SST
22	1	05052194	BELTING, HI-TEMP, 19.813 X 102
23	2	00058808	CHAIN, HIGH TEST, .375 X 42.750
24	2	00069641-A	BRACKET, MOUNT, CROSS CONVEYOR EXT, MS
25	1	05050112	WINCH, BRACKET, W/ BRAKE, 800#
26	1	05051162	CABLE ASSEMBLY, WINCH, .188 X 25', W/ HOOK
27	1	05051155	CABLE BLOCK/SWIVEL PULLEY ASSEMBLY
28	1	00069629-A	MOUNTING PLATE WELDMENT, WINCH, CROSS CONVEYOR
29	1	05016909	U-BOLT, ROUND, .375-16 X 1.250 X 2.5, ZINC, W/ NUTS
30	38	05010643	BOLT, .375-16 X 1, G8, HHCS, ZINC
31	10	05013987	BOLT, .375-16 X 1.25, G5, CARRIAGE, ZINC
32	8	05010692	BOLT, .5-13 X 1.750, G8, HHCS, ZINC
33	2	05010691	BOLT, .5-13 X 1.50, G8, HHCS, ZINC
34	2	05010764	BOLT, .750-10 X 2, G8, HHCS, ZINC
35	50	05020898	NUT, .375-16, GC, TOP LOCK, C&W
36	10	05020847	NUT, .5-13, GC, TOP LOCK, C&W
37	2	05020849	NUT, .750-10, GC, TOP LOCK, C&W
38	4	05021365	WASHER, .375, LOCK, ZINC
39	14	05021307	WASHER, .375, FLAT, ZINC
40	4	05020125	NUT, 1-8, G2, JAM, ZINC
41	2	05022182	PIN, .188 X 1.50" OAL, ROLL

## 00089585-B SPREADER, CC, 4' X 18, EXT, SST

Item	Qty	Part Number	Description
1	1	00089581-B	LMBR WELDMENT, CC, EXT, 4' X 18, SST
2	2	00067442	DIVERTER, RUBBER, CROSS CONVEYOR, EXT
3	2	00067441-B	RETAINER BAR, DIVERTER, SST
4	2	00034094-B	MOUNTING PLATE WELDMENT, IDLER, SST
5	1	00034067-B	MOUNTING PLATE, DRIVE PULLEY, CC, SST
6	2	00057834-B	ADJUSTER BRG ASSEMBLY, SST <i>See page 37</i>
7	2	05030036	BEARING, 1.5 TAKE-UP, ECCENTRIC
8	1	00089583	ROLLER WELDMENT, CC, ADJ, BELT, 4' EXT
9	1	00034097-B	MOUNTING PLATE WELDMENT, DR, SST
10	1	00057815-B	COVER WELDMENT, CHAIN, SST
11	1	00057853-B	SPACER PLATE, MOTOR, CC, SST
12	1	05006745	MOTOR, HYD, WHITE, 22.6 CUI <i>See page 42-43</i>
13	1	05033048	SPROCKET, 60B 12FX1.0-.25" KW
14	1	05033047	SPROCKET, 60B 16FX1.50-.25" KW
15	1	05036062	CHAIN ASSEMBLY, W/ CONNECTOR, #608
16	1	00089582	ROLLER WELDMENT, CC, DRIVE, BELT, 4' EXT
17	1	05050121	KEY, .25 X .25 X 1.5
18	2	05030007	BEARING, 1.5" ID, 4-BOLT FLANGE
19	3	00057831	SHAFT, ROLLER, CC, MS10318
20	6	05051915	ROLLER, UHMW 2.5 DIA X 10.25 LG
21	3	05021302	WASHER, .750, FLAT, SST
22	1	05052194	BELTING, HI-TEMP, 19.813 X 102
23	2	00058808	CHAIN, HIGH TEST, .375 X 42.750
24	2	00069641-B	BRACKET, MOUNT, CROSS CONVEYOR EXT, SST
25	1	05050112	WINCH, BRACKET, W/ BRAKE, 800#
26	1	05051162	CABLE ASSEMBLY, WINCH, .188 X 25', W/ HOOK
27	1	05051155	CABLE BLOCK/SWIVEL PULLEY ASSEMBLY
28	1	00069629-B	MOUNTING PLATE WELDMENT, WINCH, CROSS CONVEYOR
29	1	05016909	U-BOLT, ROUND, .375-16 X 1.250 X 2.5, ZINC, W/ NUTS
30	38	05016034	BOLT, .375-16 X 1, HHCS, SST
31	10	05016746	BOLT, .375-16 X 1.25, CARRIAGE, SST
32	8	05016204	BOLT, .5-13 X 1.750, HHCS, SST
33	2	05016096	BOLT, .5-13 X 1.50, HHCS, SST
34	2	05016275	BOLT, .750-10 X 2, HHCS, SST
35	50	05020891	NUT, .375-16, NYLON LOCK, SST
36	10	05020908	NUT, .5-13, NYLON LOCK, SST
37	2	05020905	NUT, .750-10, NYLON LOCK, SST
38	4	05021392	WASHER, .375, LOCK, SST
39	14	05021390	WASHER, .375, FLAT, SST
40	4	05020982	NUT, 1-8, JAM, HEX, 18-8, SST
41	2	05022182	PIN, .188 X 1.50" OAL, ROLL



**OPTION: BERMING CHUTE KIT, 12"**  
**BERMING CHUTE KIT, 18"**

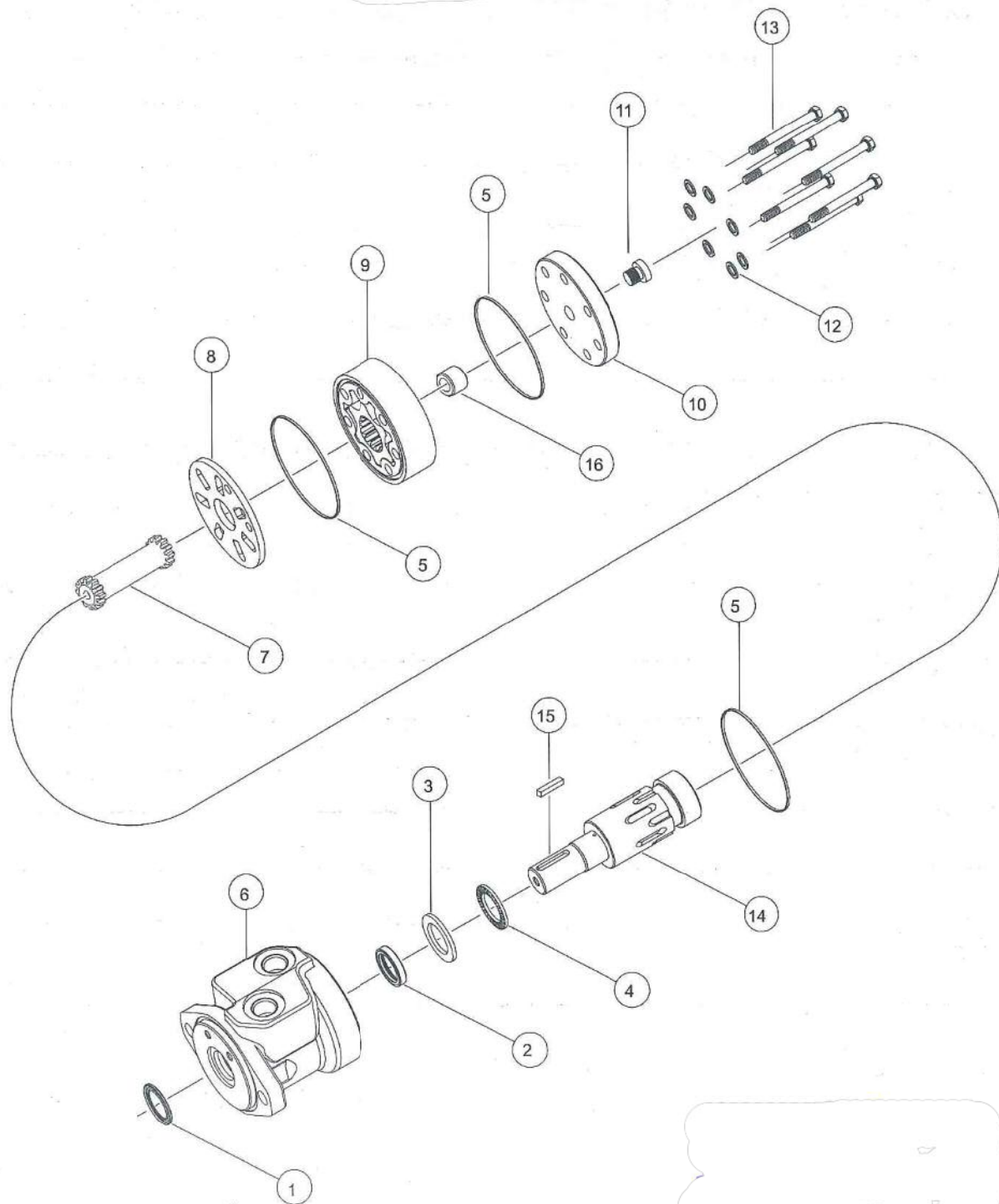
ITEM	QTY	PART #	DESCRIPTION
1	1	00057822-A	Chute Weldment, Berming, 12", CC, MS
	1	00057846-A	Chute Weldment, Berming, 18", CC, MS
	1	00057822-B	Chute Weldment, Berming, 12", CC, SST
	1	00057846-B	Chute Weldment, Berming, 18", CC, SST
2	4	05010643	Bolt, $\frac{3}{8}$ - 16 x 1, G8, HHCS, Zinc
	4	05016034	Bolt, $\frac{3}{8}$ - 16 x 1, HHCS, SST
3	4	05020898	Nut, $\frac{3}{8}$ - 16, GC, Top Lock, C&W
	4	05020891	Nut, $\frac{3}{8}$ - 16, Nylon Lock, SS
4	8	05021307	Washer, $\frac{3}{8}$ , Flat, Zinc
	8	05021390	Washer, $\frac{3}{8}$ , Flat, SST

57838

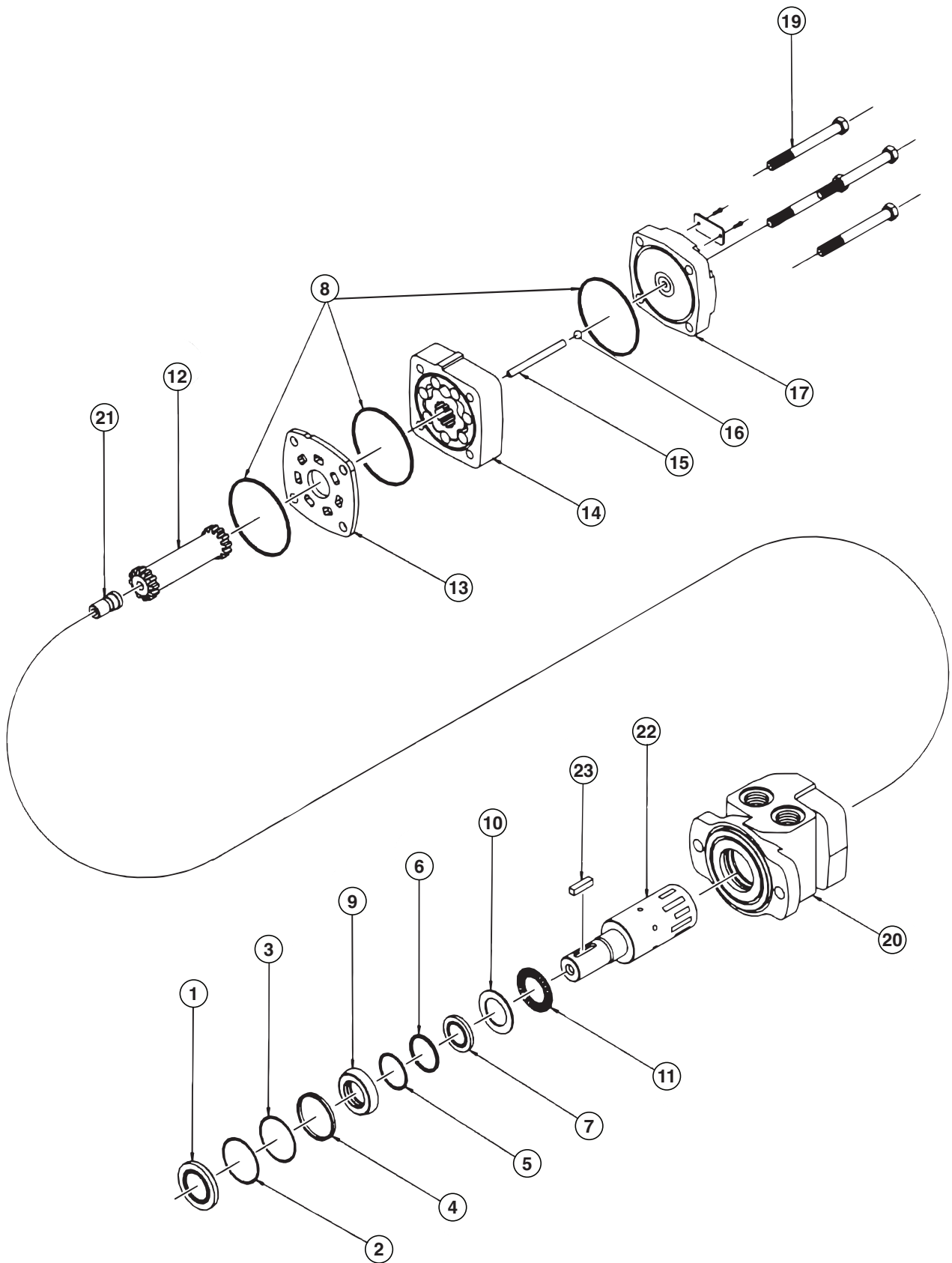
**OPTION: BI-DIRECTIONAL CROSS CONVEYOR CONTROL VALVE KIT**

1	1	05038209	Valve, 4-Way w/ Detent
2	1	05038235	Hose Kit, Rear Cross Conveyor

05006745 MOTOR, HYD, WHITE, 22.6CI, 4B, 1"

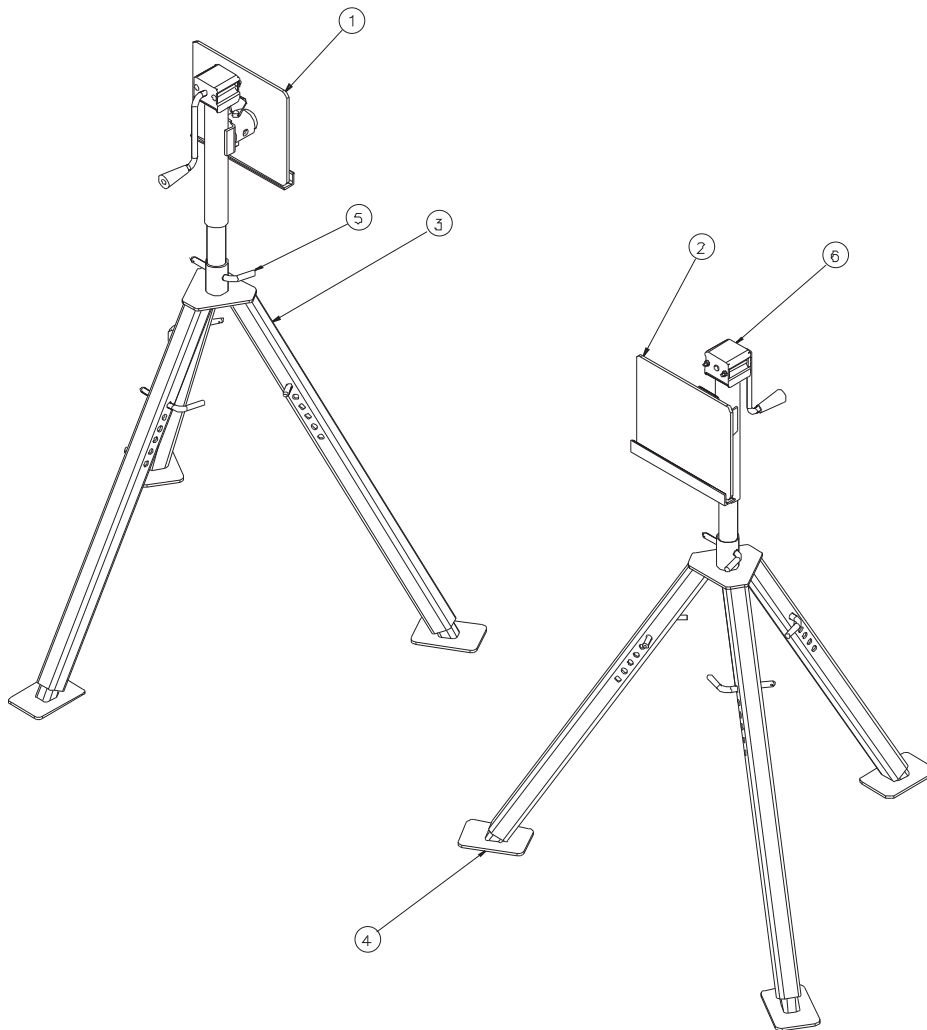


MOTOR ASSEMBLY PARTS LIST		
Item	Part Number	Description
1	Seal Kit 05006746	Dust Seal
2		Shaft Seal
3		Thrust Washer
4		Thrust Bearing (2)
5		Body Seals (3)



## MOTOR ASSEMBLY PARTS LIST

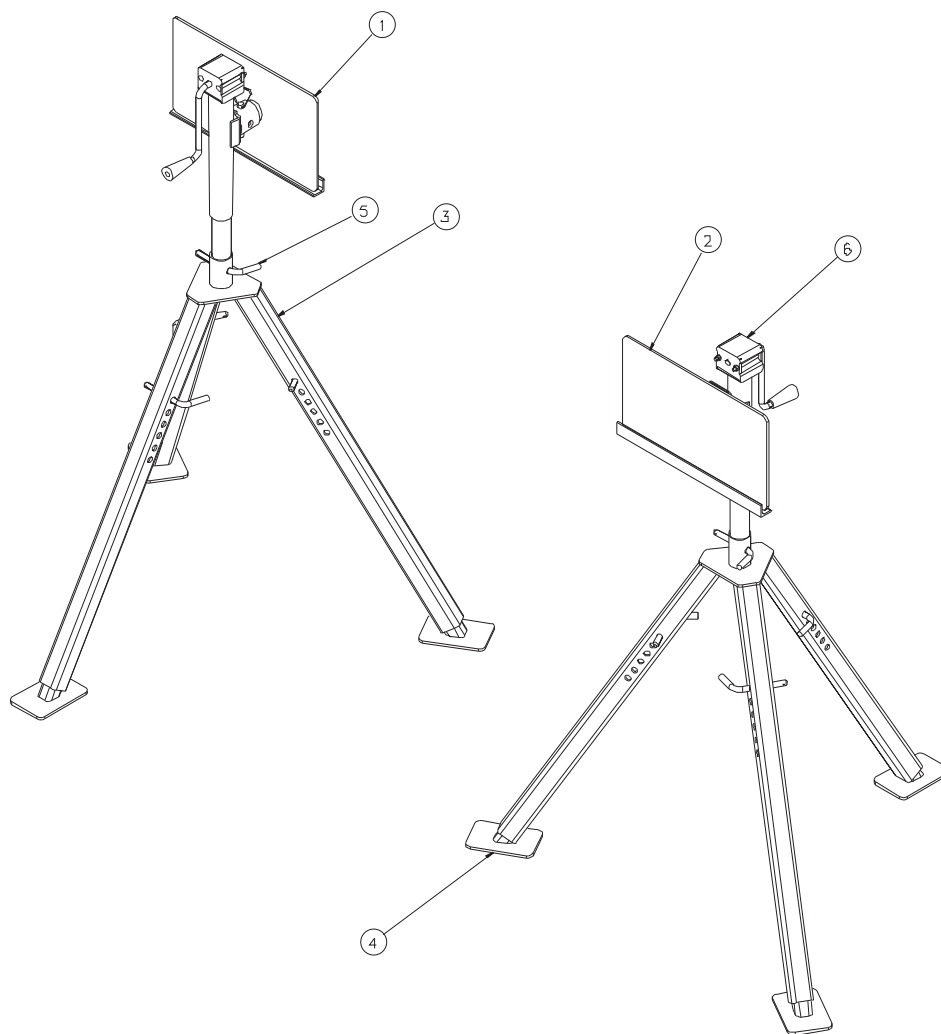
Item	Part Number	Description
1	Seal Kit 05006679	Dust Seal
2		Split Wire Ring
3		Metal Backup Shim
4		High Pressure Seal
5		Metal Backup Shim
6		Teflon Backup Shim
7		Shaft Seal
8		Body Seals (3)
9		Seal Carrier
10		Thrust Washer
11	---	Thrust Bearing
12	---	Drive Link Kit
13	---	Wear Plate
14	---	Rotor Kit
15	---	Drive Link Pin Kit
16	---	Included in item #15 Drive Link Pin Kit
17	---	End Cover
18	---	Serial Number Plate
19	---	Bolt Set Kit
20	05006564	Housing Kit, 4-Hole, w/ 7/8" O-Ring
21	---	Cooling Plug
22	05006410	Shaft Kit 1" Straight Speed Sensor
23	---	Key Kit, 1" Straight



### 00088888 LEG KIT, MS10312, REAR CROSS CONVEYOR

ITEM	QTY	PART #	DESCRIPTION
1	1	00089538-A	Mounting Plate Weldment, CC, LH, MS
	1	00089538-B	Mounting Plate Weldment, CC, LH, 304
2	1	00089537-A	Mounting Plate Weldment, CC, RH, MS
	1	00089537-B	Mounting Plate Weldment, CC, RH, 304
3	2	00088092-A	Leg Weldment, CC, Upper, MS
	2	00088092-B	Leg Weldment, CC, Upper, 304
4	6	00088091-A	Leg Weldment, CC, Lower, MS
	6	00088091-B	Leg Weldment, CC, Lower, 304
5	8	05022136	Pin, 1/2" x 4 1/2", 4" Grip Bent, Zinc
6	2	00088835	Jack Mod, CC





### 00049850 LEG KIT, MS10318, REAR CROSS CONVEYOR

ITEM	QTY	PART #	DESCRIPTION
1	1	00088093-A	Mounting Plate Weldment, CC, LH, MS
	1	00088093-B	Mounting Plate Weldment, CC, LH, 304
2	1	00088094-A	Mounting Plate Weldment, CC, RH, MS
	1	00088094-B	Mounting Plate Weldment, CC, RH, 304
3	2	00088092-A	Leg Weldment, CC, Upper, MS
	2	00088092-B	Leg Weldment, CC, Upper, 304
4	6	00088091-A	Leg Weldment, CC, Lower, MS
	6	00088091-B	Leg Weldment, CC, Lower, 304
5	8	05022136	Pin, 1/2" x 4 1/2", 4" Grip Bent, Zinc
6	2	00088835	Jack Mod, CC

## HOW TO ORDER PARTS

To order or inquire about replacement parts, please contact the distributor or store that the product was purchased through. To speed information flow, please have the following information ready:

- Model Number
- Serial Number
- Part Number and/or description as per the parts manual
- Quantity Needed

For further information about **Monroe Truck Equipment** replacement parts, please call 800-880-0109 and ask for **Snow & Ice Parts Sales**.

## RETURN POLICY

Merchandise returned to **Monroe Truck Equipment** must have a Warranty Service Request (WSR) form filled out completely and signed by authorized personnel. To get your WSR form, call 800-880-0109. For whole goods, ask for **Snow & Ice Sales**. For replacement parts, ask for **Snow & Ice Parts Sales**. All returned items are subject to a 15% restocking fee and must be sent freight prepaid!



1051 West 7<sup>th</sup> Street  
Monroe, WI 53566  
608-328-8127 ~ Fax: 608-328-4278

## **Warranty Policy**

### **Uninstalled Parts and Equipment Provided by Monroe Truck Equipment**

Monroe Truck Equipment will provide the following limited warranty for a period of one year to the original purchaser of all uninstalled goods provided by Monroe Truck Equipment:

**LIMITED WARRANTY:** All goods provided by Monroe Truck Equipment (MTE) will be free from defects in material and workmanship for a period of one year from the date of purchase by the original purchaser. This limited warranty shall be the sole and exclusive remedy for any such product found to be defective. This limited warranty supercedes all previous warranties and is exclusive and in lieu of all other warranties, whether expressed or implied.

This limited warranty applies only to parts or accessories manufactured by MTE and/or provided by same. Except with respect to title, this limited warranty does not pertain to parts or accessories not manufactured and/or provided by MTE, regardless of whether such parts or accessories were selected and/or recommended by MTE. MTE will, as a service to the buyer, pass on any warranties received from the original manufacturer of MTE provided parts and/or accessories.

MTE will not under any circumstances be liable for any incidental or consequential damages whether in tort, contract, or otherwise, for any bodily injury, death, property damage, loss of use, or loss of income resulting from or in any way arising out of any goods provided by MTE, or their sale, use, or manufacture.

Any warranty claim deemed to be arising from the result of misuse, abuse, neglect, accident, improper installation, lack of maintenance, act of war (whether declared or otherwise), or act of God will be denied. Any repair or modification by the buyer or any third party, without the prior written consent of MTE, will void any possible warranty compensation. Any damage deemed to be the result of abnormal operation will not be compensated by this warranty.

Normal or special maintenance items such as fuels, fluids, tires, belts, hoses, filters, air cleaners, light bulbs, and any other items subject to normal wear and tear that are supplied in connection with goods provided by MTE are not allowed under this warranty.

All engines, pumps, cylinders, valves, and motors are warranted by their manufacturer and not by Monroe Truck Equipment. The manufacturer's warranty will apply to these parts. Electrical and hydraulic components are not to be disassembled without the express written consent of MTE. Any disassembly of MTE provided components without prior authorization will void the applicable warranty.

Monroe Truck Equipment shall be the sole and final determining authority as it applies to the administration of this warranty policy. Purchaser acknowledges receipt of Monroe Truck Equipment Warranty Policy and agrees to be bound by same.



**GLOBAL SOLUTIONS**  
ARMORED VEHICLES ~ SPORT TRUCK CONVERSIONS  
MUNICIPAL SNOW & ICE CONTROL ~ FIRE APPARATUS  
PICKUP TRUCK ACCESSORIES ~ TRUCK EQUIPMENT/MODIFICATIONS





1051 W. 7<sup>th</sup> Street • Monroe, WI 53566  
800-880-0109 • 608-329-8105 • FAX 608-328-8390  
E-mail: [snowandicecontrol@monroetruck.com](mailto:snowandicecontrol@monroetruck.com) • Website: [www.monroetruck.com](http://www.monroetruck.com)

## MONROE TRUCK EQUIPMENT, INC. WARRANTY SNOW & ICE CONTROL PRODUCTS

**Monroe Truck Equipment, Inc.** warrants to the original purchaser, that if any part of the product proves to be defective in workmanship or material with **ONE YEAR** of the original installation, and is returned to us with 30 days of the discovered defect, we will (at our option) repair or replace the defective part. This warranty does not apply to damage resulting from misuse, neglect, accident, improper installation, normal wear items or lack of maintenance. This warranty is exclusive and supersedes all other warranties, whether expressed or implied. **Monroe Truck Equipment, Inc.** neither assumes, nor authorizes anyone to assume for it, any other obligation or liability in connection with this warranty and will not be liable for consequential damages.

All engines, pumps, motors, cylinders and valves are warranted by their manufacturer and not by **Monroe Truck Equipment, Inc.** The manufacturer's warranty will apply to these parts. Electrical and hydraulic components are not to be disassembled without the express written permission of **Monroe Truck Equipment, Inc.** Use of replacement parts other than original equipment voids this warranty.

All defective parts returned must be accompanied by the model number, serial number, date installed, date of defect, description of defect, and the name of the distributor from whom it was purchased. All warranty claims must have prior written approval from **Monroe Truck Equipment, Inc.**

**Please return the warranty registration card that accompanies this manual to confirm receipt of this parts catalog and acknowledge the information contained within. Failure to return the attached card may result in a voided warranty.**



Reversible & One-way Snowplows • Airport Snowplow • Heavy Duty Patrol Wing  
Heavy Duty Benching Wing • Monroe Underbody Scraper • Heavy Duty V-box Spreader  
Under Tailgate Spreader • Pickup V-box Spreader • Replacement Tailgate Spreader  
Anti-Icing/De-icing & Vegetation Sprayer • Construction Attachments





1051 West 7<sup>th</sup> Street  
Monroe, WI 53566  
608-328-8127 ~ Fax: 608-328-4278

Any and all warranty claims must be forwarded to MTE within 10 days of defect discovery. A copy of the original Monroe Truck Equipment invoice as well as the manufacturer's model number, serial number, and date of installation must accompany all correspondence regarding said claims. MTE will, at their option, choose whether to repair or replace the defective part unless otherwise specified by the original manufacturer of said part.

### **Procedures for Warranty Claims Notification**

For submission of any warranty claim please contact Monroe Truck Equipment – Warranty Department at 800-356-8134

The following documentation will be needed when you call for initial warranty authorization:

1. A copy of the original MTE invoice.
2. Make, Model, and VIN or Serial Number of the equipment involved.
3. Part number and serial number of the part in question.
4. A complete description of the problem.

The following must accompany any claim submitted to Monroe Truck Equipment:

1. Documented photographs of any physical damage.
2. Inspection notes by MTE personnel or MTE authorized 3<sup>rd</sup> party.
3. Authorization number issued by Monroe Truck Equipment – Warranty Department.

**Defective parts must be returned to Monroe Truck Equipment (freight prepaid) within 30 days of issuance of Authorization Number.**

**Monroe Truck Equipment reserves the right to void any warranty for failure to comply with Monroe Truck Equipment Warranty Policy.**

**This policy is effective October 11, 2012**



