



REPLACEMENT TAILGATE SPREADER

5-YARD AND LARGE DUMP BODIES

Service and Parts Manual



Monroe Snow & Ice Control

A Division of Monroe Truck Equipment

1051 W. 7th Street

Monroe, WI 53566

Phone: 608-328-8127

Fax: 608-329-8488

Website: www.monroetruck.com

Email: snowandicecontrol@monroetruck.com

05090358-4

5/28/2014



TABLE OF CONTENTS

Safety Instructions	2
Maintenance Instructions	3
Replacement Parts	4-35
How to Order Parts	36
Return Policy	36
Warranty Registration	37-39

SAFETY INSTRUCTIONS

- Read all installation, safety and maintenance instructions completely before operating this equipment
- Keep all personnel clear of moving parts while equipment is being operated.
- Do not operate equipment in need of maintenance! Repair immediately!
- While operating this equipment, use common sense, use caution, be alert and be safety-conscious.

GENERAL INFORMATION

- Location descriptions are noted in direction of travel. (i.e. front, rear, left and right.)
- Delivery of replacement parts is subject to our sales delivery terms.
- Use only **Monroe Truck Equipment** O.E.M. replacement parts. Failure to do so will void warranty.
- Replacement parts listed in this manual reflect our most common items. If you do not find the part you require, please call your distributor.
- **Monroe Truck Equipment** reserves the right to make revisions or alterations to this parts manual without notice.

MAINTENANCE INSTRUCTIONS

In Season:

- Check for loose bolts and nuts daily, and re-torque before use. (Failure to inspect equipment on a daily basis may seriously affect safety and/or efficiency.)
- Lubricate all grease fittings every ten hours of normal use and more frequently under heavy use.
- A cross over relief valve (1800 PSI) **MUST** be plumbed into the reversing circuit.
- Check all hydraulic fittings for tightness on a regular basis.
- System pressure should **NOT** exceed 2000 PSI.
- Check cutting edge for wear. Do not let cutting edge wear closer than $\frac{1}{2}$ " to $\frac{3}{8}$ " from the bottom angle of the moldboard.
- Due to the nature of use and environment this plow is operating in, damage and wear may occur at any time. Therefore, **Monroe Truck Equipment** recommends the end user establish and follow a daily inspection routine before using this plow.

Off Season:

- Use care when disconnecting hydraulic lines to assure that no dirt or foreign objects enter the hydraulic system. Use caps to cover hydraulic hose fittings and insert plugs in hydraulic ports.
- Hydraulic cylinders should be fully retracted when stored during the off season to prevent damage or corrosion. The remaining exposed shaft surface should be coated with a thick grease to prevent corrosion, which must be removed before returning to regular service.
- Check mounting bolts for wear and/or damaged threads and replace before next season.

**SPREADER, REPLACEMENT TAILGATE, RTS, 6" AUGER
REVERSE FLIGHT, CENTER DISCHARGE AND ONE WAY**

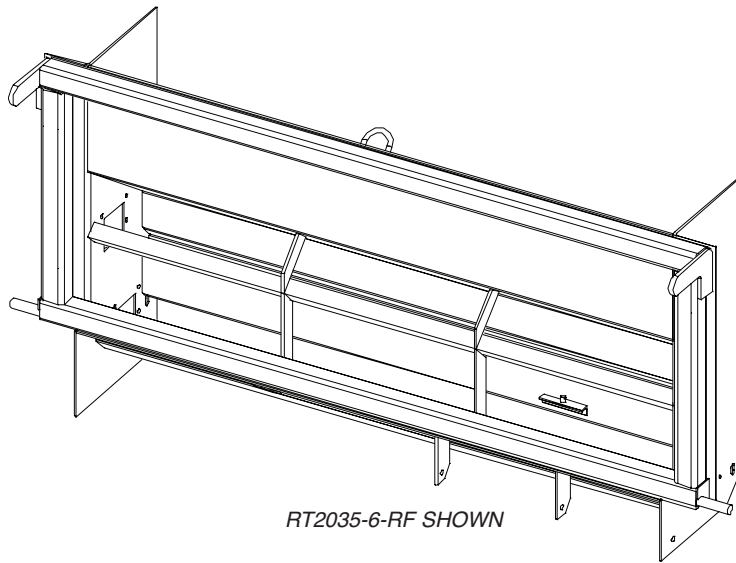
Item	Qty	Part Number	Description
1	1	See Pages	TROUGH WELDMENT
2	1	See Pages	TROUGH BOTTOM WELDMENT
3	1	See Pages	AUGER KIT
4	1	See Pages	AGITATOR WELDMENT
5	1	00041644-A 00041644-B 00041644-C	ANTI-FLOW PLATE WELDMENT, MS ANTI-FLOW PLATE WELDMENT, 304 SST ANTI-FLOW PLATE WELDMENT, AUSST
6	1	05022035	PIN, #11, HAIR ZINC
7	2	00021724-A 00021724-B	BEARING KIT, 1.25, 2-BOLT, MS BEARING KIT, 1.25, 2-BOLT, 304 SST
8	1	00086589-A 00086589-B 00086589-C	DRIVE KIT, MS DRIVE KIT, 304 SST DRIVE KIT, AUSST
9	1	00057875-A 00057875-B	MOUNTING KIT, RT/RTS, MS MOUNTING KIT, RT/RTS, 304 SST
10	1	00058134	DECAL KIT, TGT SPREADER, GB/DD
11	1	05050095	TAG, SERIAL NUMBER, 1.25" X 3.5" SS

**SPREADER, REPLACEMENT TAILGATE, RTS,
9" AUGER, REVERSE FLIGHT**

Item	Qty	Part Number	Description
1	1	See Pages	TROUGH WELDMENT
2	1	See Pages	TROUGH BOTTOM WELDMENT
3	1	See Pages	AUGER WELDMENT
4	1	See Pages	AGITATOR WELDMENT
5	1	00022767-A 00022767-B	ANTI-FLOW PLATE WELDMENT, MS ANTI-FLOW PLATE WELDMENT, 304 SST
6	1	00019615-A 00019615-B	DRIVE KIT, RTS, MS DRIVE KIT, RTS, 304 SST
7	1	00021724-A 00021724-B	BEARING KIT, 1.25, 2-BOLT, MS BEARING KIT, 1.25, 2-BOLT, 304 SST
8	1	00022783-A 00022783-B	BEARING KIT, 4-HOLE, 1.5" MS BEARING KIT, 4-HOLE, 1.5" 304 SST
9	1	05022035	PIN, #11, HAIR, ZINC
10	1	00057875-A 00057875-B	MOUNTING KIT, RT/RTS, MS MOUNTING KIT, RT/RTS, 304 SST
11	1	00058134	DECAL KIT, TGT SPREADER, GB/DD
12	1	05050095	TAG, SERIAL NUMBER, 1.25" X 3.5" SS

**SPREADER, REPLACEMENT TAILGATE, RTS,
9" AUGER, DUAL DISCHARGE**

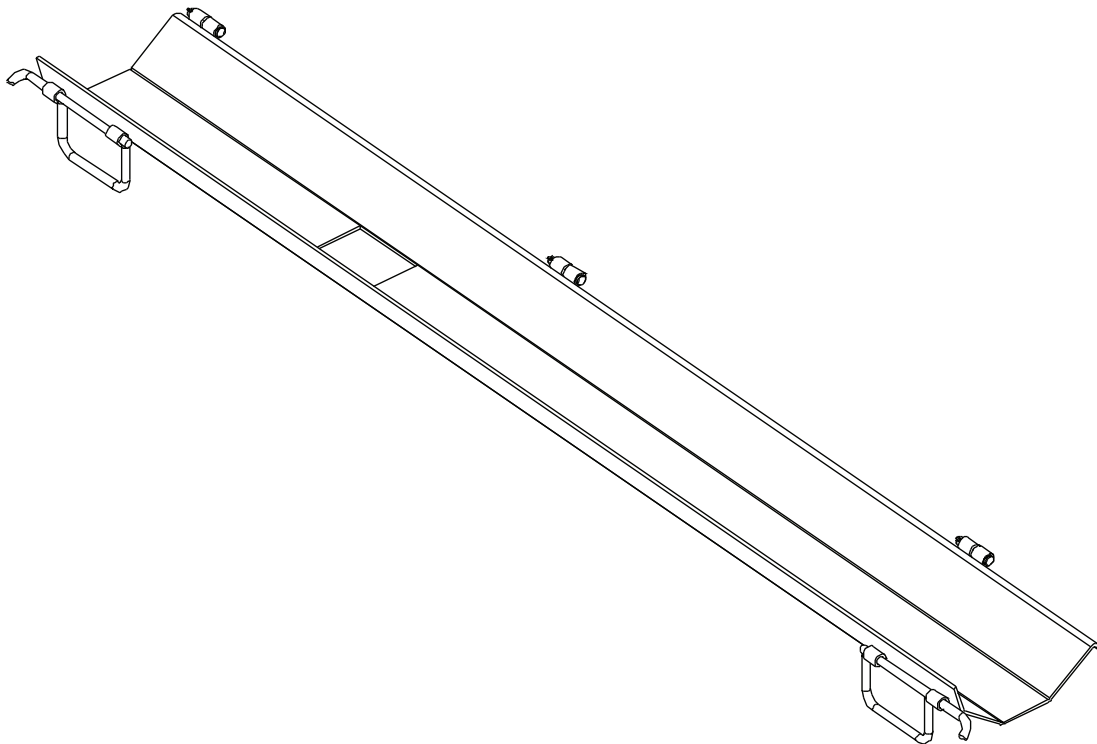
Item	Qty	Part Number	Description
1	1	See Pages	TROUGH WELDMENT
2	1	See Pages	TROUGH BOTTOM WELDMENT
3	1	See Pages	AUGER WELDMENT
4	1	See Pages	AGITATOR WELDMENT
5	1	00022767-A 00022767-B	ANTI-FLOW PLATE WELDMENT, MS ANTI-FLOW PLATE WELDMENT, 304 SST
6	1	00019606-A 00019606-B	COVER, TROUGH BOTTOM, MS COVER, TROUGH BOTTOM, 304 SST
7	1	00019615-A 00019615-B	DRIVE KIT, RTS, MS DRIVE KIT, RTS, 304 SST
8	1	00021724-A 00021724-B	BEARING KIT, 1.25, 2-BOLT, MS BEARING KIT, 1.25, 2-BOLT, 304 SST
9	1	00022783-A 00022783-B	BEARING KIT, 4-HOLE, 1.5" MS BEARING KIT, 4-HOLE, 1.5" 304 SST
10	1	05022035	PIN, #11, HAIR, ZINC
11	3	05010643 05016034	BOLT, .375-16 X 1, G8, HHCS, ZINC BOLT, .375-16 X 1, HHCS, SST
12	3	05020898 05020891	NUT, .375-16, GC, TOP LOCK, C&W NUT, .375-16, NYLON LOCK, 316 SST
13	3	05021307 05021390	WASHER, .375, FLAT, ZINC WASHER, .375, FLAT, SST
14	1	00057875-A 00057875-B	MOUNTING KIT, RT/RTS, MS MOUNTING KIT, RT/RTS, 304 SST
15	1	00058134	DECAL KIT, TGT SPREADER, GB/DD
16	1	05050095	TAG, SERIAL NUMBER, 1.25" X 3.5" SS



RT2035-6-RF SHOWN

RTS SPREADER TROUGH WELDMENTS

		Qty	Part Number	Description
6" AUGER	CENTER DISCHARGE	1	00086596-A 00086596-B	TROUGH WELDMENT, RTS2035-6-CD, MS TROUGH WELDMENT, RT2035-6-CD, 304 SST
			00017442-A 00017442-B	TROUGH WELDMENT, RT3645-6-CD, MS TROUGH WELDMENT, RT3645-6-CD, 304 SST
			00017470-A 00017470-B	TROUGH WELDMENT, RT4655-6-CD, MS TROUGH WELDMENT, RT4655-6-CD, 304 SST
6" AUGER	REVERSE FLIGHT	1	00086568-A 00086568-B 00086568-C	TROUGH WELDMENT, RT2035-6-RF, MS TROUGH WELDMENT, RT2035-6-RF, 304 SST TROUGH WELDMENT, RT2035-6-RF, AUSST
			00089232-A 00089232-B	TROUGH WELDMENT, RT3645-6-RF, MS TROUGH WELDMENT, RT3645-6-RF, 304 SST
			00017445-A 00017445-B	TROUGH WELDMENT, RT4655-6-RF, MS TROUGH WELDMENT, RT4655-6-RF, 304 SST
9" AUGER		1	00019654-A 00019654-B	TROUGH WELDMENT, RT3645-9-RF, MS TROUGH WELDMENT, RT3645-9-RF, 304 SST
			00095340-A 00095340-B	TROUGH WELDMENT, RT4655-9-RF, MS TROUGH WELDMENT, RT4655-9-RF, 304 SST
6" AUGER	ONE WAY	1	00089221-A 00089221-B	TROUGH WELDMENT, RT2035-6-OW, MS TROUGH WELDMENT, RT2035-6-OW, 304 SST
			00017439-A 00017439-B 00096712-A 00096712-B 00096712-C	TROUGH WELDMENT, RT3645-6-OW, MS TROUGH WELDMENT, RT3645-6-OW, 304 SST TROUGH WELDMENT, RTS3645-6-OW, MS TROUGH WELDMENT, RTS3645-6-OW, 304 SST TROUGH WELDMENT, RTS3645-6-OW, AUS
			00017468-A 00017468-B	TROUGH WELDMENT, RT4655-6-OW, MS TROUGH WELDMENT, RT4655-6-OW, 304 SST
9"	DUAL DISCHARGE	1	00019636-A 00019636-B	TROUGH WELDMENT, RT3645-9-DD, MS TROUGH WELDMENT, RT3645-9-DD, 304 SST
			00095322-A 00095322-B	TROUGH WELDMENT, RT4655-9-DD, MS TROUGH WELDMENT, RT4655-9-DD, 304 SST



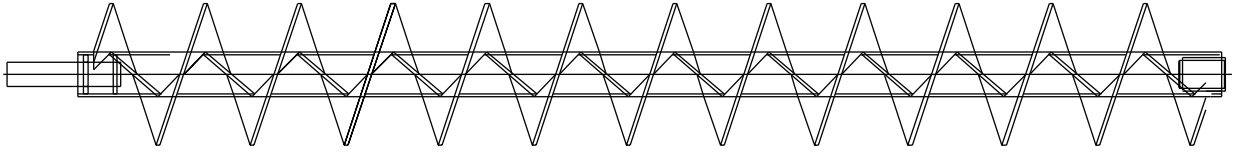
RT2035-6-RF SHOWN

RTS TROUGH BOTTOM WELDMENTS			
Qty	Part Number	Description	
6"	1	00021483-A	TROUGH BOTTOM WELDMENT, 6, CD, MS
		00021483-B	TROUGH BOTTOM WELDMENT, 6, CD, 304 SST
		00021451-A	TROUGH BOTTOM WELDMENT, 6, RF, MS
		00157153-A	TROUGH BOTTOM WELDMENT, 6, RF, MS
		00021451-B	TROUGH BOTTOM WELDMENT, 6, RF, 304 SST
		00157153-B	TROUGH BOTTOM WELDMENT, 6, RF, 304 SST
		00021451-C	TROUGH BOTTOM WELDMENT, 6, RF, AUSST
		00021678-A	TROUGH BOTTOM WELDMENT, 6, OW, MS
		00021678-B	TROUGH BOTTOM WELDMENT, 6, OW, 304 SST
9"	1	00019605-A	TROUGH BOTTOM WELDMENT, 9, DD, MS
		00019605-B	TROUGH BOTTOM WELDMENT, 9 DD, 304 SST
		00019658-A	TROUGH BOTTOM WELDMENT, 9, RF, MS
		00019658-B	TROUGH BOTTOM WELDMENT, 9, RF, 304 SST

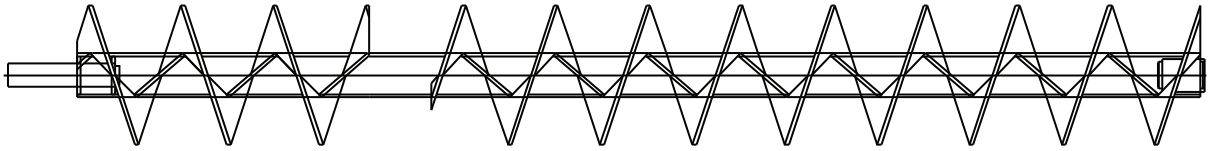
AUGER KITS, 6"

Item	Qty	Part Number	Description
1	1	00021658 00021646 00021635	AUGER WELDMENT, 6", CD-GB/DD AUGER WELDMENT, 6", RF-GB/DD AUGER WELDMENT, 6", OW-GB/DD
2	1	00021746	BUSHING, AUGER, DIRECT DRIVE
3	1	00072550	COUPLER, SHAFT, 1" X 4" SST
4	1	05010699	BOLT, .5-13 X 3.5, G8, HHCS, ZINC
5	1	05020268	NUT, .5-13, G8, HEX, ZINC
6	1	05021367	WASHER, .5, LOCK, ZINC

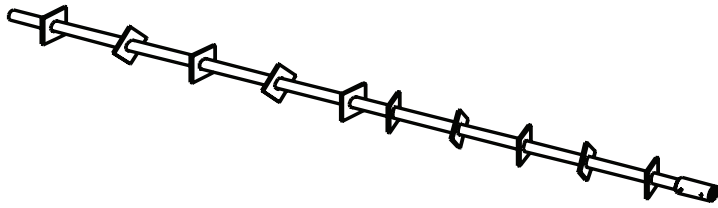
00019607 AUGER WELDMENT, RTS-9-DD



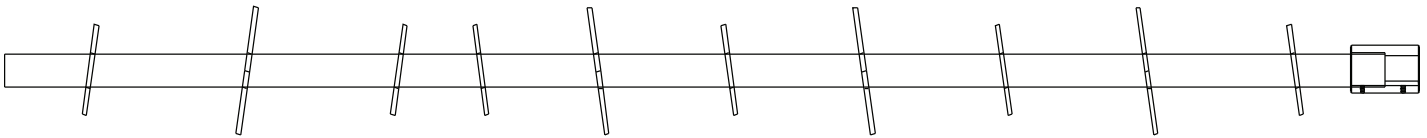
00019659 AUGER WELDMENT, RTS-9-RF



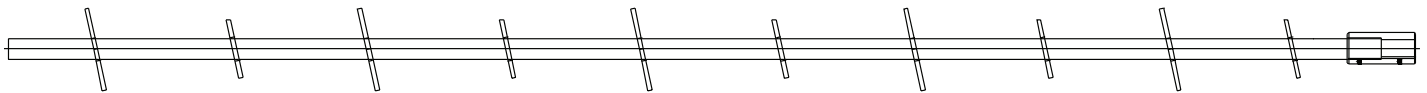
00086594 AGITATOR WELDMENT, RTS-CD, 6" AUGER



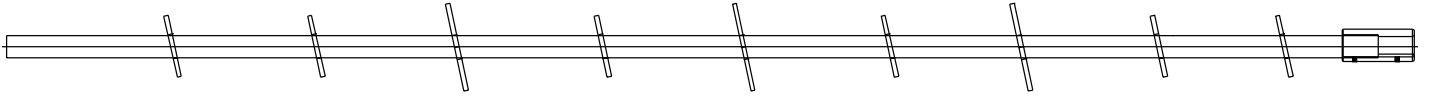
00086570 AGITATOR WELDMENT, RTS-RF, 6" AUGER



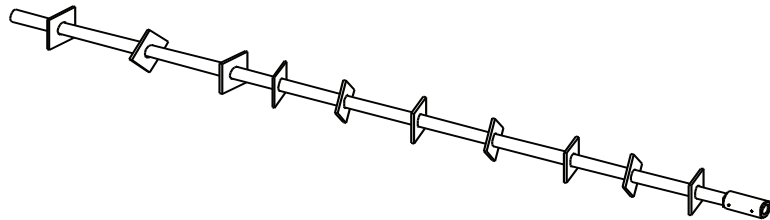
00089223 AGITATOR WELDMENT, RTS-OW, 6" AUGER



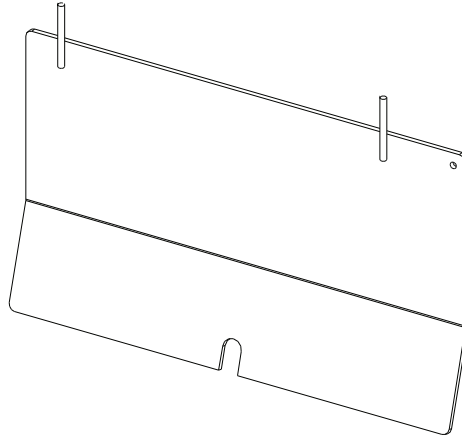
00019650 AGITATOR WELDMENT, RTS-DD, 9" AUGER



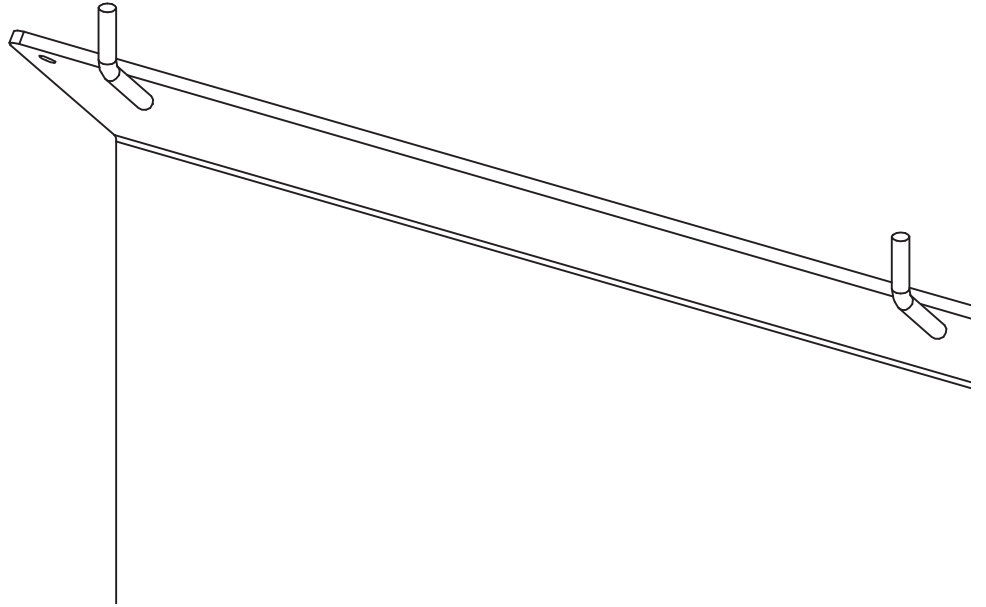
00019660 AGITATOR WELDMENT, RTS-RF, 9" AUGER

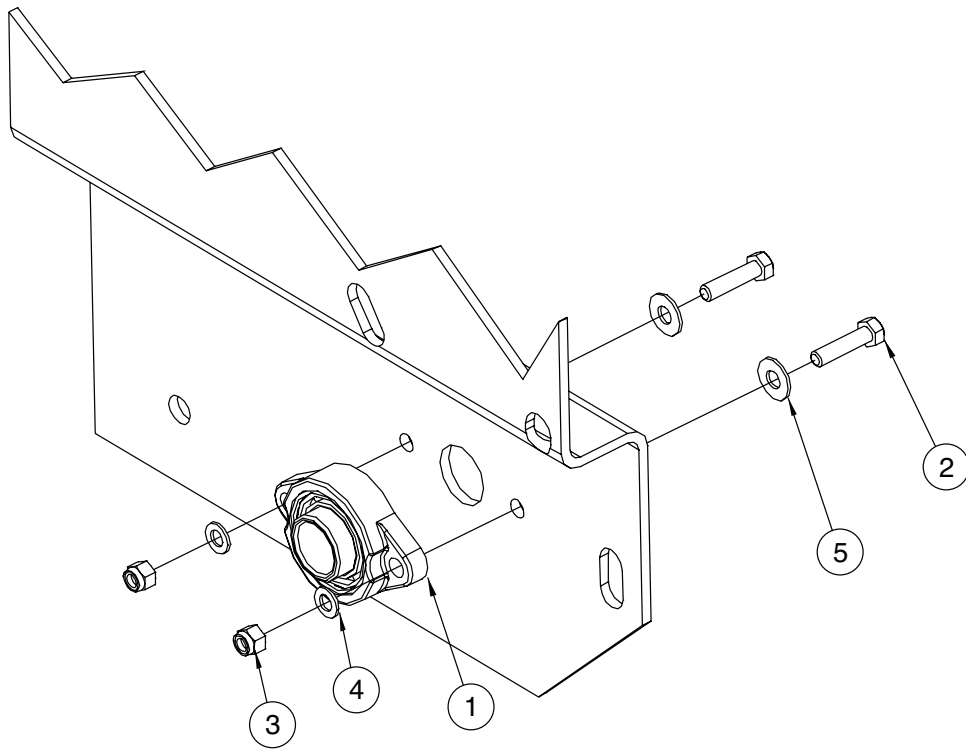


00041644-A ANTI-FLOW PLATE WELDMENT, 6" AUGER, MS
00041644-B ANTI-FLOW PLATE WELDMENT, 6" AUGER, 304 SST



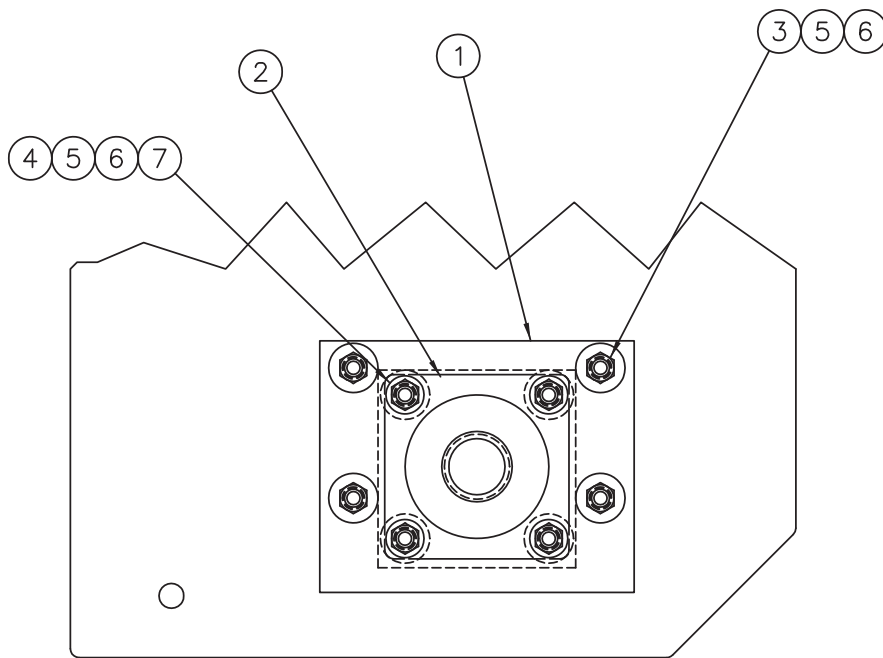
00022767-A ANTI-FLOW PLATE WELDMENT, 9" AUGER, MS
00022767-B ANTI-FLOW PLATE WELDMENT, 9" AUGER, 304 SST





00021724 BEARING KIT, 1.25, 2-BOLT

Item	Qty	Part Number	Description
1	1	05030024	BEARING, S1037.20, 1.25" 2-BOLT
2	2	05010645 05016162	BOLT, .375-16 X 1.5, G8, HHCS, ZINC BOLT, .375-16 X 1.5, HHCS, SST
3	2	05020898 05020891	NUT, .375-16, GC, TOP LOCK, C&W NUT, .375-16, NYLON LOCK, 316 SST
4	2	05021013 05021390	WASHER, .375, FLAT, MIL-CARB, SAE WASHER, .375, FLAT, SAE, SST
5	2	05021307 05021418	WASHER, .375, FLAT, ZINC WASHER, .375, FLAT, SST



00022783 BEARING KIT, 4-HOLE, 1.5" (USED ON 9" AUGER RTS)

Item	Qty	Part Number	Description
1	1	00041098-A 00041098-B 00041098-C	ADAPTER PLATE, IDLER, MS ADAPTER PLATE, IDLER, 304 SST ADAPTER PLATE, IDLER, AUSST
2	1	05030007	BEARING, 1.5" ID, 4-BOLT, FLANGE
3	4	05017108 05017107	BOLT, .5-13 X 1.375, G8, HHCS, ZINC BOLT, .5-13 X 1.375, HHCS, SST
4	4	05010692 05016204	BOLT, .5-13 X 1.750, G8, HHCS, ZINC BOLT, .5-13 X 1.750, HHCS, SST
5	8	05020847 05020908	NUT, .5-13, GC, TOP LOCK, C&W NUT, .5-13, NYLON LOCK, 316 SST
6	12	05021309 05021391	WASHER, .5, FLAT, ZINC WASHER, .5, FLAT, SST
7	4	05021005 05021450	WASHER, .5, FLAT, MIL-CARB, SAE, ZINC WASHER, .5, FLAT, SAE, SST

00086589 DRIVE KIT, RTS-6, DIRECT

Item	Qty	Part Number	Description
1	2	00041086-A 00041086-B 00041086-C	ADAPTER PLATE, AUGER, 6, DD, MS ADAPTER PLATE, AUGER, 6, DD, 304 SST ADAPTER PLATE, AUGER, 6, DD, AUSST
2	2	05006556	MOTOR, HYD, WHITE, 24CID, 1" SHAFT
3	8	05010642 05016050	BOLT, .375-16 X .875, G8, HHCS, ZINC BOLT, .375-16 X .875, HHCS, SST
4	8	05017108 05017107	BOLT, .5-13 X 1.375, G8, HHCS, ZINC BOLT, .5-13 X 1.375, HHCS, SST
5	8	05020847 05020908	NUT, .5-13, GC, TOP LOCK, C&W NUT, .5-13, NYLON LOCK, SST
6	8	05021365 05021392	WASHER, .375, LOCK, ZINC WASHER, .375, LOCK, SST
7	16	05021309 05021391	WASHER, .5, FLAT, ZINC WAHSER, .5, FLAT, SST

HARDWARE FOR ATTACHING ADAPTER PLATE FOR AUGER & AGITATOR

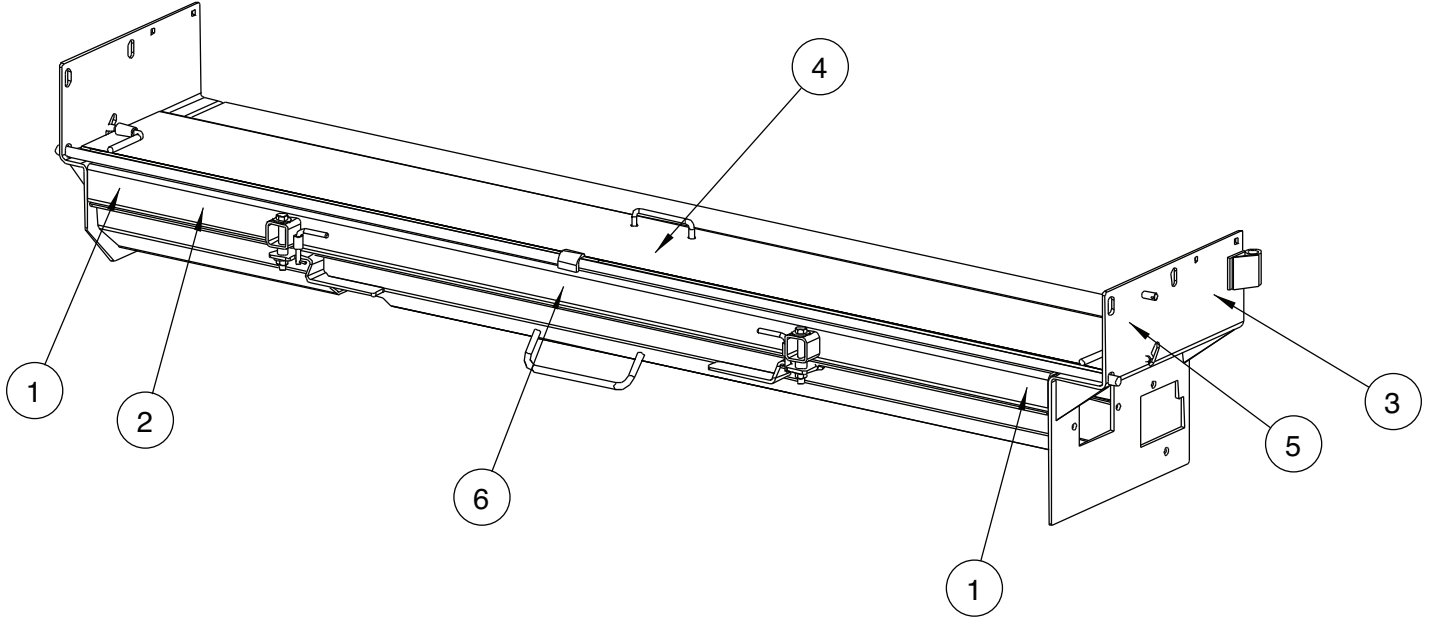
- 4-BOLTS 05017108/05017107
- 4-NUTS 05020847/05020908
- 8-WASHERS 05021309/05021391

HARDWARE FOR ATTACHING MOTOR05006556 FOR AUGER & AGITATOR

- 4-BOLTS 05010642/050160500
- 4-WASHERS 05021365/05021392

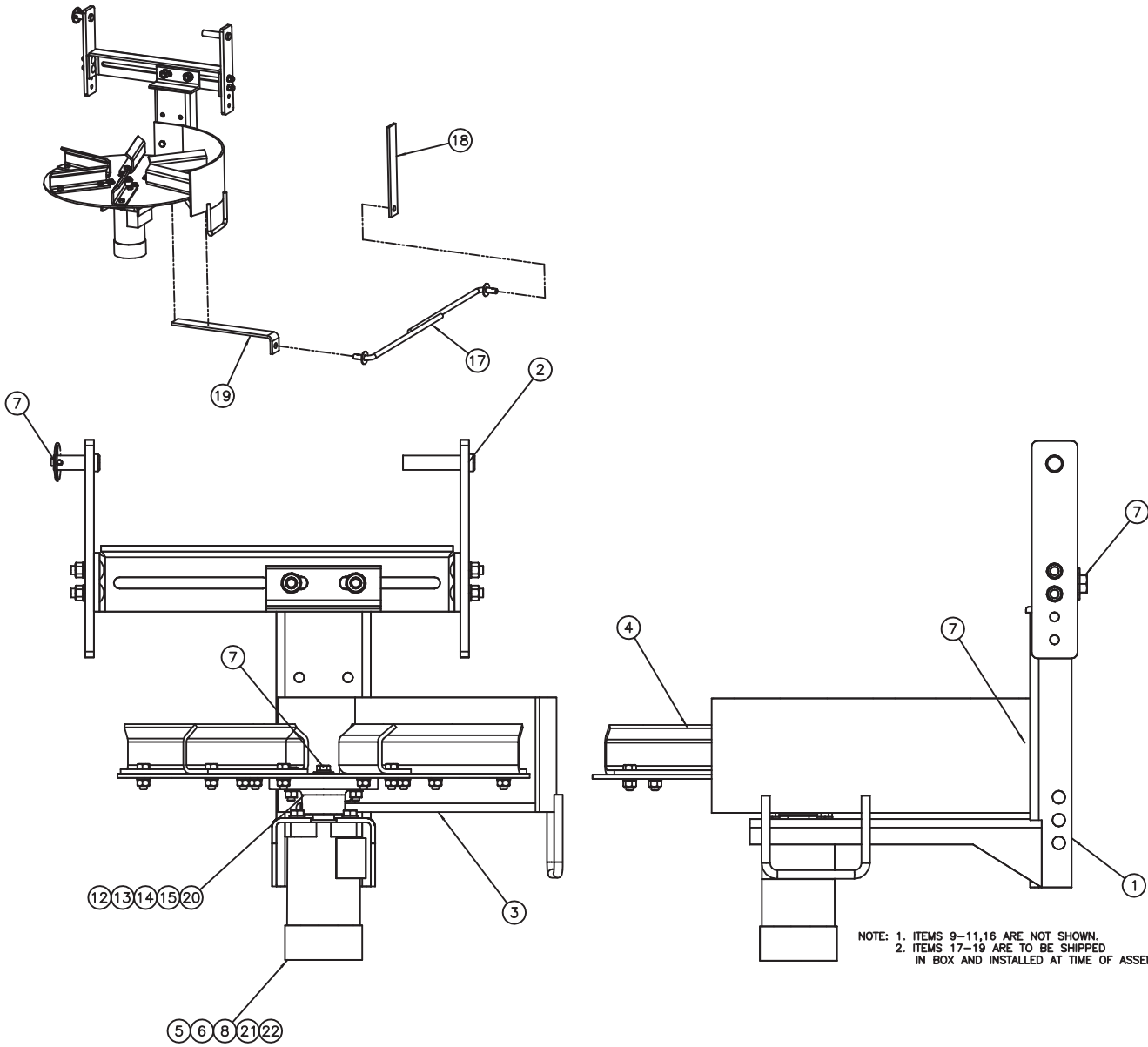
00057875 MOUNTING KIT/RTS

Item	Qty	Part Number	Description
1	2	00041156-A 00041156-B	STABILIZER ROD WELDMENT, MS-UT, MS STABILIZER ROD WELDMENT, MS-UT, 304 SST
2	1	00041121-A 00041121-B	STABILIZER, SPINNER, MS-UT, MS STABILIZER, SPINNER, MS-UT, 304 SST
3	1	00041124-A 00041124-B	BRACKET, STABILIZER, MS-UT, MS BRACKET, STABILIZER, MS-UT, 304 SST
4	3	05022106	PIN, .188, LYNCH



00058134 DECAL KIT,TGT SPREADER,GB/DD			
Item	Qty.	Part Number	Description
1	2	05051401	DECAL,DANGER:TURNING AUGERS...
2	1	05051402	DECAL,DANGER:TURNING SPINNERS.
3	1	05051404	DECAL,CAUTION #1-#6
4	1	05051625	DECAL,MONROE SNOW & ICE CONTROL
5	1	05052311	DECAL,QUALITY CHECK
6	1	05051405	DECAL,21.0x2.5,MONROE SPREADER

00026544 SPINNER ASSEMBLY, LH

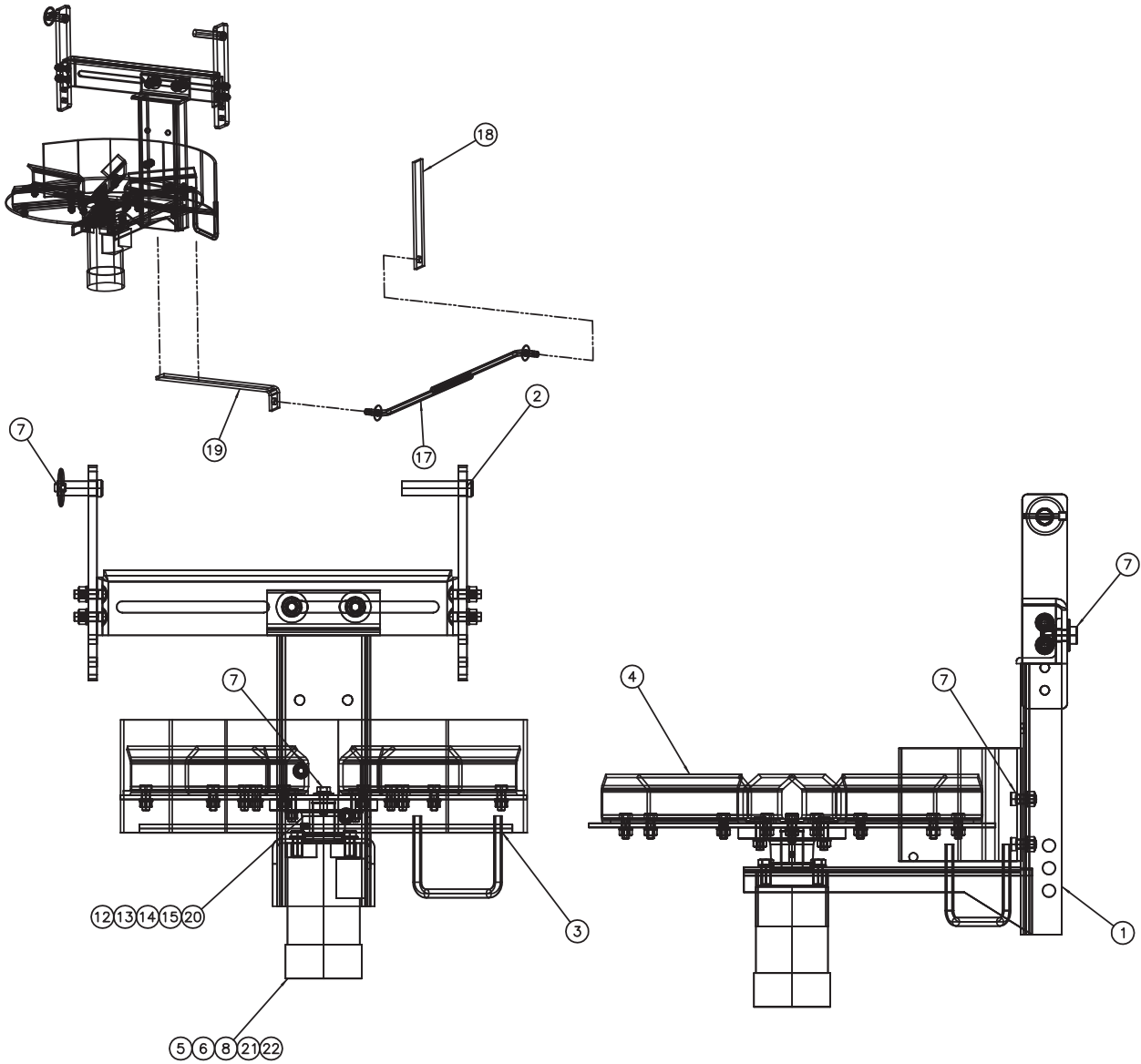


NOTE: 1. ITEMS 9-11,16 ARE NOT SHOWN.
 2. ITEMS 17-19 ARE TO BE SHIPPED IN BOX AND INSTALLED AT TIME OF ASSEMBLY.

00026544 SPINNER ASSEMBLY, TGT, LH SEAL SAVER

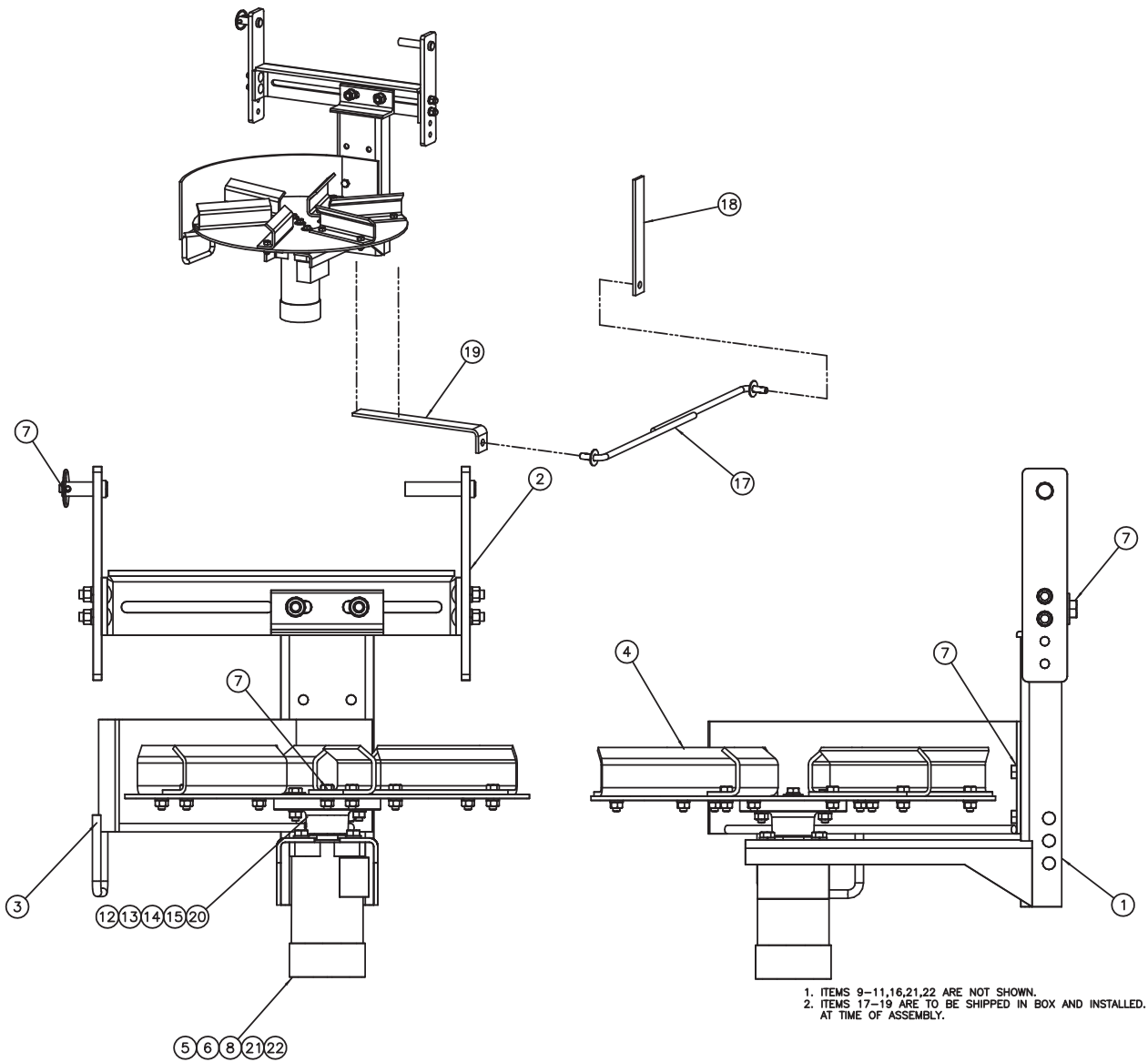
Item	Qty.	Part Number	Description
1	1	00026543-A	FRAME WLDMT,SPINNER,TGT,MS
1	1	00026543-B	FRAME WLDMT,SPINNER,TGT,304SS
1	1	00026543-C	FRAME WLDMT,SPINNER,TGT,AUSST
2	1	00103663-A	HANGER ASSEMBLY,SPINNER,TGT,MS
2	1	00103663-B	HANGER ASSEMBLY,SPINNER,TGT,AUSST
3	1	00105117-A	SHIELD WLDMT,LH,SPINNER,TGT,MS
3	1	00105117-B	SHIELD WLDMT,LH,SPINNER,TGT,304SS
4	1	00099401-A	SPINNER DISC ASSY,18,CCW,MS <i>See Page 52</i>
4	1	00099401-B	SPINNER DISC ASSY,18,CCW,304
4	1	00099401-D	SPINNER DISC ASSY,18,CCW,AUSST
4	1	05050071-B	DISC,SPINNER,18"CCW,POLY
5	1	05006673	MOTOR,HYD,WHITE,3.2CI,4B,1"EXT <i>See Page 66-67</i>
6	4	05010645	BOLT .375-16 x 1.50 G8 HHCS ZC
6	4	05016162	BOLT .375-16 x 1.50 HHCS SS
7	1	05016906-A	BOLT KIT,SPINNER,MS,MT UNDER
7	1	05016906-B	BOLT KIT,SPINNER,MS,MT UNDER
8	4	05021365	WASHER .375 LOCK ZC
8	4	05021392	WASHER .375 LOCK SS
12	1	05051380	HUB,SPINNER ASSY,STD,SHORT,W/SET SCREW
13	4	05010619	BOLT .313-18 x 1.25 G8 HHCS ZC
13	4	05016139	BOLT .313-18 x 1.25 HHCS SS
13	4	05016140	BOLT .313-18 x 1.50 HHCS SS
14	4	05020265	NUT .313-18 G8 HEX ZC
14	4	05020855	NUT .313-18 HEX SS
15	4	05021364	WASHER .313 LOCK ZC
15	4	05021407	WASHER .313 LOCK SS
16	1	05052485	TRASH LINER,CLEAR 40 x 46
17	2	00041156-A	STABILIZER ROD WLDMT,MS-UT,MS
17	2	00041156-B	STABILIZER ROD WLDMT,MS-UT,304
18	1	00041121-A	STABILIZER,SPINNER,MS-UT,MS
18	1	00041121-B	STABILIZER,SPINNER,MS-UT,304
19	1	00041124-A	BRACKET,STABILIZER,MS-UT,MS
19	1	00041124-B	BRACKET,STABILIZER,MS-UT,304
20	4	05021306	WASHER .313 FLAT ZC
20	4	05021404	WASHER .313 FLAT SS
21	1	00122073	SEAL SAVER,MOTOR,SPINNER
22	1	05050288	GREASE ZERK,.250-28 STRAIGHT

00026548 SPINNER ASSEMBLY, CENTER



00026548 SPINNER ASSEMBLY, TGT, CENTER

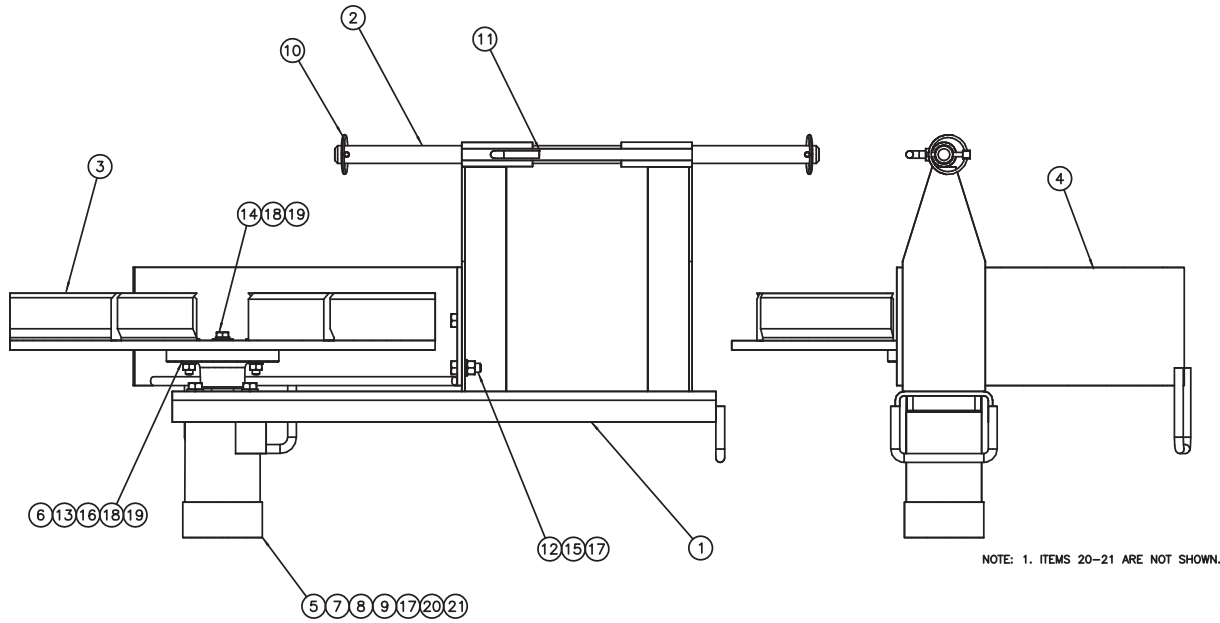
Item	Qty.	Part Number	Description
1	1	00026543-A	FRAME WLDMT,SPINNER,TGT,MS
1	1	00026543-B	FRAME WLDMT,SPINNER,TGT,304SS
1	1	00026543-C	FRAME WLDMT,SPINNER,TGT,AUSST
2	1	00103663-A	HANGER ASSEMBLY,SPINNER,TGT,MS
2	1	00103663-B	HANGER ASSEMBLY,SPINNER,TGT,AUSST
3	1	00105119-A	SHIELD WLDMT,CD,SPINNER,TGT,MS
3	1	00105119-B	SHIELD WLDMT,CD,SPINNER,TGT,304SS
4	1	00099401-A	SPINNER DISC ASSY,18,CCW,MS <i>See Page 52</i>
4	1	00099401-B	SPINNER DISC ASSY,18,CCW,304SS
4	1	00099401-D	SPINNER DISC ASSY,18,CCW,AUSST
4	1	05050071-B	DISC,SPINNER,18"CCW,POLY,
5	1	05006673	MOTOR,HYD,WHITE,3.2CI,4B,1"EXT <i>See Page 66-67</i>
6	4	05010645	BOLT .375-16 x 1.50 HHCS ZC
6	4	05016162	BOLT .375-16 x 1.50 HHCS SS
7	1	05016906-A	BOLT KIT,SPINNER,MS,MT UNDER
7	1	05016906-B	BOLT KIT,SPINNER,MS,MT UNDER
8	4	05021365	WASHER .375 LOCK ZC
8	4	05021392	WASHER .375 LOCK SS
12	1	05051380	HUB,SPINNER ASSY,STD,SHORT,W/SET SCREW
13	4	05010619	BOLT .313-18 x 1.25 G8 HHCS ZC
13	4	05016139	BOLT .313-18 x 1.25 HHCS SS
14	4	05020265	NUT .313-18 G8 HEX ZC
14	4	05020855	NUT .313-18 HEX SS
15	4	05021364	WASHER .313 LOCK ZC
15	4	05021407	WASHER .313 LOCK SS
16	1	05052485	TRASH LINER,CLEAR 40 x 46
17	2	00041156-A	STABILIZER ROD WLDMT,MS-UT,MS
17	2	00041156-B	STABILIZER ROD WLDMT,MS-UT,304
18	1	00041121-A	STABILIZER,SPINNER,MS-UT,MS
18	1	00041121-B	STABILIZER,SPINNER,MS-UT,304
19	1	00041124-A	BRACKET,STABILIZER,MS-UT,MS
19	1	00041124-B	BRACKET,STABILIZER,MS-UT,304
20	4	05021306	WASHER .313 FLAT ZC
20	4	05021404	WASHER .313 FLAT SS
21	1	00122073	SEAL SAVER,MOTOR,SPINNER
22	1	05050288	GREASE FITTING, .250-28 UNF ST



00026549 SPINNER ASSEMBLY, TGT, RH

Item	Qty.	Part Number	Description
1	1	00026543-A	FRAME WLDMT,SPINNER,TGT,MS
1	1	00026543-B	FRAME WLDMT,SPINNER,TGT,304SS
2	1	00103663-A	HANGER ASSEMBLY,SPINNER,TGT,MS
2	1	00103663-B	HANGER ASSEMBLY,SPINNER,TGT,304SS
3	1	00105118-A	SHIELD WLDMT,RH,SPINNER,TGT,MS
3	1	00105118-B	SHIELD WLDMT,RH,SPINNER,TGT,304SS
4	1	00099400-A	SPINNER DISC ASSY,18,CW,MS <i>See Page 53</i>
4	1	00099400-B	SPINNER DISC ASSY,18,CW,304SS
4	1	05051054	DISC,SPINNER,18"CW,POLY,RED <i>See Page 66-67</i>
5	1	05006673	MOTOR,HYD,WHITE,3.2CI,4B,1"EXT
6	4	05010645	BOLT .375-16 x 1.50 G8 HHCS ZC
7	1	05016906-A	BOLT KIT,SPINNER,MS,MT UNDER
7	1	05016906-B	BOLT KIT,SPINNER,MS,MT UNDER
8	4	05021365	WASHER .375 LOCK ZC
8	4	05021392	WASHER .375 LOCK SS
12	1	05051380	HUB,SPINNER ASSY,STD,SHORT,W/SET SCREW
13	4	05010619	BOLT .313-18 x 1.25 G8 HHCS ZC
13	4	05010620	BOLT .313-18 x 1.50 G8 HHCS ZC
13	4	05016139	BOLT .313-18 x 1.25 HHCS SS
13	4	05016140	BOLT .313-18 x 1.50 HHCS SS
14	4	05020265	NUT .313-18 G8 HEX ZC
14	4	05020855	NUT .313-18 HEX SS
15	4	05021364	WASHER .313 LOCK ZC
15	4	05021407	WASHER .313 LOCK SS
16	1	05052485	TRASH LINER,CLEAR 40 x 46
17	2	00041156-A	STABILIZER ROD WLDMT,MS-UT,MS
17	2	00041156-B	STABILIZER ROD WLDMT,MS-UT,304
18	1	00041121-A	STABILIZER,SPINNER,MS-UT,MS
18	1	00041121-B	STABILIZER,SPINNER,MS-UT,304
19	1	00041124-A	BRACKET,STABILIZER,MS-UT,MS
19	1	00041124-B	BRACKET,STABILIZER,MS-UT,304
20	4	05021306	WASHER .313 FLAT ZC
20	4	05021404	WASHER .313 FLAT SS
21	1	00122073	SEAL SAVER,MOTOR,SPINNER
22	1	05050288	GREASE FITTING, .250-28 UNF ST

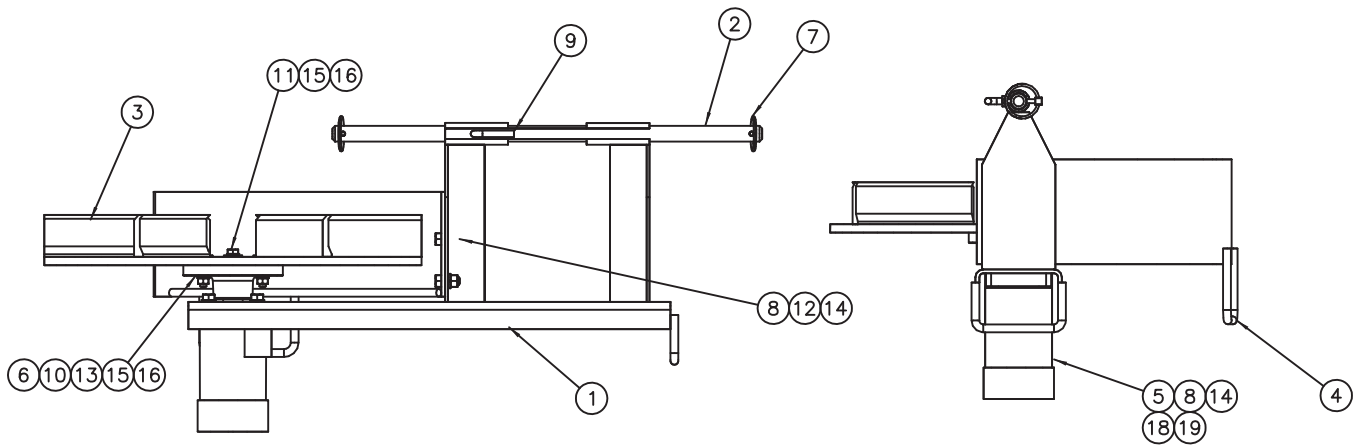
00022064 SPINNER ASSY, SELF-LEVEL, LH



00022064 SPINNER ASSEMBLY, TGT, LH, SELF LEVELING, SEAL SAVER

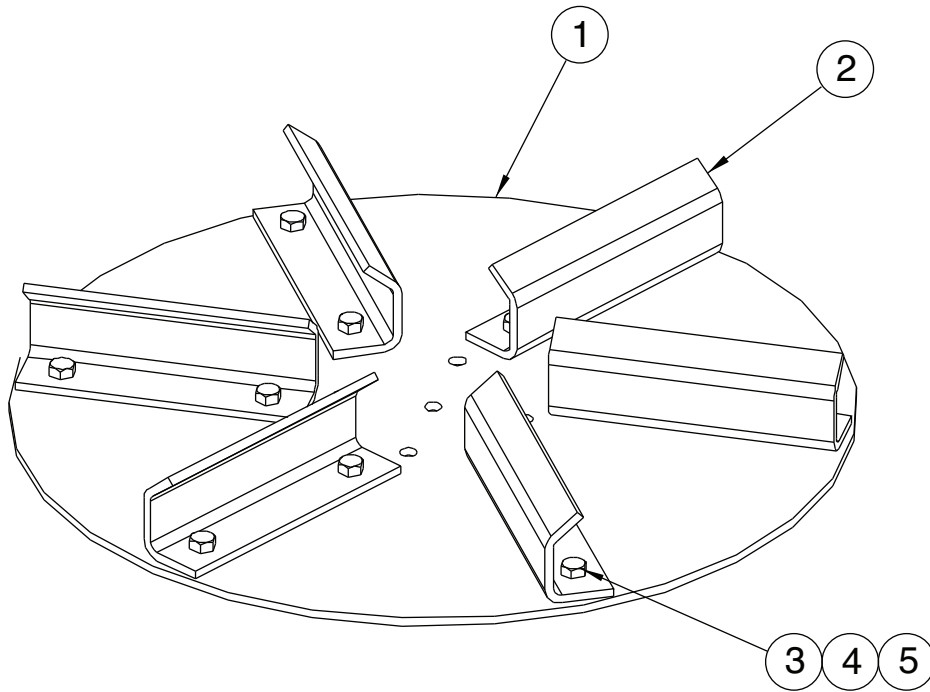
Item	Qty.	Part Number	Description
1	1	00022057-A	FRAME WLDMT,SPNNR,SELF-LVL,MS
1	1	00022057-B	FRAME WLDMT,SPNNR,SELF-LVL,304
1	1	00022057-C	FRAME WLDMT,SPNNR,SELF-LVL,AUSST
2	1	00022039	PIVOT ROD,SPINNER,SELF-LVL,TGT
3	1	00099401-A	SPINNER DISC ASSY,18,CCW,MS
3	1	00099401-B	SPINNER DISC ASSY,18,CCW,304 <i>See Page 52</i>
3	1	00099401-C	SPINNER DISC ASSY,18,CCW,AR
3	1	00099401-D	SPINNER DISC ASSY,18,CCW,AUSST
3	1	05050071-B	SPINNER DISC,18"CCW,POLY
4	1	00105118-A	SHIELD WLDMT,RH,SPINNER,TGT,MS
4	1	00105118-B	SHIELD WLDMT,RH,SPINNER,TGT,304
5	1	05006673	MOTOR,HYD,WHITE,3.2CI,4B,1"EXT <i>See Page 66-67</i>
6	1	05051380	HUB,SPINNER ASSY,STD,SHORT,W/SET SCREWS
7	1	00122073	SEAL SAVER,MOTOR,SPINNER
8	1	05050288	GREASE ZERK,.250-28 STRAIGHT
9	4	05010645	BOLT .375-16 x 1.50 G8 HHCS ZC
9	4	05016162	BOLT .375-16 x 1.50 HHCS SS
10	2	05022106	PIN .188 LYNCH
11	1	05016098	BOLT .313-18 x 1.75 L-SHAPE
12	2	05010642	BOLT .375-16 x .875 G8 HHCS ZC
12	2	05016050	BOLT .375-16 x .875 HHCS SST
13	4	05010619	BOLT .313-18 x 1.25 G8 HHCS ZC
13	4	05016139	BOLT .313-18 x 1.250 HHCS SST
14	1	05010618	BOLT .313-18 x 1.000 G8 HHCS ZC
14	1	05016138	BOLT .313-18 x 1.000 HHCS SST
15	2	05020266	NUT .375-16 G8 HEX ZC
15	2	05020842	NUT .375-16 HEX SST
16	4	05020265	NUT .313-18 G8 HEX ZC
16	4	05020855	NUT .313-18 HEX SST
17	6	05021365	WASHER .375 LOCK ZC
17	6	05021392	WASHER .375 LOCK SST
18	1	05021404	WASHER .313 FLAT SST
18	5	05021306	WASHER .313 FLAT ZC
19	5	05021364	WASHER .313 LOCK ZC
19	5	05021407	WASHER .313 LOCK SST
20	1	05050236	CARDBOARD,BOX,24" x 12" 20"
21	1	05052485	TRASH LINER

00012231 SPINNER ASSY, LH, SELF-LEVEL,SHORT



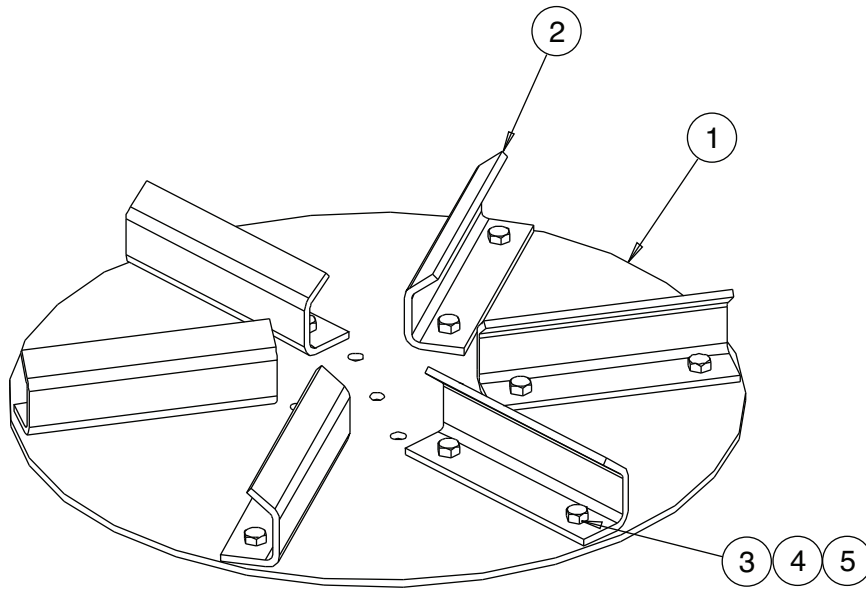
00012231 SPINNER ASSEMBLY, TGT, LH, SELF LEVEL, SHORT

Item	Qty.	Part Number	Description
1	1	00033130-A	FRAME WLDMT,SELF-LVL,SHORT,MS
1	1	00033130-B	PIVOT ROD,SPINNER,SELF-LVL,TGT
2	1	00022039	PIVOT ROD,SPINNER,SELF-LVL,TGT
3	1	00099401-A	SPINNER DISC ASSY,18,CCW,MS <i>See Page 52</i>
3	1	05050071-B	SPINNER DISC,18"POLY,CCW
4	1	00105118-A	SHIELD WLDMT,RH,SPINNER,TGT,MS
4	1	00105118-B	SHIELD WLDMT,RH,SPINNER,TGT,304SS
5	1	05006673	MOTOR,HYD,WHITE,3.2CI,4B,1"EXT <i>See Page 66-67</i>
6	1	05051380	HUB,SPINNER ASSY,STD,SHORT,W/SET SCREW
7	2	05022106	PIN .188 LYNCH
8	6	05010645	BOLT .375-16 x 1.50 G8 HHCS ZC
8	6	05016162	BOLT .375-16 x 1.50 HHCS SST
9	1	05016098	BOLT .313-18 x 1.75 L-SHAPE
10	4	05010619	BOLT .313-18 x 1.25 G8 HHCS ZC
10	4	05010640	BOLT .313-18 x 1.500 HHCS SST
11	1	05010618	BOLT .313-18 x 1.000 G8 HHCS ZC
11	1	05010643	BOLT .375-16 x 1.00 G8 HHCS ZC
11	1	05016034	BOLT .375-16 x 1.00 HHCS SST
12	2	05020266	NUT .375-16 G8 HEX ZC
12	2	05020842	NUT .375-16 HEX SST
13	4	05020265	NUT .313-18 G8 HSX ZC
13	4	05020855	NUT .313-18 HEX SST
14	6	05021365	WASHER .375 LOCK ZC
14	6	05021392	WASHER .375 LOCK SST
15	5	05021364	WASHER .313 LOCK ZC
15	5	05021407	WASHER .313 LOCK SST
16	1	05021306	WASHER .313 FLAT ZC
16	5	05021404	WASHER .313 FLAT SST
18	1	00122073	SEAL SAVER,MOTOR,SPINNER
19	1	05050288	GREASE ZERK,.250-28 STRAIGHT



00099401-A DISC ASSEMBLY, SPINNER, 18" CCW, MS
00099401-B DISC ASSEMBLY, SPINNER, 18" CCW, 304 SST
00099401-C DISC ASSEMBLY, SPIPNNER, 18" CCW, AR

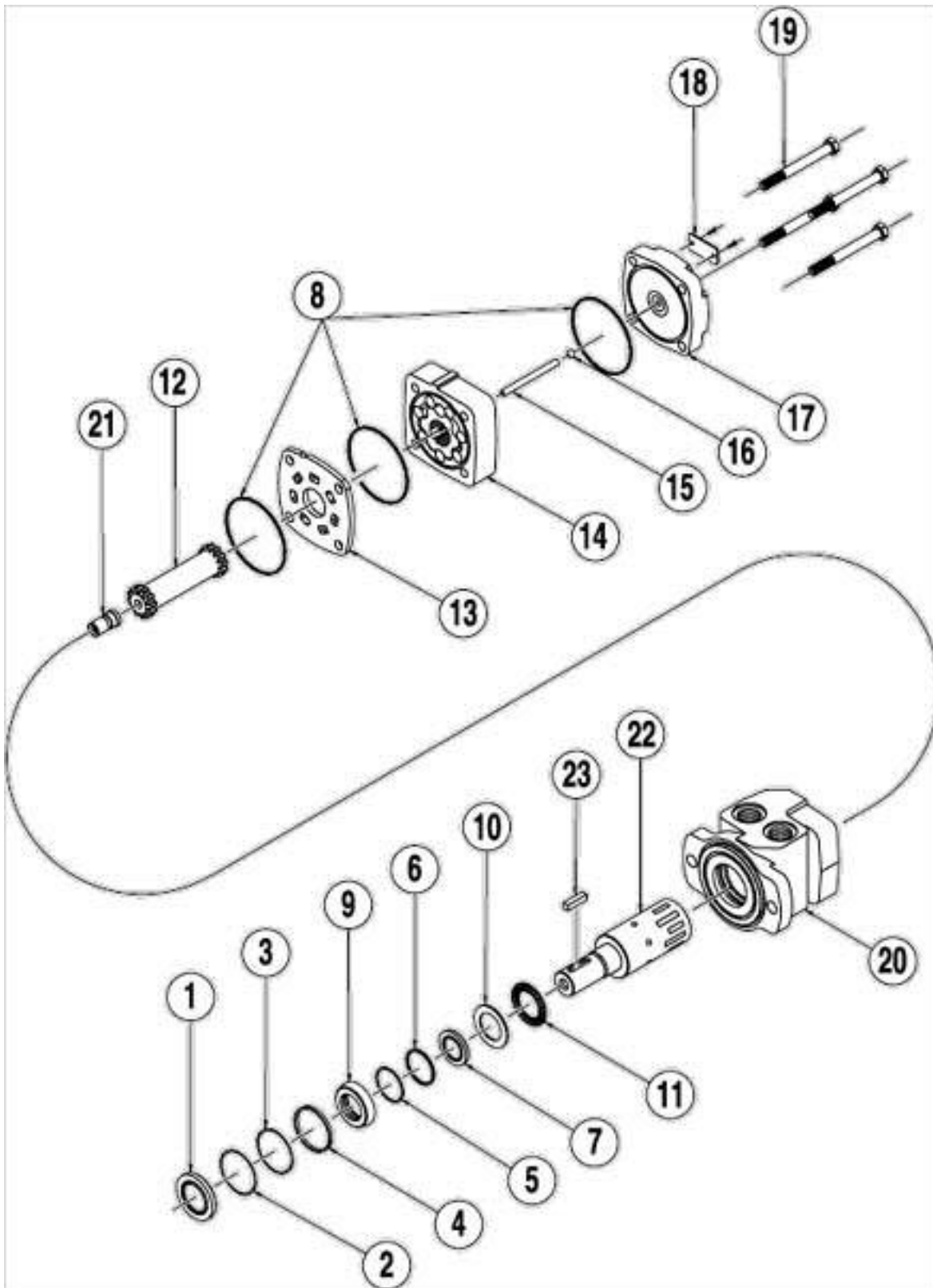
Item	Qty	Part Number	Description
1	1	00080420-A 00080420-B 00080420-D	DISC, SPINNER, 18" MS DISC, SPINNER, 18", 304 DISC SPINNER, 18", AR
2	6	00080425-A 00080425-B	FLITE SPINNER, MS FLITE SPINNER, SST
3	12	05010617 05016137	BOLT, .312-18 X .875, G8, HHCS, ZINC BOLT, .312-18 X .875, HHCS, SST
4	12	05020265 05020855	NUT, .312-18, G8, HEX, ZINC NUT, .312-18, G8, HEX, SST
5	12	05021364 05021407	WASHER, .312, LOCK, ZINC WASHER, .312, LOCK, SST



00099400-A DISC ASSEMBLY, SPINNER, 18" CW, MS
00099400-B DISC ASSEMBLY, SPINNER, 18" CW, 304 SST
00099400-C DISC ASSEMBLY, SPIPNNER, 18" CW, AR

Item	Qty	Part Number	Description
1	1	00080420-A 00080420-B 00080420-D	DISC, SPINNER, 18" MS DISC, SPINNER, 18", 304 DISC SPINNER, 18", AR
2	6	00080425-A 00080425-B	FLITE SPINNER, MS FLITE SPINNER, SST
3	12	05010617 05016137	BOLT, .312-18 X .875, G8, HHCS, ZINC BOLT, .312-18 X .875, HHCS, SST
4	12	05020265 05020855	NUT, .312-18, G8, HEX, ZINC NUT, .312-18, G8, HEX, SST
5	12	05021364 05021407	WASHER, .312, LOCK, ZINC WASHER, .312, LOCK, SST

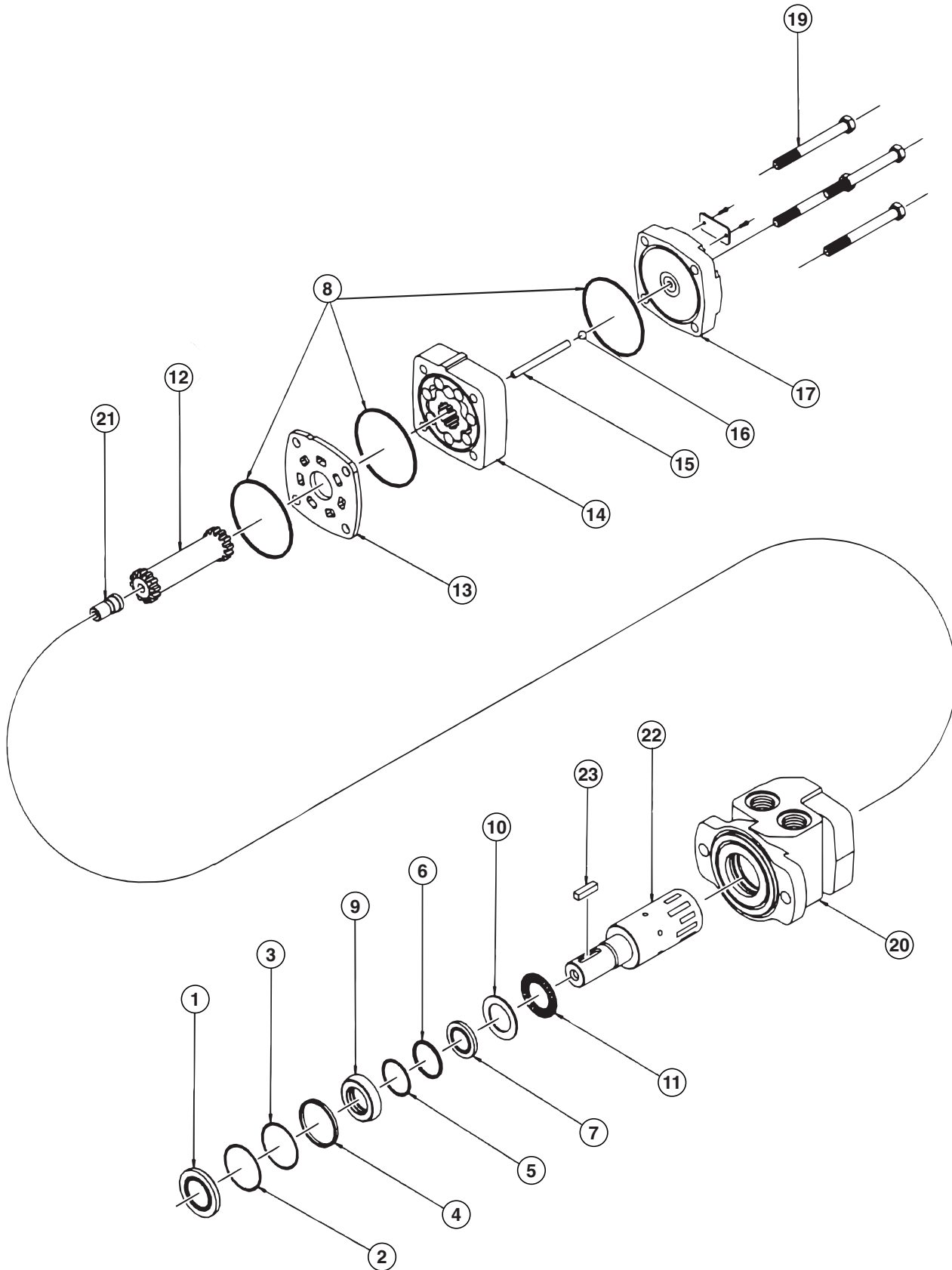
05006556 MOTOR, HYDRAULIC, WHITE, 24 CI, 4 BOLT



05006556 MOTOR ASSEMBLY PARTS LIST

Item	Part Number	Description
1	Seal Kit	Dust Seal
2		Split Wire Ring
3		Metal Backup Shim
4		High Pressure Seal
5		Metal Backup Shim
6		Teflon Backup Shim
7		Shaft Seal
8		Body Seals (3)
9		Seal Carrier
10		Thrust Washer
11	05006357	Thrust Bearing
12	05006366	Drive Link Kit
13	05006359	Wear Plate
14	05006365	Rotor Kit
15	05006367	Drive Link Pin Kit
16	---	Included in item #15 Drive Link Pin Kit
17	05006360	End Cover
18	---	Serial Number Plate
19	05006368	Bolt Set Kit
20	05006564	Housing Kit, 2-Hole, w/ 7/8" O-Ring
21	05006358	Cooling Plug
22	05006370	Shaft Kit, 1" Straight Speed Sensor
23	05006371	Key Kit, 1" Straight Speed Sensor

05006673 MOTOR, HYD, WHITE, 3.2CI, 4B, 1" EXT SHAFT, .875" ORB/SEAL SAVER



MOTOR ASSEMBLY PARTS LIST

Item	Part Number	Description
1	Seal Kit 05006679	Dust Seal
2		Split Wire Ring
3		Metal Backup Shim
4		High Pressure Seal
5		Metal Backup Shim
6		Teflon Backup Shim
7		Shaft Seal
8		Body Seals (3)
9		Seal Carrier
10		Thrust Washer
11	---	Thrust Bearing
12	---	Drive Link Kit
13	---	Wear Plate
14	---	Rotor Kit
15	---	Drive Link Pin Kit
16	---	Included in item #15 Drive Link Pin Kit
17	---	End Cover
18	---	Serial Number Plate
19	---	Bolt Set Kit
20	05006564	Housing Kit, 4-Hole, w/ 7/8" O-Ring
21	---	Cooling Plug
22	05006410	Shaft Kit 1" Straight Speed Sensor
23	---	Key Kit, 1" Straight

HOW TO ORDER PARTS

To order or inquire about replacement parts, please contact the distributor or store that the product was purchased through. To speed the information flow, please have the follow information ready:

- Model Number
- Serial Number
- Part Number and/or description as per the parts manual
- Quantity needed

For further information about **Monroe Truck Equipment** replacement parts, please call 800-880-0109 and ask for **Snow & Ice Parts Sales**.

RETURN POLICY

Merchandise returned to **Monroe Truck Equipment** must have a Warranty Service Request (WSR) form filled out completely and signed by authorized personnel. To get your WSR form, call 800-880-0109. For whole goods, ask for **Snow & Ice Sales**. For replacement parts, ask for **Snow & Ice Parts Sales**. All returned items are subject to a 15% restocking fee and must be sent freight prepaid!

MONROE TRUCK EQUIPMENT, INC. WARRANTY SNOW & ICE CONTROL PRODUCTS

Monroe Truck Equipment, Inc. warrants to the original purchaser, that if any part of the product proves to be defective in workmanship or material within **ONE YEAR** of the original installation, and is returned to us within 30 days of the discovered defect, we will (at our option) repair or replace the defective part. This warranty does not apply to damage resulting from misuse, neglect, accident, improper installation, normal wear items or lack of maintenance. This warranty is exclusive and supersedes all other warranties, whether expressed or implied. **Monroe Truck Equipment, Inc.** neither assumes, nor authorizes anyone to assume for it, any other obligation or liability in connection with this warranty and will not be liable for consequential damages.

All engines, pumps, motors, cylinders and valves are warranted by their manufacturer and not by **Monroe Truck Equipment, Inc.**. The manufacturer's warranty will apply to these parts. Electrical and hydraulic components are not to be disassembled without the express written permission of Monroe Truck Equipment. Use of replacement parts other than original equipment voids this warranty.

All defective parts returned must be accompanied by the model number, serial number, date installed, date of defect, description of defect, and the name of the distributor from whom it was purchased. All warranty claims must have prior written approval from **Monroe Truck Equipment, Inc.**

Please return the warranty registration card that accompanies this manual to confirm receipt of this parts catalog and acknowledge the information contained within. Failure to return the attached card may result in a voided warranty.



1051 West 7th Street
Monroe, WI 53566
608-328-8127 ~ Fax: 608-328-4278

Warranty Policy

Uninstalled Parts and Equipment Provided by Monroe Truck Equipment

Monroe Truck Equipment will provide the following limited warranty for a period of one year to the original purchaser of all uninstalled goods provided by Monroe Truck Equipment:

LIMITED WARRANTY: All goods provided by Monroe Truck Equipment (MTE) will be free from defects in material and workmanship for a period of one year from the date of purchase by the original purchaser. This limited warranty shall be the sole and exclusive remedy for any such product found to be defective. This limited warranty supercedes all previous warranties and is exclusive and in lieu of all other warranties, whether expressed or implied.

This limited warranty applies only to parts or accessories manufactured by MTE and/or provided by same. Except with respect to title, this limited warranty does not pertain to parts or accessories not manufactured and/or provided by MTE, regardless of whether such parts or accessories were selected and/or recommended by MTE. MTE will, as a service to the buyer, pass on any warranties received from the original manufacturer of MTE provided parts and/or accessories.

MTE will not under any circumstances be liable for any incidental or consequential damages whether in tort, contract, or otherwise, for any bodily injury, death, property damage, loss of use, or loss of income resulting from or in any way arising out of any goods provided by MTE, or their sale, use, or manufacture.

Any warranty claim deemed to be arising from the result of misuse, abuse, neglect, accident, improper installation, lack of maintenance, act of war (whether declared or otherwise), or act of God will be denied. Any repair or modification by the buyer or any third party, without the prior written consent of MTE, will void any possible warranty compensation. Any damage deemed to be the result of abnormal operation will not be compensated by this warranty.

Normal or special maintenance items such as fuels, fluids, tires, belts, hoses, filters, air cleaners, light bulbs, and any other items subject to normal wear and tear that are supplied in connection with goods provided by MTE are not allowed under this warranty.

All engines, pumps, cylinders, valves, and motors are warranted by their manufacturer and not by Monroe Truck Equipment. The manufacturer's warranty will apply to these parts. Electrical and hydraulic components are not to be disassembled without the express written consent of MTE. Any disassembly of MTE provided components without prior authorization will void the applicable warranty.

Monroe Truck Equipment shall be the sole and final determining authority as it applies to the administration of this warranty policy. Purchaser acknowledges receipt of Monroe Truck Equipment Warranty Policy and agrees to be bound by same.



GLOBAL SOLUTIONS
ARMORED VEHICLES ~ SPORT TRUCK CONVERSIONS
MUNICIPAL SNOW & ICE CONTROL ~ FIRE APPARATUS
PICKUP TRUCK ACCESSORIES ~ TRUCK EQUIPMENT/MODIFICATIONS





1051 West 7th Street
Monroe, WI 53566
608-328-8127 ~ Fax: 608-328-4278

Any and all warranty claims must be forwarded to MTE within 10 days of defect discovery. A copy of the original Monroe Truck Equipment invoice as well as the manufacturer's model number, serial number, and date of installation must accompany all correspondence regarding said claims. MTE will, at their option, choose whether to repair or replace the defective part unless otherwise specified by the original manufacturer of said part.

Procedures for Warranty Claims Notification

For submission of any warranty claim please contact Monroe Truck Equipment – Warranty Department at 800-356-8134

The following documentation will be needed when you call for initial warranty authorization:

1. A copy of the original MTE invoice.
2. Make, Model, and VIN or Serial Number of the equipment involved.
3. Part number and serial number of the part in question.
4. A complete description of the problem.

The following must accompany any claim submitted to Monroe Truck Equipment:

1. Documented photographs of any physical damage.
2. Inspection notes by MTE personnel or MTE authorized 3rd party.
3. Authorization number issued by Monroe Truck Equipment – Warranty Department.

Defective parts must be returned to Monroe Truck Equipment (freight prepaid) within 30 days of issuance of Authorization Number.

Monroe Truck Equipment reserves the right to void any warranty for failure to comply with Monroe Truck Equipment Warranty Policy.

This policy is effective October 11, 2012

