



RT Spreader 1-Ton

Service and Parts Manual



Monroe Snow & Ice Control

A Division of Monroe Truck Equipment

1051 W. 7th Street

Monroe, WI 53566

Phone: 608-328-8127

Fax: 608-329-8488

**05051718
11/14/2012**



TABLE OF CONTENTS

Safety Instructions	2
Maintenance Instructions	3
General Information	4
MTE RTS Installation Instructions	5
Spinner Installation Instructions	6-7
Centerline Chute Installation Instructions	8-9
Hydraulic Schematic	10-11
Operating Instructions	13
Replacement Parts	14-42
How to Order Parts	43
Return Policy	43
Warranty Registration	44-46

SAFETY INSTRUCTIONS

- Read all installation, safety and maintenance instructions completely before operating this equipment
- Keep all personnel clear of moving parts while equipment is being operated.
- Do not operate equipment in need of maintenance! Repair immediately!
- While operating this equipment, use common sense, use caution, be alert and be safety-conscious.

GENERAL INFORMATION

- Location descriptions are noted in direction of travel. (i.e. front, rear, left and right.)
- Delivery of replacement parts is subject to our sales delivery terms.
- Use only **Monroe Truck Equipment** O.E.M. replacement parts. Failure to do so will void warranty.
- Replacement parts listed in this manual reflect our most common items. If you do not find the part you require, please call your distributor.
- **Monroe Truck Equipment** reserves the right to make revisions or alterations to this parts manual without notice.

MAINTENANCE INSTRUCTIONS




In Season:

- Check for loose bolts and nuts daily, and re-torque before use. (Failure to inspect equipment on a daily basis may seriously affect safety and/or efficiency.)
- Lubricate all grease fittings every ten hours of normal use and more frequently under heavy use.
- A cross over relief valve (1800 PSI) **MUST** be plumbed into the reversing circuit.
- Check all hydraulic fittings for tightness on a regular basis.
- System pressure should **NOT** exceed 2000 PSI.
- Check cutting edge for wear. Do not let cutting edge wear closer than $\frac{1}{2}$ " to $\frac{3}{8}$ " from the bottom angle of the moldboard.
- Due to the nature of use and environment this plow is operating in, damage and wear may occur at any time. Therefore, **Monroe Truck Equipment** recommends the end user establish and follow a daily inspection routine before using this plow.

Off Season:

- Use care when disconnecting hydraulic lines to assure that no dirt or foreign objects enter the hydraulic system. Use caps to cover hydraulic hose fittings and insert plugs in hydraulic ports.
- Hydraulic cylinders should be fully retracted when stored during the off season to prevent damage or corrosion. The remaining exposed shaft surface should be coated with a thick grease to prevent corrosion, which must be removed before returning to regular service.
- Check mounting bolts for wear and/or damaged threads and replace before next season.

TORQUE CHART

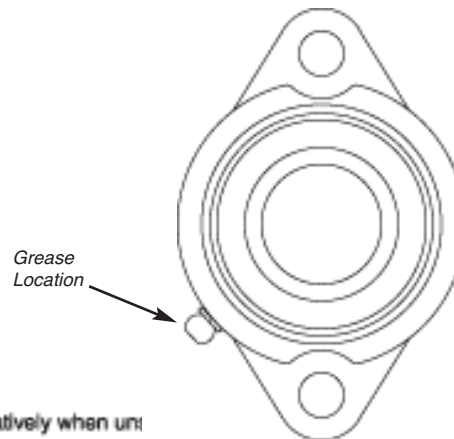
SIZE	 GRADE 2	 GRADE 5	 GRADE 8
1/4-20	50 IN-LBS	75 IN-LBS	9 FT-LBS
3/8-16	15 FT-LBS	23 FT-LBS	35 FT-LBS
1/2-13	35 FT-LBS	55 FT-LBS	80 FT-LBS
5/8-11	75 FT-LBS	110 FT-LBS	170 FT-LBS
3/4-10	130 FT-LBS	200 FT-LBS	280 FT-LBS
1-8	190 FT-LBS	480 FT-LBS	680 FT-LBS
1 1/4-7	380 FT-LBS	840 FT-LBS	1360 FT-LBS

BEARING LUBRICATION CHART

LUBRICATION

All bearing units are factory prelubricated and, therefore, do not require supplemental grease before service life begins. Relubrication, when administered correctly, can increase the life of a bearing substantially. We recommend the following general guidelines to maximize your bearing life:

RPM	Temperature	Environmental Condition	Interval
100 500 1,000	32°F-120°F 32°F-150°F 32°F-210°F	Clean Clean Clean	6-12 months 2-6 months 2 wks to 2 months
1,500 Any	Over 210°F 32°F-150°F	Clean Dirty	Daily to weekly Weekly to monthly
Any Any	Over 150°F Any Temp.	Dirty Very Dirty	Daily to 2 wks Daily to weekly
Any	Any Temp.	Extremely Dirty	Daily to weekly



NOTE:

Over lubrication is a major cause of bearing failures. Please relubricate conservatively when using bearing requirements.

When selecting a bearing lubricant, your dealer suggest any lithium-based NLGI #2 grease. For operating temperatures higher than 210°F, please consult your dealer.

MTE RTS INSTALLATION INSTRUCTIONS

1. Make sure all components for the replacement tailgate spreader have been received.
2. Support the existing tailgate and remove from the dump body by unlatching the tailgate latch system, unhooking the limit chains and removing the top hinge pins. The hinge pins will be used to install the replacement tailgate spreader. (Store the tailgate for summer use).
3. Remove two bottom tube end caps, two bottom tailgate latch pins and two trough weldment dog legs by grinding the tack welds. Set these parts aside for positioning later.
4. Position two, $\frac{1}{4}$ " x 2" x 2" x 10" long angles, (not provided) on the floor of the dump body. Locate one of these angles approximately 10" in from each side of the dump body and allow them to overhang approximately 2" past the rear of the dump body floor. Tack weld in position. (These angles will be used as guides to make sure the replacement tailgate spreader is square to the dump body. They will be removed after installation is complete).
5. Using a hoist with the proper lifting capacity, position the replacement tailgate spreader at the rear of the dump body and raise it so the top of the bottom tube of the boxed perimeter contacts both angles installed in step 4. (Make sure the entire boxed perimeter of the replacement tailgate spreader is tight against the rear of the dump body.).
6. Repeat step 1-5 for the other dog leg.
7. Insert one of the tailgate latch pins removed in step 3 into the left side of the bottom tube of the boxed perimeter of the replacement tailgate spreader. Position the pin so it engages completely into the receiver of the dump body tailgate latch system. Tack weld in position.
8. Repeat step 8 for the right tailgate latch pin.
9. Remove the two angles installed in step 4.
10. Using the hoist, pivot the replacement tailgate spreader at the hinge point to make sure the replacement tailgate spreader can pivot freely and that it will engage and disengage the dump body tailgate latch system completely.
11. Weld both tailgate latch pins to the tubes 100%. Drill a minimum of three $\frac{3}{8}$ " ID holes through the bottom tube on each end along the shaft of the pins at . Plug weld the tailgate latch pins to the tube through these holes. (This is to prevent the pins from moving inside the tube.). Weld both bushings into the hinge arm 100%.
12. Install both bottom tube end caps removed in step 3 over the pins installed in steps 8 & 9 and flush with the ends of the bottom tube. (The end caps may need to be trimmed to fit around the pins.). Weld the end caps in place. The end caps must be continuously welded to the pins and tube to prevent moisture from entering the bottom tube.
13. Remove the hoist supporting the replacement tailgate spreader. Recheck the fit of the replacement tailgate spreader by raising the dump body to make sure the replacement tailgate spreader will disengage from the dump body tailgate latch system and can pivot freely. Lower the dump body to be sure the bottom pins of the replacement tailgate spreader totally engage into both dump body tailgate latch saddles and that both latches close and lock completely.
14. Install the spinner as described in the spinner section of the installation instructions.
15. Install the hydraulic hoses and/or couplers between the truck hydraulic system and the replacement tailgate spreader hydraulic motors as described in the hydraulics section of the installation instructions. (Note: Hydraulic hoses need to be routed up and around the tailgate hinge so the replacement tailgate spreader can open and close properly. Secure hoses to prevent chaffing and/or damage).

STANDARD SPINNER INSTALLATION INSTRUCTIONS

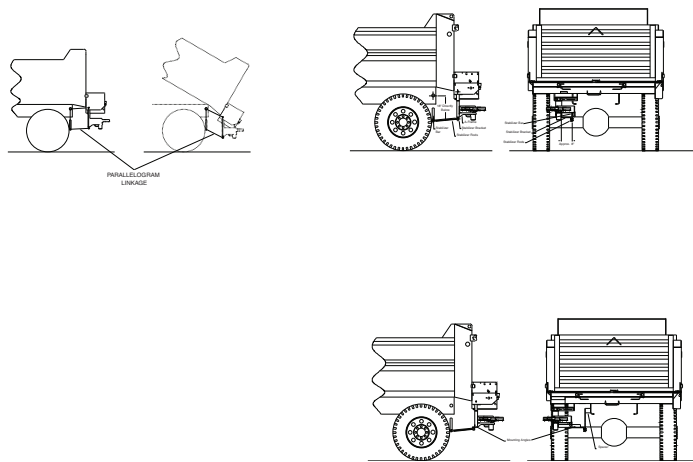
SPINNER ASSEMBLY: The spinner is to be mounted on the spreader through by the discharge opening(s).

1. Bolt the spinner frame to the adjustment angle.
2. Mount the spinner to the trough by inserting the pins on the adjustment angle into the mounting brackets on the trough by the discharge.
3. Secure with the lynch pin.

STABILIZER BAR: (For Non-Self Leveling Spinners Only)

The objective of the stabilizer bar is to create a parallelogram linkage between the dump body hinge pin, stabilizer bar and spinner. This ensures that the spinner disc will stay parallel to the road surface at any dump body angle. (Reference Figure 1)

Figure 1



1. (Reference Figure 2) Position the stabilizer bar on chassis so that the hole is 18” directly below the dump body hinge pin and as close to being in line with the spinner as practical (within approximately 8”). Weld the stabilizer bar in place.

NOTE: (Reference Figure 3) A spacer block (not furnished) can be installed between the chassis frame rail and the stabilizer bar if required to locate the stabilizer bar closer to the spinner for alignment of stabilizer rods.

2. (Reference Figure 2) With the spinner mounted, position the stabilizer bracket on the bottom front of the spinner a-frame. Locate the stabilizer bracket so that the hole is in line with the stabilizer bar installed in step 1. Weld the stabilizer bracket in place.

NOTE: (Reference Figure 3) A mounting angle (not furnished) positioned on the bottom front of the spinner a-frame may be required to extend the stabilizer bracket for proper alignment of the stabilizer bracket hole and the stabilizer bar.

3. (Reference Figure 2) Install one each of the stabilizer rods in the stabilizer bar and the stabilizer bracket. Hold the spinner disc level and weld the rods together. Insert the hair pins through the stabilizer rods.

STANDARD SPINNER INSTALLATION INSTRUCTIONS

Figure 2

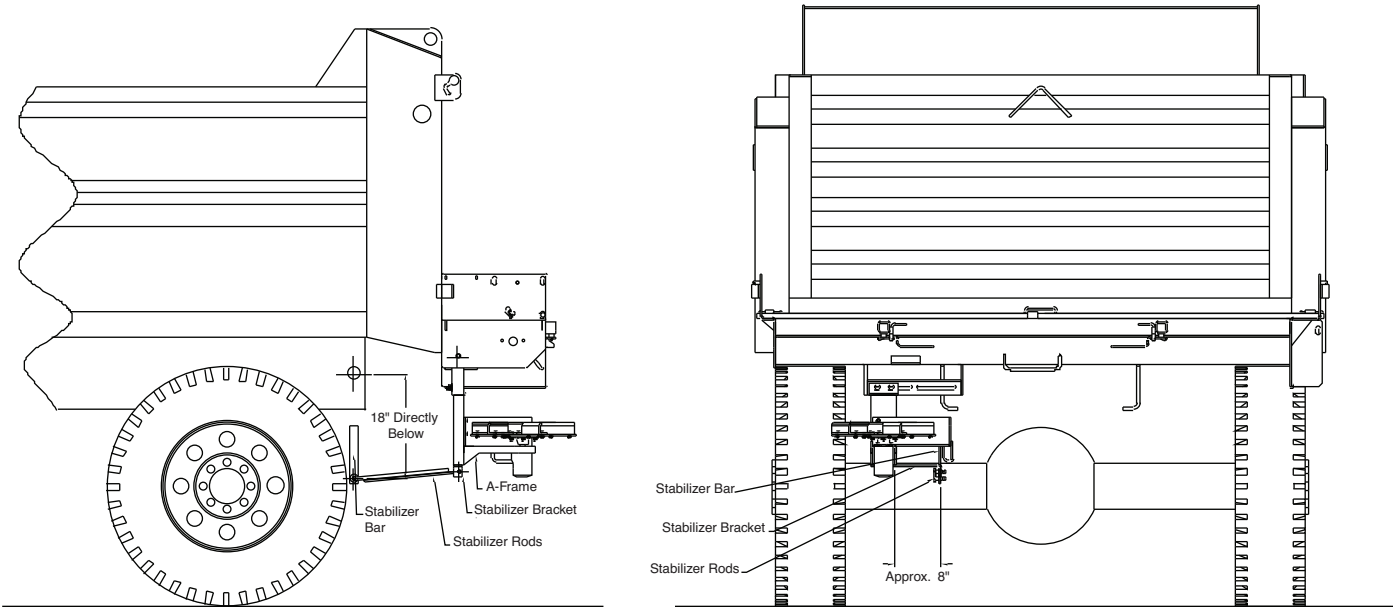
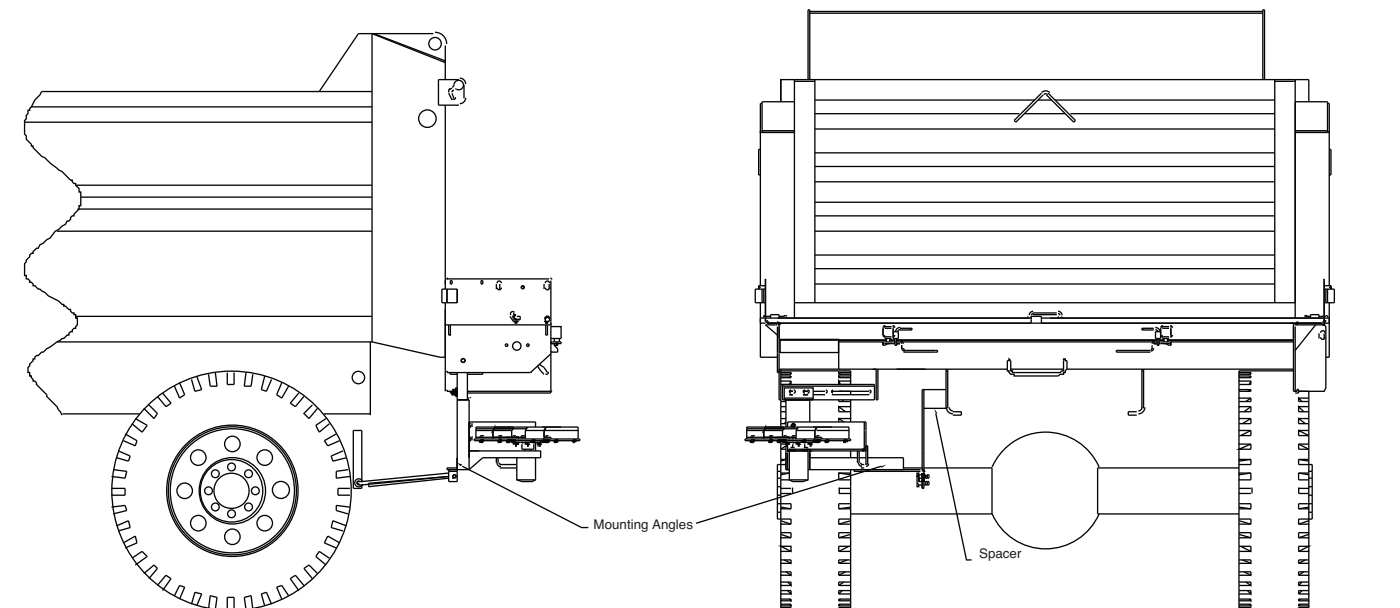


Figure 3



CENTERLINE CHUTE INSTALLATION INSTRUCTIONS

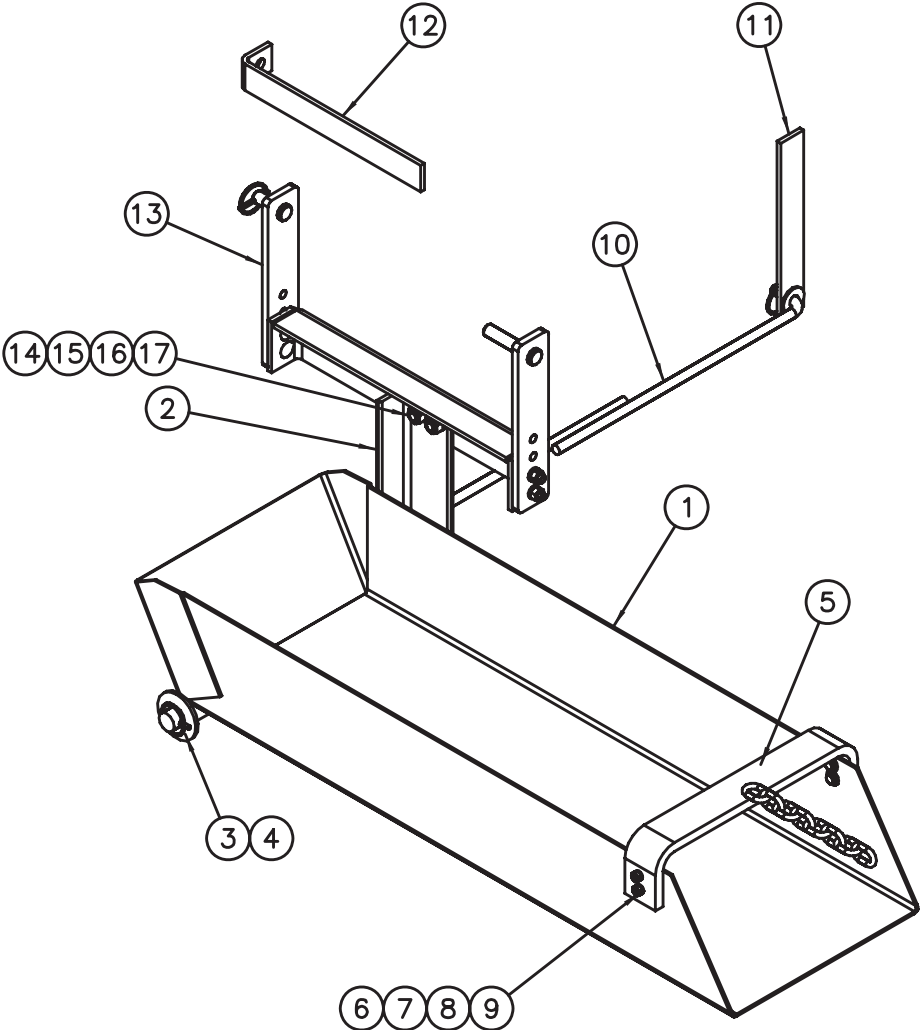
CL CHUTE ASSEMBLY: The centerline chute is to be mounted on the spreader trough by the discharge opening(s).

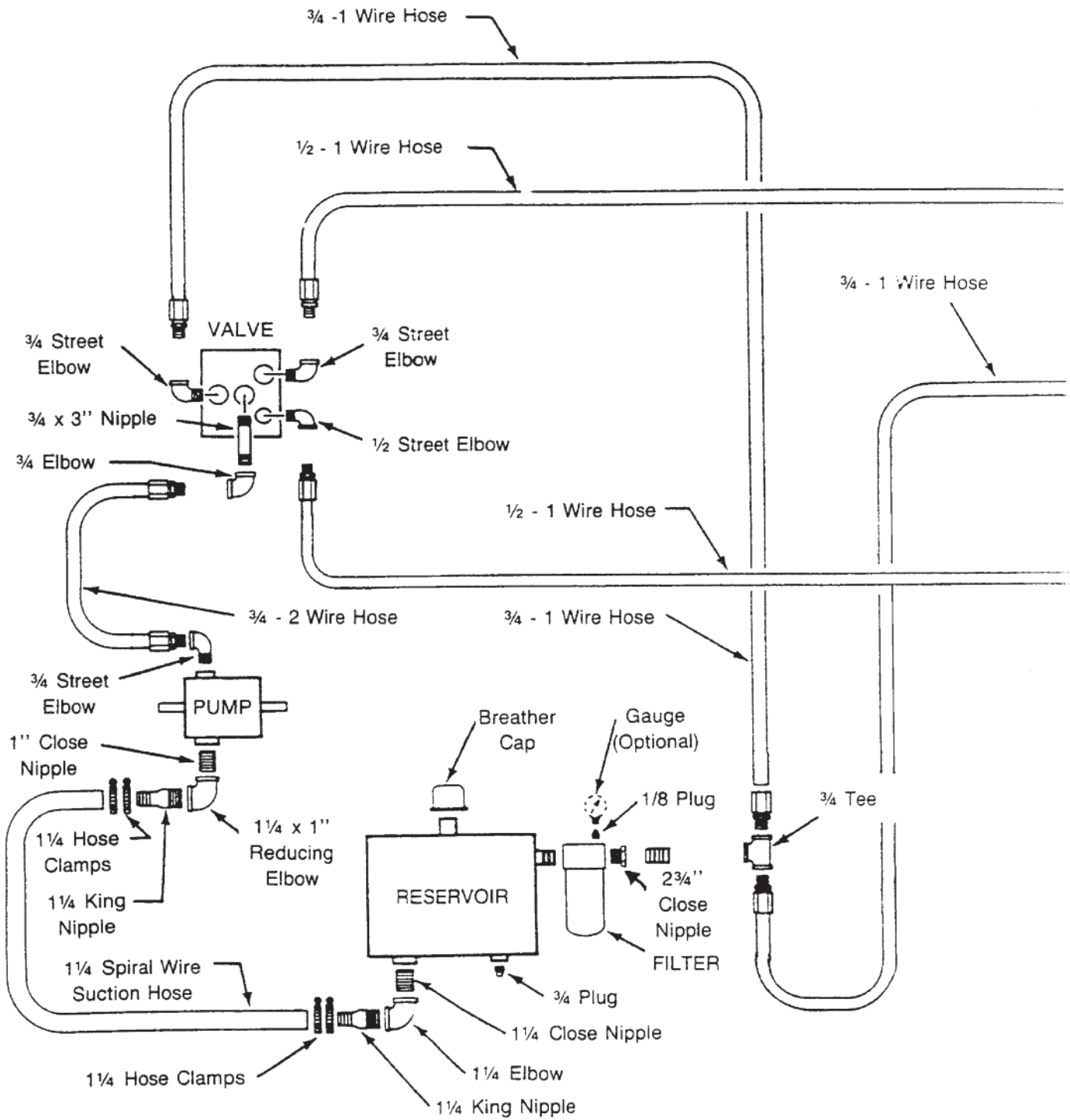
1. Remove the hanger assembly from the spinner.
2. Bolt the chute bracket to the hanger assembly.
3. Mount the CL chute to the trough by inserting the pins on the hanger assembly into the mounting brackets on the trough by the discharge. Secure with the lynch pins.
4. Drill holes in the chute at the desired location for the cross bar. Bolt cross bar to the chute.
(Chute may be trimmed to desired length.)
5. Bolt the chain to the lift slot on the spreader end plate.

STABILIZER BAR: (For Non-Self Leveling Chutes Only)

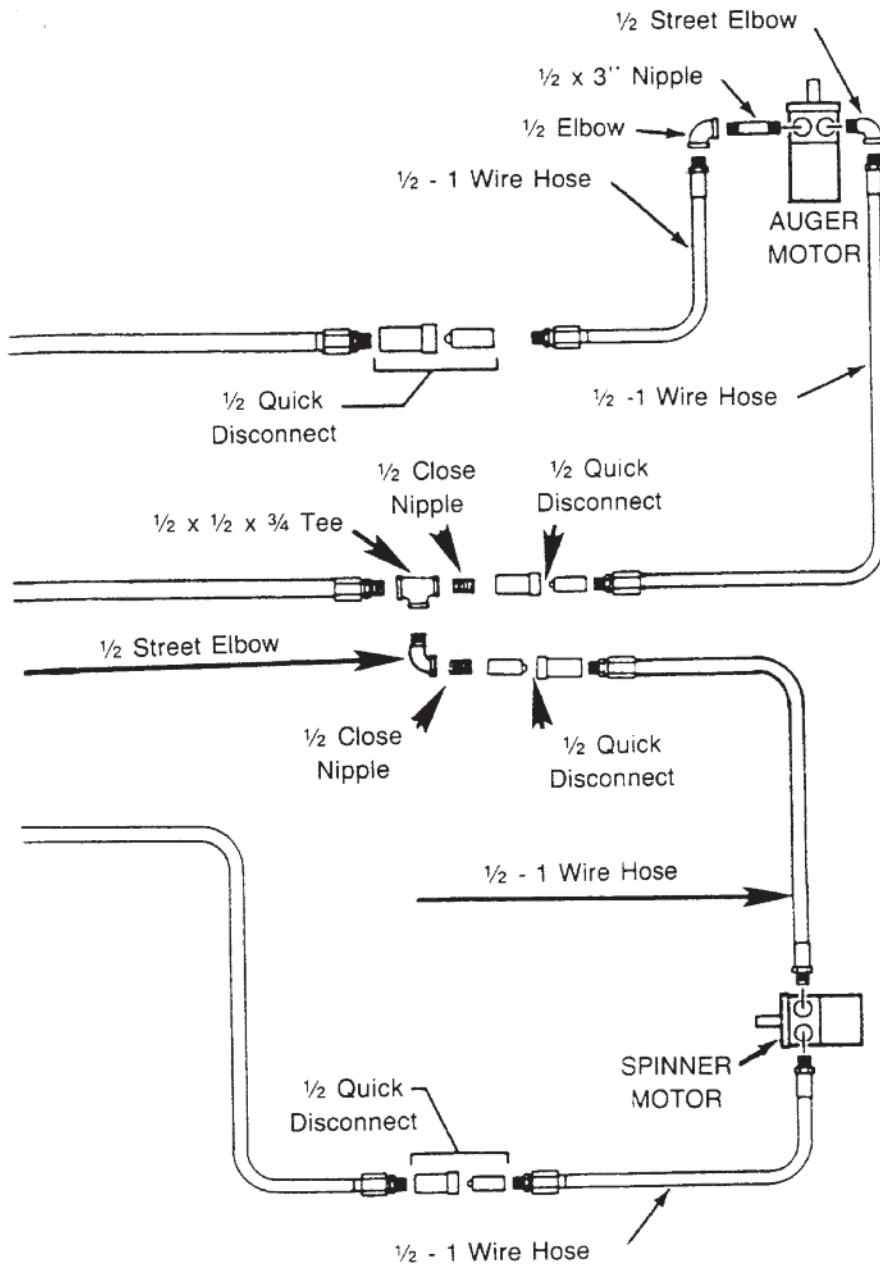
See spinner installation instructions. (Reference p 6-7)

CENTERLINE CHUTE INSTALLATION INSTRUCTIONS



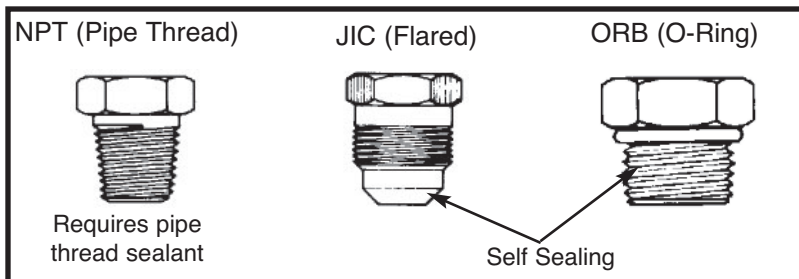


- This diagram is Monroe Truck Equipment Company's complete recommended hydraulic system.
- Standard pump, valve, tank and hose kits make up the complete system.
- This diagram may be used to install an entire system, or part of a system, depending upon kits supplied, and existing components on truck.
- Alternate proven methods and components are acceptable to suit various truck model requirements.



INSTALLATION NOTES

1. Hydraulic components should be kept as clean as possible during assembly operations.
2. Galvanized pipe and pipe fittings must not be used because flaking of galvanizing material can cause damage to major hydraulic components.
3. A pipe joint sealant compatible with hydraulic oil must be applied to all NPT fittings. (Teflon tape is not recommended.)
4. Sufficient hose should be allowed for raising dump body without kinking or stretching hose.
5. Hose should be protected where severe wear may be caused by vibration or sliding movement.
6. Long runs of hose should be supported by tie wiring or clamping.
7. Pressure and return hoses, connected to spinner or auger motors, may be reversed for proper motor rotation.
8. Three hose lines to rear of truck may be installed inside truck frame, under dump body floor, and secured in place.
9. Use hose manufacturer's recommendations for fitting reusable hose ends.
10. To eliminate hose twisting, allow hose end clamp to remain loose until hose end fitting is screwed tightly in place.



**HYDRAULIC PLUMBING
DIAGRAM
for
SPREADERS**

HYDRAULIC TROUBLE SHOOTING CHART

CONDITION 1

Pump cavitation recognized by excessive noise.

CAUSE

- Air entering system through suction lines.
- Suction line kinked, twisted or too long.
- Inadequate size suction line.
- Oil too heavy.
- Excessive pump speed. Normal pump speed 1200 to 1500 RPM

CORRECTION

- Check line from reservoir for possible leaks.
- Install suction line as short and straight as possible.
- Increase suction line size.
- Drain and replace with a low viscosity non-detergent oil.
- Pump capacity is 16 GPM at 1000 RPM. Decrease P.T.O. speed accordingly.

CONDITION 3

Erratic operation of auger and/or spinner.

CAUSE

- Low oil.
- Worn or defective motor.
- Dirty, worn or defective flow control valve.
- Plugged filter.
- Relief valve setting too low.
- Pump cavitation.
- Air vent on reservoir tank is blocked.

CORRECTION

- Fill reservoir to a $\frac{3}{4}$ full level.
- Repair or replace motor.
- Clean, repair or replace flow control.
- Replace filter element and clean filter.
- Adjust relief valve for 1500 PSI.
- Refer to pump section.
- Clean or replace vent cap to admit atmospheric pressure to inside of the tank.

CONDITION 2

Slow operation of auger and/or spinner.

CAUSE

- Worn or defective pump.
- Worn or defective motor.
- Pump cavitation.
- Insufficient pump speed.

CORRECTION

- Repair or replace pump.
- Repair or replace motor.
- Refer to pump section.
- Pump capacity is 16 GPM at 1000 RPM. Increase P.T.O. accordingly.

CONDITION 4

Auger and/or spinner will not operate.

CAUSE

- Quick disconnects are dirty, damaged, or improperly connected.
- Hose connections wrong.
- Foreign material in valve compensator.

CORRECTION

- Clean or replace and properly connect.
- Refer to illustration.
- Remove compensator and clean.

OPERATING INSTRUCTIONS



WARNING



THE OIL LEVEL MUST BE CHECKED BEFORE PLACING THE UNIT INTO OPERATION!
OIL LEVEL SHOULD BE CHECKED PERIODICALLY THEREAFTER.



CAUTION: Make certain everyone is clear of machine before starting engine or operation.

INITIAL TEST RUN:

1. The unit should be run without material to check operation.
2. Fill tank to within about 2" of the top.
3. Put the "On-Off" lever on the control valve to the "Off" position.
4. Start the engine, engage the P.T.O. or turn on the hydraulic system and allow the oil to circulate through the system.
5. Move the lever to the "On" position. If the engine lugs down, shut the valve "Off" IMMEDIATELY. This indicates the system is not properly plumbed, which must be corrected.
6. Check the spinner and auger to make sure they are turning in the right direction.
7. Check the system for leaks. Tighten hydraulic fittings as required.
8. Refill reservoir.

NORMAL OPERATION:

1. Place the cover plate in its upright position and latch.
2. Open the dump body tailgate latch and adjust stop chains so that the tailgate stops just short of the spreader cover plate.
3. Adjust the spinner if necessary.
4. Engage P.T.O. Turn on the hydraulic system.
5. Raise the dump body until material slides back and charges the spreader with granular material.
6. Set the control valve knobs to desired settings.
7. Engage the spreader by moving the control valve lever to the "On" position.

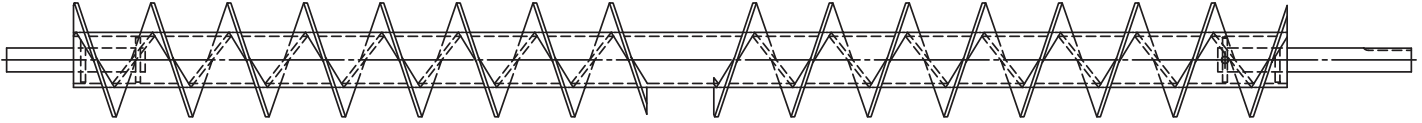
**SPREADER, REPLACEMENT TAILGATE, RT
CENTER DISCHARGE AND REVERSE FLIGHT**

Item	Qty	Part Number	Description
1	1	See Page 15	TROUGH WELDMENT
2	1	See Page 16	AUGER WLDMENT
3	1	See Page 17	AGITATOR WELDMENT
4	1	00042273-A 00042273-B 00042273-C 00136690-A 00136690-B 00136690-C	ANTI-FLOW PLATE WELDMENT, MS ANTI-FLOW PLATE WELDMENT, 304 SST ANTI-FLOW PLATE WELDMENT, AUSST ANTI-FLOW PLATE WELDMENT, RT-6, MS ANTI-FLOW PLATE WELDMENT, RT-6, 304 SST ANTI-FLOW PLATE WELDMENT, RT-6, AUSST <i>See Page 18</i>
5	1	05022035	PIN, #11, HAIR ZINC
6	2	00021724-A 00021724-B	BEARING KIT, 1.25, 2-BOLT, MS BEARING KIT, 1.25, 2-BOLT, 304 SST <i>See Page 19</i>
7	1	See Pages 20-22	DRIVE KIT
8	1	00057875-A 00057875-B	MOUNTING KIT, RT/RTS, MS MOUNTING KIT, RT/RTS, 304 SST <i>See Page 24-25</i>
9	1	00058135	DECAL KIT, TGT SPREADER, CHAIN <i>See Page 23</i>
10	1	05050095	TAG, SERIAL NUMBER, 1.25" X 3.5" SS

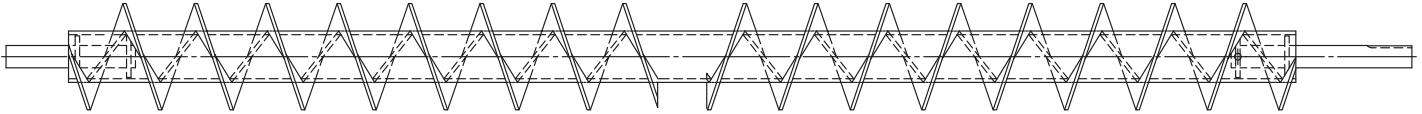
RT SPREADER TROUGH WELDMENTS

Auger	Discharge	Qty	Part Number	Description		
6" AUGER	CENTER DISCHARGE	1	00057874-A 00057874-A	TROUGH WELDMENT, MS696-CD, MS TROUGH WELDMENT, MS696-CD, 304 SST		
			00042270-A 00042270-B	TROUGH WELDMENT, MS796-CD, MS TROUGH WELDMENT, MS796-CD-304 SST		
			00096786-A 00096786-B 00096786-C 00097638-A 00097638-B 00097638-C	TROUGH WELDMENT, MS8923-6-CD, MS TROUGH WELDMENT, MS8923-6-CD, 304 SST TROUGH WELDMENT, MS8923-6-CD, AUSST TROUGH WELDMENT, MS8923-6-CD-SL, MS TROUGH WELDMENT, MS8923-6-CD-SL, 304 SST TROUGH WELDMENT, MS8923-6-CD-SL, AUSST		
			00019629-A 00019629-B	TROUGH WELDMENT, RT2230-6-CD, MS TROUGH WELDMENT, RT2230-6-CD, 304 SST		
			00095373-A 00095373-B	TROUGH WELDMENT, RT3142-6-CD, MS TROUGH WELDMENT, RT3142-6-CD, 304 SST		
			REVERSE FLIGHT	1	00086535-A 00086535-B	TROUGH WELDMENT, MS796-RF, MS TROUGH WELDMENT, MS796-RF, 304 SST
					00096784-A 00096784-B 00096784-C 00097639-A 00097639-B 00097639-C	TROUGH WELDMENT, MS8923-6-RF, MS TROUGH WELDMENT, MS8923-6-RF, 304 SST TROUGH WELDMENT, MS8923-6-RF, AUSST TROUGH WELDMENT, MS8923-6-RF-SL, MS TROUGH WELDMENT, MS8923-6-RF-SL, 304 SST TROUGH WELDMENT, MS8923-6-RF-SL, AUSST
	00019625-A 00019625-B	TROUGH WELDMENT, RT2230-6-RF, MS TROUGH WELDMENT, RT2230-6-RF, 304 SST				
	00095372-A 00095372-B	TROUGH WELDMENT, RT3142-6-RF, MS TROUGH WELDMENT, RT3142-6-RF, 304 SST				

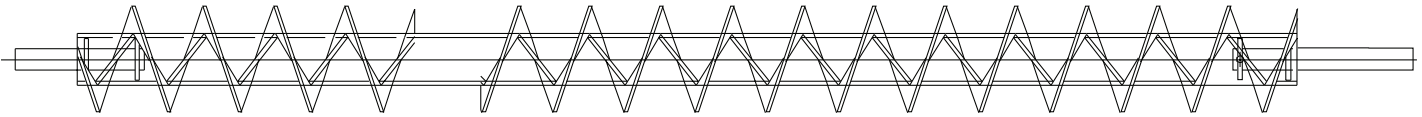
00057870 AUGER WELDMENT, MS696-CD



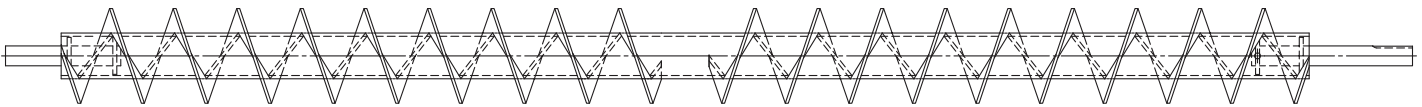
00057871 AUGER WELDMENT, MS796-CD



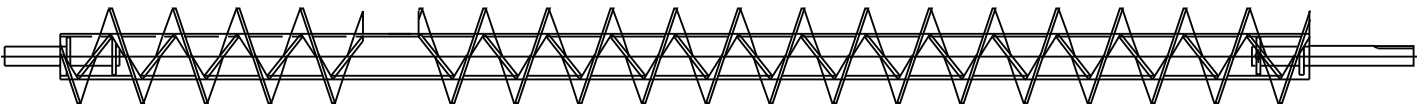
00086538 AUGER WELDMENT, MS796-RF



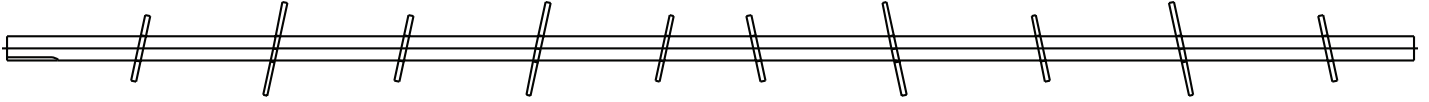
00096777 AUGER WELDMENT, MS8823-6-CD



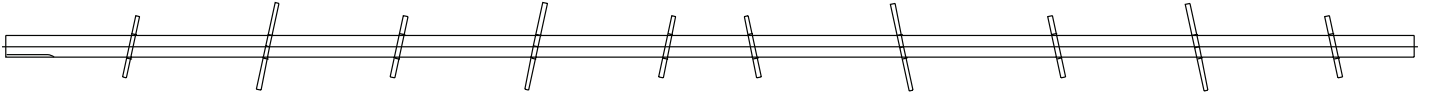
00096778 AUGER WELDMENT, MS8823-6-RF



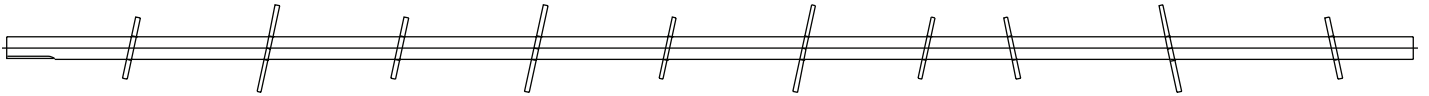
00057872 AGITATOR WELDMENT, MS696-CD



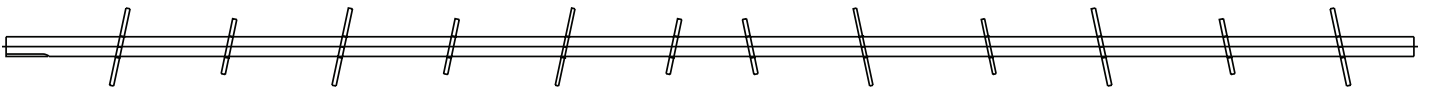
00042276 AGITATOR WELDMET, MS796-CD



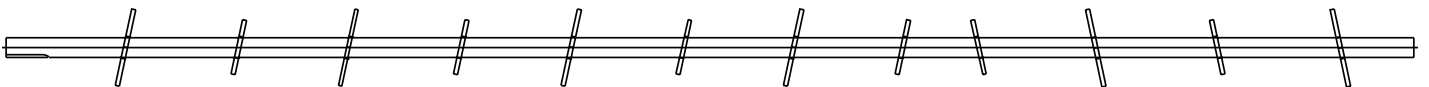
00086539 AGITATOR WELDMENT, MS796-RF



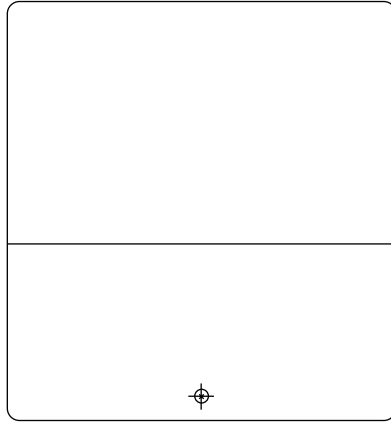
00096780 AGITATOR WELDMENT, MS8823-6-CD



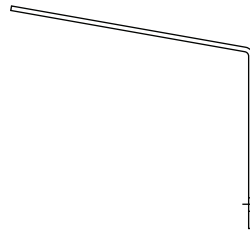
00096781 AGITATOR WELDMENT, MS8823-6-RF



00042273-A ANTI-FLOW PLATE, MS796/696, MS
00042273-B ANTI-FLOW PLATE, MS796/696, SST
00042273-C ANTI-FLOW PLATE, MS796/696, AUSST

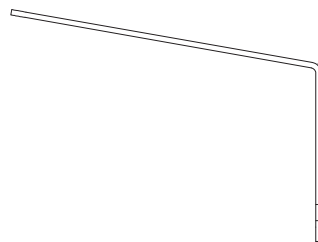
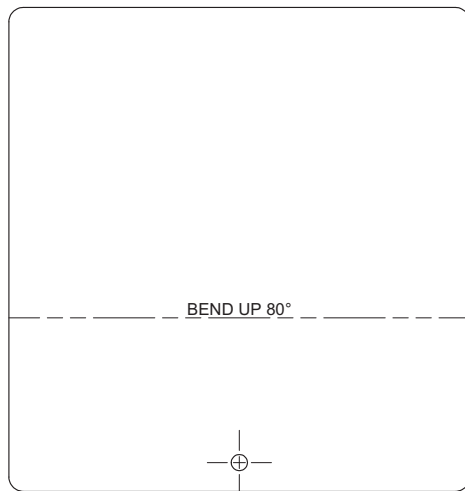


FLAT PATTERN

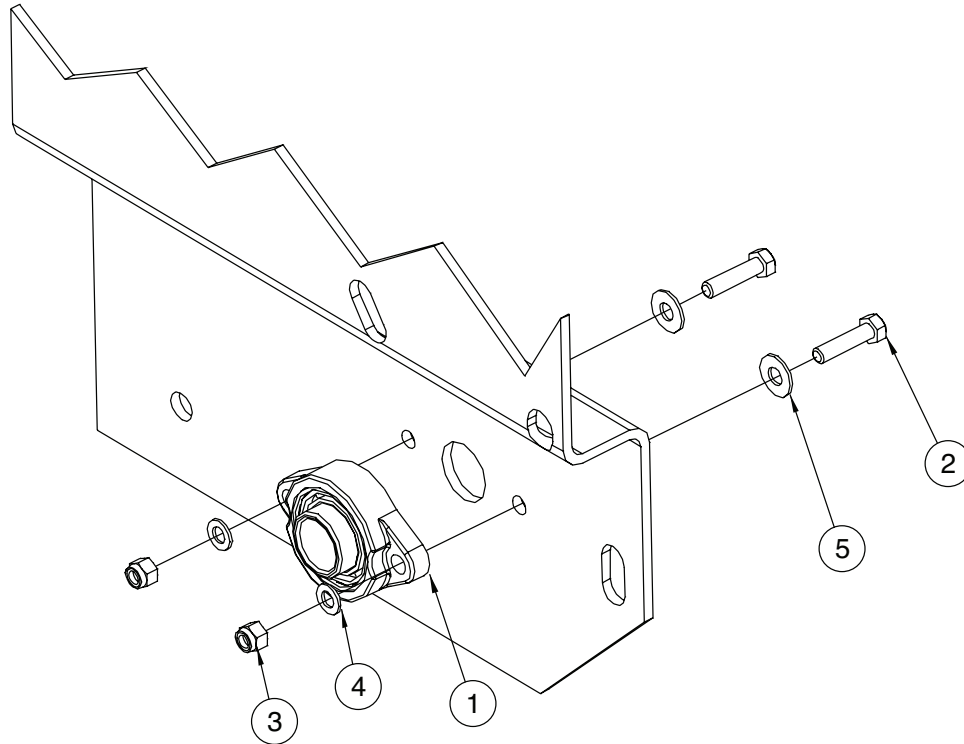


BEND DETAIL

00136690-A ANTI-FLOW PLATE, RT-6, MS
00136690-B ANTI-FLOW PLATE, RT-6, SST
00136690-C ANTI-FLOW PLATE, RT-6, AUSST



BEND DETAIL



00021724 BEARING KIT, 1.25, 2-BOLT

Item	Qty	Part Number	Description
1	1	05030024	BEARING, S1037.20, 1.25" 2-BOLT
2	2	05010645 05016162	BOLT, .375-16 X 1.5, G8, HHCS, ZINC BOLT, .375-16 X 1.5, HHCS, SST
3	2	05020898 05020891	NUT, .375-16, GC, TOP LOCK, C&W NUT, .375-16, NYLON LOCK, 316 SST
4	2	05021013 05021390	WASHER, .375, FLAT, MIL-CARB, SAE WASHER, .375, FLAT, SAE, SST
5	2	05021307 05021418	WASHER, .375, FLAT, ZINC WASHER, .375, FLAT, SST

00019624 DRIVE KIT, RT-6-CD/RF, CHAIN

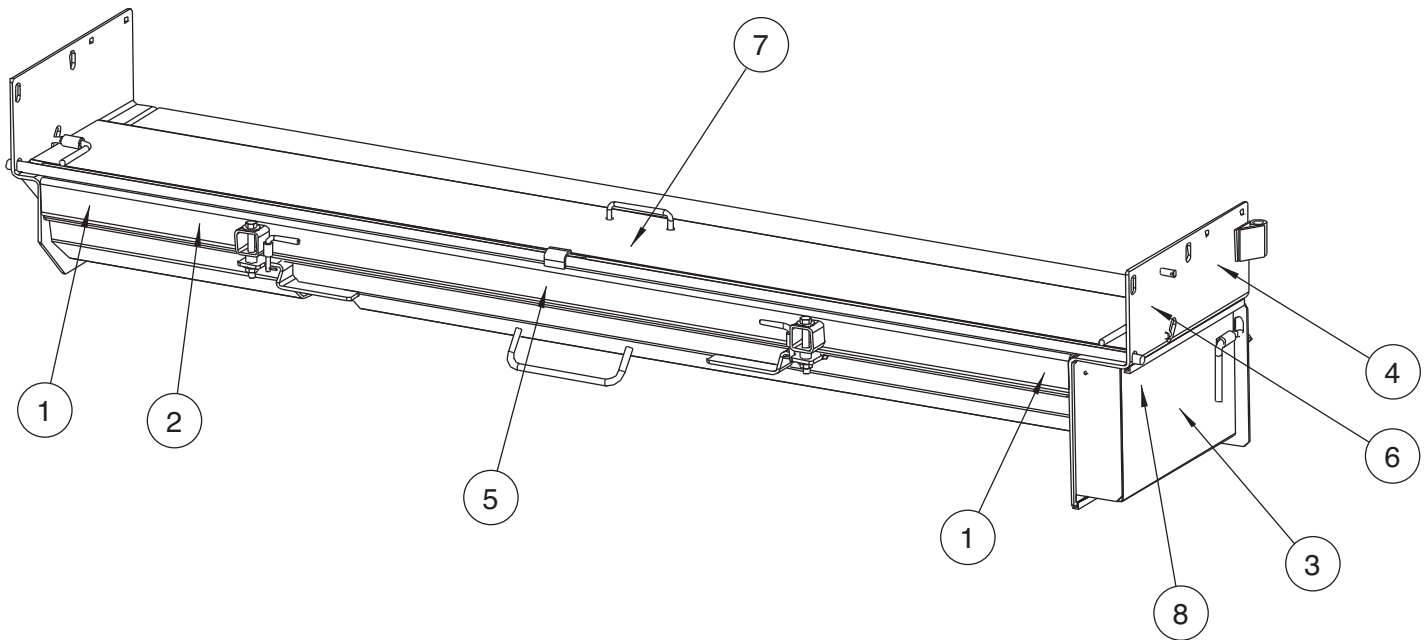
Item	Qty	Part Number	Description
1	1	00019623-A 00019623-B	CHAIN COVER, RT2230-6, RH, MS CHAIN COVER, RT2230-6, RH, SST
2	1	00022314-A 00022314-B 00022314-C	MOUNTING PLATE WELDMENT, UT-CD, MS MOUNTING PLATE WELDMENT, UT-CD, 304 SST MOUNTING PLATE WELDMENT, UT-CD, AUSST
3	1	05006549	MOTOR, HYD, WHITE, 10CID, 1" SHAFT <i>See Page 38-39</i>
4	1	05033010	SPROCKET, 60B10FX1, .25" KEYWAY
5	1	05033012	SPROCKET, 60B16FX1,.25" KEYWAY
6	1	05033014	SPROCKET, 60B26FX1.25, .25" KEYWAY
7	1	05036063	CHAIN ASSEMBLY
8	2	05050121	KEY, .25 X .25 X 1.5"
9	1	05022035	PIN, #11 ZINC
10	4	05010642 05016050	BOLT, .375-16 X .875, G8, HHCS, ZINC BOLT, .375-16 X .875, HHCS, SST
11	2	05010690 05036045	BOLT, .5-13 X 1.250, G8, HHCS, ZINC BOLT, .5-13 X 1.250, HHCS, SST
12	2	05020268 05020848	NUT, .5-13, G8, HEX, ZINC NUT, .5-13, G8, HEX, SST
13	4	05021365 05021392	WASHER, .375, LOCK, ZINC WASHER, .375, LOCK, SST
14	2	05021367 05021396	WASHER, .5, LOCK, ZINC WASHER, .5, LOCK, SST
15	1	05021309 05021391	WASHER, .5, FLAT, ZINC WASHER, .5, FLAT, SST
16	.25	05051390	RUST PROOFER HEAVY DUTY

00086554 DRIVE KIT, MS696-TG, CHAIN

Item	Qty	Part Number	Description
1	1	00086545-A 00086545-B	CHAIN COVER, MS696, RH, MS CHAIN COVER, MS696, RH, SST
2	1	00022314-A 00022314-B	MOUNTING PLATE WELDMENT, UT-CD, MS MOUNTING PLATE WELDMENT, UT-CD, 304 SST
3	1	05006549	MOTOR, HYD, WHITE, 10CID, 1" SHAFT <i>See Page 38-39</i>
4	1	05033010	SPROCKET, 60B10FX1, .25" KEYWAY
5	1	05033012	SPROCKET, 60B16FX1,.25" KEYWAY
6	1	05033014	SPROCKET, 60B26FX1.25, .25" KEYWAY
7	1	05036063	CHAIN ASSEMBLY
8	2	05050121	KEY, .25 X .25 X 1.5"
9	4	05010642 05016050	BOLT, .375-16 X .875, G8, HHCS, ZINC BOLT, .375-16 X .875, HHCS, SST
10	2	05010690 05036045	BOLT, .5-13 X 1.250, G8, HHCS, ZINC BOLT, .5-13 X 1.250, HHCS, SST
11	2	05020268 05020848	NUT, .5-13, G8, HEX, ZINC NUT, .5-13, G8, HEX, SST
12	4	05021365 05021392	WASHER, .375, LOCK, ZINC WASHER, .375, LOCK, SST
13	2	05021367 05021396	WASHER, .5, LOCK, ZINC WASHER, .5, LOCK, SST
14	1	05021309 05021391	WASHER, .5, FLAT, ZINC WASHER, .5, FLAT, SST
15	.25	05051390	RUST PROOFER HEAVY DUTY

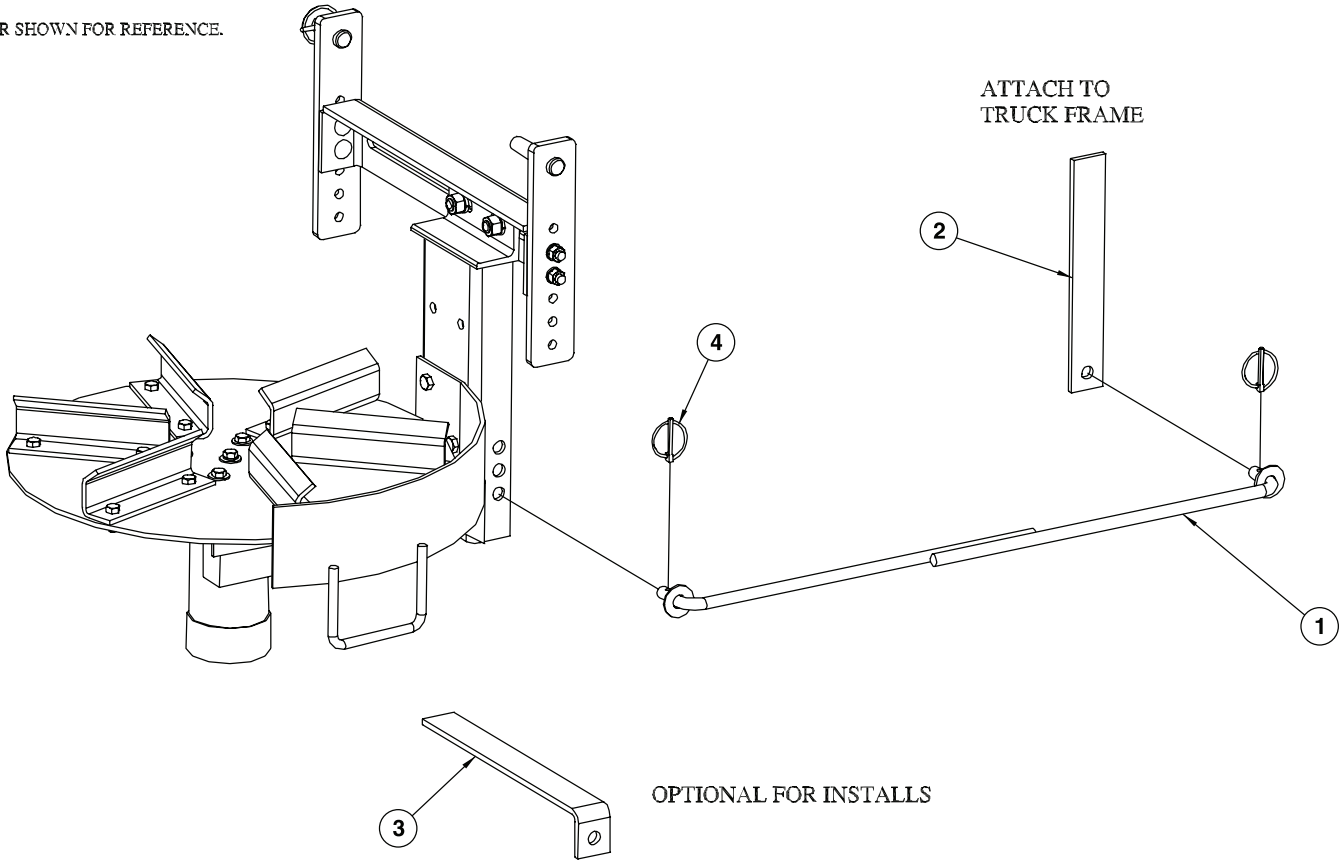
00021787 DRIVE KIT, MS796, CHAIN

Item	Qty	Part Number	Description
1	1	01162727-A 01162727-B	CHAIN COVER, MS796, RH, MS CHAIN COVER, MS796, RH, SST
2	1	00022314-A 00022314-B	MOUNTING PLATE WELDMENT, UT-CD, MS MOUNTING PLATE WELDMENT, UT-CD, 304 SST
3	1	05006549	MOTOR, HYD, WHITE, 10CID, 1" SHAFT <i>See Page 38</i>
4	1	05033010	SPROCKET, 60B10FX1, .25" KEYWAY
5	1	05033012	SPROCKET, 60B16FX1,.25" KEYWAY
6	1	05033014	SPROCKET, 60B26FX1.25, .25" KEYWAY
7	1	05036063	CHAIN ASSEMBLY
8	2	05050121	KEY, .25 X .25 X 1.5"
9	4	05010642 05016050	BOLT, .375-16 X .875, G8, HHCS, ZINC BOLT, .375-16 X .875, HHCS, SST
10	2	05010690 05036045	BOLT, .5-13 X 1.250, G8, HHCS, ZINC BOLT, .5-13 X 1.250, HHCS, SST
11	2	05020268 05020848	NUT, .5-13, G8, HEX, ZINC NUT, .5-13, G8, HEX, SST
12	4	05021365 05021392	WASHER, .375, LOCK, ZINC WASHER, .375, LOCK, SST
13	2	05021367 05021396	WASHER, .5, LOCK, ZINC WASHER, .5, LOCK, SST
14	1	05021309 05021391	WASHER, .5, FLAT, ZINC WASHER, .5, FLAT, SST
15	.25	05051390	RUST PROOFER HEAVY DUTY



00058135 DECAL KIT,TGT SPREADER,CHAIN DR			
Item	Qty.	Part Number	Description
1	2	05051401	DECAL,DANGER:TURNING AUGERS...
2	1	05051402	DECAL,DANGER:TURNING SPINNERS.
3	1	05051403	DECAL,SAFETY CHAIN COVER
4	1	05051404	DECAL,CAUTION #1-#6
5	1	05051405	DECAL,MONROE SPREADER
6	1	05052311	DECAL,QUALITY CHECK
7	1	05051625	DECAL,MONROE SNOW & ICE CONTROL
8	1	05052310	DECAL,DANGER:KEEP GUARDS IN PLACE

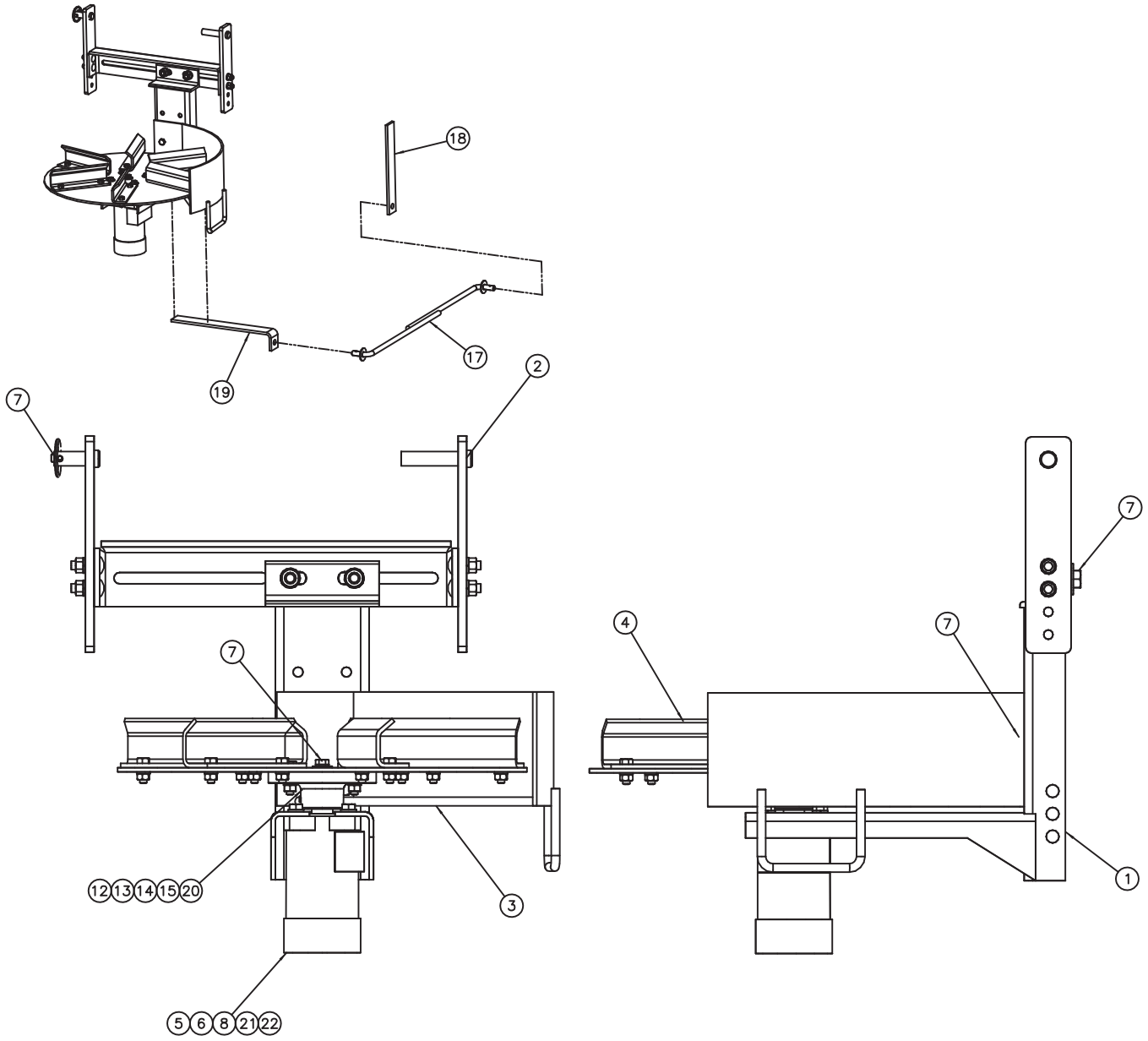
1. SPINNER SHOWN FOR REFERENCE.



00057875 MOUNTING KIT/RTS

Item	Qty	Part Number	Description
1	2	00041156-A 00041156-B	STABILIZER ROD WELDMENT, MS-UT, MS STABILIZER ROD WELDMENT, MS-UT, 304 SST
2	1	00041121-A 00041121-B	STABILIZER, SPINNER, MS-UT, MS STABILIZER, SPINNER, MS-UT, 304 SST
3	1	00041124-A 00041124-B	BRACKET, STABILIZER, MS-UT, MS BRACKET, STABILIZER, MS-UT, 304 SST
4	3	05022106	PIN, .188, LYNCH

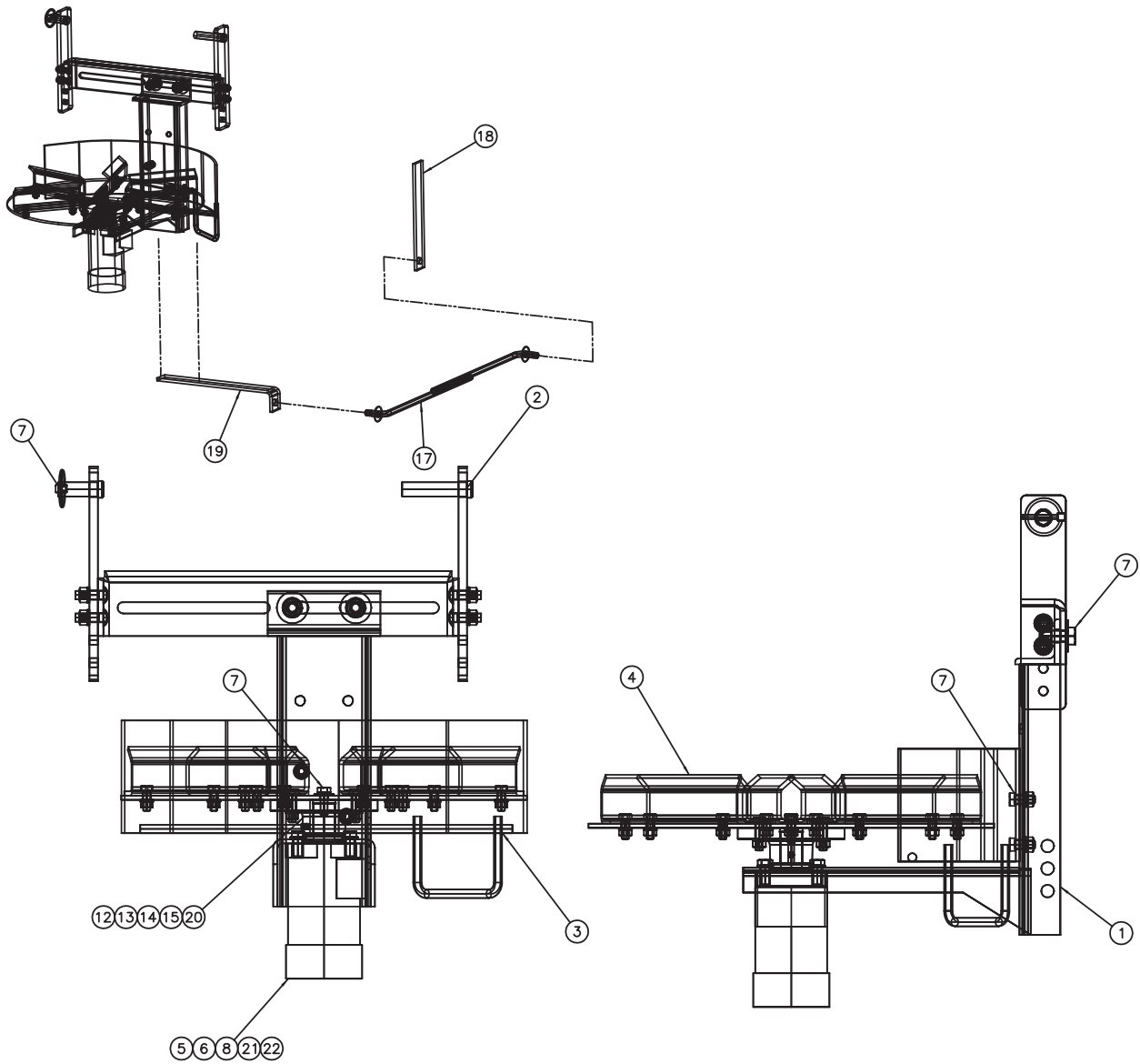
00026544 SPINNER ASSEMBLY, LH



00026544 SPINNER ASSEMBLY, TGT, LH SEAL SAVER

Item	Qty.	Part Number	Description
1	1	00026543-A	FRAME WLDMT,SPINNER,TGT,MS
1	1	00026543-B	FRAME WLDMT,SPINNER,TGT,304SS
1	1	00026543-C	FRAME WLDMT,SPINNER,TGT,AUSST
2	1	00103663-A	HANGER ASSEMBLY,SPINNER,TGT,MS
2	1	00103663-B	HANGER ASSEMBLY,SPINNER,TGT,AUSST
3	1	00105117-A	SHIELD WLDMT,LH,SPINNER,TGT,MS
3	1	00105117-B	SHIELD WLDMT,LH,SPINNER,TGT,304SS
4	1	00099401-A	SPINNER DISC ASSY,18,CCW,MS <i>See Page 37</i>
4	1	00099401-B	SPINNER DISC ASSY,18,CCW,304
4	1	00099401-D	SPINNER DISC ASSY,18,CCW,AUSST
4	1	05050071-B	DISC,SPINNER,18"CCW,POLY
5	1	05006673	MOTOR,HYD,WHITE,3.2CI,4B,1"EXT <i>See Page 40-41</i>
6	4	05010645	BOLT .375-16 x 1.50 G8 HHCS ZC
6	4	05016162	BOLT .375-16 x 1.50 HHCS SS
7	1	05016906-A	BOLT KIT,SPINNER,MS,MT UNDER
7	1	05016906-B	BOLT KIT,SPINNER,MS,MT UNDER
8	4	05021365	WASHER .375 LOCK ZC
8	4	05021392	WASHER .375 LOCK SS
12	1	05051380	HUB,SPINNER ASSY,STD,SHORT,W/SET SCREW
13	4	05010619	BOLT .313-18 x 1.25 G8 HHCS ZC
13	4	05016139	BOLT .313-18 x 1.25 HHCS SS
13	4	05016140	BOLT .313-18 x 1.50 HHCS SS
14	4	05020265	NUT .313-18 G8 HEX ZC
14	4	05020855	NUT .313-18 HEX SS
15	4	05021364	WASHER .313 LOCK ZC
15	4	05021407	WASHER .313 LOCK SS
16	1	05052485	TRASH LINER,CLEAR 40 x 46
17	2	00041156-A	STABILIZER ROD WLDMT,MS-UT,MS
17	2	00041156-B	STABILIZER ROD WLDMT,MS-UT,304
18	1	00041121-A	STABILIZER,SPINNER,MS-UT,MS
18	1	00041121-B	STABILIZER,SPINNER,MS-UT,304
19	1	00041124-A	BRACKET,STABILIZER,MS-UT,MS
19	1	00041124-B	BRACKET,STABILIZER,MS-UT,304
20	4	05021306	WASHER .313 FLAT ZC
20	4	05021404	WASHER .313 FLAT SS
21	1	00122073	SEAL SAVER,MOTOR,SPINNER
22	1	05050288	GREASE ZERK,.250-28 STRAIGHT

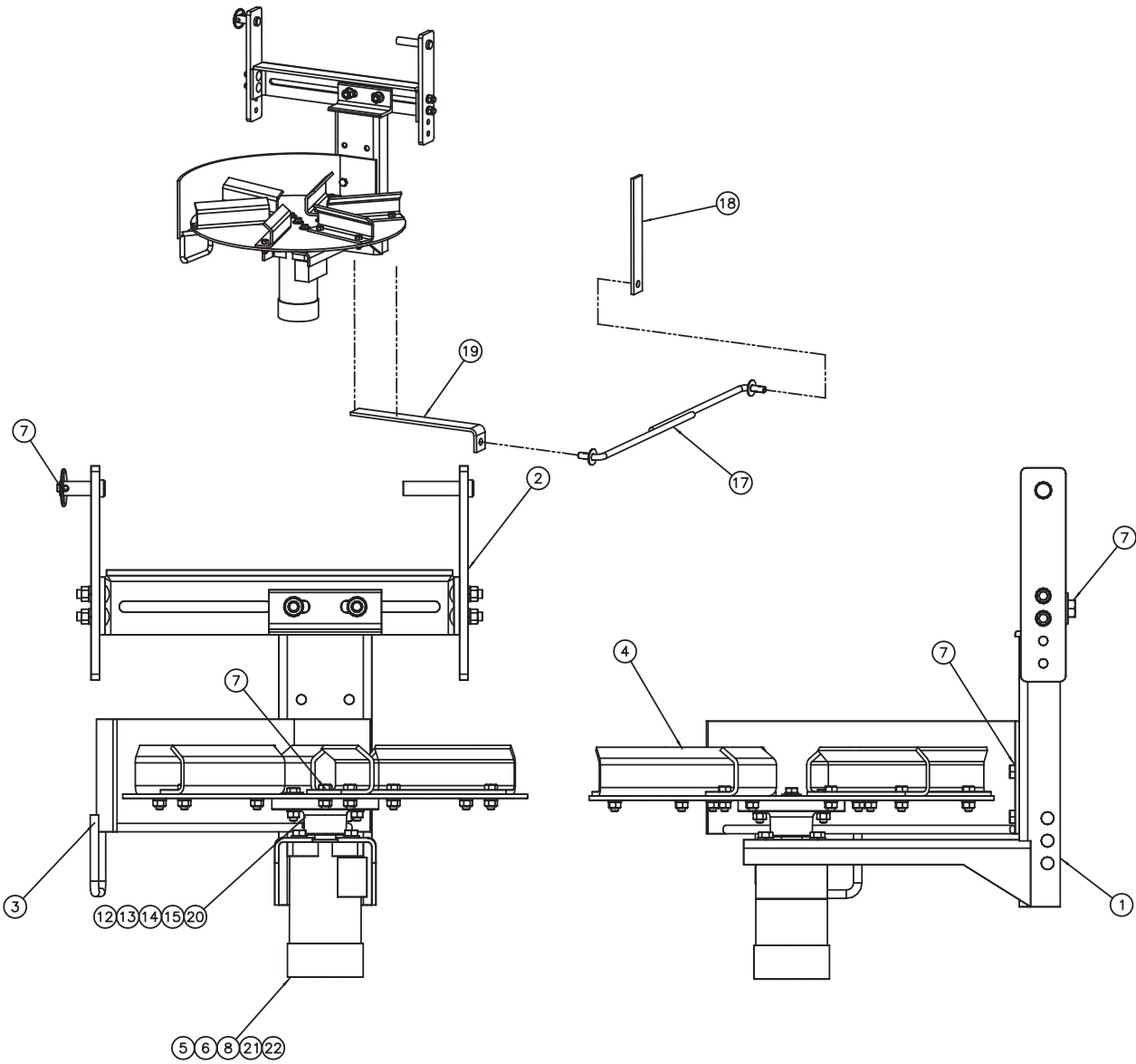
00026548 SPINNER ASSEMBLY, CENTER



00026548 SPINNER ASSEMBLY, TGT, CENTER

Item	Qty.	Part Number	Description
1	1	00026543-A	FRAME WLDMT,SPINNER,TGT,MS
1	1	00026543-B	FRAME WLDMT,SPINNER,TGT,304SS
1	1	00026543-C	FRAME WLDMT,SPINNER,TGT,AUSST
2	1	00103663-A	HANGER ASSEMBLY,SPINNER,TGT,MS
2	1	00103663-B	HANGER ASSEMBLY,SPINNER,TGT,AUSST
3	1	00105119-A	SHIELD WLDMT,CD,SPINNER,TGT,MS
3	1	00105119-B	SHIELD WLDMT,CD,SPINNER,TGT,304SS
4	1	00099401-A	SPINNER DISC ASSY,18,CCW,MS <i>See Page 37</i>
4	1	00099401-B	SPINNER DISC ASSY,18,CCW,304SS
4	1	00099401-D	SPINNER DISC ASSY,18,CCW,AUSST
4	1	05050071-B	DISC,SPINNER,18"CCW,POLY,
5	1	05006673	MOTOR,HYD,WHITE,3.2CI,4B,1"EXT <i>See Page 40-41</i>
6	4	05010645	BOLT .375-16 x 1.50 HHCS ZC
6	4	05016162	BOLT .375-16 x 1.50 HHCS SS
7	1	05016906-A	BOLT KIT,SPINNER,MS,MT UNDER
7	1	05016906-B	BOLT KIT,SPINNER,MS,MT UNDER
8	4	05021365	WASHER .375 LOCK ZC
8	4	05021392	WASHER .375 LOCK SS
12	1	05051380	HUB,SPINNER ASSY,STD,SHORT,W/SET SCREW
13	4	05010619	BOLT .313-18 x 1.25 G8 HHCS ZC
13	4	05016139	BOLT .313-18 x 1.25 HHCS SS
14	4	05020265	NUT .313-18 G8 HEX ZC
14	4	05020855	NUT .313-18 HEX SS
15	4	05021364	WASHER .313 LOCK ZC
15	4	05021407	WASHER .313 LOCK SS
16	1	05052485	TRASH LINER,CLEAR 40 x 46
17	2	00041156-A	STABILIZER ROD WLDMT,MS-UT,MS
17	2	00041156-B	STABILIZER ROD WLDMT,MS-UT,304
18	1	00041121-A	STABILIZER,SPINNER,MS-UT,MS
18	1	00041121-B	STABILIZER,SPINNER,MS-UT,304
19	1	00041124-A	BRACKET,STABILIZER,MS-UT,MS
19	1	00041124-B	BRACKET,STABILIZER,MS-UT,304
20	4	05021306	WASHER .313 FLAT ZC
20	4	05021404	WASHER .313 FLAT SS
21	1	00122073	SEAL SAVER,MOTOR,SPINNER
22	1	05050288	GREASE FITTING, .250-28 UNF ST

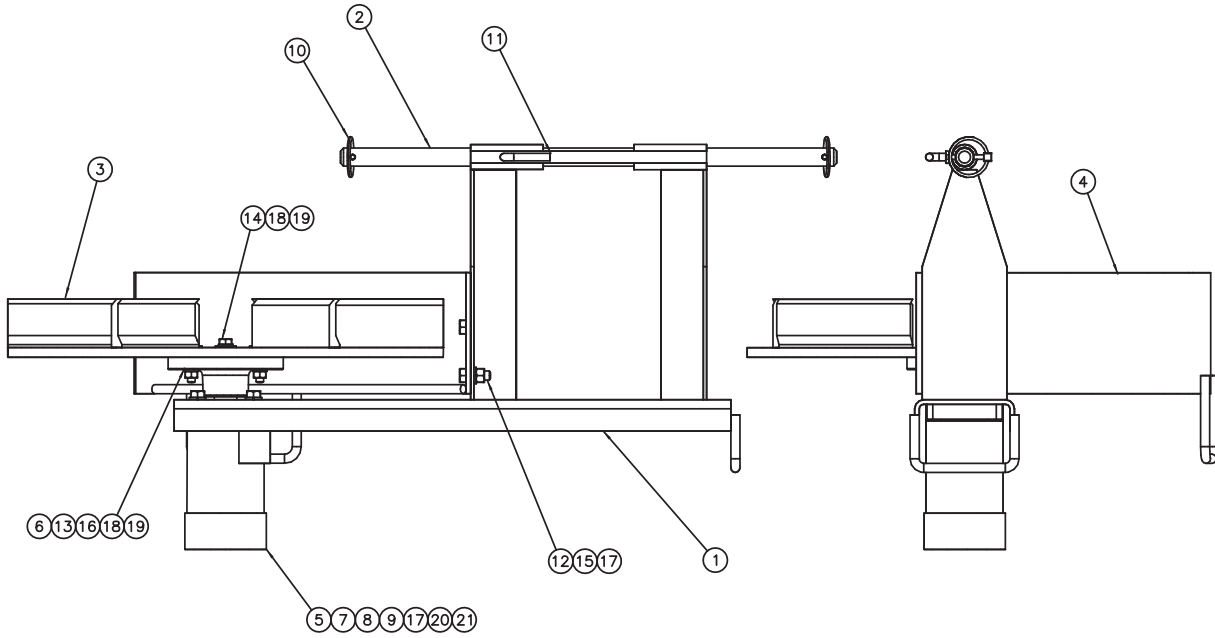
00026549 SPINNER ASSEMBLY, RH



00026549 SPINNER ASSEMBLY, TGT, RH

Item	Qty.	Part Number	Description
1	1	00026543-A	FRAME WLDMT,SPINNER,TGT,MS
1	1	00026543-B	FRAME WLDMT,SPINNER,TGT,304SS
2	1	00103663-A	HANGER ASSEMBLY,SPINNER,TGT,MS
2	1	00103663-B	HANGER ASSEMBLY,SPINNER,TGT,304SS
3	1	00105118-A	SHIELD WLDMT,RH,SPINNER,TGT,MS
3	1	00105118-B	SHIELD WLDMT,RH,SPINNER,TGT,304SS
4	1	00099400-A	SPINNER DISC ASSY,18,CW,MS <i>See Page 37</i>
4	1	00099400-B	SPINNER DISC ASSY,18,CW,304SS
4	1	05051054	DISC,SPINNER,18"CW,POLY,RED <i>See Page 40-41</i>
5	1	05006673	MOTOR,HYD,WHITE,3.2CI,4B,1"EXT
6	4	05010645	BOLT .375-16 x 1.50 G8 HHCS ZC
7	1	05016906-A	BOLT KIT,SPINNER,MS,MT UNDER
7	1	05016906-B	BOLT KIT,SPINNER,MS,MT UNDER
8	4	05021365	WASHER .375 LOCK ZC
8	4	05021392	WASHER .375 LOCK SS
12	1	05051380	HUB,SPINNER ASSY,STD,SHORT,W/SET SCREW
13	4	05010619	BOLT .313-18 x 1.25 G8 HHCS ZC
13	4	05010620	BOLT .313-18 x 1.50 G8 HHCS ZC
13	4	05016139	BOLT .313-18 x 1.25 HHCS SS
13	4	05016140	BOLT .313-18 x 1.50 HHCS SS
14	4	05020265	NUT .313-18 G8 HEX ZC
14	4	05020855	NUT .313-18 HEX SS
15	4	05021364	WASHER .313 LOCK ZC
15	4	05021407	WASHER .313 LOCK SS
16	1	05052485	TRASH LINER,CLEAR 40 x 46
17	2	00041156-A	STABILIZER ROD WLDMT,MS-UT,MS
17	2	00041156-B	STABILIZER ROD WLDMT,MS-UT,304
18	1	00041121-A	STABILIZER,SPINNER,MS-UT,MS
18	1	00041121-B	STABILIZER,SPINNER,MS-UT,304
19	1	00041124-A	BRACKET,STABILIZER,MS-UT,MS
19	1	00041124-B	BRACKET,STABILIZER,MS-UT,304
20	4	05021306	WASHER .313 FLAT ZC
20	4	05021404	WASHER .313 FLAT SS
21	1	00122073	SEAL SAVER,MOTOR,SPINNER
22	1	05050288	GREASE FITTING, .250-28 UNF ST

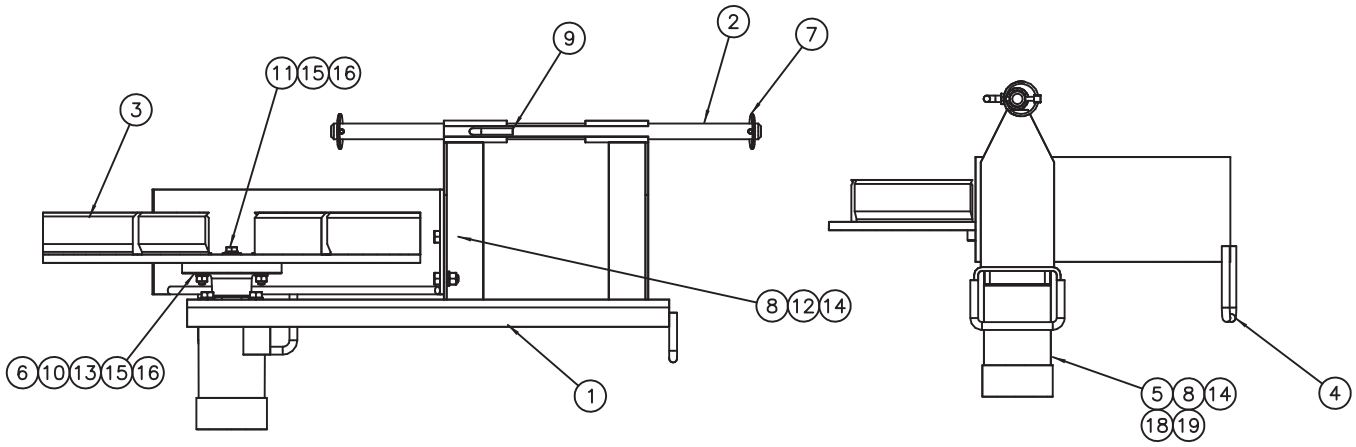
00022064 SPINNER ASSY, SELF-LEVEL, LH



00022064 SPINNER ASSEMBLY, TGT, LH, SELF LEVELING, SEAL SAVER

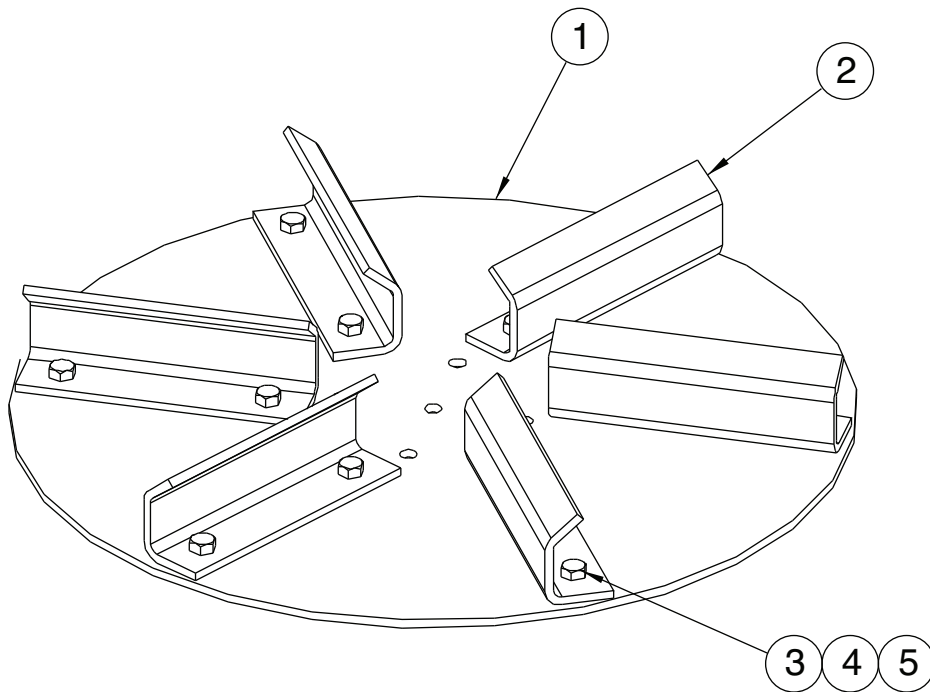
Item	Qty.	Part Number	Description
1	1	00022057-A	FRAME WLDMT,SPNNR,SELF-LVL,MS
1	1	00022057-B	FRAME WLDMT,SPNNR,SELF-LVL,304
1	1	00022057-C	FRAME WLDMT,SPNNR,SELF-LVL,AUSST
2	1	00022039	PIVOT ROD,SPINNER,SELF-LVL,TGT
3	1	00099401-A	SPINNER DISC ASSY,18,CCW,MS
3	1	00099401-B	SPINNER DISC ASSY,18,CCW,304 <i>See Page 36</i>
3	1	00099401-C	SPINNER DISC ASSY,18,CCW,AR
3	1	00099401-D	SPINNER DISC ASSY,18,CCW,AUSST
3	1	05050071-B	SPINNER DISC,18"CCW,POLY
4	1	00105118-A	SHIELD WLDMT,RH,SPINNER,TGT,MS
4	1	00105118-B	SHIELD WLDMT,RH,SPINNER,TGT,304
5	1	05006673	MOTOR,HYD,WHITE,3.2CI,4B,1"EXT <i>See Page 40-41</i>
6	1	05051380	HUB,SPINNER ASSY,STD,SHORT,W/SET SCREWS
7	1	00122073	SEAL SAVER,MOTOR,SPINNER
8	1	05050288	GREASE ZERK,.250-28 STRAIGHT
9	4	05010645	BOLT .375-16 x 1.50 G8 HHCS ZC
9	4	05016162	BOLT .375-16 x 1.50 HHCS SS
10	2	05022106	PIN .188 LYNCH
11	1	05016098	BOLT .313-18 x 1.75 L-SHAPE
12	2	05010642	BOLT .375-16 x .875 G8 HHCS ZC
12	2	05016050	BOLT .375-16 x .875 HHCS SST
13	4	05010619	BOLT .313-18 x 1.25 G8 HHCS ZC
13	4	05016139	BOLT .313-18 x 1.250 HHCS SST
14	1	05010618	BOLT .313-18 x 1.000 G8 HHCS ZC
14	1	05016138	BOLT .313-18 x 1.000 HHCS SST
15	2	05020266	NUT .375-16 G8 HEX ZC
15	2	05020842	NUT .375-16 HEX SST
16	4	05020265	NUT .313-18 G8 HEX ZC
16	4	05020855	NUT .313-18 HEX SST
17	6	05021365	WASHER .375 LOCK ZC
17	6	05021392	WASHER .375 LOCK SST
18	1	05021404	WASHER .313 FLAT SST
18	5	05021306	WASHER .313 FLAT ZC
19	5	05021364	WASHER .313 LOCK ZC
19	5	05021407	WASHER .313 LOCK SST
20	1	05050236	CARDBOARD,BOX,24" x 12" 20"
21	1	05052485	TRASH LINER

00012231 SPINNER ASSY, LH, SELF-LEVEL,SHORT



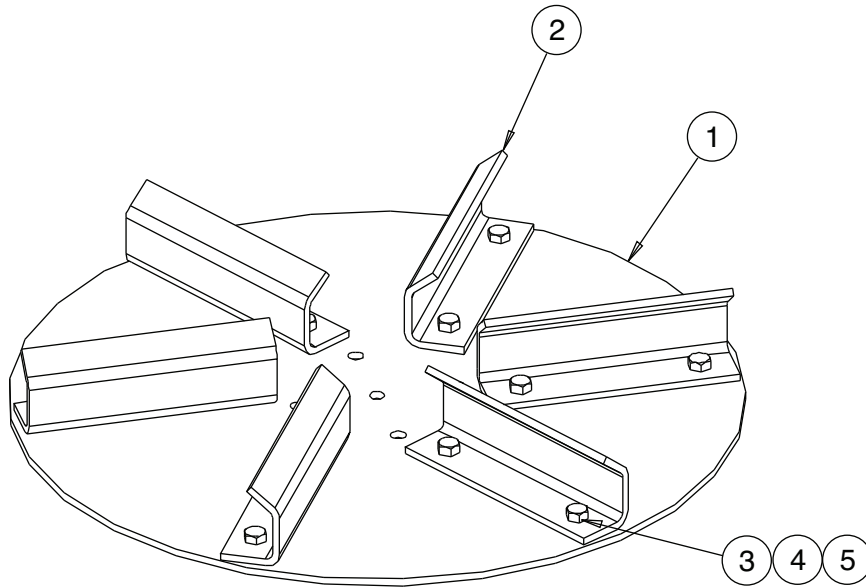
00012231 SPINNER ASSEMBLY, TGT, LH, SELF LEVEL, SHORT

Item	Qty.	Part Number	Description
1	1	00033130-A	FRAME WLDMT,SELF-LVL,SHORT,MS
1	1	00033130-B	PIVOT ROD,SPINNER,SELF-LVL,TGT
2	1	00022039	PIVOT ROD,SPINNER,SELF-LVL,TGT
3	1	00099401-A	SPINNER DISC ASSY,18,CCW,MS <i>See Page 36</i>
3	1	05050071-B	SPINNER DISC,18"POLY,CCW
4	1	00105118-A	SHIELD WLDMT,RH,SPINNER,TGT,MS
4	1	00105118-B	SHIELD WLDMT,RH,SPINNER,TGT,304SS
5	1	05006673	MOTOR,HYD,WHITE,3.2CI,4B,1"EXT <i>See Page 40-41</i>
6	1	05051380	HUB,SPINNER ASSY,STD,SHORT,W/SET SCREW
7	2	05022106	PIN .188 LYNCH
8	6	05010645	BOLT .375-16 x 1.50 G8 HHCS ZC
8	6	05016162	BOLT .375-16 x 1.50 HHCS SST
9	1	05016098	BOLT .313-18 x 1.75 L-SHAPE
10	4	05010619	BOLT .313-18 x 1.25 G8 HHCS ZC
10	4	05010640	BOLT .313-18 x 1.500 HHCS SST
11	1	05010618	BOLT .313-18 x 1.000 G8 HHCS ZC
11	1	05010643	BOLT .375-16 x 1.00 G8 HHCS ZC
11	1	05016034	BOLT .375-16 x 1.00 HHCS SST
12	2	05020266	NUT .375-16 G8 HEX ZC
12	2	05020842	NUT .375-16 HEX SST
13	4	05020265	NUT .313-18 G8 HSX ZC
13	4	05020855	NUT .313-18 HEX SST
14	6	05021365	WASHER .375 LOCK ZC
14	6	05021392	WASHER .375 LOCK SST
15	5	05021364	WASHER .313 LOCK ZC
15	5	05021407	WASHER .313 LOCK SST
16	1	05021306	WASHER .313 FLAT ZC
16	5	05021404	WASHER .313 FLAT SST
18	1	00122073	SEAL SAVER,MOTOR,SPINNER
19	1	05050288	GREASE ZERK,.250-28 STRAIGHT



00099401-A DISC ASSEMBLY, SPINNER, 18" CCW, MS
00099401-B DISC ASSEMBLY, SPINNER, 18" CCW, 304 SST
00099401-C DISC ASSEMBLY, SPIPNNER, 18" CCW, AR

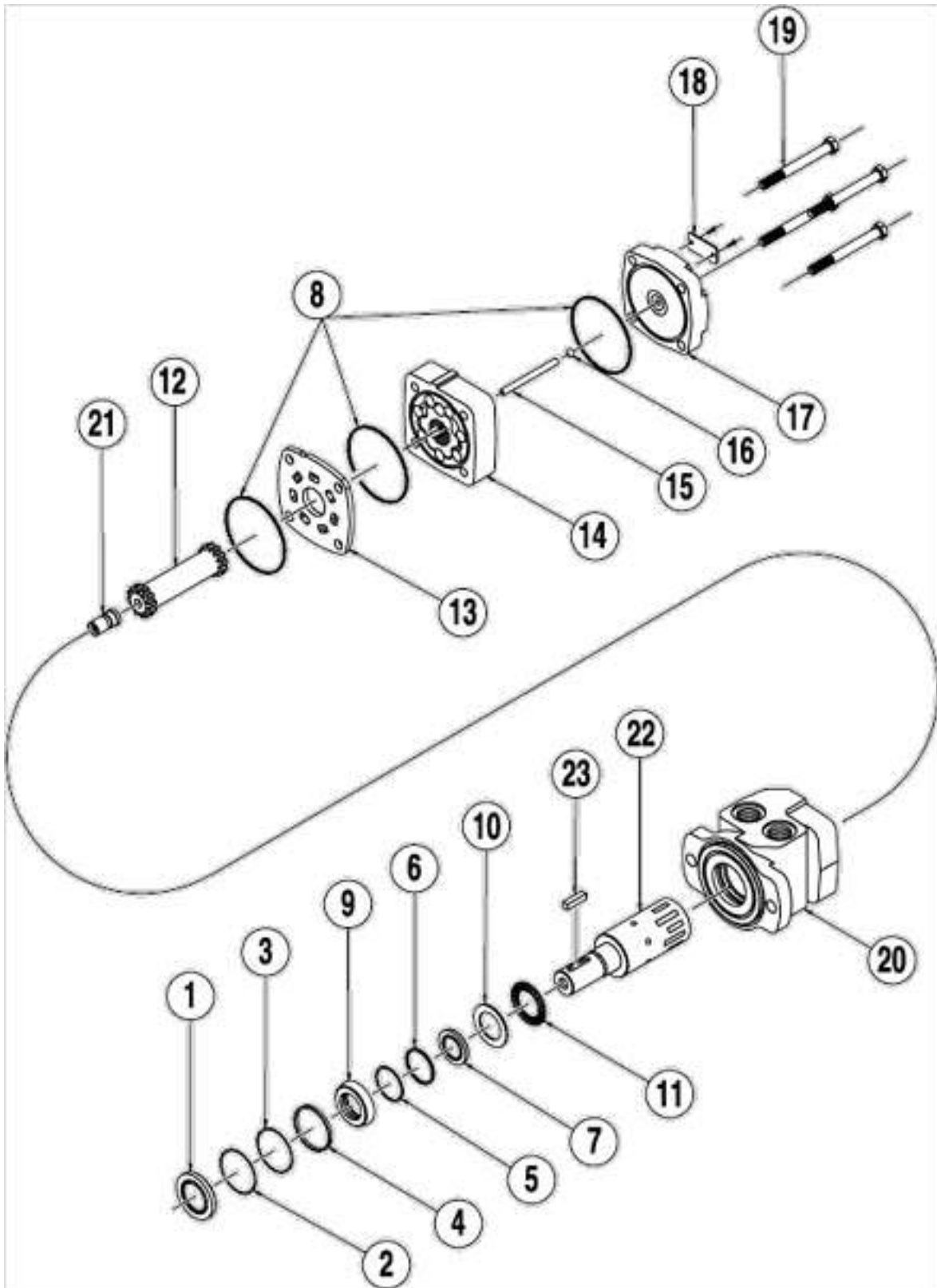
Item	Qty	Part Number	Description
1	1	00080420-A 00080420-B 00080420-D	DISC, SPINNER, 18" MS DISC, SPINNER, 18", 304 DISC SPINNER, 18", AR
2	6	00080425-A 00080425-B	FLITE SPINNER, MS FLITE SPINNER, SST
3	12	05010617 05016137	BOLT, .312-18 X .875, G8, HHCS, ZINC BOLT, .312-18 X .875, HHCS, SST
4	12	05020265 05020855	NUT, .312-18, G8, HEX, ZINC NUT, .312-18, G8, HEX, SST
5	12	05021364 05021407	WASHER, .312, LOCK, ZINC WASHER, .312, LOCK, SST



00099400-A DISC ASSEMBLY, SPINNER, 18" CW, MS
00099400-B DISC ASSEMBLY, SPINNER, 18" CW, 304 SST
00099400-C DISC ASSEMBLY, SPIPNNER, 18" CW, AR

Item	Qty	Part Number	Description
1	1	00080420-A 00080420-B 00080420-D	DISC, SPINNER, 18" MS DISC, SPINNER, 18", 304 DISC SPINNER, 18", AR
2	6	00080425-A 00080425-B	FLITE SPINNER, MS FLITE SPINNER, SST
3	12	05010617 05016137	BOLT, .312-18 X .875, G8, HHCS, ZINC BOLT, .312-18 X .875, HHCS, SST
4	12	05020265 05020855	NUT, .312-18, G8, HEX, ZINC NUT, .312-18, G8, HEX, SST
5	12	05021364 05021407	WASHER, .312, LOCK, ZINC WASHER, .312, LOCK, SST

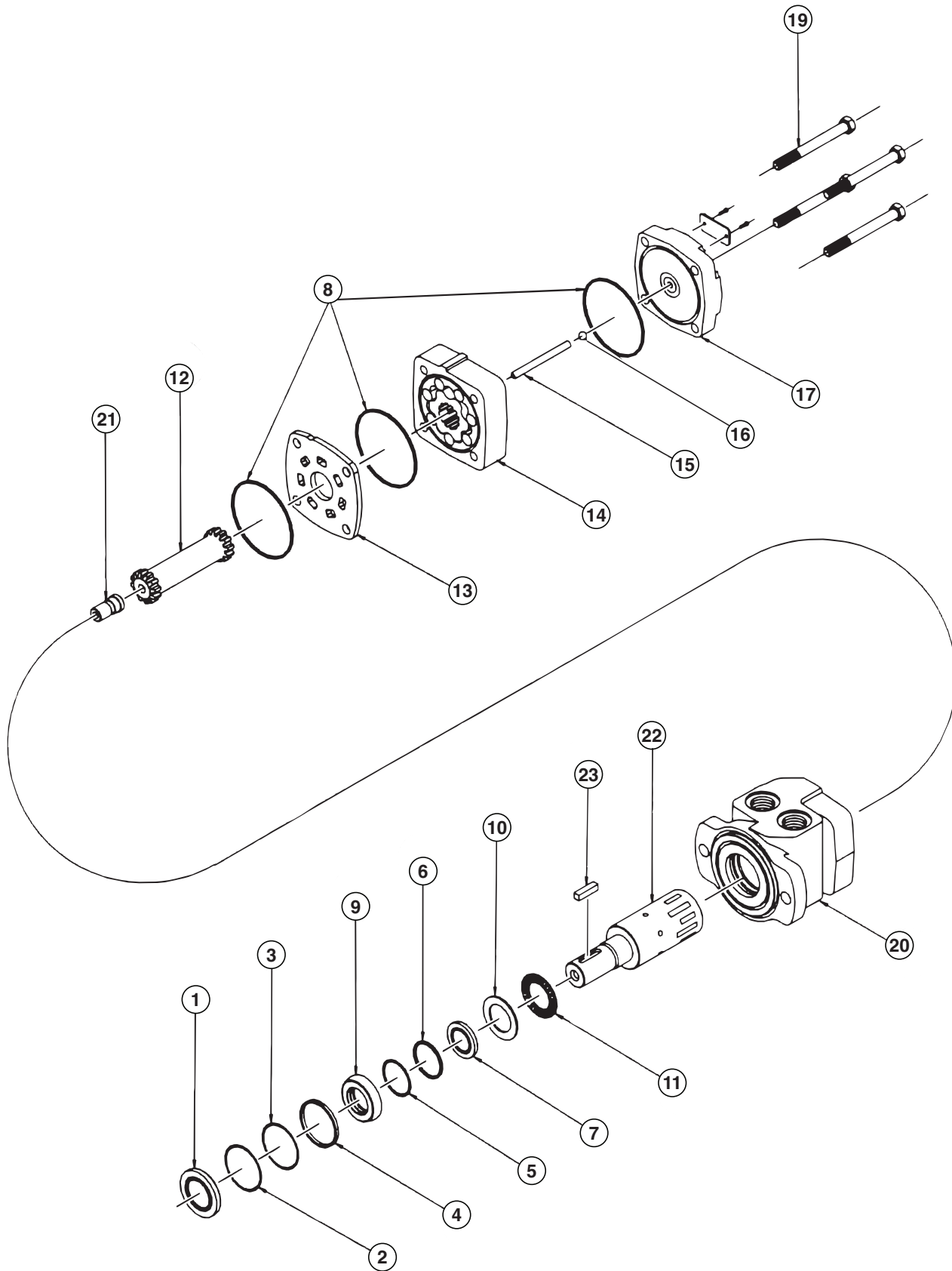
05006549 MOTOR, HYDRAULIC, WHITE, 10 CI, 4 BOLT



MOTOR ASSEMBLY PARTS LIST

Item	Part Number	Description
1	Seal Kit 05006061	Dust Seal
2		Split Wire Ring
3		Metal Backup Shim
4		High Pressure Seal
5		Metal Backup Shim
6		Teflon Backup Shim
7		Shaft Seal
8		Body Seals (3)
9		Seal Carrier
10		Thrust Washer
11	05006357	Thrust Bearing
12	05006366	Drive Link Kit
13	05006359	Wear Plate
14	05006082	Rotor Kit
15	05006081	Drive Link Pin Kit
16	---	Included in item #15 Drive Link Pin Kit
17	05006360	End Cover
18	---	Serial Number Plate
19	05006064	Bolt Set Kit
20	05006564	Housing Kit, 4-Hole, w/ 7/8" O-Ring
21	05006358	Cooling Plug
22	05006370	Shaft Kit, 1" Straight
23	05006371	Key Kit, 1" Straight

05006673 MOTOR, HYD, WHITE, 3.2CI, 4B, 1" EXT SHAFT, .875" ORB/SEAL SAVER



MOTOR ASSEMBLY PARTS LIST

Item	Part Number	Description
1	Seal Kit 05006679	Dust Seal
2		Split Wire Ring
3		Metal Backup Shim
4		High Pressure Seal
5		Metal Backup Shim
6		Teflon Backup Shim
7		Shaft Seal
8		Body Seals (3)
9		Seal Carrier
10		Thrust Washer
11	---	Thrust Bearing
12	---	Drive Link Kit
13	---	Wear Plate
14	---	Rotor Kit
15	---	Drive Link Pin Kit
16	---	Included in item #15 Drive Link Pin Kit
17	---	End Cover
18	---	Serial Number Plate
19	---	Bolt Set Kit
20	05006564	Housing Kit, 4-Hole, w/ 7/8" O-Ring
21	---	Cooling Plug
22	05006410	Shaft Kit 1" Straight Speed Sensor
23	---	Key Kit, 1" Straight

00098541 QUICK DROP TAILGATE MOUNTING KIT

Item	Qty	Part Number	Description
1	2	00098540	PIN WELDMENT, RT/RTS, QUICK DROP TAILGATE
2	2	00029799	BRACKET, MOUNTING, RT, QUICK DROP TGT
3	2	05010618	BOLT, .313-18 X 1, G8, HHCS, ZINC
4	2	05020909	NUT, .313-18, GC, TOP LOCK, C&W
5	1	05050272	CARDBOARD BOX

HOW TO ORDER PARTS

To order or inquire about replacement parts, please contact the distributor or store that the product was purchased through. To speed the information flow, please have the follow information ready:

- Model Number
- Serial Number
- Part Number and/or description as per the parts manual
- Quantity needed

For further information about **Monroe Truck Equipment** replacement parts, please call 800-880-0109 and ask for **Snow & Ice Parts Sales**.

RETURN POLICY

Merchandise returned to **Monroe Truck Equipment** must have a Warranty Service Request (WSR) form filled out completely and signed by authorized personnel. To get your WSR form, call 800-880-0109. For whole goods, ask for **Snow & Ice Sales**. For replacement parts, ask for **Snow & Ice Parts Sales**. All returned items are subject to a 15% restocking fee and must be sent freight prepaid!

MONROE TRUCK EQUIPMENT, INC. WARRANTY SNOW & ICE CONTROL PRODUCTS

Monroe Truck Equipment, Inc. warrants to the original purchaser, that if any part of the product proves to be defective in workmanship or material within **ONE YEAR** of the original installation, and is returned to us within 30 days of the discovered defect, we will (at our option) repair or replace the defective part. This warranty does not apply to damage resulting from misuse, neglect, accident, improper installation, normal wear items or lack of maintenance. This warranty is exclusive and supersedes all other warranties, whether expressed or implied. **Monroe Truck Equipment, Inc.** neither assumes, nor authorizes anyone to assume for it, any other obligation or liability in connection with this warranty and will not be liable for consequential damages.

All engines, pumps, motors, cylinders and valves are warranted by their manufacturer and not by **Monroe Truck Equipment, Inc.**. The manufacturer's warranty will apply to these parts. Electrical and hydraulic components are not to be disassembled without the express written permission of Monroe Truck Equipment. Use of replacement parts other than original equipment voids this warranty.

All defective parts returned must be accompanied by the model number, serial number, date installed, date of defect, description of defect, and the name of the distributor from whom it was purchased. All warranty claims must have prior written approval from **Monroe Truck Equipment, Inc.**

Please return the warranty registration card that accompanies this manual to confirm receipt of this parts catalog and acknowledge the information contained within. Failure to return the attached card may result in a voided warranty.



1051 West 7th Street
Monroe, WI 53566
608-328-8127 ~ Fax: 608-328-4278

Warranty Policy

Uninstalled Parts and Equipment Provided by Monroe Truck Equipment

Monroe Truck Equipment will provide the following limited warranty for a period of one year to the original purchaser of all uninstalled goods provided by Monroe Truck Equipment:

LIMITED WARRANTY: All goods provided by Monroe Truck Equipment (MTE) will be free from defects in material and workmanship for a period of one year from the date of purchase by the original purchaser. This limited warranty shall be the sole and exclusive remedy for any such product found to be defective. This limited warranty supercedes all previous warranties and is exclusive and in lieu of all other warranties, whether expressed or implied.

This limited warranty applies only to parts or accessories manufactured by MTE and/or provided by same. Except with respect to title, this limited warranty does not pertain to parts or accessories not manufactured and/or provided by MTE, regardless of whether such parts or accessories were selected and/or recommended by MTE. MTE will, as a service to the buyer, pass on any warranties received from the original manufacturer of MTE provided parts and/or accessories.

MTE will not under any circumstances be liable for any incidental or consequential damages whether in tort, contract, or otherwise, for any bodily injury, death, property damage, loss of use, or loss of income resulting from or in any way arising out of any goods provided by MTE, or their sale, use, or manufacture.

Any warranty claim deemed to be arising from the result of misuse, abuse, neglect, accident, improper installation, lack of maintenance, act of war (whether declared or otherwise), or act of God will be denied. Any repair or modification by the buyer or any third party, without the prior written consent of MTE, will void any possible warranty compensation. Any damage deemed to be the result of abnormal operation will not be compensated by this warranty.

Normal or special maintenance items such as fuels, fluids, tires, belts, hoses, filters, air cleaners, light bulbs, and any other items subject to normal wear and tear that are supplied in connection with goods provided by MTE are not allowed under this warranty.

All engines, pumps, cylinders, valves, and motors are warranted by their manufacturer and not by Monroe Truck Equipment. The manufacturer's warranty will apply to these parts. Electrical and hydraulic components are not to be disassembled without the express written consent of MTE. Any disassembly of MTE provided components without prior authorization will void the applicable warranty.

Monroe Truck Equipment shall be the sole and final determining authority as it applies to the administration of this warranty policy. Purchaser acknowledges receipt of Monroe Truck Equipment Warranty Policy and agrees to be bound by same.



GLOBAL SOLUTIONS
ARMORED VEHICLES ~ SPORT TRUCK CONVERSIONS
MUNICIPAL SNOW & ICE CONTROL ~ FIRE APPARATUS
PICKUP TRUCK ACCESSORIES ~ TRUCK EQUIPMENT/MODIFICATIONS





1051 West 7th Street
Monroe, WI 53566
608-328-8127 ~ Fax: 608-328-4278

Any and all warranty claims must be forwarded to MTE within 10 days of defect discovery. A copy of the original Monroe Truck Equipment invoice as well as the manufacturer's model number, serial number, and date of installation must accompany all correspondence regarding said claims. MTE will, at their option, choose whether to repair or replace the defective part unless otherwise specified by the original manufacturer of said part.

Procedures for Warranty Claims Notification

For submission of any warranty claim please contact Monroe Truck Equipment – Warranty Department at 800-356-8134

The following documentation will be needed when you call for initial warranty authorization:

1. A copy of the original MTE invoice.
2. Make, Model, and VIN or Serial Number of the equipment involved.
3. Part number and serial number of the part in question.
4. A complete description of the problem.

The following must accompany any claim submitted to Monroe Truck Equipment:

1. Documented photographs of any physical damage.
2. Inspection notes by MTE personnel or MTE authorized 3rd party.
3. Authorization number issued by Monroe Truck Equipment – Warranty Department.

Defective parts must be returned to Monroe Truck Equipment (freight prepaid) within 30 days of issuance of Authorization Number.

Monroe Truck Equipment reserves the right to void any warranty for failure to comply with Monroe Truck Equipment Warranty Policy.

This policy is effective October 11, 2012

