



# **PLOW, DT, DUAL TRIP**

## **Service and Parts Manual**



### **Monroe Snow & Ice Control**

*A Division of Monroe Truck Equipment*

1051 W. 7th Street

Monroe, WI 53566

Phone: 608-328-8127

Fax: 608-329-8488

Website: [www.monroetruck.com](http://www.monroetruck.com)

Email: [snowandicecontrol@monroetruck.com](mailto:snowandicecontrol@monroetruck.com)



# TABLE OF CONTENTS

<b>SAFETY INSTRUCTIONS.....</b>	<b>Page 2</b>
<b>MAINTENANCE INSTRUCTIONS .....</b>	<b>Page 3</b>
<b>GENERAL INFORMATION.....</b>	<b>Page 4</b>
<b>HYDRAULIC DIAGRAMS.....</b>	<b>Page 5</b>
<b>REPLACEMENT PARTS.....</b>	<b>Page 6-18</b>
<b>WARRANTY INFORMATION .....</b>	<b>Page 19-21</b>

## SAFETY INSTRUCTIONS

- Read all installation, safety and maintenance instructions completely before operating this equipment
- Keep all personnel clear of moving parts while equipment is being operated.
- Do not operate equipment in need of maintenance! Repair immediately!
- While operating this equipment, use common sense, use caution, be alert and be safety-conscious.



**! DANGER**

**AVOID HIGH-PRESSURE FLUIDS**

Escaping fluid under pressure can penetrate the skin causing serious injury.

Avoid the hazard by relieving pressure before disconnecting hydraulic or other lines. Tighten all connections before applying pressure.

Search for leaks with a piece of cardboard. Protect hands and body from high pressure fluids.

If an accident occurs, see a doctor immediately. Any fluid injected into the skin must be surgically removed within a few hours or gangrene may result.



**CAUTION:** *“Stacking” (piling) of snow with a push plow is not recommended.*

***Raising the plow too high while stacking can damage the plow and mount by causing the lift arm to fold up and contact the moldboard.***

***Do not lift the plow more than 18” off the ground with piling and stacking snow.***

***Where possible, start the snow season by pushing snow as far back as possible from the area begin plowed to avoid having to move or stack it later.***

# MAINTENANCE INSTRUCTIONS

## In Season:

- Check for loose bolts and nuts daily, and re-torque before use. (Failure to inspect equipment on a daily basis may seriously affect safety and/or efficiency.)
- Lubricate all grease fittings every ten hours of normal use and more frequently under heavy use.
- A cross over relief valve (1800 PSI) MUST be plumbed into the reversing circuit.
- Check all hydraulic fittings for tightness on a regular basis.
- System pressure should NOT exceed 2000 PSI.
- Check cutting edge for wear. Do not let cutting edge wear closer than  $\frac{1}{2}$ " to  $\frac{3}{8}$ " from the bottom angle of the moldboard.
- Due to the nature of use and environment this equipment is operating in, damage and wear may occur at anytime. Therefore, **Monroe Truck Equipment** recommends the end user establish and follow a daily inspection routine before using this equipment.

## Off Season:

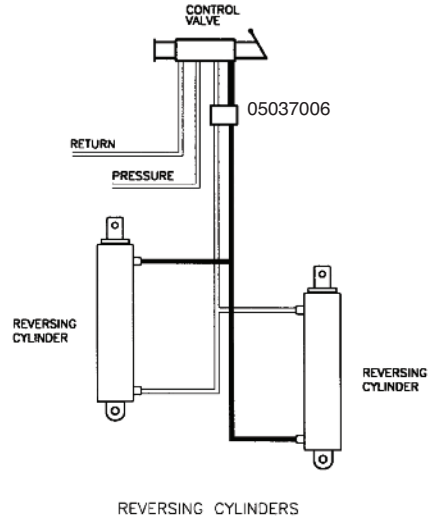
- Use care when disconnecting hydraulic lines to assure that no dirt or foreign objects enter the hydraulic system. Use caps to cover hydraulic hose fittings and insert plugs in hydraulic ports.
- Hydraulic cylinders should be fully retracted when stored during the off season to prevent damage or corrosion. The remaining exposed shaft surface should be coated with a thick grease to prevent corrosion, which must be removed before returning to regular service.
- Check mounting bolts for wear and/or damaged threads and replace before next season.

## GENERAL INFORMATION

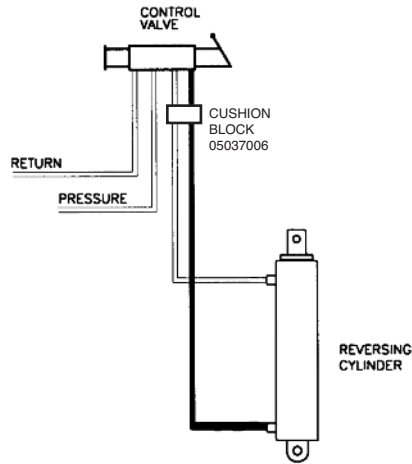
- Location descriptions are noted in direction of travel. (i.e. front, rear, left and right.)
- Delivery of replacement parts is subject to our sales delivery terms.
- Use only **Monroe Snow & Ice Control** O.E.M. replacement parts. Failure to do so will void warranty.
- Replacement parts listed in this manual reflect our most common items. If you do not find the part you require, please call your distributor.
- **Monroe Truck Equipment** reserves the right to make revisions or alterations to this parts manual.
- Monroe Full Moldboard Compression Trip Reversible plows are designed to operate with a 14” push height when equipped with the standard 8” cutting edge. Changes in cutting edge height will require adjustments at the hitch to maintain optimum attach angle.
- Monroe Full Moldboard Compression Trip Reversible plows are designed for use with a variety of hitches. Please consult the operating manual for your hitch to determine the correct attachment procedure.

# HYDRAULIC DIAGRAMS

## Hydraulic Diagram for the Reversing Cylinders



## Single Reversing Cylinder



**00055629 PLOW, MP44R11-ISDT, 10GA, 8RIB, DUAL TRIP, TT EDGE**

Item	Qty.	Part Number	Description
1	1	00104997	MLDBD ASSY,PLOW,MP44R11-ISDT,10GA <i>See page 7</i>
2	1	00055931	CE KIT,11',.75x6,CARBIDE,TPCS,COV <i>See page 8</i>
3	1	00050926	REVERSING KIT,PLOW,3x10 CYL <i>See page 9</i>
4	1	00107506	PUSHFRAME KIT,RVS,39&44DT,9'-12' <i>See page 11</i>
5	1	00080105	TRIP KIT,PLOW,DUAL TRIP,HD <i>See page 13</i>
6	1	05050095	TAG,SERIAL NUMBER,STANDARD
7	1	00055962	DECAL KIT,PLOW <i>See page 14</i>
8	1	05090227	MANUAL,PLOW,DT,DUAL TRIP

**00157743 PLOW, MP44R12-ISDT-MB1, 10GA, 12 X 20 RH, 5" TUBE**

ITEM	QTY	PART NUMBER	DESCRIPTION
1	1	00157336	MLDBD ASSY,PLOW,MP44R12-ISTT- <i>See page 7</i>
2	1	00049754	CE KIT,12',.625 x 8.000,TPCSK <i>See page 8</i>
3	1	00110870	REVERSING KIT,PLOW,3x15 CYL, <i>See page 10</i>
4	1	00128418	PUSHFRAME KIT,RVS,TE,10'-12',4 <i>See page 12</i>
5	1	00080105	TRIP KIT,PLOW,DUAL TRIP,HD <i>See page 13</i>
6	1	05050095	TAG,SERIAL NUMBER,STANDARD
7	1	00055962	DECAL KIT,PLOW/WING <i>See page 14</i>
8	1	05090227	MANUAL,PLOW,DUAL TRIP

**00157742 PLOW, MP44R11-ISDT-MB1, 10GA, 12 X 20 RH, 5" TUBE**

ITEM	QTY	PART NUMBER	DESCRIPTION
1	1	00157334	MLDBD ASSY,PLOW,MP44R11-ISTT- <i>See page 7</i>
2	1	00049753	CE KIT,11',.625 x 8.000,TPCSK <i>See page 8</i>
3	1	00110870	REVERSING KIT,PLOW,3x15 CYL, <i>See page 10</i>
4	1	00128418	PUSHFRAME KIT,RVS,TE,10'-12',4 <i>See page 12</i>
5	1	00080105	TRIP KIT,PLOW,DUAL TRIP,HD <i>See page 13</i>
6	1	05050095	TAG,SERIAL NUMBER,STANDARD
7	1	00055962	DECAL KIT,PLOW/WING <i>See page 14</i>
8	1	05090227	MANUAL,PLOW,DUAL TRIP



**00104997 MOLDBOARD ASSEMBLY, PLOW, MP44R11-ISDT, 10GA**

Item	Qty.	Part Number	Description
1	1	00104998	MLDBD WLDMT,PLOW,MP44R11-ISDT,10GA
2	1	00094753	ROD,PIVOT,82.25" LONG
3	1	00094755	ROD,PIVOT,44.25" LONG
4	2	00037985	TRIP EDGE WLDMT,4'
5	1	00037984	TRIP EDGE WLDMT,3'
6	2	05022039	PIN .313 x 2.00 ROLL
7	2	05021191	BUSHING 1.250 MACHINE ZC

**00157334 MOLDBOARD ASSEMBLY, PLOW, MP44R11-ISTT**

ITEM	QTY	PART NUMBER	DESCRIPTION
1	1	00157335	MLDBD WLDMT,PLOW,MP44R11-ISTT,
2	2	00130527	TRIP EDGE WLDMT,PLOW,4'
3	1	00130526	TRIP EDGE WLDMT,PLOW,3'
4	1	00150541	PIN,1.938DIAx28.00,NO HEAD
5	4	00149624	PIN,1.938DIAx16.00,NO HEAD
6			
7	6	05035110	SPRING,TORSION,.750 SQ WIRE
8	4	00054787	PIN,1.25 x 3.875,NO HEAD
9	12	05021191	BUSHING,MACH,1.88x1.25x14GA,ZC
10	12	05022039	PIN, ROLL .313 x 2.000 OA
11	11	05010749	BOLT .625-11 x 5.00 G8 HHCS ZC
12	22	05021017	WASHER .625 FLAT MIL-CARB SAE
13	11	05020837	NUT .625-11 GC TOPLOCK C&W
14	2	00144195	PIN,1.25 x 7.750 NO HEAD

**00157336 MOLDBOARD ASSEMBLY, PLOW, MP44R12-ISTT**

ITEM	QTY	PART NUMBER	DESCRIPTION
1	1	00157337	MLDBD WLSMT,PLOW,MP44R12-ISTT-
2			
3	3	00130527	TRIP EDGE WLDMT,PLOW,4'
4	5	00054787	PIN 1.25 x 3.875,NO HEAD
5	14	05021191	BUSHING,MACH,1.88x1.25x14GA,ZC
6	14	05022039	PIN, ROLL .313 x 2.000 OA
7	2	00144195	PIN 1.25 x 7.750 NO HEAD
8	6	00149624	PIN 1.938DIAx16.00,NO HEAD
9			
10	12	05010749	BOLT .625-11 x 5.00 G8 HHCS ZC
11	24	05021017	WASHER .625 FLAT MIL-CARB SAE
12	12	05020837	NUT .625-11 GC TOPLOCK C&W
13	6	05035110	SPRING,TORSION,.750 SQ WIRE

**00055931 CUTTING EDGE KIT, 11', .75 X 6, CARBIDE, TPCS, COV, (1) 3' SEC, (2) 4' SECT**

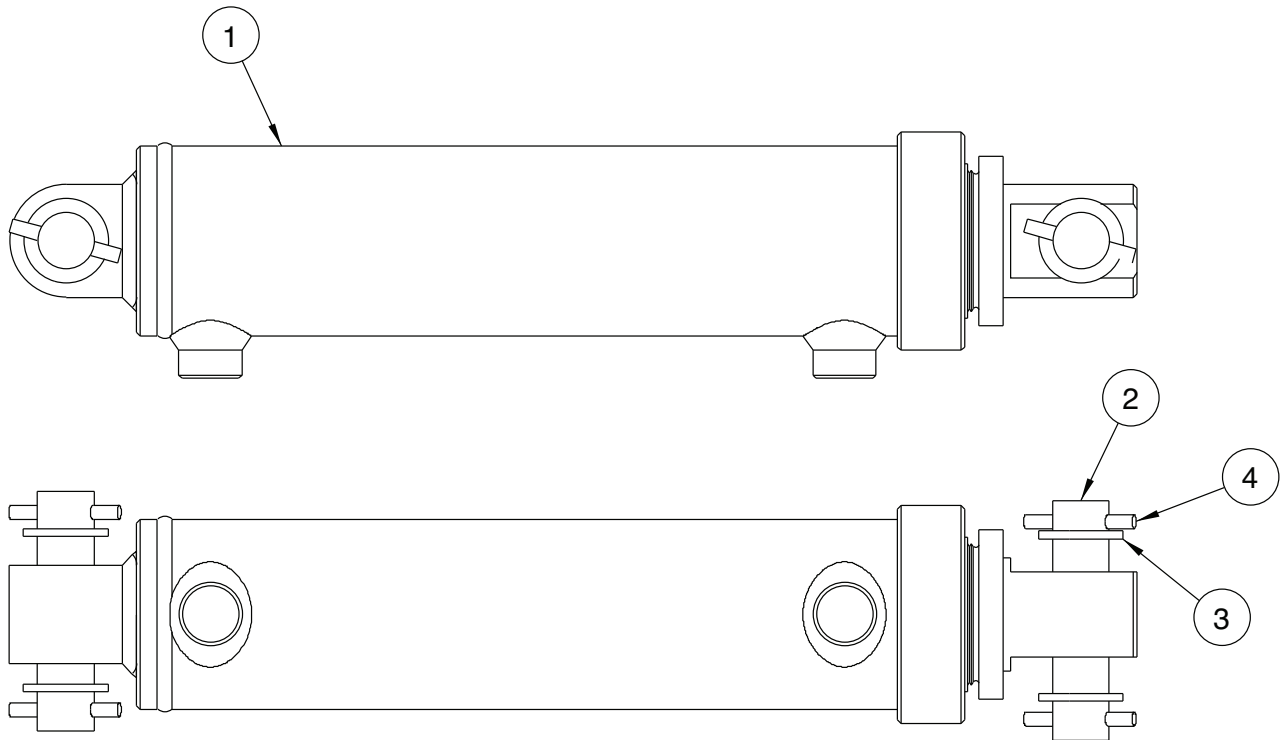
Item	Qty.	Part Number	Description
1	1	05031082	CUTTING EDGE,.75x6x3',1020,CBD
2	2	05031083	CUTTING EDGE,.75x6x4',1020,CBD
3	1	05031031	CUTTING EDGE,.5x6x11',1084
4	4	05014553	BOLT .625-11 x 3.00 DH PLN
5	17	05021383	WASHER .625 LOCK HVY ZC
6	17	05020270	NUT .625-11 G8 HEX ZC
7	13	05014555	BOLT .625-11 x 3.50 DH PLN

**00049753 CUTTING EDGE KIT, 11', .625 X 8, TPCSK**

ITEM	QTY	PART NUMBER	DESCRIPTION
1	1	05031013	CUTTING EDGE,.625x8x11',1084
2	13	05014551	BOLT .625-11 x 2.50 G8 DH PLN
3	13	05021383	WASHER .625 LOCK HVY ZC
4	13	05020270	NUT .625-11 G8 HEX ZC

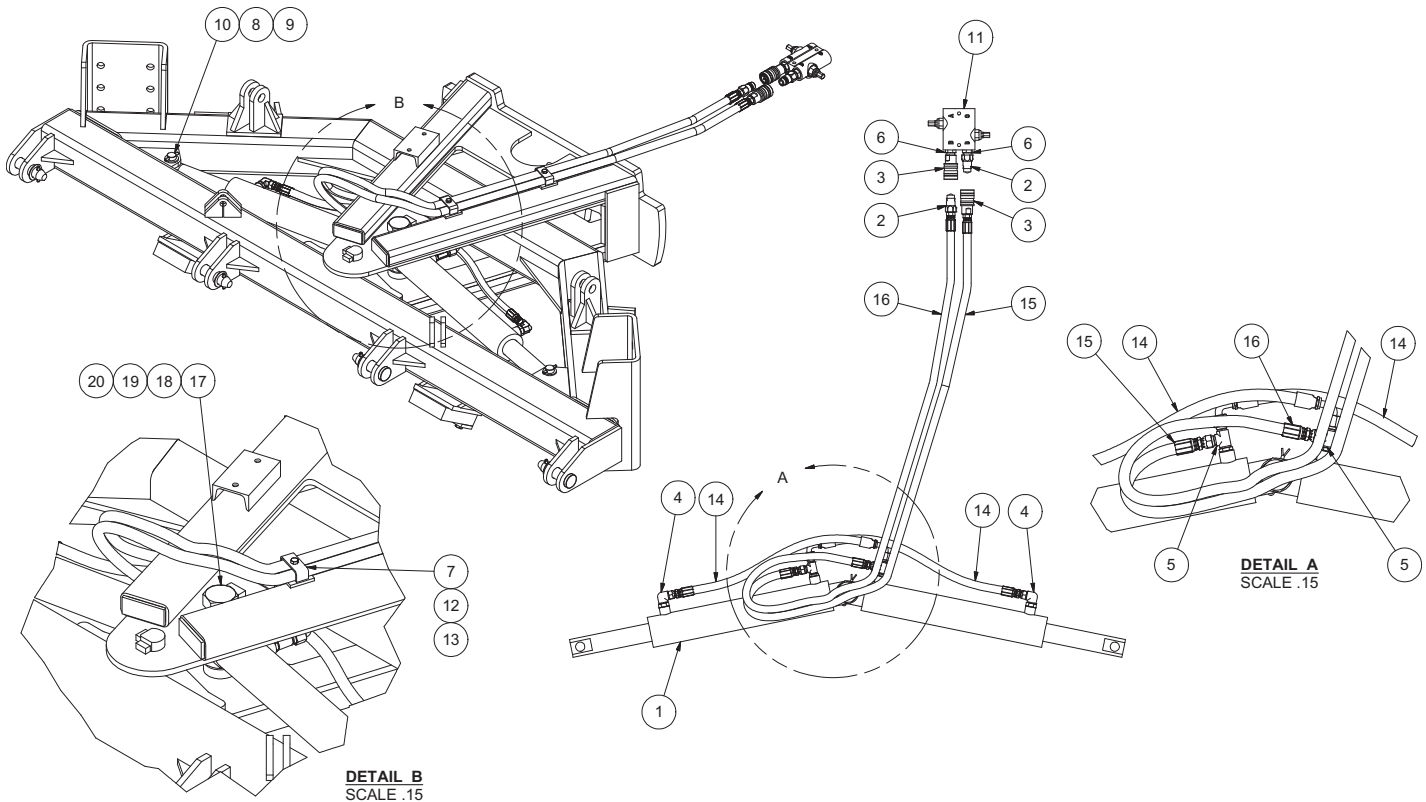
**00049754 CUTTING EDGE KIT, 12', .625 X 8, TPSC**

ITEM	QTY	PART NUMBER	DESCRIPTION
1	1	05031014	CUTTING EDGE,.625x8x12',1084
2	14	05014551	BOLT .625-11 x 2.50 G8 DH PLN
3	14	05021383	WASHER .625 LOCK HVY ZC
4	14	05020270	NUT .625-11 G8 HEX ZC



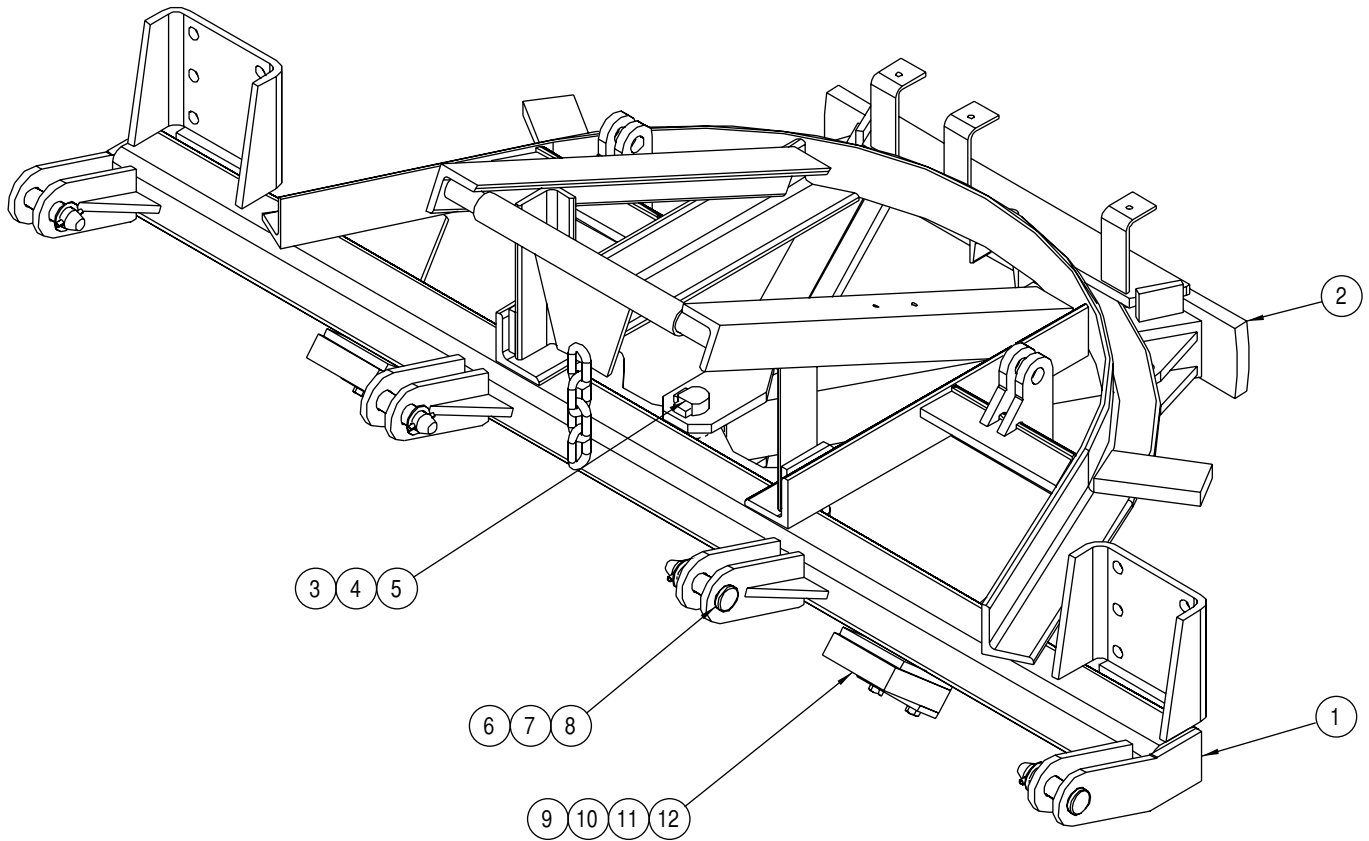
**00050926 REVERSING KIT, PLOW, 3 X 10 CYLINDER WITH MOUNTING**

Item	Qty	Part Number	Description
1	2	05000000	CYLINDER, 3 X 10 DA, LIFT PA, ORB PORTS <i>See page 15</i>
2	4	05022040	PIN, 1 X 4.250 NO HEAD
3	8	05021202	BUSHING, 1.50 X 1 X 10 GA, ZINC, NARROW
4	8	05022026	PIN, .250 X 2, ROLL, ZINC
5	1	05043067	HOSE KIT, CUSHION BLOCK
6	1	05037080	HOSE ASSEMBLY, PLOW
7	3	00055000	CLIP, HOSE HOLD DOWN
8	3	05010620	BOLT, .313-18 X 1.5, G8, HHCS, ZINC
9	3	05020909	NUT, .313-18, GC, TOP LOCK, C&W



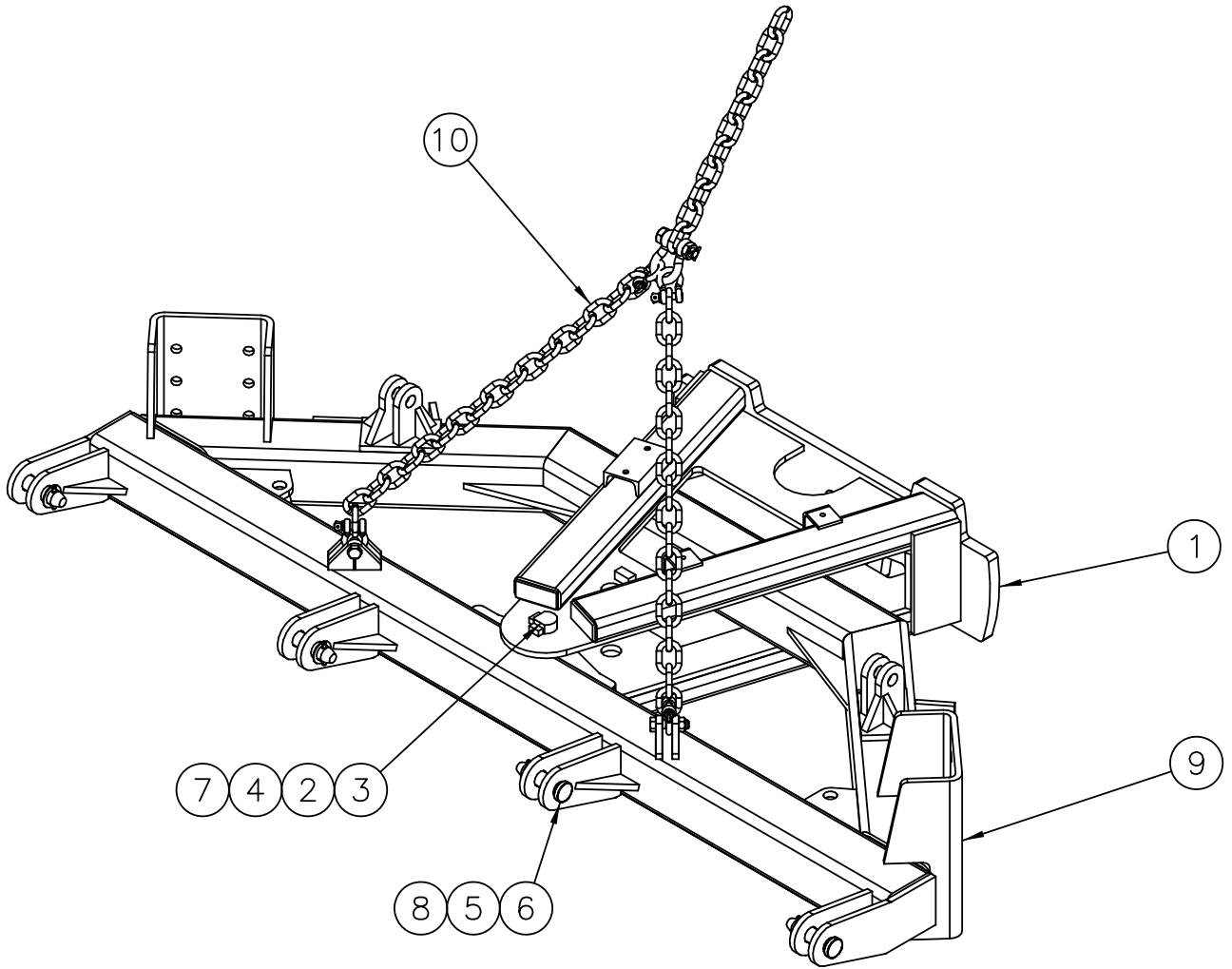
**00110870 REVERSING KIT, PLOW, 3 X 15 CYL, NIT, HD 5" PUSHFRAME**

Item	Qty.	Part Number	Description	
1	2	00121641	CYLINDER,3x15,DA,FOR UPA-FULL	<i>See page 16</i>
2	2	05037297	FITTING,COUPLING,HYD,.5"MNPT	
3	2	05037298	FITTING,COUPLING,HYD,.5"FNPT	
4	2	6801-8-10	HYD FITNG,ADAPTER 90	
5	2	6804-8-10-8	HYD FITNG,TEE	
6	2	6401-10-8	HYD FITTING,7/8 ORB x 1/2	
7	2	00055000	CLIP,HOSE HOLD DOWN,REVERSIBLE	
8	4	05022026	PIN .250 x 2.000 OA,ROLL	
9	4	05021202	BUSHING 1.50x1.00x10GA ZC	
10	2	05022040	PIN 1.000 x 4.250 NO HEAD	
11	1	05043066	VALVE,CUSHION,.875-14ORB,30GPM	
12	2	05010620	BOLT .313-18 x 1.50 G8 HHCS ZC	
13	2	05020909	NUT .313-18 GC TOPLOCK C&W	
14	2	05044067	HOSE ASSY,.5"ID,26"OAL,2WIRE	
15	1	05044068	HOSE ASSY,.5"ID,91"OAL,2WIRE,	
16	1	05044069	HOSE ASSY,.5"ID,99"OAL,2WIRE,	
17	1	00121642	BOLT MOD,1.50-6x8.00,.250 HOLE	
18	1	05020401	NUT 1.50-6 G2 SLHEX ZC	
19	1	05022005	PIN .250 x 3.000 COTTER	
20	2	00110867	BUSHING 2.50 ODx1.563 IDx.812	



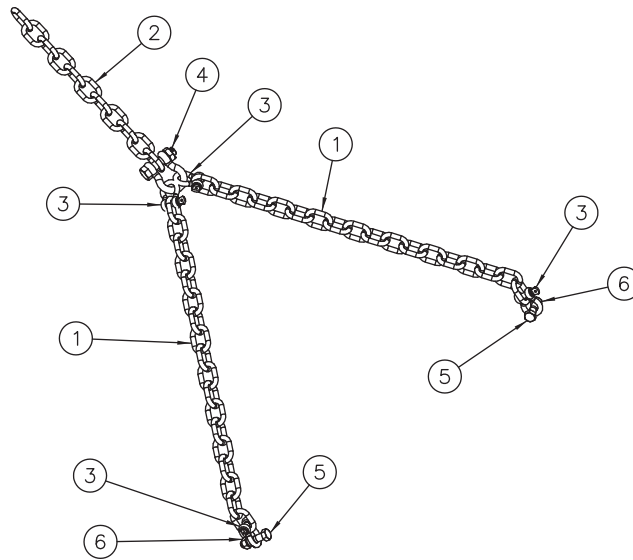
**00107506 PUSHFRAME KIT, RVS, 39 & 44 DT, 9'-12'**

Item	Qty.	Part Number	Description
1	1	00107507	PUSHFRAME WLDMT,RVS,39&44DT,9'-12'
2	1	00027881	A-FRAME WLDMT,STD,1.25 PIVOT
3	1	05022047	PIN 1.250 x 7.25 FLAT HD
4	1	05022044	PIN .313 x 3.000 ROLL
5	1	05021316	WASHER 1.25 FLAT ZC
6	4	05022067	PIN 1.25 DIA x 4.50 FLAT HD
7	4	05022039	PIN .313 x 2.000 ROLL
8	4	05021191	BUSHING 1.250 MACHINE ZC
9	2	05051480	BUMPER,PLOW,1.50 x 5.00 x 6.00 RUBBER
10	2	00020722	BUMPER RETAINER
11	4	05010697	BOLT .500-13 x 3.000 G8 HHCS ZC
12	4	05020847	NUT .500-13 GC TOPLOCK C&W



**00128418 PUSHFRAME KIT, RVS, TE, 10'-12'**

ITEM	QTY	PART NUMBER	DESCRIPTION
1	1	00110863	A-FRAME WLDMT,HD,TUBE STYLE
2	2	00110868	BUSHING 2.250 ODx1.313 IDx.688
3	1	00066021	PIN 1.25 x 8.250 FLAT HD
4	1	05021316	WASHER 1.25 FLAT ZC
5	4	05021191	BUSHING,MACH,1.88x1.25x14GA,ZC,NARROW RIM
6	4	05022067	PIN 1.242 4.835 FLAT HD ZC,GRIP 3.370
7	1	05022044	PIN .313 x 3.000 ROLL ZC,CARBON SPRING STEEL
8	4	05022039	PIN .313 x 2.000 ROLL ZC,CARBON SPRING STEEL
9	1	00110851	PUSHFRAME WLDMT,RVS,TE,10'-12',4 ATCH,HD,5.0 TUBE STYLE
10	1	00128419	LIFT KIT,PLOW,3 CHAIN,MONROE TRUCK EQUIP. <i>See page 13</i>



00128419 LIFT KIT			
ITEM	QTY	PART NUMBER	DESCRIPTION
1	2	00018384	CHAIN,.375x 1.52',ALLOY,GR80
2	1	00018385	CHAIN,.500x18",TRANSPORT,GR70
3	4	05052860	SHACKLE,.438,SCREW PIN,ANCHOR
4	1	05050126	SHACKLE,.625,BOLT-TYPE,GALV
5	2	05010741	BOLT .625-11 x 2.50 G8 HHCS Z
6	2	05020837	NUT .625-11 GC TOPLOCK C&W

00080105 TRIP KIT,PLOW,DUAL TRIP,HD			
Item	Qty.	Part Number	Description
1	2	00041389	SPRING ASSY,PLOW,DUAL TRIP,HD <i>See below</i>
2	4	05022051	PIN 1.00 x 3.25 FLAT HD,W/HOLE
3	4	05021202	BUSHING,MACH,1.5x1x10GA,ZC
4	4	05022026	PIN .250 x 2.000 ROLL ZC

00041389 SPRING ASSY, PLOW, DUAL TRIP HD SPRING			
Item	Qty.	Part Number	Description
1	1	00040164	TRIP ARM WLDMT,PLOW,CT,INNER
2	1	00104987	TRIP ARM WLDMT,PLOW,CT,OUTER
3	2	00040167	RETAINER,SPRING STOP
4	1	05035037	SPRING,COMP,TRIP,5.313 OD
5	1	05010741	BOLT .625-11 x 2.50 HHCS G8 ZC
6	1	05020837	NUT .625-11 GC TOPLOCK C&W



**WARNING**

Possible serious injury and equipment damage from loosening of equipment fasteners. Fasteners on snow and ice removal equipment may loosen due to vibration and repetitive movements.

Retighten all equipment mounting fasteners after the first 8 hours of use, then check tightness weekly after that. Use a torque wrench when specific torque values are given in the installation manual.

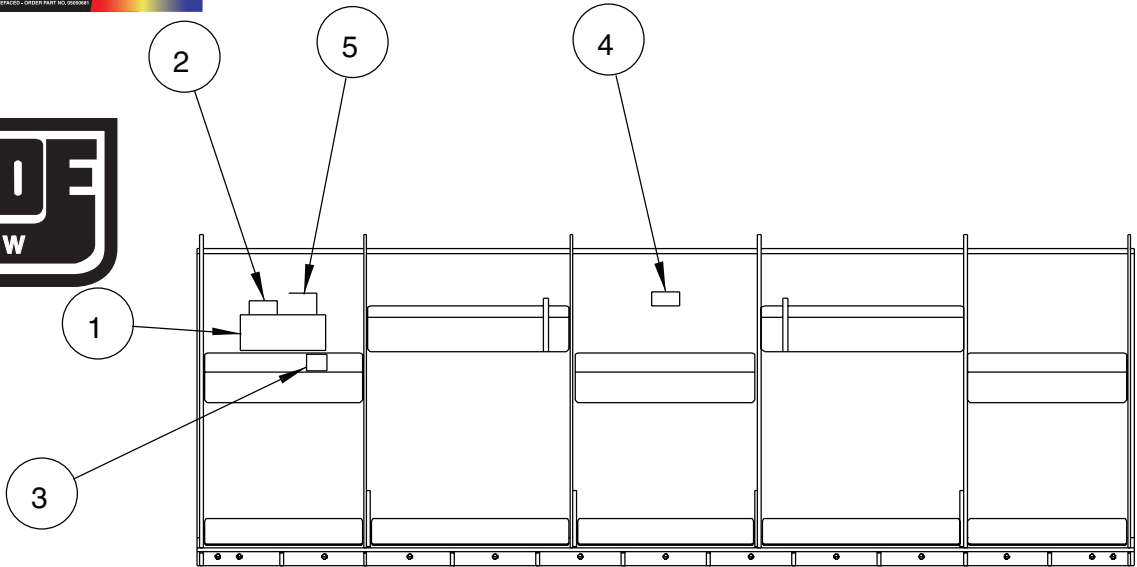
If fasteners need to be replaced, be certain to use the correct size, grade and type to prevent failure.

05052628

**WARNING**

Springs under tension! If spring releases while performing maintenance, serious injury or death could result. Use caution when working in area.

IF DEFACED - ORDER PART NO. 05052547



**MONROE**  
SNOW & ICE CONTROL

**QUALITY CHECK**

Inspected by:

\_\_\_\_\_

\_\_\_\_\_

\_\_\_\_\_

\_\_\_\_\_

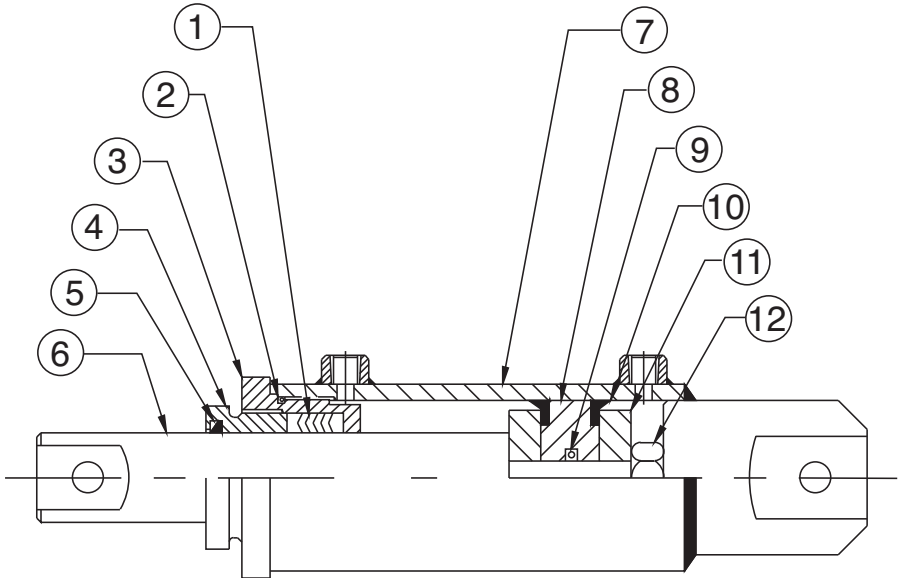
1 0505231

00055962 DECAL KIT, PLOW			
Item	Qty.	Part Number	Description
1	1	05051507	DECAL,MONROE SNOWPLOW,12x5
2	1	05050681	DECAL,4" x2",BONDED POWDER
3	1	05052311	DECAL,4" X 3" QUALITY CHECK
4	1	05052547	DECAL,WARNING SPRINGS UNDER TENSION
5	1	05052628	DECAL,WARNING,TIGHTEN FASTENERS

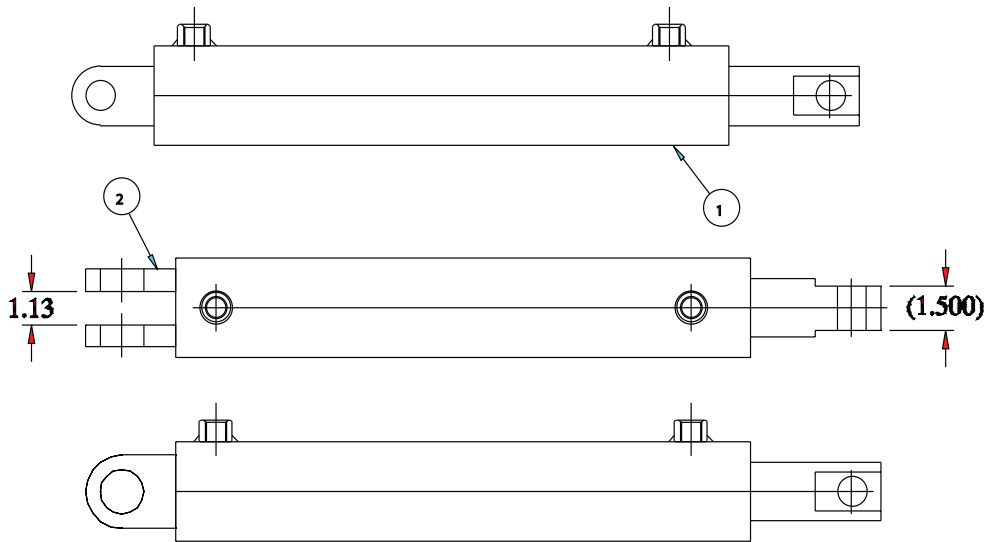


**05000000 CYLINDER, 3 X 10, DA, NITRIDED ROD & POLY PAK**

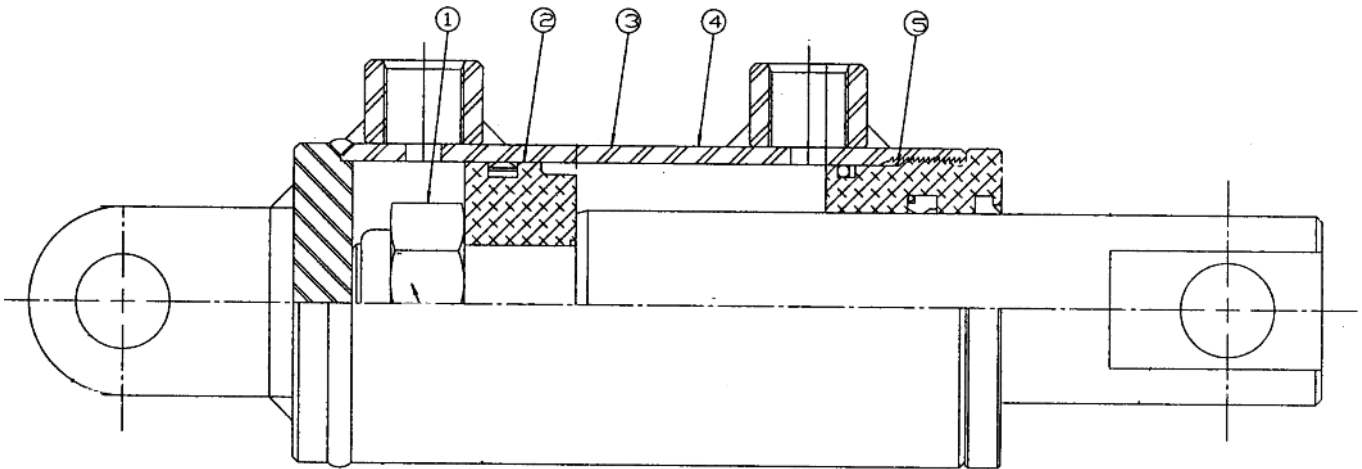
<i>BEST METAL</i>	ITEM	QTY	PART #	DESCRIPTION
	1	1	05000001	PACKING SET
	2	1	05000002	O-RING
	3	1	05000006	BOX
	4	1	05000007	NUT
	5	1	05000003	WIPER
	6	1	05000008	ROD
	7	1	05000014	TUBE
	8	1	05000010	PISTON
	9	1	05000004	O-RING
	10	2	05000005	CUP
	11	2	05000011	FOLLOWER
	12	1	05000012	NUT
	13	1	05000013	SEAL KIT



**00121641 CYLINDER 3X15 DA**



1. Cut off the 2 attachment ears that come with cylinder
2. Weld Item #2, PN: 00121640, Qty 2 Ear Mounting 1.531 DIA to Item #1, PN: 05002280, Qty 1, Cylinder 3 x 15 DA, for UPA-Full Trip

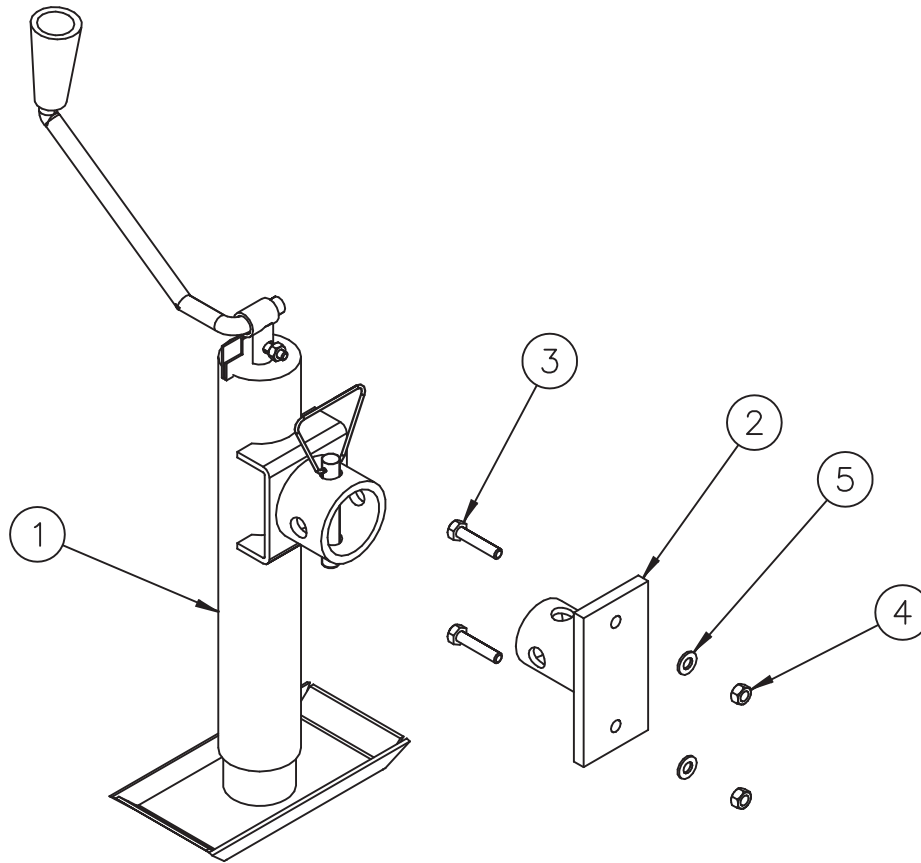


**05002280 CYLINDER, 3 X 15, DA, DF, NIT ROD**

Item	Qty	Part Number	Description
1	1	05000022	Lock Nut, 1¼-12
2	1	05002281	Piston, UNI
3	1	05002282	Case Weldment
4	1	05002006	Rod
5	1	05002012	Head Int. Thd.
6	2	05002283	Port Plug, #10SA
7	---	---	Black Enamel Paint
8	1	05002007	Seal Kit

**00043104 DEFLECTOR KIT, SNOW, 11' RUBBER**

<b>Item</b>	<b>Qty</b>	<b>Part Number</b>	<b>Description</b>
1	1	05051423	BELTING, RUBBER SNOW
2	1	00020752	STRIP, BACKING, RSD-I, 11'
3	15	05010620	BOLT, .313-18 X 1.50, G8, HHCS, ZINC
4	15	05020606	NUT, .313-18, G2, SPINLOCK, ZINC



10" TRAVEL  
5000# CAP

### 00061212 JACK KIT, PARKING, TOP WIND, TUBE MOUNT

Item	Qty	Part Number	Description
1	1	05050227	JACK ASSEMBLY, TOP WIND, TUBE MOUNT
2	2	00084491	MOUNT WELDMENT, JACK, TOP WIND
3	4	05010620	BOLT, .313-18 X 1.50, G8, HHCS, ZINC
4	4	05020909	NUT, .313-18, GC, TOP LOCK, C&W
5	4	05021306	WASHER, .313, FLAT, ZINC

# Snow & Ice Control Product Warranty

---



1051 W. 7<sup>th</sup> Street • Monroe, WI 53566  
800-880-0109 • 608-329-8105 • FAX 608-328-8390  
E-mail: [snowandicecontrol@monroetruck.com](mailto:snowandicecontrol@monroetruck.com) • Website: [www.monroetruck.com](http://www.monroetruck.com)

## MONROE TRUCK EQUIPMENT, INC. WARRANTY & ICE CONTROL PRODUCTS

**Monroe Truck Equipment, Inc.** warrants to the original purchaser, that if any part of the product proves to be defective in workmanship or material with **1 YEAR** of the original installation, and is returned to us with 30 days of the discovered defect, we will (at our option) repair or replace the defective part. This warranty does not apply to damage resulting from misuse, neglect, accident, improper installation, normal wear items or lack of maintenance. This warranty is exclusive and supersedes all other warranties, whether expressed or implied. **Monroe Truck Equipment, Inc.** neither assumes, nor authorizes anyone to assume for it, any other obligation or liability in connection with this warranty and will not be liable for consequential damages.

All engines, pumps, motors, cylinders and valves are warranted by their manufacturer and not by **Monroe Truck Equipment, Inc.** The manufacturer's warranty will apply to these parts. Electrical and hydraulic components are not to be disassembled without the express written permission of **Monroe Truck Equipment, Inc.** Use of replacement parts other than original equipment voids this warranty.

All defective parts returned must be accompanied by the model number, serial number, date installed, date of defect, description of defect, and the name of the distributor from whom it was purchased. All warranty claims must have prior written approval from **Monroe Truck Equipment, Inc.**

**Please return the warranty registration card that accompanies this manual to confirm receipt of this parts catalog and acknowledge the information contained within. Failure to return the attached card may result in a voided warranty.**



1051 West 7<sup>th</sup> Street  
Monroe, WI 53566  
608-328-8127 ~ Fax: 608-328-4278

## **Warranty Policy**

### **Uninstalled Parts and Equipment Provided by Monroe Truck Equipment**

Monroe Truck Equipment will provide the following limited warranty for a period of one year to the original purchaser of all uninstalled goods provided by Monroe Truck Equipment:

**LIMITED WARRANTY:** All goods provided by Monroe Truck Equipment (MTE) will be free from defects in material and workmanship for a period of one year from the date of purchase by the original purchaser. This limited warranty shall be the sole and exclusive remedy for any such product found to be defective. This limited warranty supercedes all previous warranties and is exclusive and in lieu of all other warranties, whether expressed or implied.

This limited warranty applies only to parts or accessories manufactured by MTE and/or provided by same. Except with respect to title, this limited warranty does not pertain to parts or accessories not manufactured and/or provided by MTE, regardless of whether such parts or accessories were selected and/or recommended by MTE. MTE will, as a service to the buyer, pass on any warranties received from the original manufacturer of MTE provided parts and/or accessories.

MTE will not under any circumstances be liable for any incidental or consequential damages whether in tort, contract, or otherwise, for any bodily injury, death, property damage, loss of use, or loss of income resulting from or in any way arising out of any goods provided by MTE, or their sale, use, or manufacture.

Any warranty claim deemed to be arising from the result of misuse, abuse, neglect, accident, improper installation, lack of maintenance, act of war (whether declared or otherwise), or act of God will be denied. Any repair or modification by the buyer or any third party, without the prior written consent of MTE, will void any possible warranty compensation. Any damage deemed to be the result of abnormal operation will not be compensated by this warranty.

Normal or special maintenance items such as fuels, fluids, tires, belts, hoses, filters, air cleaners, light bulbs, and any other items subject to normal wear and tear that are supplied in connection with goods provided by MTE are not allowed under this warranty.

All engines, pumps, cylinders, valves, and motors are warranted by their manufacturer and not by Monroe Truck Equipment. The manufacturer's warranty will apply to these parts. Electrical and hydraulic components are not to be disassembled without the express written consent of MTE. Any disassembly of MTE provided components without prior authorization will void the applicable warranty.

Monroe Truck Equipment shall be the sole and final determining authority as it applies to the administration of this warranty policy. Purchaser acknowledges receipt of Monroe Truck Equipment Warranty Policy and agrees to be bound by same.



**GLOBAL SOLUTIONS**  
ARMORED VEHICLES ~ SPORT TRUCK CONVERSIONS  
MUNICIPAL SNOW & ICE CONTROL ~ FIRE APPARATUS  
PICKUP TRUCK ACCESSORIES ~ TRUCK EQUIPMENT/MODIFICATIONS





1051 West 7<sup>th</sup> Street  
Monroe, WI 53566  
608-328-8127 ~ Fax: 608-328-4278

Any and all warranty claims must be forwarded to MTE within 10 days of defect discovery. A copy of the original Monroe Truck Equipment invoice as well as the manufacturer's model number, serial number, and date of installation must accompany all correspondence regarding said claims. MTE will, at their option, choose whether to repair or replace the defective part unless otherwise specified by the original manufacturer of said part.

### **Procedures for Warranty Claims Notification**

For submission of any warranty claim please contact Monroe Truck Equipment – Warranty Department at 800-356-8134

The following documentation will be needed when you call for initial warranty authorization:

1. A copy of the original MTE invoice.
2. Make, Model, and VIN or Serial Number of the equipment involved.
3. Part number and serial number of the part in question.
4. A complete description of the problem.

The following must accompany any claim submitted to Monroe Truck Equipment:

1. Documented photographs of any physical damage.
2. Inspection notes by MTE personnel or MTE authorized 3<sup>rd</sup> party.
3. Authorization number issued by Monroe Truck Equipment – Warranty Department.

**Defective parts must be returned to Monroe Truck Equipment (freight prepaid) within 30 days of issuance of Authorization Number.**

**Monroe Truck Equipment reserves the right to void any warranty for failure to comply with Monroe Truck Equipment Warranty Policy.**

**This policy is effective October 11, 2012**





