



# Open Spring Compression Trip Edge

## Service and Parts Manuals



**Snow & Ice Control**  
1051 W. 7th Street  
Monroe, WI 53566  
Phone: 608-328-8127  
Fax: 608-329-8488

# TABLE OF CONTENTS

<b>SAFETY INSTRUCTIONS</b>	<b>Page 2</b>
<b>MAINTENANCE INSTRUCTIONS</b>	<b>Page 3</b>
<b>TORQUE CHART</b>	<b>Page 3</b>
<b>GENERAL INFORMATION</b>	<b>Page 4</b>
<b>REPLACEMENT PARTS</b>	<b>Page 6-13</b>
<b>HOW TO ORDER PARTS</b>	<b>Page 14</b>
<b>RETURN POLICY</b>	<b>Page 14</b>
<b>WARRANTY INFORMATION</b>	<b>Page 15</b>

## SAFETY INSTRUCTIONS

- Read all installation, safety and maintenance instructions completely before operating this equipment
- Keep all personnel clear of moving parts while equipment is being operated.
- Do not operate equipment in need of maintenance! Repair immediately!
- While operating this equipment, use common sense, use caution, be alert and be safety-conscious.



### ! DANGER

#### AVOID HIGH-PRESSURE FLUIDS

Escaping fluid under pressure can penetrate the skin causing serious injury.

Avoid the hazard by relieving pressure before disconnecting hydraulic or other lines. Tighten all connections before applying pressure.

Search for leaks with a piece of cardboard. Protect hands and body from high pressure fluids.

If an accident occurs, see a doctor immediately. Any fluid injected into the skin must be surgically removed within a few hours or gangrene may result.



***CAUTION: “Stacking” (piling) of snow with a push plow is not recommended.***

***Raising the plow too high while stacking can damage the plow and mount by causing the lift arm to fold up and contact the moldboard.***

***Do not lift the plow more than 18” off the ground with piling and stacking snow.***

***Where possible, start the snow season by pushing snow as far back as possible from the area being plowed to avoid having to move or stack it later.***

# MAINTENANCE INSTRUCTIONS

## **In Season:**

- Check for loose bolts and nuts daily, and re-torque before use. (Failure to inspect equipment on a daily basis may seriously affect safety and/or efficiency.)
- Lubricate all grease fittings every ten hours of normal use and more frequently under heavy use.
- A cross over relief valve (1800 PSI) **MUST** be plumbed into the reversing circuit.
- Check all hydraulic fittings for tightness on a regular basis.
- System pressure should **NOT** exceed 2000 PSI.
- Check cutting edge for wear. Do not let cutting edge wear closer than ½" to ⅜" from the bottom angle of the moldboard.
- Due to the nature of use and environment this plow is operating in, damage and wear may occur at any time. Therefore, **Monroe Truck Equipment** recommends the end user establish and follow a daily inspection routine before using this plow.

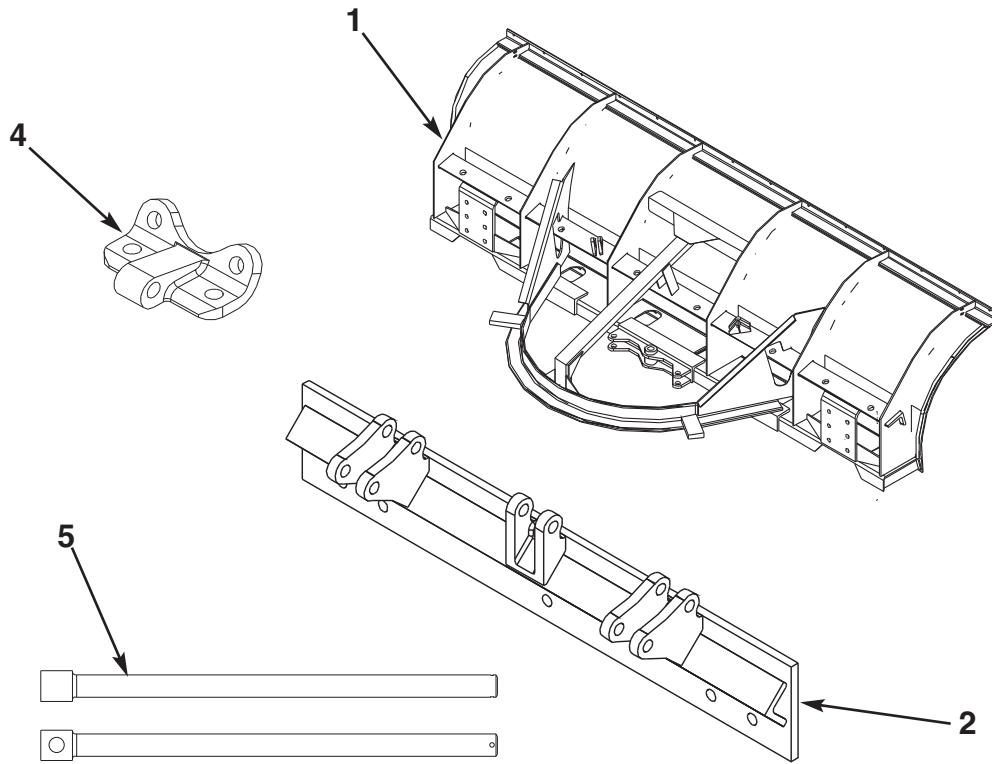
## **Off Season:**

- Use care when disconnecting hydraulic lines to assure that no dirt or foreign objects enter the hydraulic system. Use caps to cover hydraulic hose fittings and insert plugs in hydraulic ports.
- Hydraulic cylinders should be fully retracted when stored during the off season to prevent damage or corrosion. The remaining exposed shaft surface should be coated with a thick grease to prevent corrosion, which must be removed before returning to regular service.
- Check mounting bolts for wear and/or damaged threads and replace before next season.

## GENERAL INFORMATION

- Location descriptions are noted in direction of travel. (i.e. front, rear, left and right.)
- Delivery of replacement parts is subject to our sales delivery terms.
- Use only **Monroe Truck Equipment** O.E.M. replacement parts. Failure to do so will void warranty.
- Replacement parts listed in this manual reflect our most common plow items. If you do not find the part you require, please call your distributor.
- **Monroe Truck Equipment** reserves the right to make revisions or alterations to this parts manual.

## NOTES

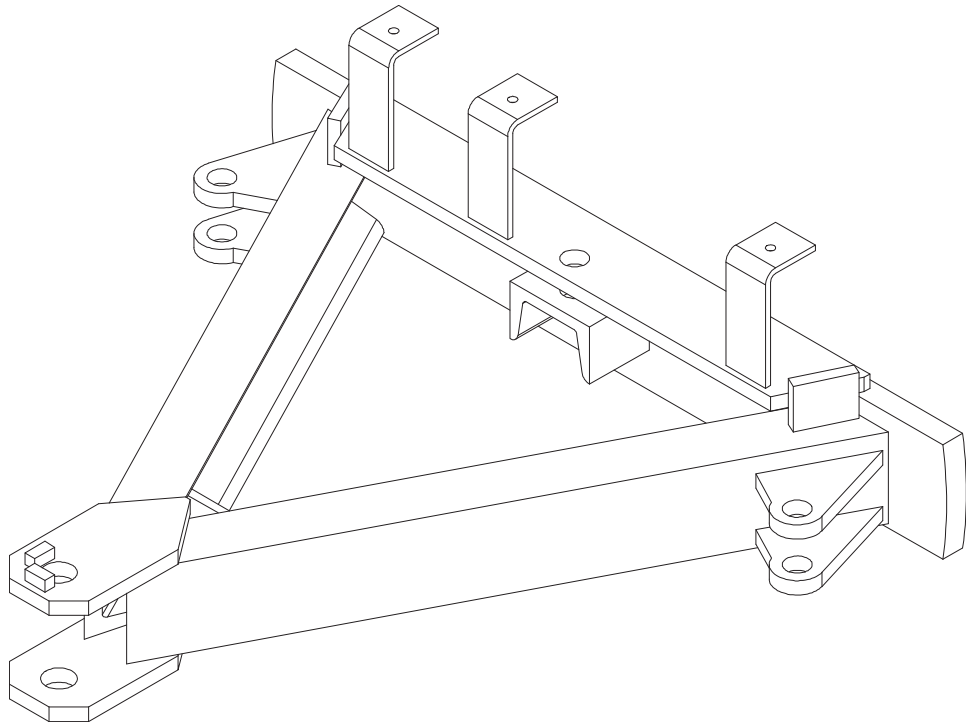


**MOLDBOARD ASSEMBLY, MP38R10-TE-FL,316**

ITEM	QTY	PART #	DESCRIPTION
1	1	00071885	Moldboard Weldment, MP38R10-ISTE-FL, 316
2	2	00071165	Trip Edge Weldment, Plow, 3'
	2	00071190	Trip Edge Weldment, Plow, 3'
3	2	00071166	Trip Edge Weldment, Plow, 2'
	2	00071191	Trip Edge Weldment, Plow, 2'
4	10	00071171	Mount Trip Edge, Plow Portion,
	10	00071194	Mount Weldment, Trip Edge
5	8	00071175	Adjustment Rod, Trip Edge
6	16	00071176	Retainer, Spring, Plow, Flink
	16	00071197	Spring Retainer Weldment, Flink
7	8	05035087	Spring Compression 3 OD x 16
8	8	05020919	Nut, 1 - 8, G8, Nylon Lock, Zinc
9	8	05022019	Pin, 3/16 x 2, Cotter
10	20	05014094	Bolt, 5/8 - 11 x 2, G5, Carriage, Zinc
11	18	00071184	Bolt, Trip Edge, Plow
12	38	05021383	Washer, 5/8, Lock, Heavy, zinc
13	20	05020270	Nut, 5/8 - 11, G8, Hex, Zinc
14	18	05020450	Nut, 5/8 - 11, G2, Hex, Zinc
15	18	05022021	Pin, 1/8 x 1, Cotter
16	8	05035088	Spring Compression, 1.84 OD x 13 OD

71884  
71891

**00138144 A-Frame Weldment, 1x5, Pivot**

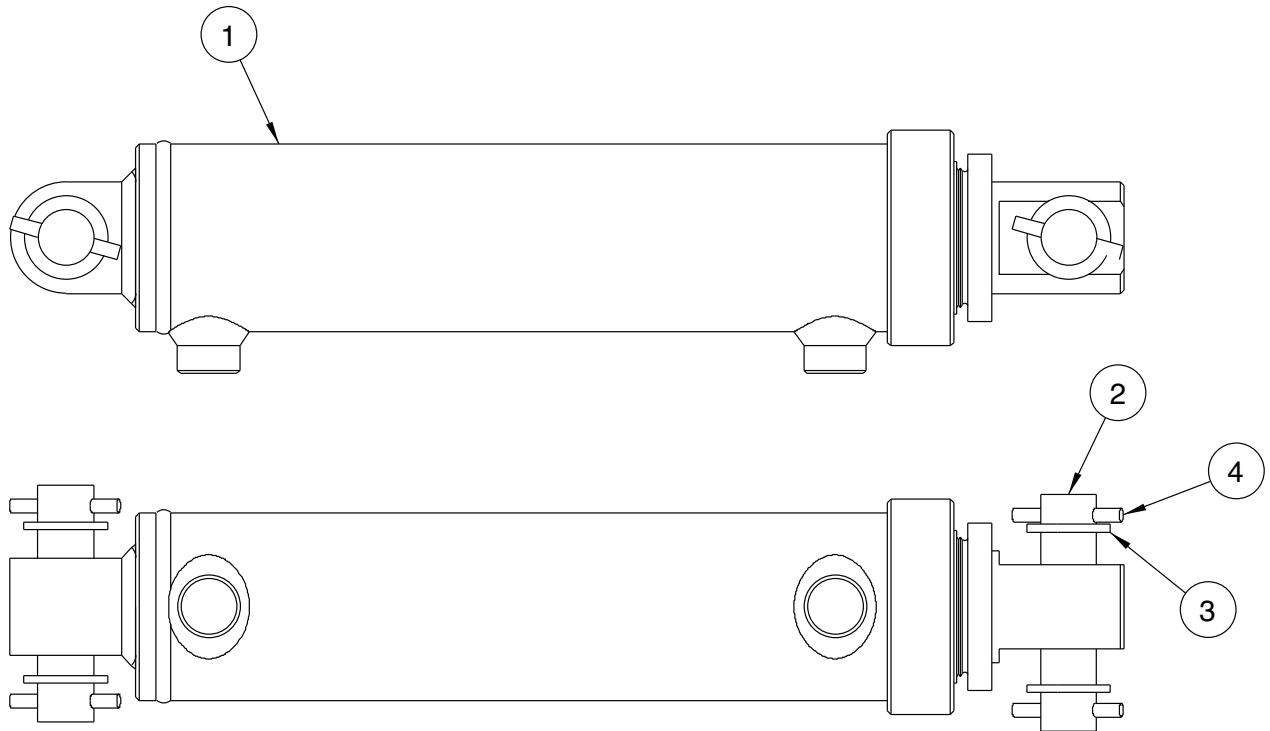




### LIFT KIT, 2-CHAIN

ITEM	QTY	PART #	DESCRIPTION
1	2	00027691	Chain, ½ x 60, Proof Coil
2	2	05010741	Bolt, ⅝ - 11 x 2½, G8, HHCS, Zinc
3	2	05020837	Nut, ⅝ - 11, GC, Top Lock, C&W

55943



### REVERSING KIT, FLOW, 3X10 CYLINDER

ITEM	QTY	PART #	DESCRIPTION
1	2	05000000	Cylinder, 3 x 10, DA, Lift, ORB Ports <i>(See page 13)</i>
2	4	05022040	Pin, 1 x 4¼, No Head
3	8	05021202	Bushing, 1½ x 1 x 10 Gauge, Zinc
4	8	05022026	Pin, ¼ x 2, Roll, Zinc
5	1	05043067	Cushion Block Assembly, W/Hose Kit <i>(See page 10)</i>
6	1	05037080	Hose Assembly
7	3	00055000	Clip, Hose Hold Down, Reversible Plow
8	3	05010620	Bolt, ⅝ - 18 x 1¼, G8, HHCS, Zinc
9	3	05020909	Nut, ⅝ - 18, GC, Top Lock, C&W
10	6	05050608	Cable, Tie, HD, 14" L x .300" W, Black

50926

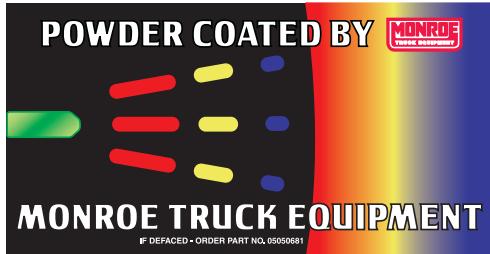
**0503708I CUSHION BLOCK ASSEMBLY, W/HOSE KIT**

ITEM	QTY	PART #	DESCRIPTION
1	1	05037006	Valve Cushion Relief, 1/2" NPT
2	1	05037178	Hose Assembly, Cushion Block

**CUTTING EDGE KIT, 5/8 X 6, TPCS**

<b>ITEM</b>	<b>QTY</b>	<b>PART #</b>	<b>DESCRIPTION</b>
1	2	00071182	Cutting Edge, 3', Flink, 5/8 x 6, TPCS
2	2	00071183	Cutting Edge, 2', Flink, 5/8 x 6, TPCS
3	18	05014555	Bolt, 5/8-11 x 3 1/2, G8, Dome Head, Plain
4	18	05021383	Washer, 5/8, Lock, Heavy, Zinc
5	18	05020270	Nut, 5/8-11, G8, Hex, Zinc

71181



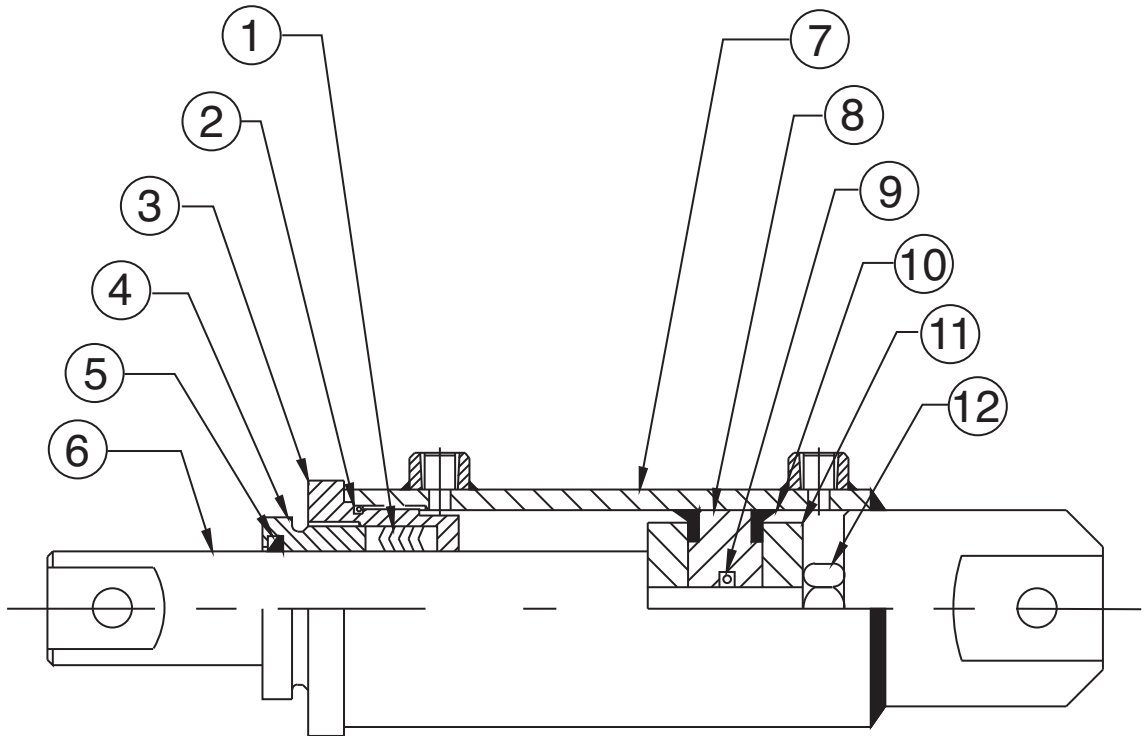
**DECAL KIT, FLOW**

ITEM	QTY	PART #	DESCRIPTION
1	1	05051507	Decal, Monroe Snowplow, 12 x 5
2	1	05050681	Decal, 2½ x 4½, Bonded Powder

55962

# 05000000 CYLINDER, 3 X 10, DA, NITRIDED ROD & POLY PAK

BEST METAL	ITEM	QTY	PART #	DESCRIPTION
	1	1	05000001	PACKING SET
	2	1	05000002	O-RING
	3	1	05000006	BOX
	4	1	05000007	NUT
	5	1	05000003	WIPER
	6	1	05000008	ROD
	7	1	05000014	TUBE
	8	1	05000010	PISTON
	9	1	05000004	O-RING
	10	2	05000005	CUP
	11	2	05000011	FOLLOWER
	12	1	05000012	NUT
	13	1	05000013	SEAL KIT



## HOW TO ORDER PARTS

To order or inquire about replacement parts, please contact the **distributor** or **store** that the product was purchased through. To speed the information flow, please have the following information ready:

- Model Number
- Serial Number
- Part Number and/or description as per the parts manual
- Quantity needed

For further information about **Monroe Truck Equipment** replacement parts, please call 877-834-9049 and ask for **Snow & Ice Parts Sales**.

## RETURN POLICY

Merchandise returned to **Monroe Truck Equipment** must have a Returned Goods Authorization (RGA) form filled out completely and signed by authorized personnel. To get your RGA form, call 800-880-0109. For whole goods, ask for **Snow & Ice Sales**. For replacement parts, ask for **Snow & Ice Parts Sales**. All returned items are subject to a 15% restocking fee and must be sent freight prepaid!

## MONROE TRUCK EQUIPMENT, INC. WARRANTY SNOW & ICE CONTROL PRODUCTS

**Monroe Truck Equipment, Inc.** warrants to the original purchaser, that if any part of the product proves to be defective in workmanship or material within **ONE YEAR** of the original installation, and is returned to us within 30 days of the discovered defect, we will (at our option) repair or replace the defective part. This warranty does not apply to damage resulting from misuse, neglect, accident, improper installation, normal wear items or lack of maintenance. This warranty is exclusive and supersedes all other warranties, whether expressed or implied. **Monroe Truck Equipment, Inc.** neither assumes, nor authorizes anyone to assume for it, any other obligation or liability in connection with this warranty and will not be liable for consequential damages.

All engines, pumps, motors, cylinders and valves are warranted by their manufacturer and not by **Monroe Truck Equipment, Inc.**. The manufacturer's warranty will apply to these parts. Electrical and hydraulic components are not to be disassembled without the express written permission of Monroe Truck Equipment. Use of replacement parts other than original equipment voids this warranty.

All defective parts returned must be accompanied by the model number, serial number, date installed, date of defect, description of defect, and the name of the distributor from whom it was purchased. All warranty claims must have prior written approval from **Monroe Truck Equipment, Inc.**

***Please return the warranty registration card that accompanies this manual to confirm receipt of this parts catalog and acknowledge the information contained within. Failure to return the attached card may result in a voided warranty.***





1051 West 7<sup>th</sup> Street  
 Monroe, WI 53566  
 608-328-8127 ~ Fax: 608-328-4278

## **Warranty Policy**

### **Uninstalled Parts and Equipment Provided by Monroe Truck Equipment**

Monroe Truck Equipment will provide the following limited warranty for a period of one year to the original purchaser of all uninstalled goods provided by Monroe Truck Equipment:

**LIMITED WARRANTY:** All goods provided by Monroe Truck Equipment (MTE) will be free from defects in material and workmanship for a period of one year from the date of purchase by the original purchaser. This limited warranty shall be the sole and exclusive remedy for any such product found to be defective. This limited warranty supercedes all previous warranties and is exclusive and in lieu of all other warranties, whether expressed or implied.

This limited warranty applies only to parts or accessories manufactured by MTE and/or provided by same. Except with respect to title, this limited warranty does not pertain to parts or accessories not manufactured and/or provided by MTE, regardless of whether such parts or accessories were selected and/or recommended by MTE. MTE will, as a service to the buyer, pass on any warranties received from the original manufacturer of MTE provided parts and/or accessories.

MTE will not under any circumstances be liable for any incidental or consequential damages whether in tort, contract, or otherwise, for any bodily injury, death, property damage, loss of use, or loss of income resulting from or in any way arising out of any goods provided by MTE, or their sale, use, or manufacture.

Any warranty claim deemed to be arising from the result of misuse, abuse, neglect, accident, improper installation, lack of maintenance, act of war (whether declared or otherwise), or act of God will be denied. Any repair or modification by the buyer or any third party, without the prior written consent of MTE, will void any possible warranty compensation. Any damage deemed to be the result of abnormal operation will not be compensated by this warranty.

Normal or special maintenance items such as fuels, fluids, tires, belts, hoses, filters, air cleaners, light bulbs, and any other items subject to normal wear and tear that are supplied in connection with goods provided by MTE are not allowed under this warranty.

All engines, pumps, cylinders, valves, and motors are warranted by their manufacturer and not by Monroe Truck Equipment. The manufacturer's warranty will apply to these parts. Electrical and hydraulic components are not to be disassembled without the express written consent of MTE. Any disassembly of MTE provided components without prior authorization will void the applicable warranty.

Monroe Truck Equipment shall be the sole and final determining authority as it applies to the administration of this warranty policy. Purchaser acknowledges receipt of Monroe Truck Equipment Warranty Policy and agrees to be bound by same.



**GLOBAL SOLUTIONS**  
 ARMORED VEHICLES ~ SPORT TRUCK CONVERSIONS  
 MUNICIPAL SNOW & ICE CONTROL ~ FIRE APPARATUS  
 PICKUP TRUCK ACCESSORIES ~ TRUCK EQUIPMENT/MODIFICATIONS





1051 West 7<sup>th</sup> Street  
Monroe, WI 53566  
608-328-8127 ~ Fax: 608-328-4278

Any and all warranty claims must be forwarded to MTE within 10 days of defect discovery. A copy of the original Monroe Truck Equipment invoice as well as the manufacturer's model number, serial number, and date of installation must accompany all correspondence regarding said claims. MTE will, at their option, choose whether to repair or replace the defective part unless otherwise specified by the original manufacturer of said part.

### **Procedures for Warranty Claims Notification**

For submission of any warranty claim please contact Monroe Truck Equipment – Warranty Department at 800-356-8134

The following documentation will be needed when you call for initial warranty authorization:

1. A copy of the original MTE invoice.
2. Make, Model, and VIN or Serial Number of the equipment involved.
3. Part number and serial number of the part in question.
4. A complete description of the problem.

The following must accompany any claim submitted to Monroe Truck Equipment:

1. Documented photographs of any physical damage.
2. Inspection notes by MTE personnel or MTE authorized 3<sup>rd</sup> party.
3. Authorization number issued by Monroe Truck Equipment – Warranty Department.

**Defective parts must be returned to Monroe Truck Equipment (freight prepaid) within 30 days of issuance of Authorization Number.**

**Monroe Truck Equipment reserves the right to void any warranty for failure to comply with Monroe Truck Equipment Warranty Policy.**

**This policy is effective October 11, 2012**



