



---

# **Parts & Service Manual for REVERSIBLE PLOWS**

**Torsion Trip Edge  
J-Style Torsion Trip Edge  
Compression Trip Edge**



**Monroe Snow & Ice Control**  
1051 W. 7th Street • Monroe, WI 53566  
USA: 877-834-9049 • Fax: 608-329-8488  
[www.monroetruck.com](http://www.monroetruck.com)

05052326-23  
8/15/2014



# Table of Contents

---

General Information	10
How to Order Parts	10
Return Policy	10
Safety Instructions	2
Maintenance Instructions	3
Operating Instructions	7
Replacement Parts	11
Warranty	79

# Safety Instructions

---

## **WARNING**

***Before working under the vehicle or around the plow, shut off the truck engine and remove the key from the ignition. Prevent accidental hydraulic system startup and operation of the plow to avoid personal injury!***

- Locate and read all safety decals on the unit before operating the equipment. Familiarize yourself with all potential hazards in operating this equipment.
- Read all installation, operation, and maintenance instructions before operating the equipment.
- Be aware of the extra vehicle length and width created by the plow installation. Allow for the extra width when driving in traffic, passing parked vehicles, and entering buildings through overhead doors.
- Maximum recommended plowing speed is 35 mph.
- For transport, plows with angle cylinders should be angled fully to the right to reduce the overall width of the truck and plow.
- Maximum recommended transport speed is 45 mph.
- Stay away from the plow when it is moving (raise, lower, angle). Stay away from pinch points created by the moving plow components.
- Always lower the plow to the ground before leaving the vehicle unattended.
- Lower the plow to the ground before working on any of its components.
- Never work on or around the plow unless the vehicle is turned off and the ignition key is removed. Follow lock-out/tag procedures for working on hazardous equipment.
- Watch for hydraulic fluid leaks at fittings and hoses. High-pressure fluid leaks can penetrate skin and cause severe injury.
- Do not climb or walk on the plow or its mounting components, especially when the unit is wet or icy.
- If the plow needs repair or the controls are not functioning properly, repair the unit immediately. Do not continue to operate a malfunctioning unit—further and more serious damage may occur.
- Do not disassemble spring-loaded components such as trip edges and trip springs unless you have the correct tools and are trained in these tasks. Pre-loaded springs are under extreme compression and can cause severe injury if the spring force is released suddenly and unexpectedly.
- If the plow accidentally impacts an object during use, stop immediately and inspect all components. Look for bent and broken components. Do not continue to operate with a severely damaged plow.
- When removing and storing a plow for summer, locate it away from high traffic areas and block it securely so it cannot fall or be pushed over.

# Maintenance Instructions

---

Due to the nature of plow use and the environment that plows operate in, wear and damage can be expected during the life of a plow. For maximum safety, durability, and longevity of a plow, end users must establish and follow a maintenance schedule and a storage procedure.

## **Plowing Season**

### ***Plow Mechanical***

- Check the operation of all plow functions prior to a snow event. Make sure the plow is working properly before starting to plow.
- Retighten all fasteners after the first 8 hours of plowing.
- Lubricate all grease points every 10 hours under normal use and more frequently under heavy use.
- Inspect all threaded fasteners after each plowing event. Retighten as necessary.
- Inspect any pivot pins (unthreaded) after each plowing event. Make sure cotter pins, lynch pins, or spring clips are in place in the pivot pins.
- Check trip spring tension after each plowing event (adjustable springs only).
- Inspect the cutting edge after each plowing event. Replace the cutting edge when the bottom edge is ½" from the bottom angle of the moldboard.
- If the plow impacts a fixed object above 5 mph, stop and inspect the plow and hitch closely for bending or fracturing of metal components.

### ***Hydraulics***

- All reversible plows must have a 30 gpm (minimum) cross-over relief valve between the reversing cylinders. The required relief pressure is 1,800 psig for 3-inch cylinders and 1,000 psig for 4-inch cylinders. This relief valve protects the plow, the hitch, and the vehicle from damage if the plow hits a fixed object when partially angled.
- If MTE did not install the plow, the end user is responsible for installing a cross-over relief valve.
- Check the level in the hydraulic reservoir weekly. Use only the type of fluid recommended by the hydraulics supplier.
- Check for fluid leaks at hydraulic fittings and hoses weekly. Repair leaks immediately.
- Tighten all hydraulic fittings annually or more often during frequent use of the hydraulic system.
- Unless otherwise specified, system pressure must not exceed 2,000 psig.
- Do not make adjustments to hydraulic system pressures without consulting MTE.

# Maintenance Instructions *(Continued)*

---

## ***Electrical***

- Check the plow lights and turn signals each day.
- Keep wiring harnesses tied up so they don't drag on the ground or get snagged by moving components. Keep wiring off sharp edges that could cut through the wire insulation.
- Keep electrical connectors pushed together tightly to reduce entry of water and road salt.
- Pull electrical connectors apart once a month to check for corrosion. Re-apply dielectric grease each time a connector is pulled apart.
- If a fuse blows, replace it with a fuse of the same amperage rating as the original. If a fuse keeps blowing, investigate the reason for the overload condition.

## **Off Season**

- Inspect the plow and check the operation of all functions before removing the plow for the season. Determine if there are any problems with the plow and its controls before storing it for the off season. Schedule repairs and parts replacements before the start of the next snow season.
- Inspect all fasteners for looseness and corrosion. If fasteners are removed during plow removal, inspect for damaged threads, bending, and signs of shearing forces. Damaged fasteners must be replaced. Split lock washers and clincher-type lock nuts should not be reused.
- Lubricate all grease points before storing the plow.
- Retract hydraulic cylinders as far as possible to protect the polished ram surfaces from corrosion. Apply a heavy coat of grease to the remaining exposed ram to protect it from corrosion.
- Cap and plug the ends of quick disconnects on hydraulic hoses when disconnecting them. Dirt that gets on the disconnect halves will enter the hydraulic system when the hoses are reconnected. Wipe the quick disconnect ends with a clean rag before reconnecting them.
- If the plow is stored outside, cover electrical wiring, hydraulic hoses, and plastic parts to protect from sunlight and UV damage. Store the plow inside a building if possible.

# Replacing the Cutting Edge

---

1. Raise the plow as high as possible and block it up under the hitch. Do not work under the plow if it is supported only by the hydraulic system.
2. Inspect the old cutting edge for uneven wear or damage that could indicate other problems with or improper operation of the plow.
3. Remove the old cutting edge fasteners. The old fasteners will typically be corroded and/or damaged. If necessary, cut off the fasteners with a torch. Be careful not to damage the moldboard.
4. Never re-use the old fasteners. Make sure you have new fasteners before removing the old cutting edge. Fasteners must be Grade 8.
5. With the old cutting edge removed, inspect the mounting area on the moldboard. Look for severe corrosion, bending, and impact damage. Clean off dirt and surface corrosion and check the mounting face with a straight edge. A bent or damaged mounting surface will make it difficult to keep the cutting edge fasteners tight and in severe cases, may cause plow chatter.
6. Severe damage to the moldboard must be repaired before a new cutting edge is installed and the plow is returned to service. In some cases the moldboard may need to be replaced.
7. Use a scraper and light sanding to remove all dirt and corrosion from the mounting face on the moldboard. The new cutting edge must rest flat on the moldboard for proper clamping force when the fasteners are tightened.
8. Check the mounting face of the new cutting edge for dirt, corrosion, paint and other contamination. Clean any contamination off the cutting edge mounting face.
9. Hold the cutting edge up to the moldboard. Make sure it fits properly and sits flat against the moldboard. Make sure all the fastener holes line up between the cutting edge and the moldboard.

***(Continued on the following page.)***

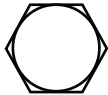

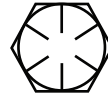
## Replacing the Cutting Edge *(Continued)*

---

10. Note the required installation direction for carriage-type bolts and insert the fasteners. Start the nuts on to the bolt threads. Flanged top-lock (clicher) nuts are recommended. Standard top-lock nuts with hardened flat washers are also acceptable. Standard nuts with split lock washers are supplied with some installations but are not recommended. Do not use nylon-insert type lock nuts. Non-hardening (blue) thread locker is recommended for any fastener used.
11. Snug all the nuts down just enough to hold the cutting edge in the proper position.
12. Starting at the middle of the cutting edge and working outward, tighten the fasteners with a calibrated torque wrench. Use the recommended torque for Grade 8 bolts and the type of nut being used.
13. After the first four hours of plow operation with the new cutting edge, tighten the fasteners again.
14. Check the fasteners for condition and tightness prior to or just after each storm event.

## Torque Chart

---

<b>SIZE</b>	 <b>GRADE 2</b>	 <b>GRADE 5</b>	 <b>GRADE 8</b>
1/4-20	50 IN-LBS	75 IN-LBS	9 FT-LBS
3/8-16	15 FT-LBS	23 FT-LBS	35 FT-LBS
1/2-13	35 FT-LBS	55 FT-LBS	80 FT-LBS
5/8-11	75 FT-LBS	110 FT-LBS	170 FT-LBS
3/4-10	130 FT-LBS	200 FT-LBS	280 FT-LBS
1-8	190 FT-LBS	480 FT-LBS	680 FT-LBS
1 1/4-7	380 FT-LBS	840 FT-LBS	1,360 FT-LBS



# Operation Guidelines

---

## **Definitions**

**Back-Dragging:** Driving over snow, dropping the plow blade, and pulling snow backwards. Used to clear snow from around buildings, garage doors, etc. Snow is typically pulled back far enough to gain access to push it away using normal plowing techniques.

**Windrowing:** Process of plowing from the middle of a parking area and creating a row of piled snow that is pushed further aside with each pass of the plow vehicle or left in an area where it does not obstruct traffic.

**Reversing:** Angling the plow blade to the left to change the direction of snow movement. Pushing snow to the right on a road is considered the normal plowing angle.

**Stacking:** Pushing snow up on to an existing snow pile to gain more room in a parking area, etc.

- Know the locations of fixed obstacles in the area to be plowed. This is best done by studying the area to be plowed before the first storm and noting items like fire hydrants and culverts. Hydrants, gas mains, water risers and other objects likely to be in the path of a plow should be flagged early in the season.
- Have a plan for where to push the snow you are plowing. Push snow into areas where it can remain throughout the winter. If it's early in the season, remember to leave room for future storms.
- Maximum recommended plowing speed is 35 mph, and slower where there are many obstructions.
- For snow close to buildings and overhead doors, drive straight up to the building or door. Drop the plow and backdrag the snow to a point where you can plow it away perpendicular to the building.
- Unless you are backdragging snow, raise the blade when backing up.
- Avoid trying to "stack" snow too high—this stresses the plow hitch and may cause mechanical damage. Keep snow pushed back as far as possible early in the season so there is room to store it without high stacking.
- Avoid "ramming" into snow piles at plowing speed. This can damage the plow and the vehicle.
- Do not plow snow into public streets where it will obstruct traffic. This is illegal in most areas.
- Do not push snow into streams, rivers, or lakes. Salt and debris in the snow may contaminate surface water.
- Do not cover storm drains with snow piles. Drains need to remain open to prevent flooding when the snow thaws.

## Operation Guidelines *(Continued)*

---

### ***Plow Float Function, Double Acting Hydraulic Cylinder***

- Your plow may be equipped with a “Float” function. Float is used when the plow is on the ground and plowing snow.
- When the Float function is engaged, the plow is free to move up and down. This allows the plow to follow ground contours better and lets the plow ride up if it hits a large obstruction.
- For systems with a double acting hydraulic lift cylinder, Float overrides the normal power circuits for the cylinder and allows it to move freely.
- Float should be engaged at all times when plowing. Plowing with the plow “powered down” may cause plow or vehicle damage or loss of vehicle control.
- Do not “power down” plow except when back-dragging at low speed.
- For hydraulic systems with manual control levers, the Float function is a detent in the spool valve. The plow lever must be pushed all the way forward where it will remain until manually pulled back. Make sure the plow lever stays in the detent position when you remove your hand from the lever.
- For hydraulic systems with electric valves and controls, the Float function is typically engaged by a spring-return toggle switch on a joystick. The switch must be pressed each time the plow is lowered to the ground. The Float function typically disengages automatically when the joystick is pulled back to raise the plow.
- If you believe the Float function is not operating properly, have the system checked and repaired as soon as possible.

# Operation Guidelines *(Continued)*

---

## ***Cross-Over Relief Valve***

- Each plow is equipped with a cross-over relief valve that protects the plow and vehicle from damage if an outboard edge of the plow impacts a fixed object. A heavy impact causes the relief valve to open, transferring hydraulic fluid from one reversing cylinder to the other. This allows the blade to angle back and away from the impacted object.
- The standard pressure relief setting for Monroe Truck Equipment installed valves is 1,800 psi. For most plows, this provides the best balance between protecting the plow and vehicle and preventing the plow from “drifting” back to full angle under normal plowing conditions.
- NOTE: If the plow blade is angled all the way back to a stop, the relief valve will not have any effect if the blade impacts a fixed object.
- Under normal circumstances, the pressure relief valve should not be adjusted or tampered with.
- If necessary, the relief pressure set point can be adjusted to a lower pressure to let the valve relieve during lighter impacts. However, this will result in more “drifting” of the blade while plowing.
- Never increase the relief pressure set point - this can lead to damage to the plow blade, hitch and possibly the vehicle.
- Whenever the relief valve is checked or adjusted, install a pressure gauge in the hydraulic circuit to monitor pressure. Never make adjustments to a hydraulic system without gauges to monitor pressures.

## General Information

---

- Use only Monroe Truck Equipment O.E.M. replacement parts. Failure to do so will void the warranty.
- Location descriptions are noted in direction of travel (i.e. front, rear, left and right).
- Delivery of replacement parts is subject to our sales delivery terms.
- Replacement parts listed in this manual reflect the most common items for this product. If you do not find the part you require, please call your distributor.
- Monroe Truck Equipment reserves the right to make revisions or alterations to the parts manual at any time.

## How to Order Parts

---

To order or inquire about replacement parts, please contact the distributor or store that the product was purchased through. To speed the information flow, please have the following information available:

- Model Number
- Serial Number
- Part Number and/or Description of the Part
- Quantity Needed

For further information about Monroe Truck Equipment replacement parts, please call 877-834-9049.

## Return Policy

---

Merchandise returned to Monroe Truck Equipment must have a Warranty Service Request (WSR) form filled out completely and signed by authorized personnel.

To get your WSR form for whole goods, call Snow & Ice Sales at 800-880-0109.

To get your WSR form for replacement parts, call Warranty at 877-834-9049..

All returned items are subject to a 15% restocking fee and ***must be sent freight pre-paid.***

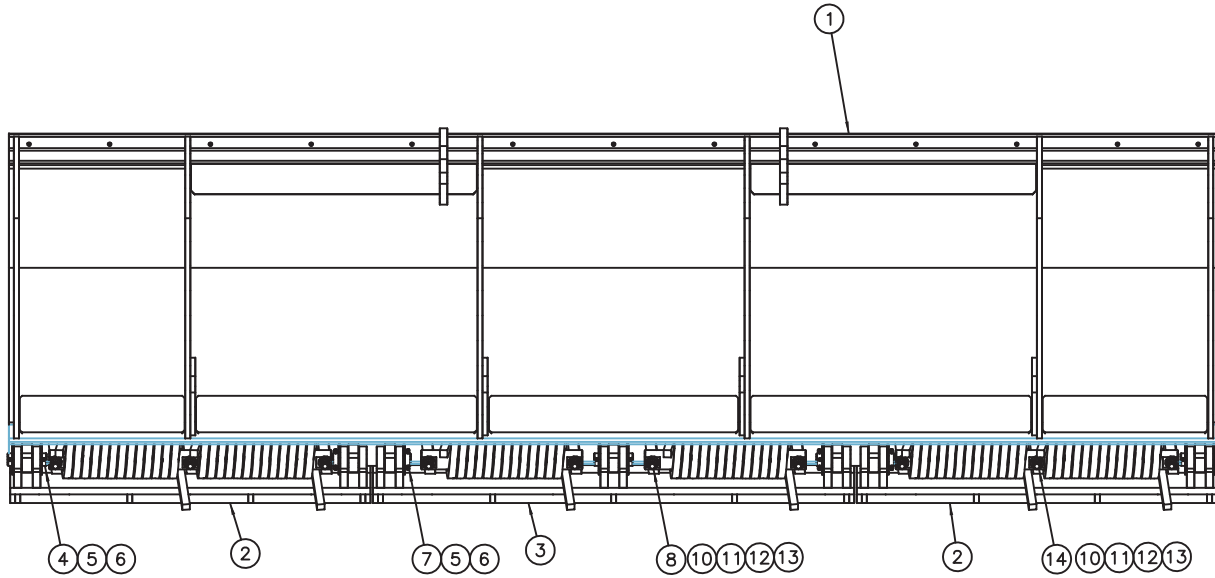
---

# **Reversible Torsion Trip Edge**

---

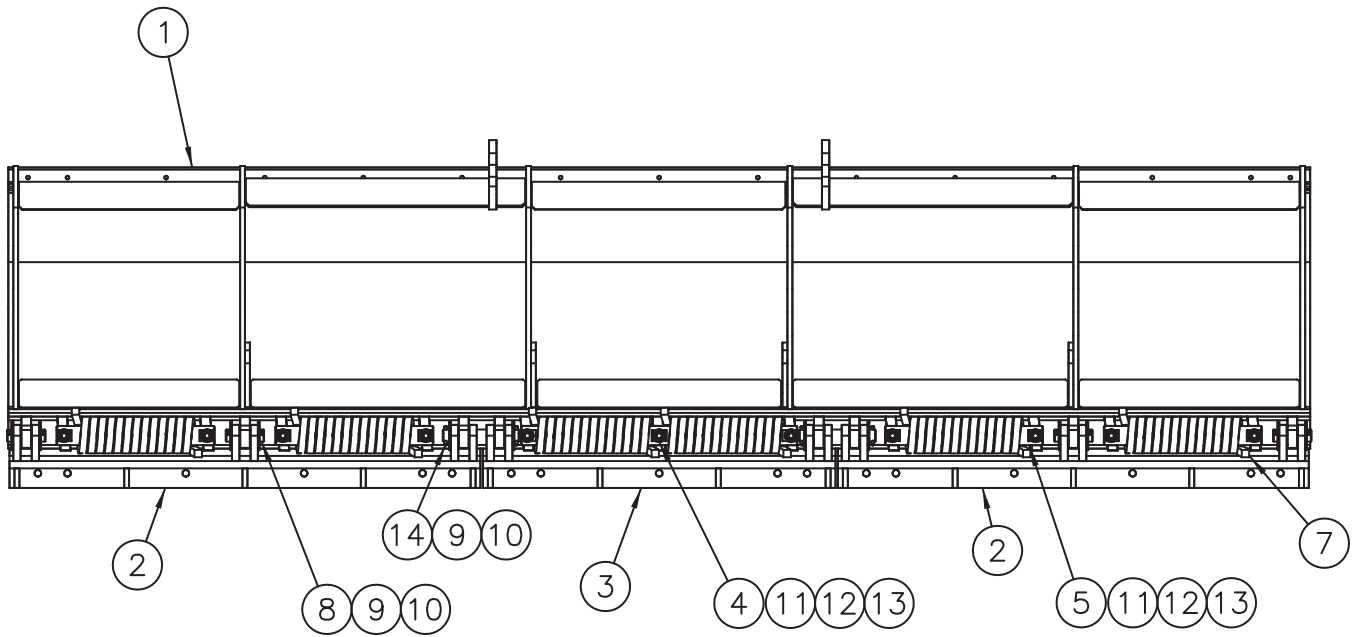
## PLOW, TORSION TRIP EDGE

Item	Qty.	Part Number	Description
1	1	00148088	MOLDBOARD ASSEMBLY, PLOW, MP39R10-TT SEE PAGE 13
		00148052	MOLDBOARD ASSEMBLY, PLOW, MP39R10-ISTT SEE PAGE 13
		00149840	MOLDBOARD ASSEMBLY, PLOW, MP39R11-TT SEE PAGE 14
		00148056	MOLDBOARD ASSEMBLY, PLOW, MP39R11-ISTT SEE PAGE 14
		00149848	MOLDBOARD ASSEMBLY, PLOW, MP39R12-TT SEE PAGE 15
		00148067	MOLDBOARD ASSEMBLY, PLOW, MP39R12-ISTT SEE PAGE 15
		00149832	MOLDBOARD ASSEMBLY, PLOW, MP44R10-TT SEE PAGE 13
		00148047	MOLDBOARD ASSEMBLY, PLOW, MP44R10-ISTT SEE PAGE 13
		00157346	MOLDBOARD ASSEMBLY, PLOW, MP44R10-ISTT SEE PAGE 13
		00149852	MOLDBOARD ASSEMBLY, PLOW, MP44R11-TT SEE PAGE 14
		00139282	MOLDBOARD ASSEMBLY, PLOW, MP44R11-ISTT SEE PAGE 14
		00149856	MOLDBOARD ASSEMBLY, PLOW, MP44R12-TT SEE PAGE 15
		00148006	MOLDBOARD ASSEMBLY, PLOW, MP44R12-ISTT SEE PAGE 15
		00149860	MOLDBOARD ASSEMBLY, PLOW, MP51R11-TT SEE PAGE 14
		00148075	MOLDBOARD ASSEMBLY, PLOW, MP51R11-ISTT SEE PAGE 14
		00149864	MOLDBOARD ASSEMBLY, PLOW, MP51R12-TT SEE PAGE 15
00148081	MOLDBOARD ASSEMBLY, PLOW, MP51R12-ISTT SEE PAGE 15		
2	1	00050456	CUTTING EDGE KIT, 10', TE, .625 X 8, TPCSK SEE PAGE 16
		00050457	CUTTING EDGE KIT, 11', TE, .625 X 8, TPCSK SEE PAGE 16
		00050458	CUTTING EDGE KIT, 12', TE, .625 X 8, TPCSK SEE PAGE 16
3	1	00050926	REVERSING KIT, PLOW, 3X10 CYL SEE PAGE 18
4	1	00096030	PUSHFRAME KIT, RVS, 39 & 44TT SEE PAGE 21
		00050454	PUSHFRAME KIT, RVS, TE, 10'-12' SEE PAGE 26
5	1	00050466	STABILIZER ARM KIT, PLOW SEE PAGE 27
6	1	05050095	TAG, SERIAL NUMBER
7	1	00055962	DECAL KIT, PLOW/WING SEE PAGE 76
8	1	05052326	MANUAL, PLOW, TORSION TRIP



### MOLDBOARD ASSEMBLY, PLOW, 10' BOLT-IN SPRING

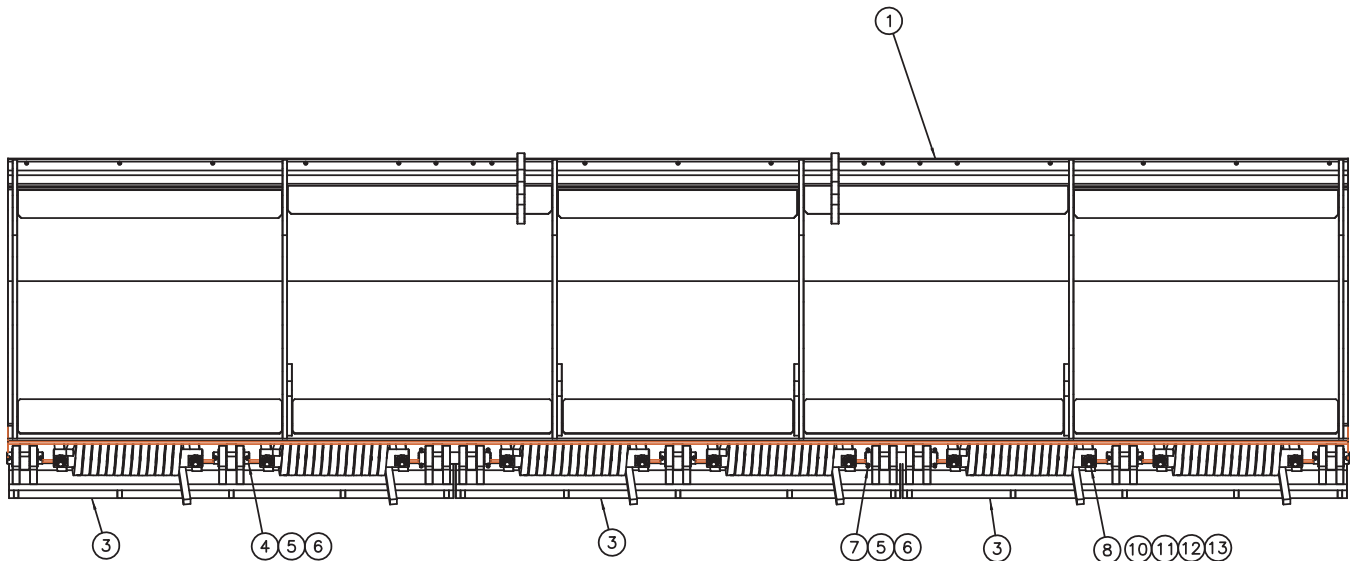
Item	Qty.	Part Number	Description
1	1	00148089 00148053 00149833 00148048 00157347	MOLDBOARD WELDMENT, PLOW, MP39R10-TT MOLDBOARD WELDMENT, PLOW, MP39R10-ISTT MOLDBOARD WELDMENT, PLOW, MP44R10-TT MOLDBOARD WELDMENT, PLOW, MP44R10-ISTT MOLDBOARD WELDMENT PLOW, MP44R10-ISTT
2	2	00130526	TRIP EDGE WELDMENT, PLOW, 3'
3	1	00130527	TRIP EDGE WELDMENT, PLOW, 4'
4	3	00054787	PIN, 1.25 X 3.875, NO HEAD
5	10	05021191	BUSHING, MACH, 1.88 X 1.25 X 14GA, ZINC
6	10	05022039	PIN, ROLL, .313 X 2 OA
7	2	00144195	PIN, 1.25 X 7.750 NO HEAD
8	2	00149624	PIN, 1.938 DIA X 16 NO HEAD
10	10	05010749	BOLT, .625-11 X 5, G8, HHCS, ZINC
11	20	05021017	WASHER, .625, FLAT, MIL-CARB, SAE
12	10	05020837	NUT, .625-11, GC, TOP LOCK, C&W
13	6	05035110	SPRING TORSION, .750 SQ WIRE
14	2	00150541	PIN, 1.938 DIA X 28 NO HEAD



### MOLDBOARD ASSEMBLY, PLOW, 11' BOLT-IN SPRING

Item	Qty.	Part Number	Description
1	1	00149841 00148057 00149853 00139281 00149861 00148076	MOLDBOARD WELDMENT, PLOW, MP39R11-TT MOLDBOARD WELDMENT, PLOW, MP39R11-ISTT MOLDBOARD WELDMENT, PLOW, MP44R11-TT MOLDBOARD WELDMENT, PLOW, MP44R11-ISTT MOLDBOARD WELDMENT, PLOW, MP51R11-TT MOLDBOARD WELDMENT, PLOW, MP51R11-ISTT
2	2	00130527	TRIP EDGE WELDMENT, PLOW, 4'
3	1	00130526	TRIP EDGE WELDMENT, PLOW, 3'
4	1	00150541	PIN, 1.938 DIA X 28 NO HEAD
5	4	00149624	PIN, 1.938 DIA X 16 NO HEAD
7	6	05035110	SPRING TORSION, .750 SQ WIRE
8	4	00054787	PIN, 1.25 X 3.875 NO HEAD
9	12	05021191	BUSHING, MACH, 1.88 X 1.25 X 14GA, ZINC
10	12	05022039	PIN, ROLL, .313 X 2 OA
11	11	05010749	BOLT, .625-11 X 5, G8, HHCS, ZINC
12	22	05021017	WASHER, .625, FLAT, MIL-CARB, SAE
13	11	05020837	NUT, .625-11, GC, TOP LOCK, C&W
14	2	00144195	PIN, 1.25 X 7.750 NO HEAD





### MOLDBOARD ASSEMBLY, PLOW, 12' BOLT-IN SPRING

Item	Qty.	Part Number	Description
1	1	00149849 00148068 00149857 00148007 00157367 00149865 00148082	MOLDBOARD WELDMENT, PLOW, MP39R12-TT MOLDBOARD WELDMENT, PLOW, MP39R12-ISTT MOLDBOARD WELDMENT, PLOW, MP44R12-TT MOLDBOARD WELDMENT, PLOW, MP44R12-ISTT MOLDBOARD WELDMENT, PLOW, MP51R12-ISTT MOLDBOARD WELDMENT, PLOW, MP55R12-TT MOLDBOARD WELDMENT, PLOW, MP55R12-ISTT
3	3	00130527	TRIP EDGE WELDMENT, PLOW, 4'
4	5	00054787	PIN, 1.25 X 3.875, NO HEAD
5	14	05021191	BUSHING, MACH, 1.88 X 1.25 X 14GA, ZINC
6	14	05022039	PIN, ROLL, .313 X 2 OA
7	2	00144195	PIN, 1.25 X 7.750 NO HEAD
8	6	00149624	PIN, 1.938 DIA X 16 NO HEAD
10	12	05010749	BOLT, .625-11 X 5, G8, HHCS, ZINC
11	24	05021017	WASHER, .625, FLAT, MIL-CARB, SAE
12	12	05020837	NUT, .625-11, GC, TOP LOCK, C&W
13	6	05035110	SPRING TORSION, .750 SQ WIRE

**00050456 CUTTING EDGE KIT, 10'**

Item	Qty.	Part Number	Description
1	2	05031069	CUTTING EDGE, .625 X 8 X 3', TPCS
2	1	05031070	CUTTING EDGE, .625 X 8 X 4', TPCS
3	16	05014551	BOLT, .625-11 X 2.5", G8, DOME HEAD, PLAIN
4	16	05021383	WASHER, .625, LOCK, HEAVY, ZINC
5	16	05020270	NUT, .625-11, G8, HEX, ZINC

**00050457 CUTTING EDGE KIT, 11'**

Item	Qty.	Part Number	Description
1	1	05031069	CUTTING EDGE, .625 X 8 X 3', TPCS
2	2	05031070	CUTTING EDGE, .625 X 8 X 4', TPCS
3	17	05014551	BOLT, .625-11 X 2.5", G8, DOME HEAD, PLAIN
4	17	05021383	WASHER, .625, LOCK, HEAVY, ZINC
5	17	05020270	NUT, .625-11, G8, HEX, ZINC

**00050458 CUTTING EDGE KIT, 12'**

Item	Qty.	Part Number	Description
1	3	05031070	CUTTING EDGE, .625 X 8 X 4', TPCS
2	18	05014551	BOLT, .625-11 X 2.5", G8, DOME HEAD, PLAIN
3	18	05021383	WASHER, .625, LOCK, HEAVY, ZINC
4	18	05020270	NUT, .625-11, G8, HEX, ZINC

**0005930 TORSION TRIP EDGE, CARBIDE 10'**

Item	Qty.	Part Number	Description
1	2	05031082	CUTTING EDGE, 3', .75 X 6", CARBIDE, TPCS
2	1	05031083	CUTTING EDGE, 4', .75 X 6", CARBIDE TPCS
3	1	05031030	CUTTING EDGE, 10' X .5 X 6", TPCS
4	12	05014553	BOLT, .625-11 X 3", G8, DOME HEAD PLAIN
5	16	050201383	WASHER, .625, LOCK, HEAVY, ZINC
6	16	05020270	NUT, .625-11, G8, HEX, ZINC
7	4	05014551	BOLT, .625-11 X 2.5, G8, DOME HEAD, PLAIN

**0005931 TORSION TRIP EDGE, CARBIDE 11'**

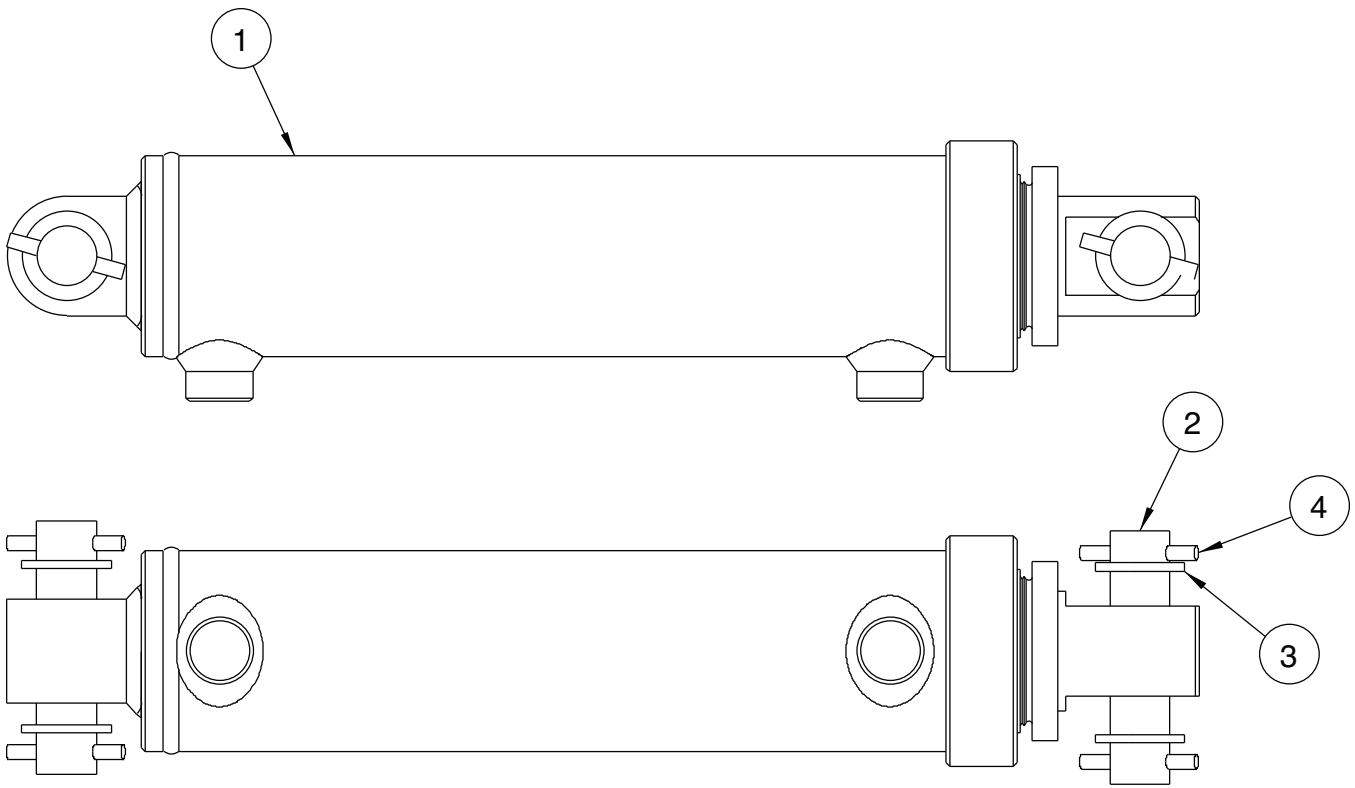
Item	Qty.	Part Number	Description
1	1	05031082	CUTTING EDGE, 3', .75 X 6", CARBIDE, TPCS
2	2	05031083	CUTTING EDGE, 4', .75 X 6", CARBIDE TPCS
3	1	05031031	CUTTING EDGE, 11' X .5 X 6", TPCS
4	13	05014553	BOLT, .625-11 X 3", G8, DOME HEAD PLAIN
5	17	050201383	WASHER, .625, LOCK, HEAVY, ZINC
6	17	05020270	NUT, .625-11, G8, HEX, ZINC
7	4	05014551	BOLT, .625-11 X 2.5, G8, DOME HEAD, PLAIN

**0005932 TORSION TRIP EDGE, CARBIDE 12'**

Item	Qty.	Part Number	Description
1	3	05031083	CUTTING EDGE, 4', .75 X 6", CARBIDE TPCS
2	1	05031032	CUTTING EDGE, 12' X .5 X 6", TPCS
3	14	05014553	BOLT, .625-11 X 3", G8, DOME HEAD PLAIN
4	18	050201383	WASHER, .625, LOCK, HEAVY, ZINC
5	18	05020270	NUT, .625-11, G8, HEX, ZINC
6	4	05014551	BOLT, .625-11 X 2.5, G8, DOME HEAD, PLAIN

**00016768 CUTTING EDGE KIT, 11', .75 X 6, CARBIDE COV**

Item	Qty.	Part Number	Description
1	1	05031082	CUTTING EDGE, 3', .75 X 6", CARBIDE, TPCS
2	2	05031083	CUTTING EDGE, 4', .75 X 6", CARBIDE TPCS
3	2	05031009	CUTTING EDGE, 4' X .5 X 6", TPCS
4	1	05031008	CUTTING EDGE, .5 X 6" X 3', TPCS
5	17	050201383	WASHER, .625, LOCK, HEAVY, ZINC
6	17	05020270	NUT, .625-11, G8, HEX, ZINC
7	17	05014557	BOLT, .625-11 X 4, G8, DH, PLAIN

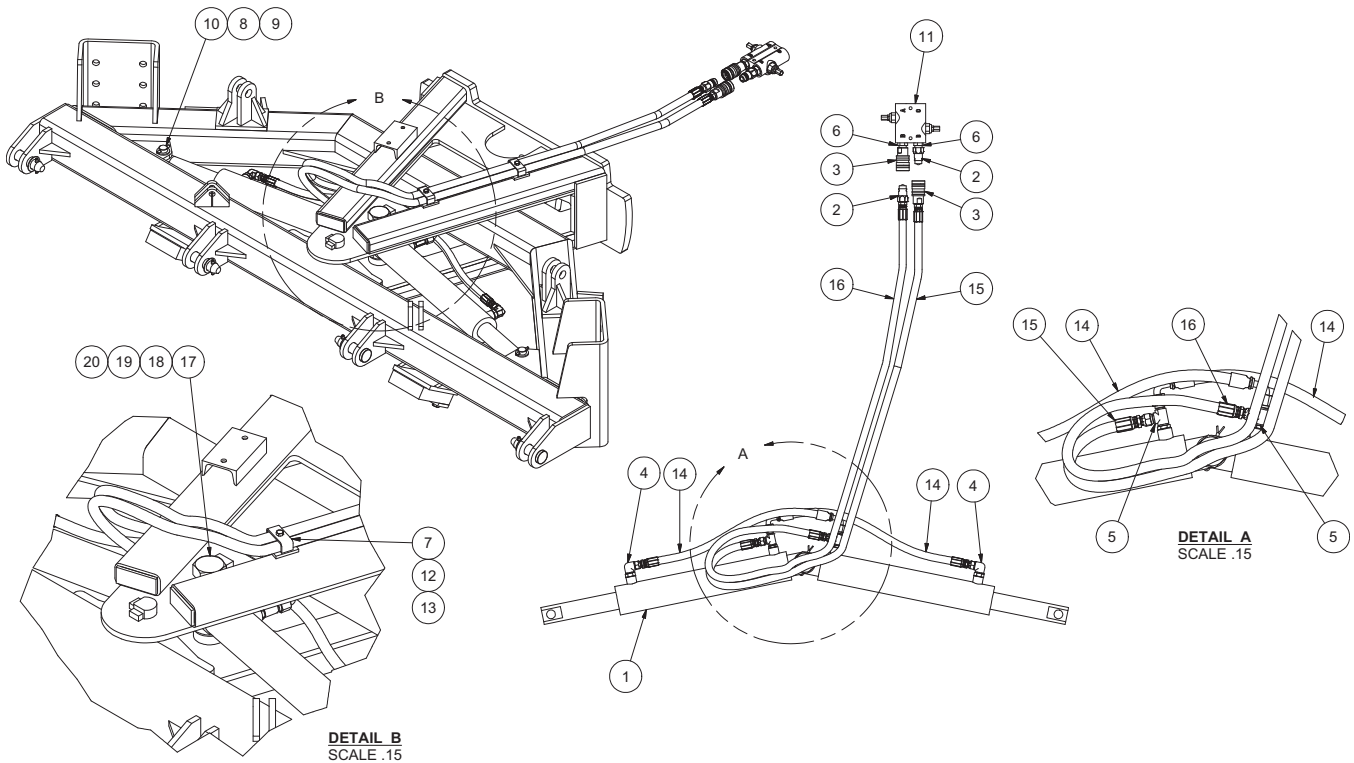


**00050926 REVERSING KIT, 3X10 CYLINDER**

Item	Qty.	Part Number	Description
1	2	05000000	CYLINDER, 3X10, DA <i>See Page 73</i>
2	4	05022040	PIN, 1 X 4.25, NO HEAD
3	8	05021202	BUSHING, 1.5 X 1 X 10GA, ZINC
4	8	05022026	PIN, .25" X 2", ROLL, ZINC
5	1	05043067	CUSHION BLOCK ASSEMBLY, W/ HOSE
6	1	05037080	HOSE ASSEMBLY, PLOW, W/ R608
7	3	00055000	CLIP, HOSE HOLD DOWN
8	3	05010620	BOLT, .3125-18 X 1.5, G8, HHCS, ZINC
9	3	05020909	NUT, .3125-18, GC, TOP LOCK, C&W
10	6	05050608	CABLE TIE

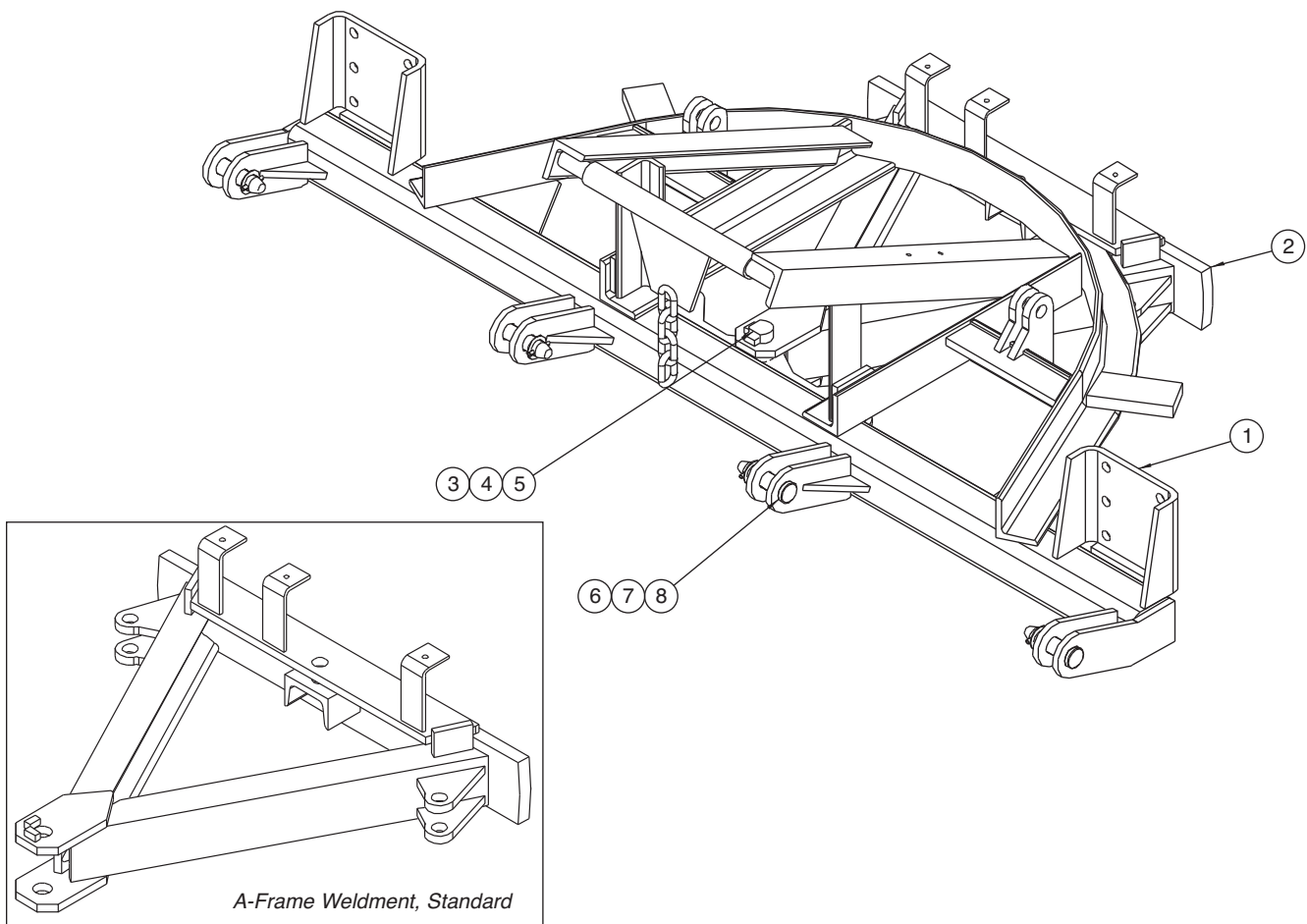
### 00050953 REVERSING KIT, 4X10 CYLINDER

Item	Qty.	Part Number	Description
1	2	05002640	CYLINDER, 4X10, DA <i>See Page 74</i>
2	4	05022040	PIN, 1 X 4.25, NO HEAD
3	8	05021202	BUSHING, 1.5 X 1 X 10GA, ZINC
4	8	05022026	PIN, .25" X 2", ROLL, ZINC
5	1	05043067	CUSHION BLOCK ASSEMBLY, W/ HOSE
6	1	05037080	HOSE ASSEMBLY, PLOW, W/ R608
7	3	00055000	CLIP, HOSE HOLD DOWN
8	3	05010620	BOLT, .3125-18 X 1.5, G8, HHCS, ZINC
9	3	05020909	NUT, .3125-18, GC, TOP LOCK, C&W
10	6	05050608	CABLE TIE



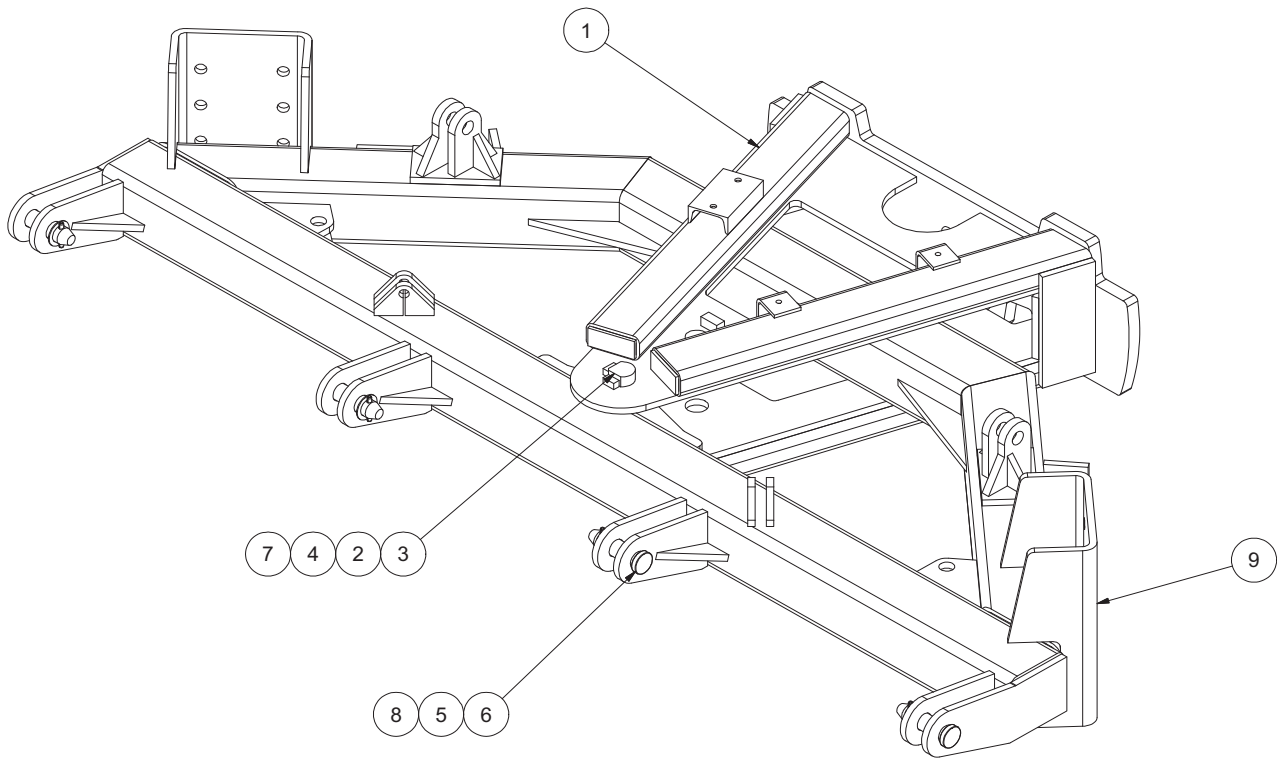
### 00110870 REVERSING KIT, PLOW, 3X15 CYL, NIT, HYD, 5" PUSHFRAME

Item	Qty.	Part Number	Description
1	2	00121641	CYLINDER, 3X15 DA, FOR UPA-FULL <i>See Page 75</i>
2	2	05037297	FITTING, COUPLING, HYD, .5 MNPT
3	2	05037298	FITTING, COUPLING, HYD, .5 FNPT
4	2	6801-8-10	HYD FITTING, ADAPTER, 90
5	2	6804-8-10-8	HYD FITTING, TEE
6	2	6401-10-8	HYD FITTING, .875 ORB, .5
7	2	00055000	CLIP, HOSE HOLD DOWN, REVERSIBLE
8	4	05022026	PIN, .25 X 2 OA, ROLL
9	4	05021202	BUSHING, 1.5 X 1 X 10GA, ZINC
10	2	05022040	PIN, 1.425 NO HEAD
11	1	05043066	VALVE, CUSHION, .875-14 ORB, 30GPM
12	2	05010620	BOLT, .313-18 X 1.5, G8, HHCS, ZINC
13	2	05020909	NUT, .313-18, GC, TOP LOCK, C&W
14	2	05044067	HOSE ASSEMBLY, .5 ID, 26" OAL, 2 WIRE
15	1	05044068	HOSE ASSEMBLY, .5ID, 91" OAL, 2 WIRE
16	1	05044069	HOSE ASSEMBLY, .5 ID, 99" OAL, 2 WIRE
17	1	00121642	BOLT, MOD, 1.5-6 X 8, .250 HOLE
18	1	05020401	NUT, 1.5-6, G2, SLHEX, ZINC
19	1	05022005	PIN, .250 X 3, COTTER
20	2	00110867	BUSHING, 2.5 OD X 1.563 ID X .812



### 00096030 PUSHFRAME KIT, REVERSING, 39 & 44 TT

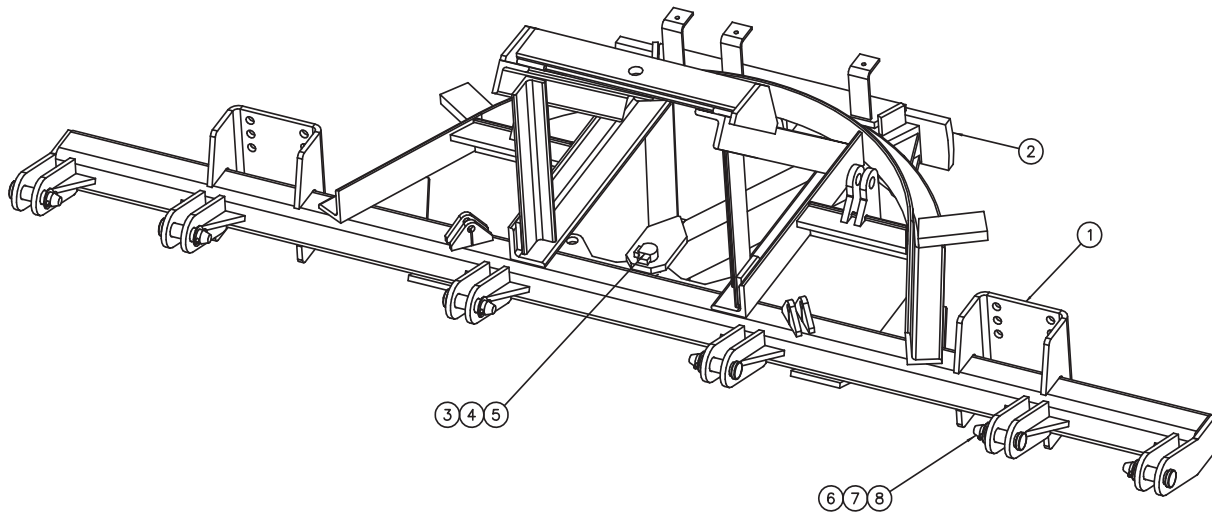
Item	Qty.	Part Number	Description
1	1	00096031	PUSHFRAME WLDMENT, REVERSING
2	1	00027881	A-FRAME WELDMENT, STD, 1.25 PIVOT, 1X5
3	1	05022047	PIN, 1.25 X 3.25, FLAT, HD
4	1	05022044	PIN, .625 X 3, ROLL
5	1	05021316	WASHER, 1.25, FLAT, ZINC
6	4	05022067	PIN, 1.25 X 4.5, FLAT, HD
7	4	05022039	PIN, .3125 X 2 ROLL
8	4	05021191	BUSHING, 1.25, MACHINE, ZINC



**00141350 PUSHFRAME KIT, RVS, TE, 10'-12', 4 ATCH, HD,  
5" TUBE, BLOCK & CHAIN**

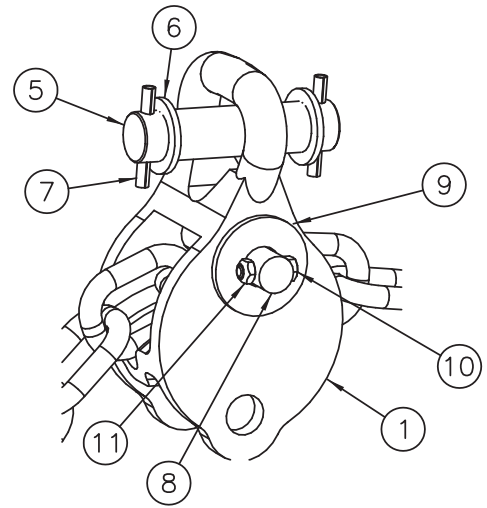
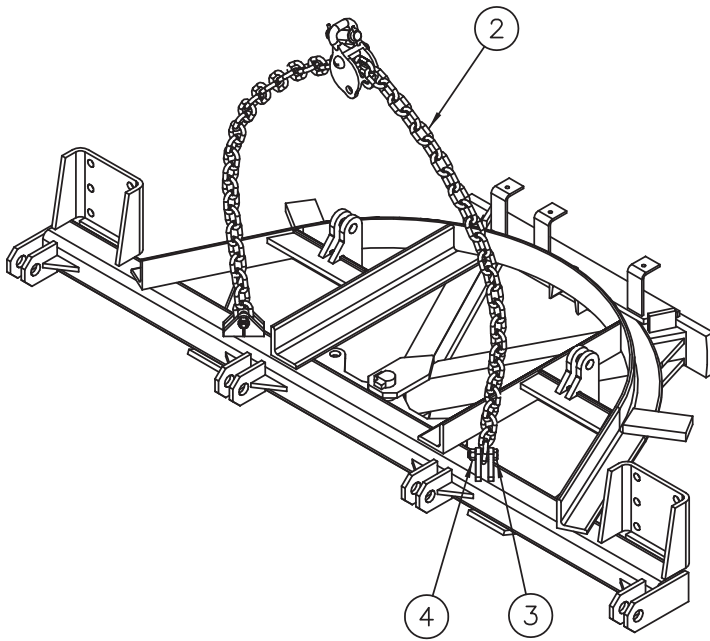
Item	Qty.	Part Number	Description
1	1	00110863	A-FRAME WELDMENT, HD, TUBE STYLE
2	2	00110868	BUSHING, 2.250 OD X 1.313 ID X .688
3	1	00066021	PIN, 1.25 X 8.25, FLAT, HD
4	1	05021316	WASHER, 1.25, FLAT, ZINC
5	4	05021191	BUSHING, MACHINE, 1.88 X 1.25 X 14GA, ZINC
6	4	05022067	PIN, 1.242 X 4.835, FLAT, HD, ZINC
7	1	05022044	PIN, .313 X 3, ROLL, ZINC
8	4	05022039	PIN, .313 X 2, ROLL, ZINC
9	1	00110851	PUSHFRAME WELDMENT, RVS, TE, 10'-12'
10	1	00066508	LIFT KIT, BLOCK & CHAIN <i>See Page 16</i>





### 00157370 PUSHFRAME KIT, RVS, TT, 12'

Item	Qty.	Part Number	Description
1	1	00157371	PUSHFRAME WELDMENT, RVS, TE, 12'
2	1	00027881	A-FRAME WELDMENT, STD, 1.25 PIVOT
3	1	05022047	PIN, 1.25 X 6.438 FLAT HEAD ZINC
4	1	05022044	PIN, .313 X 3 ROLL
5	1	05021316	WASHER, 1.25 FLAT, ZINC
6	6	05022067	PIN, 1.242 4.835 FLAT HEAD ZINC
7	6	05022039	PIN, ROLL, .313 X 2 OA
8	6	05021191	BUSHING, MACH, 1.88 X 1.25 X 14GA, ZINC

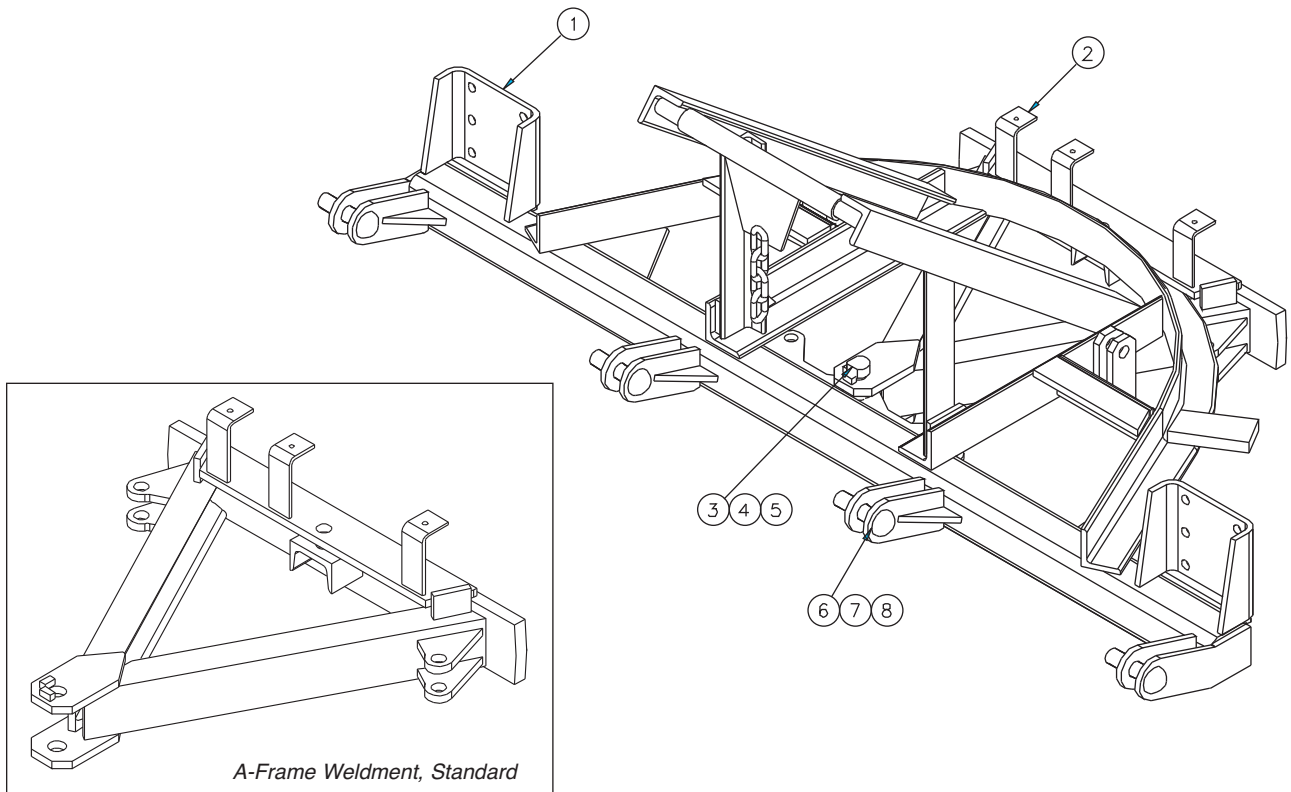


### 00066508 LIFT KIT & CHAIN

Item	Qty.	Part Number	Description
1	1	05034025	BLOCK, CHAIN, CASTING CONTINUOUS CHAIN PLOW LIFT
2	1	00043175	CHAIN, HIGH TEST, GR 43, .5 X 10', ZINC PLATED DOMESTIC
3	2	05010741	BOLT, .625-11 X 2.5, G8, HHCS, ZINC
4	2	05020837	NUT, .625-11, GC, TOP LOCK, C&W
5	1	05022040	PIN, 1 X 4.25 NO HEAD, ZINC
6	2	05021202	BUSHING, MACHINE, 1.5 X 1 X 10GA, ZINC, NARROW RIM
7	2	05022026	PIN, .25 X 2, ROLL, ZINC, CARBON SPRING STEEL
8	1	05022119	PIN, .75 X 3.75, BUTTON HEAD, ZINC PLATED, COMPRESSION TRIP EDGE
9	1	05021312	WASHER, .750, FLAT, ZINC
10	1	05010593	BOLT, .25-20 X 1, G8, HHCS, ZINC
11	1	05020899	NUT, .25-20, TOP LOCK, ZINC

**00038926 CABLE LIFT KIT, .5" X 12'**

Item	Qty.	Part Number	Description
1	1	00038922	SHEAVE WELDMENT, DEAD, CABLE LIFT
2	1	00050483	CABLE, .5" DIA X 12', FIBER CORE
3	4	05051000	CLAMP, CABLE, .5" MALEABLE IRON
4	2	05050097	THIMBLE, CABLE, FOR .5" CABLE
5	2	05050126	SHACKLE, .625 SCREW PIN, GALV
6	4	05051000	CLAMP, CABLE, .5" FORGED STEEL
7	2	05050097	THIMBLE CABLE, .5"
8	2	05010741	BOLT, .625-11 X 2.5" G8, HHCS, ZINC
9	2	05020837	NUT, .625-11, GC, TOP LOCK, C&W



### 00050454 PUSHFRAME KIT, REVERSING, 51TT

Item	Qty.	Part Number	Description
1	1	00038007	PUSHFRAME WELDMENT, REVERSING
2	1	00027881	A-FRAME WELDMENT, STD, 1.25 PIVOT, 1X5
3	1	05022047	PIN, 1.25 X 6.438, FLAT, HD
4	1	05022044	PIN, .313 X 3 ROLL
5	1	05021316	WASHER, 1.25, FLAT, ZINC
6	4	05022067	PIN, 1.25 X 4.835, FLAT, HD
7	4	05022039	PIN, .3125 X 2, ROLL
8	4	05021191	BUSHING, 1.25 MACHINE, ZINC

**0050466 STABILIZER ARM KIT  
COMPRESSION TRIP EDGE AND TORSION TRIP EDGE**

Item	Qty.	Part Number	Description
1	2	00094829	SUPPORT ARM WELDMENT
2	4	05022051	PIN 1 X 3.25 FLAT HD
3	4	05022026	PIN, .25 X 2, ROLL, ZINC
4	4	05021202	BUSHING, 1, 10GA, MACHINE

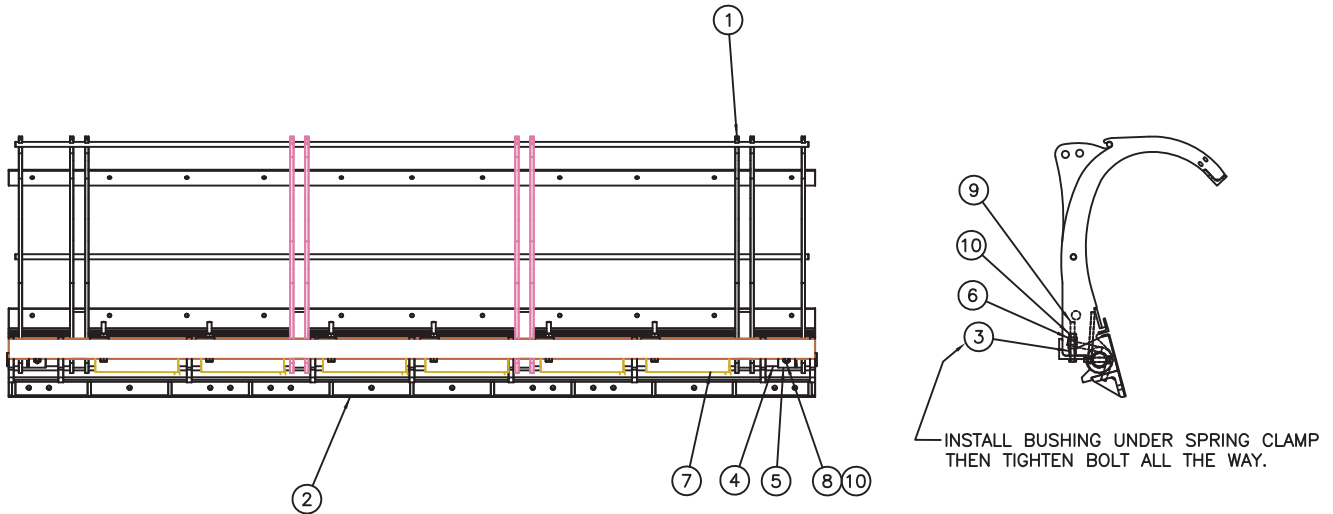
---

# **Reversible J-Style Torsion Trip Edge**

---

## PLOW, J-STYLE TORSION TRIP EDGE

Item	Qty.	Part Number	Description
1	1	00037716	MOLDBOARD ASSEMBLY, PLOW, MPPJ39R10-ISTT SEE PAGE 30
		00061470	MOLDBOARD ASSEMBLY, PLOW, MPJ39R10-ISTT SEE PAGE 30
		00037717	MOLDBOARD ASSEMBLY, PLOW, MPPJ39R11-ISTT SEE PAGE 30
		00061471	MOLDBOARD ASSEMBLY, PLOW, MPJ39R11-ISTT SEE PAGE 30
		00037718	MOLDBOARD ASSEMBLY, PLOW, MPPJ39R12-ISTT SEE PAGE 30
		00061472	MOLDBOARD ASSEMBLY, PLOW, MPJ39R12-ISTT SEE PAGE 30
		00061484	MOLDBOARD ASSEMBLY, PLOW, MPPJ45R10-ISTT SEE PAGE 30
		00084400	MOLDBOARD ASSEMBLY, PLOW, MPJ45R10-ISTT SEE PAGE 30
		00061485	MOLDBOARD ASSEMBLY, PLOW, MPPJ45R11-ISTT SEE PAGE 30
		00120415	MOLDBOARD ASSEMBLY, PLOW, MPPJ45R11-ISTT SEE PAGE 30
		00082811	MOLDBOARD ASSEMBLY, PLOW, MPJ45R11-ISTT SEE PAGE 30
		00061486	MOLDBOARD ASSEMBLY, PLOW, MPPJ45R12-ISTT SEE PAGE 30
		00084427	MOLDBOARD ASSEMBLY, PLOW, MPJ45R12-ISTT SEE PAGE 30
		00084430	MOLDBOARD ASSEMBLY, PLOW, MPJ45R12-ISTT SEE PAGE 30
00157348	MOLDBOARD ASSEMBLY, PLOW, MPJ45R12-ISTT SEE PAGE 30		
2	1	00061496	POLY KIT, PLOW, 10', MPPJ39 SEE PAGE 31
		00061404	POLY KIT, PLOW, 11', MPPJ39 SEE PAGE 31
		00061497	POLY KIT, PLOW, 12', MPPJ39 SEE PAGE 31
		00061492	POLY KIT, PLOW, 10', MPPJ45 SEE PAGE 31
		00061493	POLY KIT, PLOW, 11', MPPJ45 SEE PAGE 31
		00061494	POLY KIT, PLOW, 12', MPPJ45 SEE PAGE 31
3	1	00061495	CUTTING EDGE KIT, 10', .625 X 8, CPCS SEE PAGE 32
		00057905	CUTTING EDGE KIT, 11', .625 X 8, CPCS SEE PAGE 32
		00035762	CUTTING EDGE KIT, 12', .625 X 8, CPCS SEE PAGE 32
4	1	00051280-A	SUPPORT ARM KIT, PLOW, MPPJ39/45 SEE PAGE 37
5	1	00050926	REVERSING KIT, PLOW, 3X10 CYL SEE PAGE 35
6	1	00135932	PUSHFRAME KIT, RVS, TT, 10'-12' SEE PAGE 39
7	1	05050095	TAG, SERIAL NUMBER
8	1	00055962	DECAL KIT, PLOW SEE PAGE 76



### MOLDBOARD ASSEMBLY, PLOW, MPPJ

Item	Qty.	Part Number	Description
1	1	00037703	MOLDBOARD WELDMENT, PLOW, MPPJ39R10-ISTT
		00037704	MOLDBOARD WELDMENT, PLOW, MPPJ39R11-ISTT
		00037715	MOLDBOARD WELDMENT, PLOW, MPPJ39R12-ISTT
		00061467	MOLDBOARD WELDMENT, PLOW, MPJ39R10-ISTT
		00061468	MOLDBOARD WELDMENT, PLOW, MPJ39R11-ISTT
		00061469	MOLDBOARD WELDMENT, PLOW, MPJ39R12-ISTT
		00025514	MOLDBOARD WELDMENT, PLOW, MPPJ45R10-ISTT
		00025515	MOLDBOARD WELDMENT, PLOW, MPPJ45R11-ISTT
		00120416	MOLDBOARD WELDMENT, PLOW, MPPJ45R11-ISTT
		00025516	MOLDBOARD WELDMENT, PLOW, MPPJ45R12-ISTT
		00157349	MOLDBOARD WELDMENT, PLOW, MPPJ45R12-ISTT
		00084401	MOLDBOARD WELDMENT, PLOW, MPJ45R10-ISTT
		00082812	MOLDBOARD WELDMENT, PLOW, MPJ45R11-ISTT
		00084428	MOLDBOARD WELDMENT, PLOW, MPJ45R12-ISTT
		00084431	MOLDBOARD WELDMENT, PLOW, MPJ45R12-ISTT
2	1	00119780 00119781 00017646	TRIP EDGE WELDMENT, PLOW, 10' TRIP EDGE WELDMENT, PLOW, 11' TRIP EDGE WELDMENT, PLOW, 12'
3	6	00031115-B	BUSHING, HITCH, HUSTING, MS
4	1	00128401 00126052 00111187	HINGE, PLOW, MPPJ, 10' HINGE, PLOW, MPPJ, 11' HINGE, PLOW, MPPJ, 12'
5	2	00111188	COLLAR HINGE, PLOW, MPPJ
6	6	00061481	CLAMP, SPRING, PLOW, MPPJ, SQUARE
7	6	05035110	SPRING, TORSION, .750 SQ WIRE
8	2	05010745	BOLT, .625-11 X 3.5, G8, HHCS, ZINC
9	6	05016109	BOLT, .625-11 X 5.5, G8, HHCS, ZINC
10	8	05020837	NUT, .625-11, GC, TOP LOCK, C&W



## POLY KITS

Item	Qty.	Part Number	Description
1	1	00077263 00077264 00077265	POLY, .375 X 42.250 X 120 POLY, .375 X 42.250 X 132 POLY, .375 X 42.250 X 144
		05051164 05051165 05051166	POLY, .375 X 48 X 120 POLY, .375 X 48 X 132 POLY, .375 X 48 X 144
2	22 FOR 10' 26 FOR 11' & 12'	05014042	BOLT, .5-13 X 1.50, G5, CARRIAGE, ZINC
3	22 FOR 10' 26 FOR 11' & 12'	05020609	NUT, .5-13, G2, SPINLOCK, ZINC

**00061495 J-STYLE TORSION TRIP EDGE, CUTTING EDGE 10'**

Item	Qty.	Part Number	Description
1	1	05031015	CUTTING EDGE, .625 X 8 X 10', CPCS
2	12	05014551	BOLT, .625-11 X 2.5, G8, DOMEHEAD PLAIN
3	12	05021383	WASHER, .625, LOCK, HEAVY, ZINC
4	12	05020270	NUT, .625-11, G8, HEX, ZINC

**00057905 J-STYLE TORSION TRIP EDGE, CUTTING EDGE 11'**

Item	Qty.	Part Number	Description
1	1	05031016	CUTTING EDGE, .625 X 8 X 11', CPCS
2	13	05014551	BOLT, .625-11 X 2.5, G8, DOMEHEAD PLAIN
3	13	05021383	WASHER, .625, LOCK, HEAVY, ZINC
4	13	05020270	NUT, .625-11, G8, HEX, ZINC

**00035762 J-STYLE TORSION TRIP EDGE, CUTTING EDGE 12'**

Item	Qty.	Part Number	Description
1	1	05031017	CUTTING EDGE, .625 X 8 X 12', CPCS
2	14	05014551	BOLT, .625-11 X 2.5, G8, DOMEHEAD PLAIN
3	14	05021383	WASHER, .625, LOCK, HEAVY, ZINC
4	14	05020270	NUT, .625-11, G8, HEX, ZINC

**00055905 J-STYLE TORSION TRIP EDGE, RUBBER W/ COVER BLADE 10'**

Item	Qty.	Part Number	Description
1	1	05021022	CUTTING EDGE, 10', 1.5 X 10, RUBBER
2	1	05031030	CUTTING EDGE, 10', .5 X 6, TPCS
3	12	05014560	BOLT, .625-11 X 5, G8, DOME HEAD PLAIN
4	12	05021383	WASHER, .625, LOCK, HEAVY, ZINC
5	12	05020270	NUT, .625-11, G8, HEX, ZINC

**00055926 J-STYLE TORSION TRIP EDGE, RUBBER W/ COVER BLADE 11'**

Item	Qty.	Part Number	Description
1	1	05021023	CUTTING EDGE, 11', 1.5 X 10, RUBBER
2	1	05031031	CUTTING EDGE, 11', .5 X 6, TPCS
3	13	05014560	BOLT, .625-11 X 5, G8, DOME HEAD PLAIN
4	13	05021383	WASHER, .625, LOCK, HEAVY, ZINC
5	13	05020270	NUT, .625-11, G8, HEX, ZINC

**00055927 J-STYLE TORSION TRIP EDGE, RUBBER W/ COVER BLADE 12'**

Item	Qty.	Part Number	Description
1	1	05031024	CUTTING EDGE, 12', 1.5 X 10, RUBBER
2	1	05031032	CUTTING EDGE, 12', .5 X 6, TPCS
3	14	05014560	BOLT, .625-11 X 5, G8, DOME HEAD PLAIN
4	14	05021383	WASHER, .625, LOCK, HEAVY, ZINC
5	14	05020270	NUT, .625-11, G8, HEX, ZINC

**0005930 TORSION TRIP EDGE, CARBIDE 10'**

Item	Qty.	Part Number	Description
1	2	05031082	CUTTING EDGE, 3', .75 X 6", CARBIDE, TPCS
2	1	05031083	CUTTING EDGE, 4', .75 X 6", CARBIDE TPCS
3	1	05031030	CUTTING EDGE, 10' X .5 X 6", TPCS
4	12	05014553	BOLT, .625-11 X 3", G8, DOME HEAD PLAIN
5	16	050201383	WASHER, .625, LOCK, HEAVY, ZINC
6	16	05020270	NUT, .625-11, G8, HEX, ZINC
7	4	05014551	BOLT, .625-11 X 2.5, G8, DOME HEAD, PLAIN

**0005931 TORSION TRIP EDGE, CARBIDE 11'**

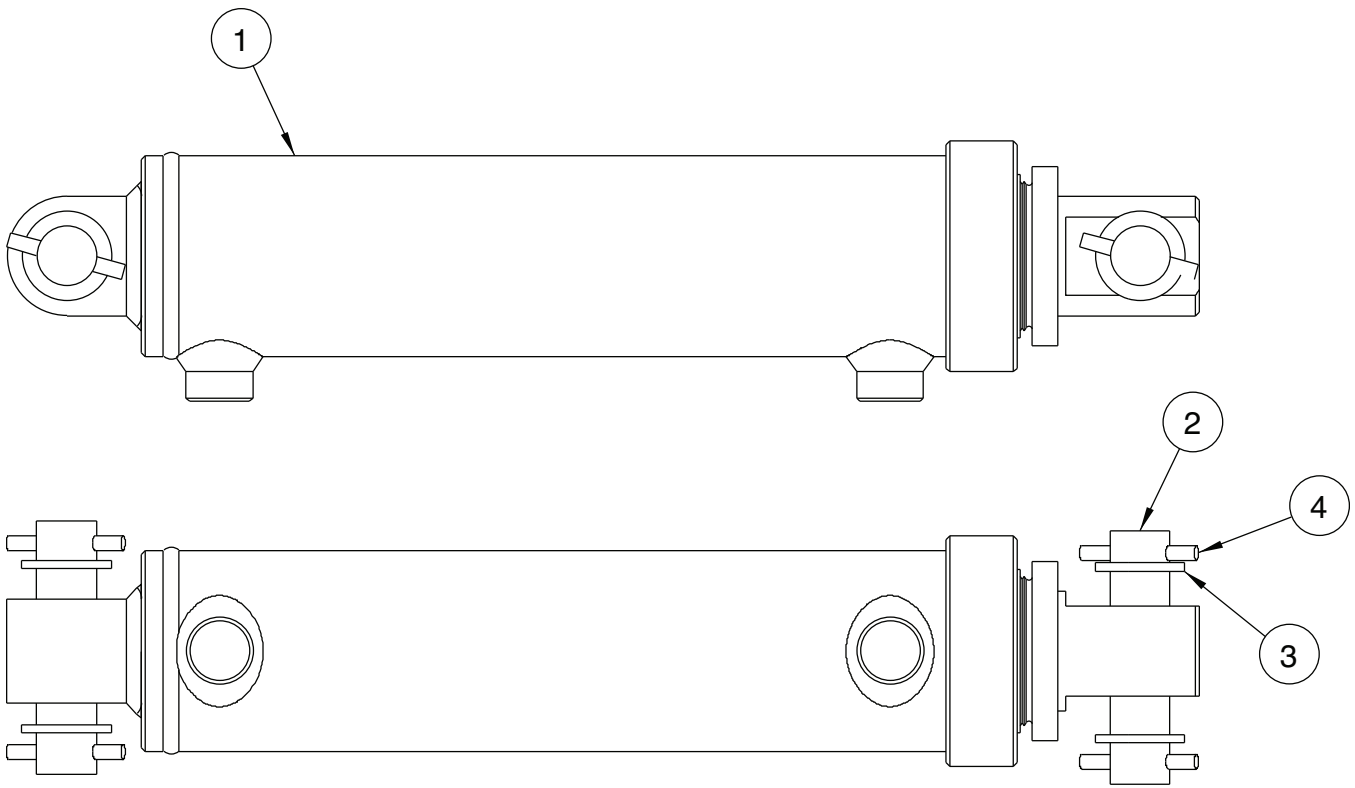
Item	Qty.	Part Number	Description
1	1	05031082	CUTTING EDGE, 3', .75 X 6", CARBIDE, TPCS
2	2	05031083	CUTTING EDGE, 4', .75 X 6", CARBIDE TPCS
3	1	05031031	CUTTING EDGE, 11' X .5 X 6", TPCS
4	13	05014553	BOLT, .625-11 X 3", G8, DOME HEAD PLAIN
5	17	050201383	WASHER, .625, LOCK, HEAVY, ZINC
6	17	05020270	NUT, .625-11, G8, HEX, ZINC
7	4	05014551	BOLT, .625-11 X 2.5, G8, DOME HEAD, PLAIN

**0005932 TORSION TRIP EDGE, CARBIDE 12'**

Item	Qty.	Part Number	Description
1	3	05031083	CUTTING EDGE, 4', .75 X 6", CARBIDE TPCS
2	1	05031032	CUTTING EDGE, 12' X .5 X 6", TPCS
3	14	05014553	BOLT, .625-11 X 3", G8, DOME HEAD PLAIN
4	18	050201383	WASHER, .625, LOCK, HEAVY, ZINC
5	18	05020270	NUT, .625-11, G8, HEX, ZINC
6	4	05014551	BOLT, .625-11 X 2.5, G8, DOME HEAD, PLAIN

**00057622 CUTTING EDGE KIT, 12', .750 X 6 CARBIDE**

Item	Qty.	Part Number	Description
1	3	05031083	CUTTING EDGE, 4', .75 X 6", CARBIDE TPCS
2	1	05031032	CUTTING EDGE, 12' X .5 X 6", TPCS
3	4	05014553	BOLT, .625-11 X 3", G8, DOME HEAD PLAIN
4	18	050201383	WASHER, .625, LOCK, HEAVY, ZINC
5	18	05020270	NUT, .625-11, G8, HEX, ZINC
6	4	05014555	BOLT, .625-11 X 3.5 DOME HEAD PLAIN

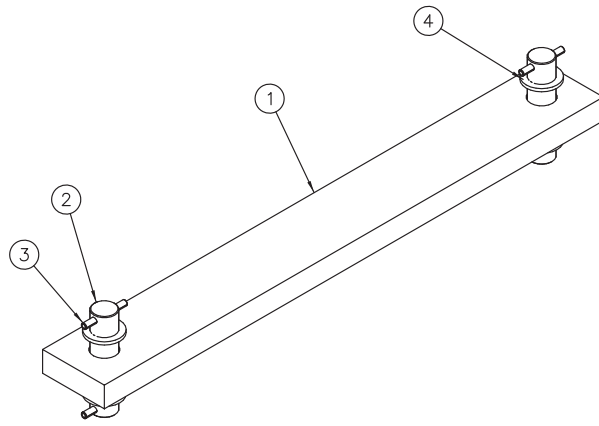


**00050926 REVERSING KIT, 3X10 CYLINDER**

Item	Qty.	Part Number	Description
1	2	05000000	CYLINDER, 3X10, DA <i>See Page 73</i>
2	4	05022040	PIN, 1 X 4.25, NO HEAD
3	8	05021202	BUSHING, 1.5 X 1 X 10GA, ZINC
4	8	05022026	PIN, .25" X 2", ROLL, ZINC
5	1	05043067	CUSHION BLOCK ASSEMBLY, W/ HOSE
6	1	05037080	HOSE ASSEMBLY, PLOW, W/ R608
7	3	00055000	CLIP, HOSE HOLD DOWN
8	3	05010620	BOLT, .3125-18 X 1.5, G8, HHCS, ZINC
9	3	05020909	NUT, .3125-18, GC, TOP LOCK, C&W
10	6	05050608	CABLE TIE

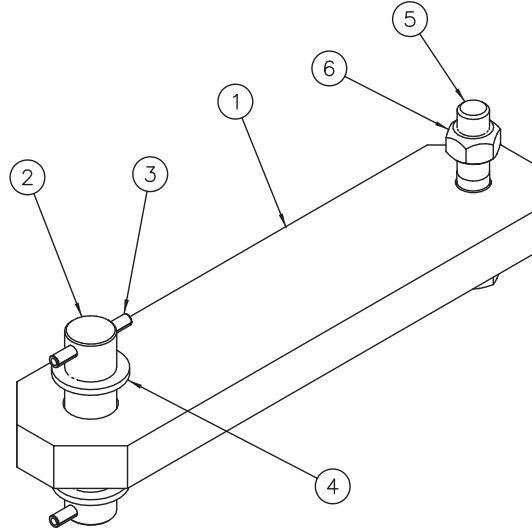
**00050953 REVERSING KIT, 4X10 CYLINDER**

Item	Qty.	Part Number	Description
1	2	05002640	CYLINDER, 4X10, DA <i>See Page 74</i>
2	4	05022040	PIN, 1 X 4.25, NO HEAD
3	8	05021202	BUSHING, 1.5 X 1 X 10GA, ZINC
4	8	05022026	PIN, .25" X 2", ROLL, ZINC
5	1	05043067	CUSHION BLOCK ASSEMBLY, W/ HOSE
6	1	05037080	HOSE ASSEMBLY, PLOW, W/ R608
7	3	00055000	CLIP, HOSE HOLD DOWN
8	3	05010620	BOLT, .3125-18 X 1.5, G8, HHCS, ZINC
9	3	05020909	NUT, .3125-18, GC, TOP LOCK, C&W
10	6	05050608	CABLE TIE



### 00051280-A SUPPORT ARM KIT, PLOW, MPJ39/J45

Item	Qty.	Part Number	Description
1	2	00051281-A	SUPPORT ARM, PLOW, MPJ39, BLACK
2	4	05022040	PIN, 1 X 4.25 NO HEAD
3	8	05022026	PIN, .250 X 2, ROLL, ZINC
4	8	05021202	BUSHING, 1.5 X 1 X 10GA, ZINC

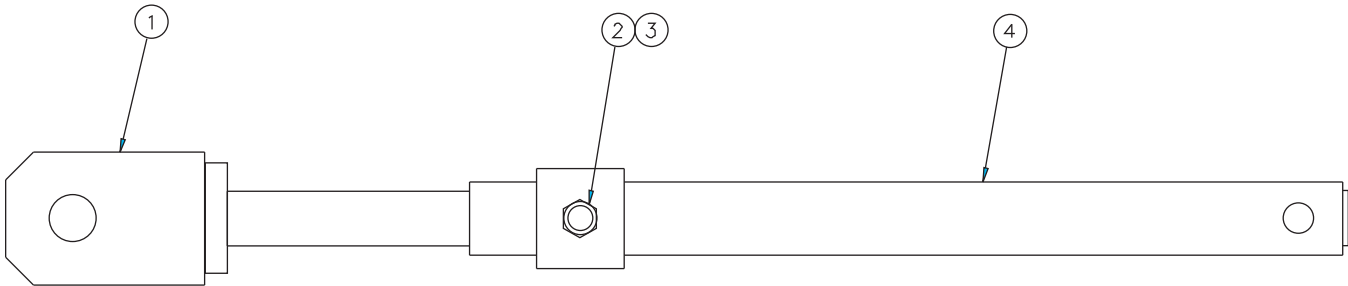


### 00139839 SUPPORT ARM KIT, PLOW, MPJ, PLG

Item	Qty.	Part Number	Description
1	2	00139840	SUPPORT ARM, PLOW, MPJ, PLG
2	2	05022040	PIN, 1 X 4.25 NO HEAD
3	4	05022026	PIN, .250 X 2, OA ROLL
4	4	05021202	BUSHING, 1.5 X 1 X 10GA, ZINC
5	2	05010745	BOLT, .625-11 X 3.5, G8, HHCS, ZINC
6	2	05020837	NUT, .625-11, GC, TOP LOCK, C&W

### 00057927 & 00057928 SUPPORT ARM KIT, J-STYLE

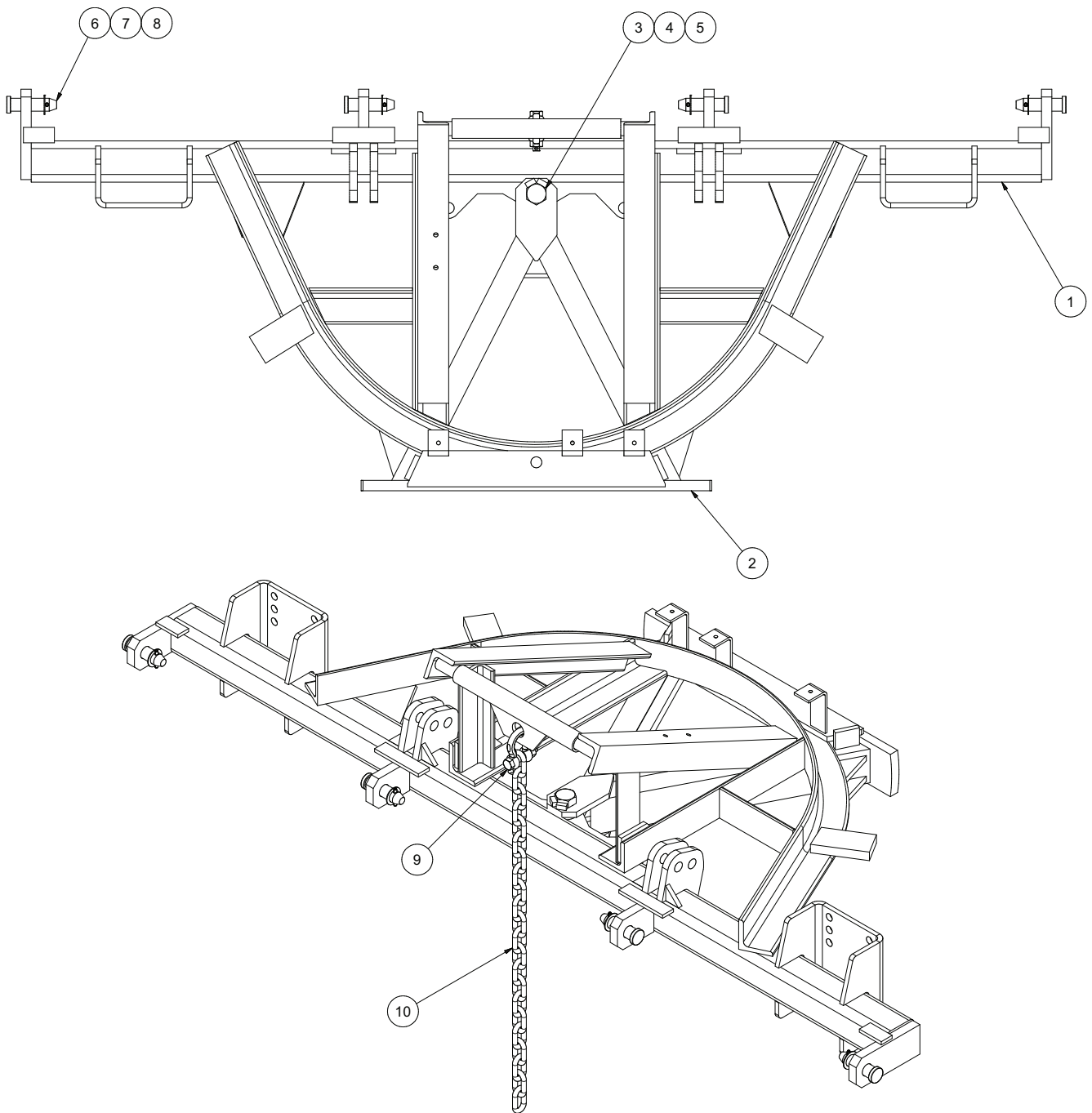
Item	Qty.	Part Number	Description
1	2	00043100 00043101	SUPPORT ARM ASSEMBLY, MPPH39R SUPPORT ARM ASSEMBLY, MPPH45R <i>See Below</i>
2	2	05022051	PIN, 1 X 3.25, FLAT, HD
3	2	05022026	PIN, .25 X 2, ROLL,ZINC
4	2	05021202	BUSHING, 1.5 X 1 X 10GA, ZINC
5	2	05010745	BOLT, .625-11 X 3.5, G8, HHCS, ZINC
6	2	05020837	NUT, .625-11, GC, TOP LOCK, C&W



### 00043100 & 00043101 SUPPORT ARM ASSEMBLY

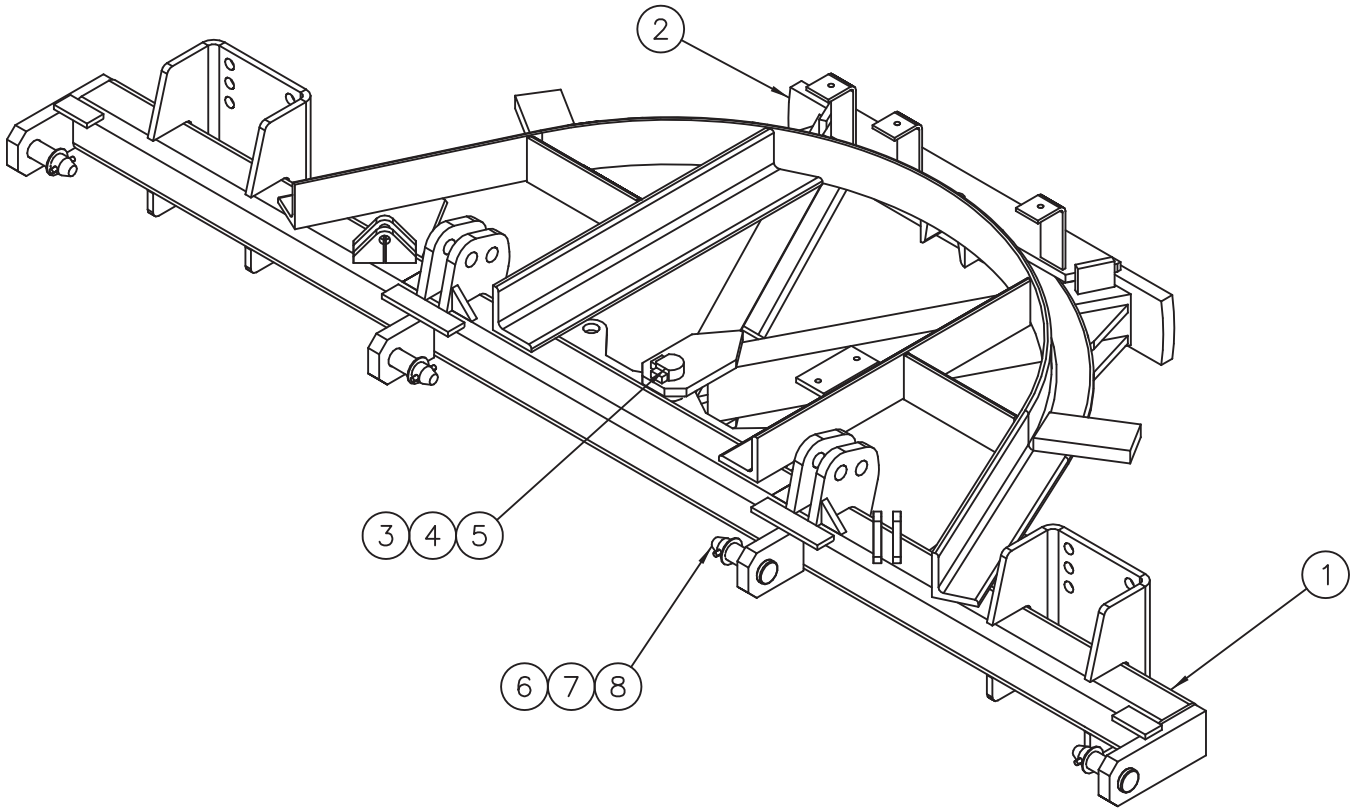
Item	Qty.	Part Number	Description
1	1	00025508	INNER ROD SUPPORT ARM WELDMENT
2	1	05010697	BOLT, .5-13 X 3, G8, HHCS, ZINC
3	1	05020847	NUT, .5-13, GC, TOP LOCK, C&W
4	1	00043102 00025513	OUTER ARM PIPE WELDMENT, MPPH39R OUTER ARM PIPE WELDMENT, MPPH45R





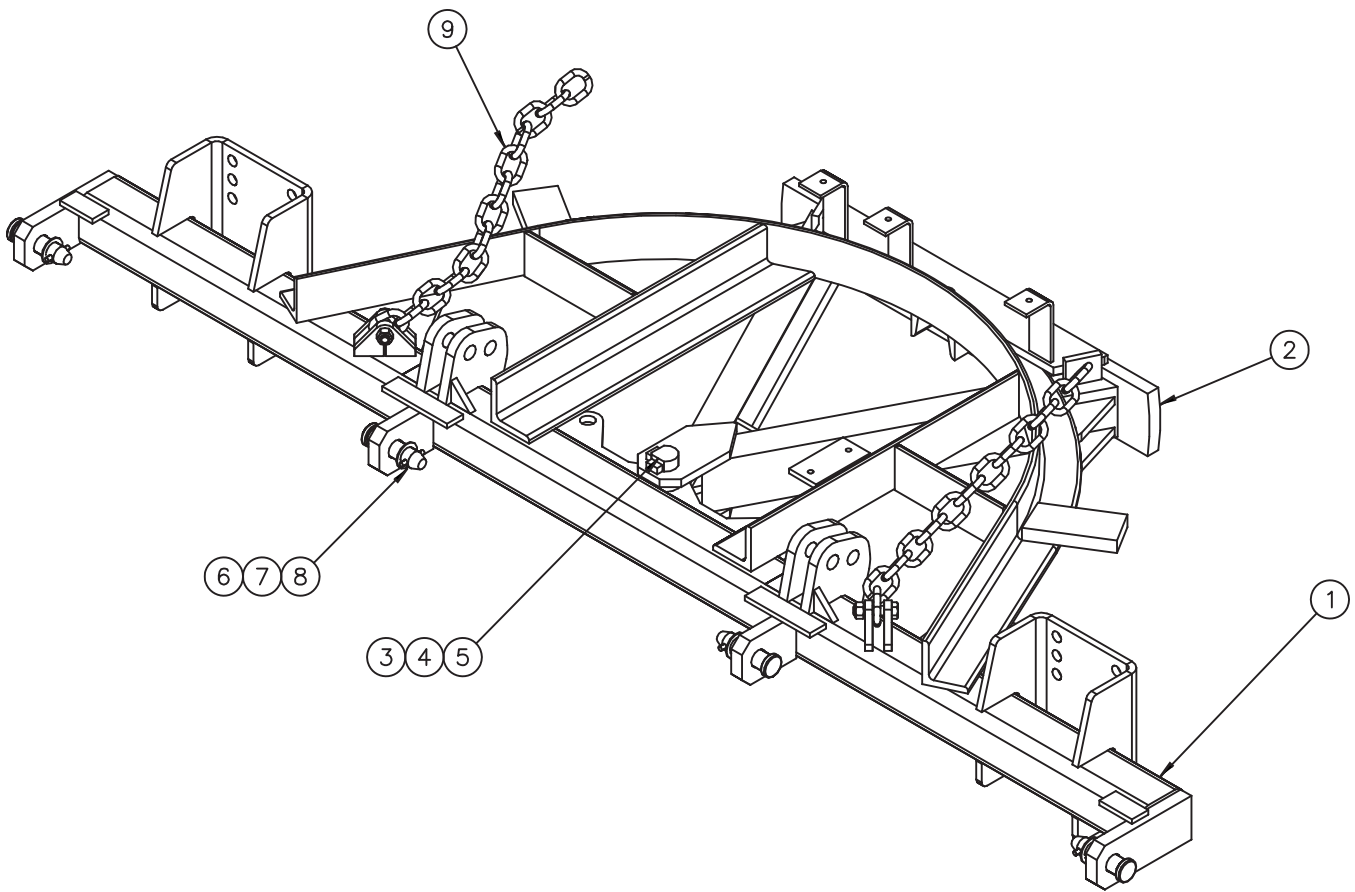
**00135932 PUSHFRAME KIT, RVS, TT, 10'-12', 4 ATCH, LL,  
J-STYLE SOLID STAB**

Item	Qty.	Part Number	Description
1	1	00135931	PUSHFRAME WELDMENT, RVS, TT, 10'-12'
2	1	00121692	A-FRAME WELDMENT, STD, 1.25 PIVOT
3	1	05010861	BOLT, 1.25-7 X 9, G8, HHCS, ZINC
4	1	05020835	NUT, 1.25-7, GC, TOP LOCK, C&W
5	1	05021316	WASHER, 1.25, FLAT, ZINC
6	4	05022067	PIN, 1.242 X 4.835, FLAT, HD, ZINC
7	4	05022039	PIN, .313 X 2, ROLL, ZINC
8	4	05021191	BUSHING, MACH, 1.88 X 1.25 X 14GA, ZINC
9	1	05050126	SHACKLE, .625, BOLT, T-TYPE, GALV
10	1	00094871	CHAIN, HIGH TEST, .5 X 42



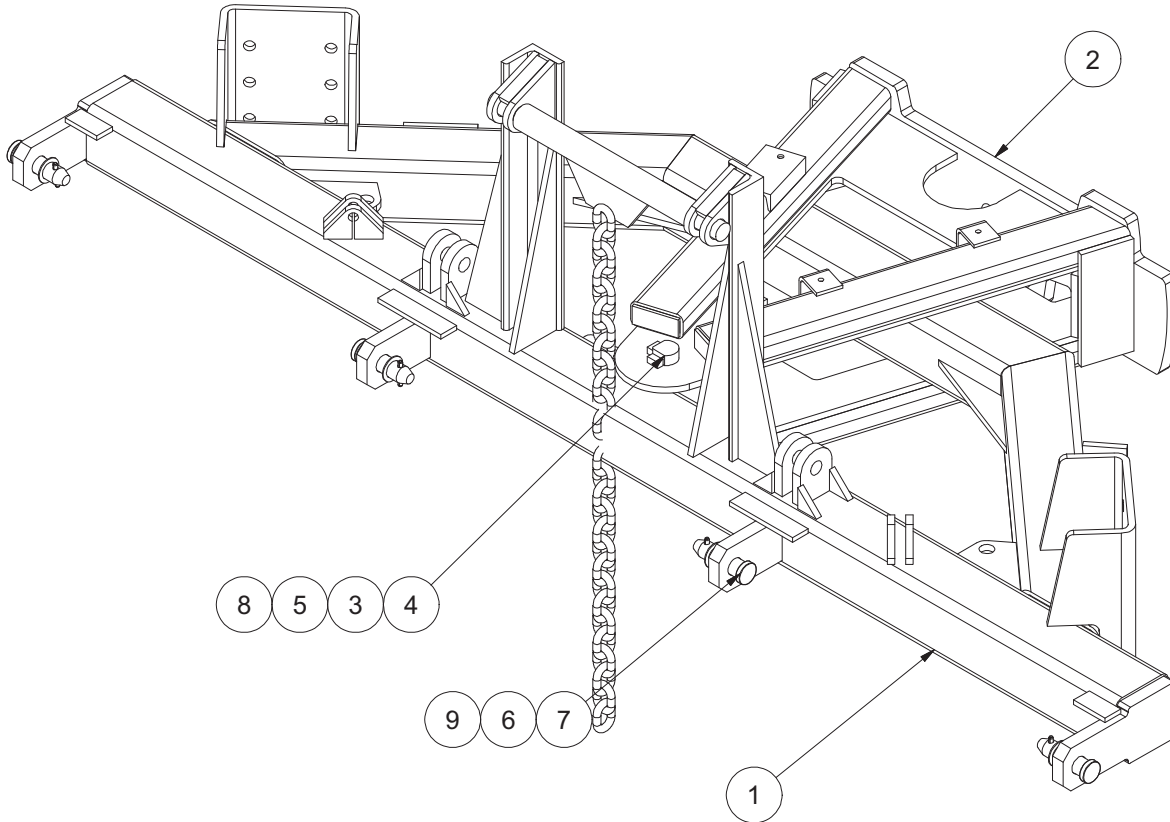
**00137684 PUSHFRAME KIT, RVS, TT, 10'-12', 4 ATCH NO LL, J-STYLE BAR ARM**

Item	Qty.	Part Number	Description
1	1	00137685	PUSHFRAME WELDMENT, RVS, TT, 10'-12'
2	1	00027881	A-FRAME WELDMENT, STD, 1.25 PIVOT
3	1	05022044	PIN, .313 X 3, ROLL
4	1	05022047	PIN, 1.25 X 6.438, FLAT, HEAD, ZINC
5	1	05021316	WASHER, 1.25, FLAT, ZINC
6	4	05022067	PIN, 1.242 FLAT, HEAD, ZINC
7	4	05022039	PIN, ROLL, .313 X 2 OA
8	4	05021191	BUSHING, MACHINE, 1.88 X 1.25 X 14GA, ZINC



**00141357 PUSHFRAME KIT, RVS, TT, 10'-12', 4 ATCH**

Item	Qty.	Part Number	Description
1	1	00137685	PUSHFRAME WELDMENT, RVS, TT, 10'-12'
2	1	00027881	A-FRAME WELDMENT, STD, 1.25 PIVOT
3	1	05022044	PIN, .313 X 3, ROLL
4	1	05022047	PIN, 1.25 X 6.438 FLAT HEAD ZINC
5	1	05021316	WASHER, 1.25 FLAT ZINC
6	4	05022067	PIN 1.242 4.835 FLAT HD ZINC
7	4	05022039	PIN ROLL, .313 X 2 OA
8	4	05021191	BUSHING MACH 1.88 X 1.25 X 14GA, ZINC
9	1	00055943	LIFT KIT, 2 CHAIN



**00139858 PUSHFRAME KIT, PLOW, 3 X 15 CYL**

ITEM	QTY	PART NUMBER	DESCRIPTION
1	1	00139859	PUSHFRAME WLDMT,RVS,TT,10'-12'
2	1	00110863	A-FRAME WLDMT,HD,TUBE STYLE
3	2	00110868	BUSHING 2.250 ODx1.313 IDx.688
4	1	00066021	PIN 1.25 x 8.25 FLAT HD
5	1	05021316	WASHER 1.25 FLAT ZC
6	4	05021191	BUSHING,MACH,1.88x1.25x14GA,ZC
7	4	05022067	PIN 1.242 x 3.370GL x 4.835,ZC
8	1	05022044	PIN .313 x 3.000 ROLL ZC
9	4	05022039	PIN .313 x 2.000 ROLL ZC



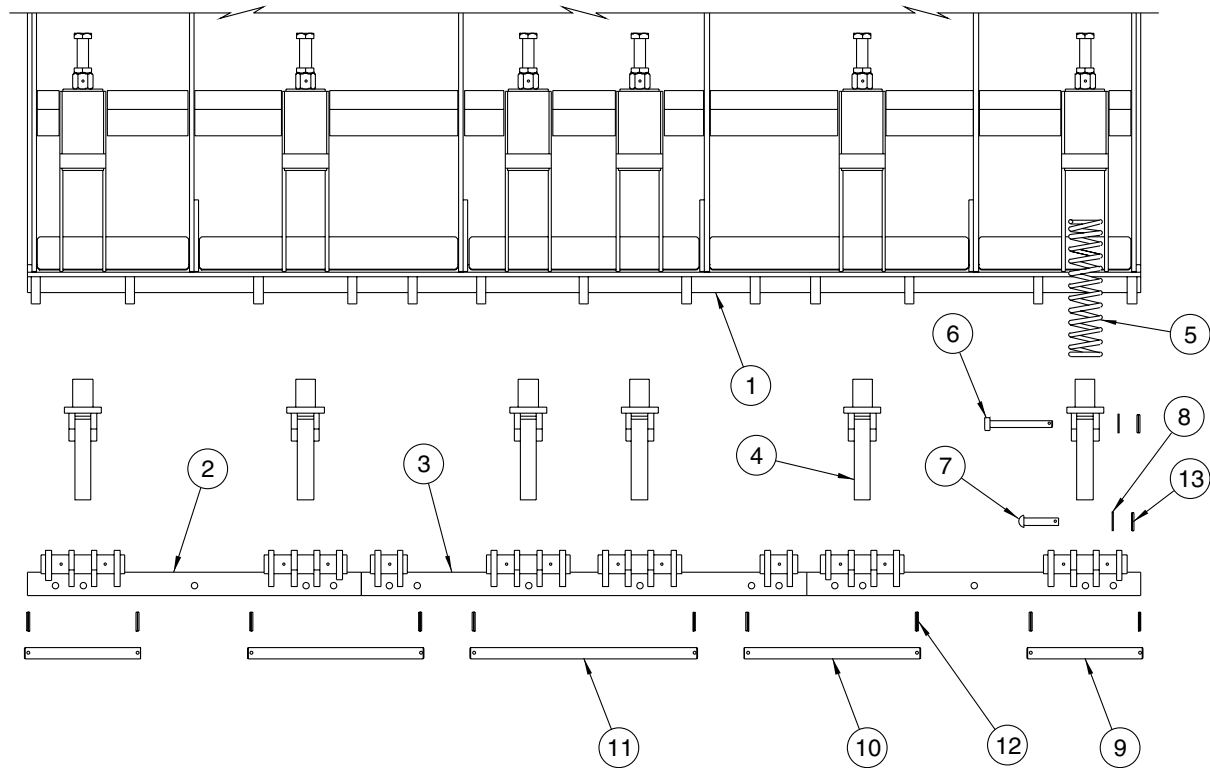
---

# **Reversible Compression Trip Edge**

---

## PLOW, COMPRESSION TRIP EDGE

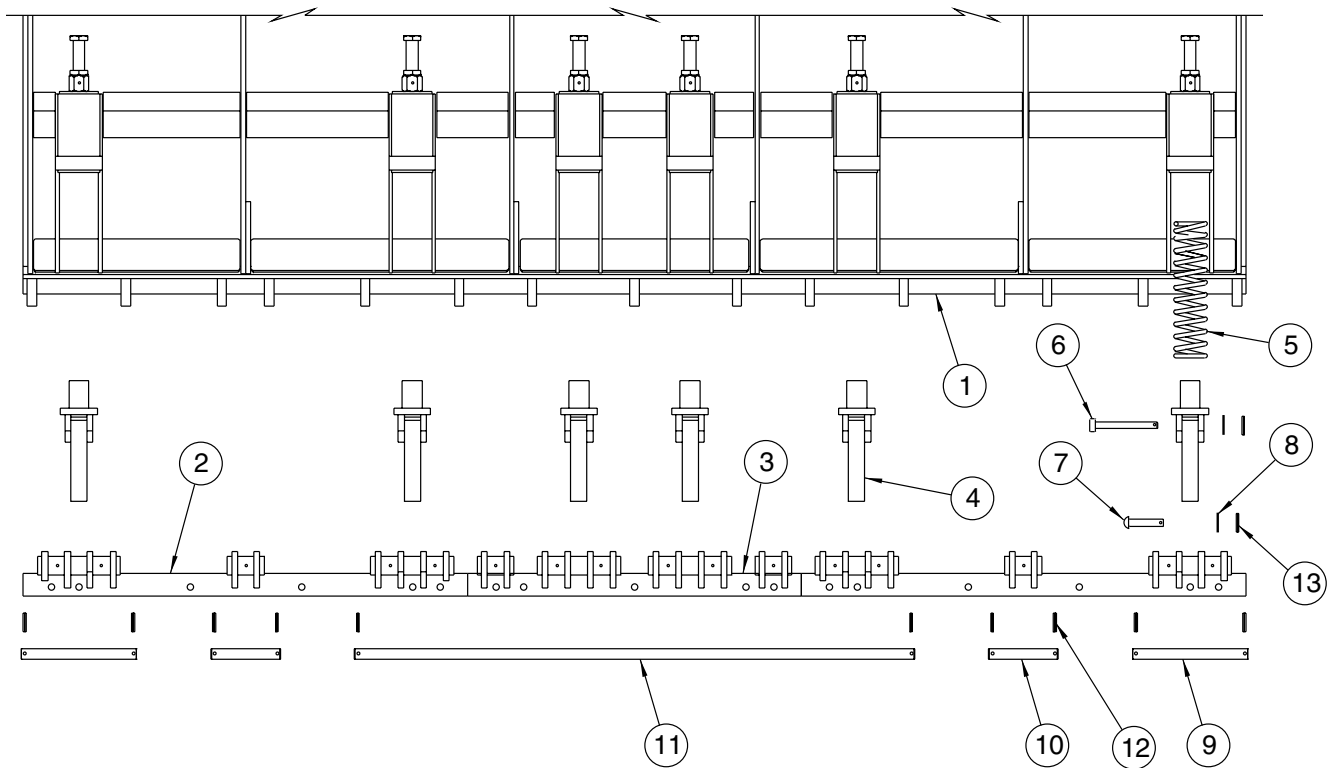
Item	Qty.	Part Number	Description
1	1	00045731	MOLDBOARD ASSEMBLY, PLOW, MP39R10-TE SEE PAGE 46
		00045734	MOLDBOARD ASSEMBLY, PLOW, MP39R10-ISTE SEE PAGE 46
		00045732	MOLDBOARD ASSEMBLY, PLOW, MP39R11-TE SEE PAGE 47
		00045735	MOLDBOARD ASSEMBLY, PLOW, MP39R11-ISTE SEE PAGE 47
		00045733	MOLDBOARD ASSEMBLY, PLOW, MP39R12-TE SEE PAGE 48
		00045736	MOLDBOARD ASSEMBLY, PLOW, MP39R12-ISTE SEE PAGE 48
		00045737	MOLDBOARD ASSEMBLY, PLOW, MP44R10-TE SEE PAGE 46
		00045740	MOLDBOARD ASSEMBLY, PLOW, MP44R10-ISTE SEE PAGE 46
		00045738	MOLDBOARD ASSEMBLY, PLOW, MP44R11-TE SEE PAGE 47
		00045741	MOLDBOARD ASSEMBLY, PLOW, MP44R11-ISTE SEE PAGE 47
		00045739	MOLDBOARD ASSEMBLY, PLOW, MP44R12-TE SEE PAGE 48
		00045742	MOLDBOARD ASSEMBLY, PLOW, MP44R12-ISTE SEE PAGE 48
		00045743	MOLDBOARD ASSEMBLY, PLOW, MP51R10-TE SEE PAGE 46
		00045746	MOLDBOARD ASSEMBLY, PLOW, MP51R10-ISTE SEE PAGE 46
		00045744	MOLDBOARD ASSEMBLY, PLOW, MP51R11-TE SEE PAGE 47
		00045747	MOLDBOARD ASSEMBLY, PLOW, MP51R11-ISTE SEE PAGE 47
00045745	MOLDBOARD ASSEMBLY, PLOW, MP51R12-TE SEE PAGE 48		
00045748	MOLDBOARD ASSEMBLY, PLOW, MP51R12-ISTE SEE PAGE 48		
2	1	00059105	CUTTING EDGE KIT, 10', CTE, .625 X 8, TPCSK SEE PAGE 49
		00059142	CUTTING EDGE KIT, 11', CTE, .625 X 8, TPCSK SEE PAGE 49
		00059112	CUTTING EDGE KIT, 12', CTE, .625 X 8, TPCSK SEE PAGE 49
3	1	00050466	STABILIZER ARM KIT, SUPPORT ARM, 34.50 SEE PAGE 54
4	1	00050926	REVERSING KIT, PLOW, 3X10 CYL SEE PAGE 51
5	1	00050454	PUSHFRAME KIT, RVS, TE, 10'-12' SEE PAGE 53
6	1	05050095	TAG, SERIAL NUMBER
7	1	00055962	DECAL KIT, PLOW SEE PAGE 76



### MOLDBOARD ASSEMBLY, COMPRESSION TRIP EDGE, 10'

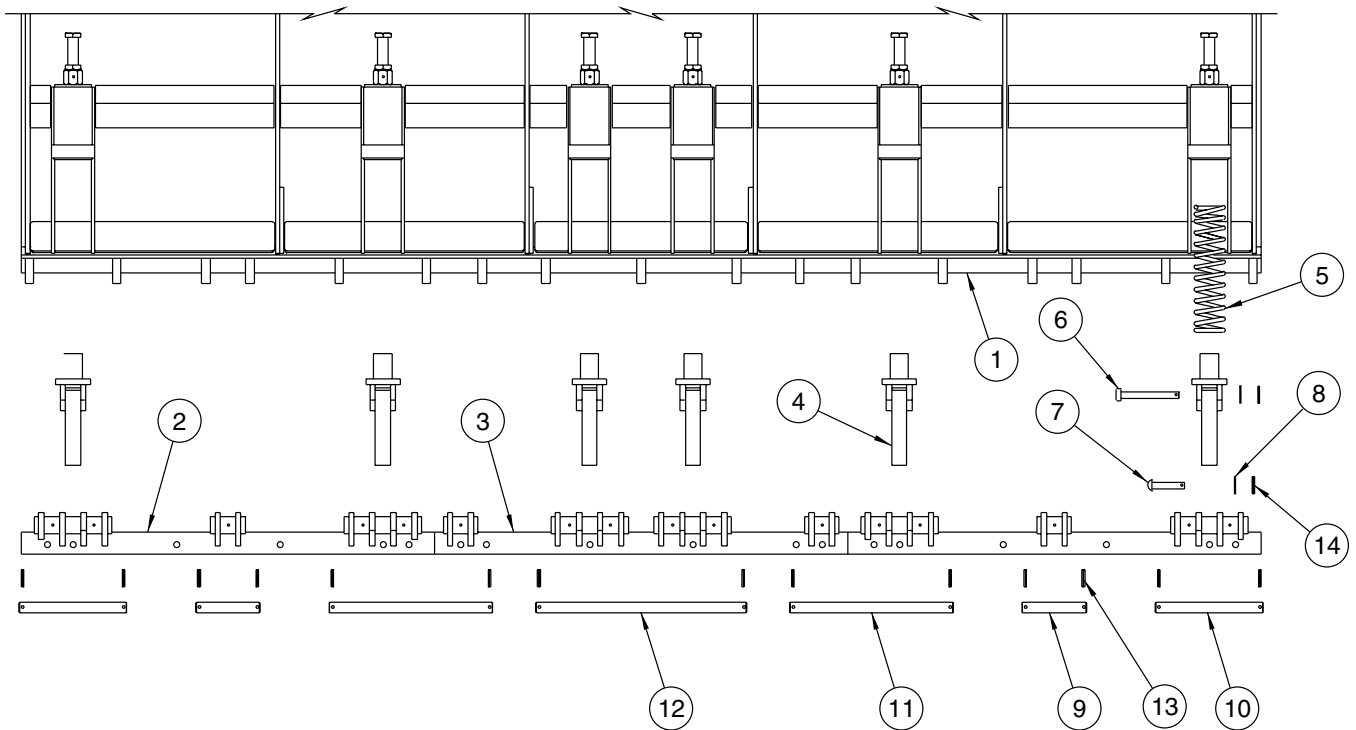
Item	Qty.	Part Number	Description
1	1	00036911 00036917 00036923  00036914 00036920 00036926	MOLDBOARD WELDMENT, MP39R10-TE MOLDBOARD WELDMENT, MP44R10-TE MOLDBOARD WELDMENT, MP51R10-TE  MOLDBOARD WELDMENT, MP39R10-ISTE MOLDBOARD WELDMENT, MP44R10-ISTE MOLDBOARD WELDMENT, MP51R10-ISTE
2	2	00094734	END SECTION, 3'
3	1	00094739	END SECTION, 4'
4	6	00094731	LEG ASSEMBLY
5	6	05035042	SPRING COMPRESSION
6	6	05022120	PIN, .75 X 6, BUTTON HEAD, ZINC
7	6	05022119	PIN, .75 X 3.375, BUTTON HEAD, ZINC
8	12	05021312	WASHER, .75, FLAT, ZINC
9	2	00010113	PIN, 1.188 DIA X 12.5, LONG
10	2	00010114	PIN, 1.188 DIA X 19 LONG
11	1	00010115	PIN, 1.188 DIA X 24.5, LONG
12	10	05022039	PIN, .3125 X 2, ROLL
13	12	05022026	PIN, .25 X 2, ROLL





### MOLDBOARD ASSEMBLY, COMPRESSION TRIP EDGE, 11'

Item	Qty.	Part Number	Description
1	1	00036912 00036918 00036924  00036915 00036921 00036927	MOLDBOARD WELDMENT, MP39R11-TE MOLDBOARD WELDMENT, MP44R11-TE MOLDBOARD WELDMENT, MP51R11-TE  MOLDBOARD WELDMENT, MP39R11-ISTE MOLDBOARD WELDMENT, MP44R11-ISTE MOLDBOARD WELDMENT, MP51R11-ISTE
2	2	00094743	END SECTION, 4'
3	1	00094742	END SECTION, 3'
4	6	00094731	LEG ASSEMBLY
5	6	05035042	SPRING COMPRESSION
6	6	05022120	PIN, .75 X 6, BUTTON HEAD, ZINC
7	6	05022119	PIN, .75 X 3.375, BUTTON HEAD, ZINC
8	12	05021312	WASHER, .75, FLAT, ZINC
9	2	00010113	PIN, 1.188 DIA X 12.5, LONG
10	2	00010114	PIN, 1.188 DIA X 19 LONG
11	1	00010115	PIN, 1.188 DIA X 24.5, LONG
12	10	05022039	PIN, .3125 X 2, ROLL
13	12	05022026	PIN, .25 X 2, ROLL



### MOLDBOARD ASSEMBLY, COMPRESSION TRIP EDGE, 12'

Item	Qty.	Part Number	Description
1	1	00036913 00036919 00036925  00036916 00036922 00036928	MOLDBOARD WELDMENT, MP39R12-TE MOLDBOARD WELDMENT, MP44R12-TE MOLDBOARD WELDMENT, MP51R12-TE  MOLDBOARD WELDMENT, MP39R12-ISTE MOLDBOARD WELDMENT, MP44R12-ISTE MOLDBOARD WELDMENT, MP51R12-ISTE
2	2	00094743	END SECTION, 4'
3	1	00094739	END SECTION, 4'
4	6	00094731	LEG ASSEMBLY
5	6	05035042	SPRING COMPRESSION
6	6	05022120	PIN, .75 X 6, BUTTON HEAD, ZINC
7	6	05022119	PIN, .75 X 3.375, BUTTON HEAD, ZINC
8	12	05021312	WASHER, .75, FLAT, ZINC
9	2	00010112	PIN, 1.188 DIA X 7.5 LONG
10	2	00010113	PIN, 1.188 DIA X 12.5, LONG
11	2	00010114	PIN, 1.188 DIA X 19 LONG
12	1	00010115	PIN, 1.188 DIA X 24.5, LONG
13	14	05022039	PIN, .3125 X 2, ROLL
14	12	05022026	PIN, .25 X 2, ROLL

**00059105 CUTTING EDGE, COMPRESSION TRIP EDGE, 10'**

Item	Qty.	Part Number	Description
1	2	05031069	CUTTING EDGE, .625 X 8 X 3', TPCS
2	1	05031070	CUTTING EDGE, .625 X 8 X 4', TPCS
3	16	05014553	BOLT, .625-11 X 3, G8, DOME HEAD PLAIN
4	16	05021383	WASHER, .625, LOCK, HEAVY, ZINC
5	16	05020270	NUT, .625-11, G8, HEX, ZINC

**00059142 CUTTING EDGE, COMPRESSION TRIP EDGE, 11'**

Item	Qty.	Part Number	Description
1	2	05031069	CUTTING EDGE, .625 X 8 X 3', TPCS
2	1	05031070	CUTTING EDGE, .625 X 8 X 4', TPCS
3	17	05014553	BOLT, .625-11 X 3, G8, DOMEHEAD PLAIN
4	17	05021383	WASHER, .625, LOCK, HEAVY, ZINC
5	17	05020270	NUT, .625, G8, HEX, ZINC

**00059112 CUTTING EDGE, COMPRESSION TRIP EDGE, 12'**

Item	Qty.	Part Number	Description
1	3	05031069	CUTTING EDGE, .625 X 8 X 3', TPCS
2	18	05014553	BOLT, .625-11 X 3, G8, DOMEHEAD PLAIN
3	18	05021383	WASHER, .625, LOCK, HEAVY, ZINC
4	18	05020270	NUT, .625, G8, HEX, ZINC

**00055905 J-STYLE TORSION TRIP EDGE, RUBBER W/ COVER BLADE 10'**

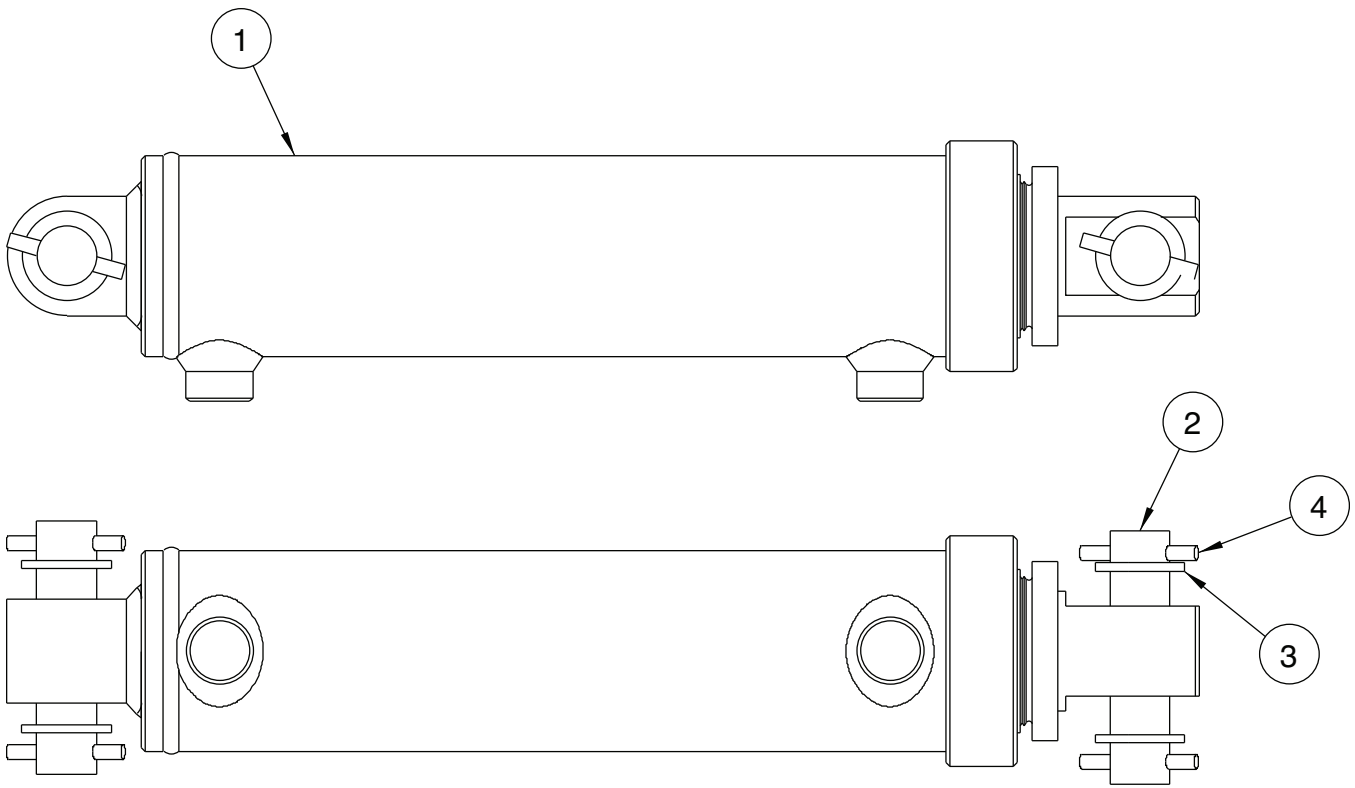
Item	Qty.	Part Number	Description
1	1	05021022	CUTTING EDGE, 10', 1.5 X 10, RUBBER
2	1	05031030	CUTTING EDGE, 10', .5 X 6, TPCS
3	12	05014560	BOLT, .625-11 X 5, G8, DOME HEAD PLAIN
4	12	05021383	WASHER, .625, LOCK, HEAVY, ZINC
5	12	05020270	NUT, .625-11, G8, HEX, ZINC

**00055926 J-STYLE TORSION TRIP EDGE, RUBBER W/ COVER BLADE 11'**

Item	Qty.	Part Number	Description
1	1	05021023	CUTTING EDGE, 11', 1.5 X 10, RUBBER
2	1	05031031	CUTTING EDGE, 11', .5 X 6, TPCS
3	13	05014560	BOLT, .625-11 X 5, G8, DOME HEAD PLAIN
4	13	05021383	WASHER, .625, LOCK, HEAVY, ZINC
5	13	05020270	NUT, .625-11, G8, HEX, ZINC

**00055927 J-STYLE TORSION TRIP EDGE, RUBBER W/ COVER BLADE 12'**

Item	Qty.	Part Number	Description
1	1	05031024	CUTTING EDGE, 12', 1.5 X 10, RUBBER
2	1	05031032	CUTTING EDGE, 12', .5 X 6, TPCS
3	14	05014560	BOLT, .625-11 X 5, G8, DOME HEAD PLAIN
4	14	05021383	WASHER, .625, LOCK, HEAVY, ZINC
5	14	05020270	NUT, .625-11, G8, HEX, ZINC

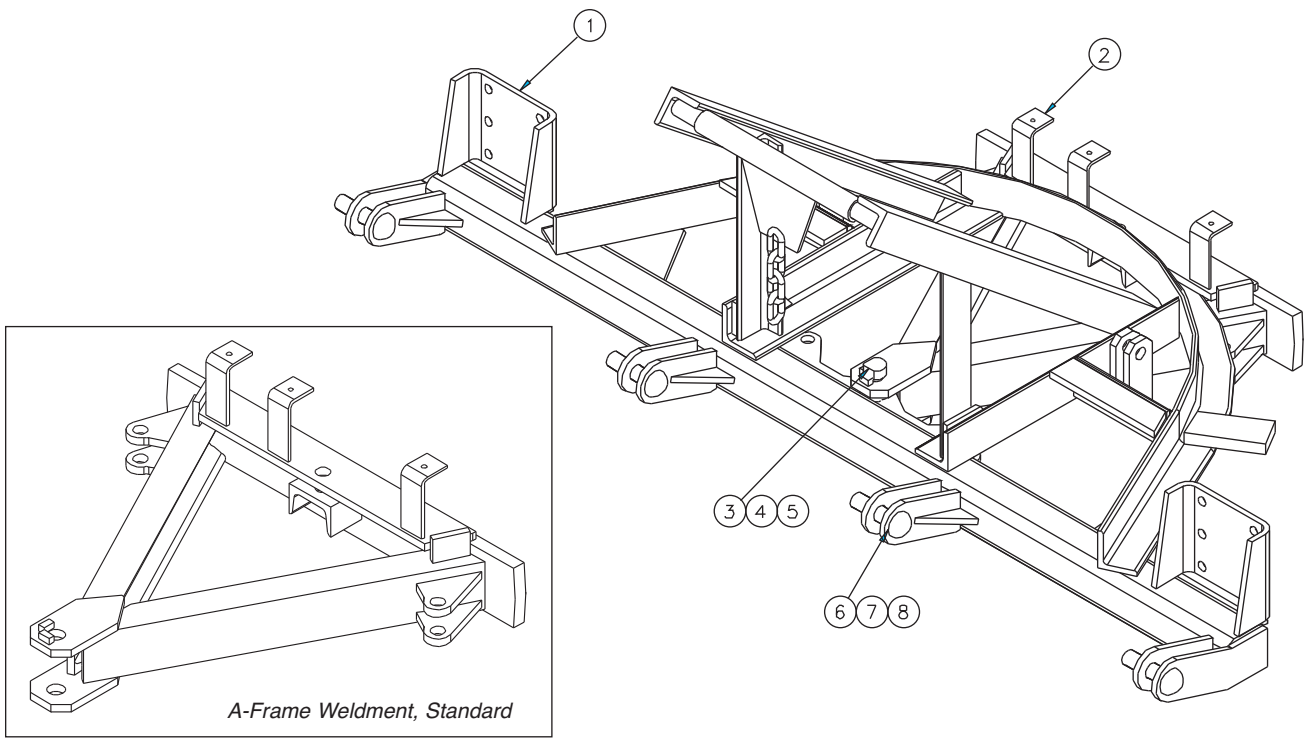


**00050926 REVERSING KIT, 3X10 CYLINDER**

Item	Qty.	Part Number	Description
1	2	05000000	CYLINDER, 3X10, DA <i>See Page 73</i>
2	4	05022040	PIN, 1 X 4.25, NO HEAD
3	8	05021202	BUSHING, 1.5 X 1 X 10GA, ZINC
4	8	05022026	PIN, .25" X 2", ROLL, ZINC
5	1	05043067	CUSHION BLOCK ASSEMBLY, W/ HOSE
6	1	05037080	HOSE ASSEMBLY, PLOW, W/ R608
7	3	00055000	CLIP, HOSE HOLD DOWN
8	3	05010620	BOLT, .3125-18 X 1.5, G8, HHCS, ZINC
9	3	05020909	NUT, .3125-18, GC, TOP LOCK, C&W
10	6	05050608	CABLE TIE

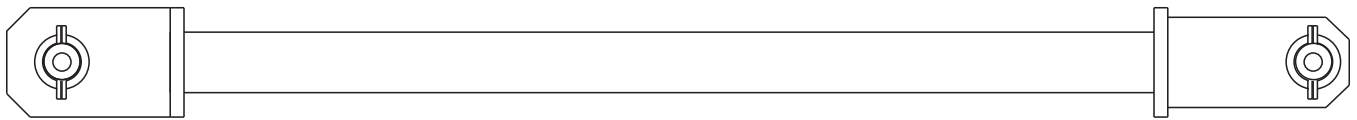
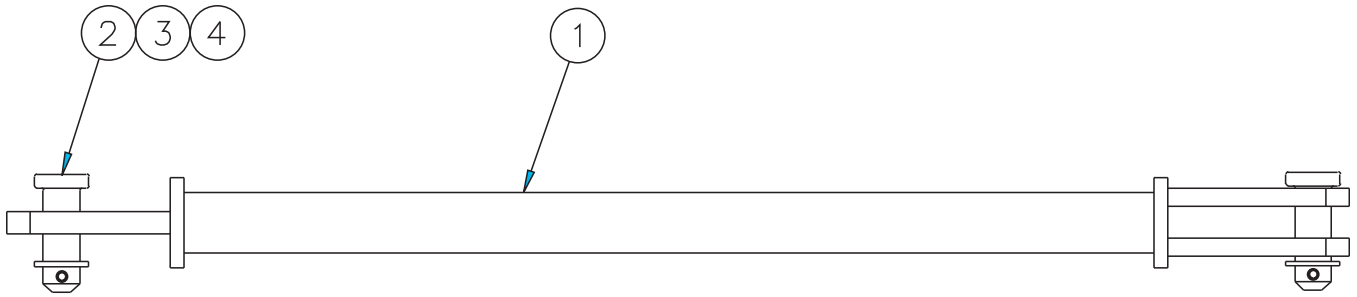
### 00050953 REVERSING KIT, 4X10 CYLINDER

Item	Qty.	Part Number	Description
1	2	05002640	CYLINDER, 4X10, DA <i>See Page 74</i>
2	4	05022040	PIN, 1 X 4.25, NO HEAD
3	8	05021202	BUSHING, 1.5 X 1 X 10GA, ZINC
4	8	05022026	PIN, .25" X 2", ROLL, ZINC
5	1	05043067	CUSHION BLOCK ASSEMBLY, W/ HOSE
6	1	05037080	HOSE ASSEMBLY, PLOW, W/ R608
7	3	00055000	CLIP, HOSE HOLD DOWN
8	3	05010620	BOLT, .3125-18 X 1.5, G8, HHCS, ZINC
9	3	05020909	NUT, .3125-18, GC, TOP LOCK, C&W
10	6	05050608	CABLE TIE



**00050454 PUSHFRAME KIT, REVERSING**

Item	Qty.	Part Number	Description
1	1	00038007	PUSHFRAME WELDMENT, REVERSING
2	1	00027881	A-FRAME WELDMENT, STD, 1.25, PIVOT, 1X5
3	1	05022047	PIN, 1.25 X 3.25, FLAT, HD
4	1	05022044	PIN, .625 X 3, ROLL
5	1	05021316	WASHER, 1.25, FLAT, ZINC
6	4	05022067	PIN, 1.25 X 4.5, FLAT, HD
7	4	05022039	PIN, .3125 X 2, ROLL
8	4	05021191	BUSHING, 1.25, MACHINE, ZINC



**00050466 STABILIZER ARM KIT, COMPRESSION TRIP EDGE  
AND TORSION TRIP EDGE**

Item	Qty.	Part Number	Description
1	2	00094829	SUPPORT ARM WELDMENT
2	4	05022051	PIN, 1 X 3.25, FLAT, HD
3	4	05022026	PIN, .25 X 2, ROLL, ZINC
4	4	05021202	BUSHING, 1 10GA, MACHINE

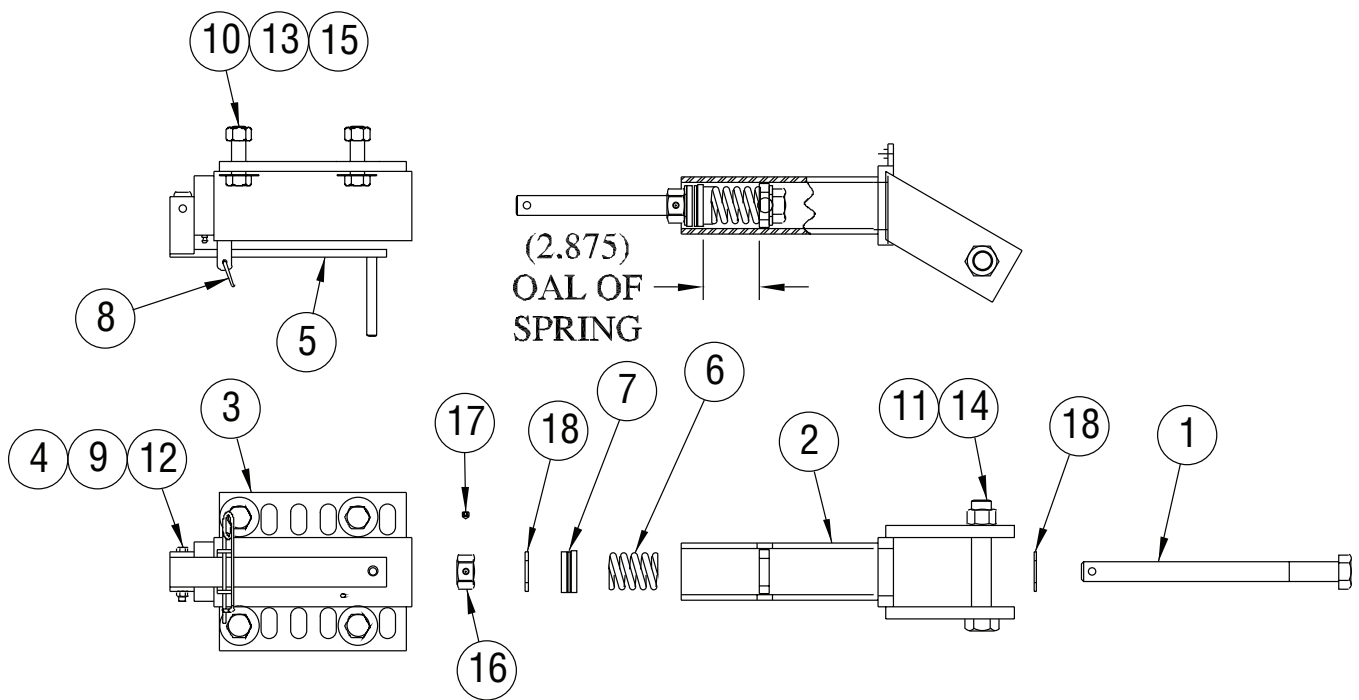




---

# Plow Options

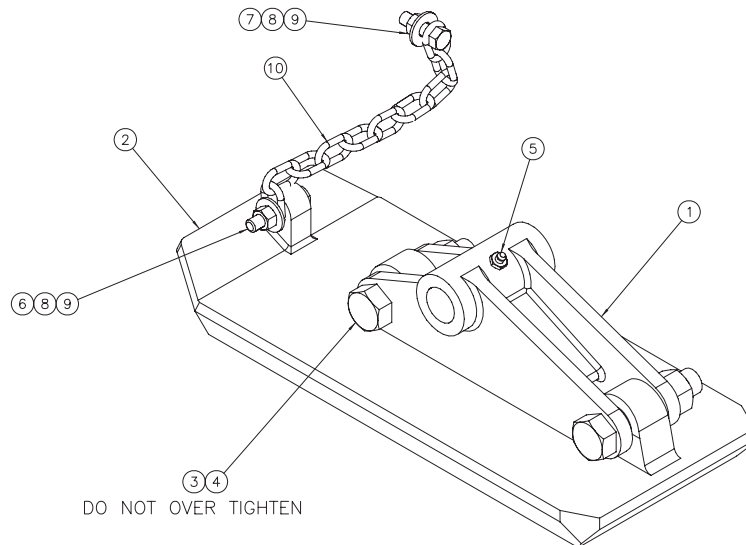
---



### 00051200 JACK ASSEMBLY, SCREW, ROUND

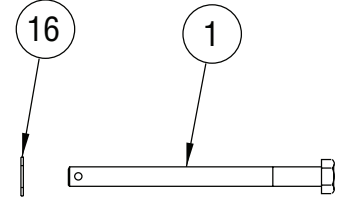
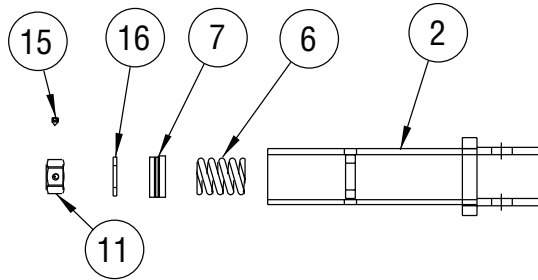
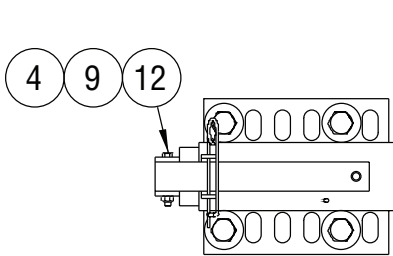
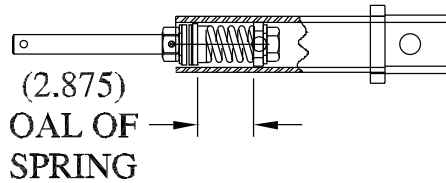
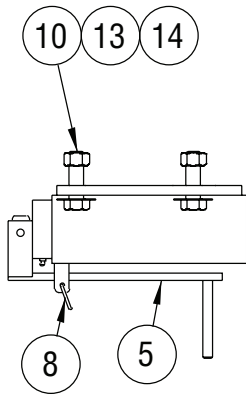
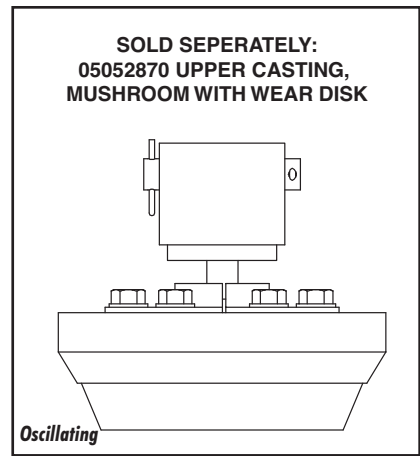
Item	Qty.	Part Number	Description
1	1	00051204	ADJUSTMENT SCREW
2	1	00051202	INNER TUBE WELDMENT
3	1	00051201	OUTER TUBE WELDMENT
4	1	00010000	NUT, ADJUSTMENT SCREW
5	1	00051203	ADJUSTMENT HANDLE WELDMENT
6	1	05035000	SPRING, COMPRESSION
7	1	05030000	BEARING THRUST
8	1	05022074	PIN, SAFETY, .120 DIA X 4.375 LG
9	1	05010624	BOLT, .3125-18 X 2.5, G8, HHCS, ZINC
10	4	05010766	BOLT, .75-10 X 2.5, G8, HHCS, ZINC
11	1	05010822	BOLT, 1-8 X 6, G8, HHCS, ZINC
12	1	05020909	NUT, .3125 -18, GC, TOP LOCK, C&W
13	4	05020849	NUT, .75-10, GC, TOP LOCK, C&W
14	2	05020834	NUT, 1-8, GC, TOP LOCK, C&W
15	8	05021063	WASHER, .75, STRUCTURAL, FLAT, ZINC
16	2	00098355 05050005 00011653	SKID SHOE ASSEMBLY, CAST, 2 PIECE SHOE, SKID, CARBIDE, 1X6 CASTER WHEEL
17	2	05050288	GREASE ZERK, .25-28 STRAIGHT

**Items 1-15 are included in the Jack Assembly, Plow, Skid 8 Caster this can be ordered as an assembly by using the part number 00051200.**



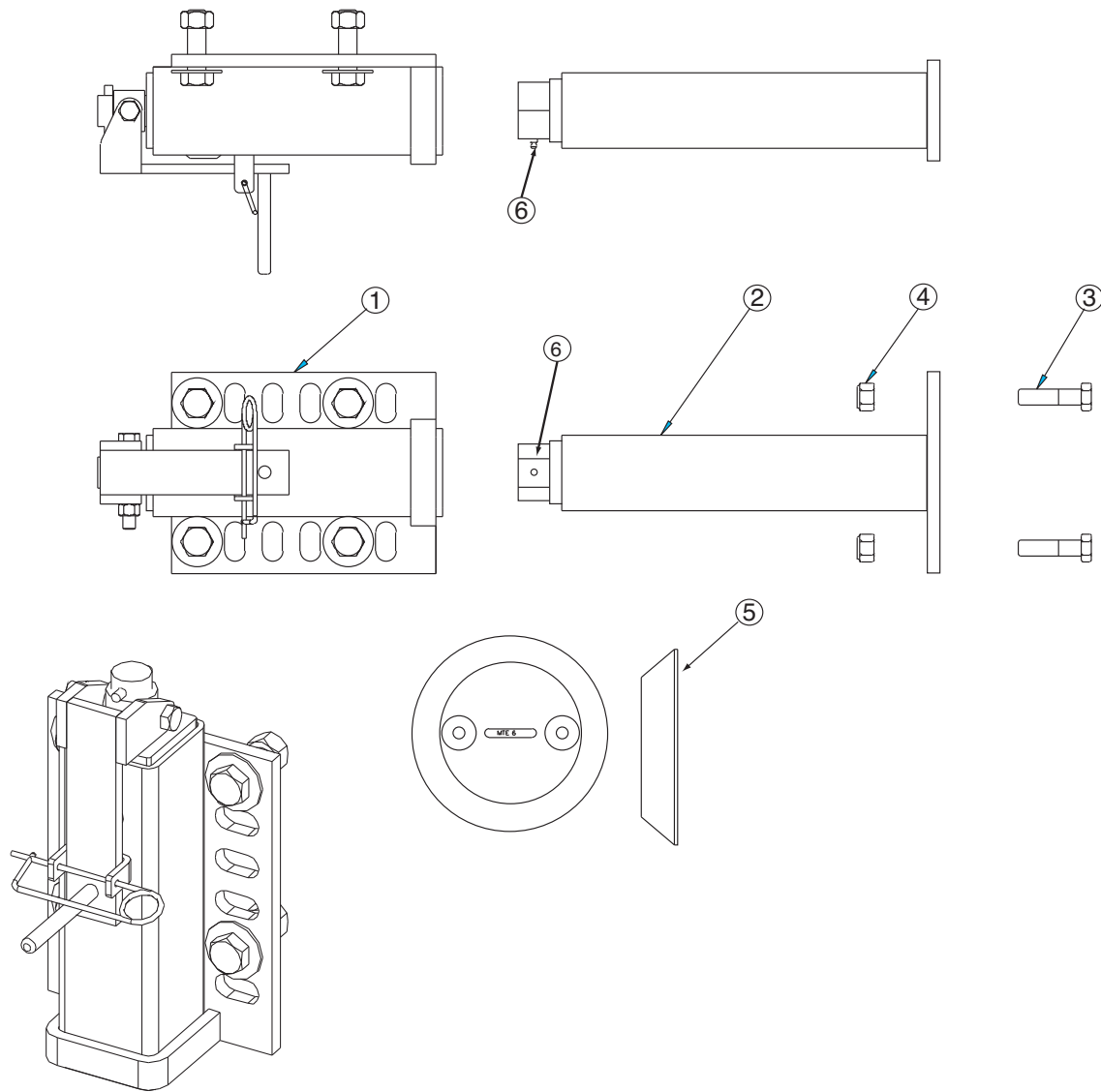
### 00098355 SKID SHOE ASSEMBLY, CAST, 2 PIECE

Item	Qty.	Part Number	Description
1	1	00098356	BRACKET MOUNTING, SKID SHOE
2	1	00098357	SKID SHOE
3	2	05010770	BOLT, .75-10, G8, HHCS, ZINC
4	2	05020849	NUT, .75-10, CG, TOP LOCK,C&W
5	1	05050003	GREASE FITTING, .125 NPT
6	1	05010646	BOLT, .375-16 X 1.75, G8, HHCS, ZINC
7	1	05010644	BOLT, .375-16 X 1.25, G8, HHCS, ZINC
8	2	05021307	WASHER, .375, FLAT, ZINC
9	2	05020898	NUT, .375-16, GC, TOP LOCK,C&W
10	1	00053319	CHAIN PRF COIL, .188 X 10 LINKS



### 00054906 JACK ASSEMBLY, PLOW, SCREW ROUND

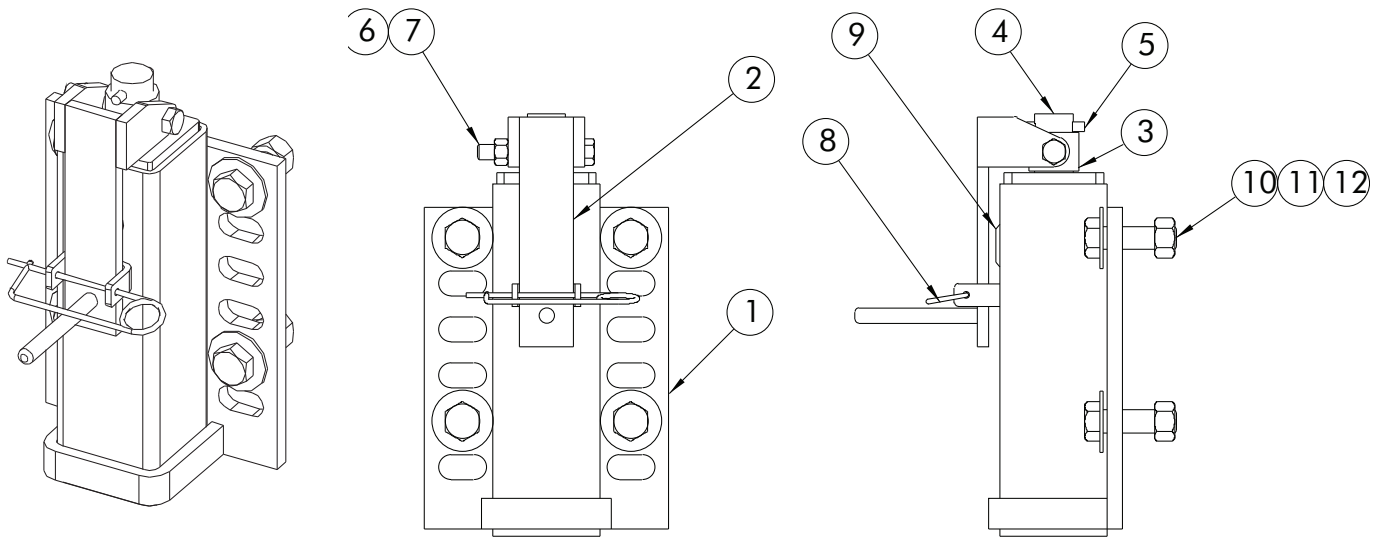
Item	Qty.	Part Number	Description
1	1	00051204	ADJUSTMENT SCREW
2	1	00099360	JACK WELDMENT, INNER TUBE, ROUND
3	1	00051201	OUTER TUBE WELDMENT
4	1	00010000	NUT, ADJUSTMENT SCREW
5	1	00051203	HANDLE WELDMENT
6	1	05035000	SPRING, COMPRESSION, 2.13 OD
7	1	05030000	BEARING THRUST, 1" ID
8	1	05022074	PIN SAFETY, .120 DIA X 4.375 LONG
9	1	05010624	BOLT, .3125-18 X 2.5, G8, HHCS, ZINC
10	4	05010766	BOLT, .75-10 X 2.5, G8, HHCS, ZINC
11	1	00121661	NUT, RETAINER, ADJ SCREW, PLOW JACK SUSPENSION
12	1	05020909	NUT, .313-18, GC, TOP LOCK, C&W
13	4	05020849	NUT, .750-10, GC, TOP LOCK, C&W
14	8	05021063	WASHER, .750, FLAT, STRUCTURAL, ZINC
15	1	05017137	SCREW, .313-18 X .375, SSS, CP, ZINC
16	2	05021020	WASHER, 1.0 FLAT, MIL-CARB, SAE, ZINC



## MUSHROOM SHOES

Item	Qty.	Part Number	Description
1	1	00041967	JACK ASSEMBLY, OUTER TUBE, SQUARE 1A 00051025 ACME NUT JACK ADJUSTMENT
2	1	00051036	ASSEMBLY, INNER TUBE
3	2	05010741	BOLT, .625-11 X 2.5, G8, ZINC
4	2	05020837	NUT, .625-11, GC, TOP LOCK, C&W
5	2	05051009 05050120	SHOE, MUSHROOM, TAPERED, 11.5 X 8 SHOE, MUSHROOM, 10.25, CARBIDE
6	1	05050288	GREASE ZERK, .25-28, STRAIGHT

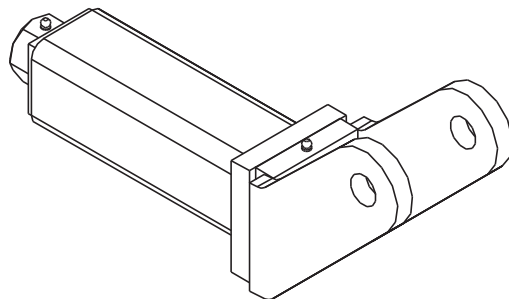
**Items 1-4 are included in the Jack Assembly, Mushroom Shoe Jack and can be ordered using the part number 00051035.**

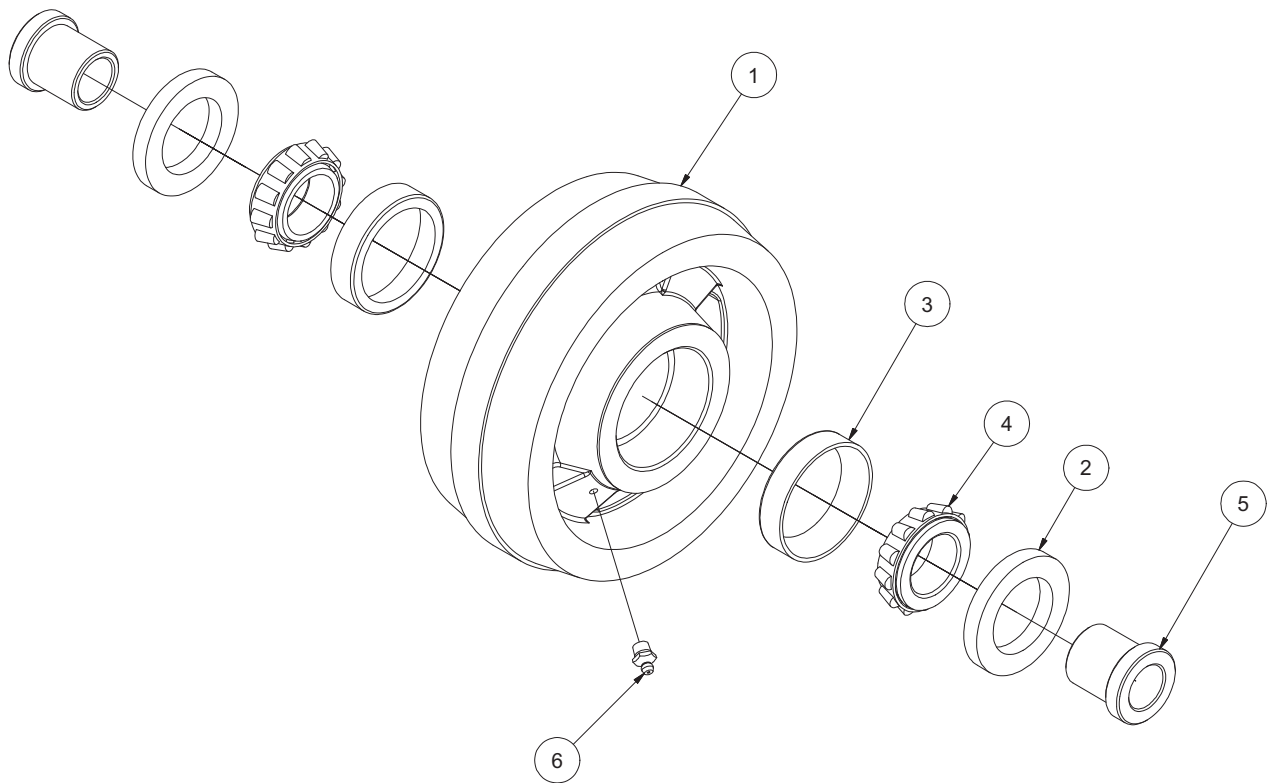


**00041967 JACK ASSEMBLY, OUTER TUBE, SQUARE TUBE STYLE**

Item	Qty.	Part Number	Description
1	1	00051027	ASSEMBLY, OUTER TUBE
2	1	00051020	ASSEMBLY, HANDLE CRANK
3	1	00051022	PIPE, COLLAR CRANK
4	1	00051021	ASSEMBLY, ROD, ACME THREADED, CRANK
5	1	05022039	PIN, ROLL, .3125 X 2
6	1	05010699	BOLT, .5-13 X 3.5, G8, HHCS, ZINC
7	1	05020847	NUT, .5-13, GC, TOP LOCK, C&W
8	1	05022074	PIN SAFETY, .120 DIA X 4.375 LG
9	1	05050023	CAP GREASE, PLASTIC, 1.3125 DIA
10	4	05010766	BOLT, .75-10 X 2.5, G8, HHCS, ZINC
11	8	05021063	WASHER, .75, FLAT, STRUCTURAL ZINC
12	4	05020849	NUT, .75-10, GC, TOP LOCK, C&W

**00058146 INNER TUBE WELDMENT, CASTER/SKID  
OLD STYLE SQUARE**



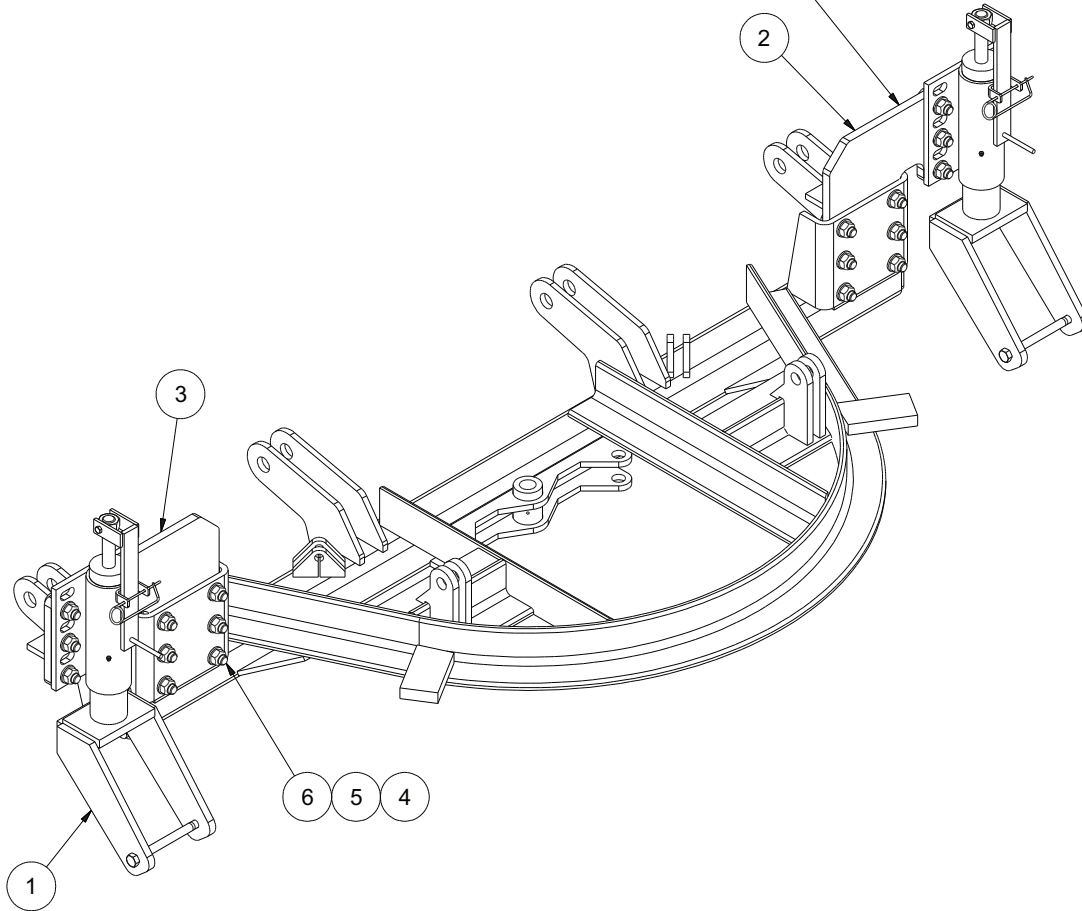


### 00011653 CASTER WHEEL PARTS LIST

Item	Qty.	Part Number	Description
1	1	05051398	WHEEL ASSEMBLY, 3X8, CASTER W/ RACE
2	2	05053363	SEAL, BEARING, HARWAL, MBR70
3	2	05030015	RACE, KOYO FOR 14137A
4	2	05030014	BEARING, TAPERED INNER RACE
5	2	05051326	BUSHING FOR 3X8 CASTER
6	1	05050003	GREASE ZERK

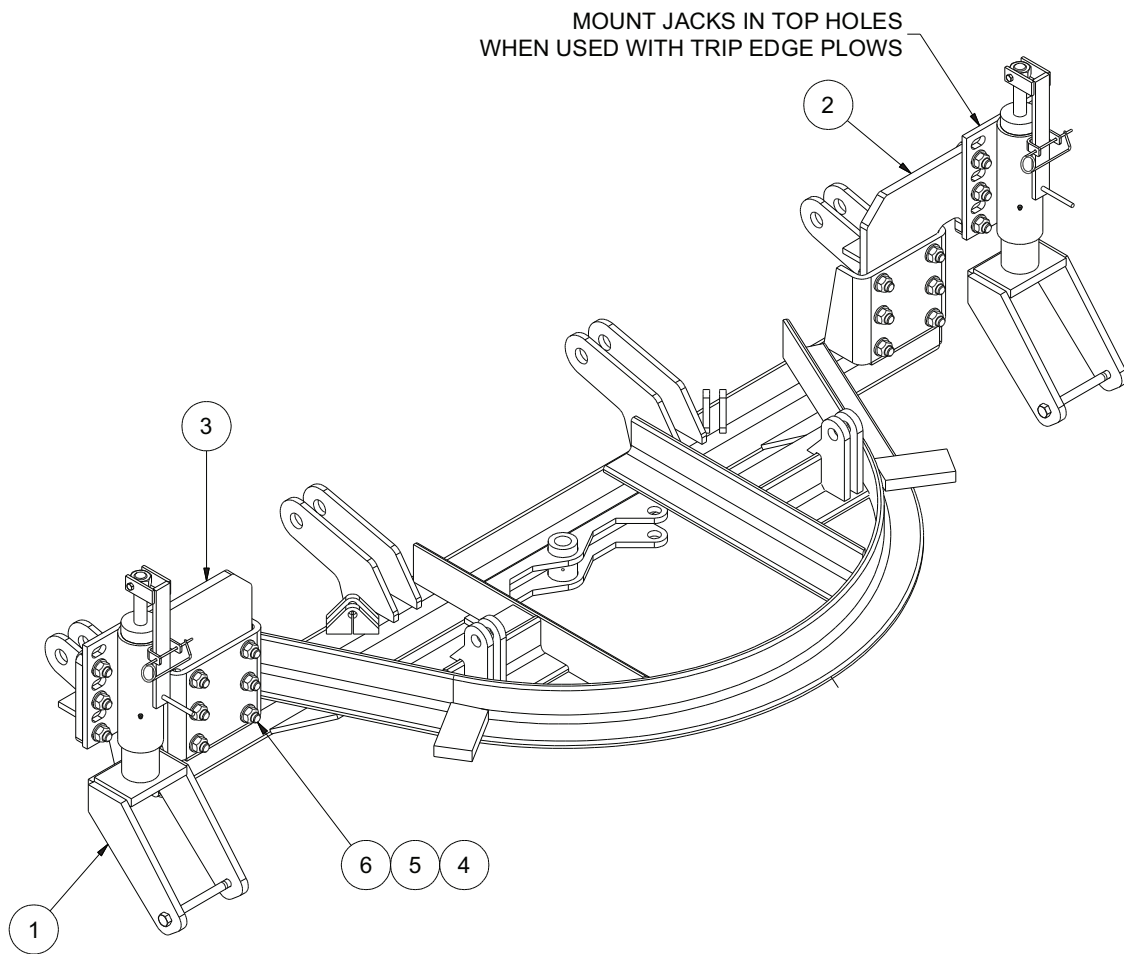


MOUNT JACKS IN TOP HOLES  
WHEN USED WITH TRIP EDGE PLOWS



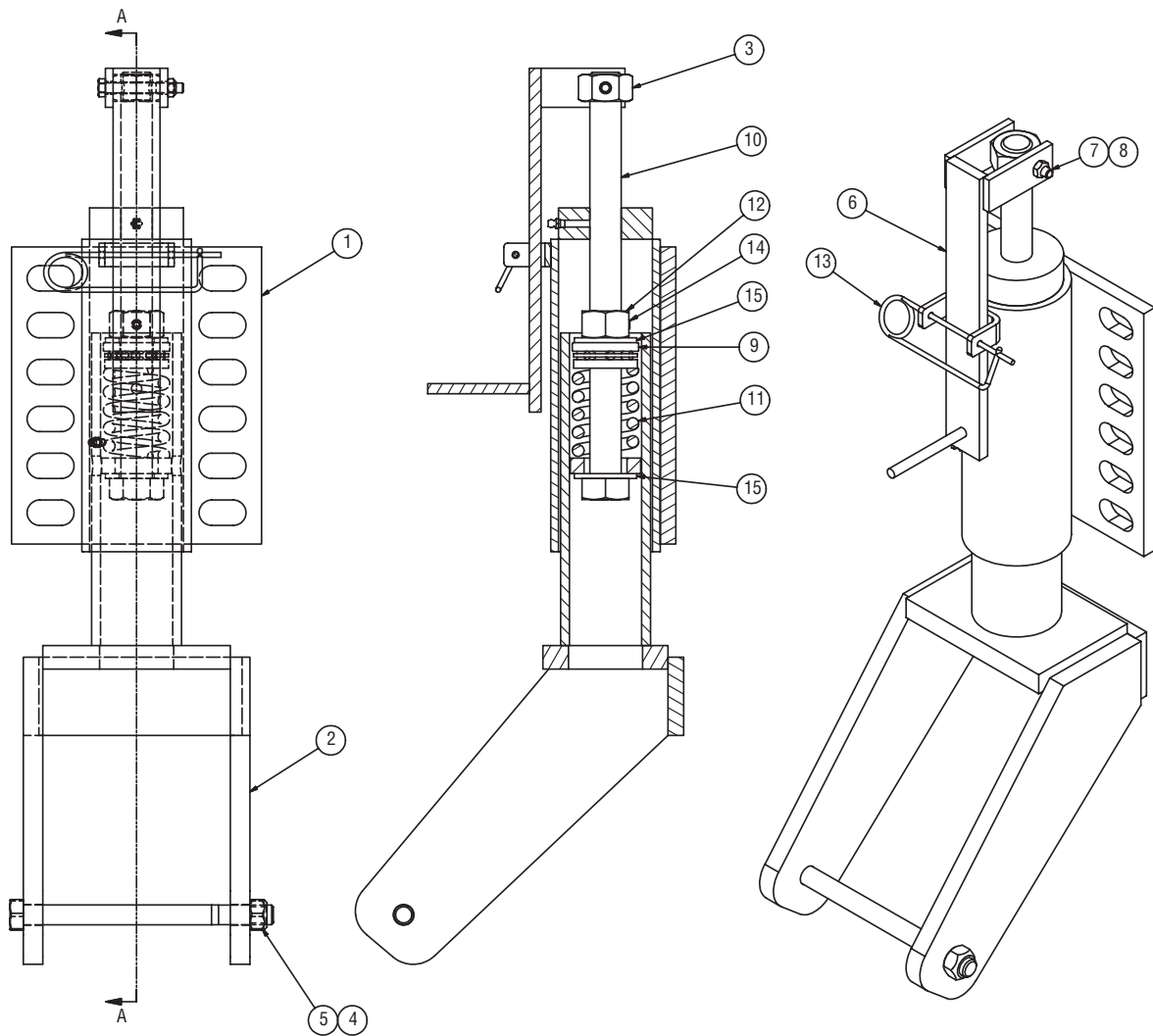
**00106638 JACK KIT, PLOW, PNEU TIRE, 16.0 FOAM FILLED, ROUND SCREW STYLE**

Item	Qty.	Part Number	Description
1	2	00106639	JACK ASSEMBLY, PLOW, SCREW ROUND
2	1	00106280	EXTENSION WELDMENT, MOUNT, RH
3	1	00106281	EXTENSION WELDMENT, MOUNT, LH
4	48	05021063	WASHER, .750 STRUCTURAL, FLAT, ZINC
5	24	05020849	NUT, .750-10, GC, TOP LOCK, C&W
6	24	05010766	BOLT, .750-10 X 2.5, G8, HHCS, ZINC
7	2	05051084	WHEEL ASSEMBLY, PNEU, FOAM FILLED



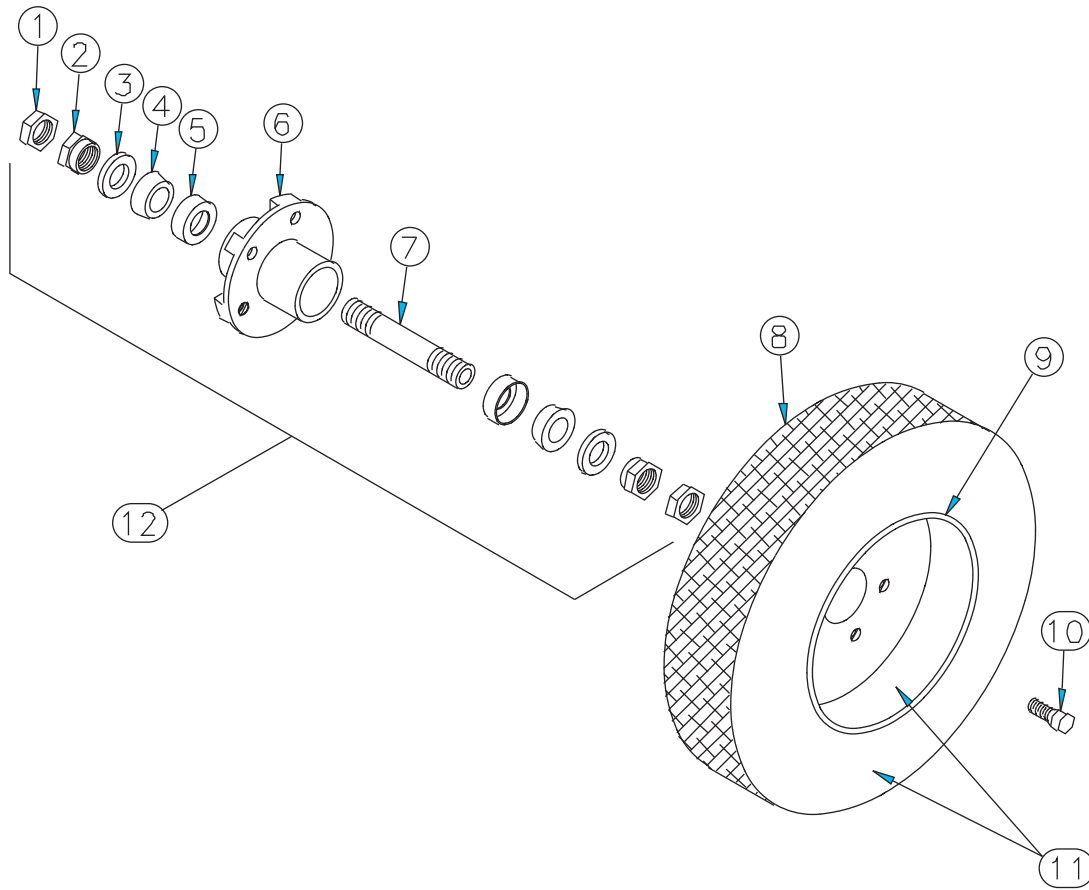
### 00106637 JACK KIT, PLOW, PNEU TIRE, 16.0 ROUND SCREW STYLE

Item	Qty.	Part Number	Description
1	2	00106639	JACK ASSEMBLY, PLOW, SCREW ROUND
2	1	00106280	EXTENSION WELDMENT, MOUNT, RH
3	1	00106281	EXTENSION WELDMENT, MOUNT, LH
4	48	05021063	WASHER, .750 STRUCTURAL, FLAT, ZINC
5	24	05020849	NUT, .750-10, GC, TOP LOCK, C&W
6	24	05010766	BOLT, .750-10 X 2.5, G8, HHCS, ZINC
7	2	00011654	WHEEL ASSEMBLY, PNEU <span style="float: right;"><i>See Page 66</i></span>



### 00106639 JACK ASSEMBLY, PLOW, SCREW, ROUND PNEUMATIC WHEEL

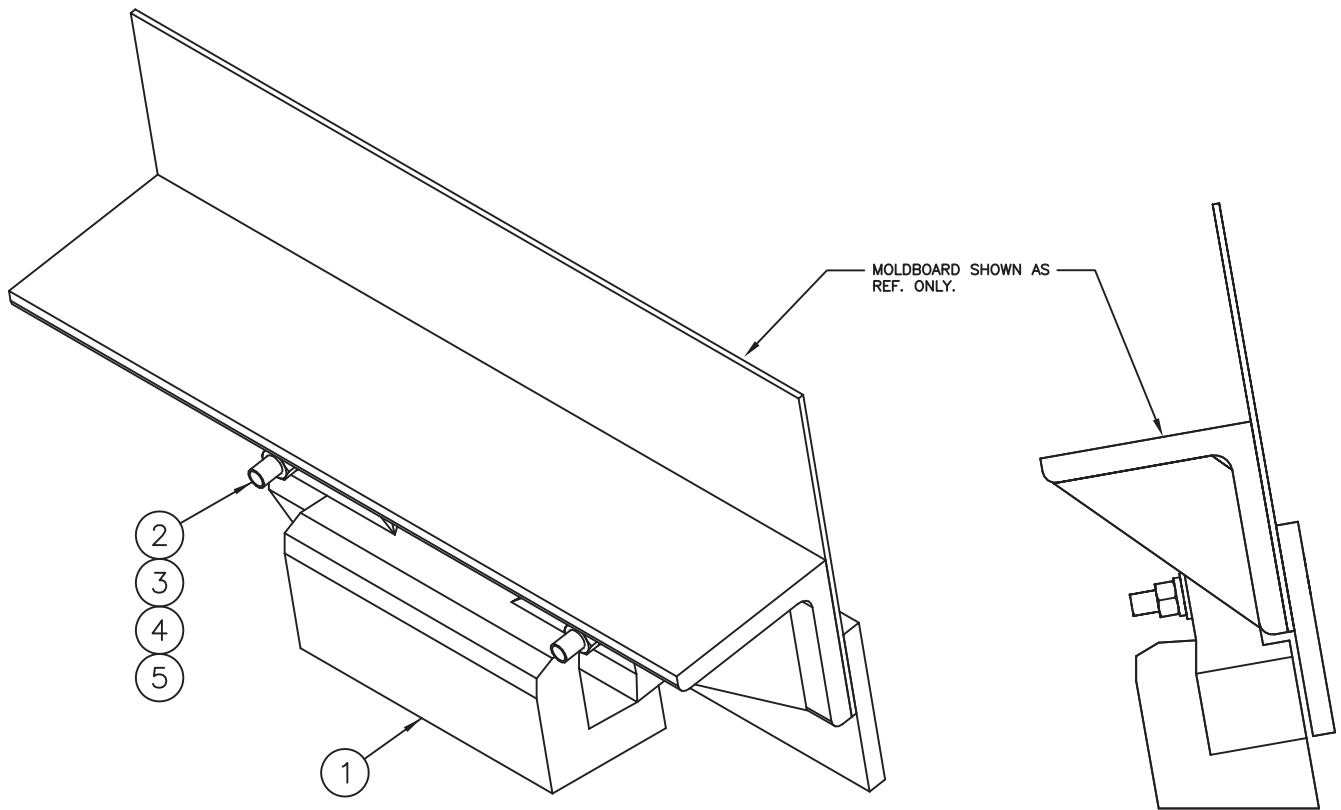
Item	Qty.	Part Number	Description
1	1	00051201	JACK WELDMENT, PLOW, OUTER ROUND
2	1	00106640	YOKE WELDMENT, JACK PLOW
3	1	00010000	NUT, ADJUSTMENT, JACK PLOW
4	1	05010755	BOLT, .625-11 X 8, G8, HHCS, ZINC
5	1	05020837	NUT, .625-11, GC, TOP LOCK, C&W
6	1	00051203	HANDLE WELDMENT, ADJ, PLOW JACK
7	1	05010624	BOLT, .313-18 X 2.5, G8, HHCS, ZINC
8	1	05020909	NUT, .313-18, GC, TOP LOCK, C&W
9	1	05030000	BEARING, THRUST, 1" ID
10	1	00051204	ADJUSTMENT SCREW
11	1	05035000	SPRING, COMPRESSION, 2.13" OD, 2.875" OAL
12	2	05020125	NUT, 1-8, G2, JAM, ZINC
13	1	05022074	PIN, .120 X 4.375, SAFETY



### 00011654 WHEEL ASSEMBLY, PNEUMATIC

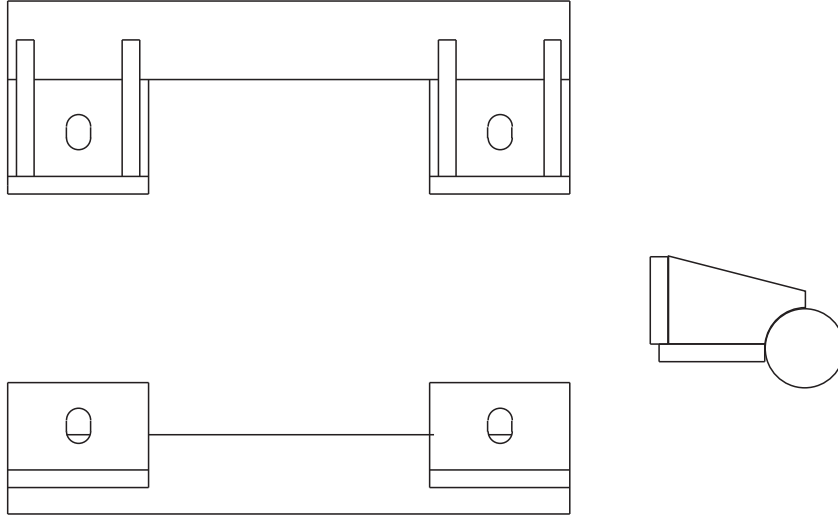
Item	Qty.	Part Number	Description
1	2	---	JAM NUT, 1-14
2	2	---	NUT 1-14
3	2	05051176	SEAL WHEEL
4	2	05030013	BEARING
5	2	05030017	CUP
6	1	00082814	HUB
7	1	05051439	SPINDLE
8	1	05051204	TIRE
9	1	05050539	RIM
10	5	05016985	BOLT
11	1	05051084	FOAM FILLED TIRE AND RIM
12	1	05051083	PNEUMATIC WHEEL HUB ASSEMBLY

***\*Items 1 & 2 are sold with Item 7.***



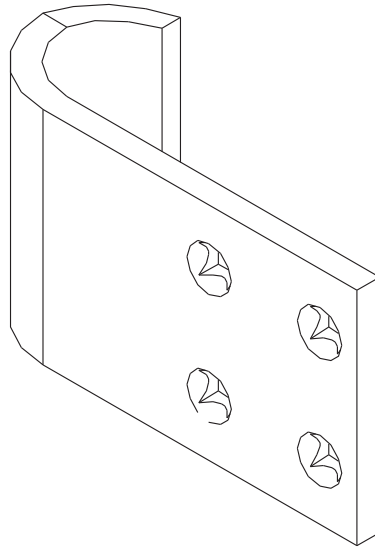
**00061797 SHOE KIT, SKID, MOLDBOARD**

Item	Qty.	Part Number	Description
1	2	05050221 05050220 05051036 05051037	SHOE MOLDBOARD, CAST, 8", 10° SHOE MOLDBOARD, CAST, 5" & 6", 10° SHOE MOLDBOARD, CASTING, 5", 30° SHOE MOLDBOARD, CASTING, 8", 35°
2	4	05014560	BOLT, .625-11 X 5, G8, DOME HEAD, PLAIN
3	4	05021383	WASHER, .625, LOCK, HEAVY, ZINC
4	4	05020270	NUT, .625-11, G8, HEX, ZINC



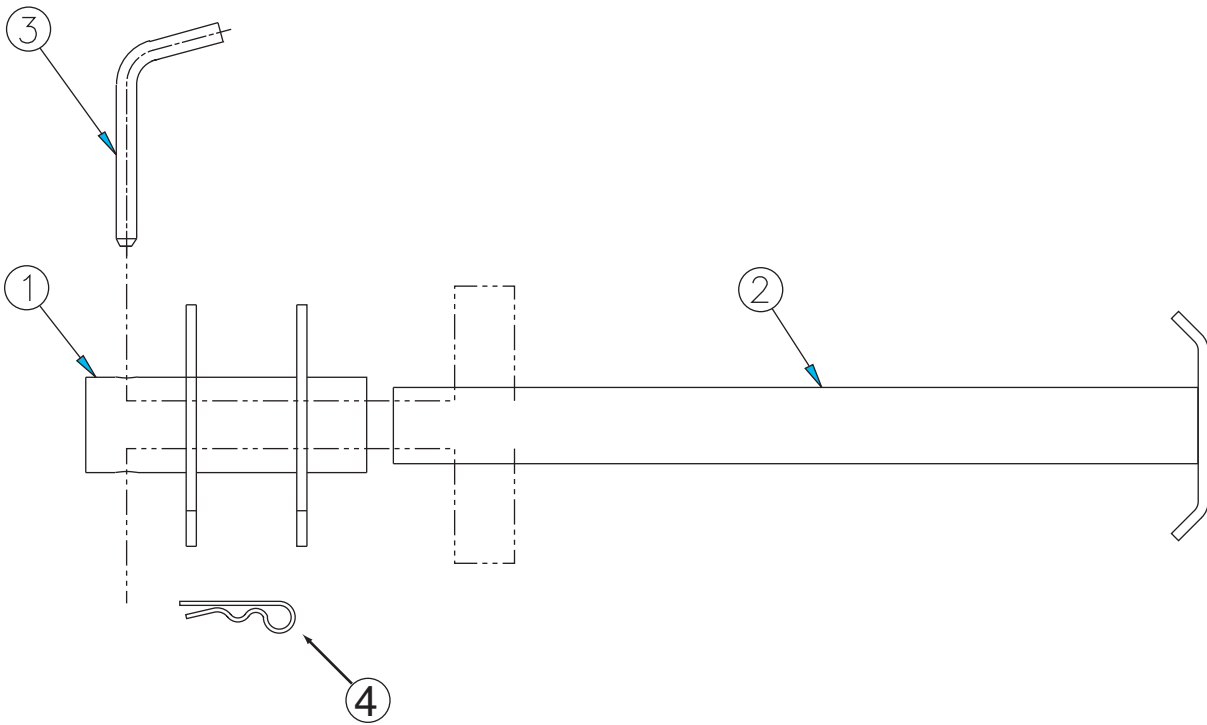
**00059115 SHOE KIT, SKID, PLOW, MOLDBOARD**

Item	Qty.	Part Number	Description
1	2	00010271	SHOE ASSEMBLY, MOLDBOARD
2	4	05014553	BOLT, .625-11 X 3, G8, DOMEHEAD PLAIN
3	4	05010739	BOLT, .625-11 X 2, G8, HHCS, ZINC
4	8	05021383	WASHER, .625, LOCK, HEAVY, ZINC
5	8	05020270	NUT, .625-11, G8, HEX, ZINC



### **CURB GUARD KIT, WRAP AROUND**

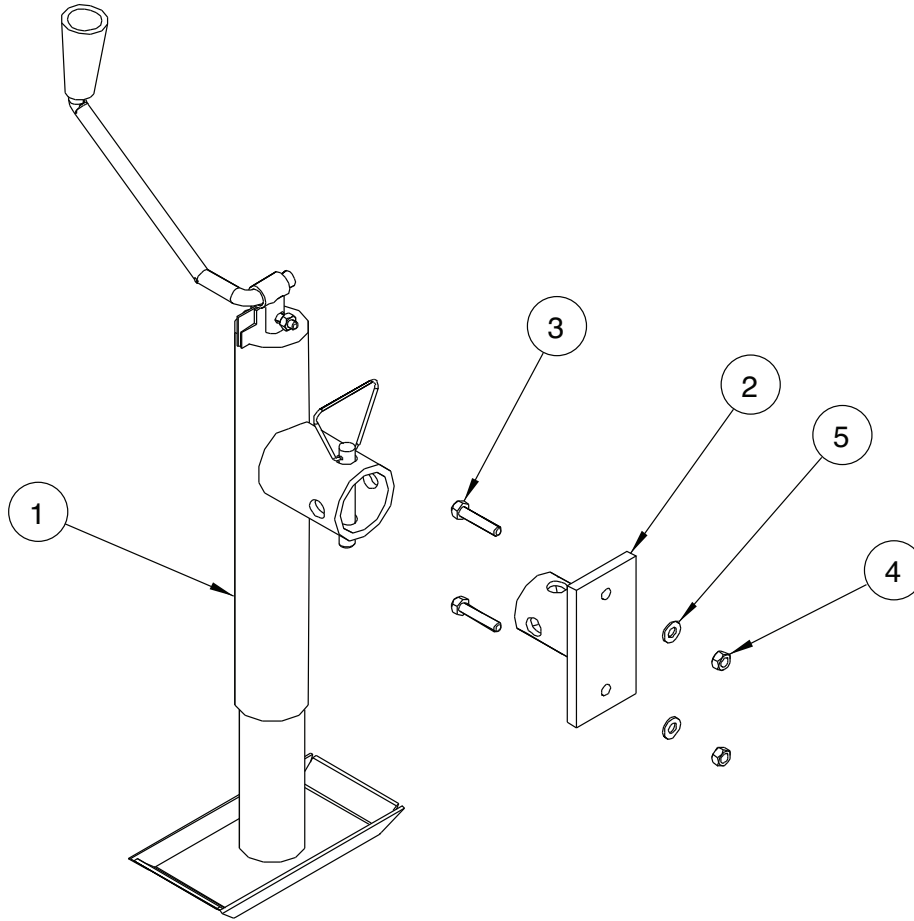
<b>Item</b>	<b>Qty.</b>	<b>Part Number</b>	<b>Description</b>
1	1	05050000	CURB GUARD, .625 X 6
2	2	05014555	BOLT, .625-11 X 3.5, G8, DOME HEAD, PLAIN



**00010264 JACK KIT, PARKING JACK, A-FRAME PARKING JACK**

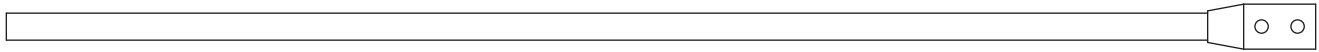
Item	Qty.	Part Number	Description
1	1	00010265	TUBE JACK WELDMENT, OUTER PARKING
2	1	00010267	INNER TUBE ASSEMBLY
3	1	05022136	PIN, .5 X 4.5, 4" GRIP BENT, ZINC
4	1	05022035	PIN, #11, HAIR, ZINC





**00061212 JACK KIT, PARKING, TOP WIND, TUBE MOUNT, REMOVABLE**

Item	Qty.	Part Number	Description
1	1	05050227	JACK ASSEMBLY, TOP WIND, TUBE MOUNT
2	2	00084491	MOUNT WELDMENT, JACK TOP WIND
3	4	05010645	BOLT, .375-16, GC, TOP LOCK, C&W
4	4	05020898	NUT, .375-16, GC, TOP LOCK, C&W
5	4	05021307	WASHER, .375, FLAT, ZINC



### MARKERS

Item	Qty.	Part Number	Description
1	2	05051432	MARKERS, 36" FLUORESCENT ORANGE FLEXIBLE MARKERS
2	1	05051181	MARKER CABLE, 42" L, STRAIGHT, YELLOW W/ RED DAY GLO TIP

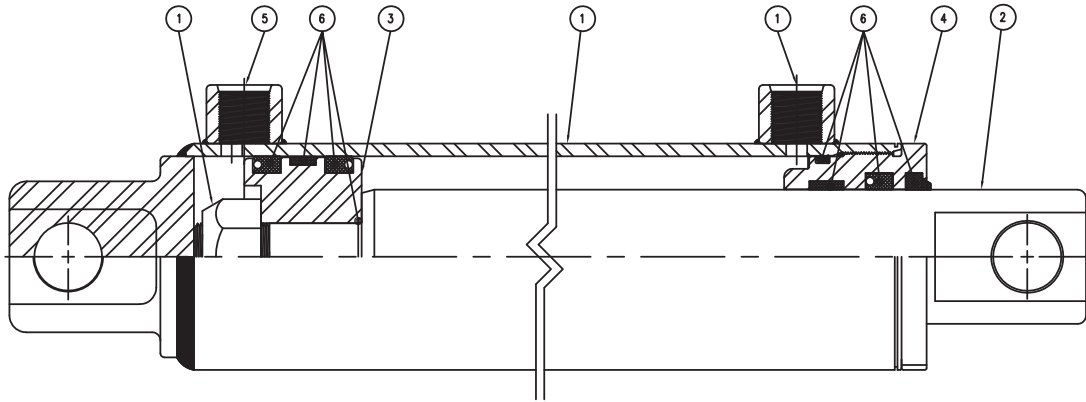
### DEFLECTOR KIT, RUBBER

Item	Qty.	Part Number	Description
1	1	05050352 05051423 05051424	BELTING, RUBBER SNOW, 10' BELTING, RUBBER SNOW, 11' BELTING, RUBBER, SNOW, 12'
2	2	00143916 00143918	STRIP BACKING, RSD, 35.875, END (USED ON 10') STRIP BACKING, RSD, 47.875, END (USED ON 11' & 12')
3	1	00143917 00143915	STRIP BACKING, RSD, 47.875, CENTER (USED ON 10' & 12') STRIP BACKING, RSD, 35.875, END (USED ON 11')
4	17 FOR 10FT 19 FOR 11 & 12'	05010620	BOLT, .3125-18 X 1.5, G8, HHCS, ZINC
5	17 FOR 10FT 19 FOR 11 & 12'	05020606	NUT, .3125-18, G2, SPINLOCK, ZINC

# 05000000 CYLINDER, 3 X 10, DA, REVERSE, NITRATED ROD, POLY PAK

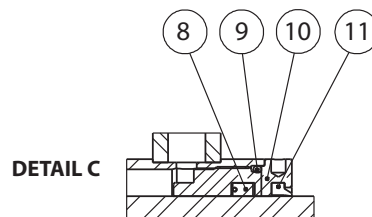
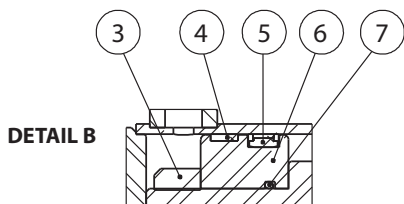
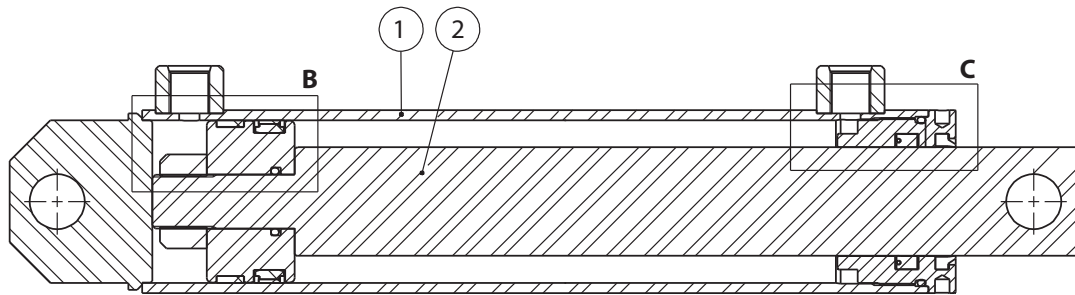
## DIREKT FORCE

ITEM	QTY	PART #	DESCRIPTION
1	1	---	BODY SUB ASSY
2	1	05003252	ROD
3	1	05003253	PISTON
4	1	05003254	GLAND
5	1	---	HARDWARE KIT
6	1	05003269	SEAL KIT



## BEST METAL

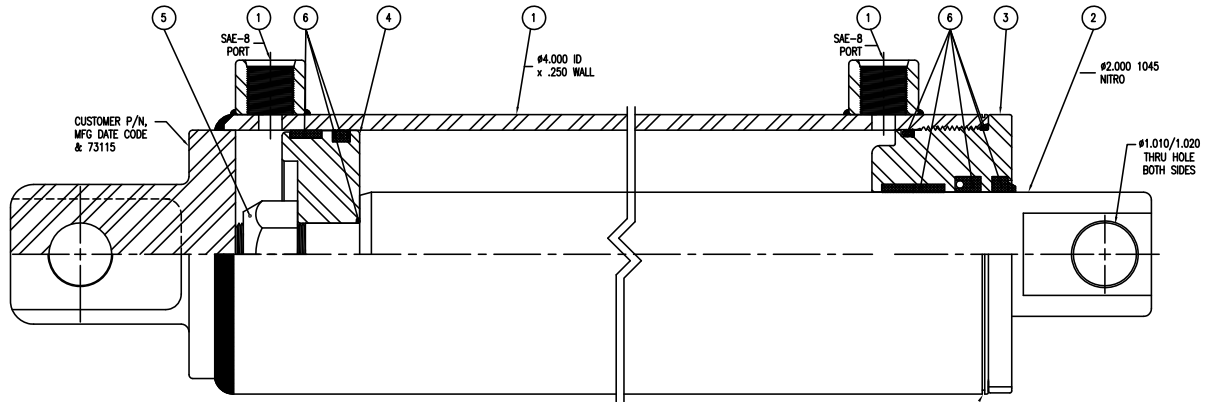
ITEM	QTY	PART #	DESCRIPTION
1	1	N/A	JACKET ASSEMBLY
2	1	N/A	ROD, EXTERNAL
3	1	N/A	LOCK NUT
4	1	*	WEAR RING
5	1	*	DYNAMIC SEAL
6	1	*	PISTON
7	1	*	O-RING
8	1	*	POLY PAK
9	1	*	O-RING
10	1	05003339	GLAND NUT
11	1	05002527	ROD WIPER
		05000013	SEAL KIT (Includes all parts marked with an *)



## 05002640 CYLINDER, 4 X 2 X 10 STROKE DA

**DIREKT FORCE**

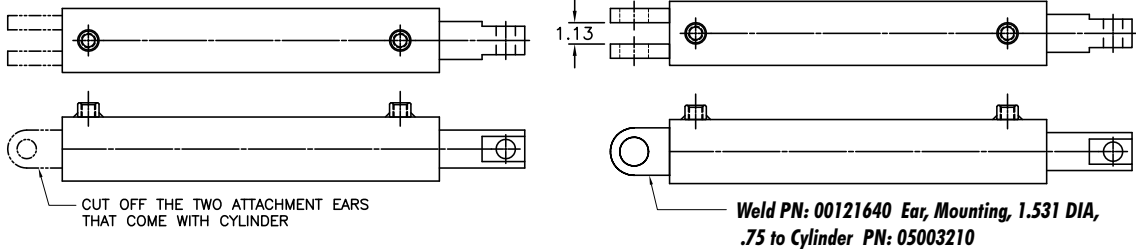
PART #	DESCRIPTION
---	BODY SUB-ASSEMBLY
---	ROD
---	GLAND
05003366	PISTON
05003240	HARDWARE KIT
05003265	SEAL KIT



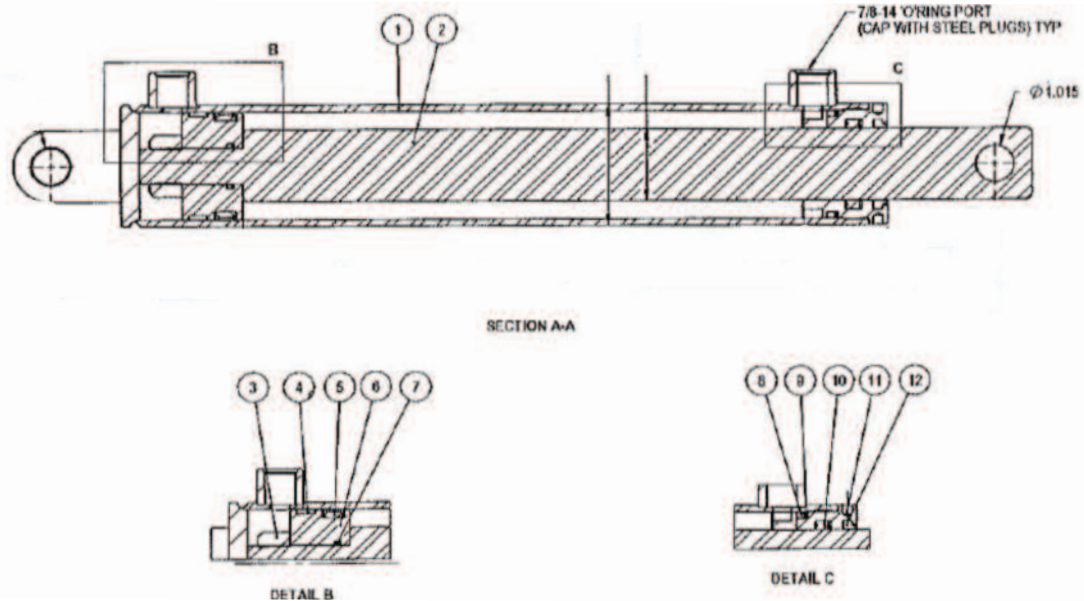
## 00121641 CYLINDER, 3x15, DA, for UPA Full

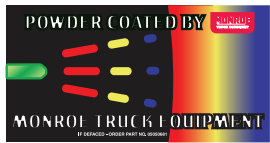
STFP #1

STEP #2



BEST METAL	ITEM	QTY	PART #	DESCRIPTION
	1	1	N/A	JACKET ASSEMBLY
	2	1	N/A	ROD ASSEMBLY
	3	1	N/A	TOP LOCK NUT
	4	1	*	WEAR RING
	5	1	*	DYNAMIC SEAL, CAPPED T-SEAL
	6	1	05003356	PISTON, WEAR RING, CAPPED T-SEAL
	7	1	*	STATIC SEAL, O-RING
	8	1	*	STATIC SEAL, O-RING
	9	1	*	STATIC SEAL, BACKUP RING
	10	1	*	DYNAMIC SEAL, POLYPAK
	11	1	05003355	GLAND NUT
	12	1	*	ROD WIPER
			05003225	SEAL KIT (Includes all parts marked with an *)





**WARNING**

Possible serious injury and equipment damage from loosening of equipment fasteners. Fasteners on snow and ice removal equipment may loosen due to vibration and repetitive movements. Retighten all equipment mounting fasteners after the first 8 hours of use, then check tightness weekly after that. Use a torque wrench when specific torque values are given in the installation manual. If fasteners need to be replaced, be certain to use the correct size, grade and type to prevent failure.

0505268

**WARNING**

Springs under tension! If spring releases while performing maintenance, serious injury or death could result. Use caution when working in area.

IF DEFACED - ORDER PART NO. 05052547



**MONROE**  
SNOW & ICE CONTROL

**QUALITY CHECK**

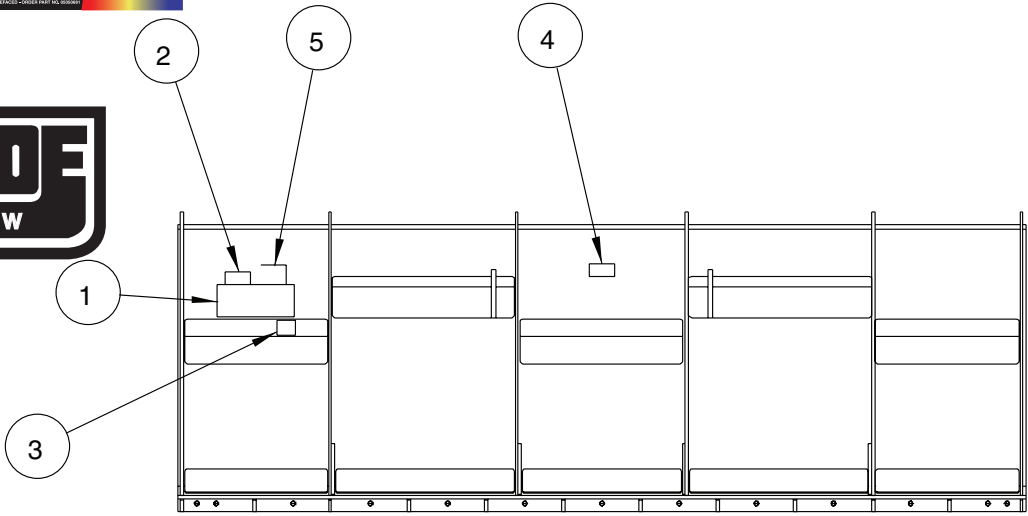
Inspected by: \_\_\_\_\_

\_\_\_\_\_

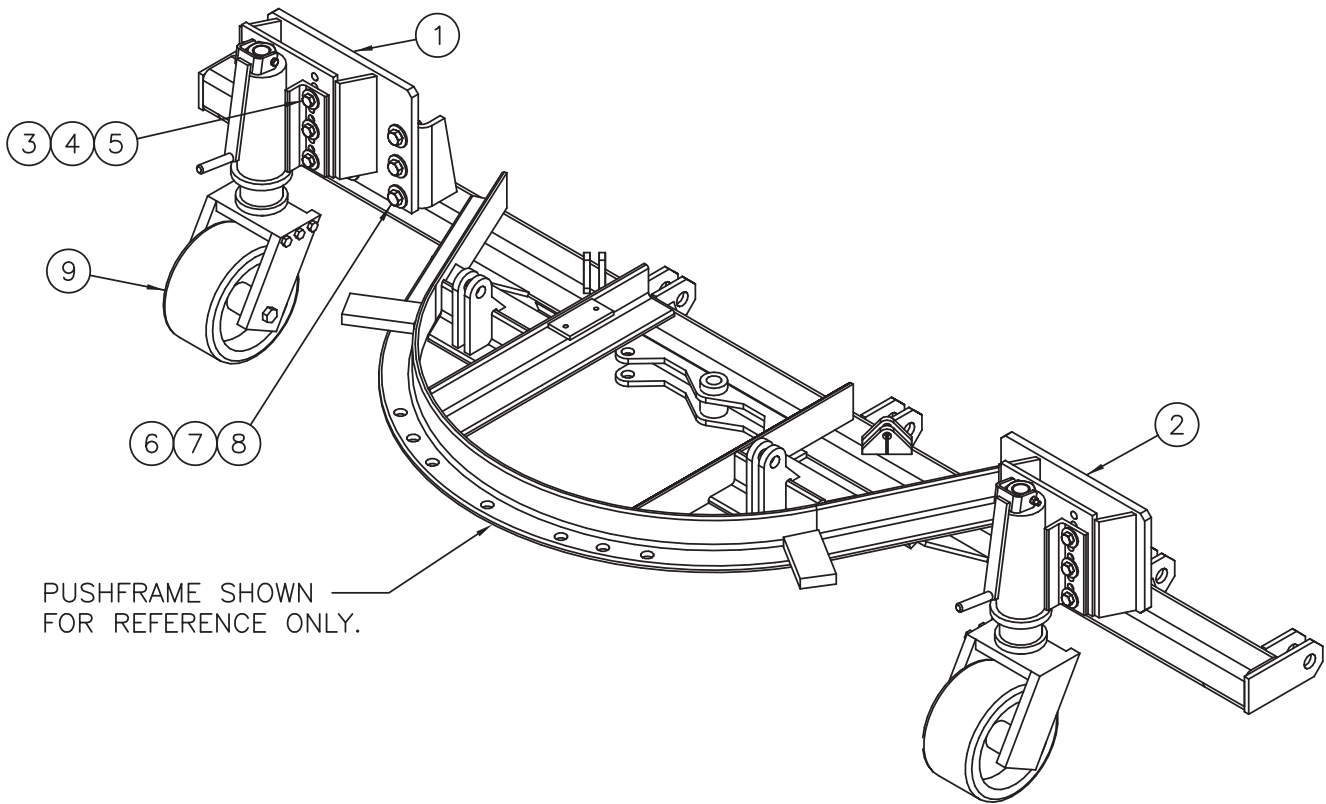
\_\_\_\_\_

\_\_\_\_\_

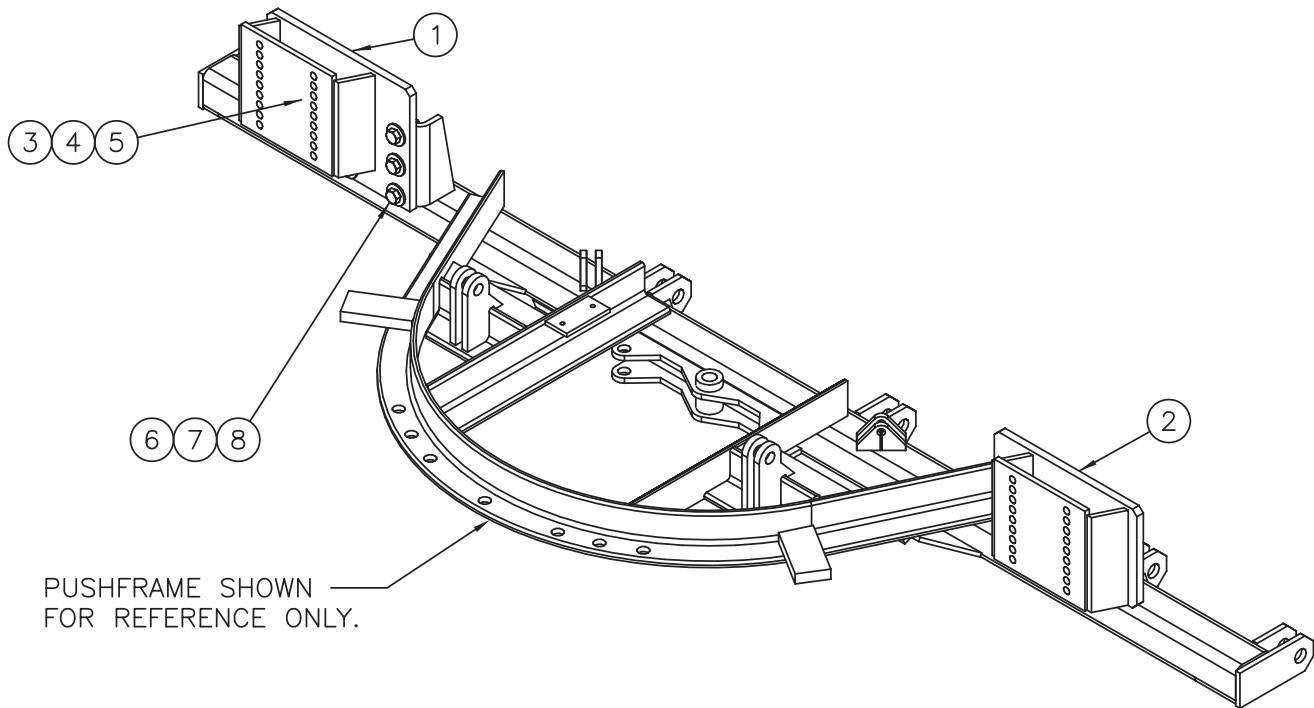
1 0505231



00055962 DECAL KIT, PLOW			
Item	Qty.	Part Number	Description
1	1	05051507	DECAL,MONROE SNOWFLOW,12x5
2	1	05050681	DECAL,4" x2",BONDED POWDER
3	1	05052311	DECAL,4" X 3" QUALITY CHECK
4	1	05052547	DECAL,WARNING SPRINGS UNDER TENSION
5	1	05052628	DECAL,WARNING,TIGHTEN FASTENERS



00149801 SNOW WHEEL KIT, RVS,4, 5, 6 ATCH 10'-12', W/ SNOW WHEEL			
ITEM	QTY	PART NUMBER	DESCRIPTION
1	1	00148093	EXT PL WLDMT,LH,SNOW WHEEL,
2	1	00148094	EXT PL WLDMT,RH,SNOW WHEEL,
3	12	05010739	BOLT .625-11 x 2.00 G8 HHCS ZC
4	12	05020837	NUT .625-11 GC TOPLOCK C&W
5	24	05021311	WASHER .625 FLAT ZC
6	12	05010766	BOLT .750-10 x 2.50 G8 HHCS ZC
7	12	05020849	NUT .750-10 GC TOPLOCK C&W
8	24	05021312	WASHER .750 FLAT ZC
9	2	05050762	WHEEL,SWIVEL W/ADJUSTER,6509



**00148092 SNOW WHEEL KIT, RVS, 4, 5, 6 ATCH, 10'-12', W/O SNOW WHEELS**

ITEM	QTY	PART NUMBER	DESCRIPTION
1	1	00148093	EXT PL WLDMT,LH,SNOW WHEEL,
2	1	00148094	EXT PL WLDMT,RH,SNOW WHEEL,
3	12	05010739	BOLT .625-11 x 2.00 G8 HHCS ZC
4	12	05020837	NUT .625-11 GC TOPLOCK C&W
5	24	05021311	WASHER .625 FLAT ZC
6	12	05010766	BOLT .750-10 x 2.50 G8 HHCS ZC
7	12	05020849	NUT .750-10 GC TOPLOCK C&W
8	24	05021312	WASHER .750 FLAT ZC



## MONROE TRUCK EQUIPMENT, INC. WARRANTY SNOW & ICE CONTROL PRODUCTS

**Monroe Truck Equipment, Inc.** warrants to the original purchaser, that if any part of the product proves to be defective in workmanship or material within **ONE YEAR** of the original installation, and is returned to us within 30 days of the discovered defect, we will (at our option) repair or replace the defective part. This warranty does not apply to damage resulting from misuse, neglect, accident, improper installation, normal wear items or lack of maintenance. This warranty is exclusive and supersedes all other warranties, whether expressed or implied. **Monroe Truck Equipment, Inc.** neither assumes, nor authorizes anyone to assume for it, any other obligation or liability in connection with this warranty and will not be liable for consequential damages.

All engines, pumps, motors, cylinders and valves are warranted by their manufacturer and not by **Monroe Truck Equipment, Inc.**. The manufacturer's warranty will apply to these parts. Electrical and hydraulic components are not to be disassembled without the express written permission of Monroe Truck Equipment. Use of replacement parts other than original equipment voids this warranty.

All defective parts returned must be accompanied by the model number, serial number, date installed, date of defect, description of defect, and the name of the distributor from whom it was purchased. All warranty claims must have prior written approval from **Monroe Truck Equipment, Inc.**

***Please return the warranty registration card that accompanies this manual to confirm receipt of this parts catalog and acknowledge the information contained within. Failure to return the attached card may result in a voided warranty.***



1051 West 7<sup>th</sup> Street  
 Monroe, WI 53566  
 608-328-8127 ~ Fax: 608-328-4278

## **Warranty Policy**

### **Uninstalled Parts and Equipment Provided by Monroe Truck Equipment**

Monroe Truck Equipment will provide the following limited warranty for a period of one year to the original purchaser of all uninstalled goods provided by Monroe Truck Equipment:

**LIMITED WARRANTY:** All goods provided by Monroe Truck Equipment (MTE) will be free from defects in material and workmanship for a period of one year from the date of purchase by the original purchaser. This limited warranty shall be the sole and exclusive remedy for any such product found to be defective. This limited warranty supercedes all previous warranties and is exclusive and in lieu of all other warranties, whether expressed or implied.

This limited warranty applies only to parts or accessories manufactured by MTE and/or provided by same. Except with respect to title, this limited warranty does not pertain to parts or accessories not manufactured and/or provided by MTE, regardless of whether such parts or accessories were selected and/or recommended by MTE. MTE will, as a service to the buyer, pass on any warranties received from the original manufacturer of MTE provided parts and/or accessories.

MTE will not under any circumstances be liable for any incidental or consequential damages whether in tort, contract, or otherwise, for any bodily injury, death, property damage, loss of use, or loss of income resulting from or in any way arising out of any goods provided by MTE, or their sale, use, or manufacture.

Any warranty claim deemed to be arising from the result of misuse, abuse, neglect, accident, improper installation, lack of maintenance, act of war (whether declared or otherwise), or act of God will be denied. Any repair or modification by the buyer or any third party, without the prior written consent of MTE, will void any possible warranty compensation. Any damage deemed to be the result of abnormal operation will not be compensated by this warranty.

Normal or special maintenance items such as fuels, fluids, tires, belts, hoses, filters, air cleaners, light bulbs, and any other items subject to normal wear and tear that are supplied in connection with goods provided by MTE are not allowed under this warranty.

All engines, pumps, cylinders, valves, and motors are warranted by their manufacturer and not by Monroe Truck Equipment. The manufacturer's warranty will apply to these parts. Electrical and hydraulic components are not to be disassembled without the express written consent of MTE. Any disassembly of MTE provided components without prior authorization will void the applicable warranty.

Monroe Truck Equipment shall be the sole and final determining authority as it applies to the administration of this warranty policy. Purchaser acknowledges receipt of Monroe Truck Equipment Warranty Policy and agrees to be bound by same.



**GLOBAL SOLUTIONS**  
 ARMORED VEHICLES ~ SPORT TRUCK CONVERSIONS  
 MUNICIPAL SNOW & ICE CONTROL ~ FIRE APPARATUS  
 PICKUP TRUCK ACCESSORIES ~ TRUCK EQUIPMENT/MODIFICATIONS





1051 West 7<sup>th</sup> Street  
Monroe, WI 53566  
608-328-8127 ~ Fax: 608-328-4278

Any and all warranty claims must be forwarded to MTE within 10 days of defect discovery. A copy of the original Monroe Truck Equipment invoice as well as the manufacturer's model number, serial number, and date of installation must accompany all correspondence regarding said claims. MTE will, at their option, choose whether to repair or replace the defective part unless otherwise specified by the original manufacturer of said part.

### **Procedures for Warranty Claims Notification**

For submission of any warranty claim please contact Monroe Truck Equipment – Warranty Department at 800-356-8134

The following documentation will be needed when you call for initial warranty authorization:

1. A copy of the original MTE invoice.
2. Make, Model, and VIN or Serial Number of the equipment involved.
3. Part number and serial number of the part in question.
4. A complete description of the problem.

The following must accompany any claim submitted to Monroe Truck Equipment:

1. Documented photographs of any physical damage.
2. Inspection notes by MTE personnel or MTE authorized 3<sup>rd</sup> party.
3. Authorization number issued by Monroe Truck Equipment – Warranty Department.

**Defective parts must be returned to Monroe Truck Equipment (freight prepaid) within 30 days of issuance of Authorization Number.**

**Monroe Truck Equipment reserves the right to void any warranty for failure to comply with Monroe Truck Equipment Warranty Policy.**

**This policy is effective October 11, 2012**



