



Parts & Service Manual for REVERSIBLE PLOWS

**Full Moldboard
Compression, Bullet, Mechanical
& Extension Trip**



Monroe Snow & Ice Control
1051 W. 7th Street • Monroe, WI 53566
USA: 877-834-9049 • Fax: 608-329-8488
www.monroetruck.com

05051708-21
2/5/2016

Table of Contents

General Information	10
How to Order Parts	10
Return Policy	10
Safety Instructions	2
Maintenance Instructions	3
Operating Instructions	7
Replacement Parts	11
Warranty	61

Safety Instructions

WARNING

Before working under the vehicle or around the plow, shut off the truck engine and remove the key from the ignition. Prevent accidental hydraulic system startup and operation of the plow to avoid personal injury!

- Locate and read all safety decals on the unit before operating the equipment. Familiarize yourself with all potential hazards in operating this equipment.
- Read all installation, operation, and maintenance instructions before operating the equipment.
- Be aware of the extra vehicle length and width created by the plow installation. Allow for the extra width when driving in traffic, passing parked vehicles, and entering buildings through overhead doors.
- Maximum recommended plowing speed is 35 mph.
- For transport, plows with angle cylinders should be angled fully to the right to reduce the overall width of the truck and plow.
- Maximum recommended transport speed is 45 mph.
- Stay away from the plow when it is moving (raise, lower, angle). Stay away from pinch points created by the moving plow components.
- Always lower the plow to the ground before leaving the vehicle unattended.
- Lower the plow to the ground before working on any of its components.
- Never work on or around the plow unless the vehicle is turned off and the ignition key is removed. Follow lock-out/tag procedures for working on hazardous equipment.
- Watch for hydraulic fluid leaks at fittings and hoses. High-pressure fluid leaks can penetrate skin and cause severe injury.
- Do not climb or walk on the plow or its mounting components, especially when the unit is wet or icy.
- If the plow needs repair or the controls are not functioning properly, repair the unit immediately. Do not continue to operate a malfunctioning unit—further and more serious damage may occur.
- Do not disassemble spring-loaded components such as trip edges and trip springs unless you have the correct tools and are trained in these tasks. Pre-loaded springs are under extreme compression and can cause severe injury if the spring force is released suddenly and unexpectedly.
- If the plow accidentally impacts an object during use, stop immediately and inspect all components. Look for bent and broken components. Do not continue to operate with a severely damaged plow.
- When removing and storing a plow for summer, locate it away from high traffic areas and block it securely so it cannot fall or be pushed over.

Maintenance Instructions

Due to the nature of plow use and the environment that plows operate in, wear and damage can be expected during the life of a plow. For maximum safety, durability, and longevity of a plow, end users must establish and follow a maintenance schedule and a storage procedure.

Plowing Season

Plow Mechanical

- Check the operation of all plow functions prior to a snow event. Make sure the plow is working properly before starting to plow.
- Retighten all fasteners after the first 8 hours of plowing.
- Lubricate all grease points every 10 hours under normal use and more frequently under heavy use.
- Inspect all threaded fasteners after each plowing event. Retighten as necessary.
- Inspect any pivot pins (unthreaded) after each plowing event. Make sure cotter pins, lynch pins, or spring clips are in place in the pivot pins.
- Check trip spring tension after each plowing event (adjustable springs only).
- Inspect the cutting edge after each plowing event. Replace the cutting edge when the bottom edge is ½" from the bottom angle of the moldboard.
- If the plow impacts a fixed object above 5 mph, stop and inspect the plow and hitch closely for bending or fracturing of metal components.

Hydraulics

- All reversible plows must have a 30 gpm (minimum) cross-over relief valve between the reversing cylinders. The required relief pressure is 1,800 psig for 3-inch cylinders and 1,000 psig for 4-inch cylinders. This relief valve protects the plow, the hitch, and the vehicle from damage if the plow hits a fixed object when partially angled.
- If MTE did not install the plow, the end user is responsible for installing a cross-over relief valve.
- Check the level in the hydraulic reservoir weekly. Use only the type of fluid recommended by the hydraulics supplier.
- Check for fluid leaks at hydraulic fittings and hoses weekly. Repair leaks immediately.
- Tighten all hydraulic fittings annually or more often during frequent use of the hydraulic system.
- Unless otherwise specified, system pressure must not exceed 2,000 psig.
- Do not make adjustments to hydraulic system pressures without consulting MTE.

Maintenance Instructions *(Continued)*

Electrical

- Check the plow lights and turn signals each day.
- Keep wiring harnesses tied up so they don't drag on the ground or get snagged by moving components. Keep wiring off sharp edges that could cut through the wire insulation.
- Keep electrical connectors pushed together tightly to reduce entry of water and road salt.
- Pull electrical connectors apart once a month to check for corrosion. Re-apply dielectric grease each time a connector is pulled apart.
- If a fuse blows, replace it with a fuse of the same amperage rating as the original. If a fuse keeps blowing, investigate the reason for the overload condition.

Off Season

- Inspect the plow and check the operation of all functions before removing the plow for the season. Determine if there are any problems with the plow and its controls before storing it for the off season. Schedule repairs and parts replacements before the start of the next snow season.
- Inspect all fasteners for looseness and corrosion. If fasteners are removed during plow removal, inspect for damaged threads, bending, and signs of shearing forces. Damaged fasteners must be replaced. Split lock washers and clincher-type lock nuts should not be reused.
- Lubricate all grease points before storing the plow.
- Retract hydraulic cylinders as far as possible to protect the polished ram surfaces from corrosion. Apply a heavy coat of grease to the remaining exposed ram to protect it from corrosion.
- Cap and plug the ends of quick disconnects on hydraulic hoses when disconnecting them. Dirt that gets on the disconnect halves will enter the hydraulic system when the hoses are reconnected. Wipe the quick disconnect ends with a clean rag before reconnecting them.
- If the plow is stored outside, cover electrical wiring, hydraulic hoses, and plastic parts to protect from sunlight and UV damage. Store the plow inside a building if possible.

Replacing the Cutting Edge

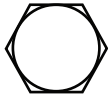

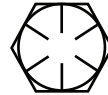
1. Raise the plow as high as possible and block it up under the hitch. Do not work under the plow if it is supported only by the hydraulic system.
2. Inspect the old cutting edge for uneven wear or damage that could indicate other problems with or improper operation of the plow.
3. Remove the old cutting edge fasteners. The old fasteners will typically be corroded and/or damaged. If necessary, cut off the fasteners with a torch. Be careful not to damage the moldboard.
4. Never re-use the old fasteners. Make sure you have new fasteners before removing the old cutting edge. Fasteners must be Grade 8.
5. With the old cutting edge removed, inspect the mounting area on the moldboard. Look for severe corrosion, bending, and impact damage. Clean off dirt and surface corrosion and check the mounting face with a straight edge. A bent or damaged mounting surface will make it difficult to keep the cutting edge fasteners tight and in severe cases, may cause plow chatter.
6. Severe damage to the moldboard must be repaired before a new cutting edge is installed and the plow is returned to service. In some cases the moldboard may need to be replaced.
7. Use a scraper and light sanding to remove all dirt and corrosion from the mounting face on the moldboard. The new cutting edge must rest flat on the moldboard for proper clamping force when the fasteners are tightened.
8. Check the mounting face of the new cutting edge for dirt, corrosion, paint and other contamination. Clean any contamination off the cutting edge mounting face.
9. Hold the cutting edge up to the moldboard. Make sure it fits properly and sits flat against the moldboard. Make sure all the fastener holes line up between the cutting edge and the moldboard.

(Continued on the following page.)

Replacing the Cutting Edge *(Continued)*

10. Note the required installation direction for carriage-type bolts and insert the fasteners. Start the nuts on to the bolt threads. Flanged top-lock (clicher) nuts are recommended. Standard top-lock nuts with hardened flat washers are also acceptable. Standard nuts with split lock washers are supplied with some installations but are not recommended. Do not use nylon-insert type lock nuts. Non-hardening (blue) thread locker is recommended for any fastener used.
11. Snug all the nuts down just enough to hold the cutting edge in the proper position.
12. Starting at the middle of the cutting edge and working outward, tighten the fasteners with a calibrated torque wrench. Use the recommended torque for Grade 8 bolts and the type of nut being used.
13. After the first four hours of plow operation with the new cutting edge, tighten the fasteners again.
14. Check the fasteners for condition and tightness prior to or just after each storm event.

Torque Chart

SIZE	 GRADE 2	 GRADE 5	 GRADE 8
1/4-20	50 IN-LBS	75 IN-LBS	9 FT-LBS
3/8-16	15 FT-LBS	23 FT-LBS	35 FT-LBS
1/2-13	35 FT-LBS	55 FT-LBS	80 FT-LBS
5/8-11	75 FT-LBS	110 FT-LBS	170 FT-LBS
3/4-10	130 FT-LBS	200 FT-LBS	280 FT-LBS
1-8	190 FT-LBS	480 FT-LBS	680 FT-LBS
1 1/4-7	380 FT-LBS	840 FT-LBS	1,360 FT-LBS

Operation Guidelines

Definitions

Back-Dragging: Driving over snow, dropping the plow blade, and pulling snow backwards. Used to clear snow from around buildings, garage doors, etc. Snow is typically pulled back far enough to gain access to push it away using normal plowing techniques.

Windrowing: Process of plowing from the middle of a parking area and creating a row of piled snow that is pushed further aside with each pass of the plow vehicle or left in an area where it does not obstruct traffic.

Reversing: Angling the plow blade to the left to change the direction of snow movement. Pushing snow to the right on a road is considered the normal plowing angle.

Stacking: Pushing snow up on to an existing snow pile to gain more room in a parking area, etc.

- Know the locations of fixed obstacles in the area to be plowed. This is best done by studying the area to be plowed before the first storm and noting items like fire hydrants and culverts. Hydrants, gas mains, water risers and other objects likely to be in the path of a plow should be flagged early in the season.
- Have a plan for where to push the snow you are plowing. Push snow into areas where it can remain throughout the winter. If it's early in the season, remember to leave room for future storms.
- Maximum recommended plowing speed is 35 mph, and slower where there are many obstructions.
- For snow close to buildings and overhead doors, drive straight up to the building or door. Drop the plow and backdrag the snow to a point where you can plow it away perpendicular to the building.
- Unless you are backdragging snow, raise the blade when backing up.
- Avoid trying to "stack" snow too high—this stresses the plow hitch and may cause mechanical damage. Keep snow pushed back as far as possible early in the season so there is room to store it without high stacking.
- Avoid "ramming" into snow piles at plowing speed. This can damage the plow and the vehicle.
- Do not plow snow into public streets where it will obstruct traffic. This is illegal in most areas.
- Do not push snow into streams, rivers, or lakes. Salt and debris in the snow may contaminate surface water.
- Do not cover storm drains with snow piles. Drains need to remain open to prevent flooding when the snow thaws.

Operation Guidelines *(Continued)*

Plow Float Function, Double Acting Hydraulic Cylinder

- Your plow may be equipped with a “Float” function. Float is used when the plow is on the ground and plowing snow.
- When the Float function is engaged, the plow is free to move up and down. This allows the plow to follow ground contours better and lets the plow ride up if it hits a large obstruction.
- For systems with a double acting hydraulic lift cylinder, Float overrides the normal power circuits for the cylinder and allows it to move freely.
- Float should be engaged at all times when plowing. Plowing with the plow “powered down” may cause plow or vehicle damage or loss of vehicle control.
- Do not “power down” plow except when back-dragging at low speed.
- For hydraulic systems with manual control levers, the Float function is a detent in the spool valve. The plow lever must be pushed all the way forward where it will remain until manually pulled back. Make sure the plow lever stays in the detent position when you remove your hand from the lever.
- For hydraulic systems with electric valves and controls, the Float function is typically engaged by a spring-return toggle switch on a joystick. The switch must be pressed each time the plow is lowered to the ground. The Float function typically disengages automatically when the joystick is pulled back to raise the plow.
- If you believe the Float function is not operating properly, have the system checked and repaired as soon as possible.

Operation Guidelines *(Continued)*

Cross-Over Relief Valve

- Each plow is equipped with a cross-over relief valve that protects the plow and vehicle from damage if an outboard edge of the plow impacts a fixed object. A heavy impact causes the relief valve to open, transferring hydraulic fluid from one reversing cylinder to the other. This allows the blade to angle back and away from the impacted object.
- The standard pressure relief setting for Monroe Truck Equipment installed valves is 1,800 psi. For most plows, this provides the best balance between protecting the plow and vehicle and preventing the plow from “drifting” back to full angle under normal plowing conditions.
- NOTE: If the plow blade is angled all the way back to a stop, the relief valve will not have any effect if the blade impacts a fixed object.
- Under normal circumstances, the pressure relief valve should not be adjusted or tampered with.
- If necessary, the relief pressure set point can be adjusted to a lower pressure to let the valve relieve during lighter impacts. However, this will result in more “drifting” of the blade while plowing.
- Never increase the relief pressure set point - this can lead to damage to the plow blade, hitch and possibly the vehicle.
- Whenever the relief valve is checked or adjusted, install a pressure gauge in the hydraulic circuit to monitor pressure. Never make adjustments to a hydraulic system without gauges to monitor pressures.

General Information

- Use only Monroe Truck Equipment O.E.M. replacement parts. Failure to do so will void the warranty.
- Location descriptions are noted in direction of travel (i.e. front, rear, left and right).
- Delivery of replacement parts is subject to our sales delivery terms.
- Replacement parts listed in this manual reflect the most common items for this product. If you do not find the part you require, please call your distributor.
- Monroe Truck Equipment reserves the right to make revisions or alterations to the parts manual at any time.

How to Order Parts

To order or inquire about replacement parts, please contact the distributor or store that the product was purchased through. To speed the information flow, please have the following information available:

- Model Number
- Serial Number
- Part Number and/or Description of the Part
- Quantity Needed

For further information about Monroe Truck Equipment replacement parts, please call 877-834-9049.

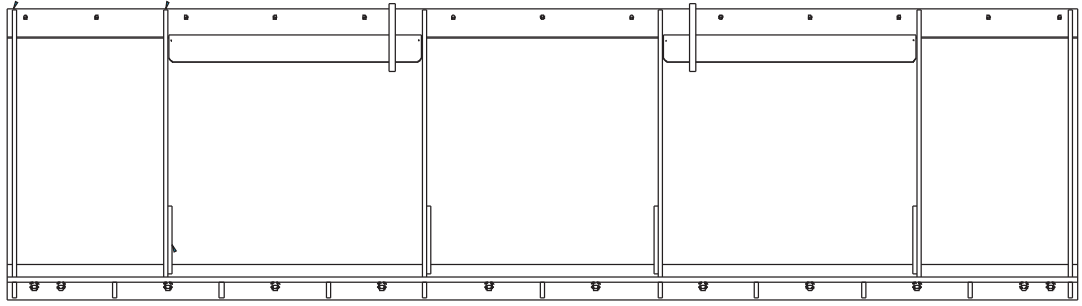
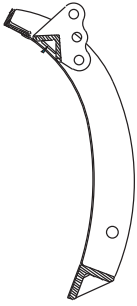
Return Policy

Merchandise returned to Monroe Truck Equipment must have a Warranty Service Request (WSR) form filled out completely and signed by authorized personnel.

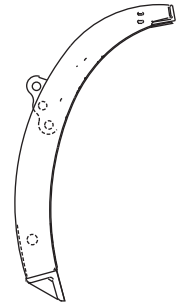
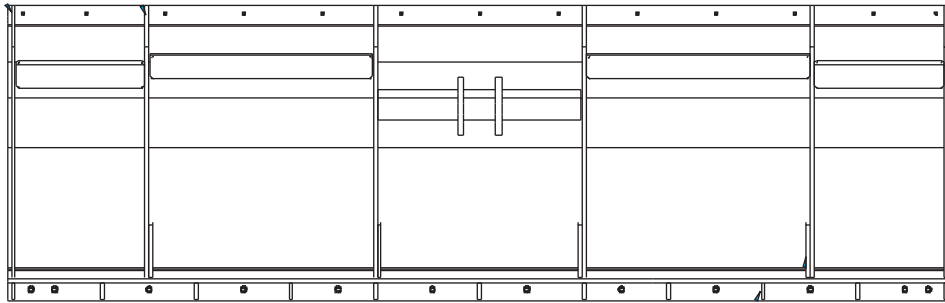
To get your WSR form for whole goods, call Snow & Ice Sales at 800-880-0109.

To get your WSR form for replacement parts, call Warranty at 877-834-9049..

All returned items are subject to a 15% restocking fee and **must be sent freight pre-paid.**

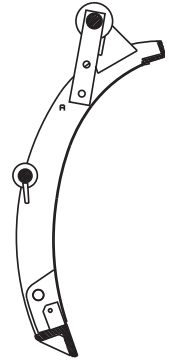
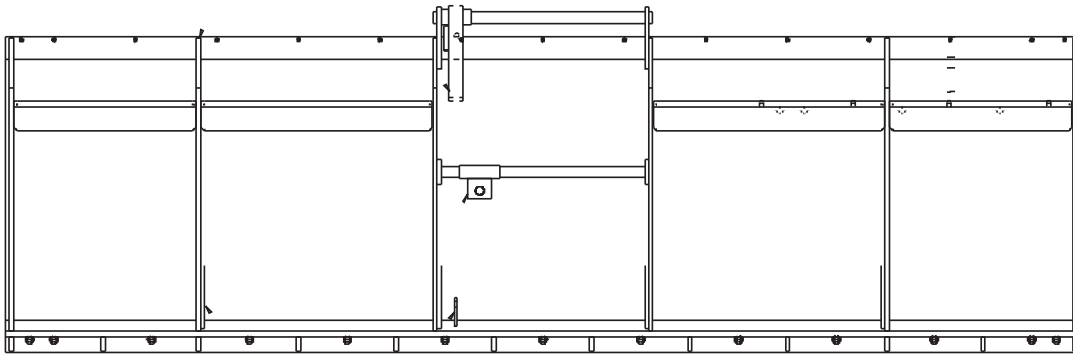


FULL MOLDBOARD COMPRESSION TRIP REVERSIBLE 10 GAUGE WELDMENTS			
	Qty	Part Number	Description
COMPRESSION TRIP	36"	00090002	MOLDBOARD WELDMENT, PLOW, MP36R10-CT
		00090003	MOLDBOARD WELDMENT, PLOW, MP36R11-CT
		00090004	MOLDBOARD WELDMENT, PLOW, MP36R12-CT
	41"	00090434	MOLDBOARD WELDMENT, PLOW, MP41R10-CT
		00141365	MOLDBOARD WELDMENT, PLOW, MP41R10-CT
		00090435	MOLDBOARD WELDMENT, PLOW, MP41R11-CT
		00090436	MOLDBOARD WELDMENT, PLOW, MP41R12-CT
	48"	00090866	MOLDBOARD WELDMENT, PLOW, MP48R10-CT
		00090867	MOLDBOARD WELDMENT, PLOW, MP48R11-CT
	00090868	MOLDBOARD WELDMENT, PLOW, MP48R12-CT	
INTEGRAL SHIELD COMPRESSION TRIP	36"	00090137	MOLDBOARD WELDMENT, PLOW, MP36R10-ISCT
		00090138	MOLDBOARD WELDMENT, PLOW, MP36R11-ISCT
		00090139	MOLDBOARD WELDMENT, PLOW, MP36R12-ISCT
	41"	00090569	MOLDBOARD WELDMENT, PLOW, MP41R10-ISCT
		00090570	MOLDBOARD WELDMENT, PLOW, MP41R11-ISCT
		00074633	MOLDBOARD WELDMENT, PLOW, MP41R11-ISCT
		00157354	MOLDBOARD WELDMENT, PLOW, MP41R11-ISCT
		00090571	MOLDBOARD WELDMENT, PLOW, MP41R12-ISCT
	48"	00091001	MOLDBOARD WELDMENT, PLOW, MP48R10-ISCT
	00091002	MOLDBOARD WELDMENT, PLOW, MP48R11-ISCT	
	00091003	MOLDBOARD WELDMENT, PLOW, MP48R12-ISCT	
		SEE PAGE 15	CUTTING EDGE KITS
		SEE PAGE 18	TRIP KITS
		SEE PAGE 22	PUSHFRAME KIT, REVERSING
		SEE PAGE 37	REVERSING KIT, 3X10 CYLINDER
		SEE PAGE 58	DECAL KIT, PLOW



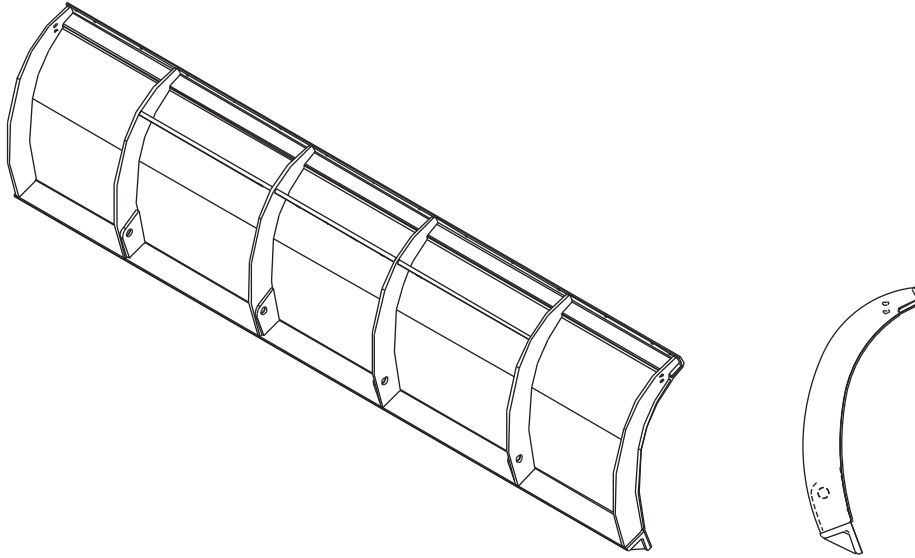
**FULL MOLDBOARD CANISTER (BULLET) TRIP REVERSIBLE
10 GAUGE WELDMENTS**

		Qty	Part Number	Description
BULLET TRIP	36"	1	00092594	MOLDBOARD WELDMENT, PLOW, MP36R10-BT
			00092595	MOLDBOARD WELDMENT, PLOW, MP36R11-BT
			00092593	MOLDBOARD WELDMENT, PLOW, MP36R12-BT
41"	00093026		MOLDBOARD WELDMENT, PLOW, MP41R10-BT	
	00093027		MOLDBOARD WELDMENT, PLOW, MP41R11-BT	
	00093028		MOLDBOARD WELDMENT, PLOW, MP41R12-BT	
48"	00093458		MOLDBOARD WELDMENT, PLOW, MP48R10-BT	
	00093459		MOLDBOARD WELDMENT, PLOW, MP48R11-BT	
	00093460		MOLDBOARD WELDMENT, PLOW, MP48R12-BT	
INTEGRAL SHIELD BULLET TRIP	36"		00092729	MOLDBOARD WELDMENT, PLOW, MP36R10-ISBT
		00092730	MOLDBOARD WELDMENT, PLOW, MP36R11-ISBT	
		00092731	MOLDBOARD WELDMENT, PLOW, MP36R12-ISBT	
41"	00157386	MOLDBOARD WELDMENT, PLOW, MP41R9-ISBT		
	00093161	MOLDBOARD WELDMENT, PLOW, MP41R10-ISBT		
	00093162	MOLDBOARD WELDMENT, PLOW, MP41R11-ISBT		
	00093163	MOLDBOARD WELDMENT, PLOW, MP41R12-ISBT		
48"	00093593	MOLDBOARD WELDMENT, PLOW, MP48R10-ISBT		
	00093594	MOLDBOARD WELDMENT, PLOW, MP48R11-ISBT		
	00093595	MOLDBOARD WELDMENT, PLOW, MP48R12-ISBT		
			SEE PAGE 15	CUTTING EDGE KITS
			SEE PAGE 18	TRIP KITS
			SEE PAGE 22	PUSHFRAME KIT, REVERSING
			SEE PAGE 37	REVERSING KIT, 3X10 CYLINDER
			SEE PAGE 58	DECAL KIT, PLOW



**FULL MOLDBOARD MECHANICAL TRIP REVERSIBLE
10 GAUGE WELDMENTS**

		Qty	Part Number	Description
MECHANICAL TRIP	36"	1	00091298	MOLDBOARD WELDMENT, PLOW, MP36R10-MT
			00091299	MOLDBOARD WELDMENT, PLOW, MP36R11-MT
			00091300	MOLDBOARD WELDMENT, PLOW, MP36R12-MT
	41"		00091730	MOLDBOARD WELDMENT, PLOW, MP41R10-MT
			00091731	MOLDBOARD WELDMENT, PLOW, MP41R11-MT
			00091732	MOLDBOARD WELDMENT, PLOW, MP41R12-MT
	48"		00092162	MOLDBOARD WELDMENT, PLOW, MP48R10-MT
			00092163	MOLDBOARD WELDMENT, PLOW, MP48R11-MT
			00092164	MOLDBOARD WELDMENT, PLOW, MP48R12-MT
INTEGRAL SHIELD MECHANICAL TRIP	36"	00091433	MOLDBOARD WELDMENT, PLOW, MP36R10-ISMT	
		00091434	MOLDBOARD WELDMENT, PLOW, MP36R11-ISMT	
		00091435	MOLDBOARD WELDMENT, PLOW, MP36R12-ISMT	
	41"	00091865	MOLDBOARD WELDMENT, PLOW, MP41R10-ISMT	
		00091866	MOLDBOARD WELDMENT, PLOW, MP41R11-ISMT	
		00091867	MOLDBOARD WELDMENT, PLOW, MP41R12-ISMT	
	48"	00092297	MOLDBOARD WELDMENT, PLOW, MP48R10-ISMT	
		00092298	MOLDBOARD WELDMENT, PLOW, MP48R11-ISMT	
		00092299	MOLDBOARD WELDMENT, PLOW, MP48R12-ISMT	
			SEE PAGE 15	CUTTING EDGE KITS
			SEE PAGE 18	TRIP KITS
			SEE PAGE 22	PUSHFRAME KIT, REVERSING
			SEE PAGE 37	REVERSING KIT, 3X10 CYLINDER
			SEE PAGE 58	DECAL KIT, PLOW



FULL MOLDBOARD EXTENSION TRIP REVERSIBLE, 316

FULL MOLDBOARD EXTENSION TRIP REVERSIBLE, 316				
		Qty	Part Number	Description
EXT. TRIP	36"	1	00045719 00065748	MOLDBOARD WELDMENT, PLOW, MP36R10-EXT MOLDBOARD WELDMENT, PLOW, MP36R11-EXT
			SEE PAGE 15	CUTTING EDGE KITS
			SEE PAGE 18	TRIP KITS
			SEE PAGE 22	PUSHFRAME KIT, REVERSING
			SEE PAGE 37	REVERSING KIT, 3X10 CYLINDER
			SEE PAGE 58	DECAL KIT, PLOW

00049751 CUTTING EDGE KIT, 9', .625 X 8, TPCS

Item	Qty.	Part Number	Description
1	1	05031076	CUTTING EDGE, .625 X 8 X 9', 1084
2	11	05014551	BOLT, .625-11 X 2.5, G8, DH PLAIN
3	11	05021383	WASHER, .625, LOCK, HEAVY, ZINC
4	11	05020270	NUT, .625-11, G8, HEX, ZINC

**00049752 CUTTING EDGE KIT, 10', .625 X 8, TPCSK
00055919 CUTTING EDGE KIT, 10', .75 X 8, TPCS**

Item	Qty.	Part Number	Description
1	1	05031012 05031054	CUTTING EDGE, .625 X 8 X 10', 1084 CUTTING EDGE, .75 X 8 X 10', TPCS
2	12	05014551	BOLT, .625-11 X 2.5, G8, DH PLAIN
3	12	05021383	WASHER, .625, LOCK, HEAVY, ZINC
4	12	05020270	NUT, .625-11, G8, HEX, ZINC

**00049753 CUTTING EDGE KIT, 11', .625 X 8, TPCSK
00057905 CUTTING EDGE, 11', .625 X 8, CPCS**

Item	Qty.	Part Number	Description
1	1	05031013 05031016	CUTTING EDGE, .625 X 8 X 11', 1084 CUTTING EDGE, .625 X 8 X 11', CPCS
2	13	05014551	BOLT, .625-11 X 2.5, G8, DH PLAIN
3	13	05021383	WASHER, .625, LOCK, HEAVY, ZINC
4	13	05020270	NUT, .625-11, G8, HEX, ZINC

00049754 CUTTING EDGE KIT, 12', .625 X 8, TPCSK

Item	Qty.	Part Number	Description
1	1	05031014	CUTTING EDGE, .625 X 8 X 12', 1084
2	14	05014551	BOLT, .625-11 X 2.5, G8, DH PLAIN
3	14	05021383	WASHER, .625, LOCK, HEAVY, ZINC
4	14	05020270	NUT, .625-11, G8, HEX, ZINC

00055930 CUTTING EDGE KIT, 10', .75 X 6, CARBIDE, TPCS

Item	Qty.	Part Number	Description
1	2	05031082	CUTTING EDGE, 3', .75 X 6, CARBIDE, TPCS
2	1	05031083	CUTTING EDGE, 4', .75 X 6, CARBIDE, TPCS
3	1	05031030	CUTTING EDGE, 10', .5 X 6, TPCS
4	12	05014553	BOLT, .625-11 X 3, G8, DH, PLAIN
5	16	05021383	WASHER, .625, LOCK, HEAVY, ZINC
6	16	05020270	NUT, .625-11, G8, HEX, ZINC
7	4	05014551	BOLT, .625-11 X 2.5, G8, DH PLAIN

00055931 CUTTING EDGE KIT, 11', .75 X 6, CARBIDE, TPCS

Item	Qty.	Part Number	Description
1	1	05031082	CUTTING EDGE, 3', .75 X 6, CARBIDE, TPCS
2	2	05031083	CUTTING EDGE, 4', .75 X 6, CARBIDE, TPCS
3	1	05031031	CUTTING EDGE, 11', .5 X 6, TPCS
4	4	05014553	BOLT, .625-11 X 3, G8, DH, PLAIN
5	17	05021383	WASHER, .625, LOCK, HEAVY, ZINC
6	17	05020270	NUT, .625-11, G8, HEX, ZINC
7	13	05014555	BOLT, .625-11 X 2.5, G8, DH PLAIN

00055932 CUTTING EDGE KIT, 12', .75 X 6, CARBIDE, TPCS

Item	Qty.	Part Number	Description
1	3	05031083	CUTTING EDGE, 3', .75 X 6, CARBIDE, TPCS
2	1	05031032	CUTTING EDGE, 4', .75 X 6, CARBIDE, TPCS
3	14	05014553	BOLT, .625-11 X 3, G8, DH, PLAIN
4	18	05021383	WASHER, .625, LOCK, HEAVY, ZINC
5	18	05020270	NUT, .625-11, G8, HEX, ZINC
6	4	05014551	BOLT, .625-11 X 2.5, G8, DH, PLAIN

0005905 CUTTING EDGE KIT, 10', 1.5 X 10, RUBBER

Item	Qty.	Part Number	Description
1	1	05031022	CUTTING EDGE, 10', 1.5 X 10 RUBBER, CP SLOTTED
2	1	05031030	CUTTING EDGE, 10', .5 X 6, TPCS
3	12	05014557	BOLT, .625-11 X 4, G8, DH PLAIN
4	12	05021383	WASHER, .625, LOCK, HEAVY, ZINC
5	12	05020270	NUT, .625-11, G8, HEX, ZINC

0005926 CUTTING EDGE KIT, 11', 1.5 X 10, RUBBER

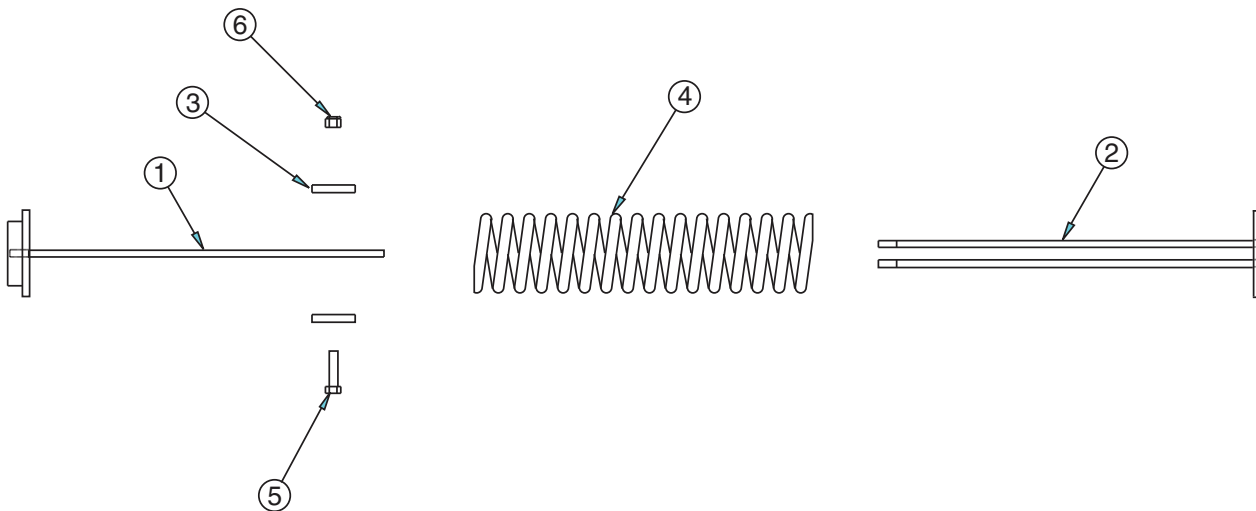
Item	Qty.	Part Number	Description
1	1	05031023	CUTTING EDGE, 11', 1.5 X 10 RUBBER, CP SLOTTED
2	1	05031031	CUTTING EDGE, 11', .5 X 6, TPCS
3	13	05014557	BOLT, .625-11 X 4, G8, DH PLAIN
4	13	05021383	WASHER, .625, LOCK, HEAVY, ZINC
5	13	05020270	NUT, .625-11, G8, HEX, ZINC

0005927 CUTTING EDGE KIT, 12', 1.5 X 10, RUBBER

Item	Qty.	Part Number	Description
1	1	05031024	CUTTING EDGE, 12', 1.5 X 10 RUBBER, CP SLOTTED
2	1	05031032	CUTTING EDGE, 12', .5 X 6, TPCS
3	14	05014560	BOLT, .625-11 X 4, G8, DH PLAIN
4	14	05021383	WASHER, .625, LOCK, HEAVY, ZINC
5	14	05020270	NUT, .625-11, G8, HEX, ZINC

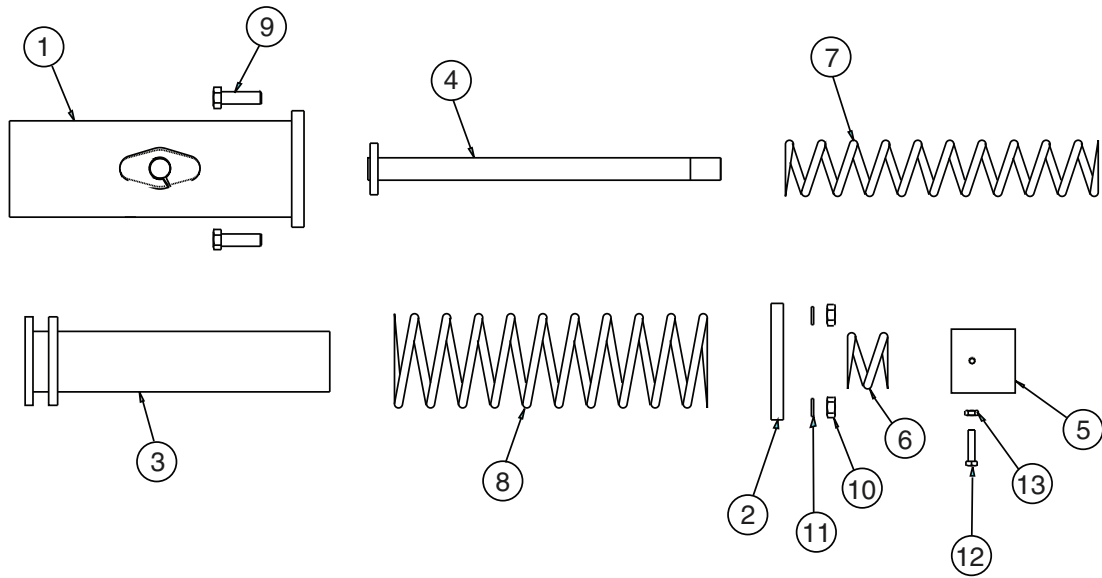
00050477 TRIP KIT, PLOW, CT
00050478 TRIP KIT, PLOW, CT, HD

Item	Qty.	Part Number	Description
1	2	00040163 00011999	SPRING, COMPRESSION TRIP ASSEMBLY SPRING, COMPRESSION TRIP ASSEMBLY, HD
2	4	05022051	PIN, 1 DIA X 3.25, FLAT, HD
3	4	05021202	BUSHING, 1.50 X 1 X 10GA, ZINC
4	4	05022026	PIN, .25 X 2, ROLL, ZINC



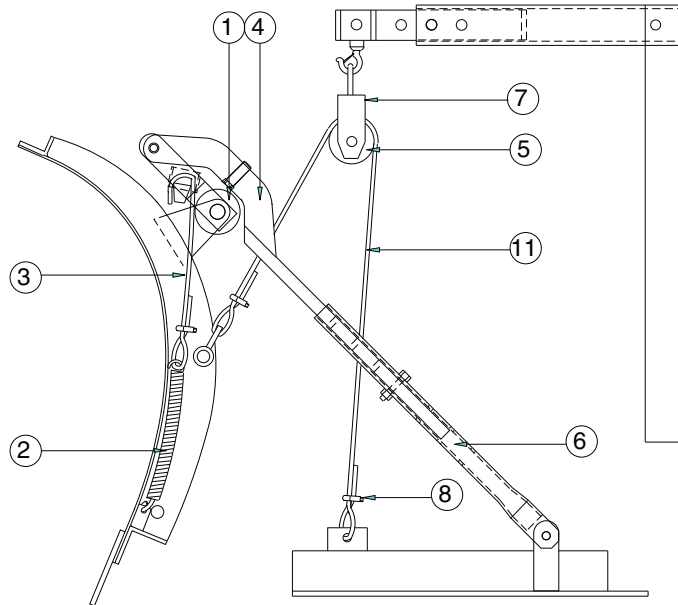
00040163 SPRING ASSEMBLY, PLOW, COMPRESSION TRIP
00011999 SPRING ASSEMBLY, PLOW, COMPRESSION TRIP, HD

Item	Qty.	Part Number	Description
1	1	00040164	SPRING, BRACKET, UPPER
2	1	00040165	SPRING, BRACKET, LOWER
3	2	00040167	RETAINER
4	1	05035007 05035037	SPRING, COMPRESSION, STANDARD SPRING, COMPRESSION, HEAVY DUTY
5	1	05010741	BOLT, .625"-11 X 2.5" HHCS, G8, ZINC
6	1	05020837	NUT, .625-1, GC, TOP LOCK, C&W



00040173 CANISTER (BULLET) TRIP KIT

Item	Qty.	Part Number	Description
1	1	00040174	OUTER TUBE ASSEMBLY
2	1	00040187	FLANGE, OUTER
3	1	00040175	INNER TUBE ASSEMBLY
4	1	00040176	SHAFT ASSEMBLY
5	1	00040188	CROSS HEAD
6	1	05035008	SPRING COMPRESSION
7	1	05035009	SPRING, COMPRESSION
8	1	05035010	SPRING, COMPRESSION
9	4	05010766	BOLT, .75-10 X 2.5, G8, ZNC
10	4	05020271	NUT, .75-10, GR5, PLAIN
11	4	05021384	WASHER, .75, LOCK, HEAVY, G8, ZINC
12	1	05015155	SET SCREW, SQUARE HEAD, .375-16 X 1
13	1	05020266	NUT, .375-16, G5, PLAIN

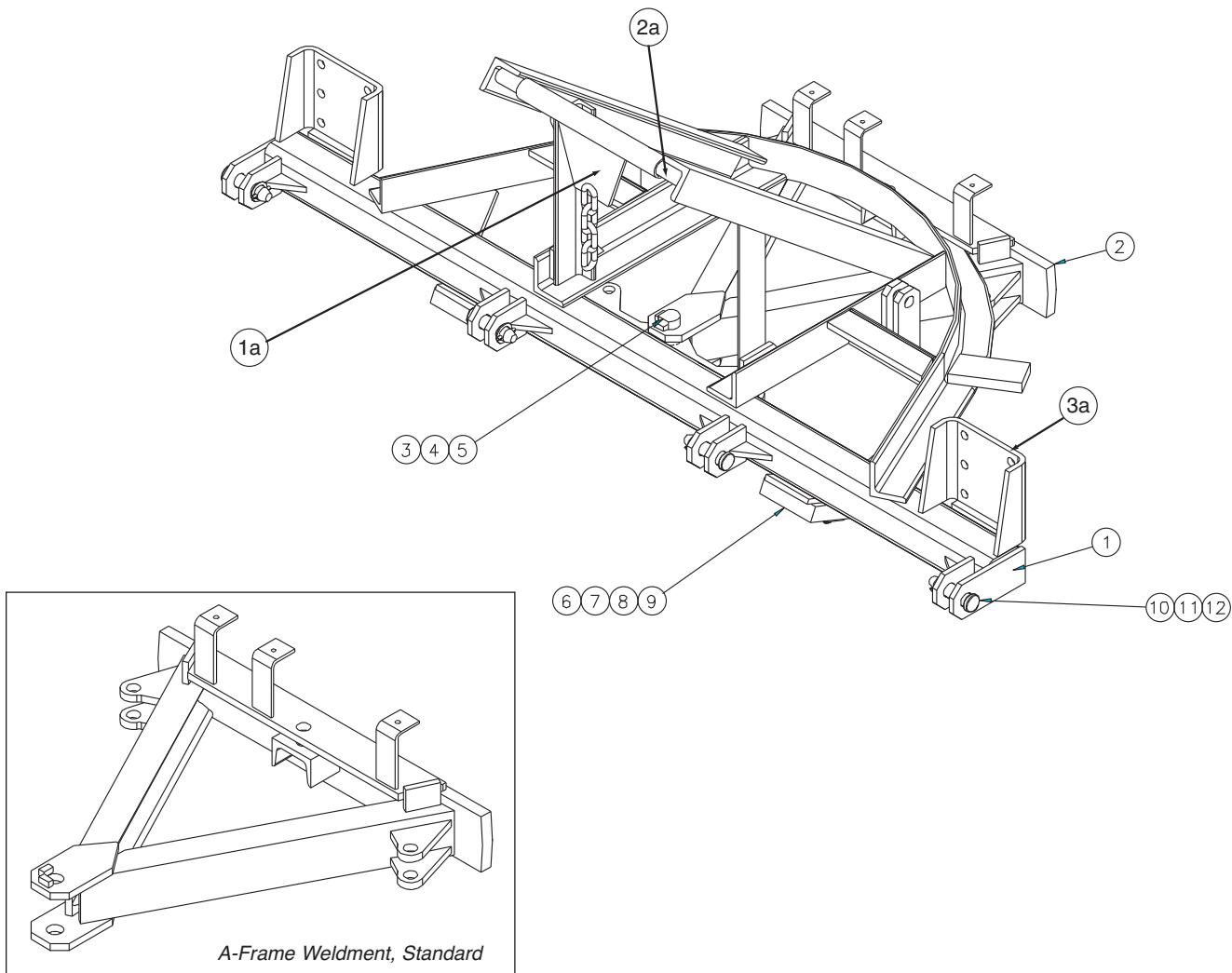


00058137 MECHANICAL TRIP KIT

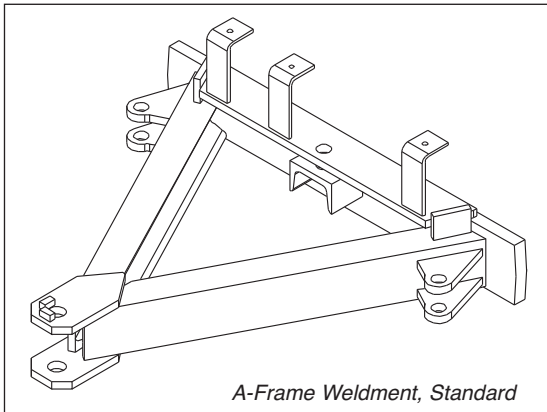
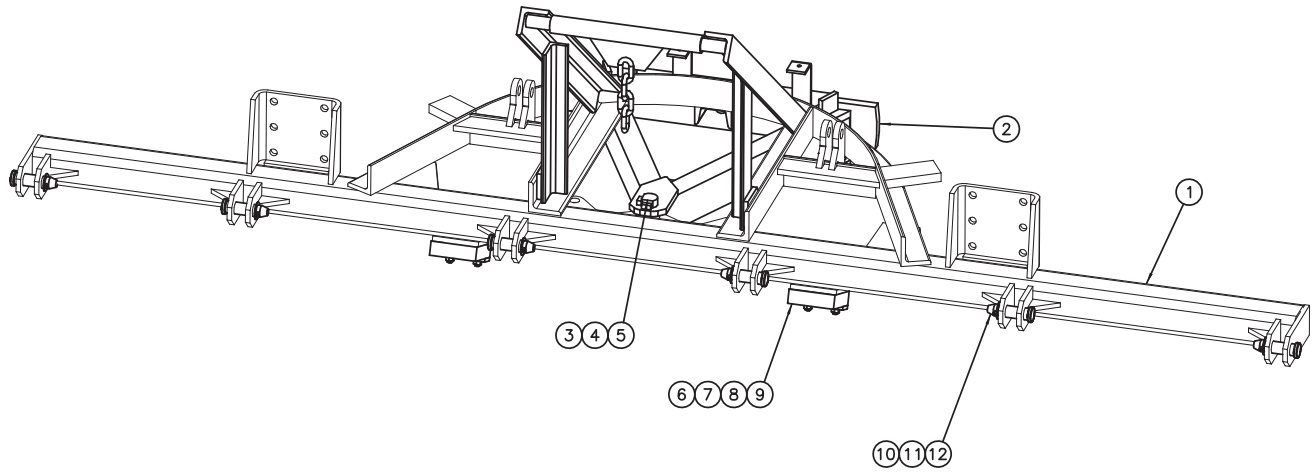
Item	Qty.	Part Number	Description
1	1	05034004	PULLEY, 1/2 CABLE, 4.5 X 1.5 BORE
2	1	05035013	SPRING, EXTENSION, .25 X 16.875
3	1	05050099	CABLE, MECHANICAL TRIP, .375 X 26
4	1	00094795	TRIP ARMS, UPPER MECHANICAL
5	1	00037356	PULLY ASSEMBLY
6	1	00094793	TRIP ARMS, LOWER MECHANICAL
7	2	05050097	THIMBLE, CABLE, .5"
8	4	05051000	CLAMP, CABLE, .5" MALLEABLE IRON
9	1	05050098	THIMBLE, CABLE FOR .375" CABLE
10	2	05051001	CLAMP CABLE, .375" MALLEABLE IRON
11	1	00010156	CABLE, .5 X 84"

00059552 EXTENSION SPRING TRIP KIT

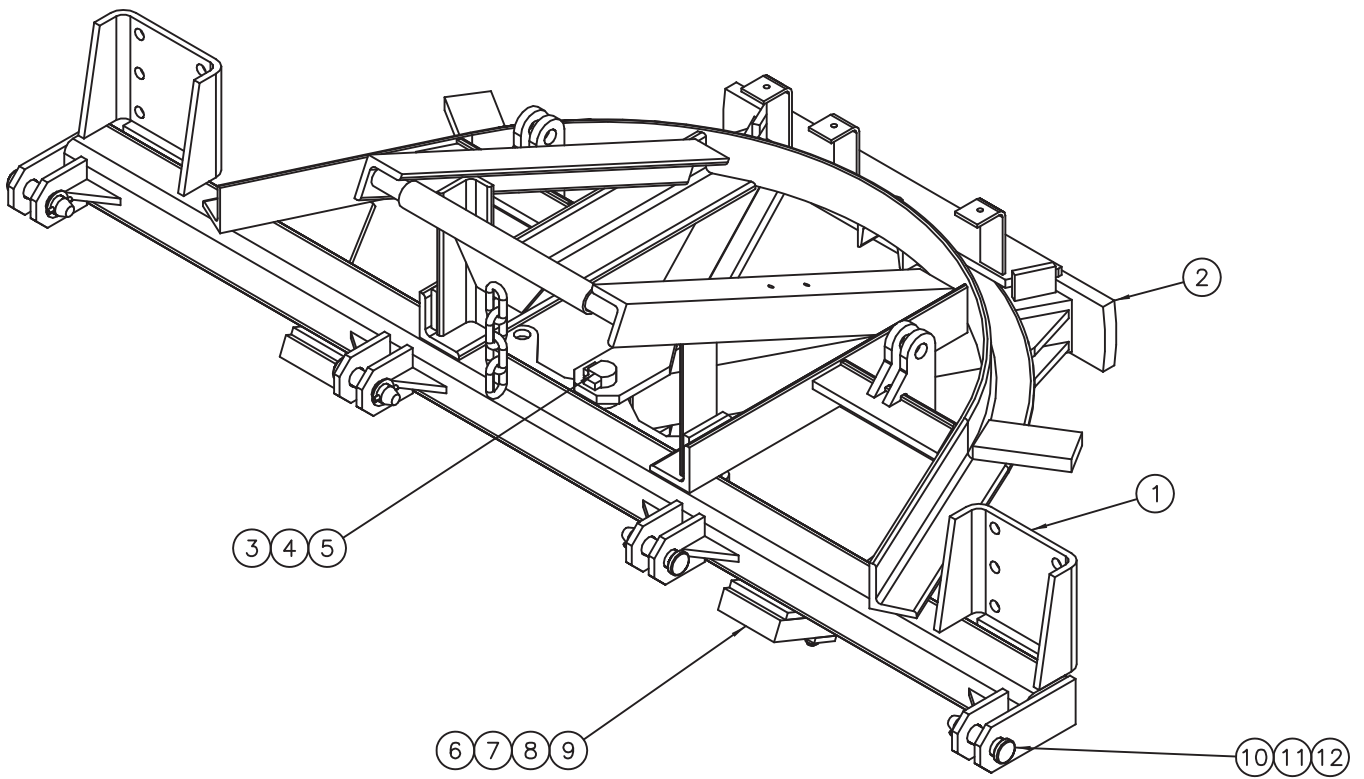
Item	Qty.	Part Number	Description
1	4	05035075	SPRING EXTENSION, 18" L X 4.25" OD
2	4	05016099	EYEBOLT, 1-8 X 9.25 W/6.5 THREAD
3	4	05020273	NUT, 1-8, G8, HEX, ZINC



00050476 PUSHFRAME KIT, REVERSING, 48 CT, 9'-12', LEVEL LIFT			
Item	Qty.	Part Number	Description
1	1	00094809	PUSHFRAME WELDMENT, REVERSING, 10'-12' 1A. 01110626 PICK PLATE WELDMENT (QTY 1) 2A. 00029497 BAR (QTY 1) 3A. 00094823 MOUNT PAD (QTY 2)
2	1	00027881	A-FRAME WELDMENT STANDARD, 1.25 PIVOT
3	1	05022047	PIN, 1.25 X 7.25, FLAT HEAD
4	1	05022044	PIN, .3125 X 3" ROLL
5	1	05021316	WASHER, 1.25" FLAT, ZINC
6	2	05051480	BUMPER, 1.5" X 5" X 6", RUBBER
7	2	00020722	BUMPER, RETAINER
8	4	05010697	BOLT, .5" X 13" X 3" G8, HHCS, ZINC
9	4	05020847	NUT, .5" -13", GC, TOP LOCK,C&W
10	4	05022067	PIN, 1.25 DIA X 4.5 FLAT HEAD
11	4	05022039	PIN, .3125 X 2" ROLL
12	4	05021191	BUSHING, 1.25", MACHINE, ZINC

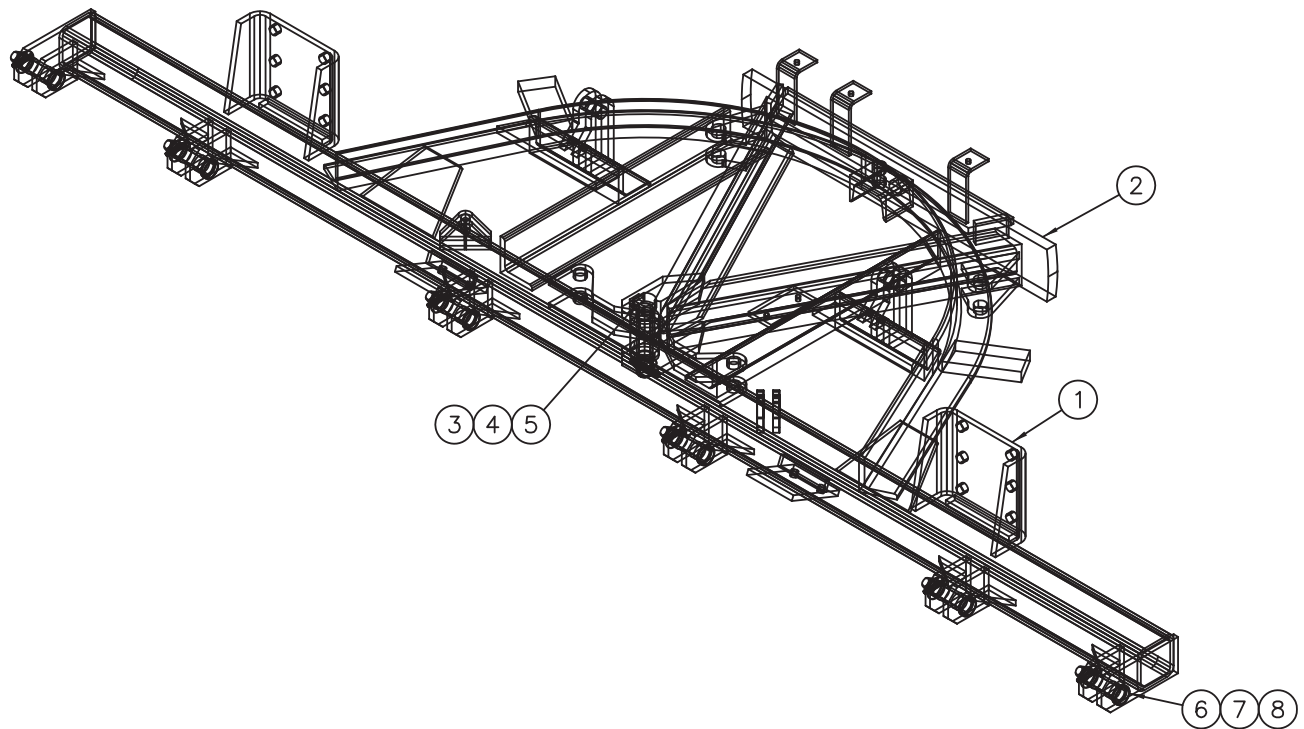


00157303 PUSHFRAME KIT, RVVS, 48CT, 12'			
ITEM	QTY	PART NUMBER	DESCRIPTION
1	1	00157304	PUSHFRAME WLDMT,RVS,48CT,12',
2	1	00027881	A-FRAME WLDMT,STD,1.25 PIVOT,
3	1	05022047	PIN 1.25 x 6.438 FLAT HD ZC
4	1	05022044	PIN .313 x 3.000 ROLL
5	1	05021316	WASHER 1.25 FLAT ZC
6	2	05051480	BUMPER,PLOW,1.5x5.0x6.0
7	2	00020722	BUMPER RETAINER
8	4	05010697	BOLT .500-13 x 3.00 G8 HHCS ZC
9	4	05020847	NUT .500-13 GC TOPLOCK C&W
10	6	05022067	PIN 1.242 x 3.370GL x 4.835,ZC
11	6	05022039	PIN, ROLL .313 x 2.000 OA
12	6	05021191	BUSHING,MACH,1.88x1.25x14GA,ZC



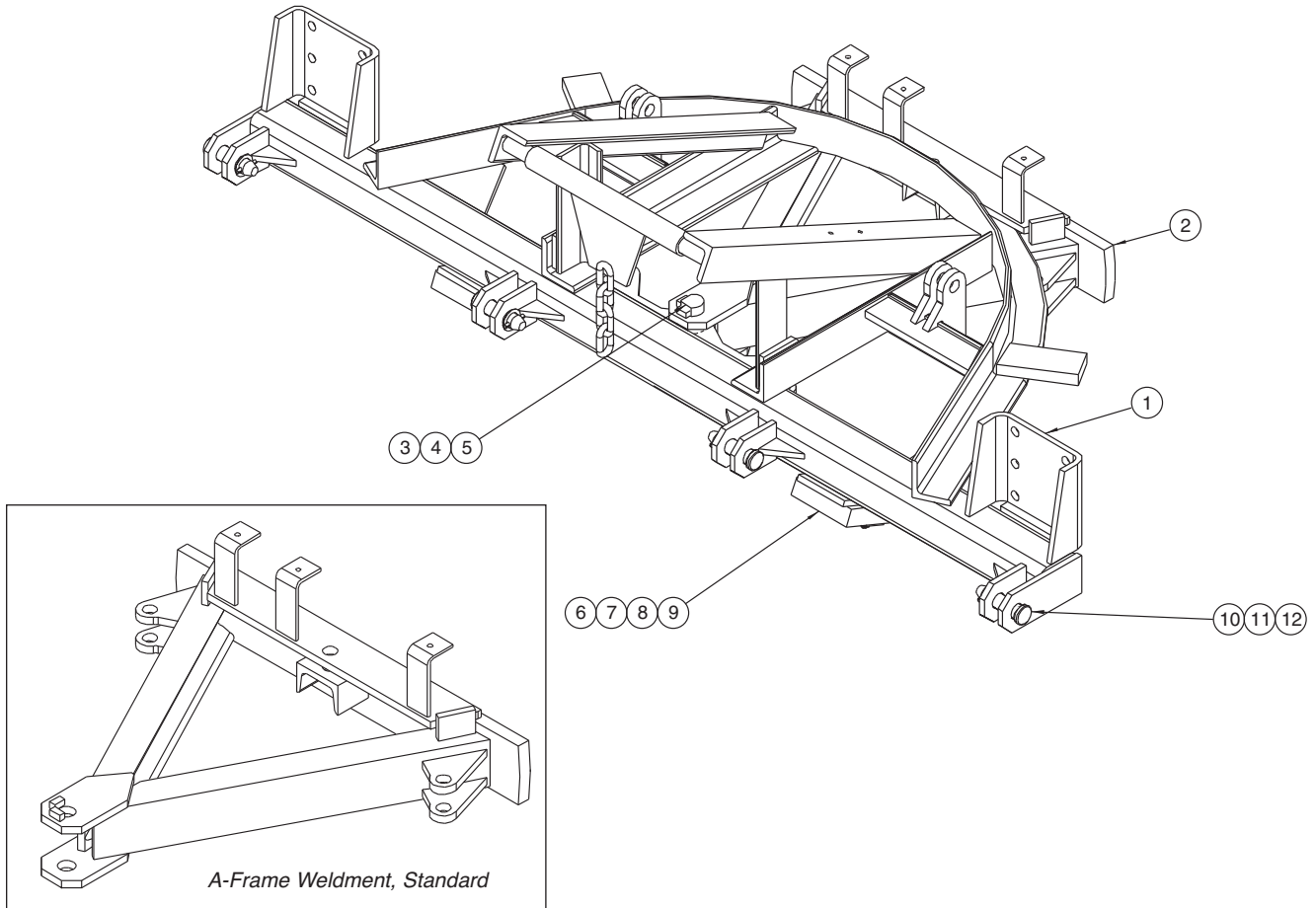
00092344 PUSHFRAME KIT, RVS, 36 & 41 CT
00096020 PUSHFRAME, RVS, 36 & 41 CT

Item	Qty.	Part Number	Description
1	1	00092345 00096021	PUSHFRAME WELDMENT, RVS, CT, 9'-12' PUSHFRAME WELDMENT, RVS, CT, 9'-12'
2	1	00027881	A-FRAME WELDMENT, STD, 1.25 PIVOT
3	1	05022047	PIN, 1.25 X 7.25 FLAT, HD
4	1	05022044	PIN, .313 X 3, ROLL
5	1	05021316	WASHER, 1.25 FLAT, ZINC
6	2	05051480	BUMPER, PLOW, 1.50 X 5 X 6
7	2	00020722	BUMPER RETAINER
8	4	05010697	BOLT, .5-13 X 3, G8, HHCS, ZINC
9	4	05020847	NUT, .5-13, GC, TOP LOCK, C&W
10	4	05022067	PIN, 1.25 DIA X 4.5 FLAT HD
11	4	05022039	PIN, .313 X 2 ROLL
12	4	05021191	BUSHING, 1.25 MACHINE ZINC



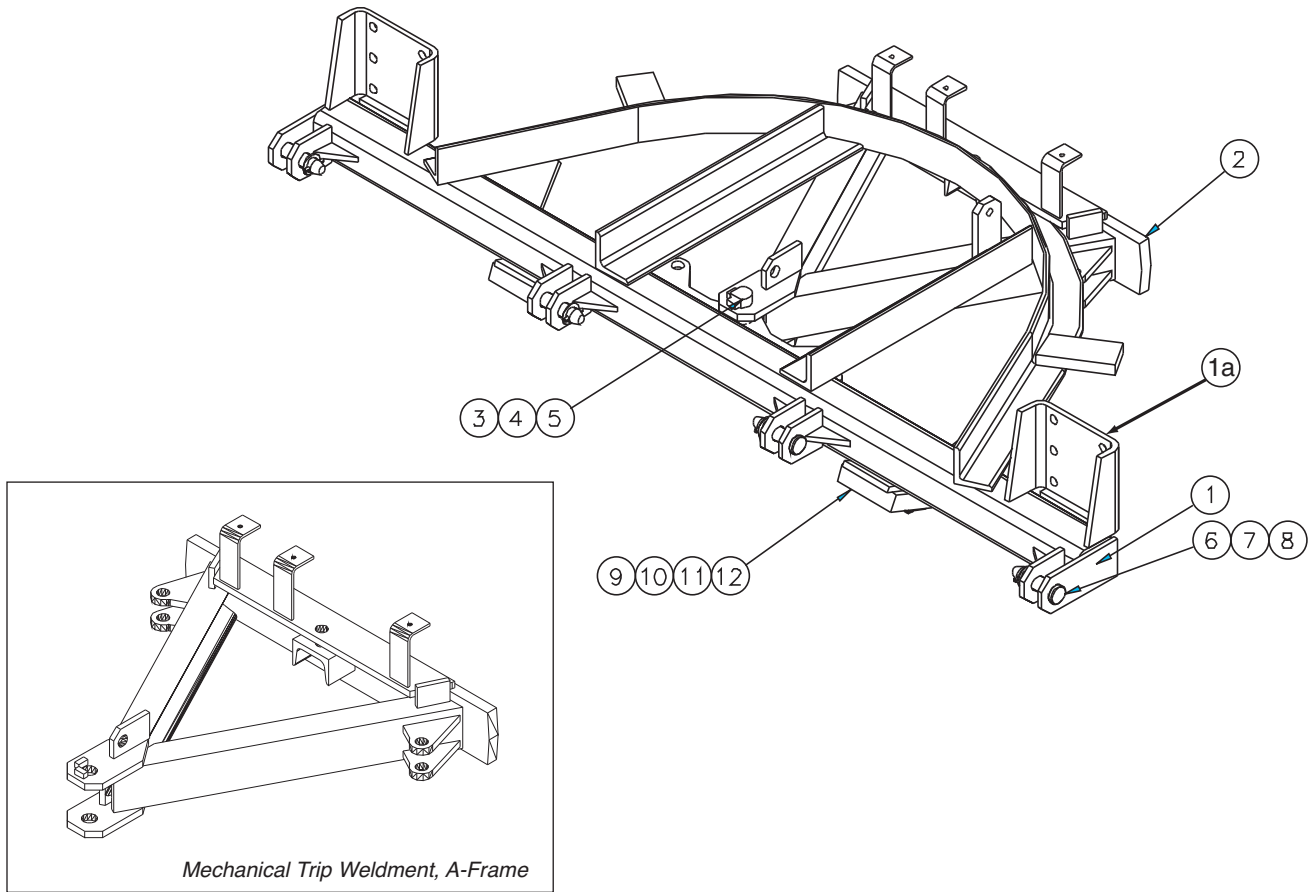
00058957 PUSHFRAME KIT, RVS, CT, 10'

Item	Qty.	Part Number	Description
1	1	00012116	PUSHFRAME WELDMENT, RVS, CT, 10', 6 ATCH PTS
2	1	00027881	A-FRAME WELDMENT
3	1	05022047	PIN, 1.25 X 6.438 FLAT HD ZINC CHAMFERED HD W HOLE
4	1	05022044	PIN, .313 X 3 ROLL ZINC CARBON SPRING STEEL
5	1	05021316	WASHER 1.25 FLAT ZINC
6	6	05022067	PIN 1.242 4.835 FLAT HD ZINC GRIP 3.370
7	6	05022039	PIN .313 X 2 ROLL ZINC CARBON SPRING STEEL
8	6	05021191	PIN .313 X 2 ROLL ZINC CARBON SPRING STEEL



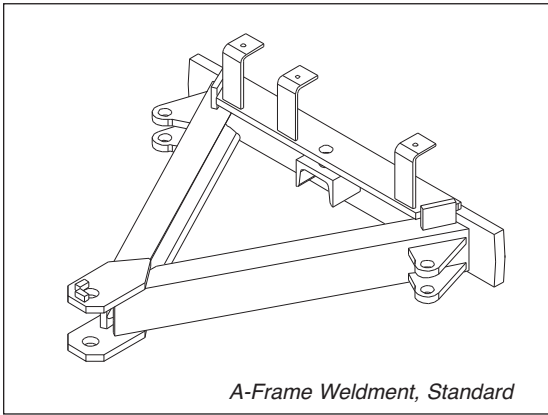
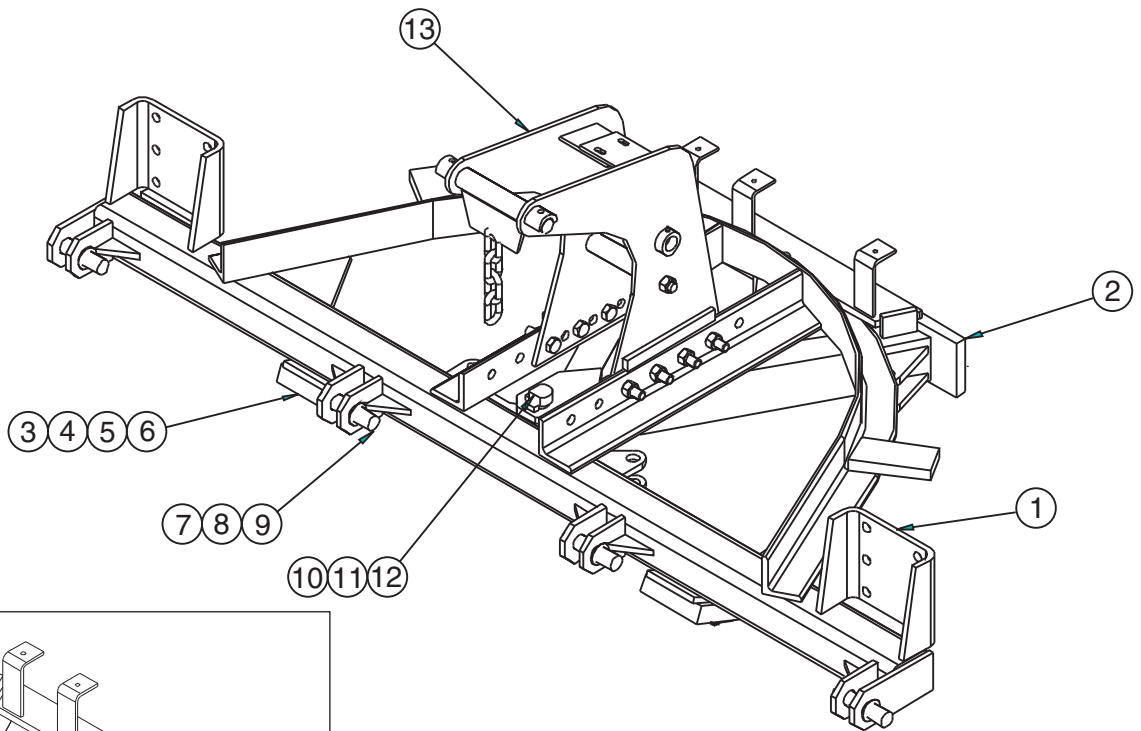
00029429 PUSHFRAME KIT, REVERSING, 10'-12', NO LEVEL LIFT

Item	Qty.	Part Number	Description
1	1	00055949	PUSHFRAME WELDMENT, REVERSING, 10'-12', 4 ATCH 1A. 00094823 MOUNT PAD (QTY 2)
2	1	00027881	A-FRAME WELDMENT, STANDARD, 1.25 PIVOT
3	1	05022047	PIN, 1.25 X 7.25, FLAT HEAD
4	1	05022044	PIN, .3125 X 3, ROLL
5	1	05021316	WASHER, 1.25, FLAT, ZINC
6	4	05022067	PIN, 1.25 DIA X 4.5, FLAT HEAD
7	4	05022039	PIN, .3125 X 2 ROLL
8	4	05021191	BUSHING, 1.88 X 1.25 X 14GA, ZINC



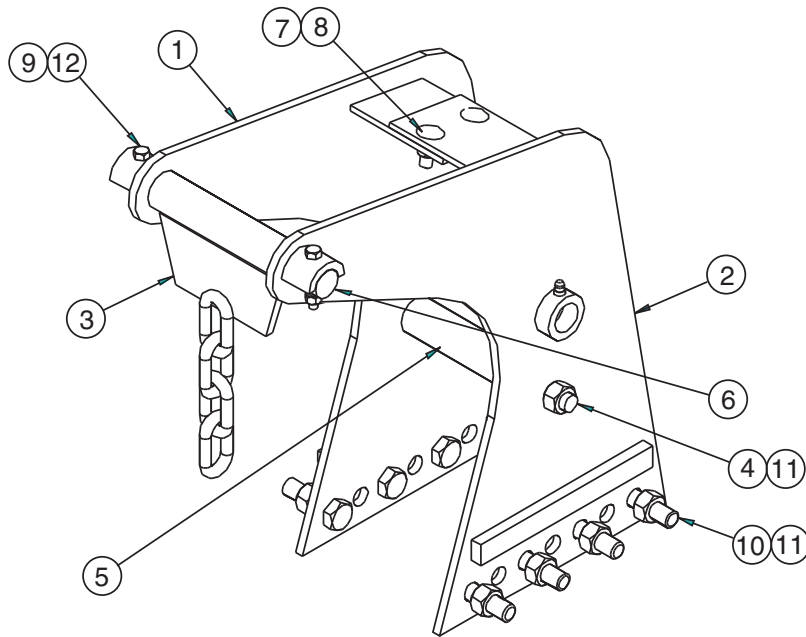
00058138 PUSHFRAME KIT, 10'-12', REVERSING, MECHANICAL TRIP

Item	Qty.	Part Number	Description
1	1	00027838	REVERSING MECHANICAL TRIP WELDMENT 1A 00094823 MOUNT PAD (QTY 2)
2	1	00027849	MECHANICAL TRIP WELDMENT A-FRAME
3	1	05022044	PIN, .3125 X 3, ROLL
4	1	05022047	PIN, 1.25 X 7.25, FLAT, HEAD
5	1	05021316	WASHER, 1.25, FLAT, ZINC
6	4	05022067	PIN, 1.25 DIA X 4.5 OA, FLAT HEAD
7	4	05022039	PIN, .3125 X 2, ROLL
8	4	05021191	BUSHING, 1.88 X 1.25 X 14GA, ZINC
9	2	05051480	BUMPER, PLOW, 1.5 X 5 X 6, RUBBER
10	2	00020722	BUMPER, RETAINER PUSHFRAME
11	4	05010697	BOLT, .5-13 X 3, G8, HHCS, ZINC
12	4	05020847	NUT, .5-13, GC, TOP LOCK, C&W



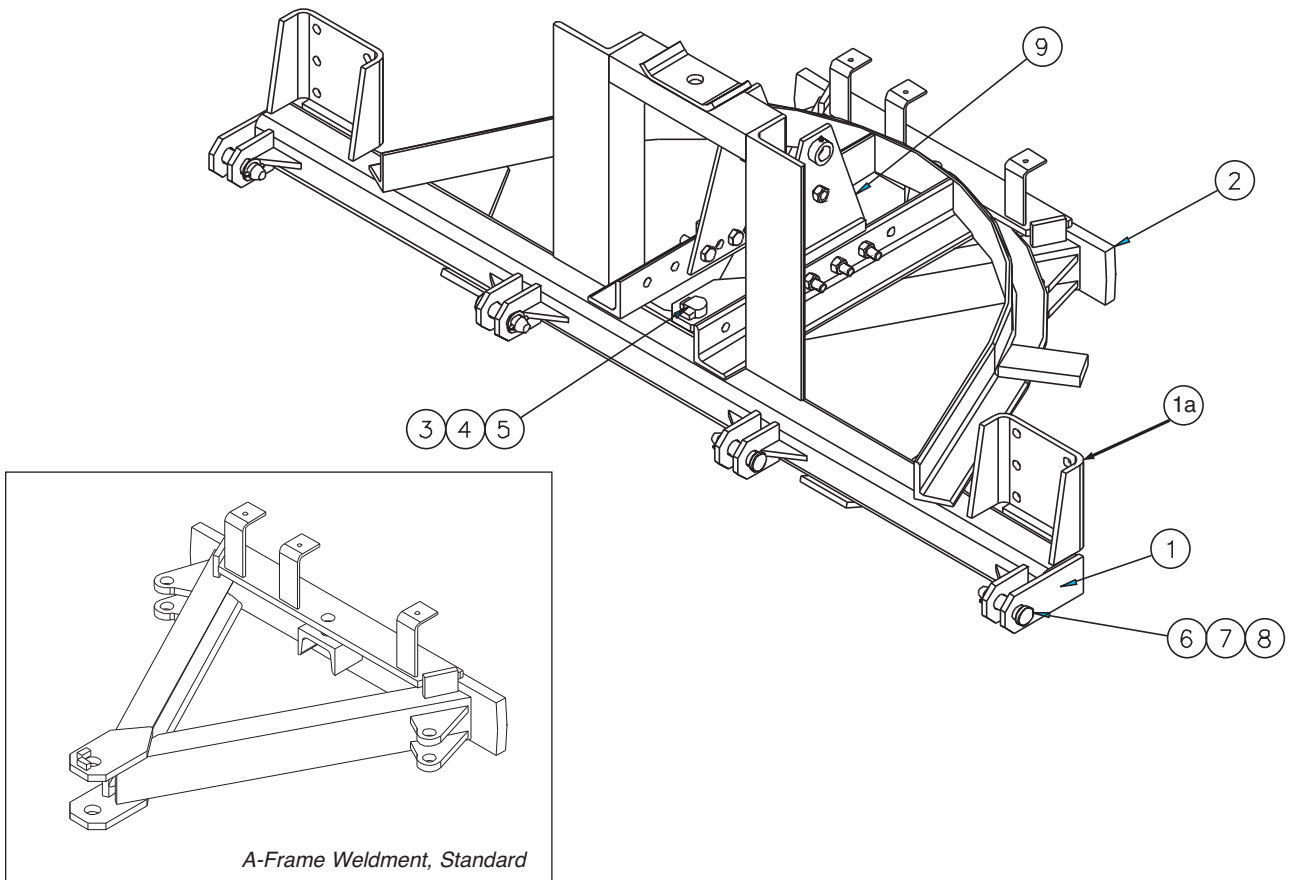
00050924 PUSHFRAME KIT, 10'-12', BULLET TRIP W/O CANISTER

Item	Qty.	Part Number	Description
1	1	00027834	PUSHFRAME WELDMENT, 10'-12'
2	1	00027881	STANDARD A-FRAME WELDMENT
3	2	00020722	BUMPER RETAINER
4	2	05051480	BUMPER PLOW, 1.5 X 5 X 6, RUBBER
5	4	05010697	BOLT, .5-13 X 3, G8, HHCS, ZINC
6	4	05020847	NUT, .5-13, GC, TOP LOCK, C&W
7	4	05022067	PIN, 1.25 DIA X 4.5 OAL, FLAT HEAD
8	4	05021191	BUSHING, .875 X 1.25 X 14GA, ZINC
9	4	05022039	PIN, .3125 X 2 OAL, ROLL
10	1	05022047	PIN, 1.25 X 7.25, FLAT HEAD
11	1	05022044	PIN, .3125 X 3 ROLL
12	1	05021316	WASHER, 1.25, FLAT, ZINC
13	1	00040538	BULLET TRIP KIT, LEVEL LIFT <i>See Page 29</i>



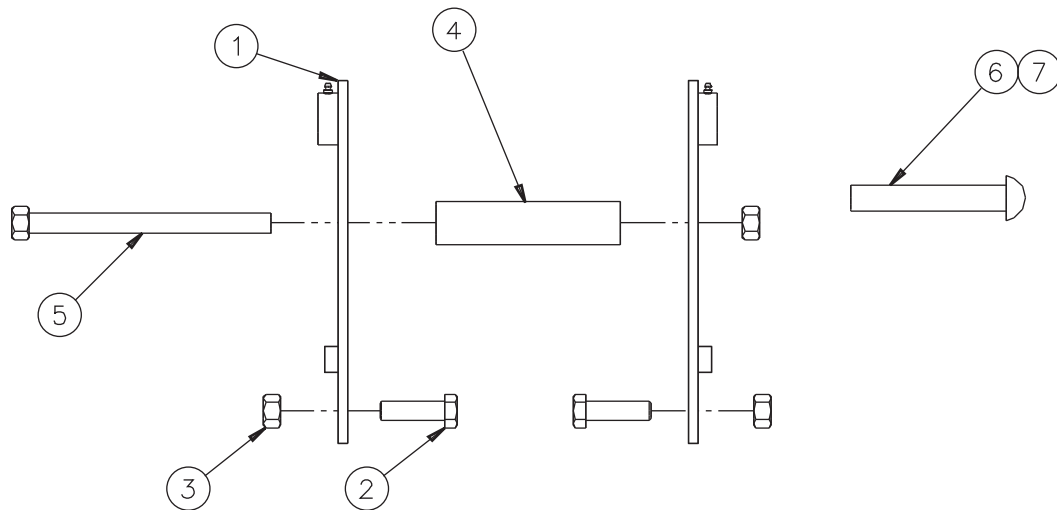
00040538 BULLET TRIP KIT, LEVEL LIFT

Item	Qty.	Part Number	Description
1	1	00040522	MOUNTING BRACKET ASSEMBLY, RH
2	1	00040523	MOUNTING BRACKET ASSEMBLY, LH
3	1	00040525	CHAIN BRACKET ASSEMBLY
4	1	00040526	THREADED ROD ASSEMBLY
5	1	00040537	PIPE, .75 SCHED 40 X 7.25
6	1	00040534	PIN
7	2	05014042	BOLT, .5-13 X 1.5, CARRIAGE, ZINC
8	2	05020821	NUT, .5-13, SPINLOCK,G5, ZINC
9	2	05010649	BOLT, .375-16 X 2.5, G8, HHCS,ZINC
10	8	05010766	BOLT, .75-10 X 2.5, G8, HHCS, ZINC
11	9	05020849	NUT, .75-10, GC, TOP LOC, C&W
12	2	05020898	NUT, .375-16, GC, TOP LOCK,C&W
13	1	05022165	PIN, 1 X 8.125, ZINC
14	1	05022019	PIN, .188 X 2, COTTER
15	1	05050288	GREASE ZERK, .25-28, STRAIGHT THREADED



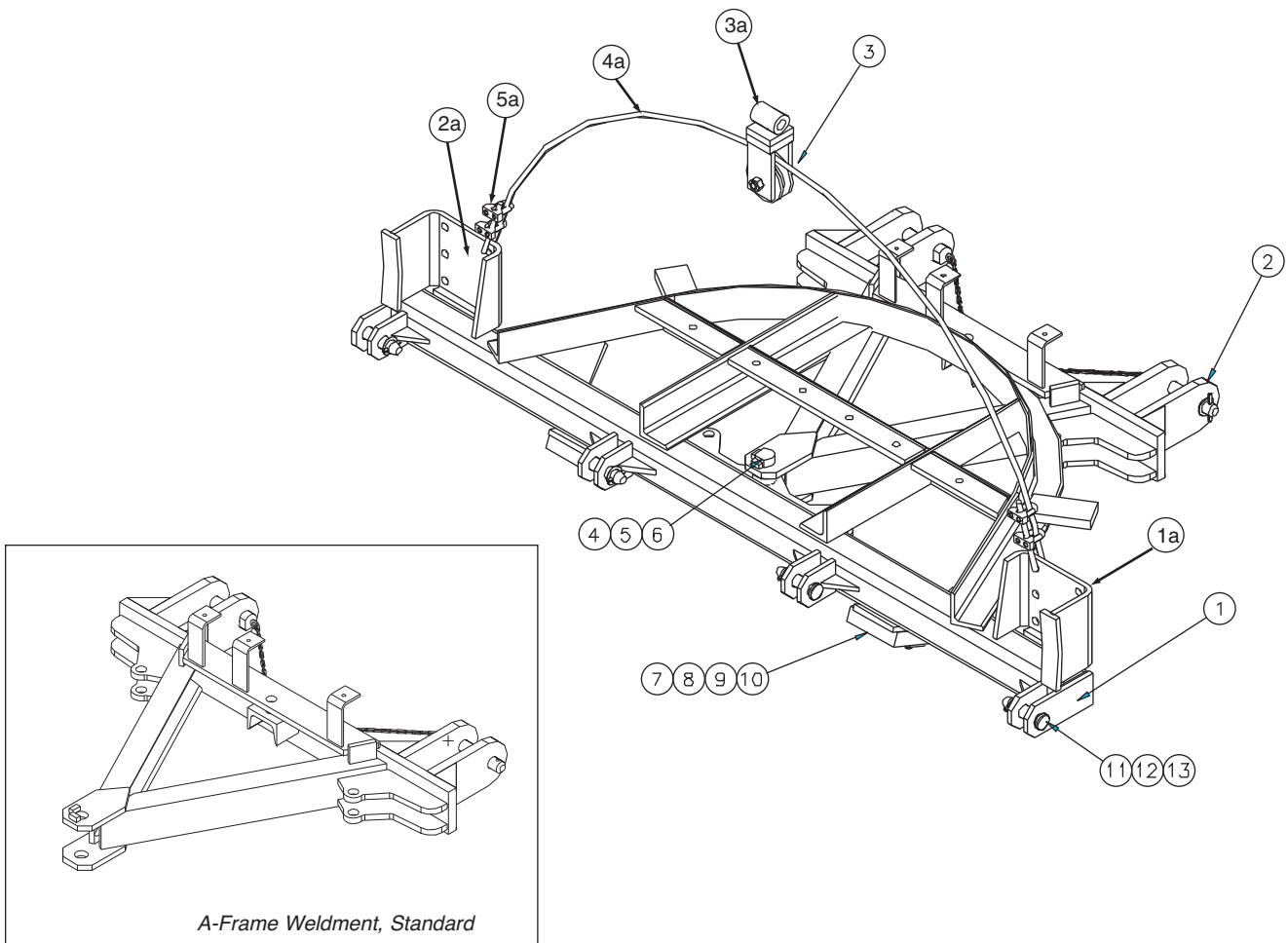
0005998 PUSHFRAME KIT, 10'-12', BULLET TRIP, HUSTING HITCH

Item	Qty.	Part Number	Description
1	1	0005999	PUSHFRAME WELDMENT, 10'-12'
2	1	00027881	A-FRAME WELDMENT
3	1	05022047	PIN, 1.25 X 7.25, FLAT HEAD
4	1	05022044	PIN, .3125 X 3, ROLL
5	1	05021316	WASHER, 1.25, FLAT ZINC
6	4	05022067	PIN, 1.25 DIA X 4.5, FLAT HEAD
7	4	05022039	PIN, .3125 X 2 ROLL
8	4	05021191	BUSHING, 1.88 X 1.25 X 14GA, ZINC
9	1	00050925	BRACKET KIT, BULLET TRIP <i>See Page 31</i>



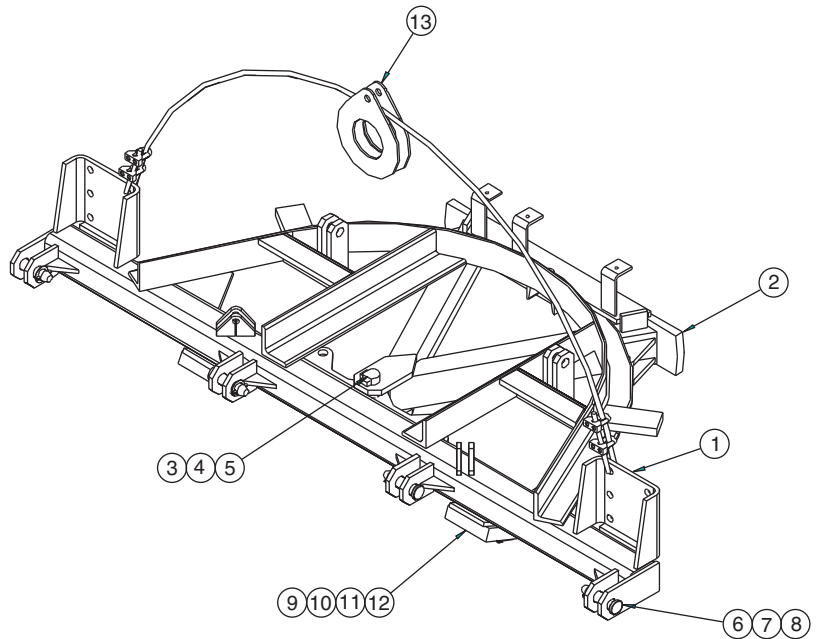
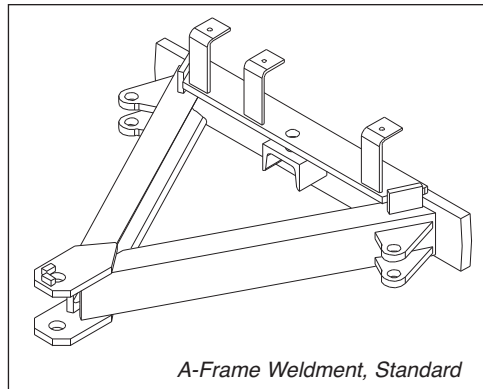
00050925 BRACKET KIT, BULLET TRIP, BRACKETS AND HARDWARE

Item	Qty.	Part Number	Description
1	2	00040524	MOUNTING BRACKET WELDMENT
2	8	05010766	BOLT, .75-10 X 2.5, G8, HHCS, ZINC
3	9	05020849	NUT, .75-10, GC, TOP LOC,C&W
4	1	00040535	PIPE, 1.25 SCHED 80 X 7.125
5	1	00040526	THREADED ROD ASSEMBLY
6	1	05022076	PIN, 1X6, BUTTON HEAD, ZINC LIFT ARM
7	1	05022019	PIN, .1875 X 2 COTTER



00059559 PUSHFRAME KIT, 10'-12', EXTENSION, CABLE LIFT

Item	Qty.	Part Number	Description
1	1	00045720	PUSHFRAME WELDMENT, EXTENSION, 10'-12' 1A 00045726 MOUNT PAD, LH (QTY 1) 2A 00045725 MOUNT PAD, RH (QTY 1)
2	1	00059553	A-FRAME WELDMENT, 1X5X45
3	1	00059557	CABLE LIFT KIT 3A 00012796 LIFT PULLEY WELDMENT, CABLE 4A 00050483 CABLE, .5 DIA X 12', FIBER CORE 5A 05051000 CLAMP, CABLE, .5, FORGED STEEL 6A 05050097 THINBLE, CABLE, .5 7A 05050126 SHACKLE, .625 SCREW PIN
4	1	05022047	PIN, 1.25 X 7.25, FLAT HEAD
5	3	05022044	PIN, .3125 X 3 ROLL
6	3	05021316	WASHER, 1.25, FLAT, ZINC
7	2	05051480	BUMPER, PLOW, 1.5 X 5 X 6, RUBBER
8	2	00020722	BUMPER, RETAINER PUSHFRAME
9	4	05010697	BOLT, .5-13 X 3, G8, HHCS, ZINC
10	4	05020914	NUT, .5-13, G8, NYLON LOCK, ZINC
11	4	05022067	PIN, 1.25 DIA X 4.5, FLAT, HEAD
12	4	05022039	PIN, .3125 X 2 ROLL
13	4	05021191	BUSHING, 1.88 X 1.25 X 14GA, ZINC

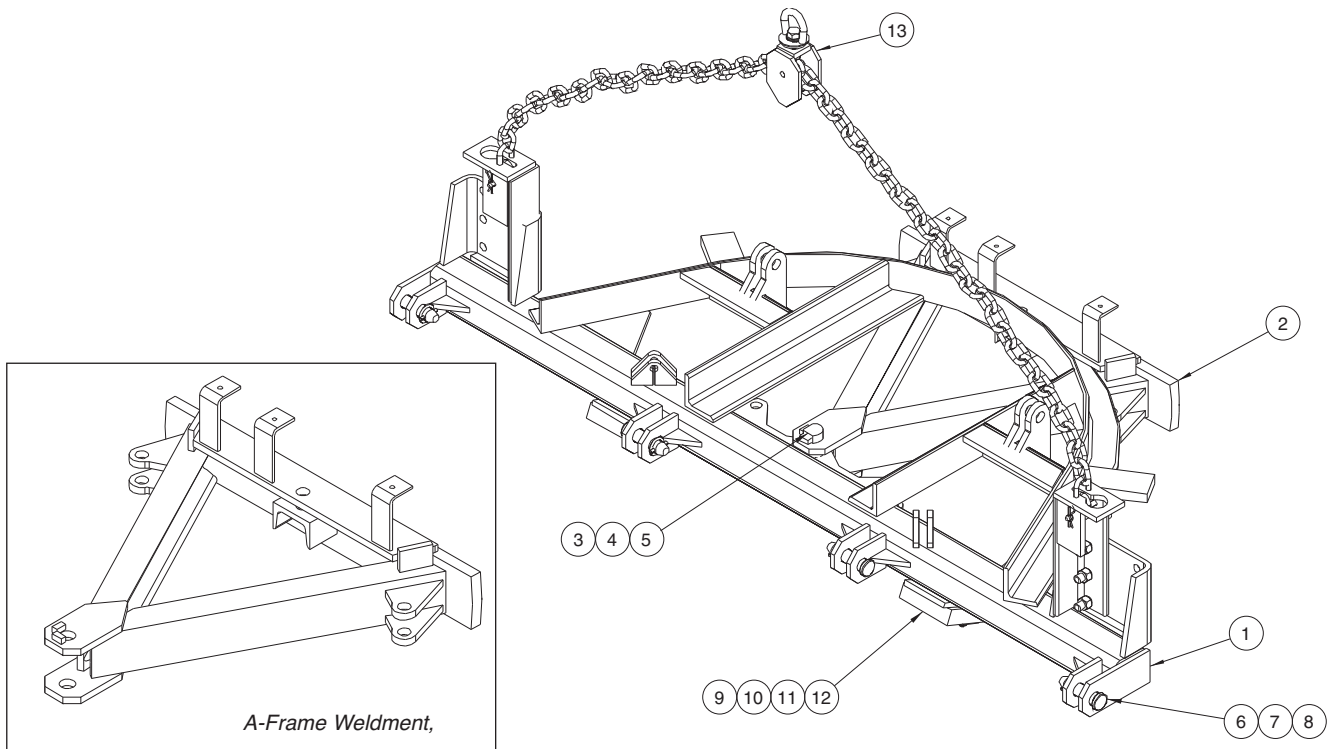


00055942 PUSHFRAME KIT, 10'-12', CABLE LIFT

Item	Qty.	Part Number	Description
1	1	00055949	PUSHFRAME WELDMENT, REV, 10'-12'
2	1	00027881	A-FRAME WELDMENT, STD, 1.25 PIVOT
3	1	05022047	PIN, 1.25 X 7.25, FLAT HEAD
4	1	05022044	PIN, .3125 X 3 ROLL
5	1	05021316	WASHER, 1.25, FLAT, ZINC
6	4	0502067	PIN, 1.25 DIA X 4.5 OAL, FLAT HEAD
7	4	05022039	PIN, .3125 X 2 ROLL
8	4	05021191	BUSHING, 1.875 X 1.25 X 10GA, ZINC
9	2	05051480	BUMPER, 1.5 X 5 X 6, RUBBER
10	2	00020722	BUMPER, RETAINER PUSHFRAME
11	4	05010697	BOLT, .5-13 X 3, G8, HHCS, ZINC
12	4	05020847	NUT, .5 -13, GC, TOP LOCK, C&W
13	1	00038926	CABLE LIFT KIT, .5 X 12', CABLE <i>See Next Page</i>

00038926 CABLE LIFT KIT, .5" X 12'

Item	Qty.	Part Number	Description
1	1	00038922	SHEAVE WELDMENT, DEAD, CABLE LIFT
2	1	00050483	CABLE, .5" DIA X 12', FIBER CORE
3	4	05051000	CLAMP, CABLE, .5" MALEABLE IRON
4	2	05050097	THIMBLE, CABLE, FOR .5" CABLE
5	2	05050126	SHACKLE, .625 SCREW PIN, GALV
6	4	05051000	CLAMP, CABLE, .5" FORGED STEEL
7	2	05050097	THIMBLE CABLE, .5"
8	2	05010741	BOLT, .625-11 X 2.5" G8, HHCS, ZINC
9	2	05020837	NUT, .625-11, GC, TOP LOCK, C&W

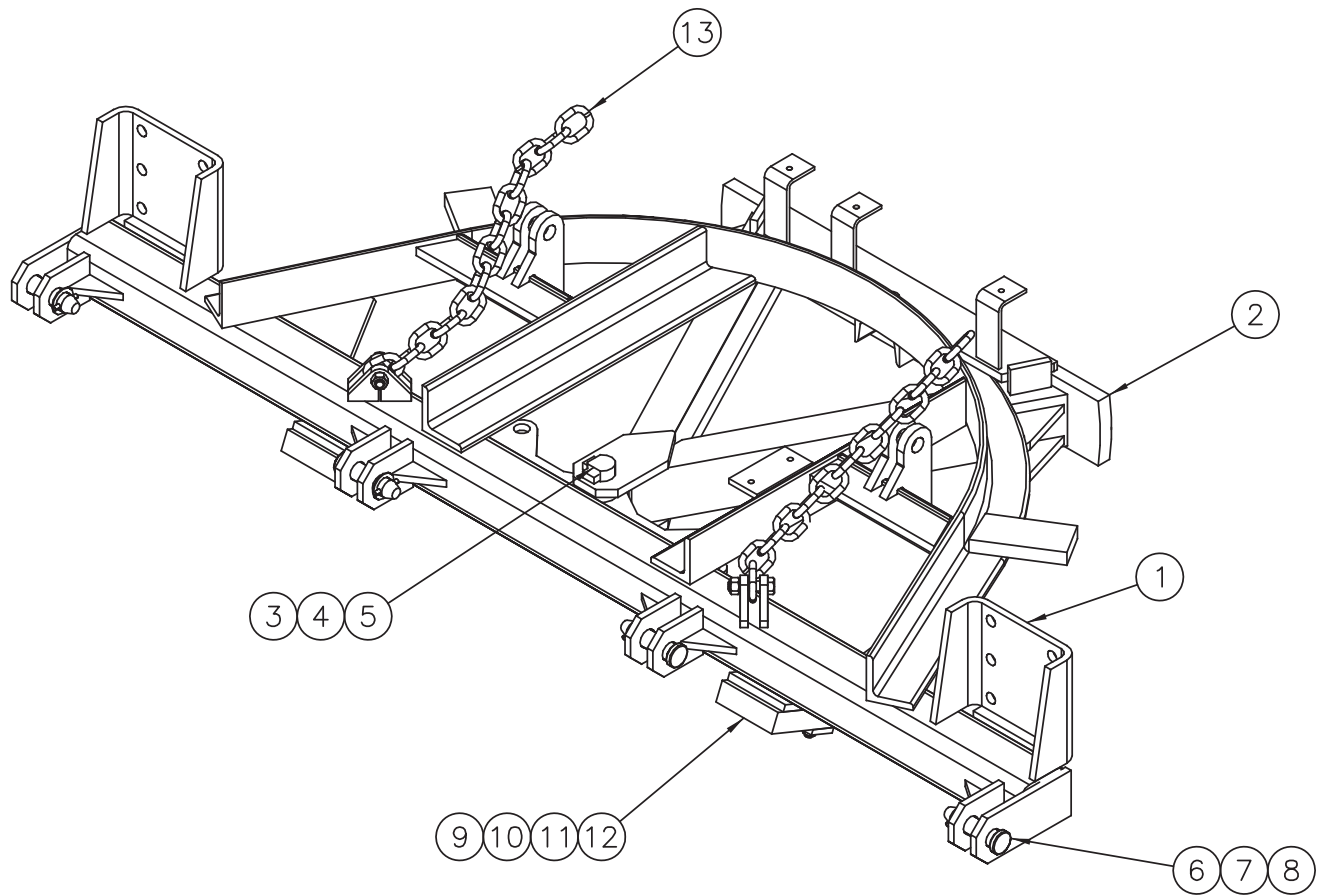


**00055941 PUSHFRAME KIT, REVERSING, CT, 10'-12', 4 ATCH POINTS,
1 CHAIN LIFT**

Item	Qty.	Part Number	Description
1	1	00055949	PUSHFRAME WELDMENT, REV, 10'-12'
2	1	00027881	A-FRAME WELDMENT, STD, 1.25 PIVOT
3	1	05022047	PIN, 1.25 X 7.25, FLAT HEAD
4	1	05022044	PIN, .3125 X 3 ROLL
5	1	05021316	WASHER, 1.25, FLAT, ZINC
6	4	0502067	PIN, 1.25 DIA X 4.5 OAL, FLAT HEAD
7	4	05022039	PIN, .3125 X 2 ROLL
8	4	05021191	BUSHING, 1.875 X 1.25 X 10GA, ZINC
9	2	05051480	BUMPER, 1.5 X 5 X 6, RUBBER
10	2	00020722	BUMPER, RETAINER PUSHFRAME
11	4	05010697	BOLT, .5-13 X 3, G8, HHCS, ZINC
12	4	05020847	NUT, .5 -13, GC, TOP LOCK, C&W
13	1	00031154	CHAIN LIFT KIT, SWIVEL LOOP <i>See Next Page</i>

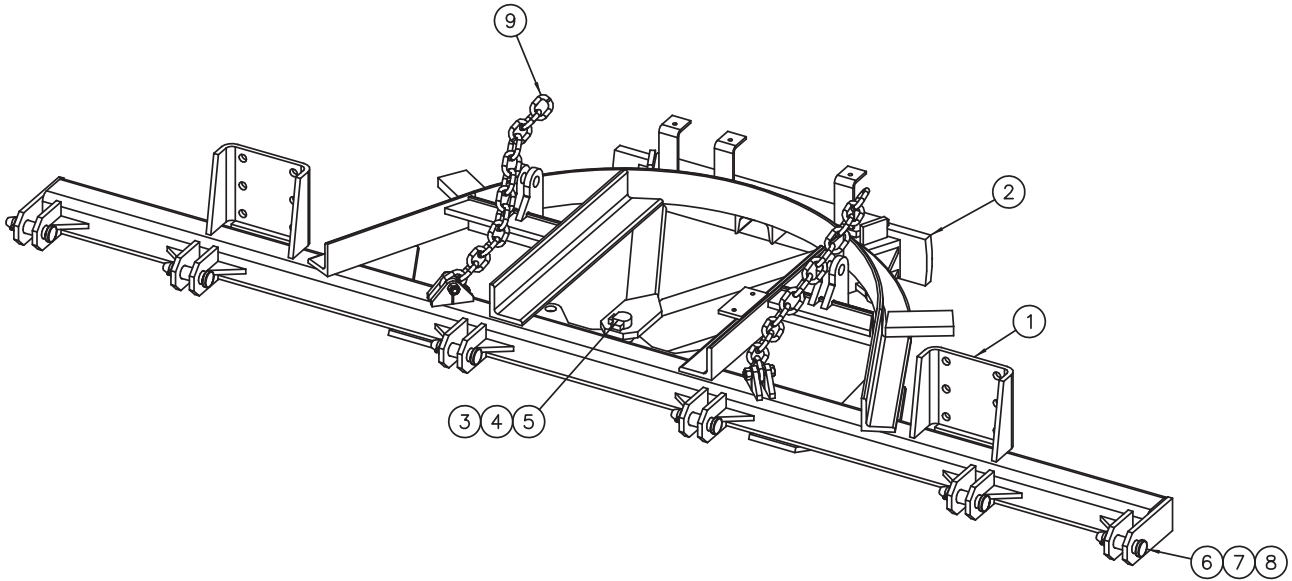
00031154 LIFT KIT, 1 CHAIN, SWIVEL LOOP

Item	Qty.	Part Number	Description
1	1	00043173	SWIVEL LOOP CHAIN
2	1	00036995	BRACKET WELDMENT, LH, CHAIN ATTACH
3	1	00036996	BRACKET WELDMENT, RH CHAIN ATTACH
4	1	00043175	CHAIN, .5 X 120
5	3	05022136	PIN, .5 X 4.5, 4" GRIP BENT
6	6	05010765	BOLT, .75-10 X 2.25, G8, HHCS, ZINC
7	6	05020271	NUT, .75-10, G8, HEX, ZINC
8	1	05022040	PIN, 1 X 4.25 NO HEAD
9	2	05021202	BUSHING, 1.5 X 1 X 10GA, ZINC
10	1	05022002	PIN, #8, HAIR
11	1	05022026	PIN, .25 X 20, ROLL, ZINC



00055940 PUSHFRAME KIT, RS, CT, 10'-12'

Item	Qty.	Part Number	Description
1	1	00055949	PUSHFRAME WELDMENT, REV, CT, 10'-12'
2	1	00027881	STD A-FRAME WELDMENT
3	1	05022047	PIN 1.25 X 7.25 FLAT HEAD
4	1	05022044	PIN, .313 X 3 ROLL
5	1	05021316	WASHER, 1.25 FLAT ZINC
6	4	05022067	PIN, 1.25 DIA X 4.50 FLAT HEAD
7	4	05022039	PIN, .313 X 2 ROLL
8	4	05021191	BUSHING, 1.88 X 1.25 X 14GA, ZINC
9	2	05051480	BUMPER, PLOW, 1.5 X 5 X 6, RUBBER
10	2	00020722	BUMPER, RETAINER PUSHFRAME
11	4	05010697	BOLT, .5-13 X 3, G8, HHCS, ZINC
12	4	05020847	NUT, .5-13, GC, TOP LOCK, C&W
13	1	00055943	TWO CHAIN LIFT KIT, NON LEVEL

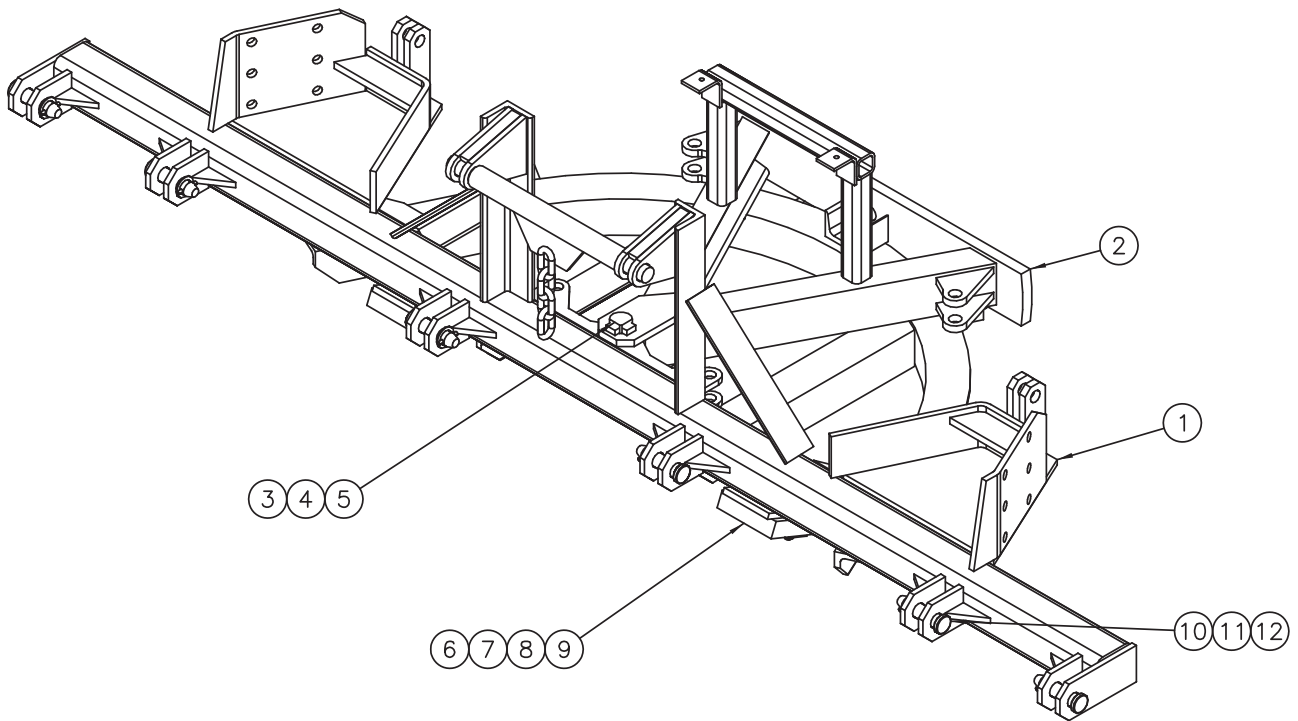


00075643 PUSHFRAME KIT, RVS, CT, 10'

Item	Qty.	Part Number	Description
1	1	00012116	PUSHFRAME WELDMENT, REV, CT, 10', 6 ATCH
2	1	00027881	A-FRAME WELDMENT, STD, 1.25 PIVOT
3	1	05022047	PIN, 1.25 X 7.25 FLAT HEAD
4	1	05022044	PIN, .313 X 3 ROLL
5	1	05011316	WASHER, 1.25 FLAT ZINC
6	6	05022067	PIN, 1.25 DIA X 4.50, FLAT HD
7	6	05022039	PIN, .313 X 2 ROLL
8	6	05021191	BUSHING, 1.875 X 1.25 14GA ZINC
9	1	00055943	LIFT KIT, PLOW, 2 CHAIN SEE BELOW

00055943 LIFT KIT, 2 CHAIN

Item	Qty.	Part Number	Description
1	2	00027691	CHAIN .5 X 60 PROOF COIL
2	2	05010741	BOLT, .625-11 X 2.50 G8, HHCS
3	2	05020837	NUT, .625-11 GC TOPLOCK C&W

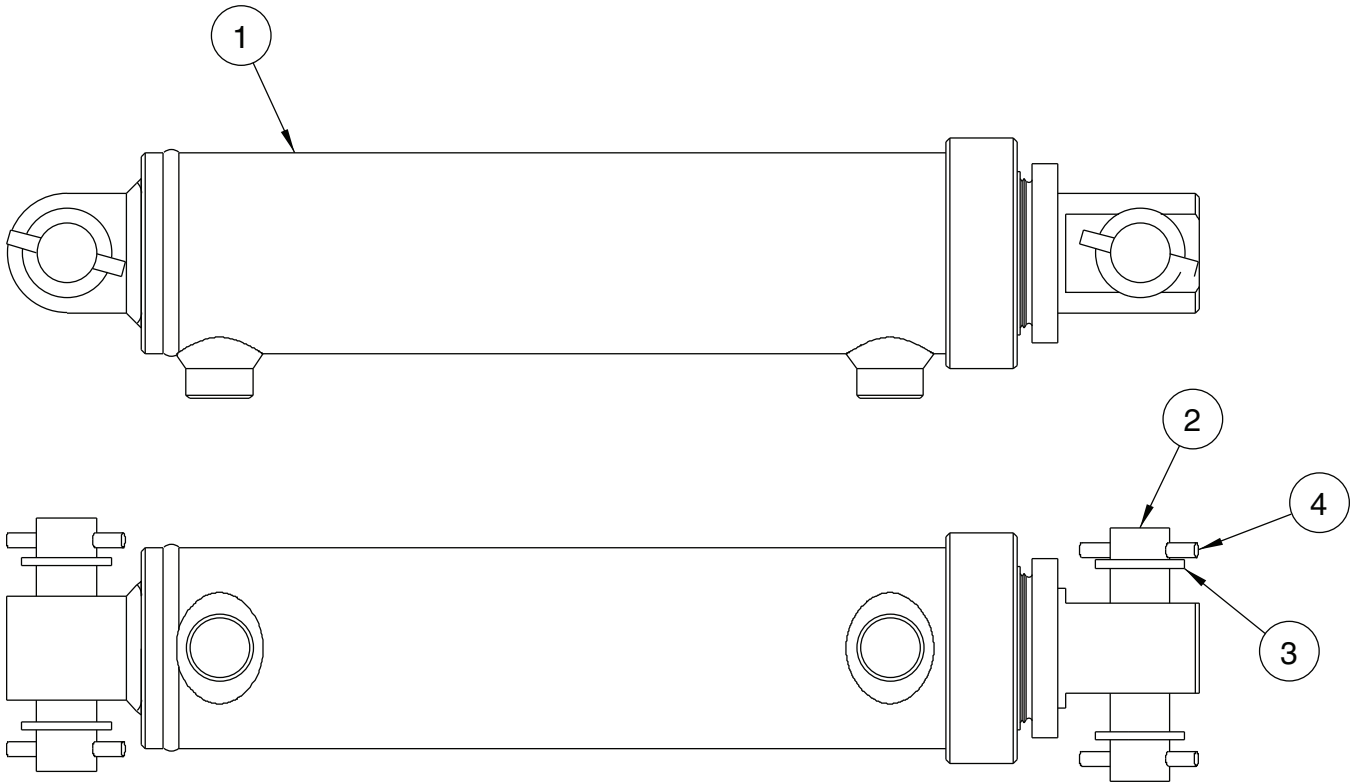


00130052 PUSHFRAME KIT, TOP MTD CYLINDER

ITEM	QTY	PART NUMBER	DESCRIPTION
1	1	00130053	PUSHFRAME WLDMT,RVS,CT,9'-12',6 ATCH, TOP MTD CYL, 17 MTG HGT
2	1	00031010	A-FRAME WLDMT,STD, TOP MTD CYL, A-FRAME, REVERSIBLE
3	1	05022047	PIN 1.25 x 6.438 FLAT HD, ZC, CHAMFERED HD, W/HOLE
4	1	05022044	PIN .313 x 3.000 ROLL ZC, CARBON SPRING STEEL
5	1	05021316	WASHER 1.25 FLAT ZC
6	2	05051480	BUMPER, 1.5x5x6 RUBBER, W/(2), .625"HOLES&3-PLY 200# FB, PLOW
7	2	00020722	RETAINER, BUMPER, PUSHFRAME
8	4	05010697	BOLT .500-13 x 3.00 G8 HHCS ZC
9	4	05020847	NUT .500-13 GC TOPLOCK C&W
10	6	05022067	PIN 1.242 4.835 FLAT HD ZC, GRIP 3.370
11	6	05022039	PIN .313 x 2.000 ROLL ZC, CARBON SPRING STEEL
12	6	05021191	BUSHING, MACH, 1.88x1.25x14GA, ZC, NARROW RIM

00107581 REVERSING KIT, PLOW, 4X10 CYL

ITEM	QTY	PART NUMBER	DESCRIPTION
1	2	05002953	CYLINDER,4x10 DA,NITRIDED ROD,
2	4	05022040	PIN 1.000 x 4.250 NO HEAD
3	8	05021202	BUSHING 1.50 x 1.00 x 10GA ZC
4	8	05022026	PIN .250 x 2.000 OA,ROLL
5	1	05044230	HOSE KIT,CUSHION BLOCK@1000PSI
6	1	05037080	HOSE KIT,PLOW,STD W/36" WHIP
7	3	00055000	HOSE ROUTING CLAMP
8	3	05010620	BOLT .313-18 x 1.50 G8 HHCS ZC
9	3	05020909	NUT .313-18 GC TOPLOCK C&W
10	6	05050608	CABLE TIE,HD,14Lx.3W,BLACK,120



00050926 REVERSING KIT, 3X10 CYLINDER

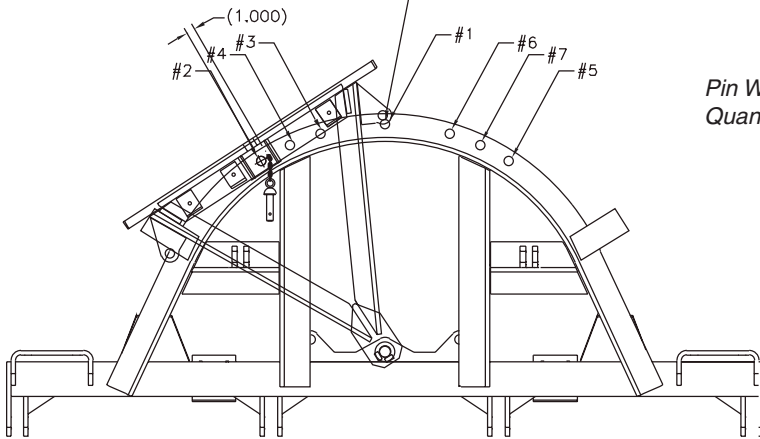
Item	Qty.	Part Number	Description
1	2	05000000	CYLINDER, 3X10 DA <i>See Page 56</i>
2	4	05022040	PIN, 1 X 4.25, NO HEAD
3	8	05021202	BUSHING, 1.5 X 1 X 10GA, ZINC
4	8	05022026	PIN, .25 X 2, ROLL, ZINC
5	1	05043067	CUSHION BLOCK ASSEMBLY W/ HOSE
6	1	05037080	HOSE ASSEMBLY, PLOW, W/ R608
7	3	00055000	CLIP, HOSE HOLD DOWN
8	3	05010620	BOLT, .3125 -18 X 1.5, G8, HHCS, ZINC
9	3	05020909	NUT, .3125-18, GC, TOP LOCK, C&W
10	6	05050608	CABLE TIE

00050953 REVERSING KIT, 4X10 CYLINDER

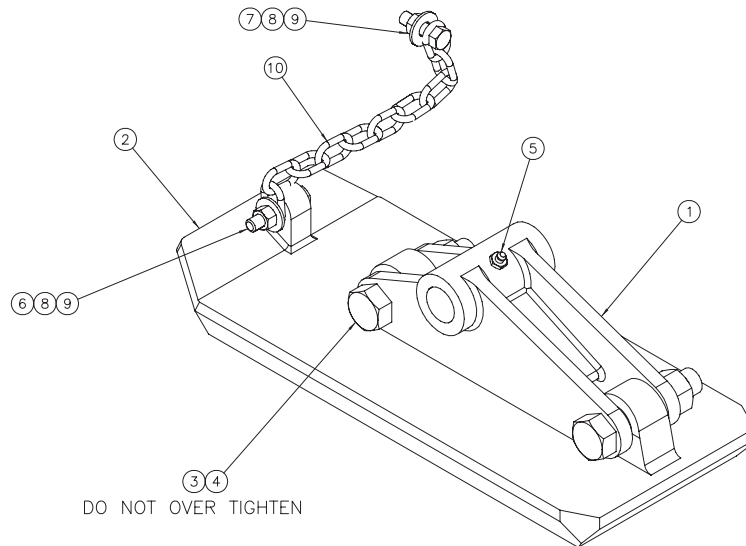
Item	Qty.	Part Number	Description
1	2	05002640	CYLINDER, 4X10 DA <i>See Page 57</i>
2	4	05022040	PIN, 1 X 4.25, NO HEAD
3	8	05021202	BUSHING, 1.5 X 1 X 10GA, ZINC
4	8	05022026	PIN, .25 X 2, ROLL, ZINC
5	1	05043067	CUSHION BLOCK ASSEMBLY W/ HOSE
6	1	05037080	HOSE ASSEMBLY, PLOW, W/ R608
7	3	00055000	CLIP, HOSE HOLD DOWN
8	3	05010620	BOLT, .3125 -18 X 1.5, G8, HHCS, ZINC
9	3	05020909	NUT, .3125-18, GC, TOP LOCK, C&W
10	6	05050608	CABLE TIE

00043113 REVERSING KIT, PLOW, MANUAL W/ PUSHFRAME MODIFICATIONS

- STEP 1. MOUNT A-FRAME ONTO PUSHFRAME
- STEP 2. MATCH DRILL 1-1/16 HOLE IN THE A-FRAME THROUGH FORMED ANGLE; DRILL HOLE #1
- STEP 3. ROTATE A-FRAME UNTIL IT HITS THE PUSHFRAME STOPS; DRILL HOLE #2
- STEP 4. ROTATE A-FRAME SO THE HOLE IS CENTERED BETWEEN HOLES #1 & #2; DRILL HOLE #3
- STEP 5. ROTATE A-FRAME AGAIN SO THE HOLE IS CENTERED BETWEEN HOLES #2 & #3; DRILL HOLE #4
- STEP 6. TO LOCATE HOLES #5-#7 REPEAT STEPS 3-5

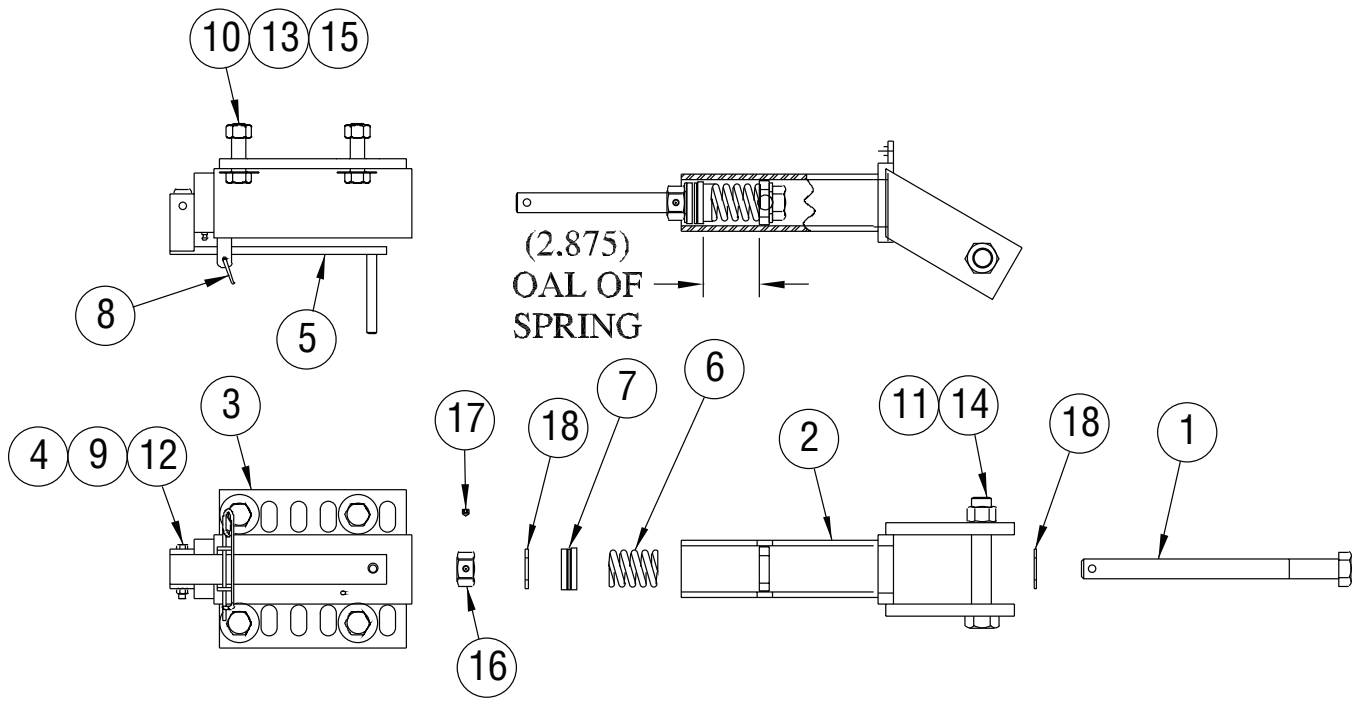


*Pin Weldment, Locking, Manual RVS
Quantity 1, Part Number 00055928*



00098355 SKID SHOE ASSEMBLY, CAST, 2 PIECE

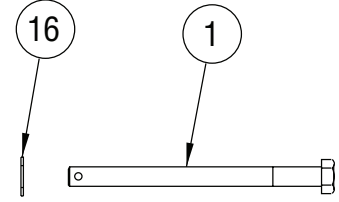
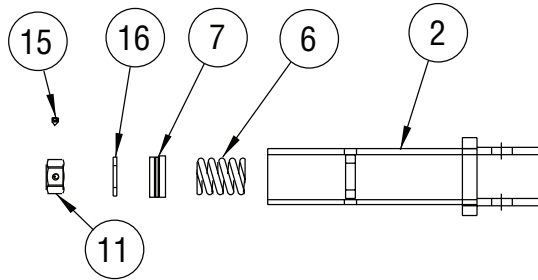
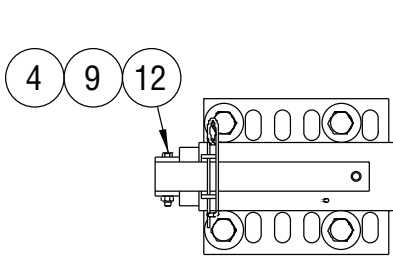
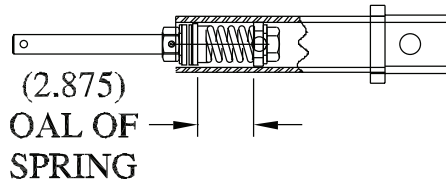
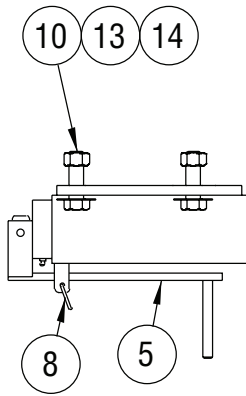
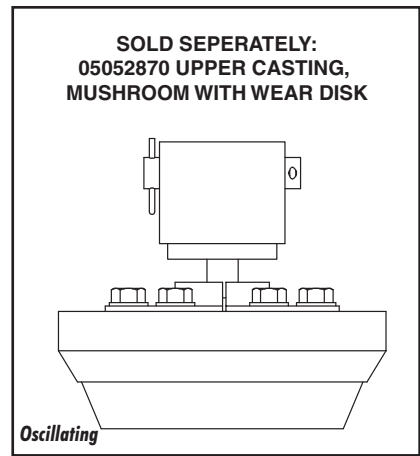
Item	Qty.	Part Number	Description
1	1	00098356	BRACKET MOUNING, SKID SHOE
2	1	00098357	SKID SHOE
3	2	05010770	BOLT, .75-10, G8, HHCS, ZINC
4	2	05020849	NUT, .75-10, CG, TOP LOCK,C&W
5	1	05050003	GREASE FITTING, .125 NPT
6	1	05010646	BOLT, .375-16 X 1.75, G8, HHCS, ZINC
7	1	05010644	BOLT, .375-16 X 1.25, G8, HHCS, ZINC
8	2	05021307	WASHER, .375, FLAT, ZINC
9	2	05020898	NUT, .375-16, GC, TOP LOCK,C&W
10	1	00053319	CHAIN PRF COIL, .188 X 10 LINKS



00051200 JACK ASSEMBLY, SCREW, ROUND

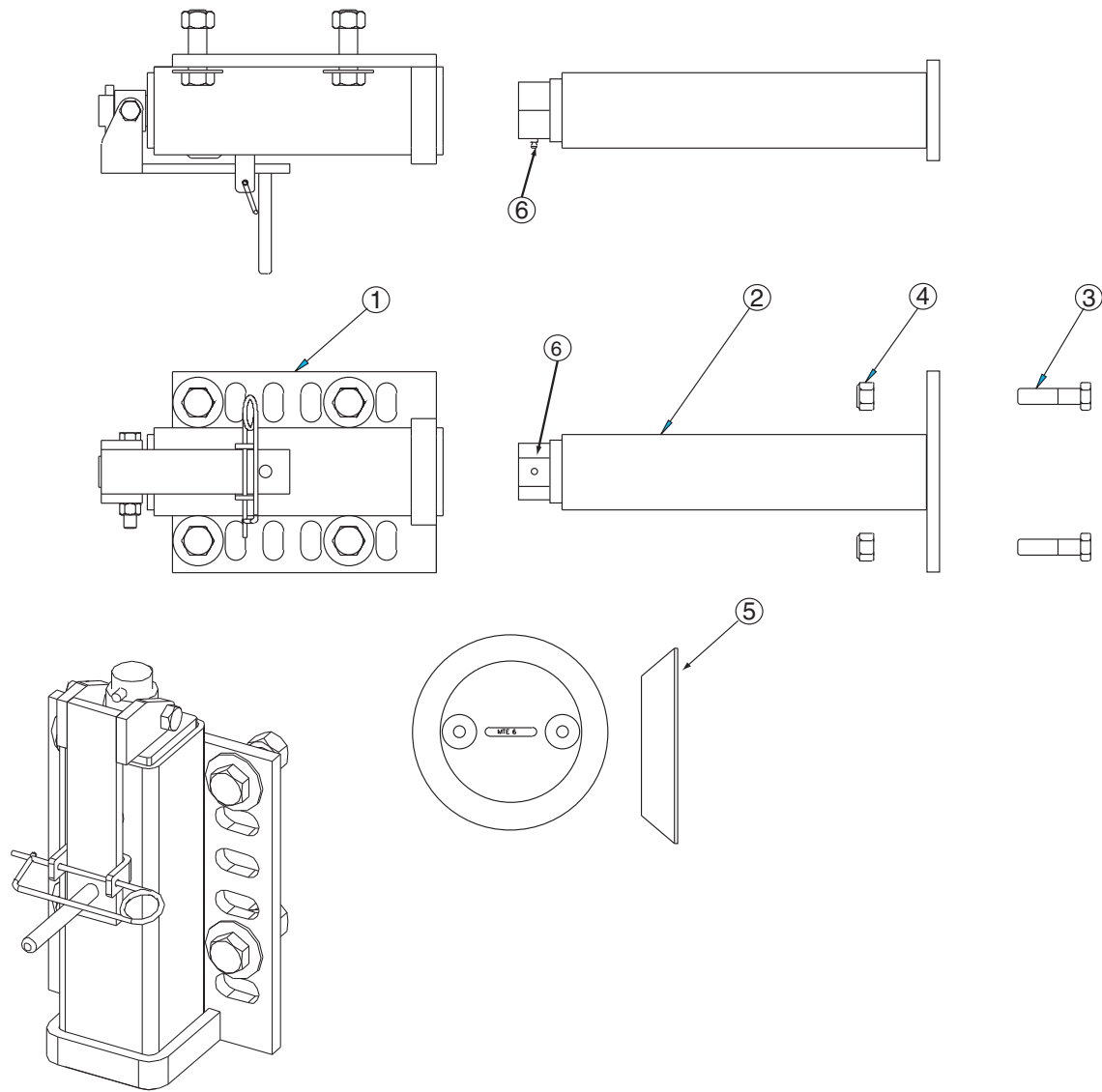
Item	Qty.	Part Number	Description
1	1	00051204	ADJUSTMENT SCREW
2	1	00051202	INNER TUBE WELDMENT
3	1	00051201	OUTER TUBE WELDMENT
4	1	00010000	NUT, ADJUSTMENT SCREW
5	1	00051203	ADJUSTMENT HANDLE WELDMENT
6	1	05035000	SPRING, COMPRESSION
7	1	05030000	BEARING THRUST
8	1	05022074	PIN, SAFETY, .120 DIA X 4.375 LG
9	1	05010624	BOLT, .3125-18 X 2.5, G8, HHCS, ZINC
10	4	05010766	BOLT, .75-10 X 2.5, G8, HHCS, ZINC
11	1	05010822	BOLT, 1-8 X 6, G8, HHCS, ZINC
12	1	05020909	NUT, .3125 -18, GC, TOP LOCK, C&W
13	4	05020849	NUT, .75-10, GC, TOP LOCK, C&W
14	1	05020834	NUT, 1-8, GC, TOP LOCK, C&W
15	8	05021063	WASHER, .75, STRUCTURAL, FLAT, ZINC
16	1	00121661	NUT, RETAINER, ADJ, SCREW
17	1	05017137	SCREW, .313-18 X .375", SSS, CP, ZC
18	2	05021020	WASHER, 1" FLAT, MIL-CARB, SAE ZC

Items 1-15 are included in the Jack Assembly, Plow, Skid 8 Caster this can be ordered as an assembly by using the part number 00051200.



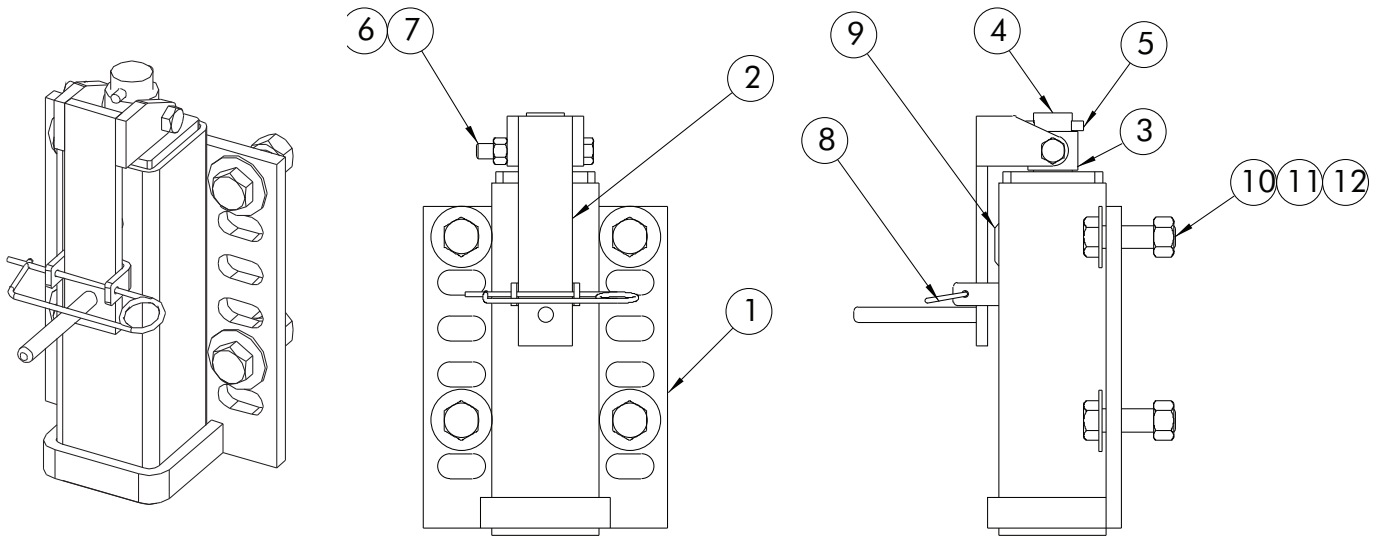
00054906 JACK ASSEMBLY, PLOW, SCREW ROUND

Item	Qty.	Part Number	Description
1	1	00051204	ADJUSTMENT SCREW
2	1	00099360	JACK WELDMENT, INNER TUBE, ROUND
3	1	00051201	OUTER TUBE WELDMENT
4	1	00010000	NUT, ADJUSTMENT SCREW
5	1	00051203	HANDLE WELDMENT
6	1	05035000	SPRING, COMPRESSION, 2.13 OD
7	1	05030000	BEARING THRUST, 1" ID
8	1	05022074	PIN SAFETY, .120 DIA X 4.375 LONG
9	1	05010624	BOLT, .3125-18 X 2.5, G8, HHCS, ZINC
10	4	05010766	BOLT, .75-10 X 2.5, G8, HHCS, ZINC
11	1	00121661	NUT, RETAINER, ADJ SCREW, PLOW JACK SUSPENSION
12	1	05020909	NUT, .313-18, GC, TOP LOCK, C&W
13	4	05020849	NUT, .750-10, GC, TOP LOCK, C&W
14	8	05021063	WASHER, .750, FLAT, STRUCTURAL, ZINC
15	1	05017137	SCREW, .313-18 X .375, SSS, CP, ZINC
16	2	05021020	WASHER, 1.0 FLAT, MIL-CARB, SAE, ZINC



MUSHROOM SHOES			
Item	Qty.	Part Number	Description
1	1	00041967	JACK ASSEMBLY, OUTER TUBE, SQUARE 1A 00051025 ACME NUT JACK ADJUSTMENT
2	1	00051036	ASSEMBLY, INNER TUBE
3	2	05010741	BOLT, .625-11 X 2.5, G8, ZINC
4	2	05020837	NUT, .625-11, GC, TOP LOCK, C&W
5	2	05051009 05050120	SHOE, MUSHROOM, TAPERED, 11.5 X 8 SHOE, MUSHROOM, 10.25, CARBIDE
6	1	05050288	GREASE ZERK, .25-28, STRAIGHT

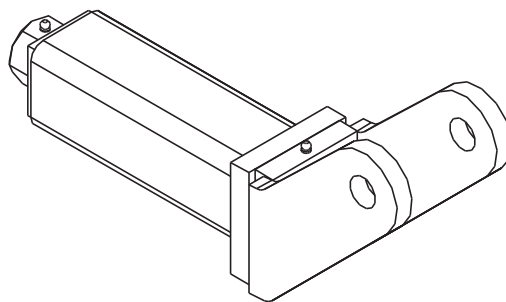
Items 1-4 are included in the Jack Assembly, Mushroom Shoe Jack and can be ordered using the part number 00051035.

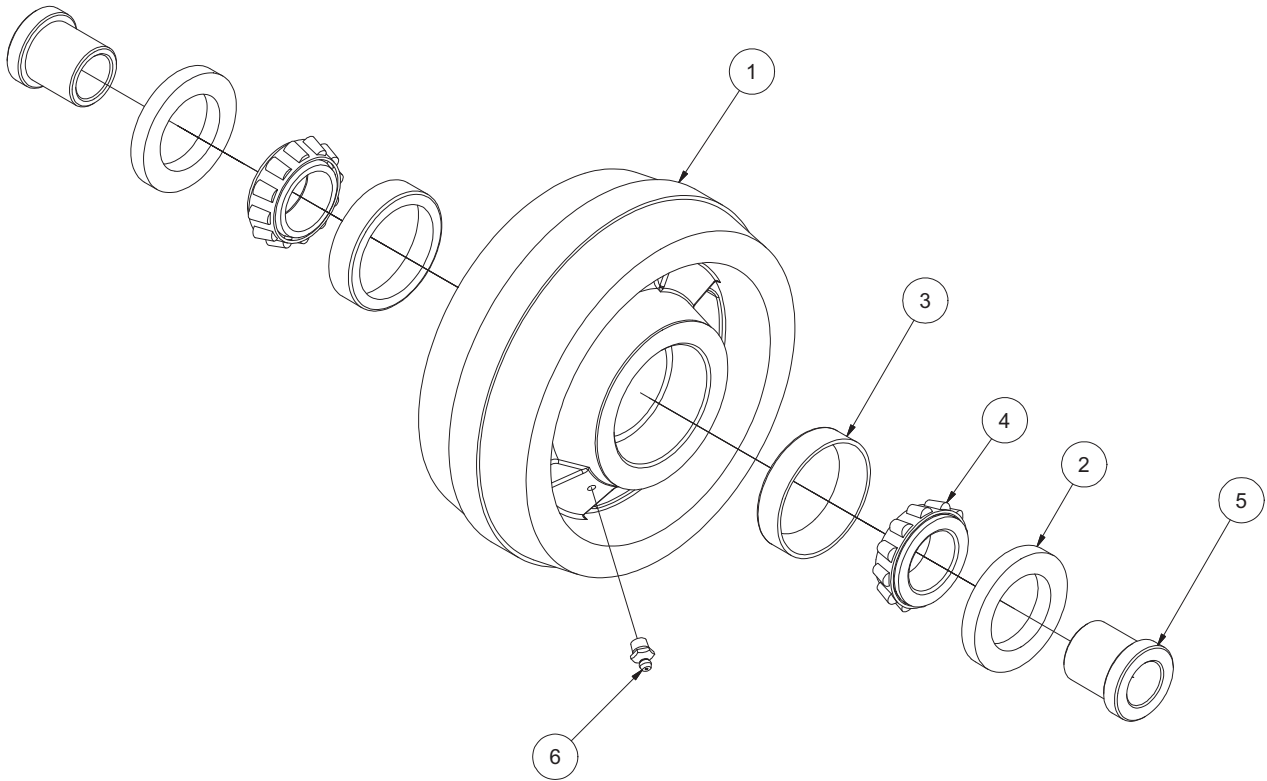


00041967 JACK ASSEMBLY, OUTER TUBE, SQUARE TUBE STYLE

Item	Qty.	Part Number	Description
1	1	00051027	ASSEMBLY, OUTER TUBE
2	1	00051020	ASSEMBLY, HANDLE CRANK
3	1	00051022	PIPE, COLLAR CRANK
4	1	00051021	ASSEMBLY, ROD, ACME THREADED, CRANK
5	1	05022039	PIN, ROLL, .3125 X 2
6	1	05010699	BOLT, .5-13 X 3.5, G8, HHCS, ZINC
7	1	05020847	NUT, .5-13, GC, TOP LOCK, C&W
8	1	05022074	PIN SAFETY, .120 DIA X 4.375 LG
9	1	05050023	CAP GREASE, PLASTIC, 1.3125 DIA
10	4	05010766	BOLT, .75-10 X 2.5, G8, HHCS, ZINC
11	8	05021063	WASHER, .75, FLAT, STRUCTURAL ZINC
12	4	05020849	NUT, .75-10, GC, TOP LOCK, C&W

**00058146 INNER TUBE WELDMENT, CASTER/SKID
OLD STYLE SQUARE**

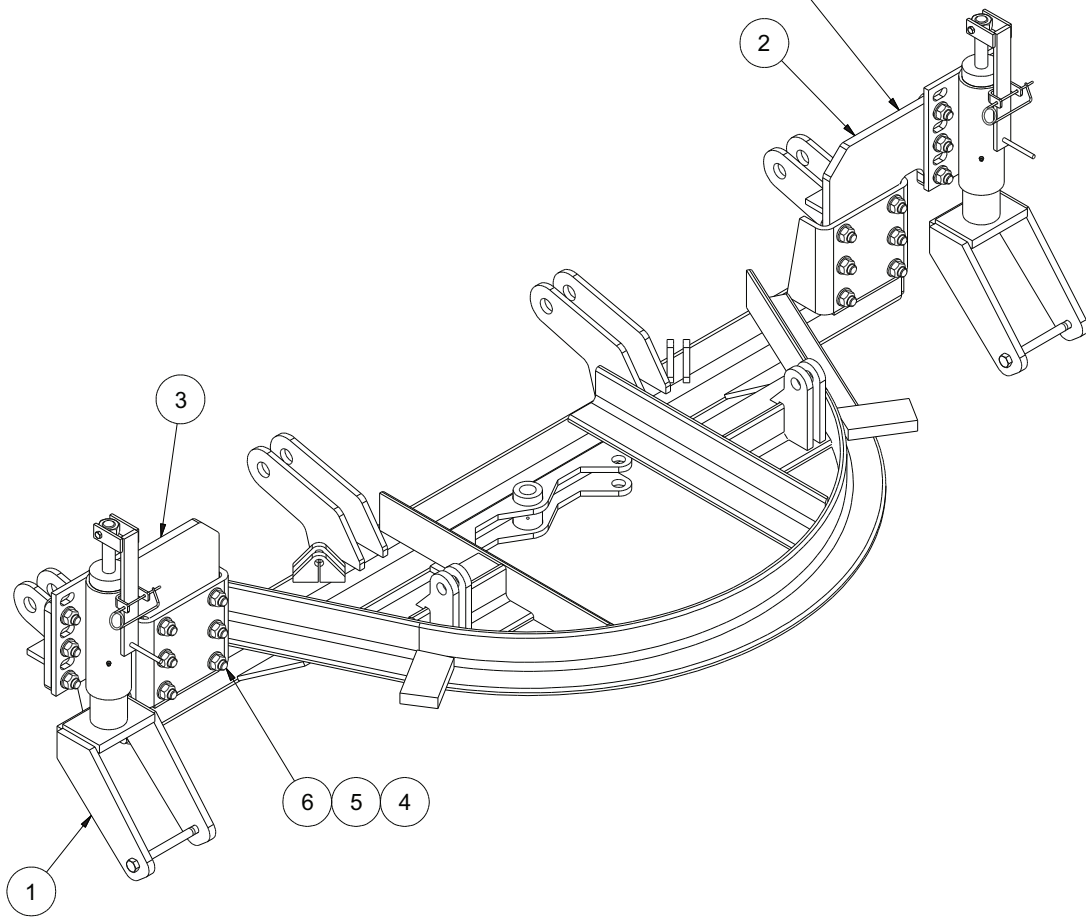




00011653 CASTER WHEEL PARTS LIST

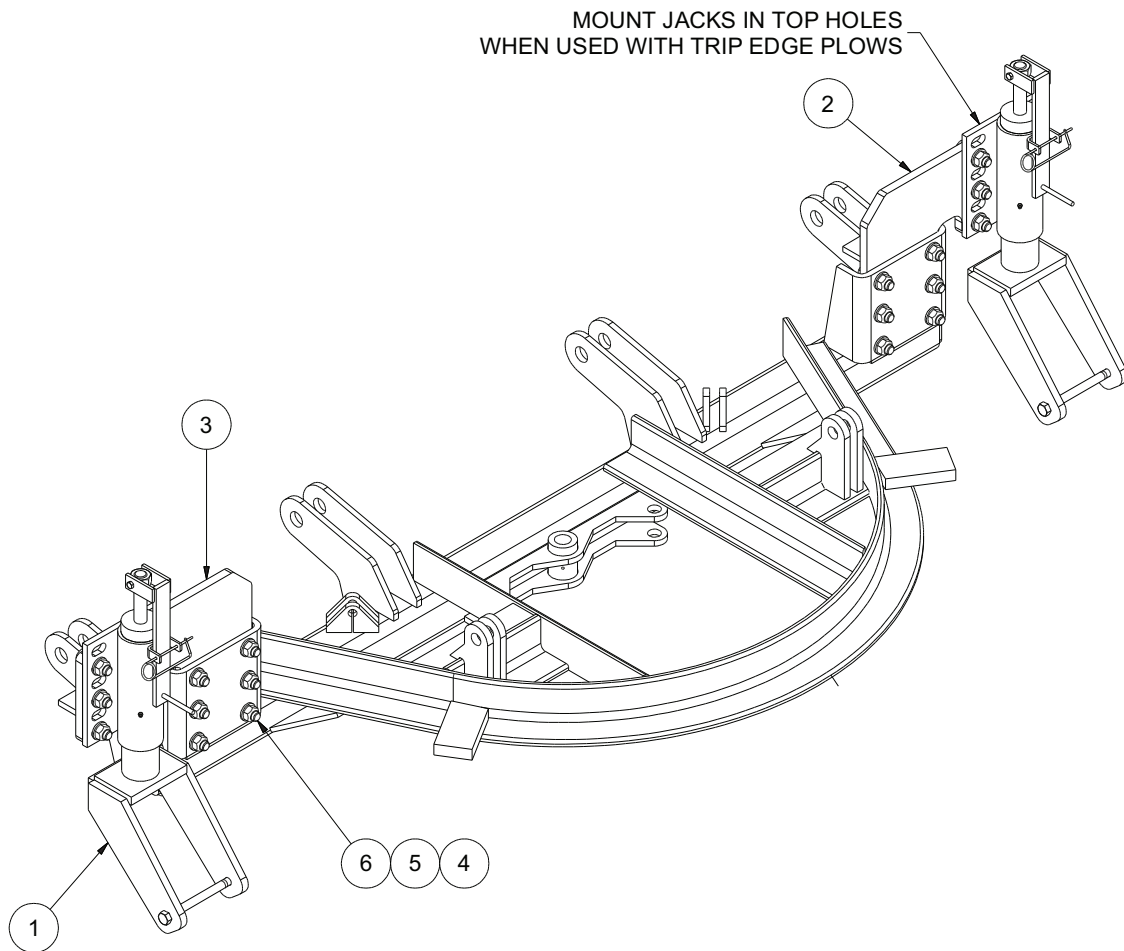
Item	Qty.	Part Number	Description
1	1	05051398	WHEEL ASSEMBLY, 3X8, CASTER W/ RACE
2	2	05053363	SEAL, BEARING, HARWAL, MBR70
3	2	05030015	RACE, KOYO FOR 14137A
4	2	05030014	BEARING, TAPERED INNER RACE
5	2	05051326	BUSHING FOR 3X8 CASTER
6	1	05050003	GREASE ZERK

MOUNT JACKS IN TOP HOLES
WHEN USED WITH TRIP EDGE PLOWS



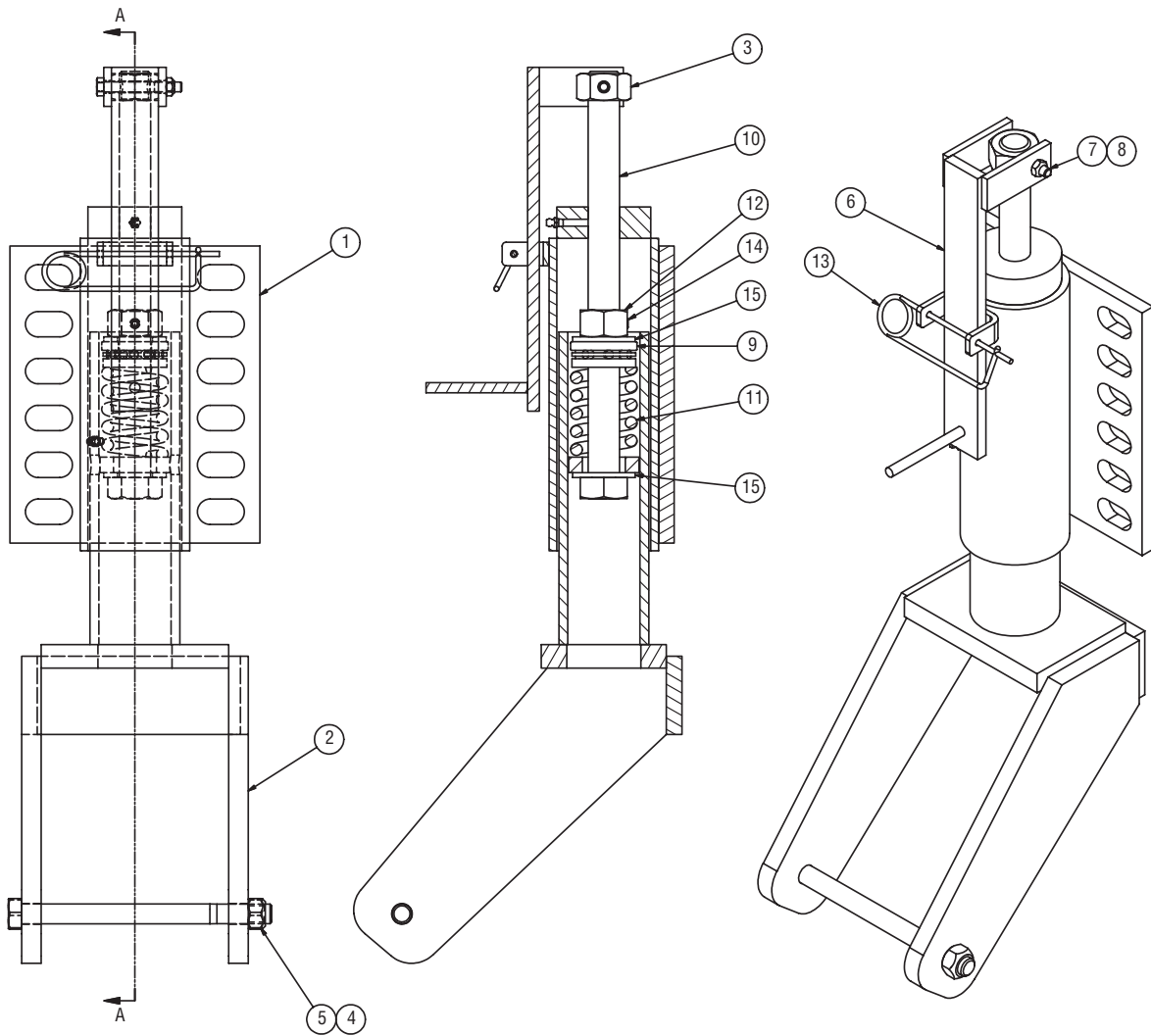
00106638 JACK KIT, PLOW, PNEU TIRE, 16.0 FOAM FILLED, ROUND SCREW STYLE

Item	Qty.	Part Number	Description
1	2	00106639	JACK ASSEMBLY, PLOW, SCREW ROUND
2	1	00106280	EXTENSION WELDMENT, MOUNT, RH
3	1	00106281	EXTENSION WELDMENT, MOUNT, LH
4	48	05021063	WASHER, .750 STRUCTURAL, FLAT, ZINC
5	24	05020849	NUT, .750-10, GC, TOP LOCK, C&W
6	24	05010766	BOLT, .750-10 X 2.5, G8, HHCS, ZINC
7	2	05051084	WHEEL ASSEMBLY, PNEU, FOAM FILLED



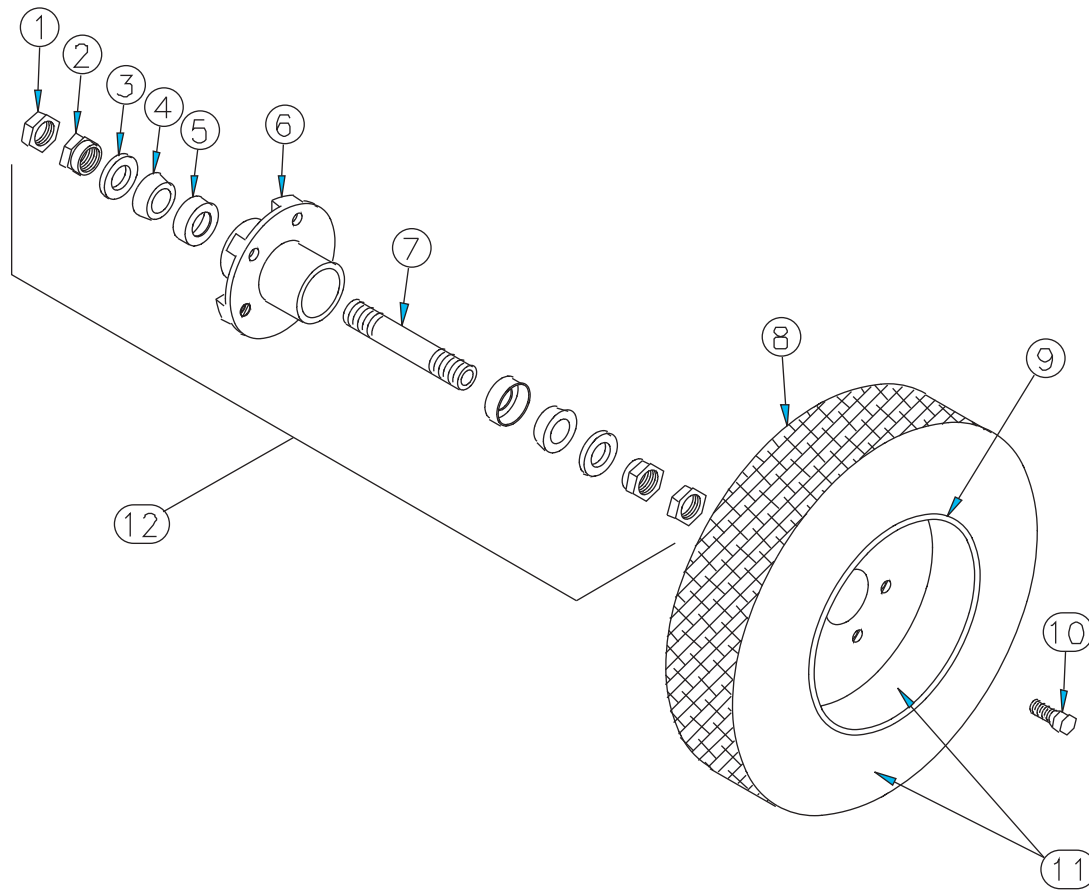
00106637 JACK KIT, PLOW, PNEU TIRE, 16.0 ROUND SCREW STYLE

Item	Qty.	Part Number	Description
1	2	00106639	JACK ASSEMBLY, PLOW, SCREW ROUND
2	1	00106280	EXTENSION WELDMENT, MOUNT, RH
3	1	00106281	EXTENSION WELDMENT, MOUNT, LH
4	48	05021063	WASHER, .750 STRUCTURAL, FLAT, ZINC
5	24	05020849	NUT, .750-10, GC, TOP LOCK, C&W
6	24	05010766	BOLT, .750-10 X 2.5, G8, HHCS, ZINC
7	2	00011654	WHEEL ASSEMBLY, PNEU <i>See Page 49</i>



00106639 JACK ASSEMBLY, PLOW, SCREW, ROUND PNEUMATIC WHEEL

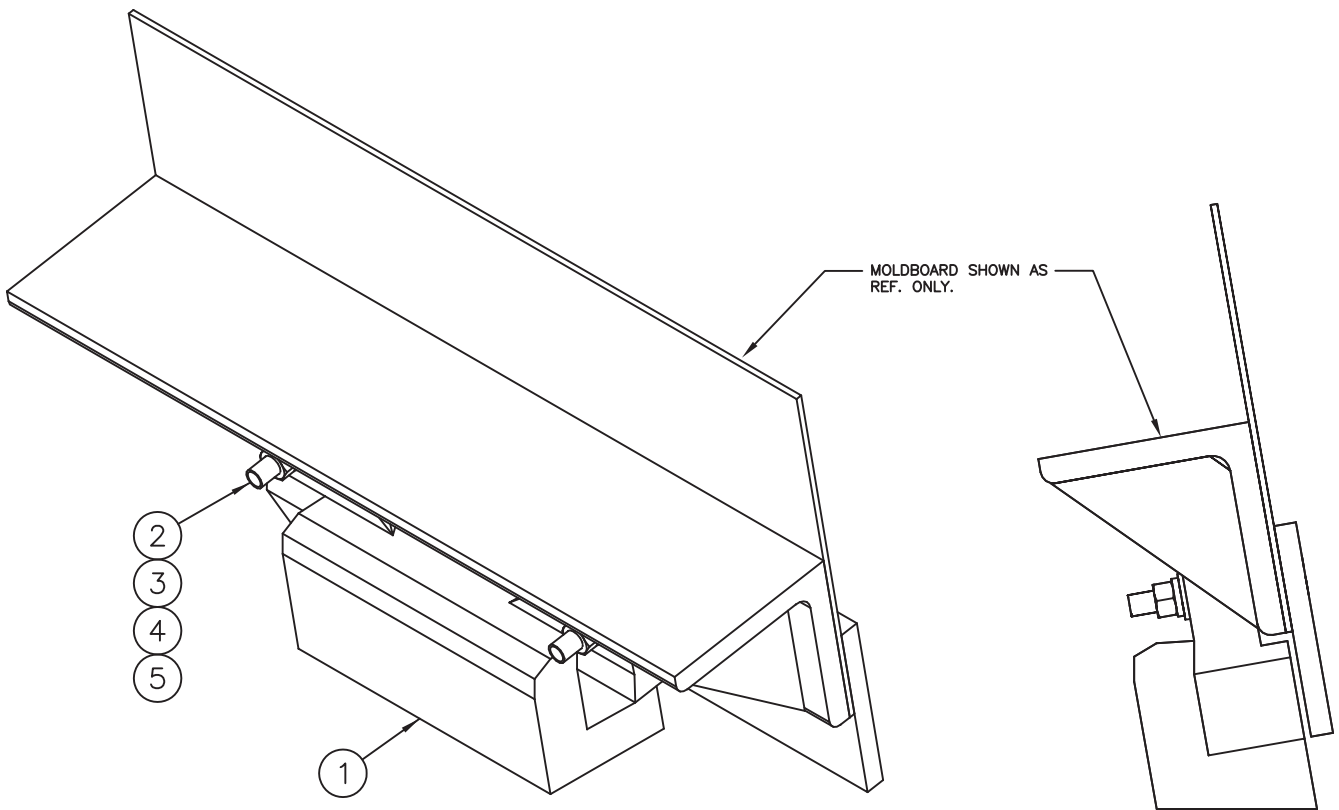
Item	Qty.	Part Number	Description
1	1	00051201	JACK WELDMENT, PLOW, OUTER ROUND
2	1	00106640	YOKE WELDMENT, JACK PLOW
3	1	00010000	NUT, ADJUSTMENT, JACK PLOW
4	1	05010755	BOLT, .625-11 X 8, G8, HHCS, ZINC
5	1	05020837	NUT, .625-11, GC, TOP LOCK, C&W
6	1	00051203	HANDLE WELDMENT, ADJ, PLOW JACK
7	1	05010624	BOLT, .313-18 X 2.5, G8, HHCS, ZINC
8	1	05020909	NUT, .313-18, GC, TOP LOCK, C&W
9	1	05030000	BEARING, THRUST, 1" ID
10	1	00051204	ADJUSTMENT SCREW
11	1	05035000	SPRING, COMPRESSION, 2.13" OD, 2.875" OAL
12	2	05020125	NUT, 1-8, G2, JAM, ZINC
13	1	05022074	PIN, .120 X 4.375, SAFETY



00011654 WHEEL ASSEMBLY, PNEUMATIC

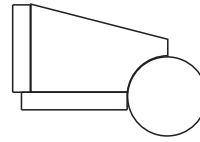
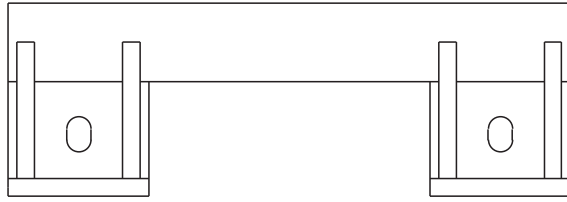
Item	Qty.	Part Number	Description
1	2	---	JAM NUT, 1-14
2	2	---	NUT 1-14
3	2	05051176	SEAL WHEEL
4	2	05030013	BEARING
5	2	05030017	CUP
6	1	00082814	HUB
7	1	05051439	SPINDLE
8	1	05051204	TIRE
9	1	05050539	RIM
10	5	05016985	BOLT
11	1	05051084	FOAM FILLED TIRE AND RIM
12	1	05051083	PNEUMATIC WHEEL HUB ASSEMBLY

****Items 1 & 2 are sold with Item 7.***



00061797 SHOE KIT, SKID, MOLDBOARD

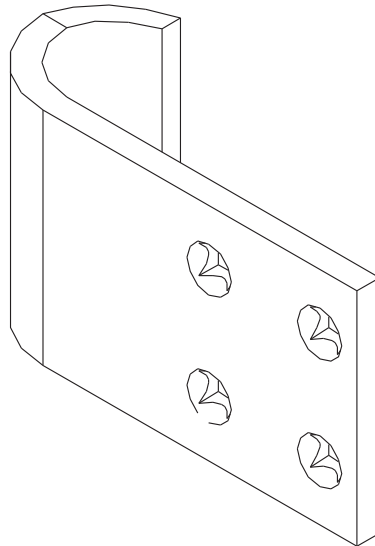
Item	Qty.	Part Number	Description
1	2	05050221	SHOE MOLDBOARD, CAST, 8", 10°
		05050220	SHOE MOLDBOARD, CAST, 5" & 6", 10°
		05051036	SHOE MOLDBOARD, CASTING, 5", 30°
		05051037	SHOE MOLDBOARD, CASTING, 8", 35°
2	4	05014560	BOLT, .625-11 X 5, G8, DOME HEAD, PLAIN
3	4	05021383	WASHER, .625, LOCK, HEAVY, ZINC
4	4	05020270	NUT, .625-11, G8, HEX, ZINC



00059115 SHOE KIT, SKID, PLOW, MOLDBOARD			
Item	Qty.	Part Number	Description
1	2	00010271	SHOE ASSEMBLY, MOLDBOARD
2	4	05014553	BOLT, .625-11 X 3, G8, DOMEHEAD PLAIN
3	4	05010739	BOLT, .625-11 X 2, G8, HHCS, ZINC
4	8	05021383	WASHER, .625, LOCK, HEAVY, ZINC
5	8	05020270	NUT, .625-11, G8, HEX, ZINC

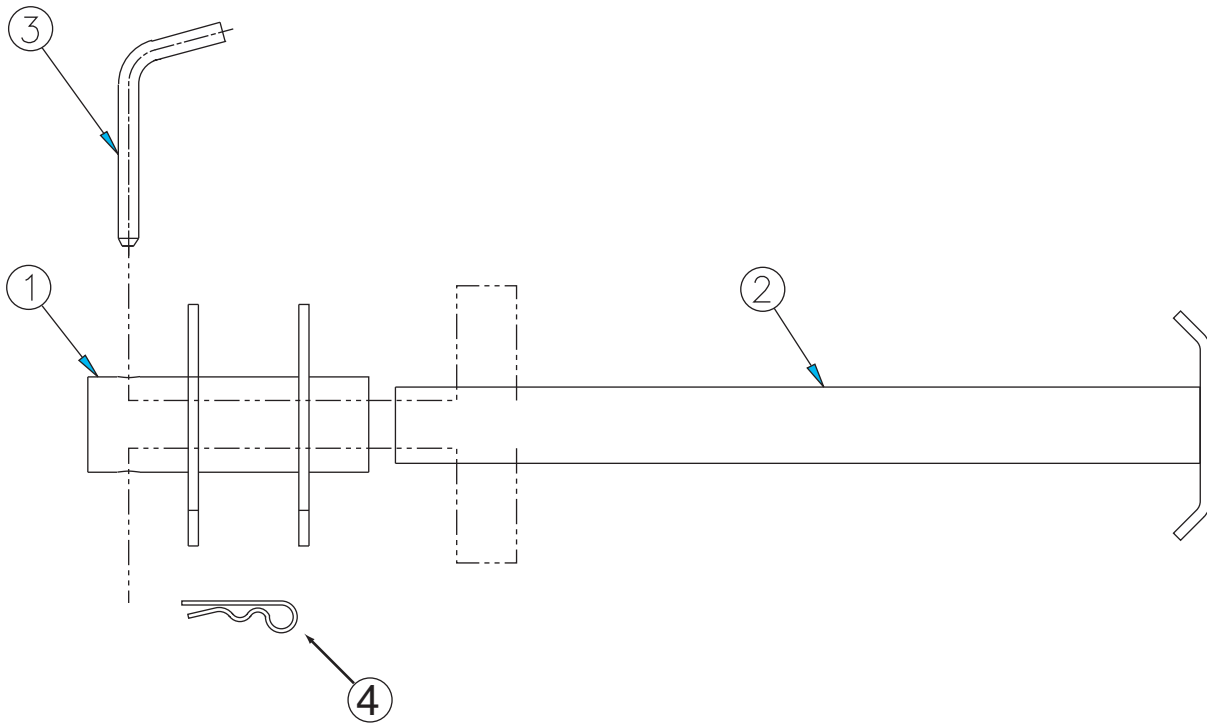
CURB GUARD KIT, CAST HALF MOON

Item	Qty.	Part Number	Description
1	1	05051076	GUARD, CURB, HALF-MOON, CAST IRON
2	2	05014553	BOLT, .625-11 X 3, G8, DOME HEAD, PLAIN



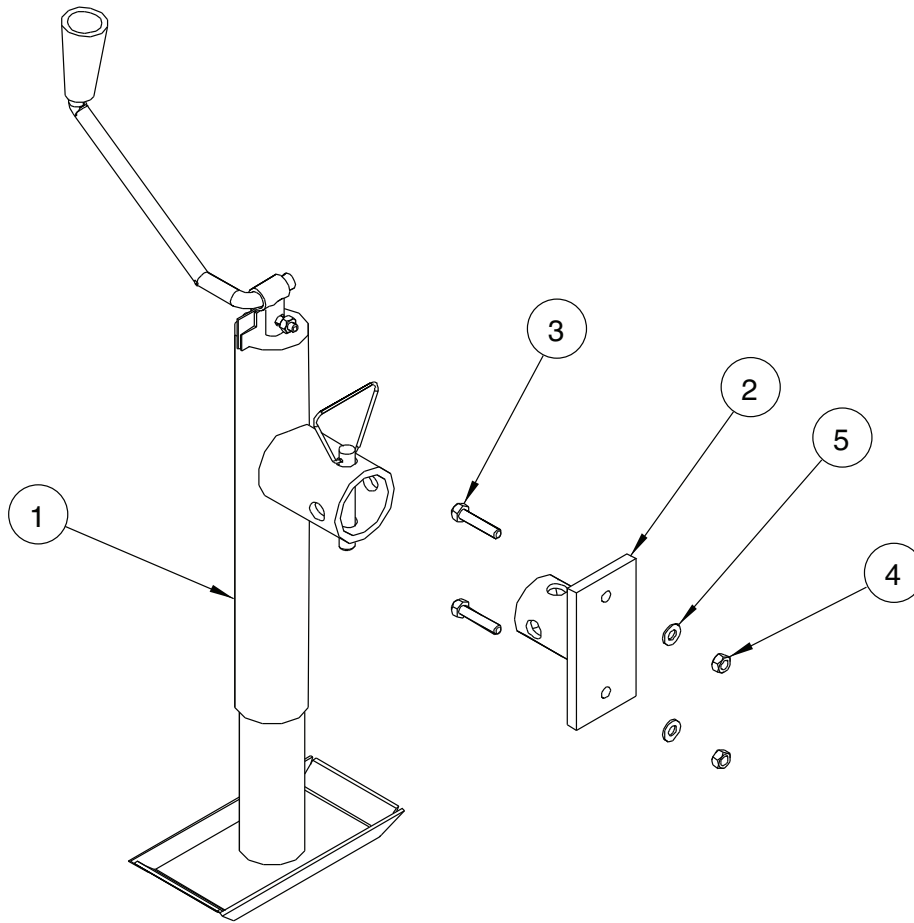
CURB GUARD KIT, WRAP AROUND

Item	Qty.	Part Number	Description
1	1	05050000	CURB GUARD, .625 X 6
2	2	05014555	BOLT, .625-11 X 3.5, G8, DOME HEAD, PLAIN



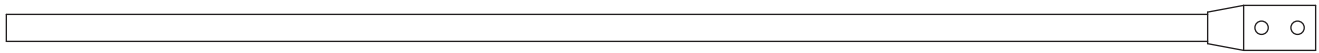
00010264 JACK KIT, PARKING JACK, A-FRAME PARKING JACK

Item	Qty.	Part Number	Description
1	1	00010265	TUBE JACK WELDMENT, OUTER PARKING
2	1	00010267	INNER TUBE ASSEMBLY
3	1	05022136	PIN, .5 X 4.5, 4" GRIP BENT, ZINC
4	1	05022035	PIN, #11, HAIR, ZINC



00061212 JACK KIT, PARKING, TOP WIND, TUBE MOUNT, REMOVABLE

Item	Qty.	Part Number	Description
1	1	05050227	JACK ASSEMBLY, TOP WIND, TUBE MOUNT
2	2	00084491	MOUNT WELDMENT, JACK TOP WIND
3	4	05010645	BOLT, .375-16, GC, TOP LOCK, C&W
4	4	05020898	NUT, .375-16, GC, TOP LOCK, C&W
5	4	05021307	WASHER, .375, FLAT, ZINC



MARKERS

Item	Qty.	Part Number	Description
1	2	05051432	MARKERS, 36" FLUORESCENT ORANGE FLEXIBLE MARKERS
2	1	05051181	MARKER CABLE, 42" L, STRAIGHT, YELLOW W/ RED DAY GLO TIP

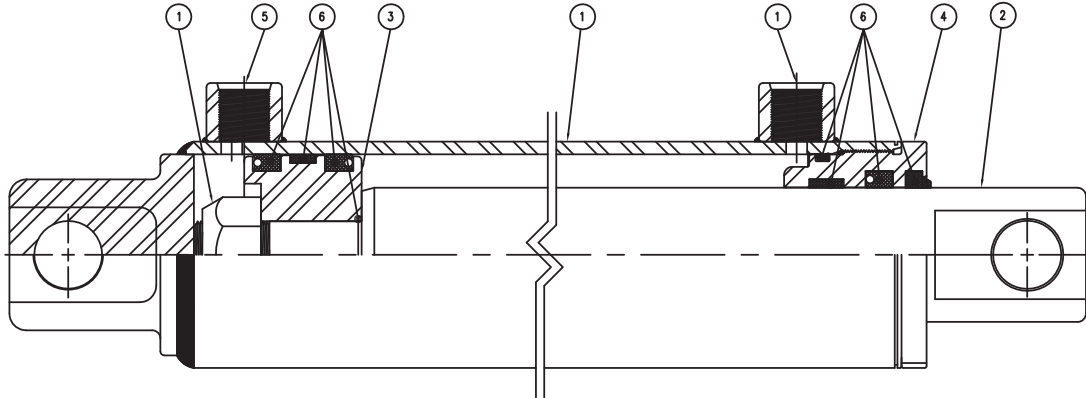
DEFLECTOR KIT, RUBBER

Item	Qty.	Part Number	Description
1	1	05050352 05051423 05051424	BELTING, RUBBER SNOW, 10' BELTING, RUBBER SNOW, 11' BELTING, RUBBER, SNOW, 12'
2	2	00143916 00143918	STRIP BACKING, RSD, 35.875, END (USED ON 10') STRIP BACKING, RSD, 47.875, END (USED ON 11' & 12')
3	1	00143917 00143915	STRIP BACKING, RSD, 47.875, CENTER (USED ON 10' & 12') STRIP BACKING, RSD, 35.875, END (USED ON 11')
4	17 FOR 10FT 19 FOR 11 & 12'	05010620	BOLT, .3125-18 X 1.5, G8, HHCS, ZINC
5	17 FOR 10FT 19 FOR 11 & 12'	05020606	NUT, .3125-18, G2, SPINLOCK, ZINC

05000000 CYLINDER, 3 X 10, DA, REVERSE, NITRATED ROD, POLY PAK

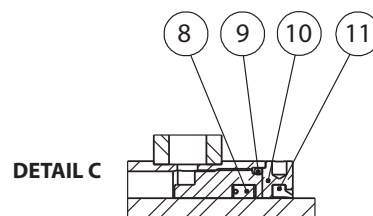
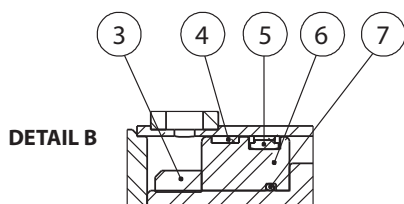
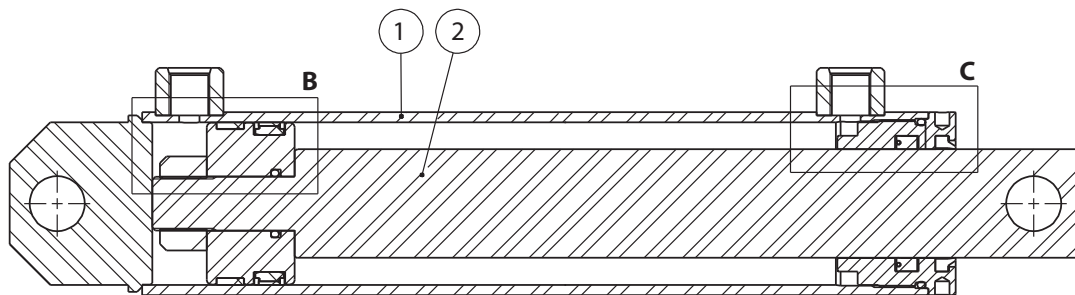
DIREKT FORCE

ITEM	QTY	PART #	DESCRIPTION
1	1	---	BODY SUB ASSY
2	1	05003252	ROD
3	1	05003253	PISTON
4	1	05003254	GLAND
5	1	---	HARDWARE KIT
6	1	05003269	SEAL KIT



BEST METAL

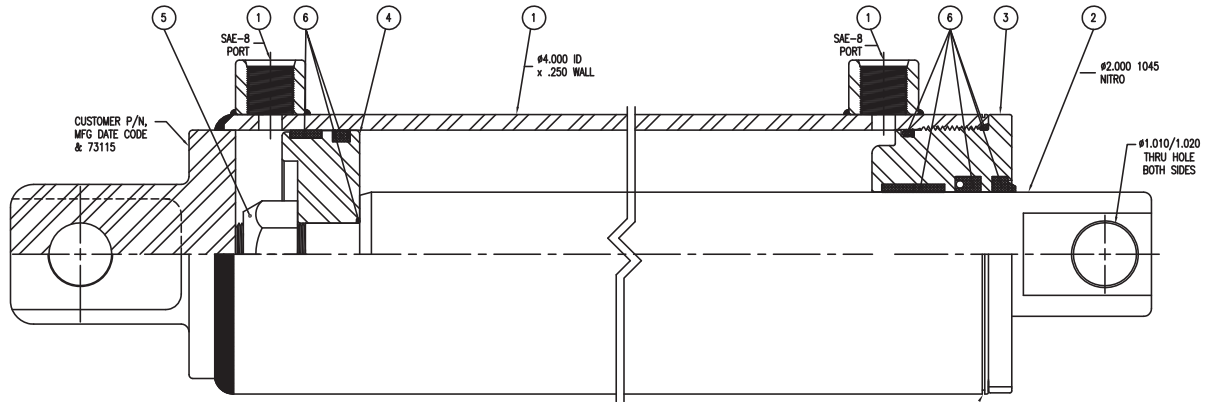
ITEM	QTY	PART #	DESCRIPTION
1	1	N/A	JACKET ASSEMBLY
2	1	N/A	ROD, EXTERNAL
3	1	N/A	LOCK NUT
4	1	*	WEAR RING
5	1	*	DYNAMIC SEAL
6	1	*	PISTON
7	1	*	O-RING
8	1	*	POLY PAK
9	1	*	O-RING
10	1	05003339	GLAND NUT
11	1	05002527	ROD WIPER
		05000013	SEAL KIT (Includes all parts marked with an *)

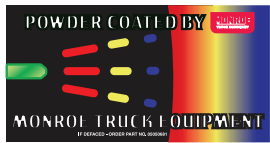


05002640 CYLINDER, 4 X 2 X 10 STROKE DA

DIREKT FORCE

PART #	DESCRIPTION
---	BODY SUB-ASSEMBLY
---	ROD
---	GLAND
05003366	PISTON
05003240	HARDWARE KIT
05003265	SEAL KIT





WARNING

Possible serious injury and equipment damage from loosening of equipment fasteners. Fasteners on snow and ice removal equipment may loosen due to vibration and repetitive movements. Retighten all equipment mounting fasteners after the first 8 hours of use, then check tightness weekly after that. Use a torque wrench when specific torque values are given in the installation manual. If fasteners need to be replaced, be certain to use the correct size, grade and type to prevent failure.

05052628

WARNING

Springs under tension! If spring releases while performing maintenance, serious injury or death could result. Use caution when working in area.

IF DEFACED - ORDER PART NO. 05052547

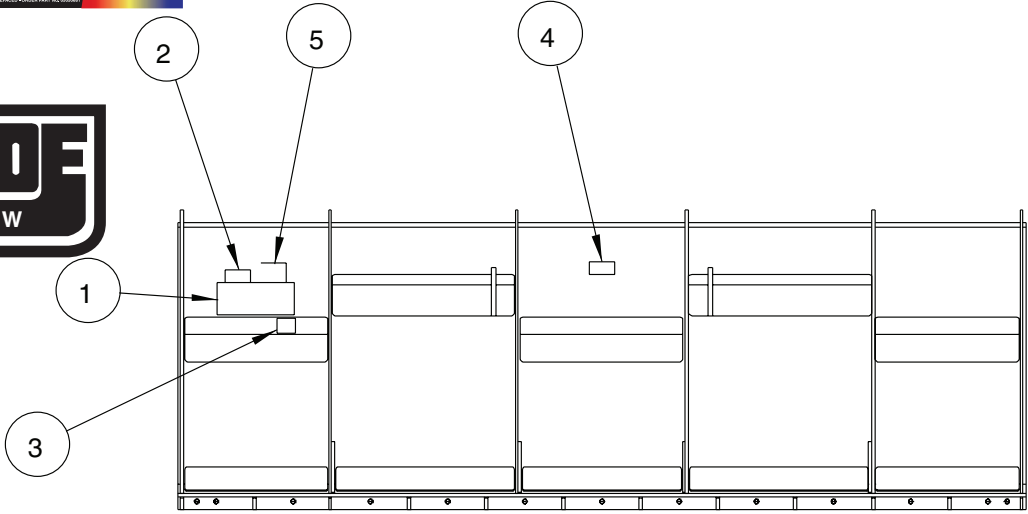


MONROE
SNOW & ICE CONTROL

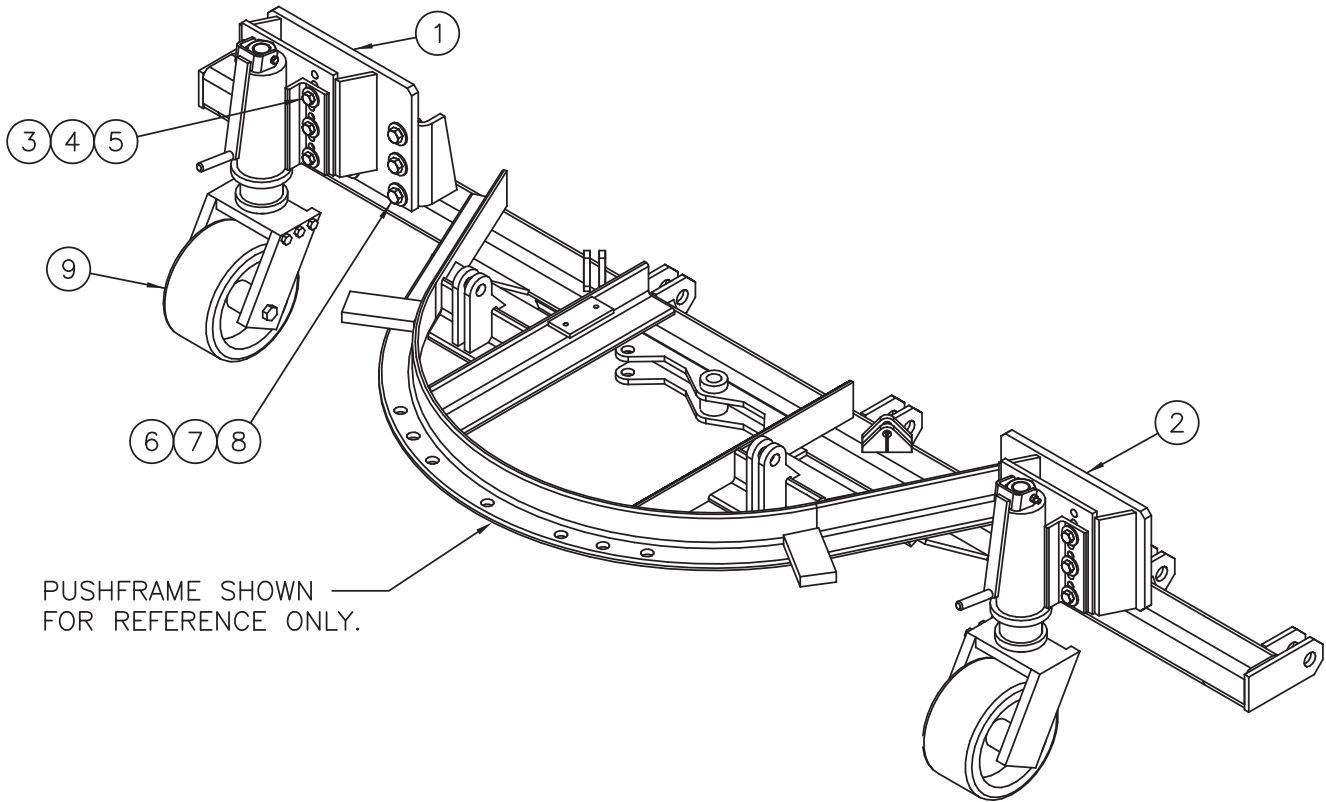
QUALITY CHECK

Inspected by: _____

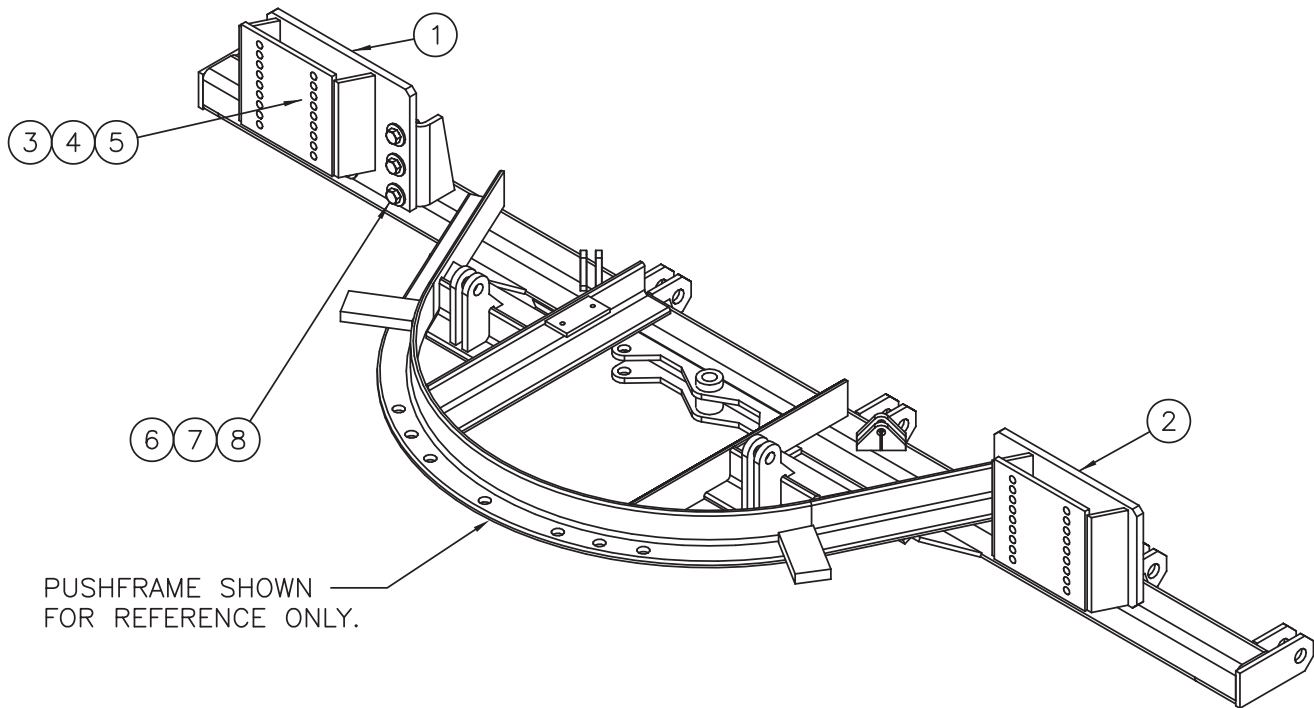
1 0505231



00055962 DECAL KIT, PLOW			
Item	Qty.	Part Number	Description
1	1	05051507	DECAL,MONROE SNOWPLOW,12x5
2	1	05050681	DECAL,4" x2",BONDED POWDER
3	1	05052311	DECAL,4" X 3" QUALITY CHECK
4	1	05052547	DECAL,WARNING SPRINGS UNDER TENSION
5	1	05052628	DECAL,WARNING,TIGHTEN FASTENERS



00149801 SNOW WHEEL KIT, RVS,4, 5, 6 ATCH 10'-12', W/ SNOW WHEEL			
ITEM	QTY	PART NUMBER	DESCRIPTION
1	1	00148093	EXT PL WLDMT,LH,SNOW WHEEL,
2	1	00148094	EXT PL WLDMT,RH,SNOW WHEEL,
3	12	05010739	BOLT .625-11 x 2.00 G8 HHCS ZC
4	12	05020837	NUT .625-11 GC TOPLOCK C&W
5	24	05021311	WASHER .625 FLAT ZC
6	12	05010766	BOLT .750-10 x 2.50 G8 HHCS ZC
7	12	05020849	NUT .750-10 GC TOPLOCK C&W
8	24	05021312	WASHER .750 FLAT ZC
9	2	05050762	WHEEL,SWIVEL W/ADJUSTER,6509



00148092 SNOW WHEEL KIT, RVS, 4, 5, 6 ATCH, 10'-12', W/O SNOW WHEELS

ITEM	QTY	PART NUMBER	DESCRIPTION
1	1	00148093	EXT PL WLDMT,LH,SNOW WHEEL,
2	1	00148094	EXT PL WLDMT,RH,SNOW WHEEL,
3	12	05010739	BOLT .625-11 x 2.00 G8 HHCS ZC
4	12	05020837	NUT .625-11 GC TOPLOCK C&W
5	24	05021311	WASHER .625 FLAT ZC
6	12	05010766	BOLT .750-10 x 2.50 G8 HHCS ZC
7	12	05020849	NUT .750-10 GC TOPLOCK C&W
8	24	05021312	WASHER .750 FLAT ZC

MONROE TRUCK EQUIPMENT, INC. WARRANTY SNOW & ICE CONTROL PRODUCTS

Monroe Truck Equipment, Inc. warrants to the original purchaser, that if any part of the product proves to be defective in workmanship or material within **ONE YEAR** of the original installation, and is returned to us within 30 days of the discovered defect, we will (at our option) repair or replace the defective part. This warranty does not apply to damage resulting from misuse, neglect, accident, improper installation, normal wear items or lack of maintenance. This warranty is exclusive and supersedes all other warranties, whether expressed or implied. **Monroe Truck Equipment, Inc.** neither assumes, nor authorizes anyone to assume for it, any other obligation or liability in connection with this warranty and will not be liable for consequential damages.

All engines, pumps, motors, cylinders and valves are warranted by their manufacturer and not by **Monroe Truck Equipment, Inc.**. The manufacturer's warranty will apply to these parts. Electrical and hydraulic components are not to be disassembled without the express written permission of Monroe Truck Equipment. Use of replacement parts other than original equipment voids this warranty.

All defective parts returned must be accompanied by the model number, serial number, date installed, date of defect, description of defect, and the name of the distributor from whom it was purchased. All warranty claims must have prior written approval from **Monroe Truck Equipment, Inc.**

Please return the warranty registration card that accompanies this manual to confirm receipt of this parts catalog and acknowledge the information contained within. Failure to return the attached card may result in a voided warranty.



**1051 West 7th Street
 Monroe, WI 53566
 608-328-8127 ~ Fax: 608-328-4278**

Warranty Policy Uninstalled Parts and Equipment Provided by Monroe Truck Equipment

Monroe Truck Equipment will provide the following limited warranty for a period of one year to the original purchaser of all uninstalled goods provided by Monroe Truck Equipment:

LIMITED WARRANTY: All goods provided by Monroe Truck Equipment (MTE) will be free from defects in material and workmanship for a period of one year from the date of purchase by the original purchaser. This limited warranty shall be the sole and exclusive remedy for any such product found to be defective. This limited warranty supercedes all previous warranties and is exclusive and in lieu of all other warranties, whether expressed or implied.

This limited warranty applies only to parts or accessories manufactured by MTE and/or provided by same. Except with respect to title, this limited warranty does not pertain to parts or accessories not manufactured and/or provided by MTE, regardless of whether such parts or accessories were selected and/or recommended by MTE. MTE will, as a service to the buyer, pass on any warranties received from the original manufacturer of MTE provided parts and/or accessories.

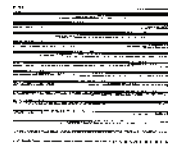
MTE will not under any circumstances be liable for any incidental or consequential damages whether in tort, contract, or otherwise, for any bodily injury, death, property damage, loss of use, or loss of income resulting from or in any way arising out of any goods provided by MTE, or their sale, use, or manufacture.

Any warranty claim deemed to be arising from the result of misuse, abuse, neglect, accident, improper installation, lack of maintenance, act of war (whether declared or otherwise), or act of God will be denied. Any repair or modification by the buyer or any third party, without the prior written consent of MTE, will void any possible warranty compensation. Any damage deemed to be the result of abnormal operation will not be compensated by this warranty.

Normal or special maintenance items such as fuels, fluids, tires, belts, hoses, filters, air cleaners, light bulbs, and any other items subject to normal wear and tear that are supplied in connection with goods provided by MTE are not allowed under this warranty.

All engines, pumps, cylinders, valves, and motors are warranted by their manufacturer and not by Monroe Truck Equipment. The manufacturer's warranty will apply to these parts. Electrical and hydraulic components are not to be disassembled without the express written consent of MTE. Any disassembly of MTE provided components without prior authorization will void the applicable warranty.

Monroe Truck Equipment shall be the sole and final determining authority as it applies to the administration of this warranty policy. Purchaser acknowledges receipt of Monroe Truck Equipment Warranty Policy and agrees to be bound by same.



GLOBAL SOLUTIONS
 ARMORED VEHICLES ~ SPORT TRUCK CONVERSIONS
 MUNICIPAL SNOW & ICE CONTROL ~ FIRE APPARATUS
 PICKUP TRUCK ACCESSORIES ~ TRUCK EQUIPMENT/MODIFICATIONS



**1051 West 7th Street
 Monroe, WI 53566
 608-328-8127 ~ Fax: 608-328-4278**

Any and all warranty claims must be forwarded to MTE within 10 days of defect discovery. A copy of the original Monroe Truck Equipment invoice as well as the manufacturer's model number, serial number, and date of installation must accompany all correspondence regarding said claims. MTE will, at their option, choose whether to repair or replace the defective part unless otherwise specified by the original manufacturer of said part.

Procedures for Warranty Claims Notification

For submission of any warranty claim please contact Monroe Truck Equipment – Warranty Department at 800-356-8134

The following documentation will be needed when you call for initial warranty authorization:

1. A copy of the original MTE invoice.
2. Make, Model, and VIN or Serial Number of the equipment involved.
3. Part number and serial number of the part in question.
4. A complete description of the problem.

The following must accompany any claims submitted to Monroe Truck Equipment:

1. Documented photographs of any physical damage.
2. Inspection notes by MTE personnel or MTE authorized 3rd party.
3. Authorization number issued by Monroe Truck Equipment – Warranty Department.

Defective parts must be returned to Monroe Truck Equipment (freight prepaid) within 30 days of issuance of Authorization Number.

Monroe Truck Equipment reserves the right to void any warranty for failure to comply with Monroe Truck Equipment Warranty Policy.

This policy is effective October 11, 2012

