



MP45R and MP55R Plows

Service and Parts Manual



Monroe Snow & Ice Control

A Division of Monroe Truck Equipment

1051 W. 7th Street

Monroe, WI 53566

Phone: 608-328-8127

Fax: 608-329-8488

Website: www.monroetruck.com

Email: snowandicecontrol@monroetruck.com



TABLE OF CONTENTS

Safety Instructions	2
Maintenance Instructions	3-4
Replacement Parts	8-22
How to Order Parts	23
Return Policy	23
Warranty Registration	24-26

SAFETY INSTRUCTIONS

- Read all installation, safety and maintenance instructions completely before operating this equipment.
- Keep all personnel clear of moving parts while equipment is being operated.
- Do not operate a plow in need of maintenance! Repair immediately!
- While operating this equipment use common sense, use caution, be alert and be safety-conscious.



! DANGER

AVOID HIGH-PRESSURE FLUIDS

Escaping fluid under pressure can penetrate the skin causing serious injury.

Avoid the hazard by relieving pressure before disconnecting hydraulic or other lines. Tighten all connections before applying pressure.

Search for leaks with a piece of cardboard. Protect hands and body from high pressure fluids.

If an accident occurs, see a doctor immediately. Any fluid injected into the skin must be surgically removed within a few hours or gangrene may result.



CAUTION: *“Stacking” (piling) of snow with a push plow is not recommended.*

Raising the plow too high while stacking can damage the plow and mount by causing the lift arm to fold up and contact the moldboard.

Do not lift the plow more than 18” off the ground with piling and stacking snow.

Where possible, start the snow season by pushing snow as far back as possible from the area begin plowed to avoid having to move or stack it later.

MAINTENANCE INSTRUCTIONS

In Season:

- Check for loose bolts and nuts daily, and re-torque before use. (Failure to inspect equipment on a daily basis may seriously affect safety and/or efficiency.)
- Lubricate all grease fittings every ten hours of normal use and more frequently under heavy use.
- A cross over relief valve (300 GPM minimum) MUST be plumbed into the reversing circuit. The cross over relief valve pressure settings must NOT exceed 1800 PSI for 3" reversing cylinder and 1000 PSI for 4" reversing cylinder.
- Check all hydraulic fittings for tightness on a regular basis.
- System pressure should NOT exceed 2000 PSI.
- Check cutting edge for wear. Do not let cutting edge wear closer than ½" to ⅜" from the bottom angle of the moldboard.
- Due to the nature of use and environment this equipment is operating in, damage and wear may occur at anytime. Therefore, **Monroe Truck Equipment** recommends the end user establish and follow a daily inspection routine before using this equipment.

Off Season:

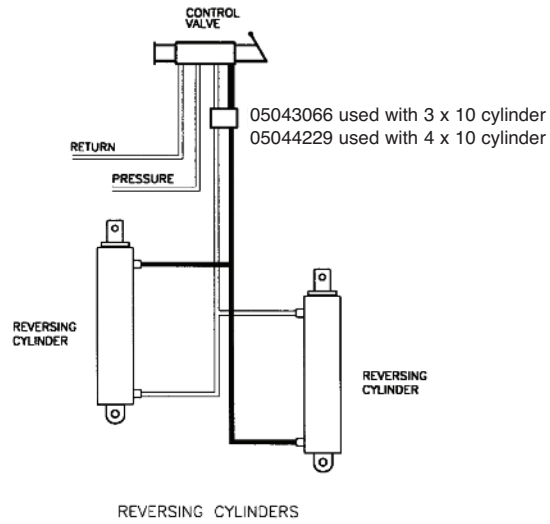
- Use care when disconnecting hydraulic lines to assure that no dirt or foreign objects enter the hydraulic system. Use caps to cover hydraulic hose fittings and insert plugs in hydraulic ports.
- Hydraulic cylinders should be fully retracted when stored during the off season to prevent damage or corrosion. The remaining exposed shaft surface should be coated with a thick grease to prevent corrosion, which must be removed before returning to regular service.
- Check mounting bolts for wear and/or damaged threads and replace before next season.

GENERAL INFORMATION

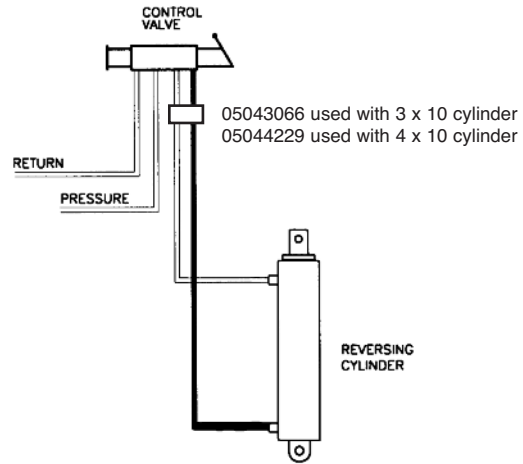
- Location descriptions are noted in direction of travel. (i.e. front, rear, left and right.)
- Delivery of replacement parts is subject to our sales delivery terms.
- Use only **Monroe Snow & Ice Control** O.E.M. replacement parts. Failure to do so will void warranty.
- Replacement parts listed in this manual reflect our most common items. If you do not find the part you require, please call your distributor.
- **Monroe Truck Equipment** reserves the right to make revisions or alterations to this parts manual.
- Monroe Full Moldboard Compression Trip Reversible plows are designed to operate with a 14” push height when equipped with the standard 8” cutting edge. Changes in cutting edge height will require adjustments at the hitch to maintain optimum attach angle.
- Monroe Full Moldboard Compression Trip Reversible plows are designed for use with a variety of hitches. Please consult the operating manual for your hitch to determine the correct attachment procedure.

HYDRAULIC DIAGRAMS

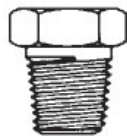
Hydraulic Diagram for the Reversing Cylinders



Single Reversing Cylinder

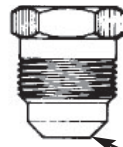


NPT (Pipe Thread)



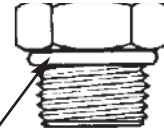
Requires pipe
thread sealant

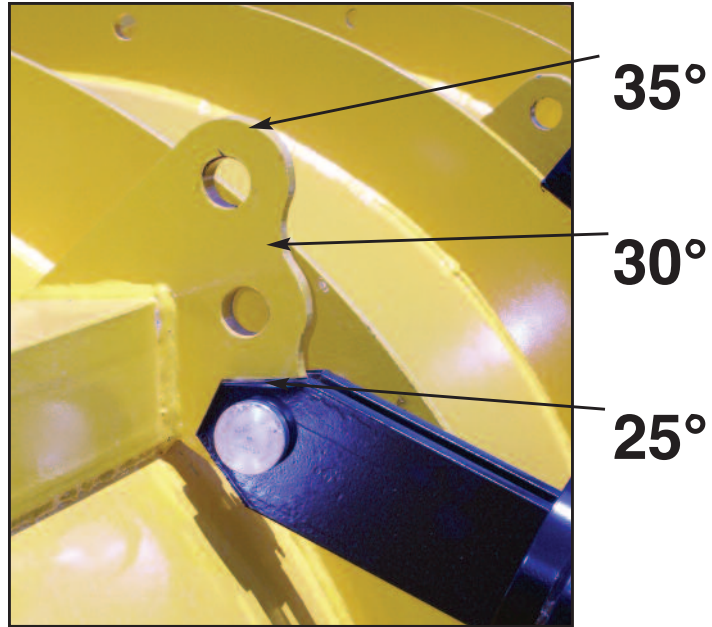
JIC (Flared)



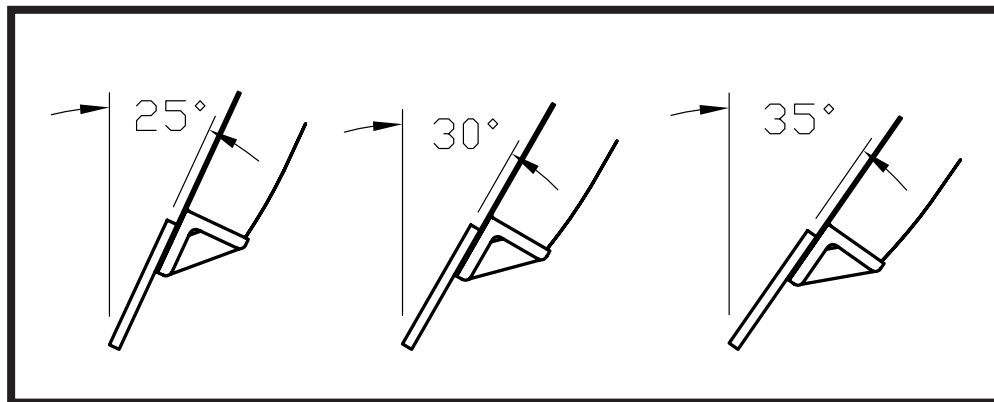
Self Sealing

ORB (O-Ring)





**Simple Three Position Adjustment for
Plow Cutting Edge Attack Angle**

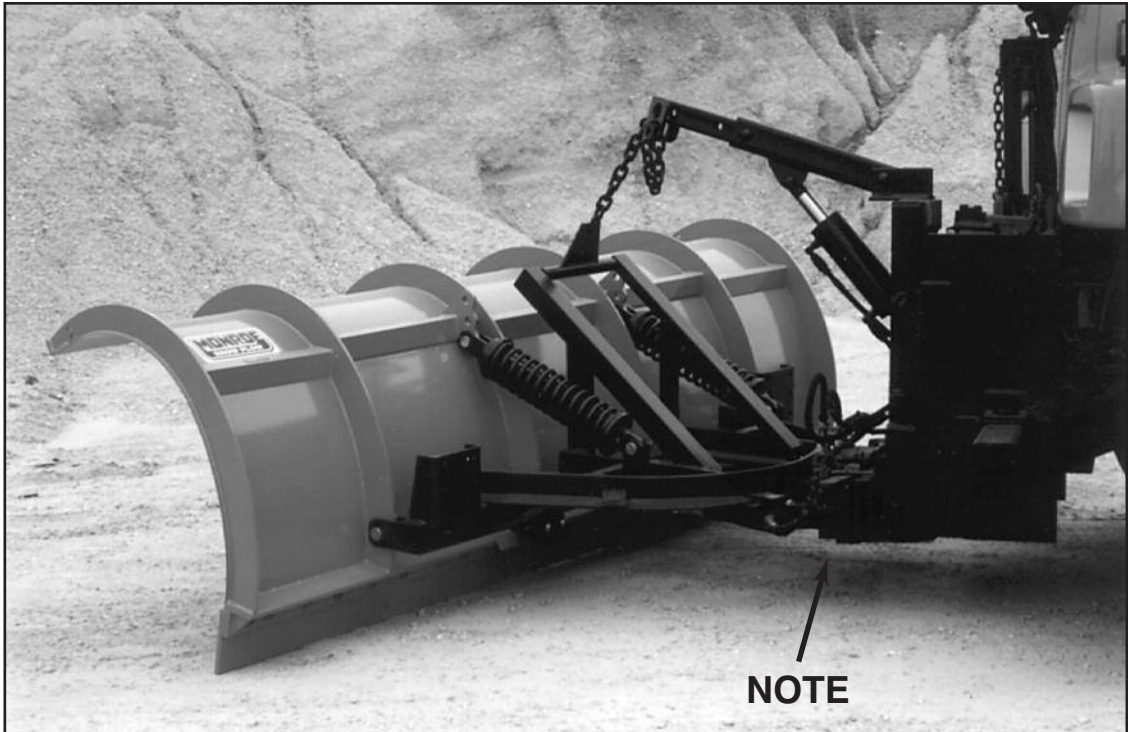


Force Required to Trip Moldboard

**LIGHT
TRIP**

**MEDIUM
TRIP**

**HARD
TRIP**



Level Lift Chain Hook-Up

1. Adjust lift arm outward so the chain lifts more vertical than rearward.
(See picture above.)
2. Adjust the lift chain until the plow lifts approximately 12" off of the ground.
(Approximately 6 to 10 links from the level lift.)

Note: The swivel plate must be lubricated in order for level lift to work properly.

MP45R & MP55R PLOWS

Item	Qty	Part Number	Description
1	1	00074688 00021503 00074686 00074687	MOLDBOARD WELDMENT, PLOW, MP45R11-ISCT, 10GA MOLDBOARD WELDMENT, PLOW, MP45R12-ISCT, 10GA MOLDBOARD WELDMENT, PLOW, MP55R11-ISCT, 10GA MOLDBOARD WELDMENT, PLOW, MP55R12-ISCT, 10GA
2	1	00049753 00049754 00055931 00055932	CUTTING EDGE KIT, 11', .625 X 8, TPCS CUTTING EDGE KIT, 12', .625 X 8, TPCS CUTTING EDGE KIT, 11', .750 X 6, CARBIDE, TPCS CUTTING EDGE KIT, 12', .750 X 6, CARBIDE, TPCS <i>See Page 9</i>
3	1	00071412	TRIP KIT, PLOW, CT, HD, 45.0, 55 <i>See Page 10</i>
4	1	00055987 00085694 00085695 00074939	PUSHFRAME KIT, RVS, 45CT, 10'-12' PUSHFRAME KIT, RVS, 55CT, 10'-12' PUSHFRAME KIT, RVS, 55CT PUSHFRAME KIT, RS, CT, 10'-12' <i>See Page 11</i> <i>See Page 12</i> <i>See Page 13</i> <i>See Page 14</i>
5	1	00050926 00050953 00066052	REVERSING KIT, PLOW, 3 X 10 CYL REVERSING KIT, PLOW, 4 X 10, CYL TILT KIT, HYD TILT PF <i>See Page 16</i> <i>See Page 17</i> <i>See Page 17</i>
6	1	05050095	TAG, SERIAL NUMBER, 1.25 X 3.5, SS
7	1	00055962	DECAL KIT, PLOW <i>See Page 18</i>

00049753 CUTTING EDGE KIT, 11', .625 X 8, TPCSK

Item	Qty	Part Number	Description
1	1	05031013	CUTTING EDGE, .625 X 8 X 11', 1084
2	13	05014551	BOLT, .625-11 X 2.50, G8, DH, PLAIN
3	13	05021383	WASHER, .625, LOCK, HEAVY, ZINC
4	13	05020270	NUT, .625-11, G8, HEX, ZINC

00049754 CUTTING EDGE KIT, 12', .625 X 8, TPCS

Item	Qty	Part Number	Description
1	1	05031014	CUTTING EDGE, .625 X 8 X 12', 1084
2	14	05014551	BOLT, .625-11 X 2.50, G8, DH, PLAIN
3	14	05021383	WASHER, .625, LOCK, HEAVY, ZINC
4	14	05020270	NUT, .625-11, G8, HEX, ZINC

00055931 CUTTING EDGE KIT, 11', .75 X 6, CARBIDE, TPCS

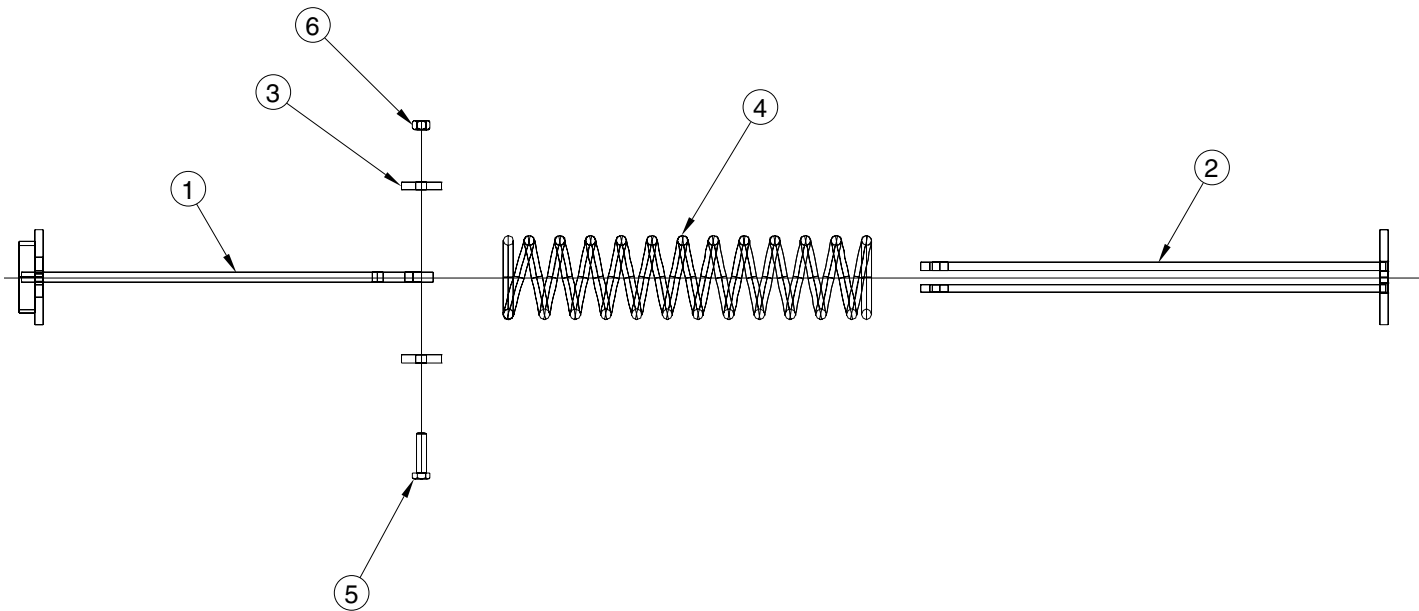
Item	Qty	Part Number	Description
1	1	05031082	CUTTING EDGE, 3', .75 X 6, CARBIDE, TPCS
2	2	05021083	CUTTING EDGE, 4', .750 X 6, CARBIDE, TPCS
3	1	05031031	CUTTING EDGE, 11', .5 X 6, TPCS
4	17	05014553	BOLT, .625-11 X 3, G8, DH, PLAIN
5	17	05021383	WASHER, .625, LOCK, HEAVY, ZINC
6	17	05020270	NUT, .625-11, G8, HEX, ZINC

00055932 CUTTING EDGE KIT, 12', .75 X 6, CARBIDE, TPCS

Item	Qty	Part Number	Description
1	3	05031083	CUTTING EDGE, 4', .750 X 6, CARBIDE, TPCS
2	1	05031032	CUTTING EDGE, 12', .5 X 6, TPCS
3	14	05014553	BOLT, .625-11 X 3, G8, DH, PLAIN
4	18	05021383	WASHER, .625, LOCK, HEAVY, ZINC
5	18	05020270	NUT, .625-11, G8, HEX, ZINC
6	4	05014551	BOLT, .625-11 X 2.5, G8, DH, PLAIN

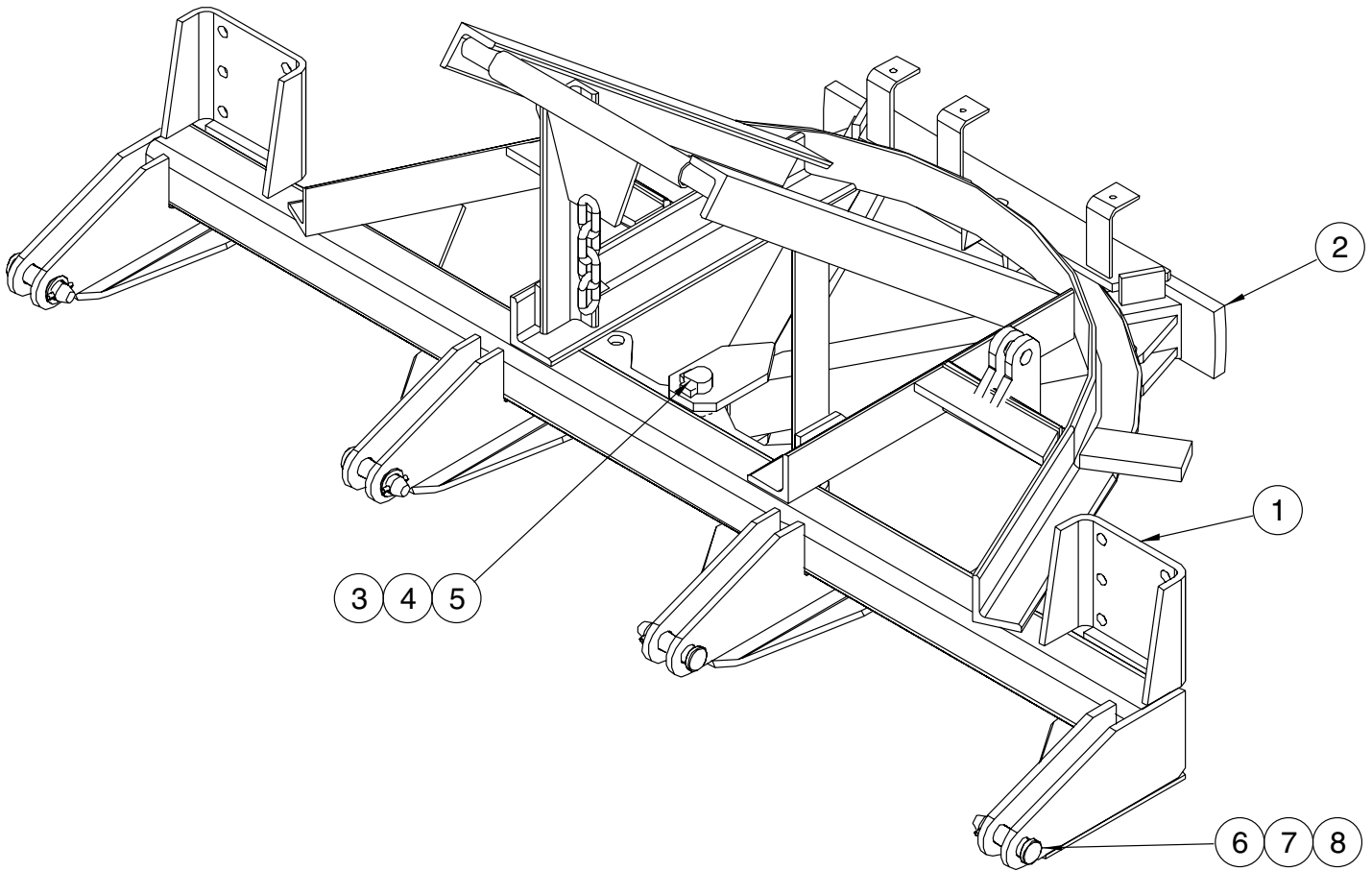
00071412 TRIP KIT, PLOW, CT, HD, 45, 55

Item	Qty	Part Number	Description
1	2	00071413	COMPRESSION SPRING ASSEMBLY, HD, 45, 55 <i>See Below</i>
2	4	05022051	PIN, 1DIA X 3.25, FLAT, HD
3	4	05021202	BUSHING, 1.50 X 1 X 10GA, ZINC
4	4	05022026	PIN, .25 X 2, ROLL, ZINC



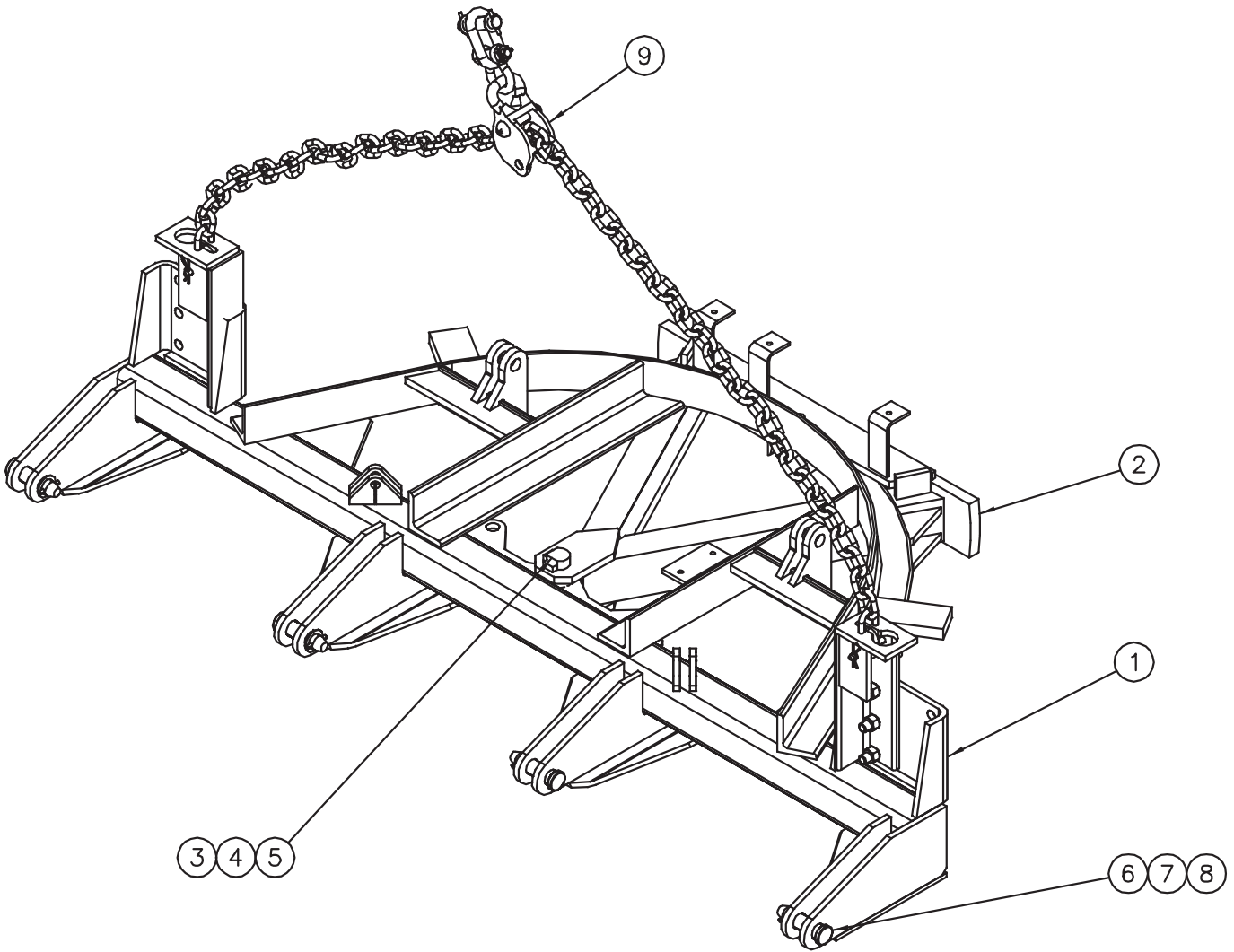
00071413 SPRING ASSEMBLY, PLOW, COMPRESSION, HD, 45, 55

Item	Qty	Part Number	Description
1	1	00040164	SPRING BRACKET, UPPER
2	1	00055969	COMPRESSION SPRING BRACKET, LOWER
3	2	00040167	RETAINER
4	1	05035037	SPRING, COMPRESSION, HD
5	1	05010741	BOLT, .625-11 X 2.50, HHCS, G8, ZINC
6	1	05020837	NUT, .625-11, GC, TOP LOCK, C&W



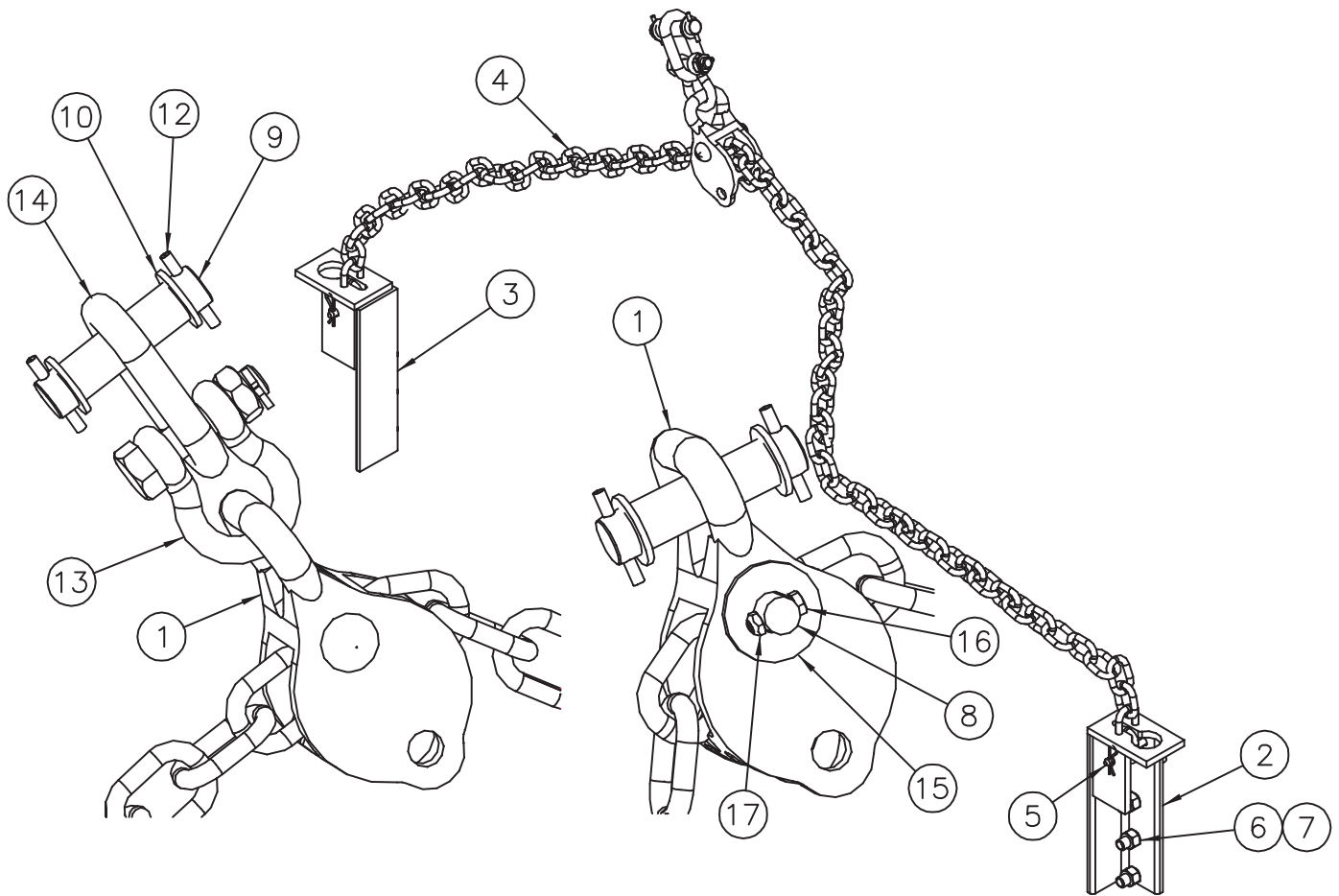
00055987 PUSHFRAME KIT, RVS, 45CT, 10'-12'

Item	Qty	Part Number	Description
1	1	00055986	PUSHFRAME WELDMENT, 10'-12', LL
2	1	00027881	STANDARD A FRAME WELDMENT
3	1	05022047	PIN, 1.250 X 7.25, FLAT, HD
4	1	05022044	PIN, .313 X 3, ROLL
5	1	05021316	WASHER, 1.25, G5, FLAT, ZINC
6	4	05022067	PIN, FLAT, HD, 1.25 DIA X 4.50
7	4	05022039	PIN, .313 X 2, ROLL
8	4	05021191	BUSHING, 1.25 MACHINE, ZINC



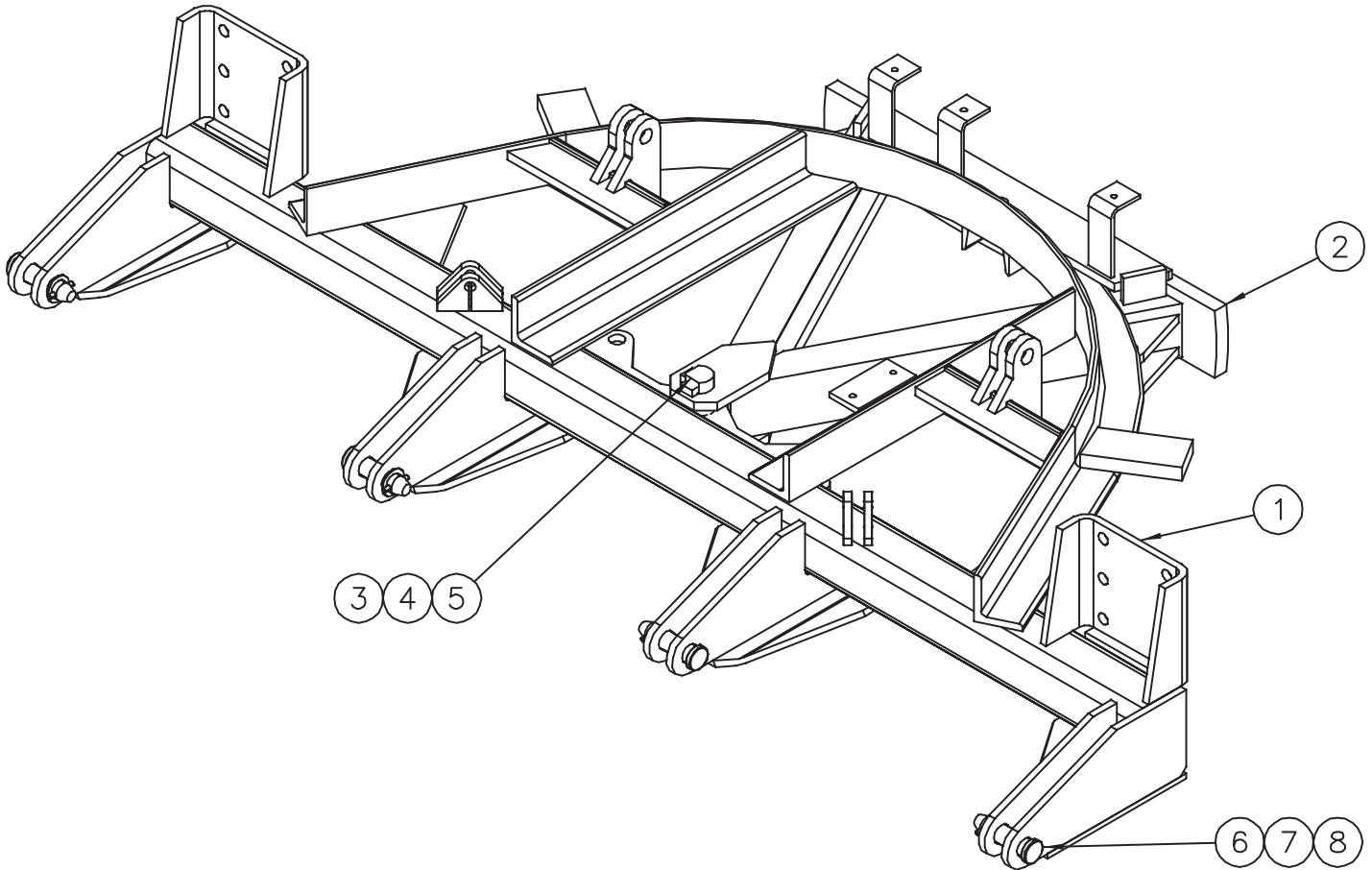
00085694 PUSHFRAME KIT, RVS, 55CT, 10'-12'

Item	Qty	Part Number	Description
1	1	00027833	PUSHFRAME WELDMENT, RVS, 10'-12', ATCH PTS, CHAIN LIFT, FALLS
2	1	00027881	A-FRAME WELDMENT, STD, 1.25 PIVOTS, 1 X 5
3	1	05022047	PIN, 1.25 X 6.438 FLAT HD, ZINC, CHAMFERED HD, W/ HOLES
4	1	05022044	PIN, .313 X 3, ROLL, ZINC, CARBON SPRING STEEL
5	1	05021316	WASHER, 1.25, FLAT, ZINC
6	4	05022067	PIN, 1.242, 4.835, FLAT, HEAD, ZINC, GRIP
7	4	05022039	PIN, .313 X 2, ROLL ZINC, CARBON SPRING STEEL
8	4	05021191	BUSHING, MACH, 1.88 X 1.25 X 14GA, ZINC, NARROW, RIM
9	1	00085695	LIFT KIT, PLOW, BLOCK & CHAIN, 55CT



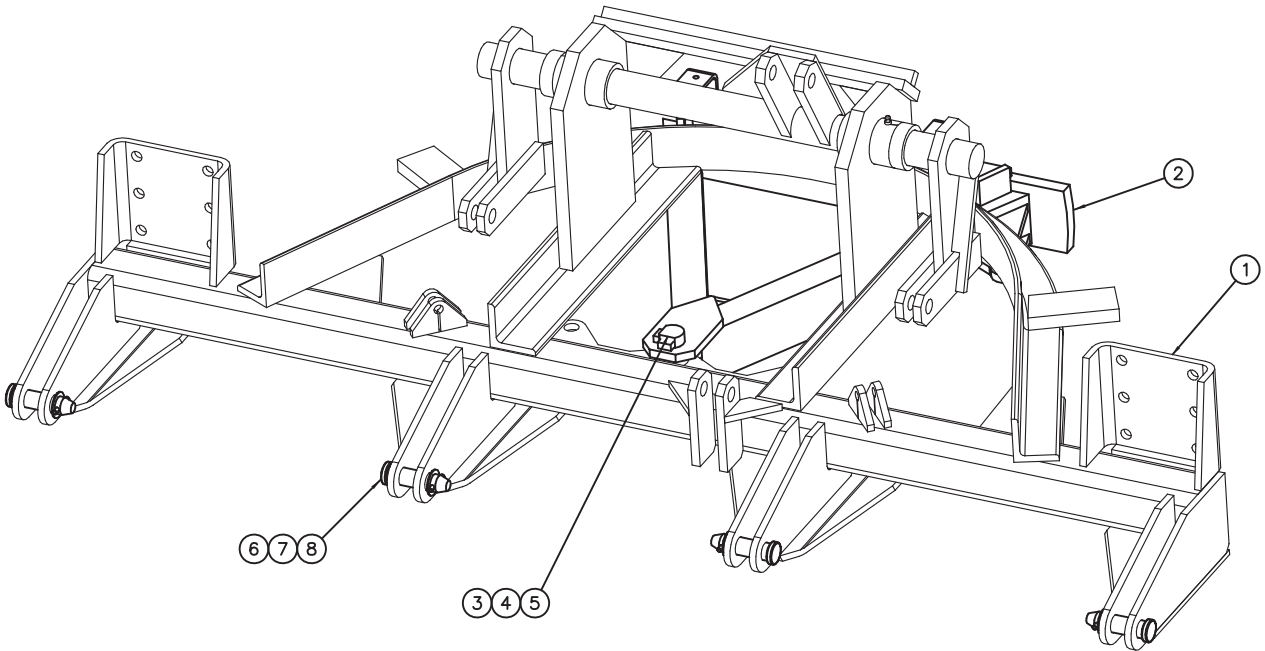
00085695 LIFT KIT, PLOW, BLOCK & CHAIN, 55CT

Item	Qty	Part Number	Description
1	1	05034025	BLOCK, CHAIN, CASTING CONTINUOUS CHAIN PLOW LIFT
2	1	00036995	BRACKET WELDMENT, LH, CHAIN ATCH PUSHFRAME
3	1	00036996	BRACKET WELDMENT, RH, CHAIN ATCH PUSHFRAME
4	1	00043175	CHAIN, HIGHT TEST, GR43, .5 X 10', 120", ZINC PLATED, DOMESTIC
5	2	05022136	PIN, .5 X 4.50, 4" GRIP BENT, ZINC, INCL BRIDGE PIN
6	6	05010765	BOLT, .750-10 X 2.25, G8, HHCS, ZINC
7	6	05020271	NUT, .750-10, G8, HEX, ZINC
8	1	05022119	PIN, .75 X 3.75, BUTTON HEAD, ZINC PLATED, CT EDGE
9	1	05022040	PIN, 1 X 4.25 NO HEAD, ZINC
10	2	05021202	BUSHING, MACH, 1.5 X 1 X 10GA, ZINC, NARROW, RIM
11	1	05022002	PIN, #8 HAIR, .875"-1" PIN, .178 WIRE, 3.750 LONG, 21-08
12	1	05022026	PIN, .250 X 2, ROLL ZINC, CARBON SPRING STEEL
13	1	05050126	SHACKLE, .625, BOLT-TYPE, GALV, ANCHOR, 3.25 TON LIMIT
14	1	05052606	END LINK, .750"
15	1	05021312	WASHER, .750, FLAT, ZINC
16	1	05010593	BOLT, .250-20 X 1, G8, HHCS, ZINC
17	1	05020899	NUT, .250-20, TOP LOCK, ZINC

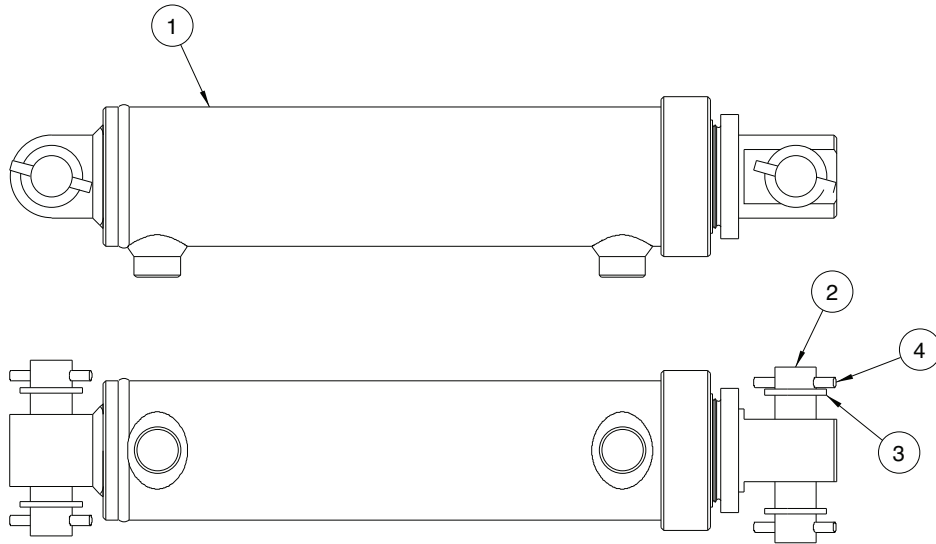


00074939 PUSHFRAME KIT, REV, CT, 10'-12'

Item	Qty	Part Number	Description
1	1	00027833	PUSHFRAME WELDMENT, REV, 11' & 12', 4 ATCH PTS, CHAIN LIFT, FALLS
2	1	00027881	STD A-FRAME WELDMENT
3	1	05022047	PIN, 1.250 X 7.25, FLAT, HD
4	1	05022044	PIN, .313 X 3, ROLL
5	1	05021316	WASHER, 1.25 G5, FLAT, ZINC
6	4	05022067	PIN, FLAT, HD, 1.25 DIA X 4.50
7	4	05022039	PIN, .313 X 2, ROLL
8	4	05021191	BUSHING, 1.25, MACHINE, ZINC



00157345 PUSHFRAME KIT, RVS, 55CT, 10'-12'			
ITEM	QTY	PART NUMBER	DESCRIPTION
1	1	00081373	PUSHFRAME WLDMT,RVS,55CT,10'-
2	1	00028551	A-FRAME WLDMT,2.00 PIVOT,1x5
3	1	05022047	PIN 1.25 x 6.438 FLAT HD ZC
4	1	05022044	PIN .313 x 3.000 ROLL
5	1	05021316	WASHER 1.25 FLAT ZC
6	4	05022067	PIN 1.242 x 3.370GL x 4.835,ZC
7	4	05022039	PIN, ROLL .313 x 2.000 OA
8	4	05021191	BUSHING,MACH,1.88x1.25x14GA,ZC



00050926 REVERSING KIT, PLOW, 3 X 10 CYLINDER W/ MOUNTING HARDWARE

Item	Qty	Part Number	Description
1	2	05000000	CYLINDER, 3 X 10 DA, LIFT PA, ORB PORTS <i>See Page 19</i>
2	4	05022040	PIN, 1 X 4.250, NO HEAD
3	8	05021202	BUSHING, 1.50 X 1 X 10GA, ZINC, NARROW
4	8	05022026	PIN, .250 X 2, ROLL, ZINC
5	1	05043067	HOSE KIT, CUSHION BLOCK, .875ORB
6	1	05037080	HOSE ASSEMBLY, PLOW, MTE W/R608
7	3	00055000	CLIP, HOSE HOLD DOWN, REVERSIBLE PLOW, MTE
8	3	05010620	BOLT, .313-18 X 1.50, G8, HHCS, ZINC
9	3	05020909	NUT, .313-18, GC, TOP LOCK, C&W
10	6	05050608	CABLE TIE, HD, 14.0"L X .300"W, BLACK

00050953 REVERSING KIT, PLOW, 4 X 10 CYL W/ MOUNTING HARDWARE

Item	Qty	Part Number	Description
1	2	05002640	CYLINDER, 4 X 10, DA, NIT, RVS <i>See Page 20</i>
2	4	05022040	PIN, 1 X 4.25 NO HEAD, ZINC
3	8	05021202	BUSHING, MACH, 1.5 X 1 X 10GA, ZINC
4	8	05022026	PIN, .250 X 2, ROLL, ZINC
5	1	05044230	HOSE KIT, CUSHION BLOCK @ 1000 PSI
6	1	05037080	HOSE KIT, PLOW, STD W/ 36" WHIP
7	3	00055000	CLIP, HOSE HOLD DOWN
8	3	05010620	BOLT, .313-18 X 1.50, G8, HHCS, ZINC
9	3	05020909	NUT, .313-18, GC, TOP LOCK, C&W
10	6	05050608	CABLE TIE, HD, 14L X .3W, BLACK

00066052 TILT KIT, 4X10 CYLINDER, NIT, HYD TILT PUSHFRAME

Item	Qty	Part Number	Description
1	1	00037392	CYLINDER, 4X10, HYD ADJ PLOW, 20.125 CC X 26.38 CC EXT, NIT <i>(Use replacement parts for cylinder #05002640 on page 20)</i>
2	1	05022001	PIN, 1" X 4.266" GL
3	1	05022040	PIN, 1" X 4.25", NO HEAD, ZINC
4	9	05021202	BUSHING, MACHINE, 1.5" X 1" X 10 GA, ZINC, NARROW RIM
5	2	05022026	PIN, .25" X 2", ROLL, ZINC, CARBON SPRING STEEL°



⚠ WARNING

Possible serious injury and equipment damage from loosening of equipment fasteners. Fasteners on snow and ice removal equipment may loosen due to vibration and repetitive movements.

Retighten all equipment mounting fasteners after the first 8 hours of use, then check tightness weekly after that. Use a torque wrench when specific torque values are given in the installation manual.

If fasteners need to be replaced, be certain to use the correct size, grade and type to prevent failure.

05052628

⚠ WARNING

Springs under tension! If spring releases while performing maintenance, serious injury or death could result. Use caution when working in area.

IF DEFACED - ORDER PART NO. 05052547

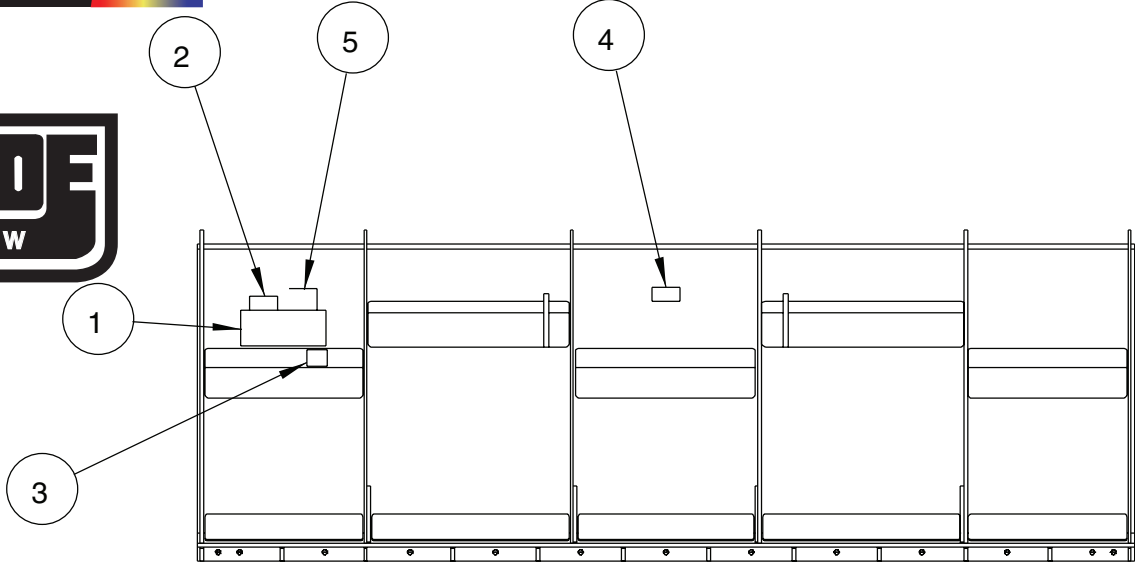


MONROE
SNOW & ICE CONTROL

QUALITY CHECK

Inspected by:

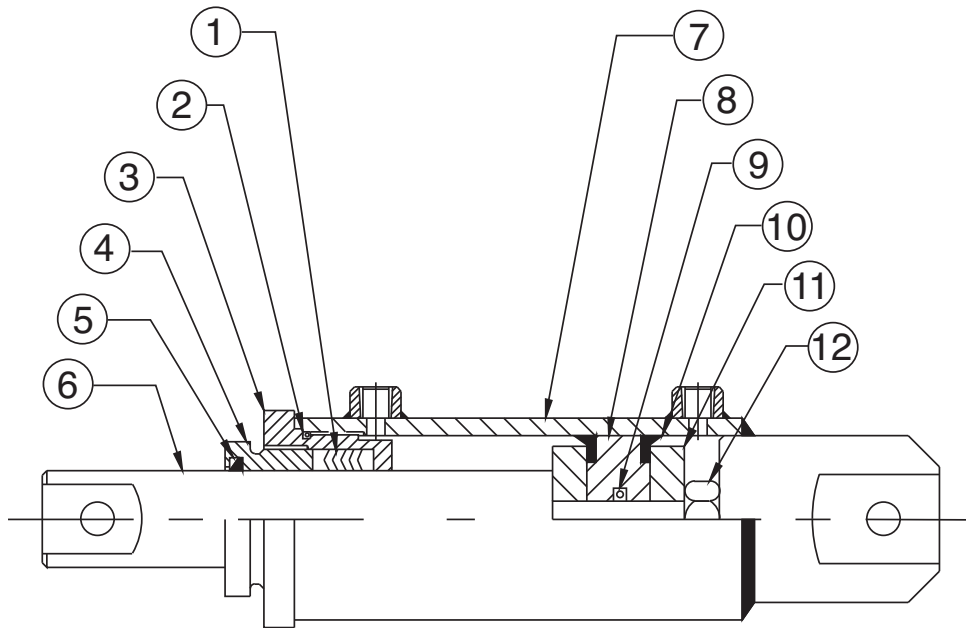
1 0505231



00055962 DECAL KIT, PLOW			
Item	Qty.	Part Number	Description
1	1	05051507	DECAL, MONROE SNOWPLOW, 12x5
2	1	05050681	DECAL, 4" x 2", BONDED POWDER
3	1	05052311	DECAL, 4" X 3" QUALITY CHECK
4	1	05052547	DECAL, WARNING SPRINGS UNDER TENSION
5	1	05052628	DECAL, WARNING, TIGHTEN FASTENERS

05000000 CYLINDER, 3 X 10, DA, NITRIDED ROD & POLY PAK

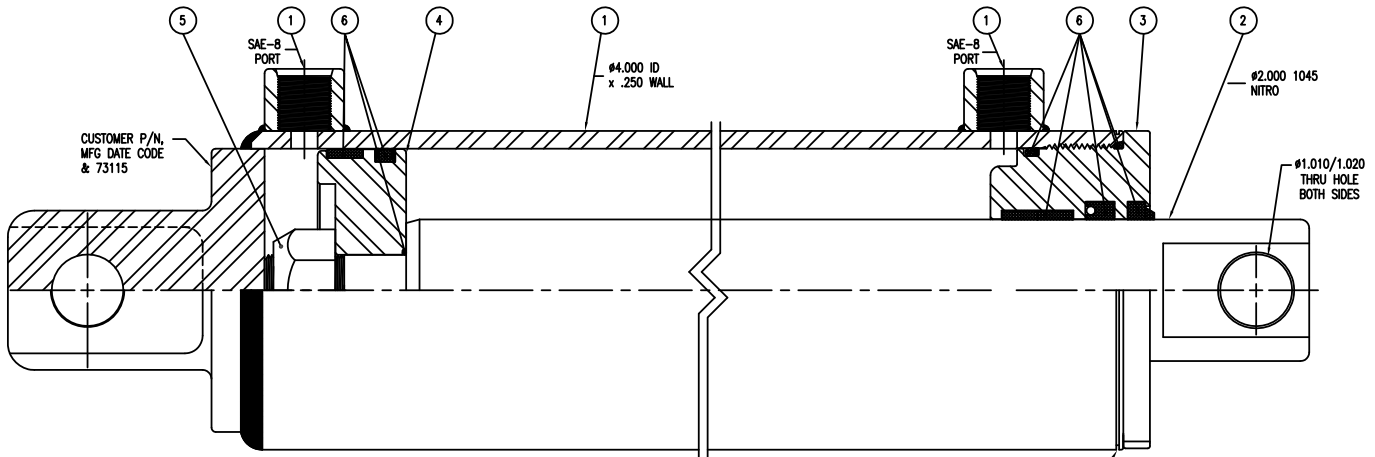
<i>BEST METAL</i>	ITEM	QTY	PART #	DESCRIPTION
	1	1	05000001	PACKING SET
	2	1	05000002	O-RING
	3	1	05000006	BOX
	4	1	05000007	NUT
	5	1	05000003	WIPER
	6	1	05000008	ROD
	7	1	05000014	TUBE
	8	1	05000010	PISTON
	9	1	05000004	O-RING
	10	2	05000005	CUP
	11	2	05000011	FOLLOWER
	12	1	05000012	NUT
	13	1	05000013	SEAL KIT

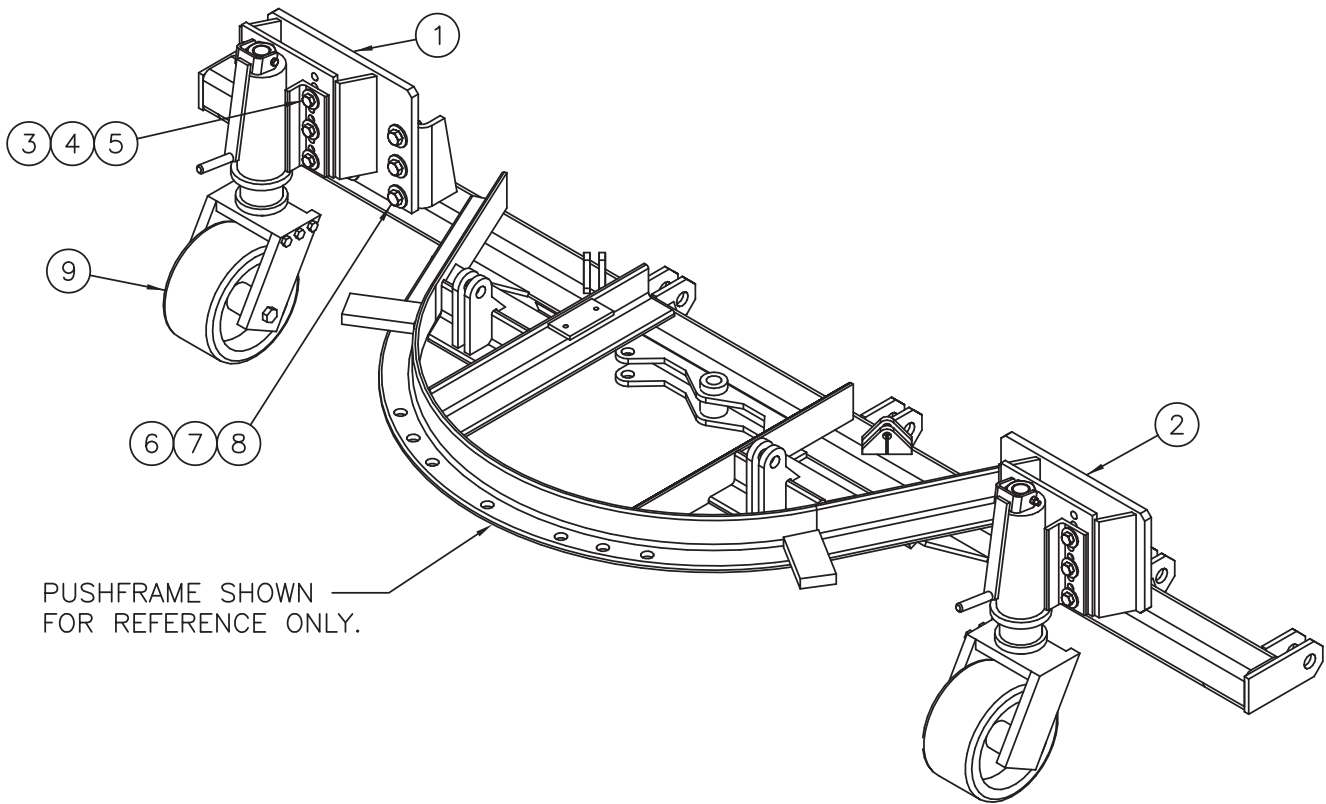


05002640 CYLINDER, 4 X 2 X 10 STROKE DA

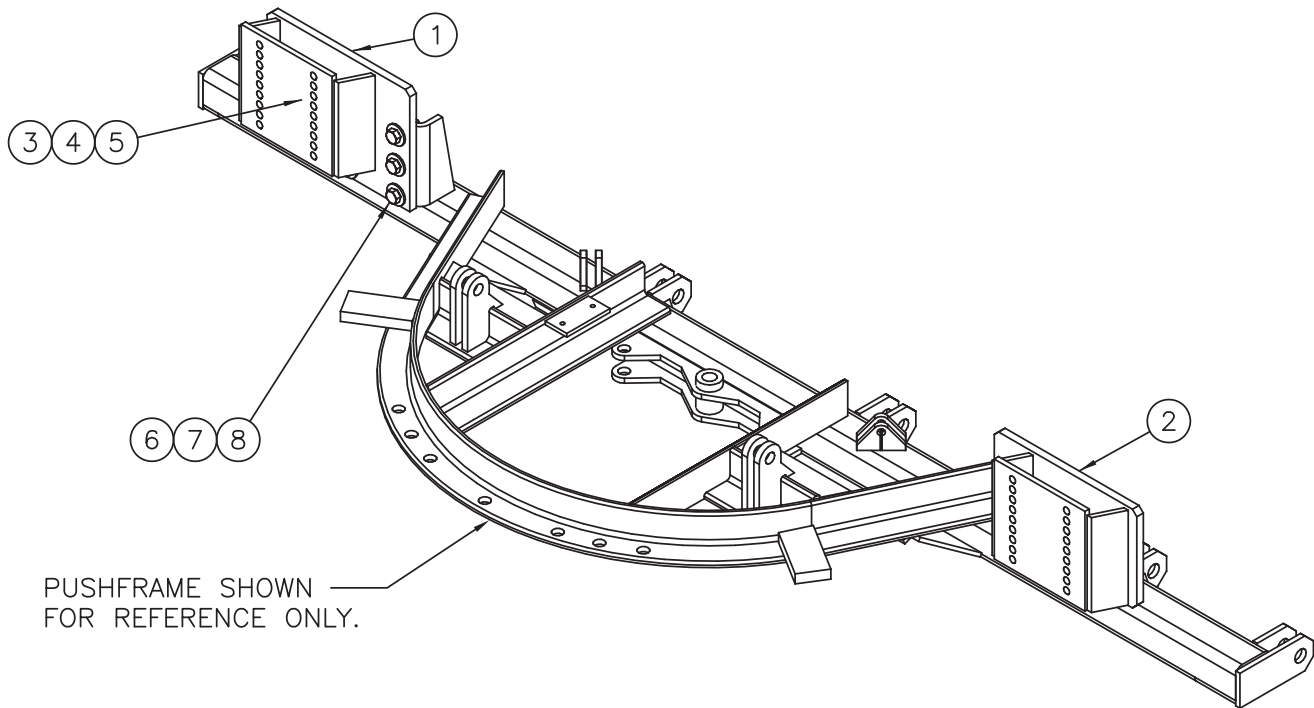
DIREKT FORCE

PART #	DESCRIPTION
---	BODY SUB-ASSEMBLY
---	ROD
---	GLAND
05003366	PISTON
05003240	HARDWARE KIT
05003265	SEAL KIT





00149801 SNOW WHEEL KIT, RVS,4, 5, 6 ATCH 10'-12', W/ SNOW WHEEL			
ITEM	QTY	PART NUMBER	DESCRIPTION
1	1	00148093	EXT PL WLDMT,LH,SNOW WHEEL,
2	1	00148094	EXT PL WLDMT,RH,SNOW WHEEL,
3	12	05010739	BOLT .625-11 x 2.00 G8 HHCS ZC
4	12	05020837	NUT .625-11 GC TOPLOCK C&W
5	24	05021311	WASHER .625 FLAT ZC
6	12	05010766	BOLT .750-10 x 2.50 G8 HHCS ZC
7	12	05020849	NUT .750-10 GC TOPLOCK C&W
8	24	05021312	WASHER .750 FLAT ZC
9	2	05050762	WHEEL,SWIVEL W/ADJUSTER,6509



00148092 SNOW WHEEL KIT, RVS, 4, 5, 6 ATCH, 10'-12', W/O SNOW WHEELS

ITEM	QTY	PART NUMBER	DESCRIPTION
1	1	00148093	EXT PL WLDMT,LH,SNOW WHEEL,
2	1	00148094	EXT PL WLDMT,RH,SNOW WHEEL,
3	12	05010739	BOLT .625-11 x 2.00 G8 HHCS ZC
4	12	05020837	NUT .625-11 GC TOPLOCK C&W
5	24	05021311	WASHER .625 FLAT ZC
6	12	05010766	BOLT .750-10 x 2.50 G8 HHCS ZC
7	12	05020849	NUT .750-10 GC TOPLOCK C&W
8	24	05021312	WASHER .750 FLAT ZC

HOW TO ORDER PARTS

To order or inquire about replacement parts, please contact the distributor or store that the product was purchased through. To speed the information flow, please have the follow information ready:

- Model Number
- Serial Number
- Part Number and/or description as per the parts manual
- Quantity needed

For further information about **Monroe Truck Equipment** replacement parts, please call 800-880-0109 and ask for **Snow & Ice Parts Sales**.

RETURN POLICY

Merchandise returned to **Monroe Truck Equipment** must have a Warranty Service Request (WSR) form filled out completely and signed by authorized personnel. To get your WSR form, call 800-880-0109. For whole goods, ask for **Snow & Ice Sales**. For replacement parts, ask for **Snow & Ice Parts Sales**. All returned items are subject to a 15% restocking fee and must be sent freight prepaid!

MONROE TRUCK EQUIPMENT, INC. WARRANTY SNOW & ICE CONTROL PRODUCTS

Monroe Truck Equipment, Inc. warrants to the original purchaser, that if any part of the product proves to be defective in workmanship or material within **ONE YEAR** of the original installation, and is returned to us within 30 days of the discovered defect, we will (at our option) repair or replace the defective part. This warranty does not apply to damage resulting from misuse, neglect, accident, improper installation, normal wear items or lack of maintenance. This warranty is exclusive and supersedes all other warranties, whether expressed or implied. **Monroe Truck Equipment, Inc.** neither assumes, nor authorizes anyone to assume for it, any other obligation or liability in connection with this warranty and will not be liable for consequential damages.

All engines, pumps, motors, cylinders and valves are warranted by their manufacturer and not by **Monroe Truck Equipment, Inc.**. The manufacturer's warranty will apply to these parts. Electrical and hydraulic components are not to be disassembled without the express written permission of Monroe Truck Equipment. Use of replacement parts other than original equipment voids this warranty.

All defective parts returned must be accompanied by the model number, serial number, date installed, date of defect, description of defect, and the name of the distributor from whom it was purchased. All warranty claims must have prior written approval from **Monroe Truck Equipment, Inc.**

Please return the warranty registration card that accompanies this manual to confirm receipt of this parts catalog and acknowledge the information contained within. Failure to return the attached card may result in a voided warranty.



1051 West 7th Street
Monroe, WI 53566
608-328-8127 ~ Fax: 608-328-4278

Warranty Policy

Uninstalled Parts and Equipment Provided by Monroe Truck Equipment

Monroe Truck Equipment will provide the following limited warranty for a period of one year to the original purchaser of all uninstalled goods provided by Monroe Truck Equipment:

LIMITED WARRANTY: All goods provided by Monroe Truck Equipment (MTE) will be free from defects in material and workmanship for a period of one year from the date of purchase by the original purchaser. This limited warranty shall be the sole and exclusive remedy for any such product found to be defective. This limited warranty supercedes all previous warranties and is exclusive and in lieu of all other warranties, whether expressed or implied.

This limited warranty applies only to parts or accessories manufactured by MTE and/or provided by same. Except with respect to title, this limited warranty does not pertain to parts or accessories not manufactured and/or provided by MTE, regardless of whether such parts or accessories were selected and/or recommended by MTE. MTE will, as a service to the buyer, pass on any warranties received from the original manufacturer of MTE provided parts and/or accessories.

MTE will not under any circumstances be liable for any incidental or consequential damages whether in tort, contract, or otherwise, for any bodily injury, death, property damage, loss of use, or loss of income resulting from or in any way arising out of any goods provided by MTE, or their sale, use, or manufacture.

Any warranty claim deemed to be arising from the result of misuse, abuse, neglect, accident, improper installation, lack of maintenance, act of war (whether declared or otherwise), or act of God will be denied. Any repair or modification by the buyer or any third party, without the prior written consent of MTE, will void any possible warranty compensation. Any damage deemed to be the result of abnormal operation will not be compensated by this warranty.

Normal or special maintenance items such as fuels, fluids, tires, belts, hoses, filters, air cleaners, light bulbs, and any other items subject to normal wear and tear that are supplied in connection with goods provided by MTE are not allowed under this warranty.

All engines, pumps, cylinders, valves, and motors are warranted by their manufacturer and not by Monroe Truck Equipment. The manufacturer's warranty will apply to these parts. Electrical and hydraulic components are not to be disassembled without the express written consent of MTE. Any disassembly of MTE provided components without prior authorization will void the applicable warranty.

Monroe Truck Equipment shall be the sole and final determining authority as it applies to the administration of this warranty policy. Purchaser acknowledges receipt of Monroe Truck Equipment Warranty Policy and agrees to be bound by same.



GLOBAL SOLUTIONS
ARMORED VEHICLES ~ SPORT TRUCK CONVERSIONS
MUNICIPAL SNOW & ICE CONTROL ~ FIRE APPARATUS
PICKUP TRUCK ACCESSORIES ~ TRUCK EQUIPMENT/MODIFICATIONS





1051 West 7th Street
Monroe, WI 53566
608-328-8127 ~ Fax: 608-328-4278

Any and all warranty claims must be forwarded to MTE within 10 days of defect discovery. A copy of the original Monroe Truck Equipment invoice as well as the manufacturer's model number, serial number, and date of installation must accompany all correspondence regarding said claims. MTE will, at their option, choose whether to repair or replace the defective part unless otherwise specified by the original manufacturer of said part.

Procedures for Warranty Claims Notification

For submission of any warranty claim please contact Monroe Truck Equipment – Warranty Department at 800-356-8134

The following documentation will be needed when you call for initial warranty authorization:

1. A copy of the original MTE invoice.
2. Make, Model, and VIN or Serial Number of the equipment involved.
3. Part number and serial number of the part in question.
4. A complete description of the problem.

The following must accompany any claim submitted to Monroe Truck Equipment:

1. Documented photographs of any physical damage.
2. Inspection notes by MTE personnel or MTE authorized 3rd party.
3. Authorization number issued by Monroe Truck Equipment – Warranty Department.

Defective parts must be returned to Monroe Truck Equipment (freight prepaid) within 30 days of issuance of Authorization Number.

Monroe Truck Equipment reserves the right to void any warranty for failure to comply with Monroe Truck Equipment Warranty Policy.

This policy is effective October 11, 2012

