



Spreader

MS88-RS & MS96-RS

Installation and Parts Manual



Monroe Snow & Ice Control Division
1051 W. 7th Street
Monroe, WI 53566
Phone: 608-328-8127
Fax: 608-329-8488

05051812
11/14/2012

TABLE OF CONTENTS

SAFETY INSTRUCTIONS	Page 2
INSTALLATION INSTRUCTIONS	Page 3-11
OPERATING	Page 12-14
TORQUE CHART	Page 15
GENERAL INFORMATION	Page 15
REPLACEMENT PARTS	Page 16-47
HOW TO ORDER PARTS	Page 48
RETURN POLICY	Page 48
WARRANTY INFORMATION	Page 49-51

SAFETY INSTRUCTIONS

- Read all installation, safety and maintenance instructions completely before operating this equipment
- Keep all personnel clear of moving parts while equipment is being operated.
- Do not operate equipment in need of maintenance! Repair immediately!
- While operating this equipment, use common sense, use caution, be alert and be safety-conscious.



! DANGER

AVOID HIGH-PRESSURE FLUIDS

Escaping fluid under pressure can penetrate the skin causing serious injury.

Avoid the hazard by relieving pressure before disconnecting hydraulic or other lines. Tighten all connections before applying pressure.

Search for leaks with a piece of cardboard. Protect hands and body from high pressure fluids.

If an accident occurs, see a doctor immediately. Any fluid injected into the skin must be surgically removed within a few hours or gangrene may result.

INSTALLATION INSTRUCTIONS

Packing List:

Check the materials received against the order and packing list to verify that all components have been received. Some hydraulic components may be shipped direct from the manufacturer.

Position Spreader Trough:

The trough is to be mounted solidly on the rear of the dump body directly below the tailgate hardware, as close to the body as possible.

Set the tailgate in the horizontal position by pivoting it in the lower hinges and supporting it with the chains. Mark a line across the rear of the body at the lower surface of the tailgate. Raise the tailgate.

Place the spreader trough against the body just under the tailgate with the auger drive on the right side. It should be 1" below the line and against the body. The trough should be parallel to the dump body floor and centered from side to side. Verify that the trough cover and dump body tailgate may be opened and closed without interference.

Attaching Trough to Dump Body:

The trough is attached to the dump body rub rails by using the quick-detach hardware as shown in figure #2.

Sealer Strip:

If irregularities in the rear of the body cause openings between the body and the trough lip, you may want to add a 7 gauge sealer strip welded or bolted to the lip to close these gaps.

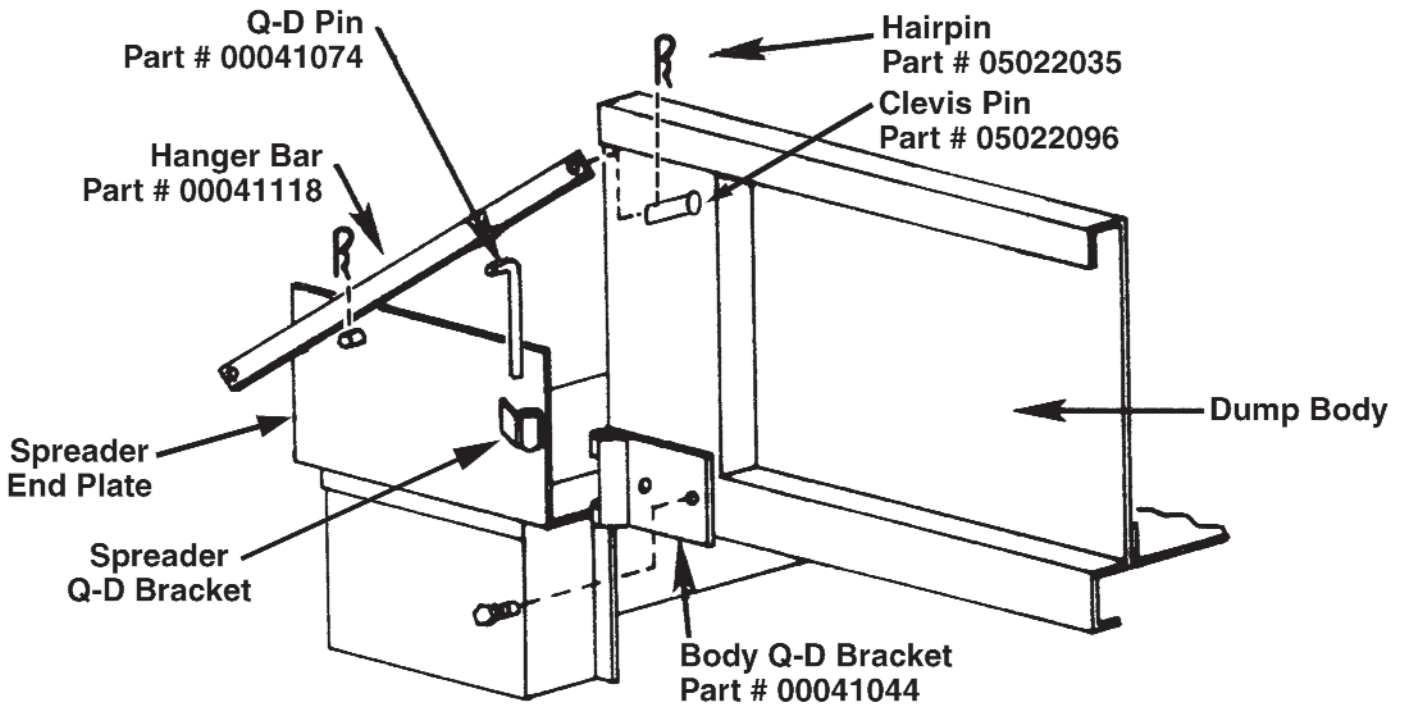
Tailgate Shields:

Bolt or weld the shields to the inside of the tailgate to prevent material spillage at the ends. See figure #1.

QUICK-DETACH HARDWARE INSTALLATION

Quick Detach Hardware Installation

1. Position spreader in desired position against rear of dump body.
2. Center body Q-D bracket on body rub rail and flush with end of body.
3. Weld or drill holes and bolt bracket to body.
4. Bolt the hanger bar to the spreader end plate. Do not tighten bolt.
5. Assembly the hanger pin bracket to the hanger bar and lock in place with hair pin keeper.
6. Moving the hanger bar, locate a good place near the top of the body for the hanger pin bracket. Weld it to the body. Tighten bolt.



INSTALLATION AND OPERATING INSTRUCTIONS FOR CHIPPING ATTACHMENT

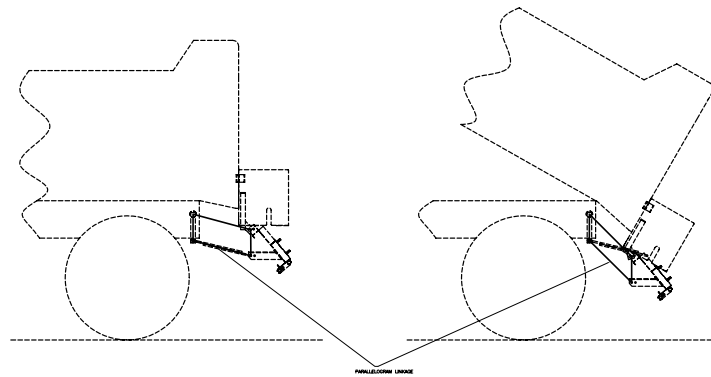
Chipping Attachment Assembly:

1. Bolt the mounting bracket weldment to the front plate of the roll spreader, flush with the front plate.
2. Mount the chipping attachment to the trough by bolting the attachment bar to the bracket weldment.

Stabilizer Bar:

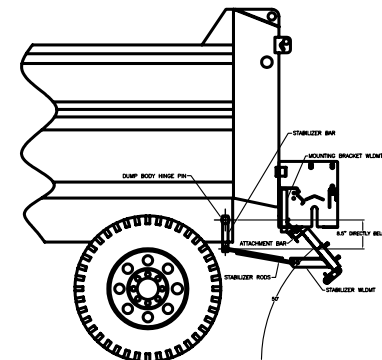
The object of the stabilizer bar is to create a parallelogram linkage between the dump body hinge pin, stabilizer bar, and the chipping attachment. This ensures that the chipping attachment will maintain a 50° angle to the road surface at any dump angle. (Reference Figure 1)

Figure 1.



1. (Reference Figure 2) Position the stabilizer bar on the chassis so that the hole is 8.5" directly below the dump body hinge pin. Weld the stabilizer bar in place.
2. (Reference Figure 2) Install one of each of the stabilizer rods in the stabilizer bar and the stabilizer weldment on the chipping attachment. Hold the chipper attachment at the 50° angle to the ground and weld the rods together. Insert the lynch pins through the stabilizer rods.

Figure 2.



HYDRAULIC SYSTEM - INSTALLATION INSTRUCTIONS

Mounting instructions for:

Thru-shaft hydraulic pump, reservoir, filter, valve and hoses (all standard truck and hydraulic spreader plumbing installations).

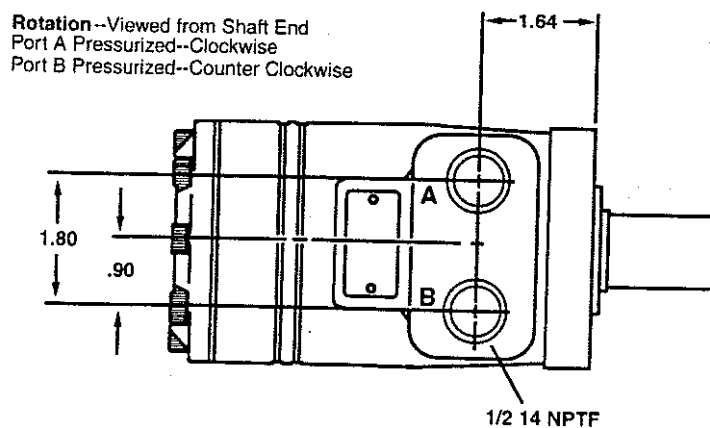
General:

The Thru-shaft pump, valve, reservoir & filter, with mounting brackets and fasteners, may be used on most any truck with an existing transmission PTO and continuously operating dump hoist pump installation.

CAUTION: *If dump body is raised for easier ump installation, it must be blocked securely before disconnecting hoist pump.*

Important:

1. Taking time to plan location of major hydraulic components will save time in further plumbing operations.
2. All pipe fittings should be cleaned before installing and all other hydraulic components to be kept as clean as possible during assembly.
3. Check rotation of PTO for proper pump mounting.
4. Pump must be mounted so shaft rotates in direction of arrow.
5. Two (2) U-Joints (one standard type and one slip type) must be used on ends of *each* piece of shafting installed in drive train.
6. Yokes on U-Joints must be in phase (lined up) for smooth operation. **CAUTION!** *All set screws in U-Joints must be tight and properly safety wired.*



PUMP INSTALLATION

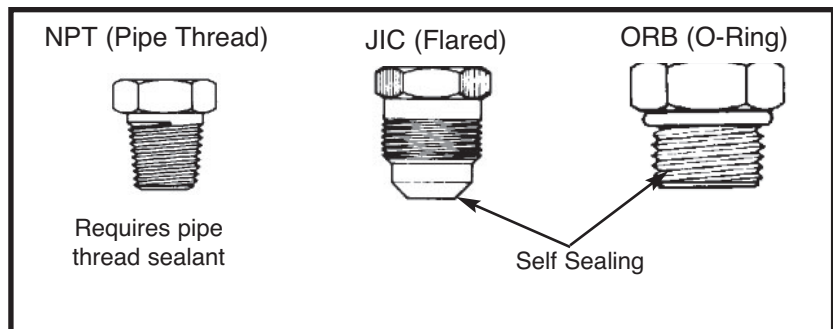
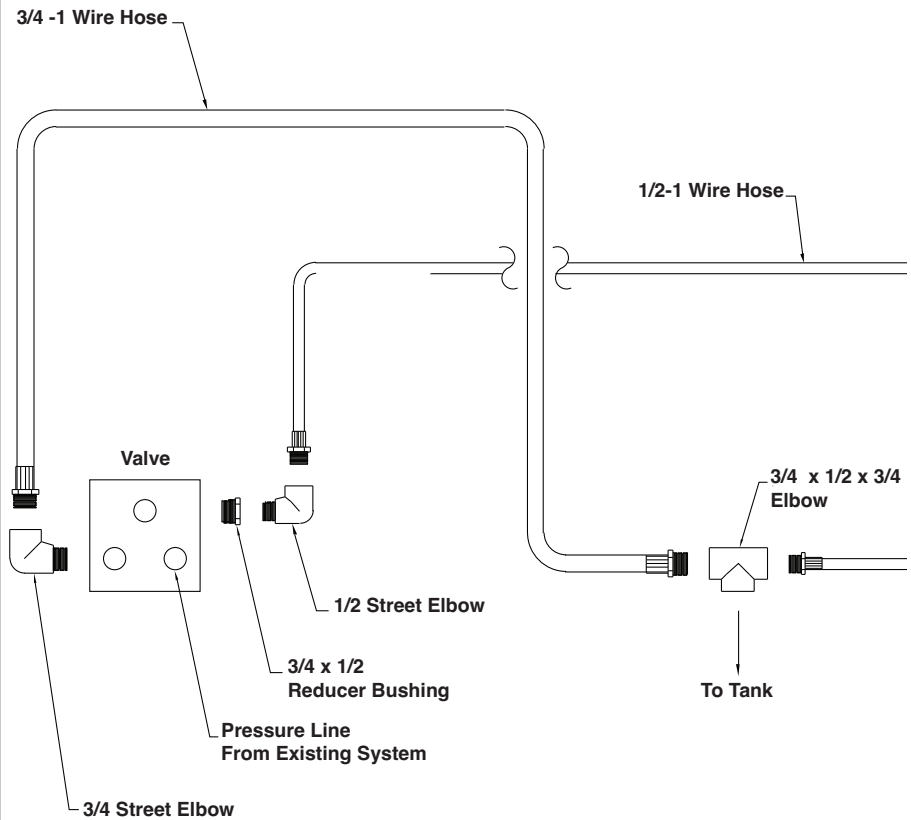
1. Check PTO RPM with truck engine at 2000 RPM. This reading should be in the operating range of 1,200 to 1,500 RPM. If this range cannot be achieved, it will be necessary to change the PTO accordingly.
2. Pump is installed between transmission PTO and existing hoist pump. Remove existing shaft connecting PTO to hoist pump.
3. Determine best location for pump and mount on bracket, (following general instructions below):
 - a. Keep in mind location of suction hoses, pressure hoses, and valve.
 - b. Pump drive shafting should be in as straight a line as possible, not to exceed 15-degree bend at any U-joint.
 - c. Pump drive shafting may be cut to length as needed.
 - d. If hoist pump is swivel type, that moves as dump body is raised or lowered, distance should be allowed between new pump and hoist pump for workable slip U-joint.
 - e. Short leg of pump bracket is bolted inside truck chassis frame.
 - f. Pump is bolted to long leg of bracket, using holes which best align pump.
 - g. Mounting bracket may be re-bent as needed and any excess cut off.
 - h. Furnished brace may be welded as needed for added support on pump bracket.

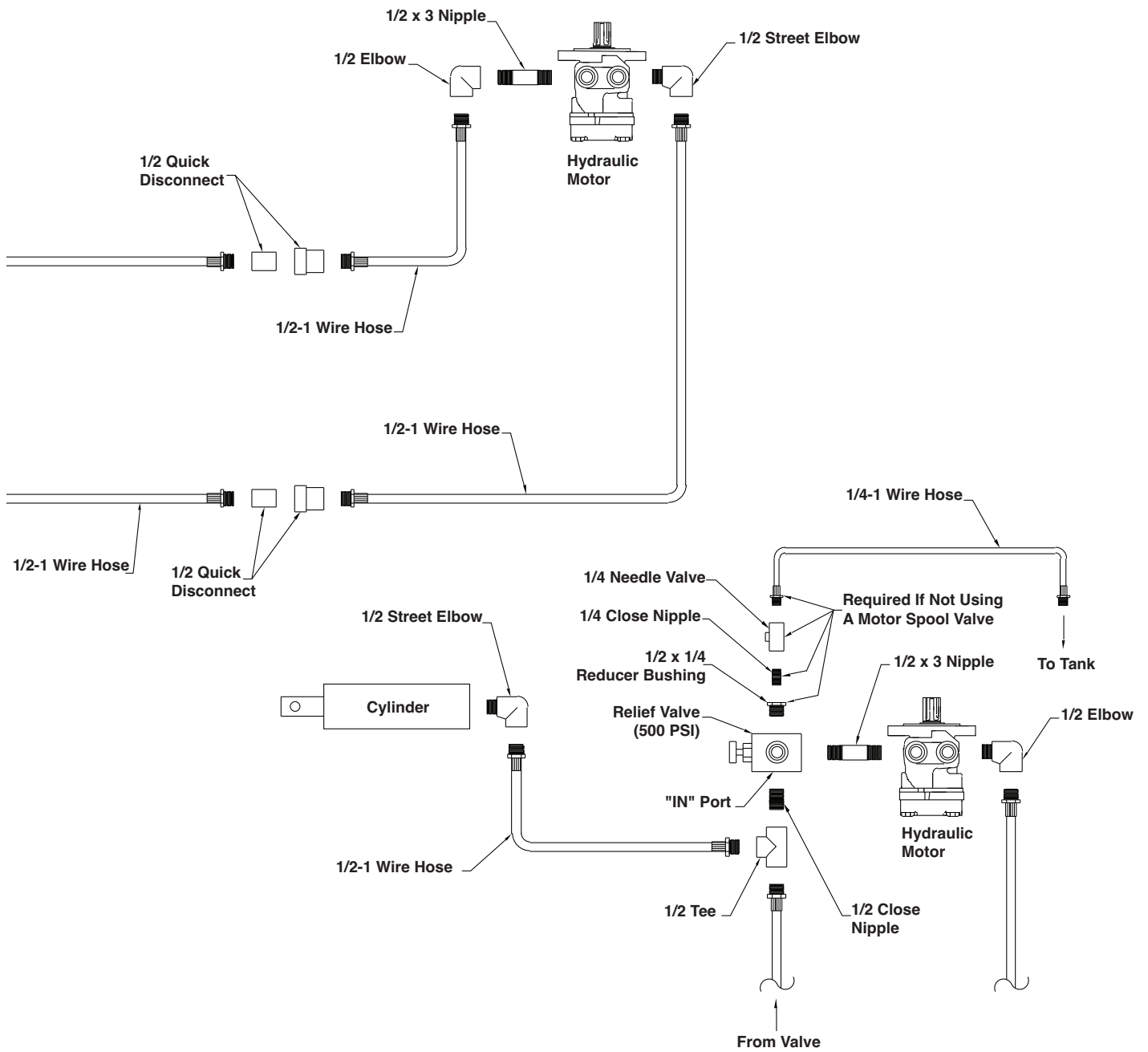
NOTE: Moving of hoist pump may be required; follow above general instructions as needed for re-installation of hoist pump.

HYDRAULIC PLUMBING DIAGRAM for SINGLE MOTOR SPREADERS

INSTALLATION NOTES

- Hydraulic components should be kept as clean as possible during assembly operations.
- Galvanized pipe and pipe fittings must not be used because flaking of galvanizing material can cause damage to major hydraulic components.
- A pipe joint sealant compatible with hydraulic oil must be applied to all NPT fittings. (Teflon tape is not recommended.)
- Sufficient hose should be allowed for raising dump body without kinking or stretching hose.
- Hose should be protected where severe wear may be caused by vibration or sliding movement.
- Long runs of hose should be supported by tie wiring or clamping.
- Pressure and return hoses, connected to spinner or auger motors, may be reversed for proper motor rotation.
- Three hose lines to rear of truck may be installed inside truck frame, under dump body floor, and secured in place.
- Use hose manufacturer's recommendations for fitting reusable hose ends.
- To eliminate hose twisting, allow hose end clamp to remain loose until hose end fitting is screwed tightly in place.





- This diagram is Monroe Truck Equipment Company's complete recommended hydraulic system.
- Standard pump, valve, tank and hose kits make up the complete system.
- This diagram may be used to install an entire system, or part of a system, depending upon kits supplied, and existing components on truck.
- Alternate proven methods and components are acceptable to suit various truck model requirements.

INSTALLATION INSTRUCTIONS

Reservoir and Filter Installation:

1. Locate the reservoir as close to the pump as possible.
2. The reservoir should be located outside the truck frame. (Ease in filling reservoir is important.)
3. The integral tank mounting brackets should be bolted to the truck frame.
4. The filter is screwed directly onto reservoir with cartridge down.
5. Oil must flow through filter in direction of arrow on filter.
6. Screw the gauge into the filter and be sure to tighten the plug in the other gauge port.

Valve Installation:

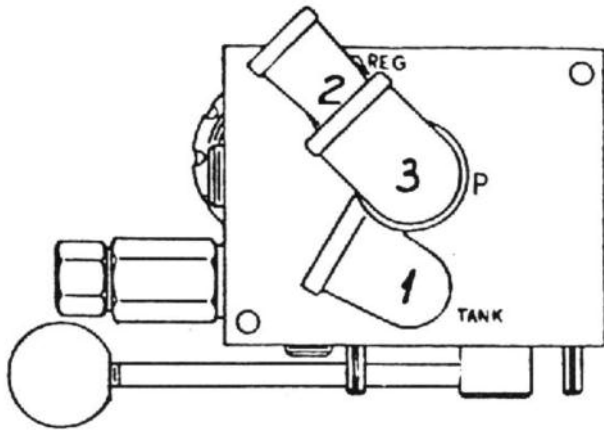
1. Locate valve in truck cab in position convenient for driver and for hosing or piping through floorboard.
2. Make a 4" hole thru the floor with a 4" hole saw. Position the valve mounting pedestal over the hole and bolt in place. Push the three (3) proper length hoses with swivel ends up thru the pedestal. Screw each one into the proper port. "P" is pressure line from the pump; "A" is the line to the auger; and "T" goes to the tank.

Tie hoses up so they don't rub the sharp edges of the hole.
3. Bolt the valve in place.
4. The valve may be operated in any position desired.

Hose Installation:

Enough hose and fittings are furnished in the various kits for standard spreader installation. Refer to the complete hydraulic plumbing diagram included in this manual for hosing all mounted components.

INSTALLATION INSTRUCTIONS



IMPORTANT: A pipe joint sealant compatible with hydraulic oil must be applied to all screwed fittings. (Teflon tape sealant is not recommended)

CAUTION: Over tightening fittings in valve may cause damage to valve body.

Fittings show in solid lines indicate permanent positions.

1. Screw $\frac{3}{4}$ " street elbow into port #1 until one complete revolution from position shown dotted cannot be completed. Leave the fitting in this dotted position until further instruction.
2. Screw $\frac{3}{4}$ " street elbow into port #2 using the same procedure as the fitting in port #1 until it is in position as shown dotted. See further instructions.
3. Finish tightening $\frac{3}{4}$ " street elbows into ports #1 and #2 until they are in permanent positions as shown.
4. Screw $\frac{3}{4}$ " x 3" pipe nipple into port #4. Screw $\frac{3}{4}$ " elbow onto nipple and tighten both fittings together until they are in permanent position as shown.

OPERATING INSTRUCTIONS

Caution:

1. Be sure valve is moved completely to “OFF” position and truck engine is shut off before working on or around spreader equipment!
2. When starting up new equipment, be sure everyone is standing clear and watch for any thing out of the ordinary that may require shutting the system down.

Initial Test Run:

1. The unit should be ran without material to check operation.
2. Fill the oil reservoir to without about 2” from the top, or to oil level check plug, with a high grade of non-foaming hydraulic oil. KEEP OIL CLEAN!
3. Move “On-Off” lever on control valve to the “Off” position.
4. Start the engine, engage the PTO or turn on hydraulics system, and allow the oil to circulate through the system.
5. Open the knob on the control valve and move the “On-Off” lever to the “On” position. If the engine lugs down, shut the valve “OFF” immediately. This indicates the system is not plumbed properly, which must be corrected.
6. Check the feed roll to make sure it is turning in the right direction. It discharges the material out the rear of the trough.
7. Check the system for leaks.
8. Refill the reservoir and the system is ready to use.

Preparing Spreader for Use:

1. Start truck engine, engage hydraulic system, turn “On-Off” lever “On” and adjust knob to vary feed roll speed. Run system to make sure spreader is operating correctly and to warm up the oil.
2. Shut system off and turn engine off.
3. Position cover plate in vertical position and lock cover into place.
4. Adjust back gate opening as required. See adjusting method page.
5. Open dump body tailgate latch and adjust stop chains so tailgate stops just short of the spreader cover plate.
6. The truck is now ready to load for spreading operation.

OPERATING INSTRUCTIONS

7. Engage PTO or turn “ON” the hydraulic system.
8. Raise dump body until material slides back and charges the spreader.
9. Set control valve knob to desired setting and engage spreader by moving “On-Off” lever to “On”.

Spreader Features:

1. The knob that changes the speed of the feed roll may be changed at any time, while the truck is in motion.
2. The roll may be stopped, without changing valve setting, by moving the “On-Off” lever to the “Off” position. This can also be done while the truck is in motion.
3. The back gate is spring loaded in order to pass slightly larger objects than the gate opening. The gate will return to its pre-set position after the object has passed.
4. For normal use of the dump truck, the cover plate can be laid flat over the trough. In this position, the tailgate can be opened from the top or bottom and the load can be dumped over the spreader.
5. If you have the optional chipping attachment, it should be removed before using the truck for hauling so it doesn't get damaged.

Preparing Spreader for Clean-Up:

1. If you have partial load left in the box when you're done spreading, the hinged feature on the rear cover plate really helps you. With the body down, just simply unlatch the cover plate from the vertical-spread position and tip it back towards you. Note that the left end of the cover plate is notched out. This allows you to push the cover plate over into the notched area until the right hinge comes out of its hole. It's Heavy-SO BE CAREFUL! At this point, pick the cover plate up and set it on the ground in a safe place.
2. Unhook the chains and dump the load over the spreader.
3. Put the box down and re-hook the tailgate chains so they don't hang in the trough.
4. MAKE SURE EVERYONE IS STANDING CLEAR. Engage the hydraulics; put the “On-Off” lever in the “On” position. This will turn the feed roll and clear the material out of the trough.
5. Re-Install the cover plate and the unit is now ready to wash up. The spreader trough should be kept empty to prevent material from freezing around the roller in severe, cold

OPERATING INSTRUCTIONS

weather.




Good Spreader Maintenance:

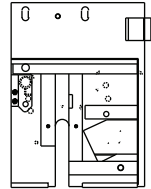
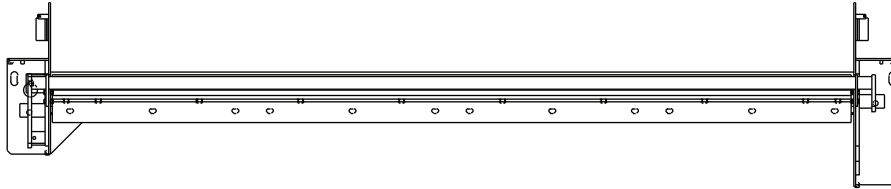
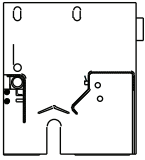
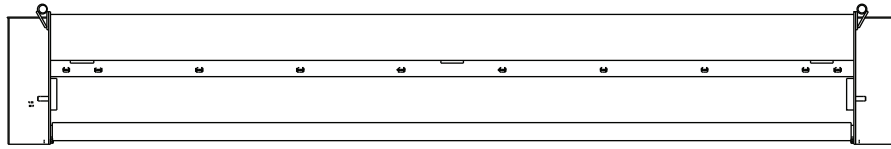
1. Keep the reservoir full - to check level plug or 2" from top.
2. Replace the oil filter cartridge twice a year or more often if necessary.
3. Clean quick disconnect before taking apart or connecting.
4. All bearings require periodic greasing and more frequent greasing during periods of heavy use.
5. Grease u-joints and slip shaft on pump drive shaft each time the truck chassis is lubricated.
6. Roller chains should be checked frequently, cleaned, greased, and the excessive slack taken up.
7. Frequent greasing or oiling of the spinner hinge rods is suggested.
8. Hosing down and cleaning the spreader after each use, and repainting or oiling after each season, will greatly prolong the life of a spreader.

GENERAL INFORMATION

- Location descriptions are noted in direction of travel. (i.e. front, rear, left and right.)
- Delivery of replacement parts is subject to our sales delivery terms.
- Use only **Monroe Truck Equipment** O.E.M. replacement parts. Failure to do so will void warranty.
- Replacement parts listed in this manual reflect our most common items. If you do not find the part you require, please call your distributor.
- **Monroe Truck Equipment** reserves the right to make revisions or alterations to this parts manual.

TORQUE CHART

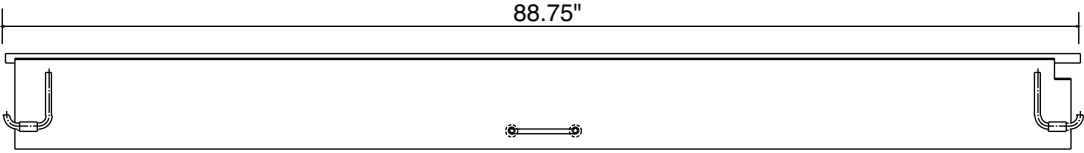
SIZE	 GRADE 2	 GRADE 5	 GRADE 8
1/4-20	50 IN-LBS	75 IN-LBS	9 FT-LBS
3/8-16	15 FT-LBS	23 FT-LBS	35 FT-LBS
1/2-13	35 FT-LBS	55 FT-LBS	80 FT-LBS
5/8-11	75 FT-LBS	110 FT-LBS	170 FT-LBS
3/4-10	130 FT-LBS	200 FT-LBS	280 FT-LBS
1-8	190 FT-LBS	480 FT-LBS	680 FT-LBS
1 1/4-7	380 FT-LBS	840 FT-LBS	1360 FT-LBS



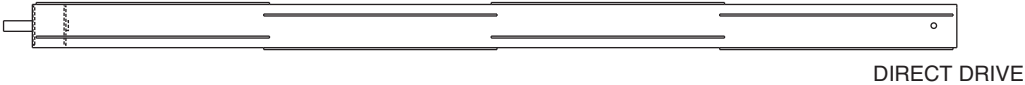
TROUGH ASSEMBLIES

Item	Qty	Part Number	Description
1	1	00068064-A	Trough Assembly, MS88RS, MS
		00068064-B	Trough Assembly, MS88RS, 304 SST
		00068096-A	Trough Assembly, MS88RS-DD, MS
		00068096-B	Trough Assembly, MS88RS-DD, 304 SST
		00075508-A	Trough Assembly, MS88RS-GB, MS
		00075508-B	Trough Assembly, MS88RS-GB, 304 SST
		00041905-A	Trough Assembly, MS96RS, MS
		00041905-B	Trough Assembly, MS96RS, 304 SST
		00068097-A	Trough Assembly, MS96RS-DD, MS
		00068097-B	Trough Assembly, MS96RS-DD, 304 SST
		00075509-A	Trough Assembly, MS96RS-GB, MS
		00075509-B	Trough Assembly, MS96RS-GB, 304 SST

**00057860 LID WELDMENT, MS88-RS, 88.75" (SHOWN)
00023200 LID WELDMENT, MS96-RS, 96.75"**



**00057867 ROLLER WELDMENT, MS88-RS
00075515 ROLLER WELDMENT, MS88-RS-GB
01161125 ROLLER WELDMENT, MS96-RS
00075516 ROLLER WELDMENT, MS96-RS-GB
00075512 ROLLER WELDMENT, MS96-RS-DD**



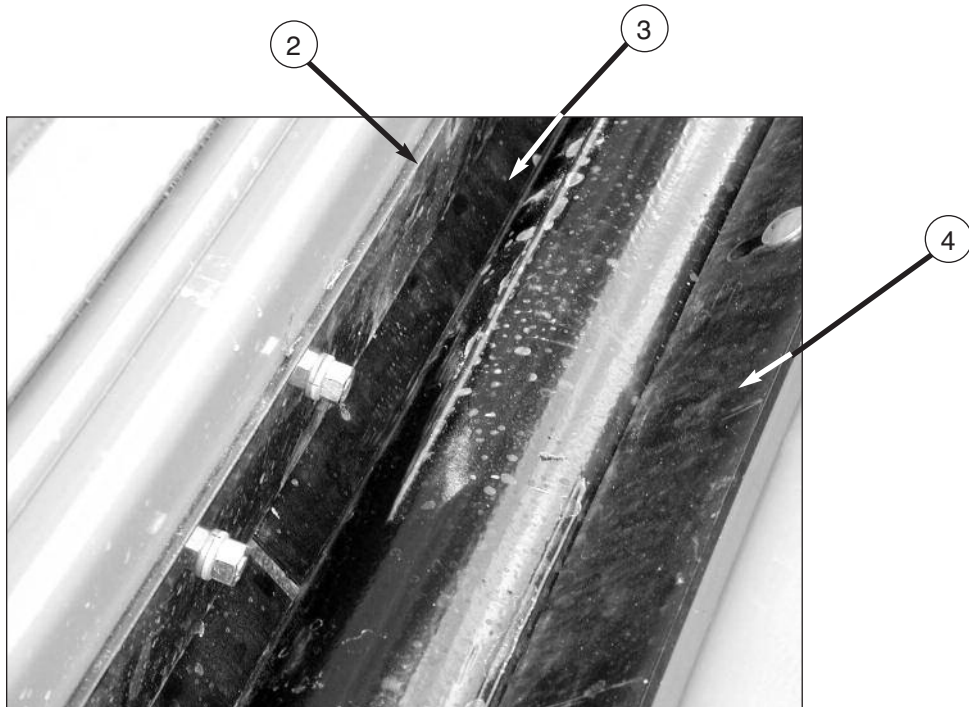
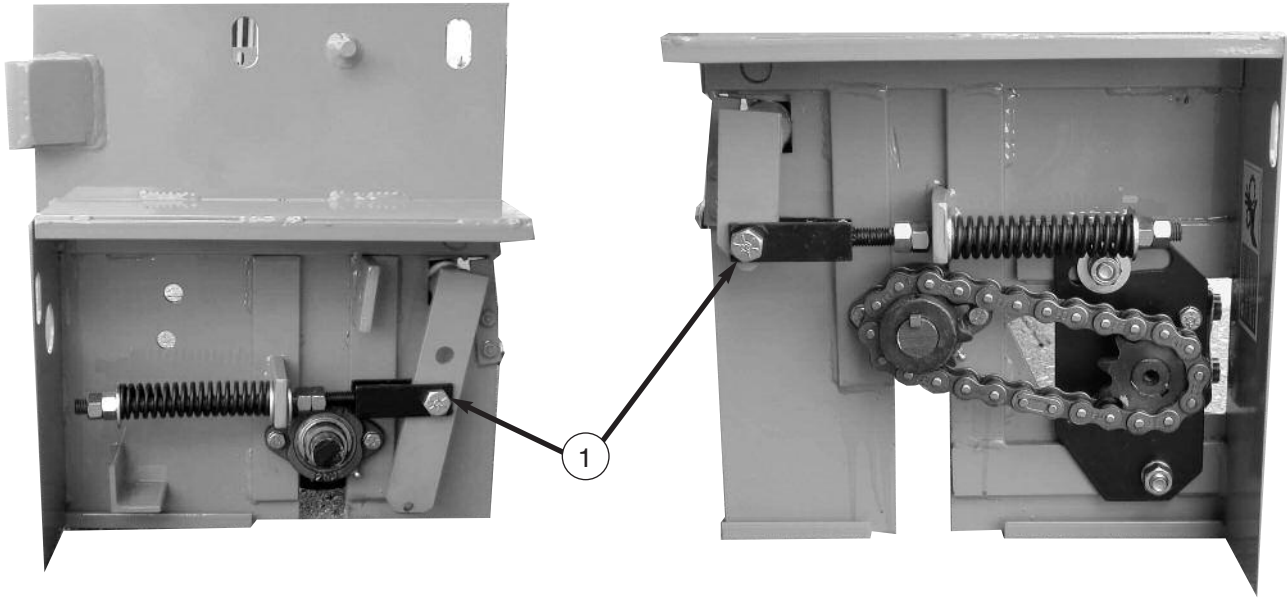
00068094 GATE KIT, HYDRAULIC, MS88-RS

Item	Qty	Part Number	Description
1	1	00024914-A 00024914-B	Cylinder Assembly, Hydraulic, MS Cylinder Assembly, Hydraulic, SST
2	1	00023241-A 00023241-B	Adjuster Weldment, Gate, MS Adjuster Weldment, Gate, SST
3	1	00047033-A 00047033-B	Wearstrip, Gate, MS Wearstrip, Gate, SST
4	1	00057852-A 00057852-B	Strip, Seal, Hydraulic, MS Strip, Seal, Hydraulic, SST
5	1	00068060-A 00068060-B	Retainer, Sealstrip, MS Retainer, Sealstrip, SST
6	1	00041064-A 00041064-B	Wearstrip, Front, MS Wearstrip, Front, SST
7	1	00075519	Rubber, 5/16 x 6 x 87
8	1	05016975	Eyebolt, 1/4-20 x 4, Zinc
Hardware for Attaching Front Wearstrip Item #6	10	05013986	Bolt, 3/8-16 x 1, Carriage, Zinc
	10	05016003	Bolt, 3/8-16 x 1, Carriage, SST
	10	05020266	Nut, 3/8-16, Hex, Zinc
	10	05020842	Nut, 3/8-16, Hex, SST
	10	05021365	Washer, 3/8, Lock, Zinc
	10	05021392	Washer, 3/8, Lock, SST
	10	05021307	Washer, 3/8, Flat, Zinc
	10	05021390	Washer, 3/8, Flat, SST
Hardware for Installing Gate Adjuster Weldment Item #2	1	05035066	Spring, Gate, 1.095 x .148 x 5
	1	05010691	Bolt, 1/2-13 x 1 1/2, Zinc
	1	05016096	Bolt, 1/2-13 x 1 1/2, SST
	1	05020847	Nut, 1/2-13, Top Lock, C&W
	1	05020908	Nut, 1/2-13, Nylon Lock, SST
	4	05020268	Nut, 1/2-13, Hex, Zinc
	4	05020848	Nut, 1/2-13, Hex, SST
	2	05021309	Washer, 1/2, Flat, Zinc
2	05021391	Washer, 1/2, Flat, SST	
Hardware for Attaching Gate Wearstrip Item #3 and Hydraulic Seal Strip Item #4	12	05010644	Bolt, 3/8-16 x 1 1/4, G8, HHCS, Zinc
	12	05016049	Bolt, 3/8-16 x 1 1/4, HHCS, SST
	12	05020266	Nut, 3/8-16, Hex, Zinc
	12	05020842	Nut, 3/8-16, Hex, SST
	12	05021365	Washer, 3/8, Lock, Zinc
	12	05021392	Washer, 3/8, Lock, SST
Hardware for Attaching Sealstrip Retainer Item #5 and Rubber Item #7	11	05010647	Bolt, 3/8-16 x 2, G8, HHCS, Zinc
	11	05020266	Bolt, 3/8-16 x 2, HHCS, SST
	11	05020842	Nut, 3/8-16, Hex, Zinc
	11	05021365	Nut, 3/8-16, Hex, SST
	11	05021392	Washer, 3/8, Lock, Zinc Washer, 3/8, Lock, SST
Hardware for Attaching Hydraulic Cylinder Assembly Item #1 and Eyebolt Item #8	1	05035045	Spring, HD Extension
	1	05022161	Clevis, Pin Kit, 1/2-13
	4	05010643	Bolt, 3/8-16 x 1, HHCS, Zinc
	4	05016034	Bolt, 3/8-16 x 1, HHCS, SST
	2	05020264	Nut, 1/4-20, Hex, Zinc
	2	05020844	Nut, 1/4-20, Hex, SST
	4	05020266	Nut, 3/8-16, Hex, Zinc
	4	05020842	Nut, 3/8-16, Hex, SST
	4	05021365	Washer, 3/8, Lock, Zinc
4	05021392	Washer, 3/8, Lock, SST	

00075521 GATE KIT, HYDRAULIC, MS96-RS

Item	Qty	Part Number	Description
1	1	00024914-A 00024914-B	Cylinder Assembly, Hydraulic, MS Cylinder Assembly, Hydraulic, SST
2	1	00023241-A 00023241-B	Adjuster Weldment, Gate, MS Adjuster Weldment, Gate, SST
3	1	00026590-A 00026590-B	Wearstrip, Gate, MS Wearstrip, Gate, SST
4	1	00066585-A 00066585-B	Strip, Seal, Hydraulic, MS Strip, Seal, Hydraulic, SST
5	1	00066586-A 00066586-B	Retainer, Sealstrip, MS Retainer, Sealstrip, SST
6	1	00023219-A 00023219-B	Wearstrip, Front, MS Wearstrip, Front, SST
7	1	00075520	Rubber, 5/8 x 6 x 95
8	1	05016975	Eyebolt, 1/4-20 x 4, Zinc
Hardware for Attaching Front Wearstrip Item #6	10	05013986	Bolt, 3/8-16 x 1, Carriage, Zinc
	10	05016003	Bolt, 3/8-16 x 1, Carriage, SST
	10	05020266	Nut, 3/8-16, Hex, Zinc
	10	05020842	Nut, 3/8-16, Hex, SST
	10	05021365	Washer, 3/8, Lock, Zinc
	10	05021392	Washer, 3/8, Lock, SST
	10	05021307	Washer, 3/8, Flat, Zinc
	10	05021390	Washer, 3/8, Flat, SST
Hardware for Installing Gate Adjuster Weldment Item #2	1	05035066	Spring, Gate, 1.095 x .148 x 5
	1	05010691	Bolt, 1/2-13 x 1 1/2, Zinc
	1	05016096	Bolt, 1/2-13 x 1 1/2, SST
	1	05020847	Nut, 1/2-13, Top Lock, C&W
	1	05020908	Nut, 1/2-13, Nylon Lock, SST
	4	05020268	Nut, 1/2-13, Hex, Zinc
	4	05020848	Nut, 1/2-13, Hex, SST
	2	05021309	Washer, 1/2, Flat, Zinc
2	05021391	Washer, 1/2, Flat, SST	
Hardware for Attaching Gate Wearstrip Item #3 and Hydraulic Seal Strip Item #4	12	05010644	Bolt, 3/8-16 x 1 1/4, G8, HHCS, Zinc
	12	05016049	Bolt, 3/8-16 x 1 1/4, HHCS, SST
	12	05020266	Nut, 3/8-16, Hex, Zinc
	12	05020842	Nut, 3/8-16, Hex, SST
	12	05021365	Washer, 3/8, Lock, Zinc
	12	05021392	Washer, 3/8, Lock, SST
Hardware for Attaching Sealstrip Retainer Item #5 and Rubber Item #7	11	05010647	Bolt, 3/8-16 x 2, G8, HHCS, Zinc
	11	05020266	Nut, 3/8-16, Hex, Zinc
	11	05020842	Nut, 3/8-16, Hex, SST
	11	05021365	Washer, 3/8, Lock, Zinc
	11	05021392	Washer, 3/8, Lock, SST
Hardware for Attaching Hydraulic Cylinder Assembly Item #1 and Eyebolt Item #8	1	05035045	Spring, HD Extension
	1	05022161	Clevis, Pin Kit, 1/2-13
	4	05010643	Bolt, 3/8-16 x 1, HHCS, Zinc
	4	05016034	Bolt, 3/8-16 x 1, HHCS, SST
	2	05020264	Nut, 1/4-20, Hex, Zinc
	2	05020844	Nut, 1/4-20, Hex, SST
	4	05020266	Nut, 3/8-16, Hex, Zinc
	4	05020842	Nut, 3/8-16, Hex, SST
	4	05021365	Washer, 3/8, Lock, Zinc
	4	05021392	Washer, 3/8, Lock, SST

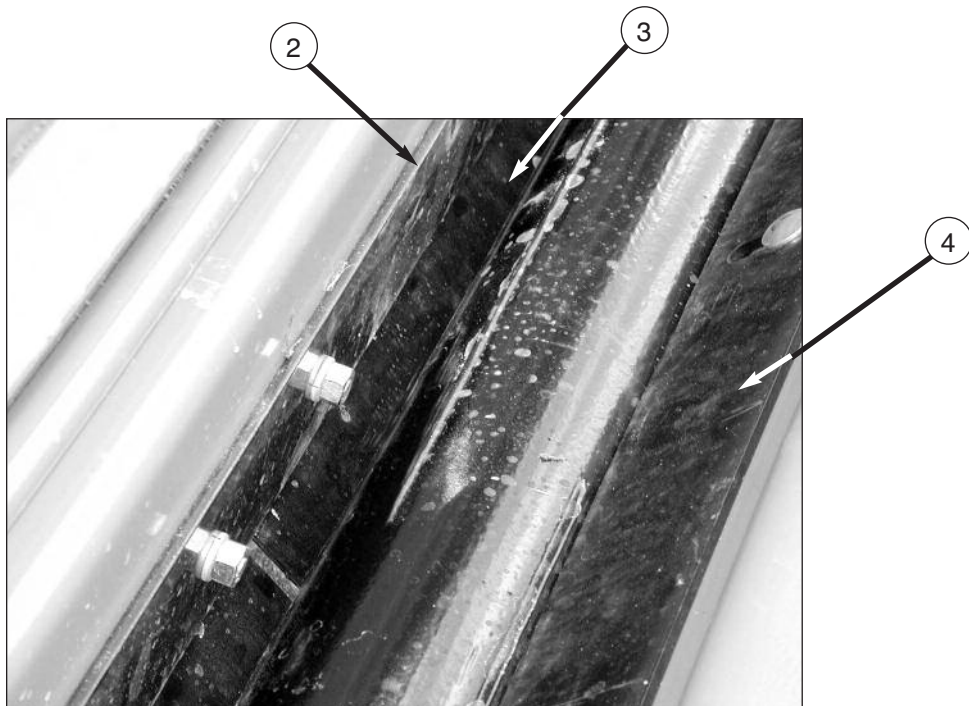
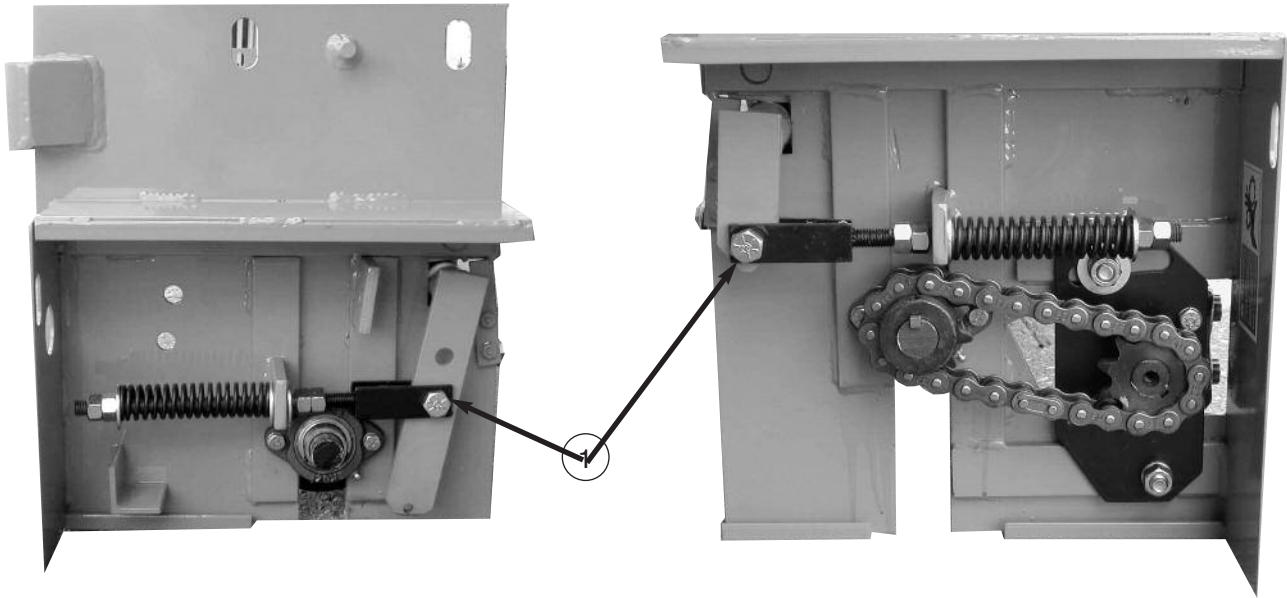
GATE KIT, SPRING



00075517 GATE KIT, SPRING, MS96RS

Item	Qty	Part Number	Description
1	2	00023241-A 00023241-B	Adjuster Weldment, Gate, MS Adjuster Weldment, Gate, SST
2	1	00026590-A 00026590-B	Wearstrip, Gate, MS Wearstrip, Gate, SST
3	4	00026591-A 00026591-B	Flap, Gate, MS Flap, Gate, SST
4	1	00023219-A 00023219-B	Wearstrip, Front, MS Wearstrip, Front, SST
Hardware for Installing Gate Flap Item #3 and Gate Wearstrip Item #2	12	05035067	Flap, Spring
	12	05010653	Bolt, ⅝-16 x 3½, Zinc
	12	05016046	Bolt, ⅝-16 x 3½, SST
	12	05020266	Nut, ⅝-16, Hex, Zinc
	12	05020842	Nut, ⅝-16, Hex, SST
	12	05021365	Washer, ⅝, Lock, Zinc
	12	05021392	Washer, ⅝, Lock, SST
	24	05021307	Washer, ⅝, Flat, Zinc
24	05021390	Washer, ⅝, Flat, SST	
Hardware for Attaching Front Wearstrip Item #4	10	05013986	Bolt, ⅝-16 x 1, Zinc
	10	05016003	Bolt, ⅝-16 x 1, SST
	10	05020266	Nut, ⅝-16, Hex, Zinc
	10	05020842	Nut, ⅝-16, Hex, SST
	10	05021365	Washer, ⅝, Lock, Zinc
	10	05021392	Washer, ⅝, Lock, SST
	10	05021307	Washer, ⅝, Flat, Zinc
	10	05021390	Washer, ⅝, Flat, SST
Hardware for Installing Gate Adjuster Weldment Item #1	1	05035066	Gate Spring
	1	05010691	Bolt, ½-13 x 1 ½, Zinc
	1	05016096	Bolt, ½-13 x 1 ½, SST
	1	05020847	Nut, ½-13, Top Lock, Zinc
	1	05020908	Nut, ½-13, Nylon Lock, SST
	4	05020268	Nut, ½-13, Hex, Zinc
	4	05020848	Nut, ½-13, Hex, SST
	2	05021309	Washer, ½, Flat, Zinc
2	05021391	Washer, ½, Flat, SST	

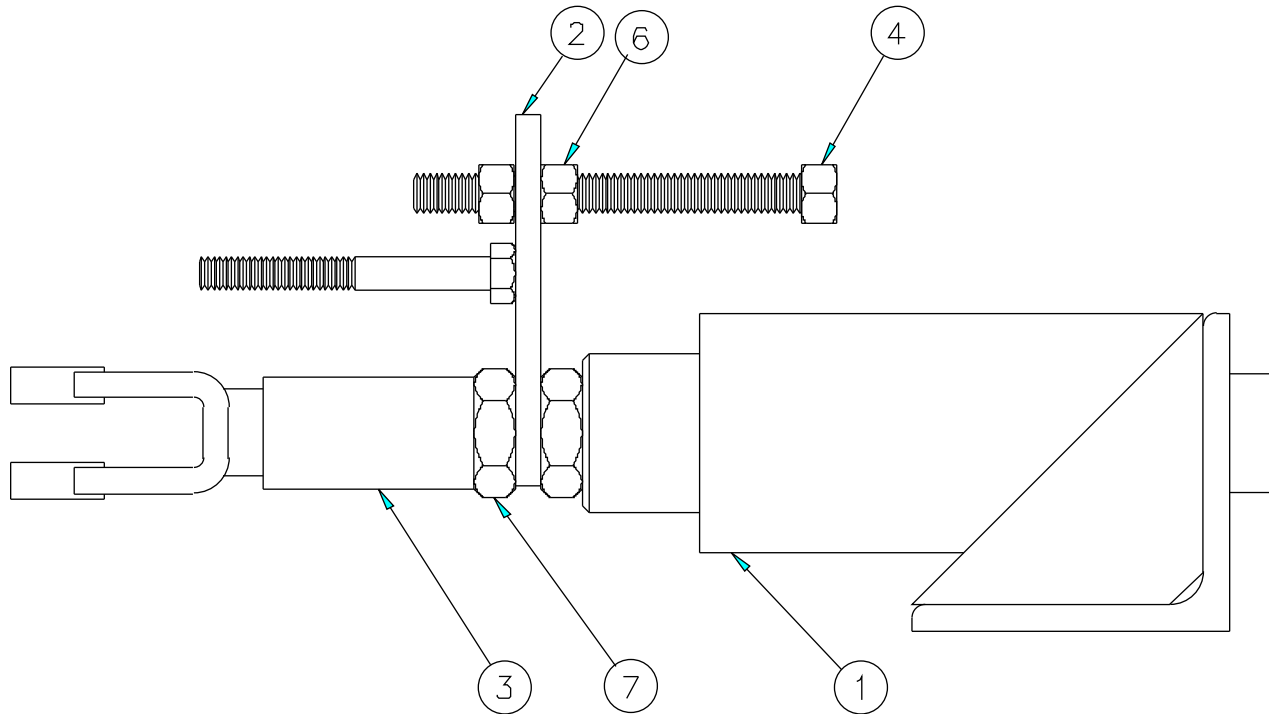
GATE KIT, SPRING



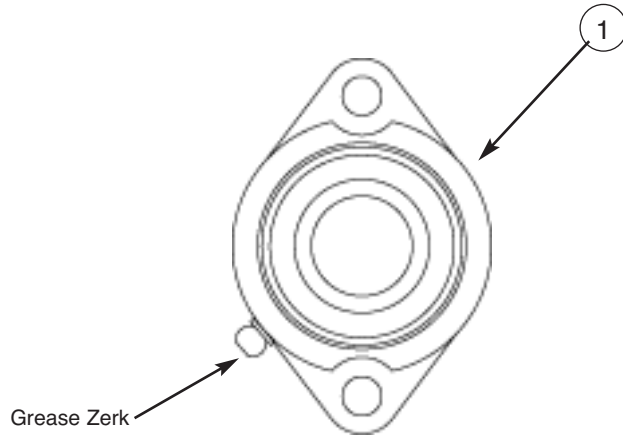
00068063 GATE KIT, SPRING, MS88RS

Item	Qty	Part Number	Description
1	2	00023241-A 00023241-B	Adjuster Weldment, Gate, MS Adjuster Weldment, Gate, SST
2	1	00047033-A 00047033-B	Wearstrip, Gate, MS Wearstrip, Gate, SST
3	4	01161138-A 01161138-B	Flap, Gate, MS Flap, Gate, SST
4	1	00041064-A 00041064-B	Wearstrip, Front, MS Wearstrip, Front, SST
Hardware for Installing Gate Flap Item #3 and Gate Wearstrip Item #2	12	05035067	Flap, Spring
	12	05010653	Bolt, 3/8-16 x 3 1/2, Zinc
	12	05016046	Bolt, 3/8-16 x 3 1/2, SST
	12	05020266	Nut, 3/8-16, Hex, Zinc
	12	05020842	Nut, 3/8-16, Hex, SST
	12	05021365	Washer, 3/8, Lock, Zinc
	12	05021392	Washer, 3/8, Lock, SST
	24	05021307	Washer, 3/8, Flat, Zinc
24	05021390	Washer, 3/8, Flat, SST	
Hardware for Attaching Front Wearstrip Item #4	10	05013986	Bolt, 3/8-16 x 1, Zinc
	10	05016003	Bolt, 3/8-16 x 1, SST
	10	05020266	Nut, 3/8-16, Hex, Zinc
	10	05020842	Nut, 3/8-16, Hex, SST
	10	05021365	Washer, 3/8, Lock, Zinc
	10	05021392	Washer, 3/8, Lock, SST
	10	05021307	Washer, 3/8, Flat, Zinc
	10	05021390	Washer, 3/8, Flat, SST
Hardware for Installing Gate Adjuster Weldment Item #1	1	05035066	Gate Spring
	1	05010691	Bolt, 1/2-13 x 1 1/2, Zinc
	1	05016096	Bolt, 1/2-13 x 1 1/2, SST
	1	05020847	Nut, 1/2-13, Top Lock, Zinc
	1	05020908	Nut, 1/2-13, Nylon Lock, SST
	4	05020268	Nut, 1/2-13, Hex, Zinc
	4	05020848	Nut, 1/2-13, Hex, SST
	2	05021309	Washer, 1/2, Flat, Zinc
2	05021391	Washer, 1/2, Flat, SST	

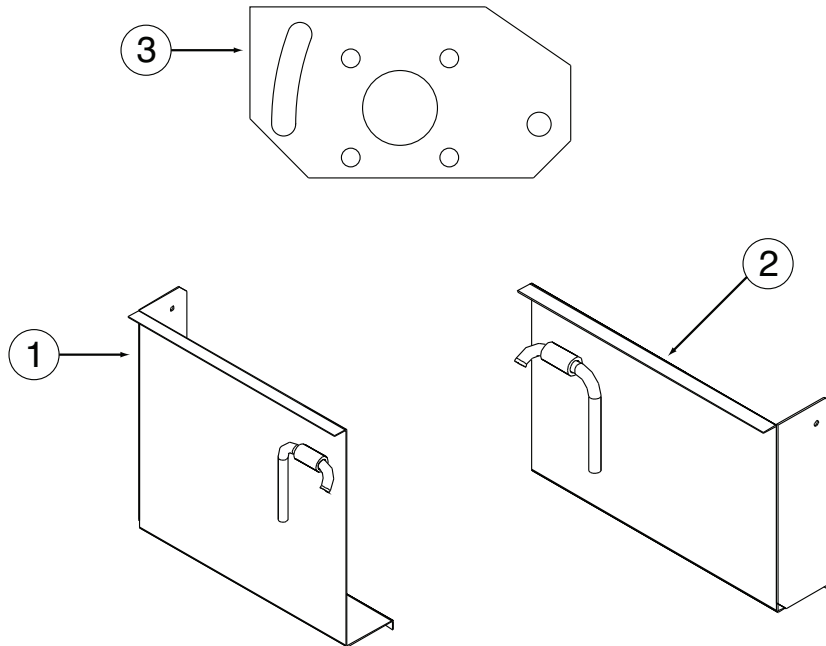
CYLINDER ASSEMBLY, HYDRAULIC



00024914 CYLINDER ASSEMBLY, HYDRUALIC			
Item	Qty	Part Number	Description
1	1	00024906-A 00024906-B	Housing Weldment, Cylinder, MS Housing Weldment, Cylinder, SST
2	1	00024912-A 00024912-B	Guide Weldment, Hydraulic, MS Guide Weldment, Hydraulic, SST
3	1	00024913-A 00024913-B	Connector Weldment, Gate, MS Connector Weldment, Gate, SST
4	1	00024910-A 00024910-B	Stop Weldment, Hydrualic Gate, MS Stop Weldment, Hydraulic Gate, SST
5	1	00024909	Adjuster, Cylinder, Hydraulic
6	2	05020266	Nut, $\frac{3}{8}$ -16, G8, Hex, Zinc
	2	05020842	Nut, $\frac{3}{8}$ -16, G8, Hex, SST
7	2	05020122	Nut, $\frac{5}{8}$ -11, G2, Jam, Zinc

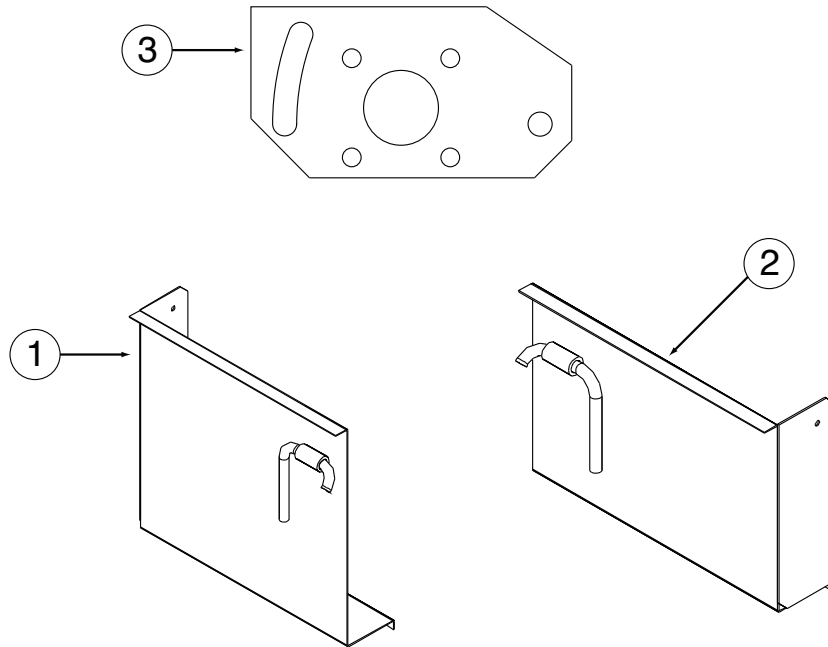


00068065 BEARING KIT, 1, 2-BOLT			
Item	Qty	Part Number	Description
1	1	05030023	Bearing, 1" Bore, 2-Bolt Mount
2	2	05010619 05016139	Bolt, $\frac{5}{16}$ -18 x $\frac{7}{8}$, G8, HHCS, Zinc Bolt, $\frac{5}{16}$ -18 x $\frac{7}{8}$, HHCS, SST
3	2	05021364 05021407	Washer, $\frac{5}{16}$, Lock, Zinc Washer $\frac{5}{16}$, Lock, SST



00068049 DRIVE KIT, CHAIN, WHITE MOTOR, 10 CI, 1" SHAFT

Item	Qty	Part Number	Description
1	1	00057861-A	Chain Cover, RH, MS
	1	00057861-B	Chain Cover, RH, SST
2	1	00057864-A	Chain Cover, LH, MS
	1	00057864-B	Chain Cover, LH, SST
3	1	00023300-A	Mount Plate, Motor, MS
	1	00023300-B	Mount Plate, Motor, SST
4	1	05006549	Motor, Hydraulic, White, 10 CI, 1" Shaft (See page 34-35)
5	2	05033010	Sprocket, 60B10Fx1 ¼" Keyway
6	1	05036059	Chain Assembly, #60
7	1	05050121	Key, ¼ x ¼ x 1½
8	4	05010642	Bolt, ⅜-16 x ⅞, G8, HHCS, Zinc
	4	05016050	Bolt, ⅜-16 x ⅞, HHCS, SST
9	2	05010691	Bolt, ½-13 x 1.5", G8, HHCS, Zinc
	2	05016096	Bolt, ½-13 x 1.5", HHCS, SST
10	2	05020268	Nut, ½-13, G8, Hex, Zinc
	2	05020848	Nut, ½-13, Hex, SST
11	4	05021365	Washer, ⅜, Lock, Zinc
	4	05021392	Washer, ⅜, Lock, SST
12	2	05021367	Washer, ½, Lock, Zinc
	2	05021396	Washer, ½, Lock, SST
13	1	05021309	Washer, ½, Flat, Zinc
	1	05021391	Washer, ½, Flat, SST



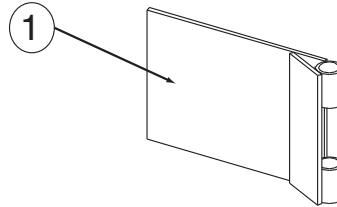
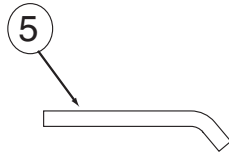
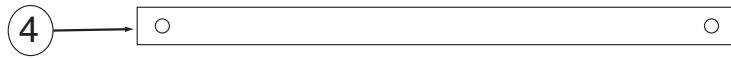
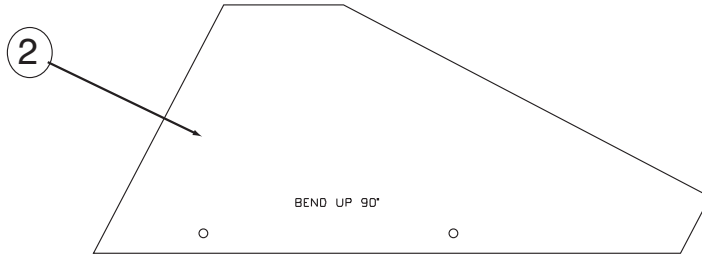
00075526 DRIVE KIT, CHAIN ,SPEED SENSOR			
Item	Qty	Part Number	Description
1	1	00057861-A	Chain Cover, RH, MS
	1	00057861-B	Chain Cover, RH, SST
2	1	00057864-A	Chain Cover, LH, MS
	1	00057864-B	Chain Cover, LH, SST
3	1	00023300-A	Mount Plate, Motor, MS
	1	00023300-B	Mount Plate, Motor, SST
4	1	05006689	Motor, Hydraulic, White, 10 CI, 1" Shaft (See page 34-35)
5	2	05033010	Sprocket, 60B10Fx1 ¼" Keyway
6	1	05036059	Chain Assembly, #60
7	1	05050121	Key, ¼ x ¼ x 1½
8	4	05010642	Bolt, ⅝-16 x ⅞, G8, HHCS, Zinc
	4	05016050	Bolt, ⅝-16 x ⅞, HHCS, SST
9	2	05010694	Bolt, ½-13 x 2.25", G8, HHCS, Zinc
	2	05016207	Bolt, ½-13 x 2.25", HHCS, SST
10	2	05020268	Nut, ½-13, G8, Hex, Zinc
	2	05020848	Nut, ½-13, Hex, SST
11	4	05021365	Washer, ⅝, Lock, Zinc
	4	05021392	Washer, ⅝, Lock, SST
12	2	05021367	Washer, ½, Lock, Zinc
	2	05021396	Washer, ½, Lock, SST
13	1	05021309	Washer, ½, Flat, Zinc
	1	05021391	Washer, ½, Flat, SST
14	2	00054873	Spacer, Mounting Plate, MS

00075524 DRIVE KIT, DIRECT

Item	Qty	Part Number	Description
1	1	00057864-A 00057864-B	Chain Cover, MS-RS, LH, MS Chain Cover, MS-RS, LH, SST
2	1	05006556	Motor, Hydraulic, White, 24 CID, 1" Shaft <i>(See page 36-37)</i>
3	4	05010642 05016050	Bolt, 3/8-16 x 7/8, G8, HHCS, Zinc Bolt, 3/8-16 x 7/8, HHCS, SST
4	4	05021365 05021392	Washer, 3/8, Lock, Zinc Washer, 3/8, Lock, SST

00075522 DRIVE KIT, GEARBOX

Item	Qty	Part Number	Description
1	1	00057864-A 00057864-B	Chain Cover, MS-RS, LH, MS Chain Cover, MS-RS, LH, 304 SST
2	1	00075523	Round, 1/2 DIA x 4 1/4
3	1	05006550	Motor, Hydraulic, White, 6.3 CID, 1" Shaft <i>(See page 32-33)</i>
4	1	05007040 05007338	Gearbox, 5:1, 1 1/4 Shaft <i>(See page 40-41)</i> Gearbox, 5:1, 1 1/4 Shaft, Superior <i>(See page 44-45)</i>
5	1	05051327	Bushing
6	4	05017049	Bolt, 3/8-16 x 7/8, SCHS, Zinc
7	2 2	05010691 05016096	Bolt, 1/4-13 x 1 1/2, G8, HHCS, Zinc Bolt, 1/4-13 x 1 1/2, HHCS, SST
8	4 4	05021365 05021392	Washer, 3/8, Lock, Zinc Washer, 3/8, Lock, SST
9	2 2	05021367 05021396	Washer, 1/2, Lock, Zinc Washer, 1/2, Lock, SST



00068062 MOUNTING KIT			
Item	Qty	Part Number	Description
1	2	00041044-A	Bracket Weldment, Body, MS
	2	00041044-B	Bracket Weldment, Body, SST
2	1	00021207-A	Shield, Tailgate, RH, MS
	1	00021207-B	Shield, Tailgate, RH, SST
3	1	00021208-A	Shield, Tailgate, LH, MS
	1	00021208-B	Shield, Tailgate, LH, SST
4	2	00041118-A	Hanger, Support, MS
	2	00041118-B	Hanger, Support, SST
5	2	00041074-A	Pin, Quick Detach, MS
	2	00041074-B	Pin, Quick Detach, SST
6	1	05016907-A	Bolt Kit, MS
	1	05016907-B	Bolt Kit, SST

DECAL KIT



1



2



3

MONROE SPREADER

Monroe, Wisconsin 53566

4



QUALITY CHECK

Inspected by:

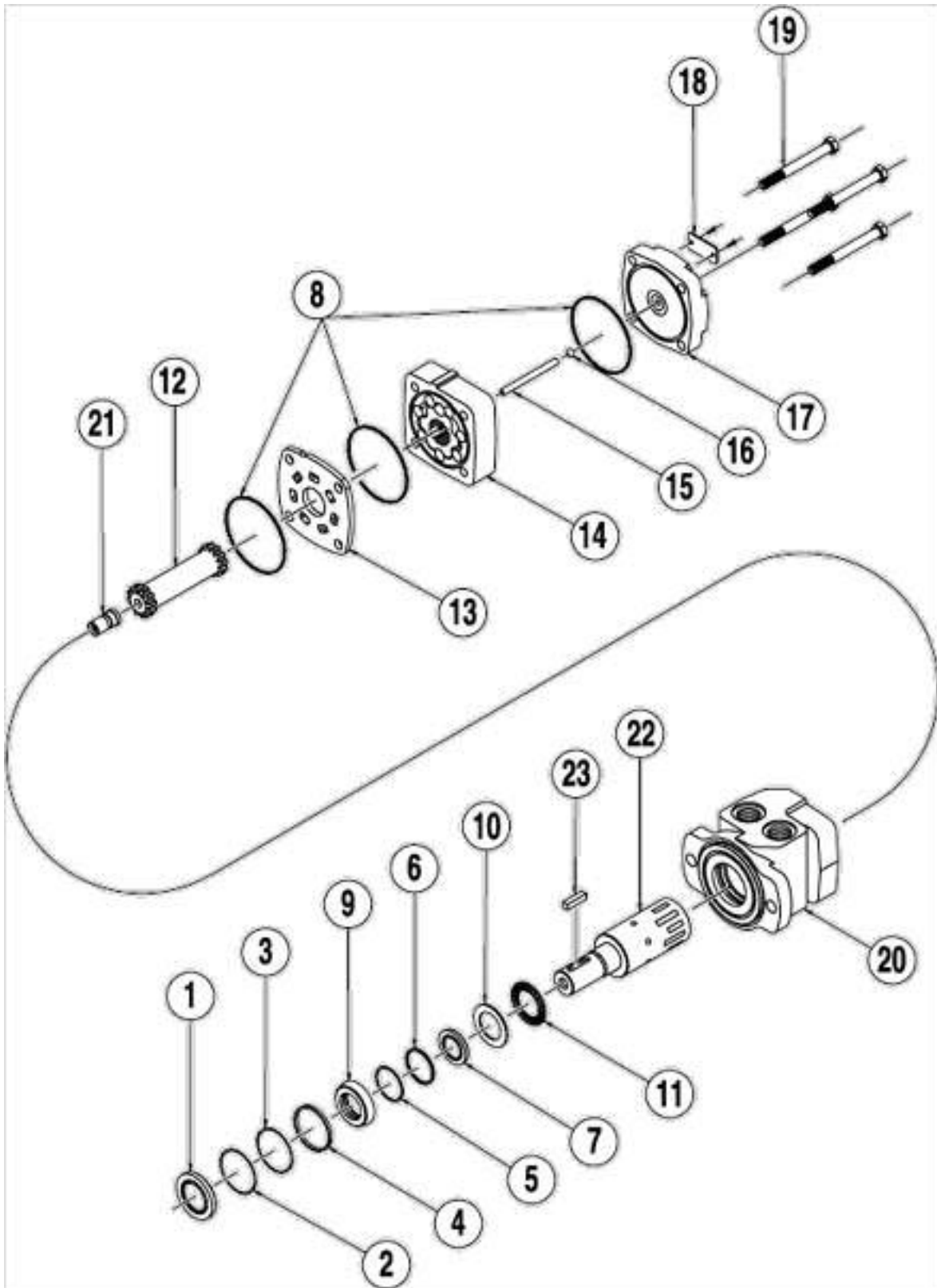
05052311

5

00075525 DECAL KIT

Item	Qty	Part Number	Description
1	2	05051401	Decal-Danger: Turning Augers...
2	1	05051403	Decal, Safety Chain Cover
3	1	05051404	Decal-Caution: #1-#6
4	1	05051405	Decal, Monroe Spreader
5	1	05052311	Decal, Quality Check

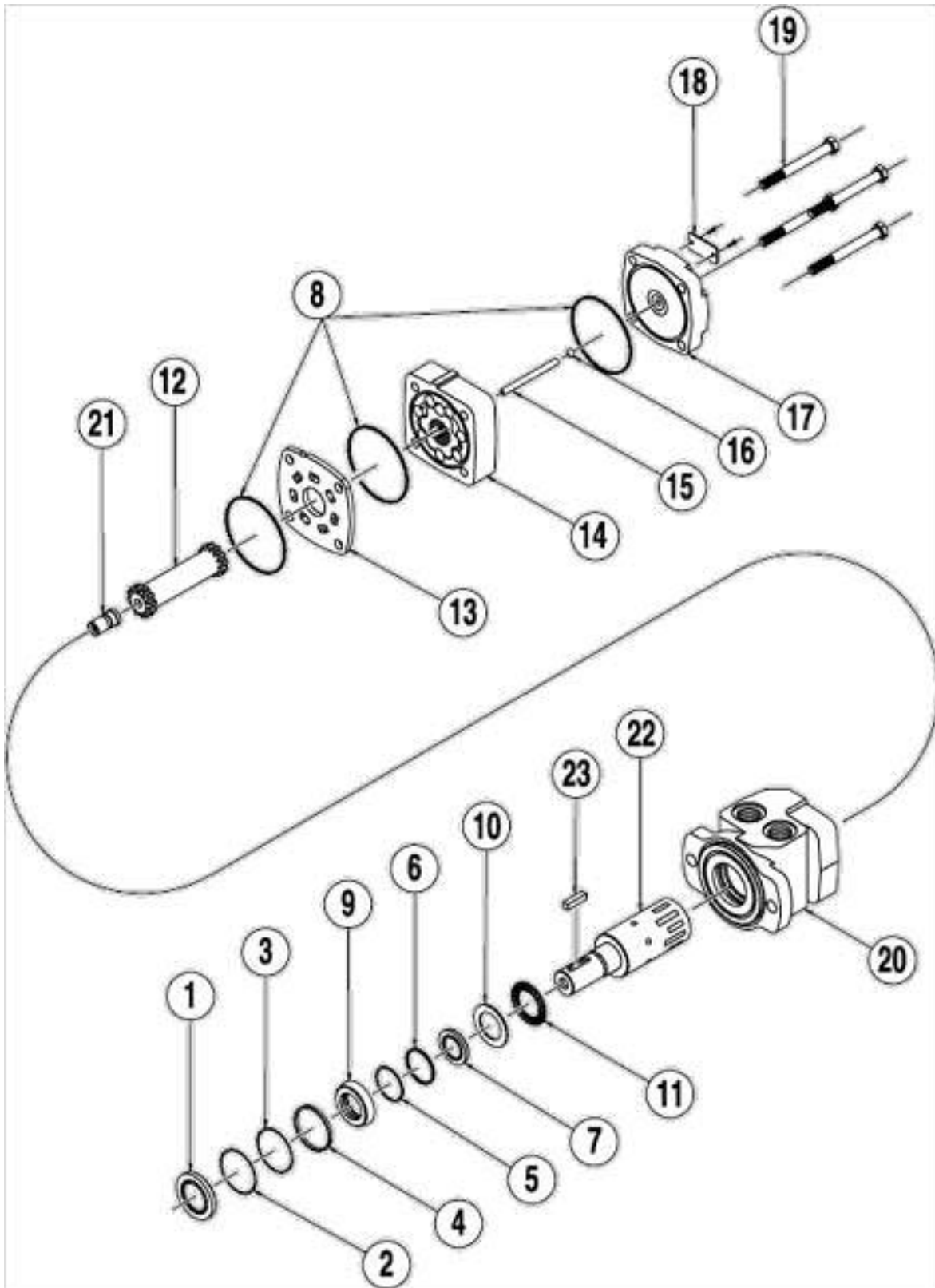
05006550 MOTOR, HYDRAULIC, WHITE, 6.3 CI, 4-BOLT



MOTOR ASSEMBLY PARTS LIST

Item	Part Number	Description
1	Seal Kit 05006415	Dust Seal
2		Split Wire Ring
3		Metal Backup Shim
4		High Pressure Seal
5		Metal Backup Shim
6		Teflon Backup Shim
7		Shaft Seal
8		Body Seals (3)
9	Seal Kit 05006516	Seal Carrier
10	05006516	Thrust Washer
11	05006357	Thrust Bearing
12	05006574	Drive Link Kit
13	05006359	Wear Plate
14	05006573	Rotor Kit
15	05006575	Drive Link Pin Kit
16	---	Included in item #15 Drive Link Pin Kit
17	05006360	End Cover
18	---	Serial Number Plate
19	05006576	Bolt Set Kit
20	05006564	Housing Kit, 4-Hole, w/ 7/8" O-Ring
21	05006358	Cooling Plug
22	05006370	Shaft Kit, 1" Straight
23	05006371	Key Kit, 1" Straight

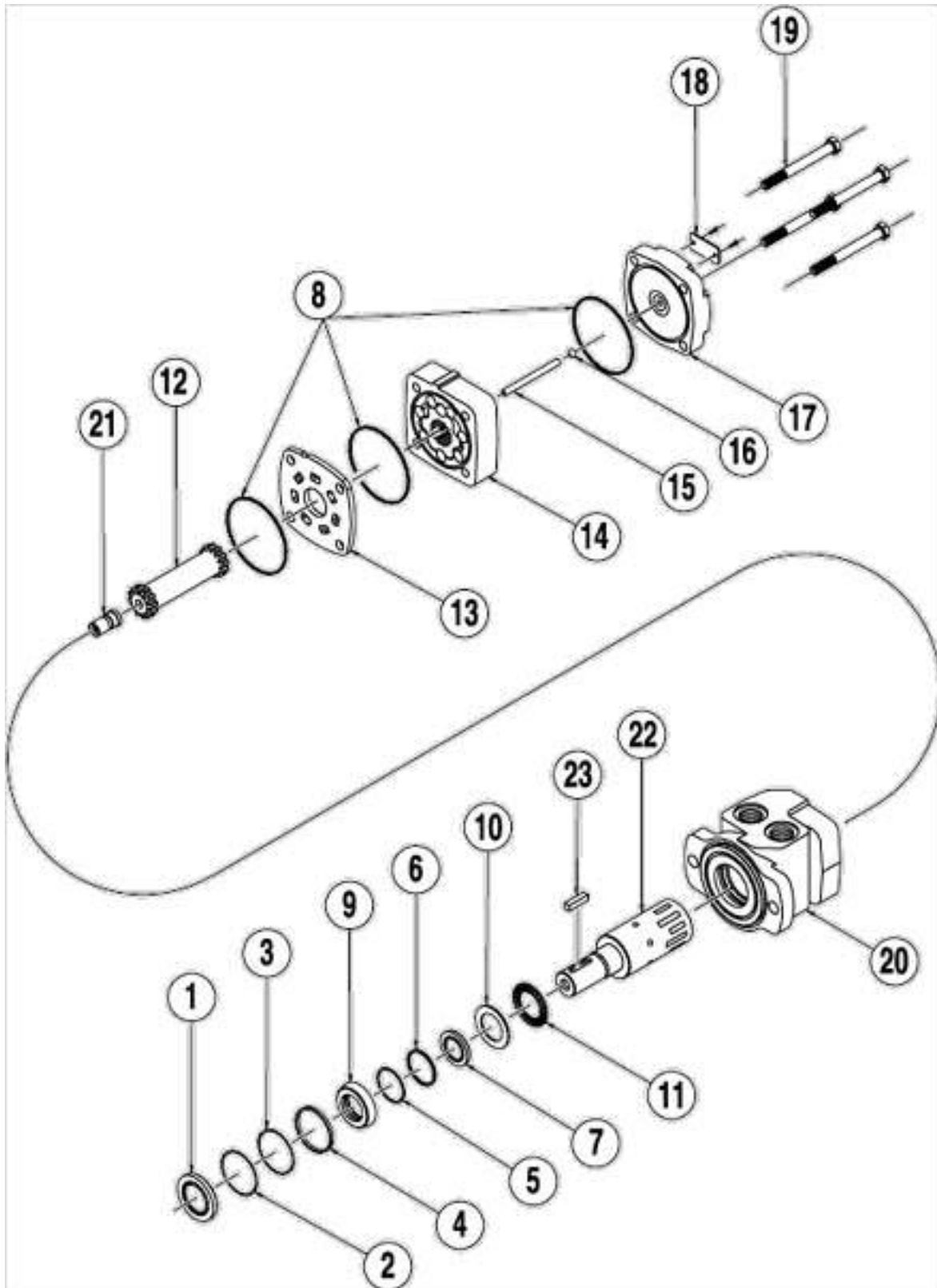
05006549 MOTOR, HYDRAULIC, WHITE, 10 CI, 4 BOLT



MOTOR ASSEMBLY PARTS LIST

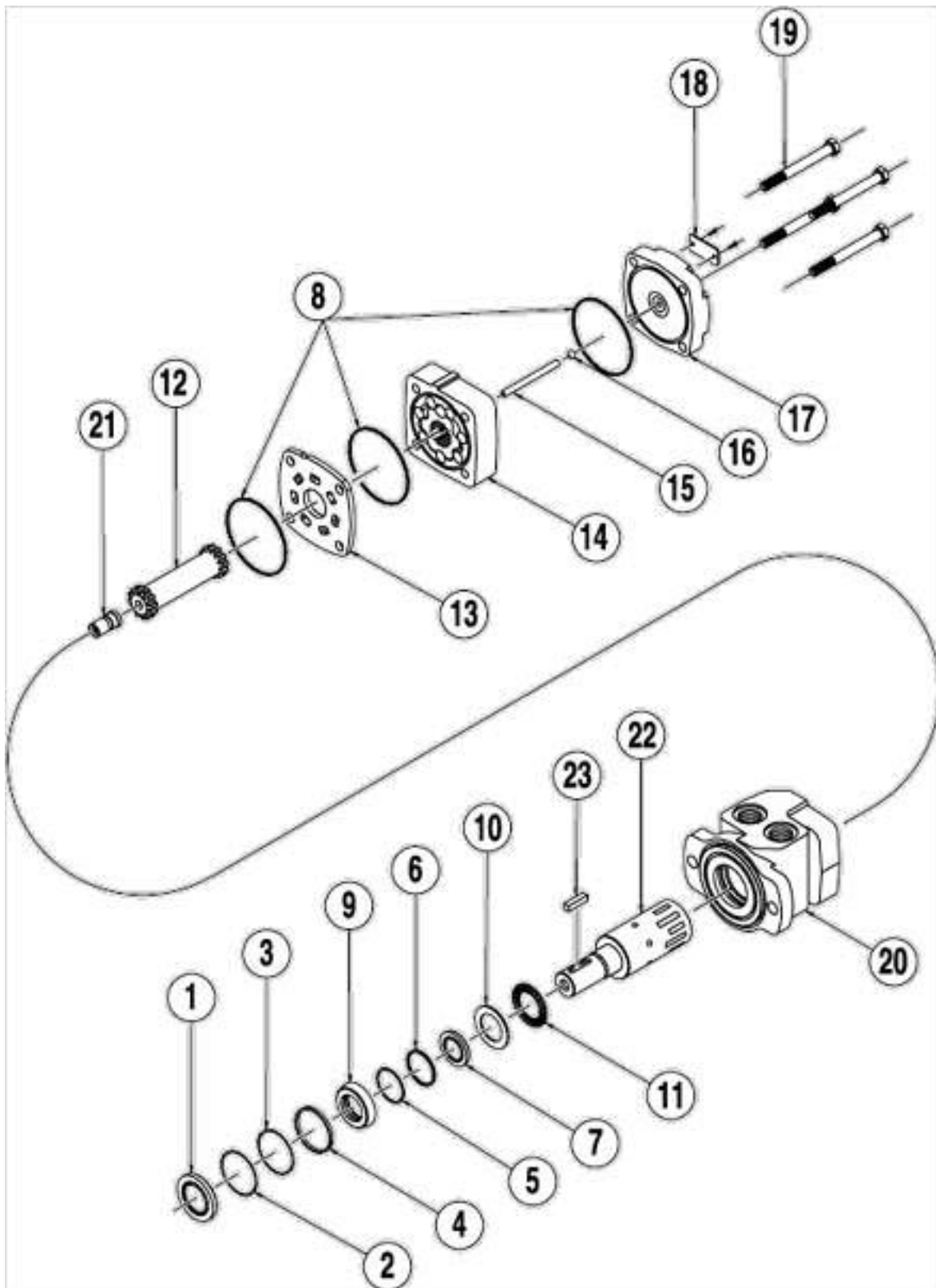
Item	Part Number	Description
1	Seal Kit 05006415	Dust Seal
2		Split Wire Ring
3		Metal Backup Shim
4		High Pressure Seal
5		Metal Backup Shim
6		Teflon Backup Shim
7		Shaft Seal
8		Body Seals (3)
9	Seal Kit	Seal Carrier
10	05006516	Thrust Washer
11	05006357	Thrust Bearing
12	05006366	Drive Link Kit
13	05006359	Wear Plate
14	05006082	Rotor Kit
15	05006081	Drive Link Pin Kit
16	---	Included in item #15 Drive Link Pin Kit
17	05006360	End Cover
18	---	Serial Number Plate
19	05006064	Bolt Set Kit
20	05006564	Housing Kit, 4-Hole, w/ 7/8" O-Ring
21	05006358	Cooling Plug
22	05006370	Shaft Kit, 1" Straight
23	05006371	Key Kit, 1" Straight

05006556 MOTOR, HYDRAULIC, WHITE, 24 CI, 4 BOLT



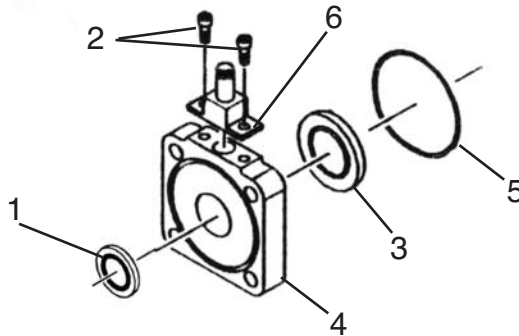
MOTOR ASSEMBLY PARTS LIST

Item	Part Number	Description
1	Seal Kit 05006415	Dust Seal
2		Split Wire Ring
3		Metal Backup Shim
4		High Pressure Seal
5		Metal Backup Shim
6		Teflon Backup Shim
7		Shaft Seal
8		Body Seals (3)
9	Seal Kit 05006516	Seal Carrier
10	05006357	Thrust Washer
11	05006357	Thrust Bearing
12	05006366	Drive Link Kit
13	05006359	Wear Plate
14	05006365	Rotor Kit
15	05006367	Drive Link Pin Kit
16	---	Included in item #15 Drive Link Pin Kit
17	05006360	End Cover
18	---	Serial Number Plate
19	05006368	Bolt Set Kit
20	05006564	Housing Kit, 2-Hole, w/ 7/8" O-Ring
21	05006358	Cooling Plug
22	05006370	Shaft Kit, 1" Straight Speed Sensor
23	05006371	Key Kit, 1" Straight Speed Sensor



MOTOR ASSEMBLY PARTS LIST

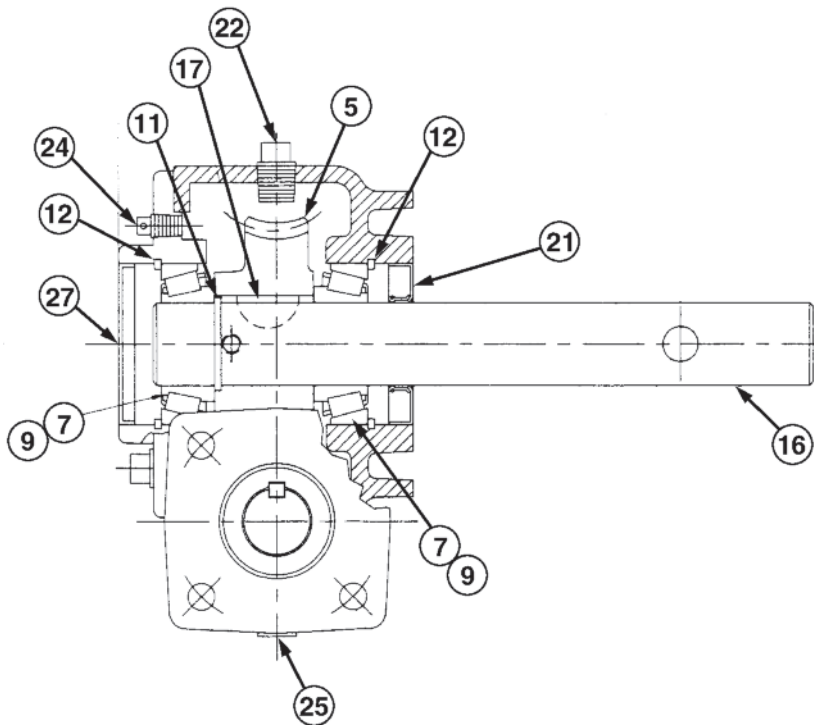
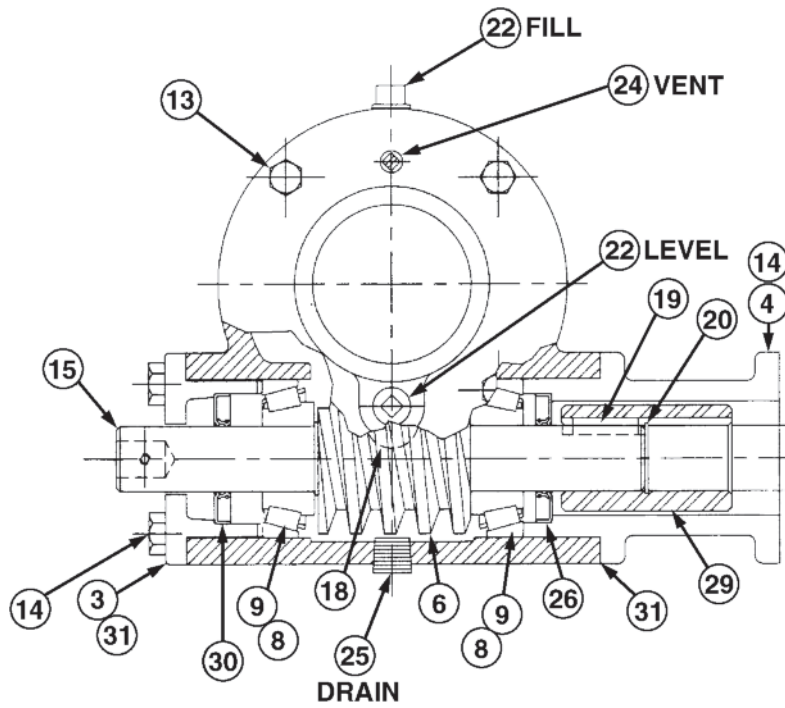
Item	Part Number	Description
1	Seal Kit 05006679	Dust Seal
2		Split Wire Ring
3		Metal Backup Shim
4		High Pressure Seal
5		Metal Backup Shim
6		Teflon Backup Shim
7		Shaft Seal
8		Body Seals (3)
9		Seal Carrier
10		Thrust Washer
11	05006357	Thrust Bearing
12	05006366	Drive Link Kit
13	05006359	Wear Plate
14	05006082	Rotor Kit
15	05006081	Drive Link Pin Kit
16	---	Included in item #15 Drive Link Pin Kit
17	05006360	End Cover
18	---	Serial Number Plate
19	05006576	Bolt Set Kit
20	05006564	Housing Kit, 2-Hole, w/ 7/8" O-Ring
21	05006358	Cooling Plug
22	05006410	Shaft Kit, 1" Straight Speed Sensor
23	05006371	Key Kit, 1" Straight Speed Sensor



SPEED SENSOR KIT

Item	Qty	Part Number	Description
1	1	05006560	Dust Seal
2	2	05006561	Sensor Attachment Screw
3	1	05006600	Sensor Magnet
4	1	05006418	4-Hole Sensor Flange
5	1	05006601	4-Hole Sensor Flange Seal
6	1	05006629	Speed Sensor ONLY - 100 Pulse

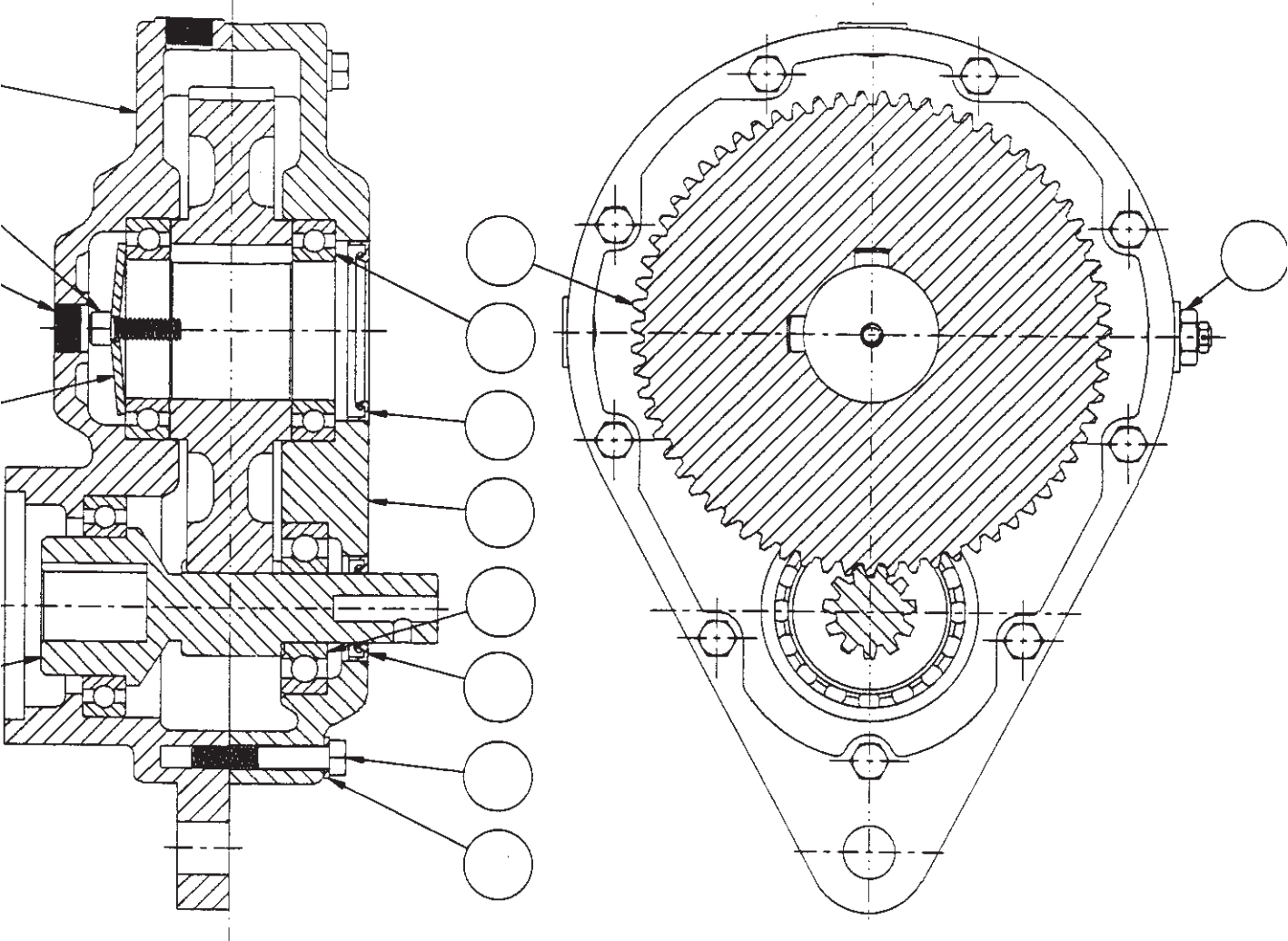
05007040 -- GEARBOX ASSEMBLY, 5:1, CAST IRON



GEARBOX ASSEMBLY PARTS LIST

ITEM	QTY	PART #	DESCRIPTION
1	1	05007084	Housing
2	1	05007041	Cover
3	1	05051291	End Cap, Open
4	1	05051292	Hydraulic Adapter, 4-Bolt
5	1	05007044	Worm Gear
6	1	05051320	Worm
7	2	05007054	Cone, Bearing
8	2	05007055	Cone, Bearing
9	4	05007056	Cup, Bearing
10	1	05007057	Snap Ring - Input Shaft
11	1	05007058	Snap Ring - Output Shaft
12	2	05007059	Snap Ring
13	4	05007089	Bolt, $\frac{3}{8}$ -16 x $\frac{3}{4}$ "
14	8	05007090	Bolt, $\frac{3}{8}$ -16 x $\frac{7}{8}$ "
15	1	05051344	Shaft, Input
16	1	05051345	Shaft, Output
17	1	05007062	Key, Woodruff, $\frac{5}{16}$ " x 1", "B"
18	1	05007063	Key, Woodruff, "A"
19	1	05051369	Key, Square, $\frac{1}{4}$ " x 1"
20	1	05051340	Snap Ring, Coupling
21	1	05007065	Seal, Output Shaft
22	2	05007067	Plug, $\frac{3}{8}$ -16 NPT
23	1	05007069	Gasket, Side Cover
24	1	05007070	Plug, $\frac{1}{8}$ -27 FNPT, Vent
25	1	05007093	Plug, Drain
26	1	05051373	Seal, Adapter
27	1	05007071	Cap
28	A/R	05007072	Shim, Steel
29	1	05051430	Coupling
30	1	05051486	Seal, End Cap
31	1	05007077	Gasket
32	1	05007126	Screw, $\frac{3}{8}$ -16, Set
33	1	05007226	Cap, Protective
34	1	05007066	Plug, Pipe, Square Head, $\frac{1}{8}$ -27 NPT

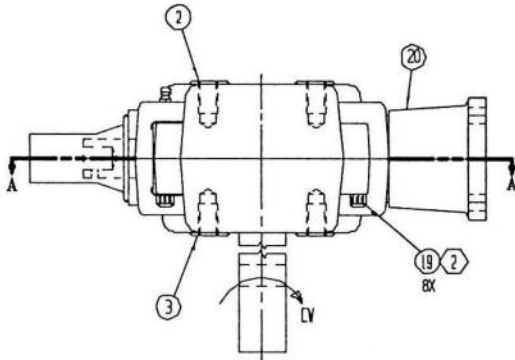
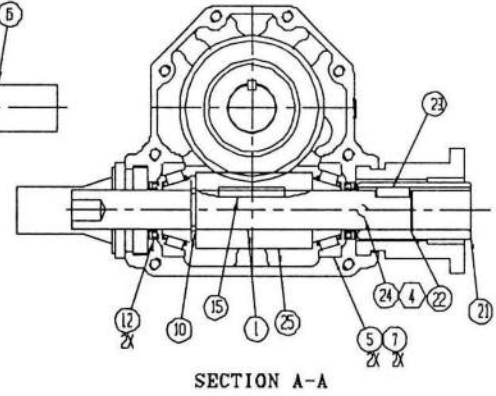
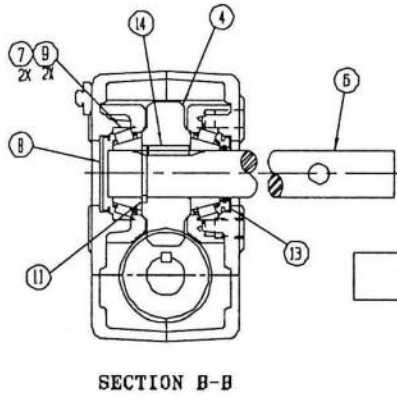
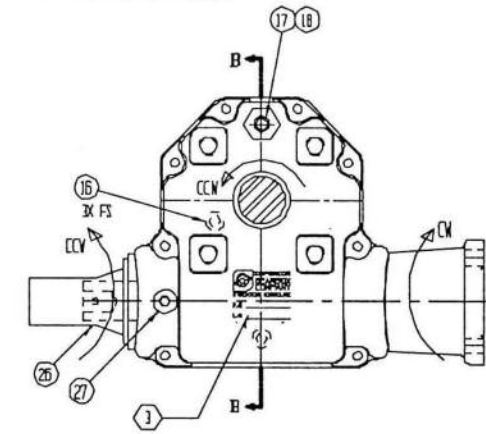
05007040-C -- GEARBOX ASSEMBLY, 5:1



GEARBOX ASSEMBLY PARTS LIST

ITEM	QTY	PART #	DESCRIPTION
1	1	05007278	Oil Seal, Double Lips
2	3	05007279	Tapered Roller Bearing
3	1	05007280	Worm Gear
4	1	05007281	External Circlip
5	3	05007282	Tapered Roller Bearing
6	7	05007283	Plug, ¼ NPT
7	4	05007284	Bolts
8	1	05007285	Plug, ⅜ NPT
9	1	05007286	Housing
10	2	05007287	Internal Circlip
11	1	05007288	Output Shaft
12	1	05007289	Input Worm Shaft
13	1	05007290	Square Key
14	1	05007291	Grease Fitting
15	1	05007292	Ouput Cover
16	1	05007293	Hydraulic Adapter
17	1	05007294	Bushing
18	1	05007295	Internal Circlip
19	1	05007296	Woodruff Key
20	1	05007297	Oil Seal, Double Lip
21	1	05007298	Oil Seal, Double Lip
22	3	05007299	Bolts

05007338 GEARBOX, 5:1, 1.25" SHAFT DIA, 6" LG, 4B



GEARBOX, 5:1, 1.25" SHAFT, DIA, 6"

Item	Qty	Part Number	Description
1	1	05007396	Shaft, Input
2	1	05007397	Housing, Machine, Tap Black
3	1	05007398	Housing, Machine
4	1	05007399	Gear, Worm
5	2	05007381	Bearing, Cone, 1
6	2	05007400	Shaft, Output
7	4	05007383	Bearing, Cup
8	1	05007081	Retaining Ring, Ext 1 Shaft
9	1	05007082	Retaining Ring, Ext 1.25 Shaft
10	1	05051110	Seal, 1-1.499-.25
11	1	05051140	Seal, 1.25-2-.312
12	1	05007384	Key, .25 x .25, 1.080
13	1	05007385	Key, .25 x .25, 1.580
14	5	05007386	Plug, .25-18 NPT
15	1	05007387	End Cap, 2.312-.313
16	1	05051136	End Cap, 2-.312
17	1	05007388	Bushing, .25 x .125
18	1	05007366	Plug, Vent
19	1	05007401	Bolt, .313-18 x 1.25, SHCS
20	8	05007402	Adapter, Hyd, 4-Bolt Mach Blk
21	1	05007083	Coupler
22	1	05007404	Retaining Ring
23	1	05007405	Key, .25 x .25
24	1	05007406	Adapter Pin
25	2	05007407	Gear, Worm Rolled
26	2	05007355	Assy, Adapter/Shaft Guard Worm
27	1	05007390	Zerk, Grease Spin Drive
28	14	05007372	Lube

00037941-A/B CHIPPING ATTACHMENT ASSEMBLY

Item	Qty	Part Number	Description
1	1	01162960-A 01162960-B	SPREADER CHIPPING ATACH WELDMENT, MS SPREADER CHIPPING ATACH WELDMENT, SST
2	1	01162970-A 01162970-B	WING ATTACHMENT WELDMENT, RH, MS WING ATTACHMENT WELDMENT, RH, SST
3	1	00037938-A 00037938-B	WING ATTACHMENT WELDMENT, LH, MS WING ATTACHMENT WELDMENT, LH, SST
4	1	00037916-A 00037916-B	PIPE WELDMENT, LONG MS PIPE WELDMENT, LONG SST
5	2	00037917-A 00037917-B	PIPE WELDMENT, SHORT, MS PIPE WELDMENT, SHORT, SST
6	2	00037909-A 00037909-B	MOUNTING BRACKET WELDMENT, MS MOUNTING BRACKET WELDMENT, SST
7	4	00041156 00041157	STABILIZER ROD ASSEMBLY, MS STABILIZER ROD ASSEMBLY, SST
8	2	00041121 00041122	BAR, STABILIZER, FLAT TRUCK FRAME, MS BAR, STABILIZER, FLAT TRUCK FRAME, SST
9	15	05010690	BOLT, .5-13 X 1.250, G8, HHCS, ZINC
10	2	05010694	BOLT, .5-13 X 2.250, G8, HHCS, ZINC
11	17	05020847	NUT, .5-13, GC, TOP LOCK, C&W
12	11	05021309	WASHER, .5, USS, STD FLAT, ZINC
13	4	05022106	PIN LYNCH, .188

00068095-A/B GATE KIT, POLY FINGERS, MS96-RS, SPREADERS, 96" ROLL

Item	Qty	Part Number	Description
1	2	00023241-A 00023241-B	ADJUSTER WELDMENT, GATE, MS-RS, MS ADJUSTER WELDMENT, GATE, MS-RS, SST
2	1	00023219-A 00023219-B	WEARSTRIP, FRONT, UT, MS96-RS, MS WEARSTRIP, FRONT, UT, MS96-RS, SST
3	1	00026590-A 00026590-B	WEARSTRIP, GATE, MS96-RS, MS WEARSTRIP, GATE, MS96-RS, SST
4	4	00039415-A 00039415-B	MOUNT, PLASTIC FINGERS, MS96-RS, MS MOUNT, PLASTIC FINGERS, MS96-RS, SST
5	1	00039416-A 00039416-B	STIFFENER, PLASTIC FINGER, MS96-RS, MS STIFFENER, PLASTIC FINGER, MS96-RS, SST
6	4	05050276	BAFFLE, WHITE UHMW, F/ ROLL SPREADER
7	2	05035053	SPRING, COMPRESSION, HYD LOCK CYLINDER
8	10	05013986 05016003	BOLT, .375-16 X 1, G5, CARRIAGE, ZINC BOLT, .375-16 X 1, CARRIAGE, SST
9	12	05013987 05016746	BOLT, .375-16 X 1.25, G5, CARRIAGE, ZINC BOLT, .375-16 X 1.25, CARRIAGE, SST
10	12	05010644 05016049	BOLT, .375-16 X 1.25, G8, HHCS, ZINC BOLT, .375-16 X 1.25, HHCS, SST
11	2	05010691 05016096	BOLT, .5-13 X 1.50, G8, HHCS, ZINC BOLT, .5-13 X 1.50, HHCS, SST
12	34	05020266 05020842	NUT, .375-16, G8, HEX, ZINC NUT, .375-16, HEX, SST
13	2	05020847 05020908	NUT, .5-13, GC, TOP LOCK, C&W NUT, .5-13, NYLON LOCK, 316 SST
14	8	05020268 05020848	NUT, .5-13, G8, HEX, ZINC NUT, .5-13, HEX, SST
15	34	05021365 05021392	WASHER, .375, LOCK, ZINC WASHER, .375, LOCK, SST
16	10	05021307 05021390	WASHER, .375, FLAT, ZINC WASHER, .375, FLAT, SST
17	4	05021309 05021391	WASHER, .5, FLAT, ZINC WASHER, .5, FLAT, SST

HOW TO ORDER PARTS

To order or inquire about replacement parts, please contact the **distributor** or **store** that the product was purchased through. To speed the information flow, please have the following information ready:

- Model Number
- Serial Number
- Part Number and/or description as per the parts manual
- Quantity needed

For further information about **Monroe Truck Equipment** replacement parts, please call 877-834-9049 and ask for **Snow & Ice Parts Sales**.

RETURN POLICY

Merchandise returned to **Monroe Truck Equipment** must have a Returned Goods Authorization (RGA) form filled out completely and signed by authorized personnel. To get your RGA form, call 800-880-0109. For whole goods, ask for **Snow & Ice Sales**. For replacement parts, ask for **Snow & Ice Parts Sales**. All returned items are subject to a 15% restocking fee and must be sent freight prepaid!

MONROE TRUCK EQUIPMENT, INC. WARRANTY SNOW & ICE CONTROL PRODUCTS

Monroe Truck Equipment, Inc. warrants to the original purchaser, that if any part of the product proves to be defective in workmanship or material within **ONE YEAR** of the original installation, and is returned to us within 30 days of the discovered defect, we will (at our option) repair or replace the defective part. This warranty does not apply to damage resulting from misuse, neglect, accident, improper installation, normal wear items or lack of maintenance. This warranty is exclusive and supersedes all other warranties, whether expressed or implied. **Monroe Truck Equipment, Inc.** neither assumes, nor authorizes anyone to assume for it, any other obligation or liability in connection with this warranty and will not be liable for consequential damages.

All engines, pumps, motors, cylinders and valves are warranted by their manufacturer and not by **Monroe Truck Equipment, Inc.**. The manufacturer's warranty will apply to these parts. Electrical and hydraulic components are not to be disassembled without the express written permission of Monroe Truck Equipment. Use of replacement parts other than original equipment voids this warranty.

All defective parts returned must be accompanied by the model number, serial number, date installed, date of defect, description of defect, and the name of the distributor from whom it was purchased. All warranty claims must have prior written approval from **Monroe Truck Equipment, Inc.**

Please return the warranty registration card that accompanies this manual to confirm receipt of this parts catalog and acknowledge the information contained within. Failure to return the attached card may result in a voided warranty.



1051 West 7th Street
Monroe, WI 53566
608-328-8127 ~ Fax: 608-328-4278

Warranty Policy

Uninstalled Parts and Equipment Provided by Monroe Truck Equipment

Monroe Truck Equipment will provide the following limited warranty for a period of one year to the original purchaser of all uninstalled goods provided by Monroe Truck Equipment:

LIMITED WARRANTY: All goods provided by Monroe Truck Equipment (MTE) will be free from defects in material and workmanship for a period of one year from the date of purchase by the original purchaser. This limited warranty shall be the sole and exclusive remedy for any such product found to be defective. This limited warranty supercedes all previous warranties and is exclusive and in lieu of all other warranties, whether expressed or implied.

This limited warranty applies only to parts or accessories manufactured by MTE and/or provided by same. Except with respect to title, this limited warranty does not pertain to parts or accessories not manufactured and/or provided by MTE, regardless of whether such parts or accessories were selected and/or recommended by MTE. MTE will, as a service to the buyer, pass on any warranties received from the original manufacturer of MTE provided parts and/or accessories.

MTE will not under any circumstances be liable for any incidental or consequential damages whether in tort, contract, or otherwise, for any bodily injury, death, property damage, loss of use, or loss of income resulting from or in any way arising out of any goods provided by MTE, or their sale, use, or manufacture.

Any warranty claim deemed to be arising from the result of misuse, abuse, neglect, accident, improper installation, lack of maintenance, act of war (whether declared or otherwise), or act of God will be denied. Any repair or modification by the buyer or any third party, without the prior written consent of MTE, will void any possible warranty compensation. Any damage deemed to be the result of abnormal operation will not be compensated by this warranty.

Normal or special maintenance items such as fuels, fluids, tires, belts, hoses, filters, air cleaners, light bulbs, and any other items subject to normal wear and tear that are supplied in connection with goods provided by MTE are not allowed under this warranty.

All engines, pumps, cylinders, valves, and motors are warranted by their manufacturer and not by Monroe Truck Equipment. The manufacturer's warranty will apply to these parts. Electrical and hydraulic components are not to be disassembled without the express written consent of MTE. Any disassembly of MTE provided components without prior authorization will void the applicable warranty.

Monroe Truck Equipment shall be the sole and final determining authority as it applies to the administration of this warranty policy. Purchaser acknowledges receipt of Monroe Truck Equipment Warranty Policy and agrees to be bound by same.



GLOBAL SOLUTIONS
ARMORED VEHICLES ~ SPORT TRUCK CONVERSIONS
MUNICIPAL SNOW & ICE CONTROL ~ FIRE APPARATUS
PICKUP TRUCK ACCESSORIES ~ TRUCK EQUIPMENT/MODIFICATIONS





1051 West 7th Street
Monroe, WI 53566
608-328-8127 ~ Fax: 608-328-4278

Any and all warranty claims must be forwarded to MTE within 10 days of defect discovery. A copy of the original Monroe Truck Equipment invoice as well as the manufacturer's model number, serial number, and date of installation must accompany all correspondence regarding said claims. MTE will, at their option, choose whether to repair or replace the defective part unless otherwise specified by the original manufacturer of said part.

Procedures for Warranty Claims Notification

For submission of any warranty claim please contact Monroe Truck Equipment – Warranty Department at 800-356-8134

The following documentation will be needed when you call for initial warranty authorization:

1. A copy of the original MTE invoice.
2. Make, Model, and VIN or Serial Number of the equipment involved.
3. Part number and serial number of the part in question.
4. A complete description of the problem.

The following must accompany any claim submitted to Monroe Truck Equipment:

1. Documented photographs of any physical damage.
2. Inspection notes by MTE personnel or MTE authorized 3rd party.
3. Authorization number issued by Monroe Truck Equipment – Warranty Department.

Defective parts must be returned to Monroe Truck Equipment (freight prepaid) within 30 days of issuance of Authorization Number.

Monroe Truck Equipment reserves the right to void any warranty for failure to comply with Monroe Truck Equipment Warranty Policy.

This policy is effective October 11, 2012

