



SALT SLURRY GENERATOR/ ROLLER MILL SPINNER

Service and Parts Manual



Monroe Snow & Ice Control

A Division of Monroe Truck Equipment

1051 W. 7th Street

Monroe, WI 53566

Phone: 608-328-8127

Fax: 608-329-8488

Website: www.monroetruck.com

Email: snowandicecontrol@monroetruck.com

05090350-14

8/17/2015



TABLE OF CONTENTS

Safety Instructions	2-3
Maintenance Instructions	4
Installation Instructions	5-6
Operating Instructions.	7-9
General Information	10
Replacement Parts	12-35
How to Order Parts	36
Return Policy	36
Warranty Registration	37-39

SAFETY INSTRUCTIONS

- Read all installation, safety and maintenance instructions completely before operating this equipment
- Keep all personnel clear of moving parts while equipment is being operated.
- Do not operate equipment in need of maintenance! Repair immediately!
- While operating this equipment, use common sense, use caution, be alert and be safety-conscious.



! DANGER

AVOID HIGH-PRESSURE FLUIDS

Escaping fluid under pressure can penetrate the skin causing serious injury.

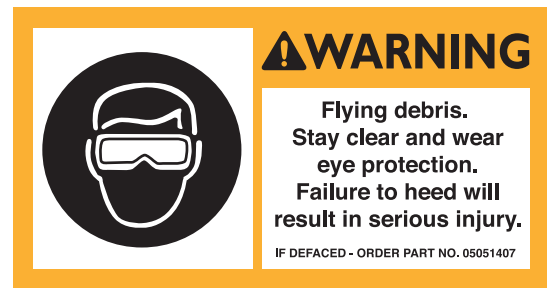
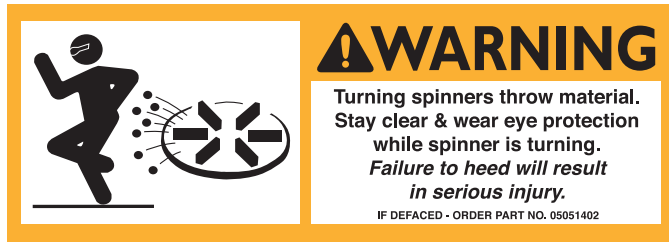
Avoid the hazard by relieving pressure before disconnecting hydraulic or other lines. Tighten all connections before applying pressure.

Search for leaks with a piece of cardboard. Protect hands and body from high pressure fluids.

If an accident occurs, see a doctor immediately. Any fluid injected into the skin must be surgically removed within a few hours or gangrene may result.

SAFETY DECALS

Item	Qty	Part Number	Description
1	1	05051402	DECAL, WARNING: TURNING SPINNERS THROW MATERIAL
2	4	05051403	DECAL, MOVING PARTS CAN CRUSH & DISMEMBER
3	1	05051404	DECAL, CAUTION: #1-#6
4	2	05051407	DECAL, WARNING: FLYING DEBRIS
5	2	05052310	DECAL, DANGER: KEEP ALL GUARDS/SHIELDS IN PLACE



MAINTENANCE INSTRUCTIONS

Due to the nature of use and environment this spreader is operating in, damage and wear may occur at any time. Therefore, **Monroe Truck Equipment** recommends the end user establish and follow a daily inspection routine before using this spreader. Failure to inspect equipment on a daily basis may seriously affect safety and/or efficiency.

CAUTION: Always make sure equipment has been shut off and properly secured and locked out before any maintenance has started.

CAUTION: Always replace shields and covers when maintenance is complete.

- Allow hydraulic system to warm up before using.
- Clean quick disconnects before taking apart or connecting.
- Rinse and clean spinner after each use, repaint or oil after each season, to greatly prolong life.
- Keep hopper and rollers clear when not in use to prevent clogging from frozen or settled material.
- Periodically grease roller slides for easier operation.
- Check rollers before each use for chips and or excessive wear. Re-cut or replace as needed. Contact manufacturer for re-cutting.
- Grease all bearing periodically and more frequent during periods of greater use. See Bearing Lubrication Chart.
- Periodically check for loose or worn bolts. Tighten or replace as needed. See Torque chart.

BEARING LUBRICATION CHART

All bearing units are factory prelubricated and, therefore, do not require supplemental grease before service life begins. Relubrication, when administered correctly, can increase the life of a bearing substantially. We recommend the following general guidelines to maximize your bearing life:

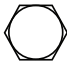


RPM	Temperature	Environmental Condition	Interval
100 500 1,000	32°F-120°F 32°F-150°F 32°F-210°F	Clean Clean Clean	6-12 months 2-6 months 2 wks to 2 months
1,500 Any	Over 210°F 32°F-150°F	Clean Dirty	Daily to weekly Weekly to monthly
Any Any	Over 150°F Any Temp.	Dirty Very Dirty	Daily to 2 wks Daily to weekly
Any	Any Temp.	Extremely Dirty	Daily to weekly

NOTE:

Over lubrication is a major cause of bearing failures. Please relubricate conservatively when unsure of bearing requirements.

When selecting a bearing lubricant, your dealer suggest any lithium-based NLGI #2 grease. For operating temperatures higher than 210°F, please consult your dealer.

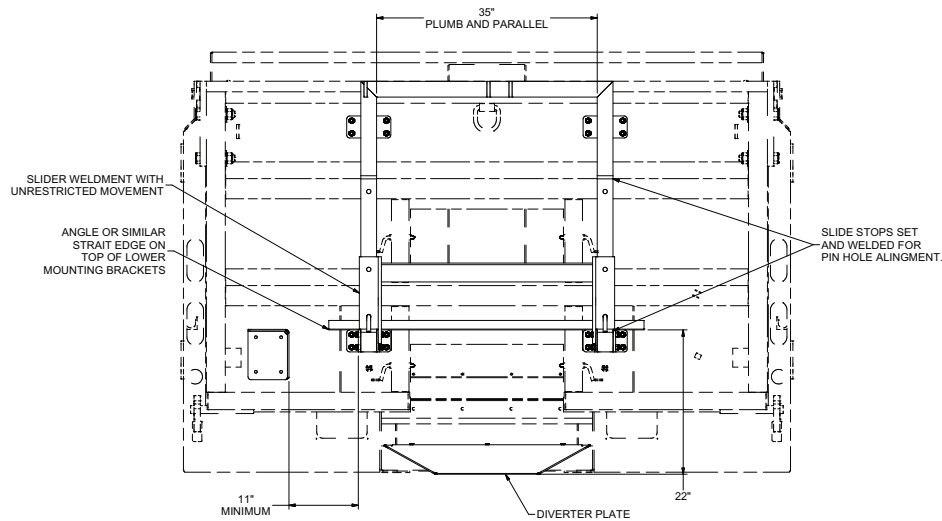
TORQUE CHART

SIZE	 GRADE 2	 GRADE 5	 GRADE 8
1/4-20	50 IN-LBS	75 IN-LBS	9 FT-LBS
3/8-16	15 FT-LBS	23 FT-LBS	35 FT-LBS
1/2-13	35 FT-LBS	55 FT-LBS	80 FT-LBS
5/8-11	75 FT-LBS	110 FT-LBS	170 FT-LBS
3/4-10	130 FT-LBS	200 FT-LBS	280 FT-LBS
1-8	190 FT-LBS	480 FT-LBS	680 FT-LBS
1 1/4-7	380 FT-LBS	840 FT-LBS	1,360 FT-LBS

INSTALLATION INSTRUCTIONS

RDS MOUNTING

1. Mount the body diverter plate to the RDS rear cross member by welding or with supplied hardware. The diverter plate should be centered between the body long members and protrude past the rear panel approximately 1" to 1-1/2".
2. Position the mounting kit centered on the body and 22" up from the bottom of the diverter plate to the top of the lower mounting brackets. The slide tubes should be plumb, parallel and 35" apart. An angle or similar strait edge placed on top of the lower mounting brackets can be used to aid in measuring.
4. Check slide weldment for free unrestricted movement. Make sure mounting kit is plumb and parallel. Adjust if necessary. Drill $\varnothing.563$ holes through tailgate at mounting bracket locations. Bolt mounting kit to tailgate with supplied hardware.
5. With the slider weldment pinned in the lowered positions, locate and weld the slide stops on the bottom. Repeat with slider pinned in the raised position with the slide stop on the top.
6. Weld or bolt the winch mounting bracket to the tailgate. It should be position for easy operation and a minimum of 11" away from the slide tubes for winch handle clearance. Mount winch, cable and spinner assembly to mounting kit.

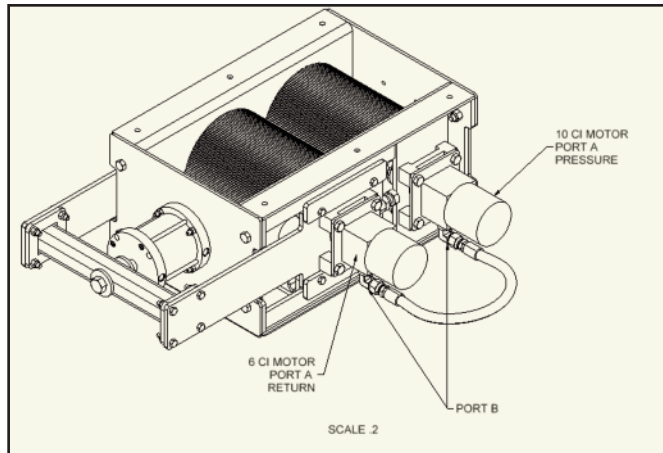


INSTALLATION INSTRUCTIONS

HYDRAULICS

The roller mill requires a hydraulic capacity of 7-12 GPM to drive the rollers. Connect the pressure line to the “A” port of the forward 10 cubic inch motor and the return line to the “A” port of the rearward 6 cubic inch motor. Use a minimum of 1/2” inner diameter hose for the return line. The motor ports are 7/8-14 ORB. Couplers can be used in the installation for ease of operation.

CAUTION: Hydraulics should not exceed 2030 PSI and 12 GPM or damage to the motors may occur.



PNEUMATICS

The roller mill requires an air supply of 80-120PSI continuous pressure to operate the air cylinder that opens and closes the rollers.

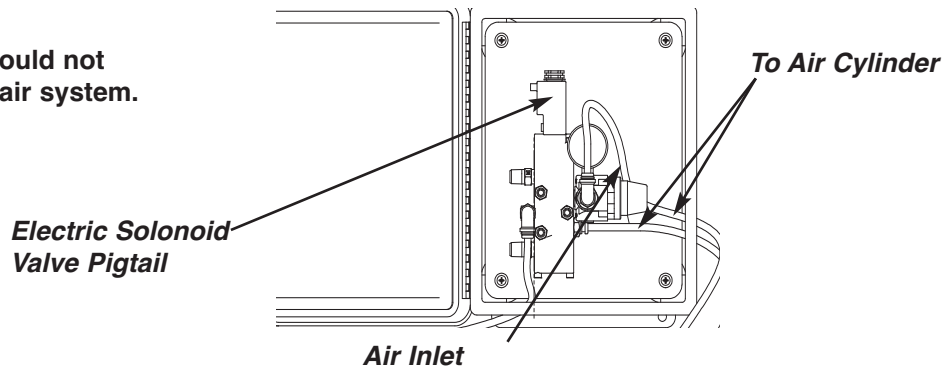
AIR SUPPLY

1. Install manifold for the supplied glad-hand or other quick connector in desired location at rear of truck near roller mill.
2. Locate truck air supply. Install a break protection valve (not supplied) between the air supply and the manifold with connector.
3. Trim supplied hose to appropriate length to reach from the truck manifold with connector to the roller mill plumbing kit inlet. Attach hose to plumbing kit inlet through a hole in the bottom of plumbing kit enclosure. Attach supplied glad-hand or other quick connector to connect to the truck.

12VDC ELECTRICAL SUPPLY

1. Install a fused on/off DPDT switch (not supplied) in truck cab. Position switch for convenient operator use. Wire 12VDC power and ground to the switch.
2. Install 14ga. wires from switch to a weather tight connector at rear of truck near roller mill.
3. Connect wires through a hole in the bottom of the roller mill plumbing kit from the electric solenoid valve pigtail to a weather tight connector to connect to the truck. Make sure to protect wires against damage and chafing.
4. Wire switch to operate the roller mill hydraulic valve so the hydraulic and pneumatic systems are engaged and disengaged at the same time.

CAUTION: Supplied pressure should not exceed 120PSI or damage to the air system.



OPERATING INSTRUCTIONS

The roller mill is designed to break up and crush material into a finer particle size to increase its surface area and volume. This improves Pre-Wet application and increases road coverage. This effect leads to more efficient material use and improved, faster results.

The roller mill uses the momentum of the spinning rollers to crush material. This requires that the rollers be within the required operating RPM ranges before they are closed and material introduced. For normal start up function the control system must delay between the start of the hydraulic motors to spin the rollers and the retracting of the air cylinder to close them. For normal shut down function no delay is required.

The roller mill is designed to operate in two modes, Closed-Active and Open-Inactive

Closed-Active: The rollers closed and activated with spinner casting crushed material. This is the standard operating mode for spreading material.

Open-Inactive: The rollers opened and inactivated with spinner casting non-crushed material. This mode can be used when non crushed material is desired to be cast or as a bypass in case of a major failure to the roller crushing mechanism.

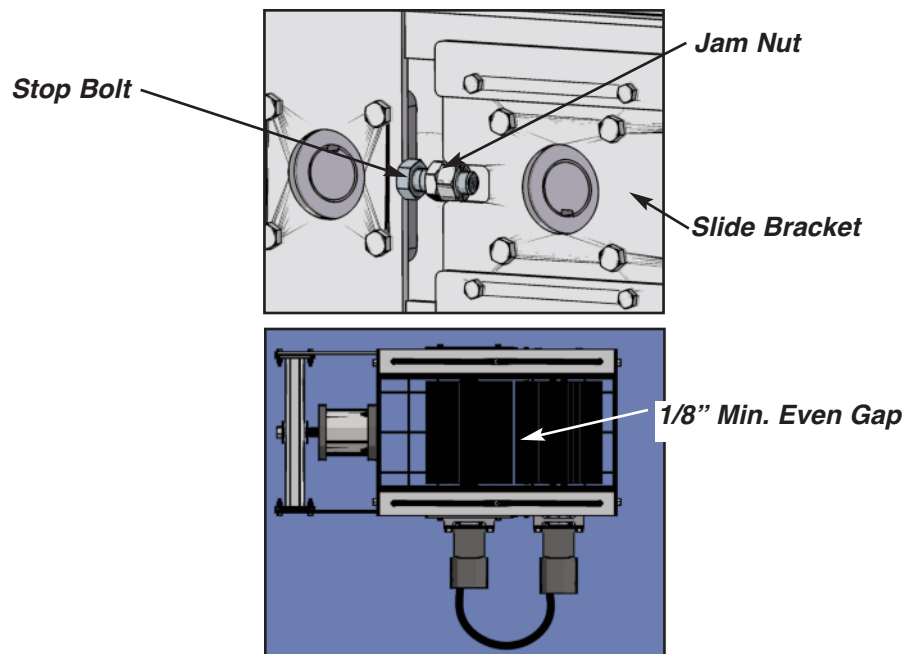
ROLLER GAP ADJUSTMENT

The crushed size of the material depends largely on the gap width between the rollers. This gap must be set for the type of material being used and the desired crushed material size. This is set by the stop bolts located on each side of the roller mill. It is important to note that the rollers run at different RPM's and therefore can never touch and or have their teeth mesh. There should be a minimum of a 1/8" gap between the rollers.

NOTE: The rollers should never touch and or have their teeth mesh.

ADJUSTMENT

1. Make sure roller mill hydraulics and air supply are shut off and properly locked out.
2. Loosen jam nuts for stop bolts.
3. Adjust stop bolts equally to desired roller gap, no less than 1/8".
4. With slide brackets in contact with stop bolts, check roller gap and make sure it is even and rollers are not out of square with each other or the housing assembly.
5. Tighten jam nuts for stop bolts.

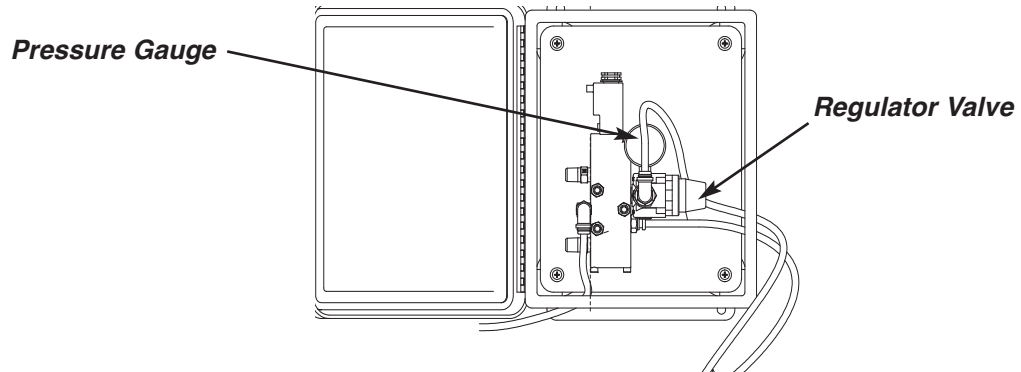


OPERATING INSTRUCTIONS

AIR PRESSURE REGULATOR ADJUSTMENT

The roller mill is equipped with an air pressure regulated cylinder to open and close the rollers. The cushion of air within the cylinder acts as a shock absorber, allowing the rollers to float open and closed as material is crushed. Lower air pressure will crush material less but allow larger debris to pass through rollers. Higher air pressure will crush material more but only allow smaller debris to pass through the rollers. The air pressure should be adjusted for the type of material and the amount and size of debris. Start with 30-40 psi and make adjustments for best results. Optimal pressure should allow the material to be crusher to the desired size while allowing for the largest debris to pass through rollers without causing the unit to seize.

NOTE: Higher air pressure and large debris can cause rollers to seize.



OPERATING INSTRUCTIONS

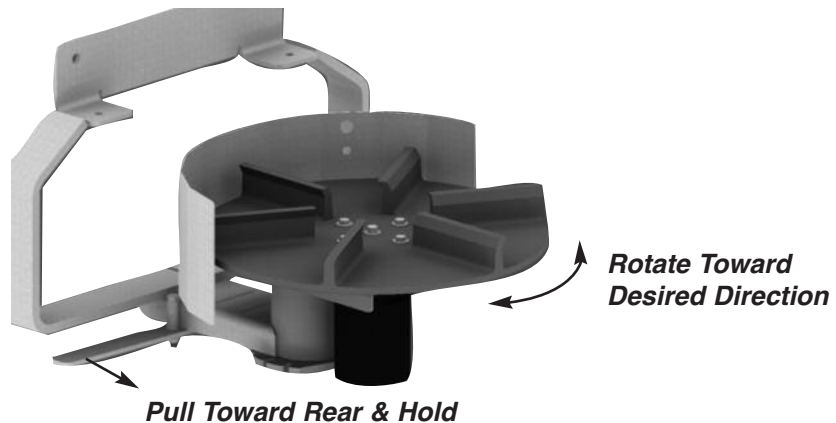
SPINNER ADJUSTMENT

The spinner is capable of rotating 220° at 8 intervals of 27.5°, creating an adjustable material cast pattern. This allows for the material to be concentrated in a desired cast direction; left, center, and right.

ADJUSTMENT

- Make sure spinner hydraulics are shut off and properly locked out.
- Pull adjustment lever toward rear of spinner and hold.
- Rotate spinner toward desired material direction.
- Release adjustment lever. Make sure spinner is locked into position.

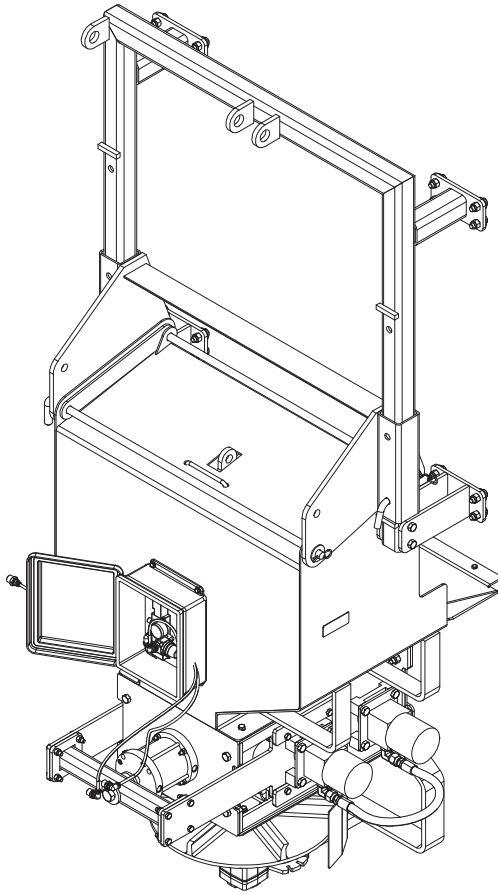
CAUTION: Supplied hydraulics should not exceed 2750 PSI and 15 GPM or damage to the motors may occur.



GENERAL INFORMATION

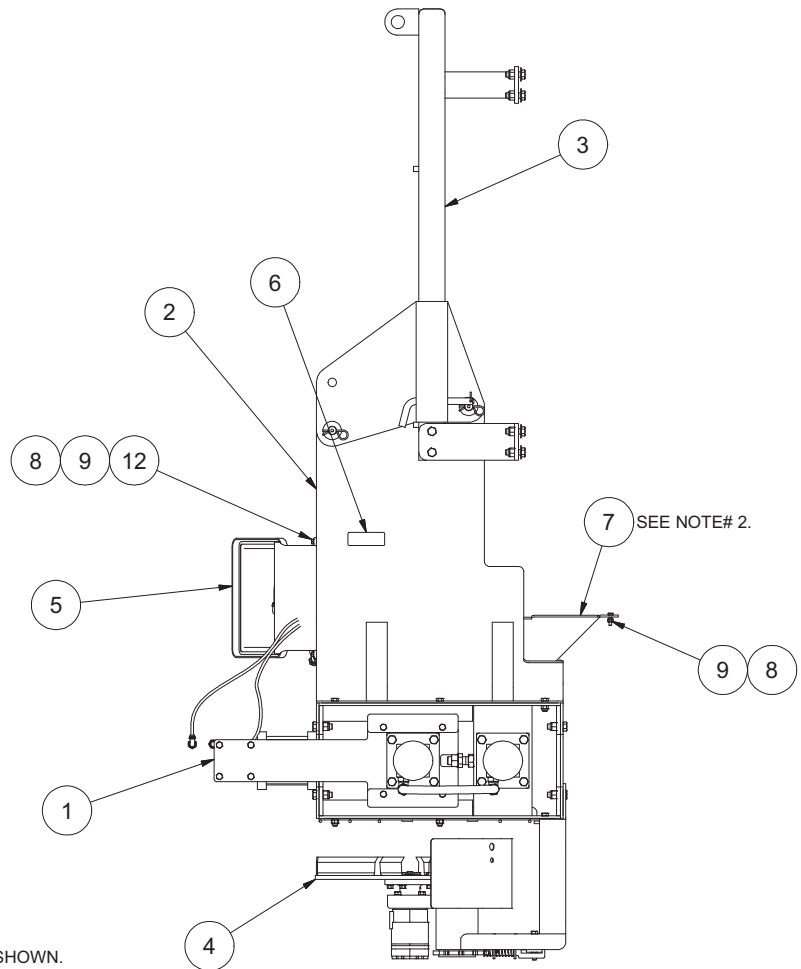
- Location descriptions are noted in direction of travel. (i.e. front, rear, left and right.)
- Delivery of replacement parts is subject to our sales delivery terms.
- Use only **Monroe Truck Equipment** O.E.M. replacement parts. Failure to do so will void warranty.
- Replacement parts listed in this manual reflect our most common items. If you do not find the part you require, please call your distributor.
- **Monroe Truck Equipment** reserves the right to make revisions or alterations to this parts manual without notice.

This page intentionally left blank.



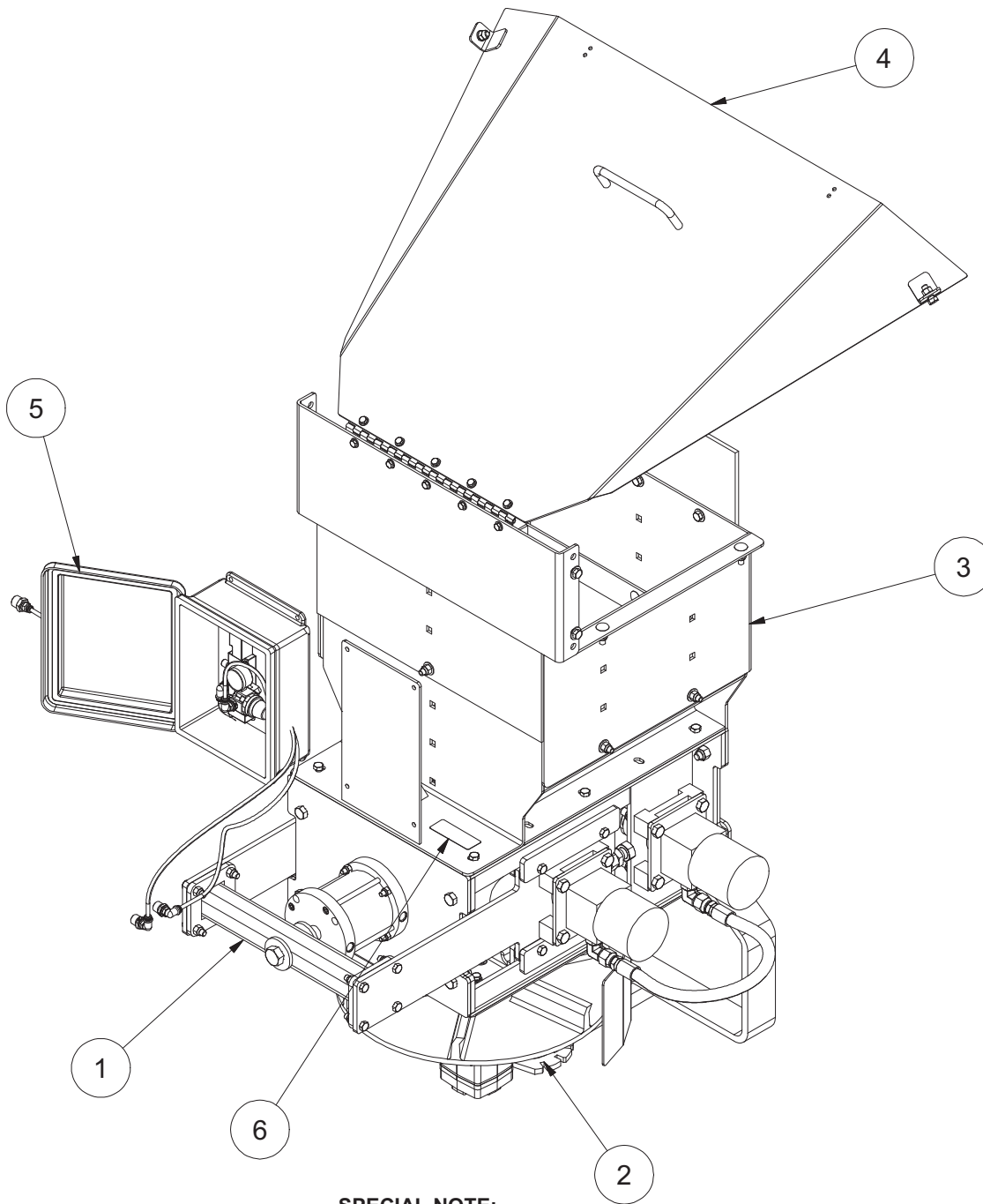
SPECIAL NOTES:

1. ITEMS# 10 AND 11 ARE NOT SHOWN.
2. BOLT DIVERT PLATE TO THE BODY REAR CROSS MEMBER.
3. CENTER ON CONVEYOR OF BODY.
MOUNT HEIGHT TO BE DETERMINED BY
CHUTE AND DIVERTER PLATE ALIGNMENT.



00112264 SPINNER ASSEMBLY, ROLLER MILL,RDS TIP-UP

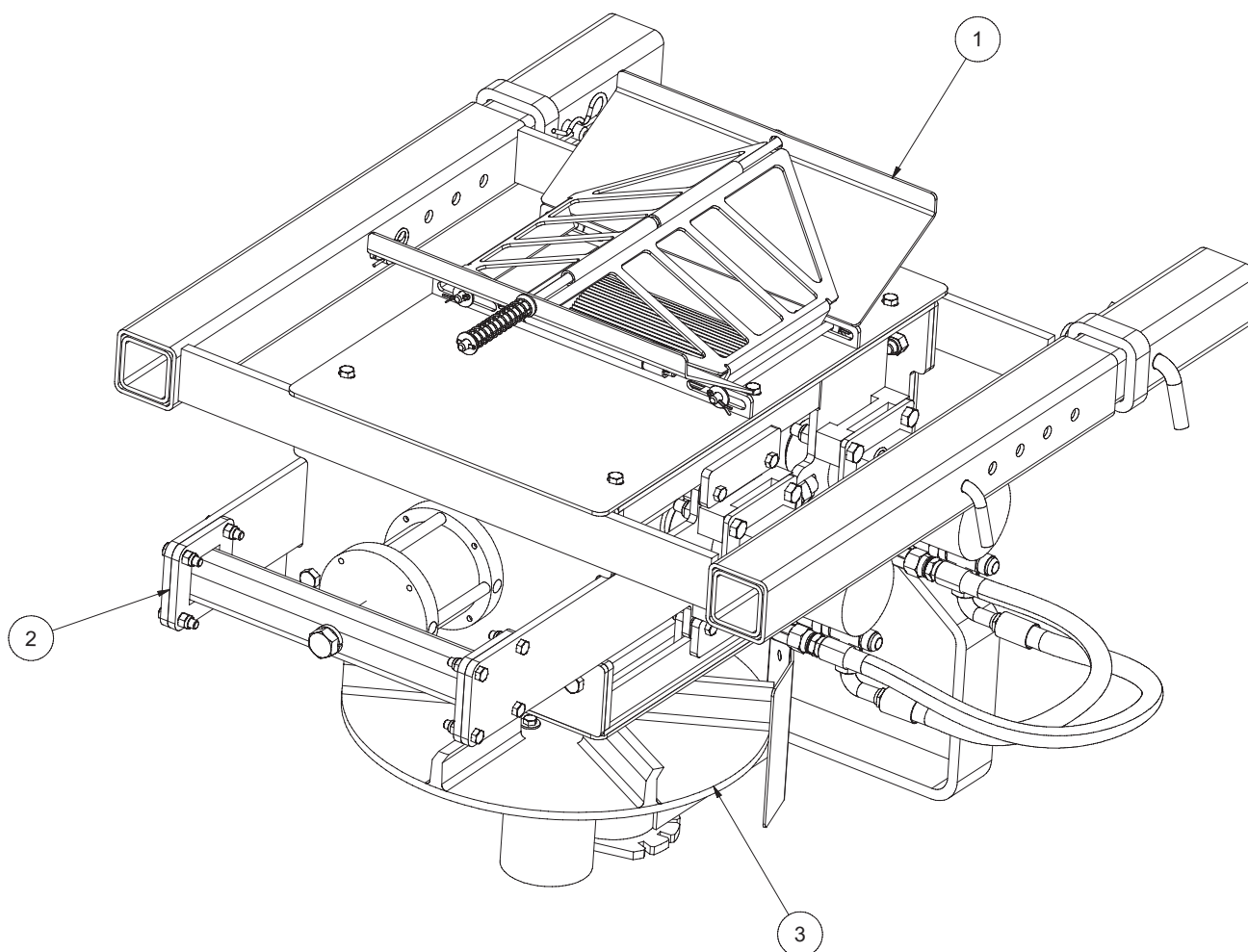
Item	Qty	Part Number	Description
1	1	00116683	ROLLER MILL ASSEMBLY <i>See Page 16-17</i>
2	1	00124149	CHUTE ASSEMBLY, RDS, TIP-UP <i>See Page 19</i>
3	1	00124150	MOUNTING KIT, SPINNER ASSY <i>See Page 22</i>
4	1	00124175	SPINNER ASSEMBLY, ROLLER MILL <i>See Page 21</i>
5	1	00118684	PLUMBING KIT, AIR, ROLLER MILL <i>See Page 25</i>
6	1	05050095	TAG, SERIAL NUMBER
7	1	00124152	DIVERTER PLATE, BODY <i>See Page 26</i>
8	3	05016040	BOLT, .25 -20 X 1, HHCS, SST
9	3	05020906	NUT, .250-20, NYLON LOCK, 316 SST
10	1	00125313	WINCH KIT, 1500# W/ BRAKE <i>See Page 27</i>
11	1	00065209	NOZZLE KIT, HYDR UNIT, 3GPM <i>See Page 28-29</i>
12	1	05090350	MANUAL, SPINNER, ROLLER MILL



SPECIAL NOTE:

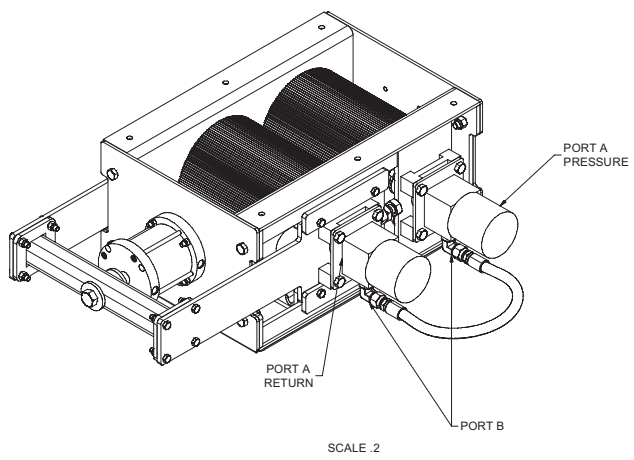
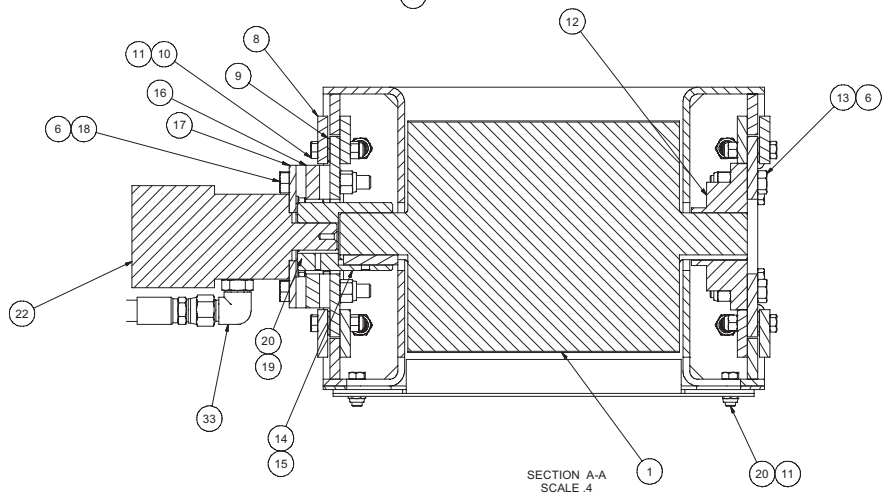
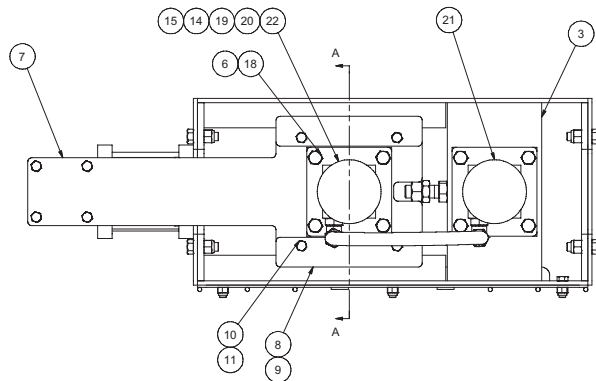
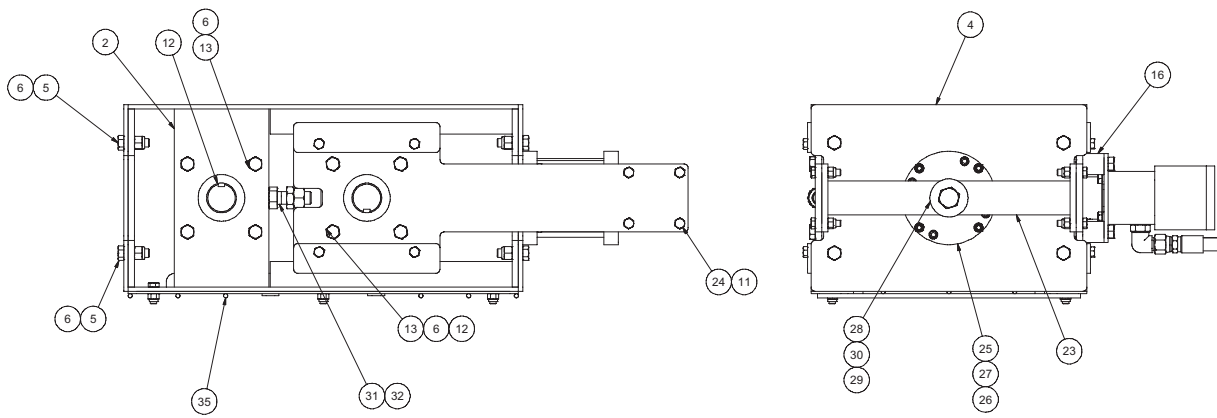
1. ITEM# 7 AND 8 ARE NOT SHOWN.

00014599 SPINNER ASSEMBLY, V-BOX, ROLLER MILL BOLT-ON			
Item	Qty	Part Number	Description
1	1	00116683	ROLLER MILL ASSEMBLY <i>See Page 16-17</i>
2	1	00124175	SPINNER ASSEMBLY, ROLLER MILL <i>See Page 21</i>
3	1	00124145	CHUTE ASSEMBLY, V-BOX, ROLLER MILL <i>See Page 20</i>
4	1	00124146	COVER ASSEMBLY, REAR CONVER <i>See Page 24</i>
5	1	00118684	PLUMBING KIT, AIR, ROLLER MILL <i>See Page 25</i>
6	1	00065209	NOZZLE KIT, HYDR UNIT, 3GPM <i>See Page 28-29</i>
7	1	05090350	MANUAL, SPINNER, ROLLER MILL



00047140 SPINNER ASSEMBLY, RECEIVER MOUNTING ROLLER MILL

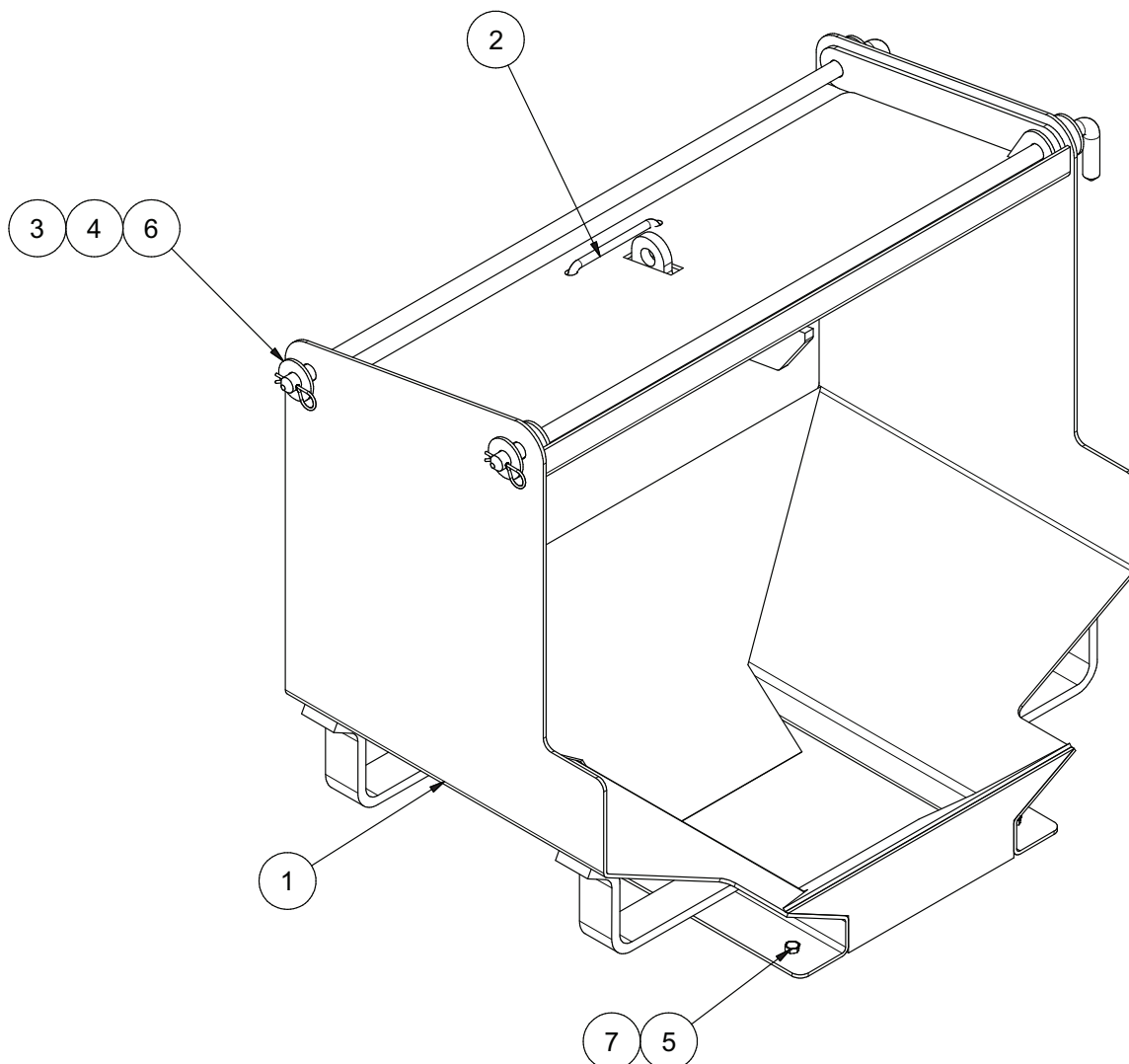
Item	Qty	Part Number	Description
1	1	00125329	MOUNTING KIT, RECEIVER MOUNTING <i>See Page 23</i>
2	1	00116683	ROLLER MILL ASSEMBLY <i>See Page 16-17</i>
3	1	00124175	SPINNER ASSEMBLY, ROLLER MILL <i>See Page 21</i>
4	1	00065209	NOZZLE KIT, HYDR UNIT, 3GPM <i>See Page 28-29</i>
5	1	00118684	PLUMBING KIT, AIR, ROLLER MILL <i>See Page 25</i>
6	1	05090350	MANUAL, SPINNER, ROLLER MILL



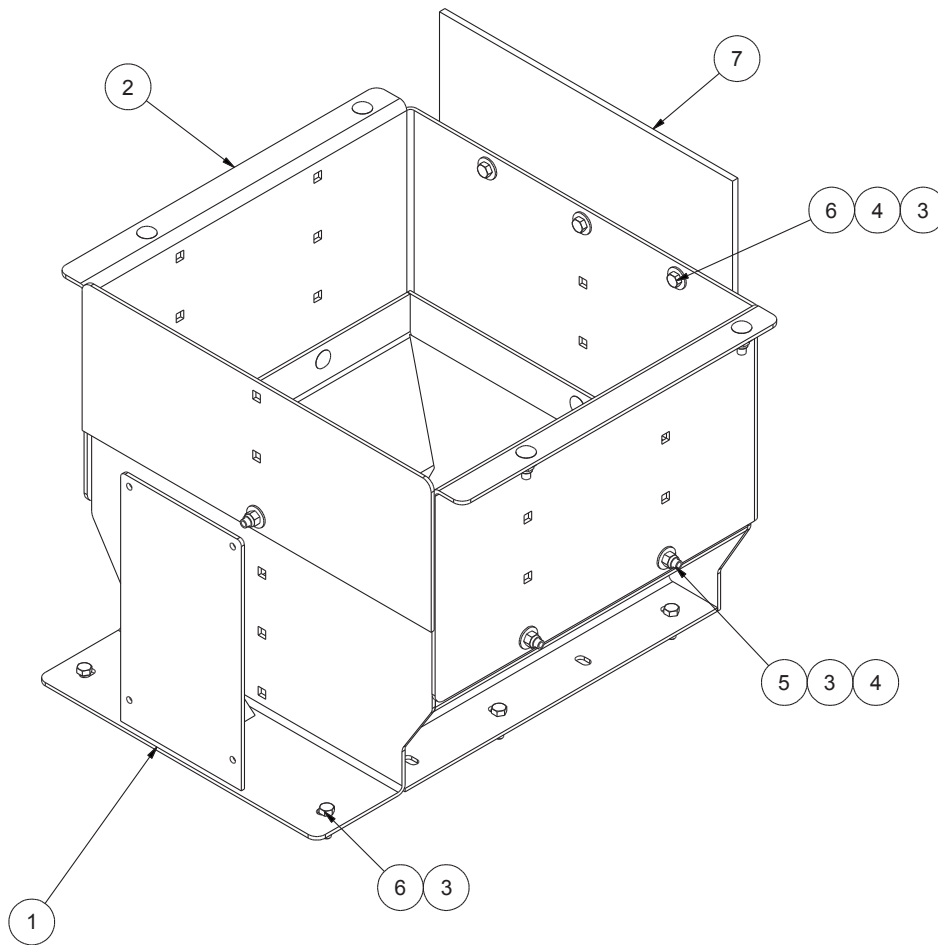
00116683 ROLLER MILL ASSEMBLY

Item	Qty	Part Number	Description
1	2	00116672	ROLLER 9" DIA x 10",4T
2	1	00116671	SIDE WLDMT,LH,ROLLER MILL
3	1	00129770	SIDE WLDMT,RH,ROLLER MILL
4	2	00116685	END PLATE,ROLLER MILL
5	8	05016096	BOLT .500-13 x 1.50 HHCS SST
6	24	05020908	NUT .500-13 NYLON LOCK 316 SST
7	2	00129766	SLIDER WLDMT,ROLLER GAP
8	8	00116693	GUIDE BAR,SLIDER,ROLLER MILL
9	8	00118602	SHIM,SLIDER,ROLLER MILL
10	8	05017160	BOLT .375-16 x 2.00 HHCS SST
11	22	05020891	NUT .375-16 NYLON LOCK 316 SST
12	2	05030054	BEARING,1.75",4B FLANGE
13	8	05016205	BOLT .500-13 x 2.00 HHCS SST
14	2	00118612	COUPLER SHAFT,1"DIA x 1.75"DIA
15	2	05050052	KEY,SQ,.375"x.375"x2.5",MV/MSV
16	4	00116675	SPACER,MOTOR,ROLLER MILL
17	2	00116692	MOUNT PL,MOTOR,SLIDER,ROLLER
18	8	05016209	BOLT .500-13 x 3.00 HHCS SST
19	8	05021392	WASHER .375 LOCK SST
20	14	05016034	BOLT .375-16 x 1.00 HHCS SST
21	1	05006677	MOTOR,HYD,PARKER,10CI,4B,1"SFT <i>See Page 32-33</i>
22	1	05006676	MOTOR,HYD,PARKER,6CI,4B,1"SFT <i>See Page 32-33</i>
23	1	00118604	CROSS BAR WLDMT,ROLLER MILL
24	8	05016162	BOLT .375-16 x 1.50 HHCS SST
25	1	05003183	CYLINDER,AIR,4X4,DA,250PSI MAX <i>See Page 34</i>
26	4	05016141	BOLT .313-18 x 1.75 HHCS SST
27	4	05020907	NUT .313-18 NYLON LOCK 316 SST
28	2	00129776	BUSHING,2.250 ODx.760 IDx.250
29	1	00129778	BUSHING,1.050 ODx.824 IDx2.125
30	1	05010770	BOLT .750-10 x 3.50 G8 HHCS ZC
31	2	05010764	BOLT .750-10 x 2.00 G8 HHCS ZC
32	2	05020803	NUT .750-10 JAM SS
33	2	6801-10	HYD FITNG, ADAPTER 90, 7/8"
34	1	00118687	HOSE ASSY,.5" ID,28" OAL
35	1	00118670	GUARD,ROLLER MILL

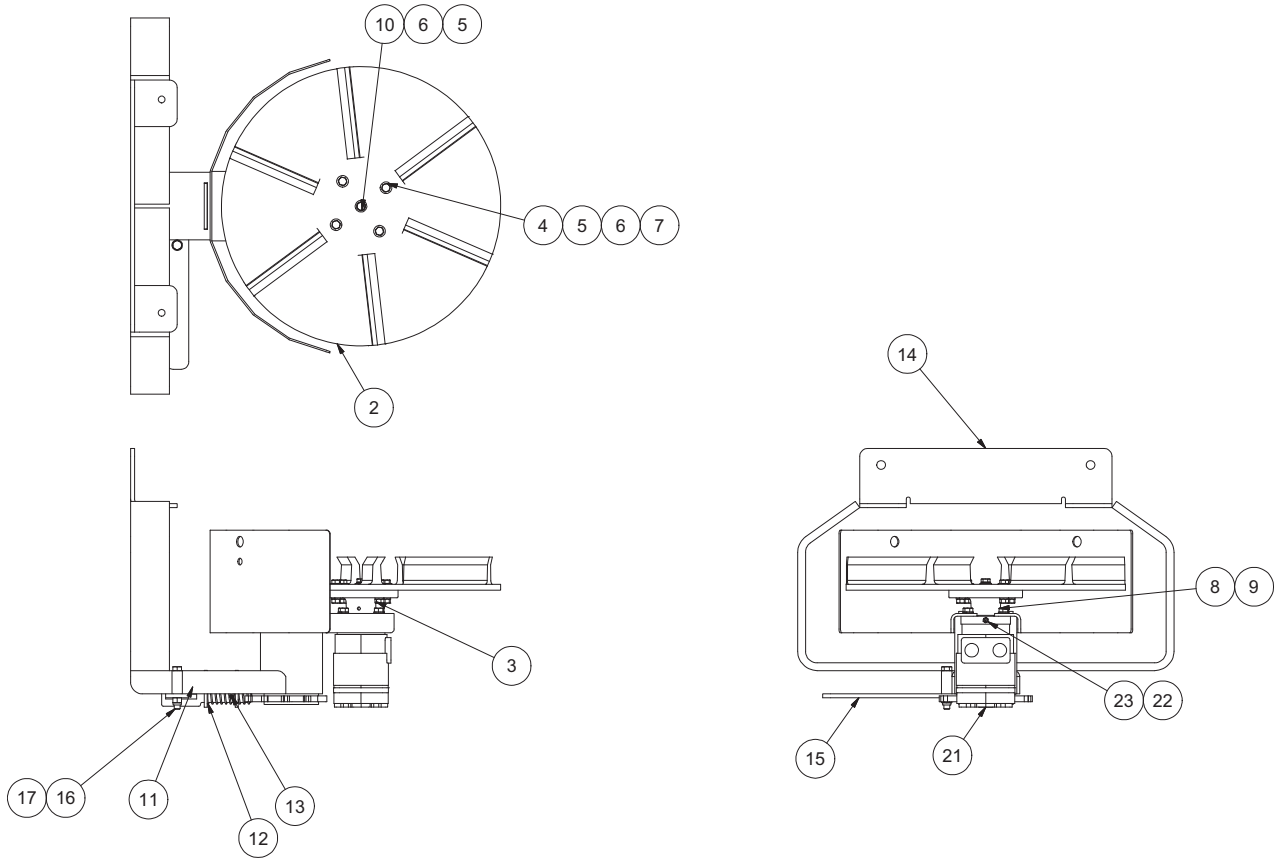
This page intentionally left blank.



00124149 CHUTE ASSEMBLY, RDS, TIP UP			
ITEM	QTY	PART NUMBER	DESCRIPTION
1	1	00124154	CHUTE WLDMT,TIP UP,RDS
2	1	00125310	LID WLDMT,CHUTE,RDS
3	2	00045530-B	LATCH ROD WLDMT,CENTERLINE
4	2	05022035	PIN #11 HAIR ZC
5	6	05016034	BOLT .375-16 x 1.00 HHCS SST
6	2	05021302	WASHER .750 FLAT SST
7	6	05020891	NUT .375-16 NYLON LOCK 316 SST

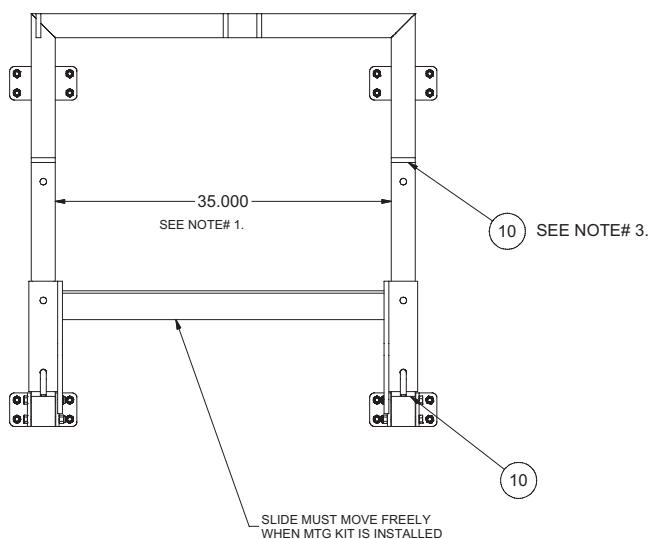
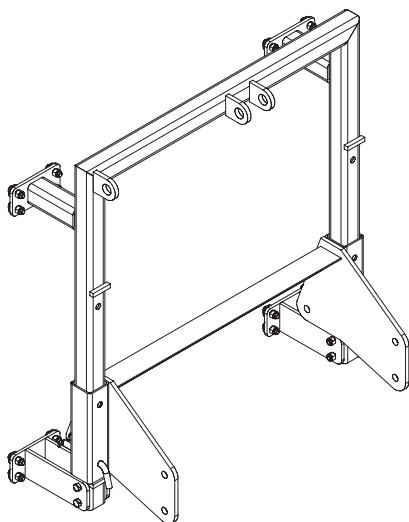


00124145 CHUTE ASSEMBLY, V-BOX, ROLLER MILL			
ITEM	QTY	PART NUMBER	DESCRIPTION
1	1	00124138	CHUTE WLDMT,LOWER,V-BOX
2	1	00124144	CHUTE WLDMT,UPPER,V-BOX
4	16	05021390	WASHER .375 FLAT SST
3	19	05020891	NUT .375-16 NYLON LOCK 316 SST
5	10	05016746	BOLT .375-16 x 1.25 CRG SST
6	9	05016049	BOLT .375-16 x 1.25 HHCS SST
7	1	05050055	WIPER,2PLY RUBBER,17x.313x7
8	1	00053253-F	SUPPORT,WIPER,SPINNER,MV/MSV



00124175 SPINNER ASSEMBLY, ROLLER MILL			
ITEM	QTY	PART NUMBER	DESCRIPTION
2	1	05050071-B	DISC,SPINNER,18 CCW,POLY,RED
3	1	05051380	HUB,SPINNER ASSY,STD,SHORT
4	4	05016139	BOLT .313-18 x 1.25 HHCS SST
5	5	05021404	WASHER .313 FLAT SST
6	5	05021407	WASHER .313 LOCK SST
7	4	05020855	NUT .313-18 HEX SST
8	4	05016162	BOLT .375-16 x 1.50 HHCS SST
9	4	05021392	WASHER .375 LOCK SST
10	1	05016138	BOLT .313-18 x 1.00 HHCS SST
11	1	00116688	LATCH,SPINNER,ROLLER MILL
12	1	05035104	SPRING,COMP,1.095"OD,3.0"OAL
13	1	05022126	PIN .250 x 1.500 ROLL ZC
14	1	00124172	FRAME WLDMT,SPINNER
15	1	00124177	ADJUSTMENT HANDLE,SPINNER
16	1	05016166	BOLT .375-16 x 2.50 HHCS SST
17	1	05020891	NUT .375-16 NYLON LOCK 316 SST
21	1	05006673	MOTOR,HYD,WHITE,3.2CI,4B,1"EXT
22	1	00122073	SEAL SAVER, MOTOR, SPINNER
23	1	05050288	GREASE ZERK,.250-28 STRAIGHT

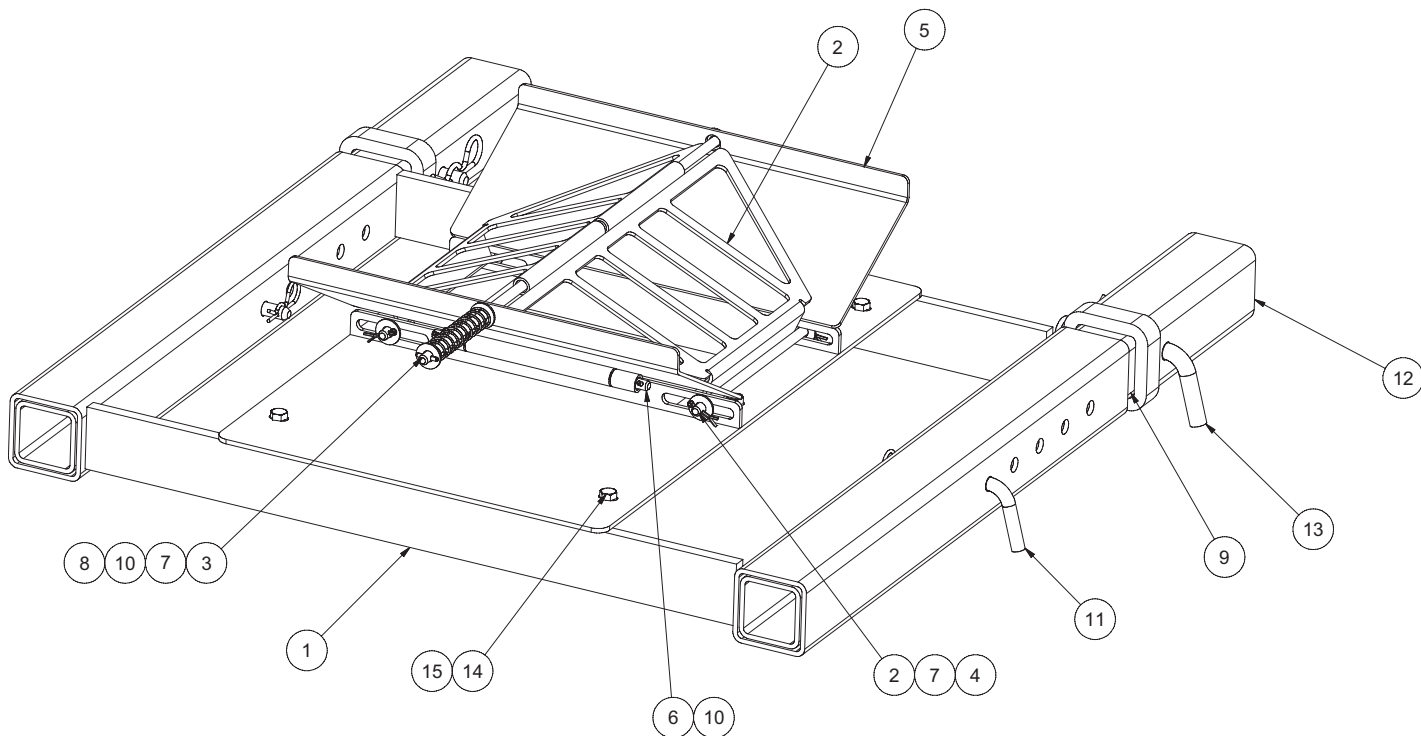
See Page 30-31



SPECIAL NOTES:

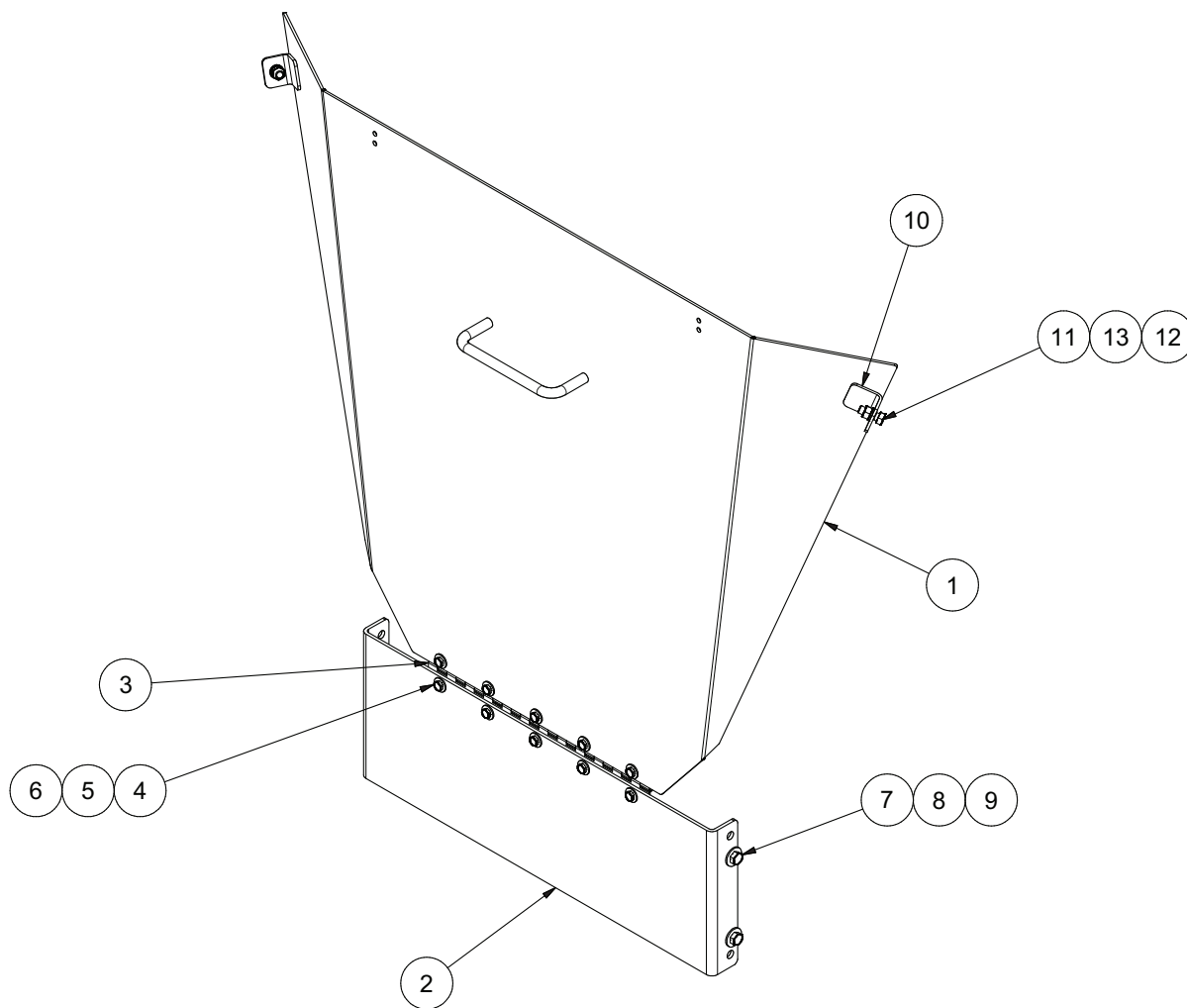
1. MOUNT WITH TUBES 35.000 APART, PLUMB AND PARALLEL.
2. CENTER ON CONVEYOR OF BODY. MOUNT HEIGHT DETERMINED BY SPINNER CHUTE AND BODY DIVERTER PLATE MATEING.
3. BAR CAN BE WELDED TO TUBE AS STOPS FOR EASIER PIN ALINGMENT.

00124150 MOUNTING KIT, SPINNER ASSEMBLY			
ITEM	QTY	PART NUMBER	DESCRIPTION
1	1	00125304	MTG WLDMT,SLIDE,SPINNER ASSY
2	1	00124156	SLIDE WLDMT,SPINNER ASSY
3	2	00124178	MOUNT WLDMT,UPPER,SPINNER
4	4	05017053	BOLT .500-13 x 4.00 HHCS SST
5	16	05016096	BOLT .500-13 x 1.50 HHCS SST
6	16	05021391	WASHER .500 FLAT SST
7	20	05020908	NUT .500-13 NYLON LOCK 316 SST
8	2	00107757	PIN .625 x 5.50,5.188 GRIP,SS
9	2	05022035	PIN #11 HAIR ZC



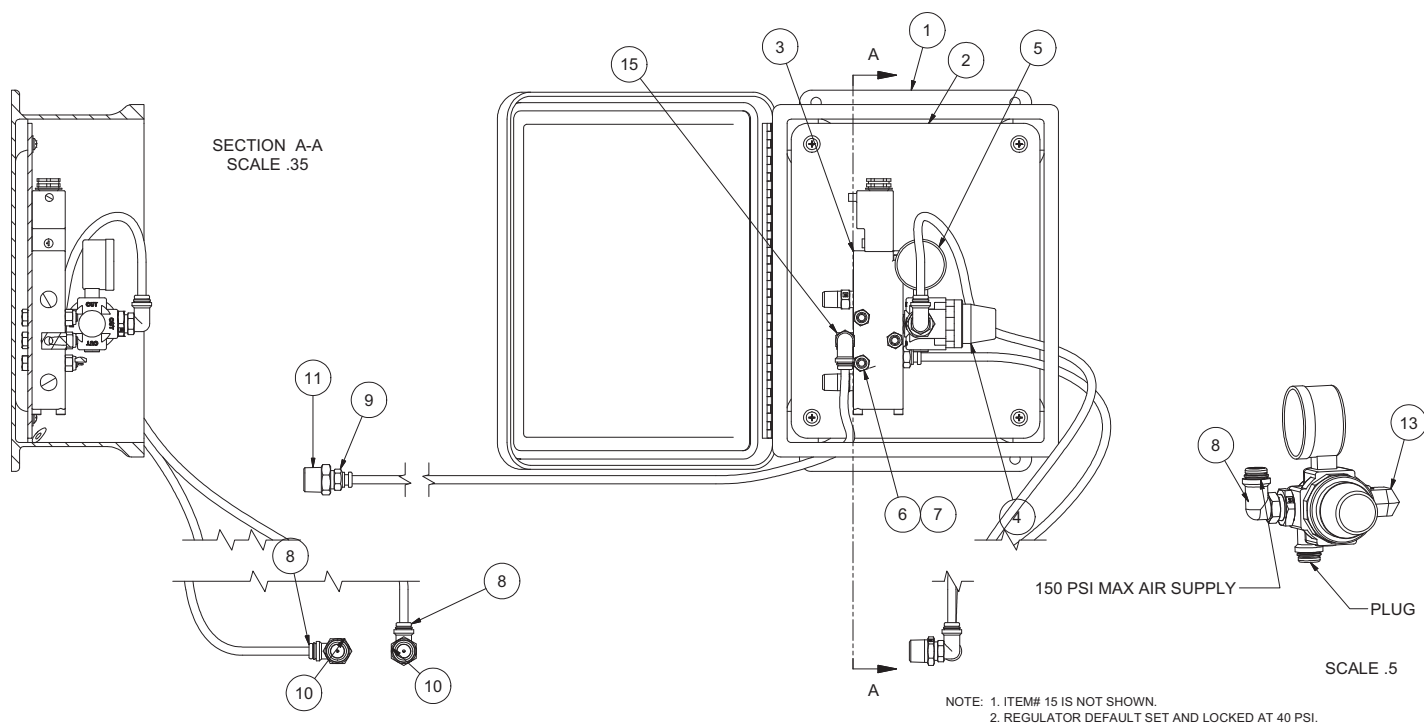
00125329 MOUNTING KIT, RECEIVER MOUNT

ITEM	QTY	PART NUMBER	DESCRIPTION
1	1	00125321	MTG WLDMT,RECEIVER MTG
2	2	00125325	GRATE WLDMT,RECEIVER MTG
3	1	00125328	PIN,GRATE,RT MTG
4	4	05022021	PIN .125 x 1.000 COTTER
5	2	00125332	DEFLECTOR WLDMT,RECEIVER MTG
6	2	00125330	PIVOT ROD,GRATE,RECEIVER MTG
7	7	05021390	WASHER .375 FLAT SST
8	1	05035107	SPRING,COMP,.845 OD,4.0 OAL
9	2	00125331	RECEIVER TUBE,INNER,MTG KIT
10	6	05022072	PIN .156 x .875 ROLL ZC
11	2	05022136	PIN .50 x 4.5 4" GRIP BENT
12	2	00089186	RECEIVER TUBE,2.500 ID x 9.000
13	2	05022155	PIN .625 x 6.,BENT,ZINC,INCL:
14	6	05016034	BOLT .375-16 x 1.00 HHCS SST
15	6	05020891	NUT .375-16 NYLON LOCK 316 SST



00124146 COVER ASSEMBLY, MV/MSV, REAR CNVR

ITEM	QTY	PART NUMBER	DESCRIPTION
1	1	00029274-E	COVER WLDMT,MV/MSV,REAR CNVR
2	1	00028058-E	ENCLOSURE,REAR,MV/MSV,AUSST
3	1	00019350	HINGE PIANO,.060x2.000x15.000
4	10	05016113	BOLT .250-20 x .750 HHCS SST
5	10	05020906	NUT .250-20 NYLON LOCK 316 SST
6	20	05021403	WASHER .250 FLAT SST
7	4	05016049	BOLT .375-16 x 1.25 HHCS SST
8	4	05020891	NUT .375-16 NYLON LOCK 316 SST
9	8	05021390	WASHER .375 FLAT SST
10	2	00072890-C	BRACKET,HOLD-DOWN,TANK,AUSST
11	2	05016034	BOLT .375-16 x 1.00 HHCS SST
12	2	05020842	NUT .375-16 HEX SST
13	2	05021392	WASHER .375 LOCK SST

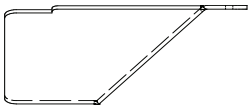


00118684 PLUMBING KIT, AIR, ROLLER MILL			
ITEM	QTY	PART NUMBER	DESCRIPTION
1	1	05041605	JUNCTION BOX,10x8x5,FIB,PRE-
2	1	05041606	PLATE,JUNCTION BOX,10x8 ALUM
3	1	05002902	VELVAC,SOLENOID,4-WAY AIR,F/
4	1	05044101	REGULATOR,VALVE,.25" W/LOCK
5	1	05052797	GAUGE,1.5" DIAL,0-160 PSI
6	3	05020906	NUT .250-20 NYLON LOCK 316 SST
7	3	05016038	BOLT .250-20 x 1.50 HHCS SST
8	4	05044103	FITTING,AIR,.25"AIR X .25"MALE
9	2	05044102	FITTING,AIR,.25"AIR X .25"MALE
10	3	05037254	FITTING,BUSHING,RDCR,.375MNPTx
11	1	05037331	FITTING,BUSHING,RDCR,.5MNPTx
12	8	05052824	TUBING,1/4" PLASTIC AIR BR
13	1	05044104	FITTING,ADAPTER,PIPE ELBOW 90,
14	2	05052823	VELVAC, GLAD HAND SERVICE
15	1	05044304	ELBOW,90,STREET,1/4 NPT

00124152 DIVERTER PLATE, BODY, RDS

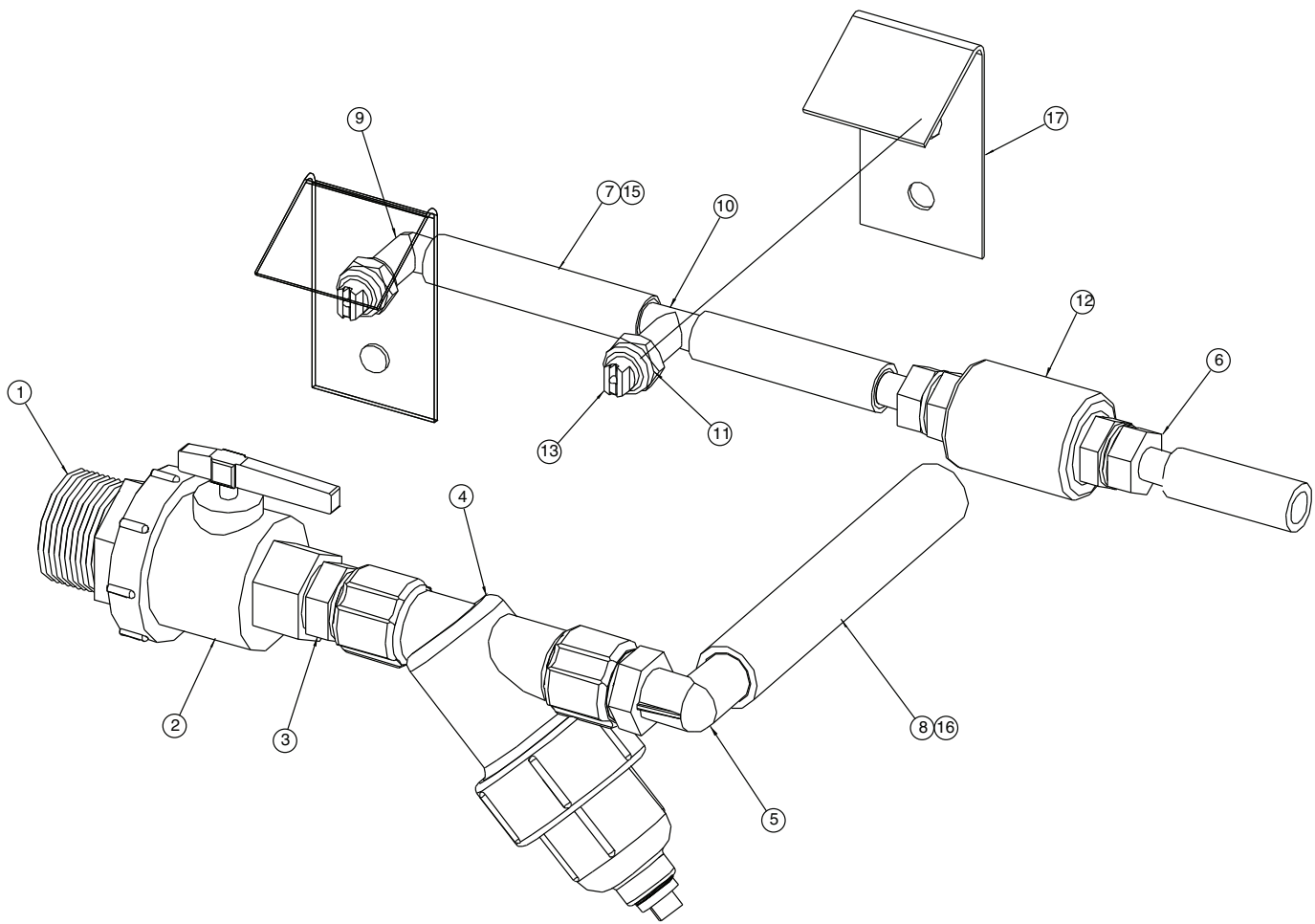


BEND DETAIL



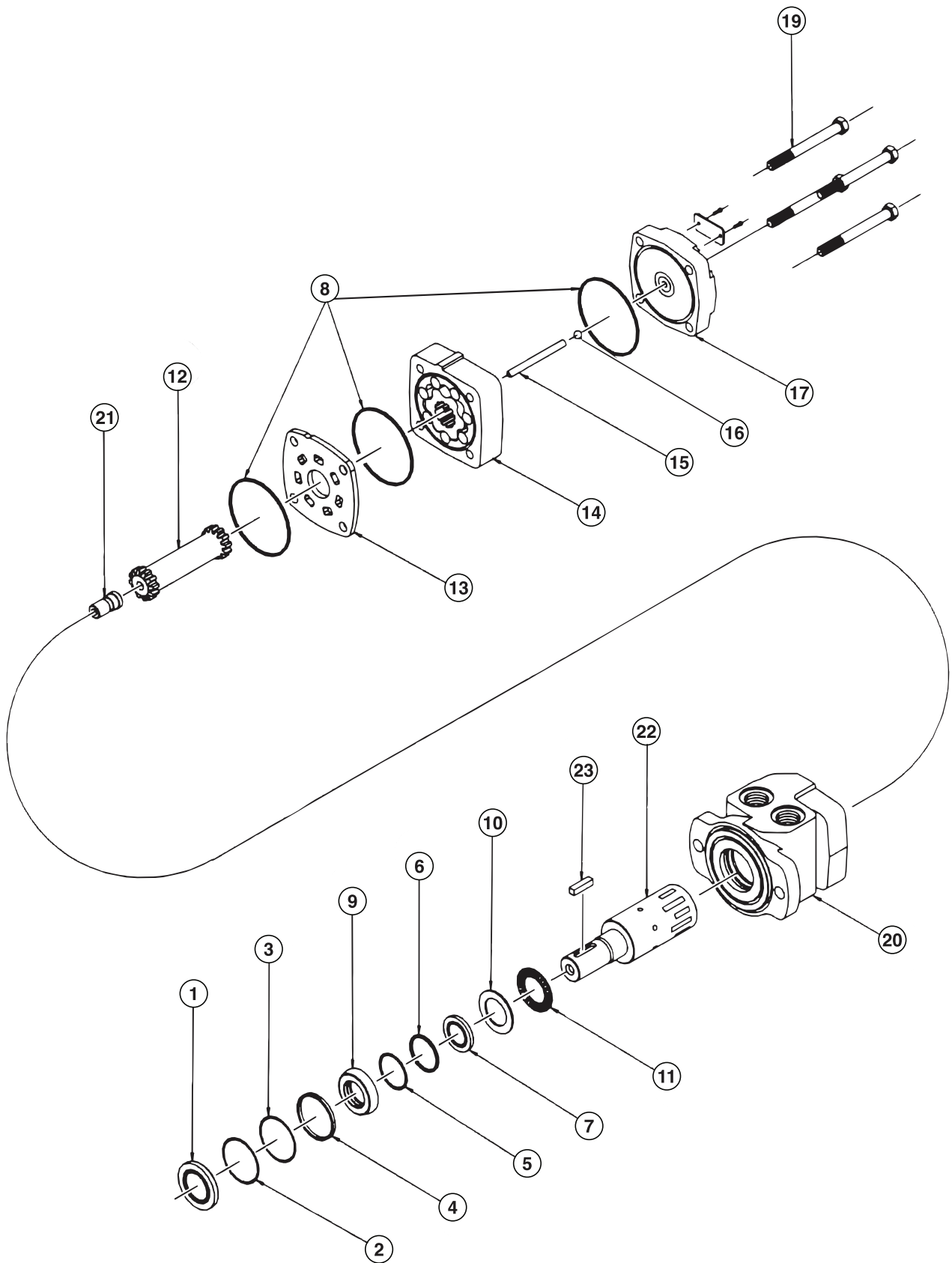
BEND DETAIL

00125313 WINCH KIT, 1500#, W/ BRAKE			
Item	Qty.	Part Number	Description
1	1	05052362	WINCH,HAND,1500#,W/BRAKE,2-WAY
2	2	05052845	CABLE ASSY,.1875",25'LONG,SST
3	3	05052872	PULLEY,BLOCK,ZC,.313 WIRE ROPE
4	1	00125307	BRACKET,WINCH,1500#
5	7	05010644	BOLT .375-16 x 1.25 G8 HHCS ZC
6	14	05021307	WASHER .375 FLAT ZC
7	7	05020898	NUT .375-16 GC TOPLOCK C&W



00065209 NOZZLE KIT, HYDR UNIT, 3GPM 2 NOZZLE, PRE-WET

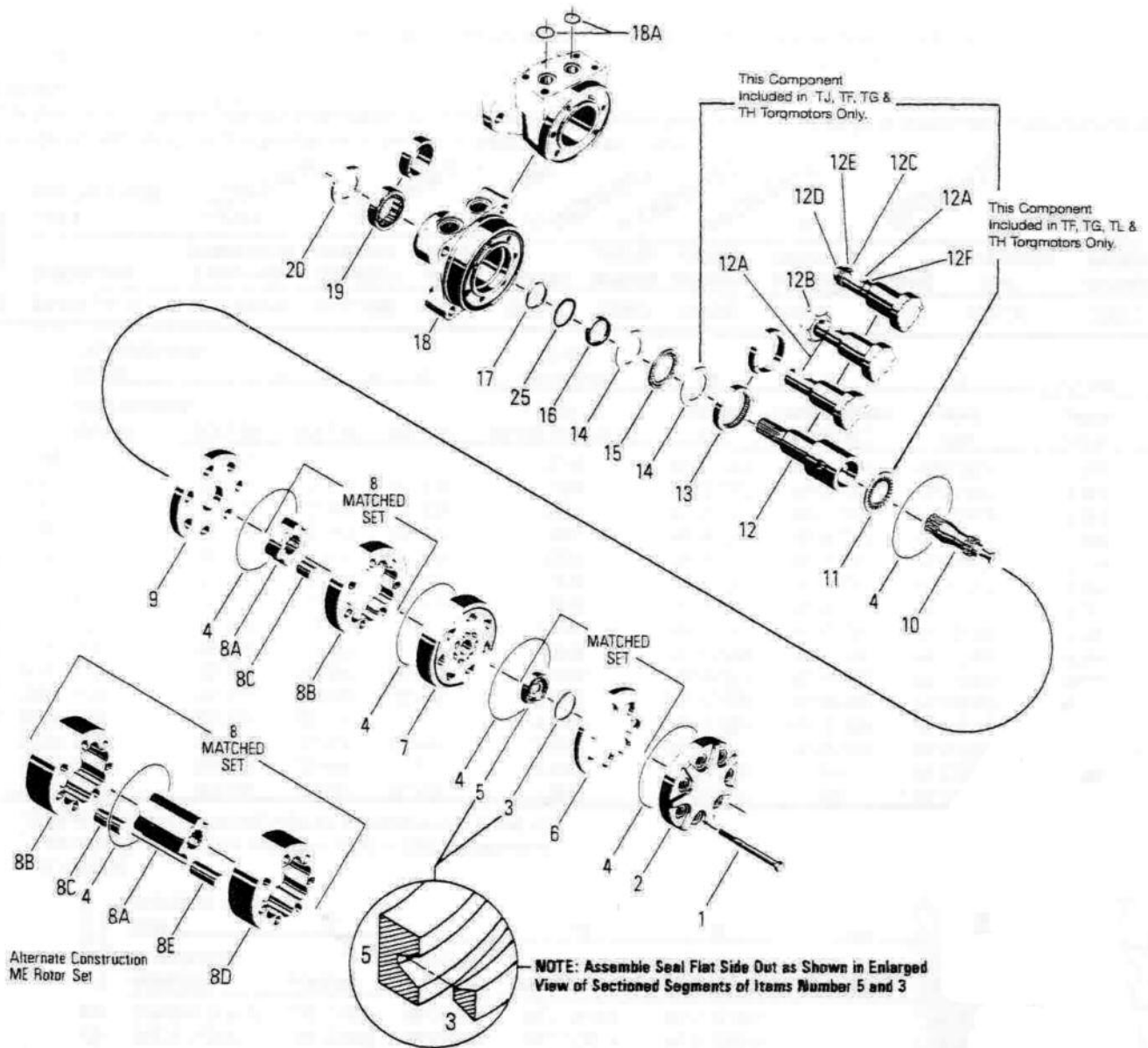
Item	Qty	Part Number	Description
1	1	05037311	NIPPLE, REDUCING, POLY, 1.25 MNPT X .75" MNPT
2	1	05037315	VALVE, BALL UNION TYPE POLY, .75" FNPT X .75 FNPT
3	1	05037355	NIPPLE, .75" NPT SHORT POLY
4	1	05037309	STRAINER, Y-TYPE, .75 FNPT, 20 MESH SCREEN, POLY <i>See Page 35</i>
5	1	05037304	HOSE BARB, 90°, POLY, .75 MNPT X .75 BARB
6	2	05037302	HOSE BARB, .5 X .5 MNPT, POLY, STRAIGHT
7	6	05037281	CLAMP, HOSE, .75 SST
8	2	05037300	CLAMP, HOSE, 1 SS
9	1	05038197	NOZZLE BODY, POLY, HOSE SHANK, .5 BARB, 90°
10	1	05038196	NOZZLE BODY, POLY, HOSE SHANK, T, .5 BARB, TEE
11	2	05038179	NOZZLE CAP, BRASS
12	1	05050202	VALVE, IN-LINE CHECK, .5 NPT, PVC
13	2	05038221	NOZZLE TIP, BRASS, 3GPM@40PSI, QUICK CHANGE
14	1	05050417	CLAMP, .75 CUSHIONED SST
15	20 FT	05037307	HOSE, .5 BLACK EPDM
16	5 FT	05037308	HOSE, .75 BLACK EPDM
17	2	00050939	SHIELD, NOZZLE, PRE-WET, 304, SM NOZZLE
18	4	05016138	BOLT, .313-18 X 1, HHCS, SST
19	4	05020901	NUT, .25-20, SPINLOCK, SST
20	1	05016040	BOLT, .250-20 X 1, HHCS, SST
21	1	05020904	NUT, .250-20 SPINLOCK, SST
22	1	05037464	SEALANT, THREAD W/ TEFLON, TRU-BLUE
23	1	05037585	ELBOW, .75 NPT POLY STREET, 90°
24	1	05037301	HOSE BARB, POLY, .75 NPT X .75 BARB, STRAIGHT
25	1	05050484	CLAMP, 1.75 ID, CUSHIONED METAL, #28



MOTOR ASSEMBLY PARTS LIST

Item	Part Number	Description
1	Seal Kit 05006679	Dust Seal
2		Split Wire Ring
3		Metal Backup Shim
4		High Pressure Seal
5		Metal Backup Shim
6		Teflon Backup Shim
7		Shaft Seal
8		Body Seals (3)
9		Seal Carrier
10		Thrust Washer
11	---	Thrust Bearing
12	---	Drive Link Kit
13	---	Wear Plate
14	---	Rotor Kit
15	---	Drive Link Pin Kit
16	---	Included in item #15 Drive Link Pin Kit
17	---	End Cover
18	---	Serial Number Plate
19	---	Bolt Set Kit
20	05006564	Housing Kit, 4-Hole, w/ 7/8" O-Ring
21	---	Cooling Plug
22	05006410	Shaft Kit 1" Straight Speed Sensor
23	---	Key Kit, 1" Straight

05006676 & 05006677 MOTOR, HYD, PARKER



MOTOR ASSEMBLY PARTS LIST		
Item	Part Number	Description
1	----	Special Bolt
2	----	End Cover
3	----	Seal Ring Commutator
4	----	Seal Ring
5	05006470	Commutator & Ring Assembly
6		
7	05006463	Manifold
8	----	Rotor Set
9	05006460	Wear Plate
10	----	Drive Link
11	----	Thrust Bearing
12	05006474	Coupling Shaft
13	05006461	Bearing
14	05006455	Thrust Washer
15	05006456	Thrust Bearing
16	----	Seal
17	----	Backup Ring
18	----	Housing
19	05006489	Bearing
20	----	Dirt/Water Seal
21	----	Plug
22	----	O-Ring
23	----	Spring
24	----	Valve
25	----	Backup Washer

Standard Seal Kit PN: 05006627 (includes Six Seal Rings, Commutator Seal, Inner Seal, Backup, Dirt & Water Seal, Grease Pack and Backup Washer.)

05003183 CYLINDER, TELEC, 5X3X130, SA

Replacement Parts:
Seal Kit - PN: 05003190 includes:
(1) Piston Rod Seal
(1) Piston Seal

Piston Rod Seal

Buna-N quad seal provides positive sealing to keep pressure in and dirt out for less maintenance and trouble free performance.

Piston Rod

High strength steel, hard chrome plated for reliable smooth performance, long life, and extended seal life.

Cylinder Body

Hard coated heavy wall aluminum alloy. The tube I.D. coating has extreme hardness, excellent wear and seizure resistance, low coefficient of friction, and high corrosion resistance. This provides excellent wear qualities and quick break-a-ways.

Piston

Attached securely to the rod to provide maximum strength and durability.

Rod Bearing

High density iron provides maximum support for longer life

Heads and Caps

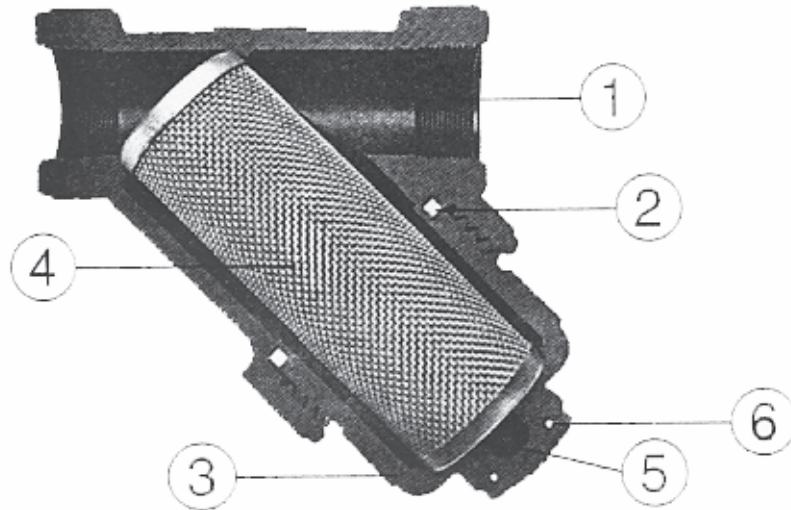
Anodized aluminum alloy for solid, lightweight, high strength performance. This provides excellent corrosion resistance, durability, and a long lasting quality appearance.

Piston Seal

Buna-N quad seal provides positive sealing with air.



05037309 STRAINER, Y-TYPE, 3/4" FNPT, 20 MESH SCREENS



05037309 Y-STRAINER			
Item	Qty	Part Number	Description
1	1	05039528	Y" Body and Cap
2	1	05038107	Gasket
3	1	05038564	End Cap
4	1	05038392	20 Mesh Screen
5	1	05038563	1/4" Drain Plug
6	1	05039534	EPDM O-Ring for Drain Plug

HOW TO ORDER PARTS

To order or inquire about replacement parts, please contact the distributor or store that the product was purchased through. To speed the information flow, please have the follow information ready:

- Model Number
- Serial Number
- Part Number and/or description as per the parts manual
- Quantity needed

For further information about **Monroe Truck Equipment** replacement parts, please call 800-880-0109 and ask for **Snow & Ice Parts Sales**.

RETURN POLICY

Merchandise returned to **Monroe Truck Equipment** must have a Warranty Service Request (WSR) form filled out completely and signed by authorized personnel. To get your WSR form, call 800-880-0109. For whole goods, ask for **Snow & Ice Sales**. For replacement parts, ask for **Snow & Ice Parts Sales**. All returned items are subject to a 15% restocking fee and must be sent freight prepaid!

MONROE TRUCK EQUIPMENT, INC. WARRANTY SNOW & ICE CONTROL PRODUCTS

Monroe Truck Equipment, Inc. warrants to the original purchaser, that if any part of the product proves to be defective in workmanship or material within **ONE YEAR** of the original installation, and is returned to us within 30 days of the discovered defect, we will (at our option) repair or replace the defective part. This warranty does not apply to damage resulting from misuse, neglect, accident, improper installation, normal wear items or lack of maintenance. This warranty is exclusive and supersedes all other warranties, whether expressed or implied. **Monroe Truck Equipment, Inc.** neither assumes, nor authorizes anyone to assume for it, any other obligation or liability in connection with this warranty and will not be liable for consequential damages.

All engines, pumps, motors, cylinders and valves are warranted by their manufacturer and not by **Monroe Truck Equipment, Inc.**. The manufacturer's warranty will apply to these parts. Electrical and hydraulic components are not to be disassembled without the express written permission of Monroe Truck Equipment. Use of replacement parts other than original equipment voids this warranty.

All defective parts returned must be accompanied by the model number, serial number, date installed, date of defect, description of defect, and the name of the distributor from whom it was purchased. All warranty claims must have prior written approval from **Monroe Truck Equipment, Inc.**

Please return the warranty registration card that accompanies this manual to confirm receipt of this parts catalog and acknowledge the information contained within. Failure to return the attached card may result in a voided warranty.



1051 West 7th Street
Monroe, WI 53566
608-328-8127 ~ Fax: 608-328-4278

Warranty Policy

Uninstalled Parts and Equipment Provided by Monroe Truck Equipment

Monroe Truck Equipment will provide the following limited warranty for a period of one year to the original purchaser of all uninstalled goods provided by Monroe Truck Equipment:

LIMITED WARRANTY: All goods provided by Monroe Truck Equipment (MTE) will be free from defects in material and workmanship for a period of one year from the date of purchase by the original purchaser. This limited warranty shall be the sole and exclusive remedy for any such product found to be defective. This limited warranty supercedes all previous warranties and is exclusive and in lieu of all other warranties, whether expressed or implied.

This limited warranty applies only to parts or accessories manufactured by MTE and/or provided by same. Except with respect to title, this limited warranty does not pertain to parts or accessories not manufactured and/or provided by MTE, regardless of whether such parts or accessories were selected and/or recommended by MTE. MTE will, as a service to the buyer, pass on any warranties received from the original manufacturer of MTE provided parts and/or accessories.

MTE will not under any circumstances be liable for any incidental or consequential damages whether in tort, contract, or otherwise, for any bodily injury, death, property damage, loss of use, or loss of income resulting from or in any way arising out of any goods provided by MTE, or their sale, use, or manufacture.

Any warranty claim deemed to be arising from the result of misuse, abuse, neglect, accident, improper installation, lack of maintenance, act of war (whether declared or otherwise), or act of God will be denied. Any repair or modification by the buyer or any third party, without the prior written consent of MTE, will void any possible warranty compensation. Any damage deemed to be the result of abnormal operation will not be compensated by this warranty.

Normal or special maintenance items such as fuels, fluids, tires, belts, hoses, filters, air cleaners, light bulbs, and any other items subject to normal wear and tear that are supplied in connection with goods provided by MTE are not allowed under this warranty.

All engines, pumps, cylinders, valves, and motors are warranted by their manufacturer and not by Monroe Truck Equipment. The manufacturer's warranty will apply to these parts. Electrical and hydraulic components are not to be disassembled without the express written consent of MTE. Any disassembly of MTE provided components without prior authorization will void the applicable warranty.

Monroe Truck Equipment shall be the sole and final determining authority as it applies to the administration of this warranty policy. Purchaser acknowledges receipt of Monroe Truck Equipment Warranty Policy and agrees to be bound by same.



GLOBAL SOLUTIONS
ARMORED VEHICLES ~ SPORT TRUCK CONVERSIONS
MUNICIPAL SNOW & ICE CONTROL ~ FIRE APPARATUS
PICKUP TRUCK ACCESSORIES ~ TRUCK EQUIPMENT/MODIFICATIONS





1051 West 7th Street
Monroe, WI 53566
608-328-8127 ~ Fax: 608-328-4278

Any and all warranty claims must be forwarded to MTE within 10 days of defect discovery. A copy of the original Monroe Truck Equipment invoice as well as the manufacturer's model number, serial number, and date of installation must accompany all correspondence regarding said claims. MTE will, at their option, choose whether to repair or replace the defective part unless otherwise specified by the original manufacturer of said part.

Procedures for Warranty Claims Notification

For submission of any warranty claim please contact Monroe Truck Equipment – Warranty Department at 800-356-8134

The following documentation will be needed when you call for initial warranty authorization:

1. A copy of the original MTE invoice.
2. Make, Model, and VIN or Serial Number of the equipment involved.
3. Part number and serial number of the part in question.
4. A complete description of the problem.

The following must accompany any claim submitted to Monroe Truck Equipment:

1. Documented photographs of any physical damage.
2. Inspection notes by MTE personnel or MTE authorized 3rd party.
3. Authorization number issued by Monroe Truck Equipment – Warranty Department.

Defective parts must be returned to Monroe Truck Equipment (freight prepaid) within 30 days of issuance of Authorization Number.

Monroe Truck Equipment reserves the right to void any warranty for failure to comply with Monroe Truck Equipment Warranty Policy.

This policy is effective October 11, 2012