



V-BOX SPREADER DUAL AUGER

Service and Parts Manual



Monroe Snow & Ice Control

A Division of Monroe Truck Equipment

1051 W. 7th Street

Monroe, WI 53566

Phone: 608-328-8127

Fax: 608-329-8488

Website: www.monroetruck.com

Email: snowandicecontrol@monroetruck.com

05090166-7
2/20/2014

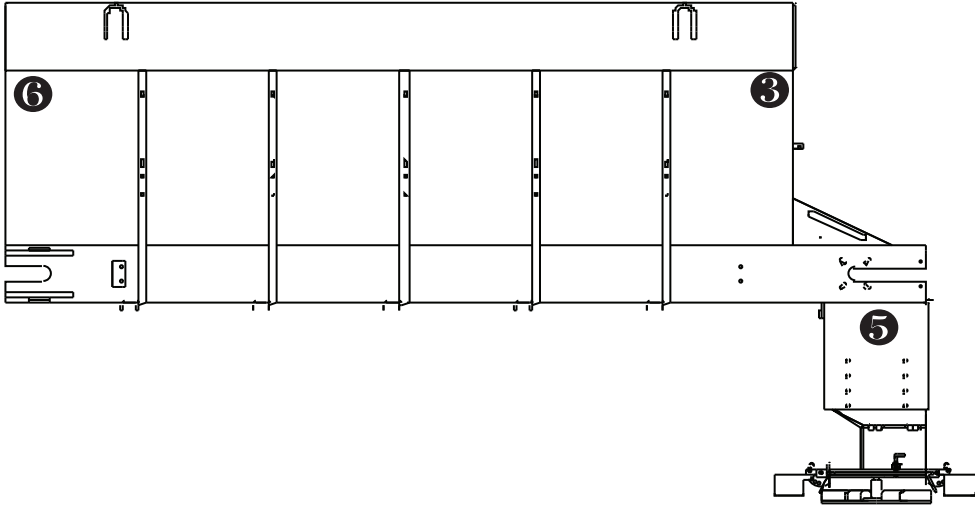


TABLE OF CONTENTS

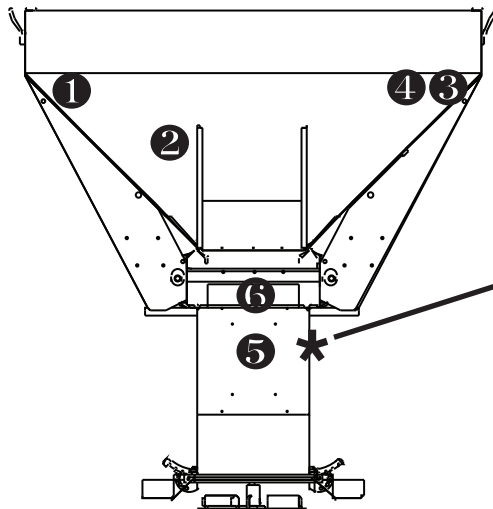
Safety Instructions	2-4
Maintenance Instructions	5
Hydraulic Troubleshooting	6
Installation and Instructions	7
Operating Instructions	8
Wiring Schematic	9
Hydraulic Schematic	10
V-Box Information and Specifications	11
Motor Specification	12
General Information	13
Replacement Parts	14-49
How to Order Parts	50
Return Policy	50
Warranty Registration	51-53

SAFETY DECAL LOCATIONS

DRIVER SIDE



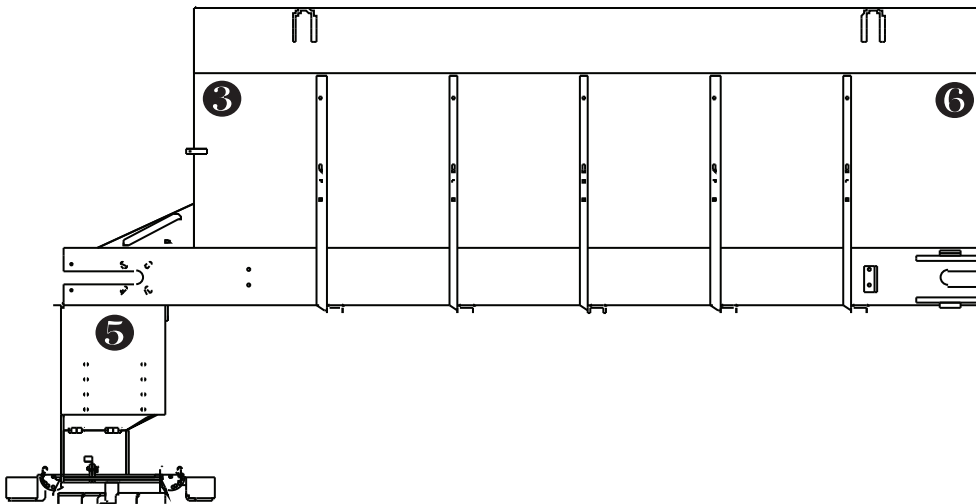
REAR VIEW



Denotes the location of the parts manual, canister and canister bracket. Reorder with the following part numbers:

- | | |
|----------|------------------|
| 05050758 | Parts Manual |
| 05052330 | Canister |
| 05052331 | Canister Bracket |

PASSENGER SIDE



SAFETY DECALS

1



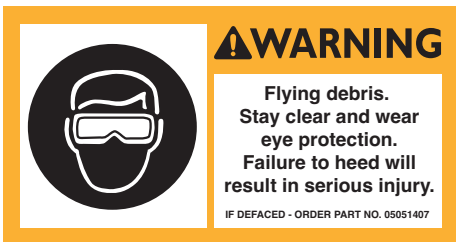
2



3



4



5



6



7



Should you ever need replacement decals or parts/maintenance manuals, simply contact MTE and we will supply you with them FREE OF CHARGE. See page 26 for safety decal replacement part numbers.

SAFETY DECAL SIGNAL WORDS

DANGER

DANGER (*Red*) indicates an imminently hazardous situation which, if not avoided, will result in death or serious injury.

WARNING

WARNING (*Orange*) indicates a potentially hazardous situation which, if not avoided, could result in death or serious injury.

CAUTION

CAUTION (*Yellow*) indicates a potentially hazardous situation which, if not avoided, may result in minor or moderate injury.

CAUTION

CAUTION (*Yellow*) used without the safety risk alert symbol indicates a potentially hazardous situation which, if not avoided, may result in property damage.

SAFETY INSTRUCTIONS

- Read all installation, safety and maintenance instructions completely before operating this equipment.
- Keep all personnel clear of moving parts while equipment is being operated.
- Do not operate equipment in need of maintenance! Repair immediately!
- While operating this equipment, use common sense, use caution, be alert and be safety-conscious.
- Do not race the engine while unloading.

MAINTENANCE INSTRUCTIONS

CAUTION: Always replace shields and covers when maintenance is complete.

- Allow hydraulic system to warm up before using.
- Maintain a $\frac{3}{4}$ full reservoir using high grade non-foaming oil.
- Avoid getting contaminants in reservoir when filling.
- Replace filter cartridge with new cartridge at least twice a year and more often if necessary.
- Clean quick disconnects before taking apart or connecting.
- Lubricate all fittings on a regular basis. Refer to chart below.
- The grease fittings are located as follows:
Conveyor Bearings3 fittings
Rear Gate Jack2 fittings
6:1 Gearbox4 fittings
- Protect quick disconnects while in use and after taking apart with oily rag or other suitable protection.
- All bearings require periodic greasing and more frequent greasing during periods of greater use.
- Greasing pump shaft u-joints and slip end of pump shaft is recommended with each truck lubricating.
- Gearboxes should be checked for proper lubrication level, and SAE 90 gear type lubricant added if necessary.
- Rinsing down and cleaning spreader after each use, and repainting or oiling after each season, will greatly prolong spreader life.
- Spreader trough or hopper should be kept empty to prevent materials from freezing around conveyor (or roll) in severe cold weather.
- Gearbox vents, when supplied, should be kept open at all times, or damage may result to seals.
- A coating of grease on spreader drag chain take-up bolts is recommended for easier chain adjustment.
- Drive chains and drag chains should be checked for slack after initial start up and frequently thereafter. If the distance between the center line of rear sprocket and the point where chain contacts lower flange on longmember is less than 30" tighten as necessary. The length of the adjuster spring should be 5" when chain is at proper tension. Tighten chain, check length of spring, run unit and re-check and re-tighten again if necessary.

HYDRAULIC TROUBLE SHOOTING CHART

<p>CONDITION 1 Pump cavitation recognized by excessive noise.</p> <p>CAUSE</p> <ul style="list-style-type: none"> • Air entering system through suction lines. • Suction line kinked, twisted or too long. • Inadequate size suction line. • Oil too heavy. • Excessive pump speed. Normal pump speed 1200 to 1500 RPM. <p>CORRECTION</p> <ul style="list-style-type: none"> • Check line from reservoir for possible leaks. • Install suction line as short and straight as possible. • Increase suction line size. • Drain and replace with a low viscosity non-detergent oil. • Pump capacity is 16 GPM at 1000 RPM. Decrease PTO speed accordingly. 	<p>CONDITION 2 Erratic operation of conveyor and/or spinner.</p> <p>CAUSE</p> <ul style="list-style-type: none"> • Low oil. • Worn or defective motor. • Dirty, worn or defective flow control valve. • Plugged filter. • Relief valve setting too low. • Pump cavitation. • Air vent on reservoir tank is blocked. <p>CORRECTION</p> <ul style="list-style-type: none"> • Fill reservoir to a $\frac{3}{4}$ full level. • Repair or replace motor.* • Clean, repair or replace flow control.* • Replace filter element and clean filter. • Adjust relief valve for 1500 PSI. • Refer to pump section. • Clean or replace vent cap to admit atmospheric pressure to inside of the tank.
<p>CONDITION 3 Slow operation of conveyor and/or spinner.</p> <p>CAUSE</p> <ul style="list-style-type: none"> • Worn or defective pump. • Worn or defective motor. • Pump cavitation. • Insufficient pump speed. <p>CORRECTION</p> <ul style="list-style-type: none"> • Repair or replace pump.* • Repair or replace motor.* • Refer to pump section. • Pump capacity is 16 GPM at 1000 RPM. Increase PTO accordingly. 	<p>CONDITION 4 Conveyor and/or spinner will not operate.</p> <p>CAUSE</p> <ul style="list-style-type: none"> • Quick disconnects are dirty, damaged, or improperly connected. • Hose connections wrong. • Foreign material in valve compensator. <p>CORRECTION</p> <ul style="list-style-type: none"> • Clean or replace and properly connect. • Refer to illustration. • Remove compensator and clean.

INSTALLATION INSTRUCTIONS

PERMANENT CHASSIS MOUNT

1. Hardwood wear strips usually 1 x 3 (not furnished) must be fitted to the truck chassis.
2. The V-Box should be positioned on the wooden wear strips so that a distance of approximately 6" should be left between the truck cab and the front of the V-Box. This will help facilitate any future servicing of the conveyor chain.
3. Parts of some side gussets may have to be cut out to clear the truck tires.
4. Hardware kits for permanent mount V-Boxes are used to attach the V-Box to the truck chassis.
5. **DO NOT** weld mounting angles to the truck frame. Doing so can cause fatigue-cracking of the truck frame.

SLIP-IN V-BOXES

1. Remove and store the dump box tailgate.
2. Place the V-Box in the dump body and push as far forward as possible. Longmembers must overhang the rear by approximately 22". If the dump body is not flat, it is suggested that the V-Box be placed on two 1 x 6 hardwood boards. This will help to evenly distribute the weight of the loaded V-Box on all of the cross channels.
3. The spinner assembly is slid into place on the rear of the spreader. The top flanges of the spinner extension box rest on top of the bottom flanges of the spreader main and can be slid into place. Use the 4 bolts to attach the spinner to the v-box.
4. The four optional tie-down bolts are hooked into the holes in the body side gussets (two on each side). The tie-down clips are slipped under the rail of the dump box and the nut and jam nut tightened.

NOTE: If swing-up spinner is used, longmembers must overhang rear of dump body a minimum of approximately 22".

OPERATING INSTRUCTIONS

CAUTION:

- When starting up new equipment, be sure everyone is standing clear, watch for anything that may require shutting system down.
- Be sure lever on valve is moved completely to OFF position before working in or around spreading equipment.

INITIAL START UP:

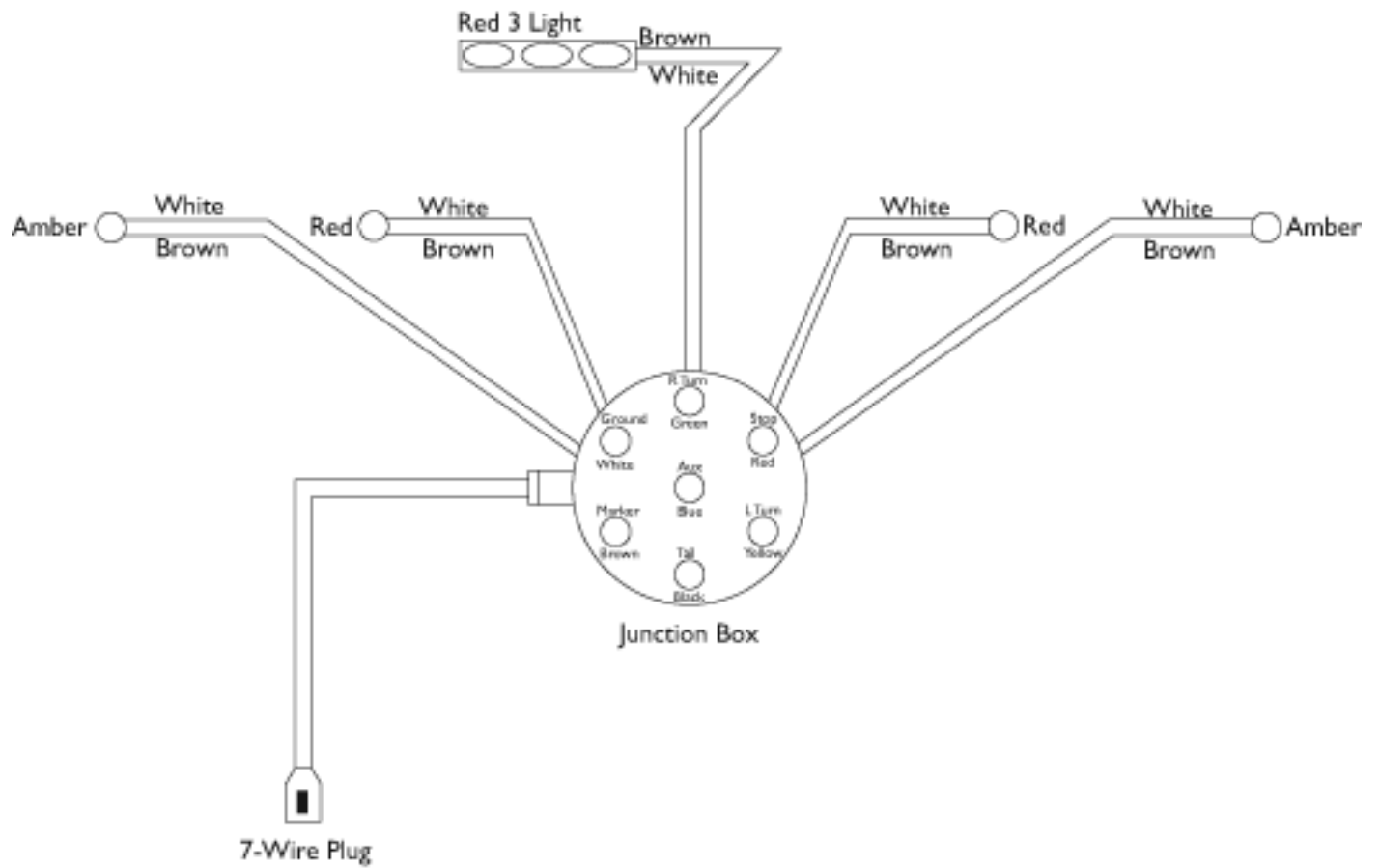
1. Fill reservoir about $\frac{3}{4}$ full with high-grade non-foaming hydraulic oil. KEEP OIL CLEAN!
2. Move valve on-off lever to OFF position.
3. Open conveyor and spinner knobs on valve.
4. Engage PTO and allow hydraulic oil to circulate several minutes to warm up.
5. Move valve on-off lever to ON position.
6. Check entire hydraulic system for leaks.
7. Examine conveyor and spinner to see if they are running in right direction.
8. Fill reservoir to $\frac{3}{4}$ full.
9. Hydraulic system is ready for use.

SPREADER OPERATION:

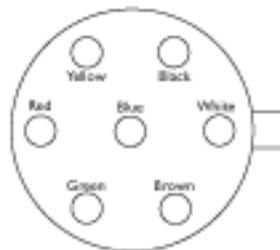
1. Start truck engine and allow hydraulic system to warm up by shutting off spinner and conveyor knobs and moving on-off lever to ON position.
2. Turning the knob marked "spinner" counter-clockwise will increase the spinner speed and width of spread.
3. Turning the knob marked "conveyor" counter-clockwise will increase the conveyor speed and thus the amount of material spread.
4. The gate on the rear of the box will also allow more material to pass to the spinner when opened wider.
5. The spread pattern can be controlled by rotating the entire spinner chute assembly 180°. If the material is dropped on the front of the disc it will be spread behind and to the right of the truck. If material is dropped on the rear of the disc it will be spread behind and to the left of the truck. The baffles inside the assembly will also further control the pattern left to right. Experimenting with the different positions will help to adjust the spread pattern as desired.
6. The control valve may be turned on and off or adjusted while truck is in motion.
7. Spinner and conveyor may be stopped at the same time without changing their valve settings by moving the on-off lever to OFF position.

WIRING SCHEMATIC

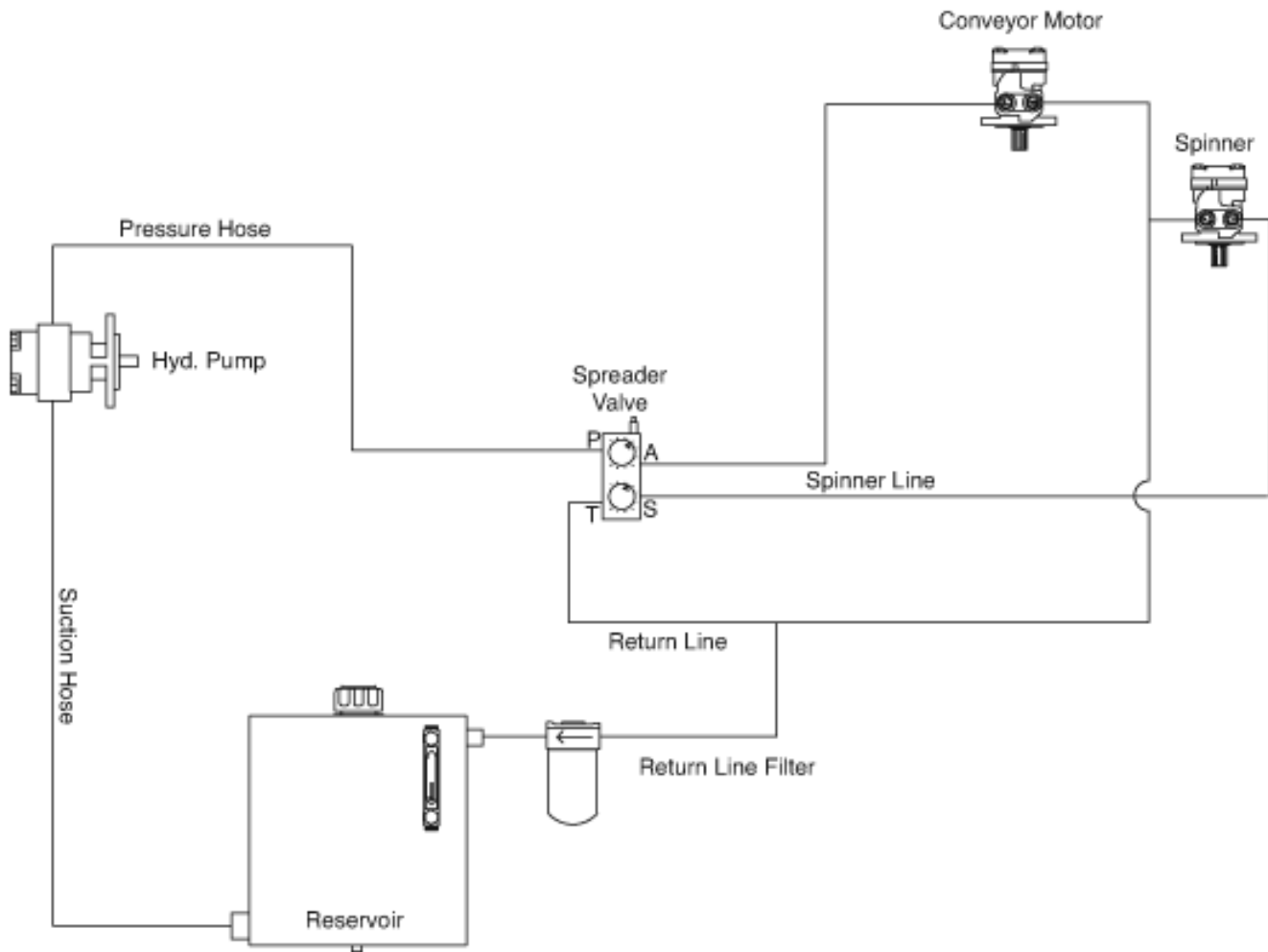
Install the lights and connect the wiring using the diagram below.



Matching View
Cole Hersee Plug



HYDRAULIC SCHEMATICS



MOTOR SPECIFICATIONS

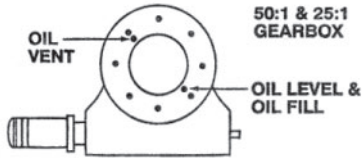
White Motor Specifications

Code	Displacement in ³ /rev (cm ³ /rev)	Max Speed RPM		Max Flow GPM (LPM)		Max Torque lb-in (Nm)			Pressure Δ PSI (Δ Bar)		
		Cont.	Inter.	Cont.	Inter.	Cont.	Inter.	*Stall	Cont.	Inter.	Peak
03	3.2 (52)	680	830	10 (38)	12 (45)	1200 (135)	1400 (158)	885 (100)	3000 (207)	3500 (241)	4000 (276)
04	4.6 (76)	670	950	14 (53)	20 (76)	1700 (191)	1975 (222)	1370 (155)	3000 (207)	3500 (241)	4000 (276)
05	5.4 (89)	680	840	16 (61)	20 (76)	2000 (225)	2400 (270)	1670 (189)	3000 (207)	3500 (241)	4000 (276)
06	6.8 (111)	680	850	20 (76)	25 (95)	2650 (298)	3100 (349)	2315 (261)	3000 (207)	3500 (241)	4000 (276)
08	7.7 (127)	580	740	20 (76)	25 (95)	3000 (338)	3500 (394)	2560 (289)	3000 (207)	3500 (241)	4000 (276)
10	10.0 (164)	460	580	20 (76)	25 (95)	3975 (448)	4550 (512)	3530 (397)	3000 (207)	3500 (241)	4000 (276)
12	12.5 (205)	370	460	20 (76)	25 (95)	5050 (569)	5800 (653)	4520 (509)	3000 (207)	3500 (241)	4000 (276)
14	15.5 (254)	290	370	20 (76)	25 (95)	6250 (704)	7100 (799)	5985 (674)	3000 (207)	3500 (241)	4000 (276)
18	17.9 (293)	250	320	20 (76)	25 (95)	7200 (811)	8250 (929)	6915 (779)	3000 (207)	3500 (241)	4000 (276)
24	24.9 (409)	180	230	20 (76)	25 (95)	8400 (946)	9050 (1019)	7850 (887)	2500 (172)	2750 (189)	3000 (207)

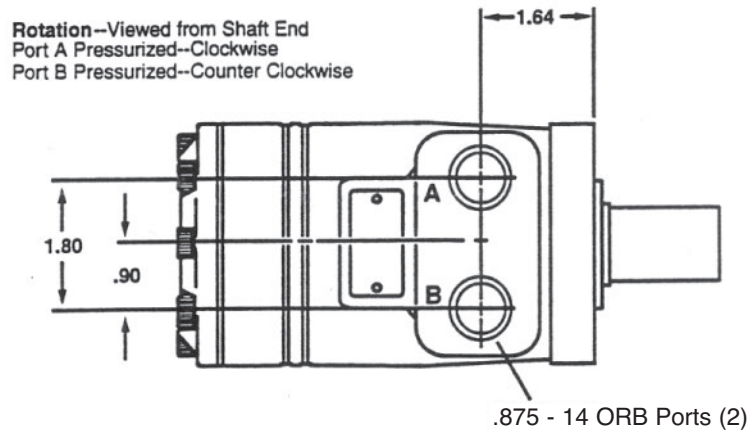
* Stall torque measured at 1 RPM at continuous pressure per SAE J746b.

WARNING

THE OIL LEVEL MUST BE CHECKED BEFORE PLACING THE UNIT INTO OPERATION! OIL LEVEL SHOULD BE CHECKED PERIODICALLY THEREAFTER.



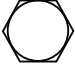


Ambient Temperature	Lubricant
-20° to 0° F	SAE 10W/30 or 10W/40 Automotive Oil
0° to 40° F	SAE 80 Gear Oil with Anti-Foaming Agent
40° to 100° F	SAE 90 Gear Oil with Anti-Foaming Agent
100° to 150° F	SAE 140 Gear Oil with Anti-Foaming Agent



GENERAL INFORMATION

- All references to right or left pertain to the spreader as viewed from the rear of the truck, looking in the direction of travel.
- Delivery of replacement parts is subject to our sales delivery terms.
- Use only **Monroe Truck Equipment** O.E.M. replacement parts. Failure to do so will void warranty.
- Replacement parts in this manual reflect our most common spreader items. If you do not find the part you require, please call your distributor.
- **Monroe Truck Equipment** reserves the right to make revisions or alterations to this parts manual.

TORQUE CHART

SIZE	 GRADE 2	 GRADE 5	 GRADE 8
1/4-20	50 IN-LBS	75 IN-LBS	9 FT-LBS
3/8-16	15 FT-LBS	23 FT-LBS	35 FT-LBS
1/2-13	35 FT-LBS	55 FT-LBS	80 FT-LBS
5/8-11	75 FT-LBS	110 FT-LBS	170 FT-LBS
3/4-10	130 FT-LBS	200 FT-LBS	280 FT-LBS
1-8	190 FT-LBS	480 FT-LBS	680 FT-LBS
1 1/4-7	380 FT-LBS	840 FT-LBS	1,360 FT-LBS

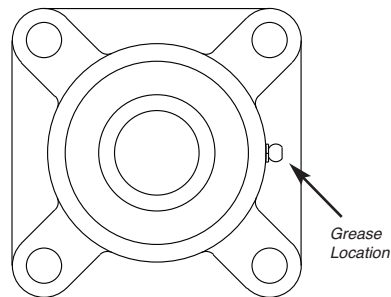
LUBRICATION

LUBRICATION

All bearing units are factory prelubricated and, therefore, do not require supplemental grease before service life begins. Relubrication, when administered correctly, can increase the life of a bearing substantially. We recommend the following general guidelines to maximize your bearing life:

RPM	Temperature	Environmental Condition	Interval
100	32°F-120°F	Clean	6-12 months
500	32°F-150°F	Clean	2-6 months
1,000	32°F-210°F	Clean	2 wks to 2 months
1,500	Over 210°F	Clean	Daily to weekly
Any	32°F-150°F	Dirty	Weekly to monthly
Any	Over 150°F	Dirty	Daily to 2 wks
Any	Any Temp.	Very Dirty	Daily to weekly
Any	Any Temp.	Extremely Dirty	Daily to weekly

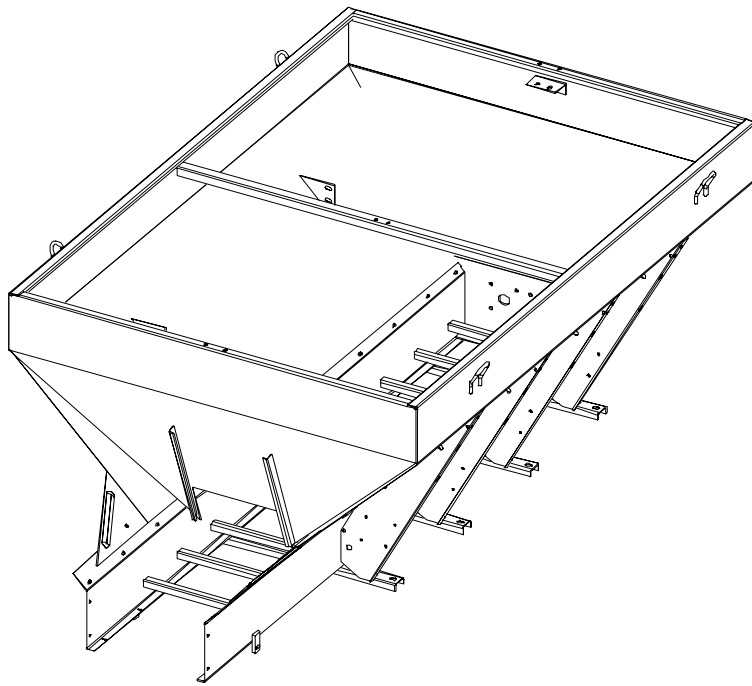
BEARING, 4-BOLT FLANGE



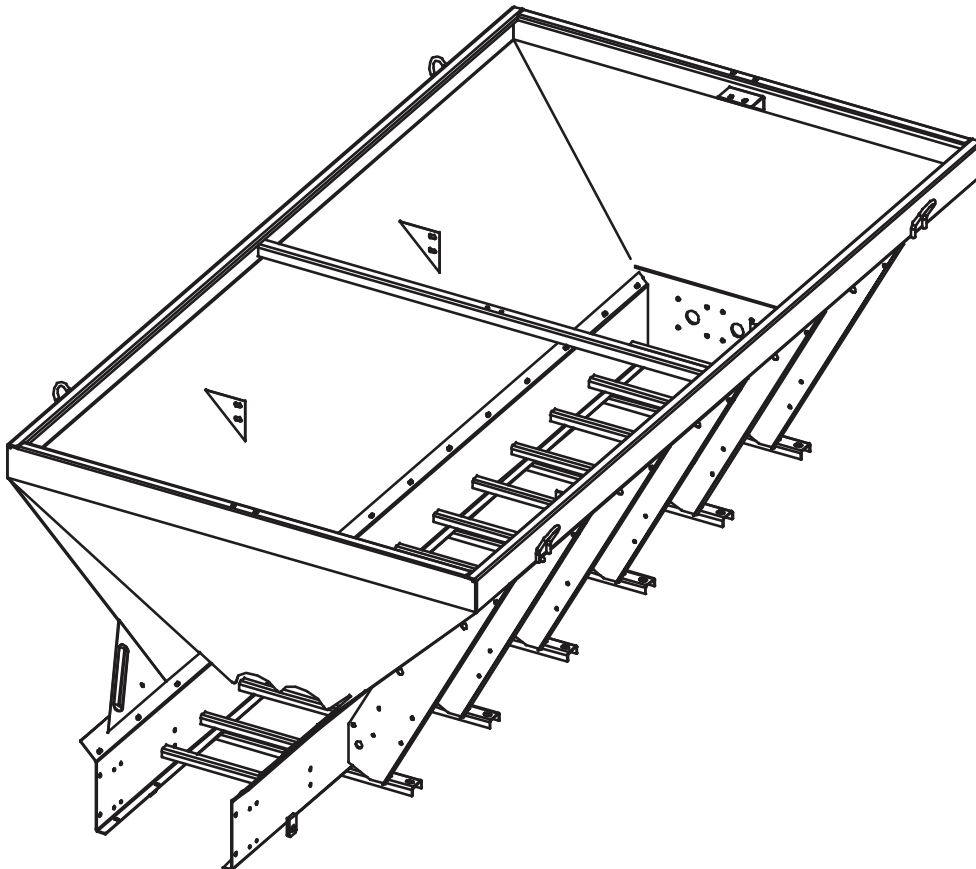
NOTE:

Over lubrication is a major cause of bearing failures. Please relubricate conservatively when unsure of bearing requirements. When selecting a bearing lubricant, your dealer suggest any lithium-based NLGI #2 grease. For operating temperatures higher than 210°F, please consult your dealer.

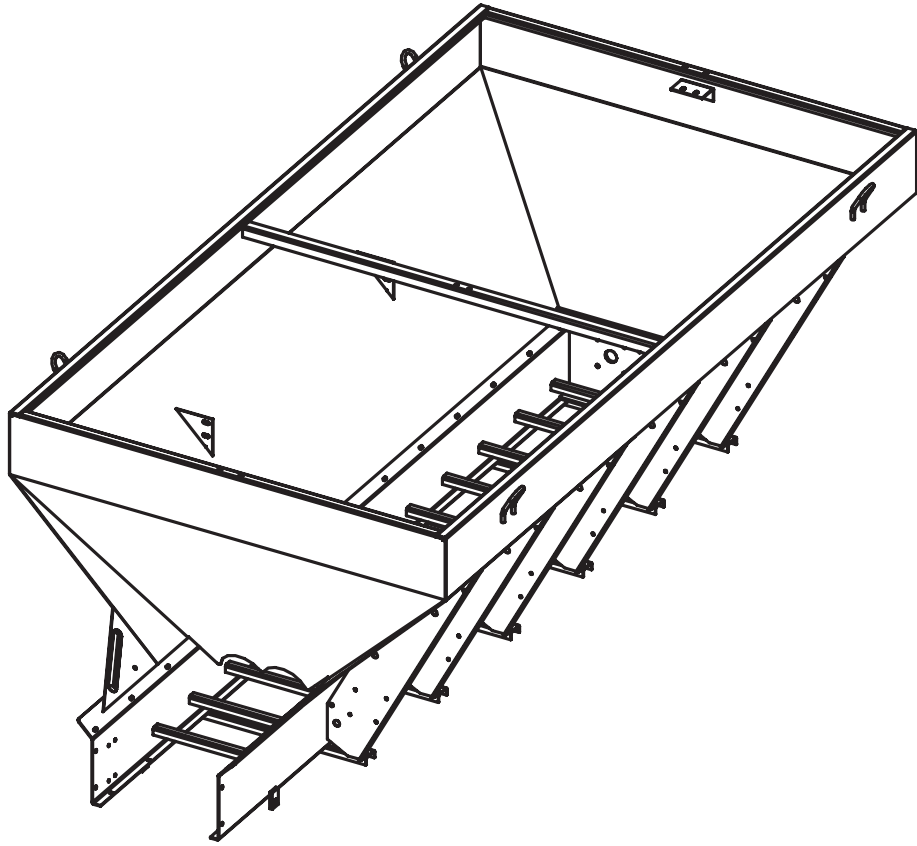
00104009 HOPPER WELDMENT, AUG MSV, 120-84-56, DUAL AUG



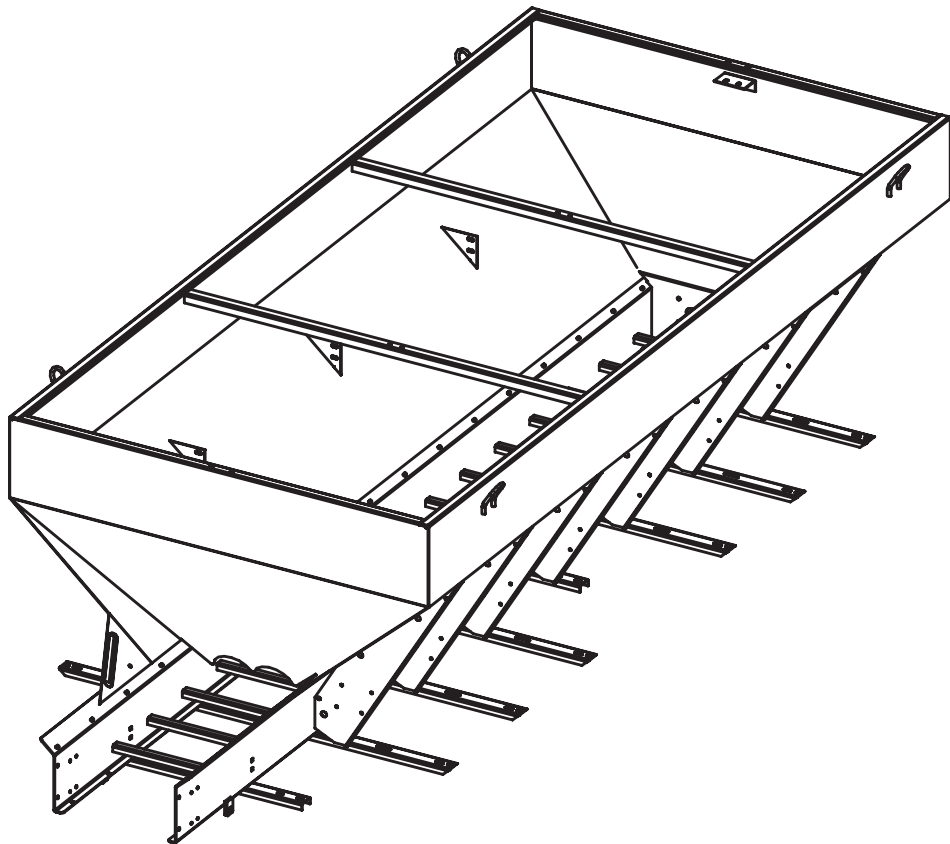
00119026 HOPPER WELDMENT, AUG MSV, 156-84-50, 304

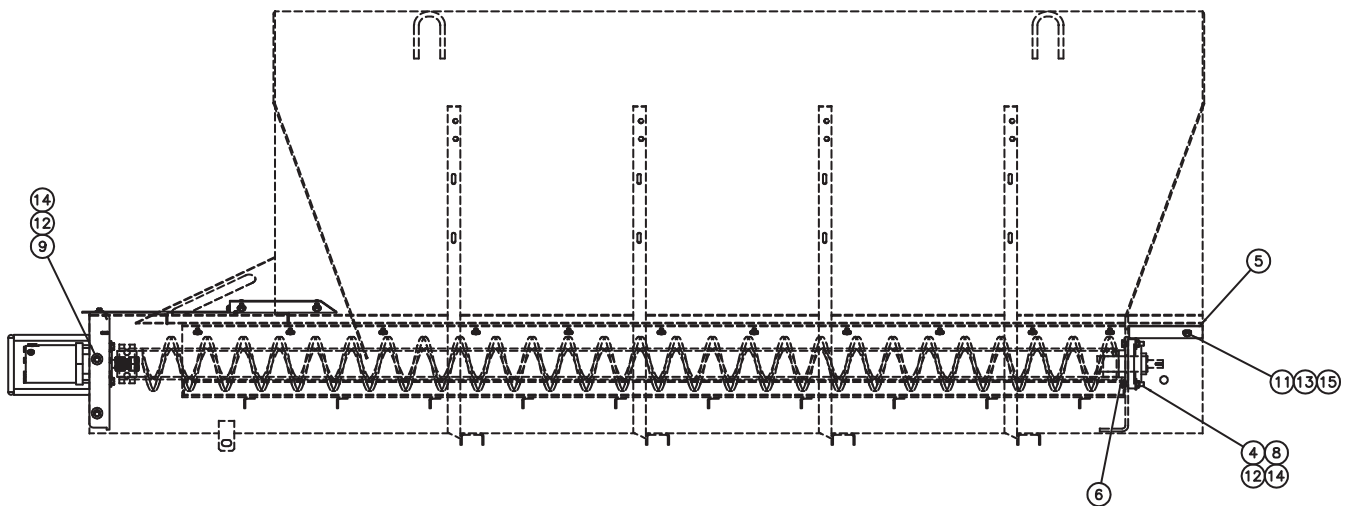
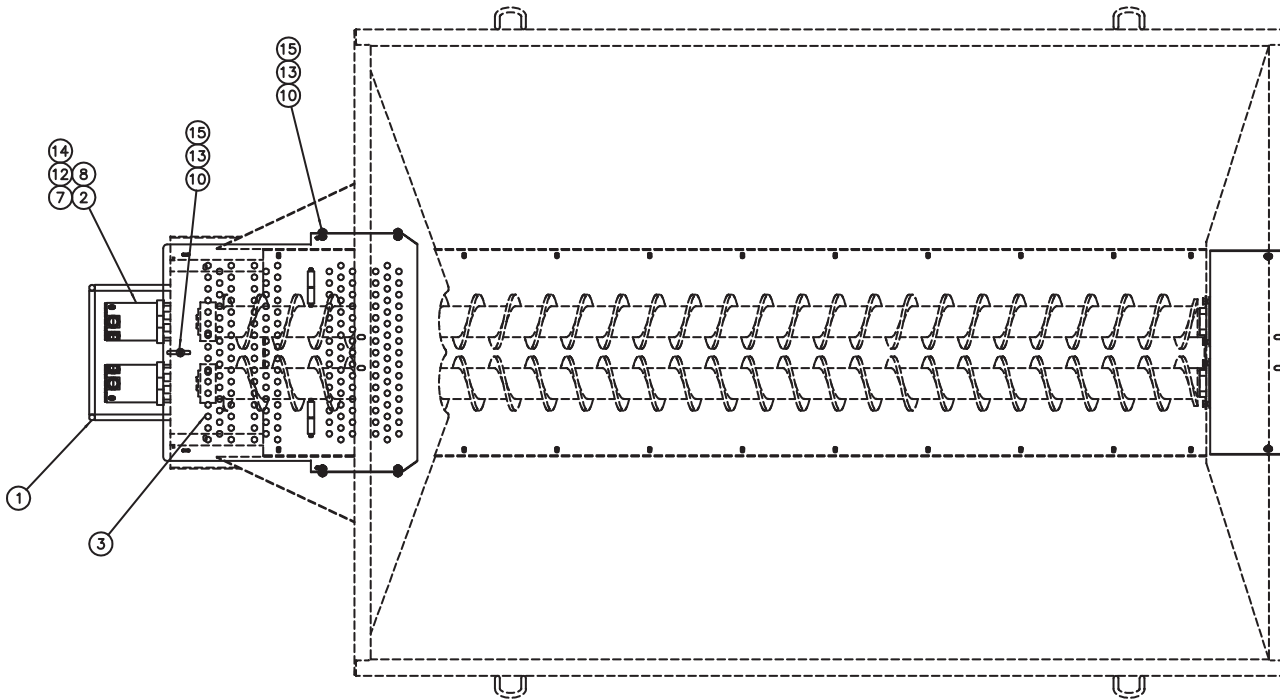


00122274 HOPPER WELDMENT, AUG MSV, 156-84-56, SF1
00129304 HOPPER WELDMENT, AUG MSV, 156-84-56, 304



00128320 HOPPER WELDMENT, AUG MSV, 180-84-62, D-AUG

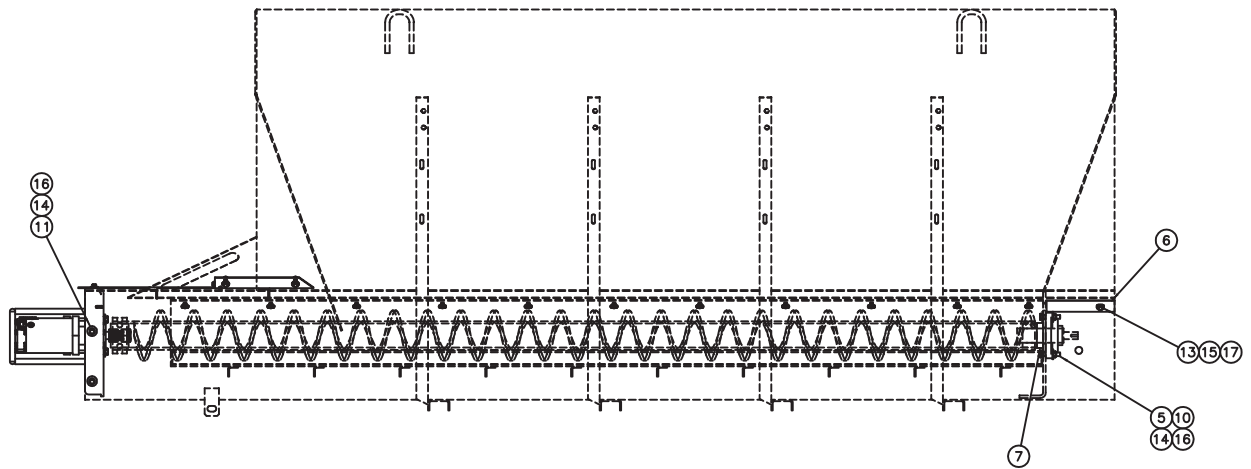
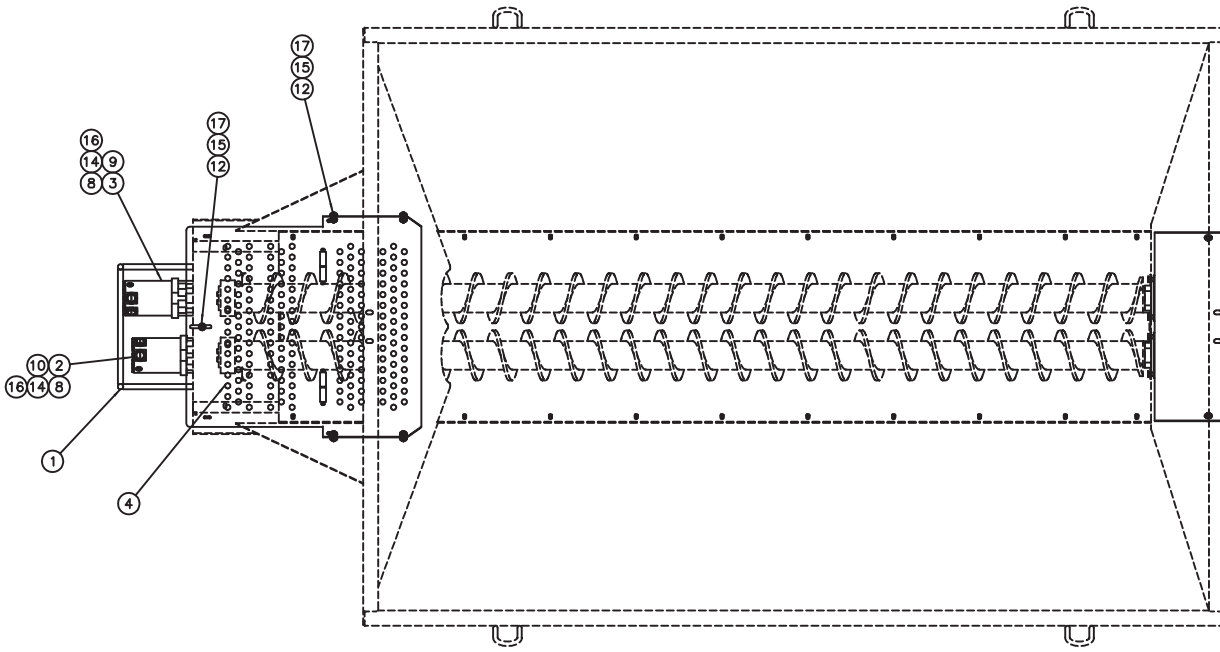




NOTE: Auger model v-boxes built prior to January 2008 used motor 05006128 and motor cage weldment 00057001-B

00104817 DRIVE KIT, MSV, DUAL AUGER

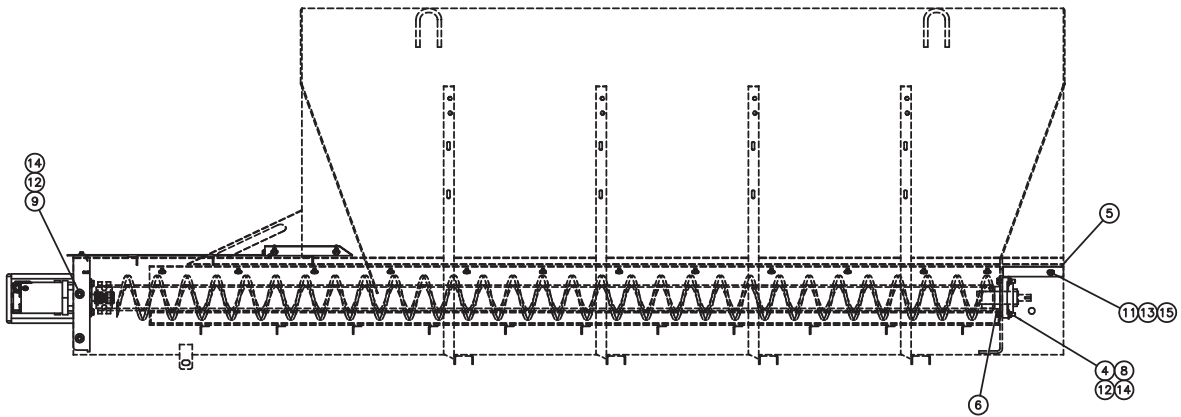
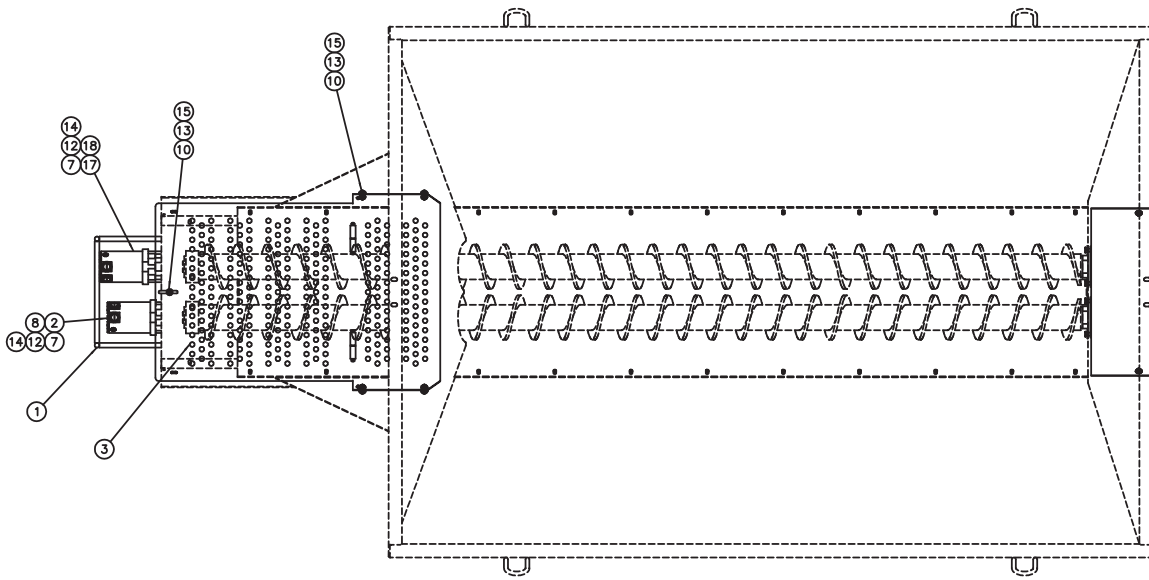
Item	Qty.	Part Number	Description
1	1	00125917-A	CAGE WLDMT,MTR MT,MSV,DUALAUGER
1	1	00125917-B	CAGE WLDMT,MTR MT,MSV,DUAL AUGER
2	2	05006445	MOTOR,HYD,WHITE,66CI,4B,14T,.0625 <i>See Page 46</i>
3	1	00125908-A	GUARD ASSY,AUGER,MSV,MS <i>See Page 21</i>
3	1	00125908-B	GUARD ASSY,AUGER,MSV,304
4	2	05030006	BEARING,2",4B FLANGE,MSV-MV,RELUBE,
5	1	00026209-A	COVER,FRONT BEARING,MSV,AUGER,MS
5	1	00026209-B	COVER,FRONT BEARING,MSV,AUGER,304
6	2	00012265	BUSHING,MSV AUGER DRIVE,3.5"ODx2"IDx.875
7	8	00049931-B	PIPE,MS,.500xSCH80x.500, SS
7	8	00049931-B	PIPE,SS,.500xSCH80x.500,304
8	16	05010695	BOLT .500-13 x 2.50 G8 HHCS ZC
8	16	05016207	BOLT .500-13 x 2.50 HHCS SST
9	4	05010691	BOLT .500-13 x 1.50 G8 HHCS ZC
9	4	05016096	BOLT .500-13 x 1.50 HHCS SST
10	5	05010644	BOLT .375-16 x 1.25 G8 HHCS ZC
10	5	05016049	BOLT .375-16 x 1.25 HHCS SST
11	2	05010643	BOLT .375-16 x 1.00 G8 HHCS ZC
11	2	Q5016034	BOLT .375-16 x 1.00 HHCS SST
12	20	05020847	NUT .500-13 GC TOPLOCK C&W
12	20	05020908	NUT .500-13 NYLON LOCK 316 SST
13	7	05020891	NUT .375-16 NYLON LOCK 316 SST
13	7	05020898	NUT .375-16 GC TOPLOCK C&W
14	40	05021309	WASHER .500 FLAT ZC
14	40	05021391	WASHER .500 FLAT SST
15	14	05021307	WASHER .375 FLAT ZC
15	14	05021390	WASHER .375 FLAT SST
16	.25	05051390	RUST PROOFER HEAVY DUTY



NOTE: Auger model v-boxes built prior to January 2008 used motor 05006128 and motor cage weldment 00057001-B

00125915-B DRIVE KIT, MSV, DUAL AUG, SPSNSR, 304

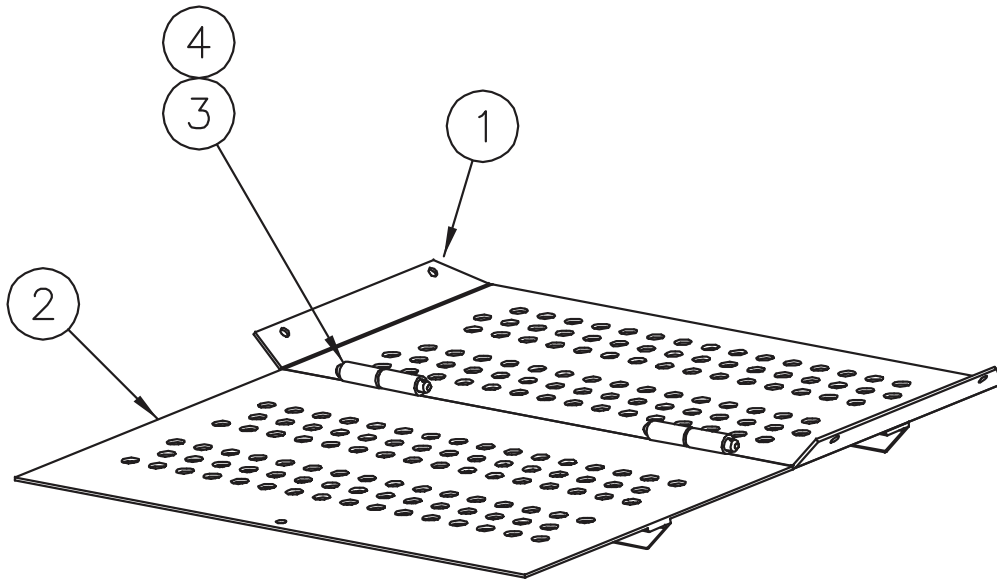
Item	Qty.	Part Number	Description
1	1	00125917-B	CAGE WLDMT,MTR MT,MSV,DUAL AUGER
2	1	05006445	MOTOR,HYD,WHITE,66CI,4B,14T,.0625 <i>See Page 46</i>
3	1	05006695	MOTOR,HYD,WHITE,63.9CI,4B,SPD <i>See Page 48</i>
4	1	00125908-B	GUARD ASSY,AUGER,MSV,304 <i>See Page 21</i>
5	2	05030006	BEARING,2",4B FLANGE,MSV-MV,RELUBE,
6	1	00026209-B	COVER,FRONT BEARING,MSV,AUGER,304
7	2	00012265	BUSHING,MSV AUGER DRIVE,3.5"ODx2"IDx.875
8	8	00049931-B	PIPE,SS,.500xSCH80x.500,304
9	4	05017053	BOLT .500-13 x 4.00 18-8,HHCS
10	12	05016207	BOLT .500-13 x 2.50 HHCS SST
11	4	05016096	BOLT .500-13 x 1.50 HHCS SST
12	5	05016049	BOLT .375-16 x 1.25 HHCS SST
13	2	05016034	BOLT .375-16 x 1.00 HHCS SST
14	20	05020908	NUT .500-13 NYLON LOCK 316 SST
15	7	05020891	NUT .375-16 NYLON LOCK 316 SST
16	40	05021391	WASHER .500 FLAT SST
17	14	05021390	WASHER .375 FLAT SST
18	.25	05051390	RUST PROOFER HEAVY DUTY



NOTE: Auger model v-boxes built prior to January 2008 used motor 05006128 and motor cage weldment 00057001-B

00094403-B DRIVE KIT,MSV,DUAL AUGER,COMBO,304

Item	Qty.	Part Number	Description
1	1	00125917-B	CAGE WLDMT,MTR MT,MSV,DUAL AUGER
2	1	05006445	MOTOR,HYD,WHITE,66CI,4B,14T,.0625 <i>See Page 46</i>
3	1	00125929-B	GUARD ASSY,AUGER,MSV,COMBO,304 <i>See Page 23</i>
4	2	05030006	BEARING,2",4B FLANGE,MSV-MV,RELUBE,
5	1	00026209-B	COVER,FRONT BEARING,MSV,AUGER,304
6	2	00012265	BUSHING,MSV AUGER DRIVE,3.5"ODx2"IDx.875
7	8	00049931-B	PIPE,SS,.500xSCH80x.500,304
8	12	05016207	BOLT .500-13 x 2.50 HHCS SST
9	4	05016096	BOLT .500-13 x 1.50 HHCS SST
10	5	05016049	BOLT .375-16 x 1.25 HHCS SST
11	2	Q5016034	BOLT .375-16 x 1.00 HHCS SST
12	20	05020908	NUT .500-13 NYLON LOCK 316 SST
13	7	05020891	NUT .375-16 NYLON LOCK 316 SST
14	40	05021391	WASHER .500 FLAT SST
15	14	05021390	WASHER .375 FLAT SST
16	.25	05051390	RUST PROOFER HEAVY DUTY
17	1	05006695	MOTOR,HYD,WHITE,63.9CI,4B,SPD <i>See Page 48</i>
18	4	05017053	BOLT .500-13 x 4.00 18-8,HHCS

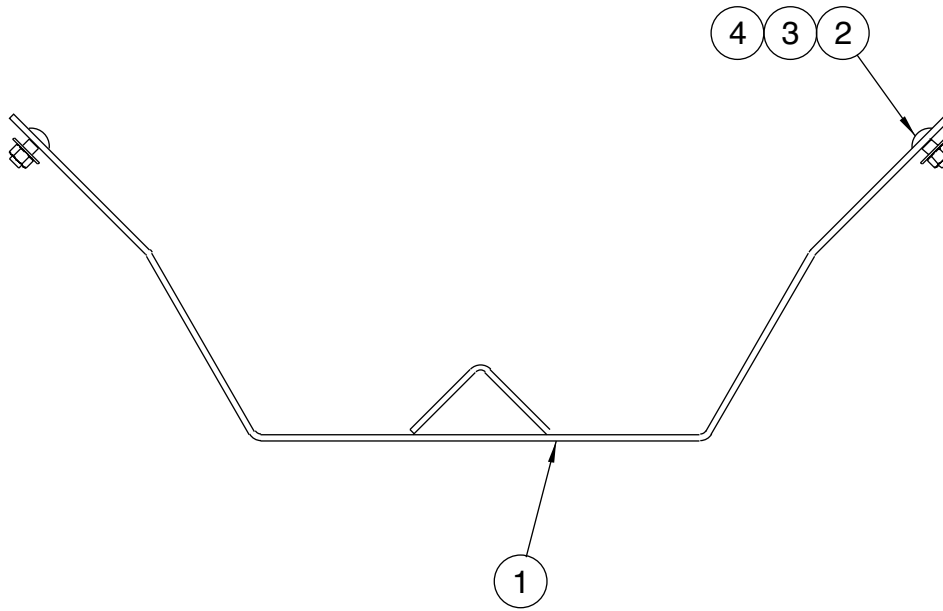


00125908-B GUARD ASSY,AUGER,MSV,304

Item	Qty.	Part Number	Description
1	1	00125903-B	AUGER GUARD WLDMT,MSV,304
2	1	00125907-B	DOOR WLDMT,AUGER GUARD,MSV,304
3	2	00029211-B	PIN SHAFT,HINGE,V-BOX,304
4	4	05022072	PIN .156 x .875 ROLL ZC

00125929-B GUARD ASSEMBLY, AUGER, COMBO, 304

Item	Qty	Part Number	Description
1	1	00125903-B	GUARD WELDMENT, AUGER, 304
2	1	00125927-B	DOOR WELDMENT, AUGER GUARD, 304
3	2	00029211-B	PIN SHAFT, HINGE, 304
4	4	05022072	PIN, .156 X .875, ROLL, ZINC



00094414 TROUGH KIT, DUAL AUGER

Item	Qty.	Part Number	Description
1	1	00094421	TROUGH WLDMT,DUAL AUG,MSV,10',304
2	22	05016003	BOLT .375-16 x 1.00 CRG SST
3	22	05020891	NUT .375-16 NYLON LOCK 316 SST
4	22	05021390	WASHER .375 FLAT SST

00119028-B TROUGH KIT, DUAL AUGER, 13', AUSST

Item	Qty	Part Number	Description
1	1	00119031-B	TROUGH WELDMENT, DUAL AUG, 13', AUSST
2	28	05016003	BOLT, .375-16 X 1, CARRIAGE, SST
3	28	05020891	NUT, .375-16, NYLON LOCK, 316 SST
4	28	05021390	WASHER, .375, FLAT, SST

00122276-A TROUGH KIT, DUAL AUG, MSV, 12', 304

Item	Qty	Part Number	Description
1	1	00122279-A	TROUGH WELDMENT, DUAL AUGER, 12', 304
2	26	05016003	BOLT, .375-16 X 1, CARRIAGE, SST
3	26	05020891	NUT, .375-16, NYLON LOCK, 316 SST
4	26	05021390	WASHER, .375, FLAT, SST

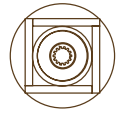
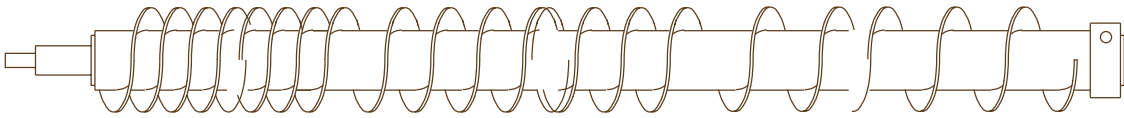
00130137-A TROUGH KIT, DUAL AUG, MSV, 14', 304

Item	Qty	Part Number	Description
1	1	00130138-A	TROUGH WELDMENT, DUAL AUG, 14', 304
2	34	05016003	BOLT, .375-16 X 1, CARRIAGE, SST
3	34	05020891	NUT, .375-16, NYLON LOCK, 316 SST
4	38	05021390	WASHER, .375, FLAT, SST

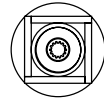
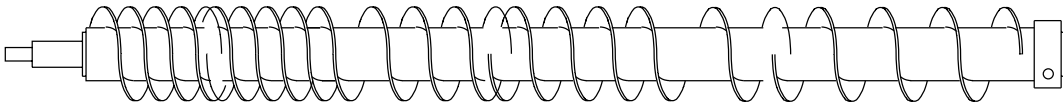
00103285 TROUGH KIT, DUAL AUGER, MSV, 16'

Item	Qty	Part Number	Description
1	1	00103284	TROUGH WELDMENT, DUAL AUG, 16', 304
2	68	05016003	BOLT, .375-16 X 1, CARRIAGE, SST
3	68	05020891	NUT, .375-16, NYLON LOCK, 316 SST
4	68	05021390	WASHER, .375, FLAT, SST

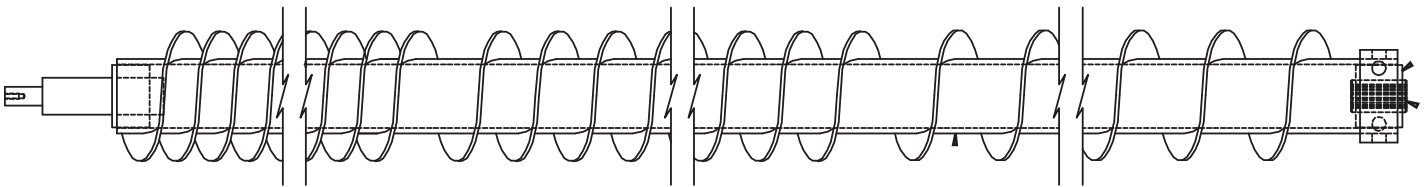
00094408 AUGER WELDMENT, MSV, 120, 7 OD, LH FLIGHT



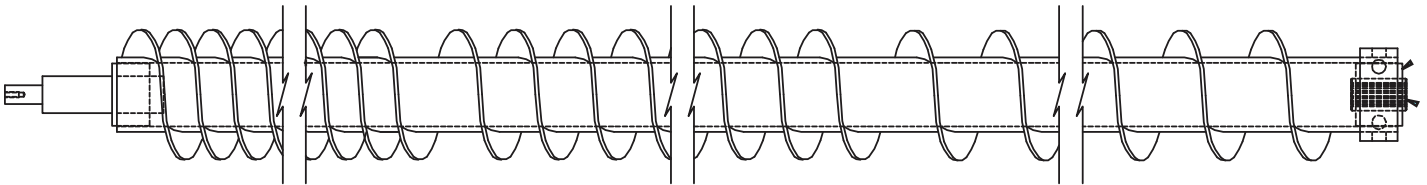
00094410 AUGER WELDMENT, MSV, 120, 7 OD, RH FLIGHT



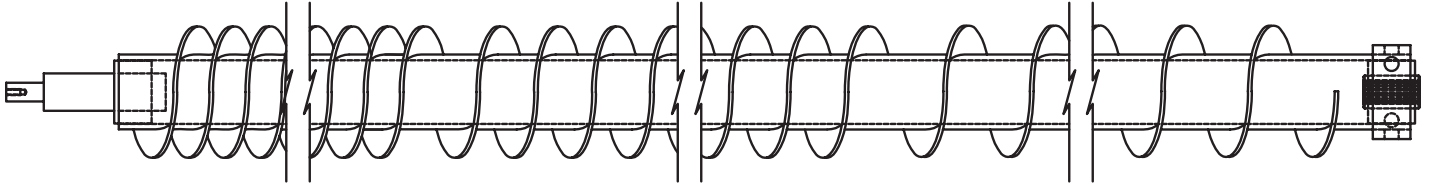
00119029 AUG WELDMENT, 156, LH FLIGHT



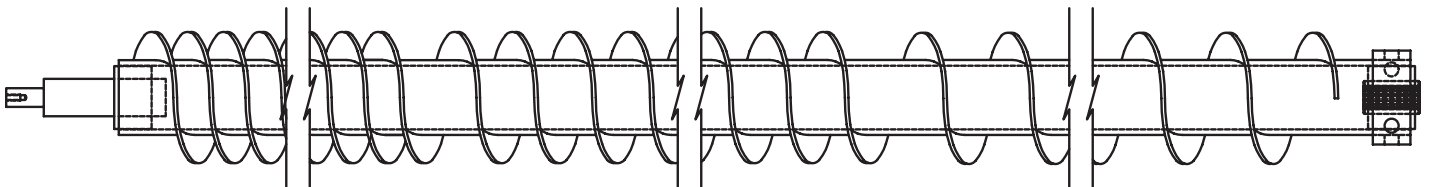
00119030 AUG WELDMENT, 156 RH FLIGHT

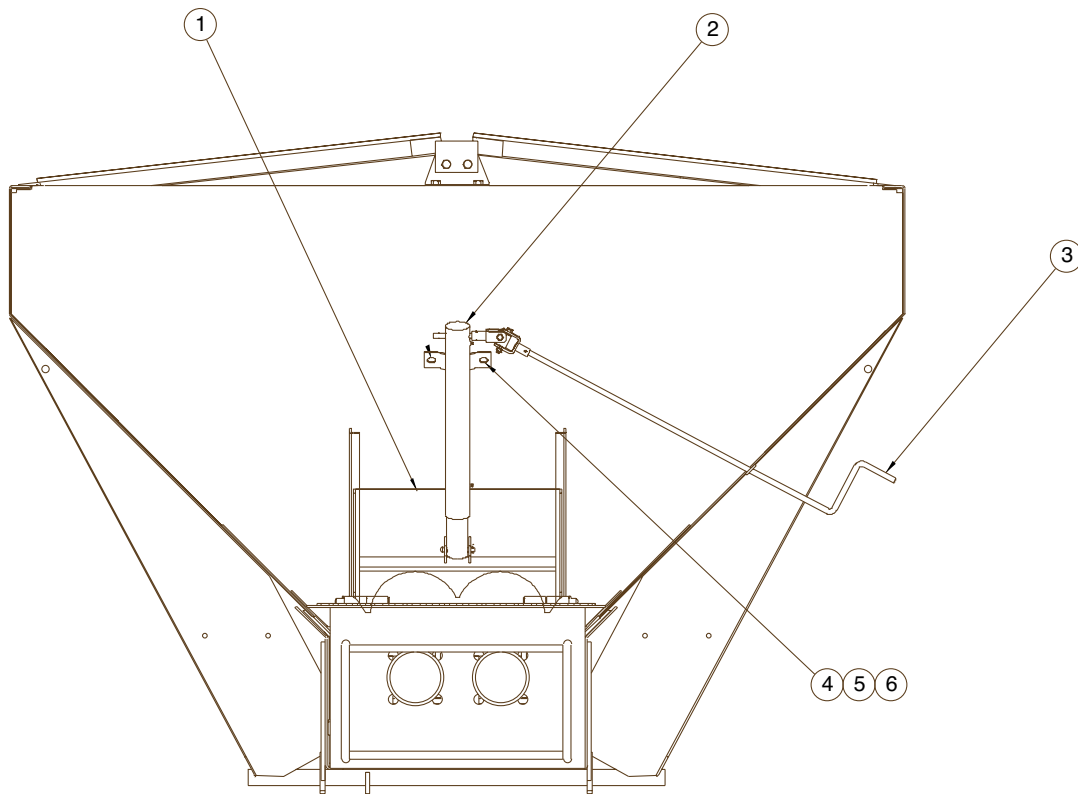


00103286 AUGER WELDMENT, 192, 7.0 OD, LH



00104022 AUGER WELDMENT, 192, 7.0 OD, RH

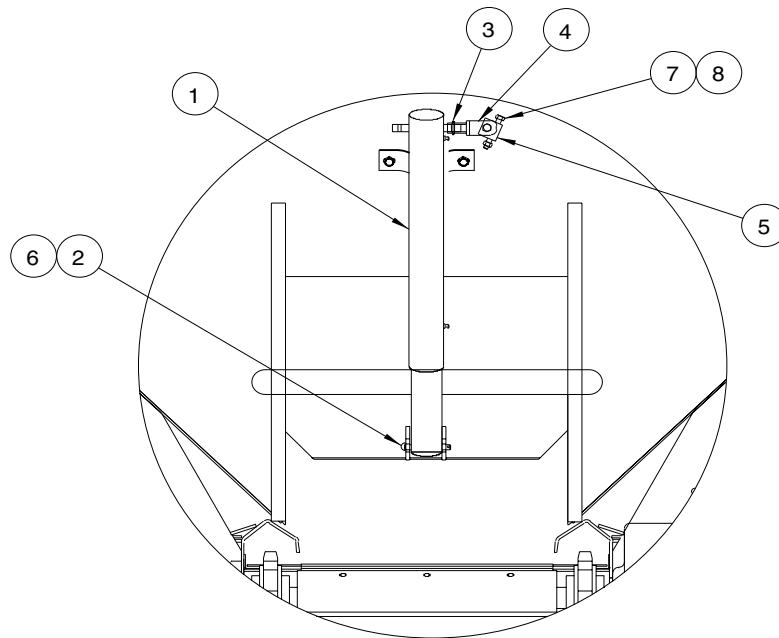




00094416-B DOOR KIT, MSV, RR, AUGER

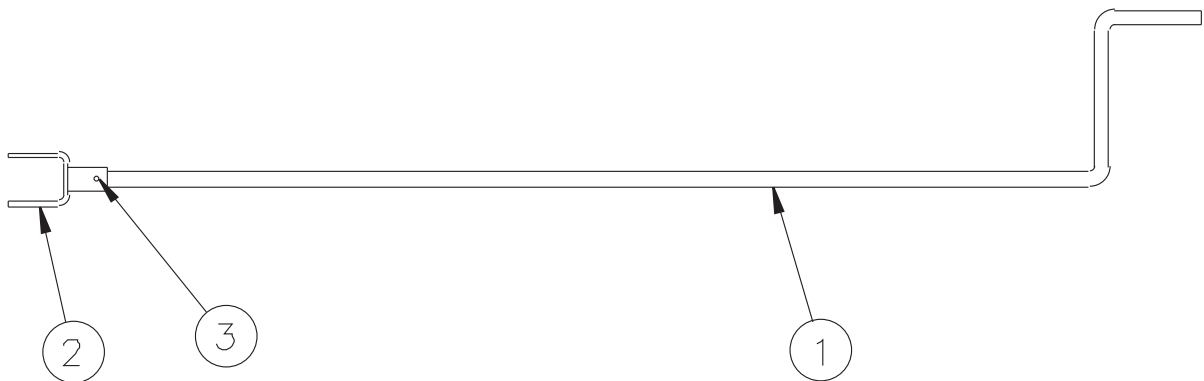
Item	Qty.	Part Number	Description
1	1	00094417-B	DOOR WLDMT,MSV,DUAL AUGER,.188.304
2	1	00042534	JACK ASSY,DOOR,REAR,CUT 4" <i>See Page 29</i>
3	1	00052285	CRANK ASSY,JACK,39,304,MV/MSV,W/CLEVIS <i>See Page 29</i>
4	2	05016034	BOLT .375-16 x 1.00 HHCS SST
5	2	05020891	NUT .375-16 NYLON LOCK 316 SST
6	2	05021390	WASHER .375 FLAT SST

NOTE: Door kits were discontinued after April 2006. No bodies built after this date had doors unless special ordered. Use Auger Guard 00105108 with the rear door.



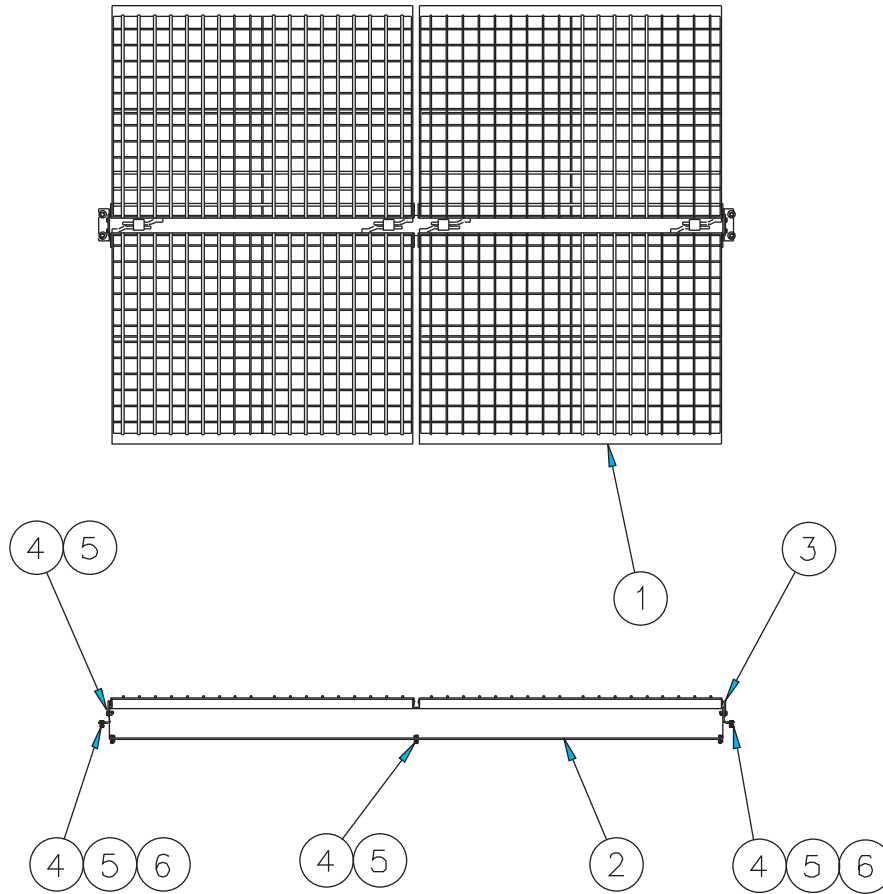
00042534 JACK ASSEMBLY

Item	Qty	Part Number	Description
1	1	05022134	PIN, 3/8" DIA. X 3" OAL, CLEVIS, ZINC
2	1	05022072	PIN, 5/32" X 7/8" ROLL, ZINC
3	1	00083703	JACK, DOOR, NEW STYLE, UNIVERSAL
4	1	05050258	CLEVIS, DOOR JACK
5	1	05051455	UNIVERSAL JOINT, UHMW, 1 1/2" SQUARE
6	1	05022021	PIN, 1/8" X 1", COTTER
7	2	05016143	BOLT, 5/16-18 X 2 1/4", G8, HHCS, SST
8	2	05020907	NUT, 5/16-18, GC, TOPLOCK, C&W



00052285 CRANK ASSEMBLY, JACK 39, 304 SST

Item	Qty.	Part Number	Description
1	1	00052292	CRANK, JACK, 39", 304 SST
2	1	05050258	CLEVIS, DOOR JACK
3	1	05022072	ROLL, PIN, .156 X .875



00022471-B TOP GRATE KIT, MV/MSV, 120 X 84 X 3, MS, SST HARDWARE

Item	Qty.	Part Number	Description
1	4	00056024	TOP GRATE WELDMENT, 5'
2	1	00022473	TOP BEAM WELDMENT, 10'
3	2	00053809-A	STOP, TOP BEAM, MS
4	14	05016047	BOLT, .5-13 X 1, HHCS, SST
5	14	05020908	NUT, .5-13, NYLON LOCK, 316 SST
6	28	05021391	WASHER, .5, FLAT, SST

00022480-B TOP GRATE KIT, 156 X 84 X 3, .375 HRR, 2.5 OPEN, MS, SST HDW

Item	Qty.	Part Number	Description
1	2	00056024	TOP GRATE WELDMENT, 60 X 84 X 3
2	4	00056016	TOP GRATE WELDMENT, 48 X 84 X 3
3	1	00022482	TOP BEAM WELDMENT, 13', MS
4	2	00053809-A	STOP, TOP BEAM, MS
5	14	05016047	BOLT, .5-13 X 1, HHCS, SST
6	14	05020908	NUT, .5-13, NYLON LOCK, 316 SST
7	28	05021391	WASHER, .5, FLAT, SST

00077330-A TOP GRATE KIT, 168 X 82 X 3

Item	Qty	Part Number	Description
1	4	00059823	TOP GRATE WELDMENT, 48 X 82 X 3, .375 HRR
2	4	00077321	TOP GRATE WELDMENT, 36 X 82 X 3, .375 HRR
3	1	00077331	TOP BEAM WELDMENT, 14', NM
4	2	00010020-A	STOP, TOP GRATE, 14-18, MS
5	16	05010691	BOLT, .5-13 X 1.5, G8, HHCS, ZINC
6	16	05020847	NUT, .5-13, GC, TOP LOCK, C&W
7	32	05021005	WASHER, .5, FLAT, MIL-CARB, SAE, ZINC

00099408 TOP GRATE KIT, 180 X 84 X 3, SS GRT

Item	Qty	Part Number	Description
1	6	00066349	TOP GRATE WELDMENT, 60 X 84 X 3, .375 SSR
2	1	00022488	TOP BEAM WELDMENT, 15', MS
3	2	00010020-A	STOP, TOP GRATE, 1418, MS
4	16	05016096	BOLT, .5-13 X 1.50, HHCS, SST
5	16	05020908	NUT, .5-13, NYLON LOCK, 316 SST
6	32	05021391	WASHER, .5, FLAT, SST--

00077317-A TOP GRATE KIT, 120X82X3

Item	Qty	Part Number	Description
1	4	00059823	TOP GRATE WELDMENT, 48 X 82 X 3, .375 HRR
2	4	00077321	TOP GRATE WELDMENT, 36 X 82 X 3, .375 HRR
3	1	00086327	TOP BEAM WELDMENT, 10, 2 SUPPORTS
4	2	00053809-A	STOP, TOP GRATE, 8-13, MS
5	16	05010691	BOLT, .5-13 X 1.5, G8, HHCS, ZINC
6	16	05020847	NUT, .5-13, GC, TOP LOCK, C&W
7	32	05021005	WASHER, .5, FLAT, MIL-CARB, SAE, ZINC

00064292-B TOP GRATE LOCK KIT, 8-10, SST HARDWARE

Item	Qty.	Part Number	Description
1	4	00023754	LOCK, TOP GRATE
2	8	05016034	BOLT, .375-16 X 1, HHCS, SST
3	8	05020891	NUT, .375-16, NYLON LOCK, 316 SST
4	16	05021390	WASHER, .375, FLAT, SST

00064293-B TOP GRATE LOCK KIT, 11-15, SS HARDWARE

Item	Qty	Part Number	Description
1	6	00023754	LOCK, TOP GRATE
2	12	05016049	BOLT, .375-16 X 1.25, HHCS, SST
3	12	05020891	NUT, .375-16, NYLON LOCK, 316 SST
4	24	05021390	WASHER, .375, FLAT, SST

00012420-B INVERTED V KIT, 10' & 11', 304SST			
ITEM	QTY	PART NUMBER	DESCRIPTION
1	1	00053103-B	INVERTED V,MV/MSV,10'-11',304
2	2	00053221-B	CROSS CHANNEL,INVERTED V,
3	2	00149636-B	HANGER,INVERTED V,MV/MSV,304
4	4	00150825-B	MTG BRACKET,INVERTED V,MV/MSV
5	1	00051803	BOLT KIT,INVERTED V,MV/MSV

00012443-B INVERTED V KIT, 12'-13', 304			
ITEM	QTY	PART NUMBER	DESCRIPTION
1	1	00053106-B	INVERTED V,MV/MSV,12'-13',304
2	2	00053221-B	CROSS CHANNEL,INVERTED V,
3	2	00149636-B	HANGER,INVERTED V,MV/MSV,304
4	4	00150825-B	MTG BRACKET,INVERTED V,MV/MSV
5	1	00051803	BOLT KIT,INVERTED V,MV/MSV

00012444-A/B INVERTED V KIT, 14'-15'			
ITEM	QTY	PART NUMBER	DESCRIPTION
1	1	00053109-A	INVERTED V,MV/MSV,14'-15',MS
1	1	00053109-B	INVERTED V,MV/MSV,14'-15',304
2	3	00053221-A	CROSS CHANNEL,INVERTED V,
2	3	00053221-B	CROSS CHANNEL,INVERTED V,
3	3	00149636-A	HANGER,INVERTED V,MV/MSV,MS
3	3	00149636-B	HANGER,INVERTED V,MV/MSV,304
4	6	00150825-A	MTG BRACKET,INVERTED V,MV/MSV
4	6	00150825-B	MTG BRACKET,INVERTED V,MV/MSV
5	1	00051802	BOLT KIT,INVERTED V,MV/MSV
5	1	00051804	BOLT KIT,INVERTED V,MV/MSV

DECAL KIT



CAUTION

Use care when mounting or dismounting.

IF DEFACED - ORDER PART NO. 05051409

05051409



CAUTION

1. Keep all guards/shields in place.
2. Make certain everyone is clear of machine before starting engine or operation.
3. Keep hands, feet and clothing away from power driven parts.
4. Disengage PTO, shut off hydraulic valve and set parking brake before leaving operator's position. Make sure all movement has stopped before servicing or unclogging machine.
5. Make sure machine is solidly supported when it is being mounted, dismounted or stored.
6. Use flashing lights when operating machine.

IF DEFACED - ORDER PART NO. 05051404

05051404



WARNING

Flying debris. Stay clear and wear eye protection. Failure to heed will result in serious injury.

IF DEFACED - ORDER PART NO. 05051407

05051407



WARNING

CRUSH HAZARD!
V-Box Spreader Must Be Empty When Lifting Into and Out of Truck Body

Failure to heed could result in serious injury or death.

IF DEFACED - ORDER PART NO. 05052885

05052885



DANGER

Moving conveyor/auger!

- Disconnect and lockout power before servicing, adjusting or cleaning.
- Keep hands, feet, hair and loose clothing away from moving parts at all times
- Never remove or modify guards or shields

Failure to heed will result in ~~injury~~ injury or death.

IF DEFACED - ORDER PART NO. 05051406

05051406

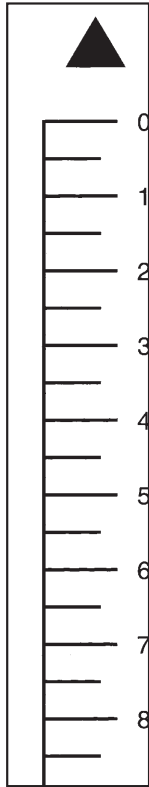


DANGER

Turning augers can crush and dismember. Turn engine off before servicing.

IF DEFACED - ORDER PART NO. 05051401

05051401



05051410



QUALITY CHECK

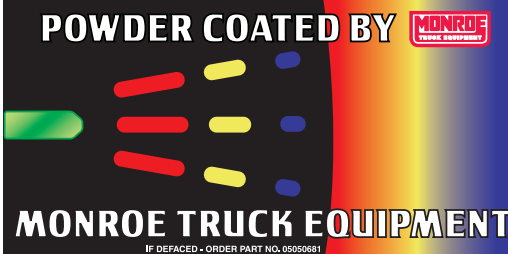
Inspected by:

05052311

05052311

MONROE SPREADER

05051405



POWDER COATED BY **MONROE TRUCK EQUIPMENT**

MONROE TRUCK EQUIPMENT

IF DEFACED - ORDER PART NO. 05050681

05050681

Used on Units with Powder Coat Finish

00071246 BEARING GREASE EXTENSION KIT, MSV AUG, FR-RR, 10'

Item	Qty.	Part Number	Description
1	1	00053181-A	ANGLE MOUNT, GREASE LINE, SINGLE
2	1	05051481	ADAPTER, GREASE LINE, 14-28 UNF
3	1	05050003	GREASE FITTING, .125 NPT STRAIGHT
4	1	05037660	COUPLING, .125" NPT, GALV
5	1	05037086	HOSE ASSEMBLY, GREASE EXT/REAR
6	1	05052475	CLAMP, .375 ID, CUSHIONED METAL
7	2	05016942	SCREW, TEK #10-16 X .75 410 SST
8	4	05050744	BUSHING, OPEN/CLOSED, SNAP

00071249 BEARING GREASE EXENTION KIT, FR/RR, 13'

Item	Qty	Part Number	Description
1	1	00053181-A	ANGLE MOUNT, GREASE LINE, SINGLE
2	1	05051481	ADAPTER, GREASE LINE, 14-28 UNF
3	1	05050003	GREASE FITTING, .125 NPT STRAIGHT
4	1	05037660	COUPLING, .125" NPT, GALV
5	1	05037089	HOSE ASSEMBLY, GREASE EXT/REAR, 13'
6	1	05052475	CLAMP, .375 ID, CUSHIONED METAL
7	2	05016942	SCREW, TEK #10-16 X .75 410 SST
8	6	05050744	BUSHING, OPEN/CLOSED, SNAP

**00071250 BEARING GREASE EXT KIT, AUG FR-RR, 14'
00071253 BEARING GREASE EXT KIT, AUG, FR-RR, 17'**

Item	Qty	Part Number	Description
1	1	00053181-A	BRACKET, EXT, MS
2	1	05051481	ADAPTER, GREASE LINE, 14-28, UNF
3	1	05050003	GREASE FITTING, .125 NPT STR
4	1	05037660	COUPLING, .125" NPT, GALV
5	1	05037090 05038077	HOSE ASSEMBLY, GREASE EXT/REAR, (14') HOSE ASSEMBLY, GREASE EXT/REAR (17')
6	1	05052475	CLAMP, .375" CUSHIONED METAL, #6, .5" WIDE, SST
7	2	05016942	SCREW, TEK, #10-16 X .75", 410 SST
9	6	05050744	BUSHING, OPEN/CLOSED, SNAP, .453 ID <i>(QTY. 8 USED ON 17' BODY)</i>

00077329-A SPILL SHIELD KIT, SIDE, MS

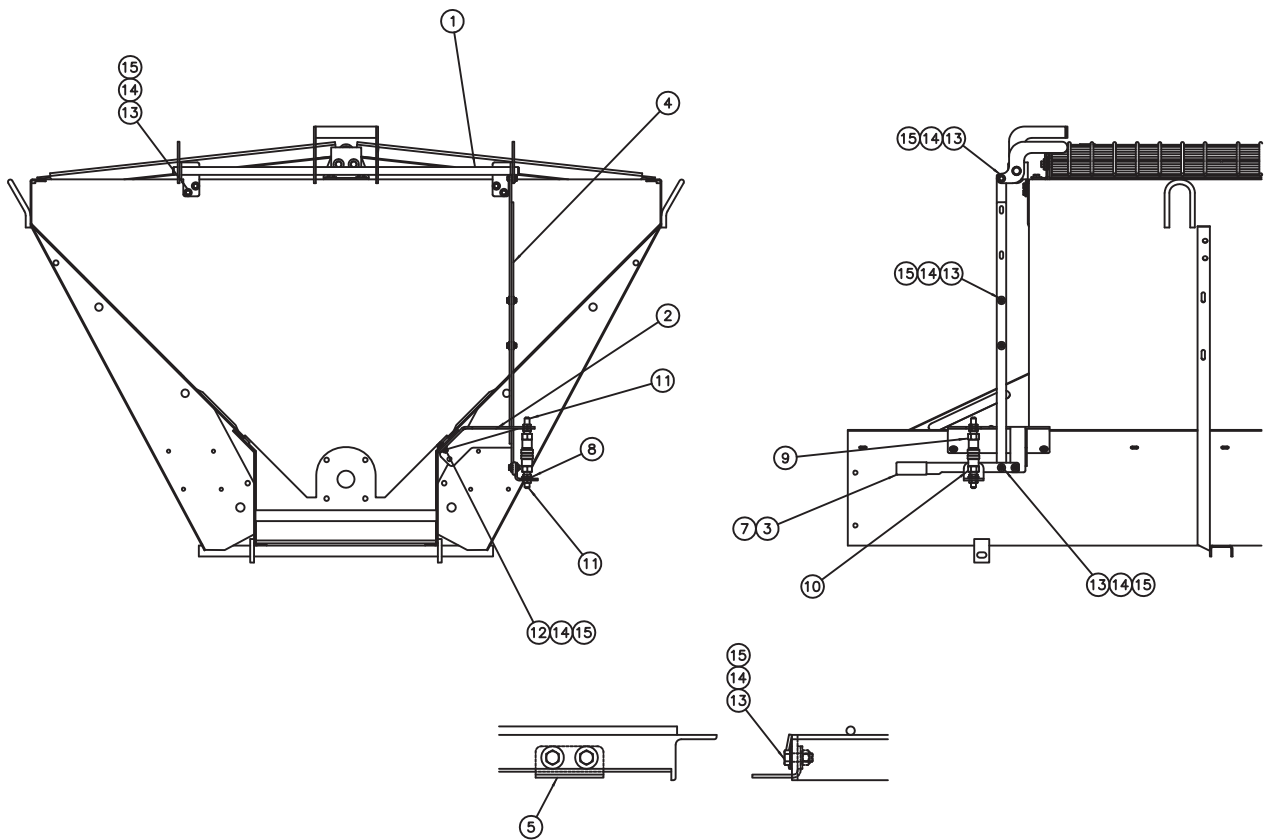
Item	Qty	Part Number	Description
1	2	00074975	SPILL SHIELD, SIDE, 14' X 24 RUBBER
2	30	05021162	FENDER WASHER, .375, ZINC
3	30	05010645	BOLT, .375-16 X 1.50, G8, HHCS, ZINC
4	30	05020898	NUT, .375-16, GC, TOP LOCK, C&W

00016674-A SPILL SHIELD KIT, FR, MS

Item	Qty	Part Number	Description
1	1	00077615-A	SPILL SHIELD WELDMENT, FR, 24, MS
2	8	05010642	BOLT, .375-16 X .875, G8, HHCS, ZINC
3	8	05020898	NUT, .375-16, GC, TOP LOCK, C&W
4	16	05021307	WASHER, .375, FLAT

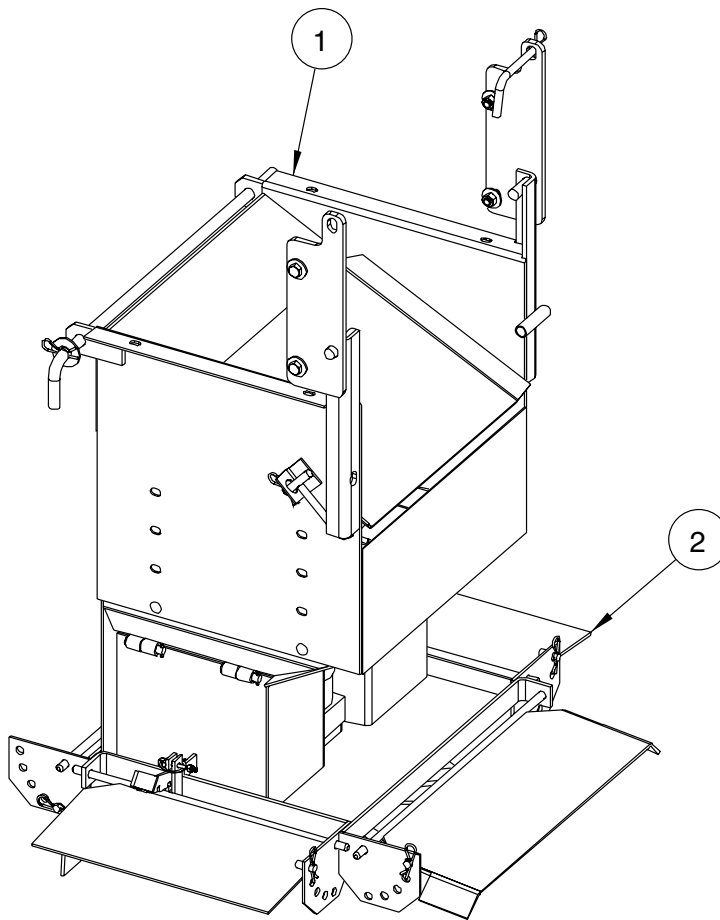
00077328-A SPILL SHIELD KIT, SIDE, MS

Item	Qty	Part Number	Description
1	2	00074974	SPILL SHIELD, SIDE, 10' X 24 RUBBER
2	22	05021162	FENDER WASHER, .375 ZINC
3	22	05010645	BOLT, .375-16 X 1.50, G8, HHCS, ZINC
4	22	05020898	NUT, .375-16, GC, TOP LOCK, C&W



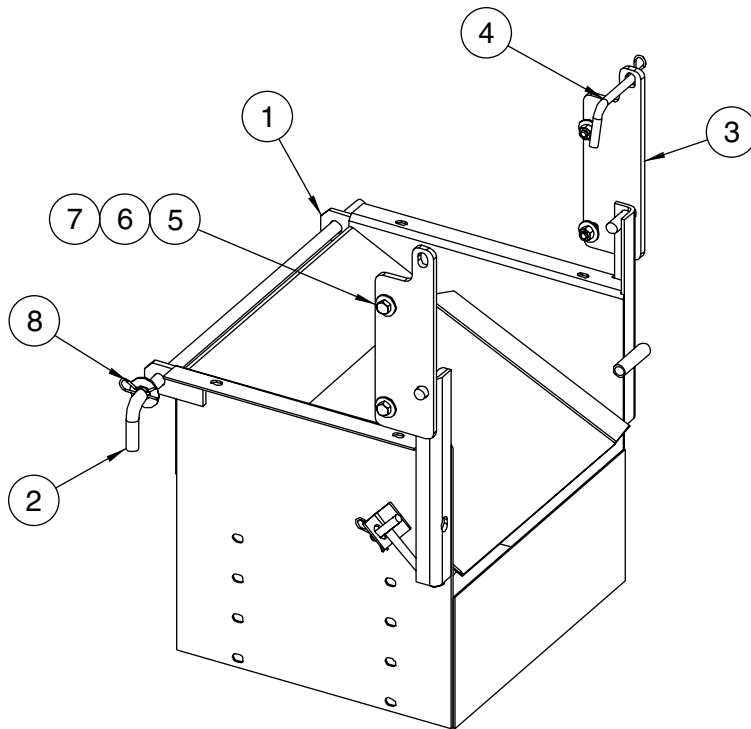
00138075-A HYD INT SHUTOFF KIT, MSV, AUG

Item	Qty.	Part Number	Description
1	1	00130765-A	BAR WLDMT,MSV AUG,INT SHUTOFF
2	1	00138074-A	MTG PL WLDMT,.50 CPLR,MSV,HYD
3	1	00130781-A	CONNECTION LEVER,MSV AUG,INT
4	2	00130783-A	LINKAGE BAR,MSV AUG,INT
5	4	00130782-A	LOCKING BRKT,TPG,MSV AUG,INT
6	1	00133682-A	CONNECTION PL,HYD INTRPT,MCV
7	1	05052759	HANDLE,GRIP,RECTANGULAR,.25 X
8	1	05038270	GASKET,FLANGE,1",EPDM,F/1"
9	1	FF-502-8FP	HYD FITNG,COUPLER HYD,PARKER
10	1	FF-501-8FP	HYD FITNG,COUPLER HYD,PARKER
11	2	2706-LN-8-8	HYD FITNG,ASSY,BHD CONNECTOR
12	2	05013987	BOLT .375-16 x 1.25 G5 CRG ZC
13	18	05010643	BOLT .375-16 x 1.00 G8 HHCS ZC
14	20	05020898	NUT .375-16 GC TOPLOCK C&W
15	38	05021307	WASHER .375 FLAT ZC

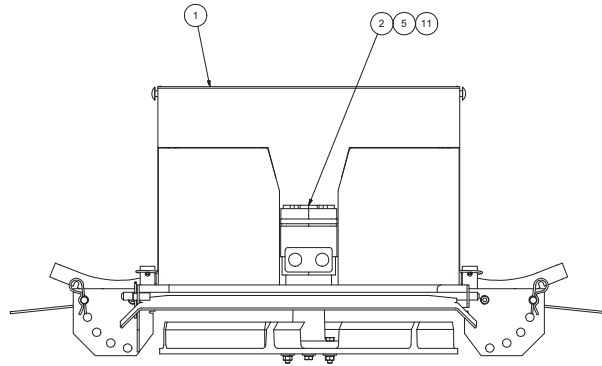
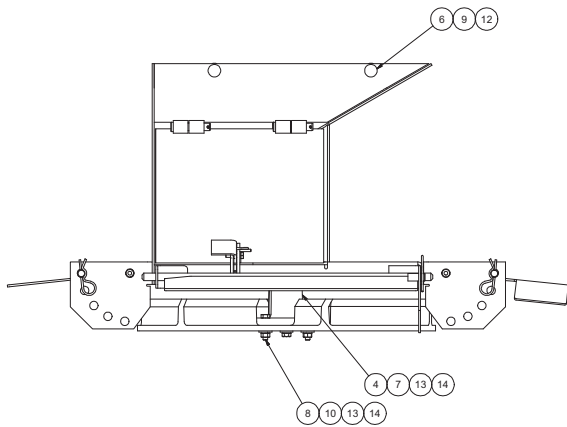
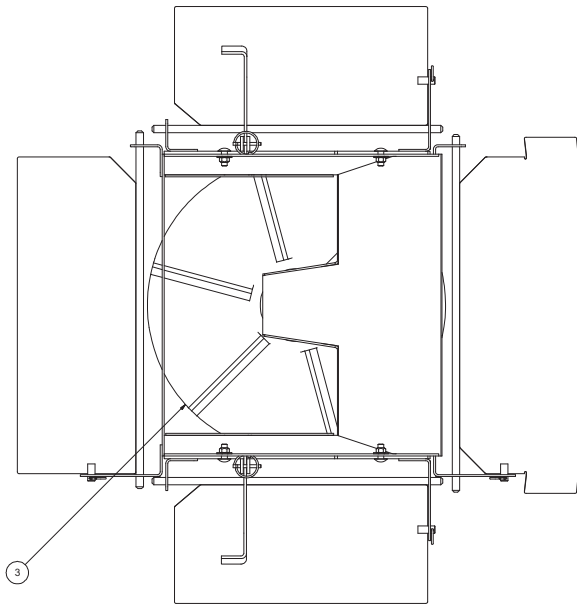


**00067509-D SPINNER ASSEMBLY, AUG MSV, STD, 304
10GA, BLK POLYDISC, HYD, TIPUP**

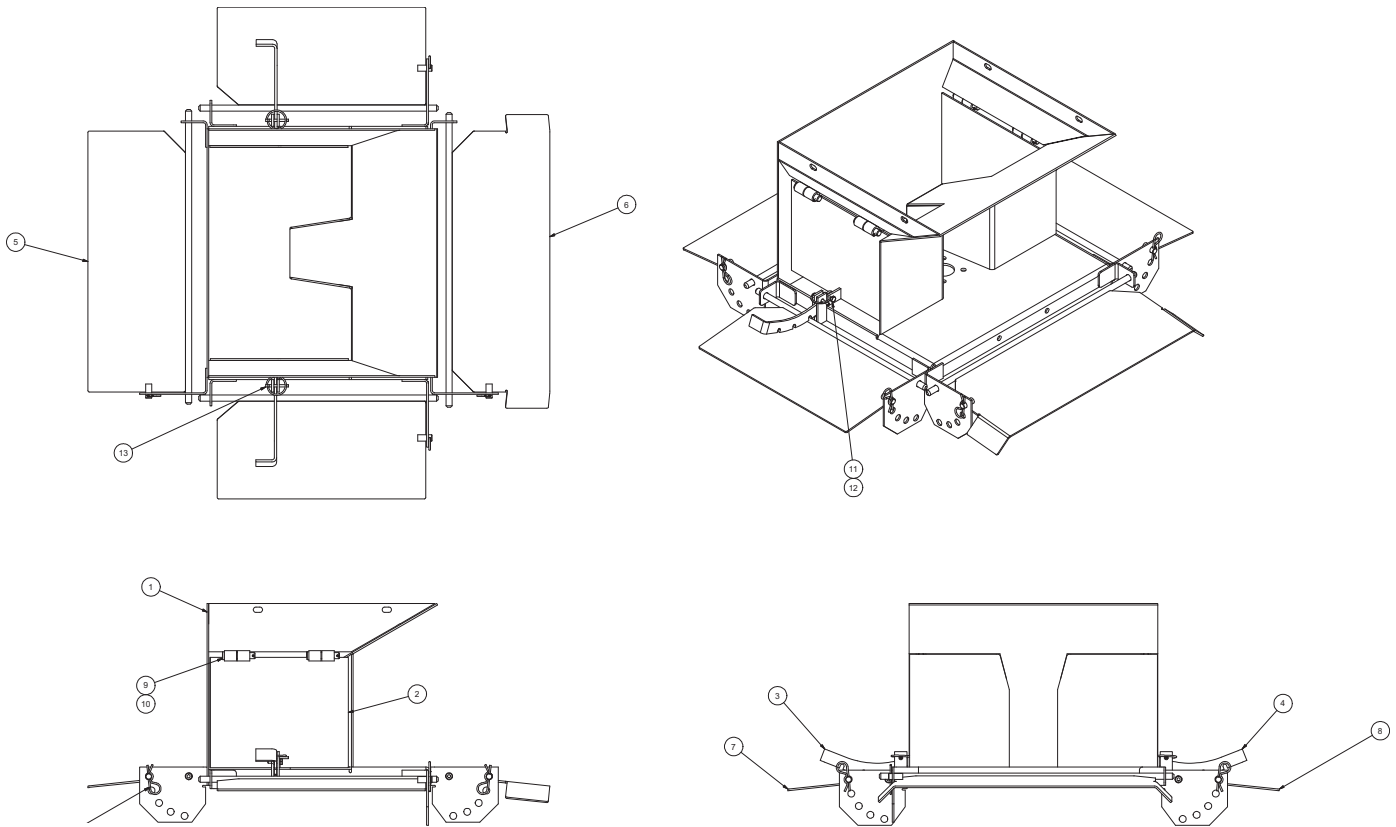
Item	Qty.	Part Number	Description
1	1	00065915-B	CHUTE ASSEMBLY, AUG MSV, 304, TIP-UP <i>See Page 39</i>
2	1	00141787-B	SPINNER ASSEMBLY, MV/MSV <i>See Page 40</i>



00065915-B CHUTE ASSEMBLY, AUG MSV, 304 TIP UP			
Item	Qty.	Part Number	Description
1	1	00026694-B	CHUTE WLDMT,AUG,MSV,TIP-UP,304,10GA
2	1	00022880	LATCH ROD ASSY,MS,TIP-UP SPNR,MV/MSV
3	2	00146155	HINGE PL,SPNR,MSV AUG,TIP-UP
4	1	05022136	PIN,.50 x 4.50 4.0 GRIP,BENT,ZC
5	4	05016204	BOLT .500-13x1.75 HHCS SST
6	4	05020908	NUT .500-13 NYLON LOCK 316 SST
7	8	05021391	WASHER .500 FLAT SST
8	2	05022035	PIN HAIR #11,ZC



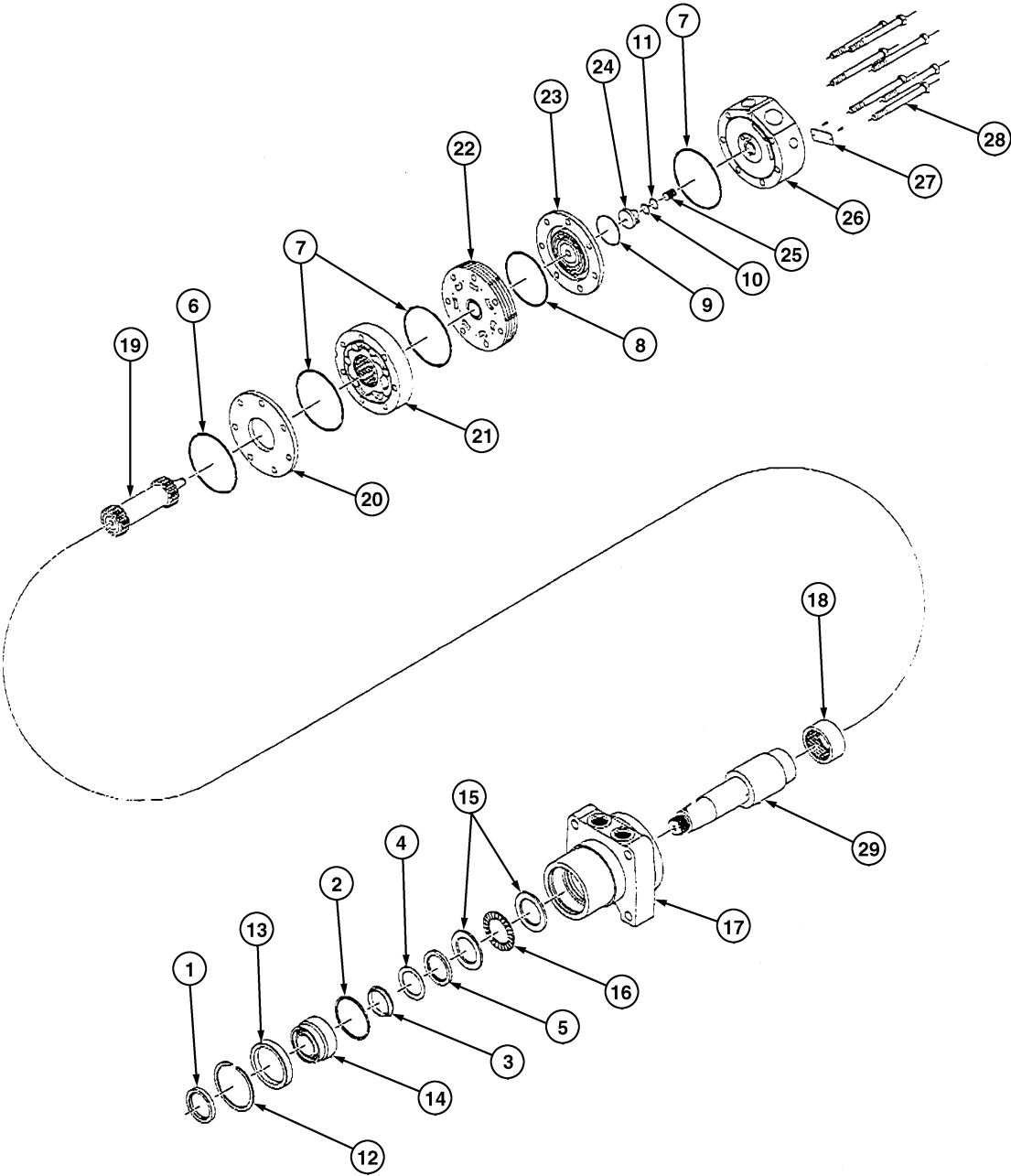
00141787-B SPINNER ASSY,LOWER,V-BOX,304,10GA,POLY DISC				
Item	Qty.	Part Number	Description	
1	1	00141784-B	CHUTE ASSY,SPNR,LWR,10GA,304	<i>See Page 41</i>
2	1	05006673	MOTOR,HYD,WHITE,3.2CI,4B,1"EXT	
3	1	05050794	DISC,SPINNER,20 CCW,POLY,RED	
4	1	05050054	HUB,SPINNER ASSY,EXT SFT,W/	
5	4	05016050	BOLT .375-16 x .875 HHCS SST	
6	4	05016003	BOLT .375-16 x 1.00 CRG SST	
7	1	05016150	BOLT .313-18 x 4.00 HHCS SST	
8	4	05016140	BOLT .313-18 x 1.50 HHCS SST	
9	4	05020891	NUT .375-16 NYLON LOCK 316 SST	
10	4	05020855	NUT .313-18 HEX SST	
11	4	05021392	WASHER .375 LOCK SST	
12	4	05021390	WASHER .375 FLAT SST	
13	5	05021404	WASHER .313 FLAT SST	
14	5	05021407	WASHER .313 LOCK SST	



00141784-B CHUTE ASSEMBLY, SPINNER, LOWER, 10GA, 304

Item	Qty.	Part Number	Description
1	1	00141773-B	SPINNER WLDMT,V-BOX,LOWER,304
2	2	00141788-B	RESTRICTOR GATE WLDMT,SPNR
3	1	00028011-B	GATE ADJUSTING BAR,SPNR,MV/MSV
4	1	00028012-B	GATE ADJUSTING BAR,SPNR,MV/MSV
5	1	00062116-B	DEFLECTOR WLDMT,SPNR,MV/MSV,RR
6	1	00062127-B	DEFLECTOR WLDMT,SPNR,FR,MV/MSV
7	1	00062104-B	DEFLECTOR WLDMT,SPNR,MV/MSV
8	1	00062101-B	DEFLECTOR WLDMT,SPNR,MV/MSV
9	4	05022069	PIN .500 x 2.500 CLEVIS,SS
10	4	05022072	PIN .156 x .875 ROLL ZC
11	2	05016040	BOLT .250-20 x 1.00 HHCS SST
12	2	05020906	NUT .250-20 NYLON LOCK 316 SST
13	2	05022106	PIN .188 LYNCH
14	4	05022035	PIN #11 HAIR ZC

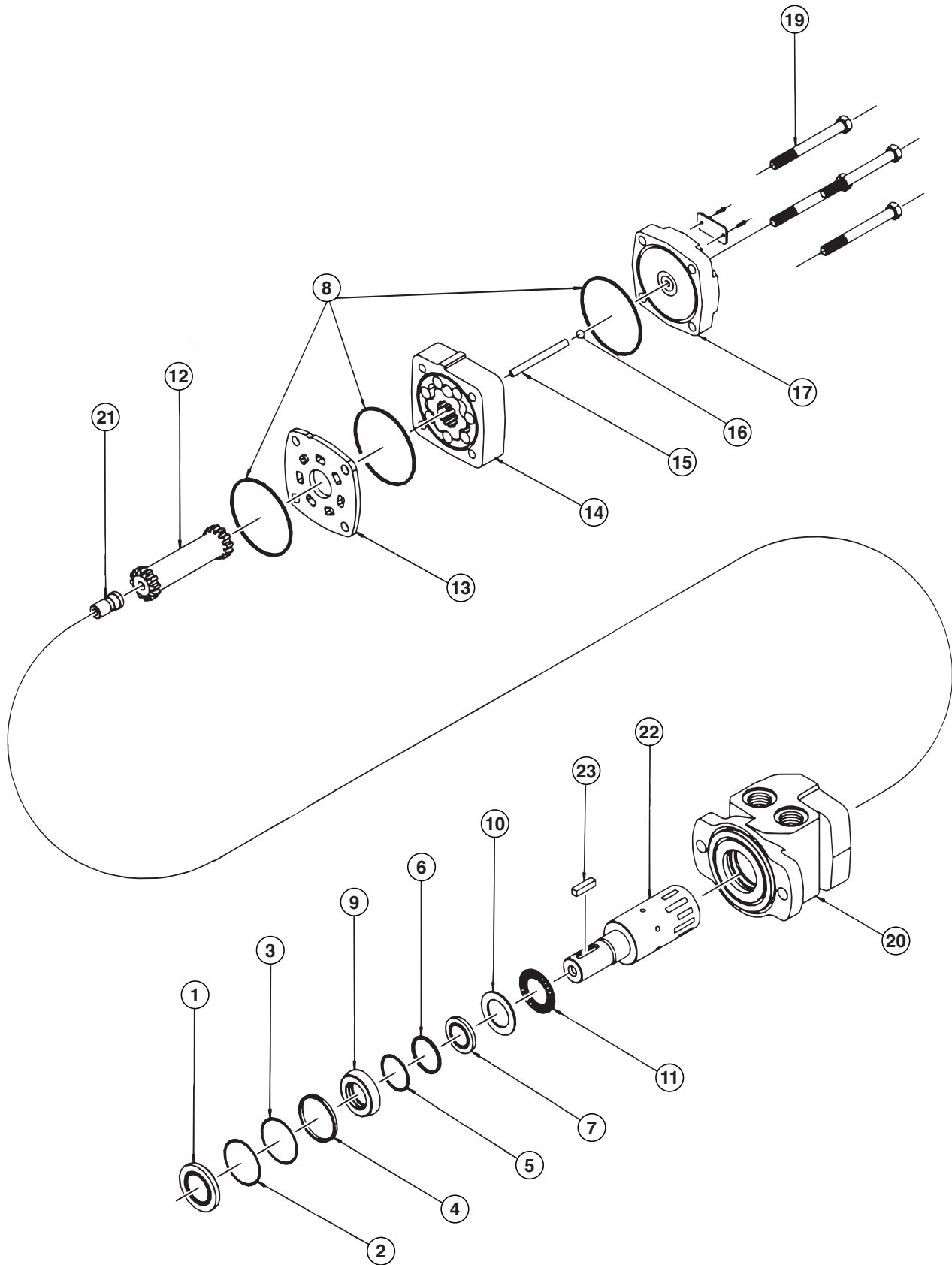
05006128 -- MOTOR, DT, 1 1/2" BEARING



MOTOR PARTS BREAKDOWN

ITEM	QTY	PART #	DESCRIPTION
	1	05006230	Seal Kit <i>(Items 1-11 are included in the Seal Kit and can not be purchased separately.)</i>
1	1	--	Seal, Dust
2	1	--	Seal, High Pressure
3	1	--	Shim, Metal Backup
4	1	--	Seal, Teflon Backup
5	1	--	Seal, Shaft
6	1	--	Seal, Housing
7	3	--	Seal, Body
8	1	--	Seal, Manifold
9	1	--	Seal, Commutator
10	1	--	Seal, O-ring
11	1	--	Seal, Teflon Backup
12	1	05006231	Ring, Snap, Retaining
13	1	05006232	Spacer, Bearing
14	1	05006233	Bearing, 1½"
15	2	05006234	Washer, Thrust
16	1	05006235	Bearing, Thrust
17	1	05006236	Housing <i>(Includes bearing #18 installed.)</i>
18	1	05006237	Bearing, Rear Housing
19	1	05006238	Link, Drive
20	1	05006239	Plate, Divider
21	1	05006240	Rotor Assembly
22	1	05006241	Manifold
23	1	05006242	Commutator Assembly
24	1	05006243	End Cover, Piston
25	1	05006244	Spring, Piston
26	1	05006245	End Cover <i>(Includes items 10, 11, 24 & 25.)</i>
27	1	--	I.D. Tag Assembly
28	7	05006246	Bolts, Assembly
29	1	05006247	Shaft

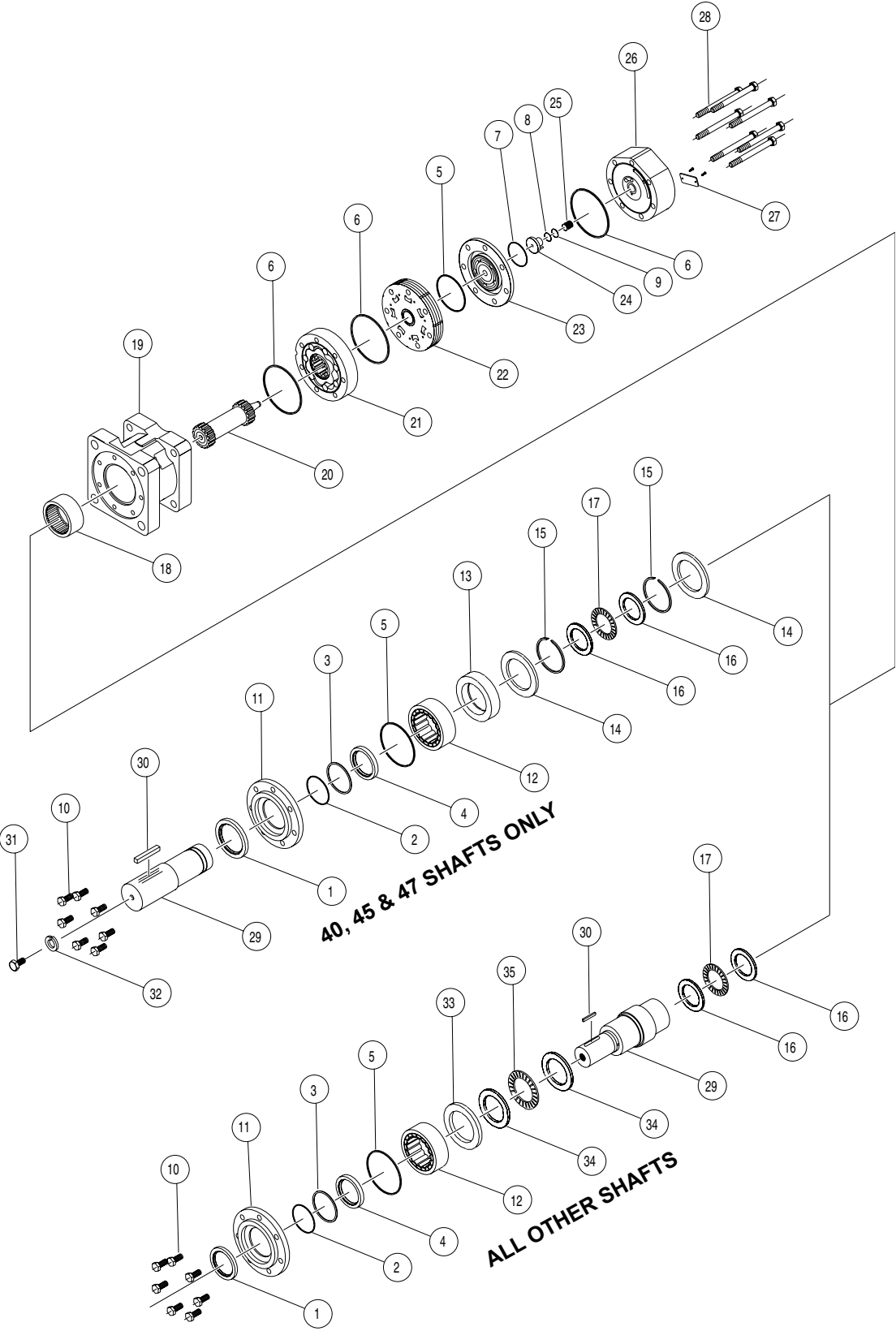
05006673 MOTOR, HYD, WHITE, 3.2CI, 4B, 1" EXT SHAFT, .875" ORB/SEAL SAVER



MOTOR ASSEMBLY PARTS LIST

Item	Part Number	Description
1	Seal Kit 05006679	Dust Seal
2		Split Wire Ring
3		Metal Backup Shim
4		High Pressure Seal
5		Metal Backup Shim
6		Teflon Backup Shim
7		Shaft Seal
8		Body Seals (3)
9		Seal Carrier
10		Thrust Washer
11	---	Thrust Bearing
12	---	Drive Link Kit
13	---	Wear Plate
14	---	Rotor Kit
15	---	Drive Link Pin Kit
16	---	Included in item #15 Drive Link Pin Kit
17	---	End Cover
18	---	Serial Number Plate
19	---	Bolt Set Kit
20	05006564	Housing Kit, 4-Hole, w/ 7/8" O-Ring
21	---	Cooling Plug
22	05006410	Shaft Kit 1" Straight Speed Sensor
23	---	Key Kit, 1" Straight

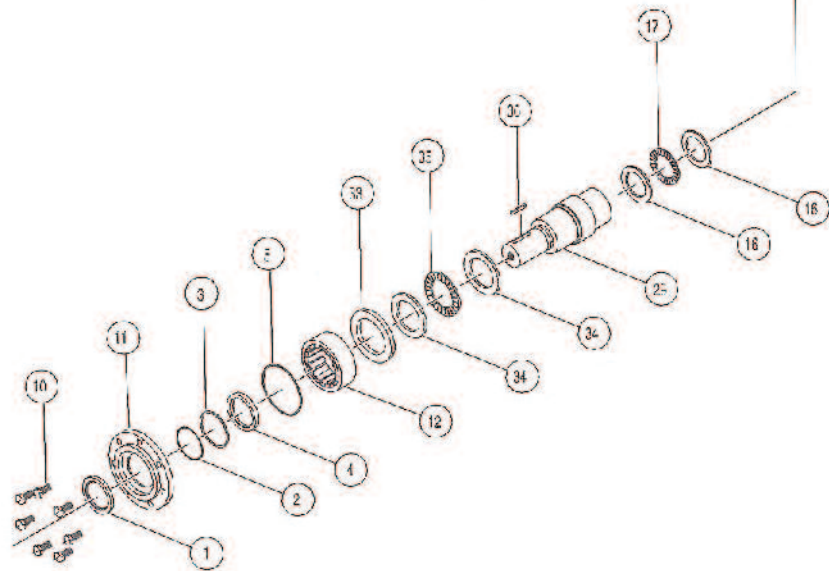
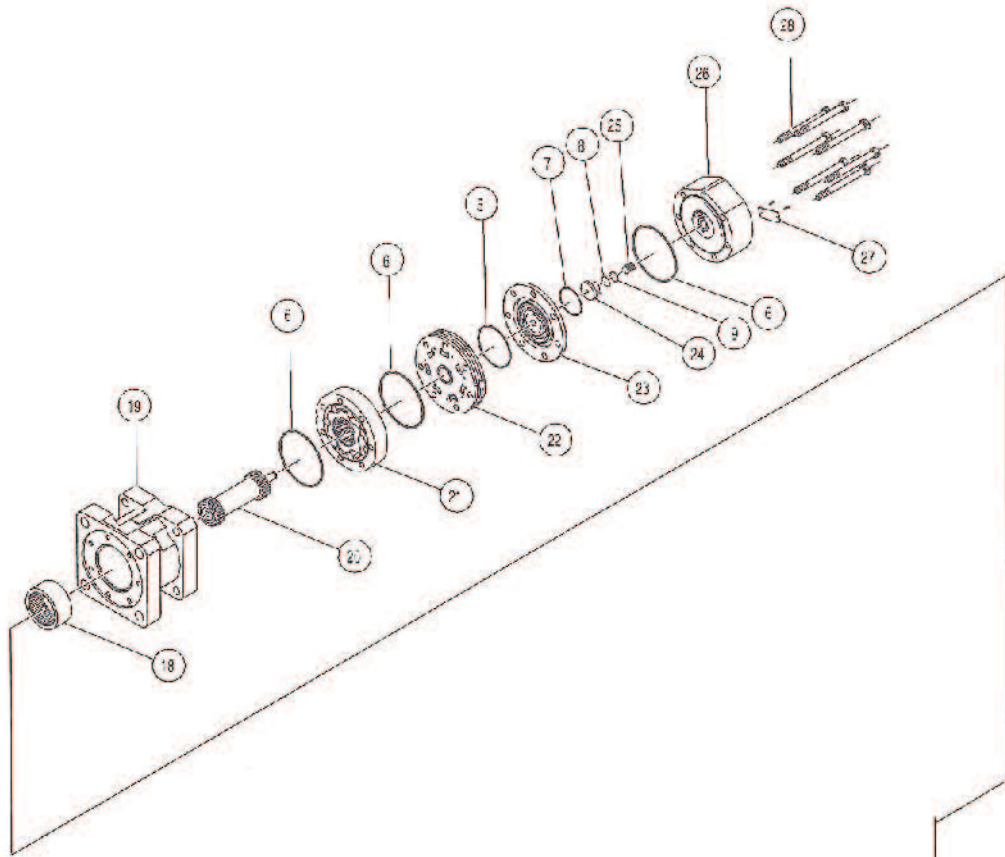
05006445 MOTOR, HYD, WHITE, 66CI, 4B, 14T, .0625" ORB, DT



MOTOR ASSEMBLY PARTS LIST

Item	Part Number	Description
1	Seal Kit 05006674	DUST SEAL
2		METAL BACKUP SHIM
3		TEFLON BACKUP SEAL
4		SAHFT SEAL
5		PILOT RING SEAL
6		BODY SEAL (3)
7		COMMUTATOR SEAL
8		TEFLON BACKUP SEAL
9		O-RING SEAL
10	<i>Call factory</i>	PILOT RING BOLTS
11	<i>Call factory</i>	PILOT RING
12	<i>Call factory</i>	FRONT HOUSING BEARING
13	<i>Call factory</i>	BEARING SPACER
14	<i>Call factory</i>	RETAINER WASHER
15	<i>Call factory</i>	SNAP RING
16	<i>Call factory</i>	THRUST WASHER
17	<i>Call factory</i>	THRUST BEARING
18	<i>Call factory</i>	REAR HOUSING BEARING
19	<i>Call factory</i>	HOUSING
20	<i>Call factory</i>	DRIVE LINK KIT
21	<i>Call factory</i>	STANDARD ROTOR KIT
22	<i>Call factory</i>	MANIFOLD
23	<i>Call factory</i>	COMMUTATOR ASSEMBLY
24	<i>Call factory</i>	ENDCOVER PISTON
25	<i>Call factory</i>	PISTON SPRING
26	<i>Call factory</i>	ENDCOVER KITS
28	<i>Call factory</i>	BOLT SET KIT
29	<i>Call factory</i>	SHAFT KIT
30	<i>Call factory</i>	KEY KIT
31	<i>Call factory</i>	BOLT KIT
32	<i>Call factory</i>	WASHER KIT
33	<i>Call factory</i>	SPACER
34	<i>Call factory</i>	FRONT THRUST WASHER
35	<i>Call factory</i>	FRONT THRUST BEARING

05006695 MOTOR, HYD, WHITE, 63.9CI, 4B 100PSI SENSOR, 14T SPLINE, .0625" ORB



MOTOR ASSEMBLY PARTS LIST

Item	Part Number	Description
1	Seal Kit 05006674	DUST SEAL
2		METAL BACKUP SHIM
3		TEFLON BACKUP SEAL
4		SAHFT SEAL
5		PILOT RING SEAL
6		BODY SEAL (3)
7		COMMUTATOR SEAL
8		TEFLON BACKUP SEAL
9		O-RING SEAL
10	<i>Call factory</i>	PILOT RING BOLTS
11	<i>Call factory</i>	PILOT RING
12	<i>Call factory</i>	FRONT HOUSING BEARING
13	05006232	BEARING SPACER
14	<i>Call factory</i>	RETAINER WASHER
15	<i>Call factory</i>	SNAP RING
16	<i>Call factory</i>	THRUST WASHER
17	<i>Call factory</i>	THRUST BEARING
18	<i>Call factory</i>	REAR HOUSING BEARING
19	<i>Call factory</i>	HOUSING
20	<i>Call factory</i>	DRIVE LINK KIT
21	<i>Call factory</i>	STANDARD ROTOR KIT
22	<i>Call factory</i>	MANIFOLD
23	<i>Call factory</i>	COMMUTATOR ASSEMBLY
24	<i>Call factory</i>	ENDCOVER PISTON
25	<i>Call factory</i>	PISTON SPRING
26	<i>Call factory</i>	ENDCOVER KITS
28	<i>Call factory</i>	BOLT SET KIT
29	05006714	SHAFT KIT
30	<i>Call factory</i>	KEY KIT
31	<i>Call factory</i>	BOLT KIT
32	<i>Call factory</i>	WASHER KIT
33	<i>Call factory</i>	SPACER
34	<i>Call factory</i>	FRONT THRUST WASHER
35	<i>Call factory</i>	FRONT THRUST BEARING

120 Pulse Speed Sensor Replacement Part Number: 05006629
Speed Sensor Flange: 05006718
Speed Sensor Magnet: 05006719

HOW TO ORDER PARTS

To order or inquire about replacement parts, please contact the **distributor** or **store** that the product was purchased through. To speed the information flow, please have the following information ready:

- Model Number
- Serial Number
- Part Number and/or description as per the parts manual
- Quantity needed

For further information about **Monroe Truck Equipment** replacement parts, please call 800-880-0109 and ask for **Snow & Ice Parts Sales**.

RETURN POLICY

Merchandise returned to **Monroe Truck Equipment** must have a Returned Goods Authorization (RGA) form filled out completely and signed by authorized personnel. To get your RGA form, call 800-880-0109. For whole goods, ask for **Snow & Ice Sales**. For replacement parts, ask for **Snow & Ice Parts Sales**. All returned items are subject to a 15% restocking fee and must be sent freight prepaid!

MONROE TRUCK EQUIPMENT, INC. WARRANTY SNOW & ICE CONTROL PRODUCTS

Monroe Truck Equipment, Inc. warrants to the original purchaser, that if any part of the product proves to be defective in workmanship or material within **ONE YEAR** of the original installation, and is returned to us within 30 days of the discovered defect, we will (at our option) repair or replace the defective part. This warranty does not apply to damage resulting from misuse, neglect, accident, improper installation, normal wear items or lack of maintenance. This warranty is exclusive and supersedes all other warranties, whether expressed or implied. **Monroe Truck Equipment, Inc.** neither assumes, nor authorizes anyone to assume for it, any other obligation or liability in connection with this warranty and will not be liable for consequential damages.

All engines, pumps, motors, cylinders and valves are warranted by their manufacturer and not by **Monroe Truck Equipment, Inc.**. The manufacturer's warranty will apply to these parts. Electrical and hydraulic components are not to be disassembled without the express written permission of Monroe Truck Equipment. Use of replacement parts other than original equipment voids this warranty.

All defective parts returned must be accompanied by the model number, serial number, date installed, date of defect, description of defect, and the name of the distributor from whom it was purchased. All warranty claims must have prior written approval from **Monroe Truck Equipment, Inc.**

Please return the warranty registration card that accompanies this manual to confirm receipt of this parts catalog and acknowledge the information contained within. Failure to return the attached card may result in a voided warranty.



**1051 West 7th Street
 Monroe, WI 53566
 608-328-8127 ~ Fax: 608-328-4278**

Warranty Policy Uninstalled Parts and Equipment Provided by Monroe Truck Equipment

Monroe Truck Equipment will provide the following limited warranty for a period of one year to the original purchaser of all uninstalled goods provided by Monroe Truck Equipment:

LIMITED WARRANTY: All goods provided by Monroe Truck Equipment (MTE) will be free from defects in material and workmanship for a period of one year from the date of purchase by the original purchaser. This limited warranty shall be the sole and exclusive remedy for any such product found to be defective. This limited warranty supercedes all previous warranties and is exclusive and in lieu of all other warranties, whether expressed or implied.

This limited warranty applies only to parts or accessories manufactured by MTE and/or provided by same. Except with respect to title, this limited warranty does not pertain to parts or accessories not manufactured and/or provided by MTE, regardless of whether such parts or accessories were selected and/or recommended by MTE. MTE will, as a service to the buyer, pass on any warranties received from the original manufacturer of MTE provided parts and/or accessories.

MTE will not under any circumstances be liable for any incidental or consequential damages whether in tort, contract, or otherwise, for any bodily injury, death, property damage, loss of use, or loss of income resulting from or in any way arising out of any goods provided by MTE, or their sale, use, or manufacture.

Any warranty claim deemed to be arising from the result of misuse, abuse, neglect, accident, improper installation, lack of maintenance, act of war (whether declared or otherwise), or act of God will be denied. Any repair or modification by the buyer or any third party, without the prior written consent of MTE, will void any possible warranty compensation. Any damage deemed to be the result of abnormal operation will not be compensated by this warranty.

Normal or special maintenance items such as fuels, fluids, tires/belts, hoses, filters, air cleaners, light bulbs, and any other items subject to normal wear and tear that are supplied in connection with goods provided by MTE are not allowed under this warranty.

All engines, pumps, cylinders, valves, and motors are warranted by their manufacturer and not by Monroe Truck Equipment. The manufacturer's warranty will apply to these parts. Electrical and hydraulic components are not to be disassembled without the express written consent of MTE. Any disassembly of MTE provided components without prior authorization will void the applicable warranty.

Monroe Truck Equipment shall be the sole and final determining authority as it applies to the administration of this warranty policy. Purchaser acknowledges receipt of Monroe Truck Equipment Warranty Policy and agrees to be bound by same.



GLOBAL SOLUTIONS
 ARMORED VEHICLES ~ SPORT TRUCK CONVERSIONS
 MUNICIPAL SNOW & ICE CONTROL ~ FIRE APPARATUS
 PICKUP TRUCK ACCESSORIES ~ TRUCK EQUIPMENT/MODIFICATIONS





**1051 West 7th Street
Monroe, WI 53566
608-328-8127 ~ Fax: 608-328-4278**

Any and all warranty claims must be forwarded to MTE within 10 days of defect discovery. A copy of the original Monroe Truck Equipment invoice as well as the manufacturer's model number, serial number, and date of installation must accompany all correspondence regarding said claims. MTE will, at their option, choose whether to repair or replace the defective part unless otherwise specified by the original manufacturer of said part.

Procedures for Warranty Claims Notification

For submission of any warranty claim please contact Monroe Truck Equipment – Warranty Department at 800-356-8134

The following documentation will be needed when you call for initial warranty authorization:

1. A copy of the original MTE invoice.
2. Make, Model, and VIN or Serial Number of the equipment involved.
3. Part number and serial number of the part in question.
4. A complete description of the problem.

The following must accompany any claims submitted to Monroe Truck Equipment:

1. Documented photographs of any physical damage.
2. Inspection notes by MTE personnel or MTE authorized 3rd party.
3. Authorization number issued by Monroe Truck Equipment – Warranty Department.

Defective parts must be returned to Monroe Truck Equipment (freight prepaid) within 30 days of issuance of Authorization Number.

Monroe Truck Equipment reserves the right to void any warranty for failure to comply with Monroe Truck Equipment Warranty Policy.

This policy is effective October 11, 2012

