



MSPV with Auger

Installation and Parts Manual



MONROE TRUCK EQUIPMENT
1051 W. 7th Street
Monroe, WI 53566
Phone: 608-328-8127
Fax: 608-329-8488

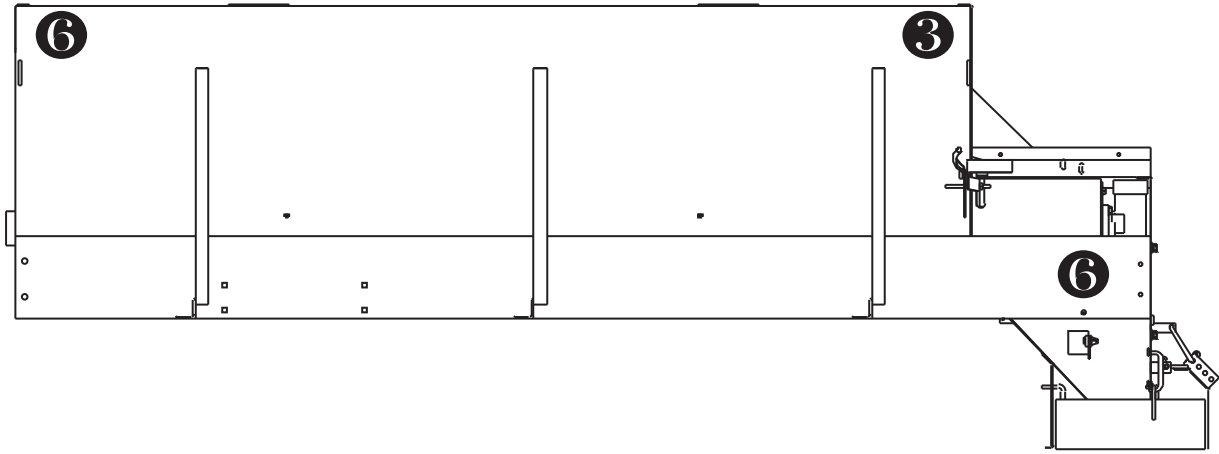
05050916-4
10/29/2013

TABLE OF CONTENTS

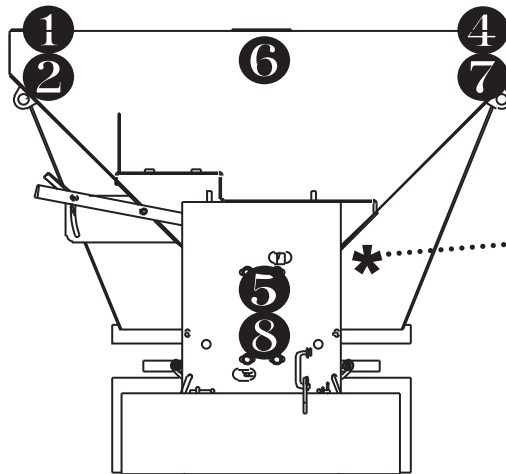
SAFETY INSTRUCTIONS	Page 2-4
MAINTENANCE INSTRUCTIONS	Page 5
INSTALLATION INSTRUCTIONS	Page 6-7
OPERATING INSTRUCTIONS	Page 8
LUBRICATION CHART	Page 8
HYDRAULIC SCHEMATICS	Page 9
HYDRAULIC TROUBLESHOOTING CHART	Page 10
GENERAL INFORMATION	Page 11
TORQUE CHART	Page 11
REPLACEMENT PARTS	Page 12-35
HOPPER WELDMENT (Page 12-13)	
AUGER WELDMENT (Page 12-13)	
MOTOR KIT & DRIVE KIT (Page 14)	
DOOR KIT (Page 14)	
INVERTED V KIT (Page 15)	
SPINNER ASSEMBLIES (Page 16-23)	
SPINNER ATTACHMENT GROUP (Page 24)	
SPINNER DISC ASSEMBLY (Page 25)	
EXTENTION KITS (Page 26-28)	
TOP GRATE WELDMENTS (Page 29)	
MOUNTING KITS (Page 30)	
DECAL KIT (Page 31)	
HOW TO ORDER PARTS	Page 36
RETURN POLICY	Page 36
WARRANTY INFORMATION	Page 37

SAFETY DECAL LOCATIONS

DRIVER SIDE



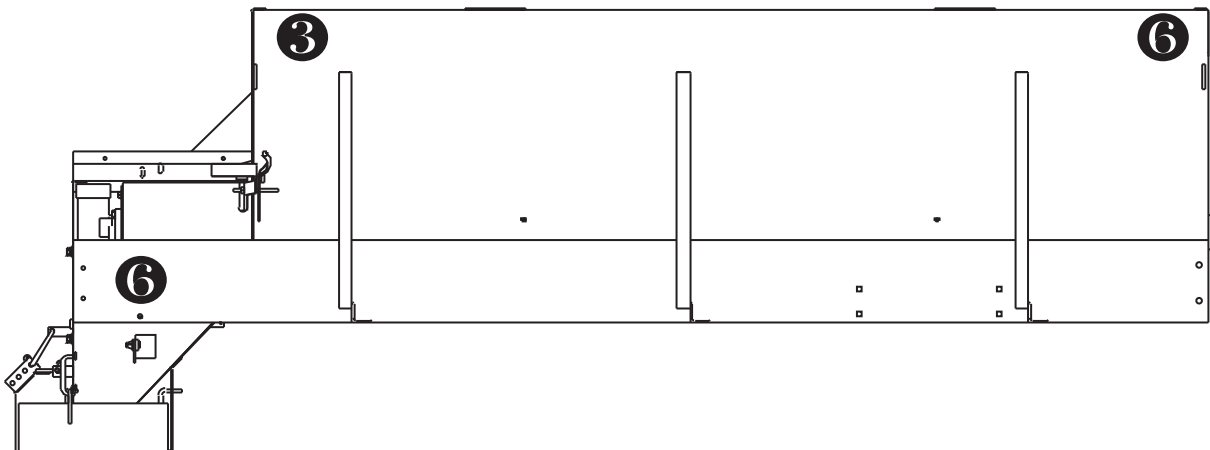
REAR VIEW



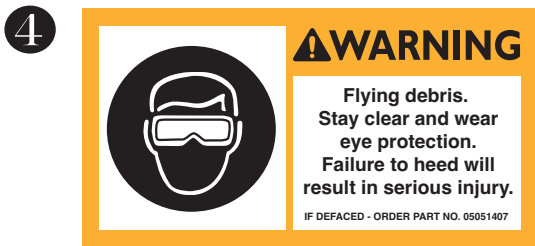
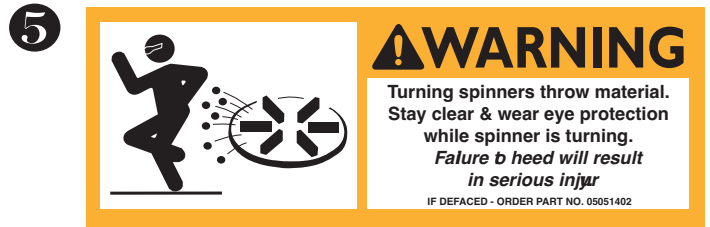
Denotes the location of the parts manual, canister and canister bracket. Reorder with the following part numbers:

- | | |
|----------|------------------|
| 05050916 | Parts Manual |
| 05052330 | Canister |
| 05052331 | Canister Bracket |

PASSENGER SIDE



SAFETY DECALS



Should you ever need replacement decals or parts/maintenance manuals, simply contact MTE and we will supply you with them FREE OF CHARGE. See page 31 for safety decal replacement part numbers.

SAFETY DECAL SIGNAL WORDS



DANGER (*Red*) indicates an imminently hazardous situation which, if not avoided, will result in death or serious injury.



WARNING (*Orange*) indicates a potentially hazardous situation which, if not avoided, could result in death or serious injury.



CAUTION (*Yellow*) indicates a potentially hazardous situation which, if not avoided, may result in minor or moderate injury.



CAUTION (*Yellow*) used without the safety risk alert symbol indicates a potentially hazardous situation which, if not avoided, may result in property damage.

SAFETY INSTRUCTIONS

- Read all installation, safety and maintenance instructions completely before operating this equipment.
- Keep all personnel clear of moving parts while pickup v-box is being operated.
- Wear close fitting clothing and safety equipment appropriate to the job.
- Read and understand the following warning, danger and caution decals attached to this spreader. *(For locations of decals, see page 2-3.)*
- Do not operate a spreader in need of maintenance! Repair immediately!
- Top grates ***MUST*** be installed under top grate hold down gussets.
- While operating this equipment, use common sense, use caution, be alert and be safety-conscious.
- Turn fuel shut off valve to off position when equipment is not in use.



! DANGER

AVOID HIGH-PRESSURE FLUIDS

Escaping fluid under pressure can penetrate the skin causing serious injury.

Avoid the hazard by relieving pressure before disconnecting hydraulic or other lines. Tighten all connections before applying pressure.

Search for leaks with a piece of cardboard. Protect hands and body from high pressure fluids.

If an accident occurs, see a doctor immediately. Any fluid injected into the skin must be surgically removed within a few hours or gangrene may result.

MAINTENANCE INSTRUCTIONS

In Season:

- Check bearings, all wear items, and loose bolts and nuts daily, and re-torque before use. (Failure to inspect equipment on a daily basis may seriously affect safety and/or efficiency.)
- Check all hydraulic fittings for tightness and/or damage on a regular basis.
- Lubricate all grease fittings. Refer to lubrication chart on page 8.
- Due to the nature of use and environment this equipment is operating in, damage and wear may occur at any time. Therefore, **Monroe Truck Equipment** recommends the end user establish, and follow, a daily inspection routine before using this equipment.

Off Season: *(If Applicable)*

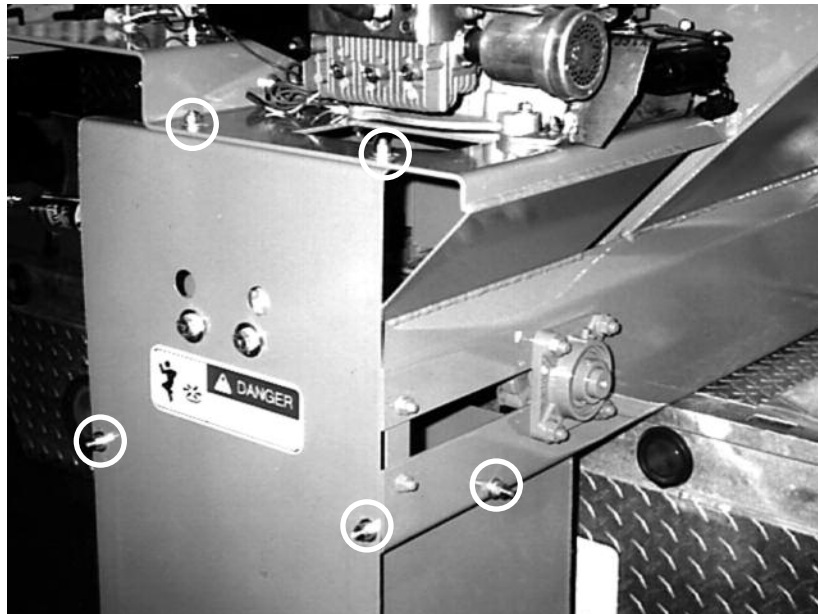
- Use care when disconnecting hydraulic lines to assure that no dirt or foreign object enters the hydraulic system. Use caps to cover hydraulic hose fittings and insert plugs into hydraulic ports.
- Thoroughly clean, lubricate and touch up paint as needed prior to storage. NOTE: Do not paint over safety decals.
- Check mounting bolts for wear and/or damaged threads and replace before remounting.

INSTALLATION INSTRUCTIONS

Installing Spinner Assembly to Spreader:

- Raise spreader to allow ground clearance for spinner assembly installation. Slide spinner assembly into the rear slots of the longmembers. Attach spinner to the longmembers using (2) $\frac{3}{8}$ " x $8\frac{1}{2}$ " L-bolts, (4) $\frac{3}{8}$ " flat washers, (2) $\frac{3}{8}$ " lock washers and (4) $\frac{3}{8}$ " nuts. Bolt top portion of spinner back plate to the engine mounting plate using (2) $\frac{3}{8}$ " x 1" bolts, (4) $\frac{3}{8}$ " flat washers, (2) $\frac{3}{8}$ " lock washers and (2) $\frac{3}{8}$ " nuts. Tighten all (6) nuts at this time. *(All mounting hardware is located in bag inside spreader box.)*
- Install roller chain between gearbox sprocket and spinner sprocket. Align sprockets by loosening allen screw in gearbox sprocket, and adjusting vertically as needed. Adjust chain tightness by loosening (4) bolts of spinner shaft mount and moving for desired chain tension. Retighten bolts and allen screw. *(Make sure spinner shaft is straight up and down before retightening bolts.)*

Spinner to spreader fasten points:



INSTALLATION INSTRUCTIONS

Installing the Pickup V-Box Spreader Into Truck

Using the *Optional* 00057595 Mounting Kit:

(See page 30 for Replacement Parts)

- Lift spreader (with spinner attached) onto bed of truck and center. Leave 1" gap between rear bumper and spinner.
- Attach (4) eyebolts in corners of truck sides. Fasten each with (1) $\frac{3}{8}$ " lock nut and (2) $\frac{3}{8}$ " flat washers.
- Attach each of (4) chains to mounting tabs with (1) $\frac{3}{8}$ " x $1\frac{1}{2}$ " bolt, (1) $\frac{3}{8}$ " flat washer, (1) $\frac{3}{8}$ " lock washer and (1) $\frac{3}{8}$ " nut.
- Hook (4) turnbuckles onto eyebolts and hook other end to chains that are bolted to spreader tabs. Tighten turnbuckles so spreader is centered and immovable.

OPERATING INSTRUCTIONS

Table Symbols: L.B. = Left Baffle; R.B. = Right Baffle; B.B. = Back Baffle

Position of Baffle(s)	Result
1. L.B. in lowest position and R.B. and B.B. in highest position.	1. Immediate baffling effect to the left. With the effect tapering out to 11 ft. left of center pattern about 10 ft. behind the spinner. The pattern to the right and directly behind the spreader will continue as normal.
2. R.B. in lowest position and B.B. and L.B. in highest position.	2. Same as #1 but has the opposite effect on the right side.
3. R.B. and L.B. in lowest position and B.B. in highest position.	3. Immediate baffling effect is noticed on the right and left side with a gradual increase in pattern width proportional to the distance behind the spreader.
4. R.B. and B.B. in lowest position and L.B. in highest position.	4. Pattern: 2 ft. right of center and 10 - 15 ft. left of center.
5. B.B. and L.B. in lowest position and R.B. in highest position.	5. Pattern: 1 - 2 ft. left of center and 1 - 15 ft. right of center.
NOTE: For immediate baffling to the right or left #4 and #5 work the best.	
6. R.B. and L.B. in highest position and B.B. in lowest position.	6. Material will be dropped directly behind spreader and to both sides equally. There will be very little decrease in effective spread width.

LUBRICATION CHART

LUBRICATION

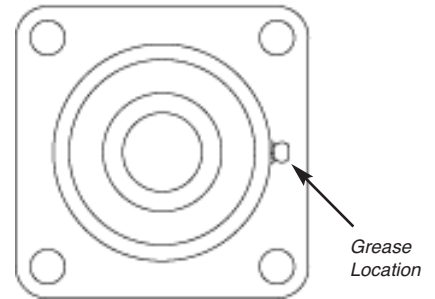
All bearing units are factory prelubricated and, therefore, do not require supplemental grease before service life begins. Relubrication, when administered correctly, can increase the life of a bearing substantially. We recommend the following general guidelines to maximize your bearing life:

RPM	Temperature	Environmental Condition	Interval
100	32°F-120°F	Clean	6-12 months
500	32°F-150°F	Clean	2-6 months
1,000	32°F-210°F	Clean	2 wks to 2 months
1,500	Over 210°F	Clean	Daily to weekly
Any	32°F-150°F	Dirty	Weekly to monthly
Any	Over 150°F	Dirty	Daily to 2 wks
Any	Any Temp.	Very Dirty	Daily to weekly
Any	Any Temp.	Extremely Dirty	Daily to weekly

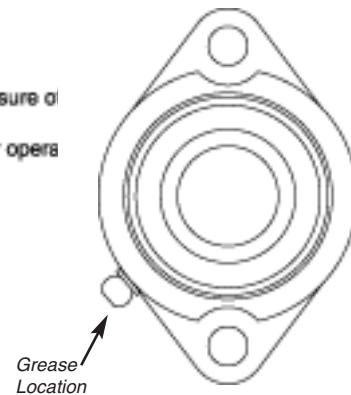
NOTE:

Over lubrication is a major cause of bearing failures. Please relubricate conservatively when unsure of bearing requirements. When selecting a bearing lubricant, your dealer suggest any lithium-based NLGI #2 grease. For operation higher than 210°F, please consult your dealer.

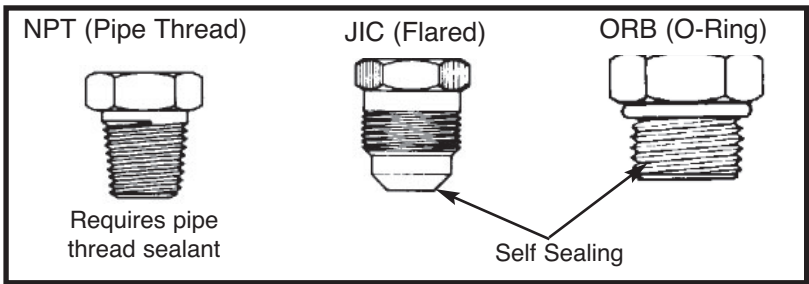
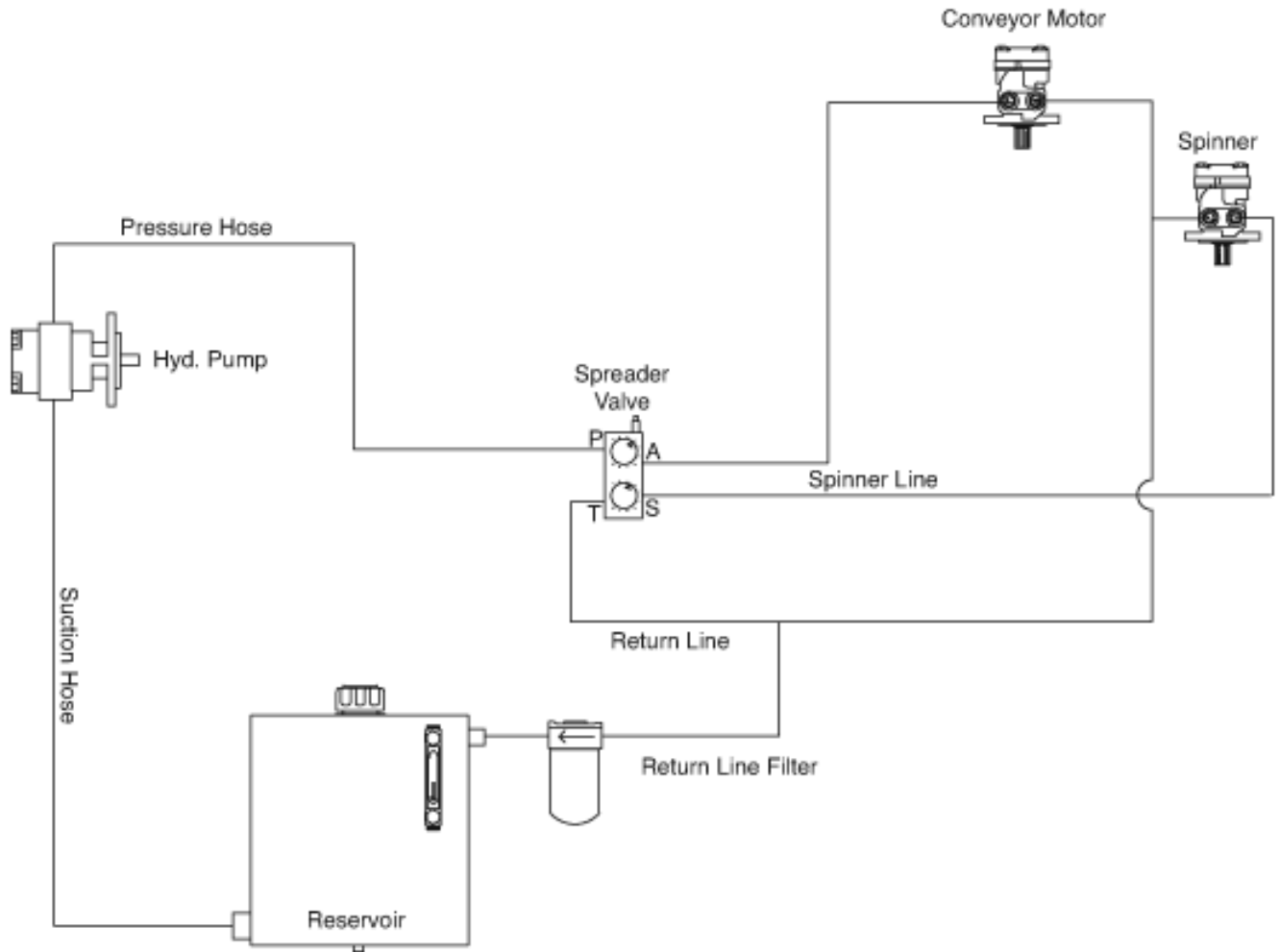
**BEARING, 1.25" 4-BOLT FLANGE
PN: 05030029**



**BEARING, 1" 2-BOLT FLANGE
PN: 05030023**



HYDRAULIC SCHEMATICS



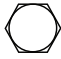


HYDRAULIC TROUBLE SHOOTING CHART

<p>CONDITION 1 Pump cavitation recognized by excessive noise.</p> <p>CAUSE</p> <ul style="list-style-type: none"> • Air entering system through suction lines. • Suction line kinked, twisted or too long. • Inadequate size suction line. • Oil too heavy. • Excessive pump speed. Normal pump speed 1200 to 1500 RPM. <p>CORRECTION</p> <ul style="list-style-type: none"> • Check line from reservoir for possible leaks. • Install suction line as short and straight as possible. • Increase suction line size. • Drain and replace with a low viscosity non-detergent oil. • Pump capacity is 16 GPM at 1000 RPM. Decrease PTO speed accordingly. 	<p>CONDITION 2 Erratic operation of conveyor and/or spinner.</p> <p>CAUSE</p> <ul style="list-style-type: none"> • Low oil. • Worn or defective motor. • Dirty, worn or defective flow control valve. • Plugged filter. • Relief valve setting too low. • Pump cavitation. • Air vent on reservoir tank is blocked. <p>CORRECTION</p> <ul style="list-style-type: none"> • Fill reservoir to a $\frac{3}{4}$ full level. • Repair or replace motor. • Clean, repair or replace flow control. • Replace filter element and clean filter. • Adjust relief valve for 1500 PSI. • Refer to pump section. • Clean or replace vent cap to admit atmospheric pressure to inside of the tank.
<p>CONDITION 3 Slow operation of conveyor and/or spinner.</p> <p>CAUSE</p> <ul style="list-style-type: none"> • Worn or defective pump. • Worn or defective motor. • Pump cavitation. • Insufficient pump speed. <p>CORRECTION</p> <ul style="list-style-type: none"> • Repair or replace pump. • Repair or replace motor. • Refer to pump section. • Pump capacity is 16 GPM at 1000 RPM. Increase PTO accordingly. 	<p>CONDITION 4 Conveyor and/or spinner will not operate.</p> <p>CAUSE</p> <ul style="list-style-type: none"> • Quick disconnects are dirty, damaged, or improperly connected. • Hose connections wrong. • Foreign material in valve compensator. <p>CORRECTION</p> <ul style="list-style-type: none"> • Clean or replace and properly connect. • Refer to illustration. • Remove compensator and clean.

GENERAL INFORMATION

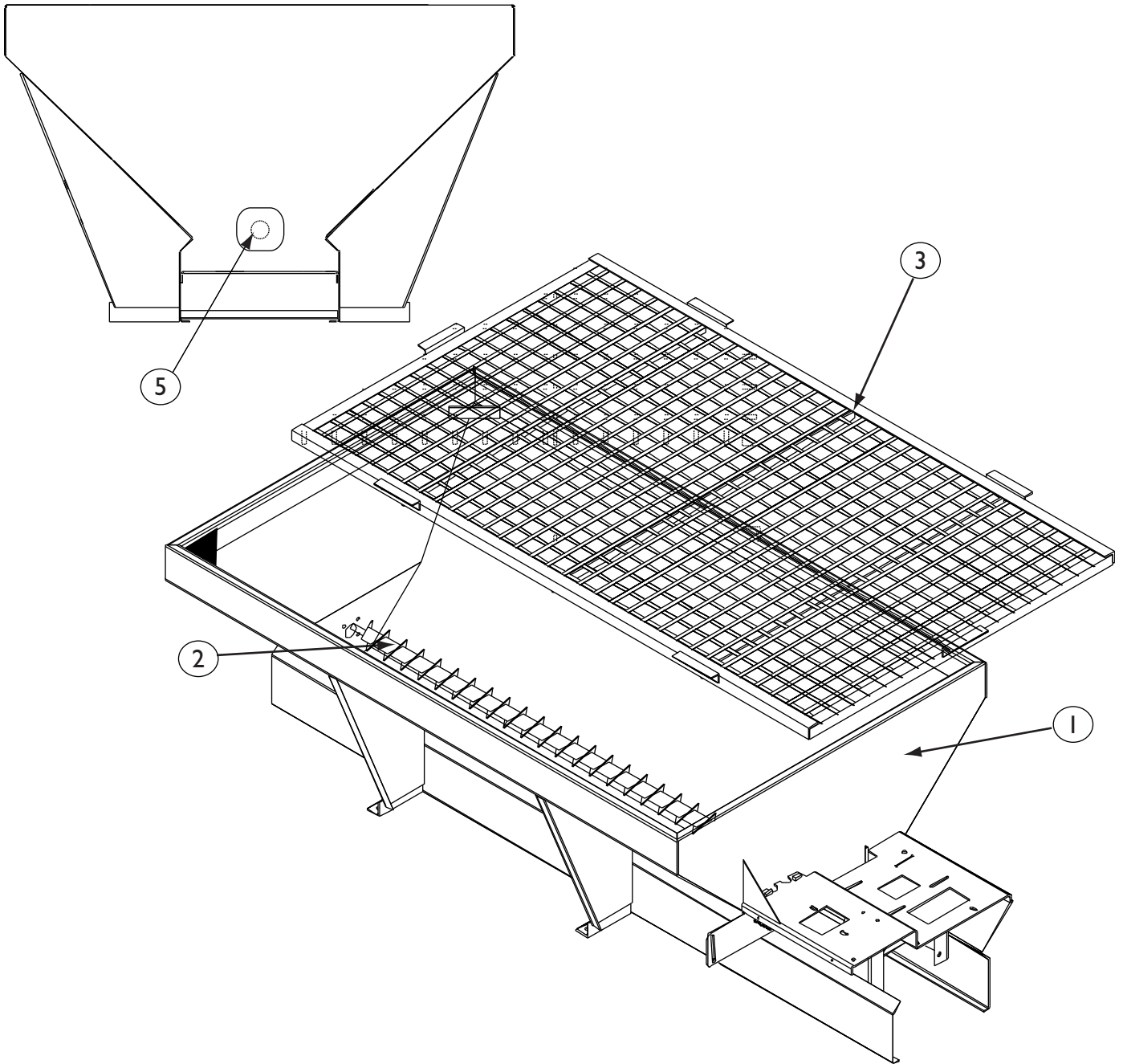
- Location descriptions are noted in direction of travel. (i.e. front, rear, left and right.)
- Delivery of replacement parts is subject to our sales delivery terms.
- Use only **Monroe Truck Equipment** O.E.M. replacement parts. Failure to do so will void warranty.
- Replacement parts listed in this manual reflect our most common PV Spreader items. If you do not find the part you require, please call your distributor.
- **Monroe Truck Equipment** reserves the right to make revisions or alterations to this parts manual.

TORQUE CHART

SIZE	 GRADE 2	 GRADE 5	 GRADE 8
1/4-20	50 IN-LBS	75 IN-LBS	9 FT-LBS
3/8-16	15 FT-LBS	23 FT-LBS	35 FT-LBS
1/2-13	35 FT-LBS	55 FT-LBS	80 FT-LBS
5/8-11	75 FT-LBS	110 FT-LBS	170 FT-LBS
3/4-10	130 FT-LBS	200 FT-LBS	280 FT-LBS
1-8	190 FT-LBS	480 FT-LBS	680 FT-LBS
1 1/4-7	380 FT-LBS	840 FT-LBS	1,360 FT-LBS

MSPV Spreader w/Auger

Front View



MSPV W/AUGER PARTS LIST

ITEM	QTY	PART #	DESCRIPTION
1	1	00038099-A	Hopper Weldment, MSPV, 84-32-50, MS
	1	00038099-B	Hopper Weldment, MSPV, 84-32-50, 304 SST
	1	00038099-C	Hopper Weldment, MSPV, 84-32-50, 409 SST
	1	00031093-A	Hopper Weldment, MSPV, 96-32-50, MS
	1	00031093-B	Hopper Weldment, MSPV, 96-32-50, 304 SST
	1	00031093-C	Hopper Weldment, MSPV, 96-32-50, 409 SST
	1	00050023-A	Hopper Weldment, MSPV, 108-32-50, MS
	1	00050023-B	Hopper Weldment, MSPV, 108-32-50, 304 SST
	1	00050023-C	Hopper Weldment, MSPV, 108-32-50, 409 SST
	1	00082829-A	Hopper Weldment, MSPV/MD, 108-44-50, MS
	1	00082829-B	Hopper Weldment, MSPV/MD, 108-44-50, 304 SST
	1	00050024-A	Hopper Weldment, MSPV, 120-32-50, MS
	1	00050024-B	Hopper Weldment, MSPV, 120-32-50, 304 SST
	1	00050024-C	Hopper Weldment, MSPV, 120-32-50, 409 SST
	2	1	00048388
1		00034538	Auger Weldment, 4" Pitch-6" OD -8'
1		00048391	Auger Weldment, 4" Pitch-6" OD -9'
1		00050025	Auger Weldment, 4" Pitch-6" OD -10'
3	1	(See page 29)	Top Grate Weldment*
4	1	(See page 31)	Decal Kit, MSPV, Auger, MS
	1		Decal Kit, MSPV, Auger, 304 SST
5	1	(See page 14)	Motor Kit, MSPV, Auger, MS
	1		Motor Kit, MSPV, Auger, 304 SST
6	1	(See page 14)	Drive Kit, MSPV, Auger, MS
	1		Drive Kit, MSPV, Auger, 304 SST
	1		Drive Kit, MSPV, Auger, 409 SST
8	1	(See page 15)	Inverted V Kit, MSPV, 7' & 8', 48", MS
	1		Inverted V Kit, MSPV, 7' & 8', 48", 304 SST
			Inverted V Kit, MSPV, 9' & 10', 72", MS
			Inverted V Kit, MSPV, 9' & 10', 72", 304 SST

** For safety, the Top Grate **MUST** be installed underneath the hold down gussets welded to the front of the hopper.*

MOTOR KIT, MSPV, AUGER

ITEM	QTY	PART #	DESCRIPTION
1	1	05006556	Motor, Hydraulic White, 24 CID, 1" Shaft (See page 32-33)
2	4	05010644	Bolt, 3/8" - 16 x 1 1/4", G8, HHCS, Zinc
	4	05016049	Bolt, 3/8" - 16 x 1 1/4", HHCS, SST
3	4	05021365	Washer, 3/8", Lock, Zinc
	4	05021392	Washer, 3/8", Lock, SST

00091654-A/B MOTOR KIT, MSPV, AUGER W/ SPEED SENSOR

ITEM	QTY	PART #	DESCRIPTION
1	1	05006688	Motor, Hyd White, 24CID, 1" Shaft, Snsr
2	4	05010644	Bolt, .375-16 x 1.25, G8, HHCS, Zinc
	4	05016049	Bolt, .375-16 x 1.25, HHCS, SST
3	4	05021365	Washer, .375-16, Lock, Zinc
	4	05021392	Washer, .375-16, Lock, SST
4	1	00153769-A	Shim Plate, Motor, MSPV, Aug, Sp Snsr, MS
	1	00153769-B	Shim Plate, Motor, MPSV, Aug, Sp Snsr, SST

DRIVE KIT, AUGER

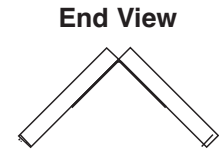
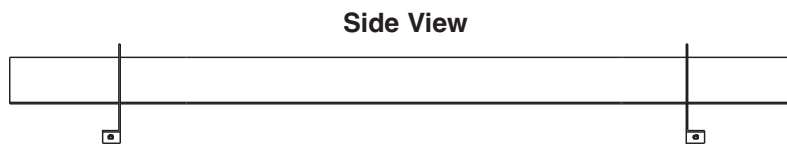
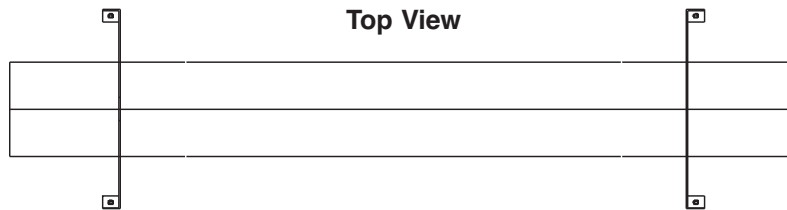
ITEM	QTY	PART #	DESCRIPTION
1	1	05030029	Bearing, 1 1/4", 4-Bolt Flange (See page 8)
2	1	00034597-A	Bearing Bracket, MS
	1	00034597-B	Bearing Bracket, 304 SST
	1	00034597-C	Bearing Bracket, 409 SST
3	8	05010690	Bolt, 1/2" - 13 x 1 1/4", G8, HHCS, Zinc
	8	05016045	Bolt, 1/2" - 13 x 1 1/4", HHCS, SST
4	8	05020609	Nut, 1/2" - 13, Spin Lock, Zinc
	8	05020853	Nut, 1/2" - 13, Spin Lock, SST
5	8	05021309	Washer, 1/2", Flat, Zinc
	8	05021391	Washer, 1/2", Flat, SST
6	1	05037660	Coupling, 1/8" NPT
7	1	05051481	Adapter, Grease Line, 1/4" - 28 UNF
8	2	05038251	Fitting, 1/8" Grease Line, 1/8"
9	1	05038250	Hose, 1/8" ID, Black, Grease Line

INVERTED V KIT, 7' & 8'

ITEM	QTY	PART #	DESCRIPTION
1	1	00057256-A	Inverted V Weldment, MSPV, 7', 8', MS <i>(Includes hardware)</i>
	1	00057256-B	Inverted V Weldment, MSPV, 7', 8', 304 <i>(Includes hardware)</i>
2	4	05010642	Bolt, $\frac{3}{8}$ - 16 x $\frac{7}{8}$, G8, HHCS, Zinc
	4	05016050	Bolt, $\frac{3}{8}$ - 16 x $\frac{7}{8}$, HHCS, SST
3	4	05020607	Nut, $\frac{3}{8}$ - 16, G2, Spinlock, Zinc
	4	05020840	Nut, $\frac{3}{8}$ - 16, G2, Spinlock, SST

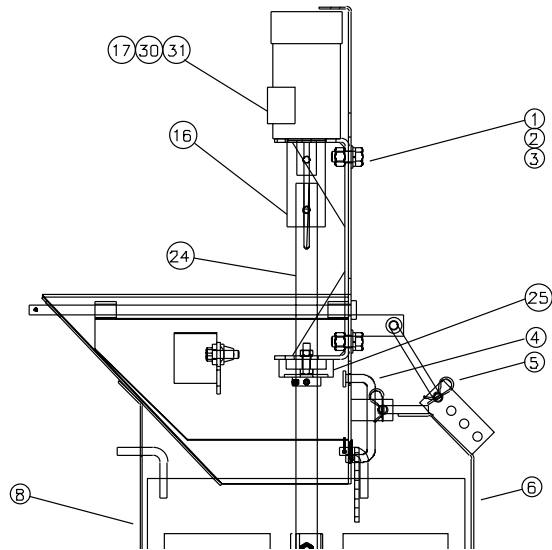
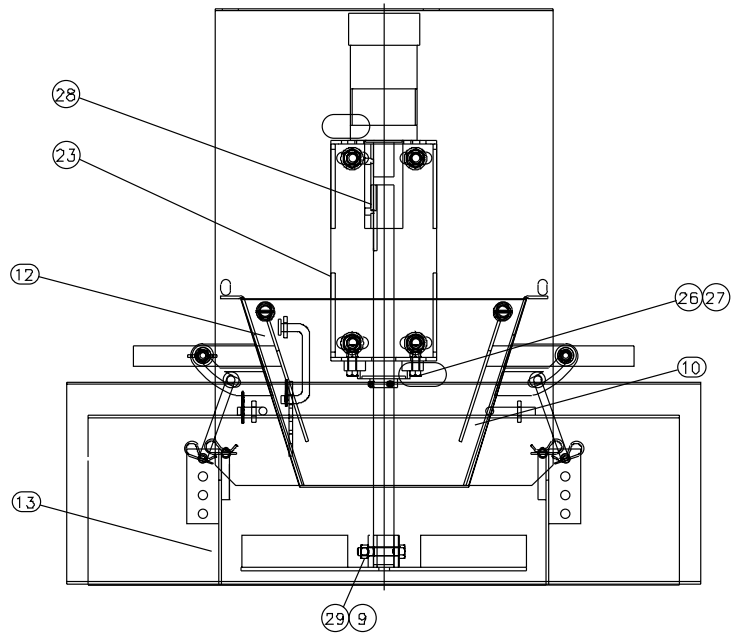
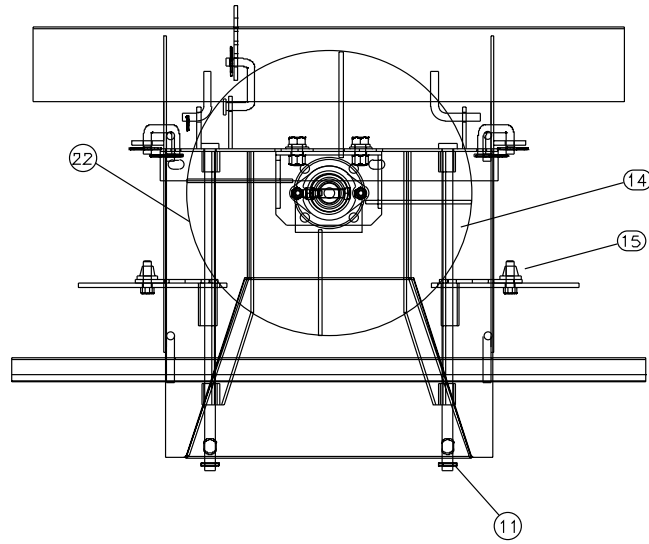
INVERTED V KIT, 9' & 10'

ITEM	QTY	PART #	DESCRIPTION
1	1	00056287-A	Inverted V Weldment, MSPV, 9', 10', MS <i>(Includes hardware)</i>
	1	00056287-B	Inverted V Weldment, MSPV, 9', 10', 304 <i>(Includes hardware)</i>
2	4	05010642	Bolt, $\frac{3}{8}$ - 16 x $\frac{7}{8}$, G8, HHCS, Zinc
	4	05016050	Bolt, $\frac{3}{8}$ - 16 x $\frac{7}{8}$, HHCS, SST
3	4	05020607	Nut, $\frac{3}{8}$ - 16, G2, Spinlock, Zinc
	4	05020840	Nut, $\frac{3}{8}$ - 16, G2, Spinlock, SST



*Shown is the 9' & 10'

Spinner Assembly, Hydraulic



00042731-A SPINNER ASSEMBLY, HYDRAULIC, MS

ITEM	QTY	PART #	DESCRIPTION
1	4	05010689	Bolt, ½ - 13 x 1, HHCS, MS
2	4	05021309	Washer, ½, Flat, MS
3	4	05021367	Washer, ½, Lock, MS
4	3	05051225	Arm, Adjuster Link for New-Style
5	6	05022045	Pin, .0725 x 1.562 x ¾, Hair
6	1	00057308-A	Deflector Weldment, Rear, MS
7	1	00057360-A	Deflector Weldment, LH, MS
8	1	00057582-A	Frame Weldment, Spinner, MS
9	1	05020898	Nut, ¾ - 16, Top Lock, C&W (Not Shown)
10	1	00057348-A	Diverter Weldment, LH, MS
11	2	05022072	Pin, ½ x ¾, Roll, Zinc
12	1	00057347-A	Diverter Weldment, RH, MS
13	1	00057359-A	Deflector Weldment, RH, MS (Not Shown)
14	2	05050122	Pin, Pivot, ½ DIA x 15¼, Plated
15	2	05050574	Knob, Plastic Star Grip, ¾ - 16
16	1	05051201	Coupler, Shaft, 1" x 4"
17	1	05006673	Motor, Hydraulic, White, 3.2 CID, 1" Shaft (See pages 34-35)
18	1	00057257-A	Spinner Disc Weldment, MS (Shown in Dotted Line)
	1	05050064	Spinner Disc, Poly (Shown in Dotted Line) (See page 25)
19	1	00057275-A	Bracket Weldment, Bearing Holder, MS
20	1	00070495	Spinner Shaft Modification
21	1	05030023	Bearing, 1" Bore, 2-Bolt (Not Shown) (See page 8)
22	2	05010619	Bolt, ⅝ - 18 x 1¼, GR8, HHCS, Zinc (Not Shown)
23	2	05020265	Nut, ⅝ - 18, Hex, Zinc (Not Shown)
24	2	05050121	Key, ¼ x ¼ x 1½" (Not Shown)
25	1	05010648	Bolt, ¾ - 16 x 2¼, GR8, HHCS, Zinc (Not Shown)
26	4	05010642	Bolt, ¾ - 16 x ¾, GR8, HHCS, Zinc (Not Shown)
27	4	05021365	Washer, ¾, Lock, Zinc (Not Shown)
28	1	00012698	Attachment Kit, Spinner, Hydraulic Drive (Not shown, see page 24)

00042731-B SPINNER ASSEMBLY, HYDRAULIC, 304 STAINLESS STEEL

ITEM	QTY	PART #	DESCRIPTION
1	4	05016047	Bolt, ½ - 13 x 1, HHCS, SST
2	4	05021391	Washer, ½, Flat, SST
3	4	05021396	Washer, ½, Lock, SST
4	3	05051225	Arm, Adjuster Link for New-Style
5	6	05022045	Pin, .0725 x 1.562 x ¾, Hair
6	1	00057308-B	Deflector Weldment, Rear, 304 SST
7	1	00057360-B	Deflector Weldment, LH, 304 SST
8	1	00057582-B	Frame Weldment, Spinner, 304 SST
9	1	05020891	Nut, ¾ - 16, Nylon Lock, SST (Not Shown)
10	1	00057348-B	Diverter Weldment, LH, 304 SST
11	2	05022072	Pin, ½ x ¾, Roll, Zinc
12	1	00057347-B	Diverter Weldment, RH, 304 SST
13	1	00057359-B	Deflector Weldment, RH, 304 SST (Not Shown)
14	2	05050122	Pin, Pivot, ½ DIA x 1 ¼, Plated
15	2	05050574	Knob, Plastic Star Grip, ¾ - 16
16	1	05051201	Coupler, Shaft, 1" x 4"
17	1	05006673	Motor, Hydraulic, White, 3.2 CID, 1" Shaft (See pages 34-35)
18	1	00057257-B	Spinner Disc Weldment, 304 SST (Shown in Dotted Line)
	1	05050064	Spinner Disc, Poly (Shown in Dotted Line) (See page 25)
19	1	00057275-B	Bracket Weldment, Bearing Holder, 304 SST
20	1	00070495	Spinner Shaft Modification
21	1	05030023	Bearing, 1" Bore, 2-Bolt (Not Shown) (See page 8)
22	2	05016139	Bolt, ⅝ - 18 x 1 ¼, HHCS, SST (Not Shown)
23	2	05020855	Nut, ⅝ - 18, Hex, SST (Not Shown)
24	1	05050121	Key, ¼ x ¼ x 1 ½" (Not Shown)
25	1	05016166	Bolt, ¾ - 16 x 2 ½, HHCS, SST (Not Shown)
26	4	05016050	Bolt, ¾ - 16 x ¾, HHCS, SST
27	4	05021392	Washer, ¾, Lock, SST (Not Shown)
28	1	00012698	Attachment Kit, Spinner, Hydraulic Drive (Not shown, see page 24)

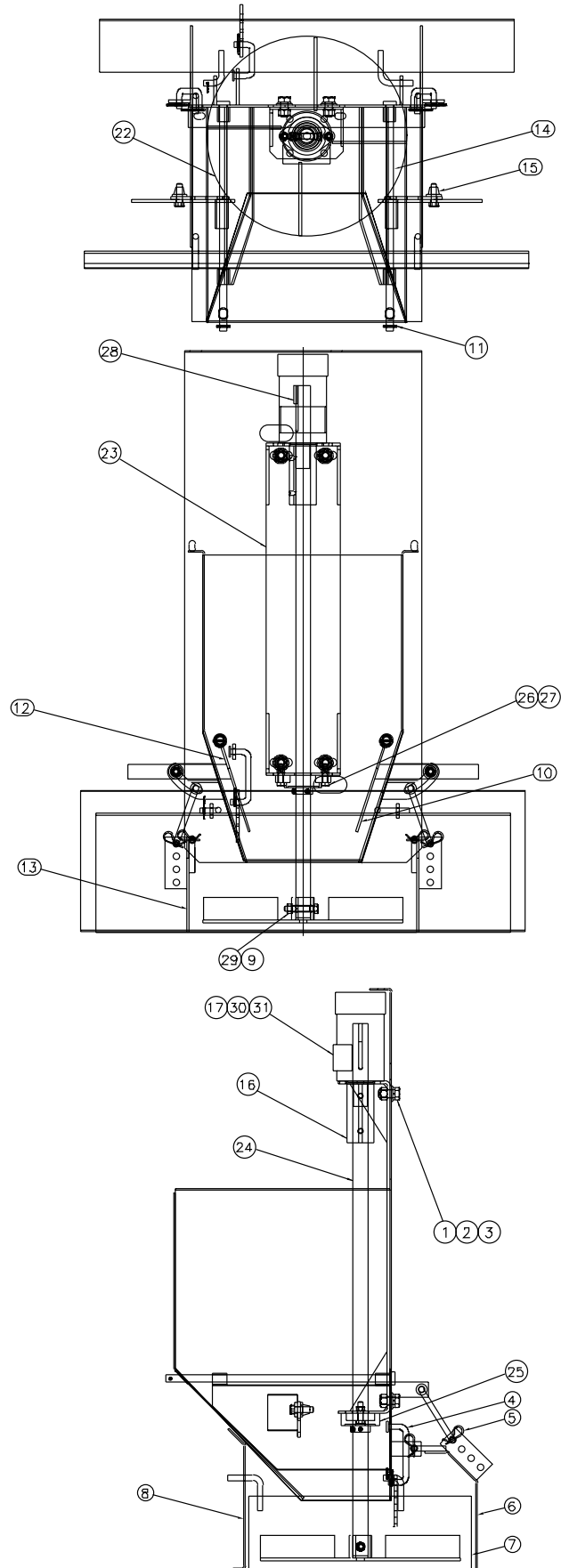
**See page 16 for drawing*

00042731-C SPINNER ASSEMBLY, HYDRAULIC, 409 STAINLESS STEEL

ITEM	QTY	PART #	DESCRIPTION
1	4	05016047	Bolt, ½ - 13 x 1, HHCS, SST
2	4	05021391	Washer, ½, Flat, SST
3	4	05021396	Washer, ½, Lock, SST
4	3	05051225	Arm, Adjuster Link for New-Style
5	6	05022045	Pin, .0725 x 1.562 x ¾, Hair
6	1	00057308-C	Deflector Weldment, Rear, 409 SST
7	1	00057360-C	Deflector Weldment, LH, 409 SST
8	1	00057582-C	Frame Weldment, Spinner, 409 SST
9	1	05020891	Nut, ¾ - 16, Nylon Lock, SST (Not Shown)
10	1	00057348-C	Diverter Weldment, LH, 409 SST
11	2	05022072	Pin, ½ x ¾, Roll, Zinc
12	1	00057347-C	Diverter Weldment, RH, 409 SST
13	1	00057359-C	Deflector Weldment, RH, 409 SST (Not Shown)
14	2	05050122	Pin, Pivot, ½ DIA x 15¼, Plated
15	2	05050574	Knob, Plastic Star Grip, ¾ - 16
16	1	05051201	Coupler, Shaft, 1" x 4"
17	1	05006673	Motor, Hydraulic, White, 3.2 CID, 1" Shaft (See pages 34-35)
18	1	00057257-C	Spinner Disc Weldment, 409 SST (Shown in Dotted Line)
	1	05050064	Spinner Disc, Poly (Shown in Dotted Line) (See page 25)
19	1	00057275-C	Bracket Weldment, Bearing Holder, 409 SST
20	1	00070495	Spinner Shaft Modification
21	1	05030023	Bearing, 1" Bore, 2-Bolt (Not Shown) (See page 8)
22	2	05016139	Bolt, ⅝ - 18 x 1¼, HHCS, SST (Not Shown)
23	2	05020855	Nut, ⅝ - 18, Hex, SST (Not Shown)
24	2	05050121	Key, ¼ x ¼ x 1½" (Not Shown)
25	1	05016166	Bolt, ¾ - 16 x 2½, HHCS, SST (Not Shown)
26	4	05016050	Bolt, ¾ - 16 x ¾, HHCS, SST
27	4	05021392	Washer, ¾, Lock, SST
28	1	00012698	Attachment Kit, Spinner, Hydraulic Drive (Not shown, see page 24.)

**See page 16 for drawing*

Extended Spinner Assembly, Hydraulic



00042732-A SPINNER ASSEMBLY, HYDRAULIC, EXTENDED, MS

ITEM	QTY	PART #	DESCRIPTION
1	4	05010689	Bolt, ½ - 13 x 1, G8, HHCS, Zinc
2	4	05021309	Washer, ½, Flat, Zinc
3	4	05021367	Washer, ½, Lock, Zinc
4	3	05051225	Arm, Adjuster Link for New-Style
5	6	05022045	Pin, .0725 x 1.562 x ¾, Hair
6	1	00057308-A	Deflector Weldment, Rear, MS
7	1	00057360-A	Deflector Weldment, LH, MS
8	1	00057585-A	Frame Weldment, Extended, Spinner, MS
9	1	05020898	Nut, ¾ - 16, Top Lock (Not Shown)
10	1	00057348-A	Diverter Weldment, LH, MS
11	2	05022072	Pin, ½ x ¾, Roll, Zinc
12	1	00057347-A	Diverter Weldment, RH, MS
13	1	00057359-A	Deflector Weldment, RH, MS (Not Shown)
14	2	05050122	Pin, Pivot, ½ DIA x 15¼, Plated
15	2	05050574	Knob, Plastic Star Grip, ¾ - 16 (Not Shown)
16	1	05051201	Coupler, Shaft, 1" x 4"
17	1	05006673	Motor, Hydraulic, White, 3.2 CID, 1" Shaft (See pages 34-35)
18	1	00057257-A	Spinner Disc Weldment, 304
	1	05050064	Spinner Disc, MSPV, Poly (See page 25)
19	1	00057284-A	Shaft Mounting Weldment, MS
20	1	00059548	Spinner Shaft, Modified, Extended, Hydraulic
21	1	05030023	Bearing, 1" Bore, 2-Bolt (Not Shown) (See page 8)
22	2	05010619	Bolt, ⅝ - 18 x 1¼, G8, HHCS, ZINC (Not Shown)
23	2	05020265	Nut, ⅝ - 18, Hex, Zinc (Not Shown)
24	2	05050121	Key, ¼ x ¼ x 1½"
25	1	05010647	Bolt, ¾ - 16 x 2, G8, HHCS, Zinc (Not Shown)
26	4	05010642	Bolt, ¾ - 16 x ¾, G8, HHCS, Zinc
27	4	05021365	Washer, ¾, Lock, Zinc
28	1	00012698	Attachment Kit, Spinner, Hydraulic Drive (Not shown, see page 24)

00042732-B SPINNER ASSEMBLY, HYDRAULIC, EXTENDED, 304 STAINLESS STEEL

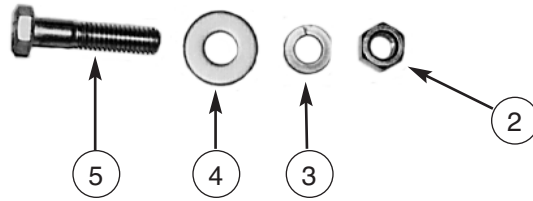
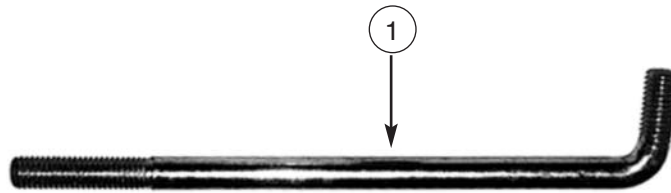
ITEM	QTY	PART #	DESCRIPTION
1	4	05016047	Bolt, ½ - 13 x 1, HHCS, SST
2	4	05021391	Washer, ½, Flat, SST
3	4	05021396	Washer, ½, Lock, SST
4	3	05051225	Arm, Adjuster Link for New-Style
5	6	05022045	Pin, .0725 x 1.562 x ⅜, Hair
6	1	00057308-B	Deflector, Weldment, Rear, 304 SST
7	1	00057360-B	Deflector Weldment, LH, 304 SST
8	1	00057585-B	Frame Weldment, Extended, Spinner, 304 SST
9	1	05020891	Nut, ⅜ - 16, Nylon Lock, SST (Not Shown)
10	1	00057348-B	Diverter Weldment, LH, 304 SST
11	2	05022072	Pin, ⅝ x ⅞, Roll, Zinc
12	1	00057347-B	Diverter Weldment, RH, 304 SST
13	1	00057359-B	Deflector Weldment, RH, 304 SST (Not Shown)
14	2	05050122	Pin, Pivot, ½ DIA x 15¼, Plated
15	2	05050574	Knob, Plastic Star Grip, ⅜ - 16
16	1	05051201	Coupler, Shaft, 1" x 4"
17	1	05006673	Motor, Hydraulic, White, 3.2 CID, 1" Shaft (See pages 34-35)
18	1	00057257-B	Spinner Disc Weldment, 304 SST
	1	05050064	Spinner Disc, MSPV, Poly (See page 25)
19	1	00057284-B	Shaft Mounting Weldment, 304 SST
20	1	00059548	Spinner Shaft, Modified, Extended, Hydraulic
21	1	05030023	Bearing, 1" Bore, 2-Bolt (Not Shown) (See page 8)
22	2	05016139	Bolt, ⅝ - 18 x 1¼, HHCS, SST (Not Shown)
23	2	05020855	Nut, ⅝ - 18, Hex, SST (Not Shown)
24	2	05050121	Key, ¼ x ¼ x 1½"
25	1	05010666	Bolt, ⅜ - 16 x 2½, HHCS, SST (Not Shown)
26	4	05016050	Bolt, ⅜ - 16 x ⅞, HHCS, SST
27	4	05021392	Washer, ⅜, Lock, SST
28	1	00012698	Attachment Kit, Spinner, Hydraulic Drive (Not shown, see page 24)

**See page 20 for drawing.*

00042732-C SPINNER ASSEMBLY, HYDRAULIC, EXTENDED, 409 STAINLESS STEEL

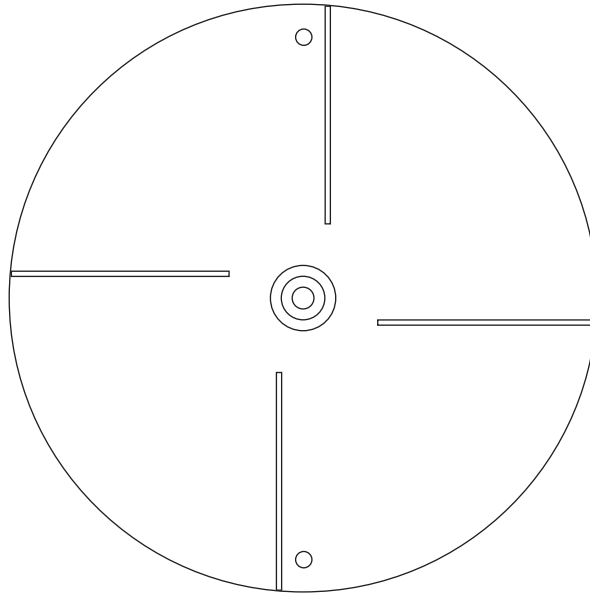
ITEM	QTY	PART #	DESCRIPTION
1	4	05016047	Bolt, ½ - 13 x 1, HHCS, SST
2	4	05021391	Washer, ½, Flat, SST
3	4	05021396	Washer, ½, Lock, SST
4	3	05051225	Arm, Adjuster Link for New-Style
5	6	05022045	Pin, .0725 x 1.562 x ¾, Hair
6	1	00057308-C	Deflector Weldment, Rear, 409 SST
7	1	00057360-C	Deflector Weldment, LH, 409 SST
8	1	00057585-C	Frame Weldment, Extended, Spinner, 409 SST
9	1	05020891	Nut, ¾ - 16, Nylon Lock, SST (Not Shown)
10	1	00057348-C	Diverter Weldment, LH, 409 SST
11	2	05022072	Pin, ½ x ¾, Roll, Zinc
12	1	00057347-C	Diverter Weldment, RH, 409 SST
13	1	00057359-C	Deflector Weldment, RH, 409 SST (Not Shown)
14	2	05050122	Pin, Pivot, ½ DIA x 15¼, Plated
15	2	05050574	Knob, Plastic Star Grip, ¾ - 16 (Not Shown)
16	1	05051201	Coupler, Shaft, 1" x 4"
17	1	05006673	Motor, Hydraulic, White, 3.2 CID, 1" Shaft (See pages 34-35)
18	1	00057257-C	Spinner Disc Weldment, 409 SST
	1	05050064	Spinner Disc, Poly (See page 25)
19	1	00057284-C	Shaft Mounting Weldment, 409 SST
20	1	00059548	Spinner Shaft, Modified, Extended, Hydraulic
21	1	05030023	Bearing, 1" Bore, 2-Bolt (Not Shown) (See page 8)
22	2	05016139	Bolt, ⅝ - 18 x 1¼, HHCS, SST (Not Shown)
23	2	05020855	Nut, ⅝ - 18, Hex, SST (Not Shown)
24	2	05050121	Key, ¼ x ¼ x 1½"
25	1	05010666	Bolt, ¾ - 16 x 2½, HHCS, SST (Not Shown)
26	4	05016050	Bolt, ¾ - 16 x ¾, HHCS, SST
27	4	05021392	Washer, ¾, Lock, SST
28	1	00012698	Attachment Kit, Spinner, Hydraulic Drive (Not shown, see page 24)

**See page 20 for drawing.*



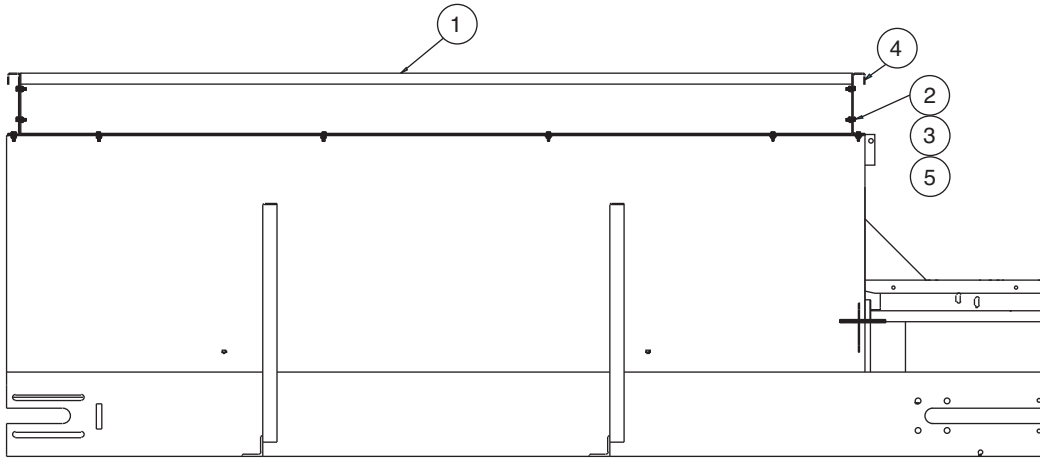
00012698 ATTACHMENT KIT, SPINNER, MOTOR DRIVE

ITEM	QTY	PART #	DESCRIPTION
1	2	05051069	Rod, $\frac{3}{8}$ - 16 x 8 $\frac{1}{2}$, 90° Bend
2	4	05020266	Nut, $\frac{3}{8}$ - 16, G8, Hex, Zinc
3	4	05021365	Washer, $\frac{3}{8}$, Lock, Zinc
4	8	05021307	Washer, $\frac{3}{8}$, Flat, Zinc
5	2	05010643	Bolt, $\frac{3}{8}$ - 16 x 1, G8, HHCS, Zinc
6	2	05020898	Nut, $\frac{3}{8}$ - 16, Top Lock, C&W, GR C



SPINNER DISC ASSEMBLY

ITEM	QTY	PART #	DESCRIPTION
1	1	00057257-A	Spinner Disc Weldment, MS
	1	00057257-B	Spinner Disc Weldment, 304 SST
	1	00057257-C	Spinner Disc Weldment, 409 SST
	1	05050064	Spinner Disc, Poly
2	1	05010647	Bolt, $\frac{3}{8}$ - 16 x 2, GR8, HHCS, Zinc
3	1	05020898	Nut, $\frac{3}{8}$ - 16, GRC, Top Lock, C&W



*7' Shown

00038006-A EXTENSION KIT, 84 x 50 x 6, MS
00038006-B EXTENSION KIT, 84 x 50 x 6, 304 SST
00038006-C EXTENSION KIT, 84 x 50 x 6, 409 SST

ITEM	QTY	PART #	DESCRIPTION
1	2	00034585-A	Extension Weldment, 84 x 50 x 6, MS
	2	00034585-B	Extension Weldment, 84 x 50 x 6, 304 SST
	2	00034585-C	Extension Weldment, 84 x 50 x 6, 409 SST
2	20	05010618	Bolt, $\frac{5}{16}$ - 18 x 1, G8, HHCS, Zinc
	20	05016138	Bolt, $\frac{5}{16}$ - 18 x 1, HHCS, SST
3	20	05020265	Nut, $\frac{5}{16}$ - 18, G8, Hex, Zinc
	20	05020855	Nut, $\frac{5}{16}$ - 18, Hex, SST
4	2	00023106-A	Extension Panel, 6 x 50 $\frac{1}{2}$, MS
	2	00023106-B	Extension Panel, 6 x 50 $\frac{1}{2}$, 304 SST
	2	00023106-C	Extension Panel, 6 x 50 $\frac{1}{2}$, 409 SST
5	20	05021364	Washer, $\frac{5}{16}$, Lock, Zinc
	20	05021407	Washer, $\frac{5}{16}$, Lock, SST

00057518 EXTENSION KIT, 96 x 50 x 6, MS
00057519 EXTENSION KIT, 96 x 50 x 6, 304 SST
00057520 EXTENSION KIT, 96 x 50 x 6, 409 SST

ITEM	QTY	PART #	DESCRIPTION
1	2	00034584-A	Extension Weldment, 96 x 50 x 6, MS
	2	00034584-B	Extension Weldment, 96 x 50 x 6, 304 SST
	2	00034584-C	Extension Weldment, 96 x 50 x 6, 409 SST
2	22	05010618	Bolt, $\frac{5}{16}$ - 18 x 1, G8, HHCS, Zinc
	22	05016138	Bolt, $\frac{5}{16}$ - 18 x 1, HHCS, SST
3	22	05020265	Nut, $\frac{5}{16}$ - 18, G8, Hex, Zinc
	22	05020855	Nut, $\frac{5}{16}$ - 18, Hex, SST
4	2	00023106-A	Extension Panel, 6 x 50 $\frac{1}{2}$, MS
	2	00023106-B	Extension Panel, 6 x 50 $\frac{1}{2}$, 304 SST
	2	00023106-C	Extension Panel, 6 x 50 $\frac{1}{2}$, 409 SST
5	22	05021364	Washer, $\frac{5}{16}$, Lock, Zinc
	22	05021407	Washer, $\frac{5}{16}$, Lock, SST

00038008-A EXTENSION KIT, 108 x 50 x 6, MS
00038008-B EXTENSION KIT, 108 x 50 x 6, 304 SST
00038008-C EXTENSION KIT, 108 x 50 x 6, 409 SST

ITEM	QTY	PART #	DESCRIPTION
1	2	00034588-A	Extension Weldment, 108 x 50 x 6, MS
	2	00034588-B	Extension Weldment, 108 x 50 x 6, 304 SST
	2	00034588-C	Extension Weldment, 108 x 50 x 6, 409 SST
2	22	05010618	Bolt, $\frac{5}{16}$ - 18 x 1, G8, HHCS, Zinc
	22	05016138	Bolt, $\frac{5}{16}$ - 18 x 1, HHCS, SST
3	22	05020265	Nut, $\frac{5}{16}$ - 18, G8, Hex, Zinc
	22	05020855	Nut, $\frac{5}{16}$ - 18, Hex, SST
4	2	00023106-A	Extension Panel, 6 x 50 $\frac{1}{2}$, MS
	2	00023106-B	Extension Panel, 6 x 50 $\frac{1}{2}$, 304 SST
	2	00023106-C	Extension Panel, 6 x 50 $\frac{1}{2}$, 409 SST
5	22	05021364	Washer, $\frac{5}{16}$, Lock, Zinc
	22	05021407	Washer, $\frac{5}{16}$, Lock, SST

00012291-A EXTENSION KIT, 120 x 50 x 6, MS
00012291-B EXTENSION KIT, 120 x 50 x 6, 304 SST
00012291-C EXTENSION KIT, 120 x 50 x 6, 409 SST

ITEM	QTY	PART #	DESCRIPTION
1	2	00034589-A	Extension Weldment, 120 x 50 x 6, MS
	2	00034589-B	Extension Weldment, 120 x 50 x 6, 304 SST
	2	00034589-C	Extension Weldment, 120 x 50 x 6, 409 SST
2	24	05010618	Bolt, $\frac{5}{16}$ - 18 x 1, G8, HHCS, Zinc
	24	05016138	Bolt, $\frac{5}{16}$ - 18 x 1, HHCS, SST
3	24	05020265	Nut, $\frac{5}{16}$ - 18, G8, Hex, Zinc
	24	05020855	Nut, $\frac{5}{16}$ - 18, Hex, SST
4	2	00023106-A	Extension Panel, 6 x 50 $\frac{1}{2}$, MS
	2	00023106-B	Extension Panel, 6 x 50 $\frac{1}{2}$, 304 SST
	2	00023106-C	Extension Panel, 6 x 50 $\frac{1}{2}$, 409 SST
5	24	05021364	Washer, $\frac{5}{16}$, Lock, Zinc
	24	05021407	Washer, $\frac{5}{16}$, Lock, SST

00038913-A EXTENSION KIT, 96 x 50 x 12, MS
00038913-B EXTENSION KIT, 96 x 50 x 12, 304 SST
00038913-C EXTENSION KIT, 96 x 50 x 12, 409 SST

ITEM	QTY	PART #	DESCRIPTION
1	2	00034583-A	Extension Weldment, 96 x 50 x 12, MS
	2	00034583-B	Extension Weldment, 96 x 50 x 12, 304 SST
	2	00034583-C	Extension Weldment, 96 x 50 x 12, 409 SST
2	26	05010618	Bolt, 5/16 - 18 x 1, G8, HHCS, Zinc
	26	05016138	Bolt, 5/16 - 18 x 1, HHCS, SST
3	26	05020265	Nut, 5/16 - 18, G8, Hex, Zinc
	26	05020855	Nut, 5/16 - 18, Hex, SST
4	2	00023295-A	Extension Side, 12" PL Bolt On, MS
	2	00023295-B	Extension Side, 12" PL Bolt On, 304 SST
	2	00023295-C	Extension Side, 12" PL Bolt On, 409 SST
5	26	05021364	Washer, 5/16, Lock, Zinc
	26	05021407	Washer, 5/16, Lock, SST

00038914-A EXTENSION KIT, 108 x 50 x 12, MS
00038914-B EXTENSION KIT, 108 x 50 x 12, 304 SST
00038914-C EXTENSION KIT, 108 x 50 x 12, 409 SST

ITEM	QTY	PART #	DESCRIPTION
1	2	00034581-A	Extension Weldment, 108 x 50 x 12, MS
	2	00034581-B	Extension Weldment, 108 x 50 x 12, 304 SST
	2	00034581-C	Extension Weldment, 108 x 50 x 12, 409 SST
2	26	05010618	Bolt, 5/16 - 18 x 1, G8, HHCS, Zinc
	26	05016138	Bolt, 5/16 - 18 x 1, HHCS, SST
3	26	05020265	Nut, 5/16 - 18, G8, Hex, Zinc
	22	05020855	Nut, 5/16 - 18, Hex, SST
4	2	00023295-A	Extension Side, 12" PL Bolt On, MS
	2	00023295-B	Extension Side, 12" PL Bolt On, 304 SST
	2	00023295-C	Extension Side, 12" PL Bolt On, 409 SST
5	26	05021364	Washer, 5/16, Lock, Zinc
	26	05021407	Washer, 5/16, Lock, SST

00038915-A EXTENSION KIT, 120 x 50 x 12, MS
00038915-B EXTENSION KIT, 120 x 50 x 12, 304 SST
00038915-C EXTENSION KIT, 120 x 50 x 12, 409 SST

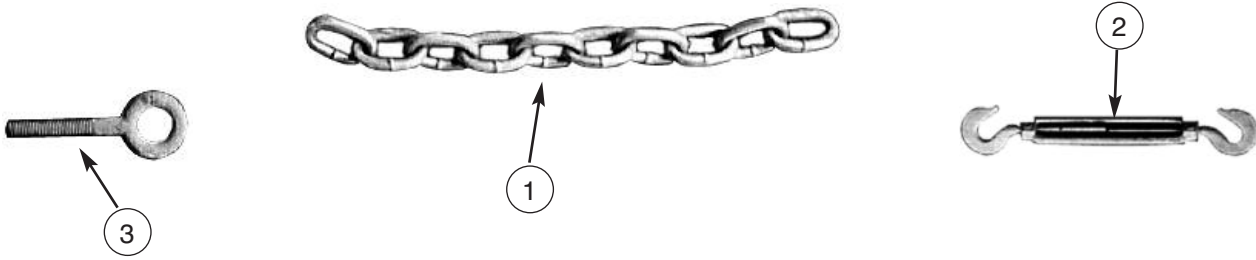
ITEM	QTY	PART #	DESCRIPTION
1	2	00034582-A	Extension Weldment, 120 x 50 x 12, MS
	2	00034582-B	Extension Weldment, 120 x 50 x 12, 304 SST
	2	00034582-C	Extension Weldment, 120 x 50 x 12, 409 SST
2	28	05010618	Bolt, 5/16 - 18 x 1, G8, HHCS, Zinc
	28	05016138	Bolt, 5/16 - 18 x 1, HHCS, SST
3	28	05020265	Nut, 5/16 - 18, G8, Hex, Zinc
	28	05020855	Nut, 5/16 - 18, Hex, SST
4	2	00023295-A	Extension Side, 12" PL Bolt On, MS
	2	00023295-B	Extension Side, 12" PL Bolt On, 304 SST
	2	00023295-C	Extension Side, 12" PL Bolt On, 409 SST
5	28	05021364	Washer, 5/16, Lock, Zinc
	28	05021407	Washer, 5/16, Lock, SST

MSPV TOP GRATE WELDMENTS, 1/4" ROD

ITEM	QTY	PART #	DESCRIPTION
1	1	00057512	Top Grate Weldment, 7', 1/4" Rod
2	1	00057509	Top Grate Weldment, 8', 1/4" Rod
3	1	00038000	Top Grate Weldment, 9', 1/4" Rod
4	1	00044948	Top Grate Weldment, 10', 1/4" Rod

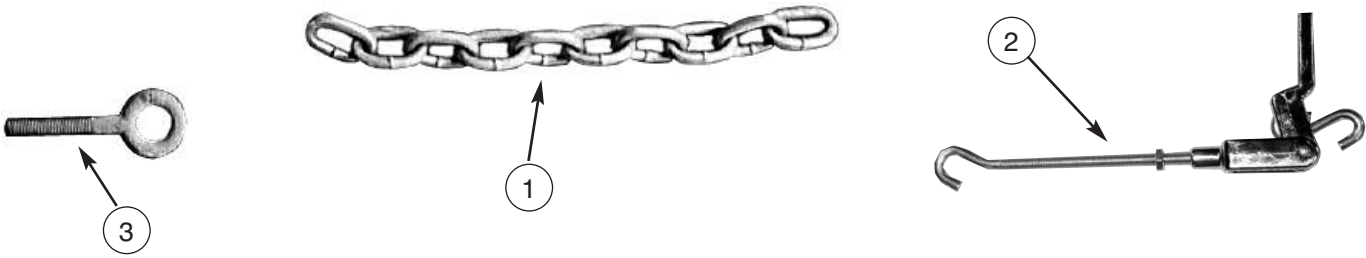
MSPV TOP GRATE WELDMENTS, 3/8" ROD

ITEM	QTY	PART #	DESCRIPTION
1	1	00057591	Top Grate Weldment, 7', 3/8" Rod
2	1	00057593	Top Grate Weldment, 8', 3/8" Rod
3	2	00051098	Top Grate Weldment, 9', 3/8" Rod
4	2	00051097	Top Grate Weldment, 10', 3/8" Rod



00057595 TURNBUCKLE MOUNTING KIT

ITEM	QTY	PART #	DESCRIPTION
1	4	05036106	Chain, ¼" High Test, 12" OAL
2	4	05051060	Turnbuckle, ⅜" x 6"
3	4	05051062	Eye Bolt, ⅝ - 16 x 2½, 120 Style
4	8	05020266	Nut, ⅝ - 16, G8, Hex, Zinc
5	16	05021307	Washer, ⅝, Flat, Zinc
6	4	05020898	Nut, ⅝ - 16, Top Lock, C&W
7	4	05021365	Washer, ⅝, Lock, Zinc
8	4	05010643	Bolt, ⅝ - 16 x 1, G8, HHCS, Zinc



00012396 CHAIN BINDER MOUNTING KIT

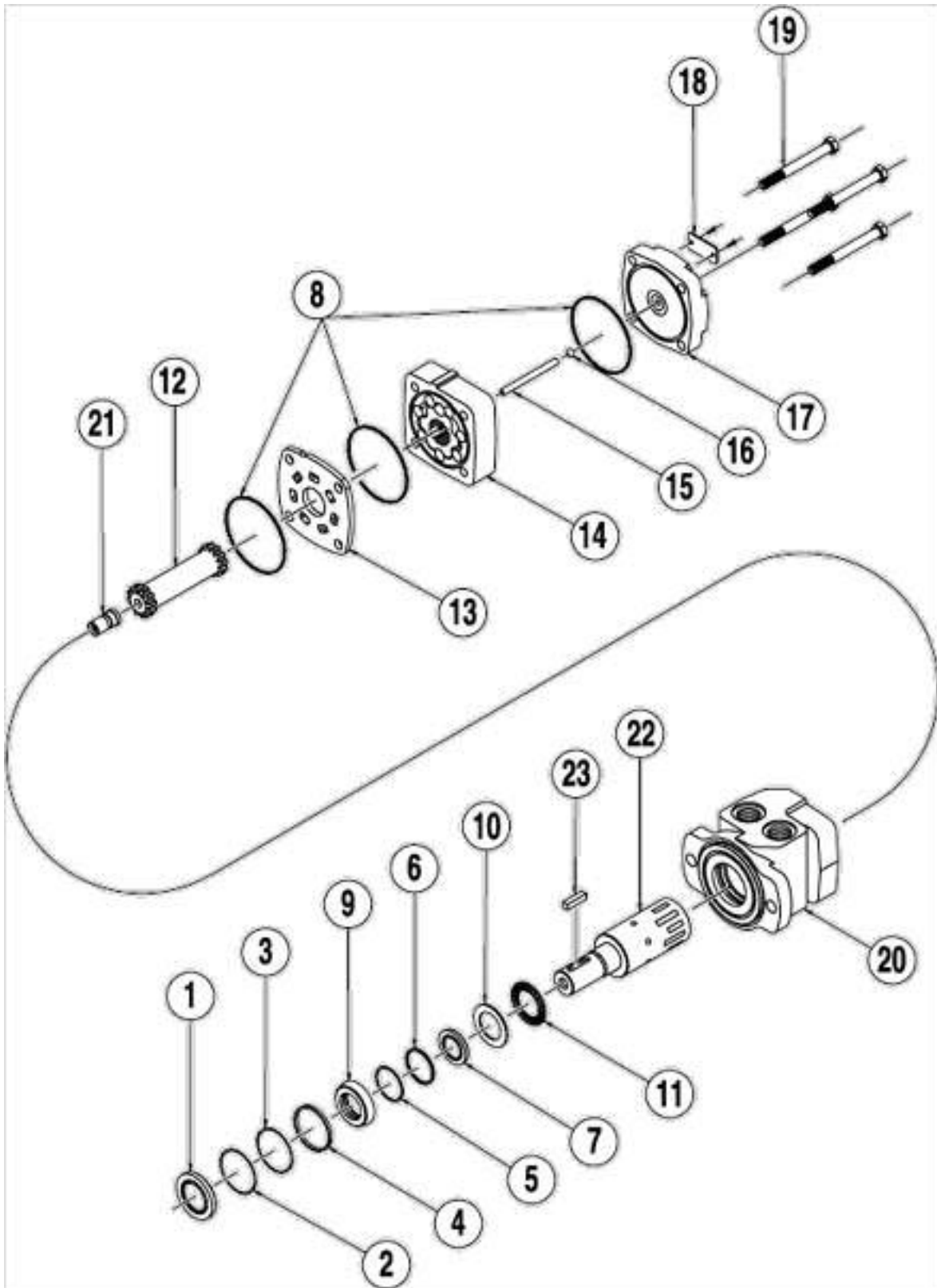
ITEM	QTY	PART #	DESCRIPTION
1	4	05036106	Chain, ¼" High Test, 12" OAL
2	1	05050050	Clamper, Chrome Plated Set of 4
3	4	05051062	Eye Bolt, ⅝ - 16 x 2½, 120 Style
4	4	05010645	Bolt, ⅝ - 16 x 1½, G8, HHCS, Zinc
5	12	05021307	Washer, ⅝, Flat, Zinc
6	4	05021365	Washer, ⅝, Lock, Zinc
7	8	05020266	Nut, ⅝ - 16, G8, Hex, Zinc
8	4	05020898	Nut, ⅝ - 16, GC, Top Lock, C&W

DECAL KIT, AUGER MSPV

ITEM	QTY	PART #	DESCRIPTION
1	1	05051410	Decal, Measurement, Door Opening
2	2	05051405	Decal, Monroe Spreader
3	1	05051404	Decal, Caution, 1-6
4	1	05051407	Decal, Warning, Eye Protection
5	1	05051409	Decal, Caution, Use Care When Mounting & Dismounting
6	1	05051511	Decal, Danger, Turn Power Off Before Servicing <i>(Small)</i>
7	2	05051406	Decal, Danger, Turn Power Off Before Servicing <i>(Large)</i>
8	5	05051401	Decal, Danger, Turning Auger
9	1	05050681	Decal, Bonded Powder Coat Paint
10	1	05052310	Decal, Danger Keep All Guards In Place
11	1	05051625	Decal, Monroe Snow & Ice Control
12	1	05052311	Decal, Quality Inspection

Should you ever need replacement decals or parts/maintenance manuals, simply contact MTE and we will supply you with them FREE OF CHARGE.

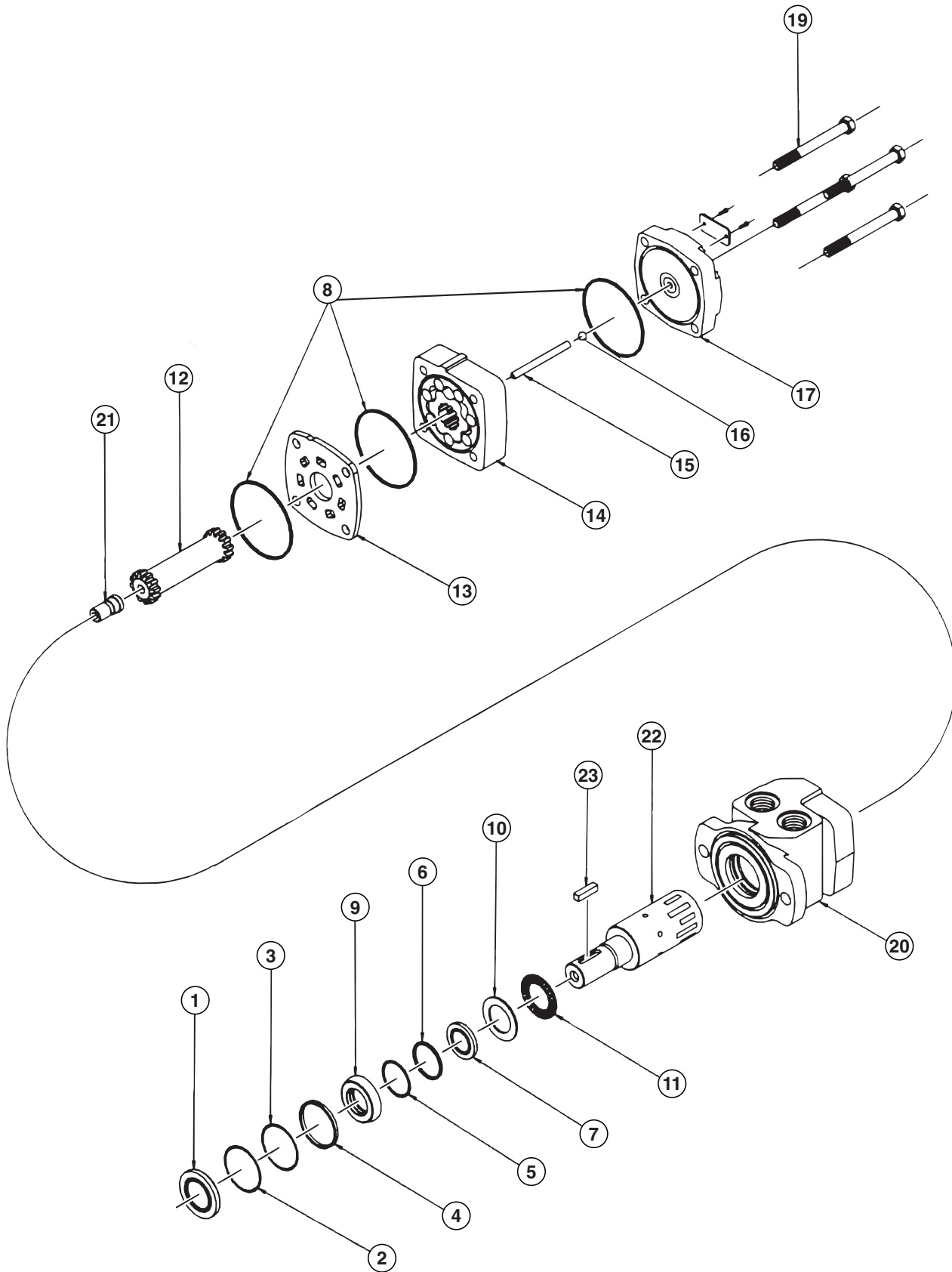
05006556 MOTOR, HYDRAULIC, WHITE, 24 CI, 4 BOLT



MOTOR ASSEMBLY PARTS LIST

Item	Part Number	Description
1	Seal Kit	Dust Seal
2		Split Wire Ring
3		Metal Backup Shim
4		High Pressure Seal
5		Metal Backup Shim
6		Teflon Backup Shim
7		Shaft Seal
8		Body Seals (3)
9		Seal Carrier
10		Thrust Washer
11	05006357	Thrust Bearing
12	05006366	Drive Link Kit
13	05006359	Wear Plate
14	05006365	Rotor Kit
15	05006367	Drive Link Pin Kit
16	---	Included in item #15 Drive Link Pin Kit
17	05006360	End Cover
18	---	Serial Number Plate
19	05006368	Bolt Set Kit
20	05006564	Housing Kit, 2-Hole, w/ 7/8" O-Ring
21	05006358	Cooling Plug
22	05006370	Shaft Kit, 1" Straight Speed Sensor
23	05006371	Key Kit, 1" Straight Speed Sensor

05006673 MOTOR, HYD, WHITE, 3.2CI, 4B, 1" EXT SHAFT, .875" ORB/SEAL SAVER



MOTOR ASSEMBLY PARTS LIST

Item	Part Number	Description
1	Seal Kit 05006679	Dust Seal
2		Split Wire Ring
3		Metal Backup Shim
4		High Pressure Seal
5		Metal Backup Shim
6		Teflon Backup Shim
7		Shaft Seal
8		Body Seals (3)
9		Seal Carrier
10		Thrust Washer
11	---	Thrust Bearing
12	---	Drive Link Kit
13	---	Wear Plate
14	---	Rotor Kit
15	---	Drive Link Pin Kit
16	---	Included in item #15 Drive Link Pin Kit
17	---	End Cover
18	---	Serial Number Plate
19	---	Bolt Set Kit
20	05006564	Housing Kit, 4-Hole, w/ 7/8" O-Ring
21	---	Cooling Plug
22	05006410	Shaft Kit 1" Straight Speed Sensor
23	---	Key Kit, 1" Straight

HOW TO ORDER PARTS

To order or inquire about replacement parts, please contact the **distributor** or **store** that the product was purchased through. To speed the information flow, please have the following information ready:

- Model Number
- Serial Number
- Part Number and/or description as per the parts manual
- Quantity needed

For further information about **Monroe Truck Equipment** replacement parts, please call 800-880-0109 and ask for **Snow & Ice Parts Sales**.

RETURN POLICY

Merchandise returned to **Monroe Truck Equipment** must have a Warranty Service Request (WSR) form filled out completely and signed by authorized personnel. To get your WSR form, call 800-880-0109. For whole goods ask for **Snow & Ice Sales**. For replacement parts, ask for **Snow & Ice Parts Sales**. All returned items are subject to a 15% restocking fee and must be sent freight prepaid!

MONROE TRUCK EQUIPMENT, INC. WARRANTY SNOW & ICE CONTROL PRODUCTS

Monroe Truck Equipment, Inc. warrants to the original purchaser, that if any part of the product proves to be defective in workmanship or material within **ONE YEAR** of the original installation, and is returned to us within 30 days of the discovered defect, we will (at our option) repair or replace the defective part. This warranty does not apply to damage resulting from misuse, neglect, accident, improper installation, normal wear items or lack of maintenance. This warranty is exclusive and supersedes all other warranties, whether expressed or implied. **Monroe Truck Equipment, Inc.** neither assumes, nor authorizes anyone to assume for it, any other obligation or liability in connection with this warranty and will not be liable for consequential damages.

All engines, pumps, motors, cylinders and valves are warranted by their manufacturer and not by **Monroe Truck Equipment, Inc.**. The manufacturer's warranty will apply to these parts. Electrical and hydraulic components are not to be disassembled without the express written permission of Monroe Truck Equipment. Use of replacement parts other than original equipment voids this warranty.

All defective parts returned must be accompanied by the model number, serial number, date installed, date of defect, description of defect, and the name of the distributor from whom it was purchased. All warranty claims must have prior written approval from **Monroe Truck Equipment, Inc.**

Please return the warranty registration card that accompanies this manual to confirm receipt of this parts catalog and acknowledge the information contained within. Failure to return the attached card may result in a voided warranty.



1051 West 7th Street
Monroe, WI 53566
608-328-8127 ~ Fax: 608-328-4278

Warranty Policy

Uninstalled Parts and Equipment Provided by Monroe Truck Equipment

Monroe Truck Equipment will provide the following limited warranty for a period of one year to the original purchaser of all uninstalled goods provided by Monroe Truck Equipment:

LIMITED WARRANTY: All goods provided by Monroe Truck Equipment (MTE) will be free from defects in material and workmanship for a period of one year from the date of purchase by the original purchaser. This limited warranty shall be the sole and exclusive remedy for any such product found to be defective. This limited warranty supercedes all previous warranties and is exclusive and in lieu of all other warranties, whether expressed or implied.

This limited warranty applies only to parts or accessories manufactured by MTE and/or provided by same. Except with respect to title, this limited warranty does not pertain to parts or accessories not manufactured and/or provided by MTE, regardless of whether such parts or accessories were selected and/or recommended by MTE. MTE will, as a service to the buyer, pass on any warranties received from the original manufacturer of MTE provided parts and/or accessories.

MTE will not under any circumstances be liable for any incidental or consequential damages whether in tort, contract, or otherwise, for any bodily injury, death, property damage, loss of use, or loss of income resulting from or in any way arising out of any goods provided by MTE, or their sale, use, or manufacture.

Any warranty claim deemed to be arising from the result of misuse, abuse, neglect, accident, improper installation, lack of maintenance, act of war (whether declared or otherwise), or act of God will be denied. Any repair or modification by the buyer or any third party, without the prior written consent of MTE, will void any possible warranty compensation. Any damage deemed to be the result of abnormal operation will not be compensated by this warranty.

Normal or special maintenance items such as fuels, fluids, tires, belts, hoses, filters, air cleaners, light bulbs, and any other items subject to normal wear and tear that are supplied in connection with goods provided by MTE are not allowed under this warranty.

All engines, pumps, cylinders, valves, and motors are warranted by their manufacturer and not by Monroe Truck Equipment. The manufacturer's warranty will apply to these parts. Electrical and hydraulic components are not to be disassembled without the express written consent of MTE. Any disassembly of MTE provided components without prior authorization will void the applicable warranty.

Monroe Truck Equipment shall be the sole and final determining authority as it applies to the administration of this warranty policy. Purchaser acknowledges receipt of Monroe Truck Equipment Warranty Policy and agrees to be bound by same.



GLOBAL SOLUTIONS
ARMORED VEHICLES ~ SPORT TRUCK CONVERSIONS
MUNICIPAL SNOW & ICE CONTROL ~ FIRE APPARATUS
PICKUP TRUCK ACCESSORIES ~ TRUCK EQUIPMENT/MODIFICATIONS





1051 West 7th Street
Monroe, WI 53566
608-328-8127 ~ Fax: 608-328-4278

Any and all warranty claims must be forwarded to MTE within 10 days of defect discovery. A copy of the original Monroe Truck Equipment invoice as well as the manufacturer's model number, serial number, and date of installation must accompany all correspondence regarding said claims. MTE will, at their option, choose whether to repair or replace the defective part unless otherwise specified by the original manufacturer of said part.

Procedures for Warranty Claims Notification

For submission of any warranty claim please contact Monroe Truck Equipment – Warranty Department at 800-356-8134

The following documentation will be needed when you call for initial warranty authorization:

1. A copy of the original MTE invoice.
2. Make, Model, and VIN or Serial Number of the equipment involved.
3. Part number and serial number of the part in question.
4. A complete description of the problem.

The following must accompany any claim submitted to Monroe Truck Equipment:

1. Documented photographs of any physical damage.
2. Inspection notes by MTE personnel or MTE authorized 3rd party.
3. Authorization number issued by Monroe Truck Equipment – Warranty Department.

Defective parts must be returned to Monroe Truck Equipment (freight prepaid) within 30 days of issuance of Authorization Number.

Monroe Truck Equipment reserves the right to void any warranty for failure to comply with Monroe Truck Equipment Warranty Policy.

This policy is effective October 11, 2012

