



SPREADER MSPV

HYDRAULIC
11.0 HONDA
10.5 BRIGGS

Service and Parts Manual



Monroe Snow & Ice Control

A Division of Monroe Truck Equipment

1051 W. 7th Street

Monroe, WI 53566

Phone: 608-328-8127

Fax: 608-329-8488

Website: www.monroetruck.com

Email: snowandicecontrol@monroetruck.com

05090431

11/13/2012

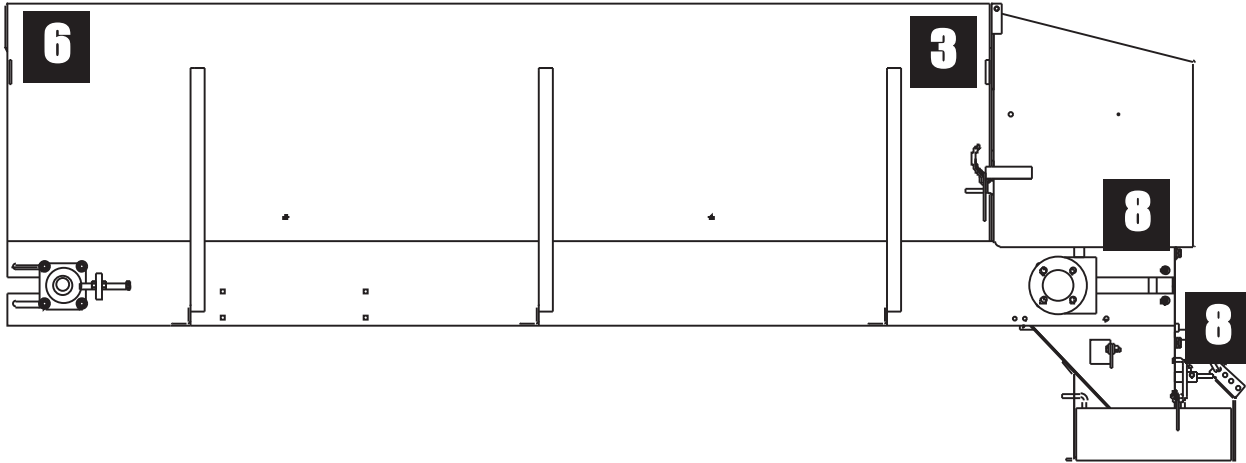


TABLE OF CONTENTS

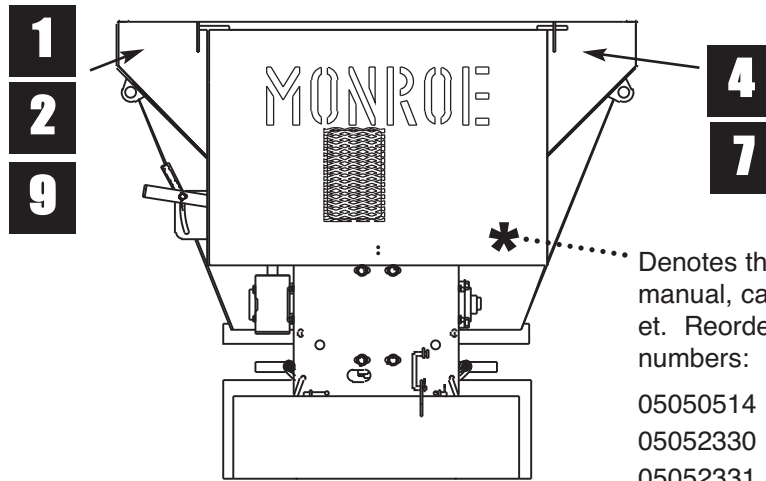
Safety Instructions	2-6
Maintenance Instructions	7
Installation Instructions	8-14
Replacement Parts	20-59
How to Order Parts	60
Return Policy	60
Warranty Registration	61-62

SAFETY DECAL LOCATIONS--ENGINE DRIVEN UNIT

DRIVER SIDE



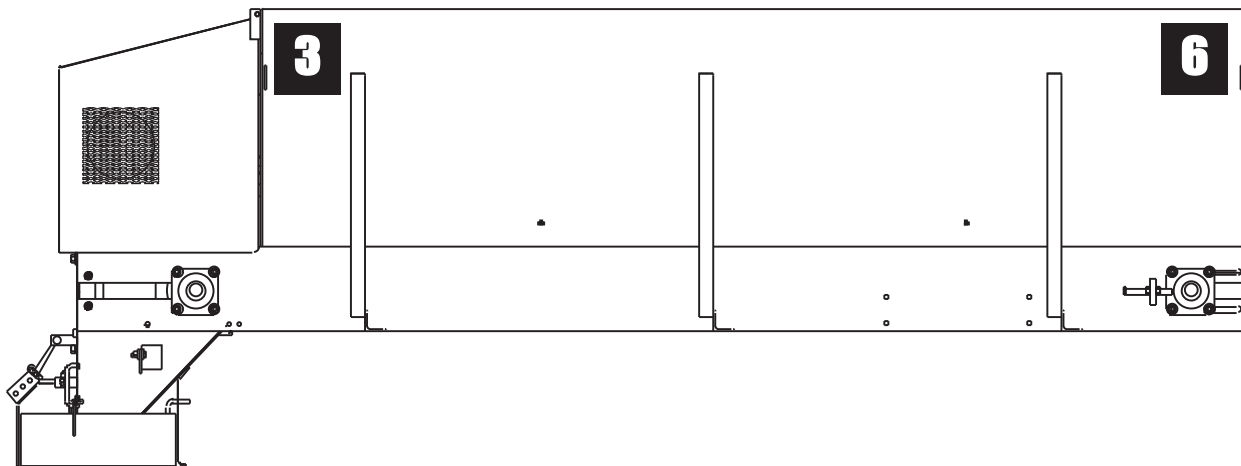
REAR VIEW



Denotes the location of the parts manual, canister and canister bracket. Reorder with the following part numbers:

- | | |
|----------|------------------|
| 05050514 | Parts Manual |
| 05052330 | Canister |
| 05052331 | Canister Bracket |

PASSENGER SIDE



SAFETY DECALS--ENGINE DRIVEN UNIT

1



CAUTION

Use care when mounting or dismounting.

IF DEFACED - ORDER PART NO. 05051409

5



WARNING

Turning spinners throw material. Stay clear & wear eye protection while spinner is turning. Failure to heed will result in serious injury.

IF DEFACED - ORDER PART NO. 05051402

2

CAUTION

1. Keep all guards/shields in place.
2. Make certain everyone is clear of machine before starting engine or operation.
3. Keep hands, feet and clothing away from power driven parts.
4. Disengage PTO, shut off hydraulic valve and set parking brake before leaving operator's position. Make sure all movement has stopped before servicing or unclogging machine.
5. Make sure machine is solidly supported when it is being mounted, dismounted or stored.
6. Use flashing lights when operating machine.

IF DEFACED - ORDER PART NO. 05051404

6



DANGER

Moving conveyor!

- Disconnect and lockout power before servicing, adjusting or cleaning.
- Keep hands, feet, hair and loose clothing away from moving parts at all times
- Never remove or modify guards or shields

Failure to heed will result in **limbs injury** or death.

IF DEFACED - ORDER PART NO. 05052309

3



DANGER

Moving conveyor/auger!

- Disconnect and lockout power before servicing, adjusting or cleaning.
- Keep hands, feet, hair and loose clothing away from moving parts at all times
- Never remove or modify guards or shields

Failure to heed will result in **limbs injury** or death.

IF DEFACED - ORDER PART NO. 05051406

7



DANGER

Moving conveyor/auger!

- Disconnect and lockout power before servicing, adjusting or cleaning.
- Keep hands, feet, hair and loose clothing away from moving parts at all times
- Never remove or modify guards or shields

Failure to heed will result in **limbs injury** or death.

IF DEFACED - ORDER PART NO. 05051911

8

DANGER

Keep all guards/shields in place. Moving parts can crush and dismember.

IF DEFACED - ORDER PART NO. 05052310

4



WARNING

Flying debris. Stay clear and wear eye protection. Failure to heed will result in serious injury.

IF DEFACED - ORDER PART NO. 05051407

9

WARNING

The engine exhaust from this product contains chemicals known to the State of California to cause cancer, birth defects or other reproductive harm.

IF DEFACED - ORDER PART NO. 05051512

Should you ever need replacement decals or parts/maintenance manuals, simply contact MTE and we will supply you with them FREE OF CHARGE. See page 24-25 for safety decal replacement part numbers.

SAFETY DECAL SIGNAL WORDS

DANGER DANGER (Red) indicates an imminently hazardous situation which, if not avoided, will result in death or serious injury.

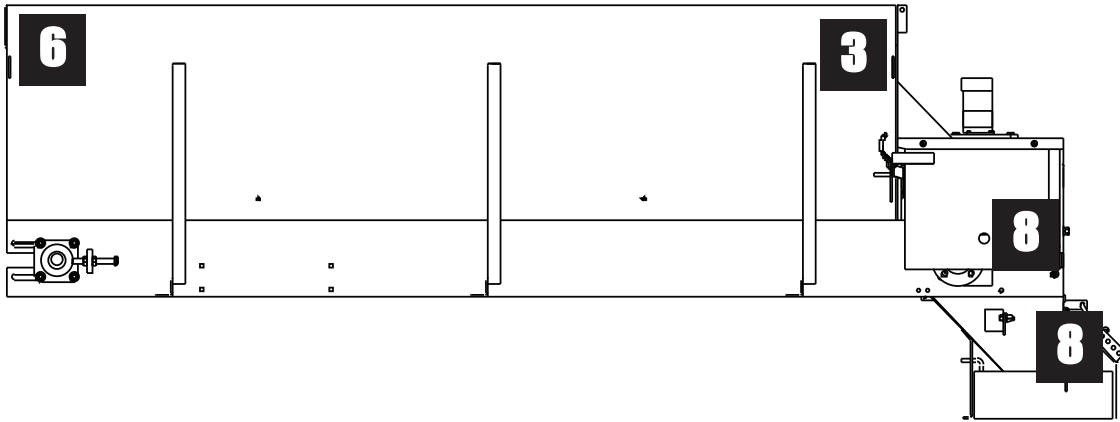
WARNING WARNING (Orange) indicates a potentially hazardous situation which, if not avoided, could result in death or serious injury.

CAUTION CAUTION (Yellow) indicates a potentially hazardous situation which, if not avoided, may result in minor or moderate injury.

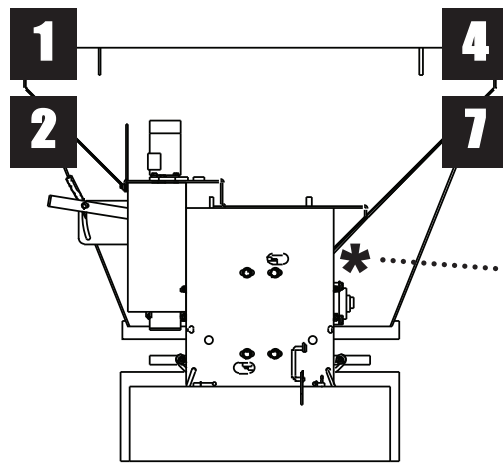
CAUTION CAUTION (Yellow) used without the safety risk alert symbol indicates a potentially hazardous situation which, if not avoided, may result in property damage.

SAFETY DECAL LOCATIONS--HYDRAULIC DRIVEN UNIT

DRIVER SIDE



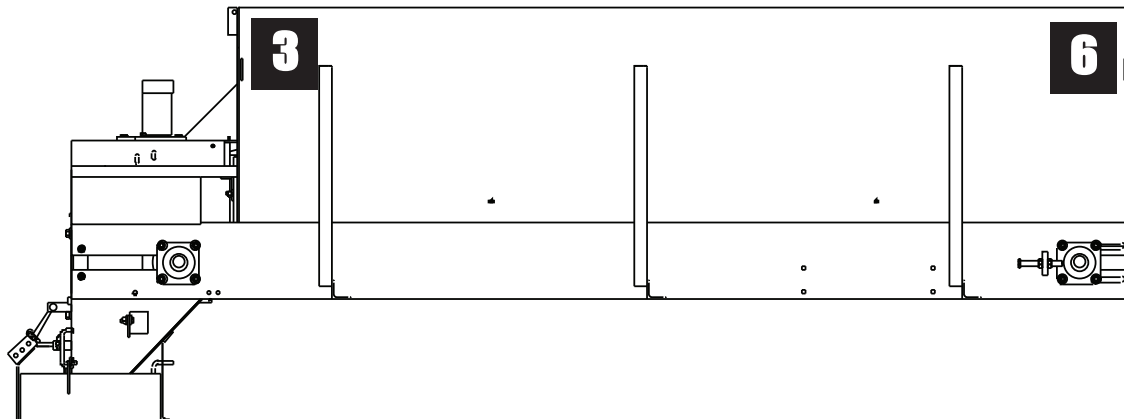
REAR VIEW



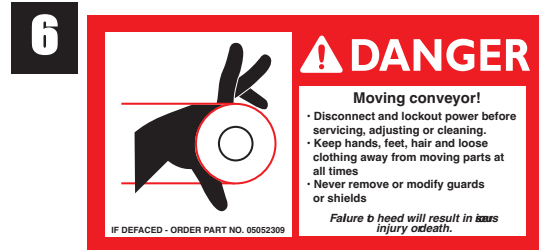
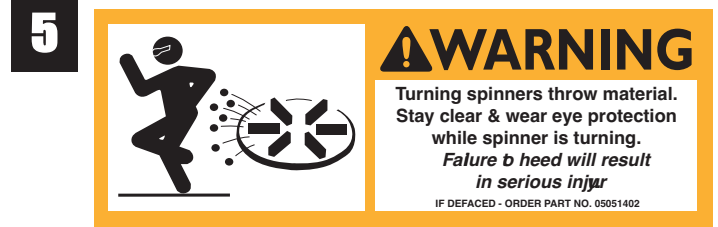
Denotes the location of the parts manual, canister and canister bracket. Reorder with the following part numbers:

- 05050514 Parts Manual
- 05052330 Canister
- 05052331 Canister Bracket

PASSENGER SIDE



SAFETY DECALS--HYDRAULIC DRIVEN UNIT



Should you ever need replacement decals or parts/maintenance manuals, simply contact MTE and we will supply you with them FREE OF CHARGE. See [page 22-23](#) for safety decal replacement part numbers.

SAFETY DECAL SIGNAL WORDS

DANGER DANGER (*Red*) indicates an imminently hazardous situation which, if not avoided, will result in death or serious injury.

WARNING WARNING (*Orange*) indicates a potentially hazardous situation which, if not avoided, could result in death or serious injury.

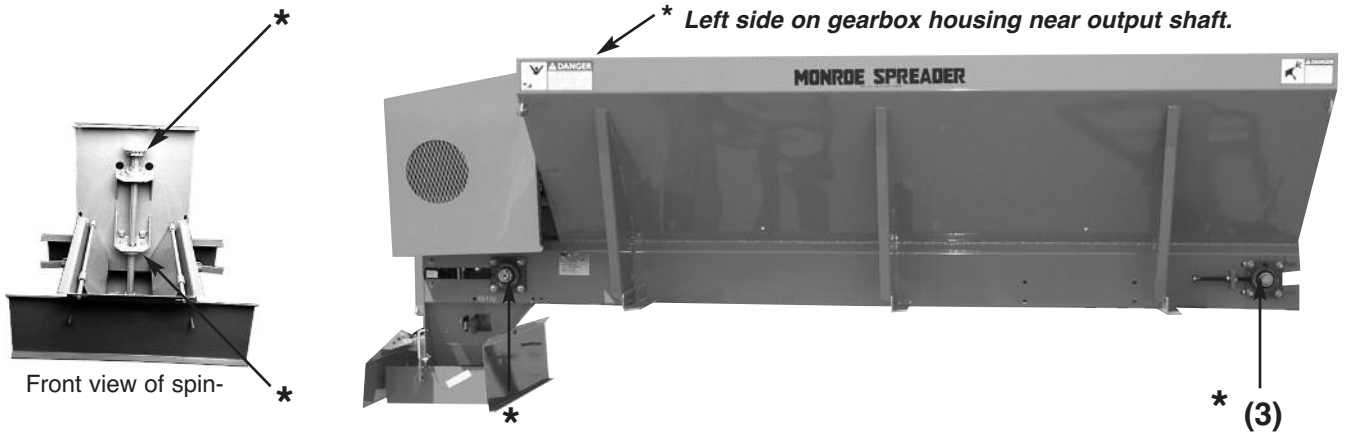
CAUTION CAUTION (*Yellow*) indicates a potentially hazardous situation which, if not avoided, may result in minor or moderate injury.

CAUTION CAUTION (*Yellow*) used without the safety risk alert symbol indicates a potentially hazardous situation which, if not avoided, may result in property damage.

SAFETY INSTRUCTIONS

- Read all installation, safety and maintenance instructions completely before operating this equipment.
- Keep all personnel clear of moving parts while pickup v-box is being operated.
- Wear close fitting clothing and safety equipment appropriate to the job.
- Read and understand the following warning, danger and caution decals attached to this spreader. *(For locations of decals, see [page 2-5](#).)*
- Do not operate a spreader in need of maintenance! Repair immediately!
- While operating this equipment, use common sense, use caution, be alert and be safety-conscious.
- Top grates ***must*** be installed under top grate hold down gussets.
- Turn fuel shut off valve to off position when engine is shut off and/or when the equipment is not in use.

MAINTENANCE INSTRUCTIONS



* Location of grease fittings.

NOTE: STOP ENGINE, REMOVE KEY AND SHUT OFF HYDRAULICS BEFORE SERVICING. NEVER CLEAN, LUBRICATE OR ADJUST WHILE RUNNING.

- Grease idler bearings on idler shaft takeup assembly, outboard bearing on gearbox output shaft, and spinner bearings according to chart on [page 17](#).
- Grease input shaft bearing of gearbox every fifty hours of operation. (Reference [page 59](#) for gearbox parts) **CAUTION:** Over greasing may cause seal damage. The gearbox must be filled to oil level plug with SAE 90 gear-type lubricant. Keep breather plug clean.
- Drag chain slack on V-boxes should be checked periodically and taken up if distance between center line of rear sprocket and point where chain contacts lower flange on longmember is less than eight (8) inches.
- If the spreader is equipped with a gasoline engine, it should be maintained per engine manufacturer's instructions.
- V-belt tension must be maintained. **CAUTION:** Engine must NOT be running. The v-belt tension can be adjusted by loosening engine mounting bolts and sliding engine as required. **CAUTION:** Over tightening of belt may damage gearbox. Retighten engine mounting bolts after belt adjustment is completed.
- Roller chain tension must be maintained. **CAUTION:** Engine and hydraulics MUST be off! It is adjusted by loosening the spinner shaft mounting bracket and sliding the bracket. Make sure the spinner shaft is straight up and down before retightening. Oil the chain often, especially at the end of the season.
- When the box is not in use, it should be washed out. If the box is put in storage, all surfaces should be oiled and the paint touched-up as necessary after washing. NOTE: Do not paint over safety decals.



Service Bulletin

Subject: Need for separate ground wire on slide-in V-boxes

Description:

Slide-in V-boxes with electric motors or gas engines are not provided with a ground wire for electrical circuits connected to the truck battery. These electrical circuits are expected to ground through contact between the V-box body and the truck body.

In actual practice, a ground circuit between the V-box and the OEM chassis through body contact is undependable. Paint, rust, and spray-in bed liners can prevent establishment of a ground circuit back to the truck battery. On a dump body, the hoist and rear hinge may not provide a constant ground circuit. A ground circuit may exist when the installation is new but may be lost over time.

The recommended shop procedure is to connect a ground wire to the V-box body and route this either to the truck battery (best practice) or to a secure ground at the truck frame. The ground wire must include a weatherpack-type connector next to the control harness connector to allow easy removal of the V-box from the truck. A 10-gauge wire is typically sufficient for this ground circuit.

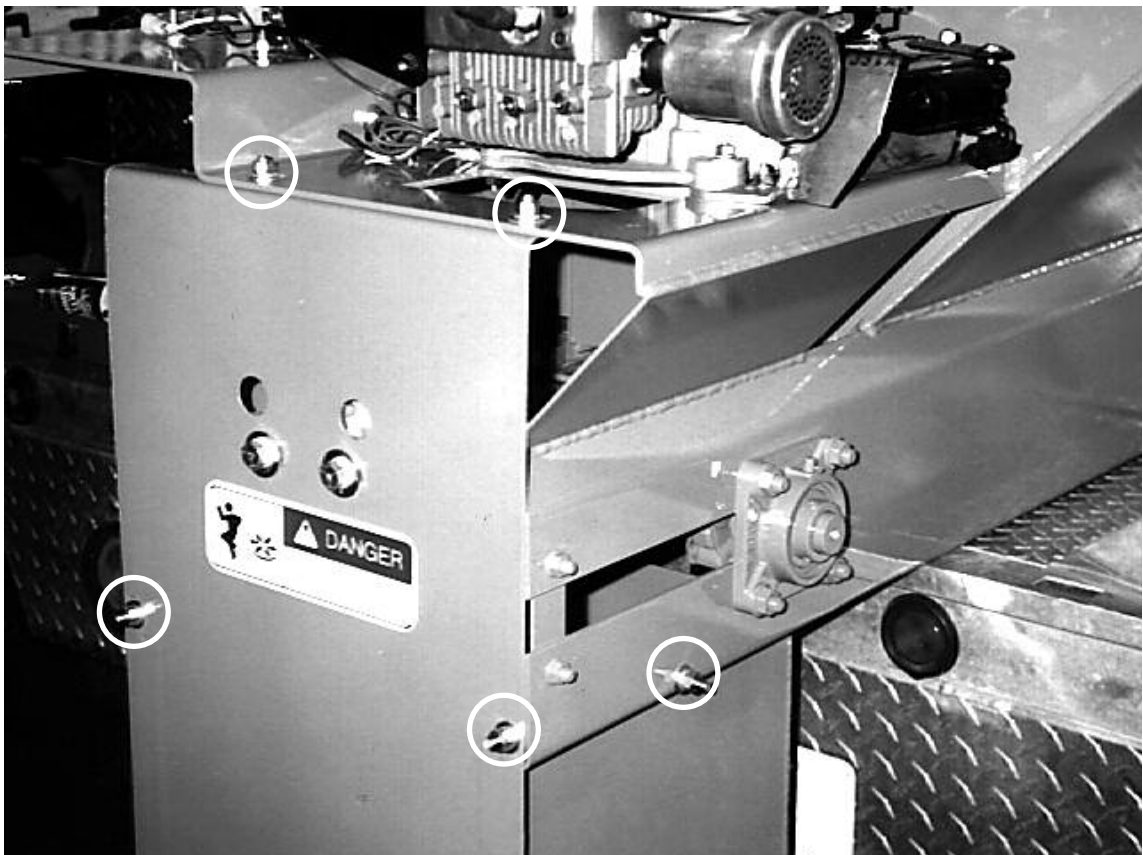
Bulletin #: SB-00207	Release Date: 02/10/10	Revision Date:
-----------------------------	-------------------------------	-----------------------

INSTALLATION INSTRUCTIONS

Installing Spinner Assembly to Spreader:

- Raise spreader to allow ground clearance for spinner assembly installation. Slide spinner assembly into the rear slots of the longmembers. Attach spinner to the longmembers using (2) $\frac{3}{8}$ " x $8\frac{1}{2}$ " L-bolts, (4) $\frac{3}{8}$ " flat washers, (4) $\frac{3}{8}$ " lock washers and (4) $\frac{3}{8}$ " nuts. Bolt top portion of spinner back plate to the engine mounting plate using (2) $\frac{3}{8}$ " x 1" bolts, (4) $\frac{3}{8}$ " flat washers, (2) $\frac{3}{8}$ " lock washers and (2) $\frac{3}{8}$ " nuts. Tighten all (6) nuts at this time. *(All mounting hardware is located in bag inside spreader box.)*
- Install roller chain between gearbox sprocket and spinner sprocket. Align sprockets by loosening allen screw in gearbox sprocket, and adjusting vertically as needed. Adjust chain tightness by loosening (4) bolts of spinner shaft mount and sliding for desired chain tension. Retighten bolts and allen screw. *(Make sure spinner shaft is straight up and down before retightening bolts.)*
- For spinner attaching hardware, see [page 52](#).

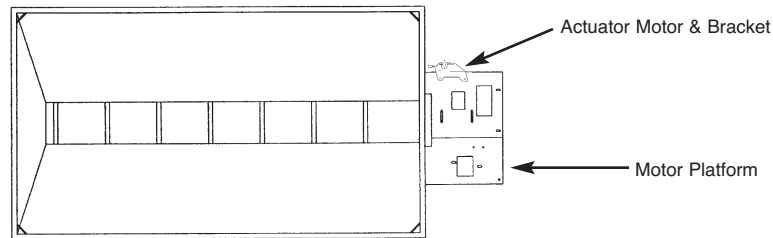
Spinner to spreader fasten points:



INSTALLATION INSTRUCTIONS

Installing Standard Electric Throttle Control: --ACTUATOR--

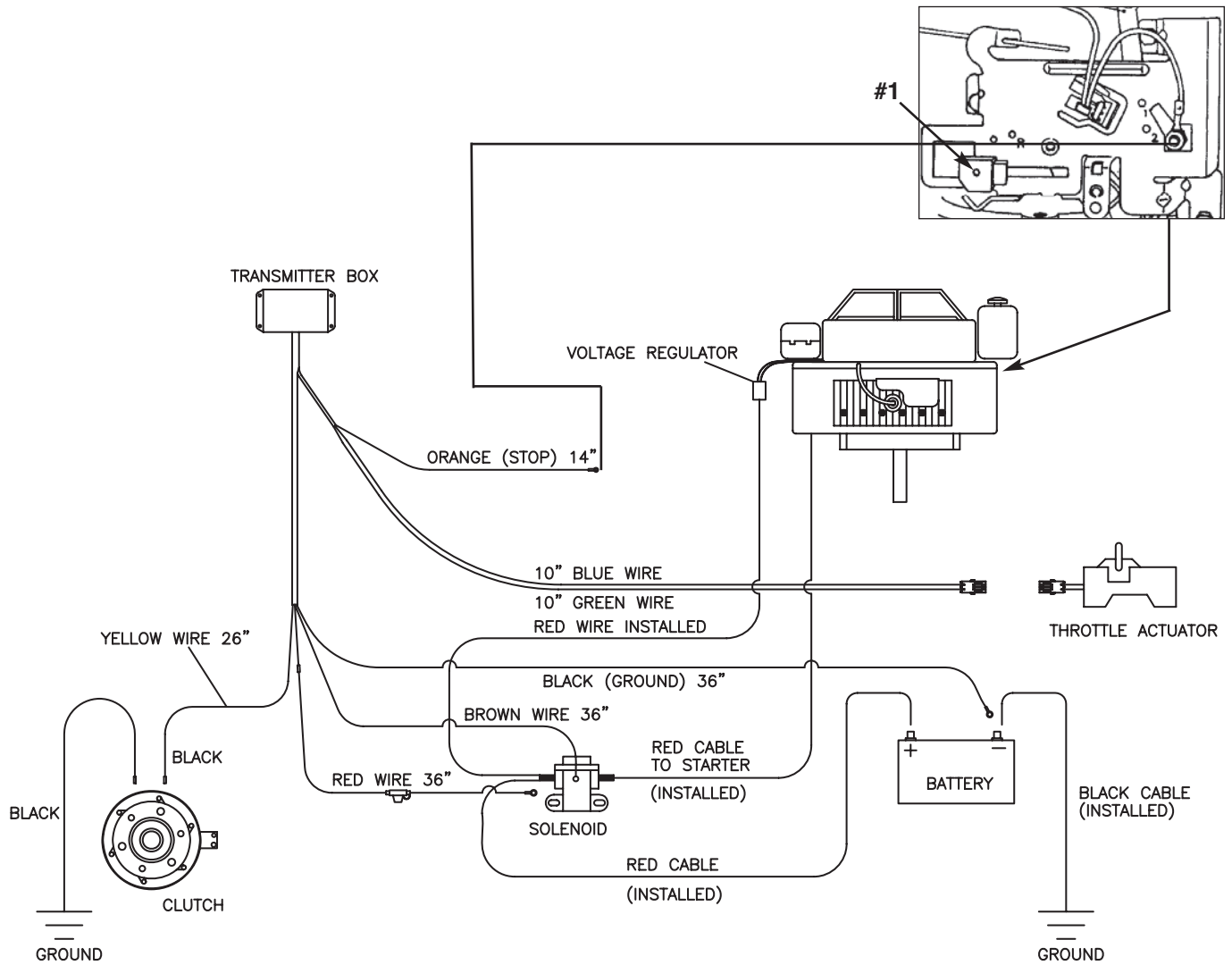
- Bolt the throttle actuator motor to the throttle control bracket using the three #8-32 x 5/8" machine screws, lock washers, and nuts provided. Make sure the throttle actuator arm extends up between the u-shaped slot in the bracket. (Tighten the screws.)
- Install the plastic throttle block with the pin being inserted into the engine throttle slide. (See the following page, reference #1)
- Remove the two right side engine mounting bolts.
- Insert throttle actuator arm pivot pin into the hole on the plastic throttle block and bolt the throttle control bracket to right side of engine mount using the bolts previously removed. (tighten bolts.) Actuator and control bracket should be in position as shown in diagram below.



- Connect the short 4-wire harness to the throttle actuator motor, electric clutch and starter solenoid switch as shown on the following page. Route the harness down to the bottom rear of the spreader, keeping it away from any moving parts or any sharp edges.
- Find a convenient place to install the control panel in the truck cab using the mounting bracket supplied. Attach the gray harness to the truck electrical system by connecting the white wire to ground and the black wire to a good 12 VDC power source.
- Route the long 4-wire harness from the back of the control panel down through the floor and along the frame of the truck to the rear. Be sure to keep the harness away from the exhaust system, moving parts and sharp edges. Connect the two harnesses together at the rear of the truck using the 4-pin Weather Pak connector.
- With all the wires now connected, use the throttle switch to move the actuator arm in both directions. Engine throttle slide should move from the stop position (fully rearward) to the choke position (fully forward) without any binding. Tabs may have to be bent down slightly to achieve full movement. (See the following page, reference #2)
- Visually check the oil and gasoline level in engine. Check all other adjustments such as chain, bearings, belt, pulleys and sprockets for tightness and alignment. Turn on in-line gas valve and make sure all safety shields are in place.
- Fully choke engine and push the starter switch. Once engine has started, bring throttle back to idle or half speed.

INSTALLATION INSTRUCTIONS

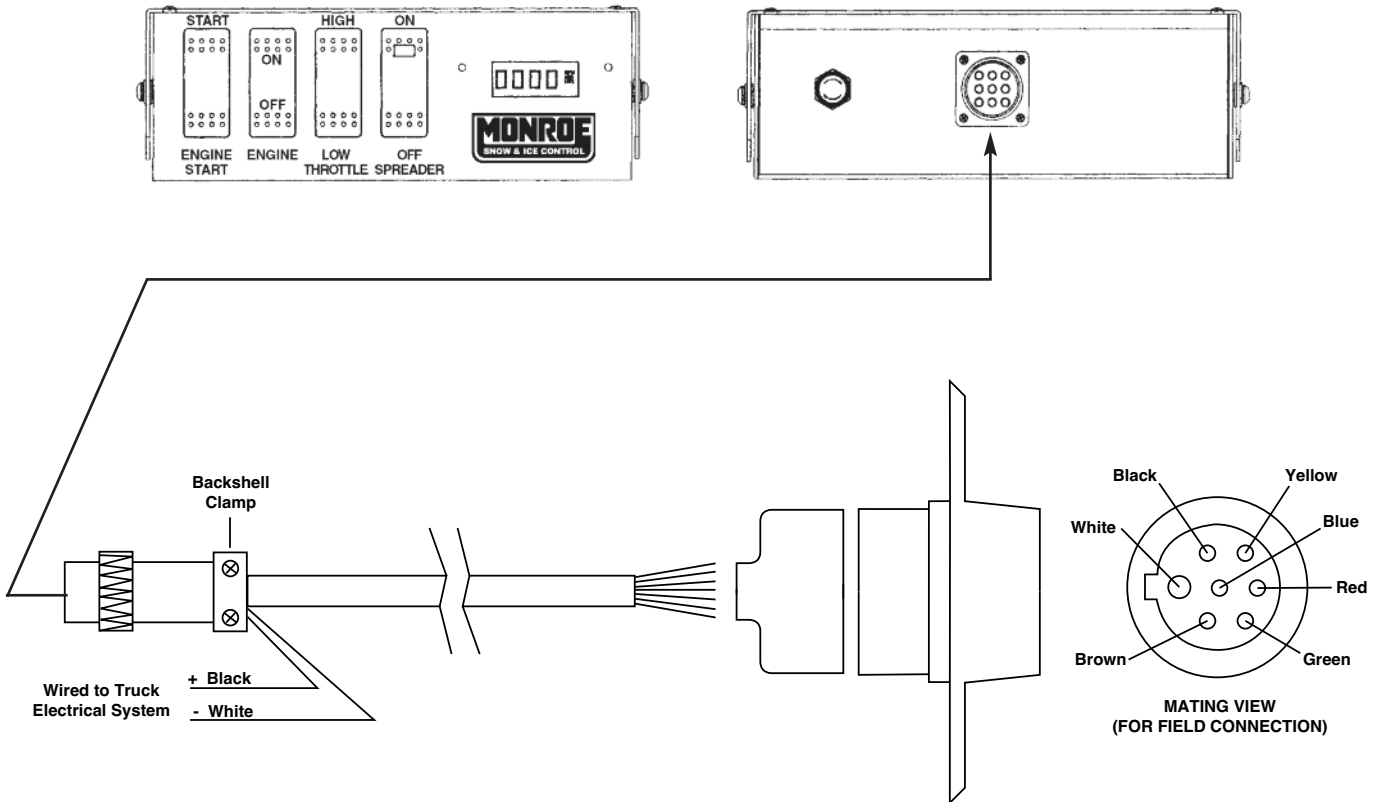
Installing Standard Electric Throttle Control: (Continued)



INSTALLATION INSTRUCTIONS

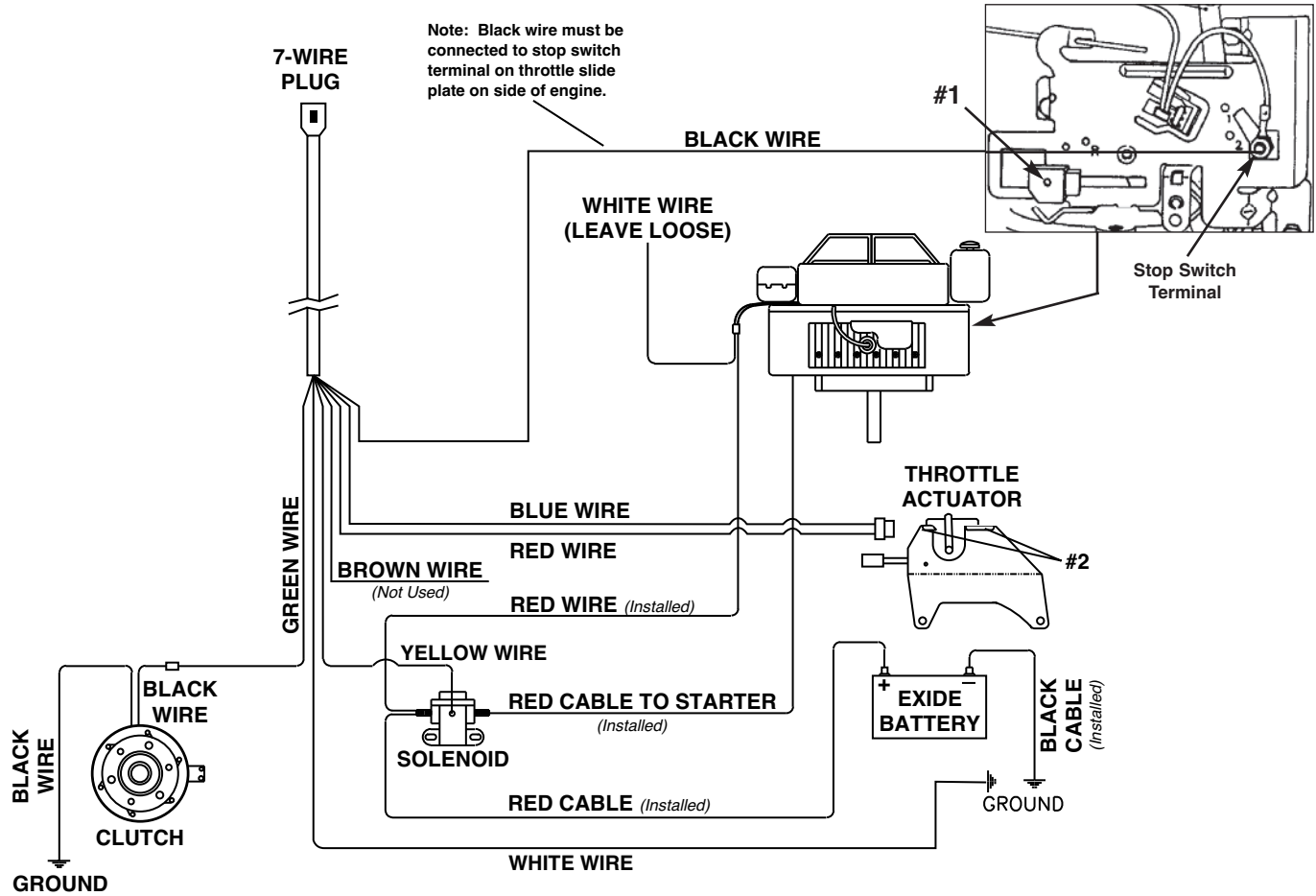
Installing New Style Deluxe Throttle Control: (OPTIONAL)

- Use similar procedure as electric throttle installation (pages 10-11) except use deluxe control panel and 7-wire harness as shown below and on the following page.



INSTALLATION INSTRUCTIONS

Installing New Style Deluxe Throttle Control: (Continued)



INSTALLATION INSTRUCTIONS

Installing the Pickup V-Box Spreader Into Truck Using the *Optional* 00057595 Mounting Kit:

(See page 53 for replacement parts)

- Lift spreader (with spinner attached) onto bed of truck and center. Leave 1" gap between rear bumper and spinner.
- Attach (4) eyebolts in corners of truck sides. Fasten each with (1) $\frac{3}{8}$ " lock nut and (2) $\frac{3}{8}$ " flat washers.
- Attach each of (4) chains to mounting tabs with (1) $\frac{3}{8}$ " x $1\frac{1}{2}$ " bolt, (1) $\frac{3}{8}$ " flat washer, (1) $\frac{3}{8}$ " lock washer and (1) $\frac{3}{8}$ " nut.
- Hook (4) turnbuckles onto eyebolts and hook other end to chains that are bolted to spreader tabs. Tighten turnbuckles so spreader is centered and immovable.

OPERATING INSTRUCTIONS

Operation of electric start:

- All electric start models are supplied with a control panel. If your spreader is an electric start model, look at your control panel. It will have (3) switches mounted on it (the deluxe throttle control panel has 4). The one on the far left is the start switch. The far right switch is the electric clutch control. When the switch is in the "off" position, the electric clutch is disengaged and the conveyor and the spinner will stop. In the "on" position, the conveyor and spinner will operate. The center switch is the throttle. Your engine is equipped with a semiautomatic choke. To activate the choke, push the throttle switch until throttle is at it's fastest position. To remove choke function decrease throttle speed to desired engine RPM.
- Start the engine and engage the clutch. The amount of material spread, depends on engine speed and gate opening. Decreasing engine RPM and/or gate height will decrease amount spread; the inverse holds true also. Notice that the electric clutch can be engaged or disengaged at any time and at any engine RPM. However, since engagement time and torque is almost instantaneous, to prevent premature spinner chain failure and/or chain tension loss, it is recommended that the electric clutch should be engaged at the lowest possible RPM without stalling the engine.
- Spread pattern depends on baffle setting and engine RPM, follow the table below to achieve desired results.
- Slowing the engine down past idle will shut off the engine.

Important: When the engine driven Pickup V-Box is transported with the engine not running, or when the Pickup V-Box will not be used for any significant length of time, the fuel shut-off valve in the fuel line must be closed. **(See page 32.)** This will prevent the possibility of fuel seeping around the float in the carburetor and entering the engine crank case. To "close" the fuel shut-off valve, turn the knob so it is perpendicular to the fuel line, as shown on **page 32**. To "open" the valve for normal operation, turn the knob so it is parallel to the fuel line.




Table Symbols: L.B. = Left Baffle; R.B. = Right Baffle; B.B. = Back Baffle

Position of Baffle(s)	Result
1. L.B. in lowest position and R.B. and B.B. in highest position.	1. Immediate baffling effect to the left. With the effect tapering out to 11 ft. left of center pattern about 10 ft. behind the spinner. The pattern to the right and directly behind the spreader will continue as normal.
2. R.B. in lowest position and B.B. and L.B. in highest position.	2. Same as #1 but has the opposite effect on the right side.
3. R.B. and L.B. in lowest position and B.B. in highest position.	3. Immediate baffling effect is noticed on the right and left side with a gradual increase in pattern width proportional to the distance behind the spreader.
4. R.B. and B.B. in lowest position and L.B. in highest position.	4. Pattern: 2 ft. right of center and 10 - 15 ft. left of center.
5. B.B. and L.B. in lowest position and R.B. in highest position.	5. Pattern: 1 - 2 ft. left of center and 1 - 15 ft. right of center.
NOTE: For immediate baffling to the right or left #4 and #5 work the best.	
6. R.B. and L.B. in highest position and B.B. in lowest position.	6. Material will be dropped directly behind spreader and to both sides equally. There will be very little decrease in effective spread width.

GENERAL INFORMATION

- Location descriptions are noted in direction of travel. (i.e. front, rear, left and right.)
- Delivery of replacement parts is subject to our sales delivery terms.
- Use only **Monroe Truck Equipment** O.E.M. replacement parts. Failure to do so will void warranty.
- Replacement parts listed in this manual reflect our most common PV Spreader items. If you do not find the part you require, please call your distributor.
- **Monroe Truck Equipment** reserves the right to make revisions or alterations to this parts manual.

TORQUE CHART

SIZE	 GRADE 2	 GRADE 5	 GRADE 8
1/4-20	50 IN-LBS	75 IN-LBS	9 FT-LBS
3/8-16	15 FT-LBS	23 FT-LBS	35 FT-LBS
1/2-13	35 FT-LBS	55 FT-LBS	80 FT-LBS
5/8-11	75 FT-LBS	110 FT-LBS	170 FT-LBS
3/4-10	130 FT-LBS	200 FT-LBS	280 FT-LBS
1-8	190 FT-LBS	480 FT-LBS	680 FT-LBS
1 1/4-7	380 FT-LBS	840 FT-LBS	1,360 FT-LBS

LUBRICATION CHART

WARNING: NEVER CLEAN, LUBRICATE OR ADJUST WHILE THE SPREADER IS RUNNING.

LUBRICATION

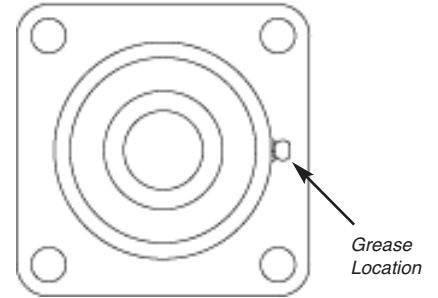
All bearing units are factory prelubricated and, therefore, do not require supplemental grease before service life begins. Relubrication, when administered correctly, can increase the life of a bearing substantially. We recommend the following general guidelines to maximize your bearing life:

RPM	Temperature	Environmental Condition	Interval
100	32°F-120°F	Clean	6-12 months
500	32°F-150°F	Clean	2-6 months
1,000	32°F-210°F	Clean	2 wks to 2 months
1,500	Over 210°F	Clean	Daily to weekly
Any	32°F-150°F	Dirty	Weekly to monthly
Any	Over 150°F	Dirty	Daily to 2 wks
Any	Any Temp.	Very Dirty	Daily to weekly
Any	Any Temp.	Extremely Dirty	Daily to weekly

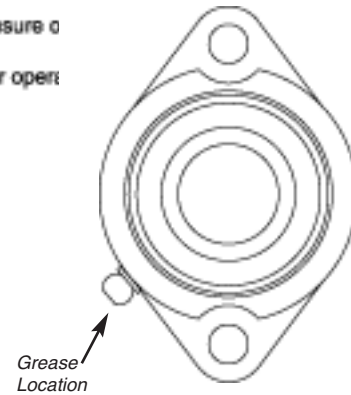
NOTE:

Over lubrication is a major cause of bearing failures. Please relubricate conservatively when unsure of bearing requirements. When selecting a bearing lubricant, your dealer suggest any lithium-based NLGI #2 grease. For oper higher than 210°F, please consult your dealer.

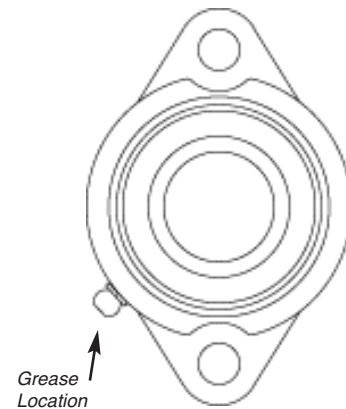
**BEARING, 1.25" 4-BOLT FLANGE
PN: 05030029**



**BEARING, 1" 2-BOLT FLANGE
PN: 05030023**

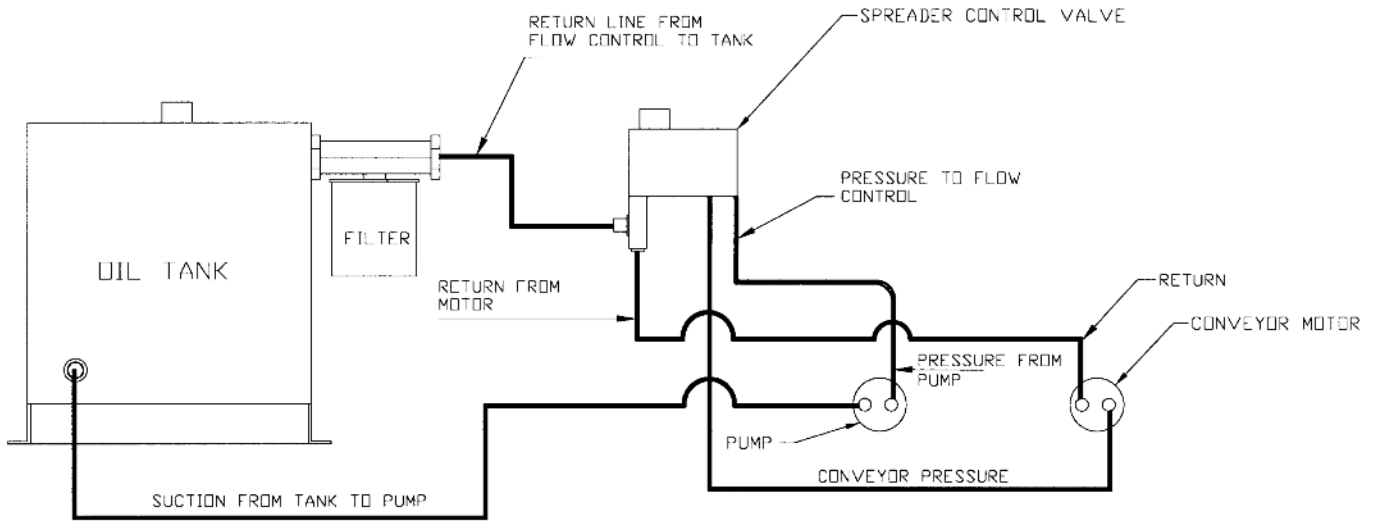


**BEARING, 1.25" 2-BOLT FLANGE
PN: 05030024**



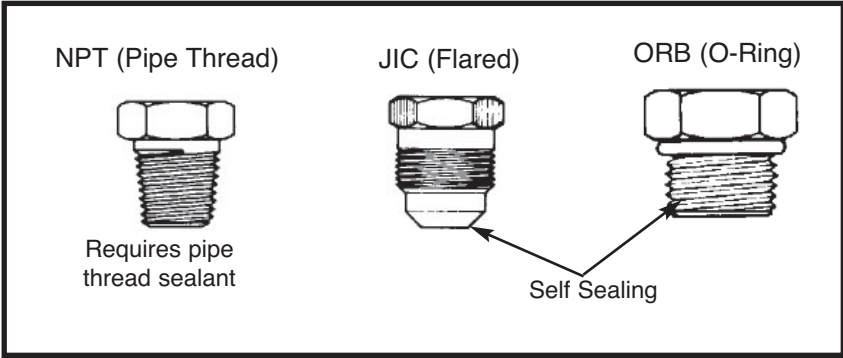
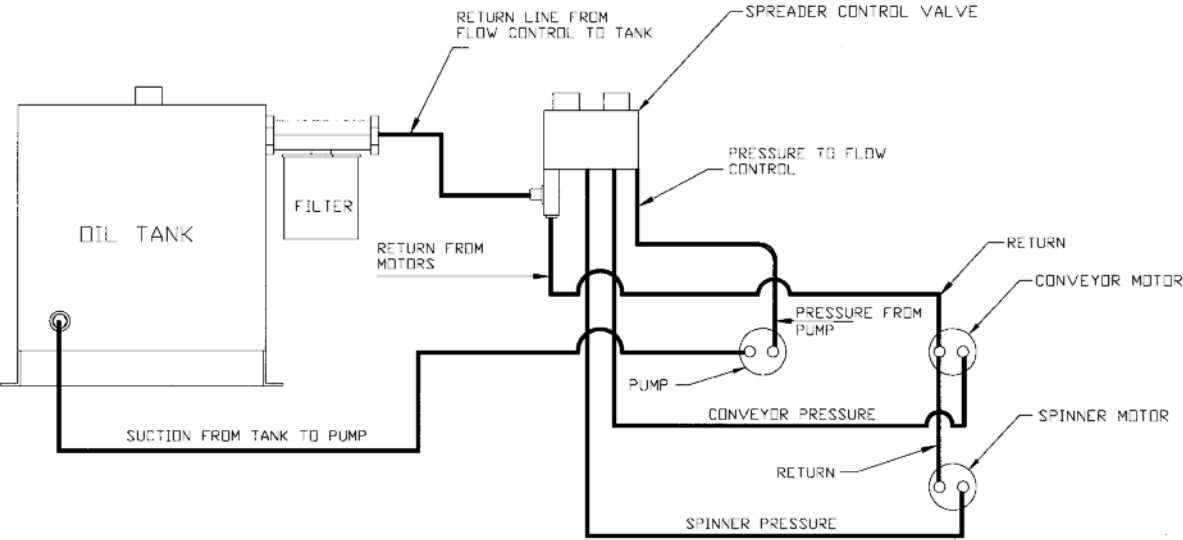
HYDRAULIC SCHEMATICS

One Motor



HYDRAULIC SCHEMATICS

Two Motors



00129394 MSPV-96-50-32, HYD, 2009

Item	Qty	Part Number	Description
1	1	00128360-A 00128360-B 00128360-C	HOPPER WLDMENT, MSPV, 96-50-32, MS, 12GA HOPPER WLDMENT, MSPV, 96-50-32, 304, 12GA HOPPER WLDMENT, MSPV, 96-50-32, AUSST, 12GA <i>See Page 22</i>
2	1	05036017	CHAIN ASSEMBLY, 124 LINKS, 31 FLATS
3	1	00056299-A 00056299-B 00056299-C	MOTOR KIT, MSPV, HYD, MS MOTOR KIT, MSPV, HYD, 304 MOTOR KIT, MSPV, HYD, AUSST <i>See Page 23</i>
4	1	00129395-A 00129395-B 00129395-C	DRIVE KIT, MSPV, HYD, MS DRIVE KIT, MSPV, HYD, 304 DRIVE KIT, MSPV, HYD, AUSST <i>See Page 30-31</i>
5	1	00056267-A 00056267-B 00056267-C	DOOR KIT, MSPV/MD, MS DOOR KIT, MSPV/MD, 304 DOOR KIT, MSPV/MD, AUSST <i>See Page 34</i>
6	1	00128365-A 00128365-B 00128365-C	HOOD KIT, ENGINE, MS HOOD KIT, ENGINE, 304 HOOD KIT, ENGINE, AUSST <i>See Page 35</i>
7	1	00056298-A 00056298-B	DECAL KIT, HYD, MS DECAL KIT, HYD, 304 <i>See Page 36-37</i>
8	1	00091758	CANISTER KIT, MANUAL STORAGE <i>See Page 40</i>
9	1	05050095	TAG, SERIAL NUMBER
10	1	05090431	MANUAL, MSPV, 2009 PARTS & SERVICE

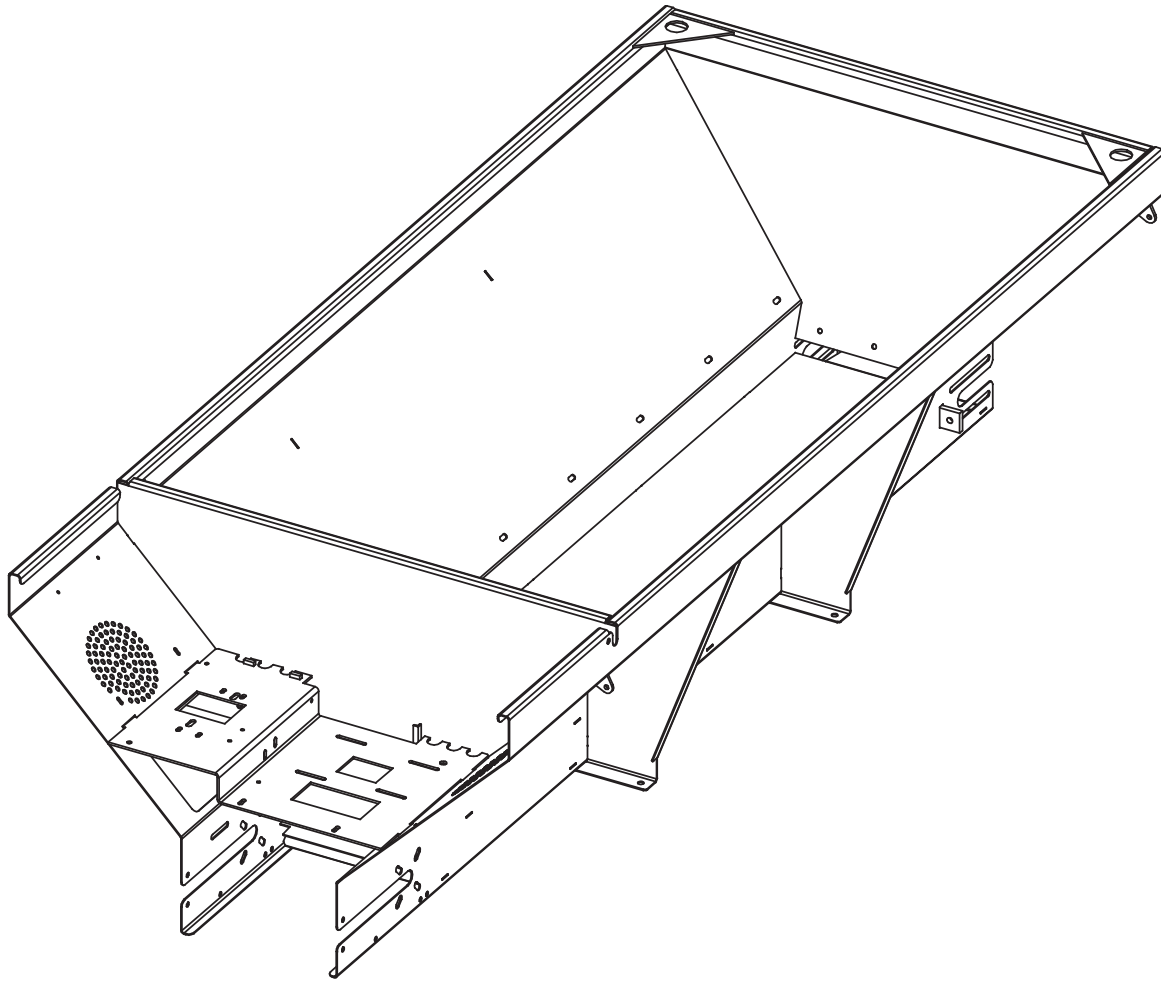
00128366 MSPV-96-50-32, 10.5 BRIGGS, 2009

Item	Qty	Part Number	Description
1	1	00128360-A 00128360-B 00128360-C	HOPPER WLDMENT, MSPV, 96-50-32, MS, 12GA HOPPER WLDMENT, MSPV, 96-50-32, 304, 12GA HOPPER WLDMENT, MSPV, 96-50-32, AUSST, 12GA <i>See Page 22</i>
2	1	05036017	CHAIN ASSEMBLY, 124 LINKS, 31 FLATS
3	1	00056269-A 00056269-B 00056269-D	ENGINE KIT, MSPV/MD, 10.5 BRIGGS, MS ENGINE KIT, MSPV/MD, 10.5 BRIGGS, 304 ENGINE KIT, MSPV/MD, 10.5 BRIGGS, AUSST <i>See Page 24</i>
4	1	00128389-A 00128389-B 00128389-C	DRIVE KIT, MSPV, MS DRIVE KIT, MSPV, 304 DRIVE KIT, MSPV, AUSST <i>See Page 30-31</i>
5	1	00056267-A 00056267-B 00056267-D	DOOR KIT, MSPV/MD, MS DOOR KIT, MSPV/MD, 304 DOOR KIT, MSPV/MD, AUSST <i>See Page 34</i>
6	1	00128365-A 00128365-B 00128365-C	HOOD KIT, ENGINE, MS HOOD KIT, ENGINE, 304 HOOD KIT, ENGINE, AUSST <i>See Page 35</i>
7	1	00056270-A 00056270-B	DECAL KIT, ENGINE, MS DECAL KIT, ENGINE, 304 <i>See Page 36-37</i>
8	1	00091758	CANISTER KIT, MANUAL STORAGE <i>See Page 40</i>
9	1	05050095	TAG, SERIAL NUMBER
10	1	05090431	MANUAL, MSPV, 2009 PARTS & SERVICE

00129396 MSPV-96-50-32, 11.0 HONDA, 2009

Item	Qty	Part Number	Description
1	1	00128360-A 00128360-B 00128360-C	HOPPER WLDMENT, MSPV, 96-50-32, MS, 12GA HOPPER WLDMENT, MSPV, 96-50-32, 304, 12GA HOPPER WLDMENT, MSPV, 96-50-32, AUSST, 12GA <i>See Page 22</i>
2	1	05036017	CHAIN ASSEMBLY, 124 LINKS, 31 FLATS
3	1	00056268-A 00056268-B 00056268-D	ENGINE KIT, MSPV/MD, 11.0 HONDA, MS ENGINE KIT, MSPV/MD, 11.0 HONDA, 304 ENGINE KIT, MSPV/MD, 11.0 HONDA, AUSST <i>See Page 25</i>
4	1	00128389-A 00128389-B 00128389-C	DRIVE KIT, MSPV, MS DRIVE KIT, MSPV, 304 DRIVE KIT, MSPV, AUSST <i>See Page 30-31</i>
5	1	00056267-A 00056267-B 00056267-D	DOOR KIT, MSPV/MD, MS DOOR KIT, MSPV/MD, 304 DOOR KIT, MSPV/MD, AUSST <i>See Page 34</i>
6	1	00128365-A 00128365-B 00128365-C	HOOD KIT, ENGINE, MS HOOD KIT, ENGINE, 304 HOOD KIT, ENGINE, AUSST <i>See Page 35</i>
7	1	00056270-A 00056270-B	DECAL KIT, ENGINE, MS DECAL KIT, ENGINE, 304 <i>See Page 36-37</i>
8	1	00091758	CANISTER KIT, MANUAL STORAGE <i>See Page 40</i>
9	1	05050095	TAG, SERIAL NUMBER
10	1	05090431	MANUAL, MSPV, 2009 PARTS & SERVICE

00128360-A HOPPER WELDMENT, MSPV 96-50-32, MS
00128360-B HOPPER WELDMENT, MSPV 96-50-32, 304
00128360-C HOPPER WELDMENT, MSPV 96-50-32, AUSST



00056299 MOTOR KIT, HYD

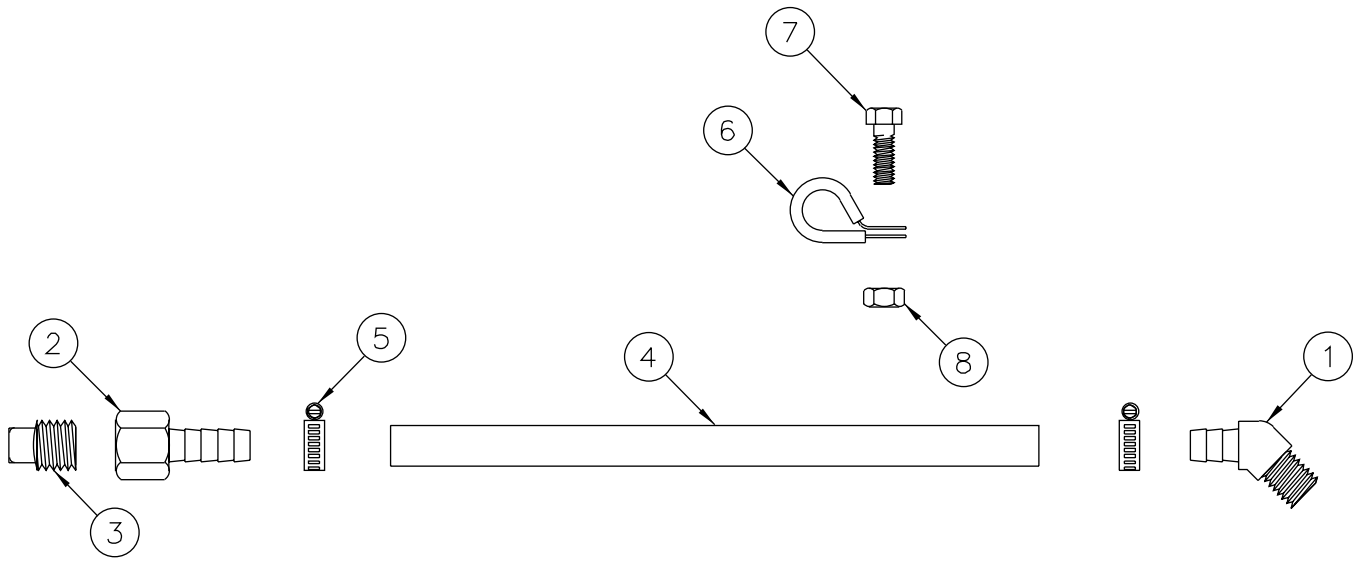
Item	Qty	Part Number	Description
1	1	05006673	MOTOR, HYD, WHITE, 3.2 CI, 4 BOLT, 1" SHAFT <i>See Page 58-59</i>
2	4	05010644 05016049	BOLT, .375-16 X 1.25, G8, HHCS, ZINC BOLT, .375-16 X 1.25, HHCS, SS
3	4	05021365 05021392	WASHER, .375, LOCK, ZINC WASHER, .375, LOCK, SS
4	1	00022310-C 00022310-B 00022310-E	MOUNTING PLATE, MOTOR, SPREADER, TGT, MS, PAINTED MOUNTING PLATE, MOTOR, SPREADER, TGT, 304 MOUNTING PLATE, MOTOR, SPREADER, TGT, AUSST
5	2	05010690 05016045	BOLT, .5-13 X 1.25, G8, HHCS, ZINC BOLT, .5-13 X 1.25, HHCS, SS
6	2	05020609 05020853	NUT, .5-13, G2, SPINLOCK, ZINC NUT, .5-13, SPINLOCK, SS
7	1	05021309 05021391	WASHER, .5, FLAT, ZINC WASHER, .5, FLAT, SS

00056269 ENGINE KIT, MSPV/MD, 10.5 BRIGGS

Item	Qty	Part Number	Description
1	1	05005058	ENGINE, 10.5 HP, B&S, 5 AMP, VR I/C
2	1	05041011	CABLE, BLACK BATTERY, 4GA, 19" OAL
3	1	05041012	CABLE, RED BATTERY, 4GA, 20" OAL
4	2	05051068	ROD, .25-20 X 12, 90° BEND
5	1	05051070	ROD, .3125-18 X 8.5, 90° BEND
6	1	00057449-A 00057449-B 00057449-D	BATTERY STRAP BAR, MSPV, MS BATTERY STRAP BAR, MSPV, 304 BATTERY STRAP BAR, MSPV, AUSST
7	1	00024328	BRACKET, ELECTRIC THROTTLE, NEW STYLE
8	1	00016823	OIL DRAIN KIT, BRIGGS ENG <i>See Page 26</i>
9	1	05041010	CABLE, RED BATTERY, 4GA, 11" OAL
10	1	05041067	SWITCH, SOLENOID, STARTED, 12VDC
11	1	05006656	MOTOR, THROTTLE, 12VDC, NEW STYLE
12	1	05050246	BLOCK, THROTTLE, UHMW W/ PIN
13	1	05010618 05016138	BOLT, .313-18 X 1, G8, HHCS, ZINC BOLT, .313-18 X 1, HHCS, SST
14	3	05010593 05016040	BOLT, .250-20 X 1, G8, HHCS, ZINC BOLT, .250-20 X 1, G8, HHCS, SS
15	3	05010621 05016141	BOLT, .313-18 X 1.75, G8, HHCS, ZINC BOLT, .313-18 X 1.75, HHCS, SS
16	2	05020264 05020844	NUT, .250-20, G8, HEX, ZINC NUT, .250-20, G8, HEX, SS
17	4	05020899 05020906	NUT, .250-20, TOP LOCK, ZINC NUT, .250-20, NYLON LOCK, 316 SS
18	2	05020605 05020904	NUT, .250-20, G2, SPINLOCK, ZINC NUT, .250-20, SPINLOCK, SS
19	7	05020265 05020855	NUT, .313-18, G8, HEX, ZINC NUT, .313-18, HEX, SS
20	2	05021363 05021393	WASHER, .250, LOCK, ZINC WASHER, .250, LOCK, SS
21	8	05021305 05021403	WASHER, .250, FLAT, ZINC WASHER, .250, FLAT, SS
22	5	05021364 05021407	WASHER, .313, LOCK, ZINC WASHER, .313, LOCK, SS
23	11	05021306 05021404	WASHER, .313, FLAT, ZINC WASHER, .313, FLAT, SS

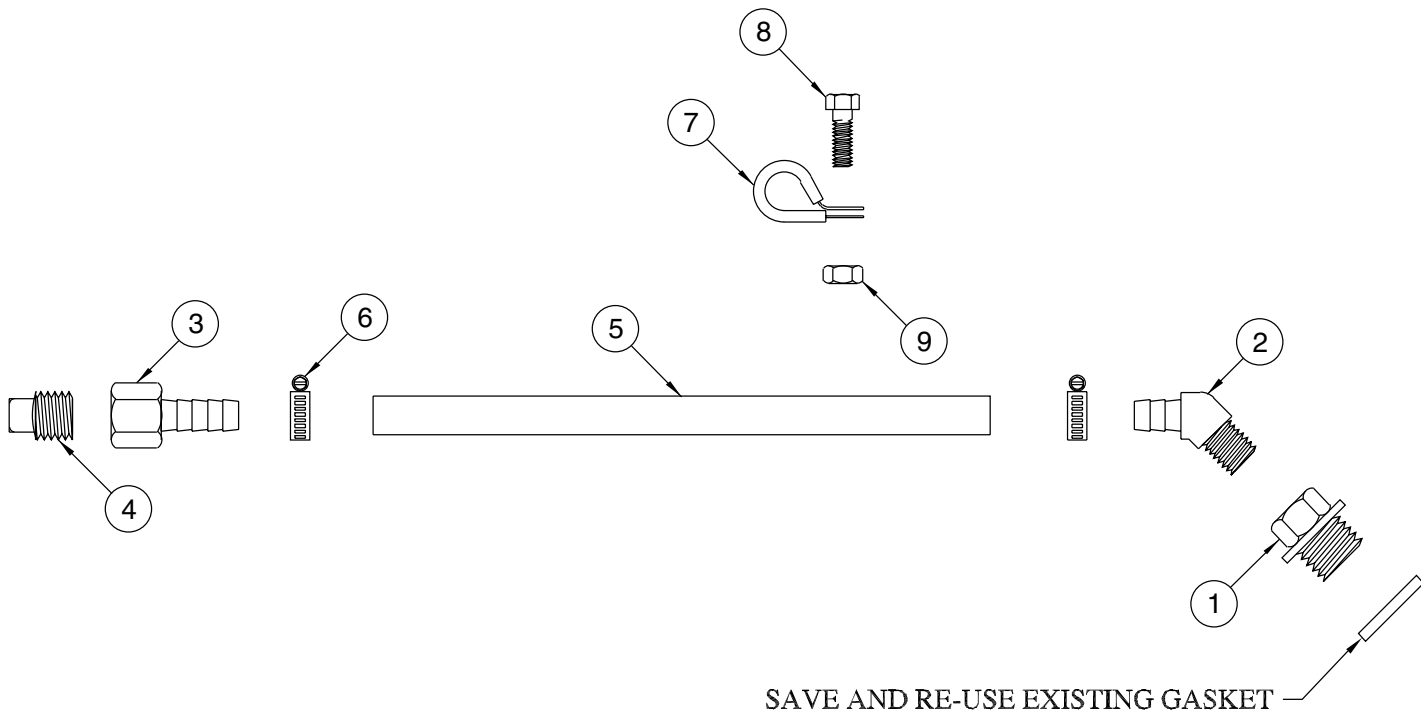
00056268 ENGINE KIT, MSPV/MD, 11.0 HONDA

Item	Qty	Part Number	Description
1	1	05005000	ENGINE, 11HP, HONDA VERTICLE
2	1	05041011	CABLE, BLACK BATTERY, 4GA, 19" OAL
3	1	05041012	CABLE, RED BATTERY, 4 GA, 20" OAL
4	2	05051068	ROD, .25-20 X 12, 90° BEND
5	1	05051070	ROD, .3125-18 X 8.5, 90° BEND
6	1	00057449-A 00057449-B 00057449-C 00057449-D	BATTERY STRAP BAR, MSPV, MS BATTERY STRAP BAR, MSPV, 304 BATTERY STRAP BAR, MSPV, 409 BATTERY STRAP BAR, MSPV, AUSST
7	1	05010618 05016138	BOLT, .313-18 X 1, G8, HHCS, ZINC BOLT, .313-18 X 1, HHCS, SST
8	1	05010593 05016040	BOLT, .250-20 X 1, G8, HHCS, ZINC BOLT, .250-20 X 1, HHCS, SST
9	3	05010621 05016141	BOLT, .313-18 X 1.75, G8, HHCS, ZINC BOLT, .313-18 X 1.75, HHCS, SST
10	4	05020899 05020906	NUT, .250-20, TOP LOCK, ZINC NUT, .250-20, NYLON LOCK, 316 SST
11	2	05020605 05020904	NUT, .250-20, G2, SPINLOCK, ZINC NUT, .250-20, SPINLOCK, SST
12	7	05020265 05020855	NUT, .313-18, G8, HEX, ZINC NUT, .313-18, HEX, SST
13	4	05021305 05021403	WASHER, .250, FLAT, ZINC WASHER, .250, FLAT, SST
14	5	05021364 05021407	WASHER, .313, LOCK, ZINC WASHER, .313, LOCK, SST
15	11	05021306 05021404	WASHER, .313, FLAT, ZINC WASHER, .313, FLAT, SST
16	1	00016578	THROTTLE CONTROL KIT, STD, ELECTRIC, 11.0 HONDA <i>See Page 28</i>
17	1	00016825	OIL DRAIN KIT, MSPV, HONDA ENG <i>See Page 27</i>



00016823 OIL DRAIN KIT, MSPV, BRIGGS, ENG

Item	Qty	Part Number	Description
1	1	05038581	HOSE BARB, .375 X .375 MNPT, 45° BRASS
2	1	05037506	HOSE BARB, .375 X .375 FNPT, BRASS
3	REF	05038092	PLUG, 3/8" NPT, BLACK PIPE
4	1.33 FT	05037507	HOSE, FUEL LINE, .375 ID X 16 LONG
5	2	05037282	CLAMP, HOSE, .5, SST
6	1	05051786	CLAMP, .5, CUSHIONED METAL
7	1	05010591	BOLT, .25-20 X .75, G8, HHCS, ZINC
8	1	05020605	NUT, .25-20, G5, SPINLOCK, ZINC



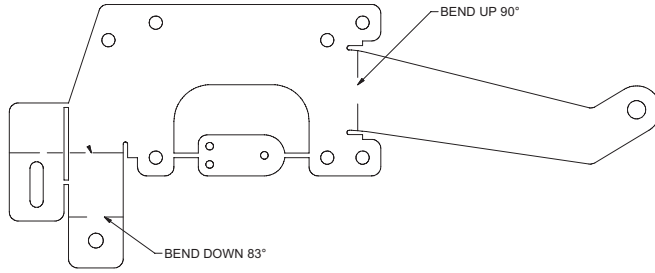
00016825 OIL DRAIN KIT, MSPV, HONDA ENG

Item	Qty	Part Number	Description
1	1	00016824	PLUG, OIL DRAIN, MSPV, MODIFIED
2	1	05038580	HOSE BARB, 3/8" X 1/4" MNPT, 45° BRASS
3	1	05037506	HOSE BARB, 3/8" X 3/8" FNPT, BRASS
4	1	05038092	PLUG, 3/8" NPT, BLACK PIPE
5	1.33 FT	05037507	HOSE, FUEL LINE, 3/8" ID X 16" LONG
6	2	05037282	CLAMP, HOSE, 1/2" SST
7	1	05051786	CLAMP, 5/8" ID, CUSHIONED METAL
8	1	05010591	BOLT, .25-20 X .75, G8, HHCS, ZINC
9	1	05020605	NUT, .25-20, G5, SPINLOCK, ZINC

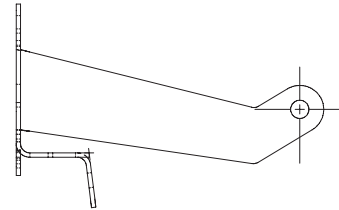
00016578 THROTTLE CONTROL KIT, STD, ELEC, 11.0 HONDA

Item	Qty	Part Number	Description
1	1	05006685	THROTTLE MOTOR, MSPV, 12V DC
2	1	00071385	LINKAGE, ELECT THROTTLE, BOSH
3	1	0IBH	PIN, COTTER, 1/16 X 3/4 ZINC
4	1	00129789	BRACKET ASSEMBLY, CONTROL THROTTLE, ELECTRIC
5	3	05016949	SCREW, #6-32 X .625 SL, RD HD
6	3	05021411	WASHER, #6 LOCK, SST
7	3	05020966	NUT, #6-32, HEX, SST
8	1	05021413	WASHER, #10, FLAT, 18-8 SS
9	2	05041356	CABLE SEAL, GREEN, PACKARD WEATHER
10	2	05041354	TERMINAL, MALE, PACKARD WEATHER
11	1	05041353	CONNECTOR, 2 TERM, SHROUD HALF

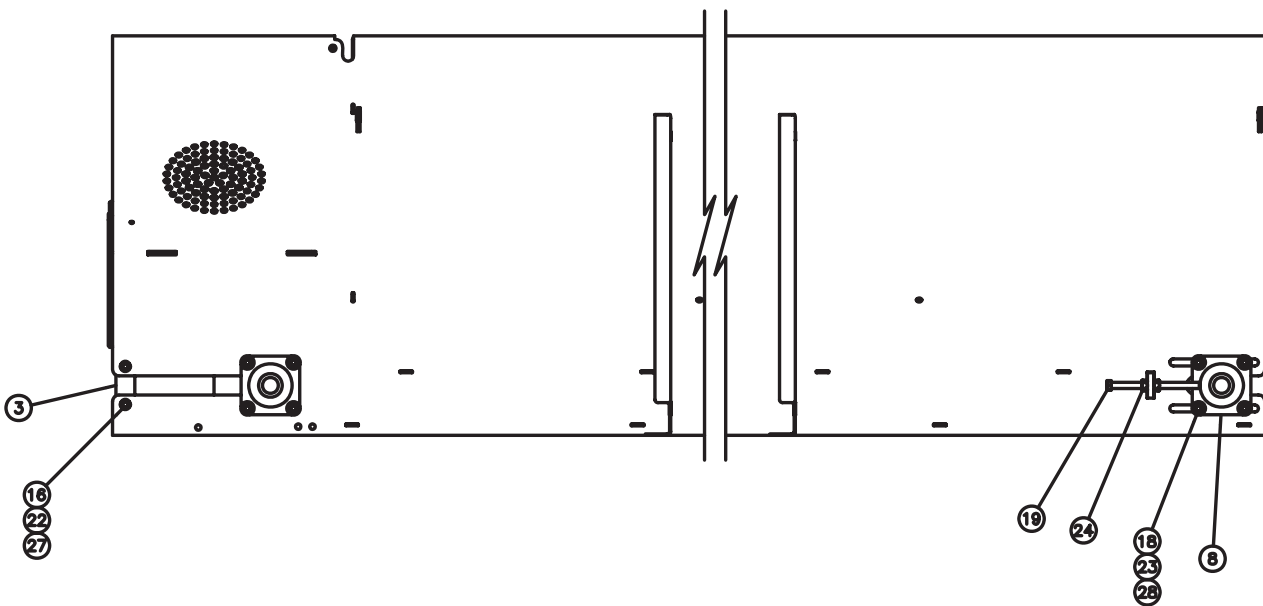
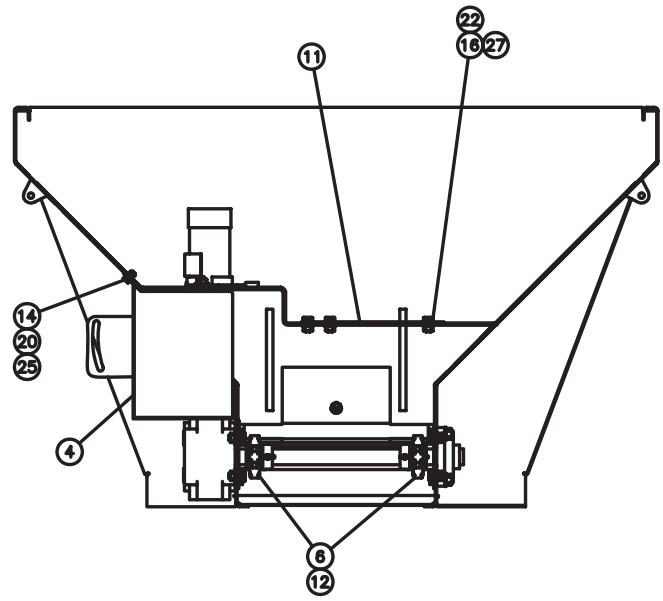
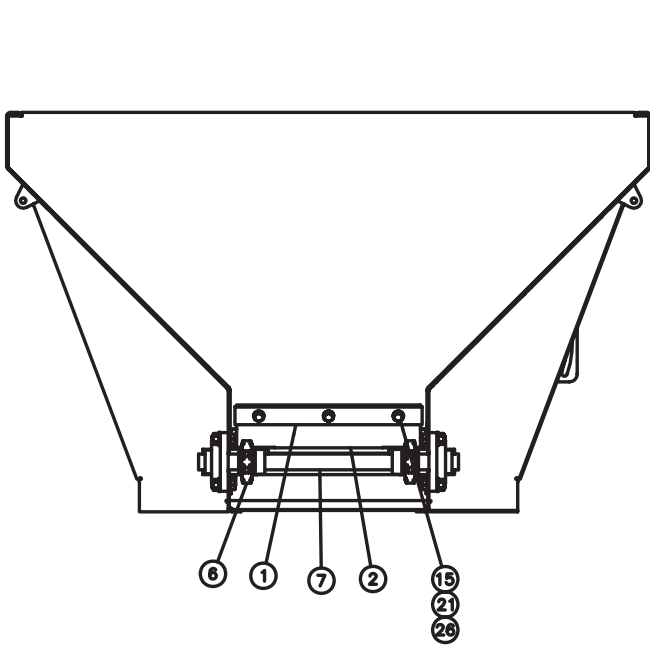
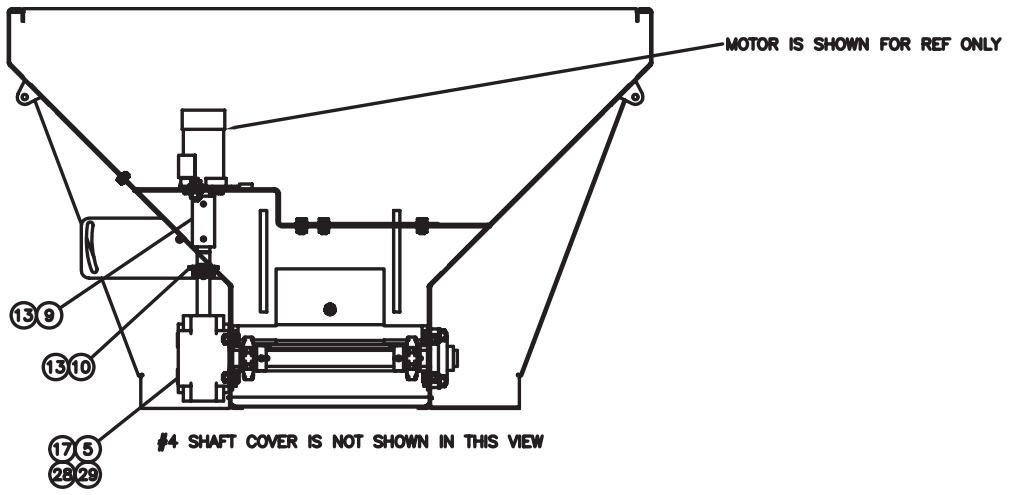
00129789 BRACKET, CONTROL, THROTTLE



FLAT PATTERN

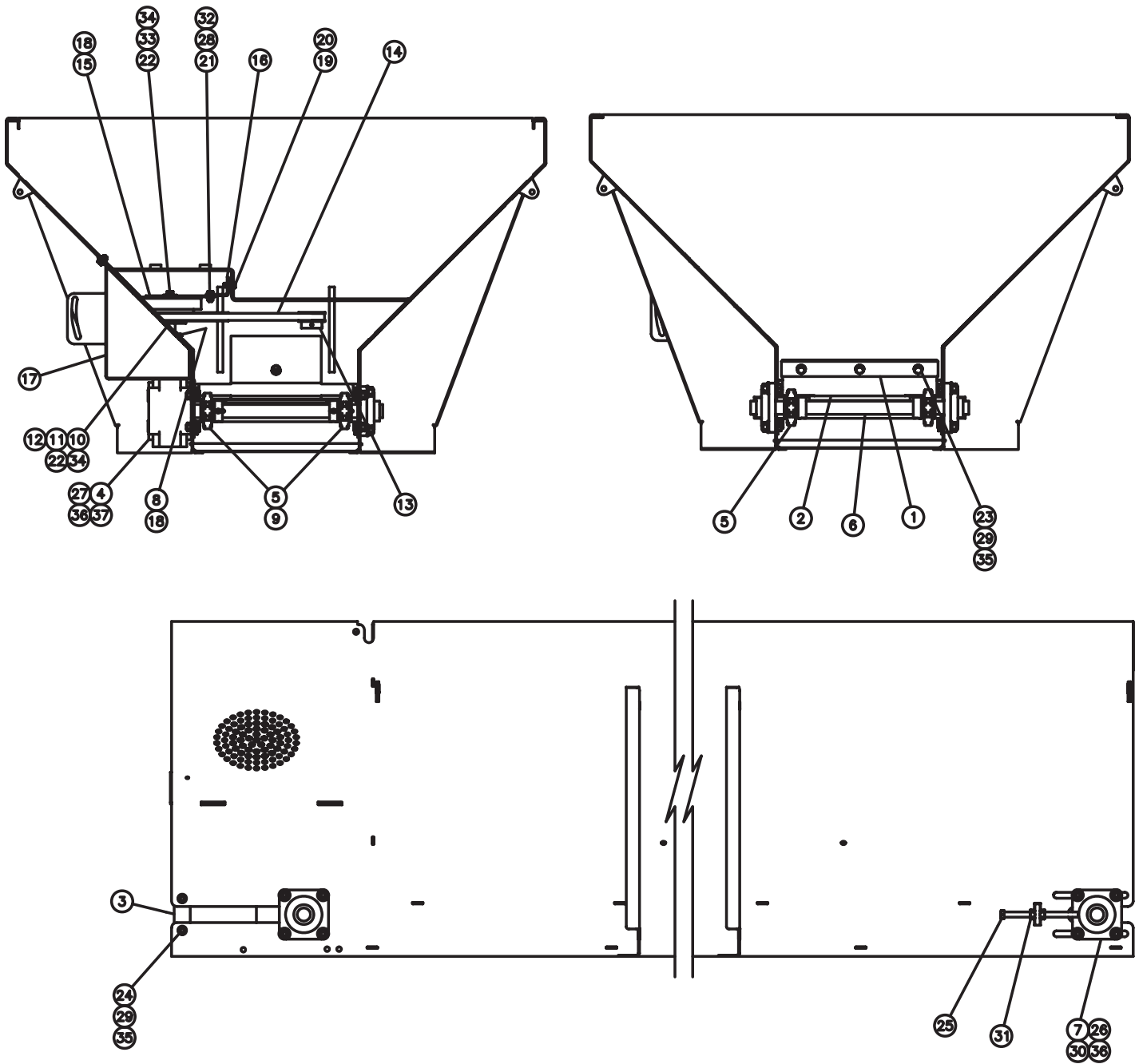


BEND DETAIL



00129395 DRIVE KIT, HYD

Item	Qty	Part Number	Description
1	1	00053253-A 00053253-B 00053253-F	SUPPORT, WIPER, SPINNER, MS SUPPORT, WIPER, SPINNER, 304 SUPPORT, WIPER, SPINNER, AUSST
2	1	00128388	WIPER, MSPV, FRONT
3	2	00057409 00057410-A 00057410-C	STIFFENER PLATE, MS, 10GA, MS STIFFENER PLATE, MS, 12GA, 304 STIFFENER PLATE, MS, 12GA, AUSST
4	1	00129397-A 00129397-B 00129397-C	COVER WELDMENT, SPINNER SFT, MSPV, HYD, MS COVER WELDMENT, SPINNER SFT, MSPV, HYD, 304 COVER WELDMENT, SPINNER SFT, MSPV, HYD, AUSST
5	1	05007337	GEARBOX, 20:1, 1.25" SFT DIA, 18" <i>See Page 56-57</i>
6	3	05033024	SPROCKET, 6T, 662, 1.25" BORE
7	1	00057415	SHAFT WELDMENT, IDLER, 1.25, 1 SPROCKET
8	3	05030029	BEARING, 1.25" 4B FLANGE, MSPV/MS969
9	1	05051201	COUPLER, SHAFT, 1" X 4", SPREADERS
10	1	05033006	SPROCKET, 41B13FX, 1" BORE, .25" KW
11	1	00128398-A 00128398-B	SAFETY PLATE, HYD DRIVE, MSPV 2009, MS SAFETY PLATE, HYD DRIVE, MSPV 2009, 304
12	2	05050121	KEY, SQ, .25 X .25 X 1.5, 04031-008-00, MSPV, TGT
13	2	05051284	KEY, WOODRUFF, .25 X .875, 04009-001-03
14	2	05010591 05016113	BOLT, .250-20 X .75, G8, HHCS, ZINC BOLT, .250-20 X .75, HHCS, SST
15	2	05010618 05016138	BOLT, .313-18 X 1, G8, HHCS, ZINC BOLT, .313-18 X 1, HHCS, SST
16	8	05010642 05016050	BOLT, .375-16 X .875, G8, HHCS, ZINC BOLT, .375-16 X .875, HHCS, SST
17	4	05010689 05056047	BOLT, .5-13 X 1, G8, HHCS, ZINC BOLT, .5-13 X 1, HHCS, SST
18	12	05010691 05016096	BOLT, .5-13 X 1.50, G8, HHCS, ZINC BOLT, .5-13 X 1.5, HHCS, SST
19	2	05016106	BOLT, .5-13 X 7, W/ 6.5 THREAD, ZINC
20	2	05020899 05020906	NUT, .250-20, TOP LOCK, ZINC NUT, .250-20, NYLON LOCK, 316 SS
21	2	05020909 05020907	NUT, .313-18, GC, TOP LOCK, C&W NUT, .313-18, GC, NYLON LOCK, 316 SS
22	8	05020898 05020891	NUT, .375-16, GC, TOP LOCK, C&W NUT, .375-16, GC, NYLON LOCK, 316 SS
23	12	05020847 05020908	NUT, .5-13, GC, TOP LOCK, C&W NUT, .5-13, GC, NYLON LOCK, 316 SS
24	4	05020268 05020268	NUT, .5-13, G8, HEX, ZINC NUT, .5-13, G8, HEX, ZINC
25	4	05021305 05021403	WASHER, .250, FLAT, ZINC WASHER, .250, FLAT, SS
26	4	05021306 05021404	WASHER, .313, FLAT, ZINC WASHER, .313, FLAT, SS
27	16	05021307 05021390	WASHER, .375, FLAT, ZINC WASHER, .375, FLAT, SAE, SS
28	28	05021005 05021391	WASHER, .5, FLAT, MIL-CARB, SAE, ZINC WASHER, .5, FLAT, SS
29	4	05021367 05021396	WASHER, .5, LOCK, ZINC WASHER, .5, LOCK, SS



00128389 DRIVE KIT, MSPV, 2009

Item	Qty	Part Number	Description
1	1	00053253-A 00053253-B 00053253-C	SUPPORT, WIPER, SPINNER, MS, 10GA SUPPORT, WIPER, SPINNER, 304 SUPPORT, WIPER, SPINNER, AUSST
2	1	00128388	WIPER, MSPV, FRONT
3	2	00057409 00057410-A 00057410-C	STIFFENER PLATE, MSPV, MS STIFFENER PLATE, MSPV, 304 STIFFENER PLATE, MSPV, AUSST
4	1	05007337	GEARBOX, 20:1, 1.25 SFT DIA X 18 LONG <i>See Page 56-57</i>
5	3	05033024	SPROCKET, 6T, 662, 1.25 BORE, .25 KW
6	1	00057415	SHAFT WELDMENT, IDLER, 1.25, 1 SPRKT
7	3	05030029	BEARING, 1.25, 4B FLANGE

CONTINUED (00128389)

Item	Qty	Part Number	Description
8	1	05033006	SPROCKET, 41B13FX, 1.0 BORE, .25KW
9	2	05050121	KEY, SQ, .25 X .25 X 1.5
10	1	05051283	SNAP RING, 1", .940 ID
11	1	05051823	BUSHING, MACH, 1 X 2, 18 GA, ZINC
12	1	05034003	PULLY, 11.0 OD, 3.016 CTR HOLE, TRI-BLT MTG
13	1	05034007	PULLY, V-BELT, 1" ID X 2.5 OD, W/ .25 KW
14	1	05051329	V-BELT, CLUTCH, MSPV, .625
15	1	00069497	CLUTCH ASSEMBLY, 12V DC
16	1	00057446-A 00057446-B	BRACKET, CLUTCH RETAINING, MS, MS BRACKET, CLUTCH RETAINING, 304
17	1	00128362-A 00128362-B	COVER WELDMENT, PULLY, MS COVER WELDMENT, PULLY, 304
18	2	05051284	KEY, WOODRUFF, .25 X .875
19	1	05022021	PIN, .125 X 1, COTTER
20	1	05022213	PIN, .375 X 1, CLEVIS, ZINC
21	4	05010591 05016113	BOLT, .250-20 X .75, G8, HHCS, ZINC BOLT, .250-20 X .75, HHCS, SST
22	4	05010616 05016136	BOLT, .312-18 X .750, G8, HHCS, ZINC BOLT, .312-18 X .750, HHCS, SST
23	3	05010644 05016049	BOLT, .375-16 X 1.25, G8, HHCS, ZINC BOLT, .375-16 X 1.25, HHCS, SS
24	4	05010642 05016050	BOLT, .375-16 X .875, G8, HHCS, ZINC BOLT, .375-16 X .875, HHCS, SS
25	2	05016106	BOLT, .5-13 X 7, W/ 6.5 THREAD ZINC
26	12	05010691 05016096	BOLT, .5-13 X 1.50, G8, HHCS, ZINC BOLT, .5-13 X 1.50, HHCS, SS
27	4	05010689 05016047	BOLT, .5-13 X 1, G8, HHCS, ZINC BOLT, .5-13 X 1, HHCS, SS
28	4	05020899 05020906	NUT, .250-20, GC, TOP LOCK, C&W NUT, .250-20, NYLON LOCK, 316 SST
29	7	05020898 05020891	NUT, .375-16, GC, TOP LOCK, C&W NUT, .375-16, NYLON LOCK, 316 SST
30	12	05020847 05020908	NUT, .5-13, GC, TOP LOCK, C&W NUT, .5-13, NYLON LOCK, 316 SST
31	4	05020268	NUT, .5-13, G8, HEX, ZINC
32	8	05021305 05021403	WASHER, .250, FLAT, ZINC WASHER, .250, FLAT, SST
33	1	05021160 05021412	WASHER, .313 X 1.25 FENDER WASHER, .313 X 1.50 FENDER, SS
34	4	05021364 05021407	WASHER, .313, LOCK, ZINC WASHER, .313, LOCK, SST
35	14	05021307 05021390	WASHER, .375, FLAT, ZINC WASHER, .313, LOCK, SST
36	28	05021005 05021391	WASHER, .5, FLAT, SAE, MILCARB, ZINC WASHER, .5, FLAT, SST
37	4	05021367 05021396	WASHER, .5, LOCK, ZINC WASHER, .5, LOCK, SST
38	.25	05051390	RUST PROOFER, HEAVY DUTY

00056267 DOOR KIT, MSPV/MD

Item	Qty	Part Number	Description
1	1	00057172-A 00057172-B 00057172-C 00057172-D	DOOR WELDMENT, REAR SLIDING, MS DOOR WELDMENT, REAR SLIDING, 304 DOOR WELDMENT, REAR SLIDING, 409 DOOR WELDMENT, REAR SLIDING, AUSST
2	1	00042790 00042791	HANDLE WELDMENT, DOOR, REAR, MS HANDLE WELDMENT, DOOR, REAR, 304
3	1	05020841	NUT, .375-16 X .938 X 4.25, HANDLE
4	2	05020898 05020891	NUT, .375-16, GC, TOP LOCK, C&W NUT, .375-16, NYLON LOCK, SS

00128365 HOOD KIT, ENGINE, MSPV, 2009

Item	Qty	Part Number	Description
1	1	00128361-A 00128361-B 00128361-C	HOOD, MOTOR, MSPV, 12GA, MS HOOD, MOTOR, MSPV, 12GA, 304 HOOD, MOTOR, MSPV, 12GA, AUSST
2	1	00057247	ROD HOOD, 17.5" LG, CARBON STEEL
3	1	05020851	NUT, .375-16 ACORN ZINC
4	1	05050313	CLIP, HOLDER, MSPV ROD HOOD
5	1	05016941	SCREW, #10-24 X .5 PH RDHD SS
6	1	05020964	NUT, #10-24, NYLON LOCK, 316 SS, WAXED
7	2	00058697	WASHER, POLY
8	2	05022157	PIN, .5 X 1, CLEVIS, SS
9	2	05022208	PIN, COTTER, 3/32" X 1"
10	1	00140986	SEAL, MSPV, ENGINE COVER
11	6	05010644 05016049	BOLT, .375-16 X 1.25, G8, HHCS, ZINC BOLT, .375-16 X 1.25 HHCS, SST
12	6	05021307 05021390	WASHER, .375, FLAT, ZINC WASHER, .375, FLAT, SST
13	6	05020898 05020891	NUT, .375-16, GC, TOP LOCK, C&W NUT, .375-16, NYLON LOCK, 316 SST

MONROE SPREADER

Monroe, Wisconsin 53566

ITEM #1

! CAUTION

1. Keep all guards/shields in place.
2. Make certain everyone is clear of machine before starting engine or operation.
3. Keep hands, feet and clothing away from power driven parts.
4. Disengage PTO, shut off hydraulic valve and set parking brake before leaving operator's position. Make sure all movement has stopped before servicing or unclogging machine.
5. Make sure machine is solidly supported when it is being mounted, dismantled or stored.
6. Use flashing lights when operating machine.

IF DEFACED - ORDER PART NO. 05051404

ITEM #2

! DANGER

Moving conveyor!

- Disconnect and lockout power before servicing, adjusting or cleaning.
- Keep hands, feet, hair and loose clothing away from moving parts at all times
- Never remove or modify guards or shields

Failure to heed will result in ~~injury~~ injury or death.

IF DEFACED - ORDER PART NO. 05052309

ITEM #3

! WARNING

Flying debris. Stay clear and wear eye protection. Failure to heed will result in serious injury.

IF DEFACED - ORDER PART NO. 05051407

ITEM #4

! CAUTION

Use care when mounting or dismounting.

IF DEFACED-ORDER PART NO. 05051409

ITEM #5

! DANGER

Moving conveyor/auger!

- Disconnect and lockout power before servicing, adjusting or cleaning.
- Keep hands, feet, hair and loose clothing away from moving parts at all times
- Never remove or modify guards or shields

Failure to heed will result in ~~injury~~ injury or death.

IF DEFACED - ORDER PART NO. 05051511

ITEM #6

! DANGER

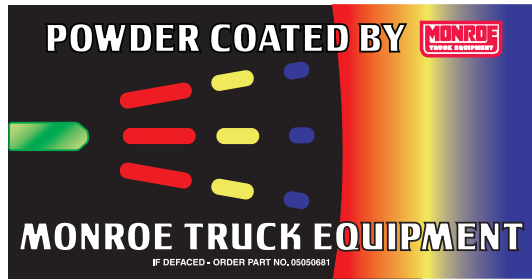
Moving conveyor/auger!

- Disconnect and lockout power before servicing, adjusting or cleaning.
- Keep hands, feet, hair and loose clothing away from moving parts at all times
- Never remove or modify guards or shields

Failure to heed will result in ~~injury~~ injury or death.

IF DEFACED - ORDER PART NO. 05051406

ITEM #7



ITEM #11



ITEM #8



ITEM #9



QUALITY CHECK

Inspected by:

05052311

ITEM #10

00056298 DECAL KIT, MSPV/MD, HYD			
Item	Qty	Part Number	Description
1	2	05051405	DECAL, MONROE SPREADER
2	1	05051404	DECAL - CAUTION, #1-#6
3	2	05052309	DECAL - DANGER: MOVING CONVEYOR
4	1	05051407	DECAL - WARNING: STAY CLEAR. WEAR
5	1	05051409	DECAL - CAUTION: USE CARE WHEN...
6	1	05051511	DECAL, DANGER: TURN POWER OFF...
7	2	05051406	DECAL - DANGER: TURN POWER OFF...
8	1	05052310	DECAL - DANGER: KEEP GUARDS IN
9	3	05051625	DECAL - MONROE SNOW & ICE CONTROL
10	1	05052311	DECAL - QUALITY CHECK, 3" X 4" WHITE
11	1	05050681	DECAL, BONDED POWDER COAT <i>(USED ON MILD STEEL UNITS)</i>

MONROE SPREADER

Monroe, Wisconsin 53566

ITEM #1

! CAUTION

1. Keep all guards/shields in place.
2. Make certain everyone is clear of machine before starting engine or operation.
3. Keep hands, feet and clothing away from power driven parts.
4. Disengage PTO, shut off hydraulic valve and set parking brake before leaving operator's position. Make sure all movement has stopped before servicing or unclogging machine.
5. Make sure machine is solidly supported when it is being mounted, dismantled or stored.
6. Use flashing lights when operating machine.

IF DEFACED - ORDER PART NO. 05051404

ITEM #2

! DANGER

Moving conveyor!


- Disconnect and lockout power before servicing, adjusting or cleaning.
- Keep hands, feet, hair and loose clothing away from moving parts at all times
- Never remove or modify guards or shields

Failure to heed will result in ~~injury~~ injury or death.

IF DEFACED - ORDER PART NO. 05052309

ITEM #4

! WARNING



**Flying debris.
Stay clear and wear eye protection.
Failure to heed will result in serious injury.**

IF DEFACED - ORDER PART NO. 05051407

ITEM #5

! CAUTION



Use care when mounting or dismounting.

IF DEFACED-ORDER PART NO. 05051409

ITEM #6

! DANGER

Moving conveyor/auger!

- Disconnect and lockout power before servicing, adjusting or cleaning.
- Keep hands, feet, hair and loose clothing away from moving parts at all times
- Never remove or modify guards or shields

Failure to heed will result in ~~injury~~ injury or death.

IF DEFACED - ORDER PART NO. 05051511

ITEM #7

! DANGER

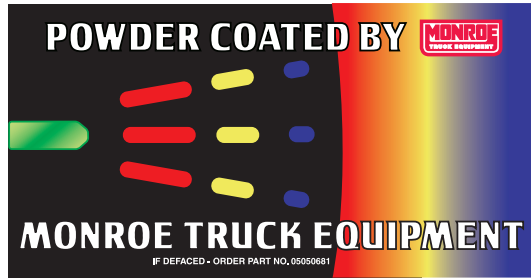
Moving conveyor/auger!

- Disconnect and lockout power before servicing, adjusting or cleaning.
- Keep hands, feet, hair and loose clothing away from moving parts at all times
- Never remove or modify guards or shields

Failure to heed will result in ~~injury~~ injury or death.

IF DEFACED - ORDER PART NO. 05051408

ITEM #8



ITEM #9



ITEM #10



ITEM #11

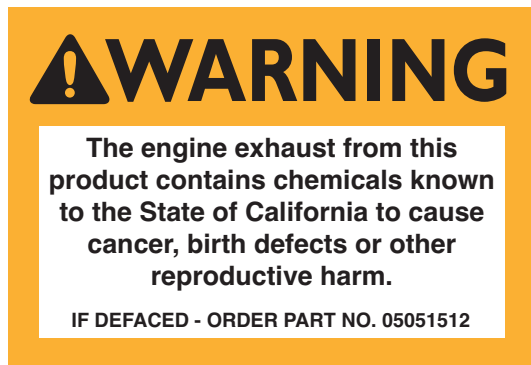


QUALITY CHECK

Inspected by:

05052311

ITEM #12



ITEM #13

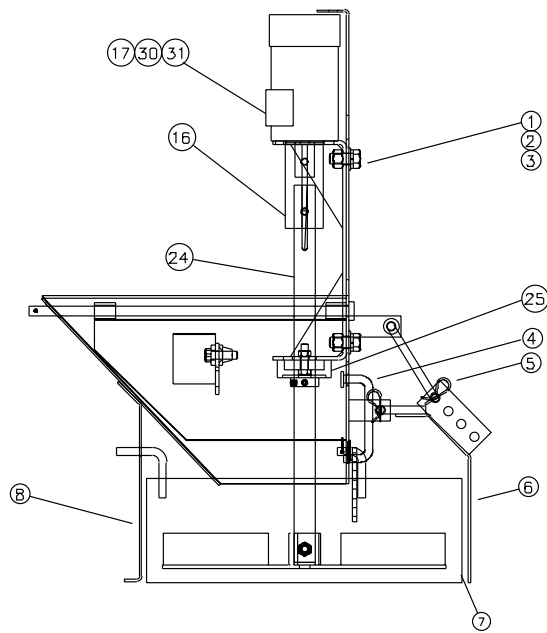
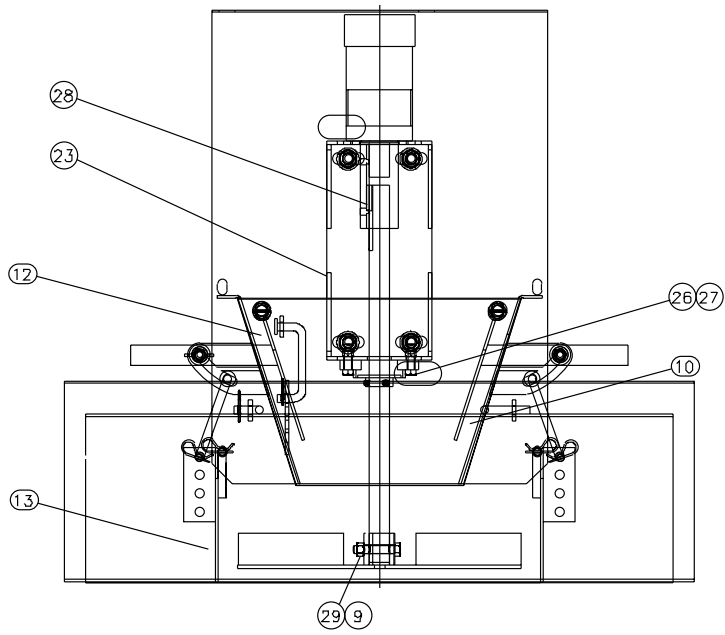
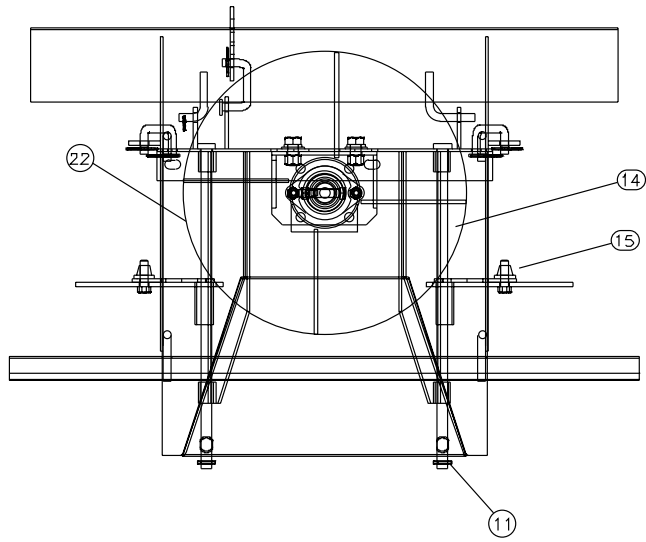
00056270 DECAL KIT			
Item	Qty	Part Number	Description
1	2	05051405	DECAL, MONROE SPREADER
2	1	05051404	DECAL, CAUTION #1-#6
3	1	05051518	DECAL, OIL DRAIN, MSPV, 1" X 1.5"
4	2	05052309	DECAL, DANGER: MOVING CONVEYOR
5	1	05051407	DECAL, WARNING: STAY CLEAR, WEAR
6	1	05051409	DECAL, CAUTION: USE CARE WHEN...
7	1	05051511	DECAL, DANGER: TURN POWER OFF
8	2	05051406	DECAL, DANGER: TURN POWER OFF
9	1	05050681	DECAL, BONDED POWDERCOAT <i>Not used on SST units</i>
10	3	05052310	DECAL, DANGER: KEEP GUARDS IN
11	1	05051625	DECAL, MONROE SNOW & ICE CONTROL
12	1	05052311	DECAL, QUALITY CHECK
13	1	05051512	DECAL, WARNING EMISSIONS...

00091758 CANISTER KIT, MANUAL STORAGE

Item	Qty	Part Number	Description
1	1	05052330	CANISTER, MANUAL STORAGE
2	1	05052331	BRACKET, SPRING CLIP MOUNTING
3	2	05017033	SCREW, #12-24 X .75 PH TR HD, SST
4	2	05021078	NUT, #12-24, LOCK, NYLON INSERT

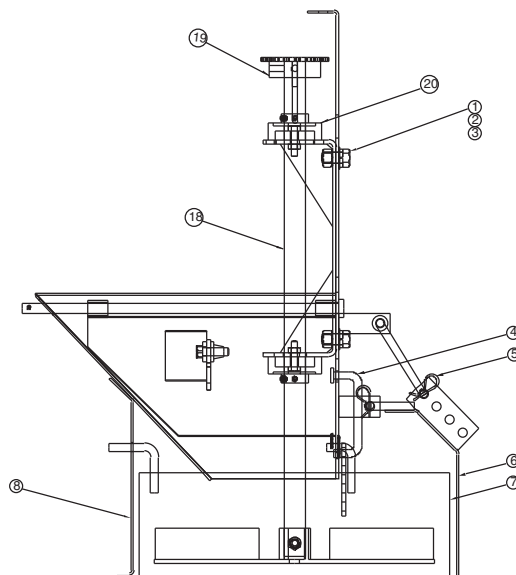
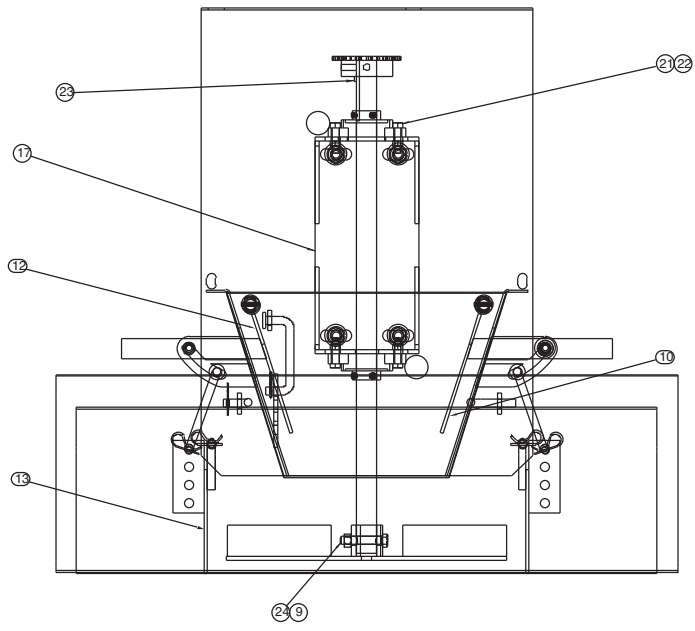
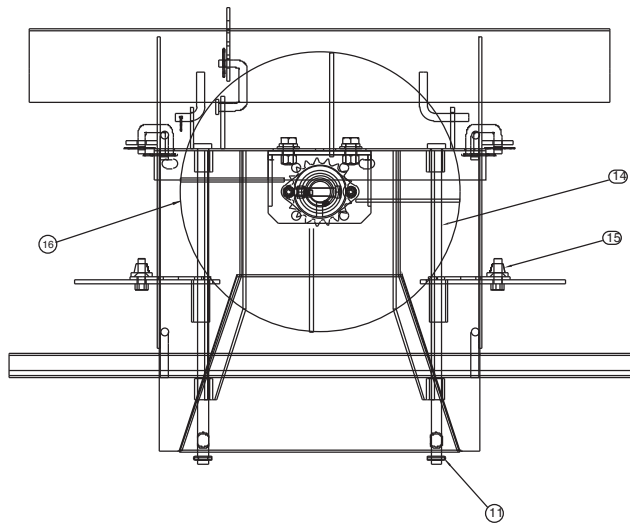
SPINNER ASSEMBLIES

Item	Qty	Part Number	Description	
1	1	00042731-A 00042731-B	SPINNER ASSEMBLY, HYDRAULIC, BOLT-ON, MS SPINNER ASSEMBLY, HYDRAULIC, BOLT-ON, SST	<i>See Page 42-43</i>
2	1	00057260-A 00057260-B	SPINNER ASSEMBLY, CHAIN, BOLT-ON, MS SPINNER ASSEMBLY, CHAIN, BOLT-ON, SST	<i>See Page 44-45</i>
3	1	00042732-A 00042732-B	SPINNER ASSEMBLY, EXTENDED, HYD, MS SPINNER ASSEMBLY, EXTENDED, HYD, SST	<i>See Page 46-47</i>
4	1	00057535-A 00057535-B	EXTENDED SPINNER ASSEMBLY, CHAIN, BOLT-ON, MS EXTENDED SPINNER ASSEMBLY, CHAIN, BOLT-ON, SST	<i>See Page 48-49</i>



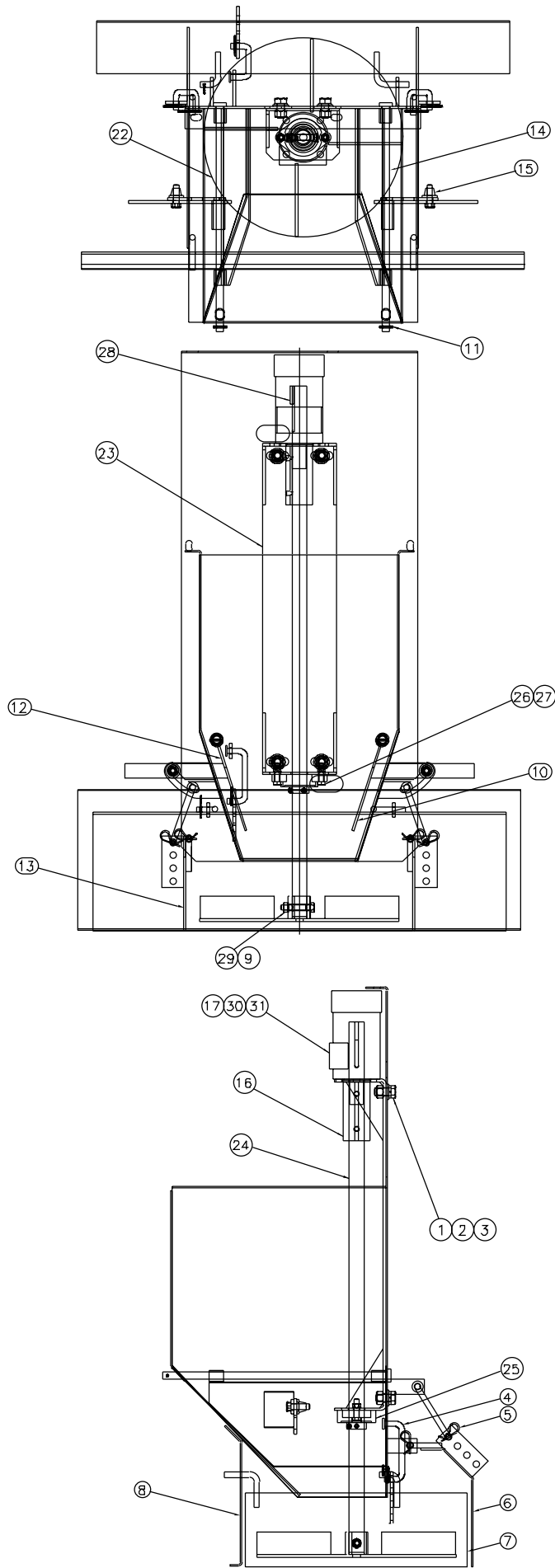
00042731 SPINNER ASSEMBLY, HYD-DRIVE

Item	Qty	Part Number	Description
1	4	05010689 05016047	BOLT, .5-13 X 1, G8, HHCS, ZINC BOLT, .5-13 X 1, HHCS, SST
2	4	05021309 05021391	WASHER, .5, FLAT, ZINC WASHER, .5, FLAT, SST
3	4	05021367 05021396	WASHER, .5, LOCK, ZINC WASHER, .5, LOCK, SST
4	3	05051225	ARM, ADJ LINK FOR NEW STYLE
5	6	05022045	PIN, .0725 X 1.562 X .375 HAIR
6	1	00057308-A 00057308-B	DEFLECTOR, REAR, MSPV, WELDMENT, MS DEFLECTOR, REAR, MSPV, WELDMENT, SST
7	1	00057360-A 000573690-B	DEFLECTOR, SIDE LH, WELDMENT, MSPV, MS DEFLECTOR, SIDE LH, WELDMENT, MSPV, SST
8	1	00057582-A 00057582-B	SPINNER FRAME WELDMENT, MSPV, MS SPINNER FRAME WELDMENT, MSPV, SST
9	1	05020898 05020891	NUT, .375-16, TOP LOCK, C&W, GR C NUT, .375-16, NYLON LOCK, SST
10	1	00057348-A 00057348-B	DIVERTER, LH FLOW, WELDMENT, MSPV, MS DIVERTER, LH FLOW, WELDMENT, MSPV, SST
11	2	05022021	PIN, .156 X 1.00, COTTER
12	1	00057347-A 00057347-B	DIVERTER, RH FLOW, WELDMENT, MSPV, MS DIVERTER, RH FLOW, WELDMENT, MSPV, SST
13	1	00057359-A 00057359-B	DEFLECTOR, RH SIDE, WELDMENT, MSPV, MS DEFLECTOR, RH SIDE, WELDMENT, MSPV, SST
14	2	00143741-A/B	PIN, PIVOT, .5 DIA X 15.5, PLATED
15	2	05050574	KNOB, PLASTIC STAR GRIP, .375-16
16	1	05051201	COUPLER, SHAFT, 1" X 4"
17	1	05006673	MOTOR, HYD, WHITE, 3.2 CID, 1" SHAFT <i>See Page 58-59</i>
18	1	05051402	DECAL- DANGER: TURNING SPINNERS.
22	1	00057257-A 00057257-B 05050064	SPINNER DISK WELDMENT, MSPV, MS SPINNER DISK WELDMENT, MSPV, SST SPINNER DISC, 13.5 UHMW, CCW, BOLT-ON
23	1	00057275-A 00057275-B	BRACKET, BEARING HOLD WELDMENT, MS BRACKET, BEARING HOLD WELDMENT, SST
24	1	00070495	SPINNER SHAFT MODIFICATION
25	1	05030023	BEARING, 1" BORE, 2 BOLT MOUNT
26	2	05010619 05016139	BOLT, .313-18 X 1.25, G8, HHCS, ZINC BOLT, .313-18 X 1.25, HHCS, SST
27	2	05020265 05020855	NUT, .313-18, G8, HEX, ZINC NUT, .313-18, HEX, SST
28	1	05050121	KEY, .25 X .25 X 1.5
29	1	05010647 05016166	BOLT, .375-16 X 2, G8, HHCS, ZINC BOLT, .375-16 X 2, HHCS, SST
30	4	05010642 05016050	BOLT, .375-16 X .875, G8, HHCS, ZINC BOLT, .375-16 X .875, HHCS, SST
31	4	05021365 05021392	WASHER, .375, LOCK, ZINC WASHER, .375, LOCK, SST
32	1	00012698	ATTACHMENT KIT, SPINNER MSPV, HYD KIT <i>See Page 52</i>
33	1	05052310	DECAL - DANGER: KEEP GUARDS IN



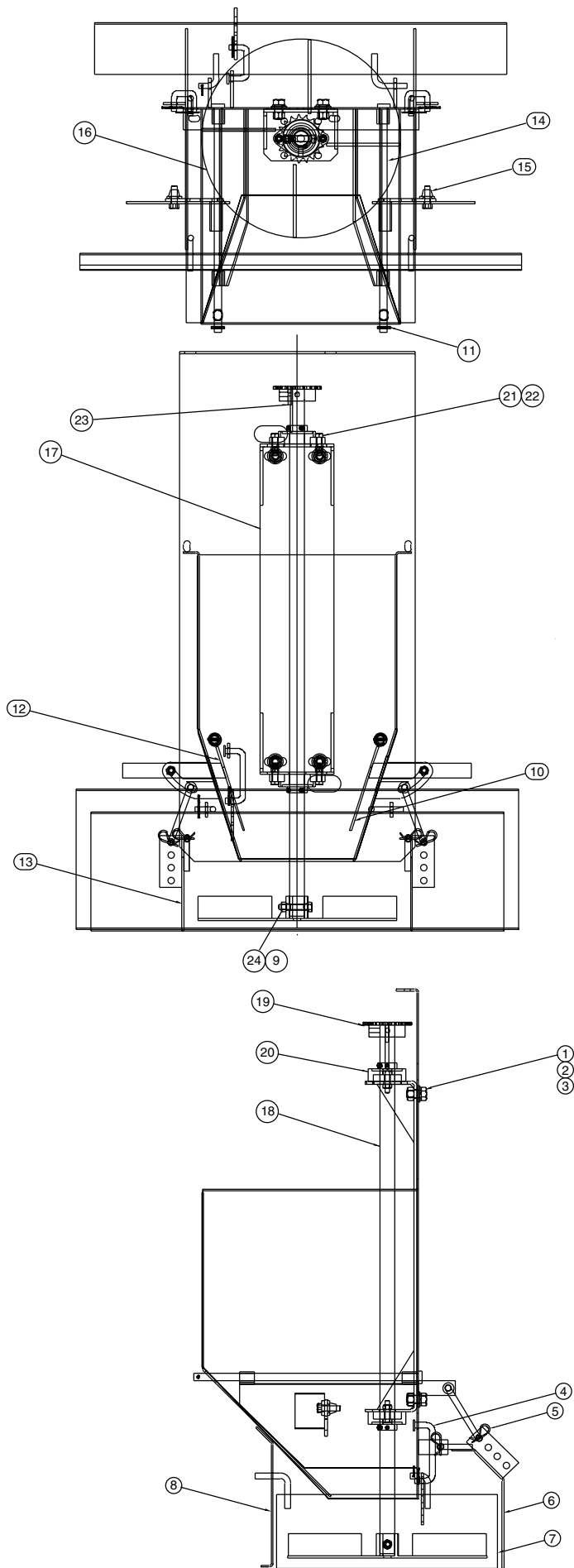
00057260 SPINNER ASSEMBLY, CHAIN, BOLT-ON

Item	Qty	Part Number	Description
1	4	05010689 05016047	BOLT, .5-13 X 1, G8, HHCS, ZINC BOLT, .5-13 X 1, HHCS, SST
2	4	05021309 05021391	WASHER, .5, FLAT, ZINC WASHER, .5, FLAT, SST
3	4	05021367 05021396	WASHER, .5, LOCK, ZINC WASHER, .5, LOCK, SST
4	3	05051225	ARM, ADJ LINK FOR NEW STYLE
5	6	05022045	PIN, .0725 X 1.562 X .375, HAIR
6	1	00057308-A 00057308-B 00057308-D	DEFLECTOR, REAR WELDMENT, MS DEFLECTOR, REAR WELDMENT, SST DEFLECTOR, REAR WELDMENT, AUSST
7	1	00057360-A 00057360-B 00057360-D	DEFLECTOR, SIDE LH, WELDMENT, MS DEFLECTOR, SIDE LH, WELDMENT, SST DEFLECTOR, SIDE LH, WELDMENT, AUSST
8	1	00057582-A 00057582-B 00057582-D	SPINNER FRAME WELDMENT, MS SPINNER FRAME WELDMENT, SST SPINNER FRAME WELDMENT, AUSST
9	1	05020898 05020891	NUT, .375-16, TOP LOCK, C&W, GR C NUT, .375-16, NYLON LOCK, SST
10	1	00057348-A 00057348-B 00057348-D	DIVERTER, LH FLOW, WELDMENT, MS DIVERTER, LH FLOW, WELDMENT, SST DIVERTER, LH FLOW, WELDMENT, AUSST
11	2	05022021	PIN, .156 X 1, ROLL, COTTER
12	1	00057347-A 00057347-B 00057347-D	DIVERTER, RH FLOW, WELDMENT, MS DIVERTER, RH FLOW, WELDMENT, SST DIVERTER, RH FLOW, WELDMENT, AUSST
13	1	00057359-A 00057359-B 00057359-D	DEFLECTOR, RH SIDE, WELDMENT, MS DEFLECTOR, RH SIDE, WELDMENT, SST DEFLECTOR, RH SIDE, WELDMENT, AUSST
14	2	00143741-A/B	PIN, PIVOT, .5 DIA X 15.50, PLATED
15	2	05050574	KNOB, PLASTIC STAR GRIP
16	1	00057257-A 00057257-B 00057257-D 05050064	SPINNER DISK WELDMENT, MS SPINNER DISK WELDMENT, SST SPINNER DISK WELDMENT, AUSST SPINNER DISC, 13.5 UHMW, CCW, BOLT-ON
17	1	00057275-A 00057275-B 00057275-D	BRACKET, BEARING HOLDER WELDMENT, MS BRACKET, BEARING HOLDER WELDMENT, SST BRACKET, BEARING HOLDER WELDMENT, AUSST
18	1	00057269	SPINNER SHAFT
19	1	05033007	SPROCKET, 41B19FX1, .25" KEYWAY
20	2	05030023	BEARING, 1" BORE, 2 BOLT MOUNT
21	4	05010619 05016139	BOLT, .313-18 X 1.25, G8, HHCS, ZINC BOLT, .313-18 X 1.25, HHCS, SST
22	4	05020265 05020855	NUT, .313-18, G2, HEX, ZINC NUT, .313-18, HEX, SST
23	1	05050121	KEY, .25 X .25 X 1.5"
24	1	05010647 05016166	BOLT, .375-16 X 2, G8, HHCS, ZINC BOLT, .375-16 X 2, HHCS, SST
25	4	05021364 05021407	WASHER, .313, LOCK, ZINC WASHER, .313, LOCK, SST
26	1	05051402	DECAL - DANGER: TURNING SPINNERS
27	1	05052310	DECAL - DANGER: KEEP GUARDS IN



00042732 SPINNER ASSEMBLY, EXTENDED, HYD DRIVE

Item	Qty	Part Number	Description
1	4	05010689 05016047	BOLT, .5-13 X 1, G8, HHCS, ZINC BOLT, .5-13 X 1, HHCS, SST
2	4	05021309 05021391	WASHER, .5, FLAT, ZINC WASHER, .5, FLAT, SST
3	4	05021367 05021396	WASHER, .5, LOCK, ZINC WASHER, .5, LOCK, SST
4	3	05051225	ARM, ADJ LINK FOR NEW STYLE
5	6	05022045	PIN, .0725 X 1.562 X .375 HAIR
6	1	00057308-A 00057308-B	DEFLECTOR, REAR, MSPV, WELDMENT, MS DEFLECTOR, REAR, MSPV, WELDMENT, SST
7	1	00057360-A 000573690-B	DEFLECTOR, SIDE LH, WELDMENT, MSPV, MS DEFLECTOR, SIDE LH, WELDMENT, MSPV, SST
8	1	00057585-A 00057585-B	SPINNER FRAME WELDMENT, MSPV, EXT, MS SPINNER FRAME WELDMENT, MSPV, EXT, SST
9	1	05020898 05020891	NUT, .375-16, TOP LOCK, C&W, GR C NUT, .375-16, NYLON LOCK, SST
10	1	00057348-A 00057348-B	DIVERTER, LH FLOW, WELDMENT, MSPV, MS DIVERTER, LH FLOW, WELDMENT, MSPV, SST
11	2	05022021	PIN, .156 X 1, COTTER
12	1	00057347-A 00057347-B	DIVERTER, RH FLOW, WELDMENT, MSPV, MS DIVERTER, RH FLOW, WELDMENT, MSPV, SST
13	1	00057359-A 00057359-B	DEFLECTOR, RH SIDE, WELDMENT, MSPV, MS DEFLECTOR, RH SIDE, WELDMENT, MSPV, SST
14	2	00143741-A/B	PIN, PIVOT, .5 DIA X 15.5, PLATED
15	2	05050574	KNOB, PLASTIC STAR GRIP, .375-16
16	1	05051201	COUPLER, SHAFT, 1" X 4"
17	1	05006673	MOTOR, HYD, WHITE, 3.2 CID, 1" SHAFT <i>See Page 58-59</i>
18	1	05051402	DECAL- DANGER: TURNING SPINNERS.
22	1	00057257-A 00057257-B 05050064	SPINNER DISK WELDMENT, MSPV, MS SPINNER DISK WELDMENT, MSPV, SST SPINNER DISC, 13.5 UHMW, CCW, BOLT-ON
23	1	00057284-A 00057284-B	SHAFT MOUNT WELDMENT, SPINNER, MS SHAFT MOUNT WELDMENT, SPINNER, SST
24	1	00059548	SPINNER SHAFT MODIFICATION, EXT
25	1	05030023	BEARING, 1" BORE, 2 BOLT MOUNT
26	2	05010619 05016139	BOLT, .313-18 X 1.25, G8, HHCS, ZINC BOLT, .313-18 X 1.25, HHCS, SST
27	2	05020265 05020855	NUT, .313-18, G8, HEX, ZINC NUT, .313-18, HEX, SST
28	1	05050121	KEY, .25 X .25 X 1.5
29	1	05010647 05016166	BOLT, .375-16 X 2, G8, HHCS, ZINC BOLT, .375-16 X 2, HHCS, SST
30	4	05010642 05016050	BOLT, .375-16 X .875, G8, HHCS, ZINC BOLT, .375-16 X .875, HHCS, SST
31	4	05021365 05021392	WASHER, .375, LOCK, ZINC WASHER, .375, LOCK, SST
32	1	00012698	ATTACHMENT KIT, SPINNER MSPV, HYD KIT <i>See Page 52</i>
33	1	05052310	DECAL - DANGER: KEEP GUARDS IN



00057535 SPINNER ASSEMBLY, EXTENDED

Item	Qty	Part Number	Description
1	4	05010689 05016047	BOLT, .5-13 X 1, G8, HHCS, ZINC BOLT, .5-13 X 1, HHCS, SST
2	4	05021309 05021391	WASHER, .5, FLAT, ZINC WASHER, .5, FLAT, SST
3	4	05021367 05021396	WASHER, .5, LOCK, ZINC WASHER, .5, LOCK, SST
4	3	05051225	ARM, ADJ LINK FOR NEW STYLE
5	6	05022045	PIN, .0725 X 1.562 X .375, HAIR
6	1	00057308-A 00057308-B 00057308-D	DEFLECTOR, REAR, WELDMENT, MS DEFLECTOR, REAR WELDMENT, SST DEFLECTOR, REAR WELDMENT, AUSST
7	1	00057360-A 00057360-B 00057360-D	DEFLECTOR, SIDE LH, WELDMENT, MS DEFLECTOR, SIDE LH, WELDMENT, SST DEFLECTOR, SIDE LH, WELDMENT, AUSST
8	1	00057585-A 00057585-B 00057585-D	SPINNER FRAME WELDMENT, EXT, MS SPINNER FRAME WELDMENT, EXT, SST SPINNER FRAME WELDMENT, EXT, AUSST
9	1	05020898 05020891	NUT, .375-16, TOP LOCK, C&W NUT, .375-16, NYLONCK, SST
10	1	00057348-A 00057348-B 00057348-D	DIVERTER, LH FLOW, WELDMENT, MS DIVERTER, LH FLOW, WELDMENT, SST DIVERTER, LH FLOW, WELDMENT, AUSST
11	2	05022021	PIN, .156 X .875, ROLL, ZINC
12	1	00057347-A 00057347-B 00057347-D	DIVERTER, RH FLOW, WELDMENT, MS DIVERTER, RH FLOW, WELDMENT, SST DIVERTER, RH FLOW, WELDMENT, AUSST
13	1	00057359-A 00057359-B 00057359-D	DEFLECTOR, RH SIDE, WELDMENT, MS DEFLECTOR, RH SIDE, WELDMENT, SST DEFLECTOR, RH SIDE, WELDMENT, AUSST
14	2	00143741-A/B	PIN PIVOT, .5 DIA X 15.5, PLATED
15	2	05050574	KNOB, PLASTIC STAR GRIP
16	1	00057257-A 00057257-B 00057257-D 5050064	SPINNER DISK WELDMENT, MS SPINNER DISK WELDMENT, SST SPINNER DISK WELDMENT, AUSST SPINNER DISC, 13.5, UHMW, CCW, BOLT-ON
17	1	00057284-A 00057284-B 00057284-D	SHAFT MOUNT WELDMENT, SPINNER, MS SHAFT MOUNT WELDMENT, SPINNER, SST SHAFT MOUNT WELDMENT, SPINNER, AUSST
18	1	00057272	SPINNER SHAFT, EXT
19	1	05033007	SPROCKET, 19 TOOTH
20	2	05030023	BEARING, 1" BORE, 2 BOLT MOUNT
21	4	05010619 05016139	BOLT, .313-18 X 1.25, G8, HHCS, ZINC BOLT, .313-18 X 1.25, HHCS, SST
22	4	05020265 05020855	NUT, .313-18, G8, HEX, ZINC NUT, .313-18, HEX, SST
23	1	05050121	KEY, .25 X .25 X 1.5
24	1	05010647 05016166	BOLT, .375-16 X 2, G8, HHCS, ZINC BOLT, .375-16 X 2, HHCS, SST
25	4	05021364 05021407	WASHER, .313, LOCK, ZINC WASHER, .313, LOCK, SST
26	1	05051402	DECAL-DANGER: TURNING SPINNERS
27	1	05052310	DECAL-DANGER: KEEP GUARDS IN

INVERTED V KITS

Item	Qty	Part Number	Description
1	1	00057251-A 00057251-B	INVERTED V WELDMENT, 6-8, MS INVERTED V WELDMENT, 6-8, SST
2	4	05010641 05016050	BOLT, .375-16 X .875, G8, HHCS, ZINC BOLT, .375-16 X .875, HHCS, SST
3	4	05020607 05020840	NUT, .375-16, G2, SPINLOCK, ZINC NUT, .375-16, SPINLOCK, SST

TOP GRATE WELDMENT, 8', .375"

Item	Qty	Part Number	Description
1	2	00034523	TOP GRATE WELDMENT, MSPV, 4.0'

00135265 ATTACHMENT KIT, SPINNER, STD, CHAIN DRIVE

Item	Qty	Part Number	Description
1	1	05036577	CHAIN, ROLLER, #41 PITCH, 66 LINKS
2	2	05051069	ROD, .375-16 X 8.5, 90° BEND
3	4	05020266	NUT, .375-16, G8, HEX, ZINC
4	4	05021365	WASHER, .375, LOCK, ZINC
5	8	05021307	WASHER, .375, FLAT, ZINC
6	2	05010643	BOLT, .375-16 X 1, G8, HHCS, ZINC
7	2	05020898	NUT, .375-16, TOP LOCK, C&W, GR C

00012698 ATTACHMENT KIT, SPINNER, MOTOR DRIVE

Item	Qty	Part Number	Description
1	2	05051069	ROD, .375-16 X 8.5, 90° BEND
2	4	05020266	NUT, .375-16, G8, HEX, ZINC
3	4	05021365	WASHER, .375, LOCK, ZINC
4	8	05021307	WASHER, .375, FLAT, ZINC
5	2	05010643	BOLT, .375-16 X 1, G8, HHCS, ZINC
6	2	05020898	NUT, .375-16, TOP LOCK, C&W, GR C

00057595 MOUNTING KIT, MSPV/MD, TURNBUCKLE

Item	Qty	Part Number	Description
1	4	05036106	CHAIN, .25" HIGH TEST, 12" OAL
2	1	05050272	CARDBOARD BOX, 8" X 6.5" X 2.5"
3	4	05051060	TURNBUCKLE, .375" X 6" HOOK & HOOK
4	4	B32F	D-RING, 3/8" W/ BOLT ON BRACKET
5	8	05020266	NUT, .375-16, G8, HEX, ZINC
6	16	05021307	WASHER, .375, FLAT, ZINC
7	4	05020898	NUT, .375-16, TOP LOCK, C&W, GR C
8	4	05021365	WASHER, .375, LOCK, ZINC
9	4	05010643	BOLT, .375-16 X 1, G8, HHCS, ZINC
10	8	05013988	BOLT, .375-16 X 1.50, G5, CARRIAGE, ZINC

00012396 MOUNTING KIT, CHAIN BINDERS WITH EYE BOLTS

Item	Qty	Part Number	Description
1	4	05036106	CHAIN, .250 HIGH TEST, 12" OAL
2	1	05050050	CLAMPER, CHROME PLATED SET OF 4
3	1	05050272	CARDBOARD BOX, 8 X 6.5 X 2.5
4	4	B32F	D RING, 3/8" W/ BOLT ON BRACKET
5	4	05010645	BOLT, .375-16 X 1.5, G8, HHCS, ZINC
6	20	05021307	WASHER, .375, FLAT, ZINC
7	4	05021365	WASHER, .375, LOCK, ZINC
8	8	05020266	NUT, .375-16, G8, HEX, ZINC
9	12	05020898	NUT, .375-16, GC, TOP LOCK, C&W
10	8	05013988	BOLT, .375-16 X 1.50, G5, CARRIAGE, ZINC

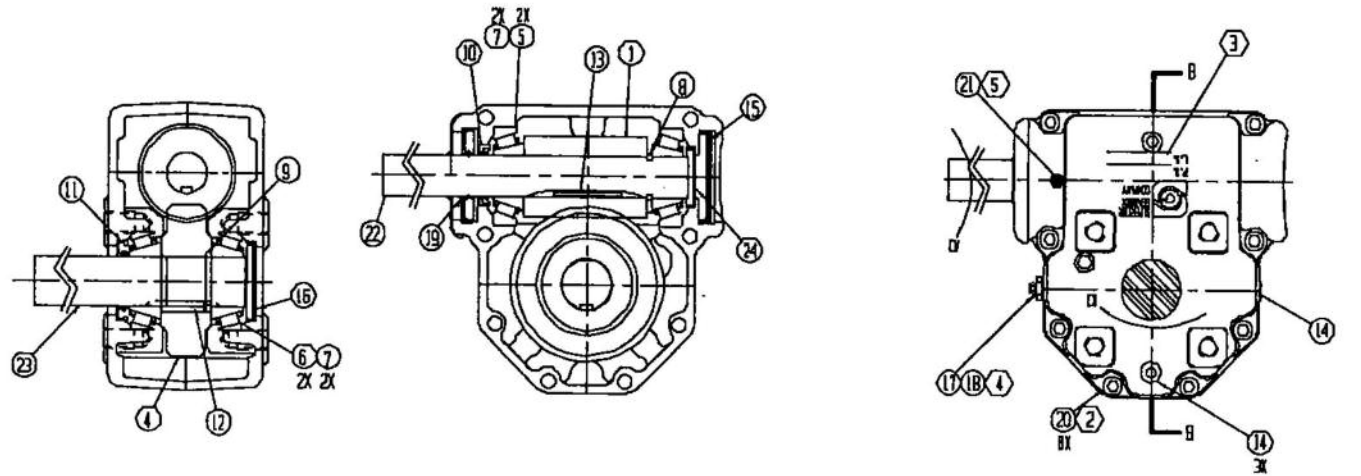
00135266 THROTTLE CONTROL, ELEC

Item	Qty	Part Number	Description
1	1	05041238	PANEL, STD ELECTRIC THROTTLE
2	1	05041240	HARNESS, MSPV, STD ELECTRIC THROTTLE
3	5	05052475	CLAMP, .375" CUSHIONED METAL, #6, .5 WIDE, SST
4	1	00135265	ATTACHMENT KIT, SPINNER

00100659 CONTROL, MSPV, WIRELESS REMOTE

Item	Qty	Part Number	Description
1	1	05052986	THROTTLE CONTROL, WIRELESS RF
2	1	00135265	ATTACHMENT KIT, SPINNER, MSPV
3	4	05016059	SCREW, #10-24 X .75 PH, TRS, HD
4	4	05020964	NUT, #10-24 NYLON LOCK, 316 SST

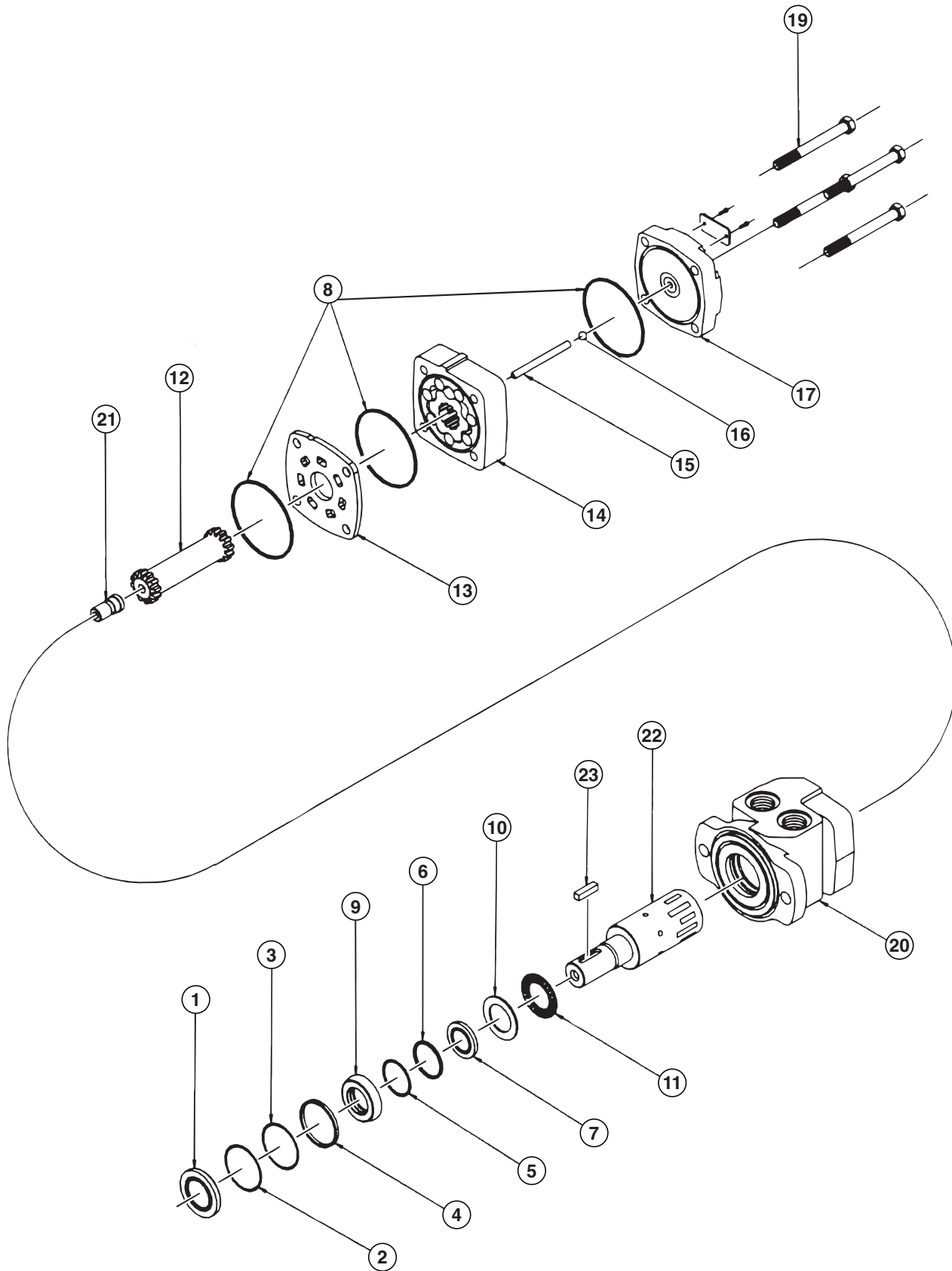
05007337 GEARBOX, 20:1, 1.25" SHAFT DIA, 18" LG, 4B



GEARBOX, 20:1, 1.25" SHAFT, DIA, 18"

Item	Qty	Part Number	Description
1	1	05007377	Gear, Worm, Cut
2	1	05007378	Housing, Machine, Tap Black
3	1	05007379	Housing, Machine
4	1	05007380	Gear, Worm
5	2	05007381	Bearing, Cone, 1
6	2	05007382	Bearing, Cone
7	4	05007383	Bearing, Cup
8	1	05007081	Retaining Ring, Ext 1 Shaft
9	1	05007082	Retaining Ring, Ext 1.25 Shaft
10	1	05051110	Seal, 1-1.499-.25
11	1	05051140	Seal, 1.25-2-.312
12	1	05007384	Key, .25 x .25, 1.080
13	1	05007385	Key, .25 x .25, 1.580
14	5	05007386	Plug, .25-18 NPT
15	1	05007387	End Cap, 2.312-.313
16	1	05051136	End Cap, 2-.312
17	1	05007388	Bushing, .25 x .125
18	1	05007366	Plug, Vent
19	1	05051471	Seal, 1-2.312-.312
20	8	05007389	Bolt, .313-18 x 1.25
21	1	05007390	Aerk, Grease Spin Drive
22	1	05007391	Shaft, Input
23	1	05007392	Shaft, Output
24	1	05007393	End Cap
25	2	05007394	Key, .25 x .875
26	2	05007395	Key, .25 x .25 x 2.25
27	1	05007376	Guard, Shaft, Worm
28	14	05007372	Lube

05006673 MOTOR, HYD, WHITE, 3.2CI, 4B, 1" EXT SHAFT, .875" ORB/SEAL SAVER



MOTOR ASSEMBLY PARTS LIST

Item	Part Number	Description
1	Seal Kit 05006679	Dust Seal
2		Split Wire Ring
3		Metal Backup Shim
4		High Pressure Seal
5		Metal Backup Shim
6		Teflon Backup Shim
7		Shaft Seal
8		Body Seals (3)
9		Seal Carrier
10		Thrust Washer
11	---	Thrust Bearing
12	---	Drive Link Kit
13	---	Wear Plate
14	---	Rotor Kit
15	---	Drive Link Pin Kit
16	---	Included in item #15 Drive Link Pin Kit
17	---	End Cover
18	---	Serial Number Plate
19	---	Bolt Set Kit
20	05006564	Housing Kit, 4-Hole, w/ 7/8" O-Ring
21	---	Cooling Plug
22	05006410	Shaft Kit 1" Straight Speed Sensor
23	---	Key Kit, 1" Straight

HOW TO ORDER PARTS

To order or inquire about replacement parts, please contact the distributor or store that the product was purchased through. To speed the information flow, please have the follow information ready:

- Model Number
- Serial Number
- Part Number and/or description as per the parts manual
- Quantity needed

For further information about **Monroe Truck Equipment** replacement parts, please call 800-880-0109 and ask for **Snow & Ice Parts Sales**.

RETURN POLICY

Merchandise returned to **Monroe Truck Equipment** must have a Warranty Service Request (WSR) form filled out completely and signed by authorized personnel. To get your WSR form, call 800-880-0109. For whole goods, ask for **Snow & Ice Sales**. For replacement parts, ask for **Snow & Ice Parts Sales**. All returned items are subject to a 15% restocking fee and must be sent freight prepaid!

MONROE TRUCK EQUIPMENT, INC. WARRANTY SNOW & ICE CONTROL PRODUCTS

Monroe Truck Equipment, Inc. warrants to the original purchaser, that if any part of the product proves to be defective in workmanship or material within **ONE YEAR** of the original installation, and is returned to us within 30 days of the discovered defect, we will (at our option) repair or replace the defective part. This warranty does not apply to damage resulting from misuse, neglect, accident, improper installation, normal wear items or lack of maintenance. This warranty is exclusive and supersedes all other warranties, whether expressed or implied. **Monroe Truck Equipment, Inc.** neither assumes, nor authorizes anyone to assume for it, any other obligation or liability in connection with this warranty and will not be liable for consequential damages.

All engines, pumps, motors, cylinders and valves are warranted by their manufacturer and not by **Monroe Truck Equipment, Inc.**. The manufacturer's warranty will apply to these parts. Electrical and hydraulic components are not to be disassembled without the express written permission of Monroe Truck Equipment. Use of replacement parts other than original equipment voids this warranty.

All defective parts returned must be accompanied by the model number, serial number, date installed, date of defect, description of defect, and the name of the distributor from whom it was purchased. All warranty claims must have prior written approval from **Monroe Truck Equipment, Inc.**

Please return the warranty registration card that accompanies this manual to confirm receipt of this parts catalog and acknowledge the information contained within. Failure to return the attached card may result in a voided warranty.



1051 West 7th Street
Monroe, WI 53566
608-328-8127 ~ Fax: 608-328-4278

Warranty Policy

Uninstalled Parts and Equipment Provided by Monroe Truck Equipment

Monroe Truck Equipment will provide the following limited warranty for a period of one year to the original purchaser of all uninstalled goods provided by Monroe Truck Equipment:

LIMITED WARRANTY: All goods provided by Monroe Truck Equipment (MTE) will be free from defects in material and workmanship for a period of one year from the date of purchase by the original purchaser. This limited warranty shall be the sole and exclusive remedy for any such product found to be defective. This limited warranty supercedes all previous warranties and is exclusive and in lieu of all other warranties, whether expressed or implied.

This limited warranty applies only to parts or accessories manufactured by MTE and/or provided by same. Except with respect to title, this limited warranty does not pertain to parts or accessories not manufactured and/or provided by MTE, regardless of whether such parts or accessories were selected and/or recommended by MTE. MTE will, as a service to the buyer, pass on any warranties received from the original manufacturer of MTE provided parts and/or accessories.

MTE will not under any circumstances be liable for any incidental or consequential damages whether in tort, contract, or otherwise, for any bodily injury, death, property damage, loss of use, or loss of income resulting from or in any way arising out of any goods provided by MTE, or their sale, use, or manufacture.

Any warranty claim deemed to be arising from the result of misuse, abuse, neglect, accident, improper installation, lack of maintenance, act of war (whether declared or otherwise), or act of God will be denied. Any repair or modification by the buyer or any third party, without the prior written consent of MTE, will void any possible warranty compensation. Any damage deemed to be the result of abnormal operation will not be compensated by this warranty.

Normal or special maintenance items such as fuels, fluids, tires, belts, hoses, filters, air cleaners, light bulbs, and any other items subject to normal wear and tear that are supplied in connection with goods provided by MTE are not allowed under this warranty.

All engines, pumps, cylinders, valves, and motors are warranted by their manufacturer and not by Monroe Truck Equipment. The manufacturer's warranty will apply to these parts. Electrical and hydraulic components are not to be disassembled without the express written consent of MTE. Any disassembly of MTE provided components without prior authorization will void the applicable warranty.

Monroe Truck Equipment shall be the sole and final determining authority as it applies to the administration of this warranty policy. Purchaser acknowledges receipt of Monroe Truck Equipment Warranty Policy and agrees to be bound by same.



GLOBAL SOLUTIONS
ARMORED VEHICLES ~ SPORT TRUCK CONVERSIONS
MUNICIPAL SNOW & ICE CONTROL ~ FIRE APPARATUS
PICKUP TRUCK ACCESSORIES ~ TRUCK EQUIPMENT/MODIFICATIONS





1051 West 7th Street
Monroe, WI 53566
608-328-8127 ~ Fax: 608-328-4278

Any and all warranty claims must be forwarded to MTE within 10 days of defect discovery. A copy of the original Monroe Truck Equipment invoice as well as the manufacturer's model number, serial number, and date of installation must accompany all correspondence regarding said claims. MTE will, at their option, choose whether to repair or replace the defective part unless otherwise specified by the original manufacturer of said part.

Procedures for Warranty Claims Notification

For submission of any warranty claim please contact Monroe Truck Equipment – Warranty Department at 800-356-8134

The following documentation will be needed when you call for initial warranty authorization:

1. A copy of the original MTE invoice.
2. Make, Model, and VIN or Serial Number of the equipment involved.
3. Part number and serial number of the part in question.
4. A complete description of the problem.

The following must accompany any claim submitted to Monroe Truck Equipment:

1. Documented photographs of any physical damage.
2. Inspection notes by MTE personnel or MTE authorized 3rd party.
3. Authorization number issued by Monroe Truck Equipment – Warranty Department.

Defective parts must be returned to Monroe Truck Equipment (freight prepaid) within 30 days of issuance of Authorization Number.

Monroe Truck Equipment reserves the right to void any warranty for failure to comply with Monroe Truck Equipment Warranty Policy.

This policy is effective October 11, 2012

